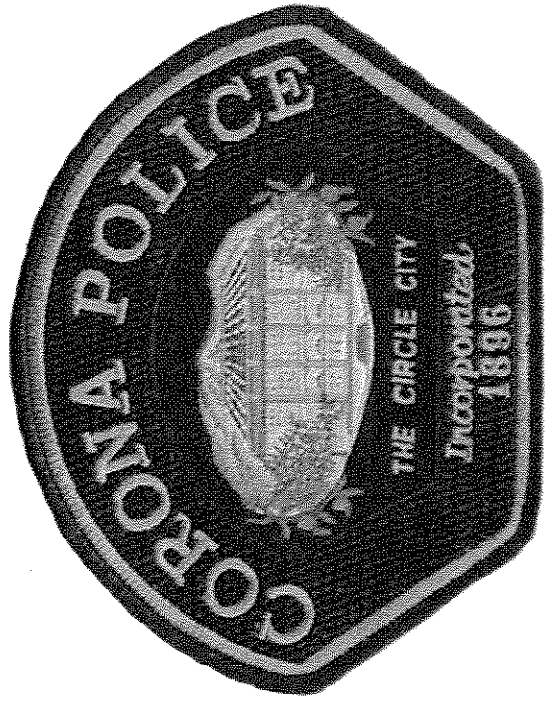


City of Corona Police Department Red Light Camera Program

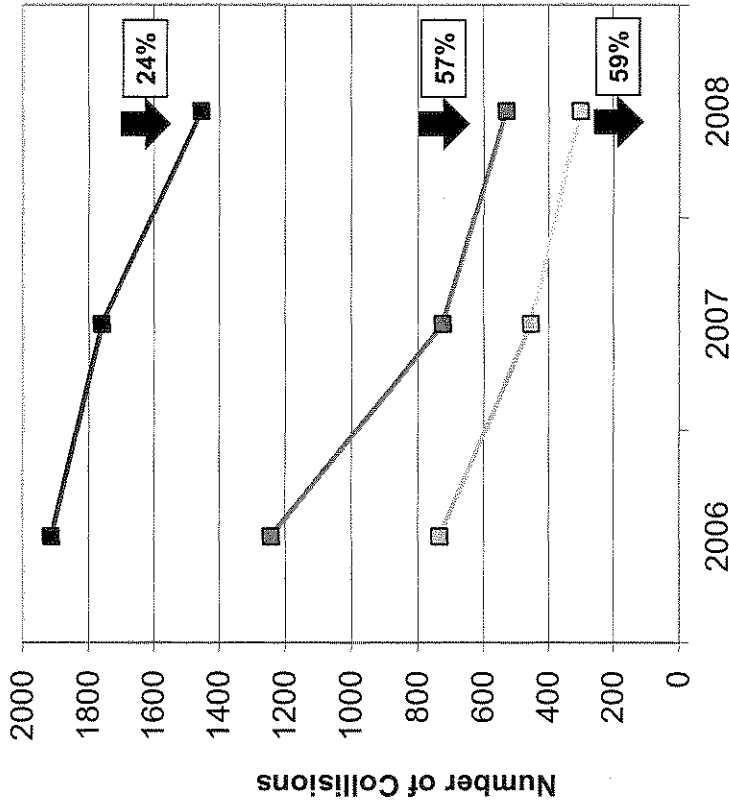


Red Light Camera

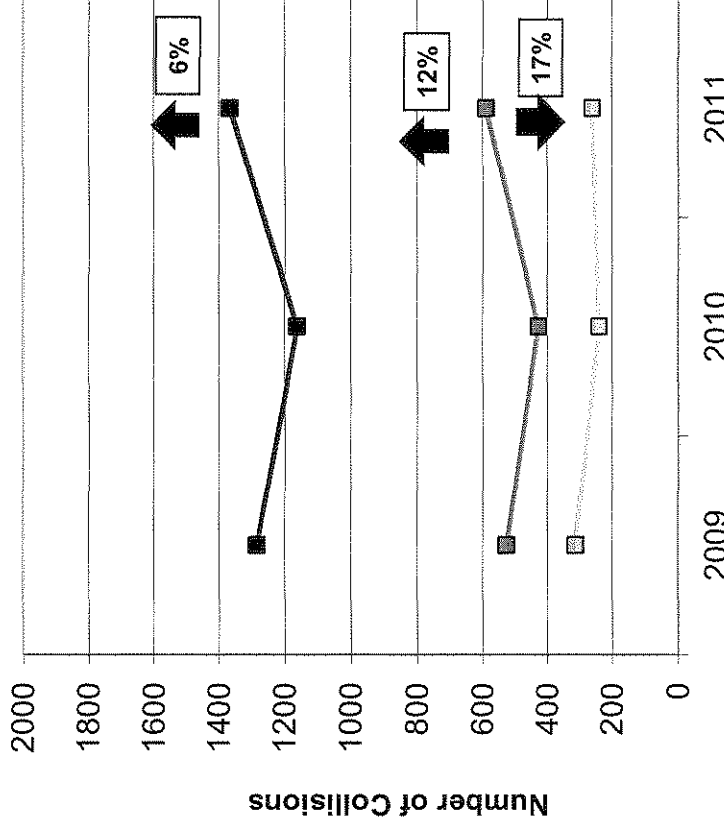
Presentation

- Present Statistical Data
- Advantages of Camera Enforcement Program
- Current Options/
Recommendations
- Possible Expansion Locations

Number of Collisions - Citywide 2006-2008



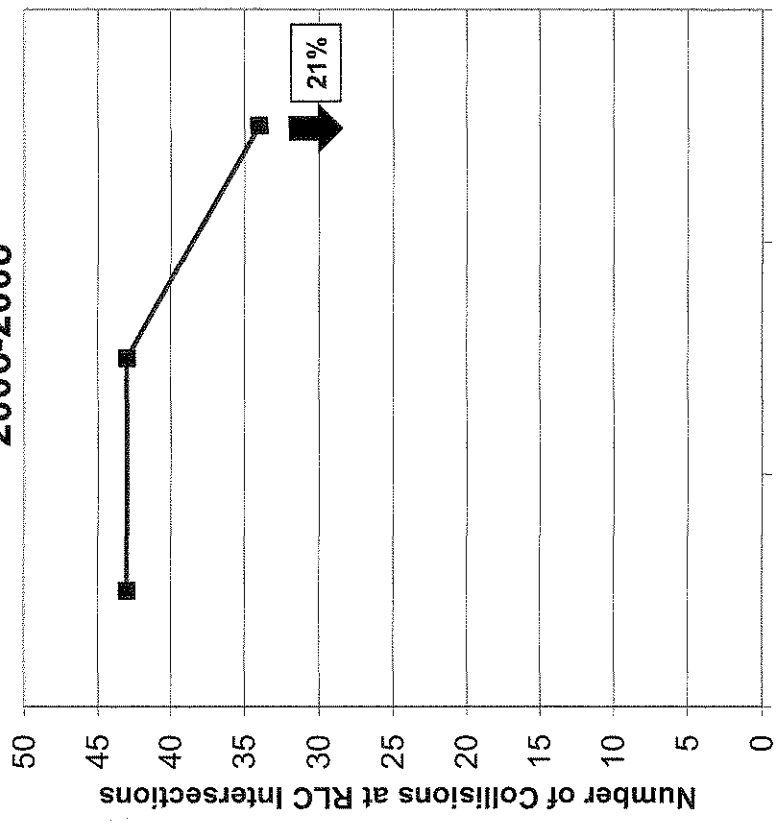
Number of Collisions - Citywide 2009-2011



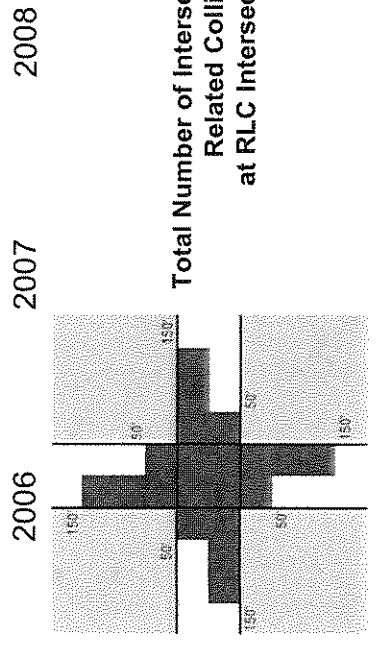
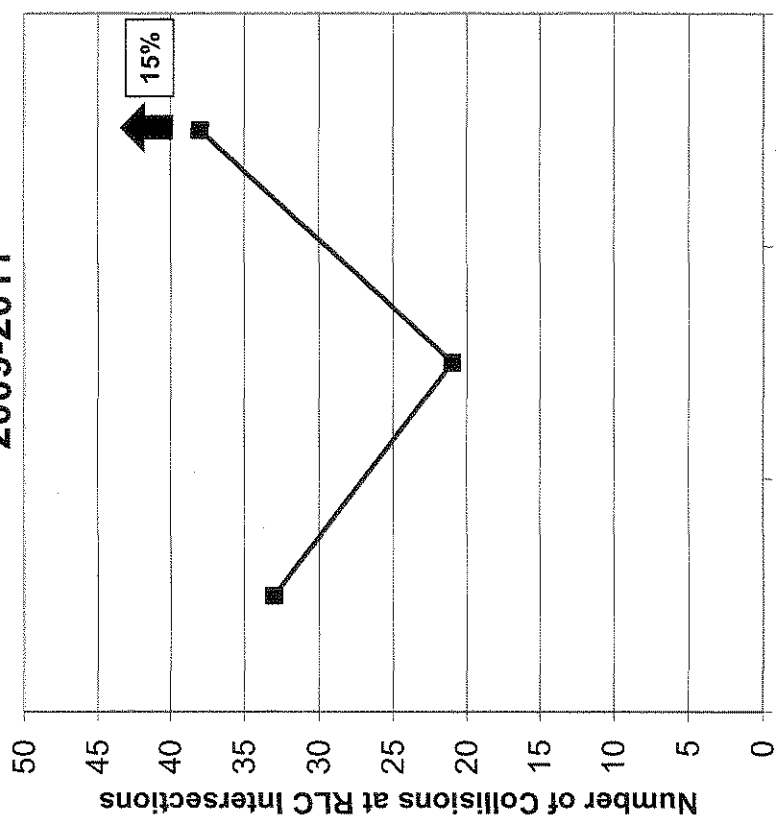
	2006	2007	2008	2009	2010	2011	2012*
Total Number of Collisions	1914	1760	1455	1284	1161	1365	642
Collisions At All Intersections	1243	725	530	3810 (26%) Reduction	526	427	245
Collisions At Only Signalized Intersections	735	455	302	1542 (38%) Reduction	314	240	101
		1492		815 (45%) Reduction			

* Data taken from January 1, 2012 to June 01, 2012

Number of Intersection Related Collisions at RLC Intersections 2006-2008



Number of Intersection Related Collisions at RLC Intersections 2009-2011

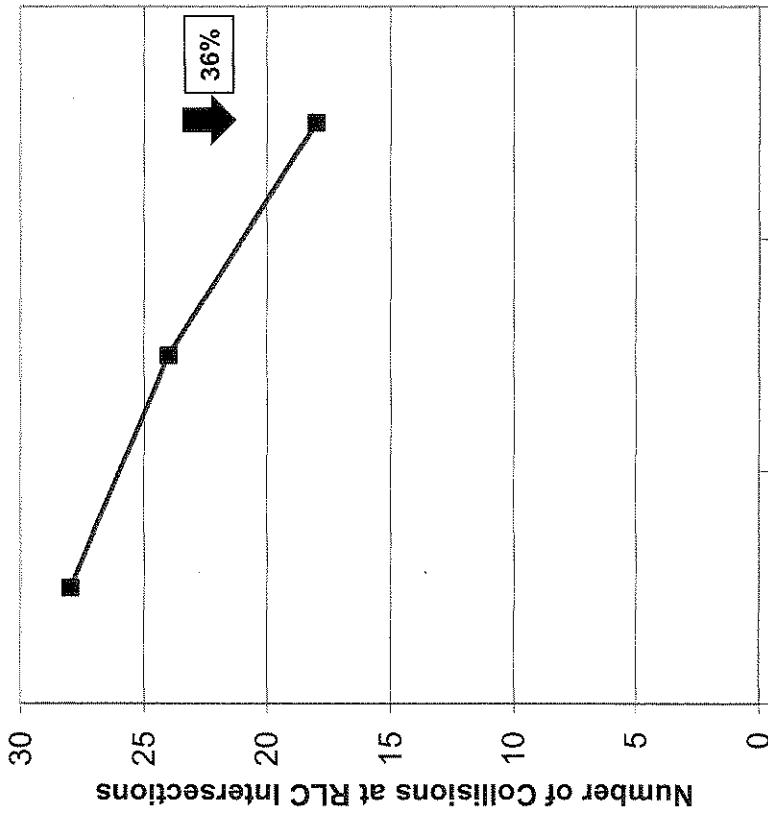


Total Number of Intersection Related Collisions at RLC Intersections

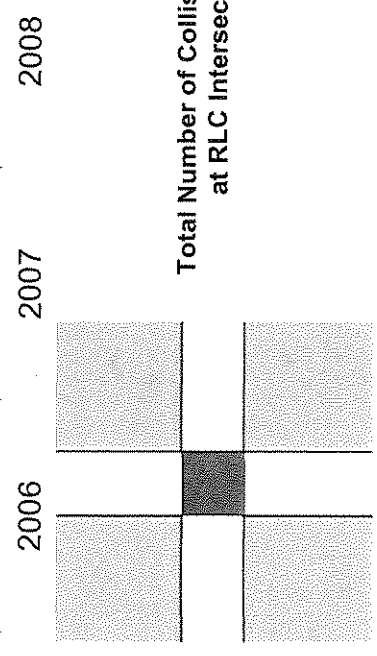
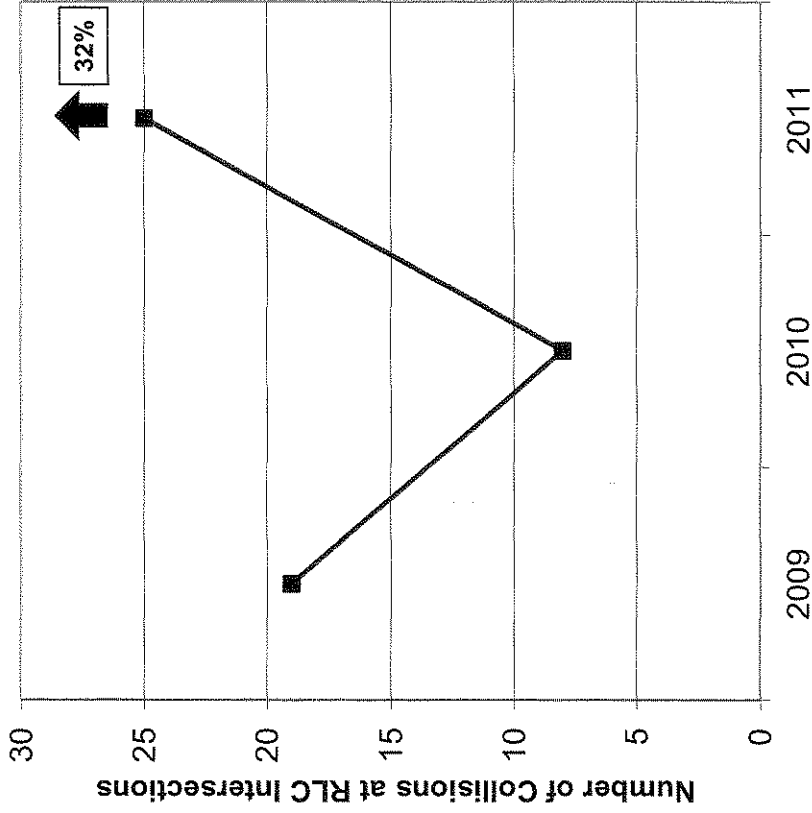
Year	2006	2007	2008	2009	2010	2011	2012*
Number of Collisions	43	43	34	33	21	38	17
Total	120			92 (23%) Reduction			

* Data taken from January 1, 2012 to June 01, 2012

Number of Collisions at RLC Intersections 2006-2008



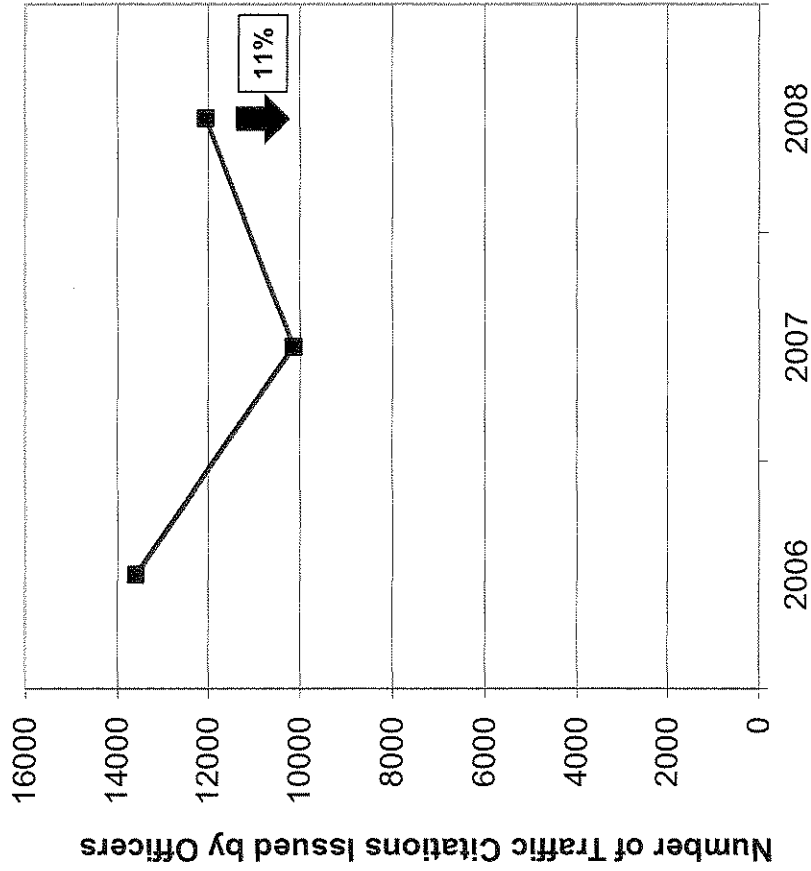
Number of Collisions at RLC Intersections 2009-2011



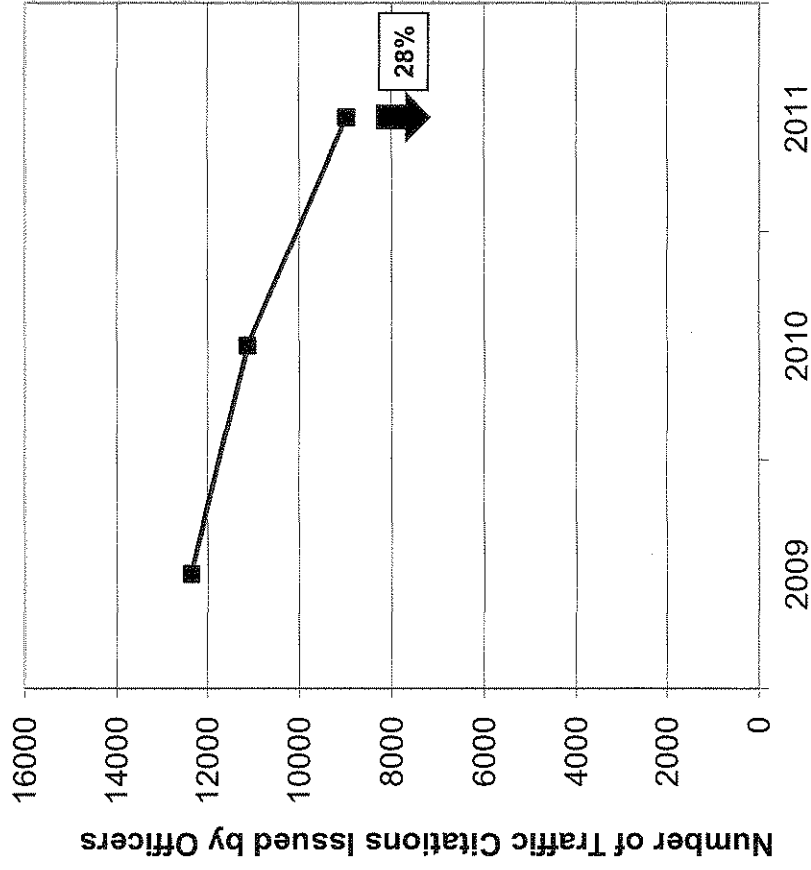
Year	2006	2007	2008	2009	2010	2011	2012*
Total Number of Collisions at RLC Intersections	28 (4)	24 (4)	18 (4)	19 (3)	8 (1)	25 (5)	4 (0)
	70 (12)			52 (26%) Reduction (9) (25%) Reduction			

* Data taken from January 1, 2012 to June 01, 2012

Number of Traffic Citations Issued by Officers 2006-2008



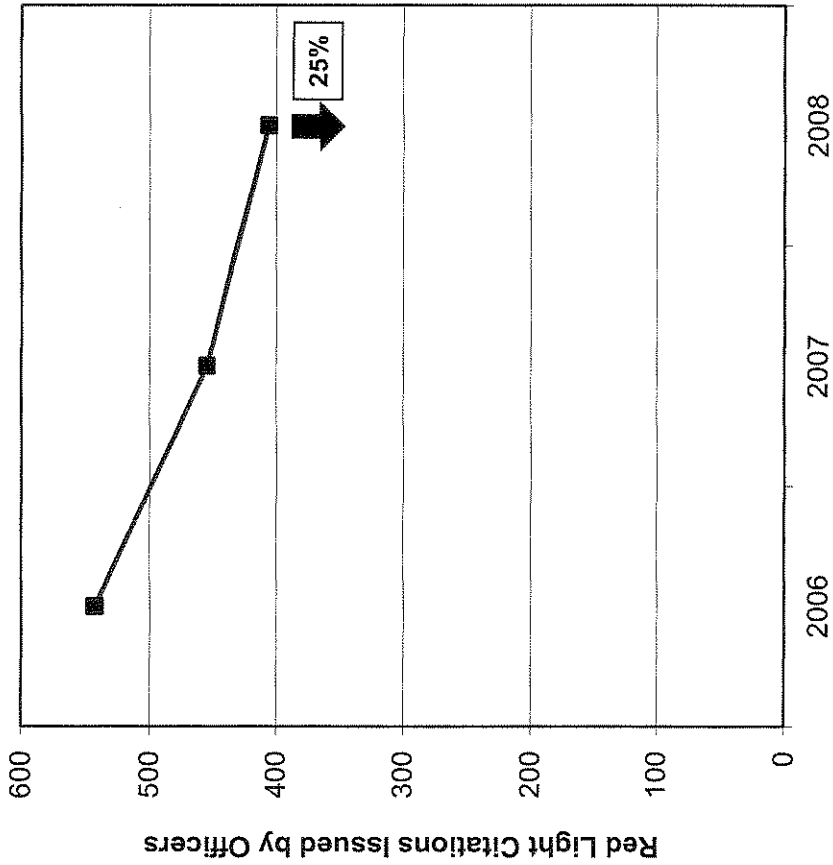
Number of Traffic Citations Issued by Officers 2009-2011



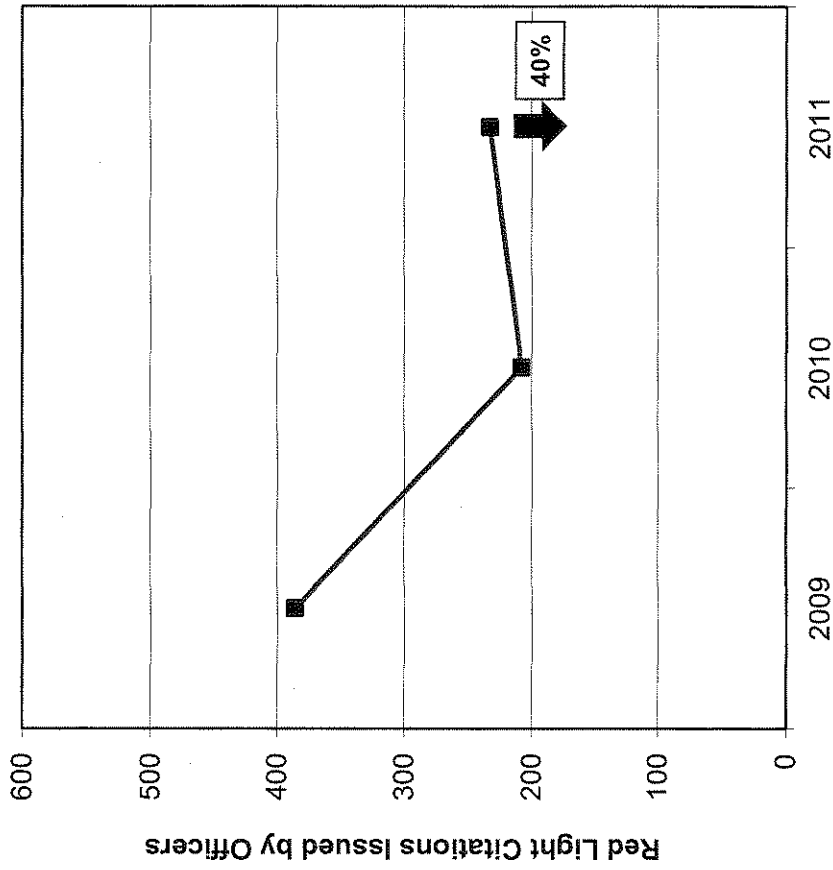
2006	2007	2008	2009	2010	2011	2012*
13590	10142	12051	12365	11123	8962	4024

* Data taken from January 1, 2012 to July 31, 2012

**Red Light Citations Issued by Officers
2006-2008**



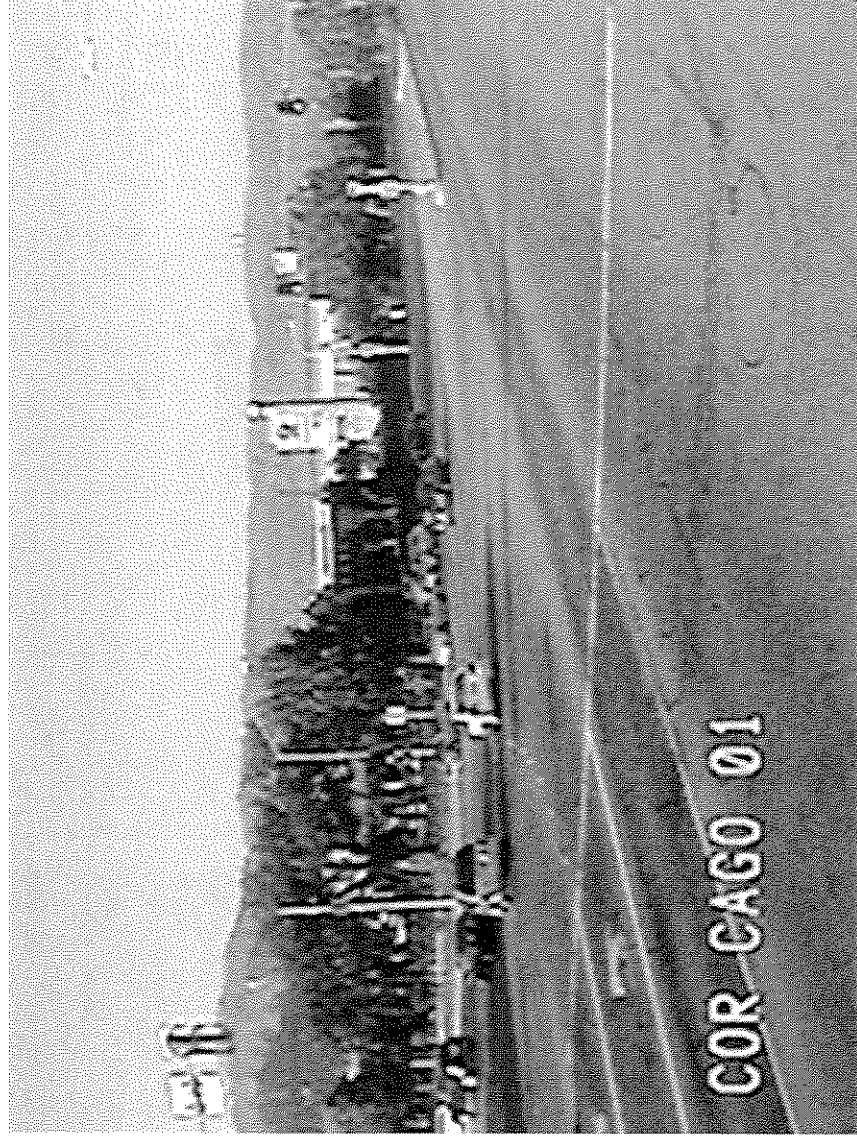
**Red Light Citations Issued by Officers
2009-2011**



2006	2007	2008	2009	2010	2011	2012*
543	455	406	386	208	233	119

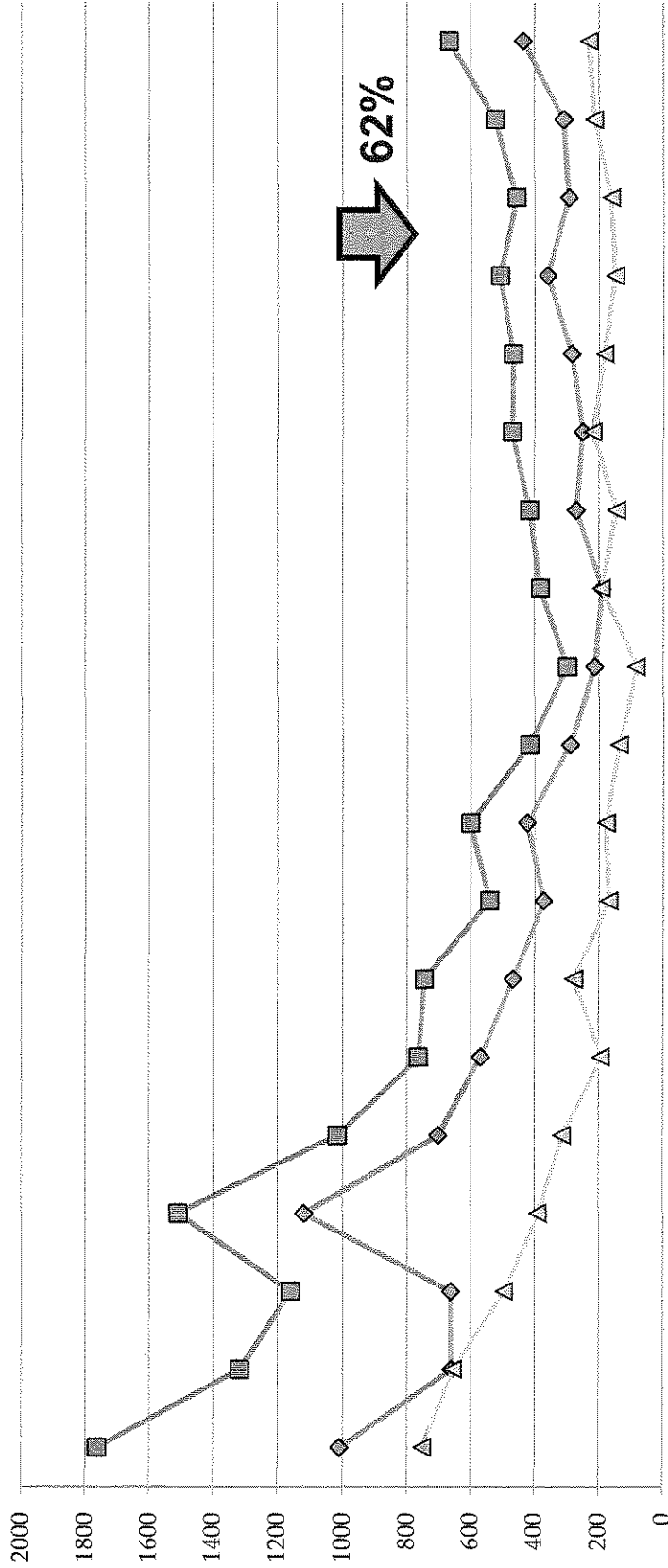
* Data taken from January 1, 2012 to July 31, 2012

Cajalco and Grand Oaks



CAJALCO/GRAND OAKS

Violations Processed Bi-Monthly May 2009 thru June 2012



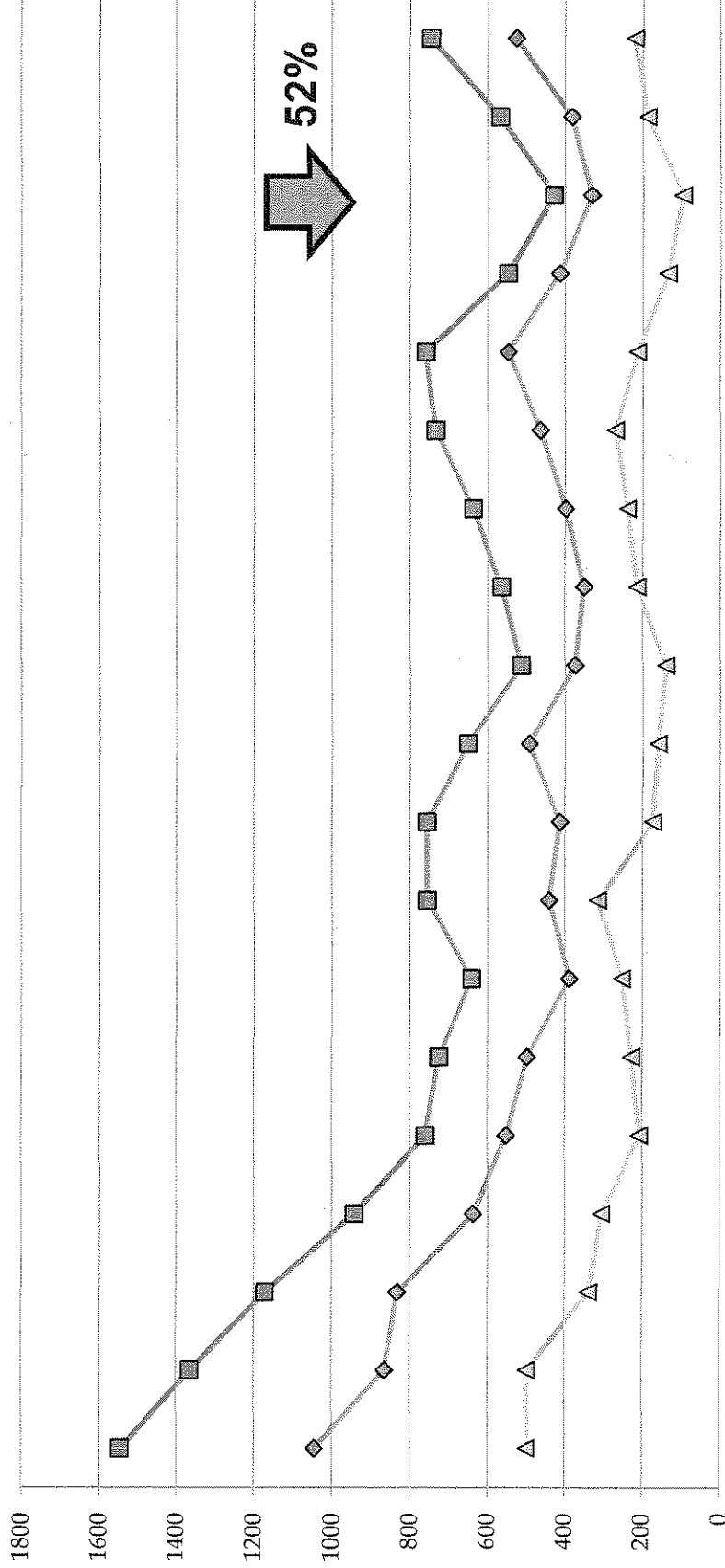
	May/June	July/Aug	Sep/Oct	Nov/Dec	Jan/Feb	Mar/Apr	May/June	July/Aug	Sep/Oct	Nov/Dec	Jan/Feb	Mar/Apr	May/June
CAJALCO/ GRAND OAKS													
Detections	1764	1318	1160	1510	1017	764	746	542	602	416	297	382	417
Rejections	753	656	496	390	314	194	278	170	178	137	83	192	146
Violations Processed	1011	662	664	1120	703	570	468	372	424	289	214	190	271
											2012		
											457	524	668
											163	215	232
											294	309	436

Magnolia and Rimpau



MAGNOLIA/RIMPAU

Violations Processed Bi-Monthly May 2009 thru June 2012

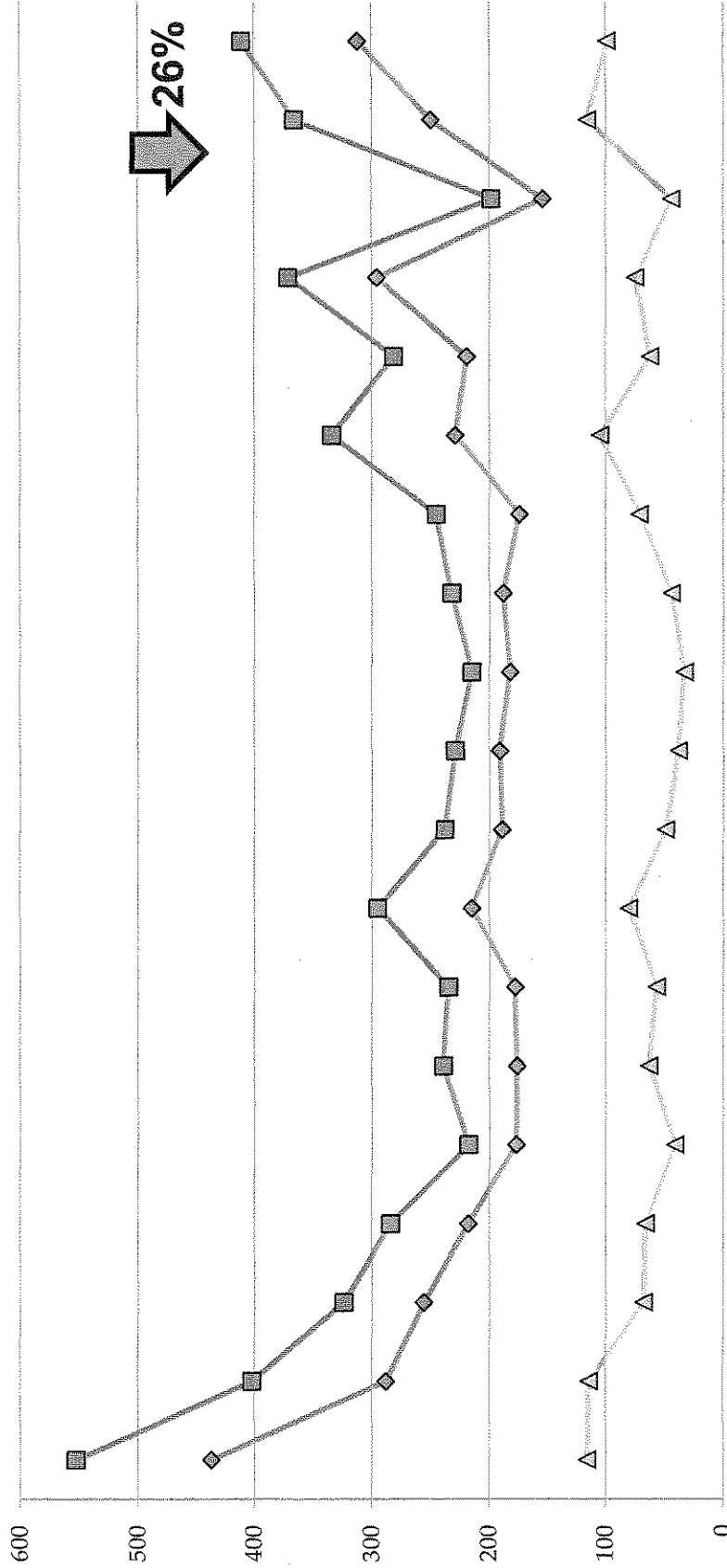


Rimpau and Magnolia



RIMPAU/MAGNOLIA

Violations Processed Bi-Monthly May 2009 thru June 2012



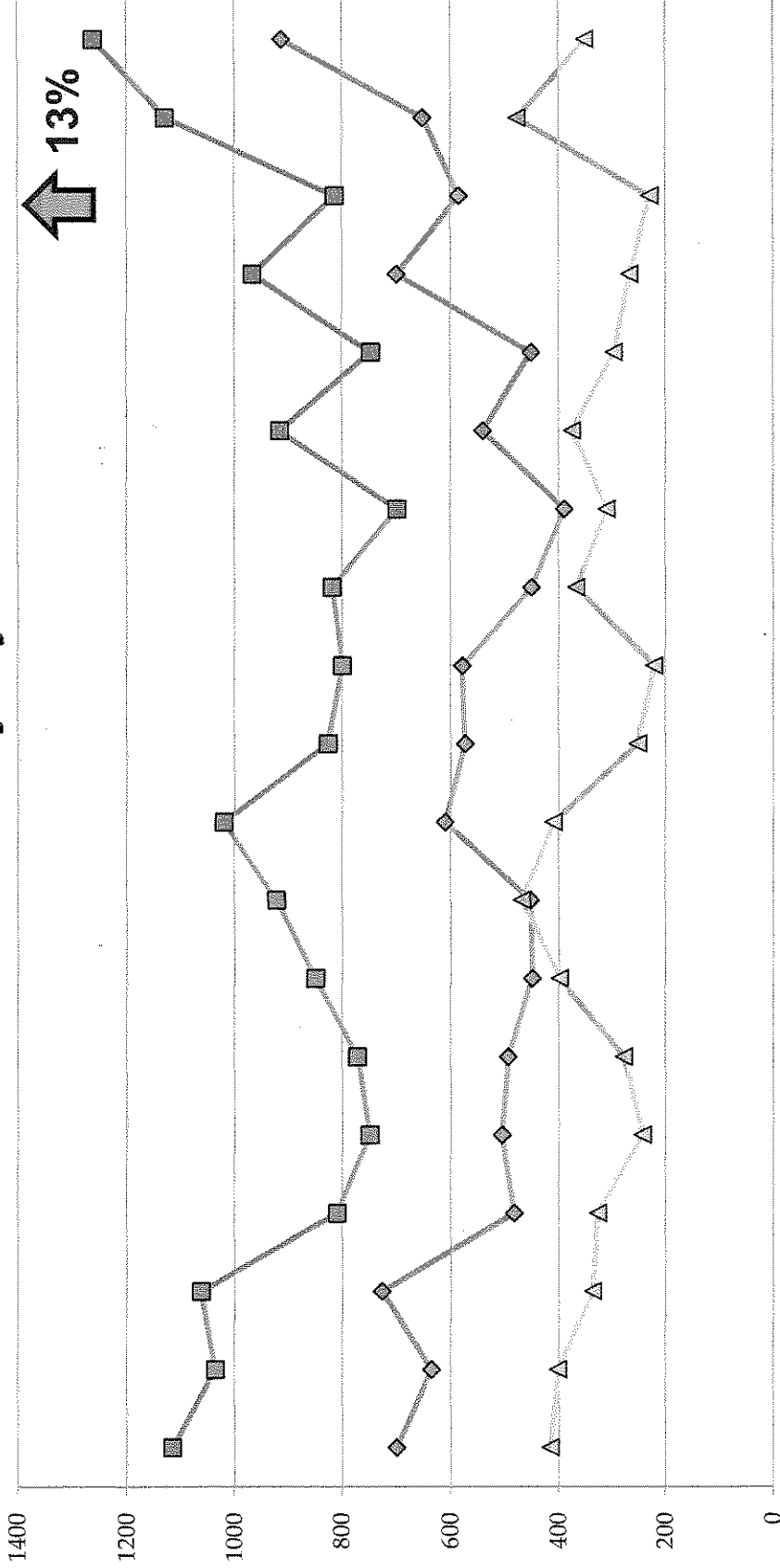
	May/June	Jul/Aug	Sep/Oct	Nov/Dec	Jan/Feb	Mar/Apr	May/June	Jul/Aug	Sep/Oct	Nov/Dec	Jan/Feb	Mar/Apr	May/June	Jul/Aug	Sep/Oct	Nov/Dec	Jan/Feb	Mar/Apr	May/June	
RIMPAU/MAGNOLIA																				
Defections	553	402	324	284	218	239	235	295	238	229	215	232	245	334	281	371	198	366	411	
Rejections	116	114	68	66	41	63	57	80	49	38	33	44	71	105	62	75	44	116	99	
Violations Processed	437	288	256	218	177	176	178	215	189	191	182	188	174	229	219	296	154	250	312	

McKinley and Griffin



MCKINLEY/GRIFFIN

Violations Processed Bi-Monthly May 2009 thru June 2012



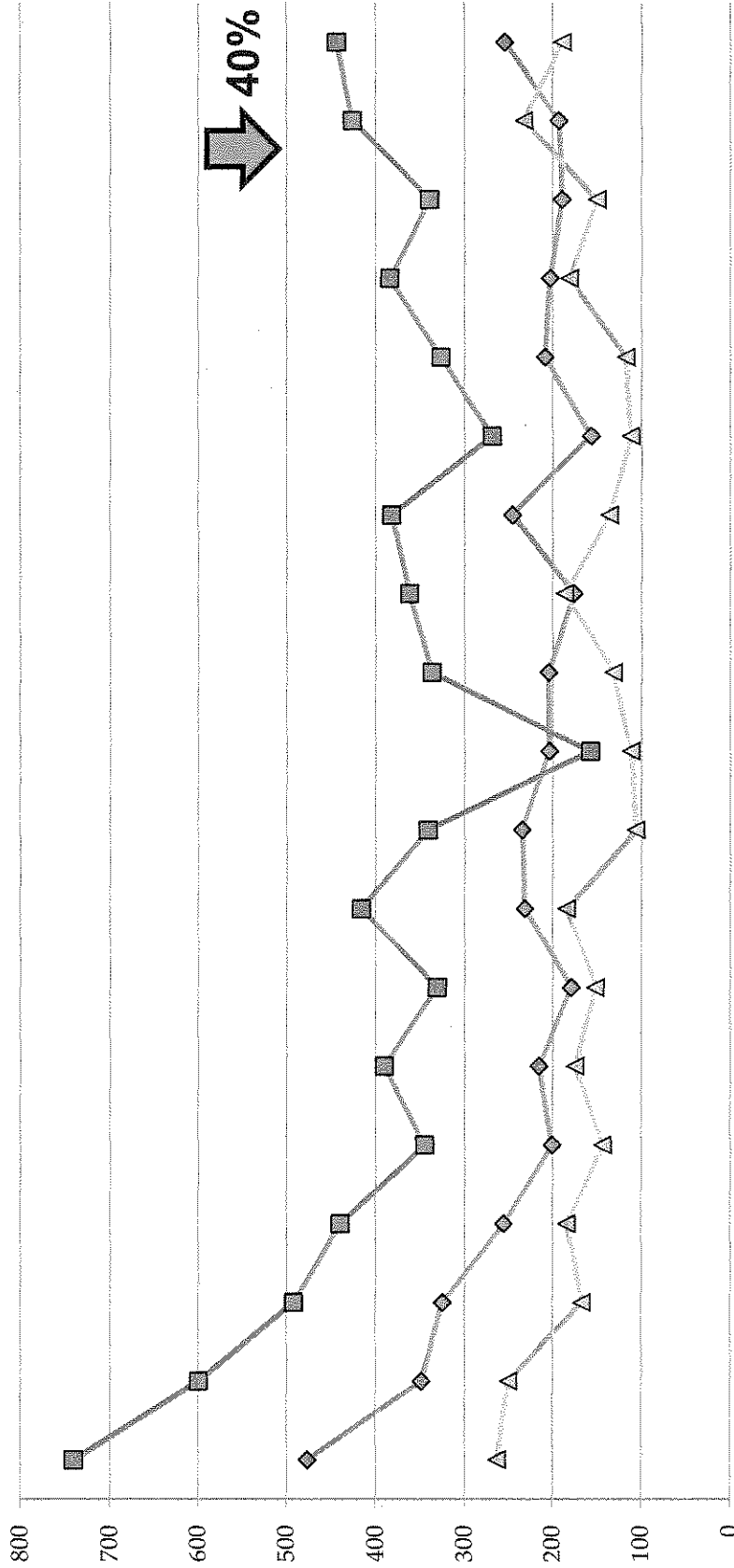
	May/June	July/Aug	Sept/Oct	Nov/Dec	Jan/Feb	Mar/Apr	May/June	July/Aug	Sept/Oct	Nov/Dec	Jan/Feb	Mar/Apr	May/June	July/Aug	Sept/Oct	Nov/Dec	Jan/Feb	Mar/Apr	May/June	
MCKINLEY/ GRIFFIN																				
Detections	1116	1036	1063	809	749	771	849	922	1020	826	799	818	698	916	746	967	813	1130	1262	
Rejections	416	401	336	326	243	277	399	469	410	252	221	367	309	375	295	267	229	478	350	
Violations Processed	700	635	727	483	506	494	450	453	610	574	578	451	389	541	451	700	584	652	912	

Ontario and California



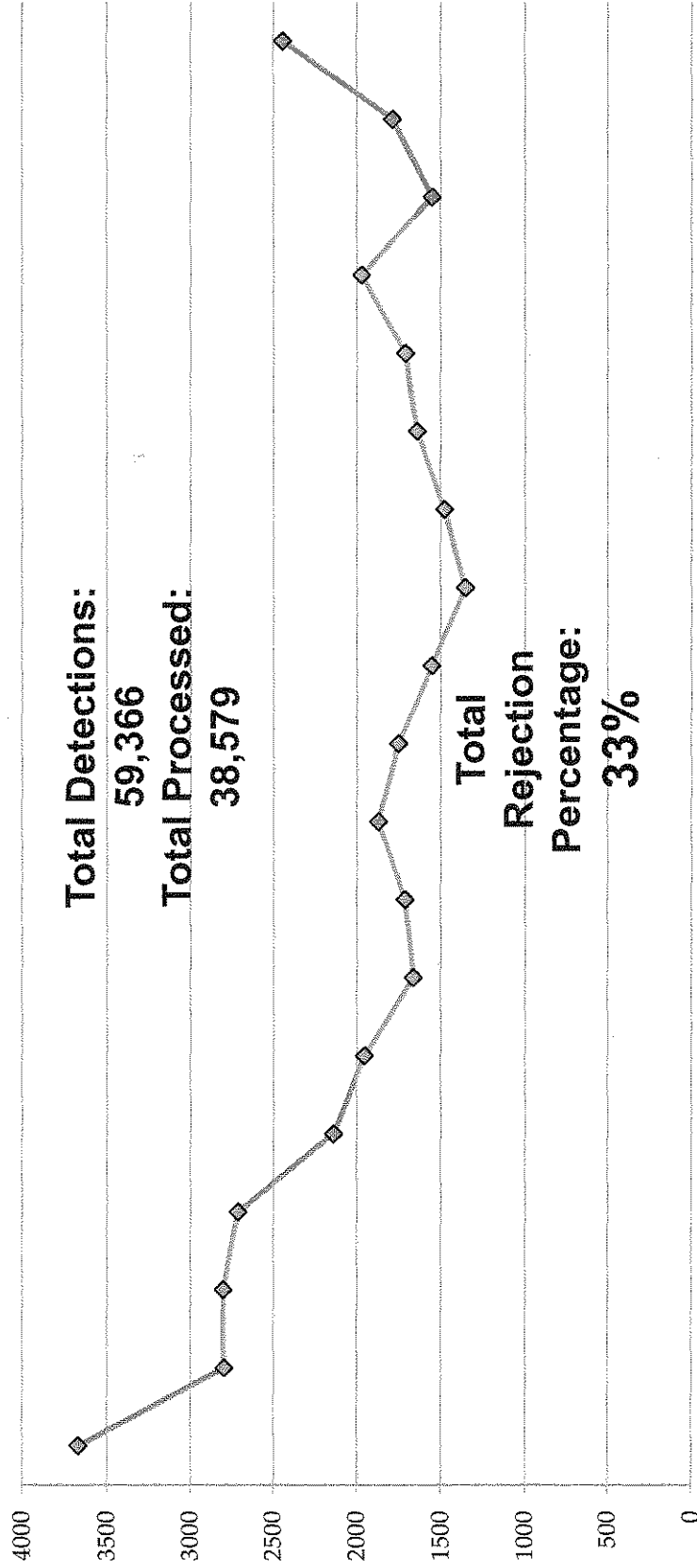
ONTARIO/CALIFORNIA

Violations Processed Bi-Monthly May 2009 thru June 2012



TOTAL VIOLATIONS PROCESSED

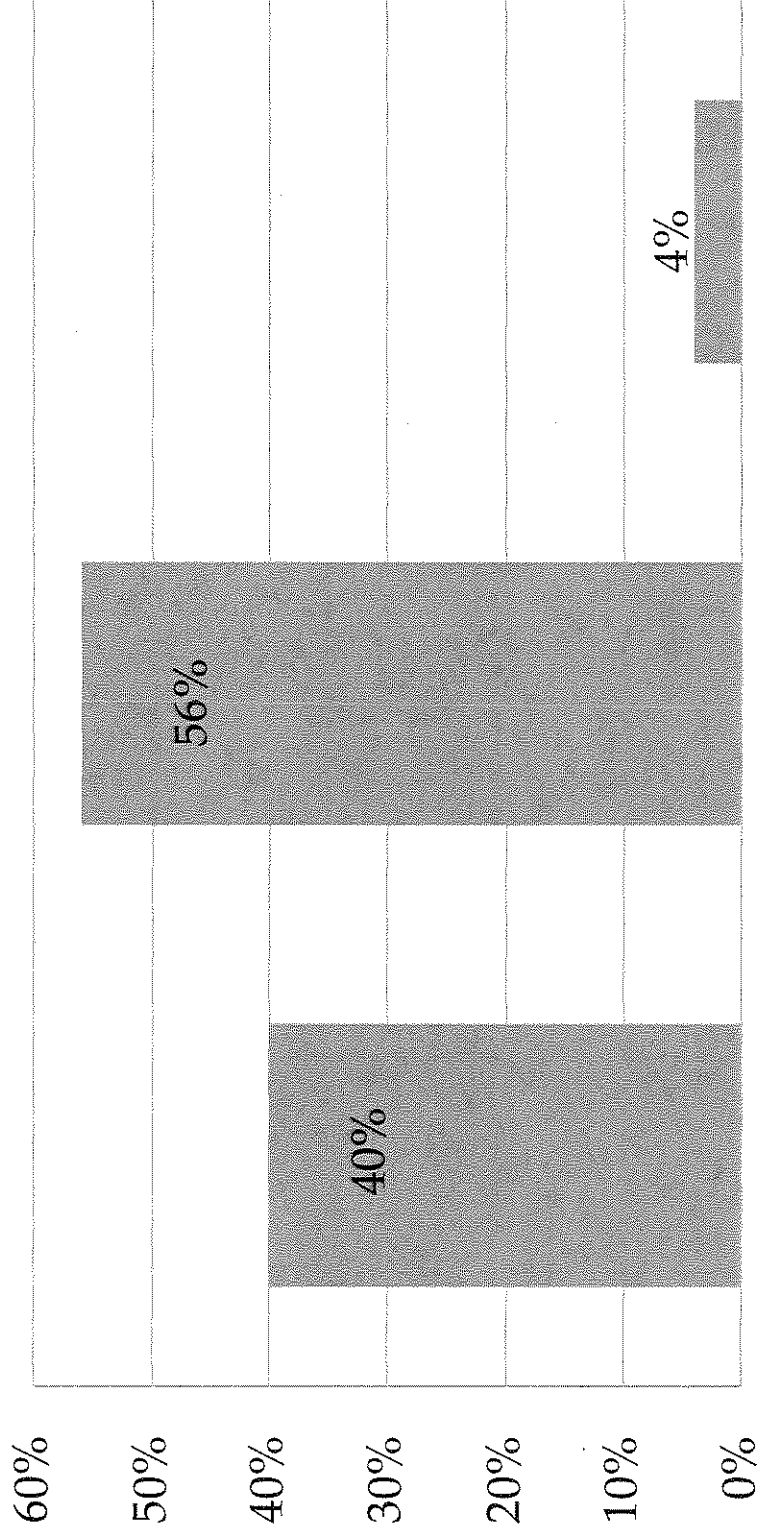
Violations Processed Bi-Monthly May 2009 thru June 2012



ALL LOCATIONS	2009 May/June	Jul/Aug	Sep/Oct	Nov/Dec	2010 Jan/Feb	Mar/Apr	May/June	Jul/Aug	Sep/Oct	Nov/Dec	2012 Jan/Feb	Mar/Apr	May/June	Nov/Dec	Total
TOTAL PROCESSED	3671	2800	2805	2715	2140	1954	1664	1713	1871	1751	1553	1786	2442	38579	

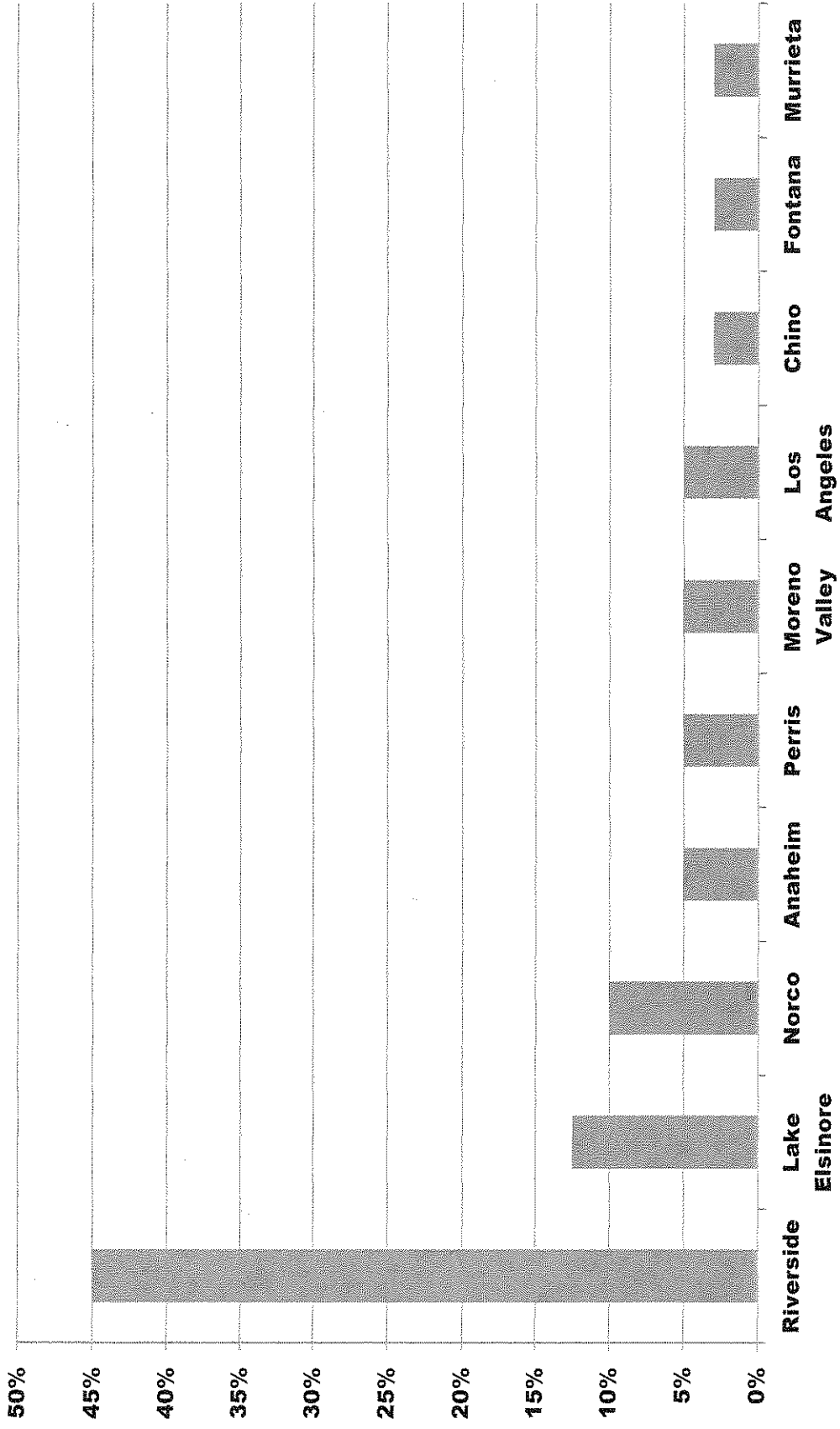
ALL LOCATIONS	2011 Jan/Feb	Mar/Apr	May/June	Jul/Aug	Sep/Oct	Nov/Dec	2012 Jan/Feb	Mar/Apr	May/June	Total
TOTAL PROCESSED	1553	1356	1479	1643	1711	1972	1553	1786	2442	38579

Red Light Violator Addresses



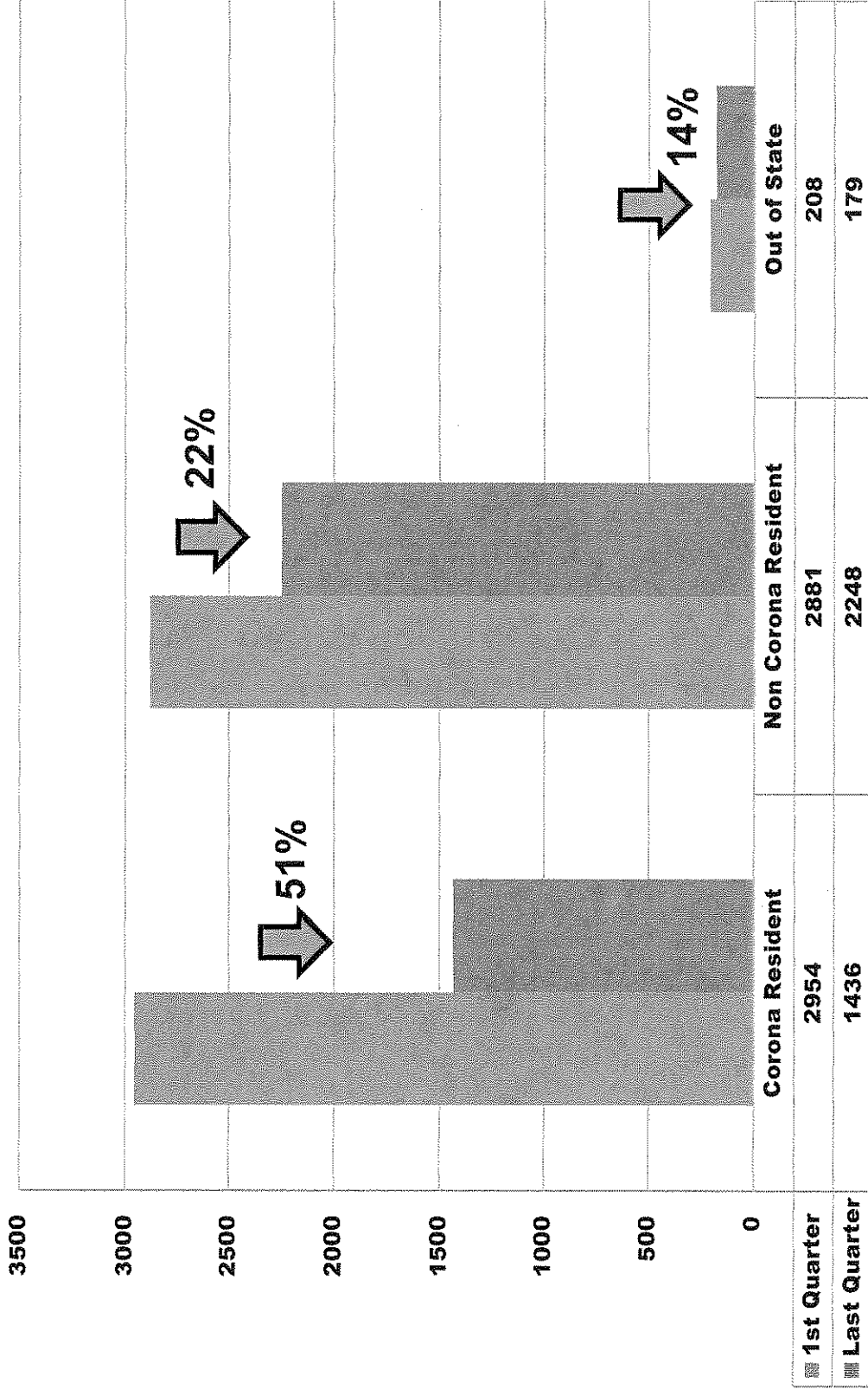
Notices Sent to Corona Addresses Notices Sent to Other Addresses Notices Sent Outside California

Top 10 Non-Corona Violators by City

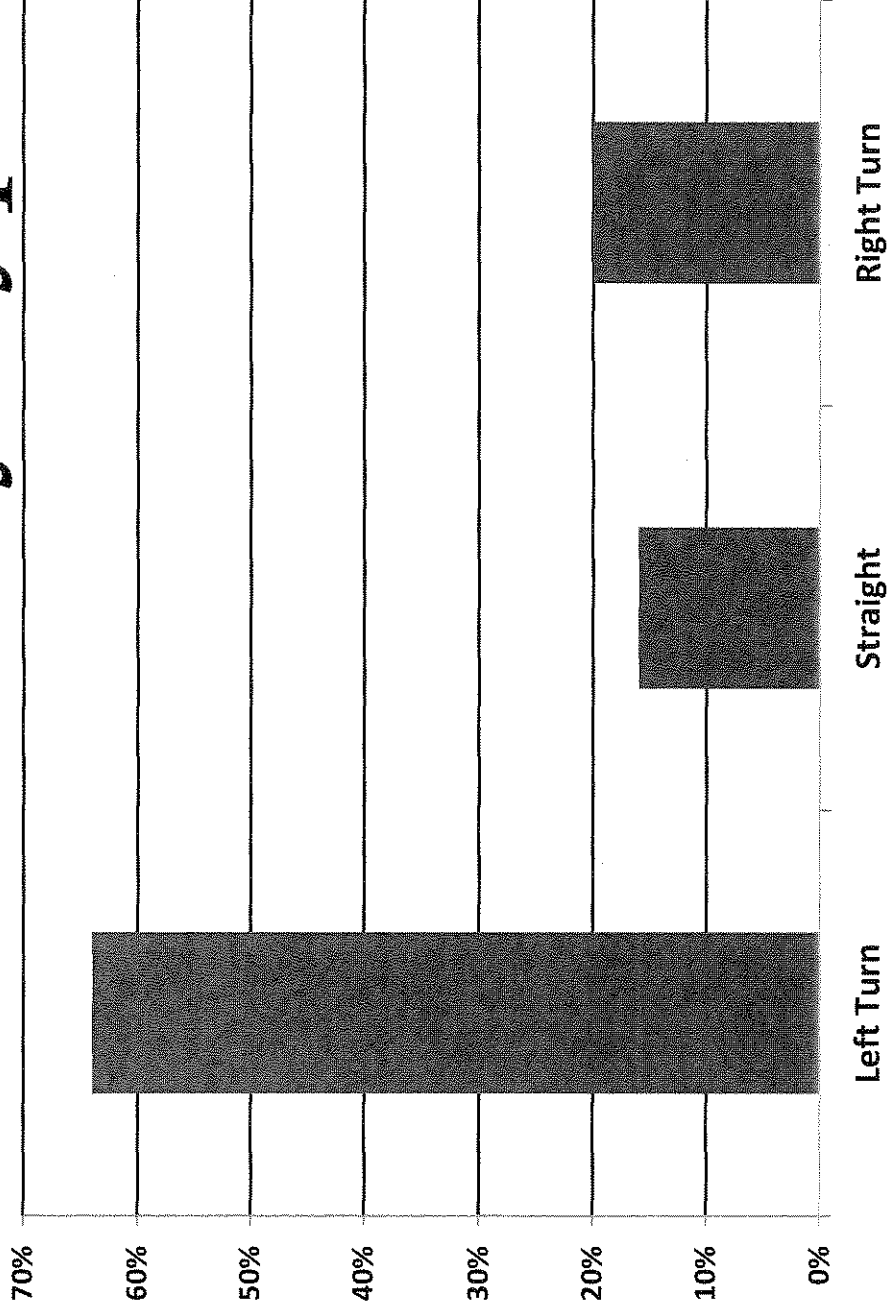


4/1/09 – 6/30/09 versus 4/1/12 – 6/30/12

Violator Addresses

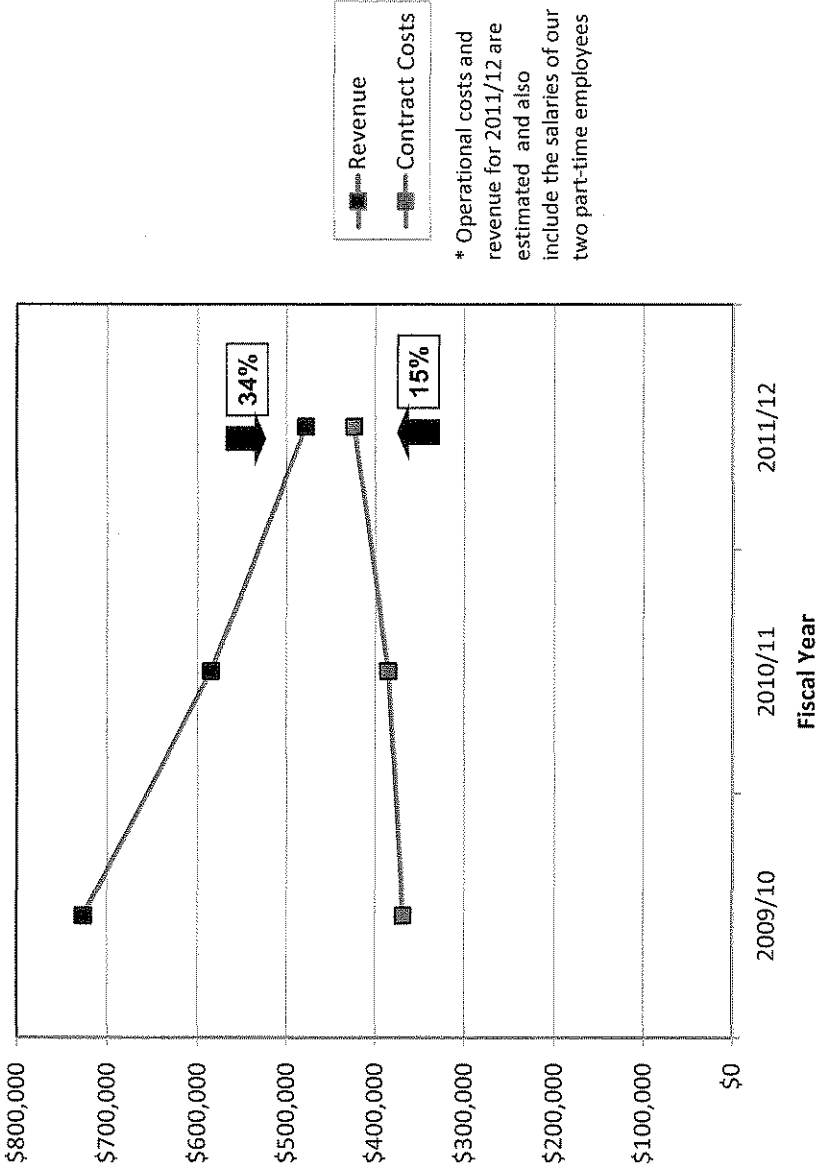


Violations by Type



Left Turn	Straight	Right Turn
64%	16%	20%

Red Light Camera Financial Analysis



* Operational costs and revenue for 2011/12 are estimated and also include the salaries of our two part-time employees

	FY 2009/10	FY 2010/11	FY 2011/12
Revenue	\$726,437	\$584,928	\$478,704
Contract Costs	\$369,219	\$385,395	\$423,937
Net Revenue	\$357,218	\$199,533	\$54,767

Advantages of Camera Enforcement

- The cameras at the four (4) current locations operate around the clock
 - 24 hours a day, 7 days a week
- The current camera systems will provide enforcement when officers are not present
- Safety for the officers at busy intersections
- Red light cameras encourage motorists to be alert, promoting a safe environment to all who use the intersection.

RECOMMENDATIONS

- Add three (3) additional camera intersections
 - No cost to the City
 - Open up a new three (3) year contract with Redflex

OR

- Remove the current cameras
 - Terminate the current contract

Possible Expansion Intersections

- **N. Main / Grand**
 - High traffic volumes, geometry of the roadway
- **Sixth / Lincoln**
 - High traffic volumes, high collision volume
- **Lincoln / Pomona**
 - High traffic volumes, high collision volume
- **Magnolia / Fullerton**
 - High traffic volume, high pedestrian volume, geometry of the roadway
- **Sixth / Main**
 - High traffic volume, geometry of the roadway, high pedestrian volume

**City of Corona Police Department
Red Light Camera
Program**