



Expo Line Monthly Report



Metro

Los Angeles County
Metropolitan Transportation Authority

December 2012

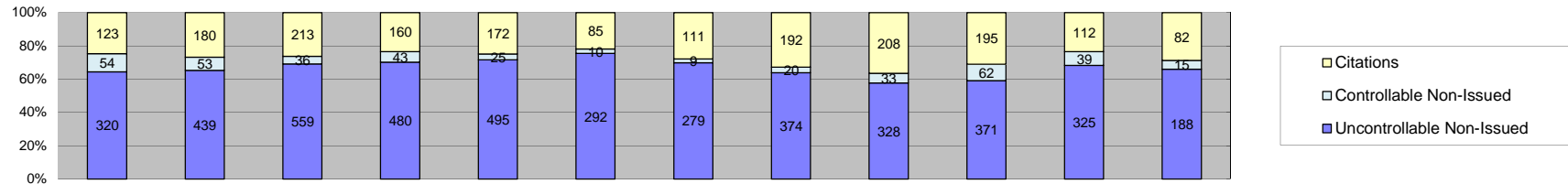


A **xerox**  Company

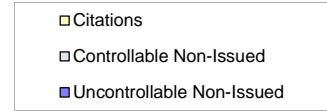
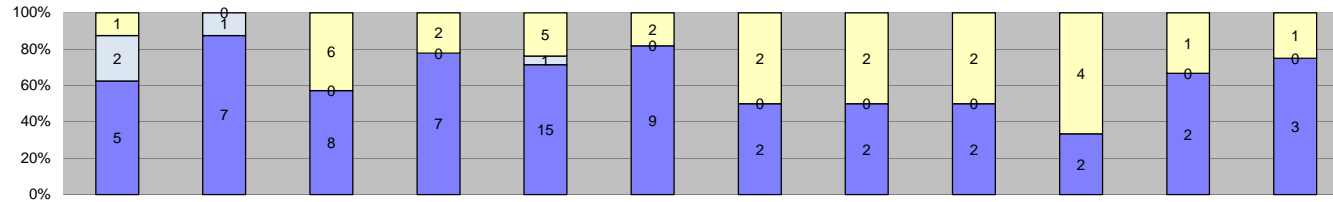
Prepared by: ACS Transportation Solutions
Confidential

Table of Contents

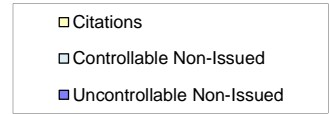
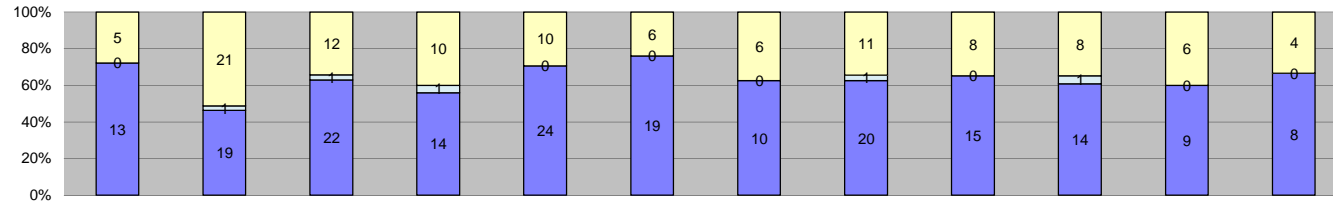
Report Title	Page
<i>Approach Summary Report, All Locations.....</i>	3
<i>Approach Summary Report, Location 5008: SB to EB Flower @ Washington.....</i>	4
<i>Approach Summary Report, Location 5018: SB to WB Flower @ USC Trade Tech.....</i>	5
<i>Approach Summary Report, Location 5028: SB to EB Flower @ 23rd.....</i>	6
<i>Approach Summary Report, Location 5038: SB to EB Flower @ Adams.....</i>	7
<i>Approach Summary Report, Location 5048: SB to EB Flower @ 28th St.....</i>	8
<i>Approach Summary Report, Location 5058: Sb to EB Flower @ 30th St.....</i>	9
<i>Approach Summary Report, Location 5068: SB to EB Flower @ Jefferson.....</i>	10
<i>Approach Summary Report, Location 5077: EB to NB Exposition @ Watt.....</i>	11
<i>Approach Summary Report, Location 5079: WB to SB Exposition @ Bill Robertson.....</i>	12
<i>Approach Summary Report, Location 5087: EB to NB Exposition @ Vermont.....</i>	13
<i>Approach Summary Report, Location 5089: WB to SB Exposition @ Vermont.....</i>	14
<i>Approach Summary Report, Location 5097: EB to NB Exposition @ Raymond.....</i>	15
<i>Approach Summary Report, Location 5107: EB to NB Exposition @ Normandie.....</i>	16
<i>Approach Summary Report, Location 5109: WB to SB Exposition @ Normandie.....</i>	17
<i>Approach Summary Report, Location 5117: EB to NB Exposition @ Halldale.....</i>	18
<i>Approach Summary Report, Location 5119 WB to SB Exposition @ Denker.....</i>	19
<i>Approach Summary Report, Location 5127: EB to NB Exposition @ Western.....</i>	20
<i>Approach Summary Report, Location 5129: WB to SB Exposition @ Western.....</i>	21
<i>Approach Summary Report, Location 5137: EB to SB Exposition @ Crenshaw.....</i>	22
<i>Customer Service Report.....</i>	23
<i>Monthly Citation Yield Report.....</i>	24
<i>Disposition Summary Report.....</i>	25
<i>Performance Report.....</i>	26



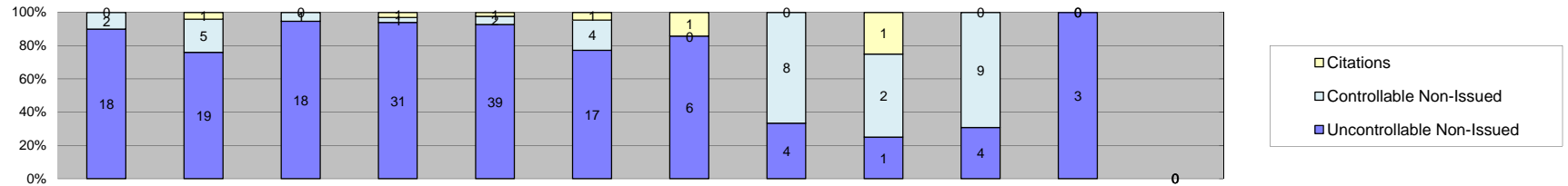
Events	2012												Year to Date Monthly Average		2011 Monthly Average	
	Jan-12	Feb-12	Mar-12	Apr-12	May-12	Jun-12	Jul-12	Aug-12	Sep-12	Oct-12	Nov-12	Dec-12	Quantity	%	Quantity	%
Non-Violations	3,371	4,868	5,012	4,943	5,290	4,209	3,536	3,284	5,071	5,329	3,814	3,199	4,327	89%	0	0%
Violations	497	672	808	683	692	387	399	586	689	628	476	285	557	11%	0	0%
Total:	3,868	5,540	5,820	5,626	5,982	4,596	3,935	3,870	5,640	5,957	4,290	3,484	4,884	100%	0	0%
Violations																
Uncontrollable Non-Issued	320	439	559	480	495	292	279	374	328	371	325	188	371	67%	0	0%
Controllable Non-Issued	54	53	36	43	25	10	9	20	33	62	39	15	33	6%	0	0%
Citations	123	180	213	160	172	85	111	192	208	195	112	82	153	27%	0	0%
Total:	497	672	808	683	692	387	399	586	569	628	476	285	557	73%	0	0%
Non-Violations																
Rear Axle Violation	17	46	24	48	2	3	6	11	2	5	6	2	14	0%	0	0%
Emergency Vehicle	41	78	61	45	54	41	42	73	48	61	33	23	50	1%	0	0%
Right Turn	0	0	0	0	0	0	0	0	0	0	0	0	0	0%	0	0%
No Violation Occurred	3,313	4,744	4,927	4,850	5,234	4,165	3,488	3,200	5,021	5,263	3,775	3,174	4,263	99%	0	0%
Total:	3,371	4,868	5,012	4,943	5,290	4,209	3,536	3,284	5,071	5,329	3,814	3,199	4,327	100%	0	0%
Uncontrollable Non-Issued Violations																
No Plate	45	57	74	51	54	34	33	51	67	66	59	24	51	13%	0	0%
Out of State Plate	3	7	7	7	5	2	7	8	12	8	2	3	6	2%	0	0%
Glare on Plate	6	6	15	5	48	8	10	9	13	14	8	1	12	3%	0	0%
Illegible Plate	21	44	72	47	46	35	31	60	53	52	43	21	44	11%	0	0%
Plate Obstructed	6	12	9	11	8	4	4	16	8	7	8	2	8	2%	0	0%
Windshield Glare	28	42	42	50	55	48	46	52	25	37	33	24	40	10%	0	0%
Driver Obstructed	27	30	37	23	21	12	27	26	20	26	25	9	24	6%	0	0%
Car Obstructed	32	46	50	61	79	35	12	12	9	4	5	1	29	7%	0	0%
No DMV Match Found	45	61	69	65	21	27	21	54	12	0	0	0	42	11%	0	0%
LASD Expired	0	6	3	32	9	22	0	0	1	0	7	17	12	3%	0	0%
LASD Return	107	128	181	128	149	65	88	86	108	157	134	82	118	30%	0	0%
Other	0	0	0	0	0	0	0	0	0	0	1	4	3	1%	0	0%
Total:	320	439	559	480	495	292	279	374	328	371	325	188	387	100%	0	0%
Controllable Non-Issued Violations																
Framing of Plate	4	0	0	1	0	0	0	1	0	0	0	0	2	4%	0	0%
Focus / Clarity of Plate	0	2	0	3	6	0	0	0	1	1	0	0	3	5%	0	0%
Dark Interior	34	19	17	8	6	3	5	7	4	6	28	11	12	26%	0	0%
Framing of Driver	0	0	2	1	0	0	0	0	2	1	0	0	2	3%	0	0%
Focus / Clarity of Driver	0	0	0	0	0	0	0	0	0	0	3	0	3	6%	0	0%
Framing of Car	6	2	1	2	1	0	1	0	3	1	0	0	2	4%	0	0%
Data/Operator Error	3	0	0	9	0	0	0	8	1	0	0	0	5	11%	0	0%
Exposure	3	7	11	3	6	7	3	4	20	45	7	1	10	20%	0	0%
Equipment Malfunction	4	21	5	16	6	0	0	0	2	8	1	3	7	15%	0	0%
ACS Expired	0	2	0	0	0	0	0	0	0	0	0	0	2	4%	0	0%
Total:	54	53	36	43	25	10	9	20	33	62	39	15	48	100%	0	0%
Summary Metrics																
Daily Average Vehicle Passes	12,177	14,277	17,026	14,896	16,978	11,466	14,724	14,261	16,315	21,448	18,999	11,806	Year to Date Monthly Average		2011 Monthly Average	
Average Issued Speed	20	20	20	20	20	21	22	21	21	20	21	21	15,365		0	
Average Issued Red Seconds	63.3	53.7	29.4	67.6	60.8	39.9	55.6	39.4	72.8	76.1	70.7	58.8	57.3		0.0	
Citation / Violation Issuance Rate	25%	27%	26%	23%	25%	22%	28%	33%	37%	31%	24%	29%	27%		0%	
Controllable Issuance Rate	69%	77%	86%	79%	87%	89%	93%	91%	86%	76%	74%	85%	83%		0%	



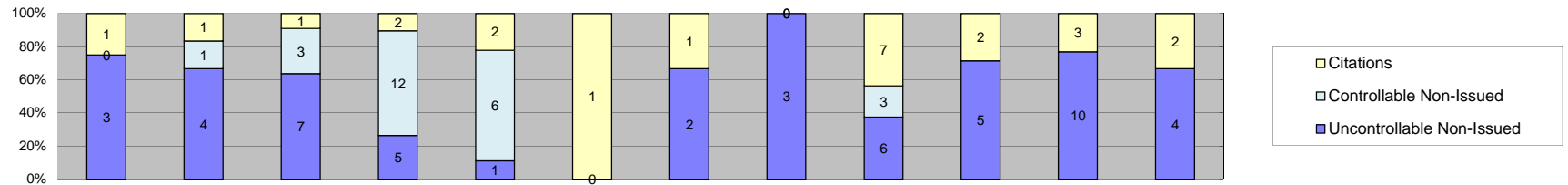
Events	2012												Year to Date Monthly Average		2011 Monthly Average	
	Jan-12	Feb-12	Mar-12	Apr-12	May-12	Jun-12	Jul-12	Aug-12	Sep-12	Oct-12	Nov-12	Dec-12	Quantity	%	Quantity	%
Non-Violations	86	110	95	67	84	71	65	79	72	99	92	68	82	91%	0	0%
Violations	8	8	14	9	21	11	4	4	4	6	3	4	8	9%	0	0%
Total:	94	118	109	76	105	82	69	83	76	105	95	72	90	100%	0	0%
Violations																
Uncontrollable Non-Issued	5	7	8	7	15	9	2	2	2	2	2	3	5	58%	0	0%
Controllable Non-Issued	2	1	0	0	1	0	0	0	0	0	0	0	1	14%	0	0%
Citations	1	0	6	2	5	2	2	2	2	4	1	1	3	28%	0	0%
Total:	8	8	14	9	21	11	4	4	4	6	3	4	9	72%	0	0%
Non-Violations																
Rear Axle Violation	0	0	0	0	0	0	0	0	0	0	1	0	1	1%	0	0%
Emergency Vehicle	1	3	1	1	7	2	1	4	1	5	2	2	3	3%	0	0%
Right Turn	0	0	0	0	0	0	0	0	0	0	0	0	0	0%	0	0%
No Violation Occurred	85	107	94	66	77	69	64	75	71	94	89	66	80	96%	0	0%
Total:	86	110	95	67	84	71	65	79	72	99	92	68	83	100%	0	0%
Uncontrollable Non-Issued Violations																
No Plate	2	1	0	0	1	1	0	2	2	2	0	0	2	11%	0	0%
Out of State Plate	0	0	0	0	0	0	0	0	0	0	0	0	0	0%	0	0%
Glare on Plate	0	0	1	0	1	0	1	0	0	0	1	1	1	7%	0	0%
Illegible Plate	0	0	1	0	1	2	0	0	0	0	1	1	1	8%	0	0%
Plate Obstructed	0	0	0	0	0	1	0	0	0	0	0	0	1	7%	0	0%
Windshield Glare	0	0	0	0	0	0	0	0	0	0	0	0	0	0%	0	0%
Driver Obstructed	0	1	0	1	0	0	0	0	0	0	0	0	1	7%	0	0%
Car Obstructed	1	4	5	6	10	3	0	0	0	0	0	0	5	34%	0	0%
No DMV Match Found	2	0	1	0	0	1	1	0	0	0	0	0	1	9%	0	0%
LASD Expired	0	0	0	0	0	1	0	0	0	0	0	1	1	7%	0	0%
LASD Return	0	1	0	0	2	0	0	0	0	0	0	0	2	10%	0	0%
Other	0	0	0	0	0	0	0	0	0	0	0	0	0	0%	0	0%
Total:	5	7	8	7	15	9	2	2	2	2	2	3	14	100%	0	0%
Controllable Non-Issued Violations																
Framing of Plate	0	0	0	0	0	0	0	0	0	0	0	0	0	0%	0	0%
Focus / Clarity of Plate	0	0	0	0	0	0	0	0	0	0	0	0	0	0%	0	0%
Dark Interior	1	1	0	0	0	0	0	0	0	0	0	0	1	33%	0	0%
Framing of Driver	0	0	0	0	0	0	0	0	0	0	0	0	0	0%	0	0%
Focus / Clarity of Driver	0	0	0	0	0	0	0	0	0	0	0	0	0	0%	0	0%
Framing of Car	1	0	0	0	0	0	0	0	0	0	0	0	1	33%	0	0%
Data/Operator Error	0	0	0	0	0	0	0	0	0	0	0	0	0	0%	0	0%
Exposure	0	0	0	0	1	0	0	0	0	0	0	0	1	33%	0	0%
Equipment Malfunction	0	0	0	0	0	0	0	0	0	0	0	0	0	0%	0	0%
ACS Expired	0	0	0	0	0	0	0	0	0	0	0	0	0	0%	0	0%
Total:	2	1	0	0	1	0	0	0	0	0	0	0	3	100%	0	0%
Summary Metrics																
Daily Average Vehicle Passes	596	589	583	504	709	450	573	573	555	541	571	567	Year to Date Monthly Average		2011 Monthly Average	
Average Issued Speed	15	0	19	21	23	17	21	21	17	23	22	19	568		0	
Average Issued Red Seconds	19.9	0	28.9	8.5	0.8	1.5	0.7	0.3	0.5	25.5	0.3	0.3	7.9		0.0	
Citation / Violation Issuance Rate	13%	0%	43%	22%	24%	18%	50%	50%	50%	67%	33%	25%	36%		0%	
Controllable Issuance Rate	33%	0%	100%	100%	83%	100%	100%	100%	100%	100%	100%	100%	92%		0%	



Events	Jan-12												Year to Date Monthly Average		2011 Monthly Average	
	Jan-12	Feb-12	Mar-12	Apr-12	May-12	Jun-12	Jul-12	Aug-12	Sep-12	Oct-12	Nov-12	Dec-12	Quantity	%	Quantity	%
Non-Violations	33	96	95	69	87	67	57	84	95	100	55	58	75	75%	0	0%
Violations	18	41	35	25	34	25	16	32	23	23	15	12	25	25%	0	0%
Total:	51	137	130	94	121	92	73	116	118	123	70	70	100	100%	0	0%
Violations																
Uncontrollable Non-Issued	13	19	22	14	24	19	10	20	15	14	9	8	16	61%	0	0%
Controllable Non-Issued	0	1	1	1	0	0	0	1	0	1	0	0	1	4%	0	0%
Citations	5	21	12	10	10	6	6	11	8	8	6	4	9	35%	0	0%
Total:	18	41	35	25	34	25	16	32	23	23	15	12	26	65%	0	0%
Non-Violations																
Rear Axle Violation	0	0	0	0	0	0	0	0	0	0	0	0	0	0%	0	0%
Emergency Vehicle	0	2	0	0	4	2	0	4	3	5	0	2	3	4%	0	0%
Right Turn	0	0	0	0	0	0	0	0	0	0	0	0	0	0%	0	0%
No Violation Occurred	33	94	95	69	83	65	57	80	92	95	55	56	73	96%	0	0%
Total:	33	96	95	69	87	67	57	84	95	100	55	58	76	100%	0	0%
Uncontrollable Non-Issued Violations																
No Plate	3	7	0	4	8	2	5	3	7	4	5	3	5	19%	0	0%
Out of State Plate	0	0	2	0	0	0	0	1	1	0	0	0	1	5%	0	0%
Glare on Plate	0	0	3	0	3	3	0	0	0	0	0	0	3	12%	0	0%
Illegible Plate	1	2	7	2	3	3	0	1	0	1	0	0	3	10%	0	0%
Plate Obstructed	0	0	0	0	0	0	0	0	0	1	0	0	1	4%	0	0%
Windshield Glare	0	0	1	1	2	3	1	2	1	3	0	3	2	8%	0	0%
Driver Obstructed	6	6	3	2	2	3	3	11	3	3	2	2	4	15%	0	0%
Car Obstructed	0	0	1	0	2	3	0	0	0	0	0	0	2	8%	0	0%
No DMV Match Found	0	0	1	2	0	0	0	1	0	0	0	0	1	5%	0	0%
LASD Expired	0	1	0	1	0	1	0	0	0	0	0	0	1	4%	0	0%
LASD Return	3	3	4	2	4	1	1	1	3	2	2	0	2	9%	0	0%
Other	0	0	0	0	0	0	0	0	0	0	0	0	0	0%	0	0%
Total:	13	19	22	14	24	19	10	20	15	14	9	8	25	100%	0	0%
Controllable Non-Issued Violations																
Framing of Plate	0	0	0	0	0	0	0	0	0	0	0	0	0	0%	0	0%
Focus / Clarity of Plate	0	1	0	0	0	0	0	0	0	0	0	0	1	33%	0	0%
Dark Interior	0	0	1	0	0	0	0	0	0	0	0	0	1	33%	0	0%
Framing of Driver	0	0	0	0	0	0	0	0	0	0	0	0	0	0%	0	0%
Focus / Clarity of Driver	0	0	0	0	0	0	0	0	0	0	0	0	0	0%	0	0%
Framing of Car	0	0	0	0	0	0	0	0	0	0	0	0	0	0%	0	0%
Data/Operator Error	0	0	0	0	0	0	0	0	0	0	0	0	0	0%	0	0%
Exposure	0	0	0	1	0	0	0	1	0	1	0	0	1	33%	0	0%
Equipment Malfunction	0	0	0	0	0	0	0	0	0	0	0	0	0	0%	0	0%
ACS Expired	0	0	0	0	0	0	0	0	0	0	0	0	0	0%	0	0%
Total:	0	1	1	1	0	0	0	1	0	1	0	0	3	100%	0	0%
Summary Metrics																
Daily Average Vehicle Passes	94	521	642	405	604	129	178	338	586	583	598	567	Year to Date Monthly Average		2011 Monthly Average	
Average Issued Speed	17	18	21	19	19	17	18	18	21	20	22	22	437		0	
Average Issued Red Seconds	76.5	57.3	36.4	22.4	24.3	40.7	30.7	35.2	17.7	11.4	15.5	31.2	33.3		0.0	
Citation / Violation Issuance Rate	28%	51%	34%	40%	29%	24%	38%	34%	35%	35%	40%	33%	35%		0%	
Controllable Issuance Rate	100%	95%	92%	91%	100%	100%	100%	92%	100%	89%	100%	100%	97%		0%	



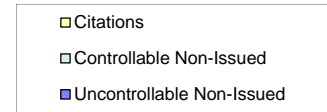
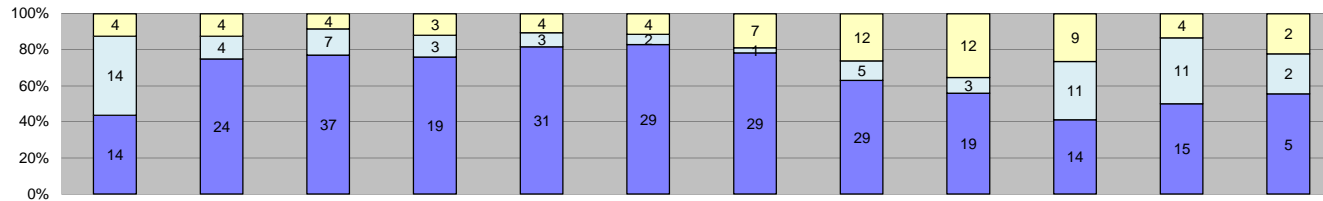
Events	Jan-12	Feb-12	Mar-12	Apr-12	May-12	Jun-12	Jul-12	Aug-12	Sep-12	Oct-12	Nov-12	Dec-12	Year to Date Monthly Average		2011 Monthly Average	
	Quantity	Quantity	Quantity	Quantity	Quantity	Quantity	Quantity	Quantity	Quantity	Quantity	Quantity	Quantity	Quantity	%	Quantity	%
Non-Violations	1,237	1,459	1,588	1,581	1,942	1,551	841	525	1,516	1,429	1,086	885	1,303	99%	0	0%
Violations	20	25	19	33	42	22	7	12	4	13	3	0	18	1%	0	0%
Total:	1,257	1,484	1,607	1,614	1,984	1,573	848	537	1,520	1,442	1,089	885	1,322	100%	0	0%
Violations																
Uncontrollable Non-Issued	18	19	18	31	39	17	6	4	1	4	3	0	15	75%	0	0%
Controllable Non-Issued	2	5	1	1	2	4	0	8	2	9	0	0	4	20%	0	0%
Citations	0	1	0	1	1	1	1	0	1	0	0	0	1	5%	0	0%
Total:	20	25	19	33	42	22	7	12	4	13	3	0	19	95%	0	0%
Non-Violations																
Rear Axle Violation	0	0	0	0	0	0	0	0	0	0	0	0	0	0%	0	0%
Emergency Vehicle	0	5	0	1	1	0	0	1	0	0	1	0	2	0%	0	0%
Right Turn	0	0	0	0	0	0	0	0	0	0	0	0	0	0%	0	0%
No Violation Occurred	1,237	1,454	1,588	1,580	1,941	1,551	841	524	1,516	1,429	1,085	885	1,303	100%	0	0%
Total:	1,237	1,459	1,588	1,581	1,942	1,551	841	525	1,516	1,429	1,086	885	1,304	100%	0	0%
Uncontrollable Non-Issued Violations																
No Plate	0	0	0	2	0	0	0	1	0	1	1	0	1	6%	0	0%
Out of State Plate	0	0	0	0	0	0	0	0	0	0	0	0	0	0%	0	0%
Glare on Plate	0	0	0	0	0	0	0	0	0	0	0	0	0	0%	0	0%
Illegible Plate	0	0	0	0	0	0	0	0	0	0	1	0	1	5%	0	0%
Plate Obstructed	0	0	0	0	0	0	0	0	0	0	0	0	0	0%	0	0%
Windshield Glare	0	0	1	0	0	0	1	0	0	0	0	0	1	5%	0	0%
Driver Obstructed	0	0	1	0	0	0	0	0	0	0	0	0	1	5%	0	0%
Car Obstructed	17	18	15	27	39	17	4	3	1	1	0	0	14	66%	0	0%
No DMV Match Found	0	0	0	2	0	0	0	0	0	0	0	0	2	9%	0	0%
LASD Expired	0	0	0	0	0	0	0	0	0	0	0	0	0	0%	0	0%
LASD Return	1	1	1	0	0	0	1	0	0	2	1	0	1	5%	0	0%
Other	0	0	0	0	0	0	0	0	0	0	0	0	0	0%	0	0%
Total:	18	19	18	31	39	17	6	4	1	4	3	0	22	100%	0	0%
Controllable Non-Issued Violations																
Framing of Plate	0	0	0	0	0	0	0	0	0	0	0	0	0	0%	0	0%
Focus / Clarity of Plate	0	0	0	0	0	0	0	0	0	0	0	0	0	0%	0	0%
Dark Interior	0	0	1	0	1	0	0	0	0	0	0	0	1	12%	0	0%
Framing of Driver	0	0	0	0	0	0	0	0	0	0	0	0	0	0%	0	0%
Focus / Clarity of Driver	0	0	0	0	0	0	0	0	0	0	0	0	0	0%	0	0%
Framing of Car	0	0	0	0	0	0	0	0	0	0	0	0	0	0%	0	0%
Data/Operator Error	1	0	0	0	0	0	0	8	1	0	0	0	3	40%	0	0%
Exposure	1	4	0	1	1	4	0	0	1	9	0	0	3	36%	0	0%
Equipment Malfunction	0	1	0	0	0	0	0	0	0	0	0	0	1	12%	0	0%
ACS Expired	0	0	0	0	0	0	0	0	0	0	0	0	0	0%	0	0%
Total:	2	5	1	1	2	4	0	8	2	9	0	0	8	100%	0	0%
Summary Metrics																
Daily Average Vehicle Passes	221	258	436	242	353	168	182	149	377	365	374	367	Year to Date Monthly Average		2011 Monthly Average	
Average Issued Speed	0	23	0	25	20	24	33	0	29	0	0	0	291		0	
Average Issued Red Seconds	0	38.9	0	57.1	46.9	67.2	75.0	0	40.9	0	0	0	54.3		0.0	
Citation / Violation Issuance Rate	0%	4%	0%	3%	2%	5%	14%	0%	25%	0%	0%	0%	9%		0%	
Controllable Issuance Rate	0%	17%	0%	50%	33%	20%	100%	0%	33%	0%	0%	0%	42%		0%	



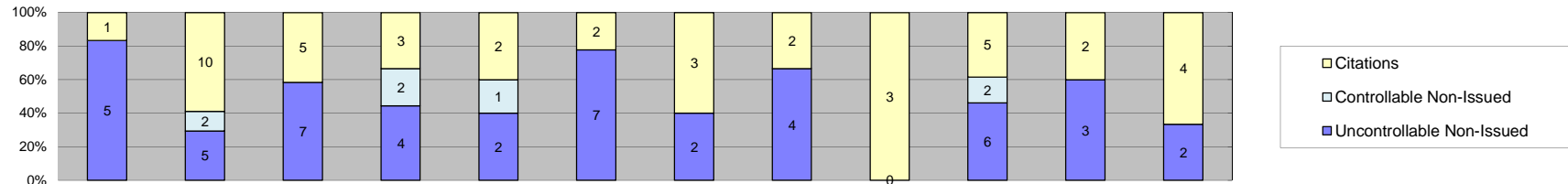
Events	Jan-12	Feb-12	Mar-12	Apr-12	May-12	Jun-12	Jul-12	Aug-12	Sep-12	Oct-12	Nov-12	Dec-12	Year to Date Monthly Average		2011 Monthly Average	
													Quantity	%	Quantity	%
Non-Violations	230	472	417	375	405	316	220	223	518	464	180	125	329	98%	0	0%
Violations	4	6	11	19	9	1	3	3	16	7	13	6	8	2%	0	0%
Total:	234	478	428	394	414	317	223	226	534	471	193	131	337	100%	0	0%
Violations																
Uncontrollable Non-Issued	3	4	7	5	1	0	2	3	6	5	10	4	5	39%	0	0%
Controllable Non-Issued	0	1	3	12	6	0	0	0	3	0	0	0	5	43%	0	0%
Citations	1	1	1	2	2	1	1	0	7	2	3	2	2	18%	0	0%
Total:	4	6	11	19	9	1	3	3	16	7	13	6	12	82%	0	0%
Non-Violations																
Rear Axle Violation	15	32	14	36	0	0	0	1	1	2	0	0	14	4%	0	0%
Emergency Vehicle	1	3	2	1	0	0	0	1	1	1	1	0	1	0%	0	0%
Right Turn	0	0	0	0	0	0	0	0	0	0	0	0	0	0%	0	0%
No Violation Occurred	214	437	401	338	405	316	220	221	516	461	179	125	319	95%	0	0%
Total:	230	472	417	375	405	316	220	223	518	464	180	125	335	100%	0	0%
Uncontrollable Non-Issued Violations																
No Plate	0	0	0	0	0	0	0	0	2	1	0	0	2	10%	0	0%
Out of State Plate	0	0	0	0	0	0	0	0	1	1	0	0	1	7%	0	0%
Glare on Plate	0	0	0	0	0	0	0	0	0	0	0	0	0	0%	0	0%
Illegible Plate	0	0	0	0	0	0	0	0	0	0	0	0	0	0%	0	0%
Plate Obstructed	1	1	0	1	0	0	0	0	0	0	1	0	1	7%	0	0%
Windshield Glare	0	0	0	0	0	0	0	1	0	0	0	0	1	7%	0	0%
Driver Obstructed	1	3	6	3	0	0	1	1	1	3	1	0	2	15%	0	0%
Car Obstructed	0	0	0	0	1	0	0	0	0	0	2	0	2	10%	0	0%
No DMV Match Found	1	0	0	0	0	0	0	0	0	0	0	0	1	7%	0	0%
LASD Expired	0	0	0	0	0	0	0	0	0	0	0	2	2	14%	0	0%
LASD Return	0	0	1	1	0	0	1	1	2	0	5	0	2	13%	0	0%
Other	0	0	0	0	0	0	0	0	0	0	1	2	2	10%	0	0%
Total:	3	4	7	5	1	0	2	3	6	5	10	4	15	100%	0	0%
Controllable Non-Issued Violations																
Framing of Plate	0	0	0	0	0	0	0	0	0	0	0	0	0	0%	0	0%
Focus / Clarity of Plate	0	0	0	1	0	0	0	0	0	0	0	0	1	6%	0	0%
Dark Interior	0	0	1	0	0	0	0	0	0	0	0	0	1	6%	0	0%
Framing of Driver	0	0	2	1	0	0	0	0	0	0	0	0	2	8%	0	0%
Focus / Clarity of Driver	0	0	0	0	0	0	0	0	0	0	0	0	0	0%	0	0%
Framing of Car	0	0	0	1	0	0	0	0	3	0	0	0	2	11%	0	0%
Data/Operator Error	0	0	0	9	0	0	0	0	0	0	0	0	9	50%	0	0%
Exposure	0	0	0	0	0	0	0	0	0	0	0	0	0	0%	0	0%
Equipment Malfunction	0	1	0	0	6	0	0	0	0	0	0	0	4	19%	0	0%
ACS Expired	0	0	0	0	0	0	0	0	0	0	0	0	0	0%	0	0%
Total:	0	1	3	12	6	0	0	0	3	0	0	0	18	100%	0	0%
Summary Metrics																
Daily Average Vehicle Passes	122	228	210	238	299	241	270	264	255	282	266	267	Year to Date Monthly Average		2011 Monthly Average	
Average Issued Speed	17	16	16	18	18	17	17	0	18	19	17	17	245		0	
Average Issued Red Seconds	70.9	258.1	23.3	350.3	0.2	354.2	0.9	0	198.9	594.0	104.9	636.1	235.6		0.0	
Citation / Violation Issuance Rate	25%	17%	9%	11%	22%	100%	33%	0%	44%	29%	23%	33%	31%		0%	
Controllable Issuance Rate	100%	50%	25%	14%	25%	100%	100%	0%	70%	100%	100%	100%	71%		0%	



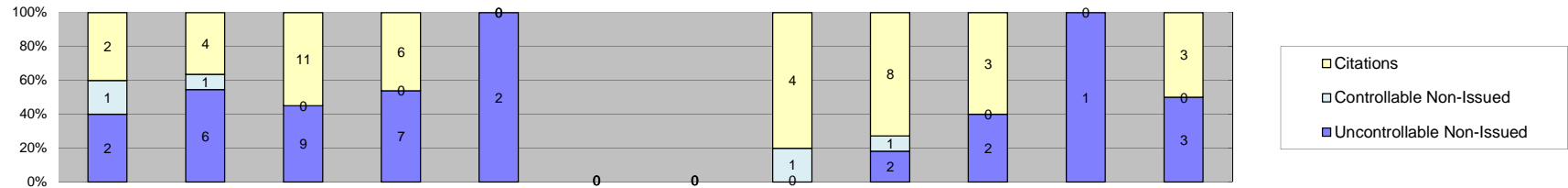
Los Angeles County MTA Expo Line Approach Summary Report Location 5048: SB to EB Flower at 28th



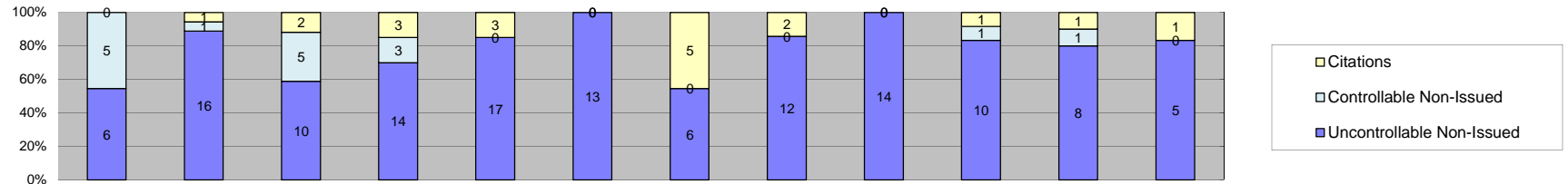
Events	Jan-12	Feb-12	Mar-12	Apr-12	May-12	Jun-12	Jul-12	Aug-12	Sep-12	Oct-12	Nov-12	Dec-12	Year to Date Monthly Average		2011 Monthly Average	
													Quantity	%	Quantity	%
Non-Violations	8	10	13	11	19	10	12	31	20	22	15	7	15	31%	0	0%
Violations	32	32	48	25	38	35	37	46	34	34	30	9	33	69%	0	0%
Total:	40	42	61	36	57	45	49	77	54	56	45	16	48	100%	0	0%
Violations																
Uncontrollable Non-Issued	14	24	37	19	31	29	29	29	19	14	15	5	22	66%	0	0%
Controllable Non-Issued	14	4	7	3	3	2	1	5	3	11	11	2	6	17%	0	0%
Citations	4	4	4	3	4	4	7	12	12	9	4	2	6	17%	0	0%
Total:	32	32	48	25	38	35	37	46	34	34	30	9	33	83%	0	0%
Non-Violations																
Rear Axle Violation	0	0	0	1	0	2	6	9	1	2	3	1	3	19%	0	0%
Emergency Vehicle	1	3	1	1	0	1	0	7	5	3	0	0	3	16%	0	0%
Right Turn	0	0	0	0	0	0	0	0	0	0	0	0	0	0%	0	0%
No Violation Occurred	7	7	12	9	19	7	6	15	14	17	12	6	11	65%	0	0%
Total:	8	10	13	11	19	10	12	31	20	22	15	7	17	100%	0	0%
Uncontrollable Non-Issued Violations																
No Plate	3	6	6	3	5	7	4	5	5	4	7	0	5	17%	0	0%
Out of State Plate	1	0	0	1	1	0	0	2	1	0	0	0	1	4%	0	0%
Glare on Plate	0	0	1	0	0	0	0	0	0	0	0	0	1	3%	0	0%
Illegible Plate	0	1	1	0	0	1	1	0	0	1	0	0	1	3%	0	0%
Plate Obstructed	0	0	0	0	0	0	0	0	0	0	0	0	0	0%	0	0%
Windshield Glare	0	5	2	3	5	9	7	5	6	2	1	0	5	16%	0	0%
Driver Obstructed	5	4	10	4	8	4	11	6	3	6	6	1	6	20%	0	0%
Car Obstructed	0	0	0	0	2	2	0	3	1	0	0	0	2	7%	0	0%
No DMV Match Found	1	2	3	2	1	1	1	2	0	0	0	0	2	6%	0	0%
LASD Expired	0	0	0	2	1	0	0	0	0	0	0	0	2	5%	0	0%
LASD Return	4	6	14	4	8	5	5	6	3	1	1	4	5	18%	0	0%
Other	0	0	0	0	0	0	0	0	0	0	0	0	0	0%	0	0%
Total:	14	24	37	19	31	29	29	29	19	14	15	5	29	100%	0	0%
Controllable Non-Issued Violations																
Framing of Plate	0	0	0	0	0	0	0	0	0	0	0	0	0	0%	0	0%
Focus / Clarity of Plate	0	0	0	0	0	0	0	0	0	0	0	0	0	0%	0	0%
Dark Interior	13	4	6	2	3	0	1	5	2	2	8	2	4	53%	0	0%
Framing of Driver	0	0	0	0	0	0	0	0	0	0	0	0	0	0%	0	0%
Focus / Clarity of Driver	0	0	0	0	0	0	0	0	0	0	0	0	0	0%	0	0%
Framing of Car	0	0	0	1	0	0	0	0	0	0	0	0	1	12%	0	0%
Data/Operator Error	0	0	0	0	0	0	0	0	0	0	0	0	0	0%	0	0%
Exposure	1	0	1	0	0	2	0	0	1	9	3	0	3	35%	0	0%
Equipment Malfunction	0	0	0	0	0	0	0	0	0	0	0	0	0	0%	0	0%
ACS Expired	0	0	0	0	0	0	0	0	0	0	0	0	0	0%	0	0%
Total:	14	4	7	3	3	2	1	5	3	11	11	2	8	100%	0	0%
Summary Metrics																
Daily Average Vehicle Passes	3,072	3,860	4,595	3,982	4,796	3,517	4,160	4,254	4,213	4,034	418	384	Year to Date Monthly Average		2011 Monthly Average	
Average Issued Speed	30	29	34	34	29	33	35	31	32	32	36	34	3,440		0	
Average Issued Red Seconds	1.5	0.8	0.4	0.8	0.6	0.6	0.8	1.0	0.6	0.5	0.7	0.4	0.7		0.0	
Citation / Violation Issuance Rate	13%	13%	8%	12%	11%	11%	19%	26%	35%	26%	13%	22%	17%		0%	
Controllable Issuance Rate	22%	50%	36%	50%	57%	67%	88%	71%	80%	45%	27%	50%	54%		0%	



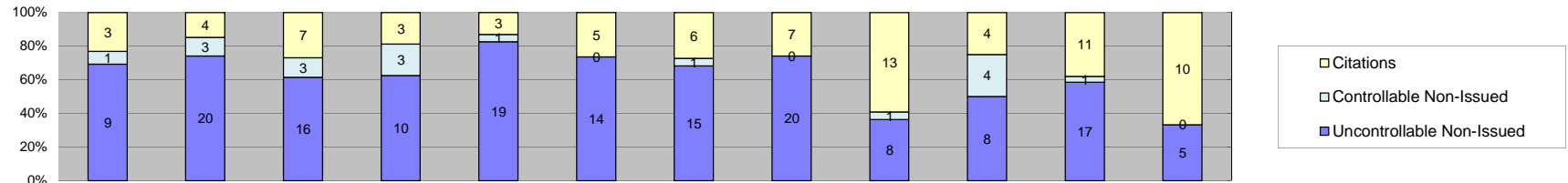
Events	2012												Year to Date Monthly Average		2011 Monthly Average	
	Jan-12	Feb-12	Mar-12	Apr-12	May-12	Jun-12	Jul-12	Aug-12	Sep-12	Oct-12	Nov-12	Dec-12	Quantity	%	Quantity	%
Events	131	156	168	106	105	120	123	182	113	141	125	94	130	94%	0	0%
Non-Violations	6	17	12	9	5	9	5	6	3	13	5	6	8	6%	0	0%
Total:	137	173	180	115	110	129	128	188	116	154	130	100	138	100%	0	0%
Violations																
Uncontrollable Non-Issued	5	5	7	4	2	7	2	4	0	6	3	2	4	45%	0	0%
Controllable Non-Issued	0	2	0	2	1	0	0	0	0	2	0	0	2	18%	0	0%
Citations	1	10	5	3	2	2	3	2	3	5	2	4	4	37%	0	0%
Total:	6	17	12	9	5	9	5	6	3	13	5	6	10	63%	0	0%
Non-Violations																
Rear Axle Violation	0	1	0	1	0	0	0	0	0	0	0	0	1	1%	0	0%
Emergency Vehicle	0	1	1	1	2	1	0	0	1	0	0	0	1	1%	0	0%
Right Turn	0	0	0	0	0	0	0	0	0	0	0	0	0	0%	0	0%
No Violation Occurred	131	154	167	104	103	119	123	182	112	141	125	94	130	98%	0	0%
Total:	131	156	168	106	105	120	123	182	113	141	125	94	132	100%	0	0%
Uncontrollable Non-Issued Violations																
No Plate	0	1	1	0	0	1	1	0	0	1	2	0	1	11%	0	0%
Out of State Plate	0	0	0	0	0	0	0	0	0	1	0	0	1	9%	0	0%
Glare on Plate	0	0	0	0	0	0	0	0	0	0	0	0	0	0%	0	0%
Illegible Plate	0	0	0	0	0	0	0	0	0	0	0	0	0	0%	0	0%
Plate Obstructed	1	0	0	0	0	0	0	0	0	0	0	0	1	9%	0	0%
Windshield Glare	0	0	1	1	0	1	0	0	0	2	0	0	1	12%	0	0%
Driver Obstructed	1	1	0	0	0	0	0	0	0	1	0	0	1	9%	0	0%
Car Obstructed	1	0	2	0	1	1	0	1	0	0	0	0	1	11%	0	0%
No DMV Match Found	1	2	1	0	0	2	0	3	0	0	0	0	2	17%	0	0%
LASD Expired	0	0	0	0	0	1	0	0	0	0	0	1	1	9%	0	0%
LASD Return	1	1	2	3	1	1	1	0	0	1	1	1	1	12%	0	0%
Other	0	0	0	0	0	0	0	0	0	0	0	0	0	0%	0	0%
Total:	5	5	7	4	2	7	2	4	0	6	3	2	11	100%	0	0%
Controllable Non-Issued Violations																
Framing of Plate	0	0	0	0	0	0	0	0	0	0	0	0	0	0%	0	0%
Focus / Clarity of Plate	0	0	0	0	0	0	0	0	0	0	0	0	0	0%	0	0%
Dark Interior	0	1	0	0	0	0	0	0	0	1	0	0	1	20%	0	0%
Framing of Driver	0	0	0	0	0	0	0	0	0	0	0	0	0	0%	0	0%
Focus / Clarity of Driver	0	0	0	0	0	0	0	0	0	0	0	0	0	0%	0	0%
Framing of Car	0	1	0	0	0	0	0	0	0	0	0	0	1	20%	0	0%
Data/Operator Error	0	0	0	0	0	0	0	0	0	0	0	0	0	0%	0	0%
Exposure	0	0	0	0	1	0	0	0	0	1	0	0	1	20%	0	0%
Equipment Malfunction	0	0	0	2	0	0	0	0	0	0	0	0	2	40%	0	0%
ACS Expired	0	0	0	0	0	0	0	0	0	0	0	0	0	0%	0	0%
Total:	0	2	0	2	1	0	0	0	0	2	0	0	5	100%	0	0%
Summary Metrics																
Daily Average Vehicle Passes	175	178	204	170	197	134	294	218	208	189	204	200	Year to Date Monthly Average		2011 Monthly Average	
Average Issued Speed	16	19	19	17	20	22	17	18	19	20	25	19	198	0		
Average Issued Red Seconds	99.9	85.4	69.5	99.9	71.5	66.6	83.4	99.9	80.4	79.7	99.9	83.5	85.0	0.0		
Citation / Violation Issuance Rate	17%	59%	42%	33%	40%	22%	60%	33%	100%	38%	40%	67%	46%	0%		
Controllable Issuance Rate	100%	83%	100%	60%	67%	100%	100%	100%	100%	71%	100%	100%	90%	0%		



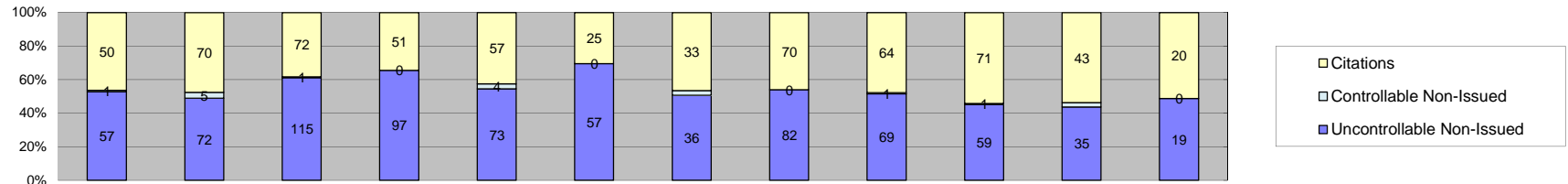
Events	2012												Year to Date Monthly Average		2011 Monthly Average	
	Jan-12	Feb-12	Mar-12	Apr-12	May-12	Jun-12	Jul-12	Aug-12	Sep-12	Oct-12	Nov-12	Dec-12	Quantity	%	Quantity	%
Events	42	114	131	93	38	26	25	72	71	89	76	74	71	90%	0	0%
Non-Violations	5	11	20	13	2	0	0	5	11	5	1	6	8	10%	0	0%
Total:	47	125	151	106	40	26	25	77	82	94	77	80	79	100%	0	0%
Violations																
Uncontrollable Non-Issued	2	6	9	7	2	0	0	0	2	2	1	3	4	38%	0	0%
Controllable Non-Issued	1	1	0	0	0	0	0	1	1	0	0	0	1	10%	0	0%
Citations	2	4	11	6	0	0	0	4	8	3	0	3	5	52%	0	0%
Total:	5	11	20	13	2	0	0	5	11	5	1	6	10	48%	0	0%
Non-Violations																
Rear Axle Violation	0	0	0	0	0	0	0	0	0	0	0	0	0	0%	0	0%
Emergency Vehicle	0	1	1	1	0	1	0	1	0	0	0	2	1	2%	0	0%
Right Turn	0	0	0	0	0	0	0	0	0	0	0	0	0	0%	0	0%
No Violation Occurred	42	113	130	92	38	25	25	71	71	89	76	72	70	98%	0	0%
Total:	42	114	131	93	38	26	25	72	71	89	76	74	72	100%	0	0%
Uncontrollable Non-Issued Violations																
No Plate	0	1	2	0	0	0	0	0	0	2	1	0	2	12%	0	0%
Out of State Plate	0	0	0	1	0	0	0	0	0	0	0	1	1	8%	0	0%
Glare on Plate	0	0	0	0	0	0	0	0	0	0	0	0	0	0%	0	0%
Illegible Plate	0	0	0	0	0	0	0	0	0	0	0	0	0	0%	0	0%
Plate Obstructed	0	0	0	0	0	0	0	0	0	0	0	0	0	0%	0	0%
Windshield Glare	0	0	1	1	0	0	0	0	0	0	0	1	1	8%	0	0%
Driver Obstructed	0	0	0	1	0	0	0	0	0	0	0	0	1	8%	0	0%
Car Obstructed	0	1	2	1	2	0	0	0	0	0	0	0	2	12%	0	0%
No DMV Match Found	2	4	1	1	0	0	0	0	2	0	0	0	2	16%	0	0%
LASD Expired	0	0	0	2	0	0	0	0	0	0	0	1	2	12%	0	0%
LASD Return	0	0	3	0	0	0	0	0	0	0	0	0	3	24%	0	0%
Other	0	0	0	0	0	0	0	0	0	0	0	0	0	0%	0	0%
Total:	2	6	9	7	2	0	0	0	2	2	1	3	13	100%	0	0%
Controllable Non-Issued Violations																
Framing of Plate	0	0	0	0	0	0	0	0	0	0	0	0	0	0%	0	0%
Focus / Clarity of Plate	0	0	0	0	0	0	0	0	0	0	0	0	0	0%	0	0%
Dark Interior	0	0	0	0	0	0	0	0	0	0	0	0	0	0%	0	0%
Framing of Driver	0	0	0	0	0	0	0	0	0	0	0	0	0	0%	0	0%
Focus / Clarity of Driver	0	0	0	0	0	0	0	0	0	0	0	0	0	0%	0	0%
Framing of Car	0	0	0	0	0	0	0	0	0	0	0	0	0	0%	0	0%
Data/Operator Error	0	0	0	0	0	0	0	0	0	0	0	0	0	0%	0	0%
Exposure	1	0	0	0	0	0	0	1	1	0	0	0	1	50%	0	0%
Equipment Malfunction	0	1	0	0	0	0	0	0	0	0	0	0	1	50%	0	0%
ACS Expired	0	0	0	0	0	0	0	0	0	0	0	0	0	0%	0	0%
Total:	1	1	0	0	0	0	0	1	1	0	0	0	2	100%	0	0%
Summary Metrics																
Daily Average Vehicle Passes	572	695	890	738	330	88	98	718	813	6,889	7,355	662	Year to Date Monthly Average		2011 Monthly Average	
Average Issued Speed	23	16	19	21	0	0	0	22	23	16	0	23	1,654		0	
Average Issued Red Seconds	40.8	46.6	36.9	66.9	0	0	0	25.5	20.2	48.9	0	33.5	39.9		0.0	
Citation / Violation Issuance Rate	40%	36%	55%	46%	0%	0%	0%	80%	73%	60%	0%	50%	55%		0%	
Controllable Issuance Rate	67%	80%	100%	100%	0%	0%	0%	80%	89%	100%	0%	100%	89%		0%	



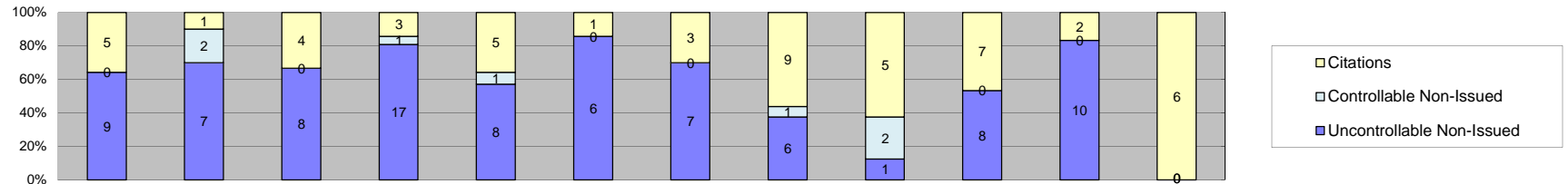
Events	Jan-12	Feb-12	Mar-12	Apr-12	May-12	Jun-12	Jul-12	Aug-12	Sep-12	Oct-12	Nov-12	Dec-12	Year to Date Monthly Average		2011 Monthly Average	
													Quantity	%	Quantity	%
Non-Violations	116	120	107	116	85	70	95	114	115	114	92	90	103	88%	0	0%
Violations	11	18	17	20	20	13	11	14	14	12	10	6	14	12%	0	0%
Total:	127	138	124	136	105	83	106	128	129	126	102	96	117	100%	0	0%
Violations																
Uncontrollable Non-Issued	6	16	10	14	17	13	6	12	14	10	8	5	11	70%	0	0%
Controllable Non-Issued	5	1	5	3	0	0	0	0	0	1	1	0	3	17%	0	0%
Citations	0	1	2	3	3	0	5	2	0	1	1	1	2	13%	0	0%
Total:	11	18	17	20	20	13	11	14	14	12	10	6	16	87%	0	0%
Non-Violations																
Rear Axle Violation	1	0	0	0	0	0	0	0	0	0	0	0	1	1%	0	0%
Emergency Vehicle	2	2	0	0	0	0	3	4	0	1	0	1	2	2%	0	0%
Right Turn	0	0	0	0	0	0	0	0	0	0	0	0	0	0%	0	0%
No Violation Occurred	113	118	107	116	85	70	92	110	115	113	92	89	102	97%	0	0%
Total:	116	120	107	116	85	70	95	114	115	114	92	90	105	100%	0	0%
Uncontrollable Non-Issued Violations																
No Plate	2	0	2	5	1	0	0	1	1	1	2	0	2	10%	0	0%
Out of State Plate	0	0	0	0	0	1	1	0	0	0	0	1	1	5%	0	0%
Glare on Plate	0	1	1	0	3	1	0	1	3	2	0	0	2	9%	0	0%
Illegible Plate	0	4	4	3	7	7	2	9	5	4	3	3	5	25%	0	0%
Plate Obstructed	0	0	0	0	0	0	0	0	0	0	0	0	0	0%	0	0%
Windshield Glare	0	3	0	1	4	2	3	0	0	1	2	1	2	12%	0	0%
Driver Obstructed	1	2	1	2	0	1	0	0	4	1	1	0	2	9%	0	0%
Car Obstructed	1	2	0	2	0	0	0	0	0	0	0	0	2	9%	0	0%
No DMV Match Found	0	2	1	0	1	0	0	0	0	0	0	0	1	7%	0	0%
LASD Expired	0	0	0	1	1	0	0	0	0	0	0	0	1	5%	0	0%
LASD Return	2	2	1	0	0	1	0	1	1	1	0	0	1	7%	0	0%
Other	0	0	0	0	0	0	0	0	0	0	0	0	0	0%	0	0%
Total:	6	16	10	14	17	13	6	12	14	10	8	5	18	100%	0	0%
Controllable Non-Issued Violations																
Framing of Plate	0	0	0	0	0	0	0	0	0	0	0	0	0	0%	0	0%
Focus / Clarity of Plate	0	0	0	0	0	0	0	0	0	0	0	0	0	0%	0	0%
Dark Interior	1	0	0	1	0	0	0	0	0	0	1	0	1	18%	0	0%
Framing of Driver	0	0	0	0	0	0	0	0	0	0	0	0	0	0%	0	0%
Focus / Clarity of Driver	0	0	0	0	0	0	0	0	0	0	0	0	0	0%	0	0%
Framing of Car	1	0	0	0	0	0	0	0	0	0	0	0	1	18%	0	0%
Data/Operator Error	0	0	0	0	0	0	0	0	0	0	0	0	0	0%	0	0%
Exposure	0	1	4	1	0	0	0	0	0	1	0	0	2	32%	0	0%
Equipment Malfunction	3	0	1	1	0	0	0	0	0	0	0	0	2	31%	0	0%
ACS Expired	0	0	0	0	0	0	0	0	0	0	0	0	0	0%	0	0%
Total:	5	1	5	3	0	0	0	0	0	1	1	0	5	100%	0	0%
Summary Metrics																
Daily Average Vehicle Passes	189	195	289	236	185	106	200	195	221	208	228	217	Year to Date Monthly Average		206	
Average Issued Speed	0	18	17	19	18	0	20	22	0	27	17	22	Year to Date Monthly Average		20	
Average Issued Red Seconds	0	99.9	99.9	74.6	66.9	0	99.9	99.9	0	0.3	99.9	99.9	Year to Date Monthly Average		82.4	
Citation / Violation Issuance Rate	0%	6%	12%	15%	15%	0%	45%	14%	0%	8%	10%	17%	Year to Date Monthly Average		16%	
Controllable Issuance Rate	0%	50%	29%	50%	100%	0%	100%	100%	0%	50%	50%	100%	Year to Date Monthly Average		70%	



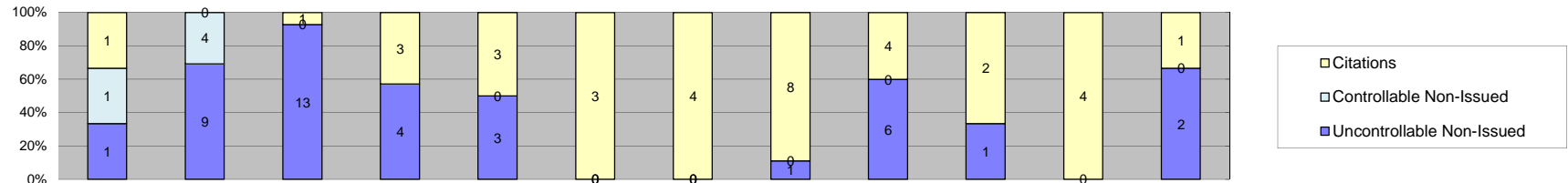
Events	2012												Year to Date Monthly Average		2011 Monthly Average	
	Jan-12	Feb-12	Mar-12	Apr-12	May-12	Jun-12	Jul-12	Aug-12	Sep-12	Oct-12	Nov-12	Dec-12	Quantity	%	Quantity	%
Non-Violations	73	124	155	111	111	73	110	108	83	128	93	86	105	83%	0	0%
Violations	13	27	26	16	23	19	22	27	22	16	29	15	21	17%	0	0%
Total:	86	151	181	127	134	92	132	135	105	144	122	101	126	100%	0	0%
Violations																
Uncontrollable Non-Issued	9	20	16	10	19	14	15	20	8	8	17	5	13	62%	0	0%
Controllable Non-Issued	1	3	3	3	1	0	1	0	1	4	1	0	2	9%	0	0%
Citations	3	4	7	3	3	5	6	7	13	4	11	10	6	29%	0	0%
Total:	13	27	26	16	23	19	22	27	22	16	29	15	22	71%	0	0%
Non-Violations																
Rear Axle Violation	0	0	0	0	0	0	0	0	0	0	0	0	0	0%	0	0%
Emergency Vehicle	0	3	3	0	0	0	1	4	1	1	2	0	2	2%	0	0%
Right Turn	0	0	0	0	0	0	0	0	0	0	0	0	0	0%	0	0%
No Violation Occurred	73	121	152	111	111	73	109	104	82	127	91	86	103	98%	0	0%
Total:	73	124	155	111	111	73	110	108	83	128	93	86	105	100%	0	0%
Uncontrollable Non-Issued Violations																
No Plate	2	1	2	0	2	0	0	8	2	3	3	0	3	12%	0	0%
Out of State Plate	0	1	0	0	0	0	2	0	0	0	0	0	2	7%	0	0%
Glare on Plate	0	0	0	1	1	0	0	0	0	0	0	0	1	4%	0	0%
Illegible Plate	3	9	9	4	5	5	2	4	3	2	5	3	5	20%	0	0%
Plate Obstructed	0	1	0	0	1	0	1	2	0	2	1	0	1	6%	0	0%
Windshield Glare	0	2	0	0	2	3	3	2	0	1	2	0	2	9%	0	0%
Driver Obstructed	0	2	0	1	1	0	2	0	1	0	1	0	1	6%	0	0%
Car Obstructed	2	1	0	1	1	0	1	0	0	0	1	0	1	5%	0	0%
No DMV Match Found	0	0	0	0	0	0	0	2	0	0	0	0	2	9%	0	0%
LASD Expired	0	0	0	0	0	3	0	0	0	0	0	1	2	9%	0	0%
LASD Return	2	3	5	3	6	3	4	2	2	0	4	1	3	14%	0	0%
Other	0	0	0	0	0	0	0	0	0	0	0	0	0	0%	0	0%
Total:	9	20	16	10	19	14	15	20	8	8	17	5	23	100%	0	0%
Controllable Non-Issued Violations																
Framing of Plate	1	0	0	1	0	0	0	0	0	0	0	0	1	14%	0	0%
Focus / Clarity of Plate	0	0	0	1	0	0	0	0	0	0	0	0	1	14%	0	0%
Dark Interior	0	2	3	1	1	0	1	0	0	0	1	0	2	21%	0	0%
Framing of Driver	0	0	0	0	0	0	0	0	0	0	0	0	0	0%	0	0%
Focus / Clarity of Driver	0	0	0	0	0	0	0	0	0	0	0	0	0	0%	0	0%
Framing of Car	0	0	0	0	0	0	0	0	0	0	0	0	0	0%	0	0%
Data/Operator Error	0	0	0	0	0	0	0	0	0	0	0	0	0	0%	0	0%
Exposure	0	0	0	0	0	0	0	0	1	4	0	0	3	36%	0	0%
Equipment Malfunction	0	1	0	0	0	0	0	0	0	0	0	0	1	14%	0	0%
ACS Expired	0	0	0	0	0	0	0	0	0	0	0	0	0	0%	0	0%
Total:	1	3	3	3	1	0	1	0	1	4	1	0	7	100%	0	0%
Summary Metrics																
Daily Average Vehicle Passes	458	405	543	574	626	402	648	574	491	487	507	467	Year to Date Monthly Average		2011 Monthly Average	
Average Issued Speed	16	17	17	16	15	18	16	17	18	16	17	17	515		0	
Average Issued Red Seconds	18.7	13.4	34.6	1.4	12.5	9.5	12.4	33.0	21.4	18.8	13.0	0.5	15.8		0.0	
Citation / Violation Issuance Rate	23%	15%	27%	19%	13%	26%	27%	26%	59%	25%	38%	67%	30%		0%	
Controllable Issuance Rate	75%	57%	70%	50%	75%	100%	86%	100%	93%	50%	92%	100%	79%		0%	



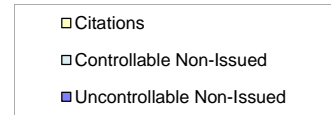
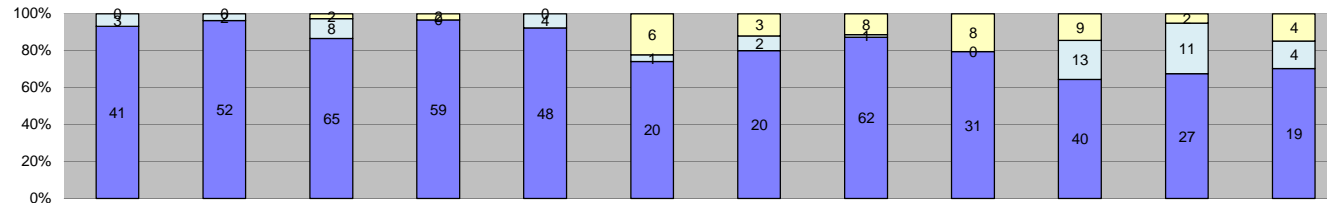
Events	2012												Year to Date Monthly Average		2011 Monthly Average	
	Jan-12	Feb-12	Mar-12	Apr-12	May-12	Jun-12	Jul-12	Aug-12	Sep-12	Oct-12	Nov-12	Dec-12	Quantity	%	Quantity	%
Non-Violations	166	226	235	278	272	247	284	278	297	348	256	202	257	69%	0	0%
Violations	108	147	188	148	134	82	71	152	134	131	80	39	118	31%	0	0%
Total:	274	373	423	426	406	329	355	430	431	479	336	241	375	100%	0	0%
Violations																
Uncontrollable Non-Issued	57	72	115	97	73	57	36	82	69	59	35	19	64	54%	0	0%
Controllable Non-Issued	1	5	1	0	4	0	2	0	1	1	2	0	2	2%	0	0%
Citations	50	70	72	51	57	25	33	70	64	71	43	20	52	44%	0	0%
Total:	108	147	188	148	134	82	71	152	134	131	80	39	119	56%	0	0%
Non-Violations																
Rear Axle Violation	0	0	0	0	0	0	0	0	0	0	0	0	0	0%	0	0%
Emergency Vehicle	3	5	6	9	3	3	2	7	4	4	4	3	4	2%	0	0%
Right Turn	0	0	0	0	0	0	0	0	0	0	0	0	0	0%	0	0%
No Violation Occurred	163	221	229	269	269	244	282	271	293	344	252	199	253	98%	0	0%
Total:	166	226	235	278	272	247	284	278	297	348	256	202	257	100%	0	0%
Uncontrollable Non-Issued Violations																
No Plate	9	7	20	5	7	7	5	11	17	13	9	2	9	13%	0	0%
Out of State Plate	0	1	4	0	0	1	1	1	2	0	0	0	2	2%	0	0%
Glare on Plate	1	2	1	1	11	1	0	1	3	1	1	0	2	3%	0	0%
Illegible Plate	4	5	12	4	7	4	3	11	10	9	2	3	6	8%	0	0%
Plate Obstructed	2	6	1	6	1	1	1	2	0	0	1	0	2	3%	0	0%
Windshield Glare	4	11	12	22	9	11	9	14	5	9	5	1	9	13%	0	0%
Driver Obstructed	2	1	0	2	1	0	1	1	2	0	2	1	1	2%	0	0%
Car Obstructed	1	4	3	8	4	3	0	2	2	1	0	0	3	4%	0	0%
No DMV Match Found	15	17	23	21	5	10	9	22	4	0	0	0	14	19%	0	0%
LASD Expired	0	2	0	15	2	6	0	0	1	0	0	2	5	6%	0	0%
LASD Return	19	16	39	13	26	13	7	17	23	26	15	10	19	26%	0	0%
Other	0	0	0	0	0	0	0	0	0	0	0	0	0	0%	0	0%
Total:	57	72	115	97	73	57	36	82	69	59	35	19	73	100%	0	0%
Controllable Non-Issued Violations																
Framing of Plate	0	0	0	0	0	0	0	0	0	0	0	0	0	0%	0	0%
Focus / Clarity of Plate	0	0	0	0	2	0	0	0	1	0	0	0	2	16%	0	0%
Dark Interior	0	1	0	0	0	0	0	0	0	0	1	0	1	11%	0	0%
Framing of Driver	0	0	0	0	0	0	0	0	0	0	0	0	0	0%	0	0%
Focus / Clarity of Driver	0	0	0	0	0	0	0	0	0	0	0	0	0	0%	0	0%
Framing of Car	1	0	1	0	0	0	0	0	1	0	0	0	1	11%	0	0%
Data/Operator Error	0	0	0	0	0	0	0	0	0	0	0	0	0	0%	0	0%
Exposure	0	0	0	0	2	0	2	0	0	0	1	0	2	18%	0	0%
Equipment Malfunction	0	4	0	0	0	0	0	0	0	0	0	0	4	44%	0	0%
ACS Expired	0	0	0	0	0	0	0	0	0	0	0	0	0	0%	0	0%
Total:	1	5	1	0	4	0	2	0	1	1	2	0	9	100%	0	0%
Summary Metrics																
Daily Average Vehicle Passes	1,274	1,274	1,540	1,455	1,636	1,288	1,405	1,405	2,147	1,400	1,874	1,710	Year to Date Monthly Average		2011 Monthly Average	
Average Issued Speed	20	19	20	19	20	22	21	20	19	20	20	21	1,534	0		
Average Issued Red Seconds	4.0	0.6	0.7	0.5	0.6	0.5	0.5	0.6	0.6	0.6	0.6	0.6	20	0		
Citation / Violation Issuance Rate	46%	48%	38%	34%	43%	30%	46%	46%	48%	54%	54%	51%	0.9	0.0		
Controllable Issuance Rate	98%	93%	99%	100%	93%	100%	94%	100%	98%	99%	96%	100%	45%	0%		
													98%	0%		



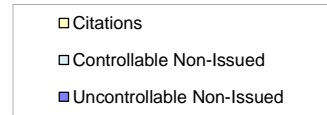
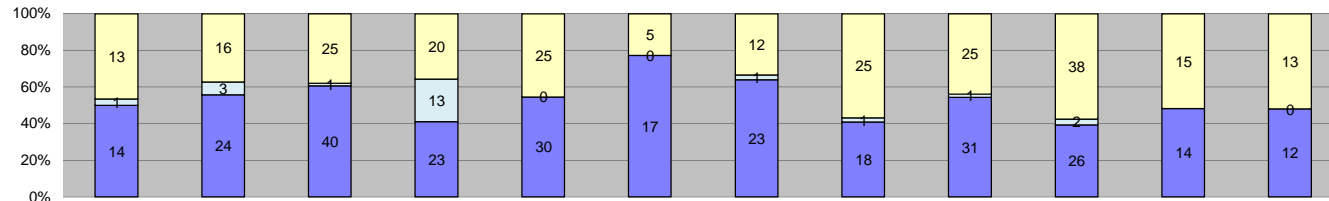
Events	Year to Date												Year to Date Monthly Average		2011 Monthly Average	
	Jan-12	Feb-12	Mar-12	Apr-12	May-12	Jun-12	Jul-12	Aug-12	Sep-12	Oct-12	Nov-12	Dec-12	Quantity	%	Quantity	%
Non-Violations	161	192	203	161	137	113	109	99	100	125	133	132	139	92%	0	0%
Violations	14	10	12	21	14	7	10	16	8	15	12	6	12	8%	0	0%
Total:	175	202	215	182	151	120	119	115	108	140	145	138	151	100%	0	0%
Violations																
Uncontrollable Non-Issued	9	7	8	17	8	6	7	6	1	8	10	0	8	58%	0	0%
Controllable Non-Issued	0	2	0	1	1	0	0	1	2	0	0	0	1	10%	0	0%
Citations	5	1	4	3	5	1	3	9	5	7	2	6	4	31%	0	0%
Total:	14	10	12	21	14	7	10	16	8	15	12	6	14	69%	0	0%
Non-Violations																
Rear Axle Violation	0	1	0	0	1	0	0	0	0	1	1	0	1	1%	0	0%
Emergency Vehicle	2	6	7	3	5	4	2	6	5	4	2	1	4	3%	0	0%
Right Turn	0	0	0	0	0	0	0	0	0	0	0	0	0	0%	0	0%
No Violation Occurred	159	185	196	158	131	109	107	93	95	120	130	131	135	96%	0	0%
Total:	161	192	203	161	137	113	109	99	100	125	133	132	139	100%	0	0%
Uncontrollable Non-Issued Violations																
No Plate	3	1	1	2	1	1	1	1	1	1	2	0	1	7%	0	0%
Out of State Plate	0	1	0	0	0	0	0	0	0	1	1	0	1	5%	0	0%
Glare on Plate	0	1	1	1	3	0	2	1	0	1	2	0	2	8%	0	0%
Illegible Plate	0	0	0	3	0	1	1	3	0	2	4	0	2	12%	0	0%
Plate Obstructed	0	0	0	0	0	0	0	0	0	2	0	0	2	10%	0	0%
Windshield Glare	0	0	0	0	0	1	2	0	0	1	0	0	1	7%	0	0%
Driver Obstructed	2	0	0	0	1	1	1	1	0	0	0	0	1	6%	0	0%
Car Obstructed	4	1	2	3	1	1	0	0	0	1	0	0	2	9%	0	0%
No DMV Match Found	0	2	3	1	0	0	0	0	0	0	0	0	2	10%	0	0%
LASD Expired	0	0	0	7	1	0	0	0	0	0	0	0	4	20%	0	0%
LASD Return	0	1	1	0	1	1	0	0	0	0	0	0	1	5%	0	0%
Other	0	0	0	0	0	0	0	0	0	0	0	0	0	0%	0	0%
Total:	9	7	8	17	8	6	7	6	1	8	10	0	20	100%	0	0%
Controllable Non-Issued Violations																
Framing of Plate	0	0	0	0	0	0	0	0	0	0	0	0	0	0%	0	0%
Focus / Clarity of Plate	0	0	0	1	0	0	0	0	0	0	0	0	1	14%	0	0%
Dark Interior	0	0	0	0	0	0	0	1	0	0	0	0	1	14%	0	0%
Framing of Driver	0	0	0	0	0	0	0	0	0	0	0	0	0	0%	0	0%
Focus / Clarity of Driver	0	0	0	0	0	0	0	0	0	0	0	0	0	0%	0	0%
Framing of Car	0	0	0	0	1	0	0	0	0	0	0	0	1	14%	0	0%
Data/Operator Error	0	0	0	0	0	0	0	0	0	0	0	0	0	0%	0	0%
Exposure	0	0	0	0	0	0	0	0	2	0	0	0	2	29%	0	0%
Equipment Malfunction	0	2	0	0	0	0	0	0	0	0	0	0	2	29%	0	0%
ACS Expired	0	0	0	0	0	0	0	0	0	0	0	0	0	0%	0	0%
Total:	0	2	0	1	1	0	0	1	2	0	0	0	7	100%	0	0%
Summary Metrics																
Daily Average Vehicle Passes	1,012	1,049	1,216	1,209	1,217	935	1,187	1,041	1,143	1,160	1,110	1,042	Year to Date Monthly Average		2011 Monthly Average	
Average Issued Speed	23	26	19	22	21	21	19	23	21	20	19	19	1,110		0	
Average Issued Red Seconds	20.5	1.0	0.5	0.7	0.4	0.5	33.6	14.1	31.2	14.7	0.8	0.5	9.9		0.0	
Citation / Violation Issuance Rate	36%	10%	33%	14%	36%	14%	30%	56%	63%	47%	17%	100%	38%		0%	
Controllable Issuance Rate	100%	33%	100%	75%	83%	100%	100%	90%	71%	100%	100%	100%	88%		0%	



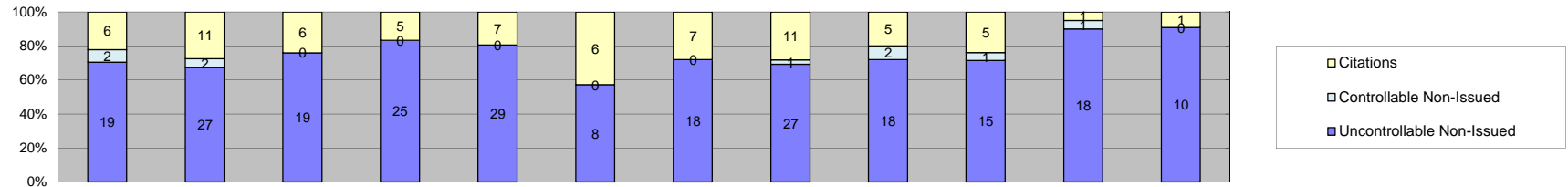
Events	Jan-12												Year to Date Monthly Average		2011 Monthly Average	
	Jan-12	Feb-12	Mar-12	Apr-12	May-12	Jun-12	Jul-12	Aug-12	Sep-12	Oct-12	Nov-12	Dec-12	Quantity	%	Quantity	%
Non-Violations	62	508	487	630	704	632	655	660	679	831	666	460	581	99%	0	0%
Violations	3	13	14	7	6	3	4	9	10	3	4	3	7	1%	0	0%
Total:	65	521	501	637	710	635	659	669	689	834	670	463	588	100%	0	0%
Violations																
Uncontrollable Non-Issued	1	9	13	4	3	0	0	1	6	1	0	2	4	44%	0	0%
Controllable Non-Issued	1	4	0	0	0	0	0	0	0	0	0	0	3	25%	0	0%
Citations	1	0	1	3	3	3	4	8	4	2	4	1	3	31%	0	0%
Total:	3	13	14	7	6	3	4	9	10	3	4	3	10	69%	0	0%
Non-Violations																
Rear Axle Violation	1	8	10	4	1	0	0	1	0	0	0	0	4	1%	0	0%
Emergency Vehicle	1	3	1	2	1	2	0	0	2	3	1	0	2	0%	0	0%
Right Turn	0	0	0	0	0	0	0	0	0	0	0	0	0	0%	0	0%
No Violation Occurred	60	497	476	624	702	630	655	659	677	828	665	460	578	99%	0	0%
Total:	62	508	487	630	704	632	655	660	679	831	666	460	584	100%	0	0%
Uncontrollable Non-Issued Violations																
No Plate	0	2	1	0	1	0	0	0	3	0	0	0	2	12%	0	0%
Out of State Plate	0	0	0	0	0	0	0	0	1	0	0	0	1	7%	0	0%
Glare on Plate	0	0	1	0	0	0	0	0	0	0	0	0	1	7%	0	0%
Illegible Plate	0	0	0	0	0	0	0	0	0	0	0	0	0	0%	0	0%
Plate Obstructed	0	0	2	0	0	0	0	0	0	0	0	0	2	13%	0	0%
Windshield Glare	0	0	1	0	0	0	0	0	0	0	0	0	1	7%	0	0%
Driver Obstructed	1	1	2	0	0	0	0	0	0	0	0	0	1	9%	0	0%
Car Obstructed	0	1	3	1	1	0	0	0	0	0	0	0	2	10%	0	0%
No DMV Match Found	0	2	2	2	0	0	0	1	0	0	0	0	2	12%	0	0%
LASD Expired	0	0	0	0	0	0	0	0	0	0	0	0	0	0%	0	0%
LASD Return	0	3	1	1	1	0	0	0	2	1	0	0	2	10%	0	0%
Other	0	0	0	0	0	0	0	0	0	0	0	2	2	13%	0	0%
Total:	1	9	13	4	3	0	0	1	6	1	0	2	15	100%	0	0%
Controllable Non-Issued Violations																
Framing of Plate	0	0	0	0	0	0	0	0	0	0	0	0	0	0%	0	0%
Focus / Clarity of Plate	0	0	0	0	0	0	0	0	0	0	0	0	0	0%	0	0%
Dark Interior	0	1	0	0	0	0	0	0	0	0	0	0	1	20%	0	0%
Framing of Driver	0	0	0	0	0	0	0	0	0	0	0	0	0	0%	0	0%
Focus / Clarity of Driver	0	0	0	0	0	0	0	0	0	0	0	0	0	0%	0	0%
Framing of Car	0	0	0	0	0	0	0	0	0	0	0	0	0	0%	0	0%
Data/Operator Error	1	0	0	0	0	0	0	0	0	0	0	0	1	20%	0	0%
Exposure	0	0	0	0	0	0	0	0	0	0	0	0	0	0%	0	0%
Equipment Malfunction	0	3	0	0	0	0	0	0	0	0	0	0	3	60%	0	0%
ACS Expired	0	0	0	0	0	0	0	0	0	0	0	0	0	0%	0	0%
Total:	1	4	0	0	0	0	0	0	0	0	0	0	5	100%	0	0%
Summary Metrics																
Daily Average Vehicle Passes	70	422	450	664	708	622	666	632	599	632	638	604	Year to Date Monthly Average		2011 Monthly Average	
Average Issued Speed	15	0	17	17	15	20	18	17	24	16	17	20	559		0	
Average Issued Red Seconds	425.7	0	0.9	357.1	682.8	0.5	495.5	278.4	778.3	512.1	584.1	84.8	381.8		0.0	
Citation / Violation Issuance Rate	33%	0%	7%	43%	50%	100%	100%	89%	40%	67%	100%	33%	60%		0%	
Controllable Issuance Rate	50%	0%	100%	100%	100%	100%	100%	100%	100%	100%	100%	100%	95%		0%	



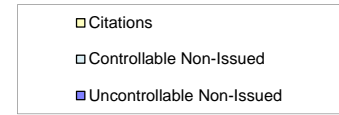
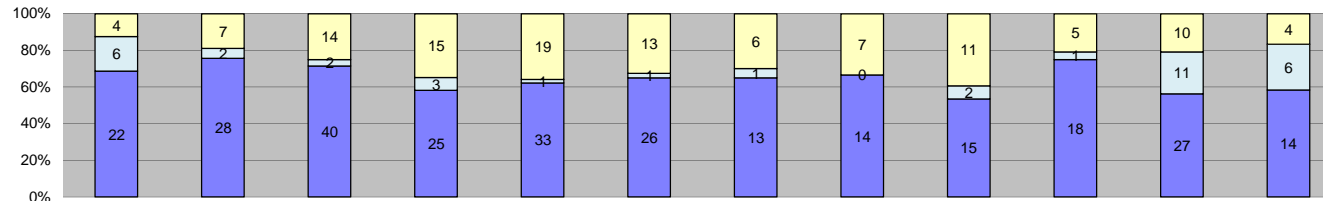
Events	Jan-12	Feb-12	Mar-12	Apr-12	May-12	Jun-12	Jul-12	Aug-12	Sep-12	Oct-12	Nov-12	Dec-12	Year to Date Monthly Average		2011 Monthly Average	
	Quantity	Quantity	Quantity	Quantity	Quantity	Quantity	Quantity	Quantity	Quantity	Quantity	Quantity	Quantity	Quantity	%	Quantity	%
Non-Violations	88	84	162	154	184	125	157	137	172	141	140	126	139	74%	0	0%
Violations	44	54	75	61	52	27	25	71	39	62	40	27	48	26%	0	0%
Total:	132	138	237	215	236	152	182	208	211	203	180	153	187	100%	0	0%
Violations																
Uncontrollable Non-Issued	41	52	65	59	48	20	20	62	31	40	27	19	40	80%	0	0%
Controllable Non-Issued	3	2	8	0	4	1	2	1	0	13	11	4	5	10%	0	0%
Citations	0	0	2	2	0	6	3	8	8	9	2	4	5	10%	0	0%
Total:	44	54	75	61	52	27	25	71	39	62	40	27	50	90%	0	0%
Non-Violations																
Rear Axle Violation	0	0	0	0	0	0	0	0	0	0	0	0	0	0%	0	0%
Emergency Vehicle	2	0	5	6	2	1	4	11	3	5	1	1	4	3%	0	0%
Right Turn	0	0	0	0	0	0	0	0	0	0	0	0	0	0%	0	0%
No Violation Occurred	86	84	157	148	182	124	153	126	169	136	139	125	136	97%	0	0%
Total:	88	84	162	154	184	125	157	137	172	141	140	126	139	100%	0	0%
Uncontrollable Non-Issued Violations																
No Plate	3	6	7	5	2	0	3	3	3	4	2	3	4	8%	0	0%
Out of State Plate	1	0	0	0	2	0	0	1	0	0	0	0	1	3%	0	0%
Glare on Plate	0	1	0	0	2	1	0	1	0	1	0	0	1	3%	0	0%
Illegible Plate	1	7	5	4	1	2	0	6	3	3	5	2	4	8%	0	0%
Plate Obstructed	1	2	2	1	3	0	1	5	2	1	0	0	2	4%	0	0%
Windshield Glare	6	6	9	2	12	6	6	14	9	11	12	10	9	19%	0	0%
Driver Obstructed	2	0	2	2	4	0	1	0	0	1	0	1	2	4%	0	0%
Car Obstructed	0	2	1	3	2	1	1	1	1	1	1	0	1	3%	0	0%
No DMV Match Found	5	5	7	11	3	2	1	7	0	0	0	0	5	11%	0	0%
LASD Expired	0	0	0	0	0	0	0	0	0	0	0	0	0	0%	0	0%
LASD Return	22	23	32	31	17	8	7	24	13	18	7	3	17	37%	0	0%
Other	0	0	0	0	0	0	0	0	0	0	0	0	0	0%	0	0%
Total:	41	52	65	59	48	20	20	62	31	40	27	19	46	100%	0	0%
Controllable Non-Issued Violations																
Framing of Plate	1	0	0	0	0	0	0	0	0	0	0	0	1	8%	0	0%
Focus / Clarity of Plate	0	0	0	0	3	0	0	0	0	0	0	0	3	24%	0	0%
Dark Interior	2	2	0	0	0	1	1	1	0	1	9	1	2	18%	0	0%
Framing of Driver	0	0	0	0	0	0	0	0	0	0	0	0	0	0%	0	0%
Focus / Clarity of Driver	0	0	0	0	0	0	0	0	0	0	0	0	0	0%	0	0%
Framing of Car	0	0	0	0	0	0	0	0	0	0	0	0	0	0%	0	0%
Data/Operator Error	0	0	0	0	0	0	0	0	0	0	0	0	0	0%	0	0%
Exposure	0	0	5	0	1	0	1	0	0	4	1	0	2	19%	0	0%
Equipment Malfunction	0	0	3	0	0	0	0	0	0	8	1	3	4	30%	0	0%
ACS Expired	0	0	0	0	0	0	0	0	0	0	0	0	0	0%	0	0%
Total:	3	2	8	0	4	1	2	1	0	13	11	4	12	100%	0	0%
Summary Metrics																
Daily Average Vehicle Passes	735	605	1,083	861	1,161	792	934	966	1,024	903	971	951	Year to Date Monthly Average		2011 Monthly Average	
Average Issued Speed	0	0	25	21	0	22	23	21	22	21	21	19	916		0	
Average Issued Red Seconds	0	0	50.4	0.3	0	17.1	0.5	10.7	0.7	0.5	0.6	0.5	9.0		0.0	
Citation / Violation Issuance Rate	0%	0%	3%	3%	0%	22%	12%	11%	21%	15%	5%	15%	12%		0%	
Controllable Issuance Rate	0%	0%	20%	100%	0%	86%	60%	89%	100%	41%	15%	50%	62%		0%	



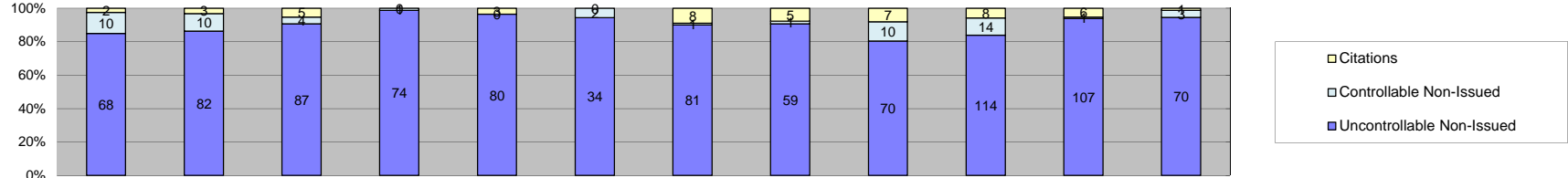
Events	Jan-12	Feb-12	Mar-12	Apr-12	May-12	Jun-12	Jul-12	Aug-12	Sep-12	Oct-12	Nov-12	Dec-12	Year to Date Monthly Average		2011 Monthly Average	
	Quantity	Quantity	Quantity	Quantity	Quantity	Quantity	Quantity	Quantity	Quantity	Quantity	Quantity	Quantity	Quantity	%	Quantity	%
Non-Violations	161	194	230	224	221	204	228	256	283	286	170	181	220	83%	0	0%
Violations	28	43	66	56	55	22	36	44	57	66	29	25	44	17%	0	0%
Total:	189	237	296	280	276	226	264	300	340	352	199	206	264	100%	0	0%
Violations																
Uncontrollable Non-Issued	14	24	40	23	30	17	23	18	31	26	14	12	23	51%	0	0%
Controllable Non-Issued	1	3	1	13	0	0	1	1	1	2	0	0	3	6%	0	0%
Citations	13	16	25	20	25	5	12	25	25	38	15	13	19	43%	0	0%
Total:	28	43	66	56	55	22	36	44	57	66	29	25	45	57%	0	0%
Non-Violations																
Rear Axle Violation	0	0	0	0	0	0	0	0	0	0	0	0	0	0%	0	0%
Emergency Vehicle	3	5	6	5	5	7	3	6	7	6	1	3	5	2%	0	0%
Right Turn	0	0	0	0	0	0	0	0	0	0	0	0	0	0%	0	0%
No Violation Occurred	158	189	224	219	216	197	225	250	276	280	169	178	215	98%	0	0%
Total:	161	194	230	224	221	204	228	256	283	286	170	181	220	100%	0	0%
Uncontrollable Non-Issued Violations																
No Plate	4	5	7	6	5	5	4	2	6	6	3	4	5	15%	0	0%
Out of State Plate	0	0	0	0	1	0	1	1	4	2	1	1	2	5%	0	0%
Glare on Plate	0	0	2	1	7	0	3	2	0	4	1	0	3	9%	0	0%
Illegible Plate	1	1	8	4	4	2	3	2	8	7	3	0	4	12%	0	0%
Plate Obstructed	0	0	0	0	0	0	0	1	3	1	2	0	2	6%	0	0%
Windshield Glare	0	1	2	0	1	5	0	3	0	1	1	0	2	6%	0	0%
Driver Obstructed	1	3	4	0	2	0	2	2	2	2	0	1	2	7%	0	0%
Car Obstructed	3	3	5	2	3	1	1	1	1	0	0	0	2	7%	0	0%
No DMV Match Found	5	6	5	5	0	0	2	3	1	0	0	0	4	12%	0	0%
LASD Expired	0	0	2	1	0	2	0	0	0	0	3	4	2	8%	0	0%
LASD Return	0	5	5	4	7	2	7	1	6	3	0	2	4	13%	0	0%
Other	0	0	0	0	0	0	0	0	0	0	0	0	0	0%	0	0%
Total:	14	24	40	23	30	17	23	18	31	26	14	12	32	100%	0	0%
Controllable Non-Issued Violations																
Framing of Plate	0	0	0	0	0	0	0	0	0	0	0	0	0	0%	0	0%
Focus / Clarity of Plate	0	1	0	0	0	0	0	0	0	0	0	0	1	11%	0	0%
Dark Interior	0	0	0	0	0	0	1	0	0	0	0	0	1	11%	0	0%
Framing of Driver	0	0	0	0	0	0	0	0	0	0	0	0	0	0%	0	0%
Focus / Clarity of Driver	0	0	0	0	0	0	0	0	0	0	0	0	0	0%	0	0%
Framing of Car	1	1	0	0	0	0	0	0	0	0	0	0	1	11%	0	0%
Data/Operator Error	0	0	0	0	0	0	0	0	0	0	0	0	0	0%	0	0%
Exposure	0	0	0	0	0	0	0	1	1	2	0	0	1	14%	0	0%
Equipment Malfunction	0	1	1	13	0	0	0	0	0	0	0	0	5	54%	0	0%
ACS Expired	0	0	0	0	0	0	0	0	0	0	0	0	0	0%	0	0%
Total:	1	3	1	13	0	0	1	1	1	2	0	0	9	100%	0	0%
Summary Metrics																
Daily Average Vehicle Passes	753	745	871	755	870	571	741	768	823	708	776	751	Year to Date Monthly Average		2011 Monthly Average	
Average Issued Speed	22	21	21	22	22	24	23	24	20	22	23	21	761		0	
Average Issued Red Seconds	9.8	6.9	1.8	5.5	0.6	26.1	0.4	0.5	0.7	1.5	0.5	0.6	4.6		0.0	
Citation / Violation Issuance Rate	46%	37%	38%	36%	45%	23%	33%	57%	44%	58%	52%	52%	43%		0%	
Controllable Issuance Rate	93%	84%	96%	61%	100%	100%	92%	96%	96%	95%	100%	100%	93%		0%	



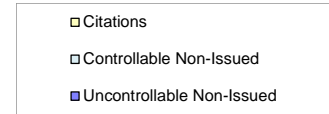
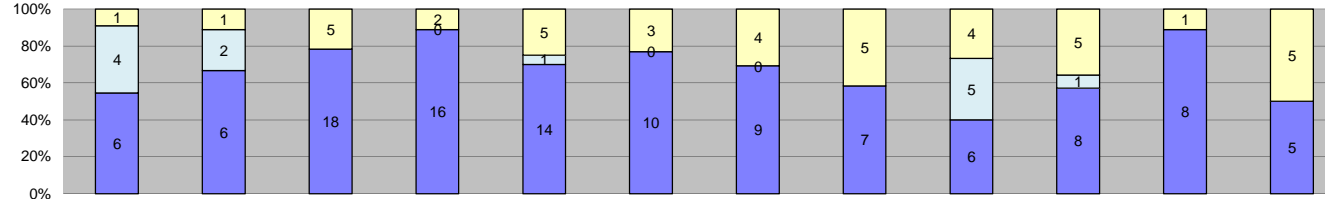
Events	Year to Date												Year to Date Monthly Average		2011 Monthly Average	
	Jan-12	Feb-12	Mar-12	Apr-12	May-12	Jun-12	Jul-12	Aug-12	Sep-12	Oct-12	Nov-12	Dec-12	Quantity	%	Quantity	%
Non-Violations	92	125	60	54	106	113	102	119	108	126	105	76	99	79%	0	0%
Violations	27	40	25	30	36	14	25	39	25	21	20	11	26	21%	0	0%
Total:	119	165	85	84	142	127	127	158	133	147	125	87	125	100%	0	0%
Violations																
Uncontrollable Non-Issued	19	27	19	25	29	8	18	27	18	15	18	10	19	72%	0	0%
Controllable Non-Issued	2	2	0	0	0	0	0	1	2	1	1	0	2	6%	0	0%
Citations	6	11	6	5	7	6	7	11	5	5	1	1	6	22%	0	0%
Total:	27	40	25	30	36	14	25	39	25	21	20	11	27	78%	0	0%
Non-Violations																
Rear Axle Violation	0	0	0	0	0	0	0	0	0	0	1	0	1	1%	0	0%
Emergency Vehicle	5	9	7	0	6	9	2	9	4	6	4	1	6	6%	0	0%
Right Turn	0	0	0	0	0	0	0	0	0	0	0	0	0	0%	0	0%
No Violation Occurred	87	116	53	54	100	104	100	110	104	120	100	75	94	93%	0	0%
Total:	92	125	60	54	106	113	102	119	108	126	105	76	100	100%	0	0%
Uncontrollable Non-Issued Violations																
No Plate	3	8	1	6	6	3	2	4	2	2	0	2	4	14%	0	0%
Out of State Plate	0	0	0	0	0	0	0	0	0	0	0	0	0	0%	0	0%
Glare on Plate	5	0	3	1	5	0	2	2	5	0	1	0	3	12%	0	0%
Illegible Plate	6	7	12	10	11	2	7	12	7	7	10	6	8	32%	0	0%
Plate Obstructed	1	1	0	0	1	1	0	2	1	0	1	0	1	5%	0	0%
Windshield Glare	1	0	1	2	1	1	3	1	1	2	1	1	1	5%	0	0%
Driver Obstructed	0	4	0	1	0	0	1	2	1	4	4	1	2	9%	0	0%
Car Obstructed	0	1	1	1	0	0	0	0	0	0	0	0	1	4%	0	0%
No DMV Match Found	1	3	0	3	1	1	0	2	0	0	0	0	2	7%	0	0%
LASD Expired	0	0	0	0	1	0	0	0	0	0	0	0	1	4%	0	0%
LASD Return	2	3	1	1	3	0	3	2	1	0	1	0	2	8%	0	0%
Other	0	0	0	0	0	0	0	0	0	0	0	0	0	0%	0	0%
Total:	19	27	19	25	29	8	18	27	18	15	18	10	25	100%	0	0%
Controllable Non-Issued Violations																
Framing of Plate	1	0	0	0	0	0	0	1	0	0	0	0	1	22%	0	0%
Focus / Clarity of Plate	0	0	0	0	0	0	0	0	0	0	0	0	0	0%	0	0%
Dark Interior	1	1	0	0	0	0	0	0	0	1	0	0	1	22%	0	0%
Framing of Driver	0	0	0	0	0	0	0	0	0	0	0	0	0	0%	0	0%
Focus / Clarity of Driver	0	0	0	0	0	0	0	0	0	0	0	0	0	0%	0	0%
Framing of Car	0	0	0	0	0	0	0	0	0	0	0	0	0	0%	0	0%
Data/Operator Error	0	0	0	0	0	0	0	0	0	0	0	0	0	0%	0	0%
Exposure	0	0	0	0	0	0	0	0	2	0	1	0	2	33%	0	0%
Equipment Malfunction	0	1	0	0	0	0	0	0	0	0	0	0	1	22%	0	0%
ACS Expired	0	0	0	0	0	0	0	0	0	0	0	0	0	0%	0	0%
Total:	2	2	0	0	0	0	0	1	2	1	1	0	5	100%	0	0%
Summary Metrics																
Daily Average Vehicle Passes	266	284	230	201	325	219	287	271	301	268	285	275	Year to Date Monthly Average		2011 Monthly Average	
Average Issued Speed	19	18	18	16	17	17	21	19	18	17	16	23	268		0	
Average Issued Red Seconds	66.9	65.9	64.1	70.0	70.7	35.0	81.0	33.6	40.3	48.5	99.9	0.5	56.4		0.0	
Citation / Violation Issuance Rate	22%	28%	24%	17%	19%	43%	28%	28%	20%	24%	5%	9%	22%		0%	
Controllable Issuance Rate	75%	85%	100%	100%	100%	100%	100%	92%	71%	83%	50%	100%	88%		0%	



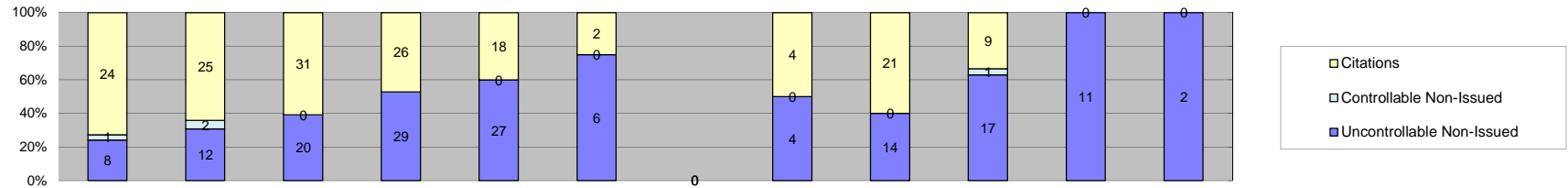
Events	Year to Date												2011 Monthly Average			
	Jan-12	Feb-12	Mar-12	Apr-12	May-12	Jun-12	Jul-12	Aug-12	Sep-12	Oct-12	Nov-12	Dec-12	Quantity	%	Quantity	%
Events													Quantity	%	Quantity	%
Non-Violations	181	247	256	236	190	126	187	103	159	257	211	216	197	85%	0	0%
Violations	32	37	56	43	53	40	20	21	28	24	48	24	36	15%	0	0%
Total:	213	284	312	279	243	166	207	124	187	281	259	240	233	100%	0	0%
Violations																
Uncontrollable Non-Issued	22	28	40	25	33	26	13	14	15	18	27	14	23	64%	0	0%
Controllable Non-Issued	6	2	2	3	1	1	1	0	2	1	11	6	3	9%	0	0%
Citations	4	7	14	15	19	13	6	7	11	5	10	4	10	27%	0	0%
Total:	32	37	56	43	53	40	20	21	28	24	48	24	36	73%	0	0%
Non-Violations																
Rear Axle Violation	0	0	0	0	0	0	0	0	0	0	0	1	1	1%	0	0%
Emergency Vehicle	9	18	14	8	9	2	13	2	5	9	8	1	8	4%	0	0%
Right Turn	0	0	0	0	0	0	0	0	0	0	0	0	0	0%	0	0%
No Violation Occurred	172	229	242	228	181	124	174	101	154	248	203	214	189	95%	0	0%
Total:	181	247	256	236	190	126	187	103	159	257	211	216	198	100%	0	0%
Uncontrollable Non-Issued Violations																
No Plate	3	2	9	4	6	5	3	3	1	6	6	2	4	13%	0	0%
Out of State Plate	0	0	0	2	0	0	0	0	0	0	0	0	2	6%	0	0%
Glare on Plate	0	1	1	0	5	1	0	0	0	0	0	0	2	6%	0	0%
Illegible Plate	1	4	7	6	2	5	4	4	6	6	2	0	4	13%	0	0%
Plate Obstructed	0	1	0	1	0	1	0	2	2	0	1	0	1	4%	0	0%
Windshield Glare	1	1	3	0	0	0	1	2	1	0	1	3	2	5%	0	0%
Driver Obstructed	5	1	3	0	1	1	3	0	1	0	4	0	2	7%	0	0%
Car Obstructed	0	3	2	1	4	0	1	0	0	0	0	0	2	7%	0	0%
No DMV Match Found	3	6	5	5	1	3	1	1	0	0	0	0	3	10%	0	0%
LASD Expired	0	1	0	2	3	6	0	0	0	0	2	3	3	9%	0	0%
LASD Return	9	8	10	4	11	4	0	2	4	6	11	6	7	21%	0	0%
Other	0	0	0	0	0	0	0	0	0	0	0	0	0	0%	0	0%
Total:	22	28	40	25	33	26	13	14	15	18	27	14	33	100%	0	0%
Controllable Non-Issued Violations																
Framing of Plate	1	0	0	0	0	0	0	0	0	0	0	0	1	12%	0	0%
Focus / Clarity of Plate	0	0	0	0	0	0	0	0	0	0	0	0	0	0%	0	0%
Dark Interior	3	1	2	3	1	1	1	0	2	1	8	6	3	31%	0	0%
Framing of Driver	0	0	0	0	0	0	0	0	0	0	0	0	0	0%	0	0%
Focus / Clarity of Driver	0	0	0	0	0	0	0	0	0	0	3	0	3	35%	0	0%
Framing of Car	1	0	0	0	0	0	0	0	0	0	0	0	1	12%	0	0%
Data/Operator Error	0	0	0	0	0	0	0	0	0	0	0	0	0	0%	0	0%
Exposure	0	0	0	0	0	0	0	0	0	0	0	0	0	0%	0	0%
Equipment Malfunction	1	1	0	0	0	0	0	0	0	0	0	0	1	12%	0	0%
ACS Expired	0	0	0	0	0	0	0	0	0	0	0	0	0	0%	0	0%
Total:	6	2	2	3	1	1	1	0	2	1	11	6	9	100%	0	0%
Summary Metrics																
Daily Average Vehicle Passes	549	589	686	583	474	236	334	236	372	606	642	600	Year to Date Monthly Average		2011 Monthly Average	
Average Issued Speed	19	19	18	18	19	19	22	19	20	19	19	20	492		0	
Average Issued Red Seconds	39.4	78.7	40.2	25.9	10.4	8.4	27.8	0.9	18.6	0.6	10.4	25.8	23.9		0.0	
Citation / Violation Issuance Rate	13%	19%	25%	35%	36%	33%	30%	33%	39%	21%	21%	17%	27%		0%	
Controllable Issuance Rate	40%	78%	88%	83%	95%	93%	86%	100%	85%	83%	48%	40%	76%		0%	



Events	2012												Year to Date Monthly Average		2011 Monthly Average	
	Jan-12	Feb-12	Mar-12	Apr-12	May-12	Jun-12	Jul-12	Aug-12	Sep-12	Oct-12	Nov-12	Dec-12	Quantity	%	Quantity	%
Non-Violations	77	99	107	88	62	93	117	93	97	119	119	98	97	53%	0	0%
Violations	80	95	96	75	83	36	90	65	87	136	114	74	86	47%	0	0%
Total:	157	194	203	163	145	129	207	158	184	255	233	172	183	100%	0	0%
Violations																
Uncontrollable Non-Issued	68	82	87	74	80	34	81	59	70	114	107	70	77	89%	0	0%
Controllable Non-Issued	10	10	4	1	0	2	1	1	10	14	1	3	5	6%	0	0%
Citations	2	3	5	0	3	0	8	5	7	8	6	1	5	6%	0	0%
Total:	80	95	96	75	83	36	90	65	87	136	114	74	87	94%	0	0%
Non-Violations																
Rear Axle Violation	0	0	0	0	0	1	0	0	0	0	0	0	1	1%	0	0%
Emergency Vehicle	9	7	3	4	7	4	8	6	0	4	3	3	5	5%	0	0%
Right Turn	0	0	0	0	0	0	0	0	0	0	0	0	0	0%	0	0%
No Violation Occurred	68	92	104	84	55	88	109	87	97	115	116	95	93	94%	0	0%
Total:	77	99	107	88	62	93	117	93	97	119	119	98	99	100%	0	0%
Uncontrollable Non-Issued Violations																
No Plate	5	7	6	7	8	1	5	6	13	11	13	7	7	9%	0	0%
Out of State Plate	0	1	0	0	0	0	2	0	0	3	0	0	2	2%	0	0%
Glare on Plate	0	0	0	0	1	0	0	1	0	1	1	0	1	1%	0	0%
Illegible Plate	3	4	6	4	5	1	8	4	8	6	6	3	5	6%	0	0%
Plate Obstructed	0	0	3	0	2	0	0	2	0	0	1	1	2	2%	0	0%
Windshield Glare	16	13	8	16	16	5	8	8	0	3	8	4	10	11%	0	0%
Driver Obstructed	0	0	1	2	0	1	1	1	1	5	3	1	2	2%	0	0%
Car Obstructed	0	1	2	0	3	1	0	1	3	1	0	0	2	2%	0	0%
No DMV Match Found	7	8	10	6	7	5	6	8	1	7	0	0	6	8%	0	0%
LASD Expired	0	1	0	0	0	1	0	0	0	0	0	0	1	1%	0	0%
LASD Return	37	47	51	39	38	19	51	28	44	84	75	54	47	56%	0	0%
Other	0	0	0	0	0	0	0	0	0	0	0	0	0	0%	0	0%
Total:	68	82	87	74	80	34	81	59	70	114	107	70	85	100%	0	0%
Controllable Non-Issued Violations																
Framing of Plate	0	0	0	0	0	0	0	0	0	0	0	0	0	0%	0	0%
Focus / Clarity of Plate	0	0	0	0	0	0	0	0	0	0	0	0	0	0%	0	0%
Dark Interior	10	4	3	1	0	1	0	0	0	0	0	2	4	26%	0	0%
Framing of Driver	0	0	0	0	0	0	0	0	2	1	0	0	2	11%	0	0%
Focus / Clarity of Driver	0	0	0	0	0	0	0	0	0	0	0	0	0	0%	0	0%
Framing of Car	0	0	0	0	0	0	1	0	0	0	0	0	1	7%	0	0%
Data/Operator Error	0	0	0	0	0	0	0	0	0	0	0	0	0	0%	0	0%
Exposure	0	2	1	0	0	1	0	1	8	13	1	1	4	26%	0	0%
Equipment Malfunction	0	2	0	0	0	0	0	0	0	0	0	0	2	15%	0	0%
ACS Expired	0	2	0	0	0	0	0	0	0	0	0	0	2	15%	0	0%
Total:	10	10	4	1	0	2	1	1	10	14	1	3	14	100%	0	0%
Summary Metrics																
Daily Average Vehicle Passes	1,084	1,138	1,245	822	882	551	1,861	753	786	1,074	934	975	Year to Date Monthly Average		2011 Monthly Average	
Average Issued Speed	15	20	20	0	24	0	22	23	21	21	19	22	1,009		0	
Average Issued Red Seconds	50.3	58.2	0.4	0	0.8	0	0.4	0.5	0.3	0.5	0.5	0.4	11.2		0.0	
Citation / Violation Issuance Rate	3%	3%	5%	0%	4%	0%	9%	8%	8%	6%	5%	1%	5%		0%	
Controllable Issuance Rate	17%	23%	56%	0%	100%	0%	89%	83%	41%	36%	86%	25%	56%		0%	



Events	2012												Year to Date Monthly Average		2011 Monthly Average	
	Jan-12	Feb-12	Mar-12	Apr-12	May-12	Jun-12	Jul-12	Aug-12	Sep-12	Oct-12	Nov-12	Dec-12	Quantity	%	Quantity	%
Non-Violations	244	255	228	176	170	120	149	78	172	113	117	160	165	92%	0	0%
Violations	11	9	23	18	20	13	13	12	15	14	9	10	14	8%	0	0%
Total:	255	264	251	194	190	133	162	90	187	127	126	170	179	100%	0	0%
Violations																
Uncontrollable Non-Issued	6	6	18	16	14	10	9	7	6	8	8	5	9	61%	0	0%
Controllable Non-Issued	4	2	0	0	1	0	0	0	5	1	0	0	3	17%	0	0%
Citations	1	1	5	2	5	3	4	5	4	5	1	5	3	22%	0	0%
Total:	11	9	23	18	20	13	13	12	15	14	9	10	15	78%	0	0%
Non-Violations																
Rear Axle Violation	0	0	0	0	0	0	0	0	0	0	0	0	0	0%	0	0%
Emergency Vehicle	2	1	2	1	1	2	3	0	5	3	3	3	2	1%	0	0%
Right Turn	0	0	0	0	0	0	0	0	0	0	0	0	0	0%	0	0%
No Violation Occurred	242	254	226	175	169	118	146	78	167	110	114	157	163	99%	0	0%
Total:	244	255	228	176	170	120	149	78	172	113	117	160	165	100%	0	0%
Uncontrollable Non-Issued Violations																
No Plate	1	1	3	1	0	1	0	1	0	3	2	1	2	8%	0	0%
Out of State Plate	1	0	0	0	0	0	0	0	0	0	0	0	1	5%	0	0%
Glare on Plate	0	0	0	0	6	1	2	0	0	0	0	0	3	15%	0	0%
Illegible Plate	0	0	0	3	0	0	0	3	2	3	1	0	2	12%	0	0%
Plate Obstructed	0	0	0	2	0	0	1	0	0	0	0	1	1	7%	0	0%
Windshield Glare	0	0	0	1	1	1	2	0	0	1	0	0	1	6%	0	0%
Driver Obstructed	0	0	4	2	0	1	0	1	1	0	1	1	2	8%	0	0%
Car Obstructed	2	4	6	5	3	2	4	0	0	0	0	1	3	17%	0	0%
No DMV Match Found	1	0	2	0	1	0	0	2	0	0	0	0	2	7%	0	0%
LASD Expired	0	1	1	1	0	1	0	0	0	0	2	0	1	6%	0	0%
LASD Return	1	0	2	1	3	3	0	0	3	1	2	1	2	9%	0	0%
Other	0	0	0	0	0	0	0	0	0	0	0	0	0	0%	0	0%
Total:	6	6	18	16	14	10	9	7	6	8	8	5	20	100%	0	0%
Controllable Non-Issued Violations																
Framing of Plate	0	0	0	0	0	0	0	0	0	0	0	0	0	0%	0	0%
Focus / Clarity of Plate	0	0	0	0	1	0	0	0	0	0	0	0	1	13%	0	0%
Dark Interior	3	1	0	0	0	0	0	0	0	0	0	0	2	27%	0	0%
Framing of Driver	0	0	0	0	0	0	0	0	0	0	0	0	0	0%	0	0%
Focus / Clarity of Driver	0	0	0	0	0	0	0	0	0	0	0	0	0	0%	0	0%
Framing of Car	1	0	0	0	0	0	0	0	0	0	0	0	1	13%	0	0%
Data/Operator Error	0	0	0	0	0	0	0	0	0	0	0	0	0	0%	0	0%
Exposure	0	0	0	0	0	0	0	0	3	1	0	0	2	27%	0	0%
Equipment Malfunction	0	1	0	0	0	0	0	0	2	0	0	0	2	20%	0	0%
ACS Expired	0	0	0	0	0	0	0	0	0	0	0	0	0	0%	0	0%
Total:	4	2	0	0	1	0	0	0	5	1	0	0	8	100%	0	0%
Summary Metrics																
Daily Average Vehicle Passes	589	874	933	798	1,074	609	665	407	968	618	751	672	Year to Date Monthly Average		2011 Monthly Average	
Average Issued Speed	26	26	23	17	21	26	23	22	21	22	28	20	746	0		
Average Issued Red Seconds	0.9	0.6	2.5	50.2	20.4	0.7	1.0	20.5	25.4	0.5	99.9	0.5	23	0		
Citation / Violation Issuance Rate	9%	11%	22%	11%	25%	23%	31%	42%	27%	36%	11%	50%	18.6	0.0		
Controllable Issuance Rate	20%	33%	100%	100%	83%	100%	100%	100%	44%	83%	100%	100%	25%	0%		
													80%	0%		



Events	Jan-12	Feb-12	Mar-12	Apr-12	May-12	Jun-12	Jul-12	Aug-12	Sep-12	Oct-12	Nov-12	Dec-12	Year to Date Monthly Average		2011 Monthly Average	
													Quantity	%	Quantity	%
Non-Violations	183	277	275	413	368	132	0	43	401	397	83	61	239	89%	0	0%
Violations	33	39	51	55	45	8	0	8	35	27	11	2	29	11%	0	0%
Total:	216	316	326	468	413	140	0	51	436	424	94	63	268	100%	0	0%
Violations																
Uncontrollable Non-Issued	8	12	20	29	27	6	0	4	14	17	11	2	14	42%	0	0%
Controllable Non-Issued	1	2	0	0	0	0	0	0	0	1	0	0	1	4%	0	0%
Citations	24	25	31	26	18	2	0	4	21	9	0	0	18	54%	0	0%
Total:	33	39	51	55	45	8	0	8	35	27	11	2	33	46%	0	0%
Non-Violations																
Rear Axle Violation	0	4	0	6	0	0	0	0	0	0	0	0	5	2%	0	0%
Emergency Vehicle	0	1	1	1	1	0	0	0	1	1	0	0	1	0%	0	0%
Right Turn	0	0	0	0	0	0	0	0	0	0	0	0	0	0%	0	0%
No Violation Occurred	183	272	274	406	367	132	0	43	400	396	83	61	238	98%	0	0%
Total:	183	277	275	413	368	132	0	43	401	397	83	61	244	100%	0	0%
Uncontrollable Non-Issued Violations																
No Plate	2	1	6	1	1	0	0	0	2	1	1	0	2	8%	0	0%
Out of State Plate	0	3	1	3	1	0	0	2	2	0	0	0	2	8%	0	0%
Glare on Plate	0	0	0	0	0	0	0	0	2	4	1	0	2	10%	0	0%
Illegible Plate	1	0	0	0	0	0	0	1	1	1	0	0	1	4%	0	0%
Plate Obstructed	0	0	1	0	0	0	0	0	0	0	0	0	1	4%	0	0%
Windshield Glare	0	0	0	0	2	0	0	0	2	0	0	0	2	8%	0	0%
Driver Obstructed	0	1	0	0	1	0	0	0	0	0	0	0	1	4%	0	0%
Car Obstructed	0	0	0	0	0	0	0	0	0	0	0	0	0	0%	0	0%
No DMV Match Found	1	2	4	4	1	2	0	4	4	0	0	0	3	11%	0	0%
LASD Expired	0	0	0	0	0	0	0	0	0	0	0	2	2	8%	0	0%
LASD Return	4	5	8	21	21	4	0	1	1	11	9	0	9	35%	0	0%
Other	0	0	0	0	0	0	0	0	0	0	0	0	0	0%	0	0%
Total:	8	12	20	29	27	6	0	4	14	17	11	2	24	100%	0	0%
Controllable Non-Issued Violations																
Framing of Plate	0	0	0	0	0	0	0	0	0	0	0	0	0	0%	0	0%
Focus / Clarity of Plate	0	0	0	0	0	0	0	0	0	1	0	0	1	25%	0	0%
Dark Interior	0	0	0	0	0	0	0	0	0	0	0	0	0	0%	0	0%
Framing of Driver	0	0	0	0	0	0	0	0	0	0	0	0	0	0%	0	0%
Focus / Clarity of Driver	0	0	0	0	0	0	0	0	0	0	0	0	0	0%	0	0%
Framing of Car	0	0	0	0	0	0	0	0	0	0	0	0	0	0%	0	0%
Data/Operator Error	1	0	0	0	0	0	0	0	0	0	0	0	1	25%	0	0%
Exposure	0	0	0	0	0	0	0	0	0	0	0	0	0	0%	0	0%
Equipment Malfunction	0	2	0	0	0	0	0	0	0	0	0	0	2	50%	0	0%
ACS Expired	0	0	0	0	0	0	0	0	0	0	0	0	0	0%	0	0%
Total:	1	2	0	0	0	0	0	0	0	1	0	0	4	100%	0	0%
Summary Metrics																
Daily Average Vehicle Passes	346	368	380	459	534	408	41	499	434	501	499	530	Year to Date Monthly Average		2011 Monthly Average	
Average Issued Speed	18	17	18	18	17	14	0	17	20	17	0	0	417		0	
Average Issued Red Seconds	66.5	47.8	38.4	24.0	22.4	8.8	0	14.6	33.0	11.6	0	0	29.7		0.0	
Citation / Violation Issuance Rate	73%	64%	61%	47%	40%	25%	0%	50%	60%	33%	0%	0%	50%		0%	
Controllable Issuance Rate	96%	93%	100%	100%	100%	100%	0%	100%	100%	90%	0%	0%	98%		0%	

Calls For Information

Reason for Call	Dec-12	3 Month Average	Year to Date Average	Year to Date Total	2011 Average
<i>Appointment</i>	1	1	2	14	0
<i>Bail</i>	0	3	4	38	7
<i>Complaint</i>	0	0	0	0	0
<i>Contest Violation</i>	4	4	6	62	0
<i>Courtesy Notice</i>	2	0	3	20	0
<i>Explain Citation</i>	1	0	2	11	0
<i>Explain Court</i>	0	0	0	0	0
<i>Explain the Project</i>	0	0	0	0	0
<i>Extension</i>	0	2	2	9	0
<i>Other</i>	0	0	0	0	0
<i>Affidavit of Non-Liability</i>	2	5	5	54	0
<i>Affidavit of Non-Liability Status</i>	0	0	0	0	0
<i>Traffic School</i>	0	0	1	7	0
Total Calls	10	16	25	215	0
Appointments Scheduled	1	1	2	14	0
Affidavits of Non-Liability Processed	243	365	277	3,328	0
Court Packets Prepared	5	4	4	27	0



A **xerox** Company

Los Angeles County MTA Expo Line Monthly Citation Yield - By Location *December 2012*

Direction	Location	Code	Days of Enforcement	Events	Violations	Citations	Yield*
SB to EB	Flower @ Washintgon	5008	31	72	4	1	0.03
SB to WB	Flower @ USC Trade Tech	5018	31	70	12	4	0.13
SB to EB	Flower @ 23rd	5028	31	885	0	0	0.00
SB to EB	Flower @ Adams	5038	31	131	6	2	0.06
SB to EB	Flower @ 28th	5048	31	16	9	2	0.06
SB to EB	Flower @ 30th	5058	31	100	6	4	0.13
SB to EB	Flower @ Jefferson	5068	31	80	6	3	0.10
EB to NB	Exposition @ Watt	5077	31	96	6	1	0.03
WB to SB	Exposition @ Bill Robertson	5079	31	101	15	10	0.32
EB to NB	Exposition @ Vermont	5087	31	241	39	20	0.65
WB to SB	Exposition @ Vermont	5089	31	138	6	6	0.19
EB to NB	Exposition @ Raymond	5097	31	463	3	1	0.03
EB to NB	Exposition @ Normandie	5107	31	153	27	4	0.13
WB to SB	Exposition @ Normandie	5109	31	206	25	13	0.42
EB to NB	Exposition @ Halldale	5117	31	87	11	1	0.03
WB to SB	Exposition @ Denker	5119	31	240	24	4	0.13
EB to NB	Exposition @ Western	5127	31	172	74	1	0.03
WB to SB	Exposition @ Western	5129	31	170	10	5	0.16
EB to SB	Exposition @ Crenshaw	5137	31	63	2	0	0.00
Totals			31	3,484	285	82	2.65

*Yield is the number of citations issued per day of enforcement.



A **xerox** Company

**Los Angeles County MTA Expo Line
Disposition Summary Report
December 2012**

Disposition Type	Dec-12		3 Month Average		YTD Total		YTD Average		2011 Average	
	Count	Amount Paid	Count	Amount Paid	Count	Amount Paid	Count	Amount Paid	Count	Amount Paid
<i>Bail Forfeiture</i>	20	\$9,985.00	21	\$10,711	198	\$98,998	17	\$8,250	NA	NA
<i>Fine Paid</i>	6	\$0.00	3	\$1,039	15	\$3,118	1	\$260	NA	NA
<i>Department Void</i>	0	\$0.00	0	\$0	40	\$0	3	\$0	NA	NA
<i>Not Guilty</i>	38	\$0.00	34	\$0	197	\$0	16	\$0	NA	NA
<i>Section D Void</i>	243	\$0.00	365	\$0	2,125	\$0	177	\$0	NA	NA
<i>Traffic School</i>	16	\$8,954.00	12	\$6,850	119	\$64,320	10	\$5,360	NA	NA
Court Gross Total	323	\$18,939.00	435	\$6,850	2,694	\$166,436	225	\$13,870	0	\$0
MTA Gross Total*	42	\$6,094.86	36	\$5,276	332	\$48,143	28	\$4,012	0	\$0

*Logic built on following model (assuming the new 2009 fine and fee structure):

MTA receives \$146.31 of \$446.00 citation where bail forfeiture and fine paid occurs

MTA receives \$148.05 of \$509.00 citation when traffic school option is paid for

	<u>Total</u> <u>Events</u>	<u>Non</u> <u>Violations</u>	<u>Potential</u> <u>Violations</u>	<u>Percent</u> <u>Citable</u>	<u>Non Issued</u> <u>Violations</u>	<u>No DMV</u> <u>Match</u>	<u>Police/</u> <u>Client</u> <u>Rejected</u>	<u>Citations</u> <u>Issued</u>	<u>DMV</u> <u>Match</u> <u>Rate</u>	<u>Issuance</u> <u>Rate</u>	<u>Dispo</u> <u>Paid</u>	<u>Pay</u> <u>Rate</u>	<u>Closed</u> <u>No Pay</u>	<u>Pending</u>	<u>Closure</u> <u>Rate</u>	<u>Court</u> <u>Packs</u>	<u>Contest</u> <u>Rate</u>
Jan-12	3,868	3,371	497	12.85%	374	45	107	123	83.64%	24.75%	22	18%	10	91	26%	0	0.0%
Feb-12	5,540	4,868	672	12.13%	492	61	128	180	83.47%	26.79%	43	24%	22	115	36%	0	0.0%
Mar-12	5,820	5,012	808	13.88%	595	69	181	213	85.10%	26.36%	29	14%	24	160	25%	0	0.0%
Apr-12	5,626	4,943	683	12.14%	523	65	128	160	81.59%	23.43%	13	8%	18	129	19%	0	0.0%
May-12	5,982	5,290	692	11.57%	520	21	149	172	93.86%	24.86%	29	17%	14	129	25%	0	0.0%
Jun-12	4,596	4,209	387	8.42%	302	27	65	85	84.75%	21.96%	12	14%	4	69	19%	2	0.0%
Jul-12	3,935	3,536	399	10.14%	288	21	88	111	90.45%	27.82%	8	7%	14	89	20%	6	27.3%
Aug-12	3,870	3,284	586	15.14%	394	54	86	192	83.73%	32.76%	4	2%	7	181	6%	3	13.6%
Sep-12	5,640	5,071	569	10.09%	361	12	108	208	96.34%	36.56%	3	1%	4	201	3%	2	9.1%
Oct-12	5,957	5,329	628	10.54%	433	0	157	195	100.00%	31.05%	2	1%	4	189	3%	6	27.3%
Nov-12	4,290	3,814	476	11.10%	364	0	134	112	100.00%	23.53%	1	1%	2	109	3%	3	13.6%
Dec-12	3,484	3,199	285	8.18%	203	0	82	82	100.00%	28.77%	0	0%	0	82	0%	5	11.6%
Total	58,608	51,926	6682	11.40%	4,849	375	1413	1,833	89.64%	27.43%	166	14.94%	123	1,544	25.10%	27	8.54%

* Pay Rate and Closure Rate percentages are based on a 4 month lag

** Contested Citations take into account a 6 month lag from the violation date to the trail date.