



Expo Line Monthly Report



Metro

Los Angeles County
Metropolitan Transportation Authority

January - November 2018

CONDUENT



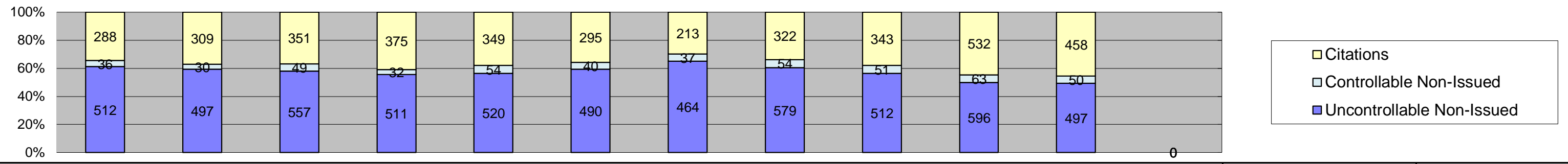
Prepared by: Conduent State and Local Solutions
Confidential

Table of Contents

Report Title	Page
<i>Approach Summary Report, All Locations.....</i>	3
<i>Approach Summary Report, Location 5008: SB to EB Flower @ Washington.....</i>	4
<i>Approach Summary Report, Location 5018: SB to WB Flower @ USC Trade Tech.....</i>	5
<i>Approach Summary Report, Location 5028: SB to EB Flower @ 23rd.....</i>	6
<i>Approach Summary Report, Location 5038: SB to EB Flower @ Adams.....</i>	7
<i>Approach Summary Report, Location 5048: SB to EB Flower @ 28th St.....</i>	8
<i>Approach Summary Report, Location 5058: Sb to EB Flower @ 30th St.....</i>	9
<i>Approach Summary Report, Location 5068: SB to EB Flower @ Jefferson.....</i>	10
<i>Approach Summary Report, Location 5077: EB to NB Exposition @ Watt.....</i>	11
<i>Approach Summary Report, Location 5079: WB to SB Exposition @ Bill Robertson.....</i>	12
<i>Approach Summary Report, Location 5087: EB to NB Exposition @ Vermont.....</i>	13
<i>Approach Summary Report, Location 5089: WB to SB Exposition @ Vermont.....</i>	14
<i>Approach Summary Report, Location 5097: EB to NB Exposition @ Raymond.....</i>	15
<i>Approach Summary Report, Location 5107: EB to NB Exposition @ Normandie.....</i>	16
<i>Approach Summary Report, Location 5109: WB to SB Exposition @ Normandie.....</i>	17
<i>Approach Summary Report, Location 5117: EB to NB Exposition @ Halldale.....</i>	18
<i>Approach Summary Report, Location 5119 WB to SB Exposition @ Denker.....</i>	19
<i>Approach Summary Report, Location 5127: EB to NB Exposition @ Western.....</i>	20
<i>Approach Summary Report, Location 5129: WB to SB Exposition @ Western.....</i>	21
<i>Approach Summary Report, Location 5137: EB to SB Exposition @ Crenshaw.....</i>	22
<i>Monthly Citation Yield Report.....</i>	23



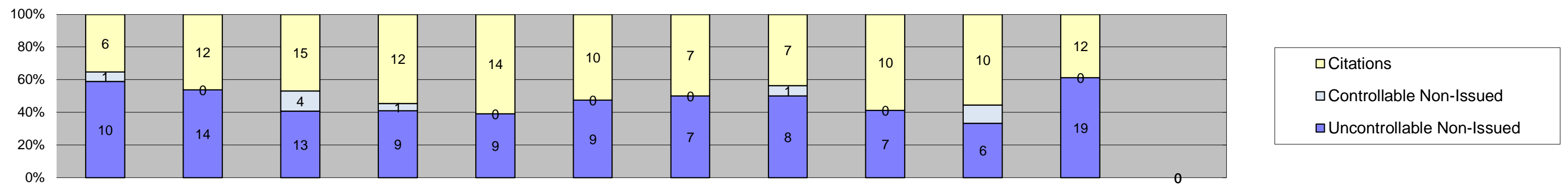
Los Angeles County MTA Expo Line
Approach Summary Report
All Locations
2018



Events	Jan-18	Feb-18	Mar-18	Apr-18	May-18	Jun-18	Jul-18	Aug-18	Sep-18	Oct-18	Nov-18	Dec-18	Year to Date Monthly Average	
													Quantity	%
Non-Violations	12,735	12,518	13,860	12,902	13,947	12,865	11,429	11,263	10,303	11,093	9,867	0	12,071	93%
Violations	836	836	957	918	923	825	714	955	906	1,191	1,005	0	915	7%
Total:	13,571	13,354	14,817	13,820	14,870	13,690	12,143	12,218	11,209	12,284	10,872	0	12,986	100%
Violations														
Uncontrollable Non-Issued	512	497	557	511	520	490	464	579	512	596	497	0	521	57%
Controllable Non-Issued	36	30	49	32	54	40	37	54	51	63	50	0	45	5%
Citations	288	309	351	375	349	295	213	322	343	532	458	0	349	38%
Total:	836	836	957	918	923	825	714	955	906	1,191	1,005	0	915	62%
Non-Violations														
Emergency Vehicle Non-Issuable	20	19	22	21	22	29	22	20	29	15	27	0	22	0%
Emergency Vehicle PD	0	0	0	0	4	3	1	2	0	0	0	0	3	0%
Intersection Control in Progress-PD	0	1	0	2	0	1	0	0	0	1	0	0	1	0%
Gate Down/ No Train	0	0	0	0	0	0	0	0	0	0	0	0	0	0%
No Violation Occurred	10,218	10,082	11,221	10,376	11,384	10,261	8,876	8,653	7,806	5,206	4,614	0	8,972	66%
Rear Axle Activation	108	90	89	104	64	77	79	141	158	147	140	0	109	1%
Right Turn- No Violation	0	0	0	0	0	0	0	0	0	0	0	0	0	0%
Test Shot	2,386	2,325	2,528	2,397	2,473	2,494	2,451	2,447	2,259	2,336	2,187	0	2,389	18%
Train Activation	0	0	0	0	0	0	0	0	51	3,388	2,899	0	2,113	16%
Amber Time Low	1	0	0	0	0	0	0	0	0	0	0	0	1	0%
Vehicle Stopped- PD	2	1	0	2	0	0	0	0	0	0	0	0	2	0%
Total:	12,735	12,518	13,860	12,902	13,947	12,865	11,429	11,263	10,303	11,093	9,867	0	13,612	100%
Uncontrollable Non-Issued Violations														
Administrative Dismissal	0	0	0	0	0	0	0	1	0	0	0	0	1	0%
Address/CDL/DOB Match Fail	0	0	0	0	1	0	0	0	0	0	0	0	1	0%
Car Obstructed	6	5	10	12	5	8	1	14	13	22	14	0	10	2%
Conditions Beyond Control	0	0	0	0	0	0	0	0	0	0	0	0	0	0%
Driver Identity Unclear	62	54	28	27	12	21	22	14	12	35	6	0	27	5%
Driver Obstructed	21	28	40	38	32	43	26	53	36	43	36	0	36	7%
Exposed	0	0	0	0	0	0	0	0	0	0	0	0	0	0%
Emergency Vehicle Issue	5	6	4	6	4	9	3	7	9	5	6	0	6	1%
Glare on Plate	146	158	133	173	174	127	115	139	149	136	132	0	144	26%
Glare on Windshield	35	20	27	40	23	65	74	71	32	40	36	0	42	8%
Illegible Plate	3	1	1	1	2	0	7	6	0	9	4	0	4	1%
Interest of Justice- PD	0	1	0	0	1	0	0	0	0	0	0	0	1	0%
Image Quality- PD	17	9	14	16	20	21	13	15	2	1	19	0	13	2%
Issuance Criteria Not Met- PD	0	0	0	0	0	0	0	0	0	14	1	0	8	1%
No Warning Sign	0	0	0	0	0	0	0	0	0	0	0	0	0	0%
No Plate	144	149	198	155	181	150	165	200	207	235	193	0	180	33%
No Speed Captured	0	0	0	0	0	0	0	0	0	0	0	0	0	0%
Obstruction In Photo- PD	32	32	22	17	27	21	16	21	11	20	14	0	21	4%
Out of State	10	10	16	5	11	10	16	18	11	14	9	0	12	2%
Plate Obstructed	31	23	32	21	27	15	6	19	17	19	7	0	20	4%
Short Yellow- PD	0	0	0	0	0	0	0	0	0	0	0	0	0	0%
Third Party Damage	0	0	0	0	0	0	0	0	0	0	0	0	0	0%
TSB Expired	0	1	0	0	0	0	0	1	12	3	1	0	4	1%
TSB No Hit	0	0	32	0	0	0	0	0	1	0	19	0	17	3%
Total:	512	497	557	511	520	490	464	579	512	596	497	0	545	100%
Controllable Non-Issued Violations														
Conduent Expire	0	0	0	0	0	0	0	0	0	0	0	0	0	0%
Clarity of Plate	0	0	0	0	2	0	0	0	0	0	0	0	2	4%
Clarity of Driver	0	0	0	0	0	0	0	0	0	0	0	0	0	0%
Dark Interior	12	8	14	13	16	11	8	9	21	36	28	0	16	28%
Data Box Related- PD	0	0	0	0	0	0	0	0	0	0	0	0	0	0%
Data Box Data Error- PD	0	0	0	0	2	1	0	0	0	0	0	0	2	3%
Data Entry Error	6	10	17	4	5	3	8	17	10	4	6	0	8	14%
Exposed	0	0	0	0	0	0	0	0	0	0	0	0	0	0%
Equipment Malfunction	5	0	3	0	2	4	1	5	2	8	2	0	4	6%
Framing- PD	0	0	0	0	0	0	0	0	0	0	0	0	0	0%
Framing of Car	6	9	7	15	19	17	18	20	16	15	14	0	14	25%
Framing of Driver	0	0	0	0	0	0	0	3	0	0	0	0	3	5%
Operator Error	0	0	0	0	0	0	0	0	0	0	0	0	0	0%
Framing of Plate	1	0	0	0	0	0	0	0	0	0	0	0	1	2%
Reject Expired	0	0	0	0	0	0	0	0	2	0	0	0	2	4%
Speed Not Determined	6	3	8	0	8	4	2	0	0	0	0	0	5	9%
Total:	36	30	49	32	54	40	37	54	51	63	50	0	57	100%
Summary Metrics														
Daily Average Vehicle Passes	0	0	0	0	0	0	0	0	0	0	0	0	0	0
Average Issued Speed	372	347	375	373	358	333	333	325	323	365	363	0	352	
Average Issued Red Seconds	729	808	851	1,195	1,373	898	1,442	501	601	610	1,202	0	928.1	
Citation / Violation Issuance Rate	34%	37%	37%	41%	38%	36%	30%	34%	38%	45%	46%	0%	38%	
Controllable Issuance Rate	89%	91%	88%	92%	87%	88%	85%	86%	87%	89%	90%	0%	88%	



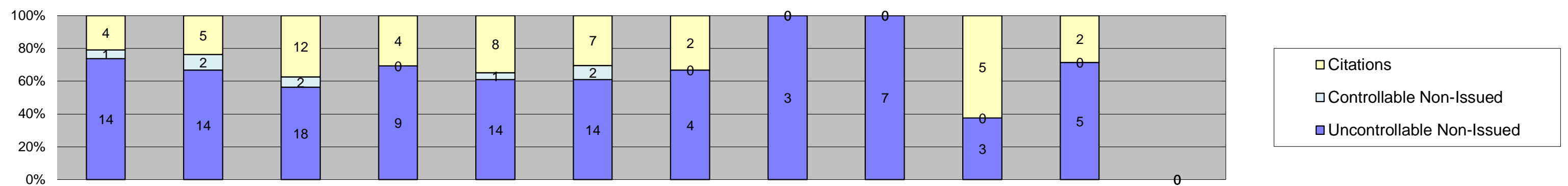
Los Angeles County MTA Expo Line
 Approach Summary Report
 Location 5008: SB to EB Flower @ Washington



Events	Jan-18	Feb-18	Mar-18	Apr-18	May-18	Jun-18	Jul-18	Aug-18	Sep-18	Oct-18	Nov-18	Dec-18	Year to Date Monthly Average	
													Quantity	%
Non-Violations	727	718	731	657	739	616	572	533	502	644	499		631	97%
Violations	17	26	32	22	23	19	14	16	17	18	31		21	3%
Total:	744	744	763	679	762	635	586	549	519	662	530		652	100%
Violations														
Uncontrollable Non-Issued	10	14	13	9	9	9	7	8	7	6	19		10	45%
Controllable Non-Issued	1	0	4	1	0	0	0	1	0	2	0		2	8%
Citations	6	12	15	12	14	10	7	7	10	10	12		10	47%
Total:	17	26	32	22	23	19	14	16	17	18	31		22	53%
Non-Violations														
Emergency Vehicle Non-Issuable	1	1	1	0	0	1	1	2	1	1	1		1	0%
Emergency Vehicle PD	0	0	0	0	0	0	0	0	0	0	0		0	0%
Intersection Control in Progress- PD	0	0	0	0	0	0	0	0	0	0	0		0	0%
Gate Down/ No Train	0	0	0	0	0	0	0	0	0	0	0		0	0%
No Violation Occurred	589	582	595	529	603	491	440	405	378	247	190		459	56%
Rear Axle Activation	8	7	8	5	7	8	11	8	10	6	12		8	1%
Right Turn- No Violation	0	0	0	0	0	0	0	0	0	0	0		0	0%
Test Shot	129	128	127	123	129	116	120	118	113	125	110		122	15%
Train Activation	0	0	0	0	0	0	0	0	0	265	186		226	28%
Amber Time Low	0	0	0	0	0	0	0	0	0	0	0		0	0%
Vehicle Stopped- PD	0	0	0	0	0	0	0	0	0	0	0		0	0%
Total:	727	718	731	657	739	616	572	533	502	644	499		815	100%
Uncontrollable Non-Issued Violations														
Administrative Dismissal	0	0	0	0	0	0	0	0	0	0	0		0	0%
Address/CDL/DOB Match Fail	0	0	0	0	0	0	0	0	0	0	0		0	0%
Car Obstructed	0	0	0	0	0	0	0	0	1	0	1		1	5%
Conditions Beyond Control	0	0	0	0	0	0	0	0	0	0	0		0	0%
Driver Identity Unclear	3	6	2	1	0	1	1	0	0	1	0		2	10%
Driver Obstructed	0	0	0	0	1	0	0	0	0	0	0		1	5%
Exposed	0	0	0	0	0	0	0	0	0	0	0		0	0%
Emergency Vehicle Issue	0	0	0	0	0	0	0	0	0	0	1		1	5%
Glare on Plate	1	3	0	1	0	1	0	0	0	1	2		2	7%
Glare on Windshield	0	0	1	2	1	1	0	0	0	0	1		1	6%
Illegible Plate	0	0	0	0	0	0	0	0	0	0	0		0	0%
Interest of Justice- PD	0	0	0	0	0	0	0	0	0	0	0		0	0%
Image Quality- PD	0	0	1	0	0	0	0	0	1	0	0		1	5%
Issuance Criteria Not Met- PD	0	0	0	0	0	0	0	0	0	0	0		0	0%
No Warning Sign	0	0	0	0	0	0	0	0	0	0	0		0	0%
No Plate	3	3	7	4	5	6	5	8	4	3	8		5	25%
No Speed Captured	0	0	0	0	0	0	0	0	0	0	0		0	0%
Obstruction In Photo- PD	1	2	0	1	1	0	0	0	0	0	3		2	8%
Out of State	2	0	1	0	1	0	1	0	1	1	0		1	6%
Plate Obstructed	0	0	1	0	0	0	0	0	0	0	0		1	5%
Short Yellow- PD	0	0	0	0	0	0	0	0	0	0	0		0	0%
Third Party Damage	0	0	0	0	0	0	0	0	0	0	0		0	0%
TSB Expired	0	0	0	0	0	0	0	0	0	0	0		0	0%
TSB No Hit	0	0	0	0	0	0	0	0	0	0	3		3	14%
Total:	10	14	13	9	9	9	7	8	7	6	19		21	100%
Controllable Non-Issued Violations														
Conduent Expire	0	0	0	0	0	0	0	0	0	0	0		0	0%
Clarity of Plate	0	0	0	0	0	0	0	0	0	0	0		0	0%
Clarity of Driver	0	0	0	0	0	0	0	0	0	0	0		0	0%
Dark Interior	0	0	0	1	0	0	0	0	0	1	0		1	29%
Data Box Related- PD	0	0	0	0	0	0	0	0	0	0	0		0	0%
Data Box Data Error- PD	0	0	0	0	0	0	0	0	0	0	0		0	0%
Data Entry Error	0	0	0	0	0	0	0	0	0	0	0		0	0%
Exposed	0	0	0	0	0	0	0	0	0	0	0		0	0%
Equipment Malfunction	1	0	3	0	0	0	0	1	0	1	0		2	43%
Framing- PD	0	0	0	0	0	0	0	0	0	0	0		0	0%
Framing of Car	0	0	0	0	0	0	0	0	0	0	0		0	0%
Framing of Driver	0	0	0	0	0	0	0	0	0	0	0		0	0%
Operator Error	0	0	0	0	0	0	0	0	0	0	0		0	0%
Framing of Plate	0	0	0	0	0	0	0	0	0	0	0		0	0%
Reject Expired	0	0	0	0	0	0	0	0	0	0	0		0	0%
Speed Not Determined	0	0	1	0	0	0	0	0	0	0	0		1	29%
Total:	1	0	4	1	0	0	0	1	0	2	0		4	100%
Summary Metrics														
Daily Average Vehicle Passes	0	0	0	0	0	0	0	0	0	0	0		0	
Average Issued Speed	24	22	25	21	23	24	22	20	24	25	21		23	
Average Issued Red Seconds	6.2	32.9	6.9	32.3	10.5	0.6	4.2	13.0	3.5	2.7	0.5		10.3	
Citation / Violation Issuance Rate	35%	46%	47%	55%	61%	53%	50%	44%	59%	56%	39%		49%	
Controllable Issuance Rate	86%	100%	79%	92%	100%	100%	100%	88%	100%	83%	100%		93%	



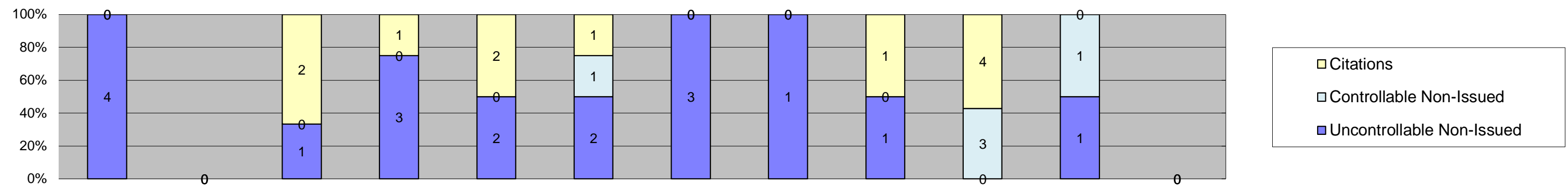
Los Angeles County MTA Expo Line
 Approach Summary Report
 Location 5018: SB to WB Flower @ USC Trade Tech



Events	Jan-18	Feb-18	Mar-18	Apr-18	May-18	Jun-18	Jul-18	Aug-18	Sep-18	Oct-18	Nov-18	Dec-18	Year to Date Monthly Average		
													Quantity	%	
Non-Violations	1,920	2,136	2,559	2,206	2,576	2,520	1,755	783	786	829	631			1,700	99%
Violations	19	21	32	13	23	23	6	3	7	8	7			15	1%
Total:	1,939	2,157	2,591	2,219	2,599	2,543	1,761	786	793	837	638			1,715	100%
Violations															
Uncontrollable Non-Issued	14	14	18	9	14	14	4	3	7	3	5			10	58%
Controllable Non-Issued	1	2	2	0	1	2	0	0	0	0	0			2	10%
Citations	4	5	12	4	8	7	2	0	0	5	2			5	33%
Total:	19	21	32	13	23	23	6	3	7	8	7			17	67%
Non-Violations															
Emergency Vehicle Non-Issuable	0	0	0	1	0	0	0	1	0	0	0			1	0%
Emergency Vehicle PD	0	0	0	0	0	0	0	0	0	0	0			0	0%
Intersection Control in Progress-PD	0	0	0	0	0	0	0	0	0	0	0			0	0%
Gate Down/ No Train	0	0	0	0	0	0	0	0	0	0	0			0	0%
No Violation Occurred	1,768	1,991	2,398	2,050	2,420	2,341	1,591	654	671	505	380			1,524	82%
Rear Axle Activation	4	6	1	0	2	1	0	0	0	0	1			3	0%
Right Turn- No Violation	0	0	0	0	0	0	0	0	0	0	0			0	0%
Test Shot	148	139	160	154	154	178	164	128	115	109	105			141	8%
Train Activation	0	0	0	0	0	0	0	0	0	215	145			180	10%
Amber Time Low	0	0	0	0	0	0	0	0	0	0	0			0	0%
Vehicle Stopped- PD	0	0	0	1	0	0	0	0	0	0	0			1	0%
Total:	1,920	2,136	2,559	2,206	2,576	2,520	1,755	783	786	829	631			1,850	100%
Uncontrollable Non-Issued Violations															
Administrative Dismissal	0	0	0	0	0	0	0	0	0	0	0			0	0%
Address/CDL/DOB Match Fail	0	0	0	0	0	0	0	0	0	0	0			0	0%
Car Obstructed	0	0	0	0	0	0	0	0	0	0	0			0	0%
Conditions Beyond Control	0	0	0	0	0	0	0	0	0	0	0			0	0%
Driver Identity Unclear	1	2	0	0	0	2	0	0	1	0	0			2	8%
Driver Obstructed	3	5	1	0	1	0	0	0	3	0	1			2	12%
Exposed	0	0	0	0	0	0	0	0	0	0	0			0	0%
Emergency Vehicle Issue	0	0	0	0	0	1	0	0	0	0	0			1	5%
Glare on Plate	3	2	2	0	1	1	0	0	0	0	1			2	9%
Glare on Windshield	1	0	3	1	1	4	1	1	1	0	0			2	9%
Illegible Plate	0	0	0	0	0	0	0	0	0	0	0			0	0%
Interest of Justice- PD	0	0	0	0	0	0	0	0	0	0	0			0	0%
Image Quality- PD	0	0	2	2	0	1	0	0	0	0	0			2	9%
Issuance Criteria Not Met- PD	0	0	0	0	0	0	0	0	0	0	0			0	0%
No Warning Sign	0	0	0	0	0	0	0	0	0	0	0			0	0%
No Plate	3	3	6	5	10	5	2	1	2	3	3			4	21%
No Speed Captured	0	0	0	0	0	0	0	0	0	0	0			0	0%
Obstruction In Photo- PD	1	1	1	0	0	0	0	1	0	0	0			1	5%
Out of State	1	0	1	0	1	0	1	0	0	0	0			1	5%
Plate Obstructed	1	1	0	1	0	0	0	0	0	0	0			1	5%
Short Yellow- PD	0	0	0	0	0	0	0	0	0	0	0			0	0%
Third Party Damage	0	0	0	0	0	0	0	0	0	0	0			0	0%
TSB Epired	0	0	0	0	0	0	0	0	0	0	0			0	0%
TSB No Hit	0	0	2	0	0	0	0	0	0	0	0			2	11%
Total:	14	14	18	9	14	14	4	3	7	3	5			19	100%
Controllable Non-Issued Violations															
Conduent Expire	0	0	0	0	0	0	0	0	0	0	0			0	0%
Clarity of Plate	0	0	0	0	0	0	0	0	0	0	0			0	0%
Clarity of Driver	0	0	0	0	0	0	0	0	0	0	0			0	0%
Dark Interior	0	0	0	0	0	0	0	0	0	0	0			0	0%
Data Box Related- PD	0	0	0	0	0	0	0	0	0	0	0			0	0%
Data Box Data Error- PD	0	0	0	0	0	0	0	0	0	0	0			0	0%
Data Entry Error	0	0	2	0	0	0	0	0	0	0	0			2	46%
Exposed	0	0	0	0	0	0	0	0	0	0	0			0	0%
Equipment Malfunction	0	0	0	0	1	1	0	0	0	0	0			1	23%
Framing- PD	0	0	0	0	0	0	0	0	0	0	0			0	0%
Framing of Car	0	0	0	0	0	0	0	0	0	0	0			0	0%
Framing of Driver	0	0	0	0	0	0	0	0	0	0	0			0	0%
Operator Error	0	0	0	0	0	0	0	0	0	0	0			0	0%
Framing of Plate	0	0	0	0	0	0	0	0	0	0	0			0	0%
Reject Expired	0	0	0	0	0	0	0	0	0	0	0			0	0%
Speed Not Determined	1	2	0	0	0	1	0	0	0	0	0			1	31%
Total:	1	2	2	0	1	2	0	0	0	0	0			4	100%
Summary Metrics															
Daily Average Vehicle Passes	0	0	0	0	0	0	0	0	0	0	0			0	
Average Issued Speed	18	16	19	20	18	18	14	17	19	16	16			17	
Average Issued Red Seconds	31.2	8.2	15.3	351.0	11.4	13.9	106.8	46.5	17.1	5.6	6.1			55.7	
Citation / Violation Issuance Rate	21%	24%	38%	31%	35%	30%	33%	0%	0%	63%	29%			34%	
Controllable Issuance Rate	80%	71%	86%	100%	89%	78%	100%	0%	0%	100%	100%			89%	



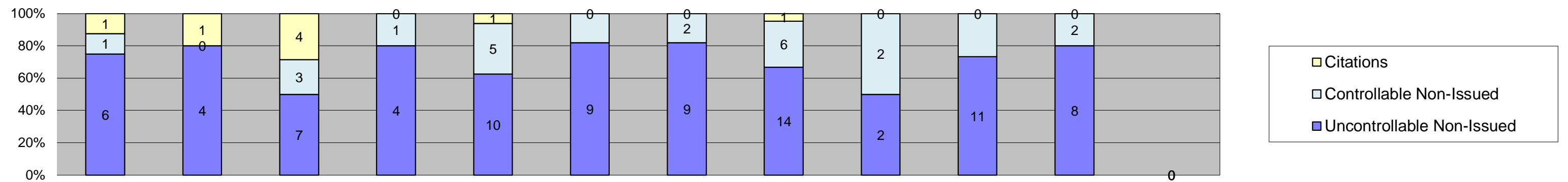
Los Angeles County MTA Expo Line
 Approach Summary Report
 Location 5028: SB to EB Flower @ 23rd



Events	Jan-18	Feb-18	Mar-18	Apr-18	May-18	Jun-18	Jul-18	Aug-18	Sep-18	Oct-18	Nov-18	Dec-18	Year to Date Monthly Average	
													Quantity	%
Non-Violations	1,056	1,081	1,167	1,156	1,114	1,199	1,086	1,207	1,231	1,210	1,044		1,141	100%
Violations	4	0	3	4	4	4	3	1	2	7	2		3	0%
Total:	1,060	1,081	1,170	1,160	1,118	1,203	1,089	1,208	1,233	1,217	1,046		1,144	100%
Violations														
Uncontrollable Non-Issued	4	0	1	3	2	2	3	1	1	0	1		2	36%
Controllable Non-Issued	0	0	0	0	0	1	0	0	0	3	1		2	30%
Citations	0	0	2	1	2	1	0	0	1	4	0		2	33%
Total:	4	0	3	4	4	4	3	1	2	7	2		6	67%
Non-Violations														
Emergency Vehicle Non-Issuable	1	0	0	0	0	0	0	0	1	0	1		1	0%
Emergency Vehicle PD	0	0	0	0	0	0	0	0	0	0	0		0	0%
Intersection Control in Progress-PD	0	0	0	0	0	0	0	0	0	0	0		0	0%
Gate Down/ No Train	0	0	0	0	0	0	0	0	0	0	0		0	0%
No Violation Occurred	925	955	1,040	1,027	980	1,065	956	1,074	1,098	847	748		974	74%
Rear Axle Activation	0	0	0	0	0	0	0	0	0	0	0		0	0%
Right Turn- No Violation	0	0	0	0	0	0	0	0	0	0	0		0	0%
Test Shot	130	126	127	129	134	134	130	133	132	121	119		129	10%
Train Activation	0	0	0	0	0	0	0	0	0	242	176		209	16%
Amber Time Low	0	0	0	0	0	0	0	0	0	0	0		0	0%
Vehicle Stopped- PD	0	0	0	0	0	0	0	0	0	0	0		0	0%
Total:	1,056	1,081	1,167	1,156	1,114	1,199	1,086	1,207	1,231	1,210	1,044		1,313	100%
Uncontrollable Non-Issued Violations														
Administrative Dismissal	0	0	0	0	0	0	0	0	0	0	0		0	0%
Address/CDL/DOB Match Fail	0	0	0	0	0	0	0	0	0	0	0		0	0%
Car Obstructed	0	0	0	0	0	0	0	0	0	0	0		0	0%
Conditions Beyond Control	0	0	0	0	0	0	0	0	0	0	0		0	0%
Driver Identity Unclear	2	0	0	1	0	0	0	0	0	0	1		1	20%
Driver Obstructed	0	0	0	0	0	0	0	0	0	0	0		0	0%
Exposed	0	0	0	0	0	0	0	0	0	0	0		0	0%
Emergency Vehicle Issue	1	0	0	0	0	0	0	0	0	0	0		1	15%
Glare on Plate	0	0	0	0	0	0	0	0	0	0	0		0	0%
Glare on Windshield	0	0	0	0	0	0	2	0	0	0	0		2	30%
Illegible Plate	0	0	0	0	0	0	0	0	0	0	0		0	0%
Interest of Justice- PD	0	0	0	0	0	0	0	0	0	0	0		0	0%
Image Quality- PD	0	0	1	0	0	0	0	0	0	0	0		1	15%
Issuance Criteria Not Met- PD	0	0	0	0	0	0	0	0	0	0	0		0	0%
No Warning Sign	0	0	0	0	0	0	0	0	0	0	0		0	0%
No Plate	1	0	0	2	2	2	1	1	1	0	0		1	21%
No Speed Captured	0	0	0	0	0	0	0	0	0	0	0		0	0%
Obstruction In Photo- PD	0	0	0	0	0	0	0	0	0	0	0		0	0%
Out of State	0	0	0	0	0	0	0	0	0	0	0		0	0%
Plate Obstructed	0	0	0	0	0	0	0	0	0	0	0		0	0%
Short Yellow- PD	0	0	0	0	0	0	0	0	0	0	0		0	0%
Third Party Damage	0	0	0	0	0	0	0	0	0	0	0		0	0%
TSB Epired	0	0	0	0	0	0	0	0	0	0	0		0	0%
TSB No Hit	0	0	0	0	0	0	0	0	0	0	0		0	0%
Total:	4	0	1	3	2	2	3	1	1	0	1		7	100%
Controllable Non-Issued Violations														
Conduent Expire	0	0	0	0	0	0	0	0	0	0	0		0	0%
Clarity of Plate	0	0	0	0	0	0	0	0	0	0	0		0	0%
Clarity of Driver	0	0	0	0	0	0	0	0	0	0	0		0	0%
Dark Interior	0	0	0	0	0	1	0	0	0	2	1		1	57%
Data Box Related- PD	0	0	0	0	0	0	0	0	0	0	0		0	0%
Data Box Data Error- PD	0	0	0	0	0	0	0	0	0	0	0		0	0%
Data Entry Error	0	0	0	0	0	0	0	0	0	0	0		0	0%
Exposed	0	0	0	0	0	0	0	0	0	0	0		0	0%
Equipment Malfunction	0	0	0	0	0	0	0	0	0	0	0		0	0%
Framing- PD	0	0	0	0	0	0	0	0	0	0	0		0	0%
Framing of Car	0	0	0	0	0	0	0	0	0	1	0		1	43%
Framing of Driver	0	0	0	0	0	0	0	0	0	0	0		0	0%
Operator Error	0	0	0	0	0	0	0	0	0	0	0		0	0%
Framing of Plate	0	0	0	0	0	0	0	0	0	0	0		0	0%
Reject Expired	0	0	0	0	0	0	0	0	0	0	0		0	0%
Speed Not Determined	0	0	0	0	0	0	0	0	0	0	0		0	0%
Total:	0	0	0	0	0	1	0	0	0	3	1		2	100%
Summary Metrics														
Daily Average Vehicle Passes	0	0	0	0	0	0	0	0	0	0	0		0	
Average Issued Speed	28	22	17	20	20	0	0	0	18	24	25		22	
Average Issued Red Seconds	200.0	61.0	520.2	61.8	89.6	0.0	0.0	0.0	67.3	19.9	21.5		130.2	
Citation / Violation Issuance Rate	0%	0%	67%	25%	50%	25%	0%	0%	50%	57%	0%		46%	
Controllable Issuance Rate	0%	0%	100%	100%	100%	50%	0%	0%	100%	57%	0%		85%	



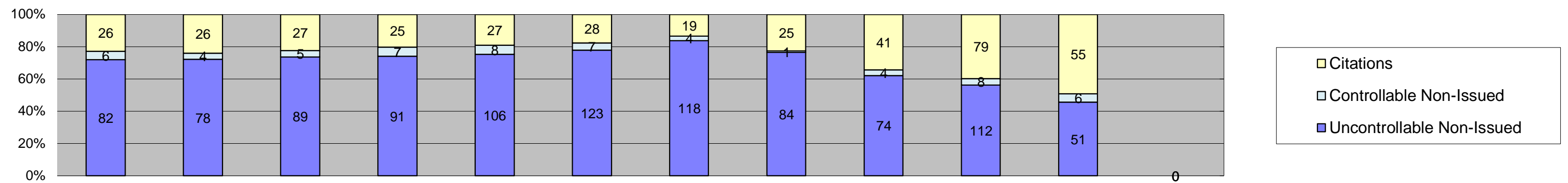
Los Angeles County MTA Expo Line
 Approach Summary Report
 Location 5038: SB to EB Flower @ Adams



Events	Jan-18	Feb-18	Mar-18	Apr-18	May-18	Jun-18	Jul-18	Aug-18	Sep-18	Oct-18	Nov-18	Dec-18	Year to Date Monthly Average	
													Quantity	%
Non-Violations	599	614	592	509	543	487	448	481	534	603	568		543	98%
Violations	8	5	14	5	16	11	11	21	4	15	10		11	2%
Total:	607	619	606	514	559	498	459	502	538	618	578		554	100%
Violations														
Uncontrollable Non-Issued	6	4	7	4	10	9	9	14	2	11	8		8	63%
Controllable Non-Issued	1	0	3	1	5	2	2	6	2	4	2		3	23%
Citations	1	1	4	0	1	0	0	1	0	0	0		2	13%
Total:	8	5	14	5	16	11	11	21	4	15	10		12	87%
Non-Violations														
Emergency Vehicle Non-Issuable	1	3	1	1	0	2	1	0	2	0	0		2	0%
Emergency Vehicle PD	0	0	0	0	0	0	0	0	0	0	0		0	0%
Intersection Control in Progress- PD	0	0	0	0	0	0	0	0	0	0	0		0	0%
Gate Down/ No Train	0	0	0	0	0	0	0	0	0	0	0		0	0%
No Violation Occurred	581	592	569	474	528	468	425	462	518	550	529		518	91%
Rear Axle Activation	6	7	5	11	2	1	2	5	7	6	2		5	1%
Right Turn- No Violation	0	0	0	0	0	0	0	0	0	0	0		0	0%
Test Shot	10	12	17	23	13	16	20	14	7	14	5		14	2%
Train Activation	0	0	0	0	0	0	0	0	0	33	32		33	6%
Amber Time Low	1	0	0	0	0	0	0	0	0	0	0		1	0%
Vehicle Stopped- PD	0	0	0	0	0	0	0	0	0	0	0		0	0%
Total:	599	614	592	509	543	487	448	481	534	603	568		572	100%
Uncontrollable Non-Issued Violations														
Administrative Dismissal	0	0	0	0	0	0	0	0	0	0	0		0	0%
Address/CDL/DOB Match Fail	0	0	0	0	0	0	0	0	0	0	0		0	0%
Car Obstructed	0	0	0	0	0	6	0	0	0	0	0		6	28%
Conditions Beyond Control	0	0	0	0	0	0	0	0	0	0	0		0	0%
Driver Identity Unclear	0	0	1	0	0	0	0	0	0	0	0		1	5%
Driver Obstructed	5	3	4	2	5	0	5	10	1	5	7		5	22%
Exposed	0	0	0	0	0	0	0	0	0	0	0		0	0%
Emergency Vehicle Issue	0	0	0	0	1	0	0	0	0	0	0		1	5%
Glare on Plate	0	0	0	0	0	0	1	0	0	0	0		1	5%
Glare on Windshield	1	0	0	0	1	0	1	1	1	0	1		1	5%
Illegible Plate	0	0	0	0	0	0	0	0	0	0	0		0	0%
Interest of Justice- PD	0	0	0	0	0	0	0	0	0	0	0		0	0%
Image Quality- PD	0	0	0	0	0	0	0	0	0	0	0		0	0%
Issuance Criteria Not Met- PD	0	0	0	0	0	0	0	0	0	3	0		3	14%
No Warning Sign	0	0	0	0	0	0	0	0	0	0	0		0	0%
No Plate	0	1	0	2	1	3	2	2	0	1	0		2	8%
No Speed Captured	0	0	0	0	0	0	0	0	0	0	0		0	0%
Obstruction In Photo- PD	0	0	1	0	0	0	0	0	0	1	0		1	5%
Out of State	0	0	1	0	2	0	0	1	0	1	0		1	6%
Plate Obstructed	0	0	0	0	0	0	0	0	0	0	0		0	0%
Short Yellow- PD	0	0	0	0	0	0	0	0	0	0	0		0	0%
Third Party Damage	0	0	0	0	0	0	0	0	0	0	0		0	0%
TSB Epired	0	0	0	0	0	0	0	0	0	0	0		0	0%
TSB No Hit	0	0	0	0	0	0	0	0	0	0	0		0	0%
Total:	6	4	7	4	10	9	9	14	2	11	8		22	100%
Controllable Non-Issued Violations														
Conduent Expire	0	0	0	0	0	0	0	0	0	0	0		0	0%
Clarity of Plate	0	0	0	0	0	0	0	0	0	0	0		0	0%
Clarity of Driver	0	0	0	0	0	0	0	0	0	0	0		0	0%
Dark Interior	1	0	3	0	5	2	1	3	2	4	1		2	62%
Data Box Related- PD	0	0	0	0	0	0	0	0	0	0	0		0	0%
Data Box Data Error- PD	0	0	0	0	0	0	0	0	0	0	0		0	0%
Data Entry Error	0	0	0	1	0	0	1	3	0	0	1		2	38%
Exposed	0	0	0	0	0	0	0	0	0	0	0		0	0%
Equipment Malfunction	0	0	0	0	0	0	0	0	0	0	0		0	0%
Framing- PD	0	0	0	0	0	0	0	0	0	0	0		0	0%
Framing of Car	0	0	0	0	0	0	0	0	0	0	0		0	0%
Framing of Driver	0	0	0	0	0	0	0	0	0	0	0		0	0%
Operator Error	0	0	0	0	0	0	0	0	0	0	0		0	0%
Framing of Plate	0	0	0	0	0	0	0	0	0	0	0		0	0%
Reject Expired	0	0	0	0	0	0	0	0	0	0	0		0	0%
Speed Not Determined	0	0	0	0	0	0	0	0	0	0	0		0	0%
Total:	1	0	3	1	5	2	2	6	2	4	2		4	100%
Summary Metrics														
Daily Average Vehicle Passes	0	0	0	0	0	0	0	0	0	0	0		0	
Average Issued Speed	17	15	16	17	18	24	16	16	0	33	18		19	
Average Issued Red Seconds	217.2	107.3	162.0	207.7	337.2	164.2	249.0	0.1	0.0	271.1	620.8		233.7	
Citation / Violation Issuance Rate	13%	20%	29%	0%	6%	0%	0%	5%	0%	0%	0%		14%	
Controllable Issuance Rate	50%	100%	57%	0%	17%	0%	0%	14%	0%	0%	0%		48%	



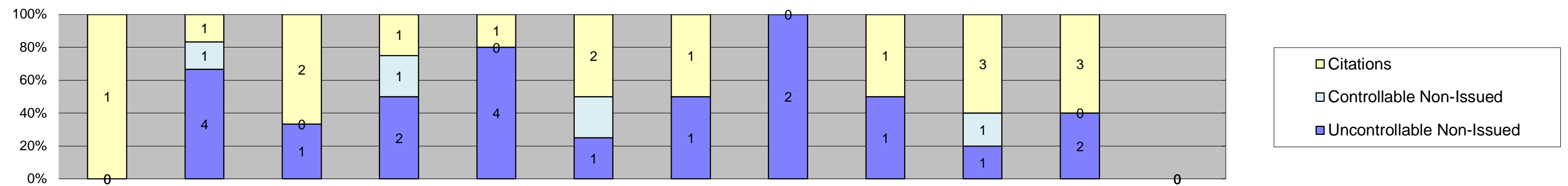
Los Angeles County MTA Expo Line
Approach Summary Report
Location 5048: SB to EB Flower at 28th



Events	Jan-18	Feb-18	Mar-18	Apr-18	May-18	Jun-18	Jul-18	Aug-18	Sep-18	Oct-18	Nov-18	Dec-18	Year to Date Monthly Average	
													Quantity	%
Non-Violations	158	156	151	166	154	163	151	189	163	146	115		156	54%
Violations	114	108	121	123	141	158	141	110	119	199	112		131	46%
Total:	272	264	272	289	295	321	292	299	282	345	227		287	100%
Violations														
Uncontrollable Non-Issued	82	78	89	91	106	123	118	84	74	112	51		92	70%
Controllable Non-Issued	6	4	5	7	8	7	4	1	4	8	6		5	4%
Citations	26	26	27	25	27	28	19	25	41	79	55		34	26%
Total:	114	108	121	123	141	158	141	110	119	199	112		131	74%
Non-Violations														
Emergency Vehicle Non-Issuable	0	2	0	2	1	0	0	1	0	0	0		2	1%
Emergency Vehicle PD	0	0	0	0	1	2	0	0	0	0	0		2	1%
Intersection Control in Progress- PD	0	1	0	1	0	1	0	0	0	0	0		1	1%
Gate Down/ No Train	0	0	0	0	0	0	0	0	0	0	0		0	0%
No Violation Occurred	17	18	17	21	21	18	15	41	31	13	10		20	13%
Rear Axle Activation	9	4	6	7	11	13	5	12	4	6	4		7	5%
Right Turn- No Violation	0	0	0	0	0	0	0	0	0	0	0		0	0%
Test Shot	132	131	128	134	120	129	131	135	127	124	100		126	79%
Train Activation	0	0	0	0	0	0	0	0	1	3	1		2	1%
Amber Time Low	0	0	0	0	0	0	0	0	0	0	0		0	0%
Vehicle Stopped- PD	0	0	0	1	0	0	0	0	0	0	0		1	1%
Total:	158	156	151	166	154	163	151	189	163	146	115		161	100%
Uncontrollable Non-Issued Violations														
Administrative Dismissal	0	0	0	0	0	0	0	0	0	0	0		0	0%
Address/CDL/DOB Match Fail	0	0	0	0	1	0	0	0	0	0	0		1	1%
Car Obstructed	0	0	0	1	0	0	0	0	0	1	1		1	1%
Conditions Beyond Control	0	0	0	0	0	0	0	0	0	0	0		0	0%
Driver Identity Unclear	20	15	11	14	5	9	10	3	2	2	0		9	9%
Driver Obstructed	9	10	17	18	12	22	12	16	16	25	14		16	15%
Exposed	0	0	0	0	0	0	0	0	0	0	0		0	0%
Emergency Vehicle Issue	0	0	0	0	0	1	0	0	0	0	0		1	1%
Glare on Plate	2	6	1	7	1	1	0	2	11	17	5		5	5%
Glare on Windshield	1	3	14	18	13	46	48	26	3	2	0		17	17%
Illegible Plate	0	0	0	0	0	0	0	0	0	0	0		0	0%
Interest of Justice- PD	0	0	0	0	0	0	0	0	0	0	0		0	0%
Image Quality- PD	2	6	6	6	11	5	8	8	0	0	1		6	6%
Issuance Criteria Not Met- PD	0	0	0	0	0	0	0	0	0	2	0		2	2%
No Warning Sign	0	0	0	0	0	0	0	0	0	0	0		0	0%
No Plate	29	24	28	21	38	26	28	22	34	47	21		29	28%
No Speed Captured	0	0	0	0	0	0	0	0	0	0	0		0	0%
Obstruction In Photo- PD	13	10	6	3	17	9	11	5	6	10	6		9	9%
Out of State	1	2	0	1	3	2	1	2	1	4	1		2	2%
Plate Obstructed	5	2	3	2	5	2	0	0	1	2	1		3	2%
Short Yellow- PD	0	0	0	0	0	0	0	0	0	0	0		0	0%
Third Party Damage	0	0	0	0	0	0	0	0	0	0	0		0	0%
TSB Epired	0	0	0	0	0	0	0	0	0	0	0		0	0%
TSB No Hit	0	0	3	0	0	0	0	0	0	0	1		2	2%
Total:	82	78	89	91	106	123	118	84	74	112	51		102	100%
Controllable Non-Issued Violations														
Conduent Expire	0	0	0	0	0	0	0	0	0	0	0		0	0%
Clarity of Plate	0	0	0	0	0	0	0	0	0	0	0		0	0%
Clarity of Driver	0	0	0	0	0	0	0	0	0	0	0		0	0%
Dark Interior	3	3	4	6	6	5	2	0	4	5	5		4	45%
Data Box Related- PD	0	0	0	0	0	0	0	0	0	0	0		0	0%
Data Box Data Error- PD	0	0	0	0	0	0	0	0	0	0	0		0	0%
Data Entry Error	1	0	1	1	0	1	1	1	0	1	1		1	11%
Exposed	0	0	0	0	0	0	0	0	0	0	0		0	0%
Equipment Malfunction	2	0	0	0	0	0	1	0	0	2	0		2	18%
Framing- PD	0	0	0	0	0	0	0	0	0	0	0		0	0%
Framing of Car	0	1	0	0	0	0	0	0	0	0	0		1	11%
Framing of Driver	0	0	0	0	0	0	0	0	0	0	0		0	0%
Operator Error	0	0	0	0	0	0	0	0	0	0	0		0	0%
Framing of Plate	0	0	0	0	0	0	0	0	0	0	0		0	0%
Reject Expired	0	0	0	0	0	0	0	0	0	0	0		0	0%
Speed Not Determined	0	0	0	0	2	1	0	0	0	0	0		2	16%
Total:	6	4	5	7	8	7	4	1	4	8	6		9	100%
Summary Metrics														
Daily Average Vehicle Passes	0	0	0	0	0	0	0	0	0	0	0		0	
Average Issued Speed	27	27	28	27	27	28	28	26	27	27	27		27	
Average Issued Red Seconds	0.4	0.5	0.5	0.4	0.9	0.5	2.9	0.5	0.6	0.5	0.5		0.7	
Citation / Violation Issuance Rate	23%	24%	22%	20%	19%	18%	13%	23%	34%	40%	49%		26%	
Controllable Issuance Rate	81%	87%	84%	78%	77%	80%	83%	96%	91%	91%	90%		85%	



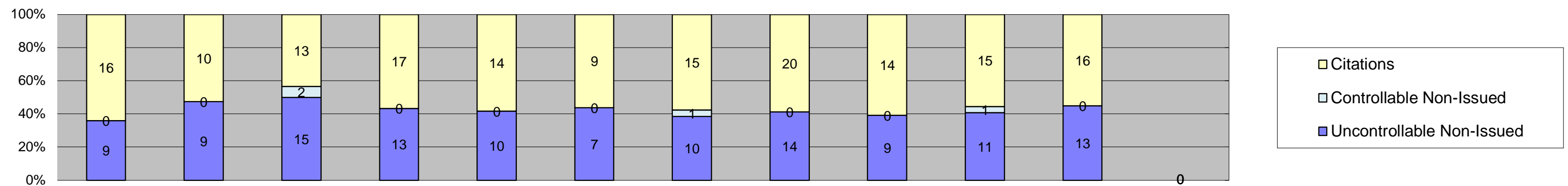
Los Angeles County MTA Expo Line
 Approach Summary Report
 Location 5058: SB to EB Flower @ 30th



Events	Jan-18	Feb-18	Mar-18	Apr-18	May-18	Jun-18	Jul-18	Aug-18	Sep-18	Oct-18	Nov-18	Dec-18	Year to Date Monthly Average	
													Quantity	%
Non-Violations	952	915	1,075	963	977	871	902	1,071	939	1,127	998		981	100%
Violations	1	6	3	4	5	4	2	2	2	5	5		4	0%
Total:	953	921	1,078	967	982	875	904	1,073	941	1,132	1,003		984	100%
Violations														
Uncontrollable Non-Issued	0	4	1	2	4	1	1	2	1	1	2		2	42%
Controllable Non-Issued	0	1	0	1	0	1	0	0	0	1	0		1	22%
Citations	1	1	2	1	1	2	1	0	1	3	3		2	36%
Total:	1	6	3	4	5	4	2	2	2	5	5		5	64%
Non-Violations														
Emergency Vehicle Non-Issuable	0	0	0	0	0	0	0	0	0	0	1		1	0%
Emergency Vehicle PD	0	0	0	0	0	0	0	0	0	0	0		0	0%
Intersection Control in Progress- PD	0	0	0	0	0	0	0	0	0	0	0		0	0%
Gate Down/ No Train	0	0	0	0	0	0	0	0	0	0	0		0	0%
No Violation Occurred	804	764	913	818	818	726	756	910	791	467	417		744	55%
Rear Axle Activation	2	2	1	0	1	1	0	3	0	2	0		2	0%
Right Turn- No Violation	0	0	0	0	0	0	0	0	0	0	0		0	0%
Test Shot	146	149	161	145	158	144	146	158	148	172	134		151	11%
Train Activation	0	0	0	0	0	0	0	0	0	486	446		466	34%
Amber Time Low	0	0	0	0	0	0	0	0	0	0	0		0	0%
Vehicle Stopped- PD	0	0	0	0	0	0	0	0	0	0	0		0	0%
Total:	952	915	1,075	963	977	871	902	1,071	939	1,127	998		1,364	100%
Uncontrollable Non-Issued Violations														
Administrative Dismissal	0	0	0	0	0	0	0	0	0	0	0		0	0%
Address/CDL/DOB Match Fail	0	0	0	0	0	0	0	0	0	0	0		0	0%
Car Obstructed	0	0	0	0	0	0	0	0	0	0	0		0	0%
Conditions Beyond Control	0	0	0	0	0	0	0	0	0	0	0		0	0%
Driver Identity Unclear	0	0	0	0	0	0	0	0	0	0	0		0	0%
Driver Obstructed	0	0	0	0	0	0	0	0	0	0	0		0	0%
Exposed	0	0	0	0	0	0	0	0	0	0	0		0	0%
Emergency Vehicle Issue	0	0	0	0	0	0	0	0	0	0	0		0	0%
Glare on Plate	0	0	0	0	0	1	0	0	0	0	1		1	22%
Glare on Windshield	0	0	0	0	0	0	0	0	0	0	0		0	0%
Illegible Plate	0	0	0	0	0	0	0	0	0	0	0		0	0%
Interest of Justice- PD	0	0	0	0	0	0	0	0	0	0	0		0	0%
Image Quality- PD	0	0	0	0	0	0	0	0	0	0	0		0	0%
Issuance Criteria Not Met- PD	0	0	0	0	0	0	0	0	0	0	0		0	0%
No Warning Sign	0	0	0	0	0	0	0	0	0	0	0		0	0%
No Plate	0	3	1	1	4	0	0	1	1	1	1		2	35%
No Speed Captured	0	0	0	0	0	0	0	0	0	0	0		0	0%
Obstruction In Photo- PD	0	0	0	0	0	0	0	1	0	0	0		1	22%
Out of State	0	1	0	1	0	0	1	0	0	0	0		1	22%
Plate Obstructed	0	0	0	0	0	0	0	0	0	0	0		0	0%
Short Yellow- PD	0	0	0	0	0	0	0	0	0	0	0		0	0%
Third Party Damage	0	0	0	0	0	0	0	0	0	0	0		0	0%
TSB Epired	0	0	0	0	0	0	0	0	0	0	0		0	0%
TSB No Hit	0	0	0	0	0	0	0	0	0	0	0		0	0%
Total:	0	4	1	2	4	1	1	2	1	1	2		5	100%
Controllable Non-Issued Violations														
Conduent Expire	0	0	0	0	0	0	0	0	0	0	0		0	0%
Clarity of Plate	0	0	0	0	0	0	0	0	0	0	0		0	0%
Clarity of Driver	0	0	0	0	0	0	0	0	0	0	0		0	0%
Dark Interior	0	1	0	0	0	0	0	0	0	0	0		1	25%
Data Box Related- PD	0	0	0	0	0	0	0	0	0	0	0		0	0%
Data Box Data Error- PD	0	0	0	0	0	0	0	0	0	0	0		0	0%
Data Entry Error	0	0	0	0	0	0	0	0	0	0	0		0	0%
Exposed	0	0	0	0	0	0	0	0	0	0	0		0	0%
Equipment Malfunction	0	0	0	0	0	0	0	0	0	1	0		1	25%
Framing- PD	0	0	0	0	0	0	0	0	0	0	0		0	0%
Framing of Car	0	0	0	1	0	0	0	0	0	0	0		1	25%
Framing of Driver	0	0	0	0	0	0	0	0	0	0	0		0	0%
Operator Error	0	0	0	0	0	0	0	0	0	0	0		0	0%
Framing of Plate	0	0	0	0	0	0	0	0	0	0	0		0	0%
Reject Expired	0	0	0	0	0	0	0	0	0	0	0		0	0%
Speed Not Determined	0	0	0	0	0	1	0	0	0	0	0		1	25%
Total:	0	1	0	1	0	1	0	0	0	1	0		4	100%
Summary Metrics														
Daily Average Vehicle Passes	0	0	0	0	0	0	0	0	0	0	0		0	
Average Issued Speed	16	16	17	22	18	18	23	16	14	17	23		18	
Average Issued Red Seconds	46.0	54.5	39.6	97.3	28.0	250.5	419.2	46.7	95.2	40.7	19.4		103.4	
Citation / Violation Issuance Rate	100%	17%	67%	25%	20%	50%	50%	0%	50%	60%	60%		50%	
Controllable Issuance Rate	100%	50%	100%	50%	100%	67%	100%	0%	100%	75%	100%		84%	



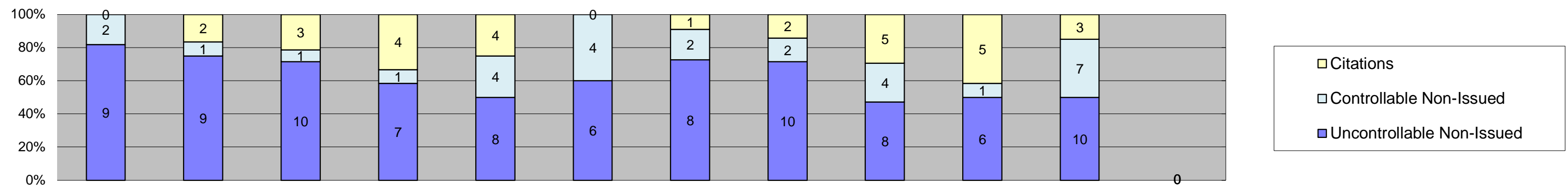
Los Angeles County MTA Expo Line
 Approach Summary Report
 Location 5068: SB to EB Flower @ Jefferson



Events	Jan-18	Feb-18	Mar-18	Apr-18	May-18	Jun-18	Jul-18	Aug-18	Sep-18	Oct-18	Nov-18	Dec-18	Year to Date Monthly Average	
													Quantity	%
Non-Violations	1,151	1,124	1,171	1,086	1,161	1,014	951	933	909	996	1,056		1,050	98%
Violations	25	19	30	30	24	16	26	34	23	27	29		26	2%
Total:	1,176	1,143	1,201	1,116	1,185	1,030	977	967	932	1,023	1,085		1,076	100%
Violations														
Uncontrollable Non-Issued	9	9	15	13	10	7	10	14	9	11	13		11	41%
Controllable Non-Issued	0	0	2	0	0	0	1	0	0	1	0		1	5%
Citations	16	10	13	17	14	9	15	20	14	15	16		14	54%
Total:	25	19	30	30	24	16	26	34	23	27	29		27	46%
Non-Violations														
Emergency Vehicle Non-Issuable	1	0	0	0	0	0	0	0	1	0	2		1	0%
Emergency Vehicle PD	0	0	0	0	0	0	0	0	0	0	0		0	0%
Intersection Control in Progress- PD	0	0	0	0	0	0	0	0	0	1	0		1	0%
Gate Down/ No Train	0	0	0	0	0	0	0	0	0	0	0		0	0%
No Violation Occurred	987	971	1,001	931	997	861	798	783	780	638	688		858	71%
Rear Axle Activation	2	1	3	3	0	0	2	4	3	5	3		3	0%
Right Turn- No Violation	0	0	0	0	0	0	0	0	0	0	0		0	0%
Test Shot	161	152	167	152	164	153	151	146	125	158	161		154	13%
Train Activation	0	0	0	0	0	0	0	0	0	194	202		198	16%
Amber Time Low	0	0	0	0	0	0	0	0	0	0	0		0	0%
Vehicle Stopped- PD	0	0	0	0	0	0	0	0	0	0	0		0	0%
Total:	1,151	1,124	1,171	1,086	1,161	1,014	951	933	909	996	1,056		1,215	100%
Uncontrollable Non-Issued Violations														
Administrative Dismissal	0	0	0	0	0	0	0	0	0	0	0		0	0%
Address/CDL/DOB Match Fail	0	0	0	0	0	0	0	0	0	0	0		0	0%
Car Obstructed	0	0	0	1	0	0	0	0	0	1	0		1	4%
Conditions Beyond Control	0	0	0	0	0	0	0	0	0	0	0		0	0%
Driver Identity Unclear	1	1	0	0	0	0	1	0	0	0	0		1	4%
Driver Obstructed	0	0	1	1	1	0	2	4	0	0	4		2	9%
Exposed	0	0	0	0	0	0	0	0	0	0	0		0	0%
Emergency Vehicle Issue	0	0	0	0	0	0	0	1	0	0	0		1	4%
Glare on Plate	0	1	2	2	1	1	2	0	0	0	1		1	6%
Glare on Windshield	0	0	0	0	0	1	0	2	0	1	0		1	5%
Illegible Plate	0	0	0	0	0	0	0	0	0	0	0		0	0%
Interest of Justice- PD	0	0	0	0	1	0	0	0	0	0	0		1	4%
Image Quality- PD	0	0	1	0	0	0	0	0	0	0	0		1	4%
Issuance Criteria Not Met- PD	0	0	0	0	0	0	0	0	0	2	0		2	8%
No Warning Sign	0	0	0	0	0	0	0	0	0	0	0		0	0%
No Plate	4	6	6	7	4	3	4	4	9	5	7		5	22%
No Speed Captured	0	0	0	0	0	0	0	0	0	0	0		0	0%
Obstruction In Photo- PD	1	0	1	0	2	1	0	1	0	0	0		1	5%
Out of State	1	1	1	2	1	1	1	1	0	0	1		1	5%
Plate Obstructed	2	0	0	0	0	0	0	1	0	2	0		2	7%
Short Yellow- PD	0	0	0	0	0	0	0	0	0	0	0		0	0%
Third Party Damage	0	0	0	0	0	0	0	0	0	0	0		0	0%
TSB Epired	0	0	0	0	0	0	0	0	0	0	0		0	0%
TSB No Hit	0	0	3	0	0	0	0	0	0	0	0		3	12%
Total:	9	9	15	13	10	7	10	14	9	11	13		24	100%
Controllable Non-Issued Violations														
Conduent Expire	0	0	0	0	0	0	0	0	0	0	0		0	0%
Clarity of Plate	0	0	0	0	0	0	0	0	0	0	0		0	0%
Clarity of Driver	0	0	0	0	0	0	0	0	0	0	0		0	0%
Dark Interior	0	0	0	0	0	0	0	0	0	0	0		0	0%
Data Box Related- PD	0	0	0	0	0	0	0	0	0	0	0		0	0%
Data Box Data Error- PD	0	0	0	0	0	0	0	0	0	0	0		0	0%
Data Entry Error	0	0	2	0	0	0	1	0	0	1	0		1	100%
Exposed	0	0	0	0	0	0	0	0	0	0	0		0	0%
Equipment Malfunction	0	0	0	0	0	0	0	0	0	0	0		0	0%
Framing- PD	0	0	0	0	0	0	0	0	0	0	0		0	0%
Framing of Car	0	0	0	0	0	0	0	0	0	0	0		0	0%
Framing of Driver	0	0	0	0	0	0	0	0	0	0	0		0	0%
Operator Error	0	0	0	0	0	0	0	0	0	0	0		0	0%
Framing of Plate	0	0	0	0	0	0	0	0	0	0	0		0	0%
Reject Expired	0	0	0	0	0	0	0	0	0	0	0		0	0%
Speed Not Determined	0	0	0	0	0	0	0	0	0	0	0		0	0%
Total:	0	0	2	0	0	0	1	0	0	1	0		1	100%
Summary Metrics														
Daily Average Vehicle Passes	0	0	0	0	0	0	0	0	0	0	0		0	
Average Issued Speed	19	19	19	18	20	19	17	18	18	19	18		19	
Average Issued Red Seconds	0.4	8.1	0.5	3.2	28.0	0.6	0.5	31.9	55.8	23.6	21.6		15.8	
Citation / Violation Issuance Rate	64%	53%	43%	57%	58%	56%	58%	59%	61%	56%	55%		56%	
Controllable Issuance Rate	100%	100%	87%	100%	100%	100%	94%	100%	100%	94%	100%		98%	



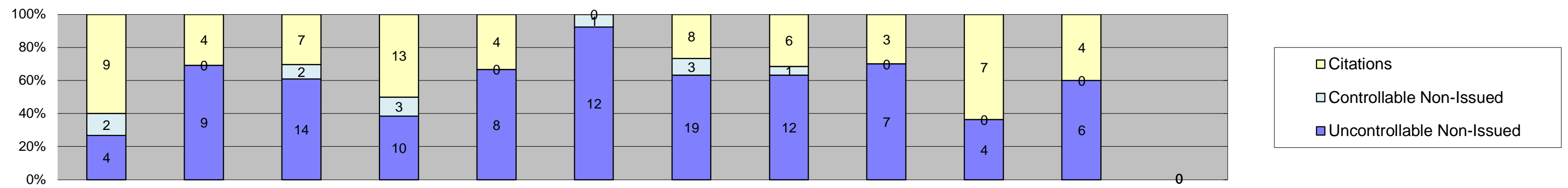
Los Angeles County MTA Expo Line
 Approach Summary Report
 Location 5077: EB to NB Exposition @ Watt



Events	Jan-18	Feb-18	Mar-18	Apr-18	May-18	Jun-18	Jul-18	Aug-18	Sep-18	Oct-18	Nov-18	Dec-18	Year to Date Monthly Average	
													Quantity	%
Non-Violations	219	257	327	261	252	211	217	226	206	252	221		241	95%
Violations	11	12	14	12	16	10	11	14	17	12	20		14	5%
Total:	230	269	341	273	268	221	228	240	223	264	241		254	100%
Violations														
Uncontrollable Non-Issued	9	9	10	7	8	6	8	10	8	6	10		8	59%
Controllable Non-Issued	2	1	1	1	4	4	2	2	4	1	7		3	19%
Citations	0	2	3	4	4	0	1	2	5	5	3		3	23%
Total:	11	12	14	12	16	10	11	14	17	12	20		14	77%
Non-Violations														
Emergency Vehicle Non-Issuable	1	1	2	2	3	1	3	2	4	2	0		2	1%
Emergency Vehicle PD	0	0	0	0	0	0	0	0	0	0	0		0	0%
Intersection Control in Progress- PD	0	0	0	0	0	0	0	0	0	0	0		0	0%
Gate Down/ No Train	0	0	0	0	0	0	0	0	0	0	0		0	0%
No Violation Occurred	98	127	125	127	112	90	97	105	96	87	62		102	37%
Rear Axle Activation	0	0	1	1	1	0	1	0	1	0	0		1	0%
Right Turn- No Violation	0	0	0	0	0	0	0	0	0	0	0		0	0%
Test Shot	120	129	199	131	136	120	116	119	105	122	121		129	47%
Train Activation	0	0	0	0	0	0	0	0	0	41	38		40	14%
Amber Time Low	0	0	0	0	0	0	0	0	0	0	0		0	0%
Vehicle Stopped- PD	0	0	0	0	0	0	0	0	0	0	0		0	0%
Total:	219	257	327	261	252	211	217	226	206	252	221		274	100%
Uncontrollable Non-Issued Violations														
Administrative Dismissal	0	0	0	0	0	0	0	0	0	0	0		0	0%
Address/CDL/DOB Match Fail	0	0	0	0	0	0	0	0	0	0	0		0	0%
Car Obstructed	0	0	0	0	0	0	0	1	0	1	0		1	6%
Conditions Beyond Control	0	0	0	0	0	0	0	0	0	0	0		0	0%
Driver Identity Unclear	0	1	1	0	0	0	0	0	0	1	0		1	6%
Driver Obstructed	1	0	0	2	0	2	1	2	1	0	0		2	9%
Exposed	0	0	0	0	0	0	0	0	0	0	0		0	0%
Emergency Vehicle Issue	0	0	0	0	1	0	0	0	0	0	1		1	6%
Glare on Plate	2	6	5	3	4	3	1	4	4	0	3		4	21%
Glare on Windshield	0	1	0	0	0	0	2	1	1	0	1		1	7%
Illegible Plate	1	0	0	0	0	0	0	0	0	0	0		1	6%
Interest of Justice- PD	0	0	0	0	0	0	0	0	0	0	0		0	0%
Image Quality- PD	1	1	0	0	0	0	0	0	0	0	0		1	6%
Issuance Criteria Not Met- PD	0	0	0	0	0	0	0	0	0	0	0		0	0%
No Warning Sign	0	0	0	0	0	0	0	0	0	0	0		0	0%
No Plate	4	0	3	1	3	1	4	2	2	3	3		3	15%
No Speed Captured	0	0	0	0	0	0	0	0	0	0	0		0	0%
Obstruction In Photo- PD	0	0	0	0	0	0	0	0	0	0	1		1	6%
Out of State	0	0	0	0	0	0	0	0	0	0	1		1	6%
Plate Obstructed	0	0	1	1	0	0	0	0	0	1	0		1	6%
Short Yellow- PD	0	0	0	0	0	0	0	0	0	0	0		0	0%
Third Party Damage	0	0	0	0	0	0	0	0	0	0	0		0	0%
TSB Epired	0	0	0	0	0	0	0	0	0	0	0		0	0%
TSB No Hit	0	0	0	0	0	0	0	0	0	0	0		0	0%
Total:	9	9	10	7	8	6	8	10	8	6	10		17	100%
Controllable Non-Issued Violations														
Conduent Expire	0	0	0	0	0	0	0	0	0	0	0		0	0%
Clarity of Plate	0	0	0	0	0	0	0	0	0	0	0		0	0%
Clarity of Driver	0	0	0	0	0	0	0	0	0	0	0		0	0%
Dark Interior	0	0	1	1	1	1	0	0	3	1	2		1	23%
Data Box Related- PD	0	0	0	0	0	0	0	0	0	0	0		0	0%
Data Box Data Error- PD	0	0	0	0	0	0	0	0	0	0	0		0	0%
Data Entry Error	1	0	0	0	0	0	0	0	0	0	1		1	16%
Exposed	0	0	0	0	0	0	0	0	0	0	0		0	0%
Equipment Malfunction	0	0	0	0	1	0	0	0	1	0	1		1	16%
Framing- PD	0	0	0	0	0	0	0	0	0	0	0		0	0%
Framing of Car	1	1	0	0	1	3	2	2	0	0	3		2	30%
Framing of Driver	0	0	0	0	0	0	0	0	0	0	0		0	0%
Operator Error	0	0	0	0	0	0	0	0	0	0	0		0	0%
Framing of Plate	0	0	0	0	0	0	0	0	0	0	0		0	0%
Reject Expired	0	0	0	0	0	0	0	0	0	0	0		0	0%
Speed Not Determined	0	0	0	0	1	0	0	0	0	0	0		1	16%
Total:	2	1	1	1	4	4	2	2	4	1	7		6	100%
Summary Metrics														
Daily Average Vehicle Passes	0	0	0	0	0	0	0	0	0	0	0		0	
Average Issued Speed	19	20	17	17	17	16	17	17	21	21	19		18	
Average Issued Red Seconds	42.5	0.5	54.8	24.8	67.6	231.4	80.6	33.6	7.0	94.7	192.0		75.4	
Citation / Violation Issuance Rate	0%	17%	21%	33%	25%	0%	9%	14%	29%	42%	15%		23%	
Controllable Issuance Rate	0%	67%	75%	80%	50%	0%	33%	50%	56%	83%	30%		58%	



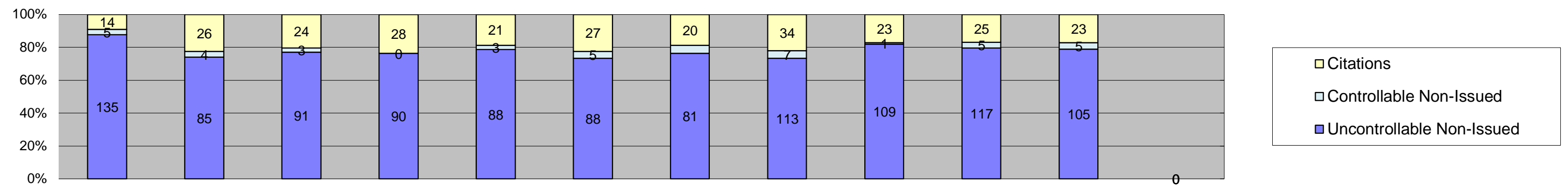
Los Angeles County MTA Expo Line
 Approach Summary Report
 Location 5079: WB to SB Exposition @ Bill Robertson



Events	Jan-18	Feb-18	Mar-18	Apr-18	May-18	Jun-18	Jul-18	Aug-18	Sep-18	Oct-18	Nov-18	Dec-18	Year to Date Monthly Average	
													Quantity	%
Non-Violations	288	266	276	315	281	312	374	305	310	329	262		302	95%
Violations	15	13	23	26	12	13	30	19	10	11	10		17	5%
Total:	303	279	299	341	293	325	404	324	320	340	272		318	100%
Violations														
Uncontrollable Non-Issued	4	9	14	10	8	12	19	12	7	4	6		10	53%
Controllable Non-Issued	2	0	2	3	0	1	3	1	0	0	0		2	11%
Citations	9	4	7	13	4	0	8	6	3	7	4		7	36%
Total:	15	13	23	26	12	13	30	19	10	11	10		18	64%
Non-Violations														
Emergency Vehicle Non-Issuable	1	1	1	3	0	2	0	0	1	1	2		2	0%
Emergency Vehicle PD	0	0	0	0	0	0	0	0	0	0	0		0	0%
Intersection Control in Progress- PD	0	0	0	0	0	0	0	0	0	0	0		0	0%
Gate Down/ No Train	0	0	0	0	0	0	0	0	0	0	0		0	0%
No Violation Occurred	95	64	76	91	75	70	56	47	78	66	48		70	22%
Rear Axle Activation	1	3	5	1	0	1	1	0	0	0	1		2	1%
Right Turn- No Violation	0	0	0	0	0	0	0	0	0	0	0		0	0%
Test Shot	191	198	194	220	206	239	317	258	231	234	195		226	70%
Train Activation	0	0	0	0	0	0	0	0	0	28	16		22	7%
Amber Time Low	0	0	0	0	0	0	0	0	0	0	0		0	0%
Vehicle Stopped- PD	0	0	0	0	0	0	0	0	0	0	0		0	0%
Total:	288	266	276	315	281	312	374	305	310	329	262		321	100%
Uncontrollable Non-Issued Violations														
Administrative Dismissal	0	0	0	0	0	0	0	0	0	0	0		0	0%
Address/CDL/DOB Match Fail	0	0	0	0	0	0	0	0	0	0	0		0	0%
Car Obstructed	0	0	1	0	0	0	1	0	0	0	0		1	5%
Conditions Beyond Control	0	0	0	0	0	0	0	0	0	0	0		0	0%
Driver Identity Unclear	0	0	0	0	0	0	0	0	0	0	0		0	0%
Driver Obstructed	0	2	2	0	2	2	0	1	0	0	0		2	9%
Exposed	0	0	0	0	0	0	0	0	0	0	0		0	0%
Emergency Vehicle Issue	0	0	0	0	0	0	1	0	0	0	0		1	5%
Glare on Plate	0	3	1	5	4	2	9	5	5	1	1		4	19%
Glare on Windshield	0	0	0	0	0	0	1	0	0	0	0		1	5%
Illegible Plate	0	0	0	0	0	0	0	0	0	0	1		1	5%
Interest of Justice- PD	0	0	0	0	0	0	0	0	0	0	0		0	0%
Image Quality- PD	0	0	0	0	0	1	0	0	0	0	1		1	5%
Issuance Criteria Not Met- PD	0	0	0	0	0	0	0	0	0	0	0		0	0%
No Warning Sign	0	0	0	0	0	0	0	0	0	0	0		0	0%
No Plate	1	2	4	3	2	3	6	4	2	3	3		3	16%
No Speed Captured	0	0	0	0	0	0	0	0	0	0	0		0	0%
Obstruction In Photo- PD	0	0	2	1	0	1	1	1	0	0	0		1	6%
Out of State	0	0	0	0	0	0	0	1	0	0	0		1	5%
Plate Obstructed	3	2	3	1	0	3	0	0	0	0	0		2	13%
Short Yellow- PD	0	0	0	0	0	0	0	0	0	0	0		0	0%
Third Party Damage	0	0	0	0	0	0	0	0	0	0	0		0	0%
TSB Epired	0	0	0	0	0	0	0	0	0	0	0		0	0%
TSB No Hit	0	0	1	0	0	0	0	0	0	0	0		1	5%
Total:	4	9	14	10	8	12	19	12	7	4	6		19	100%
Controllable Non-Issued Violations														
Conduent Expire	0	0	0	0	0	0	0	0	0	0	0		0	0%
Clarity of Plate	0	0	0	0	0	0	0	0	0	0	0		0	0%
Clarity of Driver	0	0	0	0	0	0	0	0	0	0	0		0	0%
Dark Interior	0	0	0	0	0	0	0	0	0	0	0		0	0%
Data Box Related- PD	0	0	0	0	0	0	0	0	0	0	0		0	0%
Data Box Data Error- PD	0	0	0	0	0	0	0	0	0	0	0		0	0%
Data Entry Error	0	0	0	0	0	0	0	0	0	0	0		0	0%
Exposed	0	0	0	0	0	0	0	0	0	0	0		0	0%
Equipment Malfunction	0	0	0	0	0	0	0	0	0	0	0		0	0%
Framing- PD	0	0	0	0	0	0	0	0	0	0	0		0	0%
Framing of Car	1	0	0	3	0	1	3	1	0	0	0		2	55%
Framing of Driver	0	0	0	0	0	0	0	0	0	0	0		0	0%
Operator Error	0	0	0	0	0	0	0	0	0	0	0		0	0%
Framing of Plate	0	0	0	0	0	0	0	0	0	0	0		0	0%
Reject Expired	0	0	0	0	0	0	0	0	0	0	0		0	0%
Speed Not Determined	1	0	2	0	0	0	0	0	0	0	0		2	45%
Total:	2	0	2	3	0	1	3	1	0	0	0		3	100%
Summary Metrics														
Daily Average Vehicle Passes	0	0	0	0	0	0	0	0	0	0	0		0	
Average Issued Speed	17	15	16	16	15	16	16	14	16	17	15		16	
Average Issued Red Seconds	20.0	0.4	0.8	0.6	329.8	0.3	20.5	5.6	34.1	0.3	0.7		37.6	
Citation / Violation Issuance Rate	60%	31%	30%	50%	33%	0%	27%	32%	30%	64%	40%		40%	
Controllable Issuance Rate	82%	100%	78%	81%	100%	0%	73%	86%	100%	100%	100%		90%	



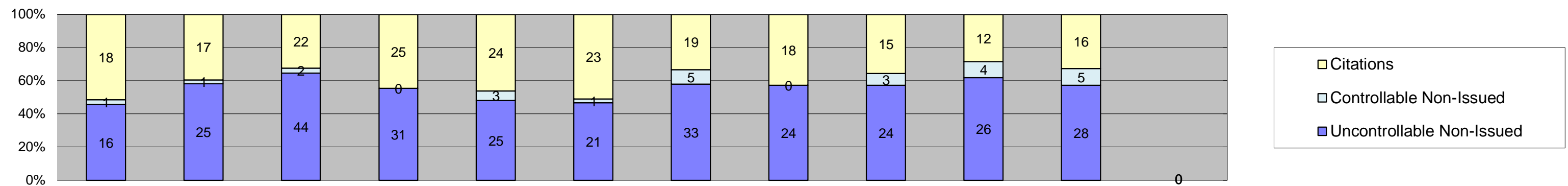
Los Angeles County MTA Expo Line
 Approach Summary Report
 Location 5087: EB to NB Exposition @ Vermont



Events	Jan-18	Feb-18	Mar-18	Apr-18	May-18	Jun-18	Jul-18	Aug-18	Sep-18	Oct-18	Nov-18	Dec-18	Year to Date Monthly Average	
													Quantity	%
Non-Violations	831	865	913	932	900	927	968	1,063	846	946	833		911	88%
Violations	154	115	118	118	112	120	106	154	133	147	133		128	12%
Total:	985	980	1,031	1,050	1,012	1,047	1,074	1,217	979	1,093	966		1,039	100%
Violations														
Uncontrollable Non-Issued	135	85	91	90	88	88	81	113	109	117	105		100	78%
Controllable Non-Issued	5	4	3	0	3	5	5	7	1	5	5		4	3%
Citations	14	26	24	28	21	27	20	34	23	25	23		24	19%
Total:	154	115	118	118	112	120	106	154	133	147	133		129	81%
Non-Violations														
Emergency Vehicle Non-Issuable	2	0	4	2	2	4	0	3	1	1	2		2	0%
Emergency Vehicle PD	0	0	0	0	0	0	0	1	0	0	0		1	0%
Intersection Control in Progress-PD	0	0	0	0	0	0	0	0	0	0	0		0	0%
Gate Down/ No Train	0	0	0	0	0	0	0	0	0	0	0		0	0%
No Violation Occurred	688	703	751	768	749	755	791	893	690	329	253		670	53%
Rear Axle Activation	3	10	8	13	4	4	5	15	15	18	14		10	1%
Right Turn- No Violation	0	0	0	0	0	0	0	0	0	0	0		0	0%
Test Shot	138	152	150	149	145	164	172	151	140	148	149		151	12%
Train Activation	0	0	0	0	0	0	0	0	0	450	415		433	34%
Amber Time Low	0	0	0	0	0	0	0	0	0	0	0		0	0%
Vehicle Stopped- PD	0	0	0	0	0	0	0	0	0	0	0		0	0%
Total:	831	865	913	932	900	927	968	1,063	846	946	833		1,266	100%
Uncontrollable Non-Issued Violations														
Administrative Dismissal	0	0	0	0	0	0	0	0	0	0	0		0	0%
Address/CDL/DOB Match Fail	0	0	0	0	0	0	0	0	0	0	0		0	0%
Car Obstructed	2	0	1	2	0	0	0	0	0	1	1		1	1%
Conditions Beyond Control	0	0	0	0	0	0	0	0	0	0	0		0	0%
Driver Identity Unclear	18	4	3	5	3	6	4	5	3	10	1		6	5%
Driver Obstructed	0	0	5	3	4	3	1	4	2	3	1		3	3%
Exposed	0	0	0	0	0	0	0	0	0	0	0		0	0%
Emergency Vehicle Issue	0	1	0	0	0	2	1	0	1	0	0		1	1%
Glare on Plate	46	48	43	51	54	40	35	50	53	46	45		46	43%
Glare on Windshield	30	12	7	14	5	9	12	25	19	32	21		17	16%
Illegible Plate	0	0	1	0	0	0	2	0	0	1	0		1	1%
Interest of Justice- PD	0	0	0	0	0	0	0	0	0	0	0		0	0%
Image Quality- PD	10	2	1	3	3	6	2	3	0	0	8		4	4%
Issuance Criteria Not Met- PD	0	0	0	0	0	0	0	0	0	0	0		0	0%
No Warning Sign	0	0	0	0	0	0	0	0	0	0	0		0	0%
No Plate	22	15	25	12	15	18	20	23	12	29	24		21	19%
No Speed Captured	0	0	0	0	0	0	0	0	0	0	0		0	0%
Obstruction In Photo- PD	3	0	0	0	0	2	1	2	1	0	1		2	2%
Out of State	2	0	2	0	0	2	1	1	1	0	1		1	1%
Plate Obstructed	2	3	2	0	4	0	2	0	0	0	0		3	2%
Short Yellow- PD	0	0	0	0	0	0	0	0	0	0	0		0	0%
Third Party Damage	0	0	0	0	0	0	0	0	0	0	0		0	0%
TSB Expired	0	0	0	0	0	0	0	0	0	0	1		1	1%
TSB No Hit	0	0	1	0	0	0	0	0	0	0	1		1	1%
Total:	135	85	91	90	88	88	81	113	109	117	105		108	100%
Controllable Non-Issued Violations														
Conduent Expire	0	0	0	0	0	0	0	0	0	0	0		0	0%
Clarity of Plate	0	0	0	0	0	0	0	0	0	0	0		0	0%
Clarity of Driver	0	0	0	0	0	0	0	0	0	0	0		0	0%
Dark Interior	1	0	0	0	0	1	1	3	0	5	1		2	25%
Data Box Related- PD	0	0	0	0	0	0	0	0	0	0	0		0	0%
Data Box Data Error- PD	0	0	0	0	0	1	0	0	0	0	0		1	12%
Data Entry Error	0	2	2	0	0	2	3	2	0	0	1		2	25%
Exposed	0	0	0	0	0	0	0	0	0	0	0		0	0%
Equipment Malfunction	0	0	0	0	0	0	0	0	0	0	0		0	0%
Framing- PD	0	0	0	0	0	0	0	0	0	0	0		0	0%
Framing of Car	2	2	1	0	2	1	0	2	1	0	3		2	22%
Framing of Driver	0	0	0	0	0	0	0	0	0	0	0		0	0%
Operator Error	0	0	0	0	0	0	0	0	0	0	0		0	0%
Framing of Plate	0	0	0	0	0	0	0	0	0	0	0		0	0%
Reject Expired	0	0	0	0	0	0	0	0	0	0	0		0	0%
Speed Not Determined	2	0	0	0	1	0	1	0	0	0	0		1	16%
Total:	5	4	3	0	3	5	5	7	1	5	5		8	100%
Summary Metrics														
Daily Average Vehicle Passes	0	0	0	0	0	0	0	0	0	0	0		0	
Average Issued Speed	19	20	20	20	20	20	20	20	20	20	20		20	
Average Issued Red Seconds	0.9	0.5	0.4	0.5	0.5	0.6	1.1	1.1	0.8	0.5	0.6		0.7	
Citation / Violation Issuance Rate	9%	23%	20%	24%	19%	23%	19%	22%	17%	17%	17%		19%	
Controllable Issuance Rate	74%	87%	89%	100%	88%	84%	80%	83%	96%	83%	82%		86%	



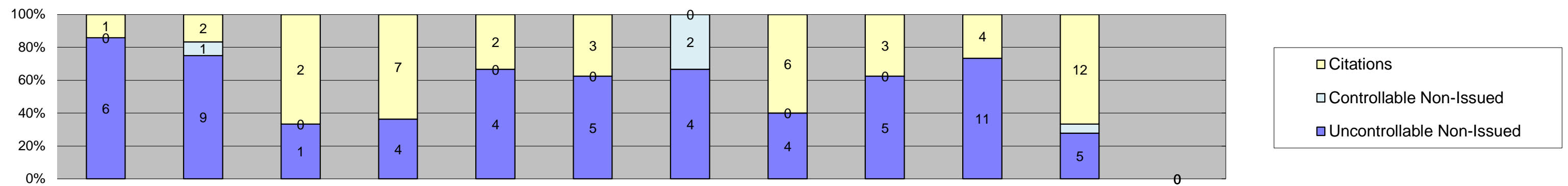
Los Angeles County MTA Expo Line
 Approach Summary Report
 Location 5089: WB to SB Exposition @ Vermont



Events	Jan-18	Feb-18	Mar-18	Apr-18	May-18	Jun-18	Jul-18	Aug-18	Sep-18	Oct-18	Nov-18	Dec-18	Year to Date Monthly Average	
													Quantity	%
Non-Violations	585	558	629	657	697	729	662	702	681	705	653		660	93%
Violations	35	43	68	56	52	45	57	42	42	42	49		48	7%
Total:	620	601	697	713	749	774	719	744	723	747	702		708	100%
Violations														
Uncontrollable Non-Issued	16	25	44	31	25	21	33	24	24	26	28		27	55%
Controllable Non-Issued	1	1	2	0	3	1	5	0	3	4	5		3	6%
Citations	18	17	22	25	24	23	19	18	15	12	16		19	39%
Total:	35	43	68	56	52	45	57	42	42	42	49		49	61%
Non-Violations														
Emergency Vehicle Non-Issuable	0	4	1	1	2	3	2	0	1	0	2		2	0%
Emergency Vehicle PD	0	0	0	0	0	0	0	0	0	0	0		0	0%
Intersection Control in Progress- PD	0	0	0	0	0	0	0	0	0	0	0		0	0%
Gate Down/ No Train	0	0	0	0	0	0	0	0	0	0	0		0	0%
No Violation Occurred	461	433	505	523	560	587	521	578	545	57	53		438	42%
Rear Axle Activation	6	4	5	3	1	2	10	5	16	12	13		7	1%
Right Turn- No Violation	0	0	0	0	0	0	0	0	0	0	0		0	0%
Test Shot	118	117	118	130	134	137	129	119	119	122	136		125	12%
Train Activation	0	0	0	0	0	0	0	0	0	514	449		482	46%
Amber Time Low	0	0	0	0	0	0	0	0	0	0	0		0	0%
Vehicle Stopped- PD	0	0	0	0	0	0	0	0	0	0	0		0	0%
Total:	585	558	629	657	697	729	662	702	681	705	653		1,054	100%
Uncontrollable Non-Issued Violations														
Administrative Dismissal	0	0	0	0	0	0	0	0	0	0	0		0	0%
Address/CDL/DOB Match Fail	0	0	0	0	0	0	0	0	0	0	0		0	0%
Car Obstructed	0	0	0	0	0	0	0	2	1	2	1		2	4%
Conditions Beyond Control	0	0	0	0	0	0	0	0	0	0	0		0	0%
Driver Identity Unclear	3	4	3	4	2	2	1	2	0	2	1		2	7%
Driver Obstructed	1	2	3	3	1	4	0	1	2	1	2		2	6%
Exposed	0	0	0	0	0	0	0	0	0	0	0		0	0%
Emergency Vehicle Issue	1	0	1	2	0	0	0	0	0	0	0		1	4%
Glare on Plate	3	7	9	7	9	4	8	5	10	10	5		7	20%
Glare on Windshield	0	0	0	1	1	1	2	1	1	0	2		1	4%
Illegible Plate	0	0	0	0	1	0	0	1	0	0	0		1	3%
Interest of Justice- PD	0	0	0	0	0	0	0	0	0	0	0		0	0%
Image Quality- PD	0	0	1	1	3	3	2	0	1	0	0		2	5%
Issuance Criteria Not Met- PD	0	0	0	0	0	0	0	0	0	0	0		0	0%
No Warning Sign	0	0	0	0	0	0	0	0	0	0	0		0	0%
No Plate	7	6	17	9	7	5	17	10	8	10	13		10	29%
No Speed Captured	0	0	0	0	0	0	0	0	0	0	0		0	0%
Obstruction In Photo- PD	1	3	2	2	0	1	1	0	0	1	1		2	4%
Out of State	0	1	1	0	0	0	0	0	0	0	0		1	3%
Plate Obstructed	0	2	5	2	1	1	2	2	1	0	2		2	6%
Short Yellow- PD	0	0	0	0	0	0	0	0	0	0	0		0	0%
Third Party Damage	0	0	0	0	0	0	0	0	0	0	0		0	0%
TSB Epired	0	0	0	0	0	0	0	0	0	0	0		0	0%
TSB No Hit	0	0	2	0	0	0	0	0	0	0	1		2	4%
Total:	16	25	44	31	25	21	33	24	24	26	28		34	100%
Controllable Non-Issued Violations														
Conduent Expire	0	0	0	0	0	0	0	0	0	0	0		0	0%
Clarity of Plate	0	0	0	0	1	0	0	0	0	0	0		1	13%
Clarity of Driver	0	0	0	0	0	0	0	0	0	0	0		0	0%
Dark Interior	0	0	0	0	0	0	0	0	1	2	4		2	30%
Data Box Related- PD	0	0	0	0	0	0	0	0	0	0	0		0	0%
Data Box Data Error- PD	0	0	0	0	0	0	0	0	0	0	0		0	0%
Data Entry Error	0	0	0	0	0	0	0	0	1	0	0		1	13%
Exposed	0	0	0	0	0	0	0	0	0	0	0		0	0%
Equipment Malfunction	1	0	0	0	0	0	0	0	0	1	0		1	13%
Framing- PD	0	0	0	0	0	0	0	0	0	0	0		0	0%
Framing of Car	0	1	1	0	1	1	4	0	1	1	1		1	18%
Framing of Driver	0	0	0	0	0	0	0	0	0	0	0		0	0%
Operator Error	0	0	0	0	0	0	0	0	0	0	0		0	0%
Framing of Plate	0	0	0	0	0	0	0	0	0	0	0		0	0%
Reject Expired	0	0	0	0	0	0	0	0	0	0	0		0	0%
Speed Not Determined	0	0	1	0	1	0	1	0	0	0	0		1	13%
Total:	1	1	2	0	3	1	5	0	3	4	5		8	100%
Summary Metrics														
Daily Average Vehicle Passes	0	0	0	0	0	0	0	0	0	0	0		0	
Average Issued Speed	18	19	19	20	20	20	20	18	19	19	18		19	
Average Issued Red Seconds	41.4	50.0	0.6	0.5	9.0	0.5	13.1	0.3	4.1	11.1	0.6		11.9	
Citation / Violation Issuance Rate	51%	40%	32%	45%	46%	51%	33%	43%	36%	29%	33%		40%	
Controllable Issuance Rate	95%	94%	92%	100%	89%	96%	79%	100%	83%	75%	76%		89%	



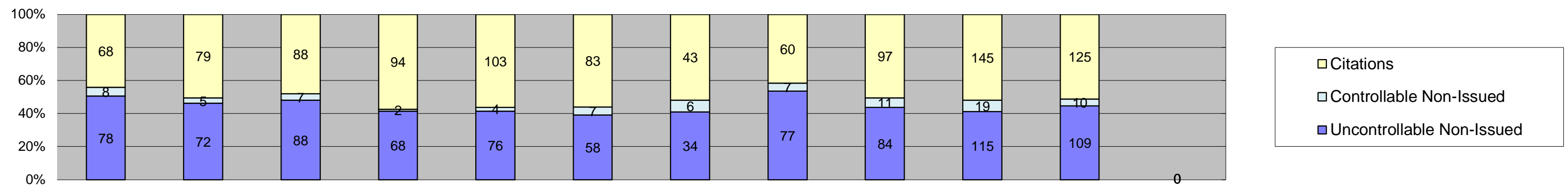
Los Angeles County MTA Expo Line
 Approach Summary Report
 Location 5097: EB to NB Exposition @ Raymond



Events	Jan-18	Feb-18	Mar-18	Apr-18	May-18	Jun-18	Jul-18	Aug-18	Sep-18	Oct-18	Nov-18	Dec-18	Year to Date Monthly Average	
													Quantity	%
Non-Violations	367	296	325	325	768	324	244	293	282	278	288		345	97%
Violations	7	12	3	11	6	8	6	10	8	15	18		9	3%
Total:	374	308	328	336	774	332	250	303	290	293	306		354	100%
Violations														
Uncontrollable Non-Issued	6	9	1	4	4	5	4	4	5	11	5		5	49%
Controllable Non-Issued	0	1	0	0	0	0	2	0	0	0	1		1	12%
Citations	1	2	2	7	2	3	0	6	3	4	12		4	39%
Total:	7	12	3	11	6	8	6	10	8	15	18		11	61%
Non-Violations														
Emergency Vehicle Non-Issuable	2	2	0	1	0	3	0	0	0	2	1		2	0%
Emergency Vehicle PD	0	0	0	0	0	0	0	0	0	0	0		0	0%
Intersection Control in Progress-PD	0	0	0	0	0	0	0	0	0	0	0		0	0%
Gate Down/ No Train	0	0	0	0	0	0	0	0	0	0	0		0	0%
No Violation Occurred	318	256	282	276	725	271	221	242	258	215	229		299	79%
Rear Axle Activation	0	1	1	1	0	0	1	0	1	1	0		1	0%
Right Turn- No Violation	0	0	0	0	0	0	0	0	0	0	0		0	0%
Test Shot	47	37	42	47	43	50	22	51	23	18	20		36	10%
Train Activation	0	0	0	0	0	0	0	0	0	42	38		40	11%
Amber Time Low	0	0	0	0	0	0	0	0	0	0	0		0	0%
Vehicle Stopped- PD	0	0	0	0	0	0	0	0	0	0	0		0	0%
Total:	367	296	325	325	768	324	244	293	282	278	288		379	100%
Uncontrollable Non-Issued Violations														
Administrative Dismissal	0	0	0	0	0	0	0	0	0	0	0		0	0%
Address/CDL/DOB Match Fail	0	0	0	0	0	0	0	0	0	0	0		0	0%
Car Obstructed	0	0	0	0	0	0	0	0	0	0	0		0	0%
Conditions Beyond Control	0	0	0	0	0	0	0	0	0	0	0		0	0%
Driver Identity Unclear	0	1	0	0	0	0	0	0	0	0	1		1	10%
Driver Obstructed	0	0	1	2	0	0	0	0	1	1	1		1	12%
Exposed	0	0	0	0	0	0	0	0	0	0	0		0	0%
Emergency Vehicle Issue	0	0	0	0	0	2	0	0	1	0	1		1	13%
Glare on Plate	0	0	0	0	0	0	0	0	0	0	0		0	0%
Glare on Windshield	0	1	0	0	0	0	0	0	0	1	0		1	10%
Illegible Plate	0	0	0	0	0	0	0	0	0	0	0		0	0%
Interest of Justice- PD	0	0	0	0	0	0	0	0	0	0	0		0	0%
Image Quality- PD	0	0	0	0	0	0	0	0	0	0	0		0	0%
Issuance Criteria Not Met- PD	0	0	0	0	0	0	0	0	0	0	0		0	0%
No Warning Sign	0	0	0	0	0	0	0	0	0	0	0		0	0%
No Plate	5	7	0	2	3	2	2	3	2	8	2		4	35%
No Speed Captured	0	0	0	0	0	0	0	0	0	0	0		0	0%
Obstruction In Photo- PD	1	0	0	0	0	0	0	0	0	1	0		1	10%
Out of State	0	0	0	0	1	1	2	1	1	0	0		1	12%
Plate Obstructed	0	0	0	0	0	0	0	0	0	0	0		0	0%
Short Yellow- PD	0	0	0	0	0	0	0	0	0	0	0		0	0%
Third Party Damage	0	0	0	0	0	0	0	0	0	0	0		0	0%
TSB Epired	0	0	0	0	0	0	0	0	0	0	0		0	0%
TSB No Hit	0	0	0	0	0	0	0	0	0	0	0		0	0%
Total:	6	9	1	4	4	5	4	4	5	11	5		10	100%
Controllable Non-Issued Violations														
Conduent Expire	0	0	0	0	0	0	0	0	0	0	0		0	0%
Clarity of Plate	0	0	0	0	0	0	0	0	0	0	0		0	0%
Clarity of Driver	0	0	0	0	0	0	0	0	0	0	0		0	0%
Dark Interior	0	0	0	0	0	0	2	0	0	0	0		2	67%
Data Box Related- PD	0	0	0	0	0	0	0	0	0	0	0		0	0%
Data Box Data Error- PD	0	0	0	0	0	0	0	0	0	0	0		0	0%
Data Entry Error	0	1	0	0	0	0	0	0	0	0	1		1	33%
Exposed	0	0	0	0	0	0	0	0	0	0	0		0	0%
Equipment Malfunction	0	0	0	0	0	0	0	0	0	0	0		0	0%
Framing- PD	0	0	0	0	0	0	0	0	0	0	0		0	0%
Framing of Car	0	0	0	0	0	0	0	0	0	0	0		0	0%
Framing of Driver	0	0	0	0	0	0	0	0	0	0	0		0	0%
Operator Error	0	0	0	0	0	0	0	0	0	0	0		0	0%
Framing of Plate	0	0	0	0	0	0	0	0	0	0	0		0	0%
Reject Expired	0	0	0	0	0	0	0	0	0	0	0		0	0%
Speed Not Determined	0	0	0	0	0	0	0	0	0	0	0		0	0%
Total:	0	1	0	0	0	0	2	0	0	0	1		3	100%
Summary Metrics														
Daily Average Vehicle Passes	0	0	0	0	0	0	0	0	0	0	0		0	
Average Issued Speed	18	16	21	18	14	17	22	17	18	16	28		19	
Average Issued Red Seconds	0.8	346.9	0.3	194.9	334.4	156.6	384.9	288.6	256.1	88.9	297.9		213.7	
Citation / Violation Issuance Rate	14%	17%	67%	64%	33%	38%	0%	60%	38%	27%	67%		42%	
Controllable Issuance Rate	100%	67%	100%	100%	100%	100%	0%	100%	100%	100%	92%		96%	



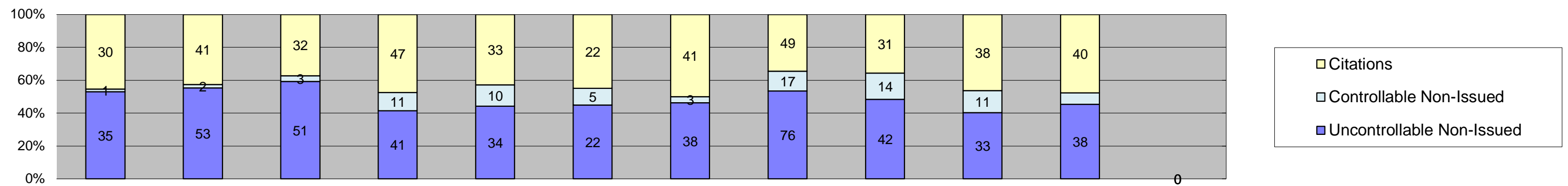
Los Angeles County MTA Expo Line
 Approach Summary Report
 Location 5107: EB to NB Exposition @ Normandie



Events	Jan-18	Feb-18	Mar-18	Apr-18	May-18	Jun-18	Jul-18	Aug-18	Sep-18	Oct-18	Nov-18	Dec-18	Year to Date Monthly Average	
													Quantity	%
Non-Violations	485	413	482	435	419	475	406	427	361	420	384		428	71%
Violations	154	156	183	164	183	148	83	144	192	279	244		175	29%
Total:	639	569	665	599	602	623	489	571	553	699	628		603	100%
Violations														
Uncontrollable Non-Issued	78	72	88	68	76	58	34	77	84	115	109		78	45%
Controllable Non-Issued	8	5	7	2	4	7	6	7	11	19	10		8	4%
Citations	68	79	88	94	103	83	43	60	97	145	125		90	51%
Total:	154	156	183	164	183	148	83	144	192	279	244		175	49%
Non-Violations														
Emergency Vehicle Non-Issuable	5	1	5	2	0	3	7	5	6	5	7		5	1%
Emergency Vehicle PD	0	0	0	0	3	0	0	0	0	0	0		3	1%
Intersection Control in Progress-PD	0	0	0	1	0	0	0	0	0	0	0		1	0%
Gate Down/ No Train	0	0	0	0	0	0	0	0	0	0	0		0	0%
No Violation Occurred	336	294	329	299	286	328	258	269	221	141	149		265	55%
Rear Axle Activation	6	3	2	3	2	7	7	21	15	39	22		12	2%
Right Turn- No Violation	0	0	0	0	0	0	0	0	0	0	0		0	0%
Test Shot	137	115	146	130	128	137	134	132	118	124	121		129	27%
Train Activation	0	0	0	0	0	0	0	0	1	111	85		66	14%
Amber Time Low	0	0	0	0	0	0	0	0	0	0	0		0	0%
Vehicle Stopped- PD	1	0	0	0	0	0	0	0	0	0	0		1	0%
Total:	485	413	482	435	419	475	406	427	361	420	384		481	100%
Uncontrollable Non-Issued Violations														
Administrative Dismissal	0	0	0	0	0	0	0	0	0	0	0		0	0%
Address/CDL/DOB Match Fail	0	0	0	0	0	0	0	0	0	0	0		0	0%
Car Obstructed	2	0	1	2	3	0	0	2	1	0	3		2	2%
Conditions Beyond Control	0	0	0	0	0	0	0	0	0	0	0		0	0%
Driver Identity Unclear	6	8	5	0	0	0	2	2	3	7	1		4	5%
Driver Obstructed	0	1	3	2	4	5	1	6	5	3	1		3	3%
Exposed	0	0	0	0	0	0	0	0	0	0	0		0	0%
Emergency Vehicle Issue	0	1	0	0	0	1	1	2	0	1	0		1	1%
Glare on Plate	35	23	22	24	25	11	9	12	23	44	35		24	27%
Glare on Windshield	2	2	1	1	1	0	1	7	5	3	6		3	3%
Illegible Plate	0	0	0	0	0	0	1	1	0	2	0		1	1%
Interest of Justice- PD	0	0	0	0	0	0	0	0	0	0	0		0	0%
Image Quality- PD	3	0	1	3	3	5	1	2	0	1	4		3	3%
Issuance Criteria Not Met- PD	0	0	0	0	0	0	0	0	0	4	1		3	3%
No Warning Sign	0	0	0	0	0	0	0	0	0	0	0		0	0%
No Plate	21	22	31	31	31	27	16	36	40	39	48		31	35%
No Speed Captured	0	0	0	0	0	0	0	0	0	0	0		0	0%
Obstruction In Photo- PD	4	7	5	4	5	4	1	0	1	4	2		4	4%
Out of State	0	2	4	0	0	2	1	2	3	4	3		3	3%
Plate Obstructed	5	6	6	1	4	3	0	5	2	3	0		4	4%
Short Yellow- PD	0	0	0	0	0	0	0	0	0	0	0		0	0%
Third Party Damage	0	0	0	0	0	0	0	0	0	0	0		0	0%
TSB Epired	0	0	0	0	0	0	0	0	0	0	0		0	0%
TSB No Hit	0	0	9	0	0	0	0	0	1	0	5		5	6%
Total:	78	72	88	68	76	58	34	77	84	115	109		90	100%
Controllable Non-Issued Violations														
Conduent Expire	0	0	0	0	0	0	0	0	0	0	0		0	0%
Clarity of Plate	0	0	0	0	0	0	0	0	0	0	0		0	0%
Clarity of Driver	0	0	0	0	0	0	0	0	0	0	0		0	0%
Dark Interior	5	0	2	1	0	1	1	0	3	10	8		4	31%
Data Box Related- PD	0	0	0	0	0	0	0	0	0	0	0		0	0%
Data Box Data Error- PD	0	0	0	0	0	0	0	0	0	0	0		0	0%
Data Entry Error	0	0	2	0	0	0	1	2	4	2	0		2	17%
Exposed	0	0	0	0	0	0	0	0	0	0	0		0	0%
Equipment Malfunction	1	0	0	0	0	0	0	1	0	0	0		1	8%
Framing- PD	0	0	0	0	0	0	0	0	0	0	0		0	0%
Framing of Car	1	4	1	1	3	5	4	4	4	7	2		3	26%
Framing of Driver	0	0	0	0	0	0	0	0	0	0	0		0	0%
Operator Error	0	0	0	0	0	0	0	0	0	0	0		0	0%
Framing of Plate	1	0	0	0	0	0	0	0	0	0	0		1	8%
Reject Expired	0	0	0	0	0	0	0	0	0	0	0		0	0%
Speed Not Determined	0	1	2	0	1	1	0	0	0	0	0		1	10%
Total:	8	5	7	2	4	7	6	7	11	19	10		13	100%
Summary Metrics														
Daily Average Vehicle Passes	0	0	0	0	0	0	0	0	0	0	0		0	
Average Issued Speed	20	21	20	21	20	21	21	20	19	20	19		20	
Average Issued Red Seconds	0.5	0.4	1.3	2.1	1.0	0.5	2.7	0.5	1.6	1.4	0.4		1.1	
Citation / Violation Issuance Rate	44%	51%	48%	57%	56%	56%	52%	42%	51%	52%	51%		51%	
Controllable Issuance Rate	89%	94%	93%	98%	96%	92%	88%	90%	90%	88%	93%		92%	



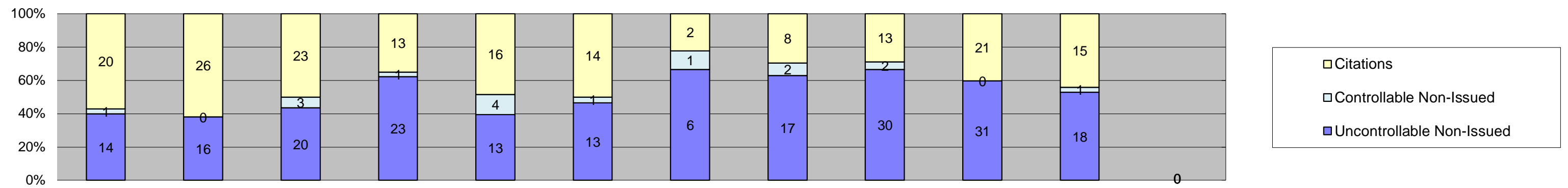
Los Angeles County MTA Expo Line
 Approach Summary Report
 Location 5109: WB to SB Exposition @ Normandie



Events	Jan-18	Feb-18	Mar-18	Apr-18	May-18	Jun-18	Jul-18	Aug-18	Sep-18	Oct-18	Nov-18	Dec-18	Year to Date Monthly Average	
													Quantity	%
Non-Violations	803	705	803	791	832	802	777	922	789	841	814		807	90%
Violations	66	96	86	99	77	49	82	142	87	82	84		86	10%
Total:	869	801	889	890	909	851	859	1,064	876	923	898		894	100%
Violations														
Uncontrollable Non-Issued	35	53	51	41	34	22	38	76	42	33	38		42	49%
Controllable Non-Issued	1	2	3	11	10	5	3	17	14	11	6		8	9%
Citations	30	41	32	47	33	22	41	49	31	38	40		37	43%
Total:	66	96	86	99	77	49	82	142	87	82	84		86	57%
Non-Violations														
Emergency Vehicle Non-Issuable	0	2	2	1	0	3	2	4	3	0	2		2	0%
Emergency Vehicle PD	0	0	0	0	0	1	0	1	0	0	0		1	0%
Intersection Control in Progress- PD	0	0	0	0	0	0	0	0	0	0	0		0	0%
Gate Down/ No Train	0	0	0	0	0	0	0	0	0	0	0		0	0%
No Violation Occurred	603	503	598	609	641	597	594	700	552	250	270		538	55%
Rear Axle Activation	12	8	6	7	3	8	7	18	20	11	12		10	1%
Right Turn- No Violation	0	0	0	0	0	0	0	0	0	0	0		0	0%
Test Shot	188	192	197	174	188	193	174	199	208	215	194		193	20%
Train Activation	0	0	0	0	0	0	0	0	6	365	336		236	24%
Amber Time Low	0	0	0	0	0	0	0	0	0	0	0		0	0%
Vehicle Stopped- PD	0	0	0	0	0	0	0	0	0	0	0		0	0%
Total:	803	705	803	791	832	802	777	922	789	841	814		980	100%
Uncontrollable Non-Issued Violations														
Administrative Dismissal	0	0	0	0	0	0	0	0	0	0	0		0	0%
Address/CDL/DOB Match Fail	0	0	0	0	0	0	0	0	0	0	0		0	0%
Car Obstructed	0	2	2	1	1	0	0	7	2	2	1		2	4%
Conditions Beyond Control	0	0	0	0	0	0	0	0	0	0	0		0	0%
Driver Identity Unclear	1	4	1	2	0	1	3	2	0	0	0		2	4%
Driver Obstructed	1	2	3	3	0	1	4	7	2	2	3		3	5%
Exposed	0	0	0	0	0	0	0	0	0	0	0		0	0%
Emergency Vehicle Issue	0	2	1	1	1	0	0	0	0	0	0		1	2%
Glare on Plate	12	16	12	12	14	8	11	18	11	7	15		12	24%
Glare on Windshield	0	0	1	0	0	2	4	6	1	0	0		3	5%
Illegible Plate	0	0	0	0	0	0	0	0	0	0	0		0	0%
Interest of Justice- PD	0	0	0	0	0	0	0	0	0	0	0		0	0%
Image Quality- PD	1	0	0	0	0	0	0	2	0	0	1		1	3%
Issuance Criteria Not Met- PD	0	0	0	0	0	0	0	0	0	1	0		1	2%
No Warning Sign	0	0	0	0	0	0	0	0	0	0	0		0	0%
No Plate	12	18	21	19	13	8	11	19	18	17	15		16	30%
No Speed Captured	0	0	0	0	0	0	0	0	0	0	0		0	0%
Obstruction In Photo- PD	3	4	1	0	0	1	1	5	0	0	0		3	5%
Out of State	1	1	3	0	1	0	3	8	2	0	0		3	5%
Plate Obstructed	4	3	4	3	4	1	1	2	4	3	2		3	5%
Short Yellow- PD	0	0	0	0	0	0	0	0	0	0	0		0	0%
Third Party Damage	0	0	0	0	0	0	0	0	0	0	0		0	0%
TSB Expired	0	1	0	0	0	0	0	0	2	1	0		1	3%
TSB No Hit	0	0	2	0	0	0	0	0	0	0	1		2	3%
Total:	35	53	51	41	34	22	38	76	42	33	38		52	100%
Controllable Non-Issued Violations														
Conduent Expire	0	0	0	0	0	0	0	0	0	0	0		0	0%
Clarity of Plate	0	0	0	0	0	0	0	0	0	0	0		0	0%
Clarity of Driver	0	0	0	0	0	0	0	0	0	0	0		0	0%
Dark Interior	0	1	0	2	0	0	0	1	2	3	1		2	11%
Data Box Related- PD	0	0	0	0	0	0	0	0	0	0	0		0	0%
Data Box Data Error- PD	0	0	0	0	0	0	0	0	0	0	0		0	0%
Data Entry Error	0	1	1	1	1	0	0	2	1	0	0		1	8%
Exposed	0	0	0	0	0	0	0	0	0	0	0		0	0%
Equipment Malfunction	0	0	0	0	0	0	0	0	0	2	0		2	13%
Framing- PD	0	0	0	0	0	0	0	0	0	0	0		0	0%
Framing of Car	1	0	2	8	9	5	3	11	10	6	5		6	40%
Framing of Driver	0	0	0	0	0	0	0	3	0	0	0		3	20%
Operator Error	0	0	0	0	0	0	0	0	0	0	0		0	0%
Framing of Plate	0	0	0	0	0	0	0	0	0	0	0		0	0%
Reject Expired	0	0	0	0	0	0	0	0	1	0	0		1	7%
Speed Not Determined	0	0	0	0	0	0	0	0	0	0	0		0	0%
Total:	1	2	3	11	10	5	3	17	14	11	6		15	100%
Summary Metrics														
Daily Average Vehicle Passes	0	0	0	0	0	0	0	0	0	0	0		0	
Average Issued Speed	20	22	22	21	21	22	21	19	20	20	21		21	
Average Issued Red Seconds	5.5	0.5	0.4	2.3	0.5	0.6	2.0	0.6	1.2	0.5	0.5		1.3	
Citation / Violation Issuance Rate	45%	43%	37%	47%	43%	45%	50%	35%	36%	46%	48%		43%	
Controllable Issuance Rate	97%	95%	91%	81%	77%	81%	93%	74%	69%	78%	87%		84%	



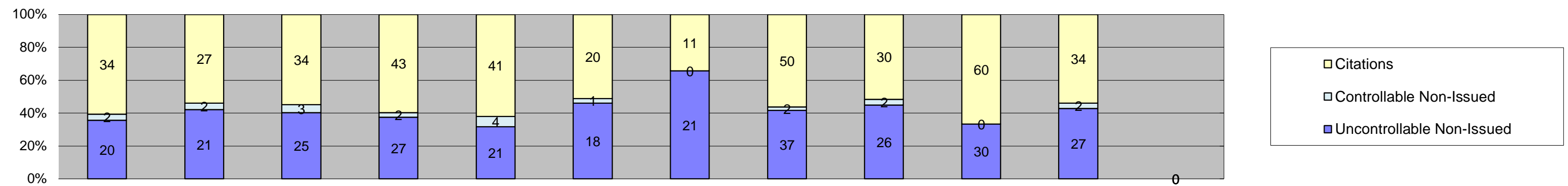
Los Angeles County MTA Expo Line
 Approach Summary Report
 Location 5117: EB to NB Exposition @ Halldale



Events	Jan-18	Feb-18	Mar-18	Apr-18	May-18	Jun-18	Jul-18	Aug-18	Sep-18	Oct-18	Nov-18	Dec-18	Year to Date Monthly Average	
													Quantity	%
Non-Violations	616	585	642	537	642	541	457	485	408	421	301		512	94%
Violations	35	42	46	37	33	28	9	27	45	52	34		35	6%
Total:	651	627	688	574	675	569	466	512	453	473	335		548	100%
Violations														
Uncontrollable Non-Issued	14	16	20	23	13	13	6	17	30	31	18		18	51%
Controllable Non-Issued	1	0	3	1	4	1	1	2	2	0	1		2	5%
Citations	20	26	23	13	16	14	2	8	13	21	15		16	44%
Total:	35	42	46	37	33	28	9	27	45	52	34		36	56%
Non-Violations														
Emergency Vehicle Non-Issuable	2	1	0	2	3	1	1	0	5	0	1		2	0%
Emergency Vehicle PD	0	0	0	0	0	0	0	0	0	0	0		0	0%
Intersection Control in Progress- PD	0	0	0	0	0	0	0	0	0	0	0		0	0%
Gate Down/ No Train	0	0	0	0	0	0	0	0	0	0	0		0	0%
No Violation Occurred	487	456	499	402	494	403	334	352	271	241	161		373	69%
Rear Axle Activation	0	3	2	0	1	0	1	0	1	0	0		2	0%
Right Turn- No Violation	0	0	0	0	0	0	0	0	0	0	0		0	0%
Test Shot	127	124	141	133	144	137	121	133	123	122	111		129	24%
Train Activation	0	0	0	0	0	0	0	0	8	58	28		31	6%
Amber Time Low	0	0	0	0	0	0	0	0	0	0	0		0	0%
Vehicle Stopped- PD	0	1	0	0	0	0	0	0	0	0	0		1	0%
Total:	616	585	642	537	642	541	457	485	408	421	301		537	100%
Uncontrollable Non-Issued Violations														
Administrative Dismissal	0	0	0	0	0	0	0	0	0	0	0		0	0%
Address/CDL/DOB Match Fail	0	0	0	0	0	0	0	0	0	0	0		0	0%
Car Obstructed	1	3	5	3	0	1	0	1	6	4	2		3	10%
Conditions Beyond Control	0	0	0	0	0	0	0	0	0	0	0		0	0%
Driver Identity Unclear	1	3	0	0	0	0	0	0	0	3	0		2	8%
Driver Obstructed	0	0	0	2	1	1	0	1	1	1	1		1	4%
Exposed	0	0	0	0	0	0	0	0	0	0	0		0	0%
Emergency Vehicle Issue	1	0	1	0	1	0	0	1	1	1	0		1	3%
Glare on Plate	1	1	0	3	1	2	0	1	4	2	0		2	6%
Glare on Windshield	0	0	0	1	0	1	0	1	0	1	0		1	3%
Illegible Plate	1	1	0	0	0	0	0	1	0	1	2		1	4%
Interest of Justice- PD	0	0	0	0	0	0	0	0	0	0	0		0	0%
Image Quality- PD	0	0	0	1	0	0	0	0	0	0	0		1	3%
Issuance Criteria Not Met- PD	0	0	0	0	0	0	0	0	0	1	0		1	3%
No Warning Sign	0	0	0	0	0	0	0	0	0	0	0		0	0%
No Plate	6	4	9	6	3	4	5	7	10	10	9		7	23%
No Speed Captured	0	0	0	0	0	0	0	0	0	0	0		0	0%
Obstruction In Photo- PD	2	2	1	4	1	1	0	1	1	0	0		2	6%
Out of State	0	1	0	0	0	1	1	0	1	0	1		1	3%
Plate Obstructed	1	1	1	3	6	2	0	2	3	6	1		3	9%
Short Yellow- PD	0	0	0	0	0	0	0	0	0	0	0		0	0%
Third Party Damage	0	0	0	0	0	0	0	0	0	0	0		0	0%
TSB Expired	0	0	0	0	0	0	0	1	3	1	0		2	6%
TSB No Hit	0	0	3	0	0	0	0	0	0	0	2		3	8%
Total:	14	16	20	23	13	13	6	17	30	31	18		29	100%
Controllable Non-Issued Violations														
Conduent Expire	0	0	0	0	0	0	0	0	0	0	0		0	0%
Clarity of Plate	0	0	0	0	1	0	0	0	0	0	0		1	19%
Clarity of Driver	0	0	0	0	0	0	0	0	0	0	0		0	0%
Dark Interior	1	0	1	1	2	0	1	1	2	0	1		1	24%
Data Box Related- PD	0	0	0	0	0	0	0	0	0	0	0		0	0%
Data Box Data Error- PD	0	0	0	0	0	0	0	0	0	0	0		0	0%
Data Entry Error	0	0	1	0	1	0	0	1	0	0	0		1	19%
Exposed	0	0	0	0	0	0	0	0	0	0	0		0	0%
Equipment Malfunction	0	0	0	0	0	1	0	0	0	0	0		1	19%
Framing- PD	0	0	0	0	0	0	0	0	0	0	0		0	0%
Framing of Car	0	0	1	0	0	0	0	0	0	0	0		1	19%
Framing of Driver	0	0	0	0	0	0	0	0	0	0	0		0	0%
Operator Error	0	0	0	0	0	0	0	0	0	0	0		0	0%
Framing of Plate	0	0	0	0	0	0	0	0	0	0	0		0	0%
Reject Expired	0	0	0	0	0	0	0	0	0	0	0		0	0%
Speed Not Determined	0	0	0	0	0	0	0	0	0	0	0		0	0%
Total:	1	0	3	1	4	1	1	2	2	0	1		5	100%
Summary Metrics														
Daily Average Vehicle Passes	0	0	0	0	0	0	0	0	0	0	0		0	
Average Issued Speed	16	17	18	17	17	16	17	17	17	17	16		17	
Average Issued Red Seconds	64.8	15.4	28.3	154.4	101.9	47.5	115.4	16.2	47.1	29.7	10.4		57.4	
Citation / Violation Issuance Rate	57%	62%	50%	35%	48%	50%	22%	30%	29%	40%	44%		43%	
Controllable Issuance Rate	95%	100%	88%	93%	80%	93%	67%	80%	87%	100%	94%		89%	



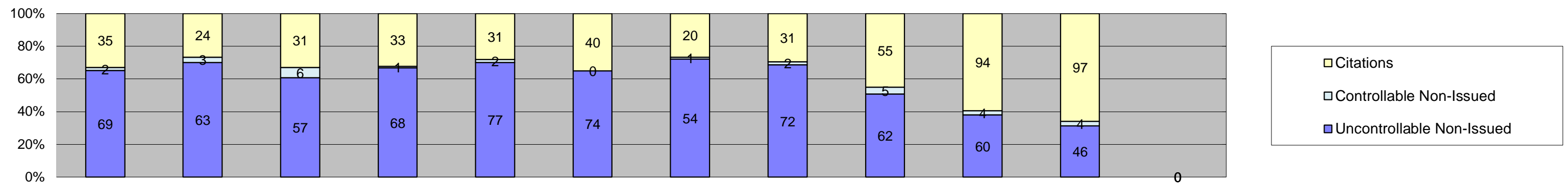
Los Angeles County MTA Expo Line
 Approach Summary Report
 Location 5119: WB to SB Exposition @ Denker



Events	Jan-18	Feb-18	Mar-18	Apr-18	May-18	Jun-18	Jul-18	Aug-18	Sep-18	Oct-18	Nov-18	Dec-18	Year to Date Monthly Average	
													Quantity	%
Non-Violations	372	347	399	404	396	407	376	382	356	396	335		379	86%
Violations	56	50	62	72	66	39	32	89	58	90	63		62	14%
Total:	428	397	461	476	462	446	408	471	414	486	398		441	100%
Violations														
Uncontrollable Non-Issued	20	21	25	27	21	18	21	37	26	30	27		25	40%
Controllable Non-Issued	2	2	3	2	4	1	0	2	2	0	2		2	4%
Citations	34	27	34	43	41	20	11	50	30	60	34		35	56%
Total:	56	50	62	72	66	39	32	89	58	90	63		62	44%
Non-Violations														
Emergency Vehicle Non-Issuable	1	0	0	3	5	1	2	1	0	2	0		2	1%
Emergency Vehicle PD	0	0	0	0	0	0	1	0	0	0	0		1	0%
Intersection Control in Progress-PD	0	0	0	0	0	0	0	0	0	0	0		0	0%
Gate Down/ No Train	0	0	0	0	0	0	0	0	0	0	0		0	0%
No Violation Occurred	217	207	242	251	230	235	229	231	198	176	136		214	52%
Rear Axle Activation	12	12	13	18	9	8	8	13	13	16	16		13	3%
Right Turn- No Violation	0	0	0	0	0	0	0	0	0	0	0		0	0%
Test Shot	142	128	144	132	152	163	136	137	139	143	133		141	34%
Train Activation	0	0	0	0	0	0	0	0	6	59	50		38	9%
Amber Time Low	0	0	0	0	0	0	0	0	0	0	0		0	0%
Vehicle Stopped- PD	0	0	0	0	0	0	0	0	0	0	0		0	0%
Total:	372	347	399	404	396	407	376	382	356	396	335		409	100%
Uncontrollable Non-Issued Violations														
Administrative Dismissal	0	0	0	0	0	0	0	0	0	0	0		0	0%
Address/CDL/DOB Match Fail	0	0	0	0	0	0	0	0	0	0	0		0	0%
Car Obstructed	0	0	0	2	0	0	0	1	0	1	1		1	4%
Conditions Beyond Control	0	0	0	0	0	0	0	0	0	0	0		0	0%
Driver Identity Unclear	2	0	1	0	1	0	0	0	0	2	0		2	4%
Driver Obstructed	1	0	0	0	0	0	0	1	0	0	1		1	3%
Exposed	0	0	0	0	0	0	0	0	0	0	0		0	0%
Emergency Vehicle Issue	2	2	1	3	0	2	0	2	5	3	2		2	7%
Glare on Plate	2	7	5	12	6	6	6	9	10	3	8		7	20%
Glare on Windshield	0	0	0	0	0	0	0	0	0	0	0		0	0%
Illegible Plate	1	0	0	1	0	0	1	1	0	3	0		1	4%
Interest of Justice- PD	0	0	0	0	0	0	0	0	0	0	0		0	0%
Image Quality- PD	0	0	0	0	0	0	0	0	0	0	1		1	3%
Issuance Criteria Not Met- PD	0	0	0	0	0	0	0	0	0	0	0		0	0%
No Warning Sign	0	0	0	0	0	0	0	0	0	0	0		0	0%
No Plate	9	8	14	8	13	10	12	17	10	16	10		12	34%
No Speed Captured	0	0	0	0	0	0	0	0	0	0	0		0	0%
Obstruction In Photo- PD	1	3	2	0	0	0	0	1	0	0	0		2	5%
Out of State	0	0	0	0	0	0	2	0	0	1	1		1	4%
Plate Obstructed	2	1	1	1	1	0	0	5	1	1	0		2	5%
Short Yellow- PD	0	0	0	0	0	0	0	0	0	0	0		0	0%
Third Party Damage	0	0	0	0	0	0	0	0	0	0	0		0	0%
TSB Epired	0	0	0	0	0	0	0	0	0	0	0		0	0%
TSB No Hit	0	0	1	0	0	0	0	0	0	0	3		2	6%
Total:	20	21	25	27	21	18	21	37	26	30	27		34	100%
Controllable Non-Issued Violations														
Conduent Expire	0	0	0	0	0	0	0	0	0	0	0		0	0%
Clarity of Plate	0	0	0	0	0	0	0	0	0	0	0		0	0%
Clarity of Driver	0	0	0	0	0	0	0	0	0	0	0		0	0%
Dark Interior	1	2	2	1	1	0	0	1	1	0	2		1	24%
Data Box Related- PD	0	0	0	0	0	0	0	0	0	0	0		0	0%
Data Box Data Error- PD	0	0	0	0	0	0	0	0	0	0	0		0	0%
Data Entry Error	0	0	0	0	0	0	0	1	0	0	0		1	18%
Exposed	0	0	0	0	0	0	0	0	0	0	0		0	0%
Equipment Malfunction	0	0	0	0	0	0	0	0	0	0	0		0	0%
Framing- PD	0	0	0	0	0	0	0	0	0	0	0		0	0%
Framing of Car	0	0	0	1	1	1	0	0	0	0	0		1	18%
Framing of Driver	0	0	0	0	0	0	0	0	0	0	0		0	0%
Operator Error	0	0	0	0	0	0	0	0	0	0	0		0	0%
Framing of Plate	0	0	0	0	0	0	0	0	0	0	0		0	0%
Reject Expired	0	0	0	0	0	0	0	0	1	0	0		1	18%
Speed Not Determined	1	0	1	0	2	0	0	0	0	0	0		1	23%
Total:	2	2	3	2	4	1	0	2	2	0	2		6	100%
Summary Metrics														
Daily Average Vehicle Passes	0	0	0	0	0	0	0	0	0	0	0		0	
Average Issued Speed	18	17	17	18	19	18	18	17	17	16	17		17	
Average Issued Red Seconds	2.7	11.5	7.6	5.4	16.0	28.3	38.1	14.5	6.2	18.1	7.9		14.2	
Citation / Violation Issuance Rate	61%	54%	55%	60%	62%	51%	34%	56%	52%	67%	54%		55%	
Controllable Issuance Rate	94%	93%	92%	96%	91%	95%	100%	96%	94%	100%	94%		95%	



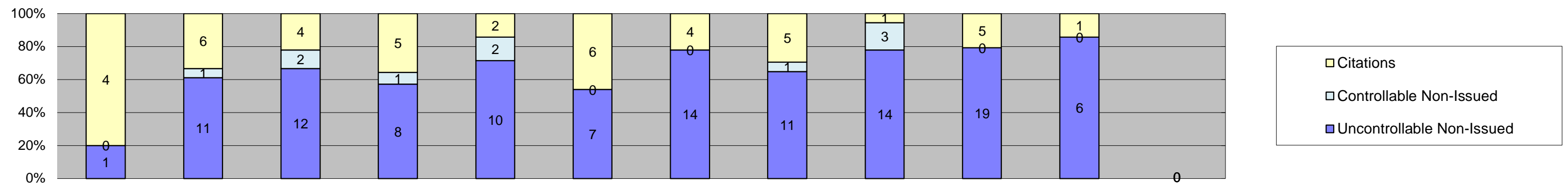
Los Angeles County MTA Expo Line
 Approach Summary Report
 Location 5127: EB to NB Exposition @ Western



Events	Jan-18	Feb-18	Mar-18	Apr-18	May-18	Jun-18	Jul-18	Aug-18	Sep-18	Oct-18	Nov-18	Dec-18	Year to Date Monthly Average	
													Quantity	%
Non-Violations	450	402	462	407	401	404	377	422	400	402	384		410	79%
Violations	106	90	94	102	110	114	75	105	122	158	147		111	21%
Total:	556	492	556	509	511	518	452	527	522	560	531		521	100%
Violations														
Uncontrollable Non-Issued	69	63	57	68	77	74	54	72	62	60	46		64	57%
Controllable Non-Issued	2	3	6	1	2	0	1	2	5	4	4		3	3%
Citations	35	24	31	33	31	40	20	31	55	94	97		45	40%
Total:	106	90	94	102	110	114	75	105	122	158	147		111	60%
Non-Violations														
Emergency Vehicle Non-Issuable	2	1	1	0	5	3	2	1	2	1	2		2	0%
Emergency Vehicle PD	0	0	0	0	0	0	0	0	0	0	0		0	0%
Intersection Control in Progress-PD	0	0	0	0	0	0	0	0	0	0	0		0	0%
Gate Down/ No Train	0	0	0	0	0	0	0	0	0	0	0		0	0%
No Violation Occurred	285	249	305	260	249	265	250	257	197	97	62		225	46%
Rear Axle Activation	19	14	13	21	13	12	7	19	36	16	27		18	4%
Right Turn- No Violation	0	0	0	0	0	0	0	0	0	0	0		0	0%
Test Shot	144	138	143	126	134	124	118	145	146	127	141		135	28%
Train Activation	0	0	0	0	0	0	0	0	19	161	152		111	23%
Amber Time Low	0	0	0	0	0	0	0	0	0	0	0		0	0%
Vehicle Stopped- PD	0	0	0	0	0	0	0	0	0	0	0		0	0%
Total:	450	402	462	407	401	404	377	422	400	402	384		491	100%
Uncontrollable Non-Issued Violations														
Administrative Dismissal	0	0	0	0	0	0	0	1	0	0	0		1	1%
Address/CDL/DOB Match Fail	0	0	0	0	0	0	0	0	0	0	0		0	0%
Car Obstructed	1	0	0	0	1	1	0	0	2	5	3		2	3%
Conditions Beyond Control	0	0	0	0	0	0	0	0	0	0	0		0	0%
Driver Identity Unclear	4	4	0	0	1	0	0	0	3	7	1		3	4%
Driver Obstructed	0	2	0	0	0	3	0	0	2	2	0		2	3%
Exposed	0	0	0	0	0	0	0	0	0	0	0		0	0%
Emergency Vehicle Issue	0	0	0	0	0	0	0	1	1	0	1		1	1%
Glare on Plate	39	34	24	41	48	41	32	32	13	2	9		29	33%
Glare on Windshield	0	1	0	2	0	0	0	0	0	0	4		2	3%
Illegible Plate	0	0	0	0	1	0	1	2	0	2	1		1	2%
Interest of Justice- PD	0	1	0	0	0	0	0	0	0	0	0		1	1%
Image Quality- PD	0	0	0	0	0	0	0	0	0	0	3		3	3%
Issuance Criteria Not Met- PD	0	0	0	0	0	0	0	0	0	1	0		1	1%
No Warning Sign	0	0	0	0	0	0	0	0	0	0	0		0	0%
No Plate	16	19	24	19	23	24	20	30	27	34	21		23	27%
No Speed Captured	0	0	0	0	0	0	0	0	0	0	0		0	0%
Obstruction In Photo- PD	1	0	0	1	1	1	0	3	2	3	0		2	2%
Out of State	2	0	1	0	1	1	0	1	1	3	0		1	2%
Plate Obstructed	6	2	5	5	1	3	1	2	4	1	1		3	3%
Short Yellow- PD	0	0	0	0	0	0	0	0	0	0	0		0	0%
Third Party Damage	0	0	0	0	0	0	0	0	0	0	0		0	0%
TSB Expired	0	0	0	0	0	0	0	0	7	0	0		7	8%
TSB No Hit	0	0	3	0	0	0	0	0	0	0	2		3	3%
Total:	69	63	57	68	77	74	54	72	62	60	46		86	100%
Controllable Non-Issued Violations														
Conduent Expire	0	0	0	0	0	0	0	0	0	0	0		0	0%
Clarity of Plate	0	0	0	0	0	0	0	0	0	0	0		0	0%
Clarity of Driver	0	0	0	0	0	0	0	0	0	0	0		0	0%
Dark Interior	0	1	0	0	1	0	0	0	3	3	2		2	29%
Data Box Related- PD	0	0	0	0	0	0	0	0	0	0	0		0	0%
Data Box Data Error- PD	0	0	0	0	0	0	0	0	0	0	0		0	0%
Data Entry Error	1	2	5	0	0	0	0	2	1	0	1		2	29%
Exposed	0	0	0	0	0	0	0	0	0	0	0		0	0%
Equipment Malfunction	0	0	0	0	0	0	0	0	1	1	1		1	14%
Framing- PD	0	0	0	0	0	0	0	0	0	0	0		0	0%
Framing of Car	0	0	0	1	1	0	1	0	0	0	0		1	14%
Framing of Driver	0	0	0	0	0	0	0	0	0	0	0		0	0%
Operator Error	0	0	0	0	0	0	0	0	0	0	0		0	0%
Framing of Plate	0	0	0	0	0	0	0	0	0	0	0		0	0%
Reject Expired	0	0	0	0	0	0	0	0	0	0	0		0	0%
Speed Not Determined	1	0	1	0	0	0	0	0	0	0	0		1	14%
Total:	2	3	6	1	2	0	1	2	5	4	4		7	100%
Summary Metrics														
Daily Average Vehicle Passes	0	0	0	0	0	0	0	0	0	0	0		0	
Average Issued Speed	19	20	19	20	20	19	20	19	19	19	19		19	
Average Issued Red Seconds	0.6	0.3	0.4	0.3	0.3	0.3	0.5	0.4	2.8	0.5	0.4		0.6	
Citation / Violation Issuance Rate	33%	27%	33%	32%	28%	35%	27%	30%	45%	59%	66%		38%	
Controllable Issuance Rate	95%	89%	84%	97%	94%	100%	95%	94%	92%	96%	96%		94%	



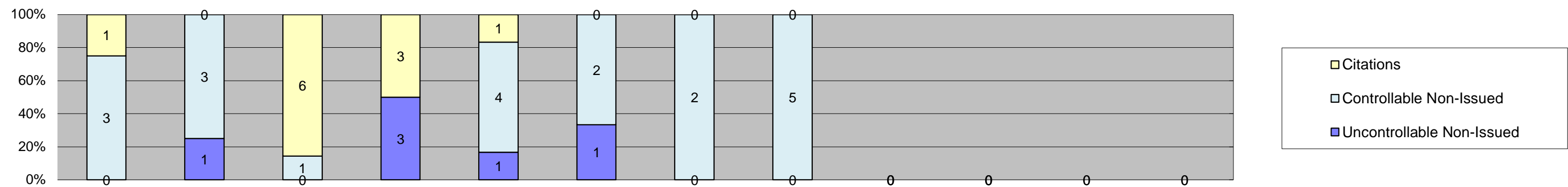
Los Angeles County MTA Expo Line
 Approach Summary Report
 Location 5129: WB to SB Exposition @ Western



Events	Jan-18	Feb-18	Mar-18	Apr-18	May-18	Jun-18	Jul-18	Aug-18	Sep-18	Oct-18	Nov-18	Dec-18	Year to Date Monthly Average	
	Quantity												Quantity	%
Non-Violations	674	690	677	661	692	610	529	591	563	548	481		611	98%
Violations	5	18	18	14	14	13	18	17	18	24	7		15	2%
Total:	679	708	695	675	706	623	547	608	581	572	488		626	100%
Violations														
Uncontrollable Non-Issued	1	11	12	8	10	7	14	11	14	19	6		10	65%
Controllable Non-Issued	0	1	2	1	2	0	0	1	3	0	0		2	11%
Citations	4	6	4	5	2	6	4	5	1	5	1		4	25%
Total:	5	18	18	14	14	13	18	17	18	24	7		16	75%
Non-Violations														
Emergency Vehicle Non-Issuable	0	0	4	0	1	2	1	0	1	0	3		2	0%
Emergency Vehicle PD	0	0	0	0	0	0	0	0	0	0	0		0	0%
Intersection Control in Progress- PD	0	0	0	0	0	0	0	0	0	0	0		0	0%
Gate Down/ No Train	0	0	0	0	0	0	0	0	0	0	0		0	0%
No Violation Occurred	499	540	516	509	517	454	380	423	402	280	229		432	65%
Rear Axle Activation	18	5	9	10	7	11	11	18	16	9	13		12	2%
Right Turn- No Violation	0	0	0	0	0	0	0	0	0	0	0		0	0%
Test Shot	156	145	148	142	167	143	137	150	134	138	132		145	22%
Train Activation	0	0	0	0	0	0	0	0	10	121	104		78	12%
Amber Time Low	0	0	0	0	0	0	0	0	0	0	0		0	0%
Vehicle Stopped- PD	1	0	0	0	0	0	0	0	0	0	0		1	0%
Total:	674	690	677	661	692	610	529	591	563	548	481		669	100%
Uncontrollable Non-Issued Violations														
Administrative Dismissal	0	0	0	0	0	0	0	0	0	0	0		0	0%
Address/CDL/DOB Match Fail	0	0	0	0	0	0	0	0	0	0	0		0	0%
Car Obstructed	0	0	0	0	0	0	0	0	0	4	0		4	18%
Conditions Beyond Control	0	0	0	0	0	0	0	0	0	0	0		0	0%
Driver Identity Unclear	0	1	0	0	0	0	0	0	0	0	0		1	4%
Driver Obstructed	0	1	0	0	0	0	0	0	0	0	0		1	4%
Exposed	0	0	0	0	0	0	0	0	0	0	0		0	0%
Emergency Vehicle Issue	0	0	0	0	0	0	0	0	0	0	0		0	0%
Glare on Plate	0	1	7	5	6	5	1	1	5	3	1		4	16%
Glare on Windshield	0	0	0	0	0	0	0	0	0	0	0		0	0%
Illegible Plate	0	0	0	0	0	0	2	0	0	0	0		2	9%
Interest of Justice- PD	0	0	0	0	0	0	0	0	0	0	0		0	0%
Image Quality- PD	0	0	0	0	0	0	0	0	0	0	0		0	0%
Issuance Criteria Not Met- PD	0	0	0	0	0	0	0	0	0	0	0		0	0%
No Warning Sign	0	0	0	0	0	0	0	0	0	0	0		0	0%
No Plate	1	8	2	2	4	2	10	10	8	11	5		6	26%
No Speed Captured	0	0	0	0	0	0	0	0	0	0	0		0	0%
Obstruction In Photo- PD	0	0	0	0	0	0	0	0	0	0	0		0	0%
Out of State	0	0	1	0	0	0	1	0	0	0	0		1	4%
Plate Obstructed	0	0	0	1	0	0	0	0	1	0	0		1	4%
Short Yellow- PD	0	0	0	0	0	0	0	0	0	0	0		0	0%
Third Party Damage	0	0	0	0	0	0	0	0	0	0	0		0	0%
TSB Expired	0	0	0	0	0	0	0	0	0	1	0		1	4%
TSB No Hit	0	0	2	0	0	0	0	0	0	0	0		2	9%
Total:	1	11	12	8	10	7	14	11	14	19	6		22	100%
Controllable Non-Issued Violations														
Conduent Expire	0	0	0	0	0	0	0	0	0	0	0		0	0%
Clarity of Plate	0	0	0	0	0	0	0	0	0	0	0		0	0%
Clarity of Driver	0	0	0	0	0	0	0	0	0	0	0		0	0%
Dark Interior	0	0	1	0	0	0	0	0	0	0	0		1	30%
Data Box Related- PD	0	0	0	0	0	0	0	0	0	0	0		0	0%
Data Box Data Error- PD	0	0	0	0	0	0	0	0	0	0	0		0	0%
Data Entry Error	0	1	1	1	1	0	0	1	3	0	0		1	40%
Exposed	0	0	0	0	0	0	0	0	0	0	0		0	0%
Equipment Malfunction	0	0	0	0	0	0	0	0	0	0	0		0	0%
Framing- PD	0	0	0	0	0	0	0	0	0	0	0		0	0%
Framing of Car	0	0	0	0	1	0	0	0	0	0	0		1	30%
Framing of Driver	0	0	0	0	0	0	0	0	0	0	0		0	0%
Operator Error	0	0	0	0	0	0	0	0	0	0	0		0	0%
Framing of Plate	0	0	0	0	0	0	0	0	0	0	0		0	0%
Reject Expired	0	0	0	0	0	0	0	0	0	0	0		0	0%
Speed Not Determined	0	0	0	0	0	0	0	0	0	0	0		0	0%
Total:	0	1	2	1	2	0	0	1	3	0	0		3	100%
Summary Metrics														
Daily Average Vehicle Passes	0	0	0	0	0	0	0	0	0	0	0		0	
Average Issued Speed	19	23	21	19	16	17	21	20	17	19	23		20	
Average Issued Red Seconds	0.4	109.5	0.7	18.4	0.2	0.7	0.4	0.6	0.7	0.5	0.4		12.0	
Citation / Violation Issuance Rate	80%	33%	22%	36%	14%	46%	22%	29%	6%	21%	14%		29%	
Controllable Issuance Rate	100%	86%	67%	83%	50%	100%	100%	83%	25%	100%	100%		81%	



Los Angeles County MTA Expo Line
 Approach Summary Report
 Location 5137: EB to SB Exposition @ Crenshaw



Events	Jan-18	Feb-18	Mar-18	Apr-18	May-18	Jun-18	Jul-18	Aug-18	Sep-18	Oct-18	Nov-18	Dec-18	Year to Date Monthly Average	
													Quantity	%
Non-Violations	482	390	479	434	403	253	177	248	37	0	0	0	323	99%
Violations	4	4	7	6	6	3	2	5	0	0	0	0	5	1%
Total:	486	394	486	440	409	256	179	253	37	0	0	0	327	100%
Violations														
Uncontrollable Non-Issued	0	1	0	3	1	1	0	0	0	0	0	0	2	21%
Controllable Non-Issued	3	3	1	0	4	2	2	5	0	0	0	0	3	40%
Citations	1	0	6	3	1	0	0	0	0	0	0	0	3	39%
Total:	4	4	7	6	6	3	2	5	0	0	0	0	7	61%
Non-Violations														
Emergency Vehicle Non-Issuable	0	0	0	0	0	0	0	0	0	0	0	0	0	0%
Emergency Vehicle PD	0	0	0	0	0	0	0	0	0	0	0	0	0	0%
Intersection Control in Progress- PD	0	0	0	0	0	0	0	0	0	0	0	0	0	0%
Gate Down/ No Train	0	0	0	0	0	0	0	0	0	0	0	0	0	0%
No Violation Occurred	460	377	460	411	379	236	164	227	31	0	0	0	305	95%
Rear Axle Activation	0	0	0	0	0	0	0	0	0	0	0	0	0	0%
Right Turn- No Violation	0	0	0	0	0	0	0	0	0	0	0	0	0	0%
Test Shot	22	13	19	23	24	17	13	21	6	0	0	0	18	5%
Train Activation	0	0	0	0	0	0	0	0	0	0	0	0	0	0%
Amber Time Low	0	0	0	0	0	0	0	0	0	0	0	0	0	0%
Vehicle Stopped- PD	0	0	0	0	0	0	0	0	0	0	0	0	0	0%
Total:	482	390	479	434	403	253	177	248	37	0	0	0	323	100%
Uncontrollable Non-Issued Violations														
Administrative Dismissal	0	0	0	0	0	0	0	0	0	0	0	0	0	0%
Address/CDL/DOB Match Fail	0	0	0	0	0	0	0	0	0	0	0	0	0	0%
Car Obstructed	0	0	0	0	0	0	0	0	0	0	0	0	0	0%
Conditions Beyond Control	0	0	0	0	0	0	0	0	0	0	0	0	0	0%
Driver Identity Unclear	0	0	0	0	0	0	0	0	0	0	0	0	0	0%
Driver Obstructed	0	0	0	0	0	0	0	0	0	0	0	0	0	0%
Exposed	0	0	0	0	0	0	0	0	0	0	0	0	0	0%
Emergency Vehicle Issue	0	0	0	0	0	0	0	0	0	0	0	0	0	0%
Glare on Plate	0	0	0	0	0	0	0	0	0	0	0	0	0	0%
Glare on Windshield	0	0	0	0	0	0	0	0	0	0	0	0	0	0%
Illegible Plate	0	0	0	0	0	0	0	0	0	0	0	0	0	0%
Interest of Justice- PD	0	0	0	0	0	0	0	0	0	0	0	0	0	0%
Image Quality- PD	0	0	0	0	0	0	0	0	0	0	0	0	0	0%
Issuance Criteria Not Met- PD	0	0	0	0	0	0	0	0	0	0	0	0	0	0%
No Warning Sign	0	0	0	0	0	0	0	0	0	0	0	0	0	0%
No Plate	0	0	0	1	0	1	0	0	0	0	0	0	1	25%
No Speed Captured	0	0	0	0	0	0	0	0	0	0	0	0	0	0%
Obstruction In Photo- PD	0	0	0	1	0	0	0	0	0	0	0	0	1	25%
Out of State	0	1	0	1	0	0	0	0	0	0	0	0	1	25%
Plate Obstructed	0	0	0	0	1	0	0	0	0	0	0	0	1	25%
Short Yellow- PD	0	0	0	0	0	0	0	0	0	0	0	0	0	0%
Third Party Damage	0	0	0	0	0	0	0	0	0	0	0	0	0	0%
TSB Expired	0	0	0	0	0	0	0	0	0	0	0	0	0	0%
TSB No Hit	0	0	0	0	0	0	0	0	0	0	0	0	0	0%
Total:	0	1	0	3	1	1	0	0	0	0	0	0	4	100%
Controllable Non-Issued Violations														
Conduent Expire	0	0	0	0	0	0	0	0	0	0	0	0	0	0%
Clarity of Plate	0	0	0	0	0	0	0	0	0	0	0	0	0	0%
Clarity of Driver	0	0	0	0	0	0	0	0	0	0	0	0	0	0%
Dark Interior	0	0	0	0	0	0	0	0	0	0	0	0	0	0%
Data Box Related- PD	0	0	0	0	0	0	0	0	0	0	0	0	0	0%
Data Box Data Error- PD	0	0	0	0	2	0	0	0	0	0	0	0	2	26%
Data Entry Error	3	3	0	0	2	0	1	2	0	0	0	0	2	29%
Exposed	0	0	0	0	0	0	0	0	0	0	0	0	0	0%
Equipment Malfunction	0	0	0	0	0	2	0	3	0	0	0	0	3	32%
Framing- PD	0	0	0	0	0	0	0	0	0	0	0	0	0	0%
Framing of Car	0	0	1	0	0	0	1	0	0	0	0	0	1	13%
Framing of Driver	0	0	0	0	0	0	0	0	0	0	0	0	0	0%
Operator Error	0	0	0	0	0	0	0	0	0	0	0	0	0	0%
Framing of Plate	0	0	0	0	0	0	0	0	0	0	0	0	0	0%
Reject Expired	0	0	0	0	0	0	0	0	0	0	0	0	0	0%
Speed Not Determined	0	0	0	0	0	0	0	0	0	0	0	0	0	0%
Total:	3	3	1	0	4	2	2	5	0	0	0	0	8	100%
Summary Metrics														
Daily Average Vehicle Passes	0	0	0	0	0	0	0	0	0	0	0	0	0	0
Average Issued Speed	20	0	24	21	15	0	0	14	0	0	0	0	19	
Average Issued Red Seconds	47.6	0.0	9.9	36.7	5.9	0.0	0.0	0.2	0.0	0	0	0	20.1	
Citation / Violation Issuance Rate	25%	0%	86%	50%	17%	0%	0%	0%	0%	0%	0%	0%	44%	
Controllable Issuance Rate	25%	0%	86%	100%	20%	0%	0%	0%	0%	0%	0%	0%	58%	



**Los Angeles County MTA Expo Line
Monthly Citation Yield - By Location
October 2018**

Direction	Location	Code	Movement	Days of Enforcement	Events	Violations	Citations	Yield*
SB to EB	Flower @ Washintgon	5008	Left	30	530	31	12	0.40
SB to WB	Flower @ USC Trade Tech	5018	Left	30	638	7	2	0.07
SB to EB	Flower @ 23rd	5028	Left	30	1,046	2	0	0.00
SB to EB	Flower @ Adams	5038	Left	30	578	10	0	0.00
SB to EB	Flower @ 28th	5048	Left	30	227	112	55	1.83
SB to EB	Flower @ 30th	5058	Left	30	1,003	5	3	0.10
SB to EB	Flower @ Jefferson	5068	Left	30	1,085	29	16	0.53
EB to NB	Exposition @ Watt	5077	Left	30	241	20	3	0.10
WB to SB	Exposition @ Bill Robertson	5079	Left	30	272	10	4	0.13
EB to NB	Exposition @ Vermont	5087	Left	30	966	133	23	0.77
WB to SB	Exposition @ Vermont	5089	Left	30	702	49	16	0.53
EB to NB	Exposition @ Raymond	5097	Left	30	306	18	12	0.40
EB to NB	Exposition @ Normandie	5107	Left	30	628	244	125	4.17
WB to SB	Exposition @ Normandie	5109	Left	30	898	84	40	1.33
EB to NB	Exposition @ Halldale	5117	Left	30	335	34	15	0.50
WB to SB	Exposition @ Denker	5119	Left	30	398	63	34	1.13
EB to NB	Exposition @ Western	5127	Left	30	531	147	97	3.23
WB to SB	Exposition @ Western	5129	Left	30	488	7	1	0.03
EB to SB	Exposition @ Crenshaw	5137	Right	0	0	0	0	NA
Totals				28	10,872	1,005	458	16.11

*Yield is the number of citations issued per day of enforcement.