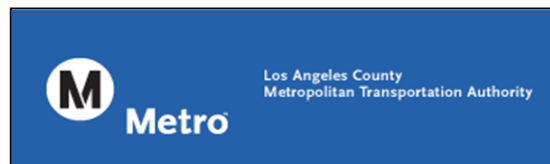




Gold Line Monthly Report

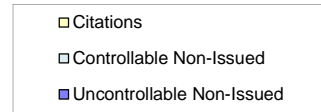
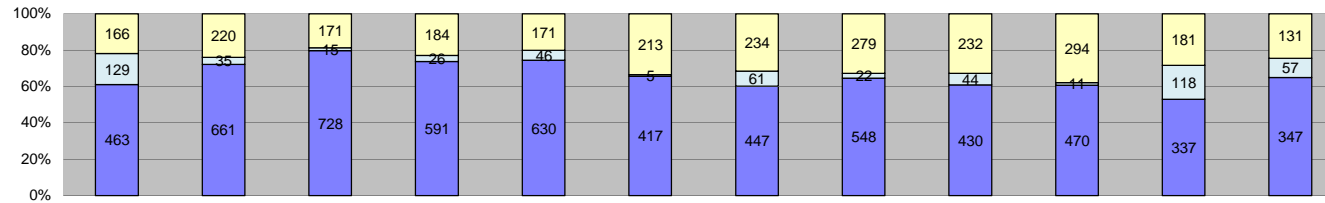


December 2012

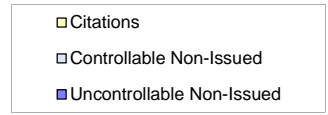
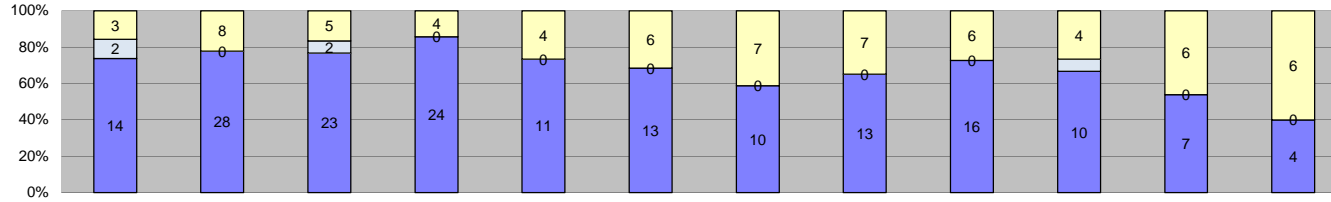


Table of Contents

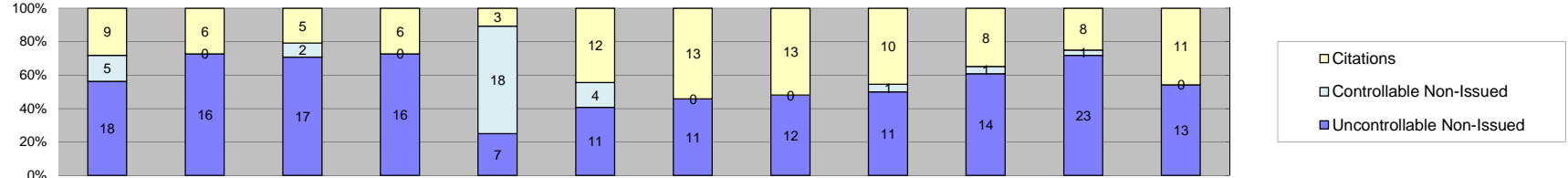
Report Title	Page
<i>Approach Summary Report, All Locations.....</i>	3
<i>Approach Summary Report, Location 4007: EB to NB 3rd @ Civic Center.....</i>	4
<i>Approach Summary Report, Location 4009: WB to SB 3rd @ La Verne.....</i>	5
<i>Approach Summary Report, Location 4017: EB to NB 3rd @ Mednik.....</i>	6
<i>Approach Summary Report, Location 4019: WB to SB 3rd @ Mednik.....</i>	7
<i>Approach Summary Report, Location 4027: EB to NB 3rd @ Arizona.....</i>	8
<i>Approach Summary Report, Location 4029: WB to SB 3rd @ Arizona.....</i>	9
<i>Approach Summary Report, Location 4037: EB to NB 3rd @ McDonnell.....</i>	10
<i>Approach Summary Report, Location 4039: WB to SB 3rd @ McDonnell.....</i>	11
<i>Approach Summary Report, Location 4047: EB to NB 3rd @ Ford.....</i>	12
<i>Approach Summary Report, Location 4049: WB to SB 3rd @ Ford.....</i>	13
<i>Approach Summary Report, Location 4057: EB to NB 3rd @ Eastern.....</i>	14
<i>Approach Summary Report, Location 4059: WB to SB 3rd @ Eastern.....</i>	15
<i>Approach Summary Report, Location 4069: WB to SB 3rd @ Downey.....</i>	16
<i>Approach Summary Report, Location 4077: EB to NB 3rd @ Gage.....</i>	17
<i>Approach Summary Report, Location 4079: WB to SB 3rd @ Gage.....</i>	18
<i>Approach Summary Report, Location 4083: EB to NB 1st @ Rowan.....</i>	19
<i>Approach Summary Report, Location 4085: WB to SB 1st @ Rowan.....</i>	20
<i>Approach Summary Report, Location 4087: EB to NB 1st @ Lorena.....</i>	21
<i>Approach Summary Report, Location 4089: WB to SB 1st @ Lorena.....</i>	22
<i>Approach Summary Report, Location 4097: EB to NB 1st @ Clarence.....</i>	23
<i>Approach Summary Report, Location 4099: WB to SB 1st @ Clarence.....</i>	24
<i>Approach Summary Report, Location 4109: WB to SB 1st @ Utah.....</i>	25
<i>Approach Summary Report, Location 4119: WB to SB 1st @ Anderson.....</i>	26
<i>Approach Summary Report, Location 4127: EB to NB 1st @ Mission.....</i>	27
<i>Approach Summary Report, Location 4129: WB to SB 1st @ Mission.....</i>	27
<i>Approach Summary Report, Location 4137: SB to EB Alameda St. @ Temple St.....</i>	28
<i>Customer Service Report.....</i>	29
<i>Monthly Citation Yield Report.....</i>	30
<i>Disposition Summary Report.....</i>	31
<i>Performance Report.....</i>	32



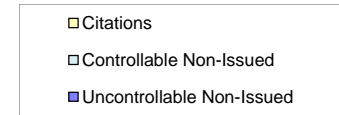
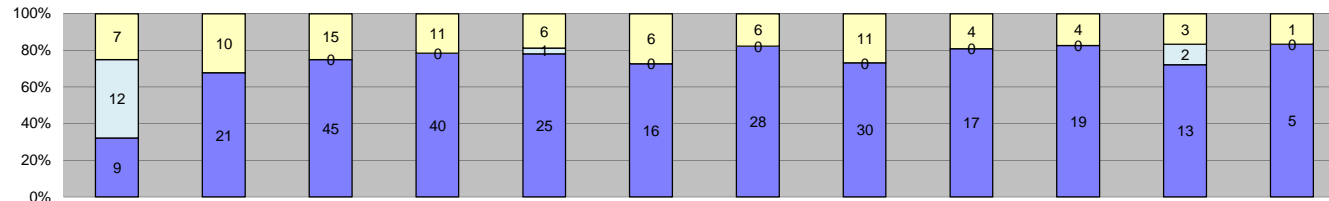
Events	Jan-12	Feb-12	Mar-12	Apr-12	May-12	Jun-12	Jul-12	Aug-12	Sep-12	Oct-12	Nov-12	Dec-12	Year to Date Monthly Average		2011 Monthly Average	
													Quantity	%	Quantity	%
Non-Violations	9,795	7,696	8,201	8,236	8,355	7,372	8,903	9,172	8,486	9,186	8,280	7,857	8,462	92%	10,919	92%
Violations	758	916	914	801	847	635	742	849	706	775	636	535	760	8%	921	8%
Total:	10,553	8,612	9,115	9,037	9,202	8,007	9,645	10,021	9,192	9,961	8,916	8,392	9,221	100%	11,840	100%
Violations																
Uncontrollable Non-Issued	463	661	728	591	630	417	447	548	430	470	337	347	506	67%	574	62%
Controllable Non-Issued	129	35	15	26	46	5	61	22	44	11	118	57	47	6%	62	7%
Citations	166	220	171	184	171	213	234	279	232	294	181	131	206	27%	285	31%
Total:	758	916	914	801	847	635	742	849	706	775	636	535	760	100%	921	100%
Non-Violations																
Rear Axle Violation	2	2	5	2	6	2	17	13	1	2	1	4	5	0%	3	0%
Emergency Vehicle	217	315	268	200	302	165	226	329	268	234	211	156	241	3%	310	3%
Right Turn	0	0	0	0	0	0	0	0	0	0	0	0	0	0%	0	0%
No Violation Occurred	9,576	7,379	7,928	8,034	8,047	7,205	8,660	8,830	8,217	8,950	8,068	7,697	8,216	97%	10,606	97%
Total:	9,795	7,696	8,201	8,236	8,355	7,372	8,903	9,172	8,486	9,186	8,280	7,857	8,462	100%	10,919	100%
Uncontrollable Non-Issued Violations																
No Plate	56	76	63	71	62	31	83	89	52	80	56	43	64	12%	77	13%
Out of State Plate	3	1	14	5	8	4	7	11	4	8	11	1	6	1%	9	1%
Glare on Plate	4	37	19	14	12	5	18	14	10	17	4	0	14	3%	10	2%
Illegible Plate	19	136	163	120	131	96	111	154	93	111	60	49	104	19%	11	2%
Plate Obstructed	4	7	13	8	11	5	3	10	6	9	5	1	7	1%	6	1%
Windshield Glare	12	40	36	36	51	27	37	32	25	27	22	0	31	6%	44	8%
Driver Obstructed	15	23	19	32	37	10	17	31	30	21	15	1	21	4%	57	10%
Car Obstructed	179	144	193	116	119	57	28	45	13	4	2	0	82	15%	174	30%
No DMV Match Found	60	73	82	69	71	63	60	78	100	101	88	74	77	14%	73	13%
LASD Expired	0	0	1	28	0	8	0	0	0	11	15	112	29	5%	2	0%
LASD Return	111	124	125	92	128	111	83	84	97	66	40	46	92	17%	93	16%
Other	0	0	0	0	0	0	0	0	0	15	19	20	18	3%	23	4%
Total:	463	661	728	591	630	417	447	548	430	470	337	347	544	100%	578	100%
Controllable Non-Issued Violations																
Framing of Plate	10	0	1	1	0	0	0	0	0	0	0	0	4	6%	15	24%
Focus / Clarity of Plate	2	2	5	0	5	0	1	0	0	0	1	0	3	4%	3	5%
Dark Interior	10	5	4	0	3	0	0	0	1	5	9	0	5	7%	14	22%
Framing of Driver	9	0	1	2	1	0	1	1	4	1	1	0	2	3%	17	28%
Focus / Clarity of Driver	1	1	0	0	0	0	0	0	0	0	0	0	1	1%	2	3%
Framing of Car	3	0	0	0	2	0	0	1	1	1	0	0	2	2%	5	7%
Data/Operator Error	0	0	0	0	8	3	0	0	0	1	17	7	7	10%	0	0%
Exposure	6	11	4	6	18	1	1	4	2	2	9	0	6	8%	2	3%
Equipment Malfunction	87	16	0	17	9	0	58	16	36	0	81	50	41	57%	5	7%
ACS Expired	1	0	0	0	0	1	0	0	0	1	0	0	1	1%	0	1%
Total:	129	35	15	26	46	5	61	22	44	11	118	57	72	100%	63	100%
Summary Metrics																
Daily Average Vehicle Passes	17,846	17,997	17,826	17,104	19,284	16,137	18,062	18,586	20,736	21,829	20,944	21,467	Year to Date Monthly Average		2011 Monthly Average	
Average Issued Speed	20	20	20	20	20	20	21	20	20	20	20	20	18,985		16,741	
Average Issued Red Seconds	41.9	34.8	34.3	44.6	37.7	43.2	58.8	44.9	43.3	53.6	27.5	41.1	42.1		45.2	
Citation / Violation Issuance Rate	22%	24%	19%	23%	20%	34%	32%	33%	33%	38%	28%	24%	27%		31%	
Controllable Issuance Rate	56%	86%	92%	88%	79%	98%	79%	93%	84%	96%	61%	70%	82%		83%	



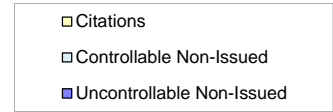
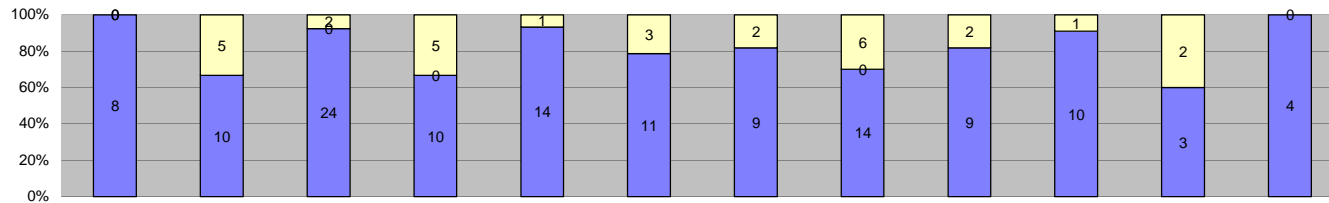
Events	2012												Year to Date Monthly Average		2011 Monthly Average	
	Jan-12	Feb-12	Mar-12	Apr-12	May-12	Jun-12	Jul-12	Aug-12	Sep-12	Oct-12	Nov-12	Dec-12	Quantity	%	Quantity	%
Non-Violations	708	616	562	635	634	719	840	717	633	651	600	601	660	97%	792	95%
Violations	19	36	30	28	15	19	17	20	22	15	13	10	20	3%	40	5%
Total:	727	652	592	663	649	738	857	737	655	666	613	611	680	100%	833	100%
Violations																
Uncontrollable Non-Issued	14	28	23	24	11	13	10	13	16	10	7	4	14	67%	25	63%
Controllable Non-Issued	2	0	2	0	0	0	0	0	0	1	0	0	2	8%	2	6%
Citations	3	8	5	4	4	6	7	7	6	4	6	6	6	25%	13	32%
Total:	19	36	30	28	15	19	17	20	22	15	13	10	22	100%	40	100%
Non-Violations																
Rear Axle Violation	1	0	0	0	0	2	3	0	0	0	0	0	2	0%	0	0%
Emergency Vehicle	4	6	4	3	4	3	1	5	8	2	3	0	4	1%	5	1%
Right Turn	0	0	0	0	0	0	0	0	0	0	0	0	0	0%	0	0%
No Violation Occurred	703	610	558	632	630	714	836	712	625	649	597	601	656	99%	787	99%
Total:	708	616	562	635	634	719	840	717	633	651	600	601	661	100%	792	100%
Uncontrollable Non-Issued Violations																
No Plate	0	3	1	1	0	0	2	1	1	4	1	0	2	8%	3	10%
Out of State Plate	1	0	0	0	1	0	0	1	0	0	0	0	1	5%	1	2%
Glare on Plate	0	0	0	1	1	0	0	1	0	0	0	0	1	5%	1	3%
Illegible Plate	0	1	7	5	1	3	4	6	4	2	1	2	3	15%	2	6%
Plate Obstructed	0	0	0	0	0	0	0	0	0	0	0	0	0	0%	0	1%
Windshield Glare	0	3	3	0	0	1	1	0	2	0	1	0	2	8%	2	6%
Driver Obstructed	1	1	0	1	1	0	1	1	5	1	1	0	1	7%	4	17%
Car Obstructed	9	18	8	12	3	4	1	0	0	0	0	0	8	36%	10	38%
No DMV Match Found	2	1	2	2	1	1	0	2	2	1	1	2	2	7%	2	6%
LASD Expired	0	0	0	0	0	0	0	0	0	0	0	0	0	0%	0	0%
LASD Return	1	1	2	2	3	4	1	1	2	2	2	0	2	9%	2	9%
Other	0	0	0	0	0	0	0	0	0	0	0	0	0	0%	1	3%
Total:	14	28	23	24	11	13	10	13	16	10	7	4	22	100%	25	100%
Controllable Non-Issued Violations																
Framing of Plate	1	0	0	0	0	0	0	0	0	0	0	0	1	25%	1	30%
Focus / Clarity of Plate	0	0	1	0	0	0	0	0	0	0	0	0	1	25%	0	11%
Dark Interior	0	0	0	0	0	0	0	0	0	0	0	0	0	0%	1	30%
Framing of Driver	0	0	0	0	0	0	0	0	0	0	0	0	0	0%	0	15%
Focus / Clarity of Driver	0	0	0	0	0	0	0	0	0	0	0	0	0	0%	0	0%
Framing of Car	1	0	0	0	0	0	0	0	0	0	0	0	1	25%	0	7%
Data/Operator Error	0	0	0	0	0	0	0	0	0	0	0	0	0	0%	0	0%
Exposure	0	0	1	0	0	0	0	0	0	1	0	0	1	25%	0	7%
Equipment Malfunction	0	0	0	0	0	0	0	0	0	0	0	0	0	0%	0	0%
ACS Expired	0	0	0	0	0	0	0	0	0	0	0	0	0	0%	0	0%
Total:	2	0	2	0	0	0	0	0	0	1	0	0	4	100%	2	100%
Summary Metrics																
Daily Average Vehicle Passes	283	259	278	258	255	248	315	327	531	433	475	462	Year to Date Monthly Average		2011 Monthly Average	
Average Issued Speed	21	19	18	18	17	17	17	16	18	18	20	17	344		260	
Average Issued Red Seconds	10.4	7.1	5.3	46.0	54.4	93.0	64.1	73.1	47.4	75.2	36.3	49.1	47		59.7	
Citation / Violation Issuance Rate	16%	22%	17%	14%	27%	32%	41%	35%	27%	27%	46%	60%	30%		32%	
Controllable Issuance Rate	60%	100%	71%	100%	100%	100%	100%	100%	100%	80%	100%	100%	93%		85%	



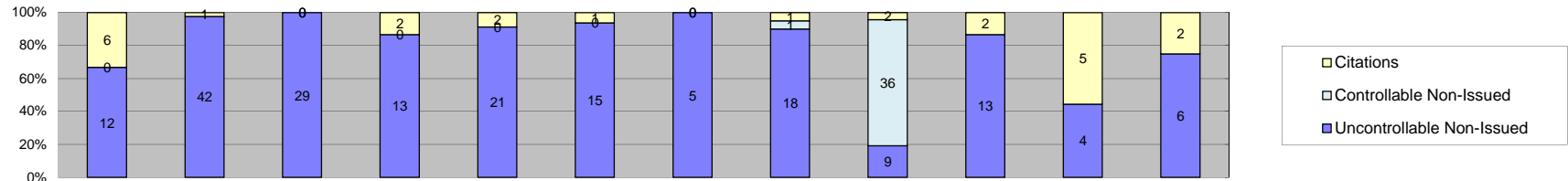
Events	Jan-12	Feb-12	Mar-12	Apr-12	May-12	Jun-12	Jul-12	Aug-12	Sep-12	Oct-12	Nov-12	Dec-12	Year to Date Monthly Average		2011 Monthly Average	
													Quantity	%	Quantity	%
Non-Violations	227	180	221	256	215	164	275	245	219	228	198	221	221	90%	370	84%
Violations	32	22	24	22	28	27	24	25	22	23	32	24	25	10%	73	16%
Total:	259	202	245	278	243	191	299	270	241	251	230	245	246	100%	442	100%
Violations																
Uncontrollable Non-Issued	18	16	17	16	7	11	11	12	11	14	23	13	14	52%	40	55%
Controllable Non-Issued	5	0	2	0	18	4	0	0	1	1	1	0	5	17%	6	9%
Citations	9	6	5	6	3	12	13	13	10	8	8	11	9	32%	26	36%
Total:	32	22	24	22	28	27	24	25	22	23	32	24	27	100%	73	100%
Non-Violations																
Rear Axle Violation	0	0	0	0	0	0	0	1	0	0	0	0	1	0%	0	0%
Emergency Vehicle	63	74	67	51	61	46	32	51	42	37	58	29	51	23%	99	27%
Right Turn	0	0	0	0	0	0	0	0	0	0	0	0	0	0%	0	0%
No Violation Occurred	164	106	154	205	154	118	243	193	177	191	140	192	170	77%	270	73%
Total:	227	180	221	256	215	164	275	245	219	228	198	221	222	100%	370	100%
Uncontrollable Non-Issued Violations																
No Plate	4	6	4	5	1	3	1	6	3	3	5	5	4	17%	11	28%
Out of State Plate	0	0	0	0	0	0	1	0	0	1	1	0	1	5%	1	3%
Glare on Plate	0	0	0	0	1	0	0	0	0	0	0	0	1	5%	1	2%
Illegible Plate	2	1	4	4	0	3	3	5	1	1	2	1	2	11%	1	4%
Plate Obstructed	0	0	0	0	0	0	0	0	0	0	0	0	0	0%	0	1%
Windshield Glare	0	0	2	0	1	0	0	0	0	0	0	0	2	7%	3	8%
Driver Obstructed	1	2	0	0	0	0	0	1	1	2	1	0	1	6%	5	14%
Car Obstructed	3	1	4	0	2	0	0	0	0	0	0	0	3	11%	4	9%
No DMV Match Found	2	2	1	4	0	4	4	4	3	5	9	3	4	17%	6	15%
LASD Expired	0	0	0	2	0	0	0	0	0	0	0	2	2	9%	0	0%
LASD Return	6	4	2	1	2	1	2	0	3	2	5	2	3	12%	6	15%
Other	0	0	0	0	0	0	0	0	0	0	0	0	0	0%	1	3%
Total:	18	16	17	16	7	11	11	12	11	14	23	13	22	100%	40	100%
Controllable Non-Issued Violations																
Framing of Plate	0	0	0	0	0	0	0	0	0	0	0	0	0	0%	1	12%
Focus / Clarity of Plate	0	0	1	0	0	0	0	0	0	0	0	0	1	5%	0	3%
Dark Interior	2	0	1	0	0	0	0	0	0	0	1	0	1	7%	1	12%
Framing of Driver	3	0	0	0	0	0	0	0	1	0	0	0	2	11%	3	49%
Focus / Clarity of Driver	0	0	0	0	0	0	0	0	0	0	0	0	0	0%	0	1%
Framing of Car	0	0	0	0	0	0	0	0	0	0	0	0	0	0%	1	9%
Data/Operator Error	0	0	0	0	7	3	0	0	0	1	0	0	4	20%	0	1%
Exposure	0	0	0	0	2	1	0	0	0	0	0	0	2	8%	0	0%
Equipment Malfunction	0	0	0	0	9	0	0	0	0	0	0	0	9	49%	1	13%
ACS Expired	0	0	0	0	0	0	0	0	0	0	0	0	0	0%	0	0%
Total:	5	0	2	0	18	4	0	0	1	1	1	0	19	100%	6	100%
Summary Metrics																
Daily Average Vehicle Passes	812	772	88	762	809	633	803	1,252	895	1,059	995	1,008	Year to Date Monthly Average		2011 Monthly Average	
Average Issued Speed	18	20	21	21	18	19	22	20	19	19	20	19	824		772	
Average Issued Red Seconds	33.4	16.9	0.2	1.6	6.7	27.3	24.0	11.1	20.5	8.8	2.1	32.6	15		49.2	
Citation / Violation Issuance Rate	28%	27%	21%	27%	11%	44%	54%	52%	45%	35%	25%	46%	35%		35%	
Controllable Issuance Rate	64%	100%	71%	100%	14%	75%	100%	100%	91%	89%	89%	100%	83%		80%	



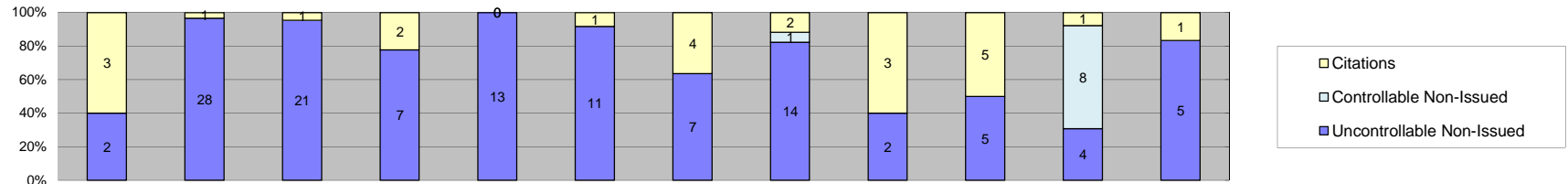
Events	Jan-12	Feb-12	Mar-12	Apr-12	May-12	Jun-12	Jul-12	Aug-12	Sep-12	Oct-12	Nov-12	Dec-12	Year to Date Monthly Average		2011 Monthly Average	
													Quantity	%	Quantity	%
Non-Violations	282	231	266	239	250	211	277	281	242	335	247	239	258	89%	440	93%
Violations	28	31	60	51	32	22	34	41	21	23	18	6	31	11%	33	7%
Total:	310	262	326	290	282	233	311	322	263	358	265	245	289	100%	474	100%
Violations																
Uncontrollable Non-Issued	9	21	45	40	25	16	28	30	17	19	13	5	22	65%	19	57%
Controllable Non-Issued	12	0	0	0	1	0	0	0	0	0	2	0	5	15%	4	12%
Citations	7	10	15	11	6	6	6	11	4	4	3	1	7	20%	10	30%
Total:	28	31	60	51	32	22	34	41	21	23	18	6	34	100%	33	100%
Non-Violations																
Rear Axle Violation	0	0	0	0	0	0	0	1	0	0	0	0	1	0%	0	0%
Emergency Vehicle	8	17	12	13	16	16	22	22	13	23	15	10	16	6%	23	5%
Right Turn	0	0	0	0	0	0	0	0	0	0	0	0	0	0%	0	0%
No Violation Occurred	274	214	254	226	234	195	255	258	229	312	232	229	243	94%	417	95%
Total:	282	231	266	239	250	211	277	281	242	335	247	239	259	100%	440	100%
Uncontrollable Non-Issued Violations																
No Plate	2	4	4	5	6	1	11	7	2	3	3	0	4	14%	3	13%
Out of State Plate	0	0	0	1	0	0	0	0	0	1	1	0	1	3%	0	1%
Glare on Plate	0	3	1	0	1	0	2	1	0	1	0	0	2	5%	1	5%
Illegible Plate	1	0	10	13	3	2	6	9	3	3	2	1	5	15%	1	3%
Plate Obstructed	0	0	1	0	0	0	0	0	0	0	0	0	1	3%	0	1%
Windshield Glare	0	3	5	8	6	6	2	2	2	3	4	0	4	13%	2	11%
Driver Obstructed	0	0	2	1	1	0	0	3	3	1	0	0	2	6%	2	11%
Car Obstructed	4	5	6	4	4	1	4	0	0	0	0	0	4	13%	7	34%
No DMV Match Found	0	3	6	2	1	3	1	4	5	4	2	0	3	10%	2	10%
LASD Expired	0	0	0	2	0	0	0	0	0	0	0	0	2	6%	0	0%
LASD Return	2	3	10	4	3	3	2	4	2	3	1	4	3	11%	2	9%
Other	0	0	0	0	0	0	0	0	0	0	0	0	0	0%	0	1%
Total:	9	21	45	40	25	16	28	30	17	19	13	5	31	100%	19	100%
Controllable Non-Issued Violations																
Framing of Plate	0	0	0	0	0	0	0	0	0	0	0	0	0	0%	0	7%
Focus / Clarity of Plate	0	0	0	0	0	0	0	0	0	0	0	0	0	0%	1	11%
Dark Interior	2	0	0	0	1	0	0	0	0	0	1	0	1	20%	2	52%
Framing of Driver	0	0	0	0	0	0	0	0	0	0	0	0	0	0%	0	4%
Focus / Clarity of Driver	0	0	0	0	0	0	0	0	0	0	0	0	0	0%	0	7%
Framing of Car	0	0	0	0	0	0	0	0	0	0	0	0	0	0%	1	17%
Data/Operator Error	0	0	0	0	0	0	0	0	0	0	0	0	0	0%	0	0%
Exposure	0	0	0	0	0	0	0	0	0	0	0	0	0	0%	0	2%
Equipment Malfunction	10	0	0	0	0	0	0	0	0	0	1	0	6	80%	0	0%
ACS Expired	0	0	0	0	0	0	0	0	0	0	0	0	0	0%	0	0%
Total:	12	0	0	0	1	0	0	0	0	0	2	0	7	100%	5	100%
Summary Metrics																
Daily Average Vehicle Passes	861	904	887	816	891	725	874	860	968	1,411	1,174	1,285	Year to Date Monthly Average		2011 Monthly Average	
Average Issued Speed	22	23	23	24	22	27	24	27	24	23	31	29	971		822	
Average Issued Red Seconds	7.6	0.4	9.5	12.8	23.3	17.1	28.0	13.4	12.1	20.8	10.2	32.0	16		18.2	
Citation / Violation Issuance Rate	25%	32%	25%	22%	19%	27%	18%	27%	19%	17%	17%	17%	22%		30%	
Controllable Issuance Rate	37%	100%	100%	100%	86%	100%	100%	100%	100%	100%	60%	100%	90%		74%	



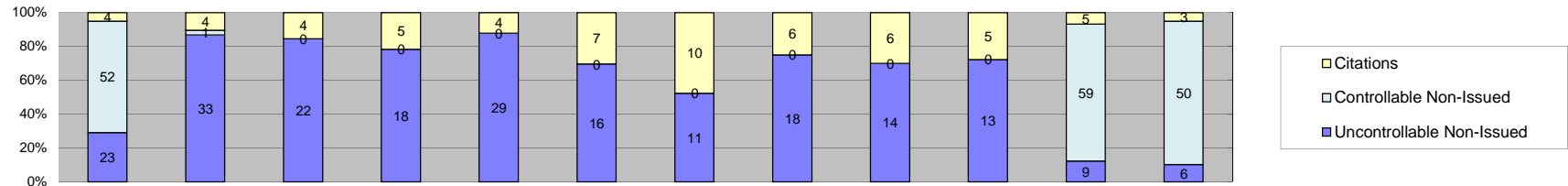
Events	Jan-12	Feb-12	Mar-12	Apr-12	May-12	Jun-12	Jul-12	Aug-12	Sep-12	Oct-12	Nov-12	Dec-12	Year to Date Monthly Average		2011 Monthly Average	
													Quantity	%	Quantity	%
Non-Violations	343	225	227	214	298	196	252	249	254	271	208	212	246	95%	289	95%
Violations	8	15	26	15	15	14	11	20	11	11	5	4	13	5%	14	5%
Total:	351	240	253	229	313	210	263	269	265	282	213	216	259	100%	303	100%
Violations																
Uncontrollable Non-Issued	8	10	24	10	14	11	9	14	9	10	3	4	11	78%	10	68%
Controllable Non-Issued	0	0	0	0	0	0	0	0	0	0	0	0	0	0%	0	2%
Citations	0	5	2	5	1	3	2	6	2	1	2	0	3	22%	4	30%
Total:	8	15	26	15	15	14	11	20	11	11	5	4	13	100%	14	100%
Non-Violations																
Rear Axle Violation	0	0	0	0	0	0	0	0	0	0	0	0	0	0%	0	0%
Emergency Vehicle	15	23	27	12	37	9	24	46	37	23	18	14	24	10%	21	7%
Right Turn	0	0	0	0	0	0	0	0	0	0	0	0	0	0%	0	0%
No Violation Occurred	328	202	200	202	261	187	228	203	217	248	190	198	222	90%	268	93%
Total:	343	225	227	214	298	196	252	249	254	271	208	212	246	100%	289	100%
Uncontrollable Non-Issued Violations																
No Plate	2	0	3	0	1	1	2	2	1	1	0	3	2	10%	1	6%
Out of State Plate	0	0	1	0	0	0	0	0	0	1	0	0	1	5%	0	0%
Glare on Plate	0	0	0	1	0	0	0	1	1	0	0	0	1	5%	0	3%
Illegible Plate	1	2	6	3	8	3	4	6	3	5	0	1	4	21%	0	2%
Plate Obstructed	0	0	1	0	0	0	0	1	0	0	0	0	1	5%	0	1%
Windshield Glare	0	0	1	0	0	0	0	0	0	0	1	0	1	5%	0	2%
Driver Obstructed	0	0	0	0	0	0	0	1	0	0	0	0	1	5%	0	2%
Car Obstructed	5	6	8	3	3	2	0	0	1	0	0	0	4	22%	7	68%
No DMV Match Found	0	1	2	0	0	1	1	1	3	1	2	0	2	8%	1	10%
LASD Expired	0	0	0	0	0	0	0	0	0	0	0	0	0	0%	0	0%
LASD Return	0	1	2	3	2	4	2	2	0	2	0	0	2	12%	0	4%
Other	0	0	0	0	0	0	0	0	0	0	0	0	0	0%	0	3%
Total:	8	10	24	10	14	11	9	14	9	10	3	4	18	100%	10	100%
Controllable Non-Issued Violations																
Framing of Plate	0	0	0	0	0	0	0	0	0	0	0	0	0	0	0	14%
Focus / Clarity of Plate	0	0	0	0	0	0	0	0	0	0	0	0	0	0	0	0%
Dark Interior	0	0	0	0	0	0	0	0	0	0	0	0	0	0	0	57%
Framing of Driver	0	0	0	0	0	0	0	0	0	0	0	0	0	0	0	29%
Focus / Clarity of Driver	0	0	0	0	0	0	0	0	0	0	0	0	0	0	0	0%
Framing of Car	0	0	0	0	0	0	0	0	0	0	0	0	0	0	0	0%
Data/Operator Error	0	0	0	0	0	0	0	0	0	0	0	0	0	0	0	0%
Exposure	0	0	0	0	0	0	0	0	0	0	0	0	0	0	0	0%
Equipment Malfunction	0	0	0	0	0	0	0	0	0	0	0	0	0	0	0	0%
ACS Expired	0	0	0	0	0	0	0	0	0	0	0	0	0	0	0	0%
Total:	0	0	0	0	0	0	0	0	0	0	0	0	0	0%	1	100%
Summary Metrics																
Daily Average Vehicle Passes	455	509	510	439	449	432	503	520	666	627	633	650	Year to Date Monthly Average		2011 Monthly Average	
Average Issued Speed	0	25	21	22	21	25	26	24	21	28	27	0	533		483	
Average Issued Red Seconds	0	25.8	86.0	84.6	0.8	19.2	50.5	53.7	99.9	0.1	43.0	0	46		46.0	
Citation / Violation Issuance Rate	0%	33%	8%	33%	7%	21%	18%	30%	18%	9%	40%	0%	22%		27%	
Controllable Issuance Rate	0%	100%	100%	100%	100%	100%	100%	100%	100%	100%	100%	0%	100%		92%	



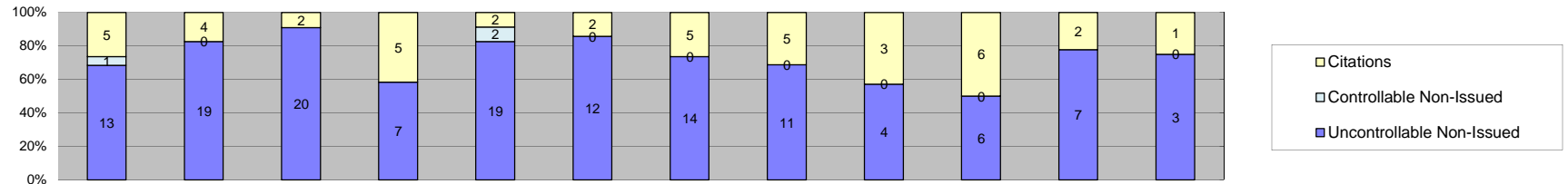
Events	Jan-12	Feb-12	Mar-12	Apr-12	May-12	Jun-12	Jul-12	Aug-12	Sep-12	Oct-12	Nov-12	Dec-12	Year to Date Monthly Average		2011 Monthly Average	
													Quantity	%	Quantity	%
Non-Violations	621	514	586	548	608	476	504	532	452	577	391	437	521	96%	502	95%
Violations	18	43	29	15	23	16	5	20	47	15	9	8	21	4%	25	5%
Total:	639	557	615	563	631	492	509	552	499	592	400	445	541	100%	527	100%
Violations																
Uncontrollable Non-Issued	12	42	29	13	21	15	5	18	9	13	4	6	16	43%	16	64%
Controllable Non-Issued	0	0	0	0	0	0	0	1	36	0	0	0	19	51%	1	4%
Citations	6	1	0	2	2	1	0	1	2	2	5	2	2	7%	8	32%
Total:	18	43	29	15	23	16	5	20	47	15	9	8	36	100%	25	100%
Non-Violations																
Rear Axle Violation	0	0	0	0	0	0	2	1	0	0	0	0	2	0%	0	0%
Emergency Vehicle	0	21	2	7	5	1	5	6	8	4	2	2	6	1%	4	1%
Right Turn	0	0	0	0	0	0	0	0	0	0	0	0	0	0%	0	0%
No Violation Occurred	621	493	584	541	603	475	497	525	444	573	389	435	515	99%	499	99%
Total:	621	514	586	548	608	476	504	532	452	577	391	437	522	100%	502	100%
Uncontrollable Non-Issued Violations																
No Plate	1	1	2	2	1	0	1	5	3	2	1	2	2	7%	2	13%
Out of State Plate	0	0	0	0	0	0	0	0	0	0	0	0	0	0%	0	0%
Glare on Plate	0	1	0	0	0	0	0	0	0	1	0	0	1	4%	0	0%
Illegible Plate	0	26	8	5	4	8	3	6	2	4	1	1	6	24%	0	2%
Plate Obstructed	0	0	4	0	0	0	0	1	0	0	0	0	3	10%	0	0%
Windshield Glare	0	1	0	0	2	1	0	1	0	0	0	0	1	5%	2	11%
Driver Obstructed	0	2	0	3	4	1	0	3	2	0	1	0	2	9%	3	17%
Car Obstructed	10	8	11	1	7	2	1	0	0	0	0	0	6	22%	7	41%
No DMV Match Found	1	2	1	1	0	0	0	2	1	4	1	0	2	6%	1	8%
LASD Expired	0	0	0	1	0	0	0	0	0	0	0	1	1	4%	0	1%
LASD Return	0	1	3	0	3	3	0	0	1	2	0	2	2	8%	1	6%
Other	0	0	0	0	0	0	0	0	0	0	0	0	0	0%	0	1%
Total:	12	42	29	13	21	15	5	18	9	13	4	6	26	100%	18	100%
Controllable Non-Issued Violations																
Framing of Plate	0	0	0	0	0	0	0	0	0	0	0	0	0	0%	0	17%
Focus / Clarity of Plate	0	0	0	0	0	0	0	0	0	0	0	0	0	0%	0	8%
Dark Interior	0	0	0	0	0	0	0	0	0	0	0	0	0	0%	1	67%
Framing of Driver	0	0	0	0	0	0	0	0	0	0	0	0	0	0%	0	0%
Focus / Clarity of Driver	0	0	0	0	0	0	0	0	0	0	0	0	0	0%	0	0%
Framing of Car	0	0	0	0	0	0	0	1	0	0	0	0	1	3%	0	8%
Data/Operator Error	0	0	0	0	0	0	0	0	0	0	0	0	0	0%	0	0%
Exposure	0	0	0	0	0	0	0	0	0	0	0	0	0	0%	0	0%
Equipment Malfunction	0	0	0	0	0	0	0	0	36	0	0	0	36	97%	0	0%
ACS Expired	0	0	0	0	0	0	0	0	0	0	0	0	0	0%	0	0%
Total:	0	0	0	0	0	0	0	1	36	0	0	0	37	100%	1	100%
Summary Metrics																
Daily Average Vehicle Passes	326	604	323	318	355	288	352	394	512	527	551	533	Year to Date Monthly Average		2011 Monthly Average	
Average Issued Speed	20	14	0	18	17	18	0	23	16	22	20	17	424		306	
Average Issued Red Seconds	48.4	99.9	0	99.9	50.1	0.7	0	99.9	1.7	0.3	26.8	17.8	45		57.1	
Citation / Violation Issuance Rate	33%	2%	0%	13%	9%	6%	0%	5%	4%	13%	56%	25%	17%		35%	
Controllable Issuance Rate	100%	100%	0%	100%	100%	100%	0%	50%	5%	100%	100%	100%	86%		92%	



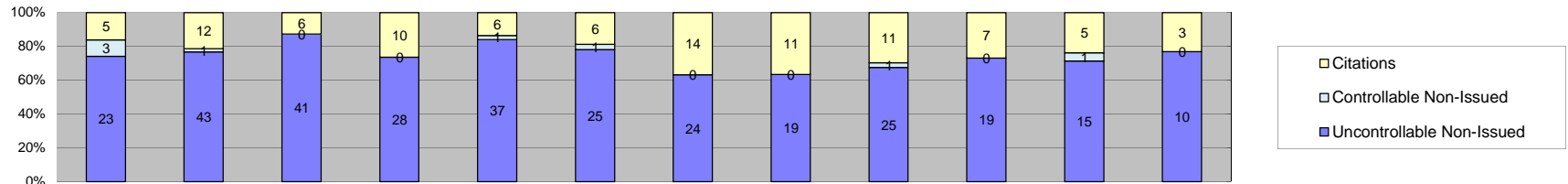
Events	Year to Date												Year to Date Monthly Average		2011 Monthly Average	
	Jan-12	Feb-12	Mar-12	Apr-12	May-12	Jun-12	Jul-12	Aug-12	Sep-12	Oct-12	Nov-12	Dec-12	Quantity	%	Quantity	%
Non-Violations	161	150	184	134	198	149	183	220	187	198	184	167	176	93%	170	96%
Violations	5	29	22	9	13	12	11	17	5	10	13	6	13	7%	8	4%
Total:	166	179	206	143	211	161	194	237	192	208	197	173	189	100%	177	100%
Violations																
Uncontrollable Non-Issued	2	28	21	7	13	11	7	14	2	5	4	5	10	60%	5	67%
Controllable Non-Issued	0	0	0	0	0	0	0	1	0	0	8	0	5	27%	0	0%
Citations	3	1	1	2	0	1	4	2	3	5	1	1	2	13%	3	33%
Total:	5	29	22	9	13	12	11	17	5	10	13	6	17	100%	8	100%
Non-Violations																
Rear Axle Violation	0	0	0	0	0	0	1	1	0	0	0	0	1	1%	0	0%
Emergency Vehicle	5	20	8	6	9	9	3	14	4	8	1	3	8	4%	5	3%
Right Turn	0	0	0	0	0	0	0	0	0	0	0	0	0	0%	0	0%
No Violation Occurred	156	130	176	128	189	140	179	205	183	190	183	164	169	95%	165	97%
Total:	161	150	184	134	198	149	183	220	187	198	184	167	177	100%	170	100%
Uncontrollable Non-Issued Violations																
No Plate	0	3	2	1	3	0	0	3	0	1	0	1	2	9%	1	13%
Out of State Plate	0	0	1	0	0	0	0	0	0	0	0	0	1	5%	0	3%
Glare on Plate	0	7	2	0	0	0	0	0	0	0	0	0	5	21%	0	0%
Illegible Plate	0	12	11	1	7	7	7	8	2	3	3	2	6	27%	0	0%
Plate Obstructed	0	0	0	0	0	0	0	0	0	0	0	0	0	0%	0	0%
Windshield Glare	0	1	0	1	0	0	0	0	0	0	1	0	1	5%	0	0%
Driver Obstructed	0	0	1	1	0	0	0	0	0	0	0	0	1	5%	1	10%
Car Obstructed	2	3	2	1	2	1	0	0	0	0	0	0	2	9%	3	54%
No DMV Match Found	0	2	0	0	0	1	0	2	0	0	0	0	2	8%	1	14%
LASD Expired	0	0	0	2	0	0	0	0	0	0	0	1	2	7%	0	0%
LASD Return	0	0	2	0	1	2	0	1	0	1	0	1	1	6%	0	4%
Other	0	0	0	0	0	0	0	0	0	0	0	0	0	0%	0	1%
Total:	2	28	21	7	13	11	7	14	2	5	4	5	22	100%	6	100%
Controllable Non-Issued Violations																
Framing of Plate	0	0	0	0	0	0	0	0	0	0	0	0	0	0%	0	0
Focus / Clarity of Plate	0	0	0	0	0	0	0	0	0	0	0	0	0	0%	0	0
Dark Interior	0	0	0	0	0	0	0	0	0	0	0	0	0	0%	0	0
Framing of Driver	0	0	0	0	0	0	0	0	0	0	0	0	0	0%	0	0
Focus / Clarity of Driver	0	0	0	0	0	0	0	0	0	0	0	0	0	0%	0	0
Framing of Car	0	0	0	0	0	0	0	0	0	0	0	0	0	0%	0	0
Data/Operator Error	0	0	0	0	0	0	0	0	0	0	0	0	0	0%	0	0
Exposure	0	0	0	0	0	0	0	1	0	0	0	0	1	11%	0	0
Equipment Malfunction	0	0	0	0	0	0	0	0	0	0	8	0	8	89%	0	0
ACS Expired	0	0	0	0	0	0	0	0	0	0	0	0	0	0%	0	0
Total:	0	0	0	0	0	0	0	1	0	0	8	0	9	100%	0	0%
Summary Metrics																
Daily Average Vehicle Passes	Year to Date												Year to Date Monthly Average		2011 Monthly Average	
Average Issued Speed	249	302	279	226	255	202	303	299	484	381	451	417	321		228	
Average Issued Red Seconds	16	19	20	16	0	13	17	17	19	18	15	17	17		16	
Citation / Violation Issuance Rate	66.7	0.1	0.5	50.1	0	99.9	78.0	28.8	66.6	67.9	0.3	99.9	51		56.9	
Citation / Violation Issuance Rate	60%	3%	5%	22%	0%	8%	36%	12%	60%	50%	8%	17%	26%		38%	
Controllable Issuance Rate	100%	100%	100%	100%	0%	100%	100%	67%	100%	100%	11%	100%	89%		100%	



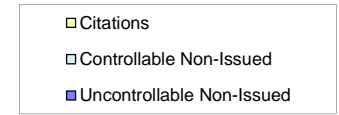
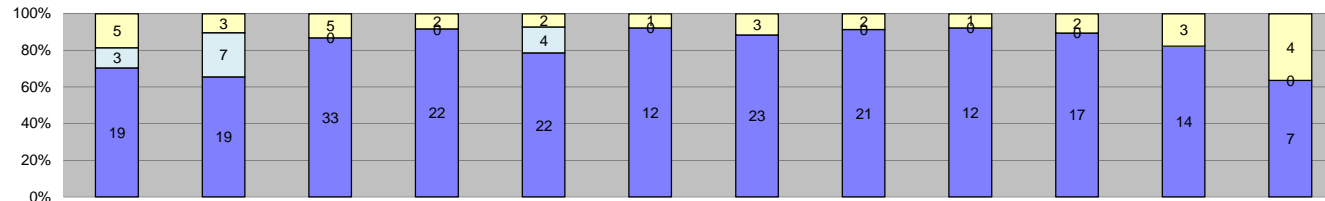
Events	Jan-12	Feb-12	Mar-12	Apr-12	May-12	Jun-12	Jul-12	Aug-12	Sep-12	Oct-12	Nov-12	Dec-12	Year to Date Monthly Average		2011 Monthly Average		
													Quantity	%	Quantity	%	
Non-Violations	549	516	570	579	580	524	527	513	514	607	443	214	511	93%	511	92%	
Violations	79	38	26	23	33	23	21	24	20	18	73	59	59	36	7%	43	8%
Total:	628	554	596	602	613	547	548	537	534	625	516	273	548	100%	554	100%	
Violations																	
Uncontrollable Non-Issued	23	33	22	18	29	16	11	18	14	13	9	6	18	28%	28	64%	
Controllable Non-Issued	52	1	0	0	0	0	0	0	0	0	59	50	41	64%	6	14%	
Citations	4	4	4	5	4	7	10	6	6	5	5	3	5	8%	9	22%	
Total:	79	38	26	23	33	23	21	24	20	18	73	59	63	100%	43	100%	
Non-Violations																	
Rear Axle Violation	0	1	0	0	1	0	4	0	0	0	0	0	2	0%	0	0%	
Emergency Vehicle	3	5	2	2	11	5	2	7	4	4	2	0	4	1%	4	1%	
Right Turn	0	0	0	0	0	0	0	0	0	0	0	0	0	0%	0	0%	
No Violation Occurred	546	510	568	577	568	519	521	506	510	603	441	214	507	99%	507	99%	
Total:	549	516	570	579	580	524	527	513	514	607	443	214	513	100%	511	100%	
Uncontrollable Non-Issued Violations																	
No Plate	4	8	0	2	4	1	3	4	1	3	2	0	3	12%	4	13%	
Out of State Plate	0	0	0	0	0	0	0	0	0	0	0	0	0	0%	1	2%	
Glare on Plate	0	1	0	0	1	0	1	0	0	0	0	0	1	4%	0	1%	
Illegible Plate	0	8	7	4	9	4	0	6	4	2	1	0	5	19%	1	5%	
Plate Obstructed	0	0	0	0	0	0	0	0	0	0	0	0	0	0%	0	1%	
Windshield Glare	1	4	3	1	1	1	1	0	0	0	1	0	2	6%	6	20%	
Driver Obstructed	1	0	0	2	2	0	1	2	2	0	0	0	2	6%	4	13%	
Car Obstructed	9	7	8	5	5	7	2	0	0	0	0	0	6	23%	7	25%	
No DMV Match Found	4	3	0	2	3	1	2	3	6	4	2	0	3	11%	2	8%	
LASD Expired	0	0	0	1	0	0	0	0	0	1	0	5	2	9%	0	0%	
LASD Return	4	2	4	1	4	2	1	3	1	3	3	1	2	9%	3	9%	
Other	0	0	0	0	0	0	0	0	0	0	0	0	0	0%	1	3%	
Total:	23	33	22	18	29	16	11	18	14	13	9	6	26	100%	28	100%	
Controllable Non-Issued Violations																	
Framing of Plate	0	0	0	0	0	0	0	0	0	0	0	0	0	0%	1	12%	
Focus / Clarity of Plate	0	0	0	0	0	0	0	0	0	0	0	0	0	0%	0	3%	
Dark Interior	0	1	0	0	0	0	0	0	0	0	0	0	1	2%	2	31%	
Framing of Driver	0	0	0	0	0	0	0	0	0	0	0	0	0	0%	0	0%	
Focus / Clarity of Driver	0	0	0	0	0	0	0	0	0	0	0	0	0	0%	0	6%	
Framing of Car	0	0	0	0	0	0	0	0	0	0	0	0	0	0%	0	3%	
Data/Operator Error	0	0	0	0	0	0	0	0	0	0	0	0	0	0%	0	0%	
Exposure	0	0	0	0	0	0	0	0	0	0	0	0	0	0%	0	0%	
Equipment Malfunction	52	0	0	0	0	0	0	0	0	0	59	50	54	98%	3	43%	
ACS Expired	0	0	0	0	0	0	0	0	0	0	0	0	0	0%	0	3%	
Total:	52	1	0	0	0	0	0	0	0	0	59	50	55	100%	6	100%	
Summary Metrics																	
Daily Average Vehicle Passes	569	529	586	554	500	451	586	506	679	761	718	671	Year to Date Monthly Average		2011 Monthly Average		
Average Issued Speed	21	18	17	19	21	19	16	18	19	18	18	18	592		536		
Average Issued Red Seconds	69.2	0.2	59.8	48.5	26.7	76.2	98.0	48.8	43.2	40.2	21.8	26.2	47		49.3		
Citation / Violation Issuance Rate	5%	11%	15%	22%	12%	30%	48%	25%	30%	28%	7%	5%	20%		20%		
Controllable Issuance Rate	7%	80%	100%	100%	100%	100%	100%	100%	100%	100%	8%	6%	75%		77%		



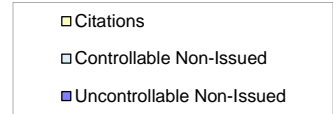
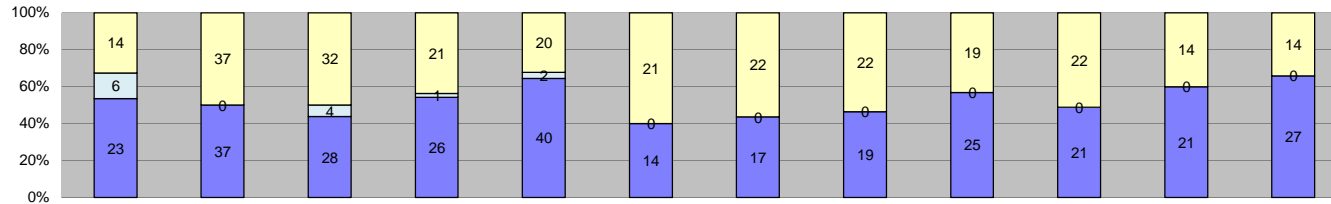
Events	Jan-12	Feb-12	Mar-12	Apr-12	May-12	Jun-12	Jul-12	Aug-12	Sep-12	Oct-12	Nov-12	Dec-12	Year to Date Monthly Average		2011 Monthly Average	
													Quantity	%	Quantity	%
Non-Violations	294	218	265	293	297	312	228	294	241	244	257	225	264	95%	385	94%
Violations	19	23	22	12	23	14	19	16	7	12	9	4	15	5%	24	6%
Total:	313	241	287	305	320	326	247	310	248	256	266	229	279	100%	408	100%
Violations																
Uncontrollable Non-Issued	13	19	20	7	19	12	14	11	4	6	7	3	11	69%	14	61%
Controllable Non-Issued	1	0	0	0	2	0	0	0	0	0	0	0	2	9%	1	5%
Citations	5	4	2	5	2	2	5	5	3	6	2	1	4	22%	8	34%
Total:	19	23	22	12	23	14	19	16	7	12	9	4	16	100%	24	100%
Non-Violations																
Rear Axle Violation	0	0	0	0	0	0	0	0	0	0	0	0	0	0%	0	0%
Emergency Vehicle	8	17	15	4	10	3	9	11	5	6	10	5	9	3%	8	2%
Right Turn	0	0	0	0	0	0	0	0	0	0	0	0	0	0%	0	0%
No Violation Occurred	286	201	250	289	287	309	219	283	236	238	247	220	255	97%	377	98%
Total:	294	218	265	293	297	312	228	294	241	244	257	225	264	100%	385	100%
Uncontrollable Non-Issued Violations																
No Plate	2	1	3	1	1	1	3	2	0	0	0	0	2	8%	3	20%
Out of State Plate	0	0	0	0	0	0	0	0	0	0	1	0	1	5%	0	3%
Glare on Plate	0	5	0	0	0	0	2	0	0	0	1	0	3	12%	1	8%
Illegible Plate	1	5	6	3	10	4	6	4	2	3	2	0	4	19%	1	4%
Plate Obstructed	0	0	0	0	0	1	0	0	0	0	0	0	1	5%	1	4%
Windshield Glare	0	0	1	0	0	0	1	0	0	1	0	0	1	5%	0	2%
Driver Obstructed	0	0	2	0	2	0	0	1	1	1	1	0	1	6%	2	12%
Car Obstructed	6	5	1	0	5	4	0	0	0	0	0	0	4	19%	4	31%
No DMV Match Found	4	1	3	1	0	1	1	3	1	0	2	1	2	8%	1	9%
LASD Expired	0	0	0	1	0	0	0	0	0	0	0	2	2	7%	0	1%
LASD Return	0	2	4	1	1	1	1	1	0	1	0	0	2	7%	1	5%
Other	0	0	0	0	0	0	0	0	0	0	0	0	0	0%	0	2%
Total:	13	19	20	7	19	12	14	11	4	6	7	3	22	100%	14	100%
Controllable Non-Issued Violations																
Framing of Plate	1	0	0	0	0	0	0	0	0	0	0	0	1	33%	1	40%
Focus / Clarity of Plate	0	0	0	0	0	0	0	0	0	0	0	0	0	0%	0	0%
Dark Interior	0	0	0	0	0	0	0	0	0	0	0	0	0	0%	0	27%
Framing of Driver	0	0	0	0	0	0	0	0	0	0	0	0	0	0%	0	20%
Focus / Clarity of Driver	0	0	0	0	0	0	0	0	0	0	0	0	0	0%	0	0%
Framing of Car	0	0	0	0	0	0	0	0	0	0	0	0	0	0%	0	13%
Data/Operator Error	0	0	0	0	0	0	0	0	0	0	0	0	0	0%	0	0%
Exposure	0	0	0	0	2	0	0	0	0	0	0	0	2	67%	0	0%
Equipment Malfunction	0	0	0	0	0	0	0	0	0	0	0	0	0	0%	0	0%
ACS Expired	0	0	0	0	0	0	0	0	0	0	0	0	0	0%	0	0%
Total:	1	0	0	0	2	0	0	0	0	0	0	0	3	100%	1	100%
Summary Metrics																
Daily Average Vehicle Passes	438	367	439	377	512	374	455	394	480	504	474	500	Year to Date Monthly Average		2011 Monthly Average	
Average Issued Speed	22	19	17	18	18	19	20	17	22	20	23	19	443		374	
Average Issued Red Seconds	95.2	77.2	99.9	63.2	81.1	99.9	19.6	61.4	55.2	69.7	0.3	99.9	69		77.8	
Citation / Violation Issuance Rate	26%	17%	9%	42%	9%	14%	26%	31%	43%	50%	22%	25%	26%		34%	
Controllable Issuance Rate	83%	100%	100%	100%	50%	100%	100%	100%	100%	100%	100%	100%	94%		86%	



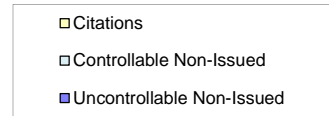
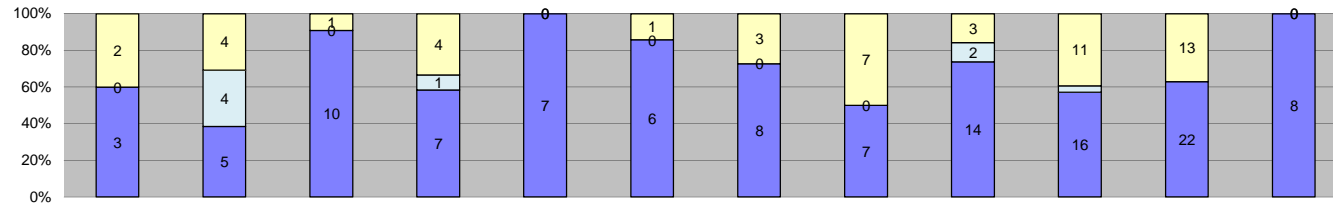
Events	Year to Date												Year to Date Monthly Average		2011 Monthly Average	
	Jan-12	Feb-12	Mar-12	Apr-12	May-12	Jun-12	Jul-12	Aug-12	Sep-12	Oct-12	Nov-12	Dec-12	Quantity	%	Quantity	%
Non-Violations	400	381	404	400	443	364	383	426	436	494	435	315	407	92%	467	89%
Violations	31	56	47	38	44	32	38	30	37	26	21	13	34	8%	55	11%
Total:	431	437	451	438	487	396	421	456	473	520	456	328	441	100%	522	100%
Violations																
Uncontrollable Non-Issued	23	43	41	28	37	25	24	19	25	19	15	10	26	73%	36	66%
Controllable Non-Issued	3	1	0	0	1	1	0	0	1	0	1	0	1	4%	4	7%
Citations	5	12	6	10	6	6	14	11	11	7	5	3	8	23%	15	27%
Total:	31	56	47	38	44	32	38	30	37	26	21	13	35	100%	55	100%
Non-Violations																
Rear Axle Violation	0	0	0	0	0	0	0	0	0	0	0	0	0	0%	0	0%
Emergency Vehicle	4	3	7	3	9	1	12	4	15	6	7	0	6	2%	6	1%
Right Turn	0	0	0	0	0	0	0	0	0	0	0	0	0	0%	0	0%
No Violation Occurred	396	378	397	397	434	363	371	422	421	488	428	315	401	98%	461	99%
Total:	400	381	404	400	443	364	383	426	436	494	435	315	407	100%	467	100%
Uncontrollable Non-Issued Violations																
No Plate	2	6	3	6	1	5	4	3	4	5	3	1	4	10%	4	11%
Out of State Plate	1	0	1	0	0	0	1	0	0	0	0	0	1	3%	0	0%
Glare on Plate	0	4	5	1	0	1	0	0	2	3	0	0	3	7%	1	3%
Illegible Plate	1	9	14	6	12	6	8	11	3	5	5	1	7	18%	0	1%
Plate Obstructed	0	1	0	0	0	0	0	0	1	0	0	0	1	3%	0	0%
Windshield Glare	2	3	2	1	3	3	5	1	1	0	1	0	2	6%	5	12%
Driver Obstructed	0	1	2	3	1	0	1	0	1	1	2	0	2	4%	4	10%
Car Obstructed	6	11	7	5	11	3	1	0	3	0	0	0	6	16%	10	28%
No DMV Match Found	3	3	3	2	3	4	1	0	4	1	2	0	3	7%	3	9%
LASD Expired	0	0	0	0	0	0	0	0	0	0	0	5	5	14%	0	0%
LASD Return	8	5	4	4	6	3	3	4	6	4	2	3	4	12%	8	21%
Other	0	0	0	0	0	0	0	0	0	0	0	0	0	0%	1	3%
Total:	23	43	41	28	37	25	24	19	25	19	15	10	37	100%	36	100%
Controllable Non-Issued Violations																
Framing of Plate	1	0	0	0	0	0	0	0	0	0	0	0	1	17%	1	13%
Focus / Clarity of Plate	0	0	0	0	0	0	0	0	0	0	1	0	1	17%	0	2%
Dark Interior	0	1	0	0	1	0	0	0	1	0	0	0	1	17%	1	32%
Framing of Driver	1	0	0	0	0	0	0	0	0	0	0	0	1	17%	1	34%
Focus / Clarity of Driver	0	0	0	0	0	0	0	0	0	0	0	0	0	0%	0	4%
Framing of Car	0	0	0	0	0	0	0	0	0	0	0	0	0	0%	0	11%
Data/Operator Error	0	0	0	0	0	0	0	0	0	0	0	0	0	0%	0	0%
Exposure	1	0	0	0	0	0	0	0	0	0	0	0	1	17%	0	0%
Equipment Malfunction	0	0	0	0	0	0	0	0	0	0	0	0	0	0%	0	4%
ACS Expired	0	0	0	0	0	1	0	0	0	0	0	0	1	17%	0	0%
Total:	3	1	0	0	1	1	0	0	1	0	1	0	6	100%	4	100%
Summary Metrics																
Daily Average Vehicle Passes	606	786	623	541	663	571	628	652	832	942	884	917	Year to Date Monthly Average		2011 Monthly Average	
Average Issued Speed	20	21	19	20	18	20	21	19	20	21	19	24	720		581	
Average Issued Red Seconds	34.6	24.5	38.4	27.0	38.0	50.3	44.5	50.8	20.5	14.7	20.5	0.5	30		35.7	
Citation / Violation Issuance Rate	16%	21%	13%	26%	14%	19%	37%	37%	30%	27%	24%	23%	24%		27%	
Controllable Issuance Rate	63%	92%	100%	100%	86%	86%	100%	100%	92%	100%	83%	100%	92%		80%	



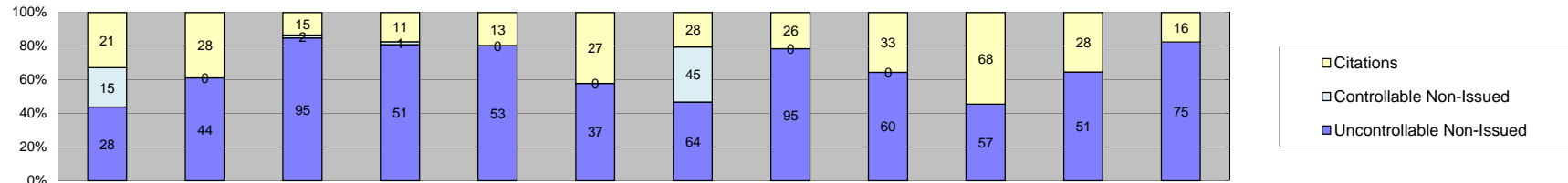
Events	Jan-12	Feb-12	Mar-12	Apr-12	May-12	Jun-12	Jul-12	Aug-12	Sep-12	Oct-12	Nov-12	Dec-12	Year to Date Monthly Average		2011 Monthly Average	
													Quantity	%	Quantity	%
Non-Violations	217	184	198	216	234	155	220	214	188	194	189	203	201	90%	261	92%
Violations	27	29	38	24	28	13	26	23	13	19	17	11	22	10%	22	8%
Total:	244	213	236	240	262	168	246	237	201	213	206	214	223	100%	283	100%
Violations																
Uncontrollable Non-Issued	19	19	33	22	22	12	23	21	12	17	14	7	18	71%	14	63%
Controllable Non-Issued	3	7	0	0	4	0	0	0	0	0	0	0	5	18%	3	15%
Citations	5	3	5	2	2	1	3	2	1	2	3	4	3	11%	5	22%
Total:	27	29	38	24	28	13	26	23	13	19	17	11	26	100%	22	100%
Non-Violations																
Rear Axle Violation	0	0	0	0	0	0	0	3	0	0	0	0	3	1%	0	0%
Emergency Vehicle	14	12	23	12	24	11	21	24	21	15	13	4	16	8%	17	6%
Right Turn	0	0	0	0	0	0	0	0	0	0	0	0	0	0%	0	0%
No Violation Occurred	203	172	175	204	210	144	199	187	167	179	176	199	185	91%	244	94%
Total:	217	184	198	216	234	155	220	214	188	194	189	203	204	100%	261	100%
Uncontrollable Non-Issued Violations																
No Plate	2	1	3	4	2	0	2	1	3	3	3	0	2	10%	2	14%
Out of State Plate	0	0	1	0	0	0	0	0	0	0	0	0	1	4%	0	1%
Glare on Plate	3	1	1	4	4	3	5	1	1	3	0	0	3	10%	1	4%
Illegible Plate	2	3	15	8	5	5	9	15	5	7	6	5	7	28%	1	4%
Plate Obstructed	0	0	0	0	2	0	0	0	0	0	0	0	2	8%	0	1%
Windshield Glare	0	3	1	1	2	2	2	0	1	1	1	0	2	6%	1	5%
Driver Obstructed	0	0	2	1	0	1	1	1	1	0	2	0	1	5%	2	12%
Car Obstructed	7	3	3	1	4	0	0	0	0	1	1	0	3	11%	5	35%
No DMV Match Found	1	1	1	1	0	0	2	1	1	1	0	2	1	5%	1	7%
LASD Expired	0	0	0	0	0	0	0	0	0	0	0	0	0	0%	0	0%
LASD Return	4	7	6	2	3	1	2	3	0	1	1	0	3	12%	2	15%
Other	0	0	0	0	0	0	0	0	0	0	0	0	0	0%	0	3%
Total:	19	19	33	22	22	12	23	21	12	17	14	7	25	100%	14	100%
Controllable Non-Issued Violations																
Framing of Plate	0	0	0	0	0	0	0	0	0	0	0	0	0	0%	1	18%
Focus / Clarity of Plate	2	0	0	0	3	0	0	0	0	0	0	0	3	22%	1	26%
Dark Interior	0	0	0	0	0	0	0	0	0	0	0	0	0	0%	1	31%
Framing of Driver	0	0	0	0	0	0	0	0	0	0	0	0	0	0%	0	3%
Focus / Clarity of Driver	1	0	0	0	0	0	0	0	0	0	0	0	1	9%	1	18%
Framing of Car	0	0	0	0	1	0	0	0	0	0	0	0	1	9%	0	5%
Data/Operator Error	0	0	0	0	0	0	0	0	0	0	0	0	0	0%	0	0%
Exposure	0	7	0	0	0	0	0	0	0	0	0	0	7	61%	0	0%
Equipment Malfunction	0	0	0	0	0	0	0	0	0	0	0	0	0	0%	0	0%
ACS Expired	0	0	0	0	0	0	0	0	0	0	0	0	0	0%	0	0%
Total:	3	7	0	0	4	0	0	0	0	0	0	0	12	100%	3	100%
Summary Metrics																
Daily Average Vehicle Passes	751	664	682	718	769	683	776	770	831	855	778	804	Year to Date Monthly Average		2011 Monthly Average	
Average Issued Speed	19	16	19	17	24	16	21	21	19	19	19	20	757		663	
Average Issued Red Seconds	57.0	48.7	62.0	50.0	50.1	0.1	43.9	68.4	99.9	32.2	57.1	44.3	51		48.8	
Citation / Violation Issuance Rate	19%	10%	13%	8%	7%	8%	12%	9%	8%	11%	18%	36%	13%		23%	
Controllable Issuance Rate	63%	30%	100%	100%	33%	100%	100%	100%	100%	100%	100%	100%	85%		64%	



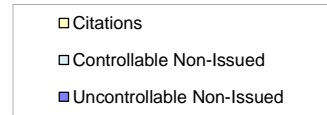
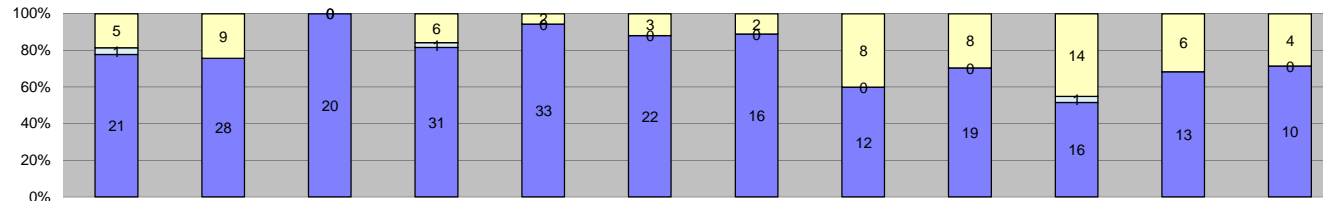
Events	2012												Year to Date Monthly Average		2011 Monthly Average	
	Jan-12	Feb-12	Mar-12	Apr-12	May-12	Jun-12	Jul-12	Aug-12	Sep-12	Oct-12	Nov-12	Dec-12	Quantity	%	Quantity	%
Non-Violations	125	120	100	104	98	86	118	89	99	85	83	92	100	68%	195	75%
Violations	43	74	64	48	62	35	39	41	44	43	35	41	47	32%	64	25%
Total:	168	194	164	152	160	121	157	130	143	128	118	133	147	100%	259	100%
Violations																
Uncontrollable Non-Issued	23	37	28	26	40	14	17	19	25	21	21	27	25	50%	32	50%
Controllable Non-Issued	6	0	4	1	2	0	0	0	0	0	0	0	3	7%	3	5%
Citations	14	37	32	21	20	21	22	22	19	22	14	14	22	43%	29	45%
Total:	43	74	64	48	62	35	39	41	44	43	35	41	50	100%	64	100%
Non-Violations																
Rear Axle Violation	0	0	0	1	1	0	1	0	0	0	0	0	1	1%	0	0%
Emergency Vehicle	6	9	3	2	10	5	8	12	13	6	4	4	7	7%	10	5%
Right Turn	0	0	0	0	0	0	0	0	0	0	0	0	0	0%	0	0%
No Violation Occurred	119	111	97	101	87	81	109	77	86	79	79	88	93	92%	185	95%
Total:	125	120	100	104	98	86	118	89	99	85	83	92	101	100%	195	100%
Uncontrollable Non-Issued Violations																
No Plate	2	7	1	2	4	1	4	2	3	2	4	6	3	10%	5	15%
Out of State Plate	0	0	0	0	0	0	0	0	0	1	0	0	1	3%	0	1%
Glare on Plate	0	1	2	2	0	0	1	0	0	1	0	0	1	4%	2	8%
Illegible Plate	2	4	7	10	11	2	3	2	2	4	4	3	5	14%	1	3%
Plate Obstructed	0	1	0	0	0	0	0	1	1	1	1	0	1	3%	1	2%
Windshield Glare	2	2	2	1	4	3	1	3	5	2	0	0	3	8%	4	11%
Driver Obstructed	2	0	0	0	3	0	0	2	1	0	0	0	2	6%	4	13%
Car Obstructed	4	4	2	2	1	1	0	1	0	0	0	0	2	7%	2	7%
No DMV Match Found	8	9	7	7	7	3	5	3	7	6	8	10	7	21%	7	22%
LASD Expired	0	0	0	0	0	2	0	0	0	1	1	5	2	7%	0	1%
LASD Return	3	9	7	2	10	2	3	5	6	3	3	3	5	15%	5	15%
Other	0	0	0	0	0	0	0	0	0	0	0	0	0	0%	1	3%
Total:	23	37	28	26	40	14	17	19	25	21	21	27	31	100%	32	100%
Controllable Non-Issued Violations																
Framing of Plate	3	0	0	0	0	0	0	0	0	0	0	0	3	42%	1	33%
Focus / Clarity of Plate	0	0	1	0	2	0	0	0	0	0	0	0	2	21%	0	8%
Dark Interior	1	0	1	0	0	0	0	0	0	0	0	0	1	14%	1	23%
Framing of Driver	0	0	0	0	0	0	0	0	0	0	0	0	0	0%	0	10%
Focus / Clarity of Driver	0	0	0	0	0	0	0	0	0	0	0	0	0	0%	0	3%
Framing of Car	0	0	0	0	0	0	0	0	0	0	0	0	0	0%	1	21%
Data/Operator Error	0	0	0	0	0	0	0	0	0	0	0	0	0	0%	0	0%
Exposure	2	0	2	1	0	0	0	0	0	0	0	0	2	23%	0	0%
Equipment Malfunction	0	0	0	0	0	0	0	0	0	0	0	0	0	0%	0	0%
ACS Expired	0	0	0	0	0	0	0	0	0	0	0	0	0	0%	0	3%
Total:	6	0	4	1	2	0	0	0	0	0	0	0	7	100%	3	100%
Summary Metrics																
Daily Average Vehicle Passes													Year to Date Monthly Average		2011 Monthly Average	
Average Issued Speed	1,161	1,210	1,217	1,131	1,281	987	1,094	1,166	1,331	1,246	1,285	1,267	1,198		1,085	
Average Issued Red Seconds	24	24	24	24	24	24	24	23	24	25	23	24	24		22	
Citation / Violation Issuance Rate	13.4	1.7	5.6	16.2	4.6	10.4	15.3	14.2	18.4	0.5	7.4	21.7	11		21.3	
Citation / Violation Issuance Rate	33%	50%	50%	44%	32%	60%	56%	54%	43%	51%	40%	34%	46%		44%	
Controllable Issuance Rate	70%	100%	89%	95%	91%	100%	100%	100%	100%	100%	100%	100%	95%		90%	



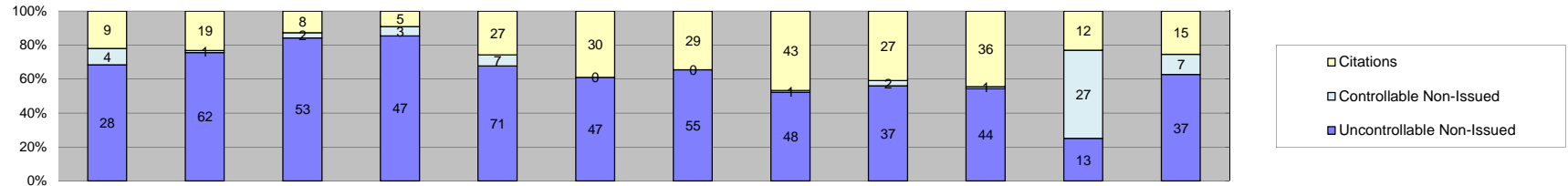
Events	Jan-12	Feb-12	Mar-12	Apr-12	May-12	Jun-12	Jul-12	Aug-12	Sep-12	Oct-12	Nov-12	Dec-12	Year to Date Monthly Average		2011 Monthly Average	
													Quantity	%	Quantity	%
Non-Violations	113	78	97	94	119	62	100	117	121	115	94	110	102	88%	123	93%
Violations	5	13	11	12	7	7	11	14	19	28	35	8	14	12%	9	7%
Total:	118	91	108	106	126	69	111	131	140	143	129	118	116	100%	133	100%
Violations																
Uncontrollable Non-Issued	3	5	10	7	7	6	8	7	14	16	22	8	9	58%	6	61%
Controllable Non-Issued	0	4	0	1	0	0	0	0	2	1	0	0	2	12%	1	7%
Citations	2	4	1	4	0	1	3	7	3	11	13	0	5	30%	3	32%
Total:	5	13	11	12	7	7	11	14	19	28	35	8	16	100%	9	100%
Non-Violations																
Rear Axle Violation	0	0	0	0	0	0	1	0	0	0	0	0	1	1%	0	0%
Emergency Vehicle	25	23	18	21	21	6	24	21	27	19	18	20	20	20%	21	17%
Right Turn	0	0	0	0	0	0	0	0	0	0	0	0	0	0%	0	0%
No Violation Occurred	88	55	79	73	98	56	75	96	94	96	76	90	81	79%	102	83%
Total:	113	78	97	94	119	62	100	117	121	115	94	110	103	100%	123	100%
Uncontrollable Non-Issued Violations																
No Plate	2	1	1	0	0	0	1	1	1	2	4	1	2	9%	0	7%
Out of State Plate	0	0	1	0	0	0	0	0	0	0	1	0	1	5%	0	3%
Glare on Plate	0	0	0	0	0	0	0	1	0	0	0	0	1	5%	0	1%
Illegible Plate	0	0	2	4	2	2	3	0	1	6	4	1	3	15%	0	0%
Plate Obstructed	0	0	0	0	1	0	0	0	0	0	0	0	1	5%	0	3%
Windshield Glare	0	0	0	0	0	0	1	0	0	0	0	0	1	5%	1	12%
Driver Obstructed	0	0	1	1	0	1	1	1	1	1	1	0	1	5%	1	22%
Car Obstructed	1	0	0	0	2	0	0	0	0	0	0	0	2	8%	2	28%
No DMV Match Found	0	1	1	0	2	1	1	2	9	7	9	3	4	20%	0	4%
LASD Expired	0	0	0	0	0	1	0	0	0	0	1	3	2	9%	0	0%
LASD Return	0	3	4	2	0	1	1	2	2	0	2	0	2	12%	1	12%
Other	0	0	0	0	0	0	0	0	0	0	0	0	0	0%	1	9%
Total:	3	5	10	7	7	6	8	7	14	16	22	8	18	100%	6	100%
Controllable Non-Issued Violations																
Framing of Plate	0	0	0	0	0	0	0	0	0	0	0	0	0	0%	0	25%
Focus / Clarity of Plate	0	0	0	0	0	0	0	0	0	0	0	0	0	0%	0	13%
Dark Interior	0	0	0	0	0	0	0	0	0	1	0	0	1	15%	0	25%
Framing of Driver	0	0	0	0	0	0	0	0	0	0	0	0	0	0%	0	13%
Focus / Clarity of Driver	0	0	0	0	0	0	0	0	0	0	0	0	0	0%	0	0%
Framing of Car	0	0	0	0	0	0	0	0	0	0	0	0	0	0%	0	25%
Data/Operator Error	0	0	0	0	0	0	0	0	0	0	0	0	0	0%	0	0%
Exposure	0	0	0	1	0	0	0	0	2	0	0	0	2	23%	0	0%
Equipment Malfunction	0	4	0	0	0	0	0	0	0	0	0	0	4	62%	0	0%
ACS Expired	0	0	0	0	0	0	0	0	0	0	0	0	0	0%	0	0%
Total:	0	4	0	1	0	0	0	0	2	1	0	0	7	100%	1	100%
Summary Metrics																
Daily Average Vehicle Passes	342	341	377	324	492	366	357	464	578	697	619	650	Year to Date Monthly Average		2011 Monthly Average	
Average Issued Speed	20	20	26	25	0	23	25	22	21	22	26	0	467		300	
Average Issued Red Seconds	94.9	55.9	0.1	50.0	0	68.9	50.3	42.9	21.2	18.6	8.3	0	41		61.8	
Citation / Violation Issuance Rate	40%	31%	9%	33%	0%	14%	27%	50%	16%	39%	37%	0%	30%		33%	
Controllable Issuance Rate	100%	50%	100%	80%	0%	100%	100%	100%	100%	92%	100%	0%	88%		82%	



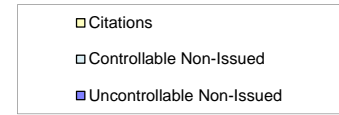
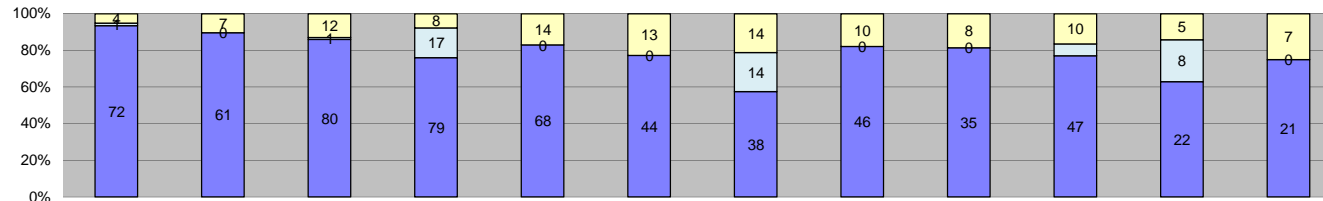
Events	Jan-12	Feb-12	Mar-12	Apr-12	May-12	Jun-12	Jul-12	Aug-12	Sep-12	Oct-12	Nov-12	Dec-12	Year to Date Monthly Average		2011 Monthly Average	
													Quantity	%	Quantity	%
Non-Violations	535	408	413	398	462	384	521	596	444	427	418	338	445	83%	829	93%
Violations	64	72	112	63	66	64	137	121	93	125	79	91	91	17%	64	7%
Total:	599	480	525	461	528	448	658	717	537	552	497	429	536	100%	893	100%
Violations																
Uncontrollable Non-Issued	28	44	95	51	53	37	64	95	60	57	51	75	59	59%	38	59%
Controllable Non-Issued	15	0	2	1	0	0	45	0	0	0	0	0	16	16%	0	0%
Citations	21	28	15	11	13	27	28	26	33	68	28	16	26	26%	26	40%
Total:	64	72	112	63	66	64	137	121	93	125	79	91	101	100%	64	100%
Non-Violations																
Rear Axle Violation	0	0	2	0	0	0	2	1	1	1	0	0	1	0%	1	0%
Emergency Vehicle	12	26	21	18	24	21	25	35	21	31	21	26	23	5%	29	4%
Right Turn	0	0	0	0	0	0	0	0	0	0	0	0	0	0%	0	0%
No Violation Occurred	523	382	390	380	438	363	494	560	422	395	397	312	421	94%	799	96%
Total:	535	408	413	398	462	384	521	596	444	427	418	338	446	100%	829	100%
Uncontrollable Non-Issued Violations																
No Plate	6	5	7	5	5	2	16	14	7	9	9	7	8	10%	5	14%
Out of State Plate	0	0	3	0	1	1	1	3	0	0	1	0	2	2%	1	2%
Glare on Plate	0	0	0	0	0	0	0	0	0	0	0	0	0	0%	0	0%
Illegible Plate	0	0	0	0	0	0	0	0	0	0	0	1	1	1%	0	0%
Plate Obstructed	0	1	1	0	2	0	0	3	1	1	2	0	2	2%	0	1%
Windshield Glare	0	1	3	8	10	2	6	13	5	4	2	0	5	7%	2	6%
Driver Obstructed	0	0	0	1	1	0	0	1	2	1	0	0	1	2%	1	2%
Car Obstructed	0	2	42	0	1	0	2	4	1	0	0	0	9	11%	1	3%
No DMV Match Found	9	13	8	8	9	6	14	13	13	23	24	14	13	17%	9	24%
LASD Expired	0	0	0	4	0	0	0	0	0	4	2	38	12	16%	0	0%
LASD Return	13	22	31	25	24	26	25	44	31	15	11	15	24	31%	15	38%
Other	0	0	0	0	0	0	0	0	0	0	0	0	0	0%	3	8%
Total:	28	44	95	51	53	37	64	95	60	57	51	75	76	100%	38	100%
Controllable Non-Issued Violations																
Framing of Plate	0	0	0	0	0	0	0	0	0	0	0	0	0	0%	0	67%
Focus / Clarity of Plate	0	0	1	0	0	0	0	0	0	0	0	0	1	3%	0	0%
Dark Interior	0	0	1	0	0	0	0	0	0	0	0	0	1	3%	0	0%
Framing of Driver	0	0	0	0	0	0	0	0	0	0	0	0	0	0%	0	0%
Focus / Clarity of Driver	0	0	0	0	0	0	0	0	0	0	0	0	0	0%	0	0%
Framing of Car	0	0	0	0	0	0	0	0	0	0	0	0	0	0%	0	33%
Data/Operator Error	0	0	0	0	0	0	0	0	0	0	0	0	0	0%	0	0%
Exposure	0	0	0	1	0	0	1	0	0	0	0	0	1	3%	0	0%
Equipment Malfunction	14	0	0	0	0	0	44	0	0	0	0	0	29	88%	0	0%
ACS Expired	1	0	0	0	0	0	0	0	0	0	0	0	1	3%	0	0%
Total:	15	0	2	1	0	0	45	0	0	0	0	0	33	100%	0	100%
Summary Metrics																
Daily Average Vehicle Passes	972	957	1,037	908	1,076	920	992	942	1,188	1,218	1,152	1,174	Year to Date Monthly Average		2011 Monthly Average	
Average Issued Speed	25	28	28	25	28	29	27	27	27	28	26	26	1,045		912	
Average Issued Red Seconds	46.8	52.0	52.1	66.9	61.8	50.5	55.2	50.7	47.8	36.5	41.6	48.5	51		51.5	
Citation / Violation Issuance Rate	33%	39%	13%	17%	20%	42%	20%	21%	35%	54%	35%	18%	29%		40%	
Controllable Issuance Rate	58%	100%	88%	92%	100%	100%	38%	100%	100%	100%	100%	100%	90%		99%	



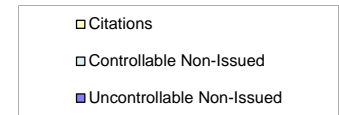
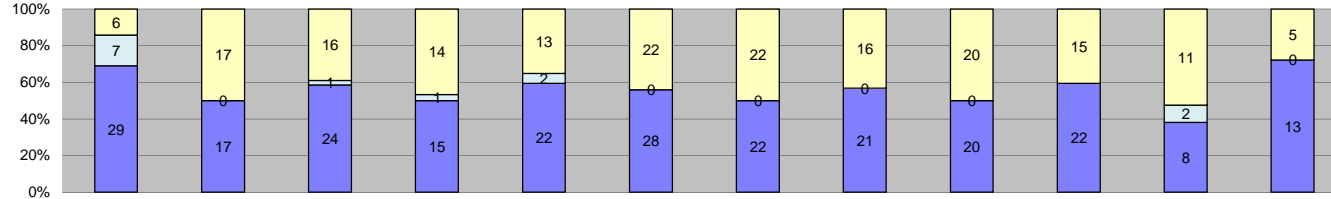
Events	Jan-12	Feb-12	Mar-12	Apr-12	May-12	Jun-12	Jul-12	Aug-12	Sep-12	Oct-12	Nov-12	Dec-12	Year to Date Monthly Average		2011 Monthly Average	
	Quantity	Quantity	Quantity	Quantity	Quantity	Quantity	Quantity	Quantity	Quantity	Quantity	Quantity	Quantity	Quantity	%	%	%
Non-Violations	131	130	140	132	137	200	139	140	146	143	118	114	139	84%	163	87%
Violations	27	37	20	38	35	25	18	20	27	31	19	14	26	16%	25	13%
Total:	158	167	160	170	172	225	157	160	173	174	137	128	165	100%	188	100%
Violations																
Uncontrollable Non-Issued	21	28	20	31	33	22	16	12	19	16	13	10	20	74%	17	69%
Controllable Non-Issued	1	0	0	1	0	0	0	0	0	1	0	0	1	4%	1	5%
Citations	5	9	0	6	2	3	2	8	8	14	6	4	6	22%	6	26%
Total:	27	37	20	38	35	25	18	20	27	31	19	14	27	100%	25	100%
Non-Violations																
Rear Axle Violation	0	0	0	0	0	0	0	0	0	0	0	0	0	0%	0	0%
Emergency Vehicle	0	1	1	1	2	0	1	3	1	0	1	0	1	1%	2	1%
Right Turn	0	0	0	0	0	0	0	0	0	0	0	0	0	0%	0	0%
No Violation Occurred	131	129	139	131	135	200	138	137	145	143	117	114	138	99%	161	99%
Total:	131	130	140	132	137	200	139	140	146	143	118	114	140	100%	163	100%
Uncontrollable Non-Issued Violations																
No Plate	2	3	1	1	1	2	4	1	1	1	2	0	2	7%	2	9%
Out of State Plate	0	0	0	0	0	0	0	1	0	0	0	0	1	4%	0	1%
Glare on Plate	0	1	0	1	1	0	0	1	0	0	0	0	1	4%	0	1%
Illegible Plate	0	3	1	3	1	5	2	2	4	2	5	2	3	10%	0	2%
Plate Obstructed	2	0	1	0	0	0	0	0	0	0	0	0	2	6%	1	3%
Windshield Glare	1	1	4	3	2	1	1	1	2	1	1	0	2	6%	2	10%
Driver Obstructed	2	2	0	6	6	1	1	2	1	2	3	0	3	10%	2	13%
Car Obstructed	1	0	1	0	2	0	0	0	0	0	0	0	1	5%	2	12%
No DMV Match Found	3	5	7	8	9	2	3	3	3	6	1	5	5	17%	2	13%
LASD Expired	0	0	0	1	0	0	0	0	0	0	1	2	1	5%	0	1%
LASD Return	10	13	5	8	11	11	4	2	8	3	0	1	7	26%	5	29%
Other	0	0	0	0	0	0	0	0	0	0	0	0	0	0%	1	7%
Total:	21	28	20	31	33	22	16	12	19	16	13	10	26	100%	17	100%
Controllable Non-Issued Violations																
Framing of Plate	0	0	0	0	0	0	0	0	0	0	0	0	0	0%	1	60%
Focus / Clarity of Plate	0	0	0	0	0	0	0	0	0	0	0	0	0	0%	0	7%
Dark Interior	1	0	0	0	0	0	0	0	0	0	0	0	1	50%	0	7%
Framing of Driver	0	0	0	0	0	0	0	0	0	0	0	0	0	0%	0	20%
Focus / Clarity of Driver	0	0	0	0	0	0	0	0	0	0	0	0	0	0%	0	0%
Framing of Car	0	0	0	0	0	0	0	0	0	0	0	0	0	0%	0	7%
Data/Operator Error	0	0	0	0	0	0	0	0	0	0	0	0	0	0%	0	0%
Exposure	0	0	0	1	0	0	0	0	0	1	0	0	1	50%	0	0%
Equipment Malfunction	0	0	0	0	0	0	0	0	0	0	0	0	0	0%	0	0%
ACS Expired	0	0	0	0	0	0	0	0	0	0	0	0	0	0%	0	0%
Total:	1	0	0	1	0	0	0	0	0	1	0	0	2	100%	1	100%
Summary Metrics																
Daily Average Vehicle Passes	802	778	901	763	889	759	774	901	983	1,044	1,008	1,033	Year to Date Monthly Average		2011 Monthly Average	
Average Issued Speed	18	20	0	16	19	19	20	23	20	20	21	20	886		725	
Average Issued Red Seconds	30.0	15.9	0	6.4	0.6	33.8	22.3	12.9	8.5	5.8	0.6	1.1	13		5.9	
Citation / Violation Issuance Rate	19%	24%	0%	16%	6%	12%	11%	40%	30%	45%	32%	29%	24%		28%	
Controllable Issuance Rate	83%	100%	0%	86%	100%	100%	100%	100%	100%	93%	100%	100%	97%		83%	



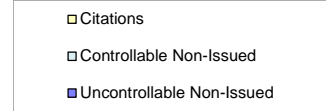
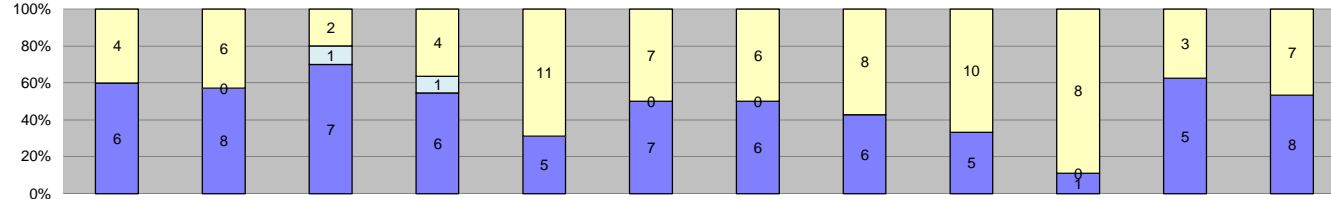
Events	Year to Date												2011 Monthly Average			
	Jan-12	Feb-12	Mar-12	Apr-12	May-12	Jun-12	Jul-12	Aug-12	Sep-12	Oct-12	Nov-12	Dec-12	Quantity	%	Quantity	%
Non-Violations	185	164	204	217	201	148	246	314	263	346	276	281	237	77%	276	78%
Violations	41	82	63	55	105	77	84	92	66	81	52	59	71	23%	80	22%
Total:	226	246	267	272	306	225	330	406	329	427	328	340	309	100%	356	100%
Violations																
Uncontrollable Non-Issued	28	62	53	47	71	47	55	48	37	44	13	37	45	62%	45	56%
Controllable Non-Issued	4	1	2	3	7	0	0	1	2	1	27	7	6	8%	12	15%
Citations	9	19	8	5	27	30	29	43	27	36	12	15	22	30%	24	30%
Total:	41	82	63	55	105	77	84	92	66	81	52	59	72	100%	80	100%
Non-Violations																
Rear Axle Violation	0	0	0	0	2	0	2	2	0	0	1	0	2	1%	1	0%
Emergency Vehicle	5	3	9	10	10	2	9	11	6	10	3	5	7	3%	13	5%
Right Turn	0	0	0	0	0	0	0	0	0	0	0	0	0	0%	0	0%
No Violation Occurred	180	161	195	207	189	146	235	301	257	336	272	276	230	96%	262	95%
Total:	185	164	204	217	201	148	246	314	263	346	276	281	238	100%	276	100%
Uncontrollable Non-Issued Violations																
No Plate	7	8	6	11	9	4	11	14	2	7	5	5	7	13%	9	20%
Out of State Plate	0	0	0	0	2	1	0	2	2	0	1	0	2	3%	1	3%
Glare on Plate	0	8	2	0	1	0	4	5	5	6	1	0	4	7%	1	2%
Illegible Plate	3	12	17	5	14	7	11	13	10	14	2	1	9	15%	0	1%
Plate Obstructed	0	0	2	2	1	1	0	1	0	0	2	0	2	3%	1	1%
Windshield Glare	0	0	0	1	8	1	1	0	0	0	0	0	3	5%	2	4%
Driver Obstructed	0	3	0	0	5	0	4	1	1	2	1	0	2	4%	3	8%
Car Obstructed	3	0	5	5	3	2	2	1	4	2	0	0	3	5%	5	10%
No DMV Match Found	4	6	7	3	8	9	7	10	5	6	1	9	6	11%	6	14%
LASD Expired	0	0	0	3	0	0	0	0	0	3	0	18	8	14%	0	0%
LASD Return	11	25	14	17	20	22	15	1	8	4	0	4	13	22%	14	31%
Other	0	0	0	0	0	0	0	0	0	0	0	0	0	0%	3	6%
Total:	28	62	53	47	71	47	55	48	37	44	13	37	59	100%	45	100%
Controllable Non-Issued Violations																
Framing of Plate	1	0	1	0	0	0	0	0	0	0	0	0	1	4%	4	35%
Focus / Clarity of Plate	0	0	0	0	0	0	0	0	0	0	0	0	0	0%	0	2%
Dark Interior	0	0	0	0	0	0	0	0	0	0	0	0	0	0%	0	1%
Framing of Driver	3	0	1	2	0	0	0	1	2	1	0	0	2	7%	7	59%
Focus / Clarity of Driver	0	0	0	0	0	0	0	0	0	0	0	0	0	0%	0	0%
Framing of Car	0	0	0	0	1	0	0	0	0	0	0	0	1	4%	0	2%
Data/Operator Error	0	0	0	0	0	0	0	0	0	0	17	7	12	49%	0	0%
Exposure	0	0	0	1	6	0	0	0	0	0	0	0	4	14%	0	0%
Equipment Malfunction	0	1	0	0	0	0	0	0	0	0	10	0	6	22%	0	0%
ACS Expired	0	0	0	0	0	0	0	0	0	0	0	0	0	0%	0	1%
Total:	4	1	2	3	7	0	0	1	2	1	27	7	25	100%	12	100%
Summary Metrics																
Daily Average Vehicle Passes	1,165	1,176	1,393	1,233	1,460	992	1,466	1,492	1,460	1,632	1,551	1,595	Year to Date Monthly Average		2011 Monthly Average	
Average Issued Speed	19	19	18	19	18	18	19	18	19	19	19	21	19		18	
Average Issued Red Seconds	12.8	6.8	22.7	0.4	27.0	11.3	3.2	2.8	0.5	6.7	13.0	2.7	9		31.6	
Citation / Violation Issuance Rate	22%	23%	13%	9%	26%	39%	35%	47%	41%	44%	23%	25%	29%		30%	
Controllable Issuance Rate	69%	95%	80%	63%	79%	100%	100%	98%	93%	97%	31%	68%	81%		66%	



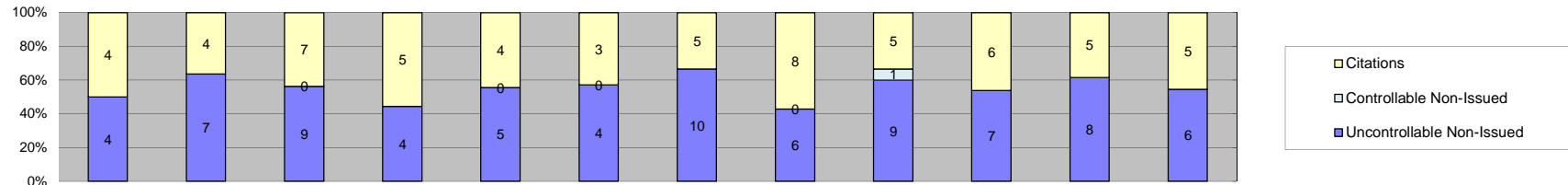
Events	2012												Year to Date Monthly Average		2011 Monthly Average	
	Jan-12	Feb-12	Mar-12	Apr-12	May-12	Jun-12	Jul-12	Aug-12	Sep-12	Oct-12	Nov-12	Dec-12	Quantity	%	Quantity	%
Non-Violations	574	412	603	490	473	409	584	577	476	544	590	623	530	89%	638	89%
Violations	77	68	93	104	82	57	66	56	43	61	35	28	64	11%	81	11%
Total:	651	480	696	594	555	466	650	633	519	605	625	651	594	100%	719	100%
Violations																
Uncontrollable Non-Issued	72	61	80	79	68	44	38	46	35	47	22	21	51	75%	68	84%
Controllable Non-Issued	1	0	1	17	0	0	14	0	0	4	8	0	8	11%	2	3%
Citations	4	7	12	8	14	13	14	10	8	10	5	7	9	14%	11	13%
Total:	77	68	93	104	82	57	66	56	43	61	35	28	68	100%	81	100%
Non-Violations																
Rear Axle Violation	0	0	0	0	0	0	0	2	0	0	0	0	2	0%	0	0%
Emergency Vehicle	3	3	1	3	2	4	0	5	5	3	4	3	3	1%	5	1%
Right Turn	0	0	0	0	0	0	0	0	0	0	0	0	0	0%	0	0%
No Violation Occurred	571	409	602	487	471	405	584	570	471	541	586	620	526	99%	633	99%
Total:	574	412	603	490	473	409	584	577	476	544	590	623	532	100%	638	100%
Uncontrollable Non-Issued Violations																
No Plate	6	3	4	5	5	3	1	6	4	5	1	0	4	6%	3	4%
Out of State Plate	1	1	2	0	0	1	0	0	0	1	0	1	1	2%	0	0%
Glare on Plate	0	0	0	1	1	0	0	0	0	0	0	0	1	2%	0	0%
Illegible Plate	0	18	16	16	13	13	20	26	17	21	11	9	16	26%	1	1%
Plate Obstructed	0	2	1	4	3	0	0	0	1	1	0	0	2	3%	1	1%
Windshield Glare	3	4	3	0	5	3	1	4	2	5	4	0	3	5%	4	6%
Driver Obstructed	3	2	3	5	5	2	1	0	3	4	1	0	3	5%	5	8%
Car Obstructed	38	20	36	32	19	9	4	3	1	0	0	0	18	29%	35	52%
No DMV Match Found	3	4	11	6	7	6	6	4	3	6	2	4	5	8%	5	7%
LASD Expired	0	0	0	3	0	1	0	0	0	1	1	4	2	3%	0	0%
LASD Return	18	7	4	7	10	6	5	3	4	3	2	3	6	10%	10	15%
Other	0	0	0	0	0	0	0	0	0	0	0	0	0	0%	3	4%
Total:	72	61	80	79	68	44	38	46	35	47	22	21	62	100%	68	100%
Controllable Non-Issued Violations																
Framing of Plate	0	0	0	0	0	0	0	0	0	0	0	0	0	0%	1	52%
Focus / Clarity of Plate	0	0	1	0	0	0	0	0	0	0	0	0	1	6%	0	7%
Dark Interior	1	0	0	0	0	0	0	0	0	4	6	0	4	23%	1	28%
Framing of Driver	0	0	0	0	0	0	0	0	0	0	0	0	0	0%	0	0%
Focus / Clarity of Driver	0	0	0	0	0	0	0	0	0	0	0	0	0	0%	0	0%
Framing of Car	0	0	0	0	0	0	0	0	0	0	0	0	0	0%	0	14%
Data/Operator Error	0	0	0	0	0	0	0	0	0	0	0	0	0	0%	0	0%
Exposure	0	0	0	0	0	0	0	0	0	0	0	0	0	0%	0	0%
Equipment Malfunction	0	0	0	17	0	0	14	0	0	0	2	0	11	70%	0	0%
ACS Expired	0	0	0	0	0	0	0	0	0	0	0	0	0	0%	0	0%
Total:	1	0	1	17	0	0	14	0	0	4	8	0	16	100%	2	100%
Summary Metrics																
Daily Average Vehicle Passes													Year to Date Monthly Average		2011 Monthly Average	
Average Issued Speed	1,249	1,239	1,316	1,071	1,228	1,090	1,173	1,088	1,290	1,342	1,322	1,333	1,228		1,093	
Average Issued Red Seconds	16	18	19	17	18	18	17	18	19	19	16	18	18		18	
Average Issued Red Seconds	15.8	0.3	7.4	2.5	8.7	7.5	17.1	19.7	18.8	7.4	0.4	2.2	9		15.6	
Citation / Violation Issuance Rate	5%	10%	13%	8%	17%	23%	21%	18%	19%	16%	14%	25%	16%		13%	
Controllable Issuance Rate	80%	100%	92%	32%	100%	100%	50%	100%	100%	71%	38%	100%	80%		79%	



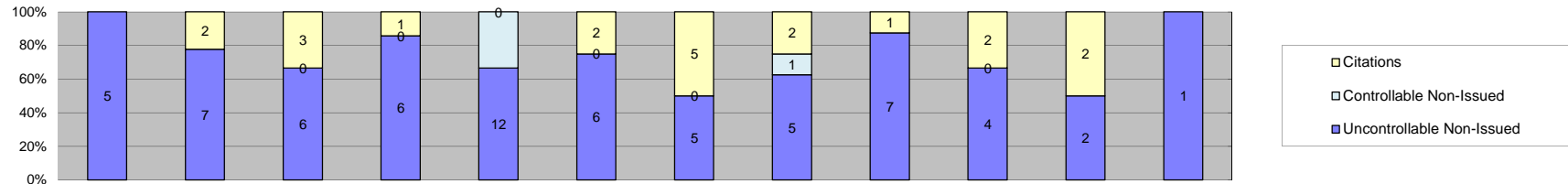
Events	Jan-12	Feb-12	Mar-12	Apr-12	May-12	Jun-12	Jul-12	Aug-12	Sep-12	Oct-12	Nov-12	Dec-12	Year to Date Monthly Average		2011 Monthly Average		
	Quantity	Quantity	Quantity	Quantity	Quantity	Quantity	Quantity	Quantity	Quantity	Quantity	Quantity	Quantity	Quantity	%	%	%	
Non-Violations	27	25	29	24	25	30	30	51	29	27	14	29	28	44%	68	54%	
Violations	42	34	41	30	37	50	44	37	40	37	21	18	36	56%	59	46%	
Total:	69	59	70	54	62	80	74	88	69	64	35	47	64	100%	127	100%	
Violations																	
Uncontrollable Non-Issued	29	17	24	15	22	28	22	21	20	22	8	13	20	54%	38	65%	
Controllable Non-Issued	7	0	1	1	2	0	0	0	0	0	2	0	3	7%	1	2%	
Citations	6	17	16	14	13	22	22	16	20	15	11	5	15	39%	19	33%	
Total:	42	34	41	30	37	50	44	37	40	37	21	18	37	100%	59	100%	
Non-Violations																	
Rear Axle Violation	0	0	0	0	0	0	0	0	0	0	0	0	0	0%	0	0%	
Emergency Vehicle	9	10	13	7	11	4	10	17	10	11	6	11	10	35%	16	23%	
Right Turn	0	0	0	0	0	0	0	0	0	0	0	0	0	0%	0	0%	
No Violation Occurred	18	15	16	17	14	26	20	34	19	16	8	18	18	65%	52	77%	
Total:	27	25	29	24	25	30	30	51	29	27	14	29	28	100%	68	100%	
Uncontrollable Non-Issued Violations																	
No Plate	3	2	5	1	2	3	2	3	1	8	2	2	3	11%	6	16%	
Out of State Plate	0	0	0	1	1	0	0	0	0	0	1	0	1	4%	1	2%	
Glare on Plate	0	1	0	0	0	0	0	0	0	1	0	0	1	4%	0	0%	
Illegible Plate	2	0	1	1	1	3	1	0	2	0	0	0	2	6%	1	2%	
Plate Obstructed	1	0	1	1	0	0	1	1	0	1	0	0	1	4%	1	1%	
Windshield Glare	1	1	0	0	1	1	2	0	1	0	0	0	1	4%	2	6%	
Driver Obstructed	1	1	2	2	2	1	5	3	2	1	0	0	2	8%	5	12%	
Car Obstructed	0	0	0	0	1	0	0	0	0	0	1	0	1	4%	1	3%	
No DMV Match Found	8	4	9	5	6	10	5	12	8	9	3	5	7	27%	10	26%	
LASD Expired	0	0	0	1	0	2	0	0	0	1	1	5	2	8%	0	0%	
LASD Return	13	8	6	3	8	8	6	2	6	1	0	1	6	22%	11	29%	
Other	0	0	0	0	0	0	0	0	0	0	0	0	0	0%	1	3%	
Total:	29	17	24	15	22	28	22	21	20	22	8	13	26	100%	38	100%	
Controllable Non-Issued Violations																	
Framing of Plate	0	0	0	0	0	0	0	0	0	0	0	0	0	0%	0	42%	
Focus / Clarity of Plate	0	0	0	0	0	0	0	0	0	0	0	0	0	0%	0	8%	
Dark Interior	0	0	0	0	0	0	0	0	0	0	1	0	1	16%	0	42%	
Framing of Driver	0	0	0	0	0	0	0	0	0	0	0	0	0	0%	0	0%	
Focus / Clarity of Driver	0	0	0	0	0	0	0	0	0	0	0	0	0	0%	0	0%	
Framing of Car	0	0	0	0	0	0	0	0	0	0	0	0	0	0%	0	8%	
Data/Operator Error	0	0	0	0	0	0	0	0	0	0	0	0	0	0%	0	0%	
Exposure	0	0	1	1	2	0	0	0	0	0	0	0	1	21%	0	0%	
Equipment Malfunction	7	0	0	0	0	0	0	0	0	0	1	0	4	63%	0	0%	
ACS Expired	0	0	0	0	0	0	0	0	0	0	0	0	0	0%	0	0%	
Total:	7	0	1	1	2	0	0	0	0	0	2	0	6	100%	1	100%	
Summary Metrics																	
Daily Average Vehicle Passes	1,872	1,528	1,756	1,714	1,772	1,648	1,630	1,663	1,837	1,817	1,708	1,748	Year to Date Monthly Average		2011 Monthly Average		
Average Issued Speed	16	16	16	17	17	17	17	17	16	17	16	15	1,724		1,570		
Average Issued Red Seconds	45.6	34.1	31.9	20.4	22.7	19.9	17.2	23.9	20.7	12.9	18.7	41.3	26		43.8		
Citation / Violation Issuance Rate	14%	50%	39%	47%	35%	44%	50%	43%	50%	41%	52%	28%	41%		33%		
Controllable Issuance Rate	46%	100%	94%	93%	87%	100%	100%	100%	100%	100%	85%	100%	92%		95%		



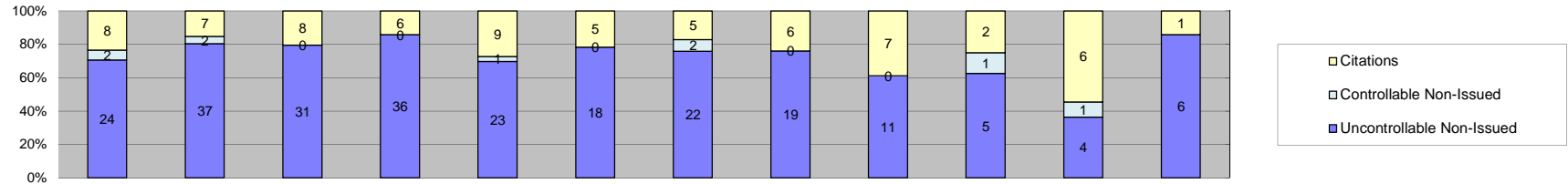
Events	Jan-12												Year to Date Monthly Average		2011 Monthly Average	
	Jan-12	Feb-12	Mar-12	Apr-12	May-12	Jun-12	Jul-12	Aug-12	Sep-12	Oct-12	Nov-12	Dec-12	Quantity	%	Quantity	%
Non-Violations	143	135	119	114	115	96	159	141	149	128	111	137	129	91%	239	95%
Violations	10	14	10	11	16	14	12	14	15	9	8	15	12	9%	13	5%
Total:	153	149	129	125	131	110	171	155	164	137	119	152	141	100%	252	100%
Violations																
Uncontrollable Non-Issued	6	8	7	6	5	7	6	6	5	1	5	8	6	44%	7	51%
Controllable Non-Issued	0	0	1	1	0	0	0	0	0	0	0	0	1	8%	1	4%
Citations	4	6	2	4	11	7	6	8	10	8	3	7	6	48%	6	45%
Total:	10	14	10	11	16	14	12	14	15	9	8	15	13	100%	13	100%
Non-Violations																
Rear Axle Violation	0	0	0	0	0	0	0	0	0	0	0	0	0	0%	0	0%
Emergency Vehicle	1	5	4	1	2	1	1	1	1	0	1	2	2	1%	2	1%
Right Turn	0	0	0	0	0	0	0	0	0	0	0	0	0	0%	0	0%
No Violation Occurred	142	130	115	113	113	95	158	140	148	128	110	135	127	99%	238	99%
Total:	143	135	119	114	115	96	159	141	149	128	111	137	129	100%	239	100%
Uncontrollable Non-Issued Violations																
No Plate	0	2	0	0	0	0	2	0	0	1	0	0	2	11%	1	9%
Out of State Plate	0	0	3	0	0	0	0	1	0	0	0	0	2	14%	0	3%
Glare on Plate	0	0	0	0	0	0	0	0	0	0	0	0	0	0%	0	0%
Illegible Plate	1	1	1	0	0	0	1	1	1	0	1	0	1	7%	0	0%
Plate Obstructed	0	0	0	0	0	0	0	0	1	0	0	0	1	7%	0	3%
Windshield Glare	1	0	0	0	0	1	0	0	0	0	0	0	1	7%	0	4%
Driver Obstructed	0	0	0	0	0	0	0	0	0	0	1	0	1	7%	0	4%
Car Obstructed	2	2	0	1	1	1	1	1	0	0	0	0	1	9%	3	44%
No DMV Match Found	1	2	1	4	4	3	1	3	3	0	3	6	3	19%	2	31%
LASD Expired	0	0	0	1	0	0	0	0	0	0	0	2	2	10%	0	0%
LASD Return	1	1	2	0	0	2	1	0	0	0	0	0	1	10%	0	3%
Other	0	0	0	0	0	0	0	0	0	0	0	0	0	0%	0	1%
Total:	6	8	7	6	5	7	6	6	5	1	5	8	15	100%	7	100%
Controllable Non-Issued Violations																
Framing of Plate	0	0	0	1	0	0	0	0	0	0	0	0	1	50%	0	67%
Focus / Clarity of Plate	0	0	0	0	0	0	0	0	0	0	0	0	0	0%	0	0%
Dark Interior	0	0	1	0	0	0	0	0	0	0	0	0	1	50%	0	0%
Framing of Driver	0	0	0	0	0	0	0	0	0	0	0	0	0	0%	0	17%
Focus / Clarity of Driver	0	0	0	0	0	0	0	0	0	0	0	0	0	0%	0	0%
Framing of Car	0	0	0	0	0	0	0	0	0	0	0	0	0	0%	0	0%
Data/Operator Error	0	0	0	0	0	0	0	0	0	0	0	0	0	0%	0	0%
Exposure	0	0	0	0	0	0	0	0	0	0	0	0	0	0%	0	17%
Equipment Malfunction	0	0	0	0	0	0	0	0	0	0	0	0	0	0%	0	0%
ACS Expired	0	0	0	0	0	0	0	0	0	0	0	0	0	0%	0	0%
Total:	0	0	1	1	0	0	0	0	0	0	0	0	2	100%	1	100%
Summary Metrics																
Daily Average Vehicle Passes	1,081	982	1,030	988	1,107	908	1,165	940	1,027	974	951	967	Year to Date Monthly Average		2011 Monthly Average	
Average Issued Speed	22	20	19	21	21	19	19	20	20	22	19	19	1,010		917	
Average Issued Red Seconds	24.5	21.2	0.7	0.4	18.7	15.4	33.6	49.1	50.2	17.0	0.4	46.7	23		27.8	
Citation / Violation Issuance Rate	40%	43%	20%	36%	69%	50%	50%	57%	67%	89%	38%	47%	50%		46%	
Controllable Issuance Rate	100%	100%	67%	80%	100%	100%	100%	100%	100%	100%	100%	100%	96%		92%	



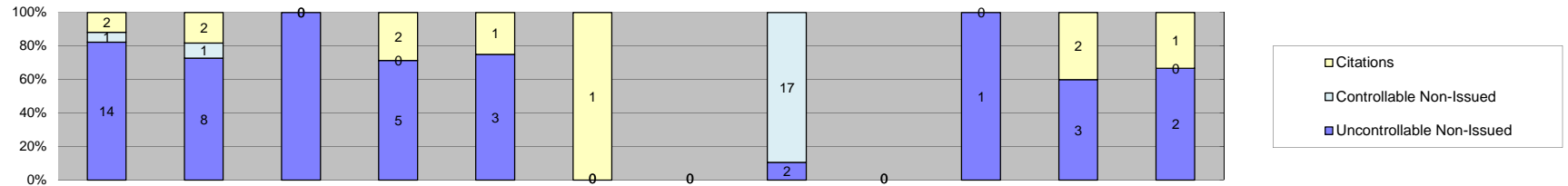
Events	Jan-12	Feb-12	Mar-12	Apr-12	May-12	Jun-12	Jul-12	Aug-12	Sep-12	Oct-12	Nov-12	Dec-12	Year to Date Monthly Average		2011 Monthly Average	
													Quantity	%	Quantity	%
Non-Violations	121	84	89	68	77	69	91	96	104	86	90	87	89	88%	185	95%
Violations	8	11	16	9	9	7	15	14	15	13	13	11	12	12%	10	5%
Total:	129	95	105	77	86	76	106	110	119	99	103	98	100	100%	195	100%
Violations																
Uncontrollable Non-Issued	4	7	9	4	5	4	10	6	9	7	8	6	7	52%	5	54%
Controllable Non-Issued	0	0	0	0	0	0	0	0	1	0	0	0	1	8%	0	4%
Citations	4	4	7	5	4	3	5	8	5	6	5	5	5	40%	4	41%
Total:	8	11	16	9	9	7	15	14	15	13	13	11	13	100%	10	100%
Non-Violations																
Rear Axle Violation	0	0	0	0	0	0	0	0	0	0	0	0	0	0%	0	0%
Emergency Vehicle	1	1	1	1	0	1	0	2	2	0	3	0	2	2%	1	1%
Right Turn	0	0	0	0	0	0	0	0	0	0	0	0	0	0%	0	0%
No Violation Occurred	120	83	88	67	77	68	91	94	102	86	87	87	88	98%	183	99%
Total:	121	84	89	68	77	69	91	96	104	86	90	87	89	100%	185	100%
Uncontrollable Non-Issued Violations																
No Plate	0	1	0	0	0	0	4	0	1	1	2	1	2	11%	1	17%
Out of State Plate	0	0	0	1	0	0	0	0	0	0	0	0	1	6%	0	2%
Glare on Plate	0	0	0	0	0	0	0	0	0	0	1	0	1	6%	0	0%
Illegible Plate	0	4	0	1	0	2	3	2	1	1	0	1	2	12%	0	0%
Plate Obstructed	0	0	0	0	0	0	1	0	0	0	0	0	1	6%	0	2%
Windshield Glare	0	0	0	1	0	0	0	0	0	0	0	0	1	6%	0	5%
Driver Obstructed	0	1	1	0	0	0	0	1	0	0	0	0	1	6%	0	8%
Car Obstructed	1	0	4	0	1	0	0	0	0	0	0	0	2	13%	1	19%
No DMV Match Found	2	1	2	0	0	1	1	2	5	1	2	0	2	12%	2	33%
LASD Expired	0	0	0	1	0	0	0	0	0	0	2	1	1	8%	0	2%
LASD Return	1	0	2	0	4	1	1	1	2	4	1	3	2	13%	1	13%
Other	0	0	0	0	0	0	0	0	0	0	0	0	0	0%	0	0%
Total:	4	7	9	4	5	4	10	6	9	7	8	6	16	100%	5	100%
Controllable Non-Issued Violations																
Framing of Plate	0	0	0	0	0	0	0	0	0	0	0	0	0	0%	0	20%
Focus / Clarity of Plate	0	0	0	0	0	0	0	0	0	0	0	0	0	0%	0	0%
Dark Interior	0	0	0	0	0	0	0	0	0	0	0	0	0	0%	0	0%
Framing of Driver	0	0	0	0	0	0	0	0	0	0	0	0	0	0%	0	20%
Focus / Clarity of Driver	0	0	0	0	0	0	0	0	0	0	0	0	0	0%	0	0%
Framing of Car	0	0	0	0	0	0	0	0	1	0	0	0	1	100%	0	0%
Data/Operator Error	0	0	0	0	0	0	0	0	0	0	0	0	0	0%	0	0%
Exposure	0	0	0	0	0	0	0	0	0	0	0	0	0	0%	0	0%
Equipment Malfunction	0	0	0	0	0	0	0	0	0	0	0	0	0	0%	0	60%
ACS Expired	0	0	0	0	0	0	0	0	0	0	0	0	0	0%	0	0%
Total:	0	0	0	0	0	0	0	0	1	0	0	0	1	100%	0	100%
Summary Metrics																
Daily Average Vehicle Passes	692	633	728	658	679	642	705	639	727	702	675	751	Year to Date Monthly Average		2011 Monthly Average	
Average Issued Speed	19	23	21	18	20	20	21	21	23	20	19	18	686		604	
Average Issued Red Seconds	28.0	0.6	29.0	99.9	0.4	33.4	0.7	37.7	8.1	30.2	1.5	26.0	25		23.0	
Citation / Violation Issuance Rate	50%	36%	44%	56%	44%	43%	33%	57%	33%	46%	38%	45%	44%		41%	
Controllable Issuance Rate	100%	100%	100%	100%	100%	100%	100%	100%	83%	100%	100%	100%	99%		86%	



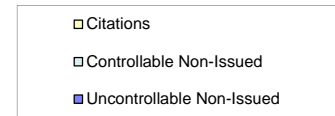
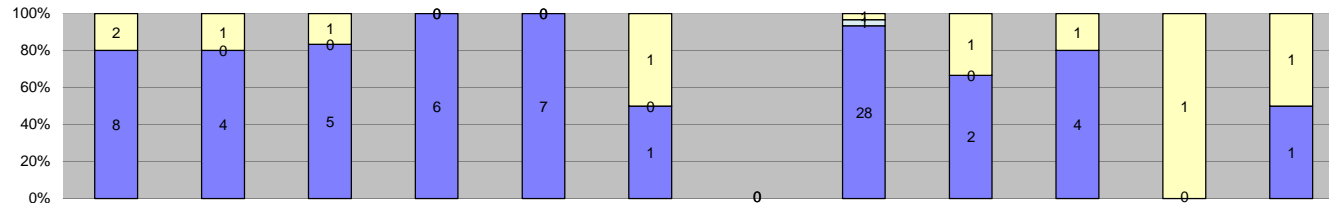
Events	Jan-12	Feb-12	Mar-12	Apr-12	May-12	Jun-12	Jul-12	Aug-12	Sep-12	Oct-12	Nov-12	Dec-12	Year to Date Monthly Average		2011 Monthly Average	
													Quantity	%	Quantity	%
Non-Violations	409	390	387	405	443	399	473	457	489	526	446	476	442	98%	435	98%
Violations	5	9	9	7	18	8	10	8	8	6	4	1	8	2%	10	2%
Total:	414	399	396	412	461	407	483	465	497	532	450	477	449	100%	445	100%
Violations																
Uncontrollable Non-Issued	5	7	6	6	12	6	5	5	7	4	2	1	6	49%	7	77%
Controllable Non-Issued	0	0	0	0	6	0	0	1	0	0	0	0	4	31%	1	5%
Citations	0	2	3	1	0	2	5	2	1	2	2	0	2	20%	2	18%
Total:	5	9	9	7	18	8	10	8	8	6	4	1	11	100%	10	100%
Non-Violations																
Rear Axle Violation	0	0	0	0	0	0	0	0	0	0	0	0	0	0%	0	0%
Emergency Vehicle	6	5	4	0	7	2	4	7	2	1	4	2	4	1%	2	0%
Right Turn	0	0	0	0	0	0	0	0	0	0	0	0	0	0%	0	0%
No Violation Occurred	403	385	383	405	436	397	469	450	487	525	442	474	438	99%	433	100%
Total:	409	390	387	405	443	399	473	457	489	526	446	476	442	100%	435	100%
Uncontrollable Non-Issued Violations																
No Plate	0	2	0	1	1	0	0	1	1	1	0	0	1	8%	1	8%
Out of State Plate	0	0	0	0	0	0	0	0	0	0	1	0	1	7%	0	0%
Glare on Plate	0	0	0	0	1	0	0	0	0	0	0	0	1	7%	0	0%
Illegible Plate	1	1	0	1	1	2	1	1	4	0	0	0	2	10%	0	0%
Plate Obstructed	0	0	0	0	0	1	0	0	0	0	0	0	1	7%	0	0%
Windshield Glare	0	0	0	0	0	0	1	0	0	1	0	0	1	7%	0	0%
Driver Obstructed	0	2	0	1	1	0	0	0	0	0	0	0	1	9%	0	2%
Car Obstructed	3	2	6	3	8	3	2	2	0	0	0	0	4	25%	7	81%
No DMV Match Found	0	0	0	0	0	0	1	0	1	1	0	0	1	7%	0	2%
LASD Expired	0	0	0	0	0	0	0	0	0	0	0	1	1	7%	0	0%
LASD Return	1	0	0	0	0	0	0	1	1	1	1	0	1	7%	0	5%
Other	0	0	0	0	0	0	0	0	0	0	0	0	0	0%	0	1%
Total:	5	7	6	6	12	6	5	5	7	4	2	1	15	100%	8	100%
Controllable Non-Issued Violations																
Framing of Plate	0	0	0	0	0	0	0	0	0	0	0	0	0	0%	0	33%
Focus / Clarity of Plate	0	0	0	0	0	0	0	0	0	0	0	0	0	0%	0	0%
Dark Interior	0	0	0	0	0	0	0	0	0	0	0	0	0	0%	0	0%
Framing of Driver	0	0	0	0	0	0	0	0	0	0	0	0	0	0%	0	33%
Focus / Clarity of Driver	0	0	0	0	0	0	0	0	0	0	0	0	0	0%	0	0%
Framing of Car	0	0	0	0	0	0	0	0	0	0	0	0	0	0%	0	0%
Data/Operator Error	0	0	0	0	0	0	0	0	0	0	0	0	0	0%	0	0%
Exposure	0	0	0	0	6	0	0	1	0	0	0	0	4	100%	0	33%
Equipment Malfunction	0	0	0	0	0	0	0	0	0	0	0	0	0	0%	0	0%
ACS Expired	0	0	0	0	0	0	0	0	0	0	0	0	0	0%	0	0%
Total:	0	0	0	0	6	0	0	1	0	0	0	0	4	100%	1	100%
Summary Metrics																
Daily Average Vehicle Passes	192	185	211	181	234	201	184	185	230	217	220	228	Year to Date Monthly Average		2011 Monthly Average	
Average Issued Speed	0	18	18	17	0	19	20	22	18	17	18	0	206		185	
Average Issued Red Seconds	0	50.3	99.9	99.9	0	99.9	60.0	50.1	99.9	89.3	77.8	0	81		67	
Citation / Violation Issuance Rate	0%	22%	33%	14%	0%	25%	50%	25%	13%	33%	50%	0%	30%		25%	
Controllable Issuance Rate	0%	100%	100%	100%	0%	100%	100%	67%	100%	100%	100%	0%	96%		68%	



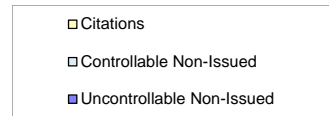
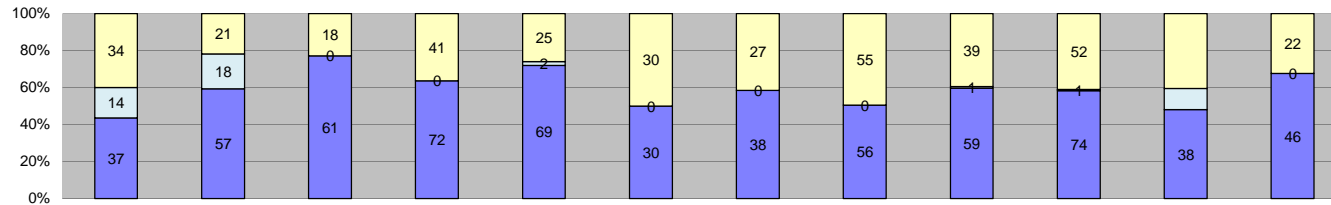
Events	Jan-12	Feb-12	Mar-12	Apr-12	May-12	Jun-12	Jul-12	Aug-12	Sep-12	Oct-12	Nov-12	Dec-12	Year to Date Monthly Average		2011 Monthly Average	
													Quantity	%	Quantity	%
Non-Violations	715	724	799	714	786	684	878	773	685	726	680	843	751	97%	742	95%
Violations	34	46	39	42	33	23	29	25	18	8	11	7	26	3%	35	5%
Total:	749	770	838	756	819	707	907	798	703	734	691	850	777	100%	778	100%
Violations																
Uncontrollable Non-Issued	24	37	31	36	23	18	22	19	11	5	4	6	20	73%	22	63%
Controllable Non-Issued	2	2	0	0	1	0	2	0	0	1	1	0	2	6%	4	11%
Citations	8	7	8	6	9	5	5	6	7	2	6	1	6	22%	9	26%
Total:	34	46	39	42	33	23	29	25	18	8	11	7	27	100%	35	100%
Non-Violations																
Rear Axle Violation	1	0	0	0	0	0	0	0	0	0	0	1	1	0%	0	0%
Emergency Vehicle	10	4	7	7	11	8	1	4	3	1	1	2	5	1%	3	0%
Right Turn	0	0	0	0	0	0	0	0	0	0	0	0	0	0%	0	0%
No Violation Occurred	704	720	792	707	775	676	877	769	682	725	679	840	746	99%	739	100%
Total:	715	724	799	714	786	684	878	773	685	726	680	843	751	100%	742	100%
Uncontrollable Non-Issued Violations																
No Plate	3	3	5	4	2	2	2	3	3	1	0	1	3	9%	3	12%
Out of State Plate	0	0	1	0	1	0	3	1	1	0	0	0	1	5%	0	2%
Glare on Plate	0	1	0	3	0	1	1	2	1	0	0	0	2	5%	0	0%
Illegible Plate	1	3	8	10	8	7	6	8	3	2	1	1	5	17%	0	1%
Plate Obstructed	0	0	0	0	0	0	0	0	0	0	0	0	0	0%	0	0%
Windshield Glare	1	4	2	3	1	1	3	0	0	0	0	0	2	8%	1	5%
Driver Obstructed	3	5	0	1	1	1	0	1	0	0	0	0	2	7%	2	9%
Car Obstructed	13	15	11	9	7	4	3	0	0	0	0	0	9	31%	11	51%
No DMV Match Found	1	2	3	2	2	1	2	2	2	2	2	2	2	7%	3	14%
LASD Expired	0	0	0	1	0	0	0	0	0	0	1	2	1	5%	0	0%
LASD Return	2	4	1	3	1	1	2	2	1	0	0	0	2	7%	1	6%
Other	0	0	0	0	0	0	0	0	0	0	0	0	0	0%	0	2%
Total:	24	37	31	36	23	18	22	19	11	5	4	6	29	100%	22	100%
Controllable Non-Issued Violations																
Framing of Plate	0	0	0	0	0	0	0	0	0	0	0	0	0	0%	0	10%
Focus / Clarity of Plate	0	1	0	0	0	0	1	0	0	0	0	0	1	25%	0	2%
Dark Interior	0	1	0	0	0	0	0	0	0	0	0	0	1	25%	1	19%
Framing of Driver	1	0	0	0	1	0	1	0	0	0	1	0	1	25%	2	50%
Focus / Clarity of Driver	0	0	0	0	0	0	0	0	0	0	0	0	0	0%	0	2%
Framing of Car	1	0	0	0	0	0	0	0	0	1	0	0	1	25%	0	4%
Data/Operator Error	0	0	0	0	0	0	0	0	0	0	0	0	0	0%	0	0%
Exposure	0	0	0	0	0	0	0	0	0	0	0	0	0	0%	0	2%
Equipment Malfunction	0	0	0	0	0	0	0	0	0	0	0	0	0	0%	0	10%
ACS Expired	0	0	0	0	0	0	0	0	0	0	0	0	0	0%	0	0%
Total:	2	2	0	0	1	0	2	0	0	1	1	0	4	100%	4	100%
Summary Metrics																
Daily Average Vehicle Passes	578	626	700	618	718	565	595	583	564	500	537	574	Year to Date Monthly Average		2011 Monthly Average	
Average Issued Speed	19	17	19	21	20	24	20	22	16	17	19	17	597		563	
Average Issued Red Seconds	22.5	50.6	30.9	66.7	50.8	23.7	40.2	40.7	52.2	99.9	66.8	81.3	52		42.7	
Citation / Violation Issuance Rate	24%	15%	21%	14%	27%	22%	17%	24%	39%	25%	55%	14%	25%		27%	
Controllable Issuance Rate	80%	78%	100%	100%	90%	100%	71%	100%	100%	67%	86%	100%	89%		73%	



Events	2012												Year to Date Monthly Average		2011 Monthly Average		
	Jan-12	Feb-12	Mar-12	Apr-12	May-12	Jun-12	Jul-12	Aug-12	Sep-12	Oct-12	Nov-12	Dec-12	Quantity	%	Quantity	%	
Non-Violations	738	249	246	230	232	213	194	262	300	346	316	274	300	98%	347	97%	
Violations	17	11	2	7	4	1	0	19	0	1	5	3	7	2%	9	3%	
Total:	755	260	248	237	236	214	194	281	300	347	321	277	307	100%	357	100%	
Violations																	
Uncontrollable Non-Issued	14	8	2	5	3	0	0	2	0	1	3	2	4	36%	7	70%	
Controllable Non-Issued	1	1	0	0	0	0	0	17	0	0	0	0	6	51%	1	6%	
Citations	2	2	0	2	1	1	0	0	0	0	2	1	2	13%	2	23%	
Total:	17	11	2	7	4	1	0	19	0	1	5	3	12	100%	9	100%	
Non-Violations																	
Rear Axle Violation	0	0	0	0	0	0	1	0	0	0	0	0	1	0%	0	0%	
Emergency Vehicle	1	0	1	0	0	1	0	0	0	2	0	0	1	0%	1	0%	
Right Turn	0	0	0	0	0	0	0	0	0	0	0	0	0	0%	0	0%	
No Violation Occurred	737	249	245	230	232	212	193	262	300	344	316	274	300	99%	347	100%	
Total:	738	249	246	230	232	213	194	262	300	346	316	274	302	100%	347	100%	
Uncontrollable Non-Issued Violations																	
No Plate	0	1	1	0	0	0	0	2	0	1	1	0	1	12%	0	5%	
Out of State Plate	0	0	0	0	0	0	0	0	0	0	0	0	0	0%	0	0%	
Glare on Plate	0	0	0	0	0	0	0	0	0	0	0	0	0	0%	0	0%	
Illegible Plate	0	1	0	1	0	0	0	0	0	0	1	1	1	10%	0	0%	
Plate Obstructed	0	0	0	0	0	0	0	0	0	0	0	0	0	0%	0	0%	
Windshield Glare	0	0	0	0	0	0	0	0	0	0	0	0	0	0%	0	0%	
Driver Obstructed	0	0	0	1	1	0	0	0	0	0	0	0	1	10%	0	5%	
Car Obstructed	14	6	1	3	2	0	0	0	0	0	0	0	5	50%	5	76%	
No DMV Match Found	0	0	0	0	0	0	0	0	0	0	1	0	1	10%	0	3%	
LASD Expired	0	0	0	0	0	0	0	0	0	0	0	1	1	10%	0	1%	
LASD Return	0	0	0	0	0	0	0	0	0	344	0	0	0	0%	1	8%	
Other	0	0	0	0	0	0	0	0	0	0	0	0	0	0%	0	3%	
Total:	14	8	2	5	3	0	0	2	0	1	3	2	10	100%	7	100%	
Controllable Non-Issued Violations																	
Framing of Plate	0	0	0	0	0	0	0	0	0	0	0	0	0	0%	0	0%	
Focus / Clarity of Plate	0	1	0	0	0	0	0	0	0	0	0	0	1	5%	0	0%	
Dark Interior	0	0	0	0	0	0	0	0	0	0	0	0	0	0%	0	29%	
Framing of Driver	0	0	0	0	0	0	0	0	0	0	0	0	0	0%	0	0%	
Focus / Clarity of Driver	0	0	0	0	0	0	0	0	0	0	0	0	0	0%	0	0%	
Framing of Car	1	0	0	0	0	0	0	0	0	0	0	0	1	5%	0	0%	
Data/Operator Error	0	0	0	0	0	0	0	0	0	0	0	0	0	0%	0	0%	
Exposure	0	0	0	0	0	0	0	1	0	0	0	0	1	5%	0	43%	
Equipment Malfunction	0	0	0	0	0	0	0	16	0	0	0	0	16	84%	0	29%	
ACS Expired	0	0	0	0	0	0	0	0	0	0	0	0	0	0%	0	0%	
Total:	1	1	0	0	0	0	0	17	0	0	0	0	19	100%	1	100%	
Summary Metrics																	
Daily Average Vehicle Passes	88	65	63	48	53	56	40	65	69	86	78	82	Year to Date Monthly Average		2011 Monthly Average		
Average Issued Speed	18	18	0	20	17	15	0	0	0	0	15	16	17		18		
Average Issued Red Seconds	48.2	97.6	0	99.9	99.9	53.2	0	0	0	0	99.9	99.9	86		81		
Citation / Violation Issuance Rate	12%	18%	0%	29%	25%	100%	0%	0%	0%	0%	40%	33%	37%		30%		
Controllable Issuance Rate	67%	67%	0%	100%	100%	100%	0%	0%	0%	0%	100%	100%	90%		85%		



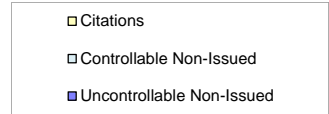
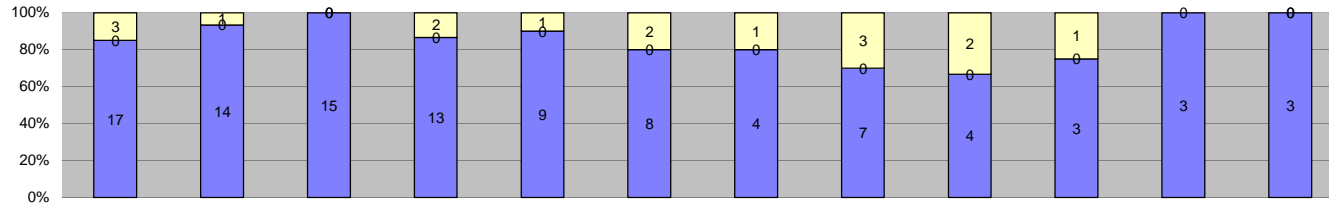
Events	Jan-12	Feb-12	Mar-12	Apr-12	May-12	Jun-12	Jul-12	Aug-12	Sep-12	Oct-12	Nov-12	Dec-12	Year to Date Monthly Average		2011 Monthly Average	
	Quantity	Quantity	Quantity	Quantity	Quantity	Quantity	Quantity	Quantity	Quantity	Quantity	Quantity	Quantity	Quantity	%	Quantity	%
Non-Violations	219	138	160	144	145	153	159	143	165	219	172	137	163	96%	377	97%
Violations	10	5	6	6	7	2	0	30	3	5	1	2	7	4%	11	3%
Total:	229	143	166	150	152	155	159	173	168	224	173	139	170	100%	388	100%
Violations																
Uncontrollable Non-Issued	8	4	5	6	7	1	0	28	2	4	0	1	7	76%	7	68%
Controllable Non-Issued	0	0	0	0	0	0	0	1	0	0	0	0	1	11%	1	5%
Citations	2	1	1	0	0	1	0	1	1	1	1	1	1	13%	3	27%
Total:	10	5	6	6	7	2	0	30	3	5	1	2	9	100%	11	100%
Non-Violations																
Rear Axle Violation	0	0	0	0	0	0	0	0	0	0	0	1	1	1%	0	0%
Emergency Vehicle	1	2	0	1	1	0	0	0	0	1	0	0	1	1%	1	0%
Right Turn	0	0	0	0	0	0	0	0	0	0	0	0	0	0%	0	0%
No Violation Occurred	218	136	160	143	144	153	159	143	165	218	172	136	162	99%	376	100%
Total:	219	138	160	144	145	153	159	143	165	219	172	137	164	100%	377	100%
Uncontrollable Non-Issued Violations																
No Plate	0	1	0	3	0	0	0	0	0	0	0	0	2	11%	1	8%
Out of State Plate	0	0	0	1	1	0	0	0	0	0	0	0	1	5%	0	2%
Glare on Plate	0	0	0	0	0	0	0	0	0	0	0	0	0	0%	0	0%
Illegible Plate	0	3	0	1	1	0	0	0	0	1	0	1	1	8%	0	1%
Plate Obstructed	0	0	0	0	0	0	0	0	0	0	0	0	0	0%	0	0%
Windshield Glare	0	0	0	1	0	0	0	1	0	1	0	0	1	5%	0	3%
Driver Obstructed	0	0	0	0	0	0	0	2	0	0	0	0	2	11%	1	16%
Car Obstructed	5	0	3	0	5	1	0	25	0	0	0	0	8	43%	5	57%
No DMV Match Found	0	0	1	0	0	0	0	0	0	0	0	0	1	5%	0	5%
LASD Expired	0	0	0	0	0	0	0	0	0	0	0	0	0	0%	0	1%
LASD Return	3	0	1	0	0	0	0	0	2	2	0	0	2	11%	0	4%
Other	0	0	0	0	0	0	0	0	0	0	0	0	0	0%	0	2%
Total:	8	4	5	6	7	1	0	28	2	4	0	1	18	100%	8	100%
Controllable Non-Issued Violations																
Framing of Plate	0	0	0	0	0	0	0	0	0	0	0	0	0	0%	0	33%
Focus / Clarity of Plate	0	0	0	0	0	0	0	0	0	0	0	0	0	0%	0	17%
Dark Interior	0	0	0	0	0	0	0	0	0	0	0	0	0	0%	0	17%
Framing of Driver	0	0	0	0	0	0	0	0	0	0	0	0	0	0%	0	17%
Focus / Clarity of Driver	0	0	0	0	0	0	0	0	0	0	0	0	0	0%	0	0%
Framing of Car	0	0	0	0	0	0	0	0	0	0	0	0	0	0%	0	0%
Data/Operator Error	0	0	0	0	0	0	0	0	0	0	0	0	0	0%	0	0%
Exposure	0	0	0	0	0	0	0	1	0	0	0	0	1	100%	0	17%
Equipment Malfunction	0	0	0	0	0	0	0	0	0	0	0	0	0	0%	0	0%
ACS Expired	0	0	0	0	0	0	0	0	0	0	0	0	0	0%	0	0%
Total:	0	0	0	0	0	0	0	1	0	0	0	0	1	100%	1	100%
Summary Metrics																
Daily Average Vehicle Passes	102	100	132	104	100	106	96	111	109	137	128	134	Year to Date Monthly Average		2011 Monthly Average	
Average Issued Speed	19	17	21	0	0	18	0	16	21	17	18	23	113		181	
Average Issued Red Seconds	99.9	99.9	78.8	0	0	99.9	0	99.9	44.3	99.9	99.9	99.9	91		78.2	
Citation / Violation Issuance Rate	20%	20%	17%	0%	0%	50%	0%	3%	33%	20%	100%	50%	35%		30%	
Controllable Issuance Rate	100%	100%	100%	0%	0%	100%	0%	50%	100%	100%	100%	100%	94%		81%	



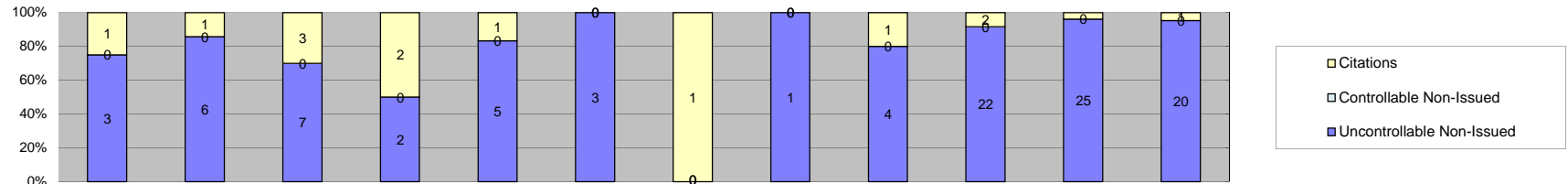
Events	Jan-12	Feb-12	Mar-12	Apr-12	May-12	Jun-12	Jul-12	Aug-12	Sep-12	Oct-12	Nov-12	Dec-12	Year to Date Monthly Average		2011 Monthly Average		
													Quantity	%	Quantity	%	
Non-Violations	1,153	894	788	935	751	742	967	1,127	1,171	1,136	1,265	1,056	999	92%	1,619	95%	
Violations	85	96	79	113	96	60	65	111	99	127	79	68	94	90	8%	80	5%
Total:	1,238	990	867	1,048	847	802	1,032	1,238	1,270	1,263	1,344	1,124	1,089	100%	1,699	100%	
Violations																	
Uncontrollable Non-Issued	37	57	61	72	69	30	38	56	59	74	38	46	53	57%	49	61%	
Controllable Non-Issued	14	18	0	0	2	0	0	0	1	1	9	0	8	8%	4	5%	
Citations	34	21	18	41	25	30	27	55	39	52	32	22	33	35%	27	34%	
Total:	85	96	79	113	96	60	65	111	99	127	79	68	94	100%	80	100%	
Non-Violations																	
Rear Axle Violation	0	0	0	0	0	0	0	1	0	0	0	0	1	0%	0	0%	
Emergency Vehicle	7	12	16	13	7	5	11	20	14	13	16	13	12	1%	12	1%	
Right Turn	0	0	0	0	0	0	0	0	0	0	0	0	0	0%	0	0%	
No Violation Occurred	1,146	882	772	922	744	737	956	1,106	1,157	1,123	1,249	1,043	986	99%	1,607	99%	
Total:	1,153	894	788	935	751	742	967	1,127	1,171	1,136	1,265	1,056	1,000	100%	1,619	100%	
Uncontrollable Non-Issued Violations																	
No Plate	5	1	6	11	12	2	6	5	8	16	8	8	7	12%	6	12%	
Out of State Plate	0	0	0	1	1	1	0	3	1	1	2	0	1	2%	1	1%	
Glare on Plate	1	2	6	0	0	0	2	1	0	1	0	0	2	3%	0	1%	
Illegible Plate	1	17	22	14	19	8	10	22	19	25	7	14	15	24%	1	1%	
Plate Obstructed	0	2	1	1	2	2	1	2	1	4	0	1	2	3%	1	1%	
Windshield Glare	0	7	3	6	4	0	8	6	3	6	4	0	5	8%	5	9%	
Driver Obstructed	1	1	2	2	1	1	1	3	3	4	0	1	2	3%	3	6%	
Car Obstructed	17	16	12	18	12	7	3	6	3	0	0	0	10	17%	26	52%	
No DMV Match Found	2	6	2	8	8	3	2	6	12	11	10	6	6	10%	3	6%	
LASD Expired	0	0	0	4	0	2	0	0	0	0	4	13	6	9%	0	0%	
LASD Return	10	5	7	7	10	4	5	2	9	6	3	3	6	9%	3	6%	
Other	0	0	0	0	0	0	0	0	0	0	0	0	0	0%	2	4%	
Total:	37	57	61	72	69	30	38	56	59	74	38	46	63	100%	49	100%	
Controllable Non-Issued Violations																	
Framing of Plate	3	0	0	0	0	0	0	0	0	0	0	0	3	14%	1	33%	
Focus / Clarity of Plate	0	0	0	0	0	0	0	0	0	0	0	0	0	0%	0	0%	
Dark Interior	3	2	0	0	1	0	0	0	0	0	0	0	2	9%	1	29%	
Framing of Driver	1	0	0	0	0	0	0	0	1	0	0	0	1	5%	1	27%	
Focus / Clarity of Driver	0	1	0	0	0	0	0	0	0	0	0	0	1	5%	0	0%	
Framing of Car	0	0	0	0	0	0	0	0	0	0	0	0	0	0%	0	4%	
Data/Operator Error	0	0	0	0	1	0	0	0	0	0	0	0	1	5%	0	0%	
Exposure	3	4	0	0	0	0	0	0	0	0	9	0	5	24%	0	8%	
Equipment Malfunction	4	11	0	0	0	0	0	0	0	0	0	0	8	34%	0	0%	
ACS Expired	0	0	0	0	0	0	0	0	0	1	0	0	1	5%	0	0%	
Total:	14	18	0	0	2	0	0	0	1	1	9	0	22	100%	4	100%	
Summary Metrics																	
Daily Average Vehicle Passes	1,816	1,954	1,870	1,958	2,300	1,910	1,769	1,998	2,085	2,270	2,167	2,230	Year to Date Monthly Average		2011 Monthly Average		
Average Issued Speed	23	22	22	22	22	21	22	21	21	22	21	21	2,027		1,773		
Average Issued Red Seconds	32.9	17.2	32.1	24.3	13.7	18.8	23.8	25.1	15.7	18.3	30.7	24.5	23		24.1		
Citation / Violation Issuance Rate	40%	22%	23%	36%	26%	50%	42%	50%	39%	41%	41%	32%	37%		31%		
Controllable Issuance Rate	71%	54%	100%	100%	93%	100%	100%	100%	98%	98%	78%	100%	91%		85%		



Los Angeles County MTA Gold Line Approach Summary Report Location 4129: WB to SB 1st @ Mission



Events	Jan-12	Feb-12	Mar-12	Apr-12	May-12	Jun-12	Jul-12	Aug-12	Sep-12	Oct-12	Nov-12	Dec-12	Year to Date Monthly Average		2011 Monthly Average	
													Quantity	%	Quantity	%
Non-Violations	761	481	517	585	492	393	513	567	454	490	403	368	502	98%	497	93%
Violations	20	15	15	15	10	10	5	10	6	4	3	3	10	2%	35	7%
Total:	781	496	532	600	502	403	518	577	460	494	406	371	512	100%	532	100%
Violations																
Uncontrollable Non-Issued	17	14	15	13	9	8	4	7	4	3	3	3	8	82%	20	56%
Controllable Non-Issued	0	0	0	0	0	0	0	0	0	0	0	0	0	0%	2	5%
Citations	3	1	0	2	1	2	1	3	2	1	0	0	2	18%	14	39%
Total:	20	15	15	15	10	10	5	10	6	4	3	3	10	100%	35	100%
Non-Violations																
Rear Axle Violation	0	0	0	0	0	0	0	0	0	0	0	0	0	0%	1	0%
Emergency Vehicle	0	4	1	1	0	0	1	1	1	1	0	0	1	0%	2	0%
Right Turn	0	0	0	0	0	0	0	0	0	0	0	0	0	0%	0	0%
No Violation Occurred	761	477	516	584	492	393	512	566	453	489	403	368	501	100%	494	99%
Total:	761	481	517	585	492	393	513	567	454	490	403	368	503	100%	497	100%
Uncontrollable Non-Issued Violations																
No Plate	1	1	0	0	0	0	1	2	2	0	0	0	1	8%	4	18%
Out of State Plate	0	0	0	0	0	0	0	0	0	0	1	0	1	6%	1	3%
Glare on Plate	0	1	0	0	0	0	0	0	0	0	0	0	1	6%	0	0%
Illegible Plate	0	2	0	1	1	0	0	1	0	0	1	0	1	7%	0	0%
Plate Obstructed	0	0	0	0	0	0	0	0	0	0	0	0	0	0%	0	1%
Windshield Glare	0	0	0	0	0	0	0	0	1	0	0	0	1	6%	1	3%
Driver Obstructed	0	0	1	0	0	1	0	1	0	0	0	0	1	6%	2	8%
Car Obstructed	16	10	12	10	7	5	2	2	0	1	0	0	7	42%	6	32%
No DMV Match Found	0	0	1	2	1	1	0	1	1	1	0	2	1	7%	2	12%
LASD Expired	0	0	0	0	0	0	0	0	0	0	1	1	1	6%	0	0%
LASD Return	0	0	1	0	0	1	1	0	0	1	0	0	1	6%	1	7%
Other	0	0	0	0	0	0	0	0	0	0	0	0	0	0%	3	16%
Total:	17	14	15	13	9	8	4	7	4	3	3	3	17	100%	20	100%
Controllable Non-Issued Violations																
Framing of Plate	0	0	0	0	0	0	0	0	0	0	0	0	0	0	0	24%
Focus / Clarity of Plate	0	0	0	0	0	0	0	0	0	0	0	0	0	0	0	0%
Dark Interior	0	0	0	0	0	0	0	0	0	0	0	0	0	0	0	5%
Framing of Driver	0	0	0	0	0	0	0	0	0	0	0	0	0	0	1	38%
Focus / Clarity of Driver	0	0	0	0	0	0	0	0	0	0	0	0	0	0	0	0%
Framing of Car	0	0	0	0	0	0	0	0	0	0	0	0	0	0	0	5%
Data/Operator Error	0	0	0	0	0	0	0	0	0	0	0	0	0	0	0	5%
Exposure	0	0	0	0	0	0	0	0	0	0	0	0	0	0	0	19%
Equipment Malfunction	0	0	0	0	0	0	0	0	0	0	0	0	0	0	0	0%
ACS Expired	0	0	0	0	0	0	0	0	0	0	0	0	0	0	0	5%
Total:	0	0	0	0	0	0	0	0	0	0	0	0	0	0%	2	100%
Summary Metrics																
Daily Average Vehicle Passes	145	285	136	147	179	139	171	135	136	214	170	200	Year to Date Monthly Average		2011 Monthly Average	
Average Issued Speed	24	14	0	18	17	20	21	16	22	18	0	0	171		416	
Average Issued Red Seconds	66.9	99.9	0	76.6	99.9	50.3	99.9	99.9	99.9	99.9	55.5	0	83		56.6	
Citation / Violation Issuance Rate	15%	7%	0%	13%	10%	20%	20%	30%	33%	25%	0%	0%	19%		37%	
Controllable Issuance Rate	100%	100%	0%	100%	100%	100%	100%	100%	100%	100%	0%	0%	100%		79%	



Events	Jan-12	Feb-12	Mar-12	Apr-12	May-12	Jun-12	Jul-12	Aug-12	Sep-12	Oct-12	Nov-12	Dec-12	Year to Date Monthly Average		2011 Monthly Average	
													Quantity	%	Quantity	%
Non-Violations	44	49	27	68	42	34	42	31	25	43	52	58	43	82%	0	0%
Violations	4	7	10	4	6	3	1	1	5	24	26	21	9	18%	0	0%
Total:	48	56	37	72	48	37	43	32	30	67	78	79	52	100%	0	0%
Violations																
Uncontrollable Non-Issued	3	6	7	2	5	3	0	1	4	22	25	20	9	86%	0	0%
Controllable Non-Issued	0	0	0	0	0	0	0	0	0	0	0	0	0	0%	0	0%
Citations	1	1	3	2	1	0	1	0	1	2	1	1	1	14%	0	0%
Total:	4	7	10	4	6	3	1	1	5	24	26	21	10	100%	0	0%
Non-Violations																
Rear Axle Violation	0	1	3	1	2	0	0	0	0	1	0	2	2	4%	0	0%
Emergency Vehicle	6	9	1	1	8	1	0	0	5	7	0	1	4	10%	0	0%
Right Turn	0	0	0	0	0	0	0	0	0	0	0	0	0	0%	0	0%
No Violation Occurred	38	39	23	66	32	33	42	31	20	35	52	55	39	87%	0	0%
Total:	44	49	27	68	42	34	42	31	25	43	52	58	45	100%	0	0%
Uncontrollable Non-Issued Violations																
No Plate	0	2	1	0	1	0	0	1	0	0	0	0	1	4%	0	0%
Out of State Plate	0	0	0	0	0	0	0	0	0	1	0	0	1	3%	0	0%
Glare on Plate	0	0	0	0	0	0	0	0	0	0	1	0	1	3%	0	0%
Illegible Plate	0	0	0	0	0	0	0	0	0	0	0	0	0	0%	0	0%
Plate Obstructed	1	0	0	0	0	0	0	0	0	1	0	0	1	3%	0	0%
Windshield Glare	0	2	1	0	1	0	0	0	0	2	1	0	1	5%	0	0%
Driver Obstructed	0	0	0	0	0	0	0	0	0	0	0	0	0	0%	0	0%
Car Obstructed	0	0	0	1	1	0	0	0	0	0	0	0	1	3%	0	0%
No DMV Match Found	2	1	3	1	0	1	0	0	2	1	1	0	2	5%	0	0%
LASD Expired	0	0	1	0	0	0	0	0	0	0	0	0	1	3%	0	0%
LASD Return	0	1	1	0	2	2	0	0	2	2	3	0	2	6%	0	0%
Other	0	0	0	0	0	0	0	0	0	15	19	20	18	62%	0	0%
Total:	3	6	7	2	5	3	0	1	4	22	25	20	29	100%	0	0%
Controllable Non-Issued Violations																
Framing of Plate	0	0	0	0	0	0	0	0	0	0	0	0	0	0	0	0%
Focus / Clarity of Plate	0	0	0	0	0	0	0	0	0	0	0	0	0	0	0	0%
Dark Interior	0	0	0	0	0	0	0	0	0	0	0	0	0	0	0	0%
Framing of Driver	0	0	0	0	0	0	0	0	0	0	0	0	0	0	0	0%
Focus / Clarity of Driver	0	0	0	0	0	0	0	0	0	0	0	0	0	0	0	0%
Framing of Car	0	0	0	0	0	0	0	0	0	0	0	0	0	0	0	0%
Data/Operator Error	0	0	0	0	0	0	0	0	0	0	0	0	0	0	0	0%
Exposure	0	0	0	0	0	0	0	0	0	0	0	0	0	0	0	0%
Equipment Malfunction	0	0	0	0	0	0	0	0	0	0	0	0	0	0	0	0%
ACS Expired	0	0	0	0	0	0	0	0	0	0	0	0	0	0	0	0%
Total:	0	0	0	0	0	0	0	0	0	0	0	0	0	0%	0	0%
Summary Metrics																
Daily Average Vehicle Passes	239	244	264	252	261	240	255	238	244	233	240	251	Year to Date Monthly Average		2011 Monthly Average	
Average Issued Speed	17	22	26	17	14	0	22	0	14	24	25	17	247		0	
Average Issued Red Seconds	2.1	0.4	0.7	0.3	90.2	0	464.1	0	108.8	512.1	1.0	6.7	119		0.0	
Citation / Violation Issuance Rate	25%	14%	30%	50%	17%	0%	100%	0%	20%	8%	4%	5%	27%		0%	
Controllable Issuance Rate	100%	100%	100%	100%	100%	0%	100%	0%	100%	100%	100%	100%	100%		0%	

Calls For Information

Reason for Call	Dec-12	3 Month Average	Year to Date Average	Year to Date Total	2011 Average
<i>Appointment</i>	3	3	3	30	6
<i>Bail</i>	5	5	6	71	7
<i>Complaint</i>	0	0	0	0	0
<i>Contest Violation</i>	4	10	8	99	12
<i>Courtesy Notice</i>	2	2	2	23	0
<i>Explain Citation</i>	3	2	2	23	4
<i>Explain Court</i>	0	0	0	0	0
<i>Explain the Project</i>	0	0	0	0	0
<i>Extension</i>	2	0	2	11	2
<i>Other</i>	0	0	0	0	0
<i>Affidavit of Non-Liability</i>	3	9	7	83	10
<i>Affidavit of Non-Liability Status</i>	1	1	1	8	1
<i>Traffic School</i>	1	1	1	13	1
Total Calls	24	32	32	361	43
Appointments Scheduled	5	2	3	28	6
Affidavits of Non-Liability Processed	37	54	44	532	56
Court Packets Prepared	35	39	36	426	39



A **xerox** Company

Los Angeles County MTA Gold Line Monthly Citation Yield - By Location *December 2012*

Direction	Location	Code	Days of Enforcement	Events	Violations	Citations	Yield*
EB to NB	3rd & Civic Center	4007	31	611	10	6	0.19
WB to SB	3rd & La Verne	4009	31	245	24	11	0.35
EB to NB	3rd & Mednik	4017	31	245	6	1	0.03
WB to SB	3rd & Mednik	4019	31	216	4	0	0.00
EB to NB	3rd & Arizona	4027	31	445	8	2	0.06
WB to SB	3rd & Arizona	4029	31	173	6	1	0.03
EB to NB	3rd and McDonnell	4037	31	273	59	3	0.10
WB to SB	3rd and McDonnell	4039	31	229	4	1	0.03
EB to NB	3rd & Ford	4047	31	328	13	3	0.10
WB to SB	3rd & Ford	4049	31	214	11	4	0.13
EB to NB	3rd & Eastern	4057	31	133	41	14	0.45
WB to SB	3rd & Eastern	4059	31	118	8	0	0.00
WB to SB	3rd & Downey	4069	31	429	91	16	0.52
EB to NB	3rd & Gage	4077	31	128	14	4	0.13
WB to SB	3rd & Gage	4079	31	340	59	15	0.48
EB to NB	3rd & Rowan	4083	31	651	28	7	0.23
WB to SB	3rd & Rowan	4085	31	47	18	5	0.16
EB to NB	1st & Lorena	4087	31	152	15	7	0.23
WB to SB	1st & Lorena	4089	31	98	11	5	0.16
EB to NB	1st & Clarence	4097	31	477	1	0	0.00
WB to SB	1st & Clarence	4099	31	850	7	1	0.03
WB to SB	1st & Utah	4109	31	277	3	1	0.03
WB to SB	1st & Anderson	4119	31	139	2	1	0.03
EB to NB	1st & Mission	4127	31	1,124	68	22	0.71
WB to SB	1st & Mission	4129	31	371	3	0	0.00
SB to EB	Alameda @ Temple	4137	31	79	21	1	0.03
Totals			31	8,392	535	131	4.23

*Yield is the number of citations issued per day of enforcement.



A **xerox** Company

**Los Angeles County MTA Gold Line
Disposition Summary Report
December 2012**

Disposition Type	Dec-12		3 Month Average		YTD Total		YTD Average		2011 Average	
	Count	Amount Paid	Count	Amount Paid	Count	Amount Paid	Count	Amount Paid	Count	Amount Paid
<i>Bail Forfeiture</i>	48	\$23,561.00	42	\$21,062	479	\$237,480	40	\$19,790	58	\$28,141
<i>Fine Paid</i>	27	\$12,015.00	25	\$10,721	298	\$98,987	25	\$8,249	19	\$8,385
<i>Department Void</i>	0	\$0.00	0	\$0	7	\$0	1	\$0	6	\$0
<i>Not Guilty</i>	101	\$0.00	96	\$0	576	\$0	48	\$0	38	\$0
<i>Section D Void</i>	37	\$0.00	52	\$0	542	\$0	45	\$0	57	\$0
<i>Traffic School</i>	48	\$22,053.00	43	\$19,740	484	\$225,169	40	\$18,764	62	\$30,124
Court Gross Total	261	\$57,629.00	258	\$51,523	2,386	\$561,636	199	\$46,803	239	\$66,650
MTA Gross Total*	123	\$17,854.65	111	\$16,050	1,261	\$183,008	105	\$15,251	138	\$21,131

*Logic built on following model (assuming the new 2009 fine and fee structure):

MTA receives \$146.31 of \$446.00 citation where bail forfeiture and fine paid occurs

MTA receives \$148.05 of \$509.00 citation when traffic school option is paid for

	<u>Total</u> <u>Events</u>	<u>Non</u> <u>Violations</u>	<u>Potential</u> <u>Violations</u>	<u>Percent</u> <u>Citable</u>	<u>Non Issued</u> <u>Violations</u>	<u>No DMV</u> <u>Match</u>	<u>Police/</u> <u>Client</u> <u>Rejected</u>	<u>Citations</u> <u>Issued</u>	<u>DMV</u> <u>Match</u> <u>Rate</u>	<u>Issuance</u> <u>Rate</u>	<u>Dispo</u> <u>Paid</u>	<u>Pay</u> <u>Rate</u>	<u>Closed</u> <u>No Pay</u>	<u>Pending</u>	<u>Closure</u> <u>Rate</u>	<u>Court</u> <u>Packs</u>	<u>Contest</u> <u>Rate</u>
Dec-09	5,805	5,387	418	7.2%	258	29	14	160	85.7%	38.3%	90	56.3%	34	36	77.5%	0	-
Jan-10	12,371	11,195	1,176	9.5%	843	65	40	333	85.2%	28.3%	158	47.4%	124	51	84.7%	0	-
Feb-10	11,564	10,651	913	7.9%	604	58	19	309	85.0%	33.8%	147	47.6%	119	43	86.1%	0	-
Mar-10	13,350	12,264	1,086	8.1%	739	79	26	347	82.5%	32.0%	157	45.2%	130	60	82.7%	0	-
Apr-10	14,976	13,798	1,178	7.9%	809	68	46	369	85.9%	31.3%	153	41.5%	162	54	85.4%	4	-
May-10	13,007	11,845	1,162	8.9%	855	70	38	307	83.1%	26.4%	139	45.3%	123	45	85.3%	3	-
Jun-10	13,058	11,782	1,276	9.8%	895	66	72	381	87.3%	29.9%	167	43.8%	163	51	86.6%	4	4.4%
Jul-10	13,229	11,896	1,333	10.1%	1000	62	78	333	86.9%	25.0%	137	41.1%	143	53	84.1%	26	16.5%
Aug-10	13,811	12,469	1,342	9.7%	1053	83	70	289	81.2%	21.5%	116	40.1%	124	49	83.0%	0	0.0%
Sep-10	14,099	12,605	1,494	10.6%	1090	69	40	404	86.5%	27.0%	214	53.0%	116	74	81.7%	2	1.3%
Oct-10	12,325	11,102	1,223	9.9%	882	75	27	341	83.1%	27.9%	167	49.0%	98	76	77.7%	3	2.0%
Nov-10	12,575	11,261	1,314	10.4%	922	72	49	392	86.0%	29.8%	203	51.8%	105	84	78.6%	16	11.5%
Dec-10	14,143	12,889	1,254	8.9%	933	61	20	321	84.8%	25.6%	157	48.9%	105	59	81.6%	84	50.3%
Jan-11	12,708	11,805	903	7.1%	565	78	16	338	81.9%	37.4%	139	41.1%	148	51	84.9%	38	27.7%
Feb-11	12,856	11,969	887	6.9%	559	72	16	328	82.7%	37.0%	129	39.3%	143	56	82.9%	27	23.3%
Mar-11	14,005	12,975	1,030	7.4%	709	64	21	321	84.2%	31.2%	152	47.4%	104	65	79.8%	23	10.7%
Apr-11	13,373	12,307	1,066	8.0%	719	82	102	347	84.6%	32.6%	159	45.8%	104	84	75.8%	39	23.4%
May-11	13,666	12,487	1,179	8.6%	814	104	112	365	82.1%	31.0%	147	40.3%	116	102	72.1%	35	17.2%
Jun-11	12,946	11,982	964	7.4%	672	82	104	292	82.8%	30.3%	109	37.3%	70	113	61.3%	43	27.4%
Jul-11	11,546	10,599	947	8.2%	667	71	135	280	85.4%	29.6%	99	35.4%	73	108	61.4%	62	44.6%
Aug-11	9,015	8,185	830	9.2%	554	33	127	276	92.4%	33.3%	107	38.8%	79	90	67.4%	55	42.6%
Sep-11	9,303	8,386	917	9.9%	686	104	125	231	77.4%	25.2%	110	47.6%	36	85	63.2%	43	28.3%
Oct-11	10,383	9,500	883	8.5%	669	61	120	214	84.6%	24.2%	94	43.9%	36	84	60.7%	36	22.6%
Nov-11	9,455	8,859	596	6.3%	410	63	92	186	81.5%	31.2%	55	29.6%	34	97	47.8%	43	29.3%
Dec-11	12,822	11,973	849	6.6%	605	64	141	244	85.7%	28.7%	72	29.5%	42	130	46.7%	27	24.8%
Jan-12	10,553	9,795	758	7.2%	592	60	111	166	82.2%	21.9%	53	31.9%	45	68	59.0%	35	35.4%
Feb-12	8,612	7,696	916	10.6%	696	73	124	220	82.5%	24.0%	62	28.2%	50	108	50.9%	28	26.2%
Mar-12	9,115	8,201	914	10.0%	743	82	125	171	78.3%	18.7%	40	23.4%	32	99	42.1%	20	18.2%
Apr-12	9,037	8,236	801	8.9%	617	69	92	184	80.0%	23.0%	42	22.8%	40	102	44.6%	46	48.9%
May-12	9,202	8,355	847	9.2%	676	71	128	171	80.8%	20.2%	34	19.9%	33	104	39.2%	49	89.1%
Jun-12	8,007	7,372	635	7.9%	422	63	111	213	83.7%	33.5%	21	9.9%	27	165	22.5%	24	43.6%
Jul-12	9,645	8,903	742	7.7%	508	60	83	234	84.1%	31.5%	16	6.8%	19	199	15.0%	31	56.4%
Aug-12	10,021	9,172	849	8.5%	570	78	84	279	82.3%	32.9%	12	4.3%	26	241	13.6%	37	67.3%
Sep-12	9,192	8,486	706	7.7%	474	100	97	232	76.7%	32.9%	9	3.9%	18	205	11.6%	30	54.5%
Oct-12	9,961	9,186	775	7.8%	481	101	66	294	78.1%	37.9%	5	1.7%	4	285	3.1%	51	92.7%
Nov-12	8,916	8,280	636	7.1%	455	88	40	181	71.5%	28.5%	2	1.1%	1	178	1.7%	37	67.3%
Dec-12	8,392	7,857	535	6.4%	404	74	46	131	70.5%	24.5%	0	0.0%	0	131	0.0%	35	48.6%
Total	457,800	381,710	35,334	16.6%	25,150	2,654	2,757	10,184	83.0%	28.8%	3,673	40.2%	2,826	3,685	70.8%	1036	34.07%

* Pay Rate and Closure Rate percentages are based on a 4 month lag

** Contested Citations take into account a 6 month lag from the violation date to the trail date.