



Gold Line Monthly Report



December 2013



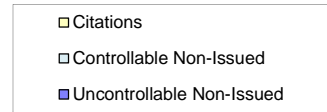
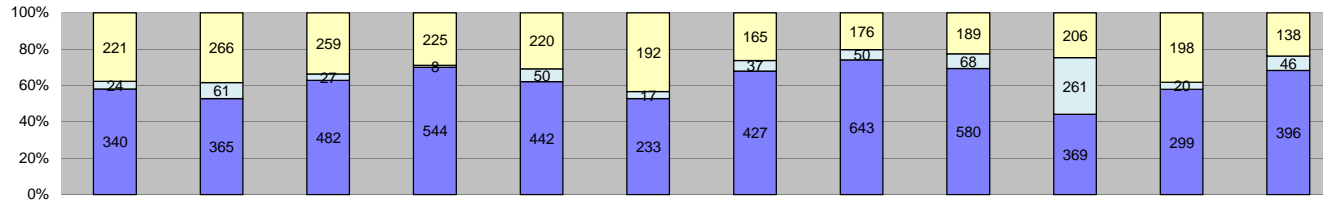


Table of Contents

Report Title	Page
<i>Approach Summary Report, All Locations.....</i>	3
<i>Approach Summary Report, Location 4007: EB to NB 3rd @ Civic Center.....</i>	4
<i>Approach Summary Report, Location 4009: WB to SB 3rd @ La Verne.....</i>	5
<i>Approach Summary Report, Location 4017: EB to NB 3rd @ Mednik.....</i>	6
<i>Approach Summary Report, Location 4019: WB to SB 3rd @ Mednik.....</i>	7
<i>Approach Summary Report, Location 4027: EB to NB 3rd @ Arizona.....</i>	8
<i>Approach Summary Report, Location 4029: WB to SB 3rd @ Arizona.....</i>	9
<i>Approach Summary Report, Location 4037: EB to NB 3rd @ McDonnell.....</i>	10
<i>Approach Summary Report, Location 4039: WB to SB 3rd @ McDonnell.....</i>	11
<i>Approach Summary Report, Location 4047: EB to NB 3rd @ Ford.....</i>	12
<i>Approach Summary Report, Location 4049: WB to SB 3rd @ Ford.....</i>	13
<i>Approach Summary Report, Location 4057: EB to NB 3rd @ Eastern.....</i>	14
<i>Approach Summary Report, Location 4059: WB to SB 3rd @ Eastern.....</i>	15
<i>Approach Summary Report, Location 4069: WB to SB 3rd @ Downey.....</i>	16
<i>Approach Summary Report, Location 4077: EB to NB 3rd @ Gage.....</i>	17
<i>Approach Summary Report, Location 4079: WB to SB 3rd @ Gage.....</i>	18
<i>Approach Summary Report, Location 4083: EB to NB 1st @ Rowan.....</i>	19
<i>Approach Summary Report, Location 4085: WB to SB 1st @ Rowan.....</i>	20
<i>Approach Summary Report, Location 4087: EB to NB 1st @ Lorena.....</i>	21
<i>Approach Summary Report, Location 4089: WB to SB 1st @ Lorena.....</i>	22
<i>Approach Summary Report, Location 4097: EB to NB 1st @ Clarence.....</i>	23
<i>Approach Summary Report, Location 4099: WB to SB 1st @ Clarence.....</i>	24
<i>Approach Summary Report, Location 4109: WB to SB 1st @ Utah.....</i>	25
<i>Approach Summary Report, Location 4119: WB to SB 1st @ Anderson.....</i>	26
<i>Approach Summary Report, Location 4127: EB to NB 1st @ Mission.....</i>	27
<i>Approach Summary Report, Location 4129: WB to SB 1st @ Mission.....</i>	27
<i>Approach Summary Report, Location 4137: SB to EB Alameda St. @ Temple St.....</i>	28
<i>Customer Service Report.....</i>	29
<i>Monthly Citation Yield Report.....</i>	30
<i>Disposition Summary Report.....</i>	31
<i>Performance Report.....</i>	32



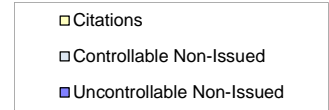
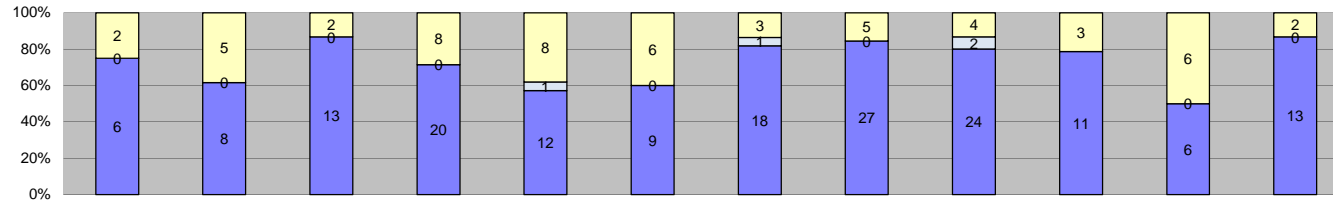
Los Angeles County MTA Gold Line Approach Summary Report All Locations



Events	Jan-13	Feb-13	Mar-13	Apr-13	May-13	Jun-13	Jul-13	Aug-13	Sep-13	Oct-13	Nov-13	Dec-13	Year to Date Monthly Average		2012 Monthly Average	
													Quantity	%	Quantity	%
Non-Violations	7,631	7,562	8,677	8,692	9,333	5,781	8,179	8,989	8,760	9,183	7,815	8,503	8,259	92%	8,462	92%
Violations	585	692	768	777	712	442	629	869	837	836	517	580	687	8%	760	8%
Total:	8,216	8,254	9,445	9,469	10,045	6,223	8,808	9,858	9,597	10,019	8,332	9,083	8,946	100%	9,221	100%
Violations																
Uncontrollable Non-Issued	340	365	482	544	442	233	427	643	580	369	299	396	427	62%	506	67%
Controllable Non-Issued	24	61	27	8	50	17	37	50	68	261	20	46	56	8%	47	6%
Citations	221	266	259	225	220	192	165	176	189	206	198	138	205	30%	206	27%
Total:	585	692	768	777	712	442	629	869	837	836	517	580	687	100%	760	100%
Non-Violations																
Rear Axle Violation	6	8	2	1	4	1	3	1	1	8	3	1	3	0%	5	0%
Emergency Vehicle	252	219	242	123	192	215	287	238	299	333	263	249	243	3%	241	3%
Right Turn	1	0	0	0	0	0	0	0	0	0	0	0	1	0%	0	0%
No Violation Occurred	7,372	7,335	8,433	8,568	9,137	5,565	7,889	8,750	8,460	8,842	7,549	8,253	8,013	97%	8,216	97%
Total:	7,631	7,562	8,677	8,692	9,333	5,781	8,179	8,989	8,760	9,183	7,815	8,503	8,260	100%	8,462	100%
Uncontrollable Non-Issued Violations																
No Plate	67	39	69	78	80	39	67	91	62	54	43	62	63	14%	64	12%
Out of State Plate	6	8	9	7	6	6	7	13	11	6	5	11	8	2%	6	1%
Glare on Plate	0	2	4	0	1	3	5	7	17	1	1	0	5	1%	14	3%
Illegible Plate	58	67	112	113	72	33	102	148	80	40	42	54	77	18%	104	19%
Plate Obstructed	2	8	8	7	6	2	4	2	4	4	4	0	5	1%	7	1%
Windshield Glare	19	19	32	33	55	34	32	62	45	24	30	25	34	8%	31	6%
Driver Obstructed	20	32	39	71	51	6	25	52	52	28	17	44	36	8%	21	4%
Car Obstructed	9	16	11	6	5	2	11	18	3	3	3	3	8	2%	82	15%
No DMV Match Found	73	79	98	92	80	51	76	101	113	92	77	76	84	19%	77	14%
LASD Expired	0	0	2	15	0	1	3	5	1	1	0	21	6	1%	29	5%
LASD Return	61	70	71	91	86	56	95	116	173	88	68	100	90	20%	92	17%
Other	25	25	27	31	0	0	0	28	19	28	9	0	24	5%	18	3%
Total:	340	365	482	544	442	233	427	643	580	369	299	396	438	100%	544	100%
Controllable Non-Issued Violations																
Framing of Plate	0	1	0	0	0	0	0	2	1	2	3	1	2	2%	4	6%
Focus / Clarity of Plate	0	1	3	0	3	0	3	1	0	12	0	0	4	5%	3	4%
Dark Interior	3	1	3	4	7	1	1	2	3	7	6	20	5	6%	5	7%
Framing of Driver	0	3	1	0	0	2	0	1	3	6	2	0	3	3%	2	3%
Focus / Clarity of Driver	0	0	0	0	1	0	0	1	0	0	2	0	1	2%	1	1%
Framing of Car	0	1	1	0	0	0	0	0	0	1	1	1	1	1%	2	2%
Data/Operator Error	5	10	10	0	0	9	4	9	12	3	0	0	8	10%	7	10%
Exposure	0	4	9	1	2	4	2	24	15	10	6	24	9	12%	6	8%
Equipment Malfunction	16	40	0	3	37	1	27	10	34	220	0	0	43	57%	41	57%
ACS Expired	0	0	0	0	0	0	0	0	0	0	0	0	0	0%	1	1%
Total:	24	61	27	8	50	17	37	50	68	261	20	46	75	100%	72	100%
Summary Metrics																
Daily Average Vehicle Passes	18,603	17,167	20,711	17,863	19,938	21,298	21,045	21,210	21,710	21,256	22,061	20,160	Year to Date Monthly Average		2012 Monthly Average	
Average Issued Speed	20	21	21	21	21	21	21	20	20	20	20	20	20,252		18,985	
Average Issued Red Seconds	31.5	33.0	34.6	34.6	37.9	78.6	46.6	58.9	34.4	40.1	66.8	33.9	44.2		42.1	
Citation / Violation Issuance Rate	38%	38%	34%	29%	31%	43%	26%	20%	23%	25%	38%	24%	31%		27%	
Controllable Issuance Rate	90%	81%	91%	97%	81%	92%	82%	78%	74%	44%	91%	75%	81%		82%	



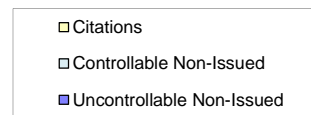
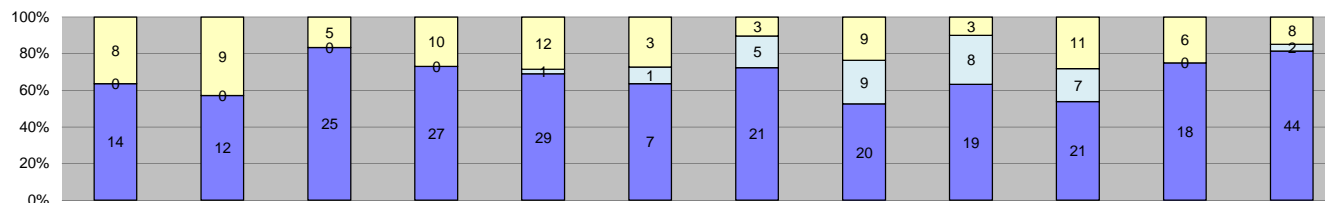
Los Angeles County MTA Gold Line
 Approach Summary Report
 Location 4007: EB to NB 3rd @ Civic Center



Events	Jan-13	Feb-13	Mar-13	Apr-13	May-13	Jun-13	Jul-13	Aug-13	Sep-13	Oct-13	Nov-13	Dec-13	Year to Date Monthly Average		2012 Monthly Average	
	Quantity	Quantity	Quantity	Quantity	Quantity	Quantity	Quantity	Quantity	Quantity	Quantity	Quantity	Quantity	Quantity	%	Quantity	%
Non-Violations	542	494	550	587	619	527	788	825	877	693	648	763	659	97%	660	97%
Violations	8	13	15	28	21	15	22	32	30	14	12	15	19	3%	20	3%
Total:	550	507	565	615	640	542	810	857	907	707	660	778	678	100%	680	100%
Violations																
Uncontrollable Non-Issued	6	8	13	20	12	9	18	27	24	11	6	13	14	70%	14	67%
Controllable Non-Issued	0	0	0	0	1	0	1	0	2	0	0	0	1	7%	2	8%
Citations	2	5	2	8	8	6	3	5	4	3	6	2	5	23%	6	25%
Total:	8	13	15	28	21	15	22	32	30	14	12	15	20	100%	22	100%
Non-Violations																
Rear Axle Violation	0	0	0	0	0	0	0	0	0	0	0	0	0	0%	2	0%
Emergency Vehicle	7	3	4	3	2	2	11	13	8	8	7	2	6	1%	4	1%
Right Turn	0	0	0	0	0	0	0	0	0	0	0	0	0	0%	0	0%
No Violation Occurred	535	491	546	584	617	525	777	812	869	685	641	761	654	99%	656	99%
Total:	542	494	550	587	619	527	788	825	877	693	648	763	659	100%	661	100%
Uncontrollable Non-Issued Violations																
No Plate	1	0	1	2	1	1	2	2	5	3	1	1	2	8%	2	8%
Out of State Plate	0	0	0	0	0	0	1	0	0	0	0	0	1	5%	1	5%
Glare on Plate	0	0	0	0	0	0	1	0	2	0	0	0	2	7%	1	5%
Illegible Plate	0	3	3	8	0	2	9	14	4	2	1	6	5	23%	3	15%
Plate Obstructed	0	0	0	0	0	0	1	0	0	0	0	0	1	5%	0	0%
Windshield Glare	0	0	3	1	2	2	1	2	0	0	1	0	2	8%	2	8%
Driver Obstructed	2	1	1	3	4	0	0	2	4	2	0	1	2	10%	1	7%
Car Obstructed	0	1	2	1	0	0	0	1	0	1	0	1	1	5%	8	36%
No DMV Match Found	1	2	1	0	2	1	0	3	3	1	2	0	2	8%	2	7%
LASD Expired	0	0	0	2	0	0	0	0	0	0	0	0	2	9%	0	0%
LASD Return	2	1	2	3	3	3	3	3	6	2	1	4	3	12%	2	9%
Other	0	0	0	0	0	0	0	0	0	0	0	0	0	0%	0	0%
Total:	6	8	13	20	12	9	18	27	24	11	6	13	22	100%	22	100%
Controllable Non-Issued Violations																
Framing of Plate	0	0	0	0	0	0	0	0	0	0	0	0	0	0%	1	25%
Focus / Clarity of Plate	0	0	0	0	0	0	0	0	0	0	0	0	0	0%	1	25%
Dark Interior	0	0	0	0	1	0	0	0	0	0	0	0	1	40%	0	0%
Framing of Driver	0	0	0	0	0	0	0	0	0	0	0	0	0	0%	0	0%
Focus / Clarity of Driver	0	0	0	0	0	0	0	0	0	0	0	0	0	0%	0	0%
Framing of Car	0	0	0	0	0	0	0	0	0	0	0	0	0	0%	1	25%
Data/Operator Error	0	0	0	0	0	0	0	0	0	0	0	0	0	0%	0	0%
Exposure	0	0	0	0	0	0	1	0	2	0	0	0	2	60%	1	25%
Equipment Malfunction	0	0	0	0	0	0	0	0	0	0	0	0	0	0%	0	0%
ACS Expired	0	0	0	0	0	0	0	0	0	0	0	0	0	0%	0	0%
Total:	0	0	0	0	1	0	1	0	2	0	0	0	3	100%	4	100%
Summary Metrics																
Daily Average Vehicle Passes	436	471	483	501	551	600	632	595	551	664	672	567	Year to Date Monthly Average		2012 Monthly Average	
Average Issued Speed	18	19	20	19	18	19	17	17	19	17	20	20	560		344	
Average Issued Red Seconds	35.4	36.2	99.9	58.8	78.3	74.4	81.3	76.7	48.1	66.9	50.2	50.6	63		46.8	
Citation / Violation Issuance Rate	25%	38%	13%	29%	38%	40%	14%	16%	13%	21%	50%	13%	26%		30%	
Controllable Issuance Rate	100%	100%	100%	100%	89%	100%	75%	100%	67%	100%	100%	100%	94%		93%	



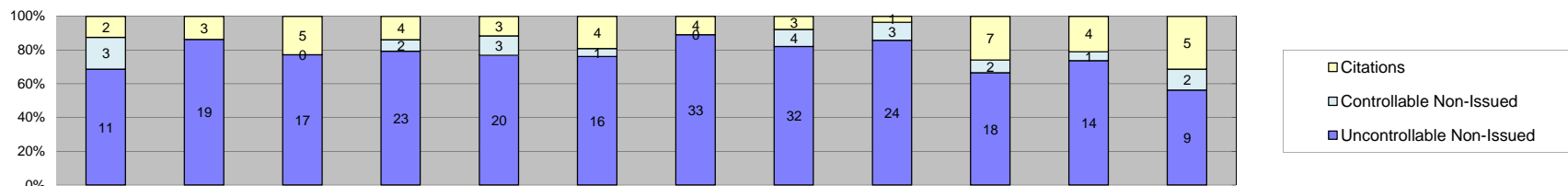
Los Angeles County MTA Gold Line
 Approach Summary Report
 Location 4009: WB to SB 3rd @ La Verne



Events	Jan-13	Feb-13	Mar-13	Apr-13	May-13	Jun-13	Jul-13	Aug-13	Sep-13	Oct-13	Nov-13	Dec-13	Year to Date Monthly Average		2012 Monthly Average	
	Quantity	Quantity	Quantity	Quantity	Quantity	Quantity	Quantity	Quantity	Quantity	Quantity	Quantity	Quantity	Quantity	%	%	%
Non-Violations	216	323	233	172	245	150	263	219	220	239	229	217	227	88%	221	90%
Violations	22	21	30	37	42	11	29	38	30	39	24	54	31	12%	25	10%
Total:	238	344	263	209	287	161	292	257	250	278	253	271	259	100%	246	100%
Violations																
Uncontrollable Non-Issued	14	12	25	27	29	7	21	20	19	21	18	44	21	64%	14	52%
Controllable Non-Issued	0	0	0	0	1	1	5	9	8	7	0	2	5	14%	5	17%
Citations	8	9	5	10	12	3	3	9	3	11	6	8	7	22%	9	32%
Total:	22	21	30	37	42	11	29	38	30	39	24	54	33	100%	27	100%
Non-Violations																
Rear Axle Violation	0	0	0	0	0	0	0	0	0	1	1	0	1	0%	1	0%
Emergency Vehicle	32	47	73	34	67	54	64	47	76	95	77	72	62	27%	51	23%
Right Turn	0	0	0	0	0	0	0	0	0	0	0	0	0	0%	0	0%
No Violation Occurred	184	276	160	138	178	96	199	172	144	143	151	145	166	73%	170	77%
Total:	216	323	233	172	245	150	263	219	220	239	229	217	228	100%	222	100%
Uncontrollable Non-Issued Violations																
No Plate	3	1	5	5	11	3	7	4	3	7	2	10	5	19%	4	17%
Out of State Plate	1	0	0	0	0	0	0	0	0	0	1	0	1	4%	1	5%
Glare on Plate	0	0	0	0	0	0	0	0	0	0	0	0	0	0%	1	5%
Illegible Plate	0	2	3	6	3	0	4	3	1	4	2	13	4	15%	2	11%
Plate Obstructed	0	0	0	0	0	0	0	0	0	0	0	0	0	0%	0	0%
Windshield Glare	0	1	0	1	1	2	1	0	1	0	0	0	1	4%	2	7%
Driver Obstructed	3	2	3	8	8	0	2	4	5	0	1	3	4	15%	1	6%
Car Obstructed	0	0	1	0	0	0	0	1	0	0	0	0	1	4%	3	11%
No DMV Match Found	6	5	10	3	5	0	7	4	7	8	5	10	6	24%	4	17%
LASD Expired	0	0	0	2	0	1	0	2	1	0	0	2	2	6%	2	9%
LASD Return	1	1	3	2	1	1	0	2	1	2	7	6	2	9%	3	12%
Other	0	0	0	0	0	0	0	0	0	0	0	0	0	0%	0	0%
Total:	14	12	25	27	29	7	21	20	19	21	18	44	27	100%	22	100%
Controllable Non-Issued Violations																
Framing of Plate	0	0	0	0	0	0	0	0	0	0	0	0	0	0%	0	0%
Focus / Clarity of Plate	0	0	0	0	0	0	0	0	0	3	0	0	3	19%	1	5%
Dark Interior	0	0	0	0	0	0	1	0	0	0	0	1	1	6%	1	7%
Framing of Driver	0	0	0	0	0	0	0	0	0	4	0	0	4	25%	2	11%
Focus / Clarity of Driver	0	0	0	0	0	0	0	0	0	0	0	0	0	0%	0	0%
Framing of Car	0	0	0	0	0	0	0	0	0	0	0	0	0	0%	0	0%
Data/Operator Error	0	0	0	0	0	0	4	7	4	0	0	0	5	32%	4	20%
Exposure	0	0	0	0	0	0	0	1	0	0	0	1	1	6%	2	8%
Equipment Malfunction	0	0	0	0	1	1	0	1	4	0	0	0	2	11%	9	49%
ACS Expired	0	0	0	0	0	0	0	0	0	0	0	0	0	0%	0	0%
Total:	0	0	0	0	1	1	5	9	8	7	0	2	16	100%	19	100%
Summary Metrics																
Daily Average Vehicle Passes	852	1,015	919	1,084	1,119	1,181	1,230	1,051	1,152	1,008	1,217	1,138	Year to Date Monthly Average		2012 Monthly Average	
Average Issued Speed	21	22	21	21	19	18	23	19	21	21	20	20	1,080		824	
Average Issued Red Seconds	31.7	0.4	20.3	5.4	26.4	0.7	0.5	22.6	66.9	12.2	0.4	33.3	18		15.4	
Citation / Violation Issuance Rate	36%	43%	17%	27%	29%	27%	10%	24%	10%	28%	25%	15%	24%		35%	
Controllable Issuance Rate	100%	100%	100%	100%	92%	75%	38%	50%	27%	61%	100%	80%	77%		83%	



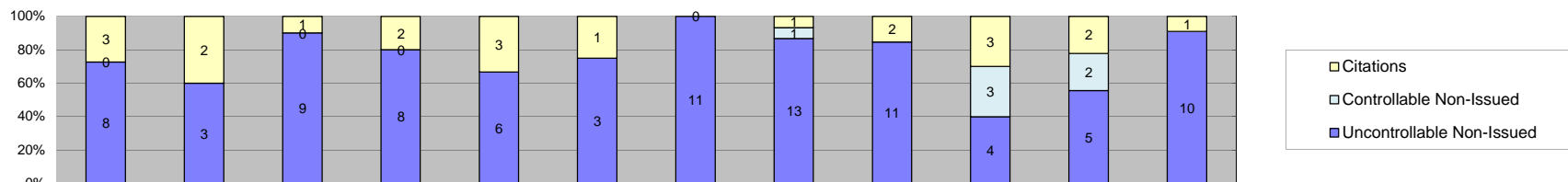
Los Angeles County MTA Gold Line
 Approach Summary Report
 Location 4017: EB to NB 3rd @ Mednik



Events	Jan-13	Feb-13	Mar-13	Apr-13	May-13	Jun-13	Jul-13	Aug-13	Sep-13	Oct-13	Nov-13	Dec-13	Year to Date Monthly Average		2012 Monthly Average	
													Quantity	%	Quantity	%
Non-Violations	204	217	229	294	250	159	295	334	284	295	237	248	254	91%	258	89%
Violations	16	22	22	29	26	21	37	39	28	27	19	16	25	9%	31	11%
Total:	220	239	251	323	276	180	332	373	312	322	256	264	279	100%	289	100%
Violations																
Uncontrollable Non-Issued	11	19	17	23	20	16	33	32	24	18	14	9	20	76%	22	65%
Controllable Non-Issued	3	0	0	2	3	1	0	4	3	2	1	2	2	9%	5	15%
Citations	2	3	5	4	3	4	4	3	1	7	4	5	4	15%	7	20%
Total:	16	22	22	29	26	21	37	39	28	27	19	16	26	100%	34	100%
Non-Violations																
Rear Axle Violation	0	0	0	0	0	0	0	0	0	0	0	0	0	0%	1	0%
Emergency Vehicle	14	18	12	3	10	12	21	17	26	12	20	17	15	6%	16	6%
Right Turn	0	0	0	0	0	0	0	0	0	0	0	0	0	0%	0	0%
No Violation Occurred	190	199	217	291	240	147	274	317	258	283	217	231	239	94%	243	94%
Total:	204	217	229	294	250	159	295	334	284	295	237	248	254	100%	259	100%
Uncontrollable Non-Issued Violations																
No Plate	1	5	5	7	3	5	4	3	3	2	2	2	4	14%	4	14%
Out of State Plate	0	1	0	0	0	0	0	0	0	0	0	2	2	6%	1	3%
Glare on Plate	0	0	0	0	0	0	0	0	0	0	0	0	0	0%	2	5%
Illegible Plate	2	0	5	4	5	1	9	11	1	0	1	1	4	16%	5	15%
Plate Obstructed	0	0	0	0	0	0	0	0	0	0	0	0	0	0%	1	3%
Windshield Glare	6	4	1	3	5	3	2	6	4	4	2	0	4	15%	4	13%
Driver Obstructed	0	1	0	1	1	0	2	4	4	3	4	2	2	10%	2	6%
Car Obstructed	0	1	0	1	0	2	1	0	0	0	0	0	1	5%	4	13%
No DMV Match Found	1	2	1	1	3	3	3	0	2	1	4	1	2	8%	3	10%
LASD Expired	0	0	0	1	0	0	0	0	0	0	0	0	1	4%	2	6%
LASD Return	1	5	5	5	3	2	12	7	10	8	1	1	5	21%	3	11%
Other	0	0	0	0	0	0	0	0	0	0	0	0	0	0%	0	0%
Total:	11	19	17	23	20	16	33	32	24	18	14	9	24	100%	31	100%
Controllable Non-Issued Violations																
Framing of Plate	0	0	0	0	0	0	0	0	0	0	0	0	0	0%	0	0%
Focus / Clarity of Plate	0	0	0	0	0	0	0	0	0	0	0	0	0	0%	0	0%
Dark Interior	3	0	0	2	3	1	0	0	0	0	1	2	2	35%	1	20%
Framing of Driver	0	0	0	0	0	0	0	0	0	0	0	0	0	0%	0	0%
Focus / Clarity of Driver	0	0	0	0	0	0	0	0	0	0	0	0	0	0%	0	0%
Framing of Car	0	0	0	0	0	0	0	0	0	0	0	0	0	0%	0	0%
Data/Operator Error	0	0	0	0	0	0	0	0	0	0	0	0	0	0%	0	0%
Exposure	0	0	0	0	0	0	0	4	3	1	0	0	3	47%	0	0%
Equipment Malfunction	0	0	0	0	0	0	0	0	0	1	0	0	1	18%	6	80%
ACS Expired	0	0	0	0	0	0	0	0	0	0	0	0	0	0%	0	0%
Total:	3	0	0	2	3	1	0	4	3	2	1	2	6	100%	7	100%
Summary Metrics																
Daily Average Vehicle Passes	1,001	933	936	1,024	1,085	1,140	1,217	1,328	1,119	1,218	1,298	1,152	Year to Date Monthly Average		2012 Monthly Average	
Average Issued Speed	24	28	22	24	25	24	25	23	31	22	26	24	1,121		971	
Average Issued Red Seconds	18.9	33.5	20.5	42.7	38.7	75.0	25.5	33.5	0.9	55.1	21.5	32.9	33		15.6	
Citation / Violation Issuance Rate	13%	14%	23%	14%	12%	19%	11%	8%	4%	26%	21%	31%	16%		22%	
Controllable Issuance Rate	40%	100%	100%	67%	50%	80%	100%	43%	25%	78%	80%	71%	69%		90%	



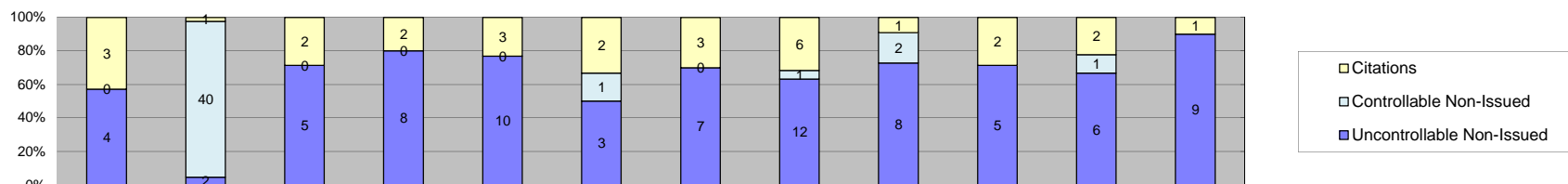
Los Angeles County MTA Gold Line
 Approach Summary Report
 Location 4019: WB to SB 3rd @ Mednik



Events	Jan-13	Feb-13	Mar-13	Apr-13	May-13	Jun-13	Jul-13	Aug-13	Sep-13	Oct-13	Nov-13	Dec-13	Year to Date Monthly Average		2012 Monthly Average	
	Quantity	Quantity	Quantity	Quantity	Quantity	Quantity	Quantity	Quantity	Quantity	Quantity	Quantity	Quantity	Quantity	%	Quantity	%
Non-Violations	244	204	254	211	277	191	287	263	252	259	249	238	244	96%	246	95%
Violations	11	5	10	10	9	4	11	15	13	10	9	11	11	4%	13	5%
Total:	255	209	264	221	286	195	298	278	265	269	258	249	254	100%	259	100%
Violations																
Uncontrollable Non-Issued	8	3	9	8	6	3	11	13	11	4	5	10	8	66%	11	78%
Controllable Non-Issued	0	0	0	0	0	0	0	1	0	3	2	0	2	17%	0	0%
Citations	3	2	1	2	3	1	0	1	2	3	2	1	2	17%	3	22%
Total:	11	5	10	10	9	4	11	15	13	10	9	11	11	100%	13	100%
Non-Violations																
Rear Axle Violation	0	0	0	0	0	0	0	0	0	0	0	0	0	0%	0	0%
Emergency Vehicle	24	27	31	15	17	9	24	21	19	28	24	24	22	9%	24	10%
Right Turn	0	0	0	0	0	0	0	0	0	0	0	0	0	0%	0	0%
No Violation Occurred	220	177	223	196	260	182	263	242	233	231	225	214	222	91%	222	90%
Total:	244	204	254	211	277	191	287	263	252	259	249	238	244	100%	246	100%
Uncontrollable Non-Issued Violations																
No Plate	0	0	0	3	2	0	2	3	1	0	1	2	2	15%	2	10%
Out of State Plate	0	0	0	0	0	0	1	1	0	0	0	0	1	7%	1	5%
Glare on Plate	0	0	0	0	0	0	1	1	0	0	0	0	1	7%	1	5%
Illegible Plate	2	1	2	1	0	1	4	2	1	0	2	2	2	13%	4	21%
Plate Obstructed	0	0	0	0	0	0	0	0	0	0	0	0	0	0%	1	5%
Windshield Glare	1	0	0	1	2	0	0	1	1	1	1	0	1	8%	1	5%
Driver Obstructed	0	0	0	1	1	0	0	0	1	0	0	2	1	9%	1	5%
Car Obstructed	0	0	0	0	0	0	0	1	0	0	0	0	1	7%	4	22%
No DMV Match Found	1	2	3	0	0	1	3	3	4	2	0	3	2	18%	2	8%
LASD Expired	0	0	0	0	0	0	0	0	0	0	0	0	0	0%	0	0%
LASD Return	4	0	4	2	1	1	0	1	3	1	1	1	2	14%	2	12%
Other	0	0	0	0	0	0	0	0	0	0	0	0	0	0%	0	0%
Total:	8	3	9	8	6	3	11	13	11	4	5	10	14	100%	18	100%
Controllable Non-Issued Violations																
Framing of Plate	0	0	0	0	0	0	0	0	0	0	0	0	0	0%	0	0
Focus / Clarity of Plate	0	0	0	0	0	0	0	0	0	3	0	0	3	60%	0	0
Dark Interior	0	0	0	0	0	0	0	0	0	0	1	0	1	20%	0	0
Framing of Driver	0	0	0	0	0	0	0	0	0	0	0	0	0	0%	0	0
Focus / Clarity of Driver	0	0	0	0	0	0	0	0	0	0	0	0	0	0%	0	0
Framing of Car	0	0	0	0	0	0	0	0	0	0	0	0	0	0%	0	0
Data/Operator Error	0	0	0	0	0	0	0	0	0	0	0	0	0	0%	0	0
Exposure	0	0	0	0	0	0	0	1	0	0	1	0	1	20%	0	0
Equipment Malfunction	0	0	0	0	0	0	0	0	0	0	0	0	0	0%	0	0
ACS Expired	0	0	0	0	0	0	0	0	0	0	0	0	0	0%	0	0
Total:	0	0	0	0	0	0	0	1	0	3	2	0	5	100%	0	0%
Summary Metrics																
Daily Average Vehicle Passes	603	629	662	679	752	820	618	750	952	819	650	750	Year to Date Monthly Average		2012 Monthly Average	
Average Issued Speed	33	27	22	26	23	15	0	26	22	22	27	30	724		533	
Average Issued Red Seconds	33.4	50.0	99.9	50.1	99.9	99.9	0	81.8	0.3	99.9	0.2	0.3	56		46.4	
Citation / Violation Issuance Rate	27%	40%	10%	20%	33%	25%	0%	7%	15%	30%	22%	9%	22%		22%	
Controllable Issuance Rate	100%	100%	100%	100%	100%	100%	0%	50%	100%	50%	50%	100%	86%		100%	



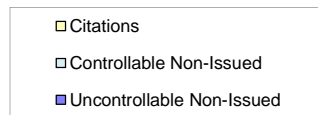
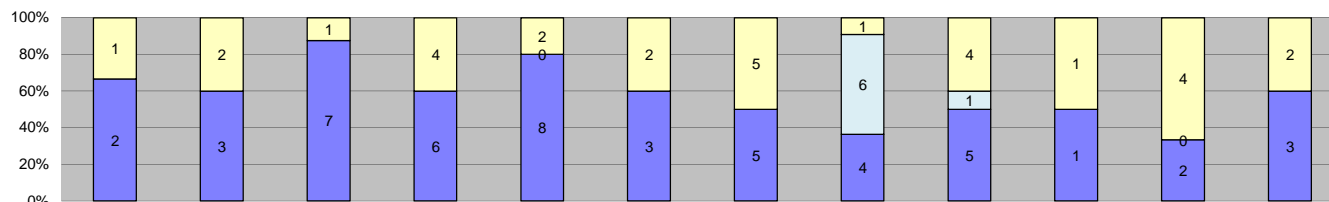
Los Angeles County MTA Gold Line
 Approach Summary Report
 Location 4027: EB to NB 3rd @ Arizona



Events	Jan-13	Feb-13	Mar-13	Apr-13	May-13	Jun-13	Jul-13	Aug-13	Sep-13	Oct-13	Nov-13	Dec-13	Year to Date Monthly Average		2012 Monthly Average	
	Quantity	Quantity	Quantity	Quantity	Quantity	Quantity	Quantity	Quantity	Quantity	Quantity	Quantity	Quantity	Quantity	%	Quantity	%
Non-Violations	349	264	432	484	467	291	366	491	401	549	370	401	405	97%	521	96%
Violations	7	43	7	10	13	6	10	19	11	7	9	10	13	3%	21	4%
Total:	356	307	439	494	480	297	376	510	412	556	379	411	418	100%	541	100%
Violations																
Uncontrollable Non-Issued	4	2	5	8	10	3	7	12	8	5	6	9	7	37%	16	43%
Controllable Non-Issued	0	40	0	0	0	1	0	1	2	0	1	0	9	50%	19	51%
Citations	3	1	2	2	3	2	3	6	1	2	2	1	2	13%	2	7%
Total:	7	43	7	10	13	6	10	19	11	7	9	10	18	100%	36	100%
Non-Violations																
Rear Axle Violation	1	0	0	0	0	0	1	0	0	0	0	0	1	0%	2	0%
Emergency Vehicle	5	1	5	0	0	6	9	8	2	6	5	2	5	1%	6	1%
Right Turn	0	0	0	0	0	0	0	0	0	0	0	0	0	0%	0	0%
No Violation Occurred	343	263	427	484	467	285	356	483	399	543	365	399	401	99%	515	99%
Total:	349	264	432	484	467	291	366	491	401	549	370	401	407	100%	522	100%
Uncontrollable Non-Issued Violations																
No Plate	2	1	2	1	2	0	2	3	2	1	2	3	2	17%	2	7%
Out of State Plate	0	0	1	1	0	0	0	1	0	0	0	0	1	9%	0	0%
Glare on Plate	0	0	0	0	0	0	0	0	0	0	0	0	0	0%	1	4%
Illegible Plate	0	1	2	1	1	1	2	2	0	1	0	0	1	13%	6	24%
Plate Obstructed	0	0	0	0	0	0	0	0	0	0	0	0	0	0%	3	10%
Windshield Glare	1	0	0	0	1	1	0	0	2	1	1	1	1	10%	1	5%
Driver Obstructed	0	0	0	2	2	0	1	3	1	1	0	3	2	17%	2	9%
Car Obstructed	0	0	0	0	0	0	0	0	0	0	0	0	0	0%	6	22%
No DMV Match Found	0	0	0	1	1	0	0	2	1	1	1	1	1	10%	2	6%
LASD Expired	0	0	0	0	0	0	1	0	0	0	0	0	1	9%	1	4%
LASD Return	1	0	0	2	3	1	1	1	2	0	2	1	2	14%	2	8%
Other	0	0	0	0	0	0	0	0	0	0	0	0	0	0%	0	0%
Total:	4	2	5	8	10	3	7	12	8	5	6	9	11	100%	26	100%
Controllable Non-Issued Violations																
Framing of Plate	0	0	0	0	0	0	0	0	0	0	0	0	0	0%	0	0%
Focus / Clarity of Plate	0	0	0	0	0	0	0	0	0	0	0	0	0	0%	0	0%
Dark Interior	0	0	0	0	0	0	0	0	0	0	0	0	0	0%	0	0%
Framing of Driver	0	0	0	0	0	0	0	0	0	0	0	0	0	0%	0	0%
Focus / Clarity of Driver	0	0	0	0	0	0	0	0	0	0	0	0	0	0%	0	0%
Framing of Car	0	0	0	0	0	0	0	0	0	0	0	0	0	0%	1	3%
Data/Operator Error	0	0	0	0	0	1	0	0	0	0	0	0	1	2%	0	0%
Exposure	0	0	0	0	0	0	0	1	2	0	1	0	1	3%	0	0%
Equipment Malfunction	0	40	0	0	0	0	0	0	0	0	0	0	40	94%	36	97%
ACS Expired	0	0	0	0	0	0	0	0	0	0	0	0	0	0%	0	0%
Total:	0	40	0	0	0	1	0	1	2	0	1	0	42	100%	37	100%
Summary Metrics																
Daily Average Vehicle Passes	440	481	550	545	596	619	667	521	750	619	672	667	Year to Date Monthly Average		2012 Monthly Average	
Average Issued Speed	19	19	21	17	19	24	20	19	18	15	15	15	594		424	
Average Issued Red Seconds	44.6	60.8	99.9	64.1	66.7	99.9	48.5	46.5	99.9	0.4	99.9	71.9	67		44.5	
Citation / Violation Issuance Rate	43%	2%	29%	20%	23%	33%	30%	32%	9%	29%	22%	10%	23%		17%	
Controllable Issuance Rate	100%	2%	100%	100%	100%	67%	100%	86%	33%	100%	67%	100%	80%		86%	



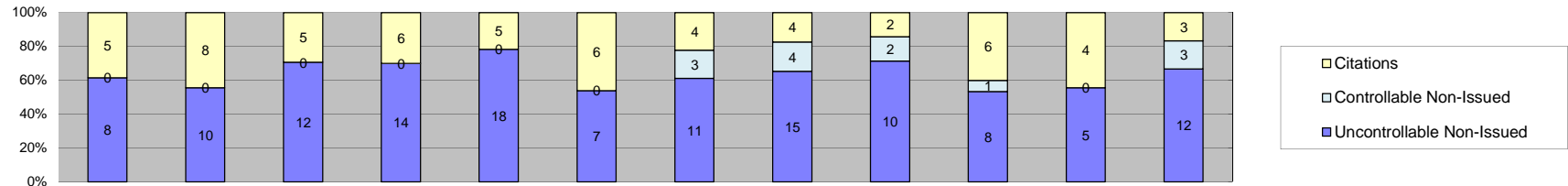
Los Angeles County MTA Gold Line
 Approach Summary Report
 Location 4029: WB to SB 3rd @ Arizona



Events	Jan-13	Feb-13	Mar-13	Apr-13	May-13	Jun-13	Jul-13	Aug-13	Sep-13	Oct-13	Nov-13	Dec-13	Year to Date Monthly Average		2012 Monthly Average	
	Quantity	Quantity	Quantity	Quantity	Quantity	Quantity	Quantity	Quantity	Quantity	Quantity	Quantity	Quantity	Quantity	%	Quantity	%
Non-Violations	138	152	136	192	209	109	193	169	196	181	196	149	168	96%	176	93%
Violations	3	5	8	10	10	5	10	11	10	2	6	5	7	4%	13	7%
Total:	141	157	144	202	219	114	203	180	206	183	202	154	175	100%	189	100%
Violations																
Uncontrollable Non-Issued	2	3	7	6	8	3	5	4	5	1	2	3	4	41%	10	60%
Controllable Non-Issued	0	0	0	0	0	0	0	6	1	0	0	0	4	35%	5	27%
Citations	1	2	1	4	2	2	5	1	4	1	4	2	2	24%	2	13%
Total:	3	5	8	10	10	5	10	11	10	2	6	5	10	100%	17	100%
Non-Violations																
Rear Axle Violation	0	1	0	0	0	0	0	0	0	0	0	1	1	1%	1	1%
Emergency Vehicle	11	1	3	1	3	8	15	10	9	14	14	7	8	5%	8	4%
Right Turn	1	0	0	0	0	0	0	0	0	0	0	0	1	1%	0	0%
No Violation Occurred	126	150	133	191	206	101	178	159	187	167	182	141	160	94%	169	95%
Total:	138	152	136	192	209	109	193	169	196	181	196	149	170	100%	177	100%
Uncontrollable Non-Issued Violations																
No Plate	0	0	1	2	5	1	1	1	1	1	1	0	2	20%	2	9%
Out of State Plate	0	0	0	0	0	0	0	0	0	0	0	0	0	0%	1	5%
Glare on Plate	0	0	0	0	0	0	0	0	0	0	0	0	0	0%	5	21%
Illegible Plate	1	2	3	2	2	2	1	1	0	0	0	1	2	21%	6	27%
Plate Obstructed	0	0	0	0	0	0	0	0	0	0	0	0	0	0%	0	0%
Windshield Glare	0	0	1	0	0	0	1	1	0	0	0	0	1	13%	1	5%
Driver Obstructed	0	0	0	0	0	0	2	0	1	0	0	0	2	19%	1	5%
Car Obstructed	0	0	0	0	0	0	0	0	0	0	0	0	0	0%	2	9%
No DMV Match Found	1	1	1	1	1	0	0	0	2	0	1	1	1	14%	2	8%
LASD Expired	0	0	0	0	0	0	0	0	0	0	0	0	0	0%	2	7%
LASD Return	0	0	1	1	0	0	0	1	1	0	0	1	1	13%	1	6%
Other	0	0	0	0	0	0	0	0	0	0	0	0	0	0%	0	0%
Total:	2	3	7	6	8	3	5	4	5	1	2	3	8	100%	22	100%
Controllable Non-Issued Violations																
Framing of Plate	0	0	0	0	0	0	0	0	0	0	0	0	0	0%	0	0%
Focus / Clarity of Plate	0	0	0	0	0	0	0	0	0	0	0	0	0	0%	0	0%
Dark Interior	0	0	0	0	0	0	0	0	0	0	0	0	0	0%	0	0%
Framing of Driver	0	0	0	0	0	0	0	0	0	0	0	0	0	0%	0	0%
Focus / Clarity of Driver	0	0	0	0	0	0	0	0	0	0	0	0	0	0%	0	0%
Framing of Car	0	0	0	0	0	0	0	0	0	0	0	0	0	0%	0	0%
Data/Operator Error	0	0	0	0	0	0	0	0	0	0	0	0	0	0%	0	0%
Exposure	0	0	0	0	0	0	0	6	1	0	0	0	4	100%	1	11%
Equipment Malfunction	0	0	0	0	0	0	0	0	0	0	0	0	0	0%	8	89%
ACS Expired	0	0	0	0	0	0	0	0	0	0	0	0	0	0%	0	0%
Total:	0	0	0	0	0	0	0	6	1	0	0	0	4	100%	9	100%
Summary Metrics																
Daily Average Vehicle Passes	453	448	490	416	452	522	567	632	518	667	632	637	Year to Date Monthly Average		2012 Monthly Average	
Average Issued Speed	19	20	20	16	19	18	22	17	18	21	17	16	536		321	
Average Issued Red Seconds	1.0	50.6	0.4	79.9	50.2	50.1	87.0	0.1	50.2	0.4	99.6	85.8	46		50.8	
Citation / Violation Issuance Rate	33%	40%	13%	40%	20%	40%	50%	9%	40%	50%	67%	40%	37%		26%	
Controllable Issuance Rate	100%	100%	100%	100%	100%	100%	100%	14%	80%	100%	100%	100%	91%		89%	



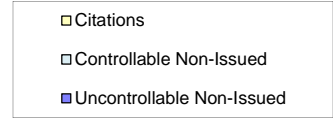
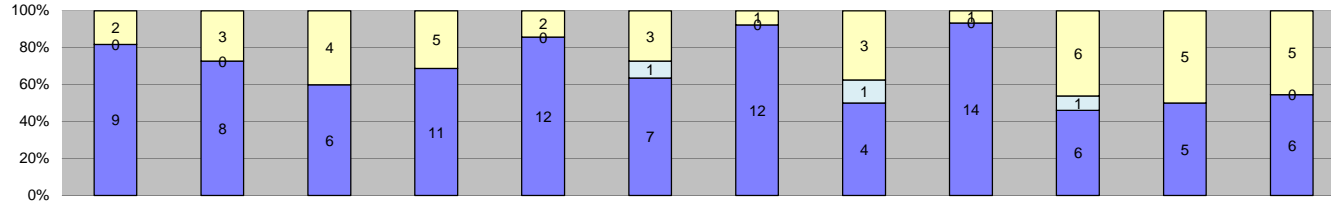
Los Angeles County MTA Gold Line
 Approach Summary Report
 Location 4037: EB to NB 3rd @ McDonnell



Events	Jan-13	Feb-13	Mar-13	Apr-13	May-13	Jun-13	Jul-13	Aug-13	Sep-13	Oct-13	Nov-13	Dec-13	Year to Date Monthly Average		2012 Monthly Average	
	Quantity	Quantity	Quantity	Quantity	Quantity	Quantity	Quantity	Quantity	Quantity	Quantity	Quantity	Quantity	Quantity	%	Quantity	%
Non-Violations	457	470	557	531	706	389	528	643	559	598	337	494	522	97%	511	93%
Violations	13	18	17	20	23	13	18	23	14	15	9	18	17	3%	36	7%
Total:	470	488	574	551	729	402	546	666	573	613	346	512	539	100%	548	100%
Violations																
Uncontrollable Non-Issued	8	10	12	14	18	7	11	15	10	8	5	12	11	59%	18	28%
Controllable Non-Issued	0	0	0	0	0	0	3	4	2	1	0	3	3	14%	41	64%
Citations	5	8	5	6	5	6	4	4	2	6	4	3	5	26%	5	8%
Total:	13	18	17	20	23	13	18	23	14	15	9	18	18	100%	63	100%
Non-Violations																
Rear Axle Violation	0	0	0	0	0	0	0	0	0	0	0	0	0	0%	2	0%
Emergency Vehicle	12	2	3	0	3	1	3	3	4	5	0	0	4	1%	4	1%
Right Turn	0	0	0	0	0	0	0	0	0	0	0	0	0	0%	0	0%
No Violation Occurred	445	468	554	531	703	388	525	640	555	593	337	494	519	99%	507	99%
Total:	457	470	557	531	706	389	528	643	559	598	337	494	523	100%	513	100%
Uncontrollable Non-Issued Violations																
No Plate	2	1	0	1	3	2	2	5	1	1	2	4	2	14%	3	12%
Out of State Plate	0	0	0	0	0	1	1	1	1	0	0	0	1	6%	0	0%
Glare on Plate	0	0	0	0	0	0	0	0	0	0	0	0	0	0%	1	4%
Illegible Plate	0	1	3	3	2	0	0	0	1	2	1	0	2	12%	5	19%
Plate Obstructed	0	0	0	0	0	0	0	0	0	0	0	0	0	0%	0	0%
Windshield Glare	1	1	2	0	1	3	0	3	2	2	2	1	2	12%	2	6%
Driver Obstructed	1	1	1	1	3	0	1	2	1	1	0	0	1	9%	2	6%
Car Obstructed	0	0	1	0	0	0	0	0	0	0	0	1	1	6%	6	23%
No DMV Match Found	1	3	2	5	2	1	1	2	2	1	0	0	2	12%	3	11%
LASD Expired	0	0	0	1	0	0	1	0	0	0	0	1	1	6%	2	9%
LASD Return	3	3	3	3	7	0	5	3	2	1	0	5	4	22%	2	9%
Other	0	0	0	0	0	0	0	0	0	0	0	0	0	0%	0	0%
Total:	8	10	12	14	18	7	11	15	10	8	5	12	16	100%	26	100%
Controllable Non-Issued Violations																
Framing of Plate	0	0	0	0	0	0	0	0	0	0	0	0	0	0%	0	0%
Focus / Clarity of Plate	0	0	0	0	0	0	0	0	0	0	0	0	0	0%	0	0%
Dark Interior	0	0	0	0	0	0	0	0	0	1	0	2	2	24%	1	2%
Framing of Driver	0	0	0	0	0	0	0	0	0	0	0	0	0	0%	0	0%
Focus / Clarity of Driver	0	0	0	0	0	0	0	0	0	0	0	0	0	0%	0	0%
Framing of Car	0	0	0	0	0	0	0	0	0	0	0	0	0	0%	0	0%
Data/Operator Error	0	0	0	0	0	0	0	2	0	0	0	0	2	32%	0	0%
Exposure	0	0	0	0	0	0	1	1	2	0	0	1	1	20%	0	0%
Equipment Malfunction	0	0	0	0	0	0	2	1	0	0	0	0	2	24%	54	98%
ACS Expired	0	0	0	0	0	0	0	0	0	0	0	0	0	0%	0	0%
Total:	0	0	0	0	0	0	3	4	2	1	0	3	6	100%	55	100%
Summary Metrics																
Daily Average Vehicle Passes	674	607	744	782	849	905	817	965	785	895	1,042	915	Year to Date Monthly Average		2012 Monthly Average	
Average Issued Speed	17	18	20	19	17	18	19	18	19	17	18	17	832		592	
Average Issued Red Seconds	48.0	18.1	47.3	33.8	54.8	47.6	53.7	65.0	0.4	49.6	42.4	0.3	38		46.6	
Citation / Violation Issuance Rate	38%	44%	29%	30%	22%	46%	22%	17%	14%	40%	44%	17%	30%		20%	
Controllable Issuance Rate	100%	100%	100%	100%	100%	100%	57%	50%	50%	86%	100%	50%	83%		75%	



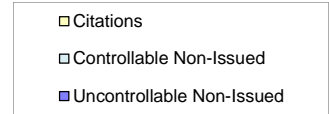
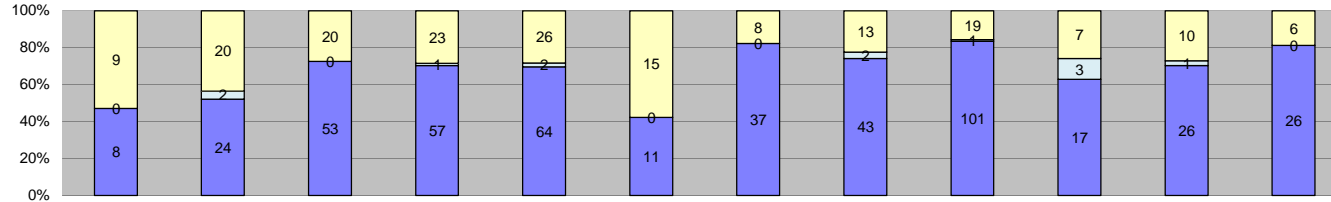
Los Angeles County MTA Gold Line
 Approach Summary Report
 Location 4039: WB to SB 3rd @ McDonnell



Events	Jan-13	Feb-13	Mar-13	Apr-13	May-13	Jun-13	Jul-13	Aug-13	Sep-13	Oct-13	Nov-13	Dec-13	Year to Date Monthly Average		2012 Monthly Average	
													Quantity	%	Quantity	%
Non-Violations	266	225	270	236	254	192	274	291	302	316	311	285	269	96%	264	95%
Violations	11	11	10	16	14	11	13	8	15	13	10	11	12	4%	15	5%
Total:	277	236	280	252	268	203	287	299	317	329	321	296	280	100%	279	100%
Violations																
Uncontrollable Non-Issued	9	8	6	11	12	7	12	4	14	6	5	6	8	66%	11	69%
Controllable Non-Issued	0	0	0	0	0	1	0	1	0	1	0	0	1	8%	2	9%
Citations	2	3	4	5	2	3	1	3	1	6	5	5	3	26%	4	22%
Total:	11	11	10	16	14	11	13	8	15	13	10	11	13	100%	16	100%
Non-Violations																
Rear Axle Violation	0	0	0	0	0	0	0	0	0	0	0	0	0	0%	0	0%
Emergency Vehicle	9	4	7	3	4	6	6	8	7	7	4	5	6	2%	9	3%
Right Turn	0	0	0	0	0	0	0	0	0	0	0	0	0	0%	0	0%
No Violation Occurred	257	221	263	233	250	186	268	283	295	309	307	280	263	98%	255	97%
Total:	266	225	270	236	254	192	274	291	302	316	311	285	269	100%	264	100%
Uncontrollable Non-Issued Violations																
No Plate	0	1	1	1	1	2	1	1	2	2	3	1	1	10%	2	8%
Out of State Plate	0	1	1	0	0	0	0	0	1	0	0	0	1	7%	1	5%
Glare on Plate	0	0	0	0	0	0	0	0	0	1	0	0	1	7%	3	12%
Illegible Plate	3	1	1	4	5	0	4	0	2	2	0	1	3	17%	4	19%
Plate Obstructed	0	0	0	0	1	0	0	0	0	0	0	0	1	7%	1	5%
Windshield Glare	1	0	0	0	0	0	0	0	0	0	1	0	1	7%	1	5%
Driver Obstructed	2	0	0	6	1	1	0	1	1	0	0	1	2	13%	1	6%
Car Obstructed	0	0	0	0	0	0	0	0	0	0	0	0	0	0%	4	19%
No DMV Match Found	1	4	2	4	0	0	3	2	6	0	0	2	3	20%	2	8%
LASD Expired	0	0	0	0	0	0	0	0	0	0	0	0	0	0%	2	7%
LASD Return	2	1	1	0	0	4	4	0	2	1	1	1	2	13%	2	7%
Other	0	0	0	0	0	0	0	0	0	0	0	0	0	0%	0	0%
Total:	9	8	6	11	12	7	12	4	14	6	5	6	15	100%	22	100%
Controllable Non-Issued Violations																
Framing of Plate	0	0	0	0	0	0	0	0	0	0	0	0	0	0%	1	33%
Focus / Clarity of Plate	0	0	0	0	0	0	0	0	0	0	0	0	0	0%	0	0%
Dark Interior	0	0	0	0	0	0	0	0	0	1	0	0	1	33%	0	0%
Framing of Driver	0	0	0	0	0	1	0	0	0	0	0	0	1	33%	0	0%
Focus / Clarity of Driver	0	0	0	0	0	0	0	0	0	0	0	0	0	0%	0	0%
Framing of Car	0	0	0	0	0	0	0	0	0	0	0	0	0	0%	0	0%
Data/Operator Error	0	0	0	0	0	0	0	0	0	0	0	0	0	0%	0	0%
Exposure	0	0	0	0	0	0	0	1	0	0	0	0	1	33%	2	67%
Equipment Malfunction	0	0	0	0	0	0	0	0	0	0	0	0	0	0%	0	0%
ACS Expired	0	0	0	0	0	0	0	0	0	0	0	0	0	0%	0	0%
Total:	0	0	0	0	0	1	0	1	0	1	0	0	3	100%	3	100%
Summary Metrics																
Daily Average Vehicle Passes	494	508	558	460	548	632	518	672	585	549	653	617	Year to Date Monthly Average		2012 Monthly Average	
Average Issued Speed	21	17	18	19	17	18	16	18	18	20	19	19	566		443	
Average Issued Red Seconds	50.2	67.7	64.4	77.5	29.3	54.4	99.9	66.7	99.9	47.7	84.5	40.3	65		68.5	
Citation / Violation Issuance Rate	18%	27%	40%	31%	14%	27%	8%	38%	7%	46%	50%	45%	29%		26%	
Controllable Issuance Rate	100%	100%	100%	100%	100%	75%	100%	75%	100%	86%	100%	100%	95%		94%	



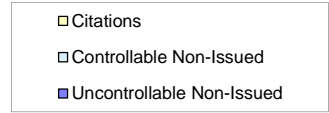
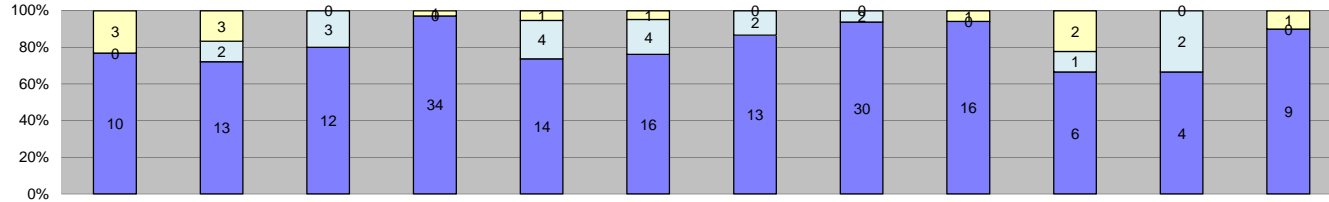
Los Angeles County MTA Gold Line
 Approach Summary Report
 Location 4047: EB to NB 3rd @ Ford



Events	Jan-13	Feb-13	Mar-13	Apr-13	May-13	Jun-13	Jul-13	Aug-13	Sep-13	Oct-13	Nov-13	Dec-13	Year to Date Monthly Average		2012 Monthly Average	
													Quantity	%	Quantity	%
Non-Violations	337	423	492	409	424	207	468	422	480	363	428	407	405	88%	407	92%
Violations	17	46	73	81	92	26	45	58	121	27	37	32	55	12%	34	8%
Total:	354	469	565	490	516	233	513	480	601	390	465	439	460	100%	441	100%
Violations																
Uncontrollable Non-Issued	8	24	53	57	64	11	37	43	101	17	26	26	39	70%	26	73%
Controllable Non-Issued	0	2	0	1	2	0	0	2	1	3	1	0	2	3%	1	4%
Citations	9	20	20	23	26	15	8	13	19	7	10	6	15	27%	8	23%
Total:	17	46	73	81	92	26	45	58	121	27	37	32	55	100%	35	100%
Non-Violations																
Rear Axle Violation	0	3	1	0	0	0	0	0	0	0	0	0	2	0%	0	0%
Emergency Vehicle	6	7	4	3	4	3	10	5	7	7	9	6	6	1%	6	2%
Right Turn	0	0	0	0	0	0	0	0	0	0	0	0	0	0%	0	0%
No Violation Occurred	331	413	487	406	420	204	458	417	473	356	419	401	399	98%	401	98%
Total:	337	423	492	409	424	207	468	422	480	363	428	407	407	100%	407	100%
Uncontrollable Non-Issued Violations																
No Plate	0	4	8	7	8	2	5	4	12	2	4	2	5	11%	4	10%
Out of State Plate	0	1	1	1	1	0	1	2	0	1	0	0	1	2%	1	3%
Glare on Plate	0	0	1	0	0	0	1	1	11	0	0	0	4	7%	3	7%
Illegible Plate	5	9	13	19	14	1	10	11	22	2	6	2	10	20%	7	18%
Plate Obstructed	0	1	2	0	1	0	0	0	0	0	0	0	1	3%	1	3%
Windshield Glare	1	1	5	4	12	3	2	11	17	1	5	4	6	12%	2	6%
Driver Obstructed	1	1	7	9	9	1	5	1	9	5	1	5	5	9%	2	4%
Car Obstructed	1	2	4	0	4	0	0	0	2	0	0	0	3	5%	6	16%
No DMV Match Found	0	3	7	6	3	3	6	6	11	3	4	0	5	11%	3	7%
LASD Expired	0	0	0	1	0	0	0	0	0	0	0	2	2	3%	5	14%
LASD Return	0	2	5	10	12	1	7	7	17	3	6	11	7	16%	4	12%
Other	0	0	0	0	0	0	0	0	0	0	0	0	0	0%	0	0%
Total:	8	24	53	57	64	11	37	43	101	17	26	26	47	100%	37	100%
Controllable Non-Issued Violations																
Framing of Plate	0	0	0	0	0	0	0	0	0	0	0	0	0	0%	1	17%
Focus / Clarity of Plate	0	0	0	0	0	0	0	0	0	1	0	0	1	19%	1	17%
Dark Interior	0	0	0	1	2	0	0	0	1	1	0	0	1	24%	1	17%
Framing of Driver	0	1	0	0	0	0	0	1	0	1	0	0	1	19%	1	17%
Focus / Clarity of Driver	0	0	0	0	0	0	0	0	0	0	0	0	0	0%	0	0%
Framing of Car	0	1	0	0	0	0	0	0	0	0	1	0	1	19%	0	0%
Data/Operator Error	0	0	0	0	0	0	0	0	0	0	0	0	0	0%	0	0%
Exposure	0	0	0	0	0	0	0	1	0	0	0	0	1	19%	1	17%
Equipment Malfunction	0	0	0	0	0	0	0	0	0	0	0	0	0	0%	0	0%
ACS Expired	0	0	0	0	0	0	0	0	0	0	0	0	0	0%	1	17%
Total:	0	2	0	1	2	0	0	2	1	3	1	0	5	100%	6	100%
Summary Metrics																
Daily Average Vehicle Passes	819	1,152	1,257	1,238	1,298	1,338	1,218	1,328	1,185	1,262	1,337	1,262	Year to Date Monthly Average		2012 Monthly Average	
Average Issued Speed	20	21	20	20	20	19	20	19	18	19	19	20	1,225		720	
Average Issued Red Seconds	11.5	11.1	11.6	5.6	11.6	12.8	19.2	11.1	35.6	36.0	0.6	17.0	15		30.4	
Citation / Violation Issuance Rate	53%	43%	27%	28%	28%	58%	18%	22%	16%	26%	27%	19%	30%		24%	
Controllable Issuance Rate	100%	91%	100%	96%	93%	100%	100%	87%	95%	70%	91%	100%	94%		92%	



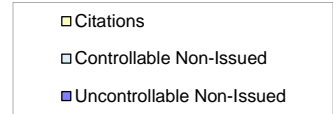
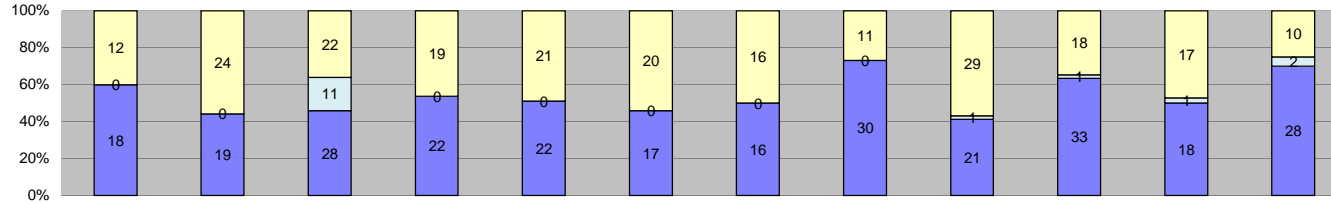
Los Angeles County MTA Gold Line
 Approach Summary Report
 Location 4049: WB to SB 3rd @ Ford



Events	Jan-13	Feb-13	Mar-13	Apr-13	May-13	Jun-13	Jul-13	Aug-13	Sep-13	Oct-13	Nov-13	Dec-13	Year to Date Monthly Average		2012 Monthly Average	
													Quantity	%	Quantity	%
Non-Violations	193	178	195	175	180	124	171	188	170	201	170	178	177	91%	201	90%
Violations	13	18	15	35	19	21	15	32	17	9	6	10	18	9%	22	10%
Total:	206	196	210	210	199	145	186	220	187	210	176	188	194	100%	223	100%
Violations																
Uncontrollable Non-Issued	10	13	12	34	14	16	13	30	16	6	4	9	15	78%	18	71%
Controllable Non-Issued	0	2	3	0	4	4	2	2	0	1	2	0	3	13%	5	18%
Citations	3	3	0	1	1	1	0	0	1	2	0	1	2	9%	3	11%
Total:	13	18	15	35	19	21	15	32	17	9	6	10	19	100%	26	100%
Non-Violations																
Rear Axle Violation	0	0	0	0	0	0	1	0	0	0	0	0	1	1%	3	1%
Emergency Vehicle	15	9	16	4	7	19	29	18	19	32	14	20	17	9%	16	8%
Right Turn	0	0	0	0	0	0	0	0	0	0	0	0	0	0%	0	0%
No Violation Occurred	178	169	179	171	173	105	141	170	151	169	156	158	160	90%	185	91%
Total:	193	178	195	175	180	124	171	188	170	201	170	178	178	100%	204	100%
Uncontrollable Non-Issued Violations																
No Plate	2	3	1	4	2	2	1	5	1	1	1	3	2	10%	2	10%
Out of State Plate	0	0	0	0	0	0	0	0	0	0	0	0	0	0%	1	4%
Glare on Plate	0	1	2	0	0	0	1	1	1	0	1	0	1	5%	3	10%
Illegible Plate	6	7	7	23	2	11	7	17	10	4	1	1	8	37%	7	28%
Plate Obstructed	0	0	0	0	0	0	0	0	0	0	0	0	0	0%	2	8%
Windshield Glare	0	0	0	4	6	3	0	1	0	0	0	0	4	16%	2	6%
Driver Obstructed	0	0	1	3	3	0	1	0	1	1	0	0	2	8%	1	5%
Car Obstructed	0	0	0	0	0	0	2	0	0	0	0	0	2	9%	3	11%
No DMV Match Found	1	1	1	0	0	0	1	1	0	0	0	1	1	5%	1	5%
LASD Expired	0	0	0	0	0	0	0	0	0	0	0	0	0	0%	0	0%
LASD Return	1	1	0	0	1	0	0	5	3	0	1	4	2	10%	3	12%
Other	0	0	0	0	0	0	0	0	0	0	0	0	0	0%	0	0%
Total:	10	13	12	34	14	16	13	30	16	6	4	9	22	100%	25	100%
Controllable Non-Issued Violations																
Framing of Plate	0	0	0	0	0	0	0	0	0	0	0	0	0	0%	0	0%
Focus / Clarity of Plate	0	1	3	0	3	0	2	1	0	1	0	0	2	22%	3	22%
Dark Interior	0	0	0	0	0	0	0	0	0	0	0	0	0	0%	0	0%
Framing of Driver	0	1	0	0	0	0	0	0	0	0	0	0	1	12%	0	0%
Focus / Clarity of Driver	0	0	0	0	1	0	0	1	0	0	2	0	1	16%	1	9%
Framing of Car	0	0	0	0	0	0	0	0	0	0	0	0	0	0%	1	9%
Data/Operator Error	0	0	0	0	0	0	0	0	0	0	0	0	0	0%	0	0%
Exposure	0	0	0	0	0	4	0	0	0	0	0	0	4	49%	7	61%
Equipment Malfunction	0	0	0	0	0	0	0	0	0	0	0	0	0	0%	0	0%
ACS Expired	0	0	0	0	0	0	0	0	0	0	0	0	0	0%	0	0%
Total:	0	2	3	0	4	4	2	2	0	1	2	0	8	100%	12	100%
Summary Metrics																
Daily Average Vehicle Passes	811	765	887	867	951	1,008	885	995	926	952	1,052	994	Year to Date Monthly Average		2012 Monthly Average	
Average Issued Speed	20	22	0	21	22	22	0	0	18	19	0	26	924		757	
Average Issued Red Seconds	70.8	66.7	0	0.2	0.3	0.2	0	0	99.9	97.5	0	0.2	42		51.1	
Citation / Violation Issuance Rate	23%	17%	0%	3%	5%	5%	0%	0%	6%	22%	0%	10%	11%		13%	
Controllable Issuance Rate	100%	60%	0%	100%	20%	20%	0%	0%	100%	67%	0%	100%	71%		85%	



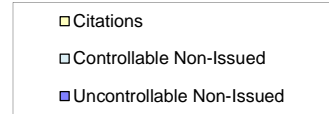
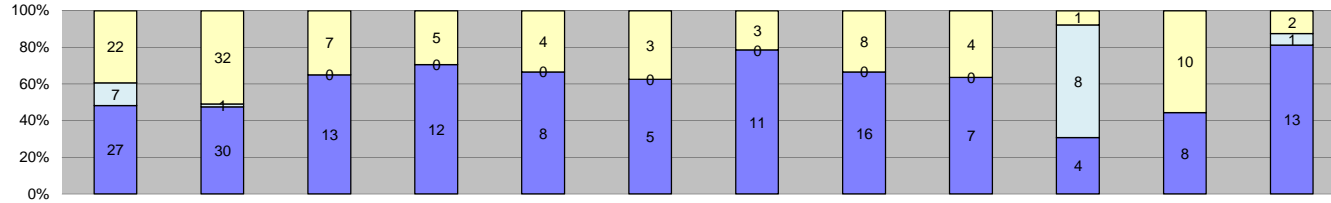
Los Angeles County MTA Gold Line
 Approach Summary Report
 Location 4057: EB to NB 3rd @ Eastern



Events	Jan-13	Feb-13	Mar-13	Apr-13	May-13	Jun-13	Jul-13	Aug-13	Sep-13	Oct-13	Nov-13	Dec-13	Year to Date Monthly Average		2012 Monthly Average	
	Quantity	Quantity	Quantity	Quantity	Quantity	Quantity	Quantity	Quantity	Quantity	Quantity	Quantity	Quantity	Quantity	%	%	%
Non-Violations	112	89	98	88	117	78	100	93	91	96	82	90	95	69%	100	68%
Violations	30	43	61	41	43	37	32	41	51	52	36	40	42	31%	47	32%
Total:	142	132	159	129	160	115	132	134	142	148	118	130	137	100%	147	100%
Violations																
Uncontrollable Non-Issued	18	19	28	22	22	17	16	30	21	33	18	28	23	51%	25	50%
Controllable Non-Issued	0	0	11	0	0	0	0	0	1	1	1	2	3	7%	3	7%
Citations	12	24	22	19	21	20	16	11	29	18	17	10	18	41%	22	43%
Total:	30	43	61	41	43	37	32	41	51	52	36	40	44	100%	50	100%
Non-Violations																
Rear Axle Violation	0	0	0	0	0	0	0	1	0	0	0	0	1	1%	1	1%
Emergency Vehicle	9	1	2	1	5	7	6	3	7	6	5	5	5	5%	7	7%
Right Turn	0	0	0	0	0	0	0	0	0	0	0	0	0	0%	0	0%
No Violation Occurred	103	88	96	87	112	71	94	89	84	90	77	85	90	94%	93	92%
Total:	112	89	98	88	117	78	100	93	91	96	82	90	95	100%	101	100%
Uncontrollable Non-Issued Violations																
No Plate	2	2	5	1	2	3	3	6	3	4	2	1	3	10%	3	10%
Out of State Plate	1	0	0	0	0	1	1	0	0	0	0	2	1	4%	1	3%
Glare on Plate	0	0	1	0	0	1	0	1	0	0	0	0	1	3%	1	4%
Illegible Plate	3	2	3	4	3	0	1	5	2	5	4	4	3	11%	5	14%
Plate Obstructed	0	2	1	2	1	1	0	0	1	0	0	0	1	5%	1	3%
Windshield Glare	0	0	2	2	5	2	1	0	1	1	3	1	2	7%	3	8%
Driver Obstructed	0	2	1	1	0	0	2	0	2	0	0	2	2	6%	2	6%
Car Obstructed	0	1	0	0	0	0	0	0	0	0	0	0	1	3%	2	7%
No DMV Match Found	9	8	10	8	7	5	5	10	2	9	5	10	7	26%	7	21%
LASD Expired	0	0	0	0	0	0	0	0	0	1	0	2	2	5%	2	7%
LASD Return	3	2	5	4	4	4	3	8	10	13	4	6	6	19%	5	15%
Other	0	0	0	0	0	0	0	0	0	0	0	0	0	0%	0	0%
Total:	18	19	28	22	22	17	16	30	21	33	18	28	29	100%	31	100%
Controllable Non-Issued Violations																
Framing of Plate	0	0	0	0	0	0	0	0	0	0	1	0	1	6%	3	42%
Focus / Clarity of Plate	0	0	0	0	0	0	0	0	0	1	0	0	1	6%	2	21%
Dark Interior	0	0	0	0	0	0	0	0	0	0	0	1	1	6%	1	14%
Framing of Driver	0	0	0	0	0	0	0	0	0	0	0	0	0	0%	0	0%
Focus / Clarity of Driver	0	0	0	0	0	0	0	0	0	0	0	0	0	0%	0	0%
Framing of Car	0	0	1	0	0	0	0	0	0	0	0	0	1	6%	0	0%
Data/Operator Error	0	0	10	0	0	0	0	0	0	0	0	0	10	63%	0	0%
Exposure	0	0	0	0	0	0	0	0	0	0	0	1	1	6%	2	23%
Equipment Malfunction	0	0	0	0	0	0	0	0	1	0	0	0	1	6%	0	0%
ACS Expired	0	0	0	0	0	0	0	0	0	0	0	0	0	0%	0	0%
Total:	0	0	11	0	0	0	0	0	1	1	1	2	16	100%	7	100%
Summary Metrics																
Daily Average Vehicle Passes	1,137	1,027	1,125	1,240	1,298	1,334	1,405	1,328	1,485	1,390	1,327	1,183	Year to Date Monthly Average		2012 Monthly Average	
Average Issued Speed	22	24	23	23	24	24	25	24	24	22	23	24	1,273		1,198	
Average Issued Red Seconds	5.4	4.0	1.2	0.4	4.6	7.5	12.5	1.3	4.8	17.7	8.3	5.0	6		10.8	
Citation / Violation Issuance Rate	40%	56%	36%	46%	49%	54%	50%	27%	57%	35%	47%	25%	43%		46%	
Controllable Issuance Rate	100%	100%	67%	100%	100%	100%	100%	100%	97%	95%	94%	83%	95%		95%	



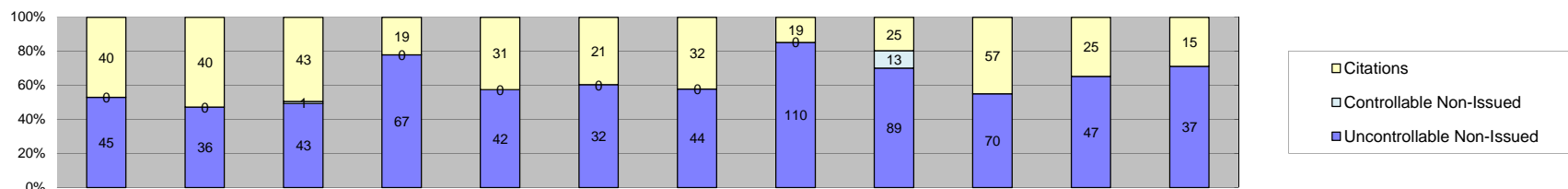
Los Angeles County MTA Gold Line
 Approach Summary Report
 Location 4059: WB to SB 3rd @ Eastern



Events	Jan-13	Feb-13	Mar-13	Apr-13	May-13	Jun-13	Jul-13	Aug-13	Sep-13	Oct-13	Nov-13	Dec-13	Year to Date Monthly Average		2012 Monthly Average	
													Quantity	%	Quantity	%
Non-Violations	110	109	107	83	94	65	84	98	79	91	80	99	92	80%	102	88%
Violations	56	63	20	17	12	8	14	24	11	13	18	16	23	20%	14	12%
Total:	166	172	127	100	106	73	98	122	90	104	98	115	114	100%	116	100%
Violations																
Uncontrollable Non-Issued	27	30	13	12	8	5	11	16	7	4	8	13	13	50%	9	58%
Controllable Non-Issued	7	1	0	0	0	0	0	0	0	8	0	1	4	17%	2	12%
Citations	22	32	7	5	4	3	3	8	4	1	10	2	8	33%	5	30%
Total:	56	63	20	17	12	8	14	24	11	13	18	16	26	100%	16	100%
Non-Violations																
Rear Axle Violation	1	0	0	0	0	0	0	0	0	0	0	0	1	1%	1	1%
Emergency Vehicle	24	19	17	9	18	21	22	10	21	24	20	25	19	21%	20	20%
Right Turn	0	0	0	0	0	0	0	0	0	0	0	0	0	0%	0	0%
No Violation Occurred	85	90	90	74	76	44	62	88	58	67	60	74	72	78%	81	79%
Total:	110	109	107	83	94	65	84	98	79	91	80	99	93	100%	103	100%
Uncontrollable Non-Issued Violations																
No Plate	3	5	2	2	3	0	2	2	3	1	1	3	2	13%	2	9%
Out of State Plate	0	0	0	0	0	0	0	0	0	0	0	0	0	0%	1	5%
Glare on Plate	0	0	0	0	0	0	0	0	0	0	0	0	0	0%	1	5%
Illegible Plate	8	3	4	2	1	1	4	2	0	1	0	2	3	15%	3	15%
Plate Obstructed	2	1	0	0	0	0	0	0	0	0	0	0	2	8%	1	5%
Windshield Glare	1	0	0	0	0	2	0	1	0	0	0	0	1	7%	1	5%
Driver Obstructed	0	2	1	2	1	1	0	2	1	0	0	2	2	8%	1	5%
Car Obstructed	1	4	1	1	0	0	0	0	0	0	1	1	2	8%	2	8%
No DMV Match Found	7	10	5	3	2	0	2	4	2	1	2	2	4	20%	4	20%
LASD Expired	0	0	0	0	0	0	0	0	0	0	0	1	1	5%	2	9%
LASD Return	5	5	0	2	1	1	3	5	1	1	4	2	3	15%	2	12%
Other	0	0	0	0	0	0	0	0	0	0	0	0	0	0%	0	0%
Total:	27	30	13	12	8	5	11	16	7	4	8	13	18	100%	18	100%
Controllable Non-Issued Violations																
Framing of Plate	0	1	0	0	0	0	0	0	0	0	0	0	1	7%	0	0%
Focus / Clarity of Plate	0	0	0	0	0	0	0	0	0	1	0	0	1	7%	0	0%
Dark Interior	0	0	0	0	0	0	0	0	0	0	0	0	0	0%	1	15%
Framing of Driver	0	0	0	0	0	0	0	0	0	0	0	0	0	0%	0	0%
Focus / Clarity of Driver	0	0	0	0	0	0	0	0	0	0	0	0	0	0%	0	0%
Framing of Car	0	0	0	0	0	0	0	0	0	1	0	0	1	7%	0	0%
Data/Operator Error	0	0	0	0	0	0	0	0	0	0	0	0	0	0%	0	0%
Exposure	0	0	0	0	0	0	0	0	0	6	0	1	4	26%	2	23%
Equipment Malfunction	7	0	0	0	0	0	0	0	0	0	0	0	7	52%	4	62%
ACS Expired	0	0	0	0	0	0	0	0	0	0	0	0	0	0%	0	0%
Total:	7	1	0	0	0	0	0	0	0	8	0	1	14	100%	7	100%
Summary Metrics																
Daily Average Vehicle Passes	584	645	640	556	653	718	752	856	753	786	1,000	718	Year to Date Monthly Average		2012 Monthly Average	
Average Issued Speed	24	22	25	27	22	27	19	23	22	15	23	23	722		467	
Average Issued Red Seconds	0.4	0.6	8.4	20.3	0.5	0.4	73.8	36.5	25.3	99.9	10.2	50.2	27		41.1	
Citation / Violation Issuance Rate	39%	51%	35%	29%	33%	38%	21%	33%	36%	8%	56%	13%	33%		30%	
Controllable Issuance Rate	76%	97%	100%	100%	100%	100%	100%	100%	100%	11%	100%	67%	88%		88%	



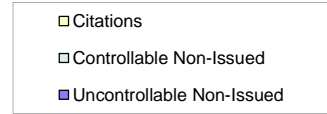
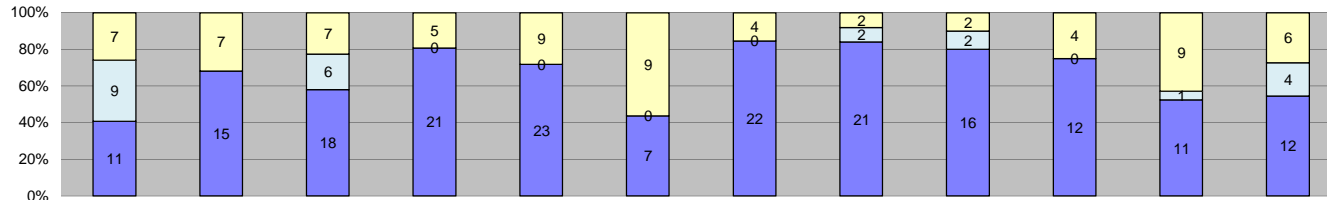
Los Angeles County MTA Gold Line
 Approach Summary Report
 Location 4069: WB to SB 3rd @ Downey



Events	Jan-13	Feb-13	Mar-13	Apr-13	May-13	Jun-13	Jul-13	Aug-13	Sep-13	Oct-13	Nov-13	Dec-13	Year to Date Monthly Average		2012 Monthly Average	
													Quantity	%	Quantity	%
Non-Violations	566	424	478	460	424	251	357	393	384	380	435	452	417	83%	445	83%
Violations	85	76	87	86	73	53	76	129	127	127	72	52	87	17%	91	17%
Total:	651	500	565	546	497	304	433	522	511	507	507	504	504	100%	536	100%
Violations																
Uncontrollable Non-Issued	45	36	43	67	42	32	44	110	89	70	47	37	55	59%	59	59%
Controllable Non-Issued	0	0	1	0	0	0	0	0	13	0	0	0	7	8%	16	16%
Citations	40	40	43	19	31	21	32	19	25	57	25	15	31	33%	26	26%
Total:	85	76	87	86	73	53	76	129	127	127	72	52	93	100%	101	100%
Non-Violations																
Rear Axle Violation	0	0	0	0	0	0	0	0	0	0	1	0	1	0%	1	0%
Emergency Vehicle	29	25	21	11	14	25	28	33	35	28	38	25	26	6%	23	5%
Right Turn	0	0	0	0	0	0	0	0	0	0	0	0	0	0%	0	0%
No Violation Occurred	537	399	457	449	410	226	329	360	349	352	396	427	391	94%	421	94%
Total:	566	424	478	460	424	251	357	393	384	380	435	452	418	100%	446	100%
Uncontrollable Non-Issued Violations																
No Plate	14	3	13	8	8	2	11	14	5	13	6	7	9	14%	8	10%
Out of State Plate	0	1	0	3	1	3	2	2	2	1	1	0	2	3%	2	2%
Glare on Plate	0	0	0	0	0	0	0	0	1	0	0	0	1	2%	0	0%
Illegible Plate	0	0	1	0	1	0	0	0	1	0	1	0	1	2%	1	1%
Plate Obstructed	0	0	1	0	0	0	0	1	0	0	1	0	1	2%	2	2%
Windshield Glare	1	0	4	7	4	3	6	26	8	2	4	3	6	10%	5	7%
Driver Obstructed	0	1	0	1	1	0	0	0	1	1	2	0	1	2%	1	2%
Car Obstructed	3	0	0	0	0	0	1	2	0	0	1	0	2	3%	9	11%
No DMV Match Found	13	12	11	18	15	7	11	21	29	25	15	9	16	25%	13	17%
LASD Expired	0	0	0	1	0	0	0	1	0	0	0	2	1	2%	12	16%
LASD Return	14	19	13	29	12	17	13	43	42	28	16	16	22	36%	24	31%
Other	0	0	0	0	0	0	0	0	0	0	0	0	0	0%	0	0%
Total:	45	36	43	67	42	32	44	110	89	70	47	37	61	100%	76	100%
Controllable Non-Issued Violations																
Framing of Plate	0	0	0	0	0	0	0	0	0	0	0	0	0	0%	0	0%
Focus / Clarity of Plate	0	0	0	0	0	0	0	0	0	0	0	0	0	0%	1	3%
Dark Interior	0	0	0	0	0	0	0	0	0	0	0	0	0	0%	1	3%
Framing of Driver	0	0	0	0	0	0	0	0	0	0	0	0	0	0%	0	0%
Focus / Clarity of Driver	0	0	0	0	0	0	0	0	0	0	0	0	0	0%	0	0%
Framing of Car	0	0	0	0	0	0	0	0	0	0	0	0	0	0%	0	0%
Data/Operator Error	0	0	0	0	0	0	0	0	0	0	0	0	0	0%	0	0%
Exposure	0	0	1	0	0	0	0	0	0	0	0	0	1	7%	1	3%
Equipment Malfunction	0	0	0	0	0	0	0	0	13	0	0	0	13	93%	29	88%
ACS Expired	0	0	0	0	0	0	0	0	0	0	0	0	0	0%	1	3%
Total:	0	0	1	0	0	0	0	0	13	0	0	0	14	100%	33	100%
Summary Metrics																
Daily Average Vehicle Passes	996	867	1,126	1,100	1,188	1,271	1,316	1,188	1,285	1,052	1,261	1,119	Year to Date Monthly Average		2012 Monthly Average	
Average Issued Speed	27	25	26	30	30	28	27	26	26	30	25	28	1,147		1,045	
Average Issued Red Seconds	35.0	32.2	43.4	43.8	54.5	50.4	50.6	34.8	32.0	34.9	46.0	41.2	42		50.9	
Citation / Violation Issuance Rate	47%	53%	49%	22%	42%	40%	42%	15%	20%	45%	35%	29%	37%		29%	
Controllable Issuance Rate	100%	100%	98%	100%	100%	100%	100%	100%	66%	100%	100%	100%	97%		90%	



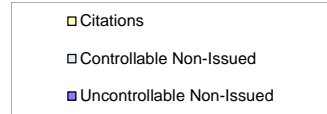
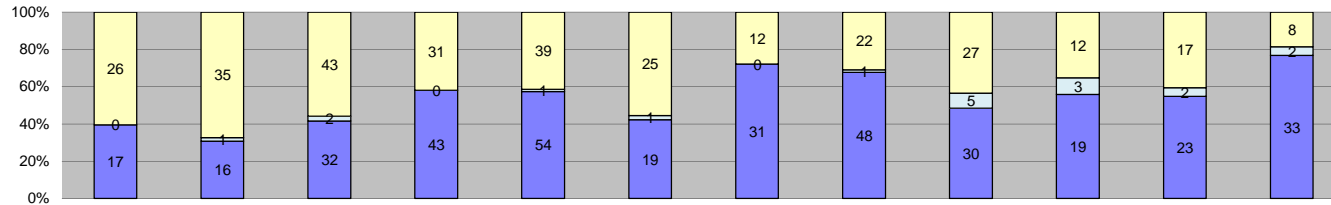
Los Angeles County MTA Gold Line
 Approach Summary Report
 Location 4077: EB to NB 3rd @ Gage



Events	Jan-13	Feb-13	Mar-13	Apr-13	May-13	Jun-13	Jul-13	Aug-13	Sep-13	Oct-13	Nov-13	Dec-13	Year to Date Monthly Average		2012 Monthly Average	
	Quantity	Quantity	Quantity	Quantity	Quantity	Quantity	Quantity	Quantity	Quantity	Quantity	Quantity	Quantity	Quantity	%	%	%
Non-Violations	109	106	117	141	158	94	135	145	156	142	127	107	128	84%	139	84%
Violations	27	22	31	26	32	16	26	25	20	16	21	22	24	16%	26	16%
Total:	136	128	148	167	190	110	161	170	176	158	148	129	152	100%	165	100%
Violations																
Uncontrollable Non-Issued	11	15	18	21	23	7	22	21	16	12	11	12	16	61%	20	74%
Controllable Non-Issued	9	0	6	0	0	0	0	2	2	0	1	4	4	16%	1	4%
Citations	7	7	7	5	9	9	4	2	2	4	9	6	6	23%	6	22%
Total:	27	22	31	26	32	16	26	25	20	16	21	22	26	100%	27	100%
Non-Violations																
Rear Axle Violation	0	0	0	0	0	1	0	0	0	0	0	0	1	1%	0	0%
Emergency Vehicle	1	1	1	1	1	4	3	2	1	1	1	1	2	1%	1	1%
Right Turn	0	0	0	0	0	0	0	0	0	0	0	0	0	0%	0	0%
No Violation Occurred	108	105	116	140	157	89	132	143	155	141	126	106	127	98%	138	99%
Total:	109	106	117	141	158	94	135	145	156	142	127	107	129	100%	140	100%
Uncontrollable Non-Issued Violations																
No Plate	2	0	1	1	3	1	3	2	0	2	1	3	2	9%	2	7%
Out of State Plate	0	0	1	0	0	0	0	2	0	1	0	0	1	7%	1	4%
Glare on Plate	0	0	0	0	0	0	0	0	0	0	0	0	0	0%	1	4%
Illegible Plate	1	0	2	1	4	1	3	3	2	0	1	2	2	10%	3	10%
Plate Obstructed	0	1	1	0	0	0	0	0	1	0	0	0	1	5%	2	6%
Windshield Glare	0	2	2	3	5	0	2	2	1	1	1	1	2	10%	2	6%
Driver Obstructed	3	4	3	7	1	1	3	5	1	2	1	3	3	14%	3	10%
Car Obstructed	0	0	0	0	0	0	0	0	0	1	0	0	1	5%	1	5%
No DMV Match Found	3	4	5	4	4	2	5	2	1	3	3	2	3	16%	5	17%
LASD Expired	0	0	0	1	0	0	0	0	0	0	0	0	1	5%	1	5%
LASD Return	2	4	3	4	6	2	6	5	10	2	4	1	4	20%	7	26%
Other	0	0	0	0	0	0	0	0	0	0	0	0	0	0%	0	0%
Total:	11	15	18	21	23	7	22	21	16	12	11	12	20	100%	26	100%
Controllable Non-Issued Violations																
Framing of Plate	0	0	0	0	0	0	0	0	0	0	0	0	0	0%	0	0%
Focus / Clarity of Plate	0	0	0	0	0	0	0	0	0	0	0	0	0	0%	0	0%
Dark Interior	0	0	0	0	0	0	0	0	0	0	1	4	3	24%	1	50%
Framing of Driver	0	0	0	0	0	0	0	0	0	0	0	0	0	0%	0	0%
Focus / Clarity of Driver	0	0	0	0	0	0	0	0	0	0	0	0	0	0%	0	0%
Framing of Car	0	0	0	0	0	0	0	0	0	0	0	0	0	0%	0	0%
Data/Operator Error	0	0	0	0	0	0	0	0	0	0	0	0	0	0%	0	0%
Exposure	0	0	6	0	0	0	0	2	1	0	0	0	3	29%	1	50%
Equipment Malfunction	9	0	0	0	0	0	0	0	1	0	0	0	5	48%	0	0%
ACS Expired	0	0	0	0	0	0	0	0	0	0	0	0	0	0%	0	0%
Total:	9	0	6	0	0	0	0	2	2	0	1	4	11	100%	2	100%
Summary Metrics																
Daily Average Vehicle Passes	914	897	999	1,054	1,085	1,105	995	928	1,041	930	995	804	Year to Date Monthly Average		2012 Monthly Average	
Average Issued Speed	19	18	20	21	18	20	20	18	19	21	19	20	979		886	
Average Issued Red Seconds	0.4	28.2	2.7	0.7	15.7	0.6	36.4	4.6	1.3	0.3	20.1	0.6	9		12.5	
Citation / Violation Issuance Rate	26%	32%	23%	19%	28%	56%	15%	8%	10%	25%	43%	27%	26%		24%	
Controllable Issuance Rate	44%	100%	54%	100%	100%	100%	100%	50%	50%	100%	90%	60%	79%		97%	



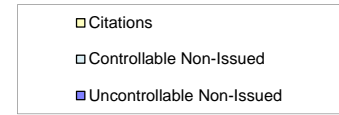
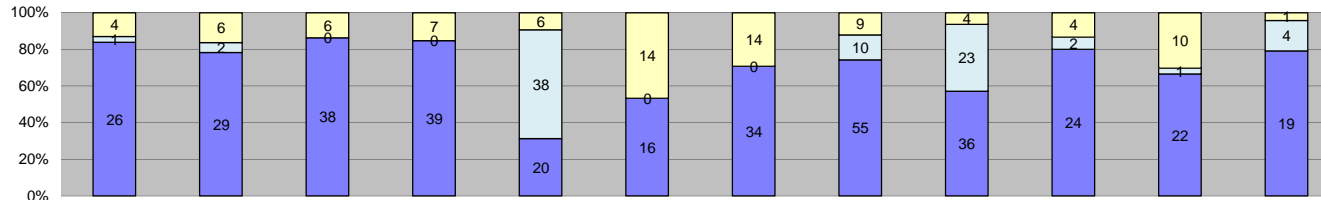
Los Angeles County MTA Gold Line
 Approach Summary Report
 Location 4079: WB to SB 3rd @ Gage



Events	Jan-13	Feb-13	Mar-13	Apr-13	May-13	Jun-13	Jul-13	Aug-13	Sep-13	Oct-13	Nov-13	Dec-13	Year to Date Monthly Average		2012 Monthly Average		
	Quantity	Quantity	Quantity	Quantity	Quantity	Quantity	Quantity	Quantity	Quantity	Quantity	Quantity	Quantity	Quantity	%	%	%	
Non-Violations	234	207	188	257	312	144	243	301	256	274	227	187	236	81%	237	77%	
Violations	43	52	77	74	94	45	43	71	62	34	42	43	57	19%	71	23%	
Total:	277	259	265	331	406	189	286	372	318	308	269	230	293	100%	309	100%	
Violations																	
Uncontrollable Non-Issued	17	16	32	43	54	19	31	48	30	19	23	33	30	53%	45	62%	
Controllable Non-Issued	0	1	2	0	1	1	0	1	5	3	2	2	2	3%	6	8%	
Citations	26	35	43	31	39	25	12	22	27	12	17	8	25	43%	22	30%	
Total:	43	52	77	74	94	45	43	71	62	34	42	43	57	100%	72	100%	
Non-Violations																	
Rear Axle Violation	0	1	0	0	3	0	0	0	0	1	0	0	2	1%	2	1%	
Emergency Vehicle	13	5	7	5	2	5	8	13	11	8	4	4	7	3%	7	3%	
Right Turn	0	0	0	0	0	0	0	0	0	0	0	0	0	0%	0	0%	
No Violation Occurred	221	201	181	252	307	139	235	288	245	265	223	183	228	96%	230	96%	
Total:	234	207	188	257	312	144	243	301	256	274	227	187	237	100%	238	100%	
Uncontrollable Non-Issued Violations																	
No Plate	8	2	4	10	10	2	5	13	6	2	8	4	6	16%	7	13%	
Out of State Plate	0	0	1	0	0	0	0	0	0	0	1	0	1	3%	2	3%	
Glare on Plate	0	1	0	0	0	0	0	0	0	0	0	0	1	3%	4	7%	
Illegible Plate	2	2	8	6	9	2	3	7	2	4	2	4	4	11%	9	15%	
Plate Obstructed	0	0	0	2	2	0	1	0	0	0	1	0	2	4%	2	3%	
Windshield Glare	0	0	1	0	4	3	4	1	1	0	1	0	2	5%	3	5%	
Driver Obstructed	0	2	5	3	8	0	0	8	2	0	0	2	4	11%	2	4%	
Car Obstructed	1	0	0	0	1	0	2	0	1	0	0	0	1	3%	3	5%	
No DMV Match Found	4	3	7	16	10	6	5	14	6	9	6	11	8	21%	6	11%	
LASD Expired	0	0	0	2	0	0	0	0	0	0	0	4	3	8%	8	14%	
LASD Return	2	6	6	4	10	6	11	5	12	4	4	8	7	17%	13	22%	
Other	0	0	0	0	0	0	0	0	0	0	0	0	0	0%	0	0%	
Total:	17	16	32	43	54	19	31	48	30	19	23	33	39	100%	59	100%	
Controllable Non-Issued Violations																	
Framing of Plate	0	0	0	0	0	0	0	0	0	0	1	0	1	19%	1	4%	
Focus / Clarity of Plate	0	0	0	0	0	0	0	0	0	1	0	0	1	19%	0	0%	
Dark Interior	0	0	0	0	0	0	0	0	1	0	0	1	1	19%	0	0%	
Framing of Driver	0	0	1	0	0	1	0	0	2	1	0	0	1	23%	2	7%	
Focus / Clarity of Driver	0	0	0	0	0	0	0	0	0	0	0	0	0	0%	0	0%	
Framing of Car	0	0	0	0	0	0	0	0	0	0	0	0	0	0%	1	4%	
Data/Operator Error	0	0	0	0	0	0	0	0	0	0	0	0	0	0%	12	49%	
Exposure	0	1	1	0	1	0	0	1	2	1	1	1	1	21%	4	14%	
Equipment Malfunction	0	0	0	0	0	0	0	0	0	0	0	0	0	0%	6	22%	
ACS Expired	0	0	0	0	0	0	0	0	0	0	0	0	0	0%	0	0%	
Total:	0	1	2	0	1	1	0	1	5	3	2	2	5	100%	25	100%	
Summary Metrics																	
Daily Average Vehicle Passes	1,248	1,142	1,577	1,420	1,550	1,662	1,675	1,596	1,752	1,671	1,520	1,660	Year to Date Monthly Average		2012 Monthly Average		
Average Issued Speed	19	20	19	18	19	20	20	19	19	19	19	19	1,540		1,385		
Average Issued Red Seconds	1.5	3.8	3.1	3.9	6.6	9.2	8.9	9.5	9.6	11.0	21.1	13.1	8		9.2		
Citation / Violation Issuance Rate	60%	67%	56%	42%	41%	56%	28%	31%	44%	35%	40%	19%	43%		29%		
Controllable Issuance Rate	100%	97%	96%	100%	98%	96%	100%	96%	84%	80%	89%	80%	93%		81%		



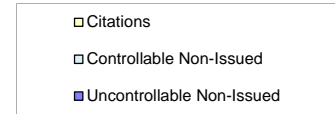
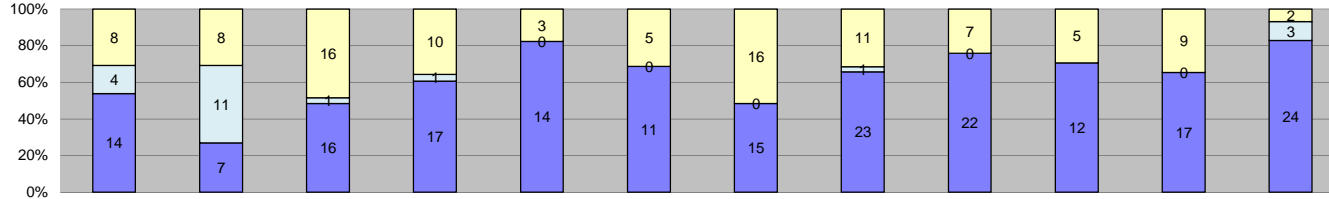
Los Angeles County MTA Gold Line
 Approach Summary Report
 Location 4083: EB to NB 3rd @ Rowan



Events	Jan-13	Feb-13	Mar-13	Apr-13	May-13	Jun-13	Jul-13	Aug-13	Sep-13	Oct-13	Nov-13	Dec-13	Year to Date Monthly Average		2012 Monthly Average	
													Quantity	%	Quantity	%
Non-Violations	467	472	463	459	463	177	340	431	381	457	518	549	433	91%	530	89%
Violations	31	37	44	46	64	30	48	74	63	30	33	24	47	9%	64	11%
Total:	498	509	507	505	527	207	388	505	444	487	551	573	475	100%	594	100%
Violations																
Uncontrollable Non-Issued	26	29	38	39	20	16	34	55	36	24	22	19	30	63%	51	75%
Controllable Non-Issued	1	2	0	0	38	0	0	10	23	2	1	4	10	22%	8	11%
Citations	4	6	6	7	6	14	14	9	4	4	10	1	7	15%	9	14%
Total:	31	37	44	46	64	30	48	74	63	30	33	24	47	100%	68	100%
Non-Violations																
Rear Axle Violation	1	0	0	0	0	0	0	0	0	0	0	0	1	0%	2	0%
Emergency Vehicle	1	5	3	2	3	1	0	3	2	1	0	1	2	1%	3	1%
Right Turn	0	0	0	0	0	0	0	0	0	0	0	0	0	0%	0	0%
No Violation Occurred	465	467	460	457	460	176	340	428	379	456	518	548	430	99%	526	99%
Total:	467	472	463	459	463	177	340	431	381	457	518	549	433	100%	532	100%
Uncontrollable Non-Issued Violations																
No Plate	1	2	2	4	2	4	1	4	3	1	1	0	2	6%	4	6%
Out of State Plate	0	0	0	0	0	0	0	1	1	0	1	1	1	3%	1	2%
Glare on Plate	0	0	0	0	0	0	0	0	1	0	0	0	1	3%	1	2%
Illegible Plate	9	9	13	12	5	6	13	29	11	6	7	2	10	28%	16	26%
Plate Obstructed	0	0	0	0	1	0	0	0	0	2	1	0	1	4%	2	3%
Windshield Glare	0	4	1	3	3	1	2	2	1	3	2	7	3	7%	3	5%
Driver Obstructed	5	7	5	7	2	0	2	10	3	3	2	2	4	12%	3	5%
Car Obstructed	1	2	0	0	0	0	0	2	0	0	0	0	2	5%	18	29%
No DMV Match Found	6	1	9	8	2	2	6	4	10	8	6	0	6	16%	5	8%
LASD Expired	0	0	0	1	0	0	0	0	0	0	0	0	1	3%	2	3%
LASD Return	4	4	8	4	5	3	10	3	6	1	2	7	5	13%	6	10%
Other	0	0	0	0	0	0	0	0	0	0	0	0	0	0%	0	0%
Total:	26	29	38	39	20	16	34	55	36	24	22	19	36	100%	62	100%
Controllable Non-Issued Violations																
Framing of Plate	0	0	0	0	0	0	0	0	0	0	0	0	0	0%	0	0%
Focus / Clarity of Plate	0	0	0	0	0	0	0	0	0	0	0	0	0	0%	1	6%
Dark Interior	0	1	0	0	1	0	0	1	0	0	1	3	1	5%	4	23%
Framing of Driver	0	0	0	0	0	0	0	0	0	0	0	0	0	0%	0	0%
Focus / Clarity of Driver	0	0	0	0	0	0	0	0	0	0	0	0	0	0%	0	0%
Framing of Car	0	0	0	0	0	0	0	0	0	0	0	0	0	0%	0	0%
Data/Operator Error	1	0	0	0	0	0	0	0	8	2	0	0	4	14%	0	0%
Exposure	0	1	0	0	1	0	0	1	0	0	0	1	1	4%	0	0%
Equipment Malfunction	0	0	0	0	36	0	0	8	15	0	0	0	20	76%	11	70%
ACS Expired	0	0	0	0	0	0	0	0	0	0	0	0	0	0%	0	0%
Total:	1	2	0	0	38	0	0	10	23	2	1	4	26	100%	16	100%
Summary Metrics																
Daily Average Vehicle Passes	909	708	960	538	618	651	671	751	585	881	766	618	Year to Date Monthly Average		2012 Monthly Average	
Average Issued Speed	19	17	21	18	20	21	19	18	20	17	18	16	721		1,228	
Average Issued Red Seconds	12.9	10.9	0.4	0.6	4.5	12.9	10.4	20.5	5.7	9.6	3.2	0.3	8		9.0	
Citation / Violation Issuance Rate	13%	16%	14%	15%	9%	47%	29%	12%	6%	13%	30%	4%	17%		16%	
Controllable Issuance Rate	80%	75%	100%	100%	14%	100%	100%	47%	15%	67%	91%	20%	67%		80%	



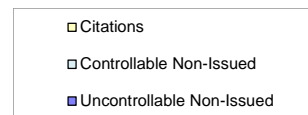
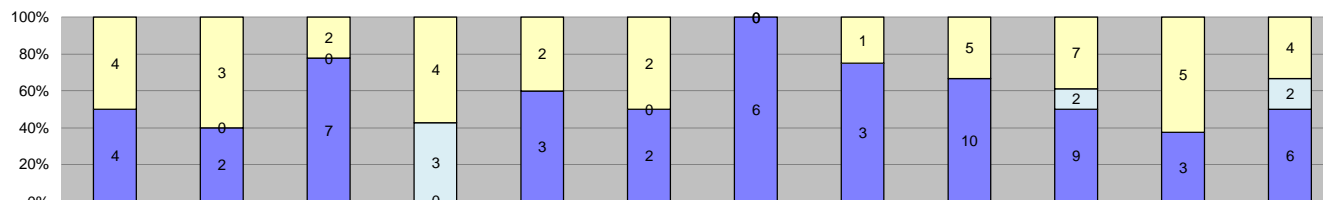
Los Angeles County MTA Gold Line
 Approach Summary Report
 Location 4085: WB to SB 3rd @ Rowan



Events	Jan-13	Feb-13	Mar-13	Apr-13	May-13	Jun-13	Jul-13	Aug-13	Sep-13	Oct-13	Nov-13	Dec-13	Year to Date Monthly Average		2012 Monthly Average	
													Quantity	%	Quantity	%
Non-Violations	26	21	14	21	13	14	25	15	24	15	17	13	18	41%	28	44%
Violations	26	26	33	28	17	16	31	35	29	17	26	29	26	59%	36	56%
Total:	52	47	47	49	30	30	56	50	53	32	43	42	44	100%	64	100%
Violations																
Uncontrollable Non-Issued	14	7	16	17	14	11	15	23	22	12	17	17	16	57%	20	54%
Controllable Non-Issued	4	11	1	1	0	0	0	1	0	0	0	3	4	13%	3	7%
Citations	8	8	16	10	3	5	16	11	7	5	9	2	8	30%	15	39%
Total:	26	26	33	28	17	16	31	35	29	17	26	29	28	100%	37	100%
Non-Violations																
Rear Axle Violation	0	1	0	0	0	0	1	0	0	0	0	0	1	5%	0	0%
Emergency Vehicle	12	9	7	10	8	6	11	5	7	4	3	5	7	38%	10	35%
Right Turn	0	0	0	0	0	0	0	0	0	0	0	0	0	0%	0	0%
No Violation Occurred	14	11	7	11	5	8	13	10	17	11	14	8	11	57%	18	65%
Total:	26	21	14	21	13	14	25	15	24	15	17	13	19	100%	28	100%
Uncontrollable Non-Issued Violations																
No Plate	5	1	0	3	1	1	2	4	1	1	3	2	2	10%	3	11%
Out of State Plate	0	0	0	0	0	0	0	1	0	0	0	0	1	5%	1	4%
Glare on Plate	0	0	0	0	0	0	0	0	0	0	0	0	0	0%	1	4%
Illegible Plate	1	1	2	0	0	0	0	1	0	0	2	2	2	7%	2	6%
Plate Obstructed	0	1	0	1	0	0	0	0	0	0	1	0	1	5%	1	4%
Windshield Glare	1	0	1	0	2	0	0	2	1	0	0	0	1	6%	1	4%
Driver Obstructed	1	0	3	0	0	1	0	1	0	1	1	3	2	7%	2	8%
Car Obstructed	0	0	0	0	0	0	0	0	0	0	0	0	0	0%	1	4%
No DMV Match Found	3	2	8	8	7	8	7	9	9	5	8	7	7	31%	7	27%
LASD Expired	0	0	0	0	0	0	0	0	0	0	0	2	2	9%	2	8%
LASD Return	3	2	2	5	4	1	6	5	11	5	2	8	5	21%	6	22%
Other	0	0	0	0	0	0	0	0	0	0	0	0	0	0%	0	0%
Total:	14	7	16	17	14	11	15	23	22	12	17	24	22	100%	26	100%
Controllable Non-Issued Violations																
Framing of Plate	0	0	0	0	0	0	0	0	0	0	0	0	0	0%	0	0%
Focus / Clarity of Plate	0	0	0	0	0	0	0	0	0	0	0	0	0	0%	0	0%
Dark Interior	0	0	0	1	0	0	0	1	0	0	0	0	1	10%	1	16%
Framing of Driver	0	0	0	0	0	0	0	0	0	0	0	0	0	0%	0	0%
Focus / Clarity of Driver	0	0	0	0	0	0	0	0	0	0	0	0	0	0%	0	0%
Framing of Car	0	0	0	0	0	0	0	0	0	0	0	0	0	0%	0	0%
Data/Operator Error	4	10	0	0	0	0	0	0	0	0	0	0	7	72%	0	0%
Exposure	0	1	1	0	0	0	0	0	0	0	0	3	2	17%	1	21%
Equipment Malfunction	0	0	0	0	0	0	0	0	0	0	0	0	0	0%	4	63%
ACS Expired	0	0	0	0	0	0	0	0	0	0	0	0	0	0%	0	0%
Total:	4	11	1	1	0	0	0	1	0	0	0	3	10	100%	6	100%
Summary Metrics																
Daily Average Vehicle Passes	1,479	1,156	1,778	711	1,051	1,188	1,299	1,119	1,385	1,353	1,172	1,033	Year to Date Monthly Average		2012 Monthly Average	
Average Issued Speed	16	17	17	17	17	17	17	17	16	16	17	16	1,227		1,724	
Average Issued Red Seconds	19.1	27.7	25.2	7.1	0.4	17.6	21.6	9.6	14.4	6.9	16.4	0.2	14		25.8	
Citation / Violation Issuance Rate	31%	31%	48%	36%	18%	31%	52%	31%	24%	29%	35%	7%	31%		41%	
Controllable Issuance Rate	67%	42%	94%	91%	100%	100%	100%	92%	100%	100%	100%	40%	85%		92%	



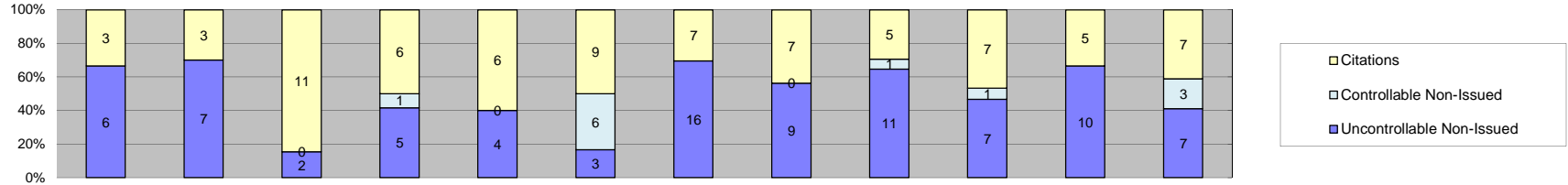
Los Angeles County MTA Gold Line
 Approach Summary Report
 Location 4087: EB to NB 1st @ Lorena



Events	Jan-13	Feb-13	Mar-13	Apr-13	May-13	Jun-13	Jul-13	Aug-13	Sep-13	Oct-13	Nov-13	Dec-13	Year to Date Monthly Average		2012 Monthly Average	
													Quantity	%	Quantity	%
Non-Violations	98	222	187	174	189	88	127	185	182	235	117	177	165	95%	129	91%
Violations	8	5	9	7	5	4	6	4	15	18	8	12	8	5%	12	9%
Total:	106	227	196	181	194	92	133	189	197	253	125	189	174	100%	141	100%
Violations																
Uncontrollable Non-Issued	4	2	7	0	3	2	6	3	10	9	3	6	5	46%	6	44%
Controllable Non-Issued	0	0	0	3	0	0	0	0	0	2	0	2	2	21%	1	8%
Citations	4	3	2	4	2	2	0	1	5	7	5	4	4	33%	6	48%
Total:	8	5	9	7	5	4	6	4	15	18	8	12	11	100%	13	100%
Non-Violations																
Rear Axle Violation	0	0	0	0	0	0	0	0	0	0	0	0	0	0%	0	0%
Emergency Vehicle	1	1	0	0	0	0	1	0	2	1	0	1	1	1%	2	1%
Right Turn	0	0	0	0	0	0	0	0	0	0	0	0	0	0%	0	0%
No Violation Occurred	97	221	187	174	189	88	126	185	180	234	117	176	165	99%	127	99%
Total:	98	222	187	174	189	88	127	185	182	235	117	177	166	100%	129	100%
Uncontrollable Non-Issued Violations																
No Plate	0	0	1	0	0	0	0	0	0	1	0	0	1	8%	2	11%
Out of State Plate	0	0	0	0	0	0	0	0	1	0	0	0	1	8%	2	14%
Glare on Plate	0	0	0	0	0	0	0	0	0	0	0	0	0	0%	0	0%
Illegible Plate	1	0	0	0	0	0	1	1	1	1	0	0	1	8%	1	7%
Plate Obstructed	0	0	0	0	0	0	0	0	0	1	0	0	1	8%	1	7%
Windshield Glare	0	0	1	0	0	0	2	0	2	0	0	0	2	14%	1	7%
Driver Obstructed	0	0	0	0	0	0	0	1	2	0	0	5	3	22%	1	7%
Car Obstructed	0	0	0	0	0	0	0	0	0	0	0	0	0	0%	1	9%
No DMV Match Found	3	1	3	0	2	1	0	1	1	4	3	1	2	16%	3	19%
LASD Expired	0	0	0	0	0	0	0	0	0	0	0	0	0	0%	2	10%
LASD Return	0	1	2	0	1	1	3	0	3	2	0	0	2	15%	1	10%
Other	0	0	0	0	0	0	0	0	0	0	0	0	0	0%	0	0%
Total:	4	2	7	0	3	2	6	3	10	9	3	6	12	100%	15	100%
Controllable Non-Issued Violations																
Framing of Plate	0	0	0	0	0	0	0	0	0	0	0	0	0	0%	1	50%
Focus / Clarity of Plate	0	0	0	0	0	0	0	0	0	0	0	0	0	0%	0	0%
Dark Interior	0	0	0	0	0	0	0	0	0	0	0	0	0	0%	1	50%
Framing of Driver	0	0	0	0	0	0	0	0	0	0	0	0	0	0%	0	0%
Focus / Clarity of Driver	0	0	0	0	0	0	0	0	0	0	0	0	0	0%	0	0%
Framing of Car	0	0	0	0	0	0	0	0	0	0	0	0	0	0%	0	0%
Data/Operator Error	0	0	0	0	0	0	0	0	0	0	0	0	0	0%	0	0%
Exposure	0	0	0	0	0	0	0	0	0	2	0	2	2	40%	0	0%
Equipment Malfunction	0	0	0	3	0	0	0	0	0	0	0	0	3	60%	0	0%
ACS Expired	0	0	0	0	0	0	0	0	0	0	0	0	0	0%	0	0%
Total:	0	0	0	3	0	0	0	0	0	2	0	2	5	100%	2	100%
Summary Metrics																
Daily Average Vehicle Passes	556	495	669	630	719	785	661	718	855	752	930	848	Year to Date Monthly Average		2012 Monthly Average	
Average Issued Speed	18	18	20	23	27	22	0	16	19	22	18	21	718		1,010	
Average Issued Red Seconds	21.0	0.6	1.3	14.7	0.8	45.5	0	0.1	18.9	8.1	40.2	0.4	14		23.1	
Citation / Violation Issuance Rate	50%	60%	22%	57%	40%	50%	0%	25%	33%	39%	63%	33%	43%		50%	
Controllable Issuance Rate	100%	100%	100%	57%	100%	100%	0%	100%	100%	78%	100%	67%	91%		96%	



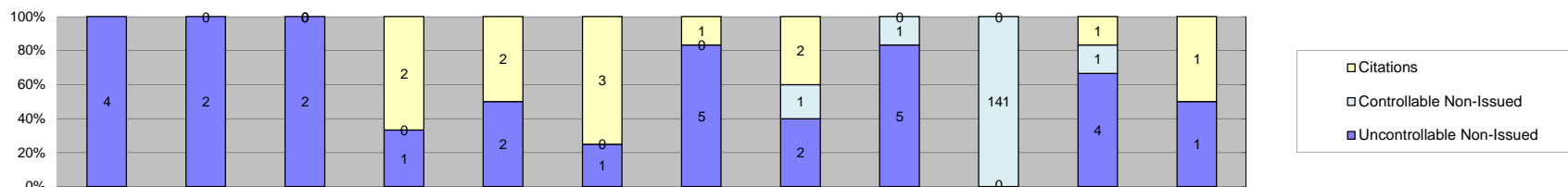
Los Angeles County MTA Gold Line
 Approach Summary Report
 Location 4089: WB to SB 1st @ Lorena



Events	Jan-13	Feb-13	Mar-13	Apr-13	May-13	Jun-13	Jul-13	Aug-13	Sep-13	Oct-13	Nov-13	Dec-13	Year to Date Monthly Average		2012 Monthly Average	
	Quantity	Quantity	Quantity	Quantity	Quantity	Quantity	Quantity	Quantity	Quantity	Quantity	Quantity	Quantity	Quantity	%	Quantity	%
Non-Violations	95	92	89	75	90	63	85	82	98	74	83	89	85	85%	89	88%
Violations	9	10	13	12	10	18	23	16	17	15	15	17	15	15%	12	12%
Total:	104	102	102	87	100	81	108	98	115	89	98	106	99	100%	100	100%
Violations																
Uncontrollable Non-Issued	6	7	2	5	4	3	16	9	11	7	10	7	7	45%	7	52%
Controllable Non-Issued	0	0	0	1	0	6	0	0	1	1	0	3	2	15%	1	8%
Citations	3	3	11	6	6	9	7	7	5	7	5	7	6	40%	5	40%
Total:	9	10	13	12	10	18	23	16	17	15	15	17	16	100%	13	100%
Non-Violations																
Rear Axle Violation	0	0	0	0	0	0	0	0	0	0	0	0	0	0%	0	0%
Emergency Vehicle	2	0	0	2	1	0	0	1	4	1	1	2	2	2%	2	2%
Right Turn	0	0	0	0	0	0	0	0	0	0	0	0	0	0%	0	0%
No Violation Occurred	93	92	89	73	89	63	85	81	94	73	82	87	83	98%	88	98%
Total:	95	92	89	75	90	63	85	82	98	74	83	89	85	100%	89	100%
Uncontrollable Non-Issued Violations																
No Plate	2	1	0	1	1	0	4	1	0	3	0	0	2	12%	2	11%
Out of State Plate	0	0	0	0	0	0	0	0	1	0	0	1	1	7%	1	6%
Glare on Plate	0	0	0	0	0	0	0	0	0	0	0	0	0	0%	1	6%
Illegible Plate	2	2	0	2	0	1	3	1	0	1	2	1	2	11%	2	12%
Plate Obstructed	0	0	1	0	0	0	0	0	0	0	0	0	1	7%	1	6%
Windshield Glare	0	0	0	0	0	0	1	0	0	0	0	0	1	7%	1	6%
Driver Obstructed	0	0	0	1	0	0	0	2	2	0	0	0	2	11%	1	6%
Car Obstructed	0	0	0	1	0	0	0	0	0	0	1	0	1	7%	2	13%
No DMV Match Found	2	2	1	0	2	1	5	4	5	1	5	1	3	17%	2	12%
LASD Expired	0	0	0	0	0	0	1	0	0	0	0	2	2	10%	1	8%
LASD Return	0	2	0	0	1	1	2	1	3	2	2	2	2	12%	2	13%
Other	0	0	0	0	0	0	0	0	0	0	0	0	0	0%	0	0%
Total:	6	7	2	5	4	3	16	9	11	7	10	7	15	100%	16	100%
Controllable Non-Issued Violations																
Framing of Plate	0	0	0	0	0	0	0	0	0	1	0	0	1	11%	0	0%
Focus / Clarity of Plate	0	0	0	0	0	0	0	0	0	0	0	0	0	0%	0	0%
Dark Interior	0	0	0	0	0	0	0	0	1	0	0	2	2	16%	0	0%
Framing of Driver	0	0	0	0	0	0	0	0	0	0	0	0	0	0%	0	0%
Focus / Clarity of Driver	0	0	0	0	0	0	0	0	0	0	0	0	0	0%	0	0%
Framing of Car	0	0	0	0	0	0	0	0	0	0	0	0	0	0%	1	100%
Data/Operator Error	0	0	0	0	0	6	0	0	0	0	0	0	6	63%	0	0%
Exposure	0	0	0	1	0	0	0	0	0	0	0	1	1	11%	0	0%
Equipment Malfunction	0	0	0	0	0	0	0	0	0	0	0	0	0	0%	0	0%
ACS Expired	0	0	0	0	0	0	0	0	0	0	0	0	0	0%	0	0%
Total:	0	0	0	1	0	6	0	0	1	1	0	3	10	100%	1	100%
Summary Metrics																
Daily Average Vehicle Passes	794	525	736	392	662	752	817	965	885	672	752	860	Year to Date Monthly Average		2012 Monthly Average	
Average Issued Speed	21	22	20	21	20	20	20	22	21	21	18	20	734		686	
Average Issued Red Seconds	33.7	0.3	8.6	0.6	0.4	22.5	18.5	28.8	20.5	20.7	20.6	14.6	16		24.6	
Citation / Violation Issuance Rate	33%	30%	85%	50%	60%	50%	30%	44%	29%	47%	33%	41%	44%		44%	
Controllable Issuance Rate	100%	100%	100%	86%	100%	60%	100%	100%	83%	88%	100%	70%	91%		99%	



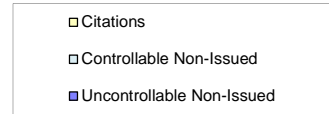
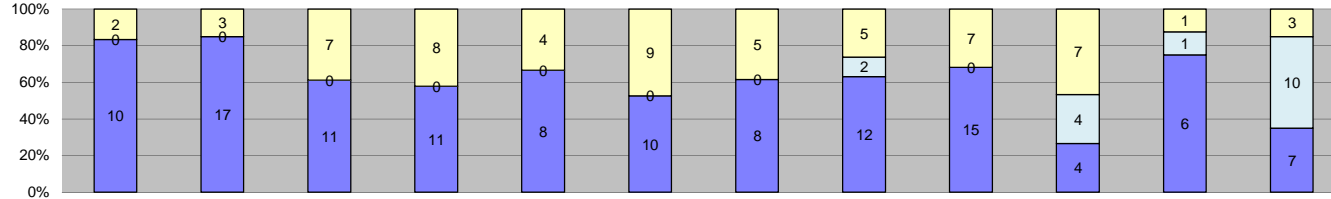
Los Angeles County MTA Gold Line Approach Summary Report Location 4097: EB to NB 1st @Clarence



Events	2013												Year to Date Monthly Average		2012 Monthly Average	
	Jan-13	Feb-13	Mar-13	Apr-13	May-13	Jun-13	Jul-13	Aug-13	Sep-13	Oct-13	Nov-13	Dec-13	Quantity	%	Quantity	%
Non-Violations	434	422	440	549	479	337	414	528	548	487	447	538	469	97%	442	98%
Violations	4	2	2	3	4	4	6	5	6	141	6	2	15	3%	8	2%
Total:	438	424	442	552	483	341	420	533	554	628	453	540	484	100%	449	100%
Violations																
Uncontrollable Non-Issued	4	2	2	1	2	1	5	2	5	0	4	1	3	7%	6	49%
Controllable Non-Issued	0	0	0	0	0	0	0	1	1	141	1	0	36	89%	4	31%
Citations	0	0	0	2	2	3	1	2	0	0	1	1	2	4%	2	20%
Total:	4	2	2	3	4	4	6	5	6	141	6	2	40	100%	11	100%
Non-Violations																
Rear Axle Violation	1	0	0	0	0	0	0	0	0	0	0	0	1	0%	0	0%
Emergency Vehicle	5	6	3	2	2	1	3	1	1	3	1	2	3	1%	4	1%
Right Turn	0	0	0	0	0	0	0	0	0	0	0	0	0	0%	0	0%
No Violation Occurred	428	416	437	547	477	336	411	527	547	484	446	536	466	99%	438	99%
Total:	434	422	440	549	479	337	414	528	548	487	447	538	470	100%	442	100%
Uncontrollable Non-Issued Violations																
No Plate	1	0	1	0	0	0	0	0	1	0	0	1	1	10%	1	8%
Out of State Plate	0	1	0	0	0	0	0	0	1	0	0	0	1	10%	1	7%
Glare on Plate	0	0	0	0	0	0	0	0	0	0	0	0	0	0%	1	7%
Illegible Plate	0	0	0	0	1	0	1	0	0	0	1	0	1	10%	2	10%
Plate Obstructed	0	0	0	0	0	1	0	0	0	0	0	0	1	10%	1	7%
Windshield Glare	1	0	1	0	0	0	0	0	0	0	0	0	1	10%	1	7%
Driver Obstructed	0	0	0	1	0	0	1	1	0	0	1	0	1	10%	1	9%
Car Obstructed	0	0	0	0	0	0	2	0	0	0	0	0	2	19%	4	25%
No DMV Match Found	0	0	0	0	1	0	1	0	1	0	1	0	1	10%	1	7%
LASD Expired	0	0	0	0	0	0	0	0	0	0	0	0	0	0%	1	7%
LASD Return	2	1	0	0	0	0	0	1	2	0	1	0	1	13%	1	7%
Other	0	0	0	0	0	0	0	0	0	0	0	0	0	0%	0	0%
Total:	4	2	2	1	2	1	5	2	5	0	4	1	10	100%	15	100%
Controllable Non-Issued Violations																
Framing of Plate	0	0	0	0	0	0	0	0	0	0	0	0	0	0%	0	0%
Focus / Clarity of Plate	0	0	0	0	0	0	0	0	0	0	0	0	0	0%	0	0%
Dark Interior	0	0	0	0	0	0	0	0	0	0	0	0	0	0%	0	0%
Framing of Driver	0	0	0	0	0	0	0	0	0	0	1	0	1	1%	0	0%
Focus / Clarity of Driver	0	0	0	0	0	0	0	0	0	0	0	0	0	0%	0	0%
Framing of Car	0	0	0	0	0	0	0	0	0	0	0	0	0	0%	0	0%
Data/Operator Error	0	0	0	0	0	0	0	0	0	0	0	0	0	0%	0	0%
Exposure	0	0	0	0	0	0	0	1	1	0	0	0	1	1%	4	100%
Equipment Malfunction	0	0	0	0	0	0	0	0	0	141	0	0	141	99%	0	0%
ACS Expired	0	0	0	0	0	0	0	0	0	0	0	0	0	0%	0	0%
Total:	0	0	0	0	0	0	0	1	1	141	1	0	143	100%	4	100%
Summary Metrics																
Daily Average Vehicle Passes	210	164	225	155	218	242	218	150	298	204	186	205	Year to Date Monthly Average		2012 Monthly Average	
Average Issued Speed	0	0	0	19	18	22	19	23	0	0	17	15	206		206	
Average Issued Red Seconds	0	0	0	99.9	63.8	33.6	99.9	75.9	0	0	0.8	99.9	68		81	
Citation / Violation Issuance Rate	0%	0%	0%	67%	50%	75%	17%	40%	0%	0%	17%	50%	45%		30%	
Controllable Issuance Rate	0%	0%	0%	100%	100%	100%	100%	67%	0%	0%	50%	100%	88%		96%	



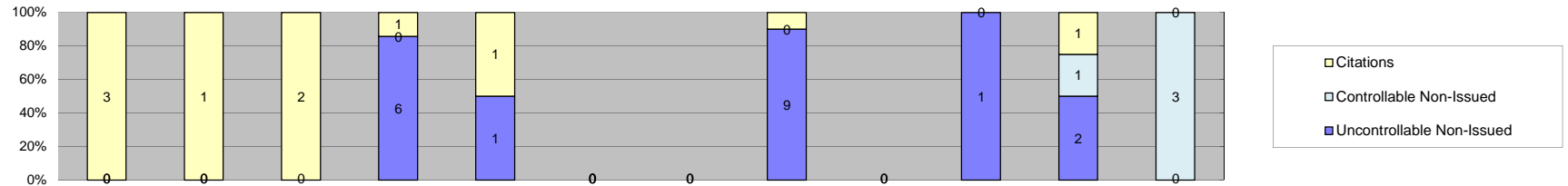
Los Angeles County MTA Gold Line
 Approach Summary Report
 Location 4099: WB to SB 1st @ Clarence



Events	Jan-13	Feb-13	Mar-13	Apr-13	May-13	Jun-13	Jul-13	Aug-13	Sep-13	Oct-13	Nov-13	Dec-13	Year to Date Monthly Average		2012 Monthly Average	
													Quantity	%	Quantity	%
Non-Violations	597	689	758	921	936	579	915	929	840	1,018	803	715	808	98%	751	97%
Violations	12	20	18	19	12	19	13	19	22	15	8	20	16	2%	26	3%
Total:	609	709	776	940	948	598	928	948	862	1,033	811	735	825	100%	777	100%
Violations																
Uncontrollable Non-Issued	10	17	11	11	8	10	8	12	15	4	6	7	10	52%	20	73%
Controllable Non-Issued	0	0	0	0	0	0	0	2	0	4	1	10	4	22%	2	6%
Citations	2	3	7	8	4	9	5	5	7	7	1	3	5	26%	6	22%
Total:	12	20	18	19	12	19	13	19	22	15	8	20	19	100%	27	100%
Non-Violations																
Rear Axle Violation	0	0	0	0	0	0	0	0	0	0	0	0	0	0%	1	0%
Emergency Vehicle	2	6	2	2	4	5	1	5	5	10	1	0	4	0%	5	1%
Right Turn	0	0	0	0	0	0	0	0	0	0	0	0	0	0%	0	0%
No Violation Occurred	595	683	756	919	932	574	914	924	835	1,008	802	715	805	100%	746	99%
Total:	597	689	758	921	936	579	915	929	840	1,018	803	715	809	100%	751	100%
Uncontrollable Non-Issued Violations																
No Plate	1	3	3	5	0	2	1	1	3	1	0	1	2	13%	3	9%
Out of State Plate	2	0	1	0	0	0	0	0	2	0	0	0	2	10%	1	5%
Glare on Plate	0	0	0	0	0	0	0	0	0	0	0	0	0	0%	2	5%
Illegible Plate	1	6	3	3	1	0	4	5	0	0	1	1	3	17%	5	17%
Plate Obstructed	0	0	0	0	0	0	0	0	0	0	0	0	0	0%	0	0%
Windshield Glare	0	0	0	0	0	1	0	0	2	0	2	0	2	10%	2	8%
Driver Obstructed	2	3	2	2	1	1	0	2	3	1	0	0	2	12%	2	7%
Car Obstructed	0	1	0	0	0	0	0	1	0	0	0	0	1	6%	9	31%
No DMV Match Found	3	4	1	1	2	5	2	1	3	2	2	2	2	14%	2	7%
LASD Expired	0	0	0	0	0	0	0	0	0	0	0	1	1	6%	1	5%
LASD Return	1	0	1	0	4	1	1	2	2	0	1	2	2	10%	2	7%
Other	0	0	0	0	0	0	0	0	0	0	0	0	0	0%	0	0%
Total:	10	17	11	11	8	10	8	12	15	4	6	7	16	100%	29	100%
Controllable Non-Issued Violations																
Framing of Plate	0	0	0	0	0	0	0	0	0	0	0	0	0	0%	0	0%
Focus / Clarity of Plate	0	0	0	0	0	0	0	0	0	0	0	0	0	0%	1	25%
Dark Interior	0	0	0	0	0	0	0	0	0	1	1	0	1	10%	1	25%
Framing of Driver	0	0	0	0	0	0	0	0	0	0	0	0	0	0%	1	25%
Focus / Clarity of Driver	0	0	0	0	0	0	0	0	0	0	0	0	0	0%	0	0%
Framing of Car	0	0	0	0	0	0	0	0	0	0	0	0	0	0%	1	25%
Data/Operator Error	0	0	0	0	0	0	0	0	0	1	0	0	1	10%	0	0%
Exposure	0	0	0	0	0	0	0	2	0	0	0	10	6	60%	0	0%
Equipment Malfunction	0	0	0	0	0	0	0	0	0	2	0	0	2	20%	0	0%
ACS Expired	0	0	0	0	0	0	0	0	0	0	0	0	0	0%	0	0%
Total:	0	0	0	0	0	0	0	2	0	4	1	10	10	100%	4	100%
Summary Metrics																
Daily Average Vehicle Passes	509	444	527	456	516	566	661	595	718	663	595	655	Year to Date Monthly Average		2012 Monthly Average	
Average Issued Speed	16	17	19	20	19	20	20	19	19	19	21	15	576		597	
Average Issued Red Seconds	99.9	54.5	43.2	28.8	50.4	37.4	60.1	57.6	43.1	29.0	0.4	73.8	48		52.2	
Citation / Violation Issuance Rate	17%	15%	39%	42%	33%	47%	38%	26%	32%	47%	13%	15%	30%		25%	
Controllable Issuance Rate	100%	100%	100%	100%	100%	100%	100%	71%	100%	64%	50%	23%	84%		89%	



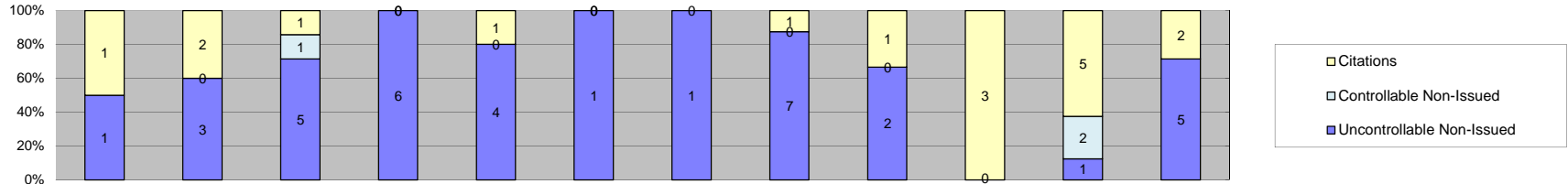
Los Angeles County MTA Gold Line
 Approach Summary Report
 Location 4109: WB to SB 1st @ Utah



Events	Jan-13	Feb-13	Mar-13	Apr-13	May-13	Jun-13	Jul-13	Aug-13	Sep-13	Oct-13	Nov-13	Dec-13	Year to Date Monthly Average		2012 Monthly Average	
													Quantity	%	Quantity	%
Non-Violations	301	194	412	599	877	416	330	350	315	424	358	374	413	99%	300	98%
Violations	3	1	2	7	2	0	0	10	0	1	4	3	4	1%	7	2%
Total:	304	195	414	606	879	416	330	360	315	425	362	377	416	100%	307	100%
Violations																
Uncontrollable Non-Issued	0	0	0	6	1	0	0	9	0	1	2	0	4	53%	4	36%
Controllable Non-Issued	0	0	0	0	0	0	0	0	0	0	1	3	2	28%	6	51%
Citations	3	1	2	1	1	0	0	1	0	0	1	0	1	20%	2	13%
Total:	3	1	2	7	2	0	0	10	0	1	4	3	7	100%	12	100%
Non-Violations																
Rear Axle Violation	0	0	0	0	0	0	0	0	0	0	0	0	0	0%	1	0%
Emergency Vehicle	2	1	1	0	1	1	0	1	2	0	0	2	1	0%	1	0%
Right Turn	0	0	0	0	0	0	0	0	0	0	0	0	0	0%	0	0%
No Violation Occurred	299	193	411	599	876	415	330	349	313	424	358	372	412	100%	300	99%
Total:	301	194	412	599	877	416	330	350	315	424	358	374	413	100%	302	100%
Uncontrollable Non-Issued Violations																
No Plate	0	0	0	2	0	0	0	1	0	0	0	0	2	15%	1	12%
Out of State Plate	0	0	0	0	0	0	0	0	0	0	0	0	0	0%	0	0%
Glare on Plate	0	0	0	0	0	0	0	0	0	0	0	0	0	0%	0	0%
Illegible Plate	0	0	0	1	0	0	0	3	0	0	0	0	2	20%	1	10%
Plate Obstructed	0	0	0	0	0	0	0	0	0	0	0	0	0	0%	0	0%
Windshield Glare	0	0	0	0	0	0	0	0	0	0	0	0	0	0%	0	0%
Driver Obstructed	0	0	0	2	1	0	0	0	0	0	0	0	2	15%	1	10%
Car Obstructed	0	0	0	0	0	0	0	2	0	0	0	0	2	20%	5	50%
No DMV Match Found	0	0	0	1	0	0	0	1	0	0	1	0	1	10%	1	10%
LASD Expired	0	0	0	0	0	0	0	1	0	0	0	0	1	10%	1	10%
LASD Return	0	0	0	0	0	0	0	1	0	1	1	0	1	10%	0	0%
Other	0	0	0	0	0	0	0	0	0	0	0	0	0	0%	0	0%
Total:	0	0	0	6	1	0	0	9	0	1	2	0	10	100%	10	100%
Controllable Non-Issued Violations																
Framing of Plate	0	0	0	0	0	0	0	0	0	0	0	1	1	25%	0	0%
Focus / Clarity of Plate	0	0	0	0	0	0	0	0	0	0	0	0	0	0%	1	5%
Dark Interior	0	0	0	0	0	0	0	0	0	0	1	0	1	25%	0	0%
Framing of Driver	0	0	0	0	0	0	0	0	0	0	0	0	0	0%	0	0%
Focus / Clarity of Driver	0	0	0	0	0	0	0	0	0	0	0	0	0	0%	0	0%
Framing of Car	0	0	0	0	0	0	0	0	0	0	0	0	0	0%	1	5%
Data/Operator Error	0	0	0	0	0	0	0	0	0	0	0	0	0	0%	0	0%
Exposure	0	0	0	0	0	0	0	0	0	0	0	2	2	50%	1	5%
Equipment Malfunction	0	0	0	0	0	0	0	0	0	0	0	0	0	0%	16	84%
ACS Expired	0	0	0	0	0	0	0	0	0	0	0	0	0	0%	0	0%
Total:	0	0	0	0	0	0	0	0	0	0	1	3	4	100%	19	100%
Summary Metrics																
Daily Average Vehicle Passes	71	42	61	50	72	48	42	53	63	42	48	44	Year to Date Monthly Average		2012 Monthly Average	
Average Issued Speed	21	21	18	17	18	0	0	16	0	0	18	0	53		66	
Average Issued Red Seconds	72.9	0.2	92.5	99.9	99.9	0	0	99.9	0	0	99.9	0	81		86	
Citation / Violation Issuance Rate	100%	100%	100%	14%	50%	0%	0%	10%	0%	0%	25%	0%	57%		37%	
Controllable Issuance Rate	100%	100%	100%	100%	100%	0%	0%	100%	0%	0%	50%	0%	93%		90%	



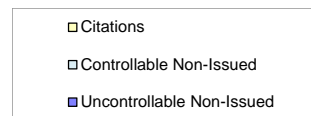
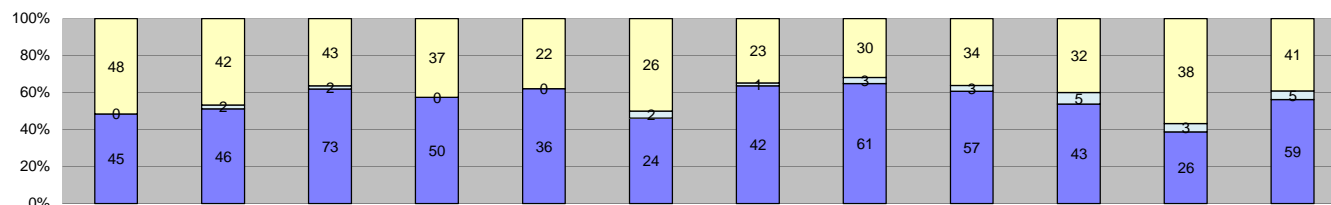
Los Angeles County MTA Gold Line
 Approach Summary Report
 Location 4119: WB to SB 1st @ Anderson



Events	Jan-13	Feb-13	Mar-13	Apr-13	May-13	Jun-13	Jul-13	Aug-13	Sep-13	Oct-13	Nov-13	Dec-13	Year to Date Monthly Average		2012 Monthly Average	
													Quantity	%	Quantity	%
Non-Violations	135	162	157	172	184	106	173	193	193	219	188	223	175	97%	163	96%
Violations	2	5	7	6	5	1	1	8	3	3	8	7	5	3%	7	4%
Total:	137	167	164	178	189	107	174	201	196	222	196	230	180	100%	170	100%
Violations																
Uncontrollable Non-Issued	1	3	5	6	4	1	1	7	2	0	1	5	3	49%	7	76%
Controllable Non-Issued	0	0	1	0	0	0	0	0	0	0	2	0	2	23%	1	11%
Citations	1	2	1	0	1	0	0	1	1	3	5	2	2	28%	1	13%
Total:	2	5	7	6	5	1	1	8	3	3	8	7	7	100%	9	100%
Non-Violations																
Rear Axle Violation	0	0	0	0	0	0	0	0	0	0	0	0	0	0%	1	1%
Emergency Vehicle	1	2	0	0	0	0	0	1	1	2	2	3	2	1%	1	1%
Right Turn	0	0	0	0	0	0	0	0	0	0	0	0	0	0%	0	0%
No Violation Occurred	134	160	157	172	184	106	173	192	192	217	186	220	174	99%	162	99%
Total:	135	162	157	172	184	106	173	193	193	219	188	223	176	100%	164	100%
Uncontrollable Non-Issued Violations																
No Plate	1	0	0	3	2	0	0	0	1	0	0	1	2	17%	2	11%
Out of State Plate	0	0	0	0	0	0	0	0	0	0	0	0	0	0%	1	5%
Glare on Plate	0	0	0	0	0	0	0	0	0	0	0	0	0	0%	0	0%
Illegible Plate	0	1	2	1	1	0	0	4	0	0	0	0	2	19%	1	8%
Plate Obstructed	0	0	0	0	0	0	0	1	0	0	0	0	1	10%	0	0%
Windshield Glare	0	0	1	0	0	1	0	1	0	0	0	0	1	10%	1	5%
Driver Obstructed	0	0	1	1	0	0	0	1	1	0	0	1	1	10%	2	11%
Car Obstructed	0	0	1	0	0	0	0	0	0	0	0	0	1	10%	8	43%
No DMV Match Found	0	1	0	0	0	0	1	0	0	0	0	1	1	10%	1	5%
LASD Expired	0	0	0	0	0	0	0	0	0	0	0	0	0	0%	0	0%
LASD Return	0	1	0	1	1	0	0	0	0	0	1	2	1	13%	2	11%
Other	0	0	0	0	0	0	0	0	0	0	0	0	0	0%	0	0%
Total:	1	3	5	6	4	1	1	7	2	0	1	5	10	100%	18	100%
Controllable Non-Issued Violations																
Framing of Plate	0	0	0	0	0	0	0	0	0	0	0	0	0	0%	0	0%
Focus / Clarity of Plate	0	0	0	0	0	0	0	0	0	0	0	0	0	0%	0	0%
Dark Interior	0	0	1	0	0	0	0	0	0	0	0	0	1	33%	0	0%
Framing of Driver	0	0	0	0	0	0	0	0	0	0	0	0	0	0%	0	0%
Focus / Clarity of Driver	0	0	0	0	0	0	0	0	0	0	0	0	0	0%	0	0%
Framing of Car	0	0	0	0	0	0	0	0	0	0	0	0	0	0%	0	0%
Data/Operator Error	0	0	0	0	0	0	0	0	0	0	0	0	0	0%	0	0%
Exposure	0	0	0	0	0	0	0	0	0	0	2	0	2	67%	1	100%
Equipment Malfunction	0	0	0	0	0	0	0	0	0	0	0	0	0	0%	0	0%
ACS Expired	0	0	0	0	0	0	0	0	0	0	0	0	0	0%	0	0%
Total:	0	0	1	0	0	0	0	0	0	0	2	0	3	100%	1	100%
Summary Metrics																
Daily Average Vehicle Passes	106	81	108	82	89	99	75	66	82	97	89	76	Year to Date Monthly Average		2012 Monthly Average	
Average Issued Speed	19	19	22	0	25	0	0	22	17	19	19	19	88	113		
Average Issued Red Seconds	13.9	99.9	7.6	0	0.6	0	0	99.9	99.9	99.9	99.9	61.9	65	91.4		
Citation / Violation Issuance Rate	50%	40%	14%	0%	20%	0%	0%	13%	33%	100%	63%	29%	40%	35%		
Controllable Issuance Rate	100%	100%	50%	0%	100%	0%	0%	100%	100%	100%	71%	100%	91%	94%		



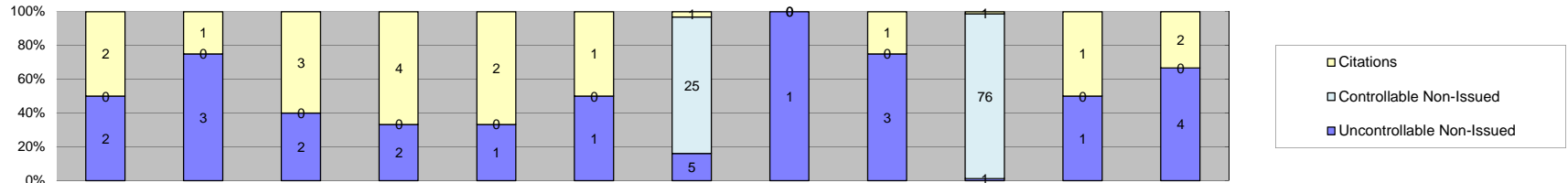
Los Angeles County MTA Gold Line Approach Summary Report Location 4127: EB to NB 1st @ Mission



Events	Jan-13	Feb-13	Mar-13	Apr-13	May-13	Jun-13	Jul-13	Aug-13	Sep-13	Oct-13	Nov-13	Dec-13	Year to Date Monthly Average		2012 Monthly Average	
	Quantity	Quantity	Quantity	Quantity	Quantity	Quantity	Quantity	Quantity	Quantity	Quantity	Quantity	Quantity	Quantity	%	%	%
Non-Violations	982	948	1,268	920	826	558	649	786	864	931	662	966	863	91%	999	92%
Violations	93	90	118	87	58	52	66	94	94	80	67	105	84	9%	90	8%
Total:	1,075	1,038	1,386	1,007	884	610	715	880	958	1,011	729	1,071	947	100%	1,089	100%
Violations																
Uncontrollable Non-Issued	45	46	73	50	36	24	42	61	57	43	26	59	47	55%	53	57%
Controllable Non-Issued	0	2	2	0	0	2	1	3	3	5	3	5	3	3%	8	8%
Citations	48	42	43	37	22	26	23	30	34	32	38	41	35	41%	33	35%
Total:	93	90	118	87	58	52	66	94	94	80	67	105	84	100%	94	100%
Non-Violations																
Rear Axle Violation	0	0	0	1	0	0	0	0	0	0	0	0	1	0%	1	0%
Emergency Vehicle	12	15	14	5	11	11	9	5	14	19	9	15	12	1%	12	1%
Right Turn	0	0	0	0	0	0	0	0	0	0	0	0	0	0%	0	0%
No Violation Occurred	970	933	1,254	914	815	547	640	781	850	912	653	951	852	99%	986	99%
Total:	982	948	1,268	920	826	558	649	786	864	931	662	966	864	100%	1,000	100%
Uncontrollable Non-Issued Violations																
No Plate	14	4	12	5	9	5	8	12	5	4	2	11	8	15%	7	12%
Out of State Plate	2	2	3	2	2	0	0	2	1	3	1	4	2	4%	1	2%
Glare on Plate	0	0	0	0	0	2	1	3	1	0	0	0	2	3%	2	3%
Illegible Plate	11	14	31	10	12	3	18	26	18	5	6	8	14	26%	15	24%
Plate Obstructed	0	2	2	2	0	0	2	0	2	1	0	0	2	4%	2	3%
Windshield Glare	3	4	3	4	1	4	4	2	1	6	4	7	4	7%	5	8%
Driver Obstructed	0	5	5	8	3	0	2	2	4	7	4	7	5	9%	2	3%
Car Obstructed	2	2	0	1	0	0	1	3	0	1	0	0	2	3%	10	17%
No DMV Match Found	5	6	9	6	5	4	1	7	5	7	3	10	6	11%	6	10%
LASD Expired	0	0	2	3	0	0	0	1	0	0	0	1	2	3%	6	9%
LASD Return	8	7	6	9	4	6	5	3	20	9	6	11	8	15%	6	9%
Other	0	0	0	0	0	0	0	0	0	0	0	0	0	0%	0	0%
Total:	45	46	73	50	36	24	42	61	57	43	26	59	52	100%	63	100%
Controllable Non-Issued Violations																
Framing of Plate	0	0	0	0	0	0	0	2	1	1	1	0	1	12%	3	14%
Focus / Clarity of Plate	0	0	0	0	0	0	1	0	0	1	0	0	1	10%	0	0%
Dark Interior	0	0	2	0	0	0	0	0	0	3	0	4	3	29%	2	9%
Framing of Driver	0	1	0	0	0	0	0	0	1	0	1	0	1	10%	1	5%
Focus / Clarity of Driver	0	0	0	0	0	0	0	0	0	0	0	0	0	0%	1	5%
Framing of Car	0	0	0	0	0	0	0	0	0	0	0	1	1	10%	0	0%
Data/Operator Error	0	0	0	0	0	2	0	0	0	0	0	0	2	20%	1	5%
Exposure	0	1	0	0	0	0	0	1	1	0	1	0	1	10%	5	24%
Equipment Malfunction	0	0	0	0	0	0	0	0	0	0	0	0	0	0%	8	34%
ACS Expired	0	0	0	0	0	0	0	0	0	0	0	0	0	0%	1	5%
Total:	0	2	2	0	0	2	1	3	3	5	3	5	10	100%	22	100%
Summary Metrics																
Daily Average Vehicle Passes	2,118	1,647	2,282	1,550	1,619	1,671	1,741	1,662	1,553	1,708	1,785	1,504	Year to Date Monthly Average		2012 Monthly Average	
Average Issued Speed	22	21	21	21	21	23	22	22	22	21	22	21	1,737		2,027	
Average Issued Red Seconds	39.7	34.6	28.0	28.1	30.6	9.3	24.4	17.8	12.5	18.4	12.3	20.7	23		23.1	
Citation / Violation Issuance Rate	52%	47%	36%	43%	38%	50%	35%	32%	36%	40%	57%	39%	42%		37%	
Controllable Issuance Rate	100%	95%	96%	100%	100%	93%	96%	91%	92%	86%	93%	89%	94%		91%	



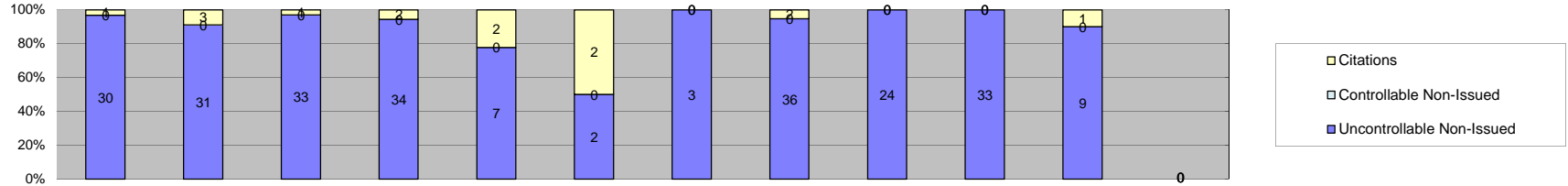
Los Angeles County MTA Gold Line
 Approach Summary Report
 Location 4129: WB to SB 1st @ Mission



Events	Jan-13												Year to Date Monthly Average		2012 Monthly Average	
	Jan-13	Feb-13	Mar-13	Apr-13	May-13	Jun-13	Jul-13	Aug-13	Sep-13	Oct-13	Nov-13	Dec-13	Quantity	%	Quantity	%
Non-Violations	377	409	495	434	465	396	526	579	561	586	477	544	487	98%	502	98%
Violations	4	4	5	6	3	2	31	1	4	78	2	6	12	2%	10	2%
Total:	381	413	500	440	468	398	557	580	565	664	479	550	500	100%	512	100%
Violations																
Uncontrollable Non-Issued	2	3	2	2	1	1	5	1	3	1	1	4	2	4%	8	82%
Controllable Non-Issued	0	0	0	0	0	0	25	0	0	76	0	0	51	93%	0	0%
Citations	2	1	3	4	2	1	1	0	1	1	1	2	2	3%	2	18%
Total:	4	4	5	6	3	2	31	1	4	78	2	6	54	100%	10	100%
Non-Violations																
Rear Axle Violation	0	1	0	0	0	0	0	0	0	0	0	0	1	0%	0	0%
Emergency Vehicle	0	0	1	1	2	3	2	1	1	3	1	3	2	0%	1	0%
Right Turn	0	0	0	0	0	0	0	0	0	0	0	0	0	0%	0	0%
No Violation Occurred	377	408	494	433	463	393	524	578	560	583	476	541	486	99%	501	100%
Total:	377	409	495	434	465	396	526	579	561	586	477	544	489	100%	503	100%
Uncontrollable Non-Issued Violations																
No Plate	1	0	1	0	1	1	0	0	0	0	0	0	1	10%	1	8%
Out of State Plate	0	0	0	0	0	0	0	0	0	0	0	1	1	10%	1	6%
Glare on Plate	0	0	0	0	0	0	0	0	0	0	0	0	0	0%	1	6%
Illegible Plate	0	0	0	0	0	0	0	0	0	0	1	1	1	10%	1	7%
Plate Obstructed	0	0	0	0	0	0	0	0	0	0	0	0	0	0%	0	0%
Windshield Glare	0	0	0	0	0	0	2	0	0	0	0	0	2	20%	1	6%
Driver Obstructed	0	0	0	1	0	0	1	0	1	0	0	0	1	10%	1	6%
Car Obstructed	0	0	0	0	0	0	1	0	0	0	0	0	1	10%	7	42%
No DMV Match Found	1	1	1	0	0	0	1	0	1	0	0	1	1	10%	1	7%
LASD Expired	0	0	0	0	0	0	0	0	0	0	0	1	1	10%	1	6%
LASD Return	0	2	0	1	0	0	0	1	1	1	0	0	1	12%	1	6%
Other	0	0	0	0	0	0	0	0	0	0	0	0	0	0%	0	0%
Total:	2	3	2	2	1	1	5	1	3	1	1	4	10	100%	17	100%
Controllable Non-Issued Violations																
Framing of Plate	0	0	0	0	0	0	0	0	0	0	0	0	0	0%	0	0
Focus / Clarity of Plate	0	0	0	0	0	0	0	0	0	0	0	0	0	0%	0	0
Dark Interior	0	0	0	0	0	0	0	0	0	0	0	0	0	0%	0	0
Framing of Driver	0	0	0	0	0	0	0	0	0	0	0	0	0	0%	0	0
Focus / Clarity of Driver	0	0	0	0	0	0	0	0	0	0	0	0	0	0%	0	0
Framing of Car	0	0	0	0	0	0	0	0	0	0	0	0	0	0%	0	0
Data/Operator Error	0	0	0	0	0	0	0	0	0	0	0	0	0	0%	0	0
Exposure	0	0	0	0	0	0	0	0	0	0	0	0	0	0%	0	0
Equipment Malfunction	0	0	0	0	0	0	25	0	0	76	0	0	51	100%	0	0
ACS Expired	0	0	0	0	0	0	0	0	0	0	0	0	0	0%	0	0
Total:	0	0	0	0	0	0	25	0	0	76	0	0	51	100%	0	0%
Summary Metrics																
Daily Average Vehicle Passes	138	99	140	91	98	122	138	111	132	148	142	134	Year to Date Monthly Average		2012 Monthly Average	
Average Issued Speed	21	26	21	19	18	22	21	0	26	20	19	22	124		171	
Average Issued Red Seconds	86.1	99.9	99.9	98.2	99.9	99.9	99.9	0	0.4	99.9	99.9	99.9	89		83.2	
Citation / Violation Issuance Rate	50%	25%	60%	67%	67%	50%	3%	0%	25%	1%	50%	33%	39%		19%	
Controllable Issuance Rate	100%	100%	100%	100%	100%	100%	4%	0%	100%	1%	100%	100%	82%		100%	



**Los Angeles County MTA Gold Line
Approach Summary Report
Location 4137: SB to EB Alameda @ Temple**



Events	Jan-13	Feb-13	Mar-13	Apr-13	May-13	Jun-13	Jul-13	Aug-13	Sep-13	Oct-13	Nov-13	Dec-13	Year to Date Monthly Average		2012 Monthly Average	
													Quantity	%	Quantity	%
Non-Violations	42	46	58	48	75	76	43	36	47	60	19	0	50	68%	43	82%
Violations	31	34	34	36	9	4	3	38	24	33	10	0	23	32%	9	18%
Total:	73	80	92	84	84	80	46	74	71	93	29	0	73	100%	52	100%
Violations																
Uncontrollable Non-Issued	30	31	33	34	7	2	3	36	24	33	9	0	22	93%	9	86%
Controllable Non-Issued	0	0	0	0	0	0	0	0	0	0	0	0	0	0%	0	0%
Citations	1	3	1	2	2	2	0	2	0	0	1	0	2	7%	1	14%
Total:	31	34	34	36	9	4	3	38	24	33	10	0	24	100%	10	100%
Non-Violations																
Rear Axle Violation	2	1	1	0	1	0	0	0	1	6	1	0	2	4%	2	4%
Emergency Vehicle	3	4	5	6	3	5	1	4	8	8	3	0	5	9%	4	10%
Right Turn	0	0	0	0	0	0	0	0	0	0	0	0	0	0%	0	0%
No Violation Occurred	37	41	52	42	71	71	42	32	38	46	15	0	44	87%	39	87%
Total:	42	46	58	48	75	76	43	36	47	60	19	0	51	100%	45	100%
Uncontrollable Non-Issued Violations																
No Plate	1	0	0	0	0	0	0	0	0	1	0	0	1	3%	1	4%
Out of State Plate	0	1	0	0	2	1	0	0	0	0	0	0	1	4%	1	3%
Glare on Plate	0	0	0	0	1	0	0	0	0	0	0	0	1	3%	1	3%
Illegible Plate	0	0	1	0	0	0	1	0	1	0	0	0	1	3%	0	0%
Plate Obstructed	0	0	0	0	0	0	0	0	0	0	0	0	0	0%	1	3%
Windshield Glare	1	2	3	0	1	0	1	0	0	2	0	0	2	5%	1	5%
Driver Obstructed	0	0	0	0	1	0	0	0	1	0	0	0	1	3%	0	0%
Car Obstructed	0	2	1	1	0	0	1	4	0	0	0	0	2	5%	1	3%
No DMV Match Found	1	1	0	2	0	1	0	1	0	1	0	0	1	3%	2	5%
LASD Expired	0	0	0	0	0	0	0	0	0	0	0	0	0	0%	1	3%
LASD Return	2	0	1	0	2	0	0	3	3	1	0	0	2	6%	2	6%
Other	25	25	27	31	0	0	0	28	19	28	9	0	24	67%	18	62%
Total:	30	31	33	34	7	2	3	36	24	33	9	0	36	100%	29	100%
Controllable Non-Issued Violations																
Framing of Plate	0	0	0	0	0	0	0	0	0	0	0	0	0	0	0	0
Focus / Clarity of Plate	0	0	0	0	0	0	0	0	0	0	0	0	0	0	0	0
Dark Interior	0	0	0	0	0	0	0	0	0	0	0	0	0	0	0	0
Framing of Driver	0	0	0	0	0	0	0	0	0	0	0	0	0	0	0	0
Focus / Clarity of Driver	0	0	0	0	0	0	0	0	0	0	0	0	0	0	0	0
Framing of Car	0	0	0	0	0	0	0	0	0	0	0	0	0	0	0	0
Data/Operator Error	0	0	0	0	0	0	0	0	0	0	0	0	0	0	0	0
Exposure	0	0	0	0	0	0	0	0	0	0	0	0	0	0	0	0
Equipment Malfunction	0	0	0	0	0	0	0	0	0	0	0	0	0	0	0	0
ACS Expired	0	0	0	0	0	0	0	0	0	0	0	0	0	0	0	0
Total:	0	0	0	0	0	0	0	0	0	0	0	0	0	0%	0	0%
Summary Metrics																
Daily Average Vehicle Passes	247	217	274	240	298	319	208	285	315	255	267	0	Year to Date Monthly Average		2012 Monthly Average	
Average Issued Speed	14	24	30	27	23	30	0	22	0	0	17	0	266		247	
Average Issued Red Seconds	0.1	31.6	0.6	0.2	97.0	1023.9	0	512.4	0	0	771.5	0	305		118.6	
Citation / Violation Issuance Rate	3%	9%	3%	6%	22%	50%	0%	5%	0%	0%	10%	0%	14%		27%	
Controllable Issuance Rate	100%	100%	100%	100%	100%	100%	0%	100%	0%	0%	100%	0%	100%		100%	



Calls For Information

Reason for Call	Dec-13	3 Month Average	Year to Date Average	Year to Date Total	2012 Average
<i>Appointment</i>	1	2	2	27	3
<i>Bail</i>	2	5	4	44	6
<i>Complaint</i>	0	0	0	0	0
<i>Contest Violation</i>	6	10	8	97	8
<i>Courtesy Notice</i>	1	0	1	4	2
<i>Explain Citation</i>	4	2	5	48	2
<i>Explain Court</i>	0	0	2	2	0
<i>Explain the Project</i>	0	0	1	1	0
<i>Extension</i>	2	1	2	14	2
<i>Other</i>	0	0	0	0	0
<i>Affidavit of Non-Liability</i>	5	7	7	78	7
<i>Affidavit of Non-Liability Status</i>	0	0	0	0	1
<i>Traffic School</i>	0	1	1	6	1
Total Calls	21	28	33	321	32
Appointments Scheduled	0	2	2	23	3
Affidavits of Non-Liability Processed	41	31	57	679	44
Court Packets Prepared	56	28	38	454	36



**Los Angeles County MTA Gold Line
Monthly Citation Yield - By Location
December 2013**

Direction	Location	Code	Days of Enforcement	Events	Violations	Citations	Yield*
EB to NB	3rd & Civic Center	4007	31	778	15	2	0.06
WB to SB	3rd & La Verne	4009	31	271	54	8	0.26
EB to NB	3rd & Mednik	4017	31	264	16	5	0.16
WB to SB	3rd & Mednik	4019	31	249	11	1	0.03
EB to NB	3rd & Arizona	4027	31	411	10	1	0.03
WB to SB	3rd & Arizona	4029	31	154	5	2	0.06
EB to NB	3rd and McDonnell	4037	31	512	18	3	0.10
WB to SB	3rd and McDonnell	4039	31	296	11	5	0.16
EB to NB	3rd & Ford	4047	31	439	32	6	0.19
WB to SB	3rd & Ford	4049	31	188	10	1	0.03
EB to NB	3rd & Eastern	4057	31	130	40	10	0.32
WB to SB	3rd & Eastern	4059	31	115	16	2	0.06
WB to SB	3rd & Downey	4069	31	504	52	15	0.48
EB to NB	3rd & Gage	4077	31	129	22	6	0.19
WB to SB	3rd & Gage	4079	31	230	43	8	0.26
EB to NB	3rd & Rowan	4083	31	573	24	1	0.03
WB to SB	3rd & Rowan	4085	31	42	29	2	0.06
EB to NB	1st & Lorena	4087	31	189	12	4	0.13
WB to SB	1st & Lorena	4089	31	106	17	7	0.23
EB to NB	1st & Clarence	4097	31	540	2	1	0.03
WB to SB	1st & Clarence	4099	31	735	20	3	0.10
WB to SB	1st & Utah	4109	31	377	3	0	0.00
WB to SB	1st & Anderson	4119	31	230	7	2	0.06
EB to NB	1st & Mission	4127	31	1,071	105	41	1.32
WB to SB	1st & Mission	4129	31	550	6	2	0.06
SB to EB	Alameda @ Temple	4137	0	0	0	0	NA
Totals			30	9,083	580	138	4.63

*Yield is the number of citations issued per day of enforcement.



Los Angeles County MTA Gold Line
Disposition Summary Report
December 2013

Disposition Type	Dec-13		3 Month Average		YTD Total		YTD Average		2012 Average	
	Count	Amount Paid	Count	Amount Paid	Count	Amount Paid	Count	Amount Paid	Count	Amount Paid
<i>Bail Forfeiture</i>	42	\$22,369.00	41	\$21,102	571	\$290,321	48	\$24,193	40	\$19,790
<i>Fine Paid</i>	24	\$12,595.00	19	\$8,687	261	\$123,909	22	\$10,326	25	\$8,249
<i>Department Void</i>	0	\$0.00	0	\$0	0	\$0	0	\$0	1	\$0
<i>Not Guilty</i>	52	\$0.00	69	\$0	816	\$0	68	\$0	48	\$0
<i>Section D Void</i>	41	\$0.00	31	\$0	679	\$0	57	\$0	45	\$0
<i>Traffic School</i>	37	\$17,793.00	36	\$18,328	506	\$231,513	42	\$19,293	40	\$18,764
Court Gross Total	196	\$52,757.00	196	\$48,117	2,833	\$645,743	236	\$53,812	199	\$46,803
MTA Gross Total*	103	\$14,936.31	96	\$13,977	1,338	\$194,147	112	\$16,179	105	\$15,251

*Logic built on following model (assuming the new 2009 fine and fee structure):

MTA receives \$146.31 of \$446.00 citation where bail forfeiture and fine paid occurs

MTA receives \$148.05 of \$509.00 citation when traffic school option is paid for



**Los Angeles County MTA Gold Line
Performance Report
December 2013**

	<u>Total Events</u>	<u>Non Violations</u>	<u>Potential Violations</u>	<u>Percent Citable</u>	<u>Non Issued Violations</u>	<u>No DMV Match</u>	<u>Police/ Client Rejected</u>	<u>Citations Issued</u>	<u>DMV Match Rate</u>	<u>Issuance Rate</u>	<u>Dispo Paid</u>	<u>Pay Rate</u>	<u>Closed No Pay</u>	<u>Pending</u>	<u>Closure Rate</u>	<u>Court Packs</u>	<u>Contest Rate</u>
Dec-09	5,805	5,387	418	7.2%	258	29	14	160	85.7%	38.3%	91	56.9%	-121	190	-18.8%	0	-
Jan-10	12,371	11,195	1,176	9.5%	843	65	40	333	85.2%	28.3%	158	47.4%	124	51	84.7%	0	-
Feb-10	11,564	10,651	913	7.9%	604	58	19	309	85.0%	33.8%	148	47.9%	119	42	86.4%	0	-
Mar-10	13,350	12,264	1,086	8.1%	739	79	26	347	82.5%	32.0%	157	45.2%	131	59	83.0%	0	-
Apr-10	14,976	13,798	1,178	7.9%	809	68	46	369	85.9%	31.3%	153	41.5%	162	54	85.4%	4	-
May-10	13,007	11,845	1,162	8.9%	855	70	38	307	83.1%	26.4%	140	45.6%	124	43	86.0%	3	-
Jun-10	13,058	11,782	1,276	9.8%	895	66	72	381	87.3%	29.9%	169	44.4%	163	49	87.1%	4	4.4%
Jul-10	13,229	11,896	1,333	10.1%	1000	62	78	333	86.9%	25.0%	138	41.4%	143	52	84.4%	26	16.5%
Aug-10	13,811	12,469	1,342	9.7%	1053	83	70	289	81.2%	21.5%	116	40.1%	124	49	83.0%	0	0.0%
Sep-10	14,099	12,605	1,494	10.6%	1090	69	40	404	86.5%	27.0%	217	53.7%	116	71	82.4%	2	1.3%
Oct-10	12,325	11,102	1,223	9.9%	882	75	27	341	83.1%	27.9%	168	49.3%	101	72	78.9%	3	2.0%
Nov-10	12,575	11,261	1,314	10.4%	922	72	49	392	86.0%	29.8%	203	51.8%	105	84	78.6%	16	11.4%
Dec-10	14,143	12,889	1,254	8.9%	933	61	20	321	84.8%	25.6%	157	48.9%	106	58	81.9%	84	49.7%
Jan-11	12,708	11,805	903	7.1%	565	78	16	338	81.9%	37.4%	142	42.0%	149	47	86.1%	38	27.5%
Feb-11	12,856	11,969	887	6.9%	559	72	16	328	82.7%	37.0%	131	39.9%	143	54	83.5%	27	23.3%
Mar-11	14,005	12,975	1,030	7.4%	709	64	21	321	84.2%	31.2%	153	47.7%	106	62	80.7%	23	10.6%
Apr-11	13,373	12,307	1,066	8.0%	719	82	102	347	84.6%	32.6%	160	46.1%	107	80	76.9%	39	23.2%
May-11	13,666	12,487	1,179	8.6%	814	104	112	365	82.1%	31.0%	150	41.1%	118	97	73.4%	35	17.2%
Jun-11	12,946	11,982	964	7.4%	672	82	104	292	82.8%	30.3%	111	38.0%	71	110	62.3%	43	27.4%
Jul-11	11,546	10,599	947	8.2%	667	71	135	280	85.4%	29.6%	101	36.1%	75	104	62.9%	62	43.7%
Aug-11	9,015	8,185	830	9.2%	554	33	127	276	92.4%	33.3%	111	40.2%	79	86	68.8%	55	42.0%
Sep-11	9,303	8,386	917	9.9%	686	104	125	231	77.4%	25.2%	116	50.2%	39	76	67.1%	43	28.1%
Oct-11	10,383	9,500	883	8.5%	669	61	120	214	84.6%	24.2%	100	46.7%	41	73	65.9%	36	22.5%
Nov-11	9,455	8,859	596	6.3%	410	63	92	186	81.5%	31.2%	64	34.4%	37	85	54.3%	43	28.7%
Dec-11	12,822	11,973	849	6.6%	605	64	141	244	85.7%	28.7%	81	33.2%	44	119	51.2%	27	24.3%
Jan-12	10,553	9,795	758	7.2%	592	60	111	166	82.2%	21.9%	61	36.7%	50	55	66.9%	35	34.7%
Feb-12	8,612	7,696	916	10.6%	696	73	124	220	82.5%	24.0%	74	33.6%	61	85	61.4%	28	25.2%
Mar-12	9,115	8,201	914	10.0%	743	82	125	171	78.3%	18.7%	56	32.7%	47	68	60.2%	20	17.2%
Apr-12	9,037	8,236	801	8.9%	617	69	92	184	80.0%	23.0%	55	29.9%	55	74	59.8%	46	46.0%
May-12	9,202	8,355	847	9.2%	676	71	128	171	80.8%	20.2%	49	28.7%	55	67	60.8%	49	76.6%
Jun-12	8,007	7,372	635	7.9%	422	63	111	213	83.7%	33.5%	39	18.3%	55	119	44.1%	24	37.5%

Jul-12	9,645	8,903	742	7.7%	508	60	83	234	84.1%	31.5%	58	24.8%	63	113	51.7%	31	48.4%
Aug-12	10,021	9,172	849	8.5%	570	78	84	279	82.3%	32.9%	73	26.2%	85	121	56.6%	37	57.8%
Sep-12	9,192	8,486	706	7.7%	474	100	97	232	76.7%	32.9%	47	20.3%	72	113	51.3%	30	46.9%
Oct-12	9,961	9,186	775	7.8%	481	101	66	294	78.1%	37.9%	59	20.1%	105	130	55.8%	51	79.7%
Nov-12	8,916	8,280	636	7.1%	455	88	40	181	71.5%	28.5%	41	22.7%	47	93	48.6%	37	57.8%
Dec-12	8,392	7,857	535	6.4%	404	74	46	131	70.5%	24.5%	33	25.2%	33	65	50.4%	35	31.5%
Jan-13	8,216	7,631	585	7.1%	364	73	61	221	79.4%	37.8%	44	19.9%	72	105	52.5%	64	55.2%
Feb-13	8,254	7,562	692	8.4%	426	79	70	266	81.0%	38.4%	67	25.2%	65	134	49.6%	40	40.0%
Mar-13	9,445	8,677	768	8.1%	509	98	71	259	77.1%	33.7%	67	25.9%	74	118	54.4%	54	84.4%
Apr-13	9,469	8,692	777	8.2%	552	92	91	225	77.5%	29.0%	63	28.0%	30	132	41.3%	43	43.0%
May-13	10,045	9,333	712	7.1%	492	80	86	220	79.3%	30.9%	44	20.0%	40	136	38.2%	57	89.1%
Jun-13	6,223	5,781	442	7.1%	250	51	56	192	82.9%	43.4%	43	22.4%	20	129	32.8%	19	29.7%
Jul-13	8,808	8,179	629	7.1%	464	76	95	165	77.4%	26.2%	29	17.6%	13	123	25.5%	20	18.0%
Aug-13	9,858	8,989	869	8.8%	693	101	116	176	74.3%	20.3%	28	15.9%	8	140	20.5%	17	14.7%
Sep-13	9,597	8,760	837	8.7%	648	113	173	189	76.2%	22.6%	16	8.5%	24	149	21.2%	17	17.0%
Oct-13	10,019	9,183	836	8.3%	630	92	88	206	76.2%	24.6%	3	1.5%	1	202	1.9%	33	51.6%
Nov-13	8,332	7,815	517	6.2%	319	77	68	198	77.6%	38.3%	0	0.0%	0	198	0.0%	35	54.7%
Dec-13	9,083	8,503	580	6.4%	442	76	100	138	75.8%	23.8%	0	0.0%	0	138	0.0%	56	69.1%
Total	565,149	480,815	43,578	14.9%	30,939	3,662	3,832	12,639	81.8%	29.0%	4,484	37.8%	3,481	4,674	67.2%	1491	35.57%

* Pay Rate and Closure Rate percentages are based on a 4 month lag

** Contested Citations take into account a 6 month lag from the violation date to the trail date.