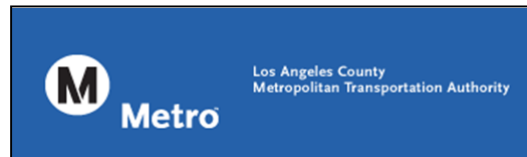


Riding Metro



Photo Enforcement Program Monthly Executive Summary



December 2013

MTA Blue Line

MTA Gold Line

MTA Orange Line

MTA Expo Line





Table of Contents

Report Title	Page
<i>Executive Summary</i>	3
<i>Additional Metrics - In-Roadway Warning Lights</i>	4
<i>In the News - Photo Enforcement Around the Country</i>	5
<i>Approach Summary Report, All Programs</i>	6
<i>Approach Summary Report, MTA Blue Line</i>	7
<i>Approach Summary Report, MTA Gold Line</i>	8
<i>Approach Summary Report, MTA Orange Line</i>	9
<i>Approach Summary Report, MTA Expo Line</i>	10
<i>Customer Service Report, All Programs</i>	11
<i>Customer Service Report, MTA Blue Line</i>	12
<i>Customer Service Report, MTA Gold Line</i>	13
<i>Customer Service Report, MTA Orange Line</i>	14
<i>Customer Service Report, MTA Expo Line</i>	15
<i>Disposition Summary Report, All Programs</i>	16
<i>Disposition Summary Report, MTA Blue Line</i>	17
<i>Disposition Summary Report, MTA Gold Line</i>	18
<i>Disposition Summary Report, MTA Orange Line</i>	19
<i>Disposition Summary Report, MTA Expo Line</i>	20
<i>Performance Report, All Programs</i>	21
<i>Performance Report, MTA Blue Line</i>	22
<i>Performance Report, MTA Gold Line</i>	23
<i>Performance Report, MTA Orange Line</i>	24
<i>Performance Report, MTA Expo Line</i>	25



Executive Summary

ACS is pleased to present this monthly executive summary, along with the monthly metrics and analysis reports, for the Los Angeles County Metropolitan Transportation Authority's Photo Enforcement Services. This summary and the associated monthly metrics reports include photo enforcement related details for the Blue, Expo and Gold Line dedicated light rail corridors as well as the Orange Line dedicated bus route.

MTA Combined

In December 2013 the combined photo enforcement projects for the MTA captured a total of 34,469 events. Of these 7,957 were recorded as violations and 226,512 were non-violations. A combined total of 2,823 citations have been issued reflecting a combined issuance rate of 35% and a controllable issuance rate of 90%.

We are still seeing a number of events expiring in the LASD queue (219 in December)

MTA Blue Line

In December 2013, the photo enforcement project for the MTA Blue Line captured a total of 5,119 events. Of these, 778 were recorded as violations and 4,341 were non-violations. A total number of 166 citations have been issued reflecting an issuance rate of 21% and a controllable issuance rate of 74%.

MTA Gold Line

In December 2013, the photo enforcement project for the MTA Gold Line captured a total of 9,083 events. Of these 580 were recorded as violations while 8,503 were non-violations. A total of 138 citations were issued reflecting an issuance rate of 24% and a controllable issuance rate of 75%.

MTA Orange Line

In December 2013, the photo enforcement project for the MTA Orange Line captured a total of 15,675 events. Of these: 6,133 were recorded as violations and 15,675 were non-violations. A total number of 2,424 citations have been issued reflecting an issuance rate of 40% and a controllable issuance rate of 94%.

MTA Expo Line

In December 2013, the photo enforcement project for the MTA Expo Line captured a total of 4,592 events. Of these: 466 were recorded as violations and 4,126 were non-violations. A total number of 95 citations have been issued reflecting an issuance rate of 20% and a controllable issuance rate of 71%.

In the News - Photo Enforcement Around the Country

Red Light Districts: What You Should Know About WeHo's Traffic Light Cameras

Mon, Jan 27, 2014

By Stevie St. John

www.weherville.com

No one likes a traffic ticket, but drivers especially see red when it comes to citations issued on the basis of red-light cameras. Maybe it's the feeling that Big Brother is keeping tabs on drivers using technology instead of old-fashioned police patrols. The jaw-dropping amount of the tickets—nearly \$500—surely doesn't help matters. (Why so much? In addition to the base fine, the tickets are rife with added-on fees.)

Although the City of Los Angeles stopped using red light cameras in 2011, the cameras are still used in other area cities, including West Hollywood, Culver City and Beverly Hills.

Opponents of the cameras view the system as abusive and suggest that many ticketed drivers did not run a red light deliberately and merely made an error in judgment. Zenon Porche, the Sheriff's Department deputy who oversees the system in West Hollywood, says that it is fair and that it has significantly reducing the number of fatal crashes in the city.

Some of WEHerville.com's readers have reached out with questions about the program. Here is what we learned that you need to know about red light cameras in West Hollywood:

Where are the cameras?

In West Hollywood, there are red light cameras at eight intersections:

- Fountain Avenue at Crescent Heights Boulevard, at Fairfax Avenue and at La Brea Avenue
- La Cienega Boulevard at Sunset Boulevard and at Melrose Avenue
- Santa Monica Boulevard at Fairfax Avenue and at La Brea Avenue
- Beverly Boulevard at Robertson Boulevard

Why so many cameras in such a city of only 1.89 square miles?

According to Porche, accident rates determine how many cameras are needed and where they are placed. "West Hollywood is small, but it's very congested," he said.

What can I be ticketed for?

If you're caught on a red light camera in West Hollywood, you can get a ticket only for going straight through a red light. Other cities cite drivers for making turns through red lights, but Porche said that, statistically speaking, tickets for turning violations aren't justified in WeHo.

How many tickets are being issued, and who is being cited?

In 2013, the total number of citations countywide was 11,399, according to information provided by the Sheriff's Department. Only 465 of those citations were issued to West Hollywood residents. Porche noted that West Hollywood residents are more likely to know where the cameras are and thus avoid being snapped running a red light.

Do I really have to acknowledge and pay this ticket?

Well, err, it's hard to be definite, and it depends on what you mean by "have to." But from a strictly legal standpoint, the answer is "yes."

"You have an obligation to respond – end of story," said Porche, who noted that an arrest warrant can be issued if you don't respond. "We can come after you ... Make no mistake about it, it's a valid ticket, and people are legally obligated to respond." (Note: Responding can mean acknowledging and paying the ticket OR explaining and verifying that you are not the person who was driving the car when the violation occurred.)

From a purely practical standpoint, many reports (some going so far as to call payments "voluntary") suggest that ducking tickets hasn't resulted in much in the way of consequences. The LA Weekly, for example, reported that a Los Angeles City Council member conceded that there were no consequences to not paying before LA ended the red light ticket program. Ignoring a ticket can lead to a call from a collection agency, but that's not likely to affect your credit score, your driver's license or car insurance rate. However, it could come up if you end up in court on another matter.

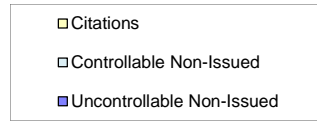
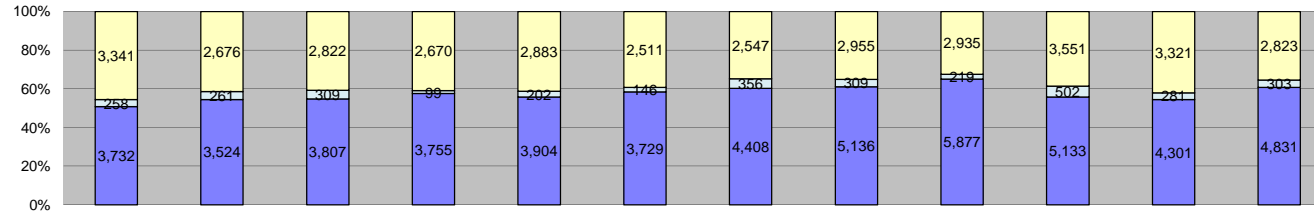
For his part, Porche said he has talked to the courts about stepping up enforcement of red light tickets. Ignoring the ticket may be the equivalent of going through an intersection on a borderline yellow. Perhaps you'll make it through unscathed, or perhaps you'll be in for an unpleasant surprise later.

Red Light Resources

- The Sheriff's Department provides information, including videos with Deputy Zenon Porche, online.
- Jay Beeber, the libertarian activist who led the campaign to get Los Angeles to drop the red light camera program, makes his case against the lights on his website, SaferStreets L.A.
- Highway Robbery is another website that offers both arguments against the program and advice on what to do if you get ticketed.



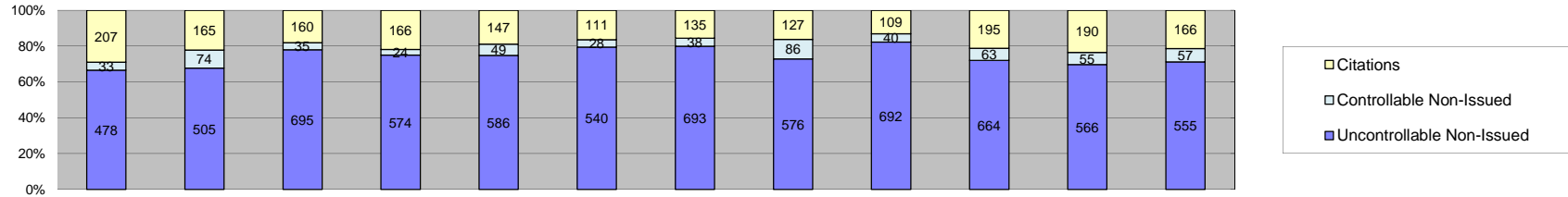
Los Angeles County MTA (All) Approach Summary Report All Locations



Events	Jan-13	Feb-13	Mar-13	Apr-13	May-13	Jun-13	Jul-13	Aug-13	Sep-13	Oct-13	Nov-13	Dec-13	Year to Date Average		2012 Average	
	Quantity	Quantity	Quantity	Quantity	Quantity	Quantity	Quantity	Quantity	Quantity	Quantity	Quantity	Quantity	Quantity	%	Quantity	%
Non-Violations	27,197	26,707	32,356	29,077	37,684	28,711	27,882	28,222	27,121	29,628	24,902	26,512	28,833	79%	21,966	79%
Violations	7,331	6,461	6,938	6,524	6,989	6,386	7,311	8,400	9,031	9,186	7,903	7,957	7,535	21%	5,765	21%
Total:	34,528	33,168	39,294	35,601	44,673	35,097	35,193	36,622	36,152	38,814	32,805	34,469	36,368	100%	27,731	100%
Violations																
Uncontrollable Non-Issued	3,732	3,524	3,807	3,755	3,904	3,729	4,408	5,136	5,877	5,133	4,301	4,831	4,345	58%	3,305	57%
Controllable Non-Issued	258	261	309	99	202	146	356	309	219	502	281	303	270	4%	295	5%
Citations	3,341	2,676	2,822	2,670	2,883	2,511	2,547	2,955	2,935	3,551	3,321	2,823	2,920	39%	2,165	38%
Total:	7,331	6,461	6,938	6,524	6,989	6,386	7,311	8,400	9,031	9,186	7,903	7,957	7,535	100%	5,765	100%
Non-Violations																
Rear Axle Violation	57	32	36	25	33	24	27	37	59	50	34	39	38	0%	52	0%
Gate Down - No Train	0	7	6	3	4	2	3	1	0	0	1	7	4	0%	11	0%
Train Activation	7	0	7	0	1	2	2	1	0	0	0	0	3	0%	20	0%
Emergency Vehicle	497	436	499	328	417	447	589	476	562	603	499	467	485	2%	416	2%
Right Turn	46	39	55	27	46	57	63	54	51	53	42	45	48	0%	27	0%
No Violation Occurred	26,590	26,193	31,753	28,694	37,183	28,179	27,198	27,653	26,449	28,922	24,326	25,954	28,258	98%	21,440	98%
Total:	27,197	26,707	32,356	29,077	37,684	28,711	27,882	28,222	27,121	29,628	24,902	26,512	28,836	100%	21,966	100%
Uncontrollable Non-Issued Violations																
No Plate	806	707	724	741	761	751	840	922	1,030	1,012	826	870	833	19%	571	16%
Out of State Plate	112	113	125	106	123	120	131	159	174	176	144	137	135	3%	83	2%
Glare on Plate	104	84	68	52	18	52	31	56	56	58	194	280	88	2%	126	4%
Illegible Plate	218	192	249	276	209	130	284	363	256	191	179	223	231	5%	210	6%
Plate Obstructed	49	55	47	33	45	42	44	31	50	51	61	37	45	1%	44	1%
Windshield Glare	247	296	511	509	607	699	755	776	637	495	398	329	522	12%	273	8%
Driver Obstructed	138	142	197	216	184	123	192	253	232	167	99	150	174	4%	102	3%
Car Obstructed	72	87	114	59	74	68	83	72	68	95	69	72	78	2%	219	6%
No DMV Match Found	558	466	505	520	468	459	510	671	754	694	634	648	574	13%	478	14%
LASD Expired	6	0	2	18	4	3	33	10	140	16	1	219	41	1%	323	9%
LASD Return	1,254	1,198	1,118	1,043	1,411	1,282	1,505	1,689	2,359	1,987	1,560	1,726	1,511	34%	916	26%
Other	168	184	147	182	0	0	0	134	121	191	136	140	156	4%	158	5%
Total:	3,732	3,524	3,807	3,755	3,904	3,729	4,408	5,136	5,877	5,133	4,301	4,831	4,387	100%	3,502	100%
Controllable Non-Issued Violations																
Framing of Plate	3	3	2	2	1	1	0	6	7	6	3	3	3	1%	20	6%
Focus / Clarity of Plate	6	2	15	2	3	0	4	2	3	19	9	29	9	3%	14	4%
Dark Interior	100	92	68	52	71	44	66	61	63	85	74	110	74	27%	63	17%
Framing of Driver	2	6	2	0	0	2	1	2	8	13	8	3	5	2%	19	5%
Focus / Clarity of Driver	2	2	3	0	1	1	4	2	5	7	7	8	4	1%	7	2%
Framing of Car	1	7	5	2	2	1	1	4	7	12	19	9	6	2%	35	10%
Data Error	5	12	17	0	12	10	11	12	17	9	21	2	12	4%	54	15%
Exposure	7	22	16	7	11	13	7	47	27	20	23	36	20	7%	25	7%
Equipment Malfunction	132	115	176	33	101	74	262	172	72	326	117	103	140	51%	83	23%
ACS Expired	0	0	5	1	0	0	0	1	10	5	0	0	4	2%	42	12%
Total:	258	261	309	99	202	146	356	309	219	502	281	303	276	100%	362	100%
Summary Metrics																
Daily Average Vehicle Passes	427,025	422,144	445,460	417,323	449,392	453,135	431,108	465,340	496,069	491,074	482,688	468,995	Year to Date Average		2012 Average	
Average Issued Speed	20	20	20	20	21	21	20	20	20	20	20	20	20	454,146	383,413	
Average Issued Red Seconds	28.2	32.3	24.4	20.6	30.2	33.8	27.7	34.1	28.4	20.6	25.2	20.7	27.2	20		
Citation / Violation Issuance Rate	46%	41%	41%	41%	41%	39%	35%	35%	32%	39%	42%	35%	39%	27.2	30.1	
Controllable Issuance Rate	93%	91%	90%	96%	93%	95%	88%	91%	93%	88%	92%	90%	92%	39%	38%	



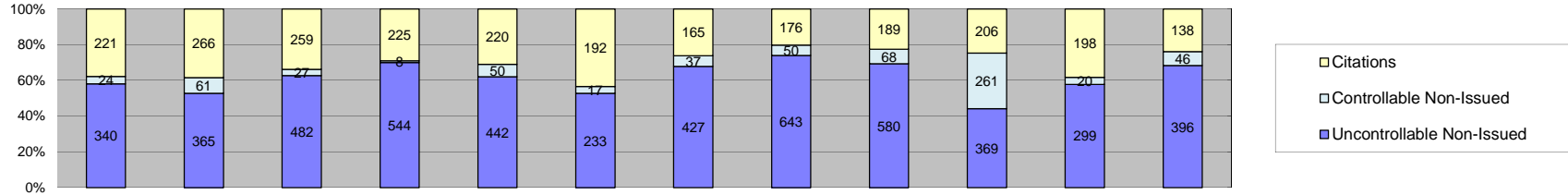
Los Angeles County MTA Blue Line Approach Summary Report All Locations



Events	Jan-13	Feb-13	Mar-13	Apr-13	May-13	Jun-13	Jul-13	Aug-13	Sep-13	Oct-13	Nov-13	Dec-13	Year to Date Average		2012 Average	
													Quantity	%	Quantity	%
Non-Violations	4,289	3,950	4,993	4,969	5,101	4,699	5,156	5,056	4,546	5,424	4,558	4,341	4,757	86%	3,062	81%
Violations	718	744	890	764	782	679	866	789	841	922	811	778	799	14%	716	19%
Total:	5,007	4,694	5,883	5,733	5,883	5,378	6,022	5,845	5,387	6,346	5,369	5,119	5,556	100%	3,778	100%
Violations																
Uncontrollable Non-Issued	478	505	695	574	586	540	693	576	692	664	566	555	594	74%	413	58%
Controllable Non-Issued	33	74	35	24	49	28	38	86	40	63	55	57	49	6%	84	12%
Citations	207	165	160	166	147	111	135	127	109	195	190	166	157	20%	218	30%
Total:	718	744	890	764	782	679	866	789	841	922	811	778	799	100%	716	100%
Non-Violations																
Rear Axle Violation	23	5	3	1	1	1	3	0	2	0	1	3	4	0%	10	0%
Gate Down - No Train	0	7	6	3	4	2	3	1	0	0	1	7	4	0%	11	0%
Train Activation	7	0	7	0	1	2	2	1	0	0	0	0	3	0%	20	1%
Emergency Vehicle	25	23	28	13	17	27	43	25	32	38	39	31	28	1%	10	0%
Right Turn	0	0	0	0	0	0	0	0	0	0	0	0	0	0%	0	0%
No Violation Occurred	4,234	3,915	4,949	4,952	5,078	4,667	5,105	5,029	4,512	5,386	4,517	4,300	4,720	99%	3,011	98%
Total:	4,289	3,950	4,993	4,969	5,101	4,699	5,156	5,056	4,546	5,424	4,558	4,341	4,760	100%	3,062	100%
Uncontrollable Non-Issued Violations																
No Plate	86	78	88	62	76	85	99	85	94	92	70	79	83	14%	57	14%
Out of State Plate	7	10	10	9	7	9	17	15	8	12	6	10	10	2%	10	2%
Glare on Plate	2	6	3	2	3	5	4	1	8	5	0	3	4	1%	1	0%
Illegible Plate	24	22	15	38	31	11	52	38	41	36	52	42	34	6%	3	1%
Plate Obstructed	16	13	14	6	2	8	5	5	5	12	10	7	9	1%	8	2%
Windshield Glare	101	116	219	158	156	176	161	162	213	180	164	129	161	27%	75	18%
Driver Obstructed	20	26	38	37	37	24	47	28	33	38	24	21	31	5%	25	6%
Car Obstructed	33	36	63	14	21	18	22	10	18	26	16	22	25	4%	78	19%
No DMV Match Found	77	61	78	88	83	58	81	74	71	84	75	105	78	13%	63	15%
LASD Expired	6	0	0	0	0	0	0	0	0	0	1	15	7	1%	1	0%
LASD Return	106	137	167	160	170	146	205	158	201	179	148	122	158	26%	81	19%
Other	0	0	0	0	0	0	0	0	0	0	0	0	0	0%	16	4%
Total:	478	505	695	574	586	540	693	576	692	664	566	555	599	100%	417	100%
Controllable Non-Issued Violations																
Framing of Plate	0	0	2	0	0	1	0	0	1	1	0	0	1	2%	6	7%
Focus / Clarity of Plate	0	0	7	0	0	0	0	1	1	7	0	0	4	7%	2	2%
Dark Interior	16	14	7	7	18	5	18	7	15	21	19	31	15	25%	13	15%
Framing of Driver	0	3	1	0	0	0	1	1	3	5	4	2	3	4%	8	9%
Focus / Clarity of Driver	0	0	2	0	0	0	1	0	2	4	0	2	2	4%	2	2%
Framing of Car	0	6	4	0	0	0	0	1	3	6	8	2	4	7%	22	25%
Data Error	0	1	0	0	9	0	6	1	0	3	10	1	4	7%	13	15%
Exposure	4	12	2	0	0	3	0	4	7	6	3	6	5	9%	4	5%
Equipment Malfunction	13	38	9	17	22	19	12	71	8	10	11	13	20	34%	18	21%
ACS Expired	0	0	1	0	0	0	0	0	0	0	0	0	1	2%	0	0%
Total:	33	74	35	24	49	28	38	86	40	63	55	57	60	100%	86	100%
Summary Metrics																
	Year to Date Average												2012 Average			
Daily Average Vehicle Passes	61,704	74,413	70,764	72,995	75,732	83,745	85,780	78,127	86,546	86,161	81,324	83,574	78,405		77,552	
Average Issued Speed	15	16	16	17	17	17	16	17	15	19	18	15	16		15	
Average Issued Red Seconds	19.1	14.6	17.7	13.2	16.0	12.6	14.0	11.3	28.6	10.0	5.9	9.1	14.3		11.6	
Citation / Violation Issuance Rate	29%	22%	18%	22%	19%	16%	16%	16%	13%	21%	23%	21%	20%		30%	
Controllable Issuance Rate	86%	69%	82%	87%	75%	80%	78%	60%	73%	76%	78%	74%	76%		72%	



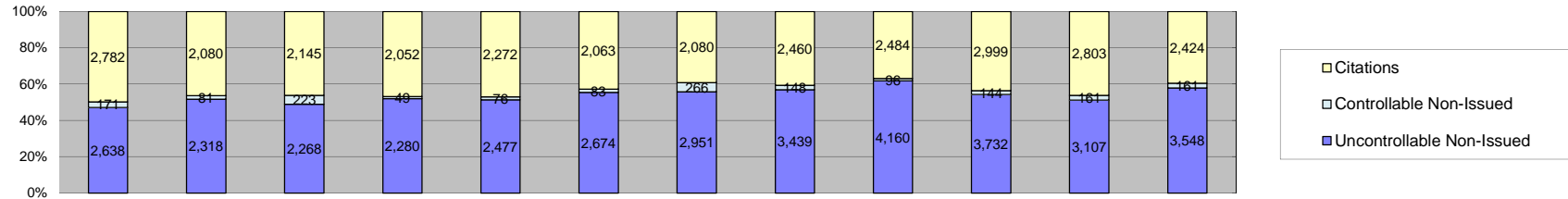
Los Angeles County MTA Gold Line Approach Summary Report All Locations



Events	Jan-13	Feb-13	Mar-13	Apr-13	May-13	Jun-13	Jul-13	Aug-13	Sep-13	Oct-13	Nov-13	Dec-13	Year to Date Average		2012 Average	
													Quantity	%	Quantity	%
Non-Violations	7,631	7,562	8,677	8,692	9,333	5,781	8,179	8,989	8,760	9,183	7,815	8,503	8,259	92%	8,462	92%
Violations	585	692	768	777	712	442	629	869	837	836	517	580	687	8%	760	8%
Total:	8,216	8,254	9,445	9,469	10,045	6,223	8,808	9,858	9,597	10,019	8,332	9,083	8,946	100%	9,221	100%
Violations																
Uncontrollable Non-Issued	340	365	482	544	442	233	427	643	580	369	299	396	427	62%	506	67%
Controllable Non-Issued	24	61	27	8	50	17	37	50	68	261	20	46	56	8%	47	6%
Citations	221	266	259	225	220	192	165	176	189	206	198	138	205	30%	206	27%
Total:	585	692	768	777	712	442	629	869	837	836	517	580	687	100%	760	100%
Non-Violations																
Rear Axle Violation	6	8	2	1	4	1	3	1	1	8	3	1	3	0%	5	0%
Emergency Vehicle	252	219	242	123	192	215	287	238	299	333	263	249	243	3%	241	3%
Right Turn	1	0	0	0	0	0	0	0	0	0	0	0	1	0%	0	0%
No Violation Occurred	7,372	7,335	8,433	8,568	9,137	5,565	7,889	8,750	8,460	8,842	7,549	8,253	8,013	97%	8,216	97%
Total:	7,631	7,562	8,677	8,692	9,333	5,781	8,179	8,989	8,760	9,183	7,815	8,503	8,260	100%	8,462	100%
Uncontrollable Non-Issued Violations																
No Plate	67	39	69	78	80	39	67	91	62	54	43	62	63	14%	64	12%
Out of State Plate	6	8	9	7	6	6	7	13	11	6	5	11	8	2%	6	1%
Glare on Plate	0	2	4	0	1	3	5	7	17	1	1	0	5	1%	14	3%
Illegible Plate	58	67	112	113	72	33	102	148	80	40	42	54	77	18%	104	19%
Plate Obstructed	2	8	8	7	6	2	4	2	4	4	4	0	5	1%	7	1%
Windshield Glare	19	19	32	33	55	34	32	62	45	24	30	25	34	8%	31	6%
Driver Obstructed	20	32	39	71	51	6	25	52	52	28	17	44	36	8%	21	4%
Car Obstructed	9	16	11	6	5	2	11	18	3	3	3	3	8	2%	82	15%
No DMV Match Found	73	79	98	92	80	51	76	101	113	92	77	76	84	19%	77	14%
LASD Expired	0	0	2	15	0	1	3	5	1	1	0	21	6	1%	29	5%
LASD Return	61	70	71	91	86	56	95	116	173	88	68	100	90	20%	92	17%
Other	25	25	27	31	0	0	0	28	19	28	9	0	24	5%	18	3%
Total:	340	365	482	544	442	233	427	643	580	369	299	396	438	100%	544	100%
Controllable Non-Issued Violations																
Framing of Plate	0	1	0	0	0	0	0	2	1	2	3	1	2	2%	4	6%
Focus / Clarity of Plate	0	1	3	0	3	0	3	1	0	12	0	0	4	5%	3	4%
Dark Interior	3	1	3	4	7	1	1	2	3	7	6	20	5	6%	5	7%
Framing of Driver	0	3	1	0	0	2	0	1	3	6	2	0	3	3%	2	3%
Focus / Clarity of Driver	0	0	0	0	1	0	0	1	0	0	2	0	1	2%	1	1%
Framing of Car	0	1	1	0	0	0	0	0	0	1	1	1	1	1%	2	2%
Data Error	5	10	10	0	0	9	4	9	12	3	0	0	8	10%	7	10%
Exposure	0	4	9	1	2	4	2	24	15	10	6	24	9	12%	6	8%
Equipment Malfunction	16	40	0	3	37	1	27	10	34	220	0	0	43	57%	41	57%
ACS Expired	0	0	0	0	0	0	0	0	0	0	0	0	0	0%	1	1%
Total:	24	61	27	8	50	17	37	50	68	261	20	46	75	100%	72	100%
Summary Metrics													Year to Date Monthly Average		2011 Monthly Average	
Daily Average Vehicle Passes	18,603	17,167	20,711	17,863	19,938	21,298	21,045	21,210	21,710	21,256	22,061	20,160	20,252		18,985	
Average Issued Speed	20	21	21	21	21	21	21	20	20	20	20	20	20		20	
Average Issued Red Seconds	31.5	33.0	34.6	34.6	37.9	78.6	46.6	58.9	34.4	40.1	66.8	33.9	44.2		42.1	
Citation / Violation Issuance Rate	38%	38%	34%	29%	31%	43%	26%	20%	23%	25%	38%	24%	31%		27%	
Controllable Issuance Rate	90%	81%	91%	97%	81%	92%	82%	78%	74%	44%	91%	75%	81%		82%	



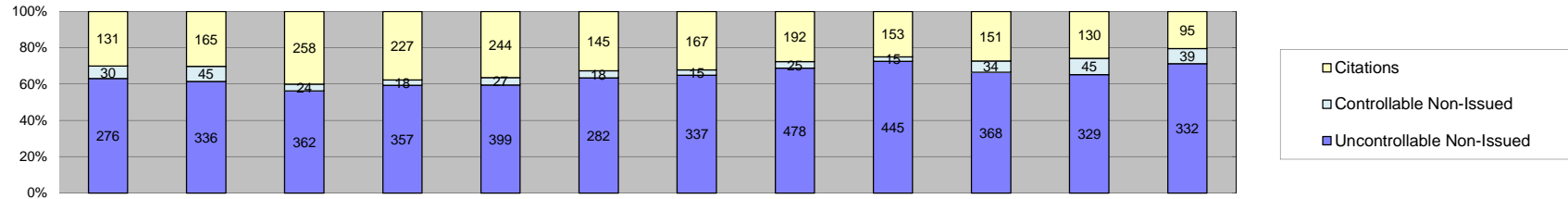
Los Angeles County MTA Orange Line Approach Summary Report All Locations



Events	Jan-13	Feb-13	Mar-13	Apr-13	May-13	Jun-13	Jul-13	Aug-13	Sep-13	Oct-13	Nov-13	Dec-13	Year to Date Average		2012 Average	
													Quantity	%	Quantity	%
Non-Violations	11,257	10,873	12,464	11,136	18,027	11,570	10,901	10,366	9,584	10,512	8,588	9,542	11,235	67%	6,115	62%
Violations	5,591	4,479	4,636	4,381	4,825	4,820	5,297	6,047	6,740	6,875	6,071	6,133	5,491	33%	3,734	38%
Total:	16,848	15,352	17,100	15,517	22,852	16,390	16,198	16,413	16,324	17,387	14,659	15,675	16,726	100%	9,848	100%
Violations																
Uncontrollable Non-Issued	2,638	2,318	2,268	2,280	2,477	2,674	2,951	3,439	4,160	3,732	3,107	3,548	2,966	54%	2,015	54%
Controllable Non-Issued	171	81	223	49	76	83	266	148	96	144	161	161	138	3%	131	3%
Citations	2,782	2,080	2,145	2,052	2,272	2,063	2,080	2,460	2,484	2,999	2,803	2,424	2,387	43%	1,588	43%
Total:	5,591	4,479	4,636	4,381	4,825	4,820	5,297	6,047	6,740	6,875	6,071	6,133	5,491	100%	3,734	100%
Non-Violations																
Rear Axle Violation	19	14	20	23	26	22	21	36	29	27	17	9	22	0%	24	0%
Emergency Vehicle	192	146	198	168	175	181	212	181	186	196	169	165	181	2%	115	2%
Right Turn	45	39	55	27	46	57	63	54	51	53	42	45	48	0%	26	0%
No Violation Occurred	11,001	10,674	12,191	10,918	17,780	11,310	10,605	10,095	9,318	10,236	8,360	9,323	10,984	98%	5,950	97%
Total:	11,257	10,873	12,464	11,136	18,027	11,570	10,901	10,366	9,584	10,512	8,588	9,542	11,235	100%	6,115	100%
Uncontrollable Non-Issued Violations																
No Plate	603	544	512	554	546	589	629	691	811	826	666	683	638	21%	400	19%
Out of State Plate	92	87	94	82	105	98	102	122	146	151	126	112	110	4%	61	3%
Glare on Plate	99	75	59	50	11	38	21	46	28	52	190	277	79	3%	99	5%
Illegible Plate	93	69	86	81	62	56	63	93	97	66	51	101	77	3%	59	3%
Plate Obstructed	25	28	14	14	23	30	29	39	33	44	26	26	27	1%	21	1%
Windshield Glare	92	114	211	235	317	424	506	479	321	244	157	142	270	9%	126	6%
Driver Obstructed	75	63	95	76	73	81	105	130	109	78	32	53	81	3%	33	2%
Car Obstructed	27	28	30	36	42	45	48	41	46	64	49	42	42	1%	31	1%
No DMV Match Found	403	318	324	339	305	350	352	427	514	462	440	414	387	13%	297	14%
LASD Expired	0	0	0	3	3	2	30	4	139	15	0	183	47	2%	281	13%
LASD Return	989	855	723	667	990	961	1,066	1,283	1,809	1,592	1,226	1,376	1,128	37%	625	29%
Other	140	137	120	143	0	0	0	101	101	149	126	139	128	4%	122	6%
Total:	2,638	2,318	2,268	2,280	2,477	2,674	2,951	3,439	4,160	3,732	3,107	3,548	3,014	100%	2,153	100%
Controllable Non-Issued Violations																
Framing of Plate	3	2	0	2	1	0	0	4	4	3	0	2	3	2%	9	6%
Focus / Clarity of Plate	5	0	4	2	0	0	0	0	2	0	9	7	5	3%	7	4%
Dark Interior	60	46	44	26	30	26	37	44	38	45	33	52	40	27%	32	21%
Framing of Driver	2	0	0	0	0	0	0	0	2	0	1	0	2	1%	7	5%
Focus / Clarity of Driver	1	1	1	0	0	1	3	1	3	2	5	3	2	1%	1	1%
Framing of Car	0	0	0	2	0	1	1	3	4	5	10	6	4	3%	10	6%
Data Error	0	0	7	0	2	0	1	1	5	3	7	0	4	2%	29	18%
Exposure	0	2	1	3	4	6	1	7	3	1	13	5	4	3%	5	3%
Equipment Malfunction	100	30	164	13	39	49	223	88	25	85	83	86	82	55%	17	11%
ACS Expired	0	0	2	1	0	0	0	0	10	0	0	0	4	3%	39	25%
Total:	171	81	223	49	76	83	266	148	96	144	161	161	150	100%	155	100%
Summary Metrics													Year to Date Average		2011 Monthly Average	
Daily Average Vehicle Passes	331,460	317,876	339,836	310,408	335,579	328,670	303,259	343,393	367,344	360,975	357,236	346,163	336,850		271,513	
Average Issued Speed	23	23	23	23	24	23	24	24	23	23	23	24	23		25	
Average Issued Red Seconds	13.8	10.8	10.2	11.1	10.0	10.3	9.3	11.0	9.2	10.5	10.6	10.3	10.6		9.2	
Citation / Violation Issuance Rate	50%	46%	46%	47%	47%	43%	39%	41%	37%	44%	46%	40%	44%		45%	
Controllable Issuance Rate	94%	96%	91%	98%	97%	96%	89%	94%	96%	95%	95%	94%	95%		93%	



Los Angeles County MTA Expo Line Approach Summary Report All Locations



Events	Jan-13	Feb-13	Mar-13	Apr-13	May-13	Jun-13	Jul-13	Aug-13	Sep-13	Oct-13	Nov-13	Dec-13	Year to Date Average		2012 Average	
													Quantity	%	Quantity	%
Non-Violations	4,020	4,322	6,222	4,280	5,223	6,661	3,646	3,811	4,231	4,509	3,941	4,126	4,583	89%	4,327	89%
Violations	437	546	644	602	670	445	519	695	613	553	504	466	558	11%	557	11%
Total:	4,457	4,868	6,866	4,882	5,893	7,106	4,165	4,506	4,844	5,062	4,445	4,592	5,141	100%	4,884	100%
Violations																
Uncontrollable Non-Issued	276	336	362	357	399	282	337	478	445	368	329	332	358	64%	371	67%
Controllable Non-Issued	30	45	24	18	27	18	15	25	15	34	45	39	28	5%	33	6%
Citations	131	165	258	227	244	145	167	192	153	151	130	95	172	31%	153	27%
Total:	437	546	644	602	670	445	519	695	613	553	504	466	558	69%	557	73%
Non-Violations																
Rear Axle Violation	9	5	11	0	2	0	0	0	27	15	13	26	14	0%	14	0%
Emergency Vehicle	28	48	31	24	33	24	47	32	45	36	28	22	33	1%	50	1%
Right Turn	0	0	0	0	0	0	0	0	0	0	0	0	0	0%	0	0%
No Violation Occurred	3,983	4,269	6,180	4,256	5,188	6,637	3,599	3,779	4,159	4,458	3,900	4,078	4,541	99%	4,263	99%
Total:	4,020	4,322	6,222	4,280	5,223	6,661	3,646	3,811	4,231	4,509	3,941	4,126	4,587	100%	4,327	100%
Uncontrollable Non-Issued Violations																
No Plate	50	46	55	47	59	38	45	55	63	40	47	46	49	13%	51	13%
Out of State Plate	7	8	12	8	5	7	5	9	9	7	7	4	7	2%	6	2%
Glare on Plate	3	1	2	0	3	6	1	2	3	0	3	0	3	1%	12	4%
Illegible Plate	43	34	36	44	44	30	67	84	38	49	34	26	44	12%	44	13%
Plate Obstructed	6	6	11	6	14	2	6	2	2	2	3	4	5	1%	8	2%
Windshield Glare	35	47	49	83	79	65	56	73	58	47	33	33	56	15%	40	12%
Driver Obstructed	23	21	25	32	23	12	15	43	38	23	26	32	26	7%	24	7%
Car Obstructed	3	7	10	3	6	3	2	3	1	2	1	5	4	1%	29	9%
No DMV Match Found	5	8	5	1	0	0	1	69	56	56	42	53	30	8%	42	12%
LASD Expired	0	0	0	0	1	0	0	1	0	0	0	0	1	0%	12	4%
LASD Return	98	136	157	125	165	119	139	132	176	128	118	128	135	37%	118	35%
Other	3	22	0	8	0	0	0	5	1	14	1	1	7	2%	3	1%
Total:	276	336	362	357	399	282	337	478	445	368	329	332	367	100%	336	100%
Controllable Non-Issued Violations																
Framing of Plate	0	0	0	0	0	0	0	0	1	0	0	0	1	3%	2	4%
Focus / Clarity of Plate	1	1	1	0	0	0	1	0	0	0	0	22	5	13%	3	5%
Dark Interior	21	31	14	15	16	12	10	8	12	16	7	7	14	36%	12	26%
Framing of Driver	0	0	0	0	0	0	0	0	0	2	1	1	1	3%	2	3%
Focus / Clarity of Driver	1	1	0	0	0	0	0	0	0	1	0	3	2	4%	3	6%
Framing of Car	1	0	0	0	2	0	0	0	0	0	0	0	2	4%	2	4%
Data Error	0	1	0	0	1	1	0	1	0	0	4	1	2	4%	5	11%
Exposure	3	4	4	3	5	0	4	12	2	3	1	1	4	10%	10	20%
Equipment Malfunction	3	7	3	0	3	5	0	3	5	11	23	4	7	17%	7	15%
ACS Expired	0	0	2	0	0	0	0	1	0	5	0	0	3	7%	2	4%
Total:	30	45	24	18	27	18	15	25	15	34	45	39	39	100%	48	100%
Summary Metrics													Year to Date Average		2012 Monthly Average	
Daily Average Vehicle Passes	15,259	12,688	14,150	16,058	18,143	19,422	21,025	22,610	20,470	22,682	22,066	19,098	18,639		15,365	
Average Issued Speed	20	20	20	21	21	21	19	19	20	20	21	23	20		21	
Average Issued Red Seconds	48.3	70.8	35.1	23.5	56.8	33.7	40.7	55.1	41.2	21.7	17.3	29.4	39.5		57.3	
Citation / Violation Issuance Rate	30%	30%	40%	38%	36%	33%	32%	28%	25%	27%	26%	20%	30%		27%	
Controllable Issuance Rate	81%	79%	91%	93%	90%	89%	92%	88%	91%	82%	74%	71%	85%		83%	



Calls For Information

Reason for Call	Dec-13	3 Month Average	Year to Date Average	Year to Date Total	2012 Average
<i>Appointment</i>	35	21	27	307	24
<i>Bail</i>	68	55	62	727	47
<i>Complaint</i>	0	1	2	2	2
<i>Contest Violation</i>	122	107	112	1,346	87
<i>Courtesy Notice</i>	6	5	11	99	28
<i>Explain Citation</i>	38	39	44	505	25
<i>Explain Court</i>	2	1	4	10	9
<i>Explain the Project</i>	0	0	1	1	0
<i>Extension</i>	32	19	22	248	19
<i>Other</i>	0	0	1	1	1
<i>Affidavit of Non-Liability</i>	89	70	80	960	60
<i>Affidavit of Non-Liability Status</i>	7	4	8	76	8
<i>Traffic School</i>	15	13	14	138	13
Total Calls	414	334	389	4,420	324
Appointments Scheduled	22	16	22	246	21
Affidavits of Non-Liability Processed	967	802	833	9,995	624
Court Packets Prepared	530	518	466	5,589	222



Calls For Information

Reason for Call	Dec-13	3 Month Average	Year to Date Average	Year to Date Total	2012 Average
<i>Appointment</i>	2	1	3	24	4
<i>Bail</i>	5	2	4	40	4
<i>Complaint</i>	0	0	0	0	1
<i>Contest Violation</i>	7	7	7	89	11
<i>Courtesy Notice</i>	1	1	2	15	3
<i>Explain Citation</i>	0	2	3	23	3
<i>Explain Court</i>	0	0	0	0	0
<i>Explain the Project</i>	0	0	0	0	0
<i>Extension</i>	1	1	1	11	3
<i>Other</i>	0	0	0	0	0
<i>Affidavit of Non-Liability</i>	2	6	6	74	8
<i>Affidavit of Non-Liability Status</i>	0	0	1	3	2
<i>Traffic School</i>	0	1	2	5	1
Total Calls	18	19	29	284	40
Appointments Scheduled	2	1	2	21	3
Affidavits of Non-Liability Processed	34	24	34	402	41
Court Packets Prepared	30	58	39	463	27



Calls For Information

Reason for Call	Dec-13	3 Month Average	Year to Date Average	Year to Date Total	2012 Average
<i>Appointment</i>	1	2	2	27	3
<i>Bail</i>	2	5	4	44	6
<i>Complaint</i>	0	0	0	0	0
<i>Contest Violation</i>	6	10	8	97	8
<i>Courtesy Notice</i>	1	0	1	4	2
<i>Explain Citation</i>	4	2	5	48	2
<i>Explain Court</i>	0	0	2	2	0
<i>Explain the Project</i>	0	0	1	1	0
<i>Extension</i>	2	1	2	14	2
<i>Other</i>	0	0	0	0	0
<i>Affidavit of Non-Liability</i>	5	7	7	78	7
<i>Affidavit of Non-Liability Status</i>	0	0	0	0	1
<i>Traffic School</i>	0	1	1	6	1
Total Calls	21	28	33	321	32
Appointments Scheduled	0	2	2	23	3
Affidavits of Non-Liability Processed	41	31	57	679	44
Court Packets Prepared	56	28	38	454	36



Calls For Information

Reason for Call	Dec-13	3 Month Average	Year to Date Average	Year to Date Total	2012 Average
<i>Appointment</i>	29	17	20	243	15
<i>Bail</i>	56	45	51	606	33
<i>Complaint</i>	0	1	2	2	1
<i>Contest Violation</i>	101	86	91	1,095	62
<i>Courtesy Notice</i>	4	4	6	75	20
<i>Explain Citation</i>	34	34	34	412	19
<i>Explain Court</i>	2	1	2	8	9
<i>Explain the Project</i>	0	0	0	0	0
<i>Extension</i>	24	15	16	197	12
<i>Other</i>	0	0	1	1	1
<i>Affidavit of Non-Liability</i>	76	55	63	755	40
<i>Affidavit of Non-Liability Status</i>	7	4	6	68	5
<i>Traffic School</i>	14	10	10	124	9
Total Calls	347	271	303	3,586	227
Appointments Scheduled	17	13	16	191	13
Affidavits of Non-Liability Processed	593	435	446	5,349	262
Court Packets Prepared	420	406	363	4,353	156



Calls For Information

Reason for Call	Dec-13	3 Month Average	Year to Date Average	Year to Date Total	2012 Average
<i>Appointment</i>	3	1	2	13	2
<i>Bail</i>	5	3	3	37	4
<i>Complaint</i>	0	0	0	0	0
<i>Contest Violation</i>	8	4	5	65	6
<i>Courtesy Notice</i>	0	1	1	5	3
<i>Explain Citation</i>	0	1	2	22	2
<i>Explain Court</i>	0	0	0	0	0
<i>Explain the Project</i>	0	0	0	0	0
<i>Extension</i>	5	2	3	26	2
<i>Other</i>	0	0	0	0	0
<i>Affidavit of Non-Liability</i>	6	2	5	53	5
<i>Affidavit of Non-Liability Status</i>	0	0	1	5	0
<i>Traffic School</i>	1	0	1	3	1
Total Calls	28	15	24	229	25
Appointments Scheduled	3	1	2	11	2
Affidavits of Non-Liability Processed	299	313	297	3,565	277
Court Packets Prepared	24	25	27	319	4



Los Angeles County MTA - All
Disposition Summary Report
December 2013

	Dec-13		3 Month Average		YTD Total		YTD Average		2012 Average	
Disposition Type	Count /Amount Paid		Count /Amount Paid		Count /Amount Paid		Count /Amount Paid		Count /Amount Paid	
<i>Bail Forfeiture</i>	553	\$284,103.00	594	\$304,320	7,220	\$3,686,114	602	\$307,176	357	\$177,869
<i>Fine Paid</i>	194	\$83,636.00	163	\$74,900	1,989	\$931,020	166	\$77,585	145	\$67,018
<i>Department Void</i>	0	\$0.00	0	\$0	0	\$0	0	\$0	7	\$0
<i>Not Guilty</i>	668	\$0.00	841	\$0	10,003	\$0	834	\$0	305	\$0
<i>Section D Void</i>	967	\$0.00	802	\$0	9,469	\$0	789	\$0	553	\$0
<i>Traffic School</i>	784	\$403,108.00	604	\$308,561	7,826	\$3,996,910	652	\$333,076	322	\$162,236
Court Gross Total	3,166	\$770,847.00	3,005	\$687,781	36,507	\$8,614,044	3,042	\$717,837	1,689	\$407,124
MTA Gross Total*	1,531	\$223,123.77	1,361	\$197,207	17,035	\$2,478,381	1,420	\$206,532	824	\$126,566

*Logic built on following model (assuming the new 2009 fine and fee structure):

MTA receives \$146.31 of \$446.00 citation where bail forfeiture and fine paid occurs

MTA receives \$148.05 of \$509.00 citation when traffic school option is paid for



Los Angeles County MTA Blue Line
Disposition Summary Report
December 2013

	Dec-13		3 Month Average		YTD Total		YTD Average		2012 Average	
Disposition Type	Count /Amount Paid		Count /Amount Paid		Count /Amount Paid		Count /Amount Paid		Count /Amount Paid	
<i>Bail Forfeiture</i>	24	\$12,306.00	39	\$19,623	513	\$261,166	43	\$21,764	44	\$22,049
<i>Fine Paid</i>	18	\$950.00	11	\$5,793	170	\$83,189	14	\$6,932	18	\$9,210
<i>Department Void</i>	0	\$0.00	0	\$0	0	\$0	0	\$0	0	\$0
<i>Not Guilty</i>	60	\$0.00	67	\$0	819	\$0	68	\$0	37	\$0
<i>Section D Void</i>	34	\$0.00	24	\$0	402	\$0	34	\$0	30	\$0
<i>Traffic School</i>	26	\$14,404.00	26	\$14,008	391	\$215,385	33	\$17,949	27	\$12,277
Court Gross Total	162	\$27,660.00	166	\$39,424	2,295	\$559,740	191	\$46,645	157	\$43,536
MTA Gross Total*	68	\$9,868.32	286	\$10,938	1,074	\$155,768	90	\$12,981	89	\$12,860

*Logic built on following model (assuming the new 2009 fine and fee structure):

MTA receives \$146.31 of \$446.00 citation where bail forfeiture and fine paid occurs

MTA receives \$148.05 of \$509.00 citation when traffic school option is paid for



Los Angeles County MTA Gold Line
Disposition Summary Report
December 2013

	Dec-13		3 Month Average		YTD Total		YTD Average		2012 Average	
Disposition Type	Count /Amount Paid		Count /Amount Paid		Count /Amount Paid		Count /Amount Paid		Count /Amount Paid	
<i>Bail Forfeiture</i>	42	\$22,369.00	41	\$21,102	571	\$290,321	48	\$24,193	40	\$19,790
<i>Fine Paid</i>	24	\$12,595.00	19	\$8,687	261	\$123,909	22	\$10,326	25	\$8,249
<i>Department Void</i>	0	\$0.00	0	\$0	0	\$0	0	\$0	1	\$0
<i>Not Guilty</i>	52	\$0.00	69	\$0	816	\$0	68	\$0	48	\$0
<i>Section D Void</i>	41	\$0.00	31	\$0	679	\$0	57	\$0	45	\$0
<i>Traffic School</i>	37	\$17,793.00	36	\$18,328	506	\$231,513	42	\$19,293	40	\$18,764
Court Gross Total	196	\$52,757.00	196	\$48,117	2,833	\$645,743	236	\$53,812	199	\$46,803
MTA Gross Total*	103	\$14,936.31	96	\$13,977	1,338	\$194,147	112	\$16,179	105	\$15,251

*Logic built on following model (assuming the new 2009 fine and fee structure):

MTA receives \$146.31 of \$446.00 citation where bail forfeiture and fine paid occurs

MTA receives \$148.05 of \$509.00 citation when traffic school option is paid for



Los Angeles County MTA Orange Line
Disposition Summary Report
December 2013

	Dec-13		3 Month Average		YTD Total		YTD Average		2012 Average	
Disposition Type	Count /Amount Paid		Count /Amount Paid		Count /Amount Paid		Count /Amount Paid		Count /Amount Paid	
<i>Bail Forfeiture</i>	466	\$238,595.00	480	\$246,646	5,772	\$2,950,004	481	\$245,834	257	\$127,781
<i>Fine Paid</i>	130	\$58,731.00	115	\$51,171	1,365	\$629,311	114	\$52,443	102	\$49,299
<i>Department Void</i>	0	\$0.00	0	\$0	0	\$0	0	\$0	3	\$0
<i>Not Guilty</i>	528	\$0.00	660	\$0	7,807	\$0	651	\$0	203	\$0
<i>Section D Void</i>	593	\$0.00	435	\$0	4,823	\$0	402	\$0	300	\$0
<i>Traffic School</i>	694	\$357,026.00	515	\$263,239	6,617	\$3,393,782	551	\$282,815	244	\$125,835
Court Gross Total	2411	\$654,352.00	2,204	\$561,057	26,384	\$6,973,097	2,199	\$581,091	1,109	\$302,916
MTA Gross Total*	1290	\$188,159.46	1,109	\$160,629	13,754	\$2,002,450	1,146	\$166,871	603	\$87,538

*Logic built on following model (assuming the new 2009 fine and fee structure):

MTA receives \$146.31 of \$446.00 citation where bail forfeiture and fine paid occurs

MTA receives \$148.05 of \$509.00 citation when traffic school option is paid for



Los Angeles County MTA Expo Line
Disposition Summary Report
December 2013

	Dec-13		3 Month Average		YTD Total		YTD Average		2012 Average	
Disposition Type	Count /Amount Paid		Count /Amount Paid		Count /Amount Paid		Count /Amount Paid		Count /Amount Paid	
<i>Bail Forfeiture</i>	21	\$10,833.00	34	\$16,949	364	\$184,623	30	\$15,385	17	\$8,250
<i>Fine Paid</i>	22	\$11,360.00	18	\$9,249	193	\$94,611	16	\$7,884	1	\$260
<i>Department Void</i>	0	\$0.00	0	\$0	0	\$0	0	\$0	3	\$0
<i>Not Guilty</i>	28	\$0.00	45	\$0	561	\$0	47	\$0	16	\$0
<i>Section D Void</i>	299	\$0.00	313	\$0	3,565	\$0	297	\$0	177	\$0
<i>Traffic School</i>	27	\$13,885.00	28	\$12,985	312	\$156,230	26	\$13,019	10	\$5,360
Court Gross Total	397	\$36,078.00	439	\$12,985	4,995	\$435,464	416	\$36,289	225	\$13,870
MTA Gross Total*	70	\$10,159.68	80	\$11,662	869	\$126,015	72	\$10,501	28	\$4,012

*Logic built on following model (assuming the new 2009 fine and fee structure):

MTA receives \$146.31 of \$446.00 citation where bail forfeiture and fine paid occurs

MTA receives \$148.05 of \$509.00 citation when traffic school option is paid for



**Los Angeles County MTA - All
Performance Report
December 2013**

	<u>Total Events</u>	<u>Non Violations</u>	<u>Potential Violations</u>	<u>Percent Citable</u>	<u>Non Issued Violations</u>	<u>No DMV Match</u>	<u>Police/ Client Rejected</u>	<u>Citations Issued</u>	<u>DMV Match Rate</u>	<u>Issuance Rate</u>	<u>Dispo Paid</u>	<u>Pay Rate</u>	<u>Closed No Pay</u>	<u>Pending</u>	<u>Closure Rate</u>	<u>Court Packs</u>	<u>Contest Rate</u>
Jan-04	5,235	4,080	1,155	22.1%	420	11	1	735	98.5%	63.6%	541	73.6%	43	151	79.5%	0	NA
Feb-04	4,775	3,564	1,211	25.4%	450	13	6	761	98.3%	62.8%	562	73.9%	53	146	80.8%	0	NA
Mar-04	5,478	4,052	1,426	26.0%	637	20	3	789	97.5%	55.3%	569	72.1%	47	173	78.1%	0	NA
Apr-04	4,159	2,638	1,521	36.6%	788	20	6	733	97.4%	48.2%	551	75.2%	50	132	82.0%	0	NA
May-04	4,008	2,442	1,566	39.1%	595	24	4	971	97.6%	62.0%	684	70.4%	66	221	77.2%	0	NA
Jun-04	3,563	2,232	1,331	37.4%	729	22	2	602	96.5%	45.2%	421	69.9%	45	136	77.4%	0	NA
Jul-04	3,772	2,425	1,347	35.7%	532	19	4	815	97.7%	60.5%	582	71.4%	64	169	79.3%	0	NA
Aug-04	3,476	2,270	1,206	34.7%	696	28	12	510	94.9%	42.3%	366	71.8%	39	105	79.4%	0	NA
Sep-04	3,701	2,417	1,284	34.7%	823	22	6	461	95.5%	35.9%	340	73.8%	33	88	80.9%	0	NA
Oct-04	3,497	2,260	1,237	35.4%	549	15	3	688	97.9%	55.6%	487	70.8%	66	135	80.4%	0	NA
Nov-04	3,218	2,056	1,162	36.1%	467	20	15	695	97.3%	59.8%	500	71.9%	46	149	78.6%	0	NA
Dec-04	3,843	2,736	1,107	28.8%	590	15	14	517	97.3%	46.7%	375	72.5%	49	93	82.0%	0	NA
Jan-05	3,656	2,621	1,035	28.3%	456	15	41	579	97.6%	55.9%	421	72.7%	39	119	79.4%	0	NA
Feb-05	3,200	2,207	993	31.0%	440	9	27	553	98.5%	55.7%	404	73.1%	43	106	80.8%	0	NA
Mar-05	3,156	2,116	1,040	33.0%	454	26	29	586	95.9%	56.3%	435	74.2%	49	102	82.6%	0	NA
Apr-05	3,688	2,383	1,305	35.4%	755	126	32	550	82.2%	42.1%	404	73.5%	49	97	82.4%	0	NA
May-05	3,617	2,390	1,227	33.9%	618	117	24	609	84.4%	49.6%	442	72.6%	52	115	81.1%	0	NA
Jun-05	3,871	2,719	1,152	29.8%	650	114	41	502	82.6%	43.6%	351	69.9%	39	112	77.7%	0	NA
Jul-05	3,507	2,277	1,230	35.1%	538	111	0	692	86.2%	56.3%	457	66.0%	105	130	81.2%	0	NA
Aug-05	3,711	2,481	1,230	33.1%	675	142	19	555	80.2%	45.1%	396	71.4%	47	112	79.8%	0	NA
Sep-05	3,855	2,629	1,226	31.8%	562	125	8	664	84.3%	54.2%	475	71.5%	50	139	79.1%	0	NA
Oct-05	4,897	3,728	1,169	23.9%	566	97	18	603	86.5%	51.6%	421	69.8%	61	121	79.9%	0	NA
Nov-05	4,956	3,785	1,171	23.6%	633	105	16	538	84.1%	45.9%	399	74.2%	36	103	80.9%	0	NA
Dec-05	4,919	3,937	982	20.0%	529	116	26	453	80.5%	46.1%	346	76.4%	36	71	84.3%	0	NA
Jan-06	4,752	3,726	1,026	21.6%	558	98	30	468	83.6%	45.6%	348	74.4%	39	81	82.7%	70	NA
Feb-06	4,929	3,808	1,121	22.7%	657	97	33	464	83.7%	41.4%	338	72.8%	35	91	80.4%	39	NA
Mar-06	5,620	4,412	1,208	21.5%	710	110	72	498	83.8%	41.2%	347	69.7%	57	94	81.1%	45	6.8%
Apr-06	5,159	4,084	1,075	20.8%	572	126	30	503	80.9%	46.8%	368	73.2%	53	82	83.7%	66	10.9%
May-06	4,914	3,801	1,113	22.6%	566	124	26	547	82.2%	49.1%	397	72.6%	57	93	83.0%	68	12.6%
Jun-06	4,855	3,834	1,021	21.0%	531	153	17	490	76.8%	48.0%	366	74.7%	39	85	82.7%	49	10.8%
Jul-06	4,835	3,620	1,215	25.1%	647	108	40	568	84.9%	46.7%	396	69.7%	60	112	80.3%	40	8.5%
Aug-06	8,531	4,436	4,095	48.0%	3,555	168	39	540	77.5%	13.2%	403	74.6%	48	89	83.5%	62	13.4%
Sep-06	8,699	4,330	4,369	50.2%	2,264	314	44	2,105	87.3%	48.2%	1,658	78.8%	189	258	87.7%	53	10.6%
Oct-06	11,421	7,032	4,389	38.4%	1,982	406	54	2,407	85.8%	54.8%	1,902	79.0%	211	294	87.8%	88	17.5%
Nov-06	18,486	13,562	4,924	26.6%	2,892	281	79	2,032	88.3%	41.3%	1,574	77.5%	173	285	86.0%	117	21.4%
Dec-06	18,900	14,123	4,777	25.3%	2,489	318	94	2,288	88.2%	47.9%	1,795	78.5%	177	316	86.2%	170	34.7%
Jan-07	15,064	10,592	4,472	29.7%	2,198	314	92	2,274	88.3%	50.8%	1,760	77.4%	180	334	85.3%	198	34.9%
Feb-07	11,643	7,418	4,225	36.3%	2,093	395	76	2,132	84.8%	50.5%	1,662	78.0%	183	287	86.5%	219	40.6%
Mar-07	11,388	6,587	4,801	42.2%	2,228	509	107	2,573	84.0%	53.6%	2,042	79.4%	210	321	87.5%	145	6.9%
Apr-07	10,374	6,353	4,021	38.8%	1,675	394	123	2,346	86.2%	58.3%	1,845	78.6%	193	308	86.9%	315	13.1%
May-07	5,883	2,114	3,769	64.1%	1,275	368	113	2,494	87.6%	66.2%	1,912	76.7%	176	406	83.7%	226	11.1%



Los Angeles County MTA - All
Performance Report
December 2013

	<u>Total Events</u>	<u>Non Violations</u>	<u>Potential Violations</u>	<u>Percent Citable</u>	<u>Non Issued Violations</u>	<u>No DMV Match</u>	<u>Police/ Client Rejected</u>	<u>Citations Issued</u>	<u>DMV Match Rate</u>	<u>Issuance Rate</u>	<u>Dispo Paid</u>	<u>Pay Rate</u>	<u>Closed No Pay</u>	<u>Pending</u>	<u>Closure Rate</u>	<u>Court Packs</u>	<u>Contest Rate</u>
Jun-07	8,806	4,314	4,492	51.0%	2,102	413	121	2,390	85.9%	53.2%	1,839	76.9%	163	388	83.8%	288	12.6%
Jul-07	8,813	4,156	4,657	52.8%	2,851	389	139	1,806	83.3%	38.8%	1,321	73.1%	137	348	80.7%	332	14.6%
Aug-07	9,965	5,410	4,555	45.7%	2,368	451	197	2,187	84.1%	48.0%	1,580	72.2%	162	445	79.7%	455	21.3%
Sep-07	7,925	4,316	3,609	45.5%	1,699	349	155	1,910	85.5%	52.9%	1,291	67.6%	149	470	75.4%	278	10.8%
Oct-07	11,109	6,867	4,242	38.2%	2,240	315	236	2,002	87.7%	47.2%	1,325	66.2%	192	485	75.8%	388	16.5%
Nov-07	12,043	7,845	4,198	34.9%	2,114	295	153	2,084	88.3%	49.6%	1,296	62.2%	318	470	77.4%	316	12.7%
Dec-07	10,346	6,442	3,904	37.7%	2,138	329	191	1,766	85.6%	45.2%	1,155	65.4%	264	347	80.4%	332	13.9%
Jan-08	10,209	6,698	3,511	34.4%	1,821	300	166	1,690	86.1%	48.1%	1,325	78.4%	181	184	89.1%	284	15.7%
Feb-08	11,223	7,742	3,481	31.0%	1,940	279	207	1,541	86.2%	44.3%	1,158	75.1%	197	186	87.9%	278	12.7%
Mar-08	11,457	7,412	4,045	35.3%	2,460	279	150	1,585	86.1%	39.2%	1,187	74.9%	182	216	86.4%	272	14.2%
Apr-08	10,676	6,799	3,877	36.3%	2,322	228	72	1,555	87.7%	40.1%	1,201	77.2%	145	209	86.6%	288	14.4%
May-08	11,037	7,021	4,016	36.4%	2,548	241	159	1,468	87.1%	36.6%	1,143	77.9%	137	188	87.2%	249	11.9%
Jun-08	9,918	5,834	4,084	41.2%	2,438	256	120	1,646	87.3%	40.3%	1,285	78.1%	147	214	87.0%	318	18.0%
Jul-08	9,833	6,298	3,535	36.0%	1,975	244	97	1,560	87.2%	44.1%	1,148	73.6%	208	204	86.9%	281	16.6%
Aug-08	9,212	5,605	3,607	39.2%	1,909	258	163	1,698	87.8%	47.1%	1,226	72.2%	205	267	84.3%	209	13.6%
Sep-08	9,495	6,072	3,423	36.1%	1,667	250	101	1,756	88.1%	51.3%	1,323	75.3%	207	226	87.1%	366	23.1%
Oct-08	9,457	6,028	3,429	36.3%	1,630	198	115	1,799	90.6%	52.5%	1,298	72.2%	189	312	82.7%	254	16.3%
Nov-08	8,619	5,675	2,944	34.2%	1,287	210	125	1,657	89.5%	56.3%	1,199	72.4%	206	252	84.8%	195	13.3%
Dec-08	9,054	6,031	3,023	33.4%	1,315	214	97	1,708	89.4%	56.5%	1,225	71.7%	265	218	87.2%	215	13.1%
Jan-09	8,541	5,582	2,959	34.6%	1,259	225	87	1,700	88.8%	57.5%	1,238	72.8%	242	220	87.1%	261	16.7%
Feb-09	8,362	5,647	2,715	32.5%	1,207	186	65	1,508	89.4%	55.5%	1,099	72.9%	223	186	87.7%	340	20.0%
Mar-09	8,928	5,836	3,092	34.6%	1,503	215	88	1,589	88.6%	51.4%	1,191	75.0%	184	214	86.5%	197	11.2%
Apr-09	9,141	5,849	3,292	36.0%	1,708	156	76	1,584	91.4%	48.1%	1,137	71.8%	233	214	86.5%	255	14.2%
May-09	8,491	5,536	2,955	34.8%	1,381	231	102	1,574	87.9%	53.3%	1,146	72.8%	225	203	87.1%	262	15.8%
Jun-09	7,545	4,904	2,641	35.0%	1,281	172	114	1,360	89.6%	51.5%	959	70.5%	220	181	86.7%	287	16.8%
Jul-09	7,643	4,934	2,709	35.4%	1,261	211	43	1,448	87.6%	53.5%	1,066	73.6%	178	204	85.9%	260	15.3%
Aug-09	7,696	5,109	2,587	33.6%	1,191	202	63	1,396	87.8%	54.0%	982	70.3%	229	185	86.7%	200	13.3%
Sep-09	6,956	4,586	2,370	34.1%	1,045	172	109	1,325	89.3%	55.9%	910	68.7%	245	170	87.2%	161	10.1%
Oct-09	8,099	5,388	2,711	33.5%	1,263	200	84	1,448	88.5%	53.4%	1,003	69.3%	250	195	86.5%	252	15.9%
Nov-09	6,880	4,415	2,465	35.8%	1,174	171	83	1,291	88.9%	52.4%	908	70.3%	207	176	86.4%	75	4.8%
Dec-09	13,304	10,321	2,983	22.4%	1,470	213	112	1,513	88.4%	50.7%	1,071	70.8%	213	229	84.9%	68	5.0%
Jan-10	18,964	15,484	3,480	18.4%	1,883	231	158	1,597	88.4%	45.9%	1,091	68.3%	282	224	86.0%	173	11.9%
Feb-10	17,444	14,122	3,322	19.0%	1,830	259	128	1,492	86.2%	44.9%	949	63.6%	290	253	83.0%	167	12.0%
Mar-10	19,875	16,063	3,812	19.2%	1,980	271	126	1,832	87.8%	48.1%	1,171	63.9%	353	308	83.2%	211	15.9%
Apr-10	21,806	18,011	3,795	17.4%	2,130	253	172	1,665	87.9%	43.9%	1,048	62.9%	366	251	84.9%	164	11.3%
May-10	20,029	15,967	4,062	20.3%	2,402	290	222	1,660	86.6%	40.9%	1,066	64.2%	368	226	86.4%	183	14.2%
Jun-10	23,143	18,911	4,232	18.3%	2,423	236	136	1,809	89.2%	42.7%	1,159	64.1%	395	255	85.9%	208	13.7%
Jul-10	26,169	21,545	4,624	17.7%	2,785	245	122	1,839	88.9%	39.8%	1,217	66.2%	358	264	85.6%	233	14.6%
Aug-10	26,509	22,079	4,430	16.7%	2,678	264	170	1,752	87.9%	39.5%	1,087	62.0%	324	341	80.5%	230	15.4%
Sep-10	25,114	20,901	4,213	16.8%	2,450	234	91	1,763	88.8%	41.8%	1,124	63.8%	285	354	79.9%	241	13.2%
Oct-10	22,973	19,195	3,778	16.4%	2,081	253	60	1,697	87.4%	44.9%	1,115	65.7%	255	327	80.7%	196	11.8%



Los Angeles County MTA - All
Performance Report
December 2013

	<u>Total Events</u>	<u>Non Violations</u>	<u>Potential Violations</u>	<u>Percent Citable</u>	<u>Non Issued Violations</u>	<u>No DMV Match</u>	<u>Police/ Client Rejected</u>	<u>Citations Issued</u>	<u>DMV Match Rate</u>	<u>Issuance Rate</u>	<u>Dispo Paid</u>	<u>Pay Rate</u>	<u>Closed No Pay</u>	<u>Pending</u>	<u>Closure Rate</u>	<u>Court Packs</u>	<u>Contest Rate</u>
Nov-10	22,675	18,837	3,838	16.9%	2,044	243	112	1,794	88.7%	46.7%	1,182	65.9%	251	361	79.9%	178	10.7%
Dec-10	24,246	20,416	3,830	15.8%	2,087	231	105	1,743	88.9%	45.5%	1,107	63.5%	301	335	80.8%	307	17.0%
Jan-11	22,435	19,285	3,150	14.0%	1,565	285	97	1,585	85.5%	50.3%	940	59.3%	356	289	81.8%	213	11.6%
Feb-11	22,450	19,494	2,956	13.2%	1,434	246	123	1,522	87.0%	51.5%	874	57.4%	340	308	79.8%	165	9.4%
Mar-11	24,668	21,045	3,623	14.7%	1,962	244	122	1,661	88.0%	45.8%	936	56.4%	365	360	78.3%	278	15.8%
Apr-11	23,982	20,286	3,696	15.4%	1,929	261	311	1,767	88.8%	47.8%	842	47.7%	540	385	78.2%	263	15.5%
May-11	24,903	20,881	4,022	16.2%	2,264	285	361	1,758	88.1%	43.7%	804	45.7%	504	450	74.4%	264	14.7%
Jun-11	23,760	20,173	3,587	15.1%	2,205	239	353	1,382	87.9%	38.5%	556	40.2%	341	485	64.9%	329	18.9%
Jul-11	22,037	18,472	3,565	16.2%	2,240	258	491	1,325	87.6%	37.2%	542	40.9%	263	520	60.8%	250	15.8%
Aug-11	20,859	17,076	3,783	18.1%	2,387	234	597	1,396	89.5%	36.9%	561	40.2%	297	538	61.5%	270	17.7%
Sep-11	19,749	15,994	3,755	19.0%	2,334	301	532	1,421	86.6%	37.8%	616	43.3%	258	547	61.5%	312	18.8%
Oct-11	21,554	17,487	4,067	18.9%	2,422	297	564	1,645	88.1%	40.4%	688	41.8%	325	632	61.6%	235	13.3%
Nov-11	19,418	16,023	3,395	17.5%	1,957	288	397	1,438	86.4%	42.4%	575	40.0%	277	586	59.2%	206	11.7%
Dec-11	23,765	19,911	3,854	16.2%	2,193	227	613	1,661	90.9%	43.1%	603	36.3%	445	613	63.1%	246	17.8%
Jan-12	24,970	20,717	4,253	17.0%	2,742	389	799	1,511	85.6%	35.5%	550	36.4%	349	612	59.5%	262	19.8%
Feb-12	25,957	20,696	5,261	20.3%	3,524	372	765	1,737	87.1%	33.0%	535	30.8%	467	735	57.7%	243	17.4%
Mar-12	26,496	21,107	5,389	20.3%	3,733	415	967	1,656	86.3%	30.7%	462	27.9%	470	724	56.3%	229	16.1%
Apr-12	26,592	21,160	5,432	20.4%	3,617	381	789	1,815	87.2%	33.4%	443	24.4%	614	758	58.2%	264	16.0%
May-12	27,635	21,911	5,724	20.7%	4,017	364	1,029	1,707	88.3%	29.8%	446	26.1%	490	771	54.8%	323	22.5%
Jun-12	21,960	17,440	4,520	20.6%	2,845	395	895	1,675	86.7%	37.1%	331	19.8%	535	809	51.7%	260	15.7%
Jul-12	25,172	20,763	4,409	17.5%	2,622	317	579	1,787	88.2%	40.5%	358	20.0%	531	898	49.7%	112	7.4%
Aug-12	25,866	20,688	5,178	20.0%	2,924	389	587	2,254	88.0%	43.5%	376	16.7%	740	1,138	49.5%	163	9.4%
Sep-12	25,703	20,781	4,922	19.1%	2,883	417	659	2,039	86.6%	41.4%	380	18.6%	636	1,023	49.8%	172	10.4%
Oct-12	44,185	33,625	10,560	23.9%	6,315	843	1,696	4,245	87.6%	40.2%	976	23.0%	1,257	2,012	52.6%	225	12.4%
Nov-12	37,365	28,397	8,968	24.0%	6,093	804	1,433	2,875	84.3%	32.1%	586	20.4%	851	1,438	50.0%	183	10.7%
Dec-12	34,573	26,764	7,809	22.6%	5,492	736	1,319	2,317	83.2%	29.7%	489	21.1%	636	1,192	48.6%	207	12.4%
Jan-13	34,528	27,197	7,331	21.2%	3,990	558	1,254	3,341	89.2%	45.6%	538	16.1%	1,120	1,683	49.6%	347	19.4%
Feb-13	33,168	26,707	6,461	19.5%	3,785	466	1,198	2,676	89.3%	41.4%	503	18.8%	787	1,386	48.2%	403	17.9%
Mar-13	39,294	32,356	6,938	17.7%	4,116	505	1,118	2,822	88.6%	40.7%	579	20.5%	819	1,424	49.5%	496	24.3%
Apr-13	35,601	29,077	6,524	18.3%	3,854	520	1,043	2,670	87.7%	40.9%	530	19.9%	747	1,393	47.8%	430	10.1%
May-13	44,673	37,684	6,989	15.6%	4,106	468	1,411	2,883	90.2%	41.3%	518	18.0%	703	1,662	42.4%	565	19.7%
Jun-13	35,097	28,711	6,386	18.2%	3,875	459	1,282	2,511	89.2%	39.3%	451	18.0%	506	1,554	38.1%	448	19.3%
Jul-13	35,193	27,882	7,311	20.8%	4,764	510	1,505	2,547	88.8%	34.8%	416	16.3%	458	1,673	34.3%	431	12.9%
Aug-13	36,622	28,222	8,400	22.9%	5,445	671	1,689	2,955	87.4%	35.2%	377	12.8%	582	1,996	32.5%	377	14.1%
Sep-13	36,152	27,121	9,031	25.0%	6,096	754	2,359	2,935	87.5%	32.5%	260	8.9%	440	2,235	23.9%	550	19.5%
Oct-13	38,814	29,628	9,186	23.7%	5,635	694	1,987	3,551	88.9%	38.7%	118	3.3%	70	3,363	5.3%	562	21.0%
Nov-13	32,805	24,902	7,903	24.1%	4,582	634	1,560	3,321	88.5%	42.0%	7	0.2%	24	3,290	0.9%	441	15.3%
Dec-13	34,469	26,512	7,957	23.1%	5,134	648	1,726	2,823	87.5%	35.5%	0	0.0%	0	2,823	0.0%	530	21.1%
Total	1,828,942	1,396,143	432,799	23.7%	244,331	31,703	39,302	188,468	87.8%	43.5%	99,359	57.3%	31,561	57,548	74.5%	23,024	15.1%

* Pay Rate and Closure Rate percentages are based on a 4 month lag

** Contested Citations Data Available from January 2006 to present

*** Contested Citations take into account a 6 month lag from the violation date to the trail date.



**Los Angeles County MTA - Blue Line
Performance Report
December 2013**

	<u>Total Events</u>	<u>Non Violations</u>	<u>Potential Violations</u>	<u>Percent Citable</u>	<u>Non Issued Violations</u>	<u>No DMV Match</u>	<u>Police/ Client Rejected</u>	<u>Citations Issued</u>	<u>DMV Match Rate</u>	<u>Issuance Rate</u>	<u>Dispo Paid</u>	<u>Pay Rate</u>	<u>Closed No Pay</u>	<u>Pending</u>	<u>Closure Rate</u>	<u>Court Packs</u>	<u>Contest Rate</u>
Jan-04	5,235	4,080	1,155	22.1%	420	11	1	735	98.5%	63.6%	541	73.6%	43	151	79.5%	-	-
Feb-04	4,775	3,564	1,211	25.4%	450	13	6	761	98.3%	62.8%	562	73.9%	53	146	80.8%	-	-
Mar-04	5,478	4,052	1,426	26.0%	637	20	3	789	97.5%	55.3%	569	72.1%	47	173	78.1%	-	-
Apr-04	4,159	2,638	1,521	36.6%	788	20	6	733	97.4%	48.2%	551	75.2%	50	132	82.0%	-	-
May-04	4,008	2,442	1,566	39.1%	595	24	4	971	97.6%	62.0%	684	70.4%	66	221	77.2%	-	-
Jun-04	3,563	2,232	1,331	37.4%	729	22	2	602	96.5%	45.2%	421	69.9%	45	136	77.4%	-	-
Jul-04	3,772	2,425	1,347	35.7%	532	19	4	815	97.7%	60.5%	582	71.4%	64	169	79.3%	-	-
Aug-04	3,476	2,270	1,206	34.7%	696	28	12	510	94.9%	42.3%	366	71.8%	39	105	79.4%	-	-
Sep-04	3,701	2,417	1,284	34.7%	823	22	6	461	95.5%	35.9%	340	73.8%	33	88	80.9%	-	-
Oct-04	3,497	2,260	1,237	35.4%	549	15	3	688	97.9%	55.6%	487	70.8%	66	135	80.4%	-	-
Nov-04	3,218	2,056	1,162	36.1%	467	20	15	695	97.3%	59.8%	500	71.9%	46	149	78.6%	-	-
Dec-04	3,843	2,736	1,107	28.8%	590	15	14	517	97.3%	46.7%	375	72.5%	49	93	82.0%	-	-
Jan-05	3,656	2,621	1,035	28.3%	456	15	41	579	97.6%	55.9%	421	72.7%	39	119	79.4%	-	-
Feb-05	3,200	2,207	993	31.0%	440	9	27	553	98.5%	55.7%	404	73.1%	43	106	80.8%	-	-
Mar-05	3,156	2,116	1,040	33.0%	454	26	29	586	95.9%	56.3%	435	74.2%	49	102	82.6%	-	-
Apr-05	3,688	2,383	1,305	35.4%	755	126	32	550	82.2%	42.1%	404	73.5%	49	97	82.4%	-	-
May-05	3,617	2,390	1,227	33.9%	618	117	24	609	84.4%	49.6%	442	72.6%	52	115	81.1%	-	-
Jun-05	3,871	2,719	1,152	29.8%	650	114	41	502	82.6%	43.6%	351	69.9%	39	112	77.7%	-	-
Jul-05	3,507	2,277	1,230	35.1%	538	111	0	692	86.2%	56.3%	457	66.0%	105	130	81.2%	-	-
Aug-05	3,711	2,481	1,230	33.1%	675	142	19	555	80.2%	45.1%	396	71.4%	47	112	79.8%	-	-
Sep-05	3,855	2,629	1,226	31.8%	562	125	8	664	84.3%	54.2%	475	71.5%	50	139	79.1%	-	-
Oct-05	4,897	3,728	1,169	23.9%	566	97	18	603	86.5%	51.6%	421	69.8%	61	121	79.9%	-	-
Nov-05	4,956	3,785	1,171	23.6%	633	105	16	538	84.1%	45.9%	399	74.2%	36	103	80.9%	-	-
Dec-05	4,919	3,937	982	20.0%	529	116	26	453	80.5%	46.1%	346	76.4%	36	71	84.3%	-	-
Jan-06	4,752	3,726	1,026	21.6%	558	98	30	468	83.6%	45.6%	348	74.4%	39	81	82.7%	70	10.1%
Feb-06	4,929	3,808	1,121	22.7%	657	97	33	464	83.7%	41.4%	338	72.8%	35	91	80.4%	39	7.0%
Mar-06	5,620	4,412	1,208	21.5%	710	110	72	498	83.8%	41.2%	347	69.7%	57	94	81.1%	45	6.8%
Apr-06	5,159	4,084	1,075	20.8%	572	126	30	503	80.9%	46.8%	368	73.2%	53	82	83.7%	66	10.9%
May-06	4,914	3,801	1,113	22.6%	566	124	26	547	82.2%	49.1%	397	72.6%	57	93	83.0%	68	12.6%
Jun-06	4,855	3,834	1,021	21.0%	531	153	17	490	76.8%	48.0%	366	74.7%	39	85	82.7%	49	10.8%
Jul-06	4,835	3,620	1,215	25.1%	647	108	40	568	84.9%	46.7%	396	69.7%	60	112	80.3%	40	8.5%
Aug-06	4,677	3,572	1,105	23.6%	820	123	19	285	71.2%	25.8%	197	69.1%	28	60	78.9%	62	13.4%
Sep-06	4,487	3,396	1,091	24.3%	702	115	21	389	78.1%	35.7%	265	68.1%	48	76	80.5%	53	10.6%
Oct-06	7,566	6,244	1,322	17.5%	913	181	27	409	70.7%	30.9%	303	74.1%	23	83	79.7%	52	10.3%
Nov-06	5,897	4,690	1,207	20.5%	706	112	52	501	83.2%	41.5%	359	71.7%	49	93	81.4%	42	7.7%
Dec-06	5,891	4,671	1,220	20.7%	697	128	78	523	82.4%	42.9%	378	72.3%	36	109	79.2%	71	14.5%



Los Angeles County MTA - Blue Line Performance Report December 2013

	<u>Total Events</u>	<u>Non Violations</u>	<u>Potential Violations</u>	<u>Percent Citable</u>	<u>Non Issued Violations</u>	<u>No DMV Match</u>	<u>Police/ Client Rejected</u>	<u>Citations Issued</u>	<u>DMV Match Rate</u>	<u>Issuance Rate</u>	<u>Dispo Paid</u>	<u>Pay Rate</u>	<u>Closed No Pay</u>	<u>Pending</u>	<u>Closure Rate</u>	<u>Court Packs</u>	<u>Contest Rate</u>
Jan-07	5,244	4,035	1,209	23.1%	822	129	63	387	77.7%	32.0%	277	71.6%	38	72	81.4%	40	7.0%
Feb-07	4,897	3,777	1,120	22.9%	913	140	61	207	65.7%	18.5%	154	74.4%	17	36	82.6%	65	22.8%
Mar-07	5,936	4,506	1,430	24.1%	967	191	90	463	74.3%	32.4%	326	70.4%	52	85	81.6%	40	10.3%
Apr-07	5,139	4,237	902	17.6%	595	111	88	307	78.1%	34.0%	202	65.8%	57	48	84.4%	91	22.2%
May-07	1,148	471	677	59.0%	270	100	76	407	82.8%	60.1%	291	71.5%	30	86	78.9%	50	10.0%
Jun-07	3,802	2,589	1,213	31.9%	955	125	85	258	73.3%	21.3%	180	69.8%	14	64	75.2%	57	10.9%
Jul-07	3,417	2,250	1,167	34.2%	932	116	96	235	74.0%	20.1%	148	63.0%	20	67	71.5%	40	10.3%
Aug-07	4,301	3,151	1,150	26.7%	861	130	66	289	73.2%	25.1%	194	67.1%	23	72	75.1%	98	47.3%
Sep-07	3,904	3,069	835	21.4%	588	104	56	247	74.4%	29.6%	145	58.7%	21	81	67.2%	40	8.6%
Oct-07	6,157	5,056	1,101	17.9%	771	100	43	330	78.9%	30.0%	184	55.8%	41	105	68.2%	53	17.3%
Nov-07	7,367	6,035	1,332	18.1%	913	115	2	419	78.5%	31.5%	172	41.1%	160	87	79.2%	44	10.8%
Dec-07	5,880	4,659	1,221	20.8%	869	122	0	352	74.3%	28.8%	160	45.5%	118	74	79.0%	48	18.6%
Jan-08	6,059	5,047	1,012	16.7%	679	112	0	333	74.8%	32.9%	208	62.5%	81	44	86.8%	41	17.4%
Feb-08	7,348	6,296	1,052	14.3%	695	122	1	357	74.6%	33.9%	211	59.1%	87	59	83.5%	60	20.8%
Mar-08	6,761	5,525	1,236	18.3%	890	110	2	346	76.0%	28.0%	189	54.6%	95	62	82.1%	33	13.4%
Apr-08	6,259	4,964	1,295	20.7%	1,025	94	0	270	74.2%	20.8%	182	67.4%	45	43	84.1%	57	17.3%
May-08	6,273	5,174	1,099	17.5%	906	63	2	193	75.6%	17.6%	119	61.7%	42	32	83.4%	50	11.9%
Jun-08	5,517	4,350	1,167	21.2%	957	74	0	210	73.9%	18.0%	131	62.4%	40	39	81.4%	41	11.6%
Jul-08	5,736	4,740	996	17.4%	745	74	3	251	77.4%	25.2%	171	68.1%	38	42	83.3%	41	12.3%
Aug-08	5,001	3,982	1,019	20.4%	687	91	2	332	78.6%	32.6%	201	60.5%	76	55	83.4%	23	6.4%
Sep-08	5,049	4,204	845	16.7%	514	77	1	331	81.2%	39.2%	194	58.6%	79	58	82.5%	48	13.9%
Oct-08	5,045	4,313	732	14.5%	451	59	0	281	82.6%	38.4%	147	52.3%	53	81	71.2%	44	16.3%
Nov-08	4,824	4,190	634	13.1%	339	65	0	295	81.9%	46.5%	164	55.6%	61	70	76.3%	41	21.2%
Dec-08	5,295	4,552	743	14.0%	391	70	0	352	83.4%	47.4%	163	46.3%	144	45	87.2%	30	14.3%
Jan-09	4,838	4,178	660	13.6%	377	68	0	283	80.6%	42.9%	138	48.8%	92	53	81.3%	42	16.7%
Feb-09	4,965	4,299	666	13.4%	354	61	1	312	83.7%	46.8%	182	58.3%	69	61	80.4%	31	9.3%
Mar-09	5,197	4,390	807	15.5%	525	70	2	282	80.2%	34.9%	174	61.7%	50	58	79.4%	43	13.0%
Apr-09	5,448	4,301	1,147	21.1%	782	23	2	365	94.1%	31.8%	169	46.3%	135	61	83.3%	52	18.5%
May-09	4,847	4,078	769	15.9%	445	92	0	324	77.9%	42.1%	172	53.1%	95	57	82.4%	43	14.6%
Jun-09	4,247	3,588	659	15.5%	394	54	2	265	83.2%	40.2%	134	50.6%	83	48	81.9%	73	20.7%
Jul-09	4,226	3,533	693	16.4%	432	64	1	261	80.4%	37.7%	144	55.2%	62	55	78.9%	35	12.4%
Aug-09	4,471	3,814	657	14.7%	387	60	1	270	81.9%	41.1%	130	48.1%	84	56	79.3%	32	10.3%
Sep-09	3,864	3,282	582	15.1%	345	53	18	237	82.8%	40.7%	113	47.7%	84	40	83.1%	9	3.2%
Oct-09	4,644	4,002	642	13.8%	388	75	2	254	77.3%	39.6%	120	47.2%	89	45	82.3%	36	9.9%
Nov-09	3,626	3,082	544	15.0%	359	53	12	185	78.8%	34.0%	97	52.4%	51	37	80.0%	41	12.7%
Dec-09	4,139	3,511	628	15.2%	361	49	8	267	84.9%	42.5%	157	58.8%	55	55	79.4%	33	12.5%



Los Angeles County MTA - Blue Line
Performance Report
December 2013

	<u>Total</u> <u>Events</u>	<u>Non</u> <u>Violations</u>	<u>Potential</u> <u>Violations</u>	<u>Percent</u> <u>Citable</u>	<u>Non Issued</u> <u>Violations</u>	<u>No DMV</u> <u>Match</u>	<u>Police/</u> <u>Client</u> <u>Rejected</u>	<u>Citations</u> <u>Issued</u>	<u>DMV</u> <u>Match</u> <u>Rate</u>	<u>Issuance</u> <u>Rate</u>	<u>Dispo</u> <u>Paid</u>	<u>Pay</u> <u>Rate</u>	<u>Closed</u> <u>No Pay</u>	<u>Pending</u>	<u>Closure</u> <u>Rate</u>	<u>Court</u> <u>Packs</u>	<u>Contest</u> <u>Rate</u>
Jan-10	3,822	3,255	567	14.8%	346	38	33	221	87.0%	39.0%	135	61.1%	35	51	76.9%	25	9.6%
Feb-10	3,063	2,321	742	24.2%	444	80	22	298	80.0%	40.2%	191	64.1%	39	68	77.2%	19	7.0%
Mar-10	3,392	2,601	791	23.3%	474	91	27	317	79.1%	40.1%	190	59.9%	43	84	73.5%	9	3.8%
Apr-10	3,685	2,935	750	20.4%	493	55	67	257	85.5%	34.3%	143	55.6%	62	52	79.8%	12	4.7%
May-10	3,465	2,732	733	21.2%	507	66	59	226	81.2%	30.8%	125	55.3%	50	51	77.4%	35	18.9%
Jun-10	3,312	2,531	781	23.6%	472	46	45	309	88.5%	39.6%	174	56.3%	77	58	81.2%	28	10.5%
Jul-10	2,783	2,107	676	24.3%	432	57	34	244	83.0%	36.1%	154	63.1%	46	44	82.0%	18	8.1%
Aug-10	3,492	2,687	805	23.1%	510	65	62	295	84.6%	36.6%	152	51.5%	72	71	75.9%	34	11.4%
Sep-10	2,612	1,985	627	24.0%	382	50	22	245	84.2%	39.1%	125	51.0%	48	72	70.6%	39	12.3%
Oct-10	2,746	2,105	641	23.3%	365	56	12	276	83.7%	43.1%	169	61.2%	45	62	77.5%	33	12.8%
Nov-10	2,802	2,146	656	23.4%	419	51	51	237	85.0%	36.1%	114	48.1%	58	65	72.6%	14	6.2%
Dec-10	2,787	2,130	657	23.6%	411	68	25	246	79.9%	37.4%	120	48.8%	57	69	72.0%	45	14.6%
Jan-11	2,780	2,163	617	22.2%	364	73	20	253	78.9%	41.0%	106	41.9%	93	54	78.7%	35	14.3%
Feb-11	2,705	2,157	548	20.3%	310	74	20	238	77.7%	43.4%	112	47.1%	63	63	73.5%	32	10.8%
Mar-11	2,710	2,008	702	25.9%	440	62	13	262	81.6%	37.3%	96	36.6%	88	78	70.2%	23	9.4%
Apr-11	2,937	2,223	714	24.3%	457	74	88	257	82.3%	36.0%	95	37.0%	95	67	73.9%	36	13.0%
May-11	3,285	2,527	758	23.1%	529	56	105	229	85.6%	30.2%	89	38.9%	70	70	69.4%	29	12.2%
Jun-11	3,064	2,366	698	22.8%	522	60	70	176	80.4%	25.2%	49	27.8%	61	66	62.5%	34	13.8%
Jul-11	3,619	2,989	630	17.4%	479	50	101	151	83.4%	24.0%	41	27.2%	37	73	51.7%	36	14.2%
Aug-11	5,913	5,027	886	15.0%	678	71	147	208	83.3%	23.5%	56	26.9%	54	98	52.9%	29	12.2%
Sep-11	4,528	3,781	747	16.5%	549	58	110	198	84.2%	26.5%	56	28.3%	49	93	53.0%	25	9.5%
Oct-11	4,646	3,843	803	17.3%	572	65	115	231	84.2%	28.8%	44	19.0%	67	120	48.1%	25	9.7%
Nov-11	4,075	3,384	691	17.0%	501	52	66	190	83.1%	27.5%	25	13.2%	53	112	41.1%	13	5.7%
Dec-11	5,073	4,281	792	15.6%	570	57	118	222	85.6%	28.0%	19	8.6%	109	94	57.7%	33	18.8%
Jan-12	4,336	3,602	734	16.9%	563	76	116	171	79.1%	23.3%	13	7.6%	86	72	57.9%	30	19.9%
Feb-12	5,520	4,191	1,329	24.1%	1,118	77	119	211	81.1%	15.9%	4	1.9%	109	98	53.6%	32	15.4%
Mar-12	4,908	3,721	1,187	24.2%	1,006	91	158	181	78.8%	15.2%	7	3.9%	98	76	58.0%	22	11.1%
Apr-12	5,137	3,831	1,306	25.4%	1,087	91	164	219	80.8%	16.8%	4	1.8%	128	87	60.3%	27	11.7%
May-12	5,018	3,703	1,315	26.2%	1,194	68	121	121	78.1%	9.2%	2	1.7%	69	50	58.7%	38	20.0%
Jun-12	4,419	3,417	1,002	22.7%	830	76	116	172	79.1%	17.2%	1	0.6%	90	81	52.9%	32	14.4%
Jul-12	5,102	4,210	892	17.5%	730	73	102	162	78.3%	18.2%	3	1.9%	81	78	51.9%	18	10.5%
Aug-12	4,922	3,990	932	18.9%	679	75	107	253	82.8%	27.1%	6	2.4%	129	118	53.4%	24	11.4%
Sep-12	4,648	3,764	884	19.0%	673	99	128	211	77.4%	23.9%	2	0.9%	111	98	53.6%	30	16.6%
Oct-12	4,914	4,046	868	17.7%	647	93	165	221	80.6%	25.5%	8	3.6%	99	114	48.4%	29	13.2%
Nov-12	5,347	4,539	808	15.1%	629	80	131	179	79.5%	22.2%	3	1.7%	74	102	43.0%	18	14.9%
Dec-12	4,761	4,192	569	12.0%	420	63	74	149	78.0%	26.2%	4	2.7%	65	80	46.3%	22	12.8%



Los Angeles County MTA - Blue Line
Performance Report
December 2013

	<u>Total</u> <u>Events</u>	<u>Non</u> <u>Violations</u>	<u>Potential</u> <u>Violations</u>	<u>Percent</u> <u>Citable</u>	<u>Non Issued</u> <u>Violations</u>	<u>No DMV</u> <u>Match</u>	<u>Police/</u> <u>Client</u> <u>Rejected</u>	<u>Citations</u> <u>Issued</u>	<u>DMV</u> <u>Match</u> <u>Rate</u>	<u>Issuance</u> <u>Rate</u>	<u>Dispo</u> <u>Paid</u>	<u>Pay</u> <u>Rate</u>	<u>Closed</u> <u>No Pay</u>	<u>Pending</u>	<u>Closure</u> <u>Rate</u>	<u>Court</u> <u>Packs</u>	<u>Contest</u> <u>Rate</u>
Jan-13	5,007	4,289	718	14.3%	511	77	106	207	80.3%	28.8%	2	1.0%	80	125	39.6%	30	18.5%
Feb-13	4,694	3,950	744	15.9%	579	61	137	165	83.2%	22.2%	10	6.1%	72	83	49.7%	23	9.1%
Mar-13	5,883	4,993	890	15.1%	730	78	167	160	80.7%	18.0%	9	5.6%	67	84	47.5%	37	17.5%
Apr-13	5,733	4,969	764	13.3%	598	88	160	166	78.7%	21.7%	6	3.6%	70	90	45.8%	24	10.9%
May-13	5,883	5,101	782	13.3%	635	83	170	147	79.3%	18.8%	5	3.4%	59	83	43.5%	40	22.3%
Jun-13	5,378	4,699	679	12.6%	568	58	146	111	81.6%	16.3%	15	13.5%	39	57	48.6%	29	19.5%
Jul-13	6,022	5,156	866	14.4%	731	81	205	135	80.8%	15.6%	18	13.3%	26	91	32.6%	32	15.5%
Aug-13	5,845	5,056	789	13.5%	662	74	158	127	79.4%	16.1%	19	15.0%	13	95	25.2%	33	20.0%
Sep-13	5,387	4,546	841	15.6%	732	71	201	109	81.4%	13.0%	8	7.3%	21	80	26.6%	74	46.3%
Oct-13	6,346	5,424	922	14.5%	727	84	179	195	81.7%	21.1%	11	5.6%	15	169	13.3%	55	33.1%
Nov-13	5,369	4,558	811	15.1%	621	75	148	190	81.8%	23.4%	0	0.0%	0	190	0.0%	46	31.3%
Dec-13	5,119	4,341	778	15.2%	612	105	122	166	73.3%	21.3%	0	0.0%	0	166	0.0%	30	27.0%
Total	549,205	434,105	115,100	20.96%	73,623	9,395	6,420	41,477	83.60%	36.04%	23,974	58.8%	7,184	10,319	76.4%	3,738	14.13%

* Pay Rate and Closure Rate percentages are based on a 4 month lag

** Contested Citations Data Available from January 2006 to present

*** Contested Citations take into account a 6 month lag from the violation date to the trail date.



Los Angeles County MTA - Gold Line
Performance Report
December 2013

	<u>Total</u> <u>Events</u>	<u>Non</u> <u>Violations</u>	<u>Potential</u> <u>Violations</u>	<u>Percent</u> <u>Citable</u>	<u>Non Issued</u> <u>Violations</u>	<u>No DMV</u> <u>Match</u>	<u>Police/</u> <u>Client</u> <u>Rejected</u>	<u>Citations</u> <u>Issued</u>	<u>DMV</u> <u>Match</u> <u>Rate</u>	<u>Issuance</u> <u>Rate</u>	<u>Dispo</u> <u>Paid</u>	<u>Pay</u> <u>Rate</u>	<u>Closed</u> <u>No Pay</u>	<u>Pending</u>	<u>Closure</u> <u>Rate</u>	<u>Court</u> <u>Packs</u>	<u>Contest</u> <u>Rate</u>
Dec-09	5,805	5,387	418	7.2%	258	29	14	160	85.7%	38.3%	91	56.9%	34	35	78.1%	0	-
Jan-10	12,371	11,195	1,176	9.5%	843	65	40	333	85.2%	28.3%	158	47.4%	124	51	84.7%	0	-
Feb-10	11,564	10,651	913	7.9%	604	58	19	309	85.0%	33.8%	148	47.9%	119	42	86.4%	0	-
Mar-10	13,350	12,264	1,086	8.1%	739	79	26	347	82.5%	32.0%	157	45.2%	131	59	83.0%	0	-
Apr-10	14,976	13,798	1,178	7.9%	809	68	46	369	85.9%	31.3%	153	41.5%	162	54	85.4%	4	-
May-10	13,007	11,845	1,162	8.9%	855	70	38	307	83.1%	26.4%	140	45.6%	124	43	86.0%	3	-
Jun-10	13,058	11,782	1,276	9.8%	895	66	72	381	87.3%	29.9%	169	44.4%	163	49	87.1%	4	4.4%
Jul-10	13,229	11,896	1,333	10.1%	1000	62	78	333	86.9%	25.0%	138	41.4%	143	52	84.4%	26	16.5%
Aug-10	13,811	12,469	1,342	9.7%	1053	83	70	289	81.2%	21.5%	116	40.1%	124	49	83.0%	0	0.0%
Sep-10	14,099	12,605	1,494	10.6%	1090	69	40	404	86.5%	27.0%	217	53.7%	116	71	82.4%	2	1.3%
Oct-10	12,325	11,102	1,223	9.9%	882	75	27	341	83.1%	27.9%	168	49.3%	101	72	78.9%	3	2.0%
Nov-10	12,575	11,261	1,314	10.4%	922	72	49	392	86.0%	29.8%	203	51.8%	105	84	78.6%	16	11.4%
Dec-10	14,143	12,889	1,254	8.9%	933	61	20	321	84.8%	25.6%	157	48.9%	106	58	81.9%	84	49.7%
Jan-11	12,708	11,805	903	7.1%	565	78	16	338	81.9%	37.4%	142	42.0%	149	47	86.1%	38	27.5%
Feb-11	12,856	11,969	887	6.9%	559	72	16	328	82.7%	37.0%	131	39.9%	143	54	83.5%	27	23.3%
Mar-11	14,005	12,975	1,030	7.4%	709	64	21	321	84.2%	31.2%	153	47.7%	106	62	80.7%	23	10.6%
Apr-11	13,373	12,307	1,066	8.0%	719	82	102	347	84.6%	32.6%	160	46.1%	107	80	76.9%	39	23.2%
May-11	13,666	12,487	1,179	8.6%	814	104	112	365	82.1%	31.0%	150	41.1%	118	97	73.4%	35	17.2%
Jun-11	12,946	11,982	964	7.4%	672	82	104	292	82.8%	30.3%	111	38.0%	71	110	62.3%	43	27.4%
Jul-11	11,546	10,599	947	8.2%	667	71	135	280	85.4%	29.6%	101	36.1%	75	104	62.9%	62	43.7%
Aug-11	9,015	8,185	830	9.2%	554	33	127	276	92.4%	33.3%	111	40.2%	79	86	68.8%	55	42.0%
Sep-11	9,303	8,386	917	9.9%	686	104	125	231	77.4%	25.2%	116	50.2%	39	76	67.1%	43	28.1%
Oct-11	10,383	9,500	883	8.5%	669	61	120	214	84.6%	24.2%	100	46.7%	41	73	65.9%	36	22.5%
Nov-11	9,455	8,859	596	6.3%	410	63	92	186	81.5%	31.2%	64	34.4%	37	85	54.3%	43	28.7%
Dec-11	12,822	11,973	849	6.6%	605	64	141	244	85.7%	28.7%	81	33.2%	44	119	51.2%	27	24.3%



Los Angeles County MTA - Gold Line
Performance Report
December 2013

	<u>Total</u> <u>Events</u>	<u>Non</u> <u>Violations</u>	<u>Potential</u> <u>Violations</u>	<u>Percent</u> <u>Citable</u>	<u>Non Issued</u> <u>Violations</u>	<u>No DMV</u> <u>Match</u>	<u>Police/</u> <u>Client</u> <u>Rejected</u>	<u>Citations</u> <u>Issued</u>	<u>DMV</u> <u>Match</u> <u>Rate</u>	<u>Issuance</u> <u>Rate</u>	<u>Dispo</u> <u>Paid</u>	<u>Pay</u> <u>Rate</u>	<u>Closed</u> <u>No Pay</u>	<u>Pending</u>	<u>Closure</u> <u>Rate</u>	<u>Court</u> <u>Packs</u>	<u>Contest</u> <u>Rate</u>
Jan-12	10,553	9,795	758	7.2%	592	60	111	166	82.2%	21.9%	61	36.7%	50	55	66.9%	35	34.7%
Feb-12	8,612	7,696	916	10.6%	696	73	124	220	82.5%	24.0%	74	33.6%	61	85	61.4%	28	25.2%
Mar-12	9,115	8,201	914	10.0%	743	82	125	171	78.3%	18.7%	56	32.7%	47	68	60.2%	20	17.2%
Apr-12	9,037	8,236	801	8.9%	617	69	92	184	80.0%	23.0%	55	29.9%	55	74	59.8%	46	46.0%
May-12	9,202	8,355	847	9.2%	676	71	128	171	80.8%	20.2%	49	28.7%	55	67	60.8%	49	76.6%
Jun-12	8,007	7,372	635	7.9%	422	63	111	213	83.7%	33.5%	39	18.3%	55	119	44.1%	24	37.5%
Jul-12	9,645	8,903	742	7.7%	508	60	83	234	84.1%	31.5%	58	24.8%	63	113	51.7%	31	48.4%
Aug-12	10,021	9,172	849	8.5%	570	78	84	279	82.3%	32.9%	73	26.2%	85	121	56.6%	37	57.8%
Sep-12	9,192	8,486	706	7.7%	474	100	97	232	76.7%	32.9%	47	20.3%	72	113	51.3%	30	46.9%
Oct-12	9,961	9,186	775	7.8%	481	101	66	294	78.1%	37.9%	59	20.1%	105	130	55.8%	51	79.7%
Nov-12	8,916	8,280	636	7.1%	455	88	40	181	71.5%	28.5%	41	22.7%	47	93	48.6%	37	57.8%
Dec-12	8,392	7,857	535	6.4%	404	74	46	131	70.5%	24.5%	33	25.2%	33	65	50.4%	35	31.5%
Jan-13	8,216	7,631	585	7.1%	364	73	61	221	79.4%	37.8%	44	19.9%	72	105	52.5%	64	55.2%
Feb-13	8,254	7,562	692	8.4%	426	79	70	266	81.0%	38.4%	67	25.2%	65	134	49.6%	40	40.0%
Mar-13	9,445	8,677	768	8.1%	509	98	71	259	77.1%	33.7%	67	25.9%	74	118	54.4%	54	84.4%
Apr-13	9,469	8,692	777	8.2%	552	92	91	225	77.5%	29.0%	63	28.0%	30	132	41.3%	43	43.0%
May-13	10,045	9,333	712	7.1%	492	80	86	220	79.3%	30.9%	44	20.0%	40	136	38.2%	57	89.1%
Jun-13	6,223	5,781	442	7.1%	250	51	56	192	82.9%	43.4%	43	22.4%	20	129	32.8%	19	29.7%
Jul-13	8,808	8,179	629	7.1%	464	76	95	165	77.4%	26.2%	29	17.6%	13	123	25.5%	20	18.0%
Aug-13	9,858	8,989	869	8.8%	693	101	116	176	74.3%	20.3%	28	15.9%	8	140	20.5%	17	14.7%
Sep-13	9,597	8,760	837	8.7%	648	113	173	189	76.2%	22.6%	16	8.5%	24	149	21.2%	17	17.0%
Oct-13	10,019	9,183	836	8.3%	630	92	88	206	76.2%	24.6%	3	1.5%	1	202	1.9%	33	51.6%
Nov-13	8,332	7,815	517	6.2%	319	77	68	198	77.6%	38.3%	0	0.0%	0	198	0.0%	35	54.7%
Dec-13	9,083	8,503	580	6.4%	442	76	100	138	75.8%	23.8%	0	0.0%	0	138	0.0%	56	69.1%
Total	565,149	480,815	43,578	14.9%	30,939	3,662	3,832	12,639	81.8%	29.0%	4,484	37.8%	3,636	4,519	68.5%	1491	35.57%

* Pay Rate and Closure Rate percentages are based on a 4 month lag

** Contested Citations Data Available from December 2009 to present

*** Contested Citations take into account a 6 month lag from the violation date to the trail date.



**Los Angeles County MTA - Orange Line
Performance Report
December 2013**

	<u>Total</u> <u>Events</u>	<u>Non</u> <u>Violations</u>	<u>Potential</u> <u>Violations</u>	<u>Percent</u> <u>Citable</u>	<u>Non Issued</u> <u>Violations</u>	<u>No DMV</u> <u>Match</u>	<u>Police/</u> <u>Client</u> <u>Rejected</u>	<u>Citations</u> <u>Issued</u>	<u>DMV</u> <u>Match</u> <u>Rate</u>	<u>Issuance</u> <u>Rate</u>	<u>Dispo</u> <u>Paid</u>	<u>Pay</u> <u>Rate</u>	<u>Closed</u> <u>No Pay</u>	<u>Pending</u>	<u>Closure</u> <u>Rate</u>	<u>Court</u> <u>Packs</u>	<u>Contest</u> <u>Rate</u>
Aug-06	3,854	864	2,990	77.6%	2,735	45	20	255	85.9%	8.5%	206	80.8%	20	29	88.6%	0	-
Sep-06	4,212	934	3,278	77.8%	1,562	199	23	1,716	89.7%	52.3%	1,393	81.2%	141	182	89.4%	0	-
Oct-06	3,855	788	3,067	79.6%	1,069	225	27	1,998	90.0%	65.1%	1,599	80.0%	188	211	89.4%	36	-
Nov-06	12,589	8,872	3,717	29.5%	2,186	169	27	1,531	90.2%	41.2%	1,215	79.4%	124	192	87.5%	75	-
Dec-06	13,009	9,452	3,557	27.3%	1,792	190	16	1,765	90.4%	49.6%	1,417	80.3%	141	207	88.3%	99	-
Jan-07	9,820	6,557	3,263	33.2%	1,376	185	29	1,887	91.2%	57.8%	1,483	78.6%	142	262	86.1%	158	-
Feb-07	6,746	3,641	3,105	46.0%	1,180	255	15	1,925	88.4%	62.0%	1,508	78.3%	166	251	87.0%	154	-
Mar-07	5,452	2,081	3,371	61.8%	1,261	318	17	2,110	87.0%	62.6%	1,716	81.3%	158	236	88.8%	105	41.2%
Apr-07	5,235	2,116	3,119	59.6%	1,080	283	35	2,039	88.0%	65.4%	1,643	80.6%	136	260	87.2%	224	13.1%
May-07	4,735	1,643	3,092	65.3%	1,005	268	37	2,087	88.8%	67.5%	1,621	77.7%	146	320	84.7%	176	8.8%
Jun-07	5,004	1,725	3,279	65.5%	1,147	288	36	2,132	88.3%	65.0%	1,659	77.8%	149	324	84.8%	231	15.1%
Jul-07	5,396	1,906	3,490	64.7%	1,919	273	43	1,571	85.5%	45.0%	1,173	74.7%	117	281	82.1%	292	16.5%
Aug-07	5,664	2,259	3,405	60.1%	1,507	321	131	1,898	86.3%	55.7%	1,386	73.0%	139	373	80.3%	357	18.9%
Sep-07	4,021	1,247	2,774	69.0%	1,111	245	99	1,663	87.8%	59.9%	1,146	68.9%	128	389	76.6%	238	12.4%
Oct-07	4,952	1,811	3,141	63.4%	1,469	215	193	1,672	89.7%	53.2%	1,141	68.2%	151	380	77.3%	335	15.9%
Nov-07	4,676	1,810	2,866	61.3%	1,201	180	151	1,665	91.0%	58.1%	1,124	67.5%	158	383	77.0%	272	13.3%
Dec-07	4,466	1,783	2,683	60.1%	1,269	207	191	1,414	88.6%	52.7%	995	70.4%	146	273	80.7%	284	13.6%
Jan-08	4,150	1,651	2,499	60.2%	1,142	188	166	1,357	89.0%	54.3%	1,117	82.3%	100	140	89.7%	243	11.4%
Feb-08	3,875	1,446	2,429	62.7%	1,245	157	206	1,184	89.9%	48.7%	947	80.0%	110	127	89.3%	218	13.9%
Mar-08	4,696	1,887	2,809	59.8%	1,570	169	148	1,239	89.1%	44.1%	998	80.5%	87	154	87.6%	239	12.6%
Apr-08	4,417	1,835	2,582	58.5%	1,297	134	72	1,285	91.0%	49.8%	1,019	79.3%	100	166	87.1%	231	13.9%
May-08	4,764	1,847	2,917	61.2%	1,642	178	157	1,275	88.9%	43.7%	1,024	80.3%	95	156	87.8%	199	11.9%
Jun-08	4,401	1,484	2,917	66.3%	1,481	182	120	1,436	89.5%	49.2%	1,154	80.4%	107	175	87.8%	277	16.6%
Jul-08	4,097	1,558	2,539	62.0%	1,230	170	94	1,309	89.2%	51.6%	977	74.6%	170	162	87.6%	240	17.0%
Aug-08	4,211	1,623	2,588	61.5%	1,222	167	161	1,366	90.1%	52.8%	1,025	75.0%	129	212	84.5%	186	13.7%
Sep-08	4,446	1,868	2,578	58.0%	1,153	173	100	1,425	89.8%	55.3%	1,129	79.2%	128	168	88.2%	318	26.9%
Oct-08	4,412	1,715	2,697	61.1%	1,179	139	115	1,518	92.2%	56.3%	1,151	75.8%	136	231	84.8%	210	16.9%
Nov-08	3,795	1,485	2,310	60.9%	948	145	125	1,362	91.1%	59.0%	1,035	76.0%	145	182	86.6%	154	12.0%
Dec-08	3,759	1,479	2,280	60.7%	924	144	97	1,356	91.0%	59.5%	1,062	78.3%	121	173	87.2%	185	14.5%



**Los Angeles County MTA - Orange Line
Performance Report
December 2013**

	<u>Total</u> <u>Events</u>	<u>Non</u> <u>Violations</u>	<u>Potential</u> <u>Violations</u>	<u>Percent</u> <u>Citable</u>	<u>Non Issued</u> <u>Violations</u>	<u>No DMV</u> <u>Match</u>	<u>Police/</u> <u>Client</u> <u>Rejected</u>	<u>Citations</u> <u>Issued</u>	<u>DMV</u> <u>Match</u> <u>Rate</u>	<u>Issuance</u> <u>Rate</u>	<u>Dispo</u> <u>Paid</u>	<u>Pay</u> <u>Rate</u>	<u>Closed</u> <u>No Pay</u>	<u>Pending</u>	<u>Closure</u> <u>Rate</u>	<u>Court</u> <u>Packs</u>	<u>Contest</u> <u>Rate</u>
Jan-09	3,703	1,404	2,299	62.1%	882	157	87	1,417	90.5%	61.6%	1,100	77.6%	150	167	88.2%	219	15.3%
Feb-09	3,397	1,348	2,049	60.3%	853	125	64	1,196	91.0%	58.4%	917	76.7%	154	125	89.5%	309	23.6%
Mar-09	3,731	1,446	2,285	61.2%	978	145	86	1,307	90.6%	57.2%	1,017	77.8%	134	156	88.1%	154	11.3%
Apr-09	3,693	1,548	2,145	58.1%	926	133	74	1,219	90.7%	56.8%	968	79.4%	98	153	87.4%	203	14.2%
May-09	3,644	1,458	2,186	60.0%	936	139	102	1,250	90.7%	57.2%	974	77.9%	130	146	88.3%	219	14.4%
Jun-09	3,298	1,316	1,982	60.1%	887	118	112	1,095	91.1%	55.2%	825	75.3%	137	133	87.9%	214	15.7%
Jul-09	3,417	1,401	2,016	59.0%	829	147	42	1,187	89.3%	58.9%	922	77.7%	116	149	87.4%	225	16.6%
Aug-09	3,225	1,295	1,930	59.8%	804	142	62	1,126	89.3%	58.3%	852	75.7%	145	129	88.5%	168	11.9%
Sep-09	3,092	1,304	1,788	57.8%	700	119	91	1,088	90.8%	60.9%	797	73.3%	161	130	88.1%	152	12.7%
Oct-09	3,455	1,386	2,069	59.9%	875	125	82	1,194	91.1%	57.7%	883	74.0%	161	150	87.4%	216	16.5%
Nov-09	3,254	1,333	1,921	59.0%	815	118	71	1,106	90.9%	57.6%	811	73.3%	156	139	87.4%	34	2.8%
Dec-09	3,360	1,423	1,937	57.6%	851	135	90	1,086	89.7%	56.1%	823	75.8%	124	139	87.2%	35	2.8%
Jan-10	2,771	1,034	1,737	62.7%	694	128	85	1,043	89.8%	60.0%	798	76.5%	123	122	88.3%	148	13.5%
Feb-10	2,817	1,150	1,667	59.2%	782	121	87	885	88.9%	53.1%	610	68.9%	132	143	83.8%	148	12.5%
Mar-10	3,133	1,198	1,935	61.8%	767	101	73	1,168	92.5%	60.4%	824	70.5%	179	165	85.9%	202	17.9%
Apr-10	3,145	1,278	1,867	59.4%	828	130	59	1,039	89.4%	55.7%	752	72.4%	142	145	86.0%	148	13.6%
May-10	3,557	1,390	2,167	60.9%	1,040	154	125	1,127	89.0%	52.0%	801	71.1%	194	132	88.3%	145	12.1%
Jun-10	6,773	4,598	2,175	32.1%	1,056	124	19	1,119	90.2%	51.4%	816	72.9%	155	148	86.8%	176	15.9%
Jul-10	10,157	7,542	2,615	25.7%	1,353	126	10	1,262	91.0%	48.3%	925	73.3%	169	168	86.7%	189	17.4%
Aug-10	9,206	6,923	2,283	24.8%	1,115	116	38	1,168	91.2%	51.2%	819	70.1%	128	221	81.1%	196	18.8%
Sep-10	8,403	6,311	2,092	24.9%	978	115	29	1,114	90.9%	53.3%	782	70.2%	121	211	81.1%	200	22.6%
Oct-10	7,902	5,988	1,914	24.2%	834	122	21	1,080	90.0%	56.4%	778	72.0%	109	193	82.1%	160	13.7%
Nov-10	7,298	5,430	1,868	25.6%	703	120	12	1,165	90.7%	62.4%	865	74.2%	88	212	81.8%	148	14.2%
Dec-10	7,316	5,397	1,919	26.2%	743	102	60	1,176	92.4%	61.3%	830	70.6%	138	208	82.3%	178	15.8%
Jan-11	6,947	5,317	1,630	23.5%	636	134	61	994	88.7%	61.0%	692	69.6%	114	188	81.1%	140	12.5%
Feb-11	6,889	5,368	1,521	22.1%	565	100	87	956	91.3%	62.9%	631	66.0%	134	191	80.0%	106	8.4%
Mar-11	7,953	6,062	1,891	23.8%	813	118	88	1,078	90.8%	57.0%	687	63.7%	171	220	79.6%	232	19.9%
Apr-11	7,672	5,756	1,916	25.0%	753	105	121	1,163	92.4%	60.7%	587	50.5%	338	238	79.5%	188	16.9%
May-11	7,952	5,867	2,085	26.2%	921	125	144	1,164	91.3%	55.8%	565	48.5%	316	283	75.7%	200	18.5%
Jun-11	7,750	5,825	1,925	24.8%	1,011	97	179	914	91.8%	47.5%	396	43.3%	209	309	66.2%	252	21.6%
Jul-11	6,872	4,884	1,988	28.9%	1,094	137	255	894	89.3%	45.0%	400	44.7%	151	343	61.6%	152	12.9%
Aug-11	5,931	3,864	2,067	34.9%	1,155	130	323	912	90.5%	44.1%	394	43.2%	164	354	61.2%	186	18.7%
Sep-11	5,918	3,827	2,091	35.3%	1,099	139	297	992	90.3%	47.4%	444	44.8%	170	378	61.9%	244	25.5%
Oct-11	6,525	4,144	2,381	36.5%	1,181	171	329	1,200	89.9%	50.4%	544	45.3%	217	439	63.4%	174	16.1%
Nov-11	5,888	3,780	2,108	35.8%	1,046	173	239	1,062	88.3%	50.4%	486	45.8%	187	389	63.4%	150	12.9%
Dec-11	5,870	3,657	2,213	37.7%	1,018	106	354	1,195	93.6%	54.0%	503	42.1%	292	400	66.5%	186	16.0%



**Los Angeles County MTA - Orange Line
Performance Report
December 2013**

	<u>Total Events</u>	<u>Non Violations</u>	<u>Potential Violations</u>	<u>Percent Citable</u>	<u>Non Issued Violations</u>	<u>No DMV Match</u>	<u>Police/ Client Rejected</u>	<u>Citations Issued</u>	<u>DMV Match Rate</u>	<u>DMV Issuance Rate</u>	<u>Dispo Paid</u>	<u>Pay Rate</u>	<u>Closed No Pay</u>	<u>Pending</u>	<u>Closure Rate</u>	<u>Court Packs</u>	<u>Contest Rate</u>
Jan-12	6,213	3,949	2,264	36.44%	1,213	208	465	1,051	87.94%	46.42%	432	41.1%	195	424	59.7%	197	21.6%
Feb-12	6,285	3,941	2,344	37.30%	1,218	161	394	1,126	90.42%	48.04%	399	35.4%	262	465	58.7%	183	20.5%
Mar-12	6,653	4,173	2,480	37.28%	1,389	173	503	1,091	90.21%	43.99%	354	32.4%	272	465	57.4%	187	20.5%
Apr-12	6,792	4,150	2,642	38.90%	1,390	156	405	1,252	91.40%	47.39%	347	27.7%	389	516	58.8%	191	19.3%
May-12	7,433	4,563	2,870	38.61%	1,627	204	631	1,243	90.18%	43.31%	343	27.6%	333	567	54.4%	236	19.7%
Jun-12	4,938	2,442	2,496	50.55%	1,291	229	603	1,205	88.76%	48.28%	271	22.5%	371	563	53.3%	202	19.0%
Jul-12	6,490	4,114	2,376	36.61%	1,096	163	306	1,280	90.68%	53.87%	274	21.4%	359	647	49.5%	57	4.8%
Aug-12	7,053	4,242	2,811	39.86%	1,281	182	310	1,530	91.00%	54.43%	252	16.5%	479	799	47.8%	99	9.4%
Sep-12	6,223	3,460	2,763	44.40%	1,375	206	326	1,388	89.27%	50.24%	279	20.1%	393	716	48.4%	110	9.8%
Oct-12	23,353	15,064	8,289	35.49%	4,754	649	1308	3,535	88.18%	42.65%	866	24.5%	1013	1,656	53.2%	139	12.7%
Nov-12	18,812	11,764	7,048	37.47%	4,645	636	1128	2,403	84.74%	34.09%	516	21.5%	702	1,185	50.7%	125	10.0%
Dec-12	17,936	11,516	6,420	35.79%	4,465	599	1117	1,955	83.68%	30.45%	436	22.3%	516	1,003	48.7%	145	11.7%
Jan-13	16,848	11,257	5,591	33.18%	2,809	403	989	2,782	90.34%	49.76%	475	17.1%	910	1,397	49.8%	232	19.3%
Feb-13	15,352	10,873	4,479	29.18%	2,399	318	855	2,080	90.22%	46.44%	398	19.1%	584	1,098	47.2%	309	24.1%
Mar-13	17,100	12,464	4,636	27.11%	2,491	324	723	2,145	89.85%	46.27%	455	21.2%	563	1,127	47.5%	373	24.4%
Apr-13	15,517	11,136	4,381	28.23%	2,329	339	667	2,052	88.91%	46.84%	434	21.2%	542	1,076	47.6%	338	24.4%
May-13	22,852	18,027	4,825	21.11%	2,553	305	990	2,272	91.45%	47.09%	436	19.2%	509	1,327	41.6%	436	12.3%
Jun-13	16,390	11,570	4,820	29.41%	2,757	350	961	2,063	89.63%	42.80%	369	17.9%	391	1,303	36.8%	368	15.3%
Jul-13	16,198	10,901	5,297	32.70%	3,217	352	1066	2,080	89.94%	39.27%	352	16.9%	351	1,377	33.8%	341	17.4%
Aug-13	16,413	10,366	6,047	36.84%	3,587	427	1283	2,460	89.76%	40.68%	301	12.2%	526	1,633	33.6%	318	11.4%
Sep-13	16,324	9,584	6,740	41.29%	4,256	514	1809	2,484	89.31%	36.85%	219	8.8%	375	1,890	23.9%	429	20.6%
Oct-13	17,387	10,512	6,875	39.54%	3,876	462	1592	2,999	90.86%	43.62%	99	3.3%	51	2,849	5.0%	442	20.6%
Nov-13	14,659	8,588	6,071	41.41%	3,268	440	1226	2,803	90.15%	46.17%	6	0.2%	24	2,773	1.1%	347	16.2%
Dec-13	15,675	9,542	6,133	39.13%	3,709	414	1376	2,424	90.18%	39.52%	0	0.0%	0	2,424	0.0%	420	20.5%
Total	589,061	352,225	236,836	40.21%	116,722	16,366	20,456	120,114	89.57%	50.72%	69,569	38.7%	18,719	31,826	60.5%	8,851	16.51%

* Pay Rate and Closure Rate percentages are based on a 4 month lag

** Contested Citations Data Available from August 2006 to present

*** Contested Citations take into account a 6 month lag from the violation date to the trail date.



Los Angeles County MTA - Expo Line
Performance Report
December 2013

	<u>Total</u> <u>Events</u>	<u>Non</u> <u>Violations</u>	<u>Potential</u> <u>Violations</u>	<u>Percent</u> <u>Citable</u>	<u>Non Issued</u> <u>Violations</u>	<u>No DMV</u> <u>Match</u>	<u>Police/</u> <u>Client</u> <u>Rejected</u>	<u>Citations</u> <u>Issued</u>	<u>DMV</u> <u>Match</u> <u>Rate</u>	<u>Issuance</u> <u>Rate</u>	<u>Dispo</u> <u>Paid</u>	<u>Pay</u> <u>Rate</u>	<u>Closed</u> <u>No Pay</u>	<u>Pending</u>	<u>Closure</u> <u>Rate</u>	<u>Court</u> <u>Packs</u>	<u>Contest</u> <u>Rate</u>
Jan-12	3,868	3,371	497	12.8%	374	45	107	123	83.6%	24.7%	44	35.8%	18	61	50.4%	0	0.0%
Feb-12	5,540	4,868	672	12.1%	492	61	128	180	83.5%	26.8%	58	32.2%	35	87	51.7%	0	0.0%
Mar-12	5,820	5,012	808	13.9%	595	69	181	213	85.1%	26.4%	45	21.1%	53	115	46.0%	0	0.0%
Apr-12	5,626	4,943	683	12.1%	523	65	128	160	81.6%	23.4%	37	23.1%	42	81	49.4%	0	0.0%
May-12	5,982	5,290	692	11.6%	520	21	149	172	93.9%	24.9%	52	30.2%	33	87	49.4%	0	0.0%
Jun-12	4,596	4,209	387	8.4%	302	27	65	85	84.7%	22.0%	20	23.5%	19	46	45.9%	2	0.0%
Jul-12	3,935	3,536	399	10.1%	288	21	88	111	90.5%	27.8%	23	20.7%	28	60	45.9%	6	4.9%
Aug-12	3,870	3,284	586	15.1%	394	54	86	192	83.7%	32.8%	45	23.4%	47	100	47.9%	3	1.7%
Sep-12	5,640	5,071	569	10.1%	361	12	108	208	96.3%	36.6%	52	25.0%	60	96	53.8%	2	0.9%
Oct-12	5,957	5,329	628	10.5%	433	0	157	195	100.0%	31.1%	43	22.1%	40	112	42.6%	6	3.8%
Nov-12	4,290	3,814	476	11.1%	364	0	134	112	100.0%	23.5%	26	23.2%	28	58	48.2%	3	1.7%
Dec-12	3,484	3,199	285	8.2%	203	0	82	82	100.0%	28.8%	16	19.5%	22	44	46.3%	5	5.9%
Jan-13	4,457	4,020	437	9.8%	306	5	98	131	97.9%	30.0%	17	13.0%	58	56	57.3%	21	18.9%
Feb-13	4,868	4,322	546	11.2%	381	8	136	165	97.4%	30.2%	28	17.0%	66	71	57.0%	31	16.1%
Mar-13	6,866	6,222	644	9.4%	386	5	157	258	98.8%	40.1%	48	18.6%	115	95	63.2%	32	15.4%
Apr-13	4,882	4,280	602	12.3%	375	1	125	227	99.7%	37.7%	27	11.9%	105	95	58.1%	25	12.0%
May-13	5,893	5,223	670	11.4%	426	0	165	244	100.0%	36.4%	33	13.5%	95	116	52.5%	32	15.4%
Jun-13	7,106	6,661	445	6.3%	300	0	119	145	100.0%	32.6%	24	16.6%	56	65	55.2%	32	15.4%
Jul-13	4,165	3,646	519	12.5%	352	1	139	167	99.7%	32.2%	17	10.2%	68	82	50.9%	38	44.7%
Aug-13	4,506	3,811	695	15.4%	503	69	132	192	82.4%	27.6%	29	15.1%	35	128	33.3%	9	8.1%
Sep-13	4,844	4,231	613	12.7%	460	56	176	153	85.5%	25.0%	17	11.1%	20	116	24.2%	30	15.6%
Oct-13	5,062	4,509	553	10.9%	402	56	128	151	83.3%	27.3%	5	3.3%	3	143	5.3%	32	15.4%
Nov-13	4,445	3,941	504	11.3%	374	42	118	130	85.5%	25.8%	1	0.8%	0	129	0.8%	13	6.3%
Dec-13	4,592	4,126	466	10.1%	371	53	128	95	80.8%	20.4%	0	0.0%	0	95	0.0%	24	12.3%
Total	120,294	106,918	13,376	11.12%	9,485	671	3,034	3,891	91.17%	29.09%	707	20.7%	1,046	2,138	51.8%	346	8.94%

* Pay Rate and Closure Rate percentages are based on a 4 month lag

** Contested Citations Data Available from January 2012 to present

*** Contested Citations take into account a 6 month lag from the violation date to the trail date.