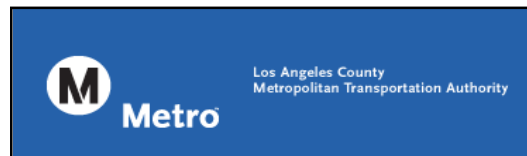




Orange Line Monthly Report



December 2010



Prepared by: ACS Transportation Solutions
Confidential

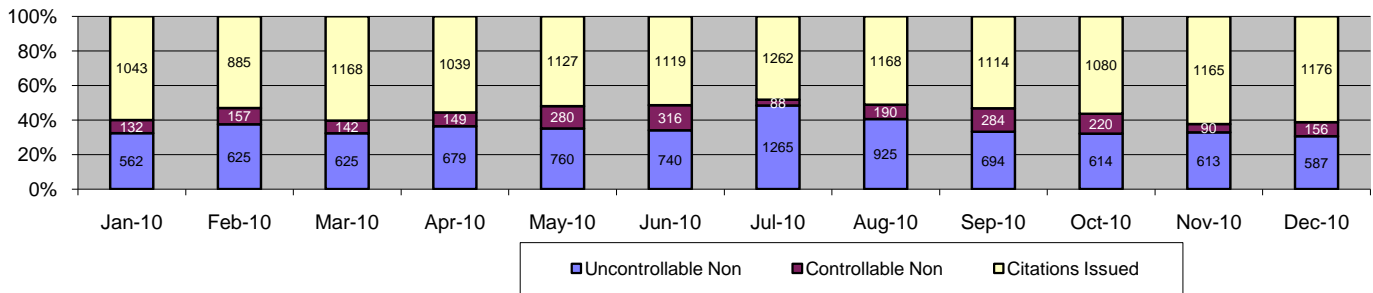
Table of Contents

Los Angeles County MTA Orange Line	Page
<i>Approach Summary Report, All Locations</i>	3
<i>Approach Summary Report, Location 1301: NB Tujunga Ave @ Busway</i>	4
<i>Approach Summary Report, Location 1302: SB Tujunga Ave @ Busway</i>	5
<i>Approach Summary Report, Location 1313: EB Oxnard St. @ Buffalo Ave</i>	6
<i>Approach Summary Report, Location 1314: WB Oxnard St. @ Buffalo Ave</i>	7
<i>Approach Summary Report, Location 1321: NB Woodman Ave @ Busway</i>	8
<i>Approach Summary Report, Location 1322: SB Woodman Ave @ Busway</i>	9
<i>Approach Summary Report, Location 1331: NB Kester Ave @ Busway</i>	10
<i>Approach Summary Report, Location 1332: SB Kester Ave @ Busway</i>	11
<i>Approach Summary Report, Location 1341: NB Sepulveda Blvd @ Busway</i>	12
<i>Approach Summary Report, Location 1342: SB Sepulveda Blvd @ Busway</i>	13
<i>Approach Summary Report, Location 1351: NB Woodley @ Busway</i>	14
<i>Approach Summary Report, Location 1352: SB Woodley @ Busway</i>	15
<i>Approach Summary Report, Location 1361: NB Balboa Blvd @ Busway</i>	16
<i>Approach Summary Report, Location 1362: SB Balboa Blvd @ Busway</i>	17
<i>Approach Summary Report, Location 1371: NB White Oak Ave @ Busway</i>	18
<i>Approach Summary Report, Location 1372: SB White Oak Ave @ Busway</i>	19
<i>Approach Summary Report, Location 1382: SB Lindley Ave @ Busway</i>	20
<i>Approach Summary Report, Location 1385: WB to NB Lindley Ave @ Busway</i>	21
<i>Approach Summary Report, Location 1391: NB Reseda Blvd @ Busway</i>	22
<i>Approach Summary Report, Location 1392: SB Reseda Blvd @ Busway</i>	23
<i>Approach Summary Report, Location 1402: SB Mason Ave. @ Busway</i>	24
<i>Approach Summary Report, Location 1405: WB to NB Mason Ave. @ Busway</i>	25
<i>Approach Summary Report, Location 1412: SB De Soto Ave @ Busway</i>	26
<i>Approach Summary Report, Location 1415: WB to NB De Soto Ave. @ Busway</i>	27
<i>Customer Service Report</i>	28
<i>Daily Citation Yield Report</i>	29
<i>Citations by Time (Graph)</i>	30
<i>Average Red Light Seconds (Graph)</i>	31
<i>Average Speed (Graph)</i>	32
<i>Monthly Citation Yield Report</i>	33
<i>Disposition Summary Report</i>	34
<i>Performance Report</i>	35



A xerox Company

Los Angeles County MTA Orange Line Approach Summary Report All Locations

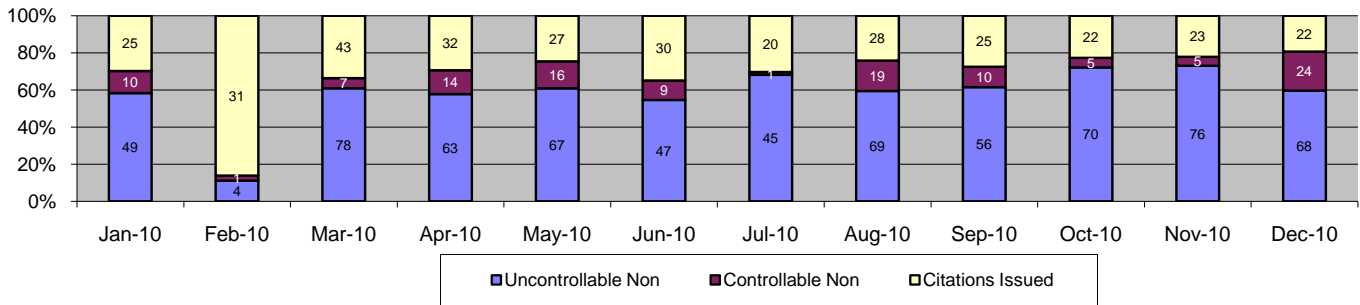


Events	Dec-10		3 Month Average		Year to Date Total		Year to Date Average		2008 Average	
	Quantity	% of Events	Quantity	% of Events	Quantity	% of Events	Quantity	% of Events	Quantity	% of Events
Non Violations	5,397	74%	5,910	75%	48,239	67%	4,020	67%	1,657	39%
Violations	1,919	26%	1,958	25%	24,239	33%	2,020	33%	2,595	61%
Total Events	7,316	100%	7,868	100%	72,478	100%	6,040	100%	4,252	100%
<i>Violations</i>	<i>Quantity</i>	<i>% of Viol</i>	<i>Quantity</i>	<i>% of Viol</i>	<i>Quantity</i>	<i>% of Viol</i>	<i>Quantity</i>	<i>% of Viol</i>	<i>Quantity</i>	<i>% of Viol</i>
Uncont. Non-Issued Viol	587	31%	640	33%	8,689	36%	724	36%	895	34%
Cont. Non-Issued Viol	156	8%	198	10%	2,204	9%	184	9%	358	14%
Citations	1,176	61%	1,120	57%	13,346	55%	1,112	55%	1,343	52%
Daily Av. Vehicle Counts	213,112		234,482		2,776,198		231,350		222,018	
Av. Violation Speed	24.5		24.5		24.8		24.8		24.4	
Av. Issued Speed	24.9		25.0		25.3		25.3		25.2	
Av. Violation Sec.	10.4		10.2		10.1		10.1		9.5	
Av. Issued Sec.	9.8		9.8		9.5		9.5		8.9	
Cal. Days/Enforc. Days	31	31	30	30	378	365	31	30	31	31
Daily Citation Yield	37.9	37.9	36.9	36.9	35.4	36.6	35.4	36.6	43.3	43.3
Cit/Viol. Iss. Rate	61%		57%		55%		55%		52%	
Controllable Iss. Rate	88%		85%		86%		86%		79%	
<i>Non - Violations</i>	<i>Quantity</i>	<i>% Non-Viol</i>	<i>Quantity</i>	<i>% Non-Viol</i>	<i>Quantity</i>	<i>% Non-Viol</i>	<i>Quantity</i>	<i>% Non-Viol</i>	<i>Quantity</i>	<i>% Non-Viol</i>
Rear Axle Violation	15	0%	11	0%	241	0%	20	0%	7	0%
Right Turn	16	0%	19	0%	245	1%	20	1%	21	1%
No Violation Occurred	5,366	99%	5,879	99%	47,753	99%	3,979	99%	1,629	98%
Total Non Violations	5,397	100%	5,910	100%	48,239	100%	4,020	100%	1,656	100%
<i>Uncontrollable Non-Iss</i>	<i>Quantity</i>	<i>% of Un.Non</i>	<i>Quantity</i>	<i>% of Un.Non</i>	<i>Quantity</i>	<i>% of Un.Non</i>	<i>Quantity</i>	<i>% of Un.Non</i>	<i>Quantity</i>	<i>% of Un.Non</i>
No Plate	178	30%	184	29%	2,117	24%	176	24%	288	32%
Out of State Plate	31	5%	35	5%	380	4%	32	4%	41	5%
Glare on Plate	6	1%	6	1%	55	1%	5	1%	10	1%
Illegible Plate	1	0%	4	1%	79	1%	7	1%	7	1%
Plate Obstructed	9	2%	10	2%	113	1%	9	1%	12	1%
Windshield Glare	70	12%	100	16%	1,282	15%	107	15%	169	19%
Driver Obstructed	54	9%	38	6%	435	5%	36	5%	60	7%
Car Obstructed	23	4%	23	4%	265	3%	22	3%	21	2%
Emergency Vehicle	103	18%	104	16%	1,093	13%	91	13%	106	12%
No DMV Match Found	102	17%	119	19%	1,459	17%	122	17%	162	18%
LASD Expired	4	1%	1	0%	113	1%	9	1%	6	1%
Other	6	1%	15	2%	1,298	15%	108	15%	12	1%
Total	587	100%	640	100%	8,689	100%	724	100%	895	100%
<i>Controllable Non-Iss</i>	<i>Quantity</i>	<i>% Cont. Non</i>	<i>Quantity</i>	<i>% Cont. Non</i>	<i>Quantity</i>	<i>% Cont. Non</i>	<i>Quantity</i>	<i>% Cont. Non</i>	<i>Quantity</i>	<i>% Cont. Non</i>
Framing of Plate	6	4%	6	3%	50	2%	4	2%	24	7%
Focus / Clarity of Plate	7	4%	4	2%	51	2%	4	2%	10	3%
Dark Interior	68	44%	65	33%	639	29%	53	29%	36	10%
Framing of Driver	1	1%	0	0%	16	1%	1	1%	23	6%
Focus / Clarity of Driver	5	3%	6	3%	115	5%	10	5%	10	3%
Framing of Car	3	2%	6	3%	80	4%	7	4%	19	5%
Data Error	1	1%	1	0%	19	1%	2	1%	82	23%
Exposure	0	0%	55	28%	200	9%	17	9%	4	1%
Equipment Malfunction	5	3%	35	18%	405	18%	34	18%	19	5%
LASD Return	60	38%	21	10%	618	28%	52	28%	130	36%
ACS Expired	0	0%	1	1%	11	0%	1	0%	3	1%
Total	156	100%	198	100%	2,204	100%	184	100%	358	100%



A xerox Company

Los Angeles County MTA Orange Line Approach Summary Report Location 1301: NB Tujunga Ave @ Busway

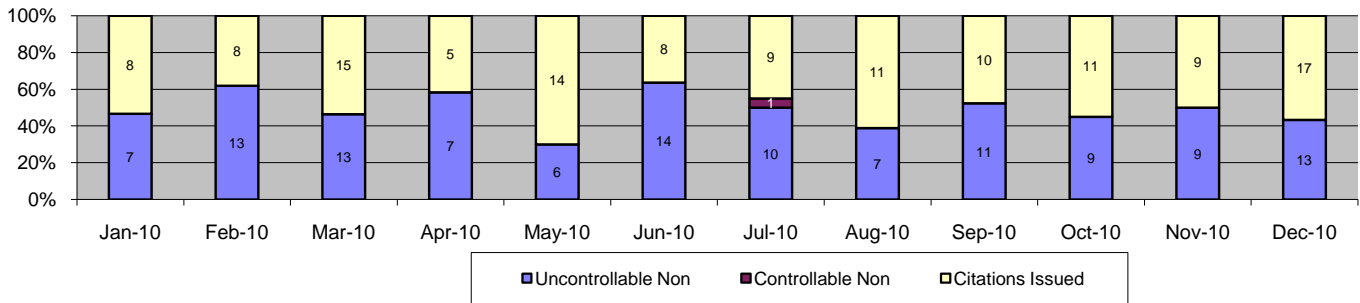


Events	Dec-10		3 Month Average		Year to Date Total		Year to Date Average		2009 Average	
	Quantity	% of Events	Quantity	% of Events	Quantity	% of Events	Quantity	% of Events	Quantity	% of Events
Non Violations	5	4%	7	5%	79	6%	7	6%	7	5%
Violations	114	96%	97	92%	1,141	94%	95	94%	125	95%
Total Events	119	100%	104	100%	1,220	100%	102	100%	133	100%
<i>Violations</i>	<i>Quantity</i>	<i>% of Viol</i>	<i>Quantity</i>	<i>% of Viol</i>	<i>Quantity</i>	<i>% of Viol</i>	<i>Quantity</i>	<i>% of Viol</i>	<i>Quantity</i>	<i>% of Viol</i>
Uncont. Non-Issued Viol	68	60%	67	69%	692	61%	58	61%	86	69%
Cont. Non-Issued Viol	24	21%	7	7%	121	11%	10	11%	10	8%
Citations	22	19%	23	24%	328	29%	27	29%	30	24%
Daily Av. Vehicle Counts	4,032		4,272		51,323		4,277		3,718	
Av. Violation Speed	19.9		20.2		20.3		20.3		20.0	
Av. Issued Speed	19.0		19.2		19.7		19.7		19.2	
Av. Violation Sec.	12.5		12.0		11.8		11.8		12.3	
Av. Issued Sec.	8.7		9.9		9.4		9.4		9.3	
Cal. Days/Enforc. Days	31	31	30	30	365	365	30	30	31	31
Daily Citation Yield	0.7	0.7	0.8	0.8	0.9	0.9	0.9	0.9	1.0	1.0
Cit/Viol. Iss. Rate	19%		24%		29%		29%		24%	
Controllable Iss. Rate	48%		78%		73%		73%		76%	
<i>Non - Violations</i>	<i>Quantity</i>	<i>% Non-Viol</i>	<i>Quantity</i>	<i>% Non-Viol</i>	<i>Quantity</i>	<i>% Non-Viol</i>	<i>Quantity</i>	<i>% Non-Viol</i>	<i>Quantity</i>	<i>% Non-Viol</i>
Rear Axle Violation	0	0%	0	0%	0	0%	0	0%	0	0%
Right Turn	0	0%	0	0%	0	0%	0	0%	0	0%
No Violation Occurred	5	100%	7	100%	79	100%	7	100%	7	6%
Total Non Violations	5	100%	7	100%	79	100%	7	100%	7	100%
<i>Uncontrollable Non-Iss</i>	<i>Quantity</i>	<i>% of Un.Non</i>	<i>Quantity</i>	<i>% of Un.Non</i>	<i>Quantity</i>	<i>% of Un.Non</i>	<i>Quantity</i>	<i>% of Un.Non</i>	<i>Quantity</i>	<i>% of Un.Non</i>
No Plate	8	12%	7	10%	80	12%	7	12%	9	10%
Out of State Plate	1	1%	2	2%	12	2%	1	2%	1	1%
Glare on Plate	0	0%	0	0%	1	0%	0	0%	0	0%
Illegible Plate	0	0%	0	0%	0	0%	0	0%	0	0%
Plate Obstructed	0	0%	0	0%	1	0%	0	0%	0	0%
Windshield Glare	12	18%	9	14%	116	17%	10	17%	16	18%
Driver Obstructed	4	6%	2	3%	21	3%	2	3%	3	4%
Car Obstructed	0	0%	0	0%	2	0%	0	0%	0	0%
Emergency Vehicle	42	62%	44	65%	425	61%	35	61%	52	60%
No DMV Match Found	1	1%	3	4%	33	5%	3	5%	5	6%
LASD Expired	0	0%	0	0%	1	0%	0	0%	0	0%
Other	0	0%	0	0%	0	0%	0	0%	0	0%
Total	68	100%	67	100%	692	100%	58	100%	86	100%
<i>Controllable Non-Iss</i>	<i>Quantity</i>	<i>% Cont. Non</i>	<i>Quantity</i>	<i>% Cont. Non</i>	<i>Quantity</i>	<i>% Cont. Non</i>	<i>Quantity</i>	<i>% Cont. Non</i>	<i>Quantity</i>	<i>% Cont. Non</i>
Framing of Plate	0	0%	0	0%	0	0%	0	0%	1	9%
Focus / Clarity of Plate	0	0%	0	0%	0	0%	0	0%	0	3%
Dark Interior	14	58%	6	90%	75	62%	6	62%	1	7%
Framing of Driver	1	4%	0	0%	4	3%	0	3%	1	9%
Focus / Clarity of Driver	0	0%	0	0%	2	2%	0	2%	1	5%
Framing of Car	0	0%	0	0%	1	1%	0	1%	0	3%
Data Error	0	0%	0	0%	0	0%	0	0%	0	1%
Exposure	0	0%	0	0%	1	1%	0	1%	0	1%
Equipment Malfunction	2	8%	0	0%	6	5%	1	5%	0	0%
LASD Return	7	29%	1	10%	32	26%	3	26%	6	63%
ACS Expired	0	0%	0	0%	0	0%	0	0%	0	0%
Total	24	100%	7	100%	121	100%	10	100%	10	100%



A Xerox Company

Los Angeles County MTA Orange Line Approach Summary Report Location 1302: SB Tujunga Ave @ Busway

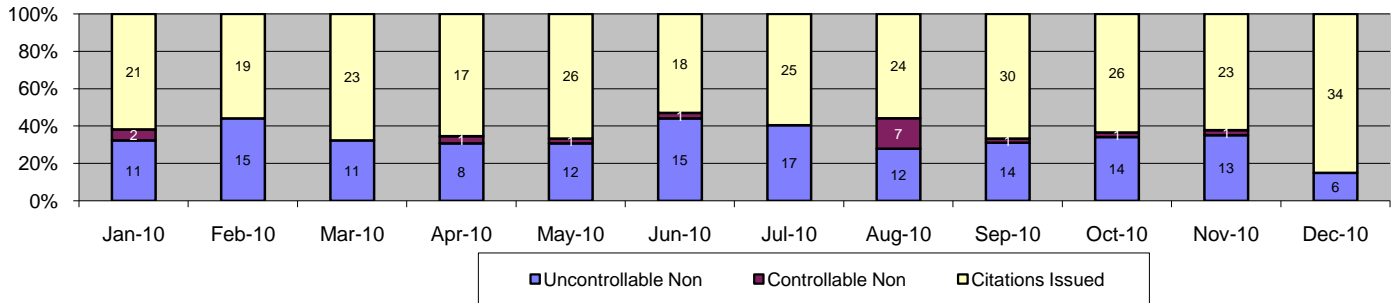


Events	Dec-10		3 Month Average		Year to Date Total		Year to Date Average		2009 Average	
	Quantity	% of Events	Quantity	% of Events	Quantity	% of Events	Quantity	% of Events	Quantity	% of Events
Non Violations	1	3%	1	11%	18	7%	2	7%	3	10%
Violations	30	97%	20	92%	245	93%	20	93%	25	90%
Total Events	31	100%	21	100%	263	100%	22	100%	28	100%
<i>Violations</i>	<i>Quantity</i>	<i>% of Viol</i>	<i>Quantity</i>	<i>% of Viol</i>	<i>Quantity</i>	<i>% of Viol</i>	<i>Quantity</i>	<i>% of Viol</i>	<i>Quantity</i>	<i>% of Viol</i>
Uncont. Non-Issued Viol	13	43%	10	49%	119	49%	10	49%	11	45%
Cont. Non-Issued Viol	0	0%	0	0%	1	0%	0	0%	1	2%
Citations	17	57%	10	51%	125	51%	10	51%	13	53%
Daily Av. Vehicle Counts	3,749		4,320		49,776		4,148		3,763	
Av. Violation Speed	20.6		21.0		20.5		20.5		20.7	
Av. Issued Speed	19.4		21.0		20.1		20.1		20.8	
Av. Violation Sec.	9.2		12.3		12.2		12.2		13.1	
Av. Issued Sec.	8.7		11.1		11.9		11.9		12.3	
Cal. Days/Enforc. Days	31	31	30	30	365	365	30	30	31	31
Daily Citation Yield	0.5	0.5	0.3	0.3	0.3	0.3	0.3	0.3	0.4	0.4
Cit/Viol. Iss. Rate	57%		51%		51%		51%		53%	
Controllable Iss. Rate	100%		100%		99%		99%		96%	
<i>Non - Violations</i>	<i>Quantity</i>	<i>% Non-Viol</i>	<i>Quantity</i>	<i>% Non-Viol</i>	<i>Quantity</i>	<i>% Non-Viol</i>	<i>Quantity</i>	<i>% Non-Viol</i>	<i>Quantity</i>	<i>% Non-Viol</i>
Rear Axle Violation	0	0%	0	0%	0	0%	0	0%	0	0%
Right Turn	0	0%	0	0%	0	0%	0	0%	0	0%
No Violation Occurred	1	100%	1	100%	18	100%	2	100%	3	100%
Total Non Violations	1	100%	1	100%	18	100%	2	100%	3	100%
<i>Uncontrollable Non-Iss</i>	<i>Quantity</i>	<i>% of Un.Non</i>	<i>Quantity</i>	<i>% of Un.Non</i>	<i>Quantity</i>	<i>% of Un.Non</i>	<i>Quantity</i>	<i>% of Un.Non</i>	<i>Quantity</i>	<i>% of Un.Non</i>
No Plate	1	8%	2	21%	31	26%	3	26%	3	31%
Out of State Plate	1	8%	1	10%	4	3%	0	3%	0	3%
Glare on Plate	0	0%	0	0%	0	0%	0	0%	0	0%
Illegible Plate	0	0%	0	3%	1	1%	0	1%	0	1%
Plate Obstructed	0	0%	0	0%	0	0%	0	0%	0	2%
Windshield Glare	0	0%	0	0%	2	2%	0	2%	0	3%
Driver Obstructed	0	0%	0	0%	0	0%	0	0%	0	1%
Car Obstructed	0	0%	0	0%	0	0%	0	0%	0	0%
Emergency Vehicle	8	62%	5	48%	59	50%	5	50%	4	34%
No DMV Match Found	3	23%	2	17%	21	18%	2	18%	3	25%
LASD Expired	0	0%	0	0%	1	1%	0	1%	0	0%
Other	0	0%	0	0%	0	0%	0	0%	0	0%
Total	13	100%	10	100%	119	100%	10	100%	11	100%
<i>Controllable Non-Iss</i>	<i>Quantity</i>	<i>% Cont. Non</i>	<i>Quantity</i>	<i>% Cont. Non</i>	<i>Quantity</i>	<i>% Cont. Non</i>	<i>Quantity</i>	<i>% Cont. Non</i>	<i>Quantity</i>	<i>% Cont. Non</i>
Framing of Plate	0	0%	0	0%	0	0%	0	0%	0	0%
Focus / Clarity of Plate	0	0%	0	0%	0	0%	0	0%	0	0%
Dark Interior	0	0%	0	0%	1	100%	0	100%	0	0%
Framing of Driver	0	0%	0	0%	0	0%	0	0%	0	0%
Focus / Clarity of Driver	0	0%	0	0%	0	0%	0	0%	0	0%
Framing of Car	0	0%	0	0%	0	0%	0	0%	0	0%
Data Error	0	0%	0	0%	0	0%	0	0%	0	14%
Exposure	0	0%	0	0%	0	0%	0	0%	0	14%
Equipment Malfunction	0	0%	0	0%	0	0%	0	0%	0	0%
LASD Return	0	0%	0	0%	0	0%	0	0%	0	43%
ACS Expired	0	0%	0	0%	0	0%	0	0%	0	29%
Total	0	100%	0	100%	1	100%	0	100%	1	100%



A xerox Company

Los Angeles County MTA Orange Line Approach Summary Report Location 1313: EB Oxnard St. @ Buffalo Ave

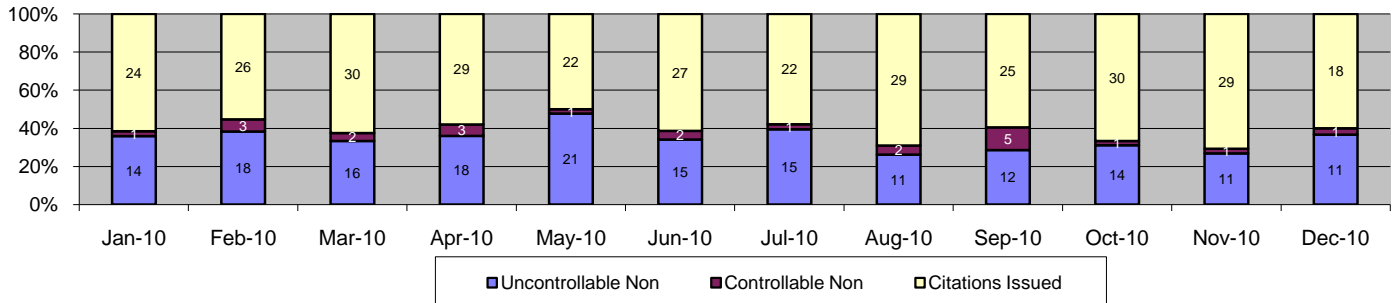


Events	Dec-10		3 Month Average		Year to Date Total		Year to Date Average		2009 Average	
	Quantity	% of Events	Quantity	% of Events	Quantity	% of Events	Quantity	% of Events	Quantity	% of Events
Non Violations	30	43%	39	44%	401	47%	33	47%	40	42%
Violations	40	57%	41	57%	449	53%	37	53%	61	58%
Total Events	70	100%	80	100%	850	100%	71	100%	101	100%
Violations										
	Quantity	% of Viol	Quantity	% of Viol	Quantity	% of Viol	Quantity	% of Viol	Quantity	% of Viol
Uncont. Non-Issued Viol	6	15%	14	33%	148	33%	12	33%	20	32%
Cont. Non-Issued Viol	0	0%	1	2%	15	3%	1	3%	2	3%
Citations	34	85%	26	64%	286	64%	24	64%	39	64%
Daily Av. Vehicle Counts	9,207		10,190		117,943		9,829		9,646	
Av. Violation Speed	21.4		20.2		22.5		22.5		22.4	
Av. Issued Speed	20.9		20.1		22.5		22.5		22.4	
Av. Violation Sec.	14.0		15.7		12.2		12.2		12.8	
Av. Issued Sec.	15.2		14.9		11.5		11.5		11.1	
Cal. Days/Enforc. Days	31	31	30	30	365	365	30	30	31	31
Daily Citation Yield	1.1	1.1	0.9	0.9	0.8	0.8	0.8	0.8	1.3	1.3
Cit/Viol. Iss. Rate	85%		64%		64%		64%		64%	
Controllable Iss. Rate	100%		96%		95%		95%		95%	
Non - Violations										
	Quantity	% Non-Viol	Quantity	% Non-Viol	Quantity	% Non-Viol	Quantity	% Non-Viol	Quantity	% Non-Viol
Rear Axle Violation	1	3%	1	3%	27	7%	2	7%	1	2%
Right Turn	15	50%	19	49%	210	52%	18	52%	17	18%
No Violation Occurred	14	47%	19	48%	164	41%	14	41%	21	22%
Total Non Violations	30	100%	39	100%	401	100%	33	100%	40	100%
Uncontrollable Non-Iss										
	Quantity	% of Un.Non	Quantity	% of Un.Non	Quantity	% of Un.Non	Quantity	% of Un.Non	Quantity	% of Un.Non
No Plate	1	17%	5	37%	47	32%	4	32%	8	41%
Out of State Plate	1	17%	1	10%	8	5%	1	5%	1	3%
Glare on Plate	0	0%	0	2%	1	1%	0	1%	0	0%
Illegible Plate	0	0%	0	0%	1	1%	0	1%	0	0%
Plate Obstructed	0	0%	0	2%	2	1%	0	1%	0	1%
Windshield Glare	1	17%	1	5%	11	7%	1	7%	1	6%
Driver Obstructed	0	0%	1	5%	3	2%	0	2%	0	2%
Car Obstructed	0	0%	0	0%	0	0%	0	0%	0	0%
Emergency Vehicle	1	17%	2	15%	26	18%	2	18%	4	18%
No DMV Match Found	2	33%	3	24%	44	30%	4	30%	6	29%
LASD Expired	0	0%	0	0%	5	3%	0	3%	0	0%
Other	0	0%	0	0%	0	0%	0	0%	0	0%
Total	6	100%	14	100%	148	100%	12	100%	20	100%
Controllable Non-Iss										
	Quantity	% Cont. Non	Quantity	% Cont. Non	Quantity	% Cont. Non	Quantity	% Cont. Non	Quantity	% Cont. Non
Framing of Plate	0	0%	0	0%	0	0%	0	0%	0	4%
Focus / Clarity of Plate	0	0%	0	0%	0	0%	0	0%	0	4%
Dark Interior	0	0%	1	100%	10	67%	1	67%	0	0%
Framing of Driver	0	0%	0	0%	0	0%	0	0%	0	0%
Focus / Clarity of Driver	0	0%	0	0%	1	7%	0	7%	0	4%
Framing of Car	0	0%	0	0%	1	7%	0	7%	0	0%
Data Error	0	0%	0	0%	0	0%	0	0%	0	0%
Exposure	0	0%	0	0%	1	7%	0	7%	0	4%
Equipment Malfunction	0	0%	0	0%	0	0%	0	0%	0	0%
LASD Return	0	0%	0	0%	2	13%	0	13%	1	65%
ACS Expired	0	0%	0	0%	0	0%	0	0%	0	17%
Total	0	100%	1	100%	15	100%	1	100%	2	100%



A xerox Company

Los Angeles County MTA Orange Line Approach Summary Report Location 1314: WB Oxnard St. @ Buffalo Ave

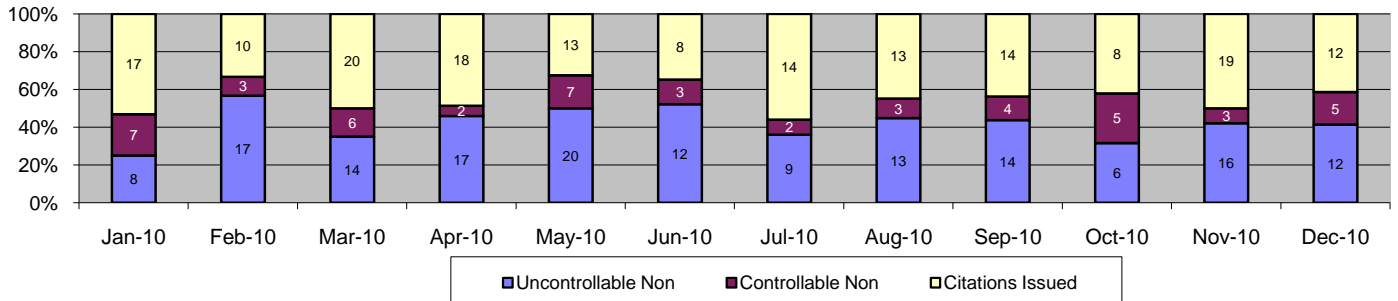


Events	Dec-10		3 Month Average		Year to Date Total		Year to Date Average		2009 Average	
	Quantity	% of Events	Quantity	% of Events	Quantity	% of Events	Quantity	% of Events	Quantity	% of Events
Non Violations	97	76%	109	66%	1,217	70%	101	70%	128	72%
Violations	30	24%	43	32%	510	30%	43	30%	56	28%
Total Events	127	100%	151	100%	1,727	100%	144	100%	185	100%
<i>Violations</i>										
	<i>Quantity</i>	<i>% of Viol</i>	<i>Quantity</i>	<i>% of Viol</i>	<i>Quantity</i>	<i>% of Viol</i>	<i>Quantity</i>	<i>% of Viol</i>	<i>Quantity</i>	<i>% of Viol</i>
Uncont. Non-Issued Viol	11	37%	12	29%	176	35%	15	35%	24	43%
Cont. Non-Issued Viol	1	3%	2	5%	23	5%	2	5%	4	6%
Citations	18	60%	28	66%	311	61%	26	61%	29	51%
Daily Av. Vehicle Counts	9,462		10,841		123,007		10,251		9,782	
Av. Violation Speed	30.5		31.2		30.5		30.5		30.6	
Av. Issued Speed	30.8		32.0		31.5		31.5		31.1	
Av. Violation Sec.	7.1		4.9		5.6		5.6		5.8	
Av. Issued Sec.	8.4		5.3		5.6		5.6		5.9	
Cal. Days/Enforc. Days	31	31	30	30	365	365	30	30	31	31
Daily Citation Yield	0.6	0.6	0.9	0.9	0.9	0.9	0.9	0.9	0.9	0.9
Cit/Viol. Iss. Rate	60%		66%		61%		61%		51%	
Controllable Iss. Rate	95%		92%		93%		93%		89%	
<i>Non - Violations</i>										
	<i>Quantity</i>	<i>% Non-Viol</i>	<i>Quantity</i>	<i>% Non-Viol</i>	<i>Quantity</i>	<i>% Non-Viol</i>	<i>Quantity</i>	<i>% Non-Viol</i>	<i>Quantity</i>	<i>% Non-Viol</i>
Rear Axle Violation	2	2%	0	0%	5	0%	0	0%	0	0%
Right Turn	0	0%	0	0%	0	0%	0	0%	0	0%
No Violation Occurred	95	98%	108	100%	1,212	100%	101	100%	128	72%
Total Non Violations	97	100%	109	100%	1,217	100%	101	100%	128	100%
<i>Uncontrollable Non-Iss</i>										
	<i>Quantity</i>	<i>% of Un.Non</i>	<i>Quantity</i>	<i>% of Un.Non</i>	<i>Quantity</i>	<i>% of Un.Non</i>	<i>Quantity</i>	<i>% of Un.Non</i>	<i>Quantity</i>	<i>% of Un.Non</i>
No Plate	5	45%	5	41%	58	33%	5	33%	9	36%
Out of State Plate	0	0%	0	3%	8	5%	1	5%	1	4%
Glare on Plate	0	0%	0	0%	0	0%	0	0%	0	1%
Illegible Plate	0	0%	0	0%	1	1%	0	1%	0	0%
Plate Obstructed	1	9%	0	0%	3	2%	0	2%	0	1%
Windshield Glare	1	9%	3	22%	42	24%	4	24%	7	30%
Driver Obstructed	0	0%	0	0%	2	1%	0	1%	1	3%
Car Obstructed	0	0%	2	14%	8	5%	1	5%	0	1%
Emergency Vehicle	1	9%	1	8%	14	8%	1	8%	1	6%
No DMV Match Found	0	0%	2	14%	34	19%	3	19%	4	17%
LASD Expired	3	27%	0	0%	6	3%	1	3%	0	0%
Other	0	0%	0	0%	0	0%	0	0%	0	0%
Total	11	100%	12	100%	176	100%	15	100%	24	100%
<i>Controllable Non-Iss</i>										
	<i>Quantity</i>	<i>% Cont. Non</i>	<i>Quantity</i>	<i>% Cont. Non</i>	<i>Quantity</i>	<i>% Cont. Non</i>	<i>Quantity</i>	<i>% Cont. Non</i>	<i>Quantity</i>	<i>% Cont. Non</i>
Framing of Plate	0	0%	0	0%	0	0%	0	0%	0	0%
Focus / Clarity of Plate	0	0%	0	0%	0	0%	0	0%	0	5%
Dark Interior	0	0%	1	43%	8	35%	1	35%	0	9%
Framing of Driver	0	0%	0	0%	0	0%	0	0%	0	2%
Focus / Clarity of Driver	0	0%	0	14%	2	9%	0	9%	0	0%
Framing of Car	0	0%	0	0%	0	0%	0	0%	0	2%
Data Error	0	0%	0	0%	0	0%	0	0%	0	0%
Exposure	0	0%	0	0%	0	0%	0	0%	0	5%
Equipment Malfunction	0	0%	0	0%	0	0%	0	0%	0	2%
LASD Return	1	100%	1	43%	13	57%	1	57%	3	74%
ACS Expired	0	0%	0	0%	0	0%	0	0%	0	0%
Total	1	100%	2	100%	23	100%	2	100%	4	100%



A xerox Company

Los Angeles County MTA Orange Line Approach Summary Report Location 1321: NB Woodman Ave @ Busway

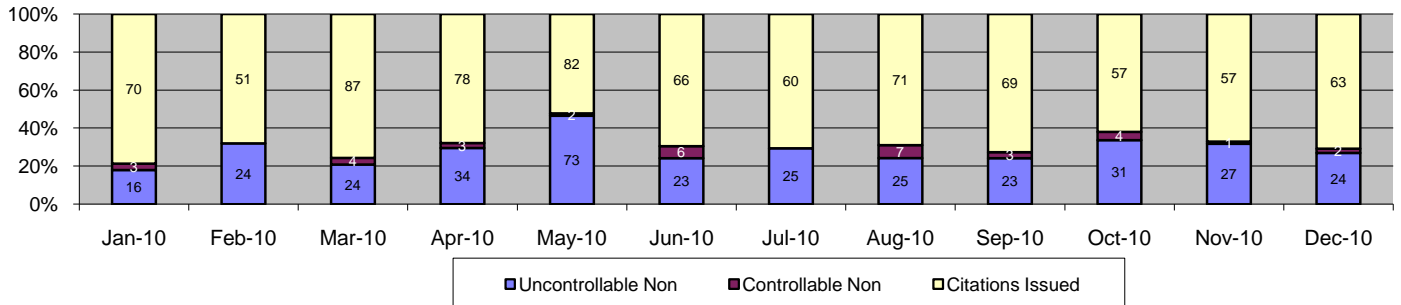


Events	Dec-10		3 Month Average		Year to Date Total		Year to Date Average		2009 Average	
	Quantity	% of Events	Quantity	% of Events	Quantity	% of Events	Quantity	% of Events	Quantity	% of Events
Non Violations	8	22%	6	20%	91	20%	8	20%	13	15%
Violations	29	78%	30	80%	374	80%	31	80%	57	85%
Total Events	37	100%	36	100%	465	100%	39	100%	70	100%
Violations										
	Quantity	% of Viol	Quantity	% of Viol	Quantity	% of Viol	Quantity	% of Viol	Quantity	% of Viol
Uncont. Non-Issued Viol	12	41%	12	40%	158	42%	13	42%	27	47%
Cont. Non-Issued Viol	5	17%	4	13%	50	13%	4	13%	12	22%
Citations	12	41%	14	46%	166	44%	14	44%	18	31%
Daily Av. Vehicle Counts	11,144		11,670		139,849		11,654		11,137	
Av. Violation Speed	28.4		25.3		25.6		25.6		24.6	
Av. Issued Speed	31.7		26.6		26.8		26.8		25.3	
Av. Violation Sec.	5.0		5.1		5.7		5.7		6.5	
Av. Issued Sec.	4.5		4.4		4.7		4.7		5.9	
Cal. Days/Enforc. Days	31	31	30	30	365	365	30	30	31	31
Daily Citation Yield	0.4	0.4	0.5	0.5	0.5	0.5	0.5	0.5	0.6	0.6
Cit/Viol. Iss. Rate	41%		46%		44%		44%		31%	
Controllable Iss. Rate	71%		77%		77%		77%		59%	
Non - Violations										
	Quantity	% Non-Viol	Quantity	% Non-Viol	Quantity	% Non-Viol	Quantity	% Non-Viol	Quantity	% Non-Viol
Rear Axle Violation	0	0%	0	0%	0	0%	0	0%	0	0%
Right Turn	0	0%	0	0%	1	1%	0	1%	0	0%
No Violation Occurred	8	100%	6	100%	90	99%	8	99%	13	15%
Total Non Violations	8	100%	6	100%	91	100%	8	100%	13	100%
Uncontrollable Non-Iss										
	Quantity	% of Un.Non	Quantity	% of Un.Non	Quantity	% of Un.Non	Quantity	% of Un.Non	Quantity	% of Un.Non
No Plate	4	33%	4	36%	38	24%	3	24%	7	24%
Out of State Plate	0	0%	0	0%	2	1%	0	1%	0	1%
Glare on Plate	0	0%	0	0%	0	0%	0	0%	0	1%
Illegible Plate	0	0%	0	0%	0	0%	0	0%	0	0%
Plate Obstructed	0	0%	0	0%	1	1%	0	1%	0	0%
Windshield Glare	4	33%	4	36%	56	35%	5	35%	14	53%
Driver Obstructed	0	0%	0	0%	0	0%	0	0%	0	2%
Car Obstructed	2	17%	0	0%	4	3%	0	3%	0	1%
Emergency Vehicle	0	0%	1	6%	25	16%	2	16%	2	8%
No DMV Match Found	2	17%	3	22%	31	20%	3	20%	3	10%
LASD Expired	0	0%	0	0%	1	1%	0	1%	0	1%
Other	0	0%	0	0%	0	0%	0	0%	0	0%
Total	12	100%	12	100%	158	100%	13	100%	27	100%
Controllable Non-Iss										
	Quantity	% Cont. Non	Quantity	% Cont. Non	Quantity	% Cont. Non	Quantity	% Cont. Non	Quantity	% Cont. Non
Framing of Plate	0	0%	0	8%	3	6%	0	6%	1	5%
Focus / Clarity of Plate	0	0%	0	0%	3	6%	0	6%	0	3%
Dark Interior	2	40%	3	67%	18	36%	2	36%	5	40%
Framing of Driver	0	0%	0	0%	0	0%	0	0%	0	3%
Focus / Clarity of Driver	0	0%	0	0%	2	4%	0	4%	1	5%
Framing of Car	1	20%	0	8%	3	6%	0	6%	0	1%
Data Error	0	0%	0	0%	0	0%	0	0%	0	0%
Exposure	0	0%	0	0%	0	0%	0	0%	0	1%
Equipment Malfunction	0	0%	0	0%	0	0%	0	0%	0	3%
LASD Return	2	40%	1	17%	21	42%	2	42%	5	37%
ACS Expired	0	0%	0	0%	0	0%	0	0%	0	1%
Total	5	100%	4	100%	50	100%	4	100%	12	100%



A xerox Company

Los Angeles County MTA Orange Line Approach Summary Report Location 1322: SB Woodman Ave @ Busway

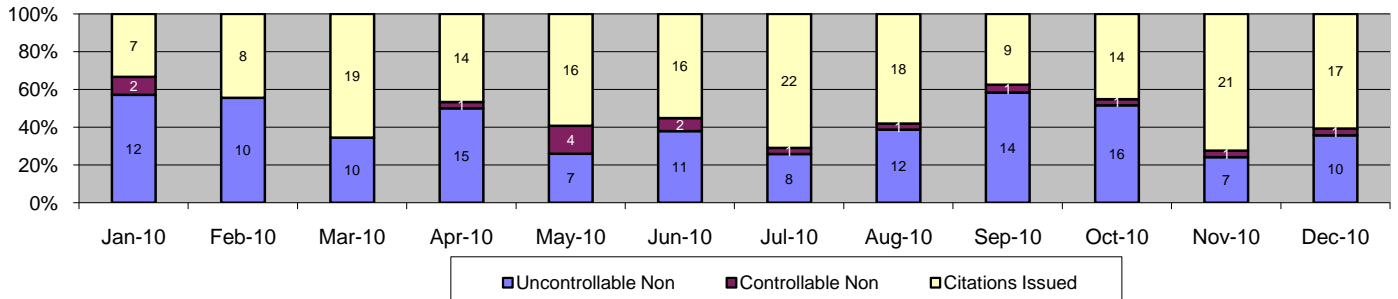


Events	Dec-10		3 Month Average		Year to Date Total		Year to Date Average		2009 Average	
	Quantity	% of Events	Quantity	% of Events	Quantity	% of Events	Quantity	% of Events	Quantity	% of Events
Non Violations	21	19%	56	17%	335	22%	28	22%	29	15%
Violations	89	81%	91	84%	1,195	78%	100	78%	143	85%
Total Events	110	100%	146	100%	1,530	100%	128	100%	171	100%
Violations										
	Quantity	% of Viol	Quantity	% of Viol	Quantity	% of Viol	Quantity	% of Viol	Quantity	% of Viol
Uncont. Non-Issued Viol	24	27%	27	30%	349	29%	29	29%	50	35%
Cont. Non-Issued Viol	2	2%	3	3%	35	3%	3	3%	11	7%
Citations	63	71%	61	67%	811	68%	68	68%	82	58%
Daily Av. Vehicle Counts	11,251		12,973		147,424		12,285		11,816	
Av. Violation Speed	27.8		27.8		27.9		27.9		28.1	
Av. Issued Speed	27.7		28.0		28.3		28.3		28.0	
Av. Violation Sec.	3.2		2.8		2.8		2.8		3.0	
Av. Issued Sec.	3.5		2.7		2.9		2.9		2.9	
Cal. Days/Enforc. Days	31	31	30	30	365	365	30	30	31	31
Daily Citation Yield	2.0	2.0	2.0	2.0	2.2	2.2	2.2	2.2	2.7	2.7
Cit/Viol. Iss. Rate	71%		67%		68%		68%		58%	
Controllable Iss. Rate	97%		96%		96%		96%		89%	
Non - Violations										
	Quantity	% Non-Viol	Quantity	% Non-Viol	Quantity	% Non-Viol	Quantity	% Non-Viol	Quantity	% Non-Viol
Rear Axle Violation	0	0%	0	0%	4	1%	0	1%	0	0%
Right Turn	0	0%	0	0%	0	0%	0	0%	0	0%
No Violation Occurred	21	100%	56	100%	331	99%	28	99%	28	15%
Total Non Violations	21	100%	56	100%	335	100%	28	100%	29	100%
Uncontrollable Non-Iss										
	Quantity	% of Un.Non	Quantity	% of Un.Non	Quantity	% of Un.Non	Quantity	% of Un.Non	Quantity	% of Un.Non
No Plate	10	42%	9	32%	122	35%	10	35%	23	45%
Out of State Plate	0	0%	2	6%	11	3%	1	3%	3	5%
Glare on Plate	1	4%	1	2%	4	1%	0	1%	0	0%
Illegible Plate	0	0%	0	0%	2	1%	0	1%	0	0%
Plate Obstructed	1	4%	1	5%	8	2%	1	2%	2	3%
Windshield Glare	2	8%	3	11%	32	9%	3	9%	6	13%
Driver Obstructed	2	8%	2	9%	22	6%	2	6%	3	6%
Car Obstructed	0	0%	0	1%	5	1%	0	1%	0	1%
Emergency Vehicle	1	4%	1	4%	6	2%	1	2%	1	2%
No DMV Match Found	7	29%	8	30%	94	27%	8	27%	12	24%
LASD Expired	0	0%	0	0%	3	1%	0	1%	0	1%
Other	0	0%	0	0%	40	11%	3	11%	0	0%
Total	24	100%	27	100%	349	100%	29	100%	50	100%
Controllable Non-Iss										
	Quantity	% Cont. Non	Quantity	% Cont. Non	Quantity	% Cont. Non	Quantity	% Cont. Non	Quantity	% Cont. Non
Framing of Plate	0	0%	0	13%	1	3%	0	3%	0	1%
Focus / Clarity of Plate	0	0%	0	0%	3	9%	0	9%	0	0%
Dark Interior	0	0%	1	50%	15	43%	1	43%	1	8%
Framing of Driver	0	0%	0	0%	0	0%	0	0%	0	1%
Focus / Clarity of Driver	0	0%	0	0%	1	3%	0	3%	0	3%
Framing of Car	0	0%	0	0%	0	0%	0	0%	0	1%
Data Error	0	0%	0	0%	0	0%	0	0%	0	0%
Exposure	0	0%	0	0%	0	0%	0	0%	0	3%
Equipment Malfunction	0	0%	1	25%	2	6%	0	6%	1	11%
LASD Return	2	100%	0	13%	12	34%	1	34%	7	70%
ACS Expired	0	0%	0	0%	1	3%	0	3%	0	2%
Total	2	100%	3	100%	35	100%	3	100%	11	100%



A xerox Company

Los Angeles County MTA Orange Line Approach Summary Report Location 1331: NB Kester Ave @ Busway

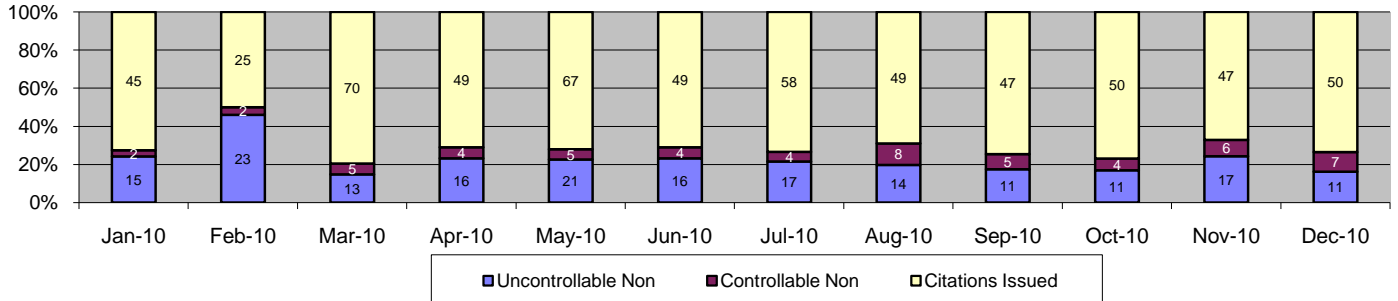


Events	Dec-10		3 Month Average		Year to Date Total		Year to Date Average		2009 Average	
	Quantity	% of Events	Quantity	% of Events	Quantity	% of Events	Quantity	% of Events	Quantity	% of Events
Non Violations	13	32%	22	41%	208	39%	17	39%	18	28%
Violations	28	68%	28	62%	328	61%	27	61%	33	72%
Total Events	41	100%	50	100%	536	100%	45	100%	51	100%
<i>Violations</i>										
	<i>Quantity</i>	<i>% of Viol</i>	<i>Quantity</i>	<i>% of Viol</i>	<i>Quantity</i>	<i>% of Viol</i>	<i>Quantity</i>	<i>% of Viol</i>	<i>Quantity</i>	<i>% of Viol</i>
Uncont. Non-Issued Viol	10	36%	12	44%	132	40%	11	40%	12	37%
Cont. Non-Issued Viol	1	4%	1	4%	15	5%	1	5%	2	7%
Citations	17	61%	15	52%	181	55%	15	55%	19	56%
Daily Av. Vehicle Counts	7,928		9,046		106,879		8,907		8,528	
Av. Violation Speed	30.7		31.2		32.5		32.5		33.1	
Av. Issued Speed	32.2		30.7		32.5		32.5		32.6	
Av. Violation Sec.	3.1		2.2		2.3		2.3		1.9	
Av. Issued Sec.	2.5		1.4		2.0		2.0		1.5	
Cal. Days/Enforc. Days	31	31	30	30	365	365	30	30	31	31
Daily Citation Yield	0.5	0.5	0.5	0.5	0.5	0.5	0.5	0.5	0.6	0.6
Cit /Viol. Iss. Rate	61%		52%		55%		55%		56%	
Controllable Iss. Rate	94%		94%		92%		92%		88%	
<i>Non - Violations</i>										
	<i>Quantity</i>	<i>% Non-Viol</i>	<i>Quantity</i>	<i>% Non-Viol</i>	<i>Quantity</i>	<i>% Non-Viol</i>	<i>Quantity</i>	<i>% Non-Viol</i>	<i>Quantity</i>	<i>% Non-Viol</i>
Rear Axle Violation	0	0%	0	0%	0	0%	0	0%	0	0%
Right Turn	0	0%	0	0%	0	0%	0	0%	0	0%
No Violation Occurred	13	100%	22	100%	208	100%	17	100%	18	28%
Total Non Violations	13	100%	22	100%	208	100%	17	100%	18	100%
<i>Uncontrollable Non-Iss</i>										
	<i>Quantity</i>	<i>% of Un.Non</i>	<i>Quantity</i>	<i>% of Un.Non</i>	<i>Quantity</i>	<i>% of Un.Non</i>	<i>Quantity</i>	<i>% of Un.Non</i>	<i>Quantity</i>	<i>% of Un.Non</i>
No Plate	2	20%	4	35%	43	33%	4	33%	5	37%
Out of State Plate	0	0%	0	0%	3	2%	0	2%	1	5%
Glare on Plate	0	0%	0	0%	0	0%	0	0%	0	0%
Illegible Plate	0	0%	0	0%	0	0%	0	0%	0	1%
Plate Obstructed	0	0%	0	0%	1	1%	0	1%	0	1%
Windshield Glare	0	0%	2	19%	32	24%	3	24%	3	27%
Driver Obstructed	0	0%	0	0%	0	0%	0	0%	0	3%
Car Obstructed	1	10%	1	5%	3	2%	0	2%	0	0%
Emergency Vehicle	3	30%	1	8%	13	10%	1	10%	0	2%
No DMV Match Found	4	40%	4	32%	35	27%	3	27%	3	24%
LASD Expired	0	0%	0	0%	2	2%	0	2%	0	0%
Other	0	0%	0	0%	0	0%	0	0%	0	0%
Total	10	100%	12	100%	132	100%	11	100%	12	100%
<i>Controllable Non-Iss</i>										
	<i>Quantity</i>	<i>% Cont. Non</i>	<i>Quantity</i>	<i>% Cont. Non</i>	<i>Quantity</i>	<i>% Cont. Non</i>	<i>Quantity</i>	<i>% Cont. Non</i>	<i>Quantity</i>	<i>% Cont. Non</i>
Framing of Plate	0	0%	0	0%	0	0%	0	0%	0	0%
Focus / Clarity of Plate	0	0%	0	0%	0	0%	0	0%	0	0%
Dark Interior	0	0%	1	100%	7	47%	1	47%	0	14%
Framing of Driver	0	0%	0	0%	0	0%	0	0%	0	0%
Focus / Clarity of Driver	0	0%	0	0%	1	7%	0	7%	0	0%
Framing of Car	0	0%	0	0%	0	0%	0	0%	0	0%
Data Error	0	0%	0	0%	0	0%	0	0%	0	0%
Exposure	0	0%	0	0%	0	0%	0	0%	0	10%
Equipment Malfunction	0	0%	0	0%	0	0%	0	0%	0	0%
LASD Return	1	100%	0	0%	7	47%	1	47%	2	69%
ACS Expired	0	0%	0	0%	0	0%	0	0%	0	7%
Total	1	100%	1	100%	15	100%	1	100%	2	100%



A xerox Company

Los Angeles County MTA Orange Line Approach Summary Report Location 1332: SB Kester Ave @ Busway

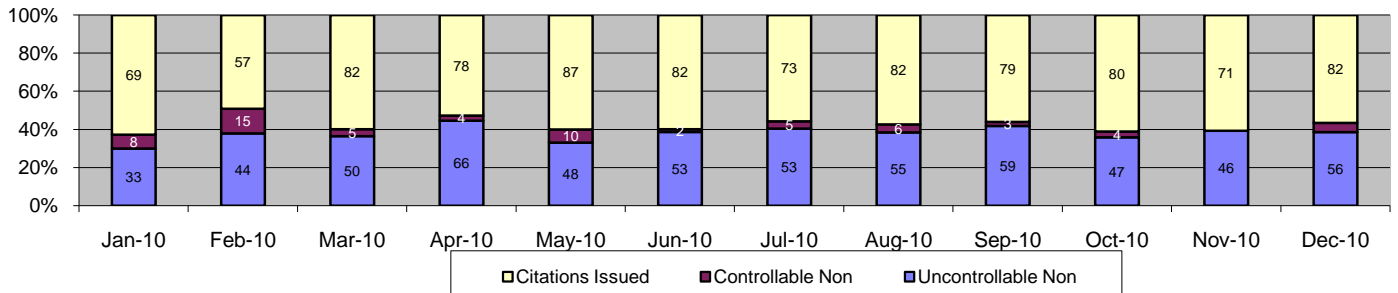


Events	Dec-10		3 Month Average		Year to Date Total		Year to Date Average		2009 Average	
	Quantity	% of Events	Quantity	% of Events	Quantity	% of Events	Quantity	% of Events	Quantity	% of Events
Non Violations	3	4%	5	7%	62	7%	5	7%	10	9%
Violations	68	96%	66	93%	847	93%	71	93%	115	91%
Total Events	71	100%	71	100%	909	100%	76	100%	125	100%
<i>Violations</i>										
	<i>Quantity</i>	<i>% of Viol</i>	<i>Quantity</i>	<i>% of Viol</i>	<i>Quantity</i>	<i>% of Viol</i>	<i>Quantity</i>	<i>% of Viol</i>	<i>Quantity</i>	<i>% of Viol</i>
Uncont. Non-Issued Viol	11	16%	13	20%	185	22%	15	22%	28	24%
Cont. Non-Issued Viol	7	10%	5	8%	56	7%	5	7%	9	8%
Citations	50	74%	48	73%	606	72%	51	72%	78	68%
Daily Av. Vehicle Counts	8,975		10,388		118,967		9,914		9,660	
Av. Violation Speed	33.6		32.9		34.2		34.2		33.5	
Av. Issued Speed	34.4		33.7		34.3		34.3		33.9	
Av. Violation Sec.	1.3		1.4		1.3		1.3		1.0	
Av. Issued Sec.	1.1		0.9		1.1		1.1		1.0	
Cal. Days/Enforc. Days	31	31	30	30	365	365	30	30	31	31
Daily Citation Yield	1.6	1.6	1.6	1.6	1.7	1.7	1.7	1.7	2.6	2.6
Cit /Viol. Iss. Rate	74%		73%		72%		72%		68%	
Controllable Iss. Rate	88%		91%		92%		92%		90%	
<i>Non - Violations</i>										
	<i>Quantity</i>	<i>% Non-Viol</i>	<i>Quantity</i>	<i>% Non-Viol</i>	<i>Quantity</i>	<i>% Non-Viol</i>	<i>Quantity</i>	<i>% Non-Viol</i>	<i>Quantity</i>	<i>% Non-Viol</i>
Rear Axle Violation	0	0%	0	6%	1	2%	0	2%	0	0%
Right Turn	0	0%	0	0%	0	0%	0	0%	0	0%
No Violation Occurred	3	100%	5	94%	61	98%	5	98%	10	9%
Total Non Violations	3	100%	5	100%	62	100%	5	100%	10	100%
<i>Uncontrollable Non-Iss</i>										
	<i>Quantity</i>	<i>% of Un.Non</i>	<i>Quantity</i>	<i>% of Un.Non</i>	<i>Quantity</i>	<i>% of Un.Non</i>	<i>Quantity</i>	<i>% of Un.Non</i>	<i>Quantity</i>	<i>% of Un.Non</i>
No Plate	1	9%	2	18%	46	25%	4	25%	7	24%
Out of State Plate	1	9%	3	23%	24	13%	2	13%	3	11%
Glare on Plate	0	0%	0	0%	1	1%	0	1%	0	0%
Illegible Plate	0	0%	0	3%	3	2%	0	2%	0	1%
Plate Obstructed	0	0%	0	0%	1	1%	0	1%	0	0%
Windshield Glare	2	18%	1	10%	27	15%	2	15%	4	16%
Driver Obstructed	2	18%	0	3%	6	3%	1	3%	2	6%
Car Obstructed	0	0%	0	0%	2	1%	0	1%	0	1%
Emergency Vehicle	0	0%	1	5%	5	3%	0	3%	0	1%
No DMV Match Found	5	45%	5	38%	67	36%	6	36%	10	37%
LASD Expired	0	0%	0	0%	3	2%	0	2%	1	3%
Other	0	0%	0	0%	0	0%	0	0%	0	0%
Total	11	100%	13	100%	185	100%	15	100%	28	100%
<i>Controllable Non-Iss</i>										
	<i>Quantity</i>	<i>% Cont. Non</i>	<i>Quantity</i>	<i>% Cont. Non</i>	<i>Quantity</i>	<i>% Cont. Non</i>	<i>Quantity</i>	<i>% Cont. Non</i>	<i>Quantity</i>	<i>% Cont. Non</i>
Framing of Plate	0	0%	0	0%	0	0%	0	0%	0	0%
Focus / Clarity of Plate	0	0%	0	0%	0	0%	0	0%	0	3%
Dark Interior	3	43%	3	67%	27	48%	2	48%	0	4%
Framing of Driver	0	0%	0	0%	0	0%	0	0%	0	2%
Focus / Clarity of Driver	0	0%	0	0%	0	0%	0	0%	0	1%
Framing of Car	0	0%	0	0%	0	0%	0	0%	0	0%
Data Error	0	0%	0	0%	0	0%	0	0%	0	0%
Exposure	0	0%	0	0%	4	7%	0	7%	1	13%
Equipment Malfunction	0	0%	1	27%	8	14%	1	14%	1	14%
LASD Return	4	57%	0	7%	17	30%	1	30%	6	63%
ACS Expired	0	0%	0	0%	0	0%	0	0%	0	1%
Total	7	100%	5	100%	56	100%	5	100%	9	100%



A xerox Company

Los Angeles County MTA Orange Line Approach Summary Report Location 1341: NB Sepulveda Blvd @ Busway

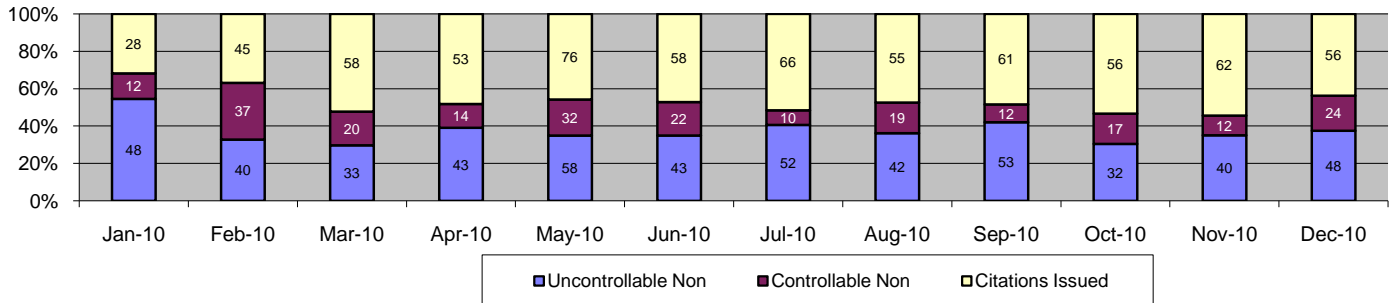


Events	Dec-10		3 Month Average		Year to Date Total		Year to Date Average		2009 Average	
	Quantity	% of Events	Quantity	% of Events	Quantity	% of Events	Quantity	% of Events	Quantity	% of Events
Non Violations	2	1%	5	5%	62	4%	5	4%	7	4%
Violations	145	99%	130	97%	1,601	96%	133	96%	183	96%
Total Events	147	100%	135	100%	1,663	100%	139	100%	190	100%
<i>Violations</i>										
	<i>Quantity</i>	<i>% of Viol</i>	<i>Quantity</i>	<i>% of Viol</i>	<i>Quantity</i>	<i>% of Viol</i>	<i>Quantity</i>	<i>% of Viol</i>	<i>Quantity</i>	<i>% of Viol</i>
Uncont. Non-Issued Viol	56	39%	51	39%	610	38%	51	38%	74	41%
Cont. Non-Issued Viol	7	5%	2	2%	69	4%	6	4%	13	7%
Citations	82	57%	77	59%	922	58%	77	58%	96	52%
Daily Av. Vehicle Counts	19,756		21,469		253,194		21,100		19,450	
Av. Violation Speed	33.7		34.8		34.5		34.5		34.9	
Av. Issued Speed	33.9		35.3		35.2		35.2		35.7	
Av. Violation Sec.	0.9		1.1		1.1		1.1		1.1	
Av. Issued Sec.	0.8		0.8		0.7		0.7		0.9	
Cal. Days/Enforc. Days	31	31	30	30	365	365	30	30	31	31
Daily Citation Yield	2.6	2.6	2.5	2.5	2.5	2.5	2.5	2.5	3.1	3.1
Cit/Viol. Iss. Rate	57%		59%		58%		58%		52%	
Controllable Iss. Rate	92%		97%		93%		93%		88%	
<i>Non - Violations</i>										
	<i>Quantity</i>	<i>% Non-Viol</i>	<i>Quantity</i>	<i>% Non-Viol</i>	<i>Quantity</i>	<i>% Non-Viol</i>	<i>Quantity</i>	<i>% Non-Viol</i>	<i>Quantity</i>	<i>% Non-Viol</i>
Rear Axle Violation	0	0%	1	13%	12	19%	1	19%	1	0%
Right Turn	0	0%	0	0%	0	0%	0	0%	0	0%
No Violation Occurred	2	100%	5	88%	50	81%	4	81%	7	4%
Total Non Violations	2	100%	5	100%	62	100%	5	100%	7	100%
<i>Uncontrollable Non-Iss</i>										
	<i>Quantity</i>	<i>% of Un.Non</i>	<i>Quantity</i>	<i>% of Un.Non</i>	<i>Quantity</i>	<i>% of Un.Non</i>	<i>Quantity</i>	<i>% of Un.Non</i>	<i>Quantity</i>	<i>% of Un.Non</i>
No Plate	24	43%	17	33%	194	32%	16	32%	27	37%
Out of State Plate	1	2%	3	6%	27	4%	2	4%	3	5%
Glare on Plate	1	2%	0	0%	2	0%	0	0%	0	1%
Illegible Plate	0	0%	1	1%	5	1%	0	1%	0	1%
Plate Obstructed	3	5%	2	3%	20	3%	2	3%	2	3%
Windshield Glare	7	13%	10	20%	127	21%	11	21%	16	22%
Driver Obstructed	4	7%	2	5%	21	3%	2	3%	2	3%
Car Obstructed	8	14%	4	9%	76	12%	6	12%	9	12%
Emergency Vehicle	4	7%	3	6%	41	7%	3	7%	3	4%
No DMV Match Found	4	7%	8	16%	84	14%	7	14%	10	13%
LASD Expired	0	0%	1	2%	12	2%	1	2%	1	1%
Other	0	0%	0	0%	1	0%	0	0%	0	0%
Total	56	100%	51	100%	610	100%	51	100%	74	100%
<i>Controllable Non-Iss</i>										
	<i>Quantity</i>	<i>% Cont. Non</i>	<i>Quantity</i>	<i>% Cont. Non</i>	<i>Quantity</i>	<i>% Cont. Non</i>	<i>Quantity</i>	<i>% Cont. Non</i>	<i>Quantity</i>	<i>% Cont. Non</i>
Framing of Plate	0	0%	0	0%	0	0%	0	0%	0	0%
Focus / Clarity of Plate	0	0%	0	14%	1	1%	0	1%	0	3%
Dark Interior	3	43%	1	43%	20	29%	2	29%	1	5%
Framing of Driver	0	0%	0	0%	0	0%	0	0%	0	1%
Focus / Clarity of Driver	0	0%	1	29%	4	6%	0	6%	0	3%
Framing of Car	0	0%	0	0%	0	0%	0	0%	0	0%
Data Error	0	0%	0	0%	0	0%	0	0%	1	8%
Exposure	0	0%	0	0%	1	1%	0	1%	0	0%
Equipment Malfunction	0	0%	0	0%	11	16%	1	16%	0	3%
LASD Return	4	57%	0	14%	30	43%	3	43%	10	75%
ACS Expired	0	0%	0	0%	2	3%	0	3%	0	3%
Total	7	100%	2	100%	69	100%	6	100%	13	100%



A Xerox Company

Los Angeles County MTA Orange Line Approach Summary Report Location 1342: SB Sepulveda Blvd @ Busway

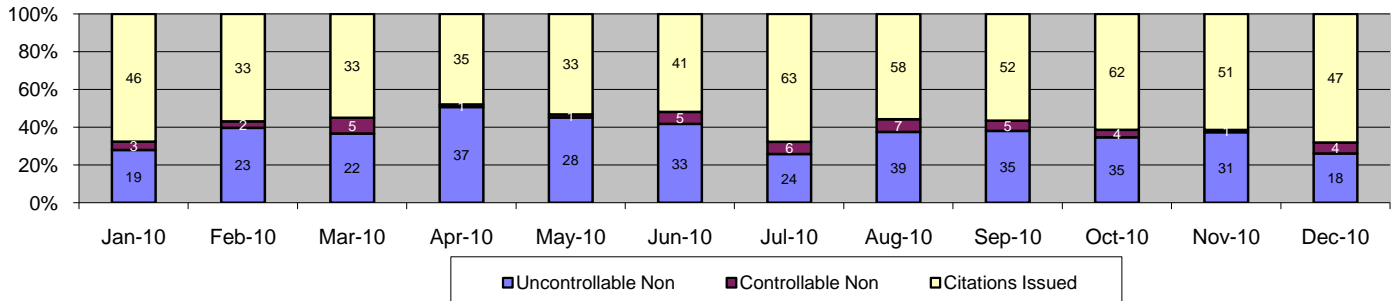


Events	Dec-10		3 Month Average		Year to Date Total		Year to Date Average		2009 Average	
	Quantity	% of Events	Quantity	% of Events	Quantity	% of Events	Quantity	% of Events	Quantity	% of Events
Non Violations	13	9%	10	8%	121	8%	10	8%	16	7%
Violations	128	91%	115	93%	1,437	92%	120	92%	172	93%
Total Events	141	100%	125	100%	1,558	100%	130	100%	188	100%
<i>Violations</i>										
	Quantity	% of Viol	Quantity	% of Viol	Quantity	% of Viol	Quantity	% of Viol	Quantity	% of Viol
Uncont. Non-Issued Viol	48	38%	42	36%	532	37%	44	37%	66	39%
Cont. Non-Issued Viol	24	19%	14	12%	231	16%	19	16%	26	15%
Citations	56	44%	60	52%	674	47%	56	47%	80	47%
Daily Av. Vehicle Counts	19,068		20,277		237,324		19,777		18,918	
Av. Violation Speed	34.3		34.6		35.2		35.2		35.5	
Av. Issued Speed	35.6		36.0		36.2		36.2		36.3	
Av. Violation Sec.	1.4		1.3		1.4		1.4		1.4	
Av. Issued Sec.	1.4		0.8		0.9		0.9		0.9	
Cal. Days/Enforc. Days	31	31	30	30	365	365	30	30	31	31
Daily Citation Yield	1.8	1.8	2.0	2.0	1.8	1.8	1.8	1.8	2.6	2.6
Cit/Viol. Iss. Rate	44%		52%		47%		47%		47%	
Controllable Iss. Rate	70%		81%		74%		74%		76%	
<i>Non - Violations</i>										
	Quantity	% Non-Viol	Quantity	% Non-Viol	Quantity	% Non-Viol	Quantity	% Non-Viol	Quantity	% Non-Viol
Rear Axle Violation	0	0%	1	7%	7	6%	1	6%	0	1%
Right Turn	0	0%	0	0%	3	2%	0	2%	1	0%
No Violation Occurred	13	100%	9	93%	111	92%	9	92%	15	6%
Total Non Violations	13	100%	10	100%	121	100%	10	100%	16	100%
<i>Uncontrollable Non-Iss</i>										
	Quantity	% of Un.Non	Quantity	% of Un.Non	Quantity	% of Un.Non	Quantity	% of Un.Non	Quantity	% of Un.Non
No Plate	13	27%	15	36%	159	30%	13	30%	24	36%
Out of State Plate	1	2%	2	4%	18	3%	2	3%	3	4%
Glare on Plate	1	2%	1	3%	12	2%	1	2%	0	0%
Illegible Plate	1	2%	1	2%	18	3%	2	3%	0	1%
Plate Obstructed	1	2%	2	4%	14	3%	1	3%	1	2%
Windshield Glare	12	25%	7	17%	114	21%	10	21%	18	26%
Driver Obstructed	4	8%	3	8%	17	3%	1	3%	2	3%
Car Obstructed	3	6%	2	4%	25	5%	2	5%	3	4%
Emergency Vehicle	4	8%	3	8%	47	9%	4	9%	3	4%
No DMV Match Found	7	15%	5	12%	80	15%	7	15%	12	18%
LASD Expired	0	0%	0	0%	4	1%	0	1%	1	1%
Other	1	2%	1	2%	24	5%	2	5%	0	0%
Total	48	100%	42	100%	532	100%	44	100%	66	100%
<i>Controllable Non-Iss</i>										
	Quantity	% Cont. Non	Quantity	% Cont. Non	Quantity	% Cont. Non	Quantity	% Cont. Non	Quantity	% Cont. Non
Framing of Plate	2	8%	1	10%	7	3%	1	3%	0	0%
Focus / Clarity of Plate	1	4%	1	5%	20	9%	2	9%	0	0%
Dark Interior	15	63%	8	59%	90	39%	8	39%	10	40%
Framing of Driver	0	0%	0	0%	1	0%	0	0%	0	1%
Focus / Clarity of Driver	2	8%	0	2%	20	9%	2	9%	1	3%
Framing of Car	0	0%	0	2%	2	1%	0	1%	0	0%
Data Error	0	0%	0	0%	0	0%	0	0%	0	0%
Exposure	0	0%	0	0%	0	0%	0	0%	0	1%
Equipment Malfunction	0	0%	0	0%	0	0%	0	0%	1	3%
LASD Return	4	17%	3	22%	91	39%	8	39%	13	52%
ACS Expired	0	0%	0	0%	0	0%	0	0%	0	0%
Total	24	100%	14	100%	231	100%	19	100%	26	100%



A xerox Company

Los Angeles County MTA Orange Line Approach Summary Report Location 1351: NB Woodley @ Busway

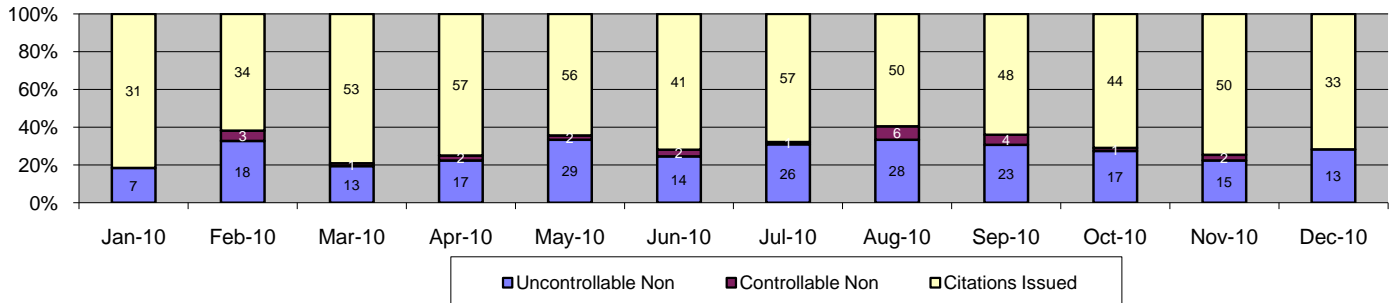


Events	Dec-10		3 Month Average		Year to Date Total		Year to Date Average		2009 Average	
	Quantity	% of Events	Quantity	% of Events	Quantity	% of Events	Quantity	% of Events	Quantity	% of Events
Non Violations	30	30%	34	25%	367	28%	31	28%	52	32%
Violations	69	70%	92	72%	942	72%	79	72%	118	68%
Total Events	99	100%	126	100%	1,309	100%	109	100%	171	100%
<i>Violations</i>										
	<i>Quantity</i>	<i>% of Viol</i>	<i>Quantity</i>	<i>% of Viol</i>	<i>Quantity</i>	<i>% of Viol</i>	<i>Quantity</i>	<i>% of Viol</i>	<i>Quantity</i>	<i>% of Viol</i>
Uncont. Non-Issued Viol	18	26%	34	37%	344	37%	29	37%	45	38%
Cont. Non-Issued Viol	4	6%	3	4%	44	5%	4	5%	23	20%
Citations	47	68%	55	60%	554	59%	46	59%	51	43%
Daily Av. Vehicle Counts	2,395		3,134		37,148		3,096		3,118	
Av. Violation Speed	20.5		19.7		20.6		20.6		19.5	
Av. Issued Speed	21.9		22.8		22.8		22.8		21.7	
Av. Violation Sec.	13.3		14.1		14.1		14.1		13.9	
Av. Issued Sec.	12.7		12.0		12.4		12.4		14.3	
Cal. Days/Enforc. Days	31	31	30	30	365	365	30	30	31	31
Daily Citation Yield	1.5	1.5	1.8	1.8	1.5	1.5	1.5	1.5	1.7	1.7
Cit /Viol. Iss. Rate	68%		60%		59%		59%		43%	
Controllable Iss. Rate	92%		94%		93%		93%		68%	
<i>Non - Violations</i>										
	<i>Quantity</i>	<i>% Non-Viol</i>	<i>Quantity</i>	<i>% Non-Viol</i>	<i>Quantity</i>	<i>% Non-Viol</i>	<i>Quantity</i>	<i>% Non-Viol</i>	<i>Quantity</i>	<i>% Non-Viol</i>
Rear Axle Violation	0	0%	0	0%	1	0%	0	0%	0	0%
Right Turn	0	0%	0	0%	0	0%	0	0%	0	0%
No Violation Occurred	30	100%	34	100%	366	100%	31	100%	52	32%
Total Non Violations	30	100%	34	100%	367	100%	31	100%	52	100%
<i>Uncontrollable Non-Iss</i>										
	<i>Quantity</i>	<i>% of Un.Non</i>	<i>Quantity</i>	<i>% of Un.Non</i>	<i>Quantity</i>	<i>% of Un.Non</i>	<i>Quantity</i>	<i>% of Un.Non</i>	<i>Quantity</i>	<i>% of Un.Non</i>
No Plate	5	28%	9	28%	80	23%	7	23%	14	32%
Out of State Plate	0	0%	1	2%	11	3%	1	3%	2	3%
Glare on Plate	0	0%	0	0%	1	0%	0	0%	0	0%
Illegible Plate	0	0%	0	0%	0	0%	0	0%	0	1%
Plate Obstructed	0	0%	0	1%	4	1%	0	1%	0	1%
Windshield Glare	0	0%	6	18%	60	17%	5	17%	13	29%
Driver Obstructed	2	11%	0	1%	4	1%	0	1%	1	1%
Car Obstructed	0	0%	0	0%	1	0%	0	0%	0	0%
Emergency Vehicle	1	6%	1	2%	10	3%	1	3%	1	3%
No DMV Match Found	5	28%	7	20%	79	23%	7	23%	11	24%
LASD Expired	0	0%	0	1%	6	2%	1	2%	0	1%
Other	5	28%	9	28%	88	26%	7	26%	2	5%
Total	18	100%	34	100%	344	100%	29	100%	45	100%
<i>Controllable Non-Iss</i>										
	<i>Quantity</i>	<i>% Cont. Non</i>	<i>Quantity</i>	<i>% Cont. Non</i>	<i>Quantity</i>	<i>% Cont. Non</i>	<i>Quantity</i>	<i>% Cont. Non</i>	<i>Quantity</i>	<i>% Cont. Non</i>
Framing of Plate	0	0%	0	0%	0	0%	0	0%	0	1%
Focus / Clarity of Plate	0	0%	0	0%	0	0%	0	0%	0	1%
Dark Interior	1	25%	1	30%	20	45%	2	45%	1	6%
Framing of Driver	0	0%	0	0%	0	0%	0	0%	2	9%
Focus / Clarity of Driver	0	0%	0	10%	1	2%	0	2%	0	1%
Framing of Car	0	0%	0	0%	1	2%	0	2%	0	1%
Data Error	1	25%	0	0%	1	2%	0	2%	11	48%
Exposure	0	0%	1	20%	5	11%	0	11%	0	1%
Equipment Malfunction	0	0%	0	0%	1	2%	0	2%	0	0%
LASD Return	2	50%	1	40%	14	32%	1	32%	7	31%
ACS Expired	0	0%	0	0%	1	2%	0	2%	0	1%
Total	4	100%	3	100%	44	100%	4	100%	23	100%



A xerox Company

Los Angeles County MTA Orange Line Approach Summary Report Location 1352: SB Woodley @ Busway

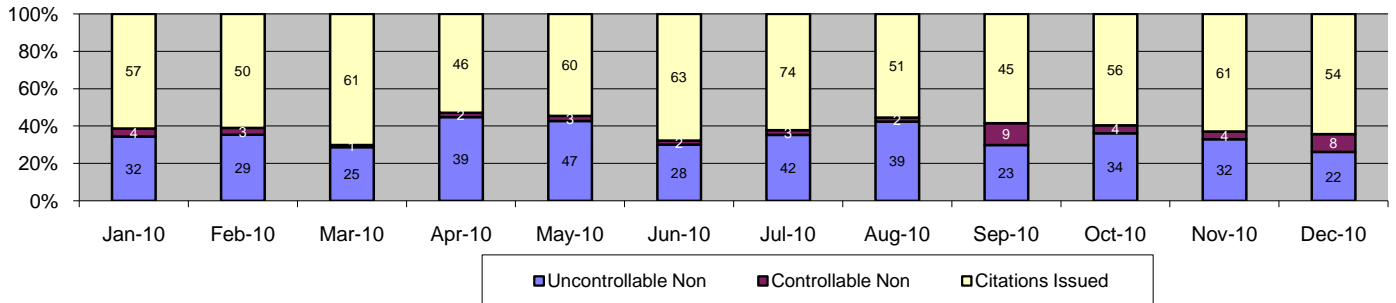


Events	Dec-10		3 Month Average		Year to Date Total		Year to Date Average		2009 Average	
	Quantity	% of Events	Quantity	% of Events	Quantity	% of Events	Quantity	% of Events	Quantity	% of Events
Non Violations	11	19%	12	12%	128	14%	11	14%	10	11%
Violations	46	81%	68	87%	798	86%	67	86%	74	89%
Total Events	57	100%	80	100%	926	100%	77	100%	84	100%
Violations										
	Quantity	% of Viol	Quantity	% of Viol	Quantity	% of Viol	Quantity	% of Viol	Quantity	% of Viol
Uncont. Non-Issued Viol	13	28%	18	27%	220	28%	18	28%	21	28%
Cont. Non-Issued Viol	0	0%	2	3%	24	3%	2	3%	5	6%
Citations	33	72%	47	70%	554	69%	46	69%	48	66%
Daily Av. Vehicle Counts	5,791		7,638		85,335		7,111		6,420	
Av. Violation Speed	20.7		20.4		20.8		20.8		20.7	
Av. Issued Speed	21.1		20.3		20.8		20.8		20.7	
Av. Violation Sec.	2.6		2.6		2.6		2.6		3.0	
Av. Issued Sec.	2.5		2.5		2.6		2.6		3.0	
Cal. Days/Enforc. Days	31	31	30	30	665	365	55	30	31	31
Daily Citation Yield	1.1	1.1	1.6	1.6	0.8	1.5	0.8	1.5	1.6	1.6
Cit /Viol. Iss. Rate	72%		70%		69%		69%		66%	
Controllable Iss. Rate	100%		95%		96%		96%		91%	
Non - Violations										
	Quantity	% Non-Viol	Quantity	% Non-Viol	Quantity	% Non-Viol	Quantity	% Non-Viol	Quantity	% Non-Viol
Rear Axle Violation	0	0%	0	0%	2	2%	0	2%	1	1%
Right Turn	0	0%	0	0%	0	0%	0	0%	0	0%
No Violation Occurred	11	100%	12	100%	126	98%	11	98%	10	11%
Total Non Violations	11	100%	12	100%	128	100%	11	100%	10	100%
Uncontrollable Non-Iss										
	Quantity	% of Un.Non	Quantity	% of Un.Non	Quantity	% of Un.Non	Quantity	% of Un.Non	Quantity	% of Un.Non
No Plate	8	62%	9	47%	93	42%	8	42%	8	37%
Out of State Plate	2	15%	1	4%	12	5%	1	5%	2	10%
Glare on Plate	0	0%	0	0%	0	0%	0	0%	0	0%
Illegible Plate	0	0%	0	2%	4	2%	0	2%	0	1%
Plate Obstructed	0	0%	0	2%	4	2%	0	2%	0	1%
Windshield Glare	0	0%	1	7%	20	9%	2	9%	3	12%
Driver Obstructed	1	8%	1	5%	8	4%	1	4%	2	7%
Car Obstructed	0	0%	1	5%	8	4%	1	4%	0	1%
Emergency Vehicle	0	0%	0	2%	3	1%	0	1%	1	4%
No DMV Match Found	2	15%	5	25%	58	26%	5	26%	6	27%
LASD Expired	0	0%	0	0%	7	3%	1	3%	0	0%
Other	0	0%	0	0%	3	1%	0	1%	0	0%
Total	13	100%	18	100%	220	100%	18	100%	21	100%
Controllable Non-Iss										
	Quantity	% Cont. Non	Quantity	% Cont. Non	Quantity	% Cont. Non	Quantity	% Cont. Non	Quantity	% Cont. Non
Framing of Plate	0	0%	0	0%	0	0%	0	0%	0	0%
Focus / Clarity of Plate	0	0%	0	0%	0	0%	0	0%	0	0%
Dark Interior	0	0%	1	57%	12	50%	1	50%	0	2%
Framing of Driver	0	0%	0	0%	0	0%	0	0%	0	0%
Focus / Clarity of Driver	0	0%	0	0%	0	0%	0	0%	0	0%
Framing of Car	0	0%	0	0%	0	0%	0	0%	0	0%
Data Error	0	0%	0	0%	0	0%	0	0%	0	0%
Exposure	0	0%	0	14%	2	8%	0	8%	0	6%
Equipment Malfunction	0	0%	0	0%	0	0%	0	0%	1	15%
LASD Return	0	0%	1	29%	10	42%	1	42%	3	76%
ACS Expired	0	0%	0	0%	0	0%	0	0%	0	2%
Total	0	100%	2	100%	24	100%	2	100%	5	100%



A Xerox Company

Los Angeles County MTA Orange Line Approach Summary Report Location 1361: NB Balboa Blvd @ Busway

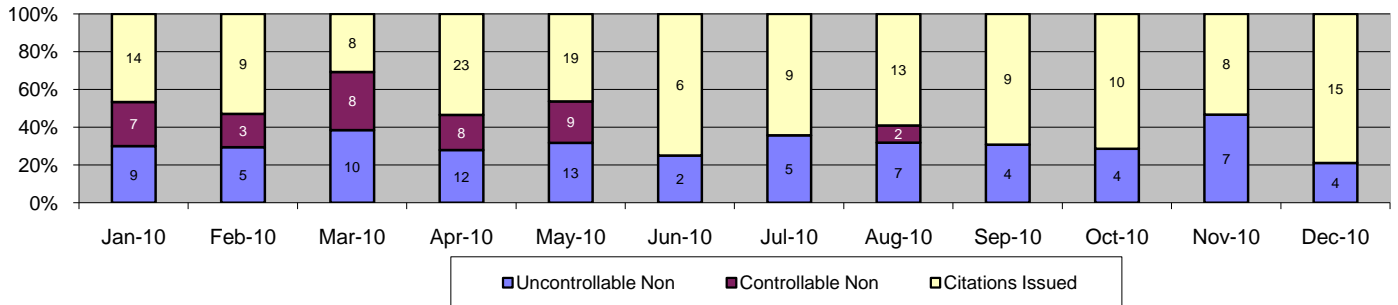


Events	Dec-10		3 Month Average		Year to Date Total		Year to Date Average		2009 Average	
	Quantity	% of Events	Quantity	% of Events	Quantity	% of Events	Quantity	% of Events	Quantity	% of Events
Non Violations	41	33%	25	26%	364	25%	30	25%	46	22%
Violations	84	67%	89	75%	1,115	75%	93	75%	145	78%
Total Events	125	100%	114	100%	1,479	100%	123	100%	191	100%
<i>Violations</i>										
	<i>Quantity</i>	<i>% of Viol</i>	<i>Quantity</i>	<i>% of Viol</i>	<i>Quantity</i>	<i>% of Viol</i>	<i>Quantity</i>	<i>% of Viol</i>	<i>Quantity</i>	<i>% of Viol</i>
Uncont. Non-Issued Viol	22	26%	30	33%	392	35%	33	35%	53	37%
Cont. Non-Issued Viol	8	10%	6	6%	45	4%	4	4%	13	9%
Citations	54	64%	54	60%	678	61%	57	61%	79	54%
Daily Av. Vehicle Counts	9,258		11,399		137,366		11,447		11,302	
Av. Violation Speed	26.2		27.5		26.7		26.7		26.5	
Av. Issued Speed	25.7		27.2		26.9		26.9		26.7	
Av. Violation Sec.	14.9		11.0		12.6		12.6		11.6	
Av. Issued Sec.	14.7		12.0		12.8		12.8		11.6	
Cal. Days/Enforc. Days	31	31	30	30	365	365	30	30	31	31
Daily Citation Yield	1.7	1.7	1.8	1.8	1.9	1.9	1.9	1.9	2.6	2.6
Cit/Viol. Iss. Rate	64%		60%		61%		61%		54%	
Controllable Iss. Rate	87%		91%		94%		94%		86%	
<i>Non - Violations</i>										
	<i>Quantity</i>	<i>% Non-Viol</i>	<i>Quantity</i>	<i>% Non-Viol</i>	<i>Quantity</i>	<i>% Non-Viol</i>	<i>Quantity</i>	<i>% Non-Viol</i>	<i>Quantity</i>	<i>% Non-Viol</i>
Rear Axle Violation	0	0%	0	1%	4	1%	0	1%	0	0%
Right Turn	0	0%	0	0%	1	0%	0	0%	0	0%
No Violation Occurred	41	100%	24	99%	359	99%	30	99%	46	22%
Total Non Violations	41	100%	25	100%	364	100%	30	100%	46	100%
<i>Uncontrollable Non-Iss</i>										
	<i>Quantity</i>	<i>% of Un.Non</i>	<i>Quantity</i>	<i>% of Un.Non</i>	<i>Quantity</i>	<i>% of Un.Non</i>	<i>Quantity</i>	<i>% of Un.Non</i>	<i>Quantity</i>	<i>% of Un.Non</i>
No Plate	9	41%	10	35%	136	35%	11	35%	21	40%
Out of State Plate	2	9%	2	6%	21	5%	2	5%	2	4%
Glare on Plate	0	0%	0	0%	0	0%	0	0%	0	1%
Illegible Plate	0	0%	0	0%	0	0%	0	0%	1	1%
Plate Obstructed	0	0%	0	1%	2	1%	0	1%	1	1%
Windshield Glare	2	9%	5	16%	70	18%	6	18%	12	23%
Driver Obstructed	2	9%	1	4%	13	3%	1	3%	2	3%
Car Obstructed	0	0%	0	0%	4	1%	0	1%	1	1%
Emergency Vehicle	3	14%	4	13%	47	12%	4	12%	3	5%
No DMV Match Found	4	18%	7	25%	92	23%	8	23%	10	20%
LASD Expired	0	0%	0	0%	6	2%	1	2%	1	1%
Other	0	0%	0	0%	1	0%	0	0%	0	0%
Total	22	100%	30	100%	392	100%	33	100%	53	100%
<i>Controllable Non-Iss</i>										
	<i>Quantity</i>	<i>% Cont. Non</i>	<i>Quantity</i>	<i>% Cont. Non</i>	<i>Quantity</i>	<i>% Cont. Non</i>	<i>Quantity</i>	<i>% Cont. Non</i>	<i>Quantity</i>	<i>% Cont. Non</i>
Framing of Plate	0	0%	0	0%	0	0%	0	0%	0	0%
Focus / Clarity of Plate	0	0%	0	0%	0	0%	0	0%	1	4%
Dark Interior	1	13%	4	65%	17	38%	1	38%	2	13%
Framing of Driver	0	0%	0	0%	0	0%	0	0%	0	3%
Focus / Clarity of Driver	0	0%	0	6%	1	2%	0	2%	0	1%
Framing of Car	0	0%	0	0%	0	0%	0	0%	0	1%
Data Error	0	0%	0	0%	0	0%	0	0%	0	0%
Exposure	0	0%	0	6%	2	4%	0	4%	0	0%
Equipment Malfunction	0	0%	0	0%	0	0%	0	0%	4	33%
LASD Return	7	88%	1	24%	25	56%	2	56%	6	45%
ACS Expired	0	0%	0	0%	0	0%	0	0%	0	1%
Total	8	100%	6	100%	45	100%	4	100%	13	100%



A xerox Company

Los Angeles County MTA Orange Line Approach Summary Report Location 1362: SB Balboa Blvd @ Busway

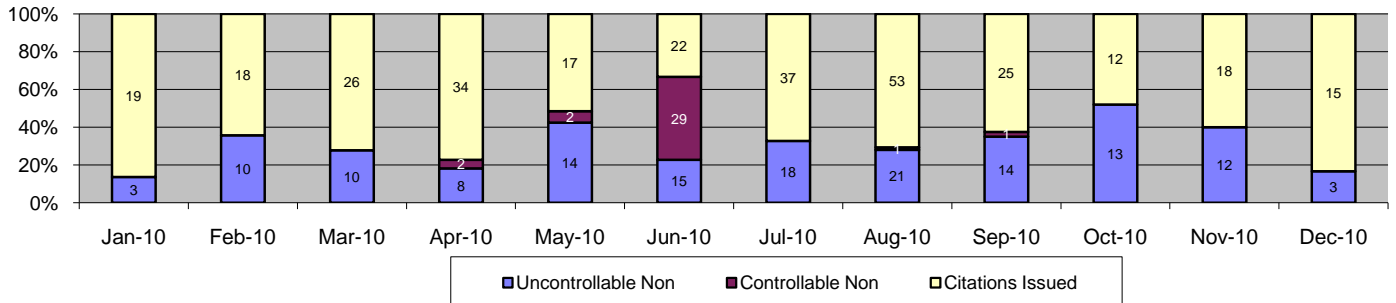


Events	Dec-10		3 Month Average		Year to Date Total		Year to Date Average		2009 Average	
	Quantity	% of Events	Quantity	% of Events	Quantity	% of Events	Quantity	% of Events	Quantity	% of Events
Non Violations	4	17%	3	13%	41	14%	3	14%	10	9%
Violations	19	83%	14	89%	262	86%	22	86%	32	91%
Total Events	23	100%	17	100%	303	100%	25	100%	41	100%
<i>Violations</i>										
	<i>Quantity</i>	<i>% of Viol</i>	<i>Quantity</i>	<i>% of Viol</i>	<i>Quantity</i>	<i>% of Viol</i>	<i>Quantity</i>	<i>% of Viol</i>	<i>Quantity</i>	<i>% of Viol</i>
Uncont. Non-Issued Viol	4	21%	5	36%	82	31%	7	31%	11	33%
Cont. Non-Issued Viol	0	0%	0	0%	37	14%	3	14%	3	9%
Citations	15	79%	9	64%	143	55%	12	55%	18	58%
Daily Av. Vehicle Counts	12,209		13,787		160,905		13,409		13,025	
Av. Violation Speed	25.4		27.2		28.4		28.4		28.4	
Av. Issued Speed	26.3		27.4		28.3		28.3		29.1	
Av. Violation Sec.	3.0		4.0		3.1		3.1		2.1	
Av. Issued Sec.	3.0		4.0		3.1		3.1		1.6	
Cal. Days/Enforc. Days	31	31	30	30	365	365	30	30	31	31
Daily Citation Yield	0.5	0.5	0.3	0.3	0.4	0.4	0.4	0.4	0.6	0.6
Cit /Viol. Iss. Rate	79%		64%		55%		55%		58%	
Controllable Iss. Rate	100%		100%		79%		79%		87%	
<i>Non - Violations</i>										
	<i>Quantity</i>	<i>% Non-Viol</i>	<i>Quantity</i>	<i>% Non-Viol</i>	<i>Quantity</i>	<i>% Non-Viol</i>	<i>Quantity</i>	<i>% Non-Viol</i>	<i>Quantity</i>	<i>% Non-Viol</i>
Rear Axle Violation	0	0%	0	0%	0	0%	0	0%	0	0%
Right Turn	0	0%	0	0%	0	0%	0	0%	0	0%
No Violation Occurred	4	100%	3	100%	41	100%	3	100%	10	9%
Total Non Violations	4	100%	3	100%	41	100%	3	100%	10	100%
<i>Uncontrollable Non-Iss</i>										
	<i>Quantity</i>	<i>% of Un.Non</i>	<i>Quantity</i>	<i>% of Un.Non</i>	<i>Quantity</i>	<i>% of Un.Non</i>	<i>Quantity</i>	<i>% of Un.Non</i>	<i>Quantity</i>	<i>% of Un.Non</i>
No Plate	0	0%	2	40%	25	30%	2	30%	4	37%
Out of State Plate	0	0%	0	7%	5	6%	0	6%	0	4%
Glare on Plate	0	0%	0	0%	0	0%	0	0%	1	8%
Illegible Plate	0	0%	0	0%	1	1%	0	1%	0	2%
Plate Obstructed	0	0%	1	13%	2	2%	0	2%	0	1%
Windshield Glare	1	25%	0	0%	13	16%	1	16%	2	16%
Driver Obstructed	0	0%	0	0%	0	0%	0	0%	0	3%
Car Obstructed	1	25%	0	0%	3	4%	0	4%	0	3%
Emergency Vehicle	0	0%	1	20%	12	15%	1	15%	1	6%
No DMV Match Found	2	50%	1	20%	21	26%	2	26%	2	20%
LASD Expired	0	0%	0	0%	0	0%	0	0%	0	1%
Other	0	0%	0	0%	0	0%	0	0%	0	0%
Total	4	100%	5	100%	82	100%	7	100%	11	100%
<i>Controllable Non-Iss</i>										
	<i>Quantity</i>	<i>% Cont. Non</i>	<i>Quantity</i>	<i>% Cont. Non</i>	<i>Quantity</i>	<i>% Cont. Non</i>	<i>Quantity</i>	<i>% Cont. Non</i>	<i>Quantity</i>	<i>% Cont. Non</i>
Framing of Plate	0	0%	0	0%	0	0%	0	0%	0	0%
Focus / Clarity of Plate	0	0%	0	0%	1	3%	0	3%	1	24%
Dark Interior	0	0%	0	0%	14	38%	1	38%	0	3%
Framing of Driver	0	0%	0	0%	0	0%	0	0%	0	0%
Focus / Clarity of Driver	0	0%	0	0%	1	3%	0	3%	0	6%
Framing of Car	0	0%	0	0%	0	0%	0	0%	0	0%
Data Error	0	0%	0	0%	0	0%	0	0%	0	3%
Exposure	0	0%	0	0%	0	0%	0	0%	0	3%
Equipment Malfunction	0	0%	0	0%	7	19%	1	19%	0	0%
LASD Return	0	0%	0	0%	14	38%	1	38%	2	62%
ACS Expired	0	0%	0	0%	0	0%	0	0%	0	0%
Total	0	100%	0	100%	37	100%	3	100%	3	100%



A xerox Company

Los Angeles County MTA Orange Line Approach Summary Report Location 1371: NB White Oak Ave @ Busway

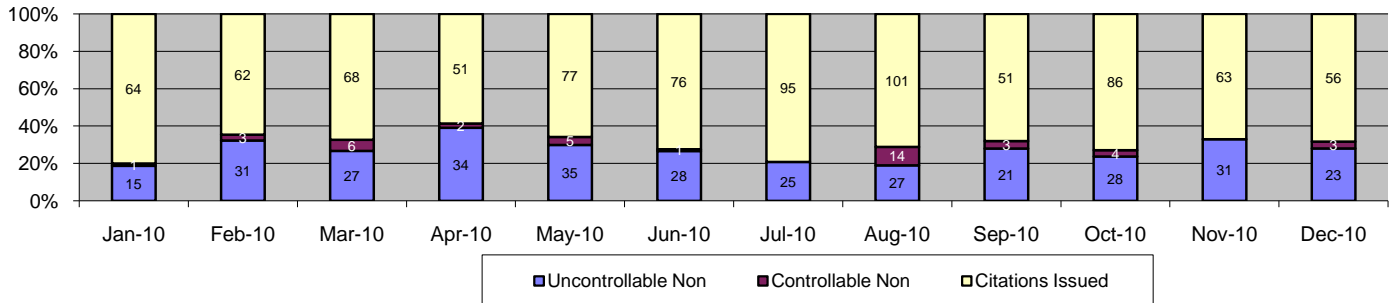


Events	Dec-10		3 Month Average		Year to Date Total		Year to Date Average		2009 Average	
	Quantity	% of Events	Quantity	% of Events	Quantity	% of Events	Quantity	% of Events	Quantity	% of Events
Non Violations	0	0%	3	12%	74	14%	6	14%	4	6%
Violations	18	100%	32	86%	472	86%	39	86%	36	94%
Total Events	18	100%	35	100%	546	100%	46	100%	40	100%
<i>Violations</i>										
	<i>Quantity</i>	<i>% of Viol</i>	<i>Quantity</i>	<i>% of Viol</i>	<i>Quantity</i>	<i>% of Viol</i>	<i>Quantity</i>	<i>% of Viol</i>	<i>Quantity</i>	<i>% of Viol</i>
Uncont. Non-Issued Viol	3	17%	13	41%	141	30%	12	30%	13	34%
Cont. Non-Issued Viol	0	0%	0	1%	35	7%	3	7%	3	7%
Citations	15	83%	18	58%	296	63%	25	63%	21	59%
Daily Av. Vehicle Counts	12,475		12,240		158,085		13,174		13,456	
Av. Violation Speed	18.6		19.6		19.3		19.3		19.1	
Av. Issued Speed	18.0		19.2		19.0		19.0		18.7	
Av. Violation Sec.	9.9		7.1		7.8		7.8		8.3	
Av. Issued Sec.	10.3		6.5		7.6		7.6		8.2	
Cal. Days/Enforc. Days	31	31	30	30	365	365	30	30	31	31
Daily Citation Yield	0.5	0.5	0.6	0.6	0.8	0.8	0.8	0.8	0.7	0.7
Cit/Viol. Iss. Rate	83%		58%		63%		63%		59%	
Controllable Iss. Rate	100%		98%		89%		89%		90%	
<i>Non - Violations</i>										
	<i>Quantity</i>	<i>% Non-Viol</i>	<i>Quantity</i>	<i>% Non-Viol</i>	<i>Quantity</i>	<i>% Non-Viol</i>	<i>Quantity</i>	<i>% Non-Viol</i>	<i>Quantity</i>	<i>% Non-Viol</i>
Rear Axle Violation	0	0%	1	20%	3	4%	0	4%	0	1%
Right Turn	0	0%	0	0%	0	0%	0	0%	0	0%
No Violation Occurred	0	0%	3	80%	71	96%	6	96%	4	6%
Total Non Violations	0	100%	3	100%	74	100%	6	100%	4	100%
<i>Uncontrollable Non-Iss</i>										
	<i>Quantity</i>	<i>% of Un.Non</i>	<i>Quantity</i>	<i>% of Un.Non</i>	<i>Quantity</i>	<i>% of Un.Non</i>	<i>Quantity</i>	<i>% of Un.Non</i>	<i>Quantity</i>	<i>% of Un.Non</i>
No Plate	3	100%	4	33%	52	37%	4	37%	5	38%
Out of State Plate	0	0%	0	0%	2	1%	0	1%	0	2%
Glare on Plate	0	0%	0	0%	0	0%	0	0%	0	0%
Illegible Plate	0	0%	0	0%	1	1%	0	1%	0	0%
Plate Obstructed	0	0%	1	5%	3	2%	0	2%	0	3%
Windshield Glare	0	0%	3	26%	34	24%	3	24%	4	33%
Driver Obstructed	0	0%	1	5%	4	3%	0	3%	0	2%
Car Obstructed	0	0%	0	3%	1	1%	0	1%	0	1%
Emergency Vehicle	0	0%	2	15%	16	11%	1	11%	0	3%
No DMV Match Found	0	0%	2	13%	23	16%	2	16%	2	17%
LASD Expired	0	0%	0	0%	5	4%	0	4%	0	1%
Other	0	0%	0	0%	0	0%	0	0%	0	0%
Total	3	100%	13	100%	141	100%	12	100%	13	100%
<i>Controllable Non-Iss</i>										
	<i>Quantity</i>	<i>% Cont. Non</i>	<i>Quantity</i>	<i>% Cont. Non</i>	<i>Quantity</i>	<i>% Cont. Non</i>	<i>Quantity</i>	<i>% Cont. Non</i>	<i>Quantity</i>	<i>% Cont. Non</i>
Framing of Plate	0	0%	0	0%	0	0%	0	0%	0	0%
Focus / Clarity of Plate	0	0%	0	0%	0	0%	0	0%	0	0%
Dark Interior	0	0%	0	100%	4	11%	0	11%	0	0%
Framing of Driver	0	0%	0	0%	0	0%	0	0%	0	0%
Focus / Clarity of Driver	0	0%	0	0%	0	0%	0	0%	0	0%
Framing of Car	0	0%	0	0%	0	0%	0	0%	0	0%
Data Error	0	0%	0	0%	0	0%	0	0%	0	0%
Exposure	0	0%	0	0%	0	0%	0	0%	0	0%
Equipment Malfunction	0	0%	0	0%	27	77%	2	77%	0	0%
LASD Return	0	0%	0	0%	3	9%	0	9%	3	100%
ACS Expired	0	0%	0	0%	1	3%	0	3%	0	0%
Total	0	100%	0	100%	35	100%	3	100%	3	100%



A xerox Company

Los Angeles County MTA Orange Line Approach Summary Report Location 1372: SB White Oak Ave @ Busway

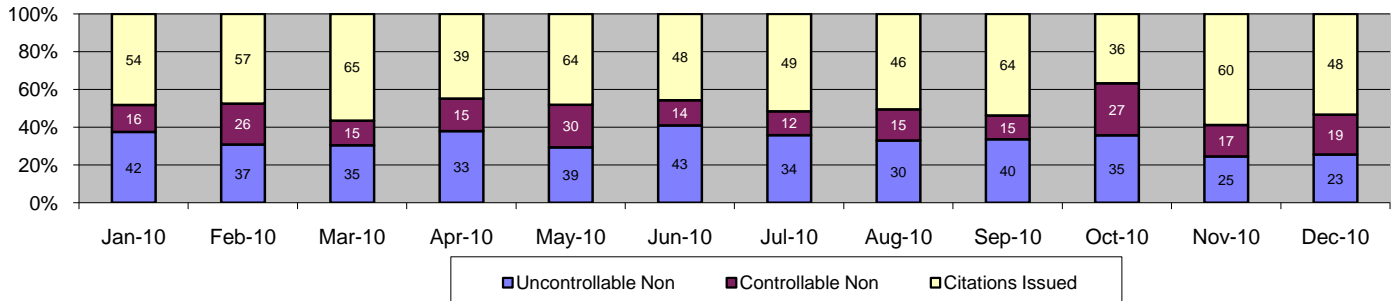


Events	Dec-10		3 Month Average		Year to Date Total		Year to Date Average		2009 Average	
	Quantity	% of Events	Quantity	% of Events	Quantity	% of Events	Quantity	% of Events	Quantity	% of Events
Non Violations	30	27%	22	16%	249	17%	21	17%	54	24%
Violations	82	73%	96	83%	1,217	83%	101	83%	134	76%
Total Events	112	100%	118	100%	1,466	100%	122	100%	188	100%
Violations										
	Quantity	% of Viol	Quantity	% of Viol	Quantity	% of Viol	Quantity	% of Viol	Quantity	% of Viol
Uncont. Non-Issued Viol	23	28%	27	28%	325	27%	27	27%	43	32%
Cont. Non-Issued Viol	3	4%	2	2%	42	3%	4	3%	5	3%
Citations	56	68%	67	70%	850	70%	71	70%	86	65%
Daily Av. Vehicle Counts	10,546		11,557		136,558		11,380		11,297	
Av. Violation Speed	33.9		32.2		33.2		33.2		33.4	
Av. Issued Speed	34.1		31.9		33.1		33.1		33.2	
Av. Violation Sec.	3.2		2.9		2.8		2.8		2.8	
Av. Issued Sec.	3.2		2.6		2.5		2.5		2.6	
Cal. Days/Enforc. Days	31	31	30	30	365	365	30	30	31	31
Daily Citation Yield	1.8	1.8	2.2	2.2	2.3	2.3	2.3	2.3	2.8	2.8
Cit/Viol. Iss. Rate	68%		70%		70%		70%		65%	
Controllable Iss. Rate	95%		97%		95%		95%		95%	
Non - Violations										
	Quantity	% Non-Viol	Quantity	% Non-Viol	Quantity	% Non-Viol	Quantity	% Non-Viol	Quantity	% Non-Viol
Rear Axle Violation	0	0%	0	0%	0	0%	0	0%	2	0%
Right Turn	1	3%	0	0%	1	0%	0	0%	0	0%
No Violation Occurred	29	97%	22	100%	248	100%	21	100%	52	24%
Total Non Violations	30	100%	22	100%	249	100%	21	100%	54	100%
Uncontrollable Non-Iss										
	Quantity	% of Un.Non	Quantity	% of Un.Non	Quantity	% of Un.Non	Quantity	% of Un.Non	Quantity	% of Un.Non
No Plate	11	48%	11	43%	140	43%	12	43%	24	55%
Out of State Plate	0	0%	1	5%	14	4%	1	4%	2	5%
Glare on Plate	0	0%	0	0%	1	0%	0	0%	0	0%
Illegible Plate	0	0%	0	1%	2	1%	0	1%	0	1%
Plate Obstructed	0	0%	0	0%	5	2%	0	2%	1	1%
Windshield Glare	0	0%	1	4%	20	6%	2	6%	2	4%
Driver Obstructed	3	13%	2	6%	19	6%	2	6%	2	6%
Car Obstructed	0	0%	1	3%	5	2%	0	2%	0	1%
Emergency Vehicle	3	13%	4	15%	46	14%	4	14%	4	9%
No DMV Match Found	6	26%	6	24%	69	21%	6	21%	8	18%
LASD Expired	0	0%	0	0%	3	1%	0	1%	0	1%
Other	0	0%	0	0%	1	0%	0	0%	0	0%
Total	23	100%	27	100%	325	100%	27	100%	43	100%
Controllable Non-Iss										
	Quantity	% Cont. Non	Quantity	% Cont. Non	Quantity	% Cont. Non	Quantity	% Cont. Non	Quantity	% Cont. Non
Framing of Plate	0	0%	0	0%	0	0%	0	0%	0	0%
Focus / Clarity of Plate	0	0%	0	0%	0	0%	0	0%	0	0%
Dark Interior	0	0%	1	57%	11	26%	1	26%	0	2%
Framing of Driver	0	0%	0	0%	0	0%	0	0%	0	0%
Focus / Clarity of Driver	0	0%	0	0%	1	2%	0	2%	0	4%
Framing of Car	0	0%	0	0%	2	5%	0	5%	0	2%
Data Error	0	0%	0	0%	0	0%	0	0%	0	0%
Exposure	0	0%	0	0%	5	12%	0	12%	0	0%
Equipment Malfunction	0	0%	0	0%	2	5%	0	5%	0	4%
LASD Return	3	100%	1	29%	20	48%	2	48%	4	87%
ACS Expired	0	0%	0	14%	1	2%	0	2%	0	2%
Total	3	100%	2	100%	42	100%	4	100%	5	100%



A xerox Company

Los Angeles County MTA Orange Line Approach Summary Report Location 1382: SB Lindley Ave @ Busway

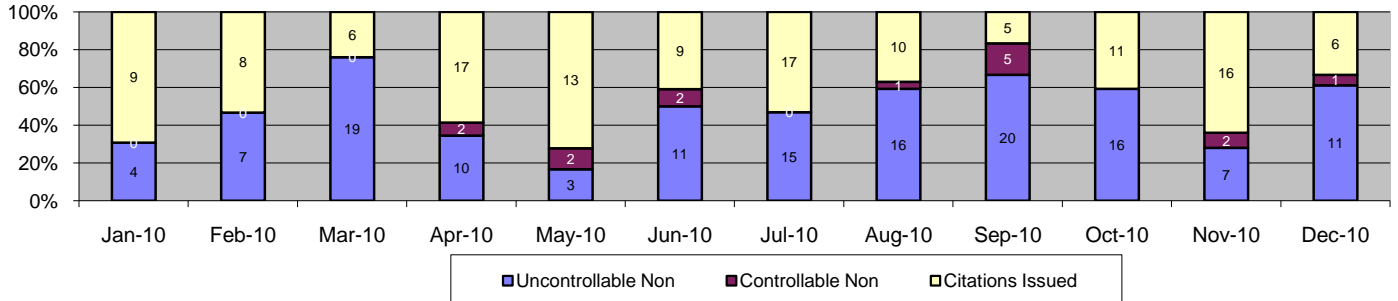


Events	Dec-10		3 Month Average		Year to Date Total		Year to Date Average		2007 Average	
	Quantity	% of Events	Quantity	% of Events	Quantity	% of Events	Quantity	% of Events	Quantity	% of Events
Non Violations	4	4%	9	65%	1,483	54%	124	54%	242	59%
Violations	90	96%	106	35%	1,267	46%	106	46%	160	41%
Total Events	94	100%	116	100%	2,750	100%	229	100%	402	100%
<i>Violations</i>										
	<i>Quantity</i>	<i>% of Viol</i>	<i>Quantity</i>	<i>% of Viol</i>	<i>Quantity</i>	<i>% of Viol</i>	<i>Quantity</i>	<i>% of Viol</i>	<i>Quantity</i>	<i>% of Viol</i>
Uncont. Non-Issued Viol	23	26%	33	31%	416	33%	35	33%	59	37%
Cont. Non-Issued Viol	19	21%	20	18%	221	17%	18	17%	36	22%
Citations	48	53%	53	50%	630	50%	53	50%	66	41%
Daily Av. Vehicle Counts	6,861		7,374		94,653		7,888		7,935	
Av. Violation Speed	32.6		31.9		31.5		31.5		31.2	
Av. Issued Speed	34.0		34.5		34.1		34.1		33.6	
Av. Violation Sec.	1.9		2.0		2.3		2.3		2.7	
Av. Issued Sec.	0.9		1.3		1.4		1.4		1.4	
Cal. Days/Enforc. Days	31	31	30	30	365	365	30	30	31	31
Daily Citation Yield	1.5	1.5	1.8	1.8	1.7	1.7	1.7	1.7	2.2	2.2
Cit /Viol. Iss. Rate	53%		50%		50%		50%		41%	
Controllable Iss. Rate	72%		73%		74%		74%		65%	
<i>Non - Violations</i>										
	<i>Quantity</i>	<i>% Non-Viol</i>	<i>Quantity</i>	<i>% Non-Viol</i>	<i>Quantity</i>	<i>% Non-Viol</i>	<i>Quantity</i>	<i>% Non-Viol</i>	<i>Quantity</i>	<i>% Non-Viol</i>
Rear Axle Violation	0	0%	0	0%	0	0%	0	0%	0	0%
Right Turn	0	0%	0	0%	0	0%	0	0%	0	0%
No Violation Occurred	4	100%	9	100%	1,483	100%	124	100%	241	58%
Total Non Violations	4	100%	9	100%	1,483	100%	124	100%	242	100%
<i>Uncontrollable Non-Iss</i>										
	<i>Quantity</i>	<i>% of Un.Non</i>	<i>Quantity</i>	<i>% of Un.Non</i>	<i>Quantity</i>	<i>% of Un.Non</i>	<i>Quantity</i>	<i>% of Un.Non</i>	<i>Quantity</i>	<i>% of Un.Non</i>
No Plate	12	52%	13	38%	158	38%	13	38%	26	44%
Out of State Plate	1	4%	3	9%	17	4%	1	4%	1	2%
Glare on Plate	1	4%	1	3%	6	1%	1	1%	3	5%
Illegible Plate	0	0%	0	1%	12	3%	1	3%	1	2%
Plate Obstructed	0	0%	0	1%	7	2%	1	2%	1	2%
Windshield Glare	5	22%	6	18%	85	20%	7	20%	13	21%
Driver Obstructed	0	0%	1	2%	7	2%	1	2%	2	4%
Car Obstructed	0	0%	0	0%	12	3%	1	3%	2	3%
Emergency Vehicle	2	9%	3	9%	33	8%	3	8%	2	3%
No DMV Match Found	2	9%	6	19%	69	17%	6	17%	8	14%
LASD Expired	0	0%	0	0%	9	2%	1	2%	0	0%
Other	0	0%	0	0%	1	0%	0	0%	0	0%
Total	23	100%	33	100%	416	100%	35	100%	59	100%
<i>Controllable Non-Iss</i>										
	<i>Quantity</i>	<i>% Cont. Non</i>	<i>Quantity</i>	<i>% Cont. Non</i>	<i>Quantity</i>	<i>% Cont. Non</i>	<i>Quantity</i>	<i>% Cont. Non</i>	<i>Quantity</i>	<i>% Cont. Non</i>
Framing of Plate	2	11%	2	10%	21	10%	2	10%	8	24%
Focus / Clarity of Plate	3	16%	1	5%	11	5%	1	5%	2	7%
Dark Interior	8	42%	10	49%	95	43%	8	43%	5	13%
Framing of Driver	0	0%	0	0%	3	1%	0	1%	2	6%
Focus / Clarity of Driver	0	0%	1	7%	13	6%	1	6%	2	6%
Framing of Car	1	5%	2	10%	21	10%	2	10%	3	8%
Data Error	0	0%	0	2%	1	0%	0	0%	0	0%
Exposure	0	0%	0	0%	1	0%	0	0%	0	0%
Equipment Malfunction	0	0%	2	10%	7	3%	1	3%	4	11%
LASD Return	5	26%	1	7%	48	22%	4	22%	8	24%
ACS Expired	0	0%	0	0%	0	0%	0	0%	0	1%
Total	19	100%	20	100%	221	100%	18	100%	36	100%



A xerox Company

Los Angeles County MTA Orange Line Approach Summary Report Location 1385: WB to NB Lindley Ave @ Busway

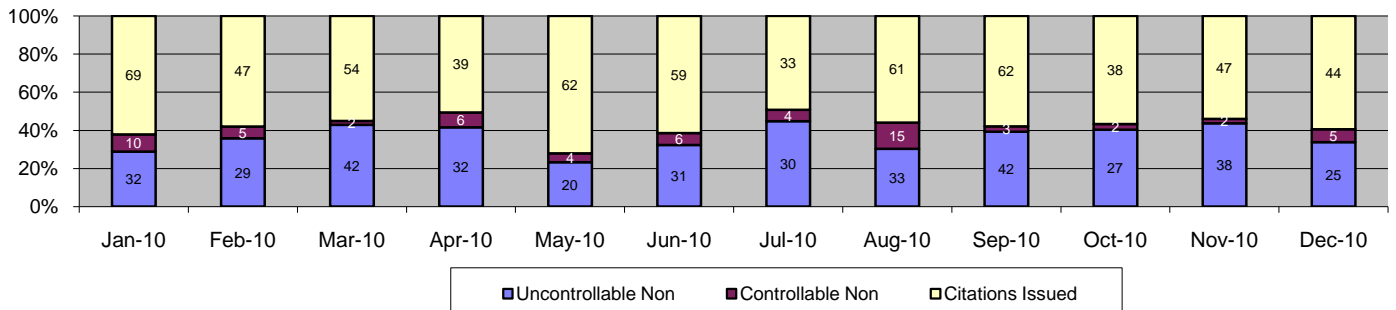


Events	Dec-10		3 Month Average		Year to Date Total		Year to Date Average		2009 Average		
	Quantity	% of Events	Quantity	% of Events	Quantity	% of Events	Quantity	% of Events	Quantity	% of Events	
Non Violations	2,761	99%	3,129	91%	22,196	99%	1,850	99%	322	96%	
Violations	18	1%	27	9%	281	1%	23	1%	15	4%	
Total Events	2,779	100%	3,156	100%	22,477	100%	1,873	100%	337	100%	
Violations		Quantity	% of Viol	Quantity	% of Viol	Quantity	% of Viol	Quantity	% of Viol	Quantity	% of Viol
Uncont. Non-Issued Viol	11	61%	14	52%	139	49%	12	49%	7	45%	
Cont. Non-Issued Viol	1	6%	2	9%	15	5%	1	5%	2	13%	
Citations	6	33%	11	39%	127	45%	11	45%	6	42%	
Daily Av. Vehicle Counts	433		485		5,897		491		487		
Av. Violation Speed	14.4		16.0		16.6		16.6		18.6		
Av. Issued Speed	17.0		18.7		18.0		18.0		18.6		
Av. Violation Sec.	60.0		54.9		53.0		53.0		49.7		
Av. Issued Sec.	52.7		56.1		48.6		48.6		49.7		
Cal. Days/Enforc. Days	31	31	30	30	365	365	30	30	31	31	
Daily Citation Yield	0.2	0.2	0.4	0.4	0.3	0.3	0.3	0.3	0.2	0.2	
Cit /Viol. Iss. Rate	33%		39%		45%		45%		42%		
Controllable Iss. Rate	86%		82%		89%		89%		76%		
Non - Violations	Dec-10		3 Month Average		Year to Date Total		Year to Date Average		2009 Average		
	Quantity	% Non-Viol	Quantity	% Non-Viol	Quantity	% Non-Viol	Quantity	% Non-Viol	Quantity	% Non-Viol	
Rear Axle Violation	0	0%	0	0%	0	0%	0	0%	0	0%	
Right Turn	0	0%	0	0%	25	0%	2	0%	0	0%	
No Violation Occurred	2,761	100%	3,129	100%	22,171	100%	1,848	100%	322	96%	
Total Non Violations	2,761	100%	3,129	100%	22,196	100%	1,850	100%	322	100%	
Uncontrollable Non-Iss		Quantity	% of Un.Non	Quantity	% of Un.Non	Quantity	% of Un.Non	Quantity	% of Un.Non	Quantity	% of Un.Non
No Plate	2	18%	5	35%	46	33%	4	33%	2	34%	
Out of State Plate	1	9%	0	2%	4	3%	0	3%	0	4%	
Glare on Plate	0	0%	0	0%	1	1%	0	1%	0	1%	
Illegible Plate	0	0%	0	2%	2	1%	0	1%	0	1%	
Plate Obstructed	0	0%	0	2%	3	2%	0	2%	0	0%	
Windshield Glare	0	0%	2	12%	18	13%	2	13%	1	19%	
Driver Obstructed	1	9%	2	12%	14	10%	1	10%	2	29%	
Car Obstructed	3	27%	4	30%	21	15%	2	15%	0	1%	
Emergency Vehicle	1	9%	0	2%	5	4%	0	4%	0	0%	
No DMV Match Found	3	27%	0	2%	13	9%	1	9%	1	10%	
LASD Expired	0	0%	0	0%	2	1%	0	1%	0	0%	
Other	0	0%	0	0%	10	7%	1	7%	0	0%	
Total	11	100%	14	100%	139	100%	12	100%	7	100%	
Controllable Non-Iss		Quantity	% Cont. Non	Quantity	% Cont. Non	Quantity	% Cont. Non	Quantity	% Cont. Non	Quantity	% Cont. Non
Framing of Plate	0	0%	0	0%	0	0%	0	0%	0	4%	
Focus / Clarity of Plate	0	0%	0	0%	0	0%	0	0%	0	22%	
Dark Interior	0	0%	1	29%	3	20%	0	20%	0	0%	
Framing of Driver	0	0%	0	0%	0	0%	0	0%	0	4%	
Focus / Clarity of Driver	0	0%	0	0%	0	0%	0	0%	0	9%	
Framing of Car	0	0%	0	14%	2	13%	0	13%	0	9%	
Data Error	0	0%	0	14%	2	13%	0	13%	0	0%	
Exposure	0	0%	1	43%	3	20%	0	20%	0	4%	
Equipment Malfunction	1	100%	0	0%	1	7%	0	7%	0	0%	
LASD Return	0	0%	0	0%	4	27%	0	27%	1	43%	
ACS Expired	0	0%	0	0%	0	0%	0	0%	0	4%	
Total	1	100%	2	100%	15	100%	1	100%	2	100%	



A xerox Company

Los Angeles County MTA Orange Line Approach Summary Report Location 1391: NB Reseda Blvd @ Busway

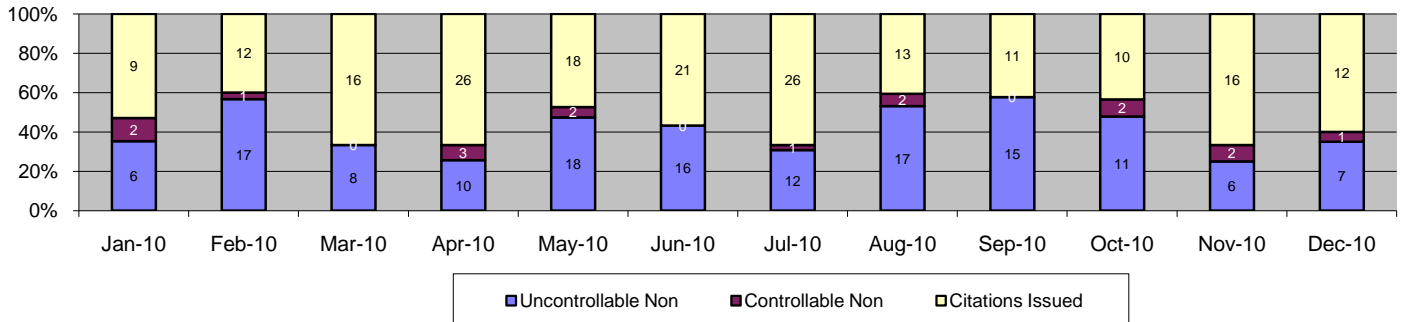


Events	Dec-10		3 Month Average		Year to Date Total		Year to Date Average		2009 Average	
	Quantity	% of Events	Quantity	% of Events	Quantity	% of Events	Quantity	% of Events	Quantity	% of Events
Non Violations	17	19%	15	16%	204	16%	17	16%	26	21%
Violations	74	81%	87	83%	1,060	84%	88	84%	126	79%
Total Events	91	100%	102	100%	1,264	100%	105	100%	152	100%
Violations										
	Quantity	% of Viol	Quantity	% of Viol	Quantity	% of Viol	Quantity	% of Viol	Quantity	% of Viol
Uncont. Non-Issued Viol	25	34%	36	41%	381	36%	32	36%	39	31%
Cont. Non-Issued Viol	5	7%	2	3%	64	6%	5	6%	28	22%
Citations	44	59%	49	56%	615	58%	51	58%	59	47%
Daily Av. Vehicle Counts	15,004		15,848		192,138		16,011		14,999	
Av. Violation Speed	20.2		21.1		20.9		20.9		20.7	
Av. Issued Speed	20.0		20.8		20.7		20.7		21.0	
Av. Violation Sec.	2.8		3.1		2.8		2.8		2.8	
Av. Issued Sec.	2.4		2.1		2.5		2.5		2.3	
Cal. Days/Enforc. Days	31	31	30	30	365	365	30	30	31	31
Daily Citation Yield	1.4	1.4	1.6	1.6	1.7	1.7	1.7	1.7	1.9	1.9
Cit/Viol. Iss. Rate	59%		56%		58%		58%		47%	
Controllable Iss. Rate	90%		95%		91%		91%		68%	
Non - Violations										
	Quantity	% Non-Viol	Quantity	% Non-Viol	Quantity	% Non-Viol	Quantity	% Non-Viol	Quantity	% Non-Viol
Rear Axle Violation	0	0%	0	0%	1	0%	0	0%	0	0%
Right Turn	0	0%	0	0%	1	0%	0	0%	0	0%
No Violation Occurred	17	100%	15	100%	202	99%	17	99%	26	21%
Total Non Violations	17	100%	15	100%	204	100%	17	100%	26	100%
Uncontrollable Non-Iss										
	Quantity	% of Un.Non	Quantity	% of Un.Non	Quantity	% of Un.Non	Quantity	% of Un.Non	Quantity	% of Un.Non
No Plate	10	40%	11	31%	119	31%	10	31%	15	39%
Out of State Plate	1	4%	1	2%	16	4%	1	4%	1	3%
Glare on Plate	0	0%	0	1%	3	1%	0	1%	0	1%
Illegible Plate	0	0%	0	0%	0	0%	0	0%	0	0%
Plate Obstructed	1	4%	0	0%	3	1%	0	1%	0	1%
Windshield Glare	5	20%	9	24%	73	19%	6	19%	9	23%
Driver Obstructed	0	0%	0	0%	17	4%	1	4%	2	6%
Car Obstructed	1	4%	2	7%	18	5%	2	5%	1	3%
Emergency Vehicle	3	12%	6	18%	43	11%	4	11%	3	7%
No DMV Match Found	4	16%	6	18%	83	22%	7	22%	6	16%
LASD Expired	0	0%	0	0%	6	2%	1	2%	0	1%
Other	0	0%	0	0%	0	0%	0	0%	0	0%
Total	25	100%	36	100%	381	100%	32	100%	39	100%
Controllable Non-Iss										
	Quantity	% Cont. Non	Quantity	% Cont. Non	Quantity	% Cont. Non	Quantity	% Cont. Non	Quantity	% Cont. Non
Framing of Plate	2	40%	1	29%	12	19%	1	19%	12	42%
Focus / Clarity of Plate	0	0%	1	29%	2	3%	0	3%	1	3%
Dark Interior	0	0%	0	14%	11	17%	1	17%	0	0%
Framing of Driver	0	0%	0	0%	5	8%	0	8%	5	19%
Focus / Clarity of Driver	2	40%	0	0%	6	9%	1	9%	1	3%
Framing of Car	0	0%	0	0%	7	11%	1	11%	4	15%
Data Error	0	0%	0	0%	0	0%	0	0%	0	1%
Exposure	0	0%	0	0%	5	8%	0	8%	0	0%
Equipment Malfunction	1	20%	0	0%	1	2%	0	2%	0	1%
LASD Return	0	0%	1	29%	14	22%	1	22%	4	16%
ACS Expired	0	0%	0	0%	1	2%	0	2%	0	0%
Total	5	100%	2	100%	64	100%	5	100%	28	100%



A xerox Company

Los Angeles County MTA Orange Line Approach Summary Report Location 1392: SB Reseda Blvd @ Busway

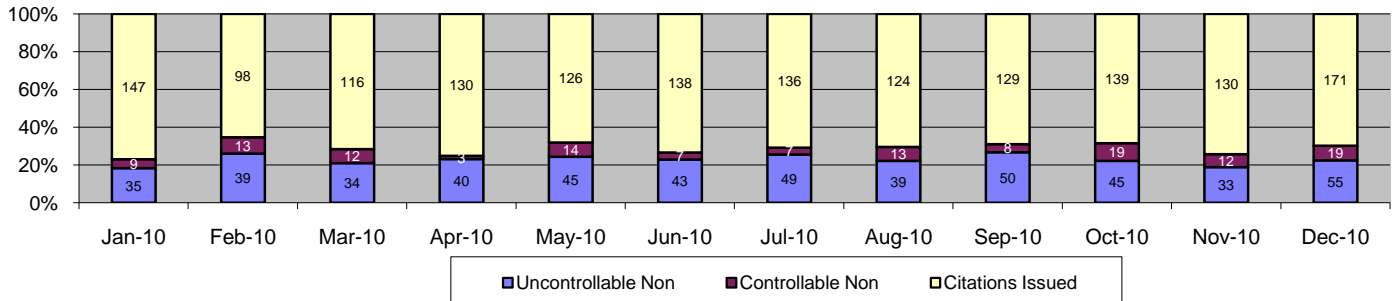


Events	Dec-10		3 Month Average		Year to Date Total		Year to Date Average		2009 Average		
	Quantity	% of Events	Quantity	% of Events	Quantity	% of Events	Quantity	% of Events	Quantity	% of Events	
Non Violations	6	23%	14	30%	147	30%	12	30%	14	26%	
Violations	20	77%	24	69%	349	70%	29	70%	34	74%	
Total Events	26	100%	38	100%	496	100%	41	100%	48	100%	
Violations		Quantity	% of Viol	Quantity	% of Viol	Quantity	% of Viol	Quantity	% of Viol	Quantity	% of Viol
Uncont. Non-Issued Viol	7	35%	11	44%	143	41%	12	41%	13	38%	
Cont. Non-Issued Viol	1	5%	1	5%	16	5%	1	5%	1	3%	
Citations	12	60%	12	51%	190	54%	16	54%	20	58%	
Daily Av. Vehicle Counts	14,507		15,210		186,180		15,515		15,099		
Av. Violation Speed	19.9		19.0		18.9		18.9		19.0		
Av. Issued Speed	19.7		18.6		18.6		18.6		18.7		
Av. Violation Sec.	13.1		16.9		16.0		16.0		14.6		
Av. Issued Sec.	14.6		18.0		16.3		16.3		14.3		
Cal. Days/Enforc. Days	31	31	30	30	365	365	30	30	31	31	
Daily Citation Yield	0.4	0.4	0.4	0.4	0.5	0.5	0.5	0.5	0.7	0.7	
Cit/Viol. Iss. Rate	60%		51%		54%		54%		58%		
Controllable Iss. Rate	92%		90%		92%		92%		94%		
Non - Violations	Dec-10		3 Month Average		Year to Date Total		Year to Date Average		2009 Average		
	Quantity	% Non-Viol	Quantity	% Non-Viol	Quantity	% Non-Viol	Quantity	% Non-Viol	Quantity	% Non-Viol	
Rear Axle Violation	0	0%	0	0%	0	0%	0	0%	0	0%	
Right Turn	0	0%	0	0%	0	0%	0	0%	0	0%	
No Violation Occurred	6	100%	14	100%	147	100%	12	100%	14	26%	
Total Non Violations	6	100%	14	100%	147	100%	12	100%	14	100%	
Uncontrollable Non-Iss		Quantity	% of Un.Non	Quantity	% of Un.Non	Quantity	% of Un.Non	Quantity	% of Un.Non	Quantity	% of Un.Non
No Plate	0	0%	4	34%	50	35%	4	35%	5	40%	
Out of State Plate	1	14%	1	9%	6	4%	1	4%	1	4%	
Glare on Plate	0	0%	0	0%	0	0%	0	0%	0	1%	
Illegible Plate	0	0%	0	0%	1	1%	0	1%	0	1%	
Plate Obstructed	0	0%	0	0%	1	1%	0	1%	0	1%	
Windshield Glare	1	14%	0	3%	8	6%	1	6%	1	5%	
Driver Obstructed	1	14%	0	3%	4	3%	0	3%	1	10%	
Car Obstructed	2	29%	2	19%	25	17%	2	17%	2	16%	
Emergency Vehicle	1	14%	1	13%	21	15%	2	15%	1	10%	
No DMV Match Found	1	14%	2	19%	27	19%	2	19%	1	9%	
LASD Expired	0	0%	0	0%	0	0%	0	0%	0	3%	
Other	0	0%	0	0%	0	0%	0	0%	0	0%	
Total	7	100%	11	100%	143	100%	12	100%	13	100%	
Controllable Non-Iss		Quantity	% Cont. Non	Quantity	% Cont. Non	Quantity	% Cont. Non	Quantity	% Cont. Non	Quantity	% Cont. Non
Framing of Plate	0	0%	0	25%	1	6%	0	6%	0	7%	
Focus / Clarity of Plate	0	0%	0	0%	0	0%	0	0%	0	0%	
Dark Interior	0	0%	1	50%	6	38%	1	38%	0	0%	
Framing of Driver	0	0%	0	0%	0	0%	0	0%	0	0%	
Focus / Clarity of Driver	0	0%	0	0%	0	0%	0	0%	0	0%	
Framing of Car	0	0%	0	0%	2	13%	0	13%	0	0%	
Data Error	0	0%	0	0%	0	0%	0	0%	0	7%	
Exposure	0	0%	0	0%	0	0%	0	0%	0	0%	
Equipment Malfunction	0	0%	0	0%	2	13%	0	13%	0	0%	
LASD Return	1	100%	0	0%	4	25%	0	25%	1	86%	
ACS Expired	0	0%	0	25%	1	6%	0	6%	0	0%	
Total	1	100%	1	100%	16	100%	1	100%	1	100%	



A xerox Company

Los Angeles County MTA Orange Line Approach Summary Report Location 1402: SB Mason Ave. @ Busway



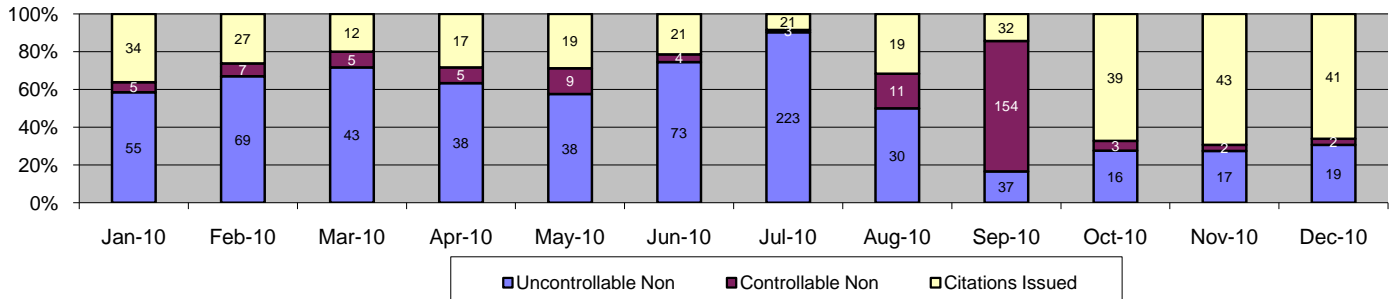
Events	Dec-10		3 Month Average		Year to Date Total		Year to Date Average		2009 Average	
	Quantity	% of Events	Quantity	% of Events	Quantity	% of Events	Quantity	% of Events	Quantity	% of Events
Non Violations	144	37%	111	40%	1,376	38%	115	38%	172	40%
Violations	245	63%	188	61%	2,227	62%	186	62%	279	60%
Total Events	389	100%	299	100%	3,603	100%	300	100%	451	100%
Violations										
	Quantity	% of Viol	Quantity	% of Viol	Quantity	% of Viol	Quantity	% of Viol	Quantity	% of Viol
Uncont. Non-Issued Viol	55	22%	43	23%	507	23%	42	23%	58	21%
Cont. Non-Issued Viol	19	8%	13	7%	136	6%	11	6%	33	12%
Citations	171	70%	133	70%	1,584	71%	132	71%	188	67%
Daily Av. Vehicle Counts	3,265		3,631		41,496		3,458		3,486	
Av. Violation Speed	20.3		20.7		20.6		20.6		21.0	
Av. Issued Speed	20.3		20.5		20.5		20.5		20.9	
Av. Violation Sec.	27.0		29.5		29.8		29.8		23.6	
Av. Issued Sec.	25.8		29.8		29.9		29.9		23.6	
Cal. Days/Enforc. Days	31	31	30	30	365	365	30	30	31	31
Daily Citation Yield	5.5	5.5	4.4	4.4	4.3	4.3	4.3	4.3	6.2	6.2
Cit/Viol. Iss. Rate	70%		70%		71%		71%		67%	
Controllable Iss. Rate	90%		91%		92%		92%		85%	
Non - Violations										
	Quantity	% Non-Viol	Quantity	% Non-Viol	Quantity	% Non-Viol	Quantity	% Non-Viol	Quantity	% Non-Viol
Rear Axle Violation	0	0%	0	0%	0	0%	0	0%	0	0%
Right Turn	0	0%	0	0%	0	0%	0	0%	0	0%
No Violation Occurred	144	100%	111	100%	1,376	100%	115	100%	172	40%
Total Non Violations	144	100%	111	100%	1,376	100%	115	100%	172	100%
Uncontrollable Non-Iss										
	Quantity	% of Un.Non	Quantity	% of Un.Non	Quantity	% of Un.Non	Quantity	% of Un.Non	Quantity	% of Un.Non
No Plate	8	15%	6	15%	92	18%	8	18%	14	25%
Out of State Plate	6	11%	2	5%	42	8%	4	8%	6	10%
Glare on Plate	1	2%	0	1%	7	1%	1	1%	1	2%
Illegible Plate	0	0%	0	0%	7	1%	1	1%	1	1%
Plate Obstructed	0	0%	0	0%	4	1%	0	1%	0	0%
Windshield Glare	6	11%	10	23%	88	17%	7	17%	10	17%
Driver Obstructed	12	22%	9	20%	107	21%	9	21%	7	12%
Car Obstructed	1	2%	0	1%	3	1%	0	1%	0	0%
Emergency Vehicle	4	7%	3	8%	34	7%	3	7%	4	7%
No DMV Match Found	16	29%	11	27%	118	23%	10	23%	14	25%
LASD Expired	1	2%	0	0%	5	1%	0	1%	0	1%
Other	0	0%	0	0%	0	0%	0	0%	0	0%
Total	55	100%	43	100%	507	100%	42	100%	58	100%
Controllable Non-Iss										
	Quantity	% Cont. Non	Quantity	% Cont. Non	Quantity	% Cont. Non	Quantity	% Cont. Non	Quantity	% Cont. Non
Framing of Plate	0	0%	0	0%	0	0%	0	0%	0	1%
Focus / Clarity of Plate	0	0%	0	0%	0	0%	0	0%	1	3%
Dark Interior	9	47%	10	77%	77	57%	6	57%	9	26%
Framing of Driver	0	0%	0	0%	0	0%	0	0%	2	6%
Focus / Clarity of Driver	0	0%	1	5%	7	5%	1	5%	0	1%
Framing of Car	0	0%	0	0%	0	0%	0	0%	0	0%
Data Error	0	0%	0	0%	0	0%	0	0%	0	0%
Exposure	0	0%	0	0%	0	0%	0	0%	0	0%
Equipment Malfunction	0	0%	0	0%	4	3%	0	3%	2	6%
LASD Return	10	53%	2	18%	48	35%	4	35%	18	55%
ACS Expired	0	0%	0	0%	0	0%	0	0%	0	0%
Total	19	100%	13	100%	136	100%	11	100%	33	100%



A Xerox Company

Los Angeles County MTA Orange Line Approach Summary Report

Location 1405: WB to NB Mason Ave. @ Victory Blvd.

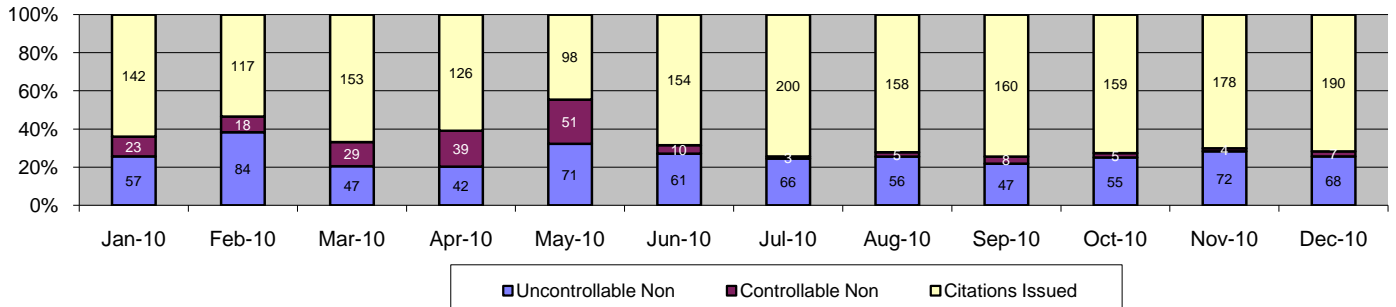


Events	Dec-10		3 Month Average		Year to Date Total		Year to Date Average		2009 Average	
	Quantity	% of Events	Quantity	% of Events	Quantity	% of Events	Quantity	% of Events	Quantity	% of Events
Non Violations	1,523	96%	1,639	77%	12,026	91%	1,002	91%	264	87%
Violations	62	4%	114	22%	1,193	9%	99	9%	63	13%
Total Events	1,585	100%	1,753	100%	13,219	100%	1,102	100%	326	100%
Violations										
	Quantity	% of Viol	Quantity	% of Viol	Quantity	% of Viol	Quantity	% of Viol	Quantity	% of Viol
Uncont. Non-Issued Viol	19	31%	23	20%	658	55%	55	55%	21	33%
Cont. Non-Issued Viol	2	3%	53	46%	210	18%	18	18%	22	34%
Citations	41	66%	38	33%	325	27%	27	27%	21	33%
Daily Av. Vehicle Counts	1,612		1,706		18,893		1,574		1,516	
Av. Violation Speed	17.0		15.6		11.5		11.5		11.5	
Av. Issued Speed	17.3		16.8		17.0		17.0		17.8	
Av. Violation Sec.	13.7		13.1		14.0		14.0		11.4	
Av. Issued Sec.	14.2		12.7		14.2		14.2		10.3	
Cal. Days/Enforc. Days	31	31	30	30	365	365	30	30	31	31
Daily Citation Yield	1.3	1.3	1.3	1.3	0.9	0.9	0.9	0.9	0.7	0.7
Cit/Viol. Iss. Rate	66%		33%		27%		27%		33%	
Controllable Iss. Rate	95%		42%		61%		61%		49%	
Non - Violations										
	Quantity	% Non-Viol	Quantity	% Non-Viol	Quantity	% Non-Viol	Quantity	% Non-Viol	Quantity	% Non-Viol
Rear Axle Violation	2	0%	4	0%	63	1%	5	1%	0	0%
Right Turn	0	0%	0	0%	0	0%	0	0%	0	0%
No Violation Occurred	1,521	100%	1,635	100%	11,963	99%	997	99%	263	87%
Total Non Violations	1,523	100%	1,639	100%	12,026	100%	1,002	100%	264	100%
Uncontrollable Non-Iss										
	Quantity	% of Un.Non	Quantity	% of Un.Non	Quantity	% of Un.Non	Quantity	% of Un.Non	Quantity	% of Un.Non
No Plate	13	68%	8	34%	90	14%	8	14%	6	27%
Out of State Plate	1	5%	0	0%	6	1%	1	1%	1	3%
Glare on Plate	0	0%	0	1%	2	0%	0	0%	0	1%
Illegible Plate	0	0%	0	0%	3	0%	0	0%	0	1%
Plate Obstructed	0	0%	0	1%	7	1%	1	1%	1	3%
Windshield Glare	0	0%	5	20%	50	8%	4	8%	5	26%
Driver Obstructed	1	5%	3	14%	22	3%	2	3%	2	9%
Car Obstructed	0	0%	2	9%	12	2%	1	2%	0	0%
Emergency Vehicle	0	0%	0	1%	2	0%	0	0%	0	0%
No DMV Match Found	4	21%	4	19%	35	5%	3	5%	3	13%
LASD Expired	0	0%	0	0%	7	1%	1	1%	0	0%
Other	0	0%	0	0%	422	64%	35	64%	3	16%
Total	19	100%	23	100%	658	100%	55	100%	21	100%
Controllable Non-Iss										
	Quantity	% Cont. Non	Quantity	% Cont. Non	Quantity	% Cont. Non	Quantity	% Cont. Non	Quantity	% Cont. Non
Framing of Plate	0	0%	0	0%	1	0%	0	0%	0	1%
Focus / Clarity of Plate	0	0%	0	0%	1	0%	0	0%	1	4%
Dark Interior	1	50%	2	3%	13	6%	1	6%	0	1%
Framing of Driver	0	0%	0	0%	0	0%	0	0%	0	1%
Focus / Clarity of Driver	0	0%	0	0%	3	1%	0	1%	0	2%
Framing of Car	0	0%	0	0%	8	4%	1	4%	1	3%
Data Error	0	0%	0	0%	10	5%	1	5%	17	77%
Exposure	0	0%	50	95%	154	73%	13	73%	0	0%
Equipment Malfunction	0	0%	0	0%	0	0%	0	0%	0	0%
LASD Return	1	50%	1	2%	20	10%	2	10%	2	11%
ACS Expired	0	0%	0	0%	0	0%	0	0%	0	0%
Total	2	100%	53	100%	210	100%	18	100%	22	100%



A xerox Company

Los Angeles County MTA Orange Line Approach Summary Report Location 1412: SB De Soto Ave @ Busway

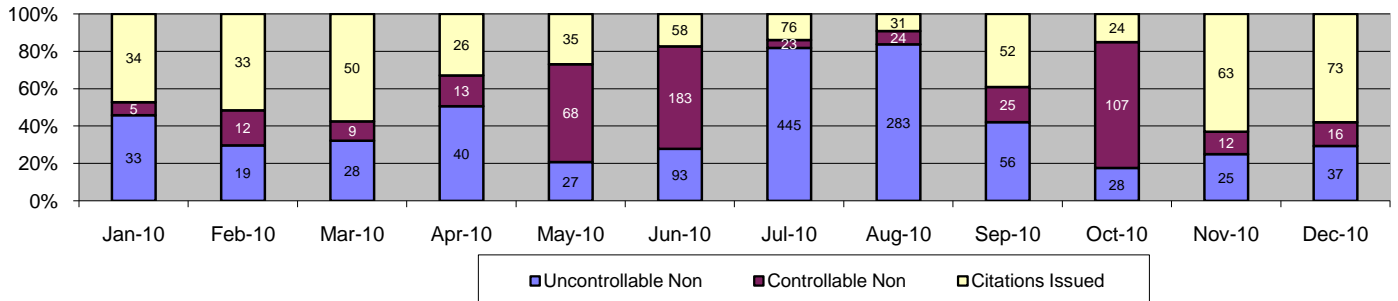


Events	Dec-10		3 Month Average		Year to Date Total		Year to Date Average		2009 Average	
	Quantity	% of Events	Quantity	% of Events	Quantity	% of Events	Quantity	% of Events	Quantity	% of Events
Non Violations	28	10%	30	11%	340	11%	28	11%	38	13%
Violations	265	90%	229	89%	2,763	89%	230	89%	314	87%
Total Events	293	100%	259	100%	3,103	100%	259	100%	353	100%
<i>Violations</i>										
	<i>Quantity</i>	<i>% of Viol</i>	<i>Quantity</i>	<i>% of Viol</i>	<i>Quantity</i>	<i>% of Viol</i>	<i>Quantity</i>	<i>% of Viol</i>	<i>Quantity</i>	<i>% of Viol</i>
Uncont. Non-Issued Viol	68	26%	58	25%	726	26%	61	26%	97	31%
Cont. Non-Issued Viol	7	3%	6	2%	202	7%	17	7%	33	10%
Citations	190	72%	166	72%	1,835	66%	153	66%	185	59%
Daily Av. Vehicle Counts	13,148		13,924		161,736		13,478		12,551	
Av. Violation Speed	23.0		24.2		24.1		24.1		24.0	
Av. Issued Speed	22.5		24.2		23.5		23.5		23.2	
Av. Violation Sec.	10.3		9.8		9.5		9.5		9.5	
Av. Issued Sec.	9.7		8.9		9.0		9.0		8.9	
Cal. Days/Enforc. Days	31	31	30	30	365	365	30	30	31	31
Daily Citation Yield	6.1	6.1	5.5	5.5	5.0	5.0	5.0	5.0	6.1	6.1
Cit/Viol. Iss. Rate	72%		72%		66%		66%		59%	
Controllable Iss. Rate	96%		97%		90%		90%		85%	
<i>Non - Violations</i>										
	<i>Quantity</i>	<i>% Non-Viol</i>	<i>Quantity</i>	<i>% Non-Viol</i>	<i>Quantity</i>	<i>% Non-Viol</i>	<i>Quantity</i>	<i>% Non-Viol</i>	<i>Quantity</i>	<i>% Non-Viol</i>
Rear Axle Violation	1	4%	0	0%	8	2%	1	2%	1	0%
Right Turn	0	0%	0	1%	1	0%	0	0%	0	0%
No Violation Occurred	27	96%	30	99%	331	97%	28	97%	37	13%
Total Non Violations	28	100%	30	100%	340	100%	28	100%	38	100%
<i>Uncontrollable Non-Iss</i>										
	<i>Quantity</i>	<i>% of Un.Non</i>	<i>Quantity</i>	<i>% of Un.Non</i>	<i>Quantity</i>	<i>% of Un.Non</i>	<i>Quantity</i>	<i>% of Un.Non</i>	<i>Quantity</i>	<i>% of Un.Non</i>
No Plate	14	21%	9	16%	91	13%	8	13%	19	19%
Out of State Plate	7	10%	7	12%	82	11%	7	11%	8	8%
Glare on Plate	0	0%	2	3%	10	1%	1	1%	1	1%
Illegible Plate	0	0%	0	0%	9	1%	1	1%	1	1%
Plate Obstructed	1	1%	1	2%	13	2%	1	2%	1	1%
Windshield Glare	5	7%	3	5%	56	8%	5	8%	6	6%
Driver Obstructed	12	18%	6	10%	101	14%	8	14%	22	22%
Car Obstructed	0	0%	0	1%	10	1%	1	1%	1	1%
Emergency Vehicle	17	25%	14	25%	147	20%	12	20%	17	17%
No DMV Match Found	12	18%	15	26%	190	26%	16	26%	22	22%
LASD Expired	0	0%	0	0%	14	2%	1	2%	1	1%
Other	0	0%	0	1%	3	0%	0	0%	0	0%
Total	68	100%	58	100%	726	100%	61	100%	97	100%
<i>Controllable Non-Iss</i>										
	<i>Quantity</i>	<i>% Cont. Non</i>	<i>Quantity</i>	<i>% Cont. Non</i>	<i>Quantity</i>	<i>% Cont. Non</i>	<i>Quantity</i>	<i>% Cont. Non</i>	<i>Quantity</i>	<i>% Cont. Non</i>
Framing of Plate	0	0%	0	0%	1	0%	0	0%	1	3%
Focus / Clarity of Plate	0	0%	0	6%	2	1%	0	1%	1	4%
Dark Interior	2	29%	2	29%	23	11%	2	11%	0	0%
Framing of Driver	0	0%	0	0%	2	1%	0	1%	7	22%
Focus / Clarity of Driver	1	14%	1	18%	42	21%	4	21%	3	8%
Framing of Car	0	0%	0	0%	1	0%	0	0%	0	0%
Data Error	0	0%	0	0%	1	0%	0	0%	0	1%
Exposure	0	0%	1	24%	7	3%	1	3%	0	1%
Equipment Malfunction	1	14%	0	0%	11	5%	1	5%	3	10%
LASD Return	3	43%	1	18%	109	54%	9	54%	16	51%
ACS Expired	0	0%	0	6%	3	1%	0	1%	0	1%
Total	7	100%	6	100%	202	100%	17	100%	33	100%



A Xerox Company

Los Angeles County MTA Orange Line Approach Summary Report Location 1415: WB to NB De Soto Ave. @ Busway



Events	Dec-10		3 Month Average		Year to Date Total		Year to Date Average		2009 Average	
	Quantity	% of Events	Quantity	% of Events	Quantity	% of Events	Quantity	% of Events	Quantity	% of Events
Non Violations	605	83%	605	54%	6,650	75%	554	75%	131	73%
Violations	126	17%	131	44%	2,166	25%	181	25%	96	27%
Total Events	731	100%	735	100%	8,816	100%	735	100%	227	100%
Violations										
	Quantity	% of Viol	Quantity	% of Viol	Quantity	% of Viol	Quantity	% of Viol	Quantity	% of Viol
Uncont. Non-Issued Viol	37	29%	36	28%	1,114	51%	93	51%	19	20%
Cont. Non-Issued Viol	16	13%	48	37%	497	23%	41	23%	66	68%
Citations	73	58%	46	35%	555	26%	46	26%	12	12%
Daily Av. Vehicle Counts	1,035		1,103		14,123		1,177		910	
Av. Violation Speed	15.4		14.7		18.7		18.7		9.6	
Av. Issued Speed	15.1		15.2		15.9		15.9		16.0	
Av. Violation Sec.	16.0		14.9		15.2		15.2		13.5	
Av. Issued Sec.	13.9		13.7		14.5		14.5		11.1	
Cal. Days/Enforc. Days	31	31	30	30	365	365	30	30	31	31
Daily Citation Yield	2.4	2.4	1.5	1.5	1.5	1.5	1.5	1.5	0.4	0.4
Cit/Viol. Iss. Rate	58%		35%		26%		26%		12%	
Controllable Iss. Rate	82%		49%		53%		53%		15%	
Non - Violations										
	Quantity	% Non-Viol	Quantity	% Non-Viol	Quantity	% Non-Viol	Quantity	% Non-Viol	Quantity	% Non-Viol
Rear Axle Violation	9	1%	3	0%	103	2%	9	2%	0	0%
Right Turn	0	0%	0	0%	2	0%	0	0%	2	0%
No Violation Occurred	596	99%	602	100%	6,545	98%	545	98%	129	73%
Total Non Violations	605	100%	605	100%	6,650	100%	554	100%	131	100%
Uncontrollable Non-Iss										
	Quantity	% of Un.Non	Quantity	% of Un.Non	Quantity	% of Un.Non	Quantity	% of Un.Non	Quantity	% of Un.Non
No Plate	14	38%	12	32%	127	11%	11	11%	5	26%
Out of State Plate	3	8%	2	6%	25	2%	2	2%	0	1%
Glare on Plate	1	3%	0	0%	3	0%	0	0%	1	4%
Illegible Plate	0	0%	0	1%	6	1%	1	1%	0	1%
Plate Obstructed	1	3%	0	1%	4	0%	0	0%	0	1%
Windshield Glare	4	11%	9	25%	128	11%	11	11%	4	19%
Driver Obstructed	3	8%	2	5%	23	2%	2	2%	1	4%
Car Obstructed	1	3%	1	3%	17	2%	1	2%	0	1%
Emergency Vehicle	4	11%	2	5%	13	1%	1	1%	0	0%
No DMV Match Found	6	16%	3	9%	59	5%	5	5%	2	9%
LASD Expired	0	0%	0	0%	5	0%	0	0%	0	0%
Other	0	0%	5	14%	704	63%	59	63%	6	33%
Total	37	100%	36	100%	1,114	100%	93	100%	19	100%
Controllable Non-Iss										
	Quantity	% Cont. Non	Quantity	% Cont. Non	Quantity	% Cont. Non	Quantity	% Cont. Non	Quantity	% Cont. Non
Framing of Plate	0	0%	1	1%	3	1%	0	1%	1	1%
Focus / Clarity of Plate	3	19%	1	1%	7	1%	1	1%	0	0%
Dark Interior	9	56%	7	15%	62	12%	5	12%	1	1%
Framing of Driver	0	0%	0	0%	1	0%	0	0%	2	2%
Focus / Clarity of Driver	0	0%	1	3%	7	1%	1	1%	0	0%
Framing of Car	1	6%	3	6%	29	6%	2	6%	9	14%
Data Error	0	0%	0	0%	4	1%	0	1%	52	79%
Exposure	0	0%	1	1%	9	2%	1	2%	0	0%
Equipment Malfunction	0	0%	31	65%	315	63%	26	63%	0	0%
LASD Return	3	19%	4	8%	60	12%	5	12%	1	2%
ACS Expired	0	0%	0	0%	0	0%	0	0%	0	0%
Total	16	100%	48	100%	497	100%	41	100%	66	100%

Calls For Information

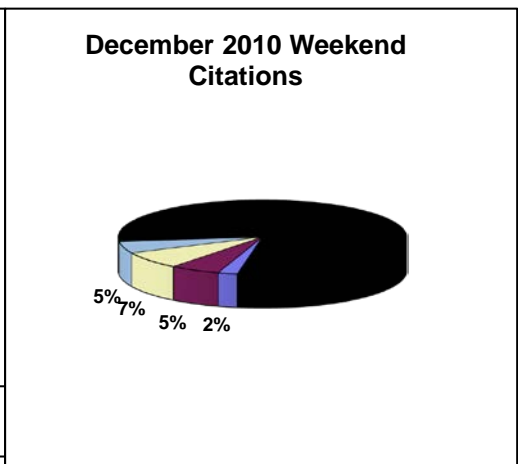
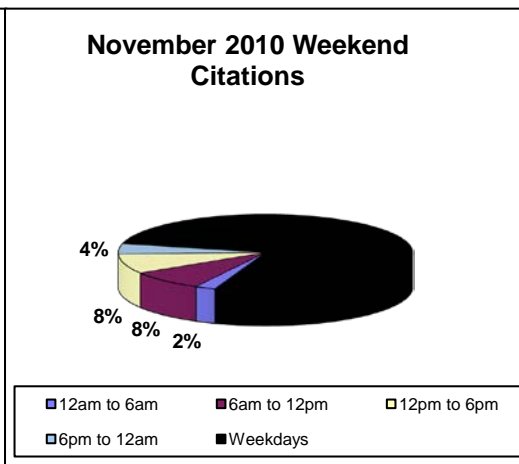
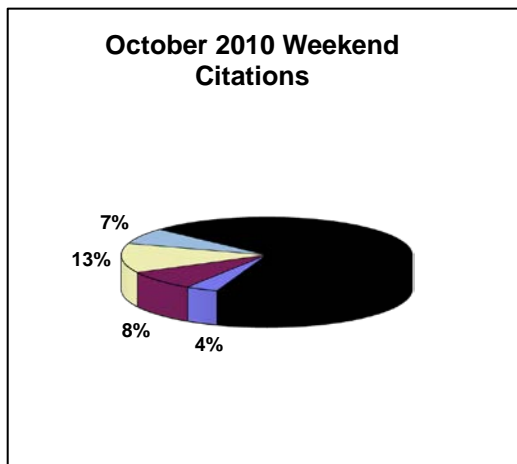
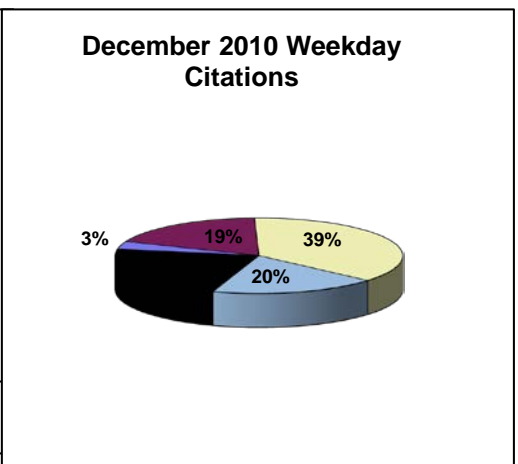
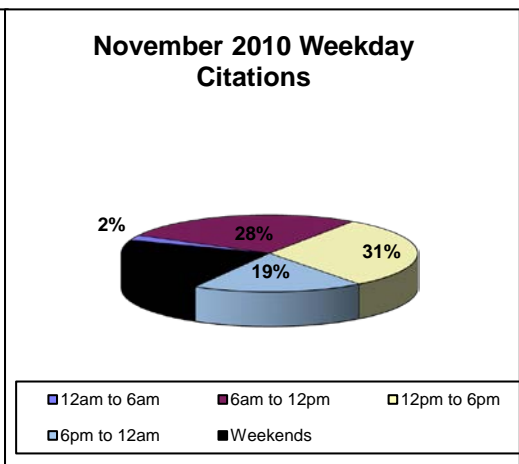
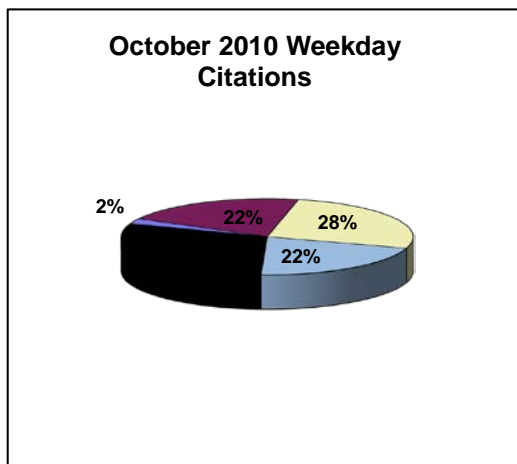
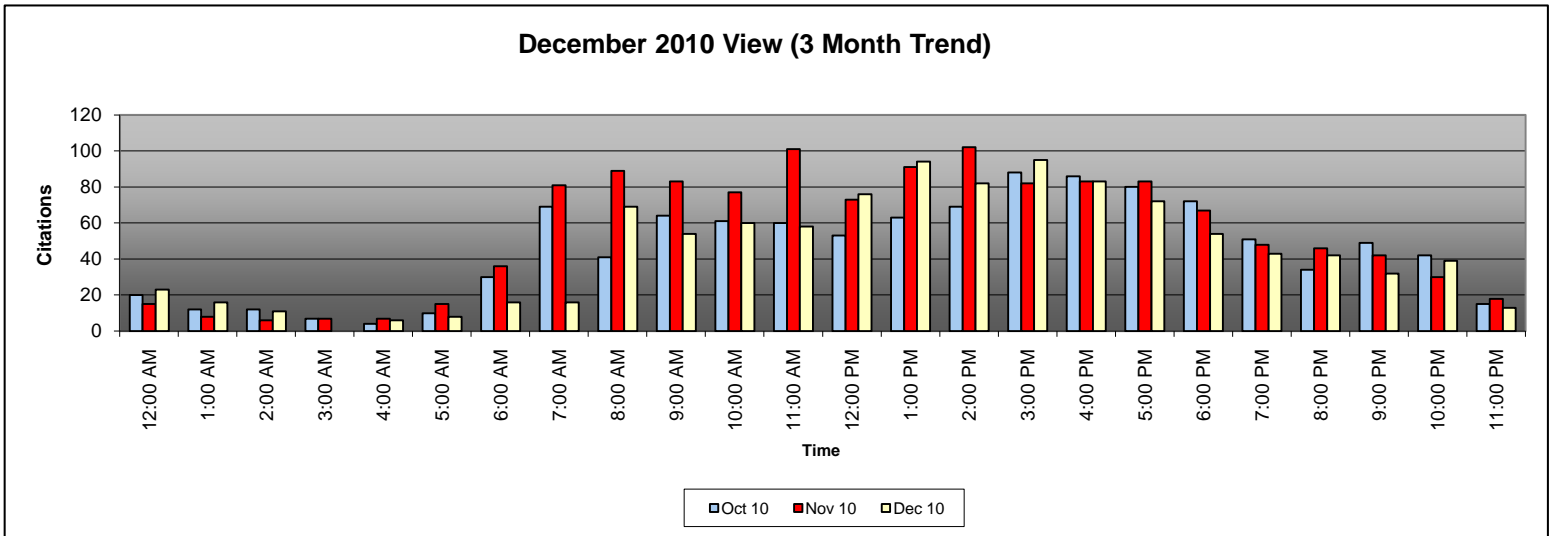
Reason for Call	Dec-10	3 Month Average	Year to Date Average	Year to Date Total	2009 Average
<i>Appointment</i>	12	23	29	348	44
<i>Bail</i>	48	45	46	553	67
<i>Complaint</i>	0	0	0	4	0
<i>Contest Violation</i>	59	49	44	532	46
<i>Courtesy Notice</i>		0	0	0	0
<i>Explain Citation</i>	9	6	10	124	11
<i>Explain Court</i>	0	0	0	5	1
<i>Explain the Project</i>	0	0	2	19	0
<i>Extension</i>	29	21	17	206	20
<i>Other</i>	0	0	0	1	0
<i>Affidavit of Non-Liability</i>	32	48	42	506	51
<i>Affidavit of Non-Liability Status</i>	6	4	4	49	4
<i>Traffic School</i>	17	20	18	212	26
Total Calls	212	217	213	2559	270
Appointments Scheduled	12	25	28	334	37
Affidavits of Non-Liability Processed	227	219	232	2556	256
Court Packets Prepared	178	169	171	2051	201

DATE	1301	1302	1313	1314	1321	1322	1331	1332	1341	1342	1351	1352	1361	1362	1371	1372	1382	1385	1391	1392	1402	1405	1412	1415	Total
12/01/2010	2	1		2	1	1	1	1		1	1	1	3	1	1	1	3	1	2		4		9	4	41
12/02/2010			2			2			3	1	3	4				1	5		1		3	5	9	3	42
12/03/2010		1		2		2	1		3	4	2	1				3	2	1	2		6		7	4	41
12/04/2010		1	5					1	5	1	2	1			1	2	1		1		5	1	6	1	34
12/05/2010	2		1			2					1	1	2		2	2	1	1	1	1	4	1	5		27
12/06/2010		1	3			3			2	1			4		1	2			2	1	2	1	2	3	28
12/07/2010	1		1		1	3	1	4	5		1	4			2	1	2		1		4	2	2	2	37
12/08/2010	3	1	1		1	1		3	3	2	2		1			2	1		2		6		7	1	37
12/09/2010		1	1		1	1		3	4	3	1	2	2	2		3	4		2	1	5	1	7	3	47
12/10/2010	1	1		3	1	1		2	2	8	3	2		1		2			3		5	2	4	5	46
12/11/2010			4			3	1	2	4		3		1			3	2		2	1	8	2	9	1	46
12/12/2010		1		1		2			5	1	4				1	2	1	1			6		4	2	31
12/13/2010	1	1				2		7	2	3	1	3		1	1	1	6		2		6	3	3	3	46
12/14/2010		1				2		4	4	3		1	2	1		2	1				2	1	3	5	32
12/15/2010	1			4		4	1			2			2				1		4		4	1	10	2	36
12/16/2010	2	1			1	2	2	3	6	1	3	1	2	2	2		3		4	1	9	1	5	4	55
12/17/2010			2	1		6	1	3	6	1	1	1	4			2	4		2	1	6	1	11	3	56
12/18/2010	3	1			1	2					2		5	1		3			1		2		18	1	40
12/19/2010		1				2		2	1		1		2			1			2		3		7	6	28
12/20/2010			2					1	3	4			3			1	2		1		7	1	6	2	33
12/21/2010			2			3		2	2	2	1		2			2	1		3		2	1	3	3	27
12/22/2010	1		1			1	1	2	1	3	1		1			1					8		4	1	26
12/23/2010		1				1	2		6	3	2	1		4	1	6	2			1	6	1	6	1	44
12/24/2010	1		2			1	1	1	1	2		2	1			3	1		2	1	8	2	7	4	40
12/25/2010			2			2			2		1	1	4	1		2	1	2			10	1	4	1	34
12/26/2010			1					2		2			1		1	3	1				16	2	5	1	35
12/27/2010		1	1			5			4	4	2	2	4		2	1	1		3		6	2	5		43
12/28/2010	2	1		1	3			4	1	2	4	1	1	1		1					3	3	3	1	32
12/29/2010	2		2			9		2	2		2		3			1	2		2		9	1	8	1	46
12/30/2010				3	1	2	2	3	4	1	1	1	2						1	2	1	2	5	1	32
12/31/2010		1	1	1	1		1		2	3		2	2			2					5	3	6	4	34
Totals	22	17	34	18	12	63	17	50	82	56	47	33	54	15	15	56	48	6	44	12	171	41	190	73	1,176

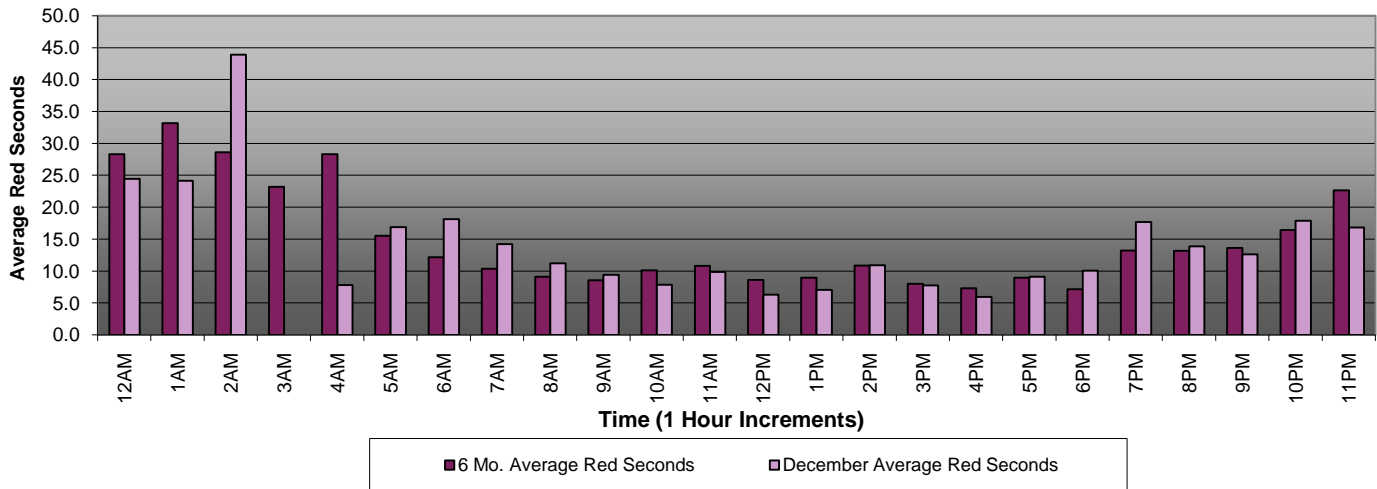
1301 = NB Tujunga Ave. @ Busway
 1302 = SB Tujunga Ave. @ Busway
 1313 = EB Oxnard St. @ Buffalo Ave.
 1314 = WB Oxnard St. @ Buffalo Ave.
 1321 = NB Woodman Ave. @ Busway
 1322 = SB Woodman Ave. @ Busway
 1331 = NB Kester Ave. @ Busway
 1332 = SB Kester Ave. @ Busway

1341 = NB Sepulveda Blvd. @ Busway
 1342 = SB Sepulveda Blvd. @ Busway
 1351 = NB Woodley @ Busway
 1352 = SB Woodley @ Busway
 1361 = NB Balboa Blvd. @ Busway
 1362 = SB Balboa Blvd. @ Busway
 1371 = NB White Oak Ave. @ Busway
 1372 = SB White Oak Ave. @ Busway

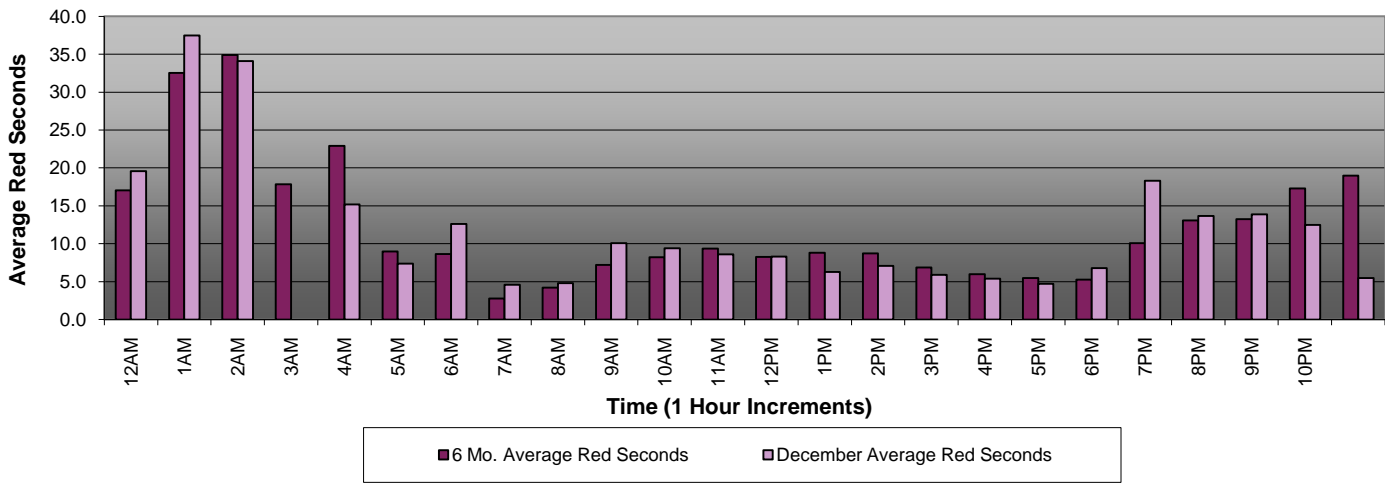
1382 = SB Lindley Ave. @ Busway
 1385 = WB to NB Lindley Ave. @ Oxnard St.
 1391 = NB Reseda Blvd. @ Busway
 1392 = SB Reseda Blvd. @ Busway
 1402 = SB Mason Ave. @ Busway
 1405 = WB to NB Mason Ave. @ Victory Blvd.
 1412 = SB De Soto Ave. @ Busway
 1415 = WB to NB De Soto Ave. @ Victory Blvd.



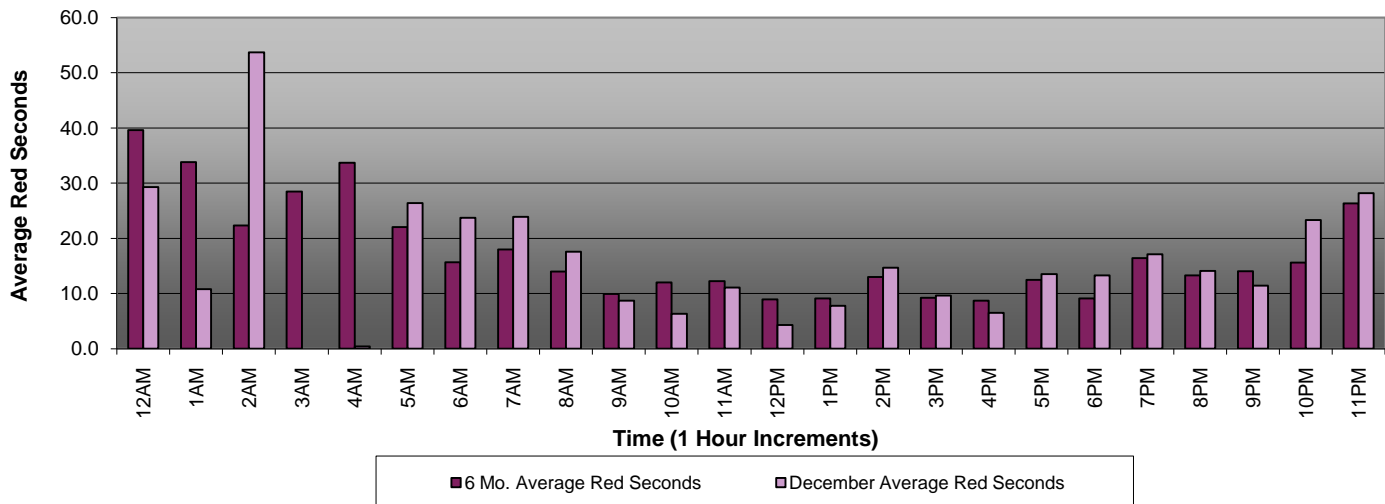
Average Red Seconds (Combined 6 Month Trend, July - December)



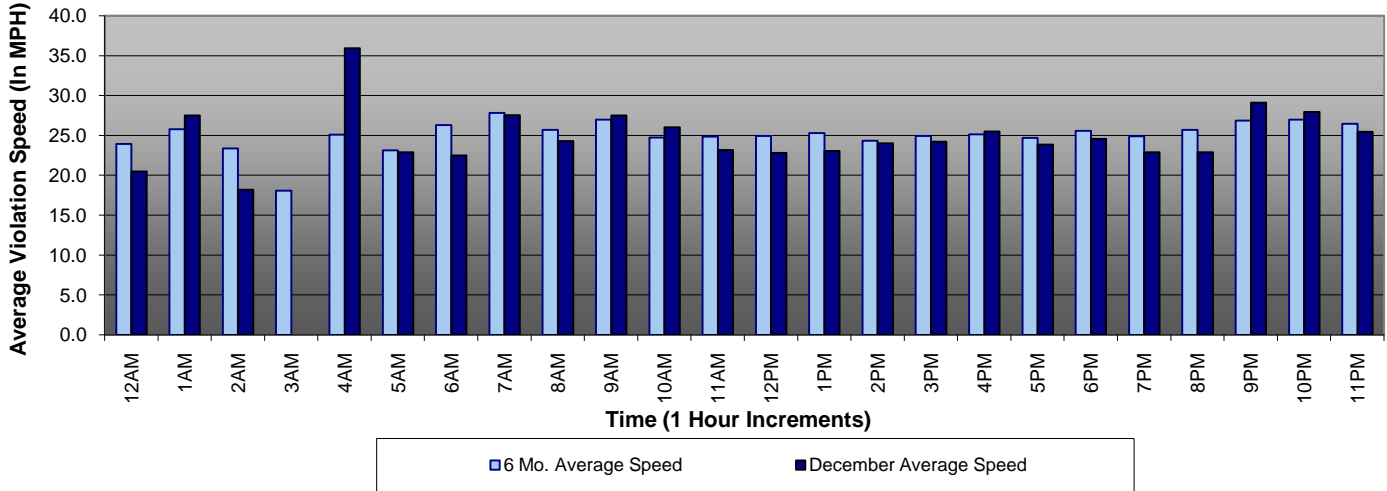
Average Red Seconds (Weekdays 6 Mo. Trend, July - December)



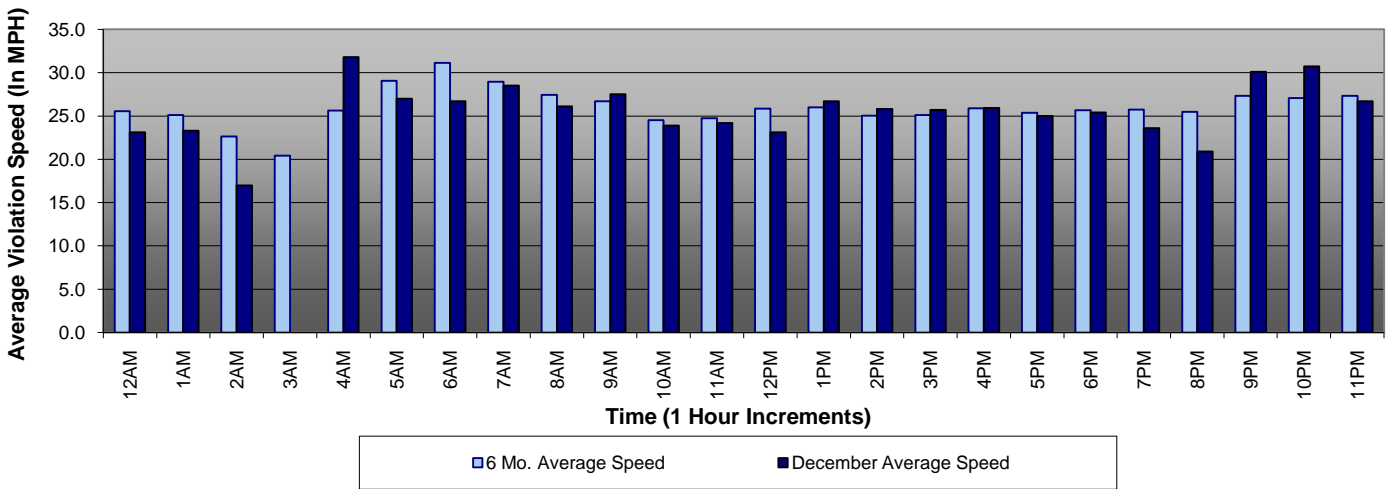
Average Red Seconds (Weekends, 6 Mo. Trend, July - December)



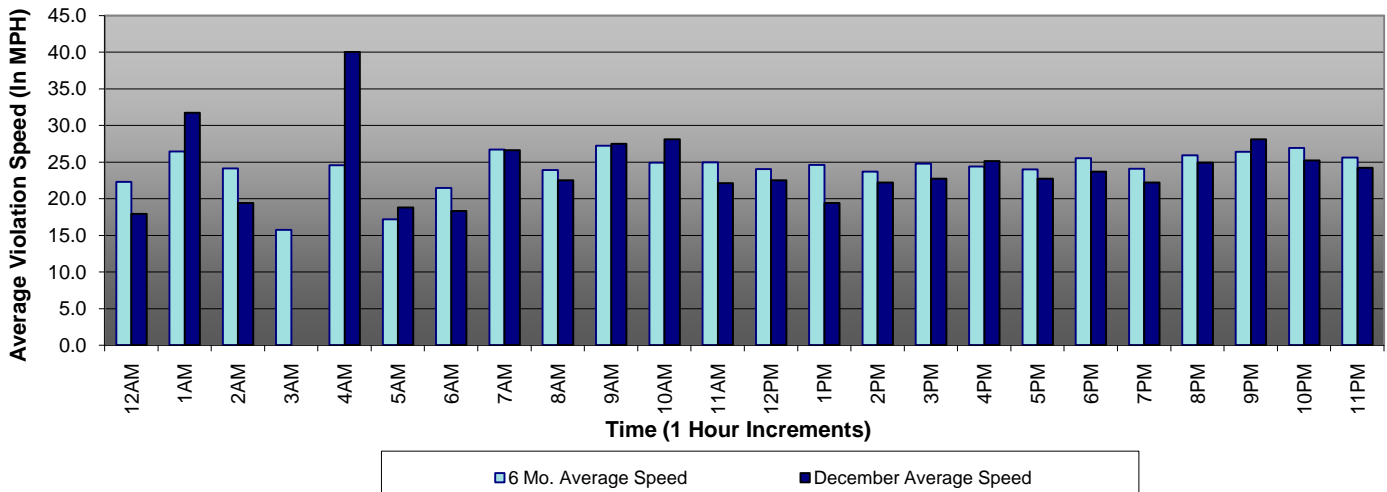
Average Violation Speed (Combined 6 Month Trend, July - December)



Average Violation Speed (Weekdays 6 Mo. Trend, July - December)



Average Violation Speed (Weekends, 6 Mo. Trend, July - December)





A **xerox** Company

Los Angeles County MTA Orange Line Monthly Citation Yield - By Location *December 2010*

Direction	Location	Code	Days of Enforcement	Events	Violations	Citations	Yield*
NB	Tujunga Ave @ Busway	1301	31	119	114	22	0.71
SB	Tujunga Ave @ Busway	1302	31	31	30	17	0.55
EB	Oxnard St. @ Buffalo Ave.	1313	31	70	40	34	1.10
WB	Oxnard St. @ Buffalo Ave.	1314	31	127	30	18	0.58
NB	Woodman Ave. @ Busway	1321	31	37	29	12	0.39
SB	Woodman Ave. @ Busway	1322	31	110	89	63	2.03
NB	Kester Ave. @ Busway	1331	31	41	28	17	0.55
SB	Kester Ave. @ Busway	1332	31	71	68	50	1.61
NB	Sepulveda Blvd. @ Busway	1341	31	147	145	82	2.65
SB	Sepulveda Blvd. @ Busway	1342	31	141	128	56	1.81
NB	Woodley @ Busway	1351	31	99	69	47	1.52
SB	Woodley @ Busway	1352	31	57	46	33	1.06
NB	Balboa Blvd. @ Busway	1361	31	125	84	54	1.74
SB	Balboa Blvd. @ Busway	1362	31	23	19	15	0.48
NB	White Oak Ave. @ Busway	1371	31	18	18	15	0.48
SB	White Oak Ave. @ Busway	1372	31	112	82	56	1.81
SB	Lindley Ave. @ Busway	1382	31	94	90	48	1.55
WB to NB	Lindley Ave. @ Oxnard St.	1385	31	2,779	18	6	0.19
NB	Reseda Blvd. @ Busway	1391	31	91	74	44	1.42
SB	Reseda Blvd. @ Busway	1392	31	26	20	12	0.39
SB	Mason Ave. @ Busway	1402	31	389	245	171	5.52
WB to NB	Mason Ave. @ Victory Blvd.	1405	31	1,585	62	41	1.32
SB	De Soto Ave. @ Busway	1412	31	293	265	190	6.13
WB to NB	De Soto Ave. @ Victory Blvd.	1415	31	731	126	73	2.35
Totals			31	7,316	1,919	1,176	37.94

*Yield is the number of citations issued per day of enforcement.



A **xerox** Company

**Los Angeles County MTA Orange Line
Disposition Summary Report
December 2010**

	Dec-10		3 Month Average		YTD Total		YTD Average		2009 Average	
Disposition Type	Count /Amount Paid		Count /Amount Paid		Count /Amount Paid		Count /Amount Paid		Count /Amount Paid	
<i>Bail Forfeiture</i>	329	\$161,210.00	335	\$163,816.00	3,719	\$1,778,957.00	310	\$148,246.42	445	\$185,417.08
<i>Fine Paid</i>	115	\$53,448.00	91	\$44,243.00	1,308	\$659,375.00	109	\$54,947.92	127	\$53,468.46
<i>Department Void</i>	10	\$0.00	5	\$0.00	178	\$0.00	15	\$0.00	16	\$0.00
<i>Not Guilty</i>	99	\$0.00	130	\$0.00	1,203	\$0.00	100	\$0.00	107	\$0.00
<i>Section D Void</i>	250	\$0.00	265	\$0.00	3,110	\$0.00	259	\$0.00	330	\$0.00
<i>Traffic School</i>	305	\$156,420.00	382	\$195,676.67	4,785	\$2,429,400.00	399	\$202,450.00	566	\$231,469.98
Court Gross Total	1108	\$371,078.00	1,207	\$403,735.67	14,303	\$4,867,732.00	1,192	\$405,644.33	1,590	\$470,355.51
MTA Gross Total*	749	\$108,784.89	808	\$116,924.39	9,812	\$1,428,838.62	818	\$119,069.89	1,138	\$174,267.44

*Logic built on following model (assuming the new 2009 fine and fee structure):

MTA receives \$146.31 of \$446.00 citation where bail forfeiture and fine paid occurs

MTA receives \$148.05 of \$509.00 citation when traffic school option is paid for



Los Angeles County MTA Orange Line
Performance Report
December 2010

	<u>Total</u>	<u>Non</u>	<u>Potential</u>	<u>Percent</u>	<u>Non Issued</u>	<u>No DMV</u>	<u>Police/</u>	<u>DMV</u>	<u>Issuance</u>	<u>Dispo</u>	<u>Pay</u>	<u>Closed</u>	<u>Closure</u>	<u>Contest</u>		
	<u>Events</u>	<u>Violations</u>	<u>Violations</u>	<u>Citable</u>	<u>Violations</u>	<u>Match</u>	<u>Client</u>	<u>Citations</u>	<u>Match</u>	<u>Rate</u>	<u>Rate</u>	<u>No Pay</u>	<u>Pending</u>	<u>Rate</u>	<u>Rate</u>	
							<u>Rejected</u>	<u>Issued</u>	<u>Rate</u>	<u>Rate</u>						
Aug-06	3854	864	2990	77.58%	2735	45	20	255	85.94%	8.53%	205	80%	20	30	88%	-
Sep-06	4212	934	3278	77.83%	1562	199	23	1716	89.73%	52.35%	1,385	81%	140	191	89%	-
Oct-06	3855	788	3067	79.56%	1069	225	27	1998	90.00%	65.15%	1,596	80%	184	218	89%	-
Nov-06	12589	8872	3717	29.53%	2186	169	27	1531	90.21%	41.19%	1,209	79%	124	198	87%	-
Dec-06	13009	9452	3557	27.34%	1792	190	16	1765	90.36%	49.62%	1,411	80%	140	214	88%	48.3%
Jan-07	9820	6557	3263	33.23%	1376	185	29	1887	91.19%	57.83%	1,474	78%	141	272	86%	11.4%
Feb-07	6746	3641	3105	46.03%	1180	255	15	1925	88.38%	62.00%	1,496	78%	163	266	86%	9.6%
Mar-07	5452	2081	3371	61.83%	1261	318	17	2110	86.99%	62.59%	1,706	81%	157	247	88%	8.7%
Apr-07	5235	2116	3119	59.58%	1080	283	35	2039	87.99%	65.37%	1,632	80%	133	274	87%	15.9%
May-07	4735	1643	3092	65.30%	1005	268	37	2087	88.80%	67.50%	1611	77%	140	336	84%	11.9%
Jun-07	5004	1725	3279	65.53%	1147	288	36	2132	88.27%	65.02%	1647	77%	141	344	84%	15.4%
Jul-07	5396	1906	3490	64.68%	1919	273	43	1571	85.53%	45.01%	1164	74%	112	295	81%	17.1%
Aug-07	5664	2259	3405	60.12%	1507	321	131	1898	86.34%	55.74%	1373	72%	140	385	80%	21.9%
Sep-07	4021	1247	2774	68.99%	1111	245	99	1663	87.79%	59.95%	1137	68%	124	402	76%	14.8%
Oct-07	4952	1811	3141	63.43%	1469	215	193	1672	89.66%	53.23%	1123	67%	146	403	76%	20.3%
Nov-07	4676	1810	2866	61.29%	1201	180	151	1665	90.98%	58.09%	1113	67%	154	398	76%	23.4%
Dec-07	4466	1783	2683	60.08%	1269	207	191	1414	88.58%	52.70%	985	70%	140	289	80%	20.7%
Jan-08	4150	1651	2499	60.22%	1142	188	166	1357	89.01%	54.30%	1105	81%	97	155	89%	21.4%
Feb-08	3875	1446	2429	62.68%	1245	157	206	1184	89.85%	48.74%	938	79%	106	140	88%	19.4%
Mar-08	4696	1887	2809	59.82%	1570	169	148	1239	89.14%	44.11%	986	80%	83	170	86%	21.5%
Apr-08	4417	1835	2582	58.46%	1297	134	72	1285	91.01%	49.77%	1009	79%	97	179	86%	23.5%
May-08	4764	1847	2917	61.23%	1642	178	157	1275	88.94%	43.71%	1008	79%	93	174	86%	18.0%
Jun-08	4401	1484	2917	66.28%	1481	182	120	1436	89.53%	49.23%	1137	79%	105	194	86%	29.5%
Jul-08	4097	1558	2539	61.97%	1230	170	94	1309	89.19%	51.56%	963	74%	165	181	86%	24.3%
Aug-08	4211	1623	2588	61.46%	1222	167	161	1366	90.14%	52.78%	1013	74%	127	226	83%	18.4%
Sep-08	4446	1868	2578	57.98%	1153	173	100	1425	89.81%	55.28%	1117	78%	127	181	87%	31.5%
Oct-08	4412	1715	2697	61.13%	1179	139	115	1518	92.16%	56.28%	1133	75%	133	252	83%	18.5%
Nov-08	3795	1485	2310	60.87%	948	145	125	1362	91.12%	58.96%	1026	75%	140	196	86%	16.0%
Dec-08	3759	1479	2280	60.65%	924	144	97	1356	90.98%	59.47%	1042	77%	119	195	86%	18.3%
Jan-09	3703	1404	2299	62.08%	882	157	87	1417	90.55%	61.64%	1083	76%	146	188	87%	19.6%
Feb-09	3397	1348	2049	60.31%	853	125	64	1196	90.97%	58.37%	903	76%	149	144	88%	27.3%
Mar-09	3731	1446	2285	61.24%	978	145	86	1307	90.57%	57.20%	999	76%	127	181	86%	15.0%
Apr-09	3693	1548	2145	58.08%	926	133	74	1219	90.67%	56.83%	947	78%	95	177	85%	19.5%
May-09	3644	1458	2186	59.99%	936	139	102	1250	90.68%	57.18%	941	75%	127	182	85%	20.2%
Jun-09	3298	1316	1982	60.10%	887	118	112	1095	91.09%	55.25%	794	73%	135	166	85%	23.7%
Jul-09	3417	1401	2016	59.00%	829	147	42	1187	89.32%	58.88%	899	76%	111	177	85%	22.5%
Aug-09	3225	1295	1930	59.84%	804	142	62	1126	89.32%	58.34%	815	72%	141	170	85%	17.7%
Sep-09	3092	1304	1788	57.83%	700	119	91	1088	90.83%	60.85%	753	69%	156	179	84%	16.2%
Oct-09	3455	1386	2069	59.88%	875	125	82	1194	91.08%	57.71%	854	72%	155	185	85%	27.2%
Nov-09	3254	1333	1921	59.04%	815	118	71	1106	90.89%	57.57%	757	68%	152	197	82%	3.8%
Dec-09	3360	1423	1937	57.65%	851	135	90	1086	89.70%	56.07%	765	70%	121	200	82%	4.3%
Jan-10	2771	1034	1737	62.68%	694	128	85	1043	89.81%	60.05%	722	69%	118	203	81%	19.7%
Feb-10	2817	1150	1667	59.18%	782	121	87	885	88.93%	53.09%	546	62%	128	211	76%	17.3%
Mar-10	3133	1198	1935	61.76%	767	101	73	1168	92.47%	60.36%	722	62%	177	269	77%	26.7%
Apr-10	3145	1278	1867	59.36%	828	130	59	1039	89.41%	55.65%	639	62%	130	270	74%	19.3%
May-10	3557	1390	2167	60.92%	1040	154	125	1127	89.05%	52.01%	646	57%	179	302	73%	19.0%
Jun-10	6773	4598	2175	32.11%	1056	124	19	1119	90.17%	51.45%	628	56%	123	368	67%	23.0%
Jul-10	10157	7542	2615	25.75%	1353	126	10	1262	90.99%	48.26%	676	54%	146	440	65%	24.7%
Aug-10	9206	6923	2283	24.80%	1115	116	38	1168	91.23%	51.16%	527	45%	72	569	51%	25.6%
Sep-10	8403	6311	2092	24.90%	978	115	29	1114	90.86%	53.25%	419	38%	43	652	41%	26.1%
Oct-10	7902	5988	1914	24.22%	834	122	21	1080	90.02%	56.43%	320	30%	33	727	33%	20.9%
Nov-10	7298	5430	1868	25.60%	703	120	12	1165	90.75%	62.37%	233	20%	10	922	21%	19.3%
Dec-10	7316	5397	1919	26.23%	743	102	60	1176	92.38%	61.28%	140	12%	40	996	15%	24.7%
Total	268,456	134,268	134,188	49.99%	61,131	8,874	4,232	73,057	89.70%	54.44%	51,472	73.80%	6,505	15,080	82.45%	20.06%

* Pay Rate and Closure Rate percentages are based on a 3 month (90 day) lag
 ** Contested Citations Data Available from January 2006 to present
 *** Contested Citations take into account a 3 month (90 day) lag from the violation date to the trail date.