

PROGRAM REFERENCE CARD

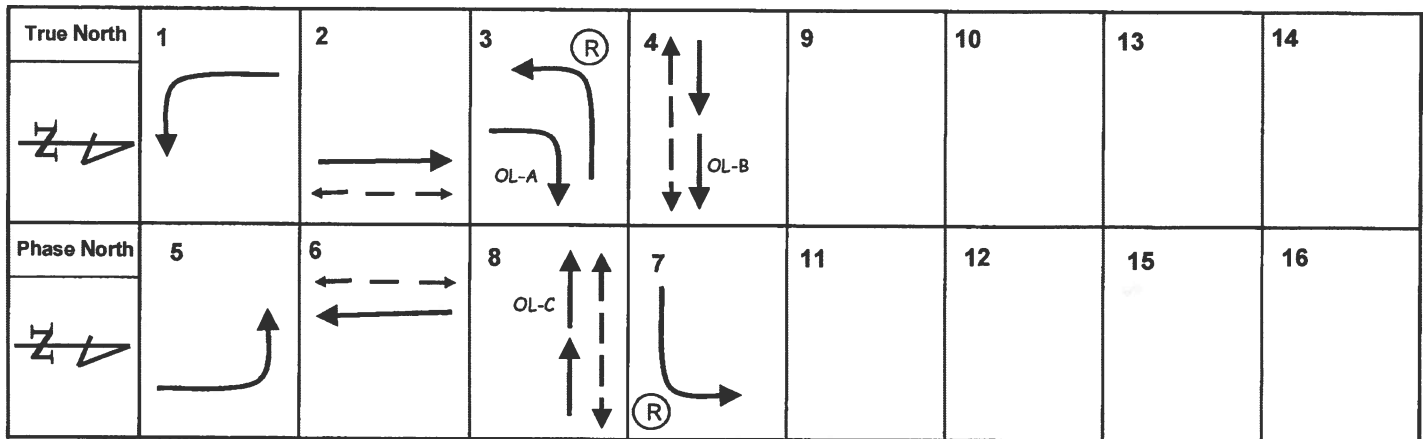
INTERSECTION: HAWTHORNE BL @ IMPERIAL HWY Date Prepared: 10-9-14 SDD By: MC
T.S. No.: 1456 Date Implemented: _____ By: _____

UTILITIES SUBMENU

8-7. SOFTWARE MODULES

NAME	PART NUMBER	VERSION
EB U-BOOT	119-1046-201	05.01.07
O/S	119-1047-202	06.02.12
APPLICATION	119-1051-260	32.60.00
CONFIGURATION	100-1049-001	L3000,15
EB CONTROLLER	119-1049-203	07.03.00
BGC CONTROLLER	140-1020-202	09.02.03
BGC RESOURCE	140-1033-202	18.02.00
PIO CONTROLLER	140-1021-202	10.02.07
PS CONTROLLER	140-1022-202	11.02.00
AGC U-BOOT		
AGC OS		
AGC APPLICATION		
TELEMETRY	N/A	N/A

PHASE DIAGRAM



Comments:

OVERLAP A = $\Phi 3$
OVERLAP B = $\Phi 4$
OVERLAP C = $\Phi 8$

(R) = RESTRICTED PHASE

PROGRAM REFERENCE CARD

INTERSECTION: HAWTHORNE BL @ IMPERIAL HWY Date Prepared: 10-4-14 SDD By: MC

T.S. No.: 1456 Date Implemented: _____ By: _____

CONFIGURATION SUBMENU

1-1-1. PHASE RING SEQUENCE AND ASSIGNMENT

CONTROLLER SEQUENCE										1							
SEQUENCE COMMANDS												HARDWARE ALTERNATE SEQUENCE ENABLE					
	1	2	3	4	5	6	7	8	9	10	11	12	13	14	15	16	
BARRIER CONTROL	C	C	C	C	C	C	C	C	C	C	C	C	C	C	C	C	
RING 1	1	2	3	4													
RING 2	5	6	8	7													
RING 3																	
RING 4																	

CONTROLLER SEQUENCE										2							
SEQUENCE COMMANDS												HARDWARE ALTERNATE SEQUENCE ENABLE					
	1	2	3	4	5	6	7	8	9	10	11	12	13	14	15	16	
BARRIER CONTROL																	
RING 1																	
RING 2																	
RING 3																	
RING 4																	

CONTROLLER SEQUENCE										3							
SEQUENCE COMMANDS												HARDWARE ALTERNATE SEQUENCE ENABLE					
	1	2	3	4	5	6	7	8	9	10	11	12	13	14	15	16	
BARRIER CONTROL																	
RING 1																	
RING 2																	
RING 3																	
RING 4																	

CONTROLLER SEQUENCE										4							
SEQUENCE COMMANDS												HARDWARE ALTERNATE SEQUENCE ENABLE					
	1	2	3	4	5	6	7	8	9	10	11	12	13	14	15	16	
BARRIER CONTROL																	
RING 1																	
RING 2																	
RING 3																	
RING 4																	

UP TO 16 CONTROL SEQUENCES AVAILABLE.

PROGRAM REFERENCE CARD

INTERSECTION: HAWTHORNE BL @ IMPERIAL HWY Date Prepared: 10-9-14 SD By: MC
T.S. No.: 1456 Date Implemented: _____ By: _____

CONFIGURATION SUBMENU

1-5-1. ETHERNET PORT CONFIGURATION

MAC ADDRESS	
CONTROLLER IP ADDRESS	
SUBNET MASK	
DEFAULT GATEWAY IP ADDRESS	
SERVER IP ADDRESS	
LINK SPEED/DUPLEX	
DROP OUT TIME	
ENET-2 IP (READ ONLY)	

1-5-2. PORT 2/C50S

ENABLE		PROTOCOL*	
BIT RATE (BPS)		ADDRESS	
DATA, PARITY, STOP		GROUP ADDRESS	
DUPLEX - HALF OR FULL		DROP OUT TIME (in sec)	
FLOW CONTROL		SINGLE FLAGGED	

1-5-3. PORT 3A/C21S

ENABLE		PROTOCOL**	
DATA BIT RATE (BPS)		ADDRESS	
DATA, PARITY, STOP		GROUP ADDRESS	
DUPLEX - HALF OR FULL		SINGLE FLAGGED	
FLOW CONTROL		TRD (ms)	
		DROP-OUT TIME (in sec)	

*PORT 2/C50S PROTOCOL TYPES:

- TERM
- NTCIP
- ECPIP
- AB3418
- METRO RAPID
- IEEE 1570
- GPS NMEA

**PORT 3A/C21S & PORT3B/C22S

PROTOCOL TYPES

- TERM
- NTCIP
- ECPIP
- AB3418

1-5-4. PORT 3B/C22S

ENABLE		PROTOCOL**	
DATA BIT RATE (BPS)		ADDRESS	
DATA, PARITY, STOP		GROUP ADDRESS	
DUPLEX - HALF OR FULL		SINGLE FLAGGED	
FLOW CONTROL		TELEMETRY RESPONSE DELAY (ms)	
RTS TO CTS DELAY (in ms)		DROP-OUT TIME	
RTS TURN OFF DELAY (in ms)			
EARLY RTS			
FSK HARDWARE			

1-5-5. NTCIP

BACKUP TIME (in seconds)	
ETHERNET UDP PORT	
ETHERNET PRIORITY	
PORT C50S PRIORITY	
PORT C21S PRIORITY	
PORT C22S PROIRITY	

1-5-6. ECPIP

CONTROLLER ADDRESS									
EXPANDED SYSTEM DETECTOR ADDRESS									
SYSTEM DETECTOR ASSIGNMENT:									
SYSTEM DETECTOR	1	2	3	4	5	6	7	8	
LOCAL DETECTOR									
SYSTEM DETECTOR	9	10	11	12	13	14	15	16	
LOCAL DETECTOR									

1-5-7. WIRELESS CONFIGURATION

WIRELESS CHANNEL NUMBER	
WIRELESS ACCESS CODE	

1-5-8. PEER TO PEER SET UP

LOCAL PORT			
LOCAL PEER	PORT	IP ADDRESS	TIMEOUT
1			
2			
3			
4			
5			
6			
7			
8			
9			
10			
11			
12			
13			
14			
15			

PROGRAM REFERENCE CARD

INTERSECTION: HAWTHORNE BL @ IMPERIAL HWY Date Prepared: 10-9-14 SDD By: MC
T.S. No.: 1456 Date Implemented: _____ By: _____

CONTROLLER SUBMENU

2-1. CONTROLLER TIMING DATA

TIMING PLAN	1	PHASE DATA															
PHASE	1	2	3	4	5	6	7	8	9	10	11	12	13	14	15	16	
MINIMUM GREEN	12	9	13	10	11	9	13	10									
BICYCLE MIN GREEN	0	0	0	0	0	0	0	0									
CONDITIONAL SERVICE MIN GRN	0	0	0	0	0	0	0	0									
DELAY GREEN	0	0	0	0	0	0	0	0									
WALK	0	7	0	7	0	7	0	7									
WALK 2	0	0	0	0	0	0	0	0									
WALK MAX	0	0	0	0	0	0	0	0									
PEDESTRIAN CLEARANCE	0	26*	0	47*	0	26*	0	41									
PEDESTRIAN CLEARANCE 2	0	0	0	0	0	0	0	0									
PEDESTRIAN CLEARANCE MAX	0	0	0	0	0	0	0	0									
PEDESTRIAN CARRY OVER	0	0	0	0	0	0	0	0									
VEHICLE EXTENSION	1.5	2.0	1.5	2.0	1.5	2.0	1.5	2.0									
VEHICLE EXTENSION 2	0	0	0	0	0	0	0	0									
MAX 1	25	60	25	60	25	60	25	60									
MAX 2	0	0	0	0	0	0	0	0									
MAX 3	0	0	0	0	0	0	0	0									
DYNAMIC MAX	0	0	0	0	0	0	0	0									
DYNAMIC STEP	0	0	0	0	0	0	0	0									
YELLOW	3.5	4.5	3.5	4.5	3.5	4.5	3.5	4.5									
RED CLEARANCE	1.0	1.0	1.0	1.0	2.0	1.0	1.0	1.0									
RED MAX	0.0	0.0	0.0	0.0	0.0	0.0	0.0	0.0									
RED REVERT	2.0	2.0	2.0	2.0	2.0	2.0	2.0	2.0									
ACTUATIONS BEFORE (ACT B4)	0	0	0	0	0	0	0	0									
SEC/ACTUATION	0	2.2	0	2.2	0	2.2	0	2.2									
MAX ADDED INITIAL (MAX INI)	0	20	0	20	0	20	0	20									
TIME BEFORE GAP REDUCTION	0	15	0	15	0	15	0	15									
CARS WAITING B4 REDUCTION	0	255	0	255	0	255	0	255									
STEP TO REDUCE (STPTDUC)	0	0	0	0	0	0	0	0.0									
TIME TO REDUCE (TTREDUC)	0	15	0	15	0	15	0	15									
MINIMUM GAP	1.5	1.0	1.5	1.0	1.5	1.0	1.5	1.0									

Comments: * Requested by the City of Hawthorne

PROGRAM REFERENCE CARD

INTERSECTION: HAWTHORNE BL @ IMPERIAL HWY Date Prepared: 10-9-14 SDD By: ML
T.S. No.: 1456 Date Implemented: _____ By: _____

CONTROLLER SUBMENU

2-2. VEHICLE OVERLAP

VEHICLE OVERLAP	A				TYPE								NORMAL			
PHASES	1	2	3	4	5	6	7	8	9	10	11	12	13	14	15	16
INCLUDED			X													
PROTECT																
MODIFIER																
PED PROTECT																
NOT OVLP																
FLASH GRN																
LAG X PHASE																
LAG 2 PHASE																
LAG GREEN																
LAG YELLOW																
LAG RED																
ADV GREEN																
PROTECTED PHASE (LEFT TURN)																
PERMISSIVE PHASE (OPPOSING THROUGH)																
FLASHING ARROW OUTPUT												CH				
DELAY START OF FYA:								CLEARANCE:								
ACTION PLAN SF BIT DISABLE																

VEHICLE OVERLAP	B				TYPE								NORMAL			
PHASES	1	2	3	4	5	6	7	8	9	10	11	12	13	14	15	16
INCLUDED				X												
PROTECT																
MODIFIER																
PED PROTECT																
NOT OVLP																
FLASH GRN																
LAG X PHASE																
LAG 2 PHASE																
LAG GREEN	3.0															
LAG YELLOW					4.5											
LAG RED									1.0							
ADV GREEN																
PROTECTED PHASE (LEFT TURN)																
PERMISSIVE PHASE (OPPOSING THROUGH)																
FLASHING ARROW OUTPUT												CH				
DELAY START OF FYA:								CLEARANCE:								
ACTION PLAN SF BIT DISABLE																

VEHICLE OVERLAP	C				TYPE								NORMAL			
PHASES	1	2	3	4	5	6	7	8	9	10	11	12	13	14	15	16
INCLUDED								X								
PROTECT																
MODIFIER																
PED PROTECT																
NOT OVLP																
FLASH GRN																
LAG X PHASE																
LAG 2 PHASE																
LAG GREEN	3.0															
LAG YELLOW																
LAG RED																
ADV GREEN																
PROTECTED PHASE (LEFT TURN)																
PERMISSIVE PHASE (OPPOSING THROUGH)																
FLASHING ARROW OUTPUT												CH				
DELAY START OF FYA:								CLEARANCE:								
ACTION PLAN SF BIT DISABLE																

VEHICLE OVERLAP	TYPE															
PHASES	1	2	3	4	5	6	7	8	9	10	11	12	13	14	15	16
INCLUDED																
PROTECT																
MODIFIER																
PED PROTECT																
NOT OVLP																
FLASH GRN																
LAG X PHASE																
LAG 2 PHASE																
LAG GREEN																
LAG YELLOW																
LAG RED																
ADV GREEN																
PROTECTED PHASE (LEFT TURN)																
PERMISSIVE PHASE (OPPOSING THROUGH)																
FLASHING ARROW OUTPUT												CH				
DELAY START OF FYA:								CLEARANCE:								
ACTION PLAN SF BIT DISABLE																

VEHICLE OVERLAP	TYPE															
PHASES	1	2	3	4	5	6	7	8	9	10	11	12	13	14	15	16
INCLUDED																
PROTECT																
MODIFIER																
PED PROTECT																
NOT OVLP																
FLASH GRN																
LAG X PHASE																
LAG 2 PHASE																
LAG GREEN																
LAG YELLOW																
LAG RED																
ADV GREEN																
PROTECTED PHASE (LEFT TURN)																
PERMISSIVE PHASE (OPPOSING THROUGH)																
FLASHING ARROW OUTPUT												CH				
DELAY START OF FYA:								CLEARANCE:								
ACTION PLAN SF BIT DISABLE																

VEHICLE OVERLAP	TYPE															
PHASES	1	2	3	4	5	6	7	8	9	10	11	12	13	14	15	16
INCLUDED																
PROTECT																
MODIFIER																
PED PROTECT																
NOT OVLP																
FLASH GRN																
LAG X PHASE																
LAG 2 PHASE																
LAG GREEN																
LAG YELLOW																
LAG RED																
ADV GREEN																
PROTECTED PHASE (LEFT TURN)																
PERMISSIVE PHASE (OPPOSING THROUGH)																
FLASHING ARROW OUTPUT												CH				
DELAY START OF FYA:								CLEARANCE:								
ACTION PLAN SF BIT DISABLE																

PROGRAM REFERENCE CARD

INTERSECTION: HAWTHORNE BL @ IMPERIAL HWY Date Prepared: 10-4-14 SDD By: MC

T.S. No.: 1456 Date Implemented: _____ By: _____

CONTROLLER SUBMENU

2-2. VEHICLE OVERLAP

VEHICLE OVERLAP		TYPE															
PHASES		1	2	3	4	5	6	7	8	9	10	11	12	13	14	15	16
INCLUDED																	
PROTECT																	
MODIFIER																	
PED PROTECT																	
NOT OVLP																	
FLASH GRN																	
LAG X PHASE																	
LAG 2 PHASE																	
LAG GREEN		LAG YELLOW					LAG RED					ADV GREEN					
PROTECTED PHASE (LEFT TURN)																	
PERMISSIVE PHASE (OPPOSING THROUGH)																	
FLASHING ARROW OUTPUT											CH						
DELAY START OF FYA:									CLEARANCE:								
ACTION PLAN SF BIT DISABLE																	

VEHICLE OVERLAP		TYPE															
PHASES		1	2	3	4	5	6	7	8	9	10	11	12	13	14	15	16
INCLUDED																	
PROTECT																	
MODIFIER																	
PED PROTECT																	
NOT OVLP																	
FLASH GRN																	
LAG X PHASE																	
LAG 2 PHASE																	
LAG GREEN		LAG YELLOW					LAG RED					ADV GREEN					
PROTECTED PHASE (LEFT TURN)																	
PERMISSIVE PHASE (OPPOSING THROUGH)																	
FLASHING ARROW OUTPUT											CH						
DELAY START OF FYA:									CLEARANCE:								
ACTION PLAN SF BIT DISABLE																	

VEHICLE OVERLAP		TYPE															
PHASES		1	2	3	4	5	6	7	8	9	10	11	12	13	14	15	16
INCLUDED																	
PROTECT																	
MODIFIER																	
PED PROTECT																	
NOT OVLP																	
FLASH GRN																	
LAG X PHASE																	
LAG 2 PHASE																	
LAG GREEN		LAG YELLOW					LAG RED					ADV GREEN					
PROTECTED PHASE (LEFT TURN)																	
PERMISSIVE PHASE (OPPOSING THROUGH)																	
FLASHING ARROW OUTPUT											CH						
DELAY START OF FYA:									CLEARANCE:								
ACTION PLAN SF BIT DISABLE																	

VEHICLE OVERLAP		TYPE															
PHASES		1	2	3	4	5	6	7	8	9	10	11	12	13	14	15	16
INCLUDED																	
PROTECT																	
MODIFIER																	
PED PROTECT																	
NOT OVLP																	
FLASH GRN																	
LAG X PHASE																	
LAG 2 PHASE																	
LAG GREEN		LAG YELLOW					LAG RED					ADV GREEN					
PROTECTED PHASE (LEFT TURN)																	
PERMISSIVE PHASE (OPPOSING THROUGH)																	
FLASHING ARROW OUTPUT											CH						
DELAY START OF FYA:									CLEARANCE:								
ACTION PLAN SF BIT DISABLE																	

PROGRAM REFERENCE CARD

INTERSECTION: HAWTHORNE BL @ IMPERIAL HWY Date Prepared: 10-9-14 SDD By: MC
T.S. No.: 1456 Date Implemented: _____ By: _____

CONTROLLER SUBMENU

2-5. START / FLASH DATA

POWER START																	
	1	2	3	4	5	6	7	8	9	10	11	12	13	14	15	16	
PHASE		Y				Y											
	A	B	C	D	E	F	G	H	I	J	K	L	M	N	O	P	
OVERLAP																	
FLASH>MON	NO				FLASH TIME				0				ALL RED				6
POWER START SEQ	1				MUTCD								NO				
AUTOMATIC FLASH																	
	1	2	3	4	5	6	7	8	9	10	11	12	13	14	15	16	
ENTRY																	
EXIT																	
OVERLAP	A	B	C	D	E	F	G	H	I	J	K	L	M	N	O	P	
EXIT																	
FLASH>MON	NO				EXIT FLASH				R				MIN AUTO FLASH				10
MINIMUM RECALL	NO				CYCLE THRU PHASE				NO								

2-6-1. CONTROLLER OPTIONS

PEDESTRIAN CLEARANCE PROTECT	X								UNIT RED REVERT	2.0							
MUTCD 3 SECOND DON'T WALK	NO																
PHASE	1	2	3	4	5	6	7	8	9	10	11	12	13	14	15	16	
FLASHING GREEN PHASE																	
GUARANTEED PASSAGE																	
NON-ACT I																	
NON-ACT II																	
DUAL ENTRY				X				X									
COND SERVICE																	
COND RESERVICE																	
PED RESERVICE																	
REST IN WALK																	
FLASHING WALK																	
PED CLEAR > YELLOW																	
PED CLEAR > ALL RED																	
INIT GREEN + VEH EXT																	

2-6-2. EXTENDED OPTIONS [Not Available]

PROGRAM REFERENCE CARD

INTERSECTION: HAWTHORNE BL @ IMPERIAL HWY Date Prepared: 10-4-14 SDD By: MC

T.S. No.: 1456 Date Implemented: _____ By: _____

COORDINATION SUBMENU

COORDINATION OPERATION SUMMARY			
COORDINATION PATTERN	SPLIT PATTERN	HOURS OF OPERATION	DAYS OF OPERATION
FREE OPERATION			

3-1. COORDINATOR OPTIONS

MANUAL PATTERN		ECPI COORD	
INTERCONNECT SYS. SOURCE		INTERCONNECT SYS. FORMAT	
SPLITS IN		OFFSET IN	
TRANSITION		MAX SELECT	
DWELL / ADD TIME		ENABLE MANUAL SYNC	
DELAY COORD WALK TO LOCAL ZERO		FORCE OFF (FO)	
OFFSET REFERENCE		CAL USE PED TIME	
PED RECALL		PED RE-SERVICE	
LOCAL ZERO OVERRIDE		FO ADDED INITIAL GREEN	
RE-SYNC COUNT		MULTISYNC	

3-2. COORDINATOR PATTERN (See Pages 16-18).

3-3. SPLIT PATTERN (See Pages 19).

3-4. AUTO PERMISSIVE MINIMUM GREEN (SECONDS)

PHASE	1	2	3	4	5	6	7	8
MINIMUM GREEN								
PHASE	9	10	11	12	13	14	15	16
MINIMUM GREEN								

3-5. SPLIT DEMAND

PHASE	1	2	3	4	5	6	7	8	9	10	11	12	13	14	15	16
DEMAND 1																
DEMAND 2																
DEMAND	1	2														
DETECTOR																
CALL TIME (SECONDS)																
CYCLE COUNT																

PROGRAM REFERENCE CARD

INTERSECTION: HAWTHORNE BL @ IMPERIAL HWY Date Prepared: 10-9-14 JDD By: MC
T.S. No.: 1456 Date Implemented: _____ By: _____

COORDINATION SUBMENU

3-2. COORDINATOR PATTERN

COORDINATOR PATTERN	1																		
USE SPLIT PATTERN	1		SPLIT SUM																
TS2 (PAT - OFF)																			
CYCLE			STD (COS)																
OFFSET VALUE			DWELL/ADD TIME																
ACTUATED COORD			TIMING PLAN																
ACT WALK REST			SEQUENCE																
PHASE RESERVICE			ACTION PLAN																
MAX SELECT			FORCE OFF																
SPLIT PREFERENCE PHASES																			
PHASE(S)		1	2	3	4	5	6	7	8										
SPLIT																			
PREFERENCE 1																			
PREFERENCE 2																			
SPLIT EXT (SEC)																			
VEH PERM			DISP																
RING DISP			(RING 2-4)																
PHASE(S)		9	10	11	12	13	14	15	16										
SPLIT																			
PREFERENCE 1																			
PREFERENCE 2																			
SPLIT DEMAND PATTERN																			
PHASE(S)		1	2	3	4	5	6	7	8	9	10	11	12	13	14	15	16	X-ARTERIAL PATTERN	
COORD																			
VEH RECALL																			
PED RECALL																			
MAX RECALL																			
OMIT																			
SPECIAL FUNCTION OUTPUTS																			

COORDINATOR PATTERN	2																		
USE SPLIT PATTERN	2		SPLIT SUM																
TS2 (PAT - OFF)																			
CYCLE			STD (COS)																
OFFSET VALUE			DWELL/ADD TIME																
ACTUATED COORD			TIMING PLAN																
ACT WALK REST			SEQUENCE																
PHASE RESERVICE			ACTION PLAN																
MAX SELECT			FORCE OFF																
SPLIT PREFERENCE PHASES																			
PHASE(S)		1	2	3	4	5	6	7	8										
SPLIT																			
PREFERENCE 1																			
PREFERENCE 2																			
SPLIT EXT (SEC)																			
VEH PERM			DISP																
RING DISP			(RING 2-4)																
PHASE(S)		9	10	11	12	13	14	15	16										
SPLIT																			
PREFERENCE 1																			
PREFERENCE 2																			
SPLIT DEMAND PATTERN																			
PHASE(S)		1	2	3	4	5	6	7	8	9	10	11	12	13	14	15	16	X-ARTERIAL PATTERN	
COORD																			
VEH RECALL																			
PED RECALL																			
MAX RECALL																			
OMIT																			
SPECIAL FUNCTION OUTPUTS																			

PROGRAM REFERENCE CARD

INTERSECTION: HAWTHORNE BL @ IMPERIAL HWY Date Prepared: 10-9-14 SDD By: MC

T.S. No.: 1456 Date Implemented: _____ By: _____

COORDINATION SUBMENU

3-2. COORDINATOR PATTERN (CONTINUED)

COORDINATOR PATTERN	3																
USE SPLIT PATTERN	3		SPLIT SUM														
TS2 (PAT - OFF)																	
CYCLE			STD (COS)														
OFFSET VALUE			DWELL/ADD TIME														
ACTUATED COORD			TIMING PLAN														
ACT WALK REST			SEQUENCE														
PHASE RESERVICE			ACTION PLAN														
MAX SELECT			FORCE OFF														
SPLIT PREFERENCE PHASES																	
PHASE(S)		1	2	3	4	5	6	7	8								
SPLIT																	
PREFERENCE 1																	
PREFERENCE 2																	
SPLIT EXT (SEC)																	
VEH PERM			DISP														
RING DISP			(RING 2-4)														
PHASE(S)		9	10	11	12	13	14	15	16								
SPLIT																	
PREFERENCE 1																	
PREFERENCE 2																	
SPLIT DEMAND PATTERN																	
PHASE(S)		1	2	3	4	5	6	7	8	9	10	11	12	13	14	15	16
COORD																	
VEH RECALL																	
PED RECALL																	
MAX RECALL																	
OMIT																	
SPECIAL FUNCTION OUTPUTS																	

COORDINATOR PATTERN	4																
USE SPLIT PATTERN	4		SPLIT SUM														
TS2 (PAT - OFF)																	
CYCLE			STD (COS)														
OFFSET VALUE			DWELL/ADD TIME														
ACTUATED COORD			TIMING PLAN														
ACT WALK REST			SEQUENCE														
PHASE RESERVICE			ACTION PLAN														
MAX SELECT			FORCE OFF														
SPLIT PREFERENCE PHASES																	
PHASE(S)		1	2	3	4	5	6	7	8								
SPLIT																	
PREFERENCE 1																	
PREFERENCE 2																	
SPLIT EXT (SEC)																	
VEH PERM			DISP														
RING DISP			(RING 2-4)														
PHASE(S)		9	10	11	12	13	14	15	16								
SPLIT																	
PREFERENCE 1																	
PREFERENCE 2																	
SPLIT DEMAND PATTERN																	
PHASE(S)		1	2	3	4	5	6	7	8	9	10	11	12	13	14	15	16
COORD																	
VEH RECALL																	
PED RECALL																	
MAX RECALL																	
OMIT																	
SPECIAL FUNCTION OUTPUTS																	

PROGRAM REFERENCE CARD

INTERSECTION: HAWTHORNE BL @ IMPERIAL HWY Date Prepared: 10-9-14 SDD By: MC
T.S. No.: 1456 Date Implemented: _____ By: _____

COORDINATION SUBMENU

3-2. COORDINATOR PATTERN (CONTINUED)

COORDINATOR PATTERN	5																		
USE SPLIT PATTERN	5	SPLIT SUM																	
TS2 (PAT - OFF)																			
CYCLE		STD (COS)																	
OFFSET VALUE		DWELL/ADD TIME																	
ACTUATED COORD		TIMING PLAN																	
ACT WALK REST		SEQUENCE																	
PHASE RESERVICE		ACTION PLAN																	
MAX SELECT		FORCE OFF																	
SPLIT PREFERENCE PHASES																			
PHASE(S)		1	2	3	4	5	6	7	8										
SPLIT																			
PREFERENCE 1																			
PREFERENCE 2																			
SPLIT EXT (SEC)																			
VEH PERM		DISP																	
RING DISP		(RING 2-4)																	
PHASE(S)		9	10	11	12	13	14	15	16										
SPLIT																			
PREFERENCE 1																			
PREFERENCE 2																			
SPLIT DEMAND PATTERN																			
PHASE(S)		1	2	3	4	5	6	7	8	X-ARTERIAL PATTERN		9	10	11	12	13	14	15	16
COORD																			
VEH RECALL																			
PED RECALL																			
MAX RECALL																			
OMIT																			
SPECIAL FUNCTION OUTPUTS																			

COORDINATOR PATTERN	6																		
USE SPLIT PATTERN	6	SPLIT SUM																	
TS2 (PAT - OFF)																			
CYCLE		STD (COS)																	
OFFSET VALUE		DWELL/ADD TIME																	
ACTUATED COORD		TIMING PLAN																	
ACT WALK REST		SEQUENCE																	
PHASE RESERVICE		ACTION PLAN																	
MAX SELECT		FORCE OFF																	
SPLIT PREFERENCE PHASES																			
PHASE(S)		1	2	3	4	5	6	7	8										
SPLIT																			
PREFERENCE 1																			
PREFERENCE 2																			
SPLIT EXT (SEC)																			
VEH PERM		DISP																	
RING DISP		(RING 2-4)																	
PHASE(S)		9	10	11	12	13	14	15	16										
SPLIT																			
PREFERENCE 1																			
PREFERENCE 2																			
SPLIT DEMAND PATTERN																			
PHASE(S)		1	2	3	4	5	6	7	8	X-ARTERIAL PATTERN		9	10	11	12	13	14	15	16
COORD																			
VEH RECALL																			
PED RECALL																			
MAX RECALL																			
OMIT																			
SPECIAL FUNCTION OUTPUTS																			

120 COORDINATION PATTERNS AVAILABLE

PROGRAM REFERENCE CARD

INTERSECTION: HAWTHORNE BL @ IMPERIAL HWY Date Prepared: 10-9-14 SDD By: MC
T.S. No.: 1456 Date Implemented: _____ By: _____

PREEMPT SUBMENU

4-2. ENABLE PREEMPT FILTERING / TSP / SCP

FILTERED INPUT	SOLID		PULSING	
1				
2				
3				
4				
5				
6				
7				
8				
9				
10				

4-3. TSP / SCP PLAN

TSP / SCP PLAN	1	2	3	4	5	6										
TSP / SCP ENABLE																
SIGNAL TYPE																
DET LOCK																
DELAY TIME																
MAX PRESENCE																
PREEMPT ENABLES RESERVICE																
NO DELAY IN TSP																
ACT SF INHIBIT																
RESERVICE CYCLES																
BUS HEADING																
TSP OR SCP			FREE DEFAULT PATTERN													
HEADWAY ALLOWANCE																
TSP / SCP PHASE																
	1	2	3	4	5	6	7	8	9	10	11	12	13	14	15	16
TSP / SCP1																
TSP / SCP2																
TSP / SCP3																
TSP / SCP4																
TSP / SCP5																
TSP / SCP6																

8-5.

CITY			INTERSECTION	
------	--	--	--------------	--

4-4. TSP / SCP SPLIT PATTERN

TSP / SCP SPLIT PATTERN		SPL DM							
IN EFFECT TIMING PLAN	PHASE	1	2	3	4	5	6	7	8
TSP / SCP MAX RDTN									
MIN GREEN									
PHASE	9	10	11	12	13	14	15	16	
TSP / SCP MAX RDTN									
MIN GREEN									

TSP / SCP SPLIT PATTERN		SPL DM							
IN EFFECT TIMING PLAN	PHASE	1	2	3	4	5	6	7	8
TSP / SCP MAX RDTN									
MIN GREEN									
PHASE	9	10	11	12	13	14	15	16	
TSP / SCP MAX RDTN									
MIN GREEN									

TSP / SCP SPLIT PATTERN		SPL DM							
IN EFFECT TIMING PLAN	PHASE	1	2	3	4	5	6	7	8
TSP / SCP MAX RDTN									
MIN GREEN									
PHASE	9	10	11	12	13	14	15	16	
TSP / SCP MAX RDTN									
MIN GREEN									

TSP / SCP SPLIT PATTERN		SPL DM							
IN EFFECT TIMING PLAN	PHASE	1	2	3	4	5	6	7	8
TSP / SCP MAX RDTN									
MIN GREEN									
PHASE	9	10	11	12	13	14	15	16	
TSP / SCP MAX RDTN									
MIN GREEN									

120 TSP / SCP SPLIT PATTERNS AVAILABLE

INTERSECTION:

HAWTHORNE BL @ IMPERIAL HWY

Date Prepared: 10-4-14 SDP By: MAC

T.S. No.: 1456

Date Implemented: By:

TIME BASE SUBMENU

5-2. ACTION PLAN (CONTINUED)

ACTION PLAN		3															
PATTERN		SYSTEM OVERRIDE															
TIMING PLAN		CONTROLLER SEQUENCE															
VEHICLE DETECTOR PLAN		DETECTOR LOG															
FLASH		RED REST															
VEH DETECTOR DIAG PLAN		PED DETECTOR DIAG PLAN															
DIMMING ENABLE		PRIORITY RETURN															
PED PRIORITY RETURN		QUEUE DELAY															
PMT COND DELAY																	
	PHASE	1	2	3	4	5	6	7	8	9	10	11	12	13	14	15	16
PED RECALL																	
WALK 2																	
VEH EXT 2																	
VEH RECALL																	
MAX RECALL																	
MAX 2																	
	PHASE	1	2	3	4	5	6	7	8	9	10	11	12	13	14	15	16
MAX 3																	
COND SERV INHIBIT																	
OMIT																	
SPECIAL FUNCTION																	(1-8)
AUX FUNCTION																	(1-3)
		1	2	3	4	5	6	7	8	9	10	11	12	13	14	15	
LP 1-15																	
LP 16-30																	
LP 31-45																	
LP 46-60																	
LP 61-75																	
LP 76-90																	
LP 91-100																	

ACTION PLAN		4															
PATTERN		SYSTEM OVERRIDE															
TIMING PLAN		CONTROLLER SEQUENCE															
VEHICLE DETECTOR PLAN		DETECTOR LOG															
FLASH		RED REST															
VEH DETECTOR DIAG PLAN		PED DETECTOR DIAG PLAN															
DIMMING ENABLE		PRIORITY RETURN															
PED PRIORITY RETURN		QUEUE DELAY															
PMT COND DELAY																	
	PHASE	1	2	3	4	5	6	7	8	9	10	11	12	13	14	15	16
PED RECALL																	
WALK 2																	
VEH EXT 2																	
VEH RECALL																	
MAX RECALL																	
MAX 2																	
	PHASE	1	2	3	4	5	6	7	8	9	10	11	12	13	14	15	16
MAX 3																	
COND SERV INHIBIT																	
OMIT																	
SPECIAL FUNCTION																	(1-8)
AUX FUNCTION																	(1-3)
		1	2	3	4	5	6	7	8	9	10	11	12	13	14	15	
LP 1-15																	
LP 16-30																	
LP 31-45																	
LP 46-60																	
LP 61-75																	
LP 76-90																	
LP 91-100																	

ACTION PLAN		5															
PATTERN		SYSTEM OVERRIDE															
TIMING PLAN		CONTROLLER SEQUENCE															
VEHICLE DETECTOR PLAN		DETECTOR LOG															
FLASH		RED REST															
VEH DETECTOR DIAG PLAN		PED DETECTOR DIAG PLAN															
DIMMING ENABLE		PRIORITY RETURN															
PED PRIORITY RETURN		QUEUE DELAY															
PMT COND DELAY																	
	PHASE	1	2	3	4	5	6	7	8	9	10	11	12	13	14	15	16
PED RECALL																	
WALK 2																	
VEH EXT 2																	
VEH RECALL																	
MAX RECALL																	
MAX 2																	
	PHASE	1	2	3	4	5	6	7	8	9	10	11	12	13	14	15	16
MAX 3																	
COND SERV INHIBIT																	
OMIT																	
SPECIAL FUNCTION																	(1-8)
AUX FUNCTION																	(1-3)
		1	2	3	4	5	6	7	8	9	10	11	12	13	14	15	
LP 1-15																	
LP 16-30																	
LP 31-45																	
LP 46-60																	
LP 61-75																	
LP 76-90																	
LP 91-100																	

ACTION PLAN		100															
PATTERN		SYSTEM OVERRIDE															
TIMING PLAN		CONTROLLER SEQUENCE															
VEHICLE DETECTOR PLAN		DETECTOR LOG															
FLASH		RED REST															
VEH DETECTOR DIAG PLAN		PED DETECTOR DIAG PLAN															
DIMMING ENABLE		PRIORITY RETURN															
PED PRIORITY RETURN		QUEUE DELAY															
PMT COND DELAY																	
	PHASE	1	2	3	4	5	6	7	8	9	10	11	12	13	14	15	16
PED RECALL																	
WALK 2																	
VEH EXT 2																	
VEH RECALL																	
MAX RECALL																	
MAX 2																	
	PHASE	1	2	3	4	5	6	7	8	9	10	11	12	13	14	15	16
MAX 3																	
COND SERV INHIBIT																	
OMIT																	
SPECIAL FUNCTION																	(1-8)
AUX FUNCTION																	(1-3)
		1	2	3	4	5	6	7	8	9	10	11	12	13	14	15	
LP 1-15																	
LP 16-30																	
LP 31-45																	
LP 46-60																	
LP 61-75																	
LP 76-90																	
LP 91-100																	

PROGRAM REFERENCE CARD

INTERSECTION: HAWTHORNE BL @ IMPERIAL HWY Date Prepared: 10-9-14 JDD By: JAL

T.S. No.: 1456 Date Implemented: _____ By: _____

TIME BASE SUBMENU

5-3. DAY PLAN

DAY PLAN IN EFFECT		
DAY PLAN		1
EVENT	ACTION PLAN	START TIME
1		
2		
3		
4		
5		
6		
7		
8		
9		
10		
11		
12		
13		
14		
15		
16		
17		
18		
19		
20		
21		
22		
23		
24		
25		
26		
27		
28		
29		
30		
31		
32		
33		
34		
35		
36		
37		
38		
39		
40		
41		
42		
43		
44		
45		
46		
47		
48		
49		
50		

DAY PLAN IN EFFECT		
DAY PLAN		2
EVENT	ACTION PLAN	START TIME
1		
2		
3		
4		
5		
6		
7		
8		
9		
10		
11		
12		
13		
14		
15		
16		
17		
18		
19		
20		
21		
22		
23		
24		
25		
26		
27		
28		
29		
30		
31		
32		
33		
34		
35		
36		
37		
38		
39		
40		
41		
42		
43		
44		
45		
46		
47		
48		
49		
50		

DAY PLAN IN EFFECT		
DAY PLAN		3
EVENT	ACTION PLAN	START TIME
1		
2		
3		
4		
5		
6		
7		
8		
9		
10		
11		
12		
13		
14		
15		
16		
17		
18		
19		
20		
21		
22		
23		
24		
25		
26		
27		
28		
29		
30		
31		
32		
33		
34		
35		
36		
37		
38		
39		
40		
41		
42		
43		
44		
45		
46		
47		
48		
49		
50		

PROGRAM REFERENCE CARD

INTERSECTION: HAWTHORNE BL @ IMPERIAL HWY Date Prepared: 10-9-14 JDD By: MC

T.S. No.: 1456 Date Implemented: _____ By: _____

TIME BASE SUBMENU

5-4. SCHEDULE

SCHEDULE NUMBER		1														
DAY PLAN NUMBER		1		CLEAR ALL FIELDS												
SELECT ALL	MONTHS	DOW		DOM												
MONTH	JAN	FEB	MAR	APR	MAY	JUN	JUL	AUG	SEP	OCT	NOV	DEC				
DAY OF WEEK (DOW)	SUN	MON	TUE	WED	THU	FRI	SAT									
DAY OF MONTH (DOM)	1	2	3	4	5	6	7	8	9	10	11					
	12	13	14	15	16	17	18	19	20	21	22					
	23	24	25	26	27	28	29	30	31							

SCHEDULE NUMBER		2														
DAY PLAN NUMBER		2		CLEAR ALL FIELDS												
SELECT ALL	MONTHS	DOW		DOM												
MONTH	JAN	FEB	MAR	APR	MAY	JUN	JUL	AUG	SEP	OCT	NOV	DEC				
DAY OF WEEK (DOW)	SUN	MON	TUE	WED	THU	FRI	SAT									
DAY OF MONTH (DOM)	1	2	3	4	5	6	7	8	9	10	11					
	12	13	14	15	16	17	18	19	20	21	22					
	23	24	25	26	27	28	29	30	31							

SCHEDULE NUMBER		3														
DAY PLAN NUMBER		3		CLEAR ALL FIELDS												
SELECT ALL	MONTHS	DOW		DOM												
MONTH	JAN	FEB	MAR	APR	MAY	JUN	JUL	AUG	SEP	OCT	NOV	DEC				
DAY OF WEEK (DOW)	SUN	MON	TUE	WED	THU	FRI	SAT									
DAY OF MONTH (DOM)	1	2	3	4	5	6	7	8	9	10	11					
	12	13	14	15	16	17	18	19	20	21	22					
	23	24	25	26	27	28	29	30	31							

SCHEDULE NUMBER		4														
DAY PLAN NUMBER		4		CLEAR ALL FIELDS												
SELECT ALL	MONTHS	DOW		DOM												
MONTH	JAN	FEB	MAR	APR	MAY	JUN	JUL	AUG	SEP	OCT	NOV	DEC				
DAY OF WEEK (DOW)	SUN	MON	TUE	WED	THU	FRI	SAT									
DAY OF MONTH (DOM)	1	2	3	4	5	6	7	8	9	10	11					
	12	13	14	15	16	17	18	19	20	21	22					
	23	24	25	26	27	28	29	30	31							

SCHEDULE NUMBER		5														
DAY PLAN NUMBER		5		CLEAR ALL FIELDS												
SELECT ALL	MONTHS	DOW		DOM												
MONTH	JAN	FEB	MAR	APR	MAY	JUN	JUL	AUG	SEP	OCT	NOV	DEC				
DAY OF WEEK (DOW)	SUN	MON	TUE	WED	THU	FRI	SAT									
DAY OF MONTH (DOM)	1	2	3	4	5	6	7	8	9	10	11					
	12	13	14	15	16	17	18	19	20	21	22					
	23	24	25	26	27	28	29	30	31							

SCHEDULE NUMBER		6														
DAY PLAN NUMBER		6		CLEAR ALL FIELDS												
SELECT ALL	MONTHS	DOW		DOM												
MONTH	JAN	FEB	MAR	APR	MAY	JUN	JUL	AUG	SEP	OCT	NOV	DEC				
DAY OF WEEK (DOW)	SUN	MON	TUE	WED	THU	FRI	SAT									
DAY OF MONTH (DOM)	1	2	3	4	5	6	7	8	9	10	11					
	12	13	14	15	16	17	18	19	20	21	22					
	23	24	25	26	27	28	29	30	31							

PROGRAM REFERENCE CARD

INTERSECTION: HAWTHORNE BL @ IMPERIAL HWY Date Prepared: 10-9-14 SDD By: MC

T.S. No.: 1456 Date Implemented: _____ By: _____

TIME BASE SUBMENU

5-5. EXCEPTION DAY PROGRAM

EXCEPTION DAY	FLOAT / FIXED	MON / MON	DOW / DOM	WOM / YEAR	DAY PLAN
1					
2					
3					
4					
5					
6					
7					
8					
9					
10					
11					
12					
13					
14					
15					
16					
17					
18					
19					
20					
21					
22					
23					
24					
25					
26					
27					
28					
29					
30					
31					
32					
33					
34					
35					
36					

PROGRAM REFERENCE CARD

INTERSECTION: HAWTHORNE BL @ IMPERIAL HWY

Date Prepared: 10-9-14 SDP By: ML

T.S. No.: 1456

Date Implemented: _____ By: _____

DETECTOR SUBMENU

6-1. VEHICLE DETECTOR PHASE ASSIGNMENT

VEHICLE DETECTOR PLAN NUMBER		1																TYPE*
DETECTOR	PHASE	1	2	3	4	5	6	7	8	9	10	11	12	13	14	15	16	
1	2		X															S
2	2		X															S
3	4				X													S
4	4				X													S
5	6						X											S
6	6						X											S
7	8								X									S
8	8								X									S
9	6						X											S
10	2		X															S
11	8								X									S
12	4				X													S
13																		
14																		
15																		
16																		
17	5						X											S
18	5						X											S
19	2		X															S
20	2		X															S
21	2		X															S
22	2		X															S
23	7								X									S
24	4				X													S
25	4				X													S
26	4				X													S
27	1	X																S
28	6						X											S
29	6						X											S
30	6						X											S
31	3			X														S
32	8								X									S
33	8								X									S
34	8								X									S
35																		
36																		
37																		
38																		
39																		
40																		
41																		
42																		
43																		
44																		
45																		
46																		
47																		
48																		
49																		
50																		
51																		
52																		
53																		
54																		
55																		
56																		
57																		
58																		
59																		
60																		
61																		
62																		
63																		
64																		

*DETECTOR TYPE

- S - STANDARD
- D - DISCONNECT
- TYPE Q/STOP BAR
- P - PASSAGE
- TYPE Q/STOP BAR
- C - CALLING
- R - RED EXTENSION
- G - GREEN EXTENSION/
- DELAY
- N - NTCIP
- B - BIKE

INTERSECTION: HAWTHORNE BL @ IMPERIAL HWY Date Prepared: 10-9-14 SDD By: MC
T.S. No.: 1456 DETECTOR SUBMENU Date Implemented: _____ By: _____

6-2. VEHICLE DETECTOR SETUP

DETECTOR NUMBER		1																
ECPI TYPE		S																
VEH DETECTOR PLAN #		1																
TS2 DETECTOR		ECPI LOG																
DETECTOR	PHASE	1	2	3	4	5	6	7	8	9	10	11	12	13	14	15	16	
1	2		X															
CALL OPTION		DELAY TIME																
EXTEND OPTIONS	PASSAGE	EXTENSION TIME														2.0		
	QUEUE	QUEUE LIMIT																
	TIME																	
USE ADDED INITIAL	X														CROSS SWITCH PHASE			
LOCK IN															NTCIP VOL		OCC.	
DISCONNECT TIME															PASSAGE TIME			
PMT QUEUE DELAY																		

DETECTOR NUMBER		5																
ECPI TYPE		S																
VEH DETECTOR PLAN #		1																
TS2 DETECTOR		ECPI LOG																
DETECTOR	PHASE	1	2	3	4	5	6	7	8	9	10	11	12	13	14	15	16	
5	6					X												
CALL OPTION		DELAY TIME																
EXTEND OPTIONS	PASSAGE	EXTENSION TIME														2.0		
	QUEUE	QUEUE LIMIT																
	TIME																	
USE ADDED INITIAL	X														CROSS SWITCH PHASE			
LOCK IN															NTCIP VOL		OCC.	
DISCONNECT TIME															PASSAGE TIME			
PMT QUEUE DELAY																		

DETECTOR NUMBER		2																
ECPI TYPE		S																
VEH DETECTOR PLAN #		1																
TS2 DETECTOR		ECPI LOG																
DETECTOR	PHASE	1	2	3	4	5	6	7	8	9	10	11	12	13	14	15	16	
2	2		X															
CALL OPTION		DELAY TIME																
EXTEND OPTIONS	PASSAGE	EXTENSION TIME														2.0		
	QUEUE	QUEUE LIMIT																
	TIME																	
USE ADDED INITIAL	X														CROSS SWITCH PHASE			
LOCK IN															NTCIP VOL		OCC.	
DISCONNECT TIME															PASSAGE TIME			
PMT QUEUE DELAY																		

DETECTOR NUMBER		6																
ECPI TYPE		S																
VEH DETECTOR PLAN #		1																
TS2 DETECTOR		ECPI LOG																
DETECTOR	PHASE	1	2	3	4	5	6	7	8	9	10	11	12	13	14	15	16	
6	6					X												
CALL OPTION		DELAY TIME																
EXTEND OPTIONS	PASSAGE	EXTENSION TIME														2.0		
	QUEUE	QUEUE LIMIT																
	TIME																	
USE ADDED INITIAL	X														CROSS SWITCH PHASE			
LOCK IN															NTCIP VOL		OCC.	
DISCONNECT TIME															PASSAGE TIME			
PMT QUEUE DELAY																		

DETECTOR NUMBER		3																
ECPI TYPE		S																
VEH DETECTOR PLAN #		1																
TS2 DETECTOR		ECPI LOG																
DETECTOR	PHASE	1	2	3	4	5	6	7	8	9	10	11	12	13	14	15	16	
3	4				X													
CALL OPTION		DELAY TIME																
EXTEND OPTIONS	PASSAGE	EXTENSION TIME														2.0		
	QUEUE	QUEUE LIMIT																
	TIME																	
USE ADDED INITIAL	X														CROSS SWITCH PHASE			
LOCK IN															NTCIP VOL		OCC.	
DISCONNECT TIME															PASSAGE TIME			
PMT QUEUE DELAY																		

DETECTOR NUMBER		7																
ECPI TYPE		S																
VEH DETECTOR PLAN #		1																
TS2 DETECTOR		ECPI LOG																
DETECTOR	PHASE	1	2	3	4	5	6	7	8	9	10	11	12	13	14	15	16	
7	8								X									
CALL OPTION		DELAY TIME																
EXTEND OPTIONS	PASSAGE	EXTENSION TIME														2.0		
	QUEUE	QUEUE LIMIT																
	TIME																	
USE ADDED INITIAL	X														CROSS SWITCH PHASE			
LOCK IN															NTCIP VOL		OCC.	
DISCONNECT TIME															PASSAGE TIME			
PMT QUEUE DELAY																		

DETECTOR NUMBER		4																
ECPI TYPE		S																
VEH DETECTOR PLAN #		1																
TS2 DETECTOR		ECPI LOG																
DETECTOR	PHASE	1	2	3	4	5	6	7	8	9	10	11	12	13	14	15	16	
4	4				X													
CALL OPTION		DELAY TIME																
EXTEND OPTIONS	PASSAGE	EXTENSION TIME														2.0		
	QUEUE	QUEUE LIMIT																
	TIME																	
USE ADDED INITIAL	X														CROSS SWITCH PHASE			
LOCK IN															NTCIP VOL		OCC.	
DISCONNECT TIME															PASSAGE TIME			
PMT QUEUE DELAY																		

DETECTOR NUMBER		8																
ECPI TYPE		S																
VEH DETECTOR PLAN #		1																
TS2 DETECTOR		ECPI LOG																
DETECTOR	PHASE	1	2	3	4	5	6	7	8	9	10	11	12	13	14	15	16	
8	8								X									
CALL OPTION		DELAY TIME																
EXTEND OPTIONS	PASSAGE	EXTENSION TIME														2.0		
	QUEUE	QUEUE LIMIT																
	TIME																	
USE ADDED INITIAL	X														CROSS SWITCH PHASE			
LOCK IN															NTCIP VOL		OCC.	
DISCONNECT TIME															PASSAGE TIME			
PMT QUEUE DELAY																		

DETECTOR TYPES: N - NTCIP S - STANDARD P - PASSAGE TYPE Q / STOP BAR R - RED EXTENSION
B - BIKE C - CALLING D - DISCONNECT G - GREEN EXTENTION / DELAY
TYPE Q / STOP BAR

INTERSECTION: HAWTHORNE BL @ IMPERIAL HWY Date Prepared: 10-9-14 SDD By: MC
T.S. No.: 1456 DETECTOR SUBMENU Date Implemented: _____ By: _____

6-2. VEHICLE DETECTOR SETUP

DETECTOR NUMBER		9																	
ECPI TYPE		S														VEH DETECTOR PLAN #		1	
TS2 DETECTOR		ECPI LOG																	
DETECTOR	PHASE	1	2	3	4	5	6	7	8	9	10	11	12	13	14	15	16		
9	6						X												
CALL OPTION		DELAY TIME																	
EXTEND OPTIONS	PASSAGE															EXTENSION TIME		2.0	
	QUEUE															QUEUE LIMIT			
	TIME																		
USE ADDED INITIAL		X														CROSS SWITCH PHASE			
LOCK IN																NTCIP VOL		OCC.	
DISCONNECT TIME		PASSAGE TIME																	
PMT QUEUE DELAY																			

DETECTOR NUMBER		13																			
ECPI TYPE																VEH DETECTOR PLAN #					
TS2 DETECTOR		ECPI LOG																			
DETECTOR	PHASE	1	2	3	4	5	6	7	8	9	10	11	12	13	14	15	16				
CALL OPTION		DELAY TIME																			
EXTEND OPTIONS	PASSAGE															EXTENSION TIME					
	QUEUE															QUEUE LIMIT					
	TIME																				
USE ADDED INITIAL																		CROSS SWITCH PHASE			
LOCK IN																NTCIP VOL		OCC.			
DISCONNECT TIME		PASSAGE TIME																			
PMT QUEUE DELAY																					

DETECTOR NUMBER		10																	
ECPI TYPE		S														VEH DETECTOR PLAN #		1	
TS2 DETECTOR		ECPI LOG																	
DETECTOR	PHASE	1	2	3	4	5	6	7	8	9	10	11	12	13	14	15	16		
10	2		X																
CALL OPTION		DELAY TIME																	
EXTEND OPTIONS	PASSAGE															EXTENSION TIME		2.0	
	QUEUE															QUEUE LIMIT			
	TIME																		
USE ADDED INITIAL		X														CROSS SWITCH PHASE			
LOCK IN																NTCIP VOL		OCC.	
DISCONNECT TIME		PASSAGE TIME																	
PMT QUEUE DELAY																			

DETECTOR NUMBER		14																			
ECPI TYPE																VEH DETECTOR PLAN #					
TS2 DETECTOR		ECPI LOG																			
DETECTOR	PHASE	1	2	3	4	5	6	7	8	9	10	11	12	13	14	15	16				
CALL OPTION		DELAY TIME																			
EXTEND OPTIONS	PASSAGE															EXTENSION TIME					
	QUEUE															QUEUE LIMIT					
	TIME																				
USE ADDED INITIAL																		CROSS SWITCH PHASE			
LOCK IN																NTCIP VOL		OCC.			
DISCONNECT TIME		PASSAGE TIME																			
PMT QUEUE DELAY																					

DETECTOR NUMBER		11																	
ECPI TYPE		S														VEH DETECTOR PLAN #		1	
TS2 DETECTOR		ECPI LOG																	
DETECTOR	PHASE	1	2	3	4	5	6	7	8	9	10	11	12	13	14	15	16		
11	8							X											
CALL OPTION		DELAY TIME																	
EXTEND OPTIONS	PASSAGE															EXTENSION TIME		2.0	
	QUEUE															QUEUE LIMIT			
	TIME																		
USE ADDED INITIAL		X														CROSS SWITCH PHASE			
LOCK IN																NTCIP VOL		OCC.	
DISCONNECT TIME		PASSAGE TIME																	
PMT QUEUE DELAY																			

DETECTOR NUMBER		15																			
ECPI TYPE																VEH DETECTOR PLAN #					
TS2 DETECTOR		ECPI LOG																			
DETECTOR	PHASE	1	2	3	4	5	6	7	8	9	10	11	12	13	14	15	16				
CALL OPTION		DELAY TIME																			
EXTEND OPTIONS	PASSAGE															EXTENSION TIME					
	QUEUE															QUEUE LIMIT					
	TIME																				
USE ADDED INITIAL																		CROSS SWITCH PHASE			
LOCK IN																NTCIP VOL		OCC.			
DISCONNECT TIME		PASSAGE TIME																			
PMT QUEUE DELAY																					

DETECTOR NUMBER		12																	
ECPI TYPE		S														VEH DETECTOR PLAN #		1	
TS2 DETECTOR		ECPI LOG																	
DETECTOR	PHASE	1	2	3	4	5	6	7	8	9	10	11	12	13	14	15	16		
12	4				X														
CALL OPTION		DELAY TIME																	
EXTEND OPTIONS	PASSAGE															EXTENSION TIME		2.0	
	QUEUE															QUEUE LIMIT			
	TIME																		
USE ADDED INITIAL		X														CROSS SWITCH PHASE			
LOCK IN																NTCIP VOL		OCC.	
DISCONNECT TIME		PASSAGE TIME																	
PMT QUEUE DELAY																			

DETECTOR NUMBER		16																			
ECPI TYPE																VEH DETECTOR PLAN #					
TS2 DETECTOR		ECPI LOG																			
DETECTOR	PHASE	1	2	3	4	5	6	7	8	9	10	11	12	13	14	15	16				
CALL OPTION		DELAY TIME																			
EXTEND OPTIONS	PASSAGE															EXTENSION TIME					
	QUEUE															QUEUE LIMIT					
	TIME																				
USE ADDED INITIAL																		CROSS SWITCH PHASE			
LOCK IN																NTCIP VOL		OCC.			
DISCONNECT TIME		PASSAGE TIME																			
PMT QUEUE DELAY																					

DETECTOR TYPES: N - NTCIP S - STANDARD P - PASSAGE TYPE Q / STOP BAR R - RED EXTENSION
B - BIKE C - CALLING D - DISCONNECT G - GREEN EXTENSION / DELAY
TYPE Q / STOP BAR

PROGRAM REFERENCE CARD

INTERSECTION: HAWTHORNE BL @ IMPERIAL HWY

Date Prepared: 10-9-14 SDD By: MC

T.S. No.: 1456

DETECTOR SUBMENU

Date Implemented: _____ By: _____

6-2. VEHICLE DETECTOR SETUP

DETECTOR NUMBER		17															
ECPI TYPE		S					VEH DETECTOR PLAN #									1	
TS2 DETECTOR		ECPI LOG															
DETECTOR	PHASE	1	2	3	4	5	6	7	8	9	10	11	12	13	14	15	16
17	5					X											
CALL OPTION		DELAY TIME															
EXTEND OPTIONS	PASSAGE	EXTENSION TIME															
	QUEUE	QUEUE LIMIT															
	TIME																
USE ADDED INITIAL		CROSS SWITCH PHASE															
LOCK IN		NTCIP VOL OCC.															
DISCONNECT TIME		PASSAGE TIME															
PMT QUEUE DELAY																	

DETECTOR NUMBER		21															
ECPI TYPE		S					VEH DETECTOR PLAN #									1	
TS2 DETECTOR		ECPI LOG															
DETECTOR	PHASE	1	2	3	4	5	6	7	8	9	10	11	12	13	14	15	16
21	2		X														
CALL OPTION		DELAY TIME															
EXTEND OPTIONS	PASSAGE	EXTENSION TIME															
	QUEUE	QUEUE LIMIT															
	TIME																
USE ADDED INITIAL		CROSS SWITCH PHASE															
LOCK IN		NTCIP VOL OCC.															
DISCONNECT TIME		PASSAGE TIME															
PMT QUEUE DELAY																	

DETECTOR NUMBER		18															
ECPI TYPE		S					VEH DETECTOR PLAN #									1	
TS2 DETECTOR		ECPI LOG															
DETECTOR	PHASE	1	2	3	4	5	6	7	8	9	10	11	12	13	14	15	16
18	5					X											
CALL OPTION		DELAY TIME															
EXTEND OPTIONS	PASSAGE	EXTENSION TIME															
	QUEUE	QUEUE LIMIT															
	TIME																
USE ADDED INITIAL		CROSS SWITCH PHASE															
LOCK IN		NTCIP VOL OCC.															
DISCONNECT TIME		PASSAGE TIME															
PMT QUEUE DELAY																	

DETECTOR NUMBER		22															
ECPI TYPE		S					VEH DETECTOR PLAN #									1	
TS2 DETECTOR		ECPI LOG															
DETECTOR	PHASE	1	2	3	4	5	6	7	8	9	10	11	12	13	14	15	16
22	2		X														
CALL OPTION		DELAY TIME															
EXTEND OPTIONS	PASSAGE	EXTENSION TIME															
	QUEUE	QUEUE LIMIT															
	TIME																
USE ADDED INITIAL		CROSS SWITCH PHASE															
LOCK IN		NTCIP VOL OCC.															
DISCONNECT TIME		PASSAGE TIME															
PMT QUEUE DELAY																	

DETECTOR NUMBER		19															
ECPI TYPE		S					VEH DETECTOR PLAN #									1	
TS2 DETECTOR		ECPI LOG															
DETECTOR	PHASE	1	2	3	4	5	6	7	8	9	10	11	12	13	14	15	16
19	2		X														
CALL OPTION		DELAY TIME															
EXTEND OPTIONS	PASSAGE	EXTENSION TIME															
	QUEUE	QUEUE LIMIT															
	TIME																
USE ADDED INITIAL		CROSS SWITCH PHASE															
LOCK IN		NTCIP VOL OCC.															
DISCONNECT TIME		PASSAGE TIME															
PMT QUEUE DELAY																	

DETECTOR NUMBER		23															
ECPI TYPE		S					VEH DETECTOR PLAN #									1	
TS2 DETECTOR		ECPI LOG															
DETECTOR	PHASE	1	2	3	4	5	6	7	8	9	10	11	12	13	14	15	16
23	7							7									
CALL OPTION		DELAY TIME															
EXTEND OPTIONS	PASSAGE	EXTENSION TIME															
	QUEUE	QUEUE LIMIT															
	TIME																
USE ADDED INITIAL		CROSS SWITCH PHASE															
LOCK IN		NTCIP VOL OCC.															
DISCONNECT TIME		PASSAGE TIME															
PMT QUEUE DELAY																	

DETECTOR NUMBER		20															
ECPI TYPE		S					VEH DETECTOR PLAN #									1	
TS2 DETECTOR		ECPI LOG															
DETECTOR	PHASE	1	2	3	4	5	6	7	8	9	10	11	12	13	14	15	16
20	2		X														
CALL OPTION		DELAY TIME															
EXTEND OPTIONS	PASSAGE	EXTENSION TIME															
	QUEUE	QUEUE LIMIT															
	TIME																
USE ADDED INITIAL		CROSS SWITCH PHASE															
LOCK IN		NTCIP VOL OCC.															
DISCONNECT TIME		PASSAGE TIME															
PMT QUEUE DELAY																	

DETECTOR NUMBER		24															
ECPI TYPE		S					VEH DETECTOR PLAN #									1	
TS2 DETECTOR		ECPI LOG															
DETECTOR	PHASE	1	2	3	4	5	6	7	8	9	10	11	12	13	14	15	16
24	4				X												
CALL OPTION		DELAY TIME															
EXTEND OPTIONS	PASSAGE	EXTENSION TIME															
	QUEUE	QUEUE LIMIT															
	TIME																
USE ADDED INITIAL		CROSS SWITCH PHASE															
LOCK IN		NTCIP VOL OCC.															
DISCONNECT TIME		PASSAGE TIME															
PMT QUEUE DELAY																	

DETECTOR TYPES: N - NTCIP S - STANDARD P - PASSAGE TYPE Q / STOP BAR R - RED EXTENSION
B - BIKE C - CALLING D - DISCONNECT G - GREEN EXTENSION / DELAY
TYPE Q / STOP BAR

INTERSECTION: HAWTHORNE BL @ IMPERIAL HWY Date Prepared: 10-4-14 SDD By: MC
T.S. No.: 1456 DETECTOR SUBMENU Date Implemented: _____ By: _____

6-2. VEHICLE DETECTOR SETUP

DETECTOR NUMBER		25															
ECPI TYPE		S					VEH DETECTOR PLAN #				1						
TS2 DETECTOR		ECPI LOG															
DETECTOR	PHASE	1	2	3	4	5	6	7	8	9	10	11	12	13	14	15	16
25	4				X												
CALL OPTION		DELAY TIME															
EXTEND OPTIONS	PASSAGE	EXTENSION TIME															
	QUEUE	QUEUE LIMIT															
	TIME																
USE ADDED INITIAL		CROSS SWITCH PHASE															
LOCK IN		NTCIP VOL				OCC.											
DISCONNECT TIME		PASSAGE TIME															
PMT QUEUE DELAY																	

DETECTOR NUMBER		29															
ECPI TYPE		S					VEH DETECTOR PLAN #				1						
TS2 DETECTOR		ECPI LOG															
DETECTOR	PHASE	1	2	3	4	5	6	7	8	9	10	11	12	13	14	15	16
29	6					X											
CALL OPTION		DELAY TIME															
EXTEND OPTIONS	PASSAGE	EXTENSION TIME															
	QUEUE	QUEUE LIMIT															
	TIME																
USE ADDED INITIAL		CROSS SWITCH PHASE															
LOCK IN		NTCIP VOL				OCC.											
DISCONNECT TIME		PASSAGE TIME															
PMT QUEUE DELAY																	

DETECTOR NUMBER		26															
ECPI TYPE		S					VEH DETECTOR PLAN #				1						
TS2 DETECTOR		ECPI LOG															
DETECTOR	PHASE	1	2	3	4	5	6	7	8	9	10	11	12	13	14	15	16
26	4				X												
CALL OPTION		DELAY TIME															
EXTEND OPTIONS	PASSAGE	EXTENSION TIME															
	QUEUE	QUEUE LIMIT															
	TIME																
USE ADDED INITIAL		CROSS SWITCH PHASE															
LOCK IN		NTCIP VOL				OCC.											
DISCONNECT TIME		PASSAGE TIME															
PMT QUEUE DELAY																	

DETECTOR NUMBER		30															
ECPI TYPE		S					VEH DETECTOR PLAN #				1						
TS2 DETECTOR		ECPI LOG															
DETECTOR	PHASE	1	2	3	4	5	6	7	8	9	10	11	12	13	14	15	16
30	6					X											
CALL OPTION		DELAY TIME															
EXTEND OPTIONS	PASSAGE	EXTENSION TIME															
	QUEUE	QUEUE LIMIT															
	TIME																
USE ADDED INITIAL		CROSS SWITCH PHASE															
LOCK IN		NTCIP VOL				OCC.											
DISCONNECT TIME		PASSAGE TIME															
PMT QUEUE DELAY																	

DETECTOR NUMBER		27															
ECPI TYPE		S					VEH DETECTOR PLAN #				1						
TS2 DETECTOR		ECPI LOG															
DETECTOR	PHASE	1	2	3	4	5	6	7	8	9	10	11	12	13	14	15	16
27	1	X															
CALL OPTION		DELAY TIME															
EXTEND OPTIONS	PASSAGE	EXTENSION TIME															
	QUEUE	QUEUE LIMIT															
	TIME																
USE ADDED INITIAL		CROSS SWITCH PHASE															
LOCK IN		NTCIP VOL				OCC.											
DISCONNECT TIME		PASSAGE TIME															
PMT QUEUE DELAY																	

DETECTOR NUMBER		31															
ECPI TYPE		S					VEH DETECTOR PLAN #				1						
TS2 DETECTOR		ECPI LOG															
DETECTOR	PHASE	1	2	3	4	5	6	7	8	9	10	11	12	13	14	15	16
31	3			X													
CALL OPTION		DELAY TIME															
EXTEND OPTIONS	PASSAGE	EXTENSION TIME															
	QUEUE	QUEUE LIMIT															
	TIME																
USE ADDED INITIAL		CROSS SWITCH PHASE															
LOCK IN		NTCIP VOL				OCC.											
DISCONNECT TIME		PASSAGE TIME															
PMT QUEUE DELAY																	

DETECTOR NUMBER		28															
ECPI TYPE		S					VEH DETECTOR PLAN #				1						
TS2 DETECTOR		ECPI LOG															
DETECTOR	PHASE	1	2	3	4	5	6	7	8	9	10	11	12	13	14	15	16
28	6					X											
CALL OPTION		DELAY TIME															
EXTEND OPTIONS	PASSAGE	EXTENSION TIME															
	QUEUE	QUEUE LIMIT															
	TIME																
USE ADDED INITIAL		CROSS SWITCH PHASE															
LOCK IN		NTCIP VOL				OCC.											
DISCONNECT TIME		PASSAGE TIME															
PMT QUEUE DELAY																	

DETECTOR NUMBER		32															
ECPI TYPE		S					VEH DETECTOR PLAN #				1						
TS2 DETECTOR		ECPI LOG															
DETECTOR	PHASE	1	2	3	4	5	6	7	8	9	10	11	12	13	14	15	16
32	8							X									
CALL OPTION		DELAY TIME															
EXTEND OPTIONS	PASSAGE	EXTENSION TIME															
	QUEUE	QUEUE LIMIT															
	TIME																
USE ADDED INITIAL		CROSS SWITCH PHASE															
LOCK IN		NTCIP VOL				OCC.											
DISCONNECT TIME		PASSAGE TIME															
PMT QUEUE DELAY																	

DETECTOR TYPES: N - NTCIP S - STANDARD P - PASSAGE TYPE Q / STOP BAR R - RED EXTENSION
B - BIKE C - CALLING D - DISCONNECT G - GREEN EXTENTION / DELAY

TYPE Q / STOP BAR

INTERSECTION: HAWTHORNE BL @ IMPERIAL HWY Date Prepared: 10-9-14 SDD By: MC

T.S. No.: 1456 DETECTOR SUBMENU Date Implemented: _____ By: _____

6-2. VEHICLE DETECTOR SETUP

DETECTOR NUMBER		33															
ECPI TYPE		S					VEH DETECTOR PLAN #				1						
TS2 DETECTOR		ECPI LOG															
DETECTOR	PHASE	1	2	3	4	5	6	7	8	9	10	11	12	13	14	15	16
33	8								X								
CALL OPTION		DELAY TIME															
EXTEND OPTIONS	PASSAGE	EXTENSION TIME															
	QUEUE	QUEUE LIMIT															
	TIME																
USE ADDED INITIAL		CROSS SWITCH PHASE															
LOCK IN		NTCIP VOL				OCC.											
DISCONNECT TIME		PASSAGE TIME															
PMT QUEUE DELAY																	

DETECTOR NUMBER		37															
ECPI TYPE							VEH DETECTOR PLAN #										
TS2 DETECTOR		ECPI LOG															
DETECTOR	PHASE	1	2	3	4	5	6	7	8	9	10	11	12	13	14	15	16
CALL OPTION		DELAY TIME															
EXTEND OPTIONS	PASSAGE	EXTENSION TIME															
	QUEUE	QUEUE LIMIT															
	TIME																
USE ADDED INITIAL		CROSS SWITCH PHASE															
LOCK IN		NTCIP VOL				OCC.											
DISCONNECT TIME		PASSAGE TIME															
PMT QUEUE DELAY																	

DETECTOR NUMBER		34															
ECPI TYPE		S					VEH DETECTOR PLAN #				1						
TS2 DETECTOR		ECPI LOG															
DETECTOR	PHASE	1	2	3	4	5	6	7	8	9	10	11	12	13	14	15	16
34	8								X								
CALL OPTION		DELAY TIME															
EXTEND OPTIONS	PASSAGE	EXTENSION TIME															
	QUEUE	QUEUE LIMIT															
	TIME																
USE ADDED INITIAL		CROSS SWITCH PHASE															
LOCK IN		NTCIP VOL				OCC.											
DISCONNECT TIME		PASSAGE TIME															
PMT QUEUE DELAY																	

DETECTOR NUMBER		38															
ECPI TYPE							VEH DETECTOR PLAN #										
TS2 DETECTOR		ECPI LOG															
DETECTOR	PHASE	1	2	3	4	5	6	7	8	9	10	11	12	13	14	15	16
CALL OPTION		DELAY TIME															
EXTEND OPTIONS	PASSAGE	EXTENSION TIME															
	QUEUE	QUEUE LIMIT															
	TIME																
USE ADDED INITIAL		CROSS SWITCH PHASE															
LOCK IN		NTCIP VOL				OCC.											
DISCONNECT TIME		PASSAGE TIME															
PMT QUEUE DELAY																	

DETECTOR NUMBER		35															
ECPI TYPE							VEH DETECTOR PLAN #										
TS2 DETECTOR		ECPI LOG															
DETECTOR	PHASE	1	2	3	4	5	6	7	8	9	10	11	12	13	14	15	16
CALL OPTION		DELAY TIME															
EXTEND OPTIONS	PASSAGE	EXTENSION TIME															
	QUEUE	QUEUE LIMIT															
	TIME																
USE ADDED INITIAL		CROSS SWITCH PHASE															
LOCK IN		NTCIP VOL				OCC.											
DISCONNECT TIME		PASSAGE TIME															
PMT QUEUE DELAY																	

DETECTOR NUMBER		39															
ECPI TYPE							VEH DETECTOR PLAN #										
TS2 DETECTOR		ECPI LOG															
DETECTOR	PHASE	1	2	3	4	5	6	7	8	9	10	11	12	13	14	15	16
CALL OPTION		DELAY TIME															
EXTEND OPTIONS	PASSAGE	EXTENSION TIME															
	QUEUE	QUEUE LIMIT															
	TIME																
USE ADDED INITIAL		CROSS SWITCH PHASE															
LOCK IN		NTCIP VOL				OCC.											
DISCONNECT TIME		PASSAGE TIME															
PMT QUEUE DELAY																	

DETECTOR NUMBER		36															
ECPI TYPE							VEH DETECTOR PLAN #										
TS2 DETECTOR		ECPI LOG															
DETECTOR	PHASE	1	2	3	4	5	6	7	8	9	10	11	12	13	14	15	16
CALL OPTION		DELAY TIME															
EXTEND OPTIONS	PASSAGE	EXTENSION TIME															
	QUEUE	QUEUE LIMIT															
	TIME																
USE ADDED INITIAL		CROSS SWITCH PHASE															
LOCK IN		NTCIP VOL				OCC.											
DISCONNECT TIME		PASSAGE TIME															
PMT QUEUE DELAY																	

DETECTOR NUMBER		40															
ECPI TYPE							VEH DETECTOR PLAN #										
TS2 DETECTOR		ECPI LOG															
DETECTOR	PHASE	1	2	3	4	5	6	7	8	9	10	11	12	13	14	15	16
CALL OPTION		DELAY TIME															
EXTEND OPTIONS	PASSAGE	EXTENSION TIME															
	QUEUE	QUEUE LIMIT															
	TIME																
USE ADDED INITIAL		CROSS SWITCH PHASE															
LOCK IN		NTCIP VOL				OCC.											
DISCONNECT TIME		PASSAGE TIME															
PMT QUEUE DELAY																	

DETECTOR TYPES: N - NTCIP S - STANDARD P - PASSAGE TYPE Q / STOP BAR R - RED EXTENSION
 B - BIKE C - CALLING D - DISCONNECT G - GREEN EXTENTION / DELAY
 TYPE Q / STOP BAR

INTERSECTION: HAWTHORNE BL @ IMPERIAL HWY Date Prepared: 10-9-14SD By: MAC
T.S. No.: 1456 DETECTOR SUBMENU Date Implemented: _____ By: _____

6-2. VEHICLE DETECTOR SETUP

DETECTOR NUMBER		41															
ECPI TYPE		VEH DETECTOR PLAN #															
TS2 DETECTOR		ECPI LOG															
DETECTOR	PHASE	1	2	3	4	5	6	7	8	9	10	11	12	13	14	15	16
CALL OPTION		DELAY TIME															
EXTEND OPTIONS	PASSAGE	EXTENSION TIME															
	QUEUE	QUEUE LIMIT															
	TIME																
USE ADDED INITIAL		CROSS SWITCH PHASE															
LOCK IN		NTCIP VOL <input type="checkbox"/> OCC. <input type="checkbox"/>															
DISCONNECT TIME		PASSAGE TIME															
PMT QUEUE DELAY																	

DETECTOR NUMBER		45															
ECPI TYPE		VEH DETECTOR PLAN #															
TS2 DETECTOR		ECPI LOG															
DETECTOR	PHASE	1	2	3	4	5	6	7	8	9	10	11	12	13	14	15	16
CALL OPTION		DELAY TIME															
EXTEND OPTIONS	PASSAGE	EXTENSION TIME															
	QUEUE	QUEUE LIMIT															
	TIME																
USE ADDED INITIAL		CROSS SWITCH PHASE															
LOCK IN		NTCIP VOL <input type="checkbox"/> OCC. <input type="checkbox"/>															
DISCONNECT TIME		PASSAGE TIME															
PMT QUEUE DELAY																	

DETECTOR NUMBER		42															
ECPI TYPE		VEH DETECTOR PLAN #															
TS2 DETECTOR		ECPI LOG															
DETECTOR	PHASE	1	2	3	4	5	6	7	8	9	10	11	12	13	14	15	16
CALL OPTION		DELAY TIME															
EXTEND OPTIONS	PASSAGE	EXTENSION TIME															
	QUEUE	QUEUE LIMIT															
	TIME																
USE ADDED INITIAL		CROSS SWITCH PHASE															
LOCK IN		NTCIP VOL <input type="checkbox"/> OCC. <input type="checkbox"/>															
DISCONNECT TIME		PASSAGE TIME															
PMT QUEUE DELAY																	

DETECTOR NUMBER		46															
ECPI TYPE		VEH DETECTOR PLAN #															
TS2 DETECTOR		ECPI LOG															
DETECTOR	PHASE	1	2	3	4	5	6	7	8	9	10	11	12	13	14	15	16
CALL OPTION		DELAY TIME															
EXTEND OPTIONS	PASSAGE	EXTENSION TIME															
	QUEUE	QUEUE LIMIT															
	TIME																
USE ADDED INITIAL		CROSS SWITCH PHASE															
LOCK IN		NTCIP VOL <input type="checkbox"/> OCC. <input type="checkbox"/>															
DISCONNECT TIME		PASSAGE TIME															
PMT QUEUE DELAY																	

DETECTOR NUMBER		43															
ECPI TYPE		VEH DETECTOR PLAN #															
TS2 DETECTOR		ECPI LOG															
DETECTOR	PHASE	1	2	3	4	5	6	7	8	9	10	11	12	13	14	15	16
CALL OPTION		DELAY TIME															
EXTEND OPTIONS	PASSAGE	EXTENSION TIME															
	QUEUE	QUEUE LIMIT															
	TIME																
USE ADDED INITIAL		CROSS SWITCH PHASE															
LOCK IN		NTCIP VOL <input type="checkbox"/> OCC. <input type="checkbox"/>															
DISCONNECT TIME		PASSAGE TIME															
PMT QUEUE DELAY																	

DETECTOR NUMBER		47															
ECPI TYPE		VEH DETECTOR PLAN #															
TS2 DETECTOR		ECPI LOG															
DETECTOR	PHASE	1	2	3	4	5	6	7	8	9	10	11	12	13	14	15	16
CALL OPTION		DELAY TIME															
EXTEND OPTIONS	PASSAGE	EXTENSION TIME															
	QUEUE	QUEUE LIMIT															
	TIME																
USE ADDED INITIAL		CROSS SWITCH PHASE															
LOCK IN		NTCIP VOL <input type="checkbox"/> OCC. <input type="checkbox"/>															
DISCONNECT TIME		PASSAGE TIME															
PMT QUEUE DELAY																	

DETECTOR NUMBER		44															
ECPI TYPE		VEH DETECTOR PLAN #															
TS2 DETECTOR		ECPI LOG															
DETECTOR	PHASE	1	2	3	4	5	6	7	8	9	10	11	12	13	14	15	16
CALL OPTION		DELAY TIME															
EXTEND OPTIONS	PASSAGE	EXTENSION TIME															
	QUEUE	QUEUE LIMIT															
	TIME																
USE ADDED INITIAL		CROSS SWITCH PHASE															
LOCK IN		NTCIP VOL <input type="checkbox"/> OCC. <input type="checkbox"/>															
DISCONNECT TIME		PASSAGE TIME															
PMT QUEUE DELAY																	

DETECTOR NUMBER		48															
ECPI TYPE		VEH DETECTOR PLAN #															
TS2 DETECTOR		ECPI LOG															
DETECTOR	PHASE	1	2	3	4	5	6	7	8	9	10	11	12	13	14	15	16
CALL OPTION		DELAY TIME															
EXTEND OPTIONS	PASSAGE	EXTENSION TIME															
	QUEUE	QUEUE LIMIT															
	TIME																
USE ADDED INITIAL		CROSS SWITCH PHASE															
LOCK IN		NTCIP VOL <input type="checkbox"/> OCC. <input type="checkbox"/>															
DISCONNECT TIME		PASSAGE TIME															
PMT QUEUE DELAY																	

DETECTOR TYPES: N - NTCIP S - STANDARD P - PASSAGE TYPE Q / STOP BAR R - RED EXTENSION
B - BIKE C - CALLING D - DISCONNECT G - GREEN EXTENTION / DELAY
TYPE Q / STOP BAR

PROGRAM REFERENCE CARD

INTERSECTION: _____

HAWTHORNE BL @ IMPERIAL HWY

Date Prepared: 10-9-14 SDD By: MC

T.S. No.: 1456

DETECTOR SUBMENU

Date Implemented: _____ By: _____

6-2. VEHICLE DETECTOR SETUP

DETECTOR NUMBER		49															
ECPI TYPE		VEH DETECTOR PLAN #															
TS2 DETECTOR		ECPI LOG															
DETECTOR	PHASE	1	2	3	4	5	6	7	8	9	10	11	12	13	14	15	16
CALL OPTION		DELAY TIME															
EXTEND OPTIONS	PASSAGE	EXTENSION TIME															
	QUEUE	QUEUE LIMIT															
	TIME																
USE ADDED INITIAL		CROSS SWITCH PHASE															
LOCK IN		NTCIP VOL OCC.															
DISCONNECT TIME		PASSAGE TIME															
PMT QUEUE DELAY																	

DETECTOR NUMBER		53															
ECPI TYPE		VEH DETECTOR PLAN #															
TS2 DETECTOR		ECPI LOG															
DETECTOR	PHASE	1	2	3	4	5	6	7	8	9	10	11	12	13	14	15	16
CALL OPTION		DELAY TIME															
EXTEND OPTIONS	PASSAGE	EXTENSION TIME															
	QUEUE	QUEUE LIMIT															
	TIME																
USE ADDED INITIAL		CROSS SWITCH PHASE															
LOCK IN		NTCIP VOL OCC.															
DISCONNECT TIME		PASSAGE TIME															
PMT QUEUE DELAY																	

DETECTOR NUMBER		50															
ECPI TYPE		VEH DETECTOR PLAN #															
TS2 DETECTOR		ECPI LOG															
DETECTOR	PHASE	1	2	3	4	5	6	7	8	9	10	11	12	13	14	15	16
CALL OPTION		DELAY TIME															
EXTEND OPTIONS	PASSAGE	EXTENSION TIME															
	QUEUE	QUEUE LIMIT															
	TIME																
USE ADDED INITIAL		CROSS SWITCH PHASE															
LOCK IN		NTCIP VOL OCC.															
DISCONNECT TIME		PASSAGE TIME															
PMT QUEUE DELAY																	

DETECTOR NUMBER		54															
ECPI TYPE		VEH DETECTOR PLAN #															
TS2 DETECTOR		ECPI LOG															
DETECTOR	PHASE	1	2	3	4	5	6	7	8	9	10	11	12	13	14	15	16
CALL OPTION		DELAY TIME															
EXTEND OPTIONS	PASSAGE	EXTENSION TIME															
	QUEUE	QUEUE LIMIT															
	TIME																
USE ADDED INITIAL		CROSS SWITCH PHASE															
LOCK IN		NTCIP VOL OCC.															
DISCONNECT TIME		PASSAGE TIME															
PMT QUEUE DELAY																	

DETECTOR NUMBER		51															
ECPI TYPE		VEH DETECTOR PLAN #															
TS2 DETECTOR		ECPI LOG															
DETECTOR	PHASE	1	2	3	4	5	6	7	8	9	10	11	12	13	14	15	16
CALL OPTION		DELAY TIME															
EXTEND OPTIONS	PASSAGE	EXTENSION TIME															
	QUEUE	QUEUE LIMIT															
	TIME																
USE ADDED INITIAL		CROSS SWITCH PHASE															
LOCK IN		NTCIP VOL OCC.															
DISCONNECT TIME		PASSAGE TIME															
PMT QUEUE DELAY																	

DETECTOR NUMBER		55															
ECPI TYPE		VEH DETECTOR PLAN #															
TS2 DETECTOR		ECPI LOG															
DETECTOR	PHASE	1	2	3	4	5	6	7	8	9	10	11	12	13	14	15	16
CALL OPTION		DELAY TIME															
EXTEND OPTIONS	PASSAGE	EXTENSION TIME															
	QUEUE	QUEUE LIMIT															
	TIME																
USE ADDED INITIAL		CROSS SWITCH PHASE															
LOCK IN		NTCIP VOL OCC.															
DISCONNECT TIME		PASSAGE TIME															
PMT QUEUE DELAY																	

DETECTOR NUMBER		52															
ECPI TYPE		VEH DETECTOR PLAN #															
TS2 DETECTOR		ECPI LOG															
DETECTOR	PHASE	1	2	3	4	5	6	7	8	9	10	11	12	13	14	15	16
CALL OPTION		DELAY TIME															
EXTEND OPTIONS	PASSAGE	EXTENSION TIME															
	QUEUE	QUEUE LIMIT															
	TIME																
USE ADDED INITIAL		CROSS SWITCH PHASE															
LOCK IN		NTCIP VOL OCC.															
DISCONNECT TIME		PASSAGE TIME															
PMT QUEUE DELAY																	

DETECTOR NUMBER		56															
ECPI TYPE		VEH DETECTOR PLAN #															
TS2 DETECTOR		ECPI LOG															
DETECTOR	PHASE	1	2	3	4	5	6	7	8	9	10	11	12	13	14	15	16
CALL OPTION		DELAY TIME															
EXTEND OPTIONS	PASSAGE	EXTENSION TIME															
	QUEUE	QUEUE LIMIT															
	TIME																
USE ADDED INITIAL		CROSS SWITCH PHASE															
LOCK IN		NTCIP VOL OCC.															
DISCONNECT TIME		PASSAGE TIME															
PMT QUEUE DELAY																	

DETECTOR TYPES: N - NTCIP S - STANDARD P - PASSAGE TYPE Q / STOP BAR R - RED EXTENSION
B - BIKE C - CALLING D - DISCONNECT G - GREEN EXTENTION / DELAY

TYPE Q / STOP BAR

ASC/3
PROGRAM REFERENCE CARD

INTERSECTION: HAWTHORNE BL @ IMPERIAL HWY Date Prepared: 10-9-14 SDD By: MLC

T.S. No.: 1456 **DETECTOR SUBMENU** Date Implemented: _____ By: _____

6-2. VEHICLE DETECTOR SETUP

DETECTOR NUMBER		57																	
ECPI TYPE																VEH DETECTOR PLAN #			
TS2 DETECTOR																ECPI LOG			
DETECTOR	PHASE	1	2	3	4	5	6	7	8	9	10	11	12	13	14	15	16		
CALL OPTION																DELAY TIME			
EXTEND OPTIONS	PASSAGE															EXTENSION TIME			
	QUEUE															QUEUE LIMIT			
	TIME																		
USE ADDED INITIAL																CROSS SWITCH PHASE			
LOCK IN																NTCIP VOL		OCC.	
DISCONNECT TIME																PASSAGE TIME			
PMT QUEUE DELAY																			

DETECTOR NUMBER		61																	
ECPI TYPE																VEH DETECTOR PLAN #			
TS2 DETECTOR																ECPI LOG			
DETECTOR	PHASE	1	2	3	4	5	6	7	8	9	10	11	12	13	14	15	16		
CALL OPTION																DELAY TIME			
EXTEND OPTIONS	PASSAGE															EXTENSION TIME			
	QUEUE															QUEUE LIMIT			
	TIME																		
USE ADDED INITIAL																CROSS SWITCH PHASE			
LOCK IN																NTCIP VOL		OCC.	
DISCONNECT TIME																PASSAGE TIME			
PMT QUEUE DELAY																			

DETECTOR NUMBER		58																	
ECPI TYPE																VEH DETECTOR PLAN #			
TS2 DETECTOR																ECPI LOG			
DETECTOR	PHASE	1	2	3	4	5	6	7	8	9	10	11	12	13	14	15	16		
CALL OPTION																DELAY TIME			
EXTEND OPTIONS	PASSAGE															EXTENSION TIME			
	QUEUE															QUEUE LIMIT			
	TIME																		
USE ADDED INITIAL																CROSS SWITCH PHASE			
LOCK IN																NTCIP VOL		OCC.	
DISCONNECT TIME																PASSAGE TIME			
PMT QUEUE DELAY																			

DETECTOR NUMBER		62																	
ECPI TYPE																VEH DETECTOR PLAN #			
TS2 DETECTOR																ECPI LOG			
DETECTOR	PHASE	1	2	3	4	5	6	7	8	9	10	11	12	13	14	15	16		
CALL OPTION																DELAY TIME			
EXTEND OPTIONS	PASSAGE															EXTENSION TIME			
	QUEUE															QUEUE LIMIT			
	TIME																		
USE ADDED INITIAL																CROSS SWITCH PHASE			
LOCK IN																NTCIP VOL		OCC.	
DISCONNECT TIME																PASSAGE TIME			
PMT QUEUE DELAY																			

DETECTOR NUMBER		59																	
ECPI TYPE																VEH DETECTOR PLAN #			
TS2 DETECTOR																ECPI LOG			
DETECTOR	PHASE	1	2	3	4	5	6	7	8	9	10	11	12	13	14	15	16		
CALL OPTION																DELAY TIME			
EXTEND OPTIONS	PASSAGE															EXTENSION TIME			
	QUEUE															QUEUE LIMIT			
	TIME																		
USE ADDED INITIAL																CROSS SWITCH PHASE			
LOCK IN																NTCIP VOL		OCC.	
DISCONNECT TIME																PASSAGE TIME			
PMT QUEUE DELAY																			

DETECTOR NUMBER		63																	
ECPI TYPE																VEH DETECTOR PLAN #			
TS2 DETECTOR																ECPI LOG			
DETECTOR	PHASE	1	2	3	4	5	6	7	8	9	10	11	12	13	14	15	16		
CALL OPTION																DELAY TIME			
EXTEND OPTIONS	PASSAGE															EXTENSION TIME			
	QUEUE															QUEUE LIMIT			
	TIME																		
USE ADDED INITIAL																CROSS SWITCH PHASE			
LOCK IN																NTCIP VOL		OCC.	
DISCONNECT TIME																PASSAGE TIME			
PMT QUEUE DELAY																			

DETECTOR NUMBER		60																	
ECPI TYPE																VEH DETECTOR PLAN #			
TS2 DETECTOR																ECPI LOG			
DETECTOR	PHASE	1	2	3	4	5	6	7	8	9	10	11	12	13	14	15	16		
CALL OPTION																DELAY TIME			
EXTEND OPTIONS	PASSAGE															EXTENSION TIME			
	QUEUE															QUEUE LIMIT			
	TIME																		
USE ADDED INITIAL																CROSS SWITCH PHASE			
LOCK IN																NTCIP VOL		OCC.	
DISCONNECT TIME																PASSAGE TIME			
PMT QUEUE DELAY																			

DETECTOR NUMBER		64																	
ECPI TYPE																VEH DETECTOR PLAN #			
TS2 DETECTOR																ECPI LOG			
DETECTOR	PHASE	1	2	3	4	5	6	7	8	9	10	11	12	13	14	15	16		
CALL OPTION																DELAY TIME			
EXTEND OPTIONS	PASSAGE															EXTENSION TIME			
	QUEUE															QUEUE LIMIT			
	TIME																		
USE ADDED INITIAL																CROSS SWITCH PHASE			
LOCK IN																NTCIP VOL		OCC.	
DISCONNECT TIME																PASSAGE TIME			
PMT QUEUE DELAY																			

DETECTOR TYPES: N - NTCIP S - STANDARD P - PASSAGE TYPE Q / STOP BAR R - RED EXTENSION
B - BIKE C - CALLING D - DISCONNECT G - GREEN EXTENTION / DELAY

TYPE Q / STOP BAR

PROGRAM REFERENCE CARD

INTERSECTION: HAWTHORNE BL @ IMPERIAL HWY Date Prepared: 10-9-14 SDD By: ML

T.S. No.: 1456 Date Implemented: _____ By: _____

DETECTOR SUBMENU

6-6. PEDESTRIAN DETECTOR DIAGNOSTICS

PEDESTRIAN DIAGNOSTIC PLAN NUMBER				1
DETECTOR	COUNTS	ACT	PRES	MULTIPLIER
1				
2				
3				
4				
5				
6				
7				
8				
9				
10				
11				
12				
13				
14				
15				
16				

PEDESTRIAN DIAGNOSTIC PLAN NUMBER				3
DETECTOR	COUNTS	ACT	PRES	MULTIPLIER
1				
2				
3				
4				
5				
6				
7				
8				
9				
10				
11				
12				
13				
14				
15				
16				

PEDESTRIAN DIAGNOSTIC PLAN NUMBER				2
DETECTOR	COUNTS	ACT	PRES	MULTIPLIER
1				
2				
3				
4				
5				
6				
7				
8				
9				
10				
11				
12				
13				
14				
15				
16				

PEDESTRIAN DIAGNOSTIC PLAN NUMBER				4
DETECTOR	COUNTS	ACT	PRES	MULTIPLIER
1				
2				
3				
4				
5				
6				
7				
8				
9				
10				
11				
12				
13				
14				
15				
16				

PROGRAM REFERENCE CARD

INTERSECTION: HAWTHORNE BL @ IMPERIAL HWY Date Prepared: 10-9-14 SLD By: MC
T.S. No.: 1456 Date Implemented: _____ By: _____

DETECTOR ASSIGNMENT SUMMARY WORKSHEET
(INFORMATION ONLY WORKSHEET)

APPR	LANE(S)	DESCRIPTION	DESIGNATION	DETECTOR NUMBER	DETECTOR TYPE	ASSIGNED PHASE(S)	DELAY TIME	EXTEND TIME	QUEUE LIMIT TIME
S	1	AD	1-S-Φ2	1	S	2		2.0	
S	2	AD	2-S-Φ2	2	S	2		2.0	
W	1	AD	1-W-Φ4	3	S	4		2.0	
W	2	AD	2-W-Φ4	4	S	4		2.0	
N	1	AD	1-N-Φ6	5	S	6		2.0	
N	2	AD	2-N-Φ6	6	S	6		2.0	
E	1	AD	1-E-Φ8	7	S	8		2.0	
E	2	AD	2-E-Φ8	8	S	8		2.0	
N	3	AD	3-N-Φ6	9	S	6		2.0	
S	3	AD	3-S-Φ2	10	S	2		2.0	
E	3	AD	3-E-Φ8	11	S	8		2.0	
W	3	AD	3-W-Φ4	12	S	4		2.0	
				13					
				14					
				15					
				16					
S	LT-1	F.V, 6'X50'*	1-S-Φ5	17	S	5			
S	LT-2	F.V, 6'X50'*	2-S-Φ5	18	S	5			
S	1	F.V, 6'X25'*	4-S-Φ2	19	S	2			
S	2	F.V, 6'X25'*	5-S-Φ2	20	S	2			
S	3	F.V, 6'X25'*	6-S-Φ2	21	S	2			
S	RT	F.V, 6'X25'*	7-S-Φ2	22	S	2	10.0	1.0	
W	LT	F.V, 6'X50'*	1-W-Φ7	23	S	7			
W	1	F.V, 6'X25'*	4-W-Φ4	24	S	4			
W	2	F.V, 6'X25'*	5-W-Φ4	25	S	4			
W	3	F.V, 6'X25'*	6-W-Φ4	26	S	4			
N	LT	F.V 6'X50'*	1-N-Φ1	27	S	1			
N	1	F.V, 6'X25'*	4-N-Φ6	28	S	6			
N	2	F.V, 6'X25'*	5-N-Φ6	29	S	6			
N	3	F.V, 6'X25'*	6-N-Φ6	30	S	6			
E	LT	F.V, 6'X50'*	1-E-Φ3	31	S	3			
E	1	F.V, 6'X25'*	4-E-Φ8	32	S	8			

COMMENTS: * VIDEO DETECTION

PROGRAM REFERENCE CARD

INTERSECTION: HAWTHORNE BL @ IMPERIAL HWY Date Prepared: 10-9-14 SDD By: ML

T.S. No.: 1456 Date Implemented: _____ By: _____

DETECTOR ASSIGNMENT SUMMARY WORKSHEET
 (INFORMATION ONLY WORKSHEET)

APPR	LANE(S)	DESCRIPTION	DESIGNATION	DETECTOR NUMBER	DETECTOR TYPE	ASSIGNED PHASE(S)	DELAY TIME	EXTEND TIME	QUEUE LIMIT TIME
E	2	F.V, 6'X25'*	5-E-Φ8	33	S	8			
E	3	F.V, 6'X25'*	6-E-Φ8	34	S	8			
				35					
				36					
				37					
				38					
				39					
				40					
				41					
				42					
				43					
				44					
				45					
				46					
				47					
				48					
				49					
				50					
				51					
				52					
				53					
				54					
				55					
				56					
				57					
				58					
				59					
				60					
				61					
				62					
				63					
				64					

COMMENTS: * VIDEO DETECTION