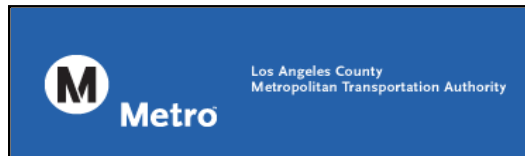


LOS ANGELES COUNTY
METROPOLITAN TRANSPORTATION AUTHORITY

Photo Enforcement Services



Blue Line Monthly Report



December 2010



Prepared by: ACS Transportation Solutions
Confidential

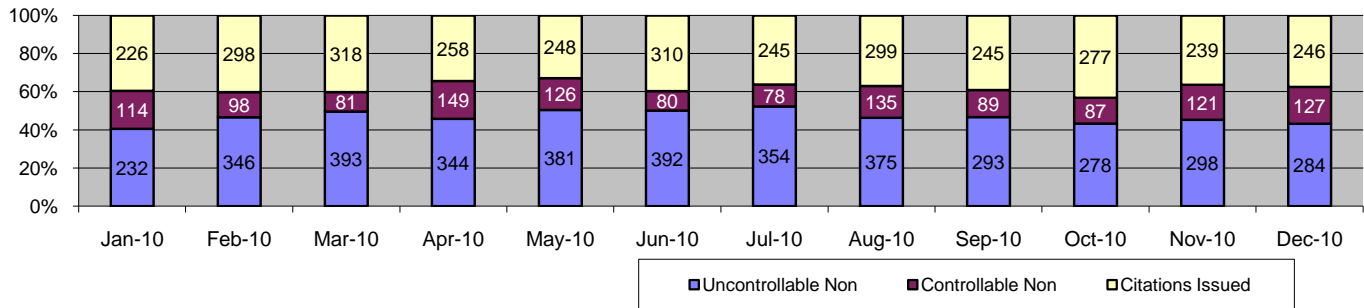
Table of Contents

Report Title	Page
<i>Approach Summary Report, All Locations</i>	3
<i>Approach Summary Report, Location 322, WB 20th Street @ Long Beach Boulevard</i>	4
<i>Approach Summary Report, Location 421, EB Vernon Avenue @ Long Beach Boulevard</i>	5
<i>Approach Summary Report, Location 821, EB Century Blvd. @ Grandee Avenue</i>	6
<i>Approach Summary Report, Location 822, WB Century Blvd. @ Grandee Avenue</i>	7
<i>Approach Summary Report, Location 841, EB 103rd Street @ Grandee Avenue</i>	8
<i>Approach Summary Report, Location 981, EB 119th Street @ Willowbrook Boulevard</i>	9
<i>Approach Summary Report, Location 982, WB 119th Street @ Willowbrook Boulevard</i>	10
<i>Approach Summary Report, Location 1051, EB 130th Street @ Willowbrook Boulevard</i>	11
<i>Approach Summary Report, Location 1052, WB 130th Street @ Willowbrook Boulevard</i>	12
<i>Approach Summary Report, Location 1081, EB Stockwell Street @ Willowbrook Boulevard</i>	13
<i>Approach Summary Report, Location 1082, WB Stockwell Street @ Willowbrook Boulevard</i>	14
<i>Approach Summary Report, Location 2003, EB Washington Boulevard @ Los Angeles Street</i>	15
<i>Approach Summary Report, Location 2008, WB Washington Boulevard @ Los Angeles Street</i>	16
<i>Approach Summary Report, Location 2017, EB Washington Boulevard @ San Pedro Street</i>	17
<i>Approach Summary Report, Location 2018, WB Washington Boulevard @ San Pedro Street</i>	18
<i>Approach Summary Report, Location 2027, EB Washington Boulevard @ Broadway Street</i>	19
<i>Approach Summary Report, Location 2036, SB Flower Street @ 18th Street</i>	20
<i>Approach Summary Report, Location 2046, SB Flower Street to EB 10 Freeway On Ramp</i>	21
<i>Approach Summary Report, Location 2054, WB Venice @ Flower</i>	22
<i>Approach Summary Report, Location 2056, SB Venice @ Flower</i>	23
<i>Customer Service Report</i>	24
<i>Daily Citation Yield Report</i>	25
<i>Citations by Time (Graph)</i>	26
<i>Average Red Light Seconds (Graph)</i>	27
<i>Average Speed (Graph)</i>	28
<i>Monthly Citation Yield Report</i>	29
<i>Disposition Summary Report</i>	30
<i>Performance Report</i>	31



A XEROX Company

Los Angeles County MTA Blue Line Approach Summary Report All Locations



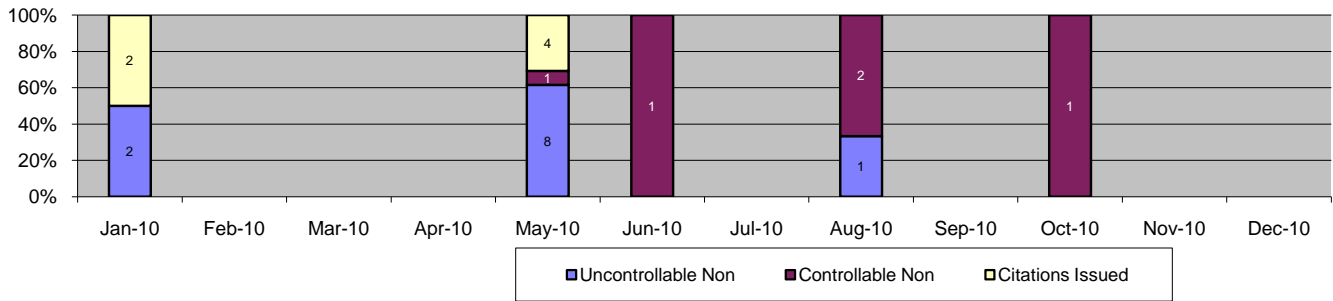
Events	Dec-10		3 Month Average		Year to Date Total		Year to Date Average		2009 Average	
	Quantity	% of Events	Quantity	% of Events	Quantity	% of Events	Quantity	% of Events	Quantity	% of Events
Non Violations	2,130	76%	2,079	76%	29,535	78%	2,461	78%	3,729	84%
Violations	657	24%	642	24%	8,464	22%	705	22%	726	16%
Total Events	2,787	100%	2,720	100%	37,961	100%	3,163	100%	4,451	100%
<i>Violations</i>	<i>Quantity</i>	<i>% of Viol</i>	<i>Quantity</i>	<i>% of Viol</i>	<i>Quantity</i>	<i>% of Viol</i>	<i>Quantity</i>	<i>% of Viol</i>	<i>Quantity</i>	<i>% of Viol</i>
Uncont. Non-Issued Viol	284	43%	290	45%	3,970	47%	331	47%	300	41%
Cont. Non-Issued Viol	127	19%	100	16%	1,285	15%	107	15%	157	22%
Citations	246	37%	254	39%	3,209	38%	267	38%	269	37%
Daily Av. Vehicle Counts	65,979		76,075		989,186		82,432		92,694	
Av. Violation Speed	17.4		16.8		16.7		16.7		16.7	
Av. Issued Speed	17.2		17.2		16.8		16.8		17.2	
Av. Violation Seconds	13.6		15.7		14.7		14.7		17.6	
Av. Issued Seconds	7.8		7.6		9.1		9.1		8.5	
Cal. Days/Enforc. Days	31	28	30	28	365	353	30	29	31	29
Daily Citation Yield	7.94	8.82	8.36	9.12	8.79	9.09	8.79	9.09	8.79	9.17
Cit /Viol. Iss. Rate	37%		39%		38%		38%		37%	
Controllable Iss. Rate	66%		72%		71%		71%		63%	
<i>Non - Violations</i>	<i>Quantity</i>	<i>% Non-Viol</i>	<i>Quantity</i>	<i>% Non-Viol</i>	<i>Quantity</i>	<i>% Non-Viol</i>	<i>Quantity</i>	<i>% Non-Viol</i>	<i>Quantity</i>	<i>% Non-Viol</i>
Rear Axle Violation	1	0%	3	0%	38	0%	3	0%	4	0%
Gate Down - No Train	44	2%	8	0%	186	1%	16	1%	4	0%
Train Activation	2	0%	10	0%	122	0%	10	0%	61	2%
Right Turn	0	0%	0	0%	0	0%	0	0%	0	0%
No Violation Occurred	2,083	98%	2,058	99%	29,189	99%	2,432	99%	3,661	98%
Total Non Violations	2130	100%	2079	100%	29,535	100%	2461	100%	3729	100%
<i>Uncontrollable Non-Iss</i>	<i>Quantity</i>	<i>% of Un.Non</i>	<i>Quantity</i>	<i>% of Un.Non</i>	<i>Quantity</i>	<i>% of Un.Non</i>	<i>Quantity</i>	<i>% of Un.Non</i>	<i>Quantity</i>	<i>% of Un.Non</i>
No Plate	53	19%	47	16%	711	18%	59	18%	57	19%
Out of State Plate	5	2%	9	3%	100	3%	8	3%	8	3%
Glare on Plate	4	1%	3	1%	38	1%	3	1%	2	1%
Illegible Plate	1	0%	0	0%	43	1%	4	1%	4	1%
Plate Obstructed	15	5%	10	3%	125	3%	10	3%	14	5%
Windshield Glare	33	12%	39	14%	728	18%	61	18%	48	16%
Driver Obstructed	12	4%	20	7%	283	7%	24	7%	22	7%
Car Obstructed	55	19%	66	23%	803	20%	67	20%	54	18%
Emergency Vehicle	14	5%	20	7%	231	6%	19	6%	22	7%
No DMV Match Found	68	24%	52	18%	723	18%	60	18%	55	18%
LASD Expired	0	0%	5	2%	103	3%	9	3%	12	4%
Other	24	8%	18	6%	82	2%	7	2%	2	1%
Total	284	100%	290	100%	3,970	100%	331	100%	300	100%
<i>Controllable Non-Iss</i>	<i>Quantity</i>	<i>% Cont. Non</i>	<i>Quantity</i>	<i>% Cont. Non</i>	<i>Quantity</i>	<i>% Cont. Non</i>	<i>Quantity</i>	<i>% Cont. Non</i>	<i>Quantity</i>	<i>% Cont. Non</i>
Framing of Plate	9	7%	8	8%	116	9%	10	9%	7	4%
Focus / Clarity of Plate	7	6%	3	3%	44	3%	4	3%	4	3%
Dark Interior	15	12%	18	18%	157	12%	13	12%	6	4%
Framing of Driver	3	2%	3	3%	55	4%	5	4%	5	3%
Focus / Clarity of Driver	3	2%	1	1%	28	2%	2	2%	1	1%
Framing of Car	22	17%	21	21%	260	20%	22	20%	24	15%
Data Error	1	1%	0	0%	25	2%	2	2%	0	0%
Exposure	34	27%	5	5%	67	5%	6	5%	3	2%
Equipment Malfunction	7	6%	13	13%	67	5%	6	5%	99	63%
LASD Return	25	20%	28	28%	459	36%	38	36%	6	4%
ACS Expired	1	1%	0	0%	7	1%	1	1%	1	0%
Total	127	100%	100	100%	1285	100%	107	100%	157	100%



A XEROX Company

Los Angeles County MTA Blue Line Approach Summary Report

Location 322: WB 20th St. @ Long Beach Blvd



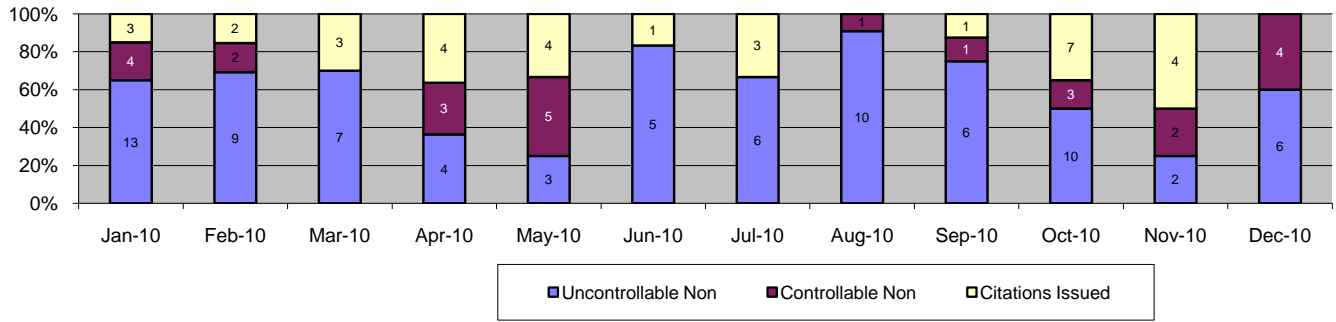
Events	Dec-10		3 Month Average		Year to Date Total		Year to Date Average		2009 Average	
	Quantity	% of Events	Quantity	% of Events	Quantity	% of Events	Quantity	% of Events	Quantity	% of Events
Non Violations	0	0%	1	67%	16	42%	1	42%	2	44%
Violations	0	0%	0	0%	22	58%	2	58%	2	56%
Total Events	0	0%	1	67%	38	100%	3	100%	4	100%
Violations	Quantity	% of Viol	Quantity	% of Viol	Quantity	% of Viol	Quantity	% of Viol	Quantity	% of Viol
Uncont. Non-Issued Viol	0	0%	0	0%	11	29%	1	29%	1	24%
Cont. Non-Issued Viol	0	0%	0	33%	5	13%	0	13%	1	24%
Citations	0	0%	0	0%	6	16%	1	16%	0	8%
Daily Av. Vehicle Counts	932		754		12,226		1,019		1,350	
Av. Violation Speed	0.0		2.0		4.1		4.1		9.1	
Av. Issued Speed	0.0		0.0		1.8		1.8		3.1	
Av. Violation Sec.	0.0		33.3		31.0		31.0		47.4	
Av. Issued Sec.	0.0		0.0		11.5		11.5		28.5	
Cal. Days/Enforc. Days	31	31	30	20	365	335	30	28	31	26
Daily Citation Yield	0.00	0.00	0.00	0.00	0.02	0.02	0.02	0.02	0.01	0.01
Cit /Viol. Iss. Rate		0%		0%		27%		27%		14%
Controllable Iss. Rate		0%		0%		55%		55%		25%
Non - Violations	Dec-09		3 Month Average		Year to Date Total		Year to Date Average		Jan-09	
	Quantity	% Non-Viol	Quantity	% Non-Viol	Quantity	% Non-Viol	Quantity	% Non-Viol	Quantity	% Non-Viol
Rear Axle Violation	0	0%	1	100%	5	31%	0	31%	0	18%
Gate Down - No Train	0	0%	0	0%	6	38%	1	38%	0	0%
Train Activation	0	0%	0	0%	1	6%	0	6%	0	0%
Right Turn	0	0%	0	0%	0	0%	0	0%	0	0%
No Violation Occurred	0	0%	0	0%	4	25%	0	25%	1	82%
Total Non Violations	0	100%	1	100%	16	100%	1	100%	2	100%
Uncontrollable Non-Iss	Quantity	% of Un.Non	Quantity	% of Un.Non	Quantity	% of Un.Non	Quantity	% of Un.Non	Quantity	% of Un.Non
No Plate	0	0%	0	0%	1	9%	0	9%	0	17%
Out of State Plate	0	0%	0	0%	1	9%	0	9%	0	0%
Glare on Plate	0	0%	0	0%	1	9%	0	9%	0	17%
Illegible Plate	0	0%	0	0%	0	0%	0	0%	0	0%
Plate Obstructed	0	0%	0	0%	1	9%	0	9%	0	0%
Windshield Glare	0	0%	0	0%	1	9%	0	9%	0	33%
Driver Obstructed	0	0%	0	0%	0	0%	0	0%	0	0%
Car Obstructed	0	0%	0	0%	1	9%	0	9%	0	0%
Emergency Vehicle	0	0%	0	0%	0	0%	0	0%	0	0%
No DMV Match Found	0	0%	0	0%	5	45%	0	45%	0	33%
LASD Expired	0	0%	0	0%	0	0%	0	0%	0	0%
Other	0	0%	0	0%	0	0%	0	0%	0	0%
Total	0	100%	0	100%	11	100%	1	100%	1	100%
Controllable Non-Iss	Quantity	% Cont. Non	Quantity	% Cont. Non	Quantity	% Cont. Non	Quantity	% Cont. Non	Quantity	% Cont. Non
Framing of Plate	0	0%	0	100%	1	20%	0	20%	0	33%
Focus / Clarity of Plate	0	0%	0	0%	1	20%	0	20%	1	67%
Dark Interior	0	0%	0	0%	0	0%	0	0%	0	0%
Framing of Driver	0	0%	0	0%	1	20%	0	20%	0	0%
Focus / Clarity of Driver	0	0%	0	0%	1	20%	0	20%	0	0%
Framing of Car	0	0%	0	0%	0	0%	0	0%	0	0%
Data Error	0	0%	0	0%	0	0%	0	0%	0	0%
Exposure	0	0%	0	0%	0	0%	0	0%	0	0%
Equipment Malfunction	0	0%	0	0%	1	20%	0	20%	0	0%
LASD Return	0	0%	0	0%	0	0%	0	0%	0	0%
ACS Expired	0	0%	0	0%	0	0%	0	0%	0	0%
Total	0	100%	0	100%	5	100%	0	100%	1	100%



A Xerox Company

Los Angeles County MTA Blue Line Approach Summary Report

Location 421: EB Vernon Avenue @ Long Beach Boulevard



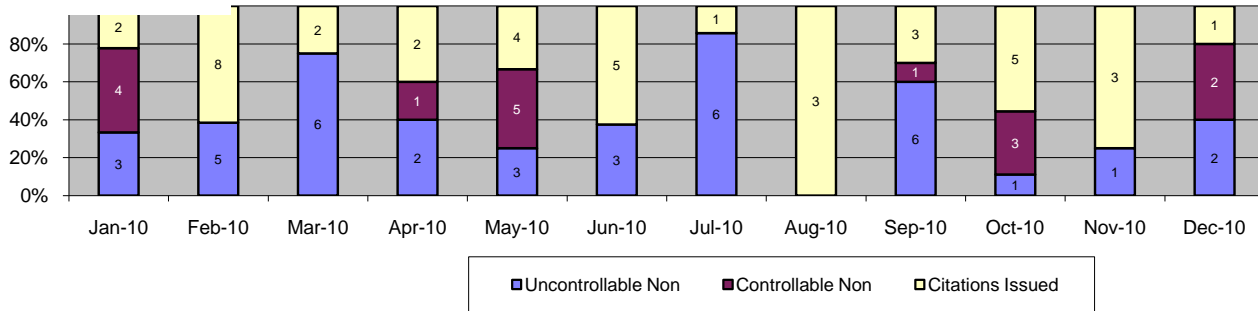
Events	Dec-10		3 Month Average		Year to Date Total		Year to Date Average		2009 Average	
	Quantity	% of Events	Quantity	% of Events	Quantity	% of Events	Quantity	% of Events	Quantity	% of Events
Non Violations	2	17%	6	26%	45	25%	4	25%	2	14%
Violations	10	83%	12	74%	138	75%	12	75%	7	86%
Total Events	12	100%	18	100%	183	100%	15	100%	9	100%
Violations	Quantity	% of Viol	Quantity	% of Viol	Quantity	% of Viol	Quantity	% of Viol	Quantity	% of Viol
Uncont. Non-Issued Viol	6	50%	6	33%	81	44%	7	44%	4	46%
Cont. Non-Issued Viol	4	33%	2	11%	25	14%	2	14%	1	15%
Citations	0	0%	4	22%	32	17%	3	17%	2	18%
Daily Av. Vehicle Counts	11,331		11,293		150,538		12,545		12,625	
Av. Violation Speed	13.6		15.0		13.9		13.9		16.5	
Av. Issued Speed	0.0		16.1		11.1		11.1		12.8	
Av. Violation Sec.	25.5		11.0		18.3		18.3		18.6	
Av. Issued Sec.	0.0		7.5		16.1		16.1		16.9	
Cal. Days/Enforc. Days	31	31	30	30	365	365	30	30	31	31
Daily Citation Yield	0.00	0.00	0.13	0.13	0.09	0.09	0.09	0.09	0.06	0.06
Cit /Viol. Iss. Rate	0%		33%		23%		23%		23%	
Controllable Iss. Rate	0%		67%		56%		56%		55%	
Non - Violations	Quantity	% Non-Viol	Quantity	% Non-Viol	Quantity	% Non-Viol	Quantity	% Non-Viol	Quantity	% Non-Viol
Rear Axle Violation	0	0%	0	0%	3	7%	0	7%	1	31%
Gate Down - No Train	0	0%	3	42%	19	42%	2	42%	0	0%
Train Activation	0	0%	0	0%	0	0%	0	0%	0	0%
Right Turn	0	0%	0	0%	0	0%	0	0%	0	0%
No Violation Occurred	2	100%	4	58%	23	51%	2	51%	1	69%
Total Non Violations	2	100%	6	100%	45	100%	4	100%	2	100%
Uncontrollable Non-Iss	Quantity	% of Un.Non	Quantity	% of Un.Non	Quantity	% of Un.Non	Quantity	% of Un.Non	Quantity	% of Un.Non
No Plate	2	33%	1	17%	11	14%	1	14%	0	10%
Out of State Plate	0	0%	0	0%	0	0%	0	0%	0	3%
Glare on Plate	0	0%	0	0%	1	1%	0	1%	0	0%
Illegible Plate	0	0%	0	0%	3	4%	0	4%	0	3%
Plate Obstructed	1	17%	0	0%	9	11%	1	11%	1	23%
Windshield Glare	1	17%	1	11%	19	23%	2	23%	1	17%
Driver Obstructed	0	0%	0	0%	2	2%	0	2%	0	0%
Car Obstructed	1	17%	3	44%	16	20%	1	20%	1	13%
Emergency Vehicle	0	0%	0	6%	3	4%	0	4%	0	3%
No DMV Match Found	1	17%	1	22%	17	21%	1	21%	1	27%
LASD Expired	0	0%	0	0%	0	0%	0	0%	0	0%
Other	0	0%	0	0%	0	0%	0	0%	0	0%
Total	6	100%	6	100%	81	100%	7	100%	4	100%
Controllable Non-Iss	Quantity	% Cont. Non	Quantity	% Cont. Non	Quantity	% Cont. Non	Quantity	% Cont. Non	Quantity	% Cont. Non
Framing of Plate	1	25%	0	0%	3	12%	0	12%	0	0%
Focus / Clarity of Plate	0	0%	0	0%	3	12%	0	12%	0	30%
Dark Interior	0	0%	0	17%	3	12%	0	12%	1	50%
Framing of Driver	0	0%	0	0%	0	0%	0	0%	0	0%
Focus / Clarity of Driver	1	25%	0	0%	4	16%	0	16%	0	0%
Framing of Car	0	0%	1	33%	6	24%	1	24%	0	10%
Data Error	0	0%	0	0%	0	0%	0	0%	0	0%
Exposure	0	0%	0	0%	0	0%	0	0%	0	0%
Equipment Malfunction	2	50%	1	33%	4	16%	0	16%	0	10%
LASD Return	0	0%	0	0%	1	4%	0	4%	0	0%
ACS Expired	0	0%	0	17%	1	4%	0	4%	0	0%
Total	4	100%	2	100%	25	100%	2	100%	1	100%



A Xerox Company

Los Angeles County MTA Blue Line Approach Summary Report

Location 821: EB Century Boulevard @ Grandee Avenue



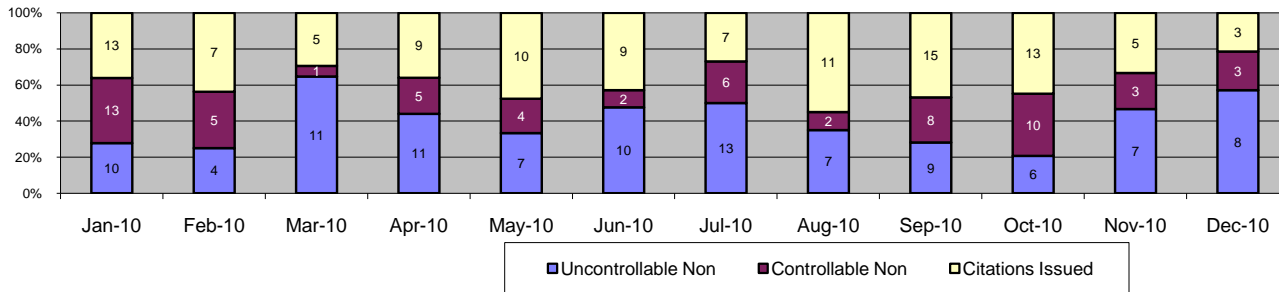
Events	Dec-10		3 Month Average		Year to Date Total		Year to Date Average		2009 Average	
	Quantity	% of Events	Quantity	% of Events	Quantity	% of Events	Quantity	% of Events	Quantity	% of Events
Non Violations	4	44%	2	28%	48	34%	4	34%	4	20%
Violations	5	56%	8	72%	93	66%	8	66%	8	80%
Total Events	9	100%	10	100%	141	100%	12	100%	12	100%
Violations	Quantity	% of Viol	Quantity	% of Viol	Quantity	% of Viol	Quantity	% of Viol	Quantity	% of Viol
Uncont. Non-Issued Viol	2	22%	3	28%	38	27%	3	27%	3	25%
Cont. Non-Issued Viol	2	22%	1	14%	16	11%	1	11%	1	7%
Citations	1	11%	4	38%	39	28%	3	28%	4	34%
Daily Av. Vehicle Counts	7,170		9,953		114,116		9,510		9,647	
Av. Violation Speed	17.0		14.7		15.5		15.5		14.7	
Av. Issued Speed	22.0		13.1		13.7		13.7		14.5	
Av. Violation Sec.	8.5		7.9		11.2		11.2		17.2	
Av. Issued Sec.	7.5		8.1		7.8		7.8		12.3	
Cal. Days/Enforc. Days	31	31	30	30	365	365	30	30	31	31
Daily Citation Yield	0.03	0.03	0.12	0.12	0.11	0.11	0.11	0.11	0.14	0.14
Cit /Viol. Iss. Rate	20%		48%		42%		42%		52%	
Controllable Iss. Rate	33%		73%		71%		71%		83%	
Non - Violations	Quantity	% Non-Viol	Quantity	% Non-Viol	Quantity	% Non-Viol	Quantity	% Non-Viol	Quantity	% Non-Viol
Rear Axle Violation	0	0%	0	0%	1	2%	0	2%	0	7%
Gate Down - No Train	0	0%	1	67%	19	40%	2	40%	1	17%
Train Activation	0	0%	0	0%	0	0%	0	0%	0	0%
Right Turn	0	0%	0	0%	0	0%	0	0%	0	0%
No Violation Occurred	4	100%	1	33%	28	58%	2	58%	3	76%
Total Non Violations	4	100%	2	100%	48	100%	4	100%	4	100%
Uncontrollable Non-Iss	Quantity	% of Un.Non	Quantity	% of Un.Non	Quantity	% of Un.Non	Quantity	% of Un.Non	Quantity	% of Un.Non
No Plate	0	0%	1	25%	6	16%	1	16%	0	14%
Out of State Plate	0	0%	0	0%	1	3%	0	3%	0	0%
Glare on Plate	0	0%	0	0%	0	0%	0	0%	0	0%
Illegible Plate	0	0%	0	0%	2	5%	0	5%	0	10%
Plate Obstructed	0	0%	0	0%	0	0%	0	0%	0	0%
Windshield Glare	0	0%	1	38%	13	34%	1	34%	1	38%
Driver Obstructed	0	0%	0	0%	0	0%	0	0%	0	0%
Car Obstructed	0	0%	0	0%	0	0%	0	0%	0	0%
Emergency Vehicle	0	0%	0	0%	2	5%	0	5%	0	5%
No DMV Match Found	2	100%	1	38%	14	37%	1	37%	0	10%
LASD Expired	0	0%	0	0%	0	0%	0	0%	1	24%
Other	0	0%	0	0%	0	0%	0	0%	0	0%
Total	2	100%	3	100%	38	100%	3	100%	3	100%
Controllable Non-Iss	Quantity	% Cont. Non	Quantity	% Cont. Non	Quantity	% Cont. Non	Quantity	% Cont. Non	Quantity	% Cont. Non
Framing of Plate	0	0%	0	0%	1	6%	0	6%	0	0%
Focus / Clarity of Plate	0	0%	0	0%	0	0%	0	0%	0	0%
Dark Interior	0	0%	1	50%	4	25%	0	25%	0	0%
Framing of Driver	0	0%	0	0%	0	0%	0	0%	0	0%
Focus / Clarity of Driver	0	0%	0	0%	1	6%	0	6%	0	0%
Framing of Car	0	0%	0	0%	5	31%	0	31%	1	83%
Data Error	0	0%	0	0%	0	0%	0	0%	0	0%
Exposure	0	0%	0	0%	0	0%	0	0%	0	0%
Equipment Malfunction	0	0%	0	0%	0	0%	0	0%	0	0%
LASD Return	2	100%	1	50%	5	31%	0	31%	0	17%
ACS Expired	0	0%	0	0%	0	0%	0	0%	0	0%
Total	2	100%	1	100%	16	100%	1	100%	1	100%



A XEROX Company

Los Angeles County MTA Blue Line Approach Summary Report

Location 822: WB Century Boulevard @ Grandee Avenue



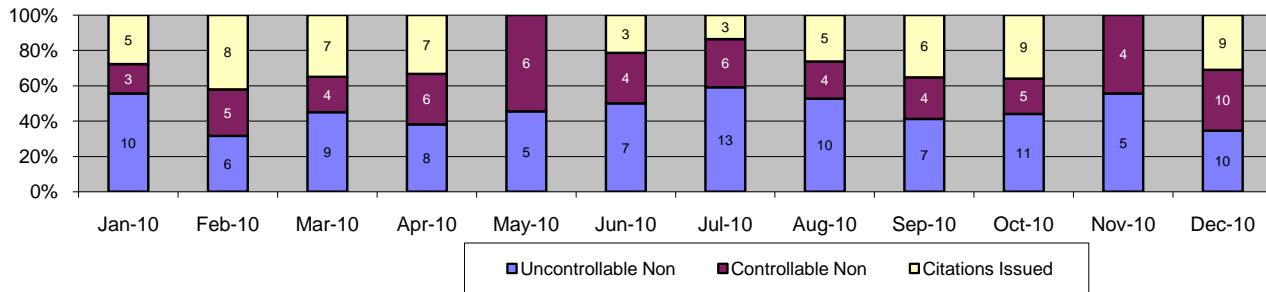
Events	Dec-10		3 Month Average		Year to Date Total		Year to Date Average		2009 Average	
	Quantity	% of Events	Quantity	% of Events	Quantity	% of Events	Quantity	% of Events	Quantity	% of Events
Non Violations	2	13%	1	8%	32	11%	3	11%	1	6%
Violations	14	88%	25	92%	272	89%	23	89%	12	48%
Total Events	16	100%	27	100%	304	100%	25	100%	14	54%
<i>Violations</i>	<i>Quantity</i>	<i>% of Viol</i>	<i>Quantity</i>	<i>% of Viol</i>	<i>Quantity</i>	<i>% of Viol</i>	<i>Quantity</i>	<i>% of Viol</i>	<i>Quantity</i>	<i>% of Viol</i>
Uncont. Non-Issued Viol	8	50%	7	28%	103	34%	9	34%	5	39%
Cont. Non-Issued Viol	3	19%	7	26%	62	20%	5	20%	3	21%
Citations	3	19%	11	41%	107	35%	9	35%	4	29%
Daily Av. Vehicle Counts	6,977		10,178		118,447		9,871		16,348	
Av. Violation Speed	12.1		16.7		16.7		16.7		18.5	
Av. Issued Speed	10.3		18.4		17.6		17.6		17.3	
Av. Violation Sec.	7.6		9.7		9.5		9.5		10.0	
Av. Issued Sec.	7.3		7.6		8.9		8.9		10.8	
Cal. Days/Enforc. Days	31	31	30	30	365	365	30	30	31	17
Daily Citation Yield	0.10	0.10	0.36	0.36	0.29	0.29	0.29	0.29	0.13	0.23
Cit /Viol. Iss. Rate	88%		43%		39%		39%		33%	
Controllable Iss. Rate	84%		61%		63%		63%		58%	
<i>Non - Violations</i>	<i>Quantity</i>	<i>% Non-Viol</i>	<i>Quantity</i>	<i>% Non-Viol</i>	<i>Quantity</i>	<i>% Non-Viol</i>	<i>Quantity</i>	<i>% Non-Viol</i>	<i>Quantity</i>	<i>% Non-Viol</i>
Rear Axle Violation	0	0%	0	0%	0	0%	0	0%	0	0%
Gate Down - No Train	0	0%	1	100%	20	63%	2	63%	0	0%
Train Activation	0	0%	0	0%	0	0%	0	0%	0	0%
Right Turn	0	0%	0	0%	0	0%	0	0%	0	0%
No Violation Occurred	2	100%	0	0%	12	38%	1	38%	1	100%
Total Non Violations	2	100%	1	100%	32	100%	3	100%	1	100%
<i>Uncontrollable Non-Iss</i>	<i>Quantity</i>	<i>% of Un.Non</i>	<i>Quantity</i>	<i>% of Un.Non</i>	<i>Quantity</i>	<i>% of Un.Non</i>	<i>Quantity</i>	<i>% of Un.Non</i>	<i>Quantity</i>	<i>% of Un.Non</i>
No Plate	0	0%	1	18%	12	12%	1	12%	1	24%
Out of State Plate	0	0%	0	5%	2	2%	0	2%	0	0%
Glare on Plate	0	0%	0	0%	3	3%	0	3%	0	0%
Illegible Plate	0	0%	0	0%	1	1%	0	1%	0	0%
Plate Obstructed	0	0%	0	5%	4	4%	0	4%	0	0%
Windshield Glare	3	38%	2	27%	36	35%	3	35%	2	32%
Driver Obstructed	1	13%	1	9%	6	6%	1	6%	0	3%
Car Obstructed	1	13%	0	0%	6	6%	1	6%	0	5%
Emergency Vehicle	0	0%	0	0%	4	4%	0	4%	0	3%
No DMV Match Found	3	38%	3	36%	27	26%	2	26%	1	22%
LASD Expired	0	0%	0	0%	2	2%	0	2%	1	11%
Other	0	0%	0	0%	0	0%	0	0%	0	0%
Total	8	100%	7	100%	103	100%	9	100%	5	100%
<i>Controllable Non-Iss</i>	<i>Quantity</i>	<i>% Cont. Non</i>	<i>Quantity</i>	<i>% Cont. Non</i>	<i>Quantity</i>	<i>% Cont. Non</i>	<i>Quantity</i>	<i>% Cont. Non</i>	<i>Quantity</i>	<i>% Cont. Non</i>
Framing of Plate	1	33%	0	0%	3	5%	0	5%	0	0%
Focus / Clarity of Plate	0	0%	0	0%	2	3%	0	3%	0	0%
Dark Interior	0	0%	3	48%	15	24%	1	24%	1	35%
Framing of Driver	0	0%	0	0%	2	3%	0	3%	0	5%
Focus / Clarity of Driver	0	0%	0	0%	1	2%	0	2%	0	0%
Framing of Car	2	67%	3	48%	31	50%	3	50%	1	35%
Data Error	0	0%	0	0%	0	0%	0	0%	0	0%
Exposure	0	0%	0	0%	2	3%	0	3%	0	0%
Equipment Malfunction	0	0%	0	0%	4	6%	0	6%	0	10%
LASD Return	0	0%	0	5%	2	3%	0	3%	0	0%
ACS Expired	0	0%	0	0%	0	0%	0	0%	0	15%
Total	3	100%	7	100%	62	100%	5	100%	3	100%



A Xerox Company

Los Angeles County MTA Blue Line Approach Summary Report

Location 841: EB 103rd Street @ Grandee Avenue



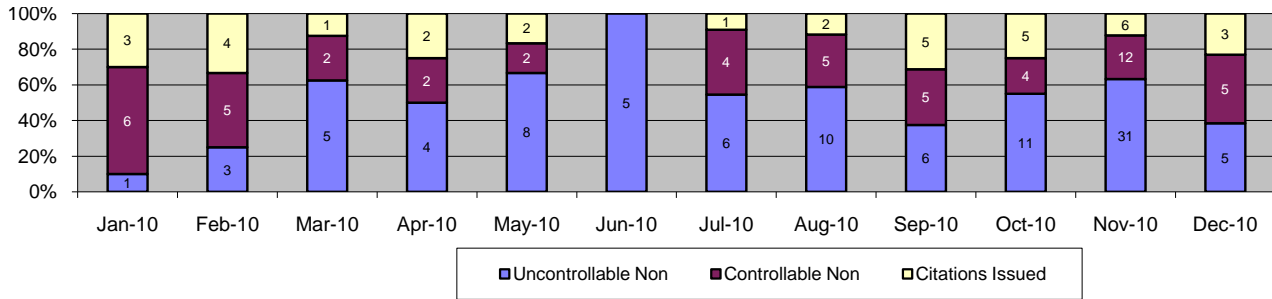
Events	Dec-10		3 Month Average		Year to Date Total		Year to Date Average		2009 Average	
	Quantity	% of Events	Quantity	% of Events	Quantity	% of Events	Quantity	% of Events	Quantity	% of Events
Non Violations	9	24%	1	19%	43	16%	4	16%	4	15%
Violations	29	76%	17	81%	224	84%	19	84%	15	85%
Total Events	38	100%	18	100%	267	100%	22	100%	19	100%
Violations	Quantity	% of Viol	Quantity	% of Viol	Quantity	% of Viol	Quantity	% of Viol	Quantity	% of Viol
Uncont. Non-Issued Viol	10	26%	8	43%	101	38%	8	38%	5	28%
Cont. Non-Issued Viol	10	26%	4	25%	61	23%	5	23%	3	16%
Citations	9	24%	5	28%	62	23%	5	23%	7	35%
Daily Av. Vehicle Counts	9,138		9,311		123,982		10,332		9,766	
Av. Violation Speed	13.4		13.5		14.1		14.1		14.6	
Av. Issued Speed	14.8		9.5		13.4		13.4		15.3	
Av. Violation Sec.	6.5		9.0		9.7		9.7		9.6	
Av. Issued Sec.	6.2		9.6		11.0		11.0		9.8	
Cal. Days/Enforc. Days	31	31	30	30	365	365	30	30	31	31
Daily Citation Yield	0.29	0.29	0.16	0.16	0.17	0.17	0.17	0.17	0.21	0.21
Cit /Viol. Iss. Rate	31%		29%		28%		28%		44%	
Controllable Iss. Rate	47%		54%		50%		50%		69%	
Non - Violations	Quantity	% Non-Viol	Quantity	% Non-Viol	Quantity	% Non-Viol	Quantity	% Non-Viol	Quantity	% Non-Viol
Rear Axle Violation	0	0%	0	0%	0	0%	0	0%	0	0%
Gate Down - No Train	8	89%	0	0%	32	74%	3	74%	0	0%
Train Activation	0	0%	0	0%	0	0%	0	0%	0	0%
Right Turn	0	0%	0	0%	0	0%	0	0%	0	0%
No Violation Occurred	1	11%	1	100%	11	26%	1	26%	4	100%
Total Non Violations	9	100%	1	100%	43	100%	4	100%	4	100%
Uncontrollable Non-Iss	Quantity	% of Un.Non	Quantity	% of Un.Non	Quantity	% of Un.Non	Quantity	% of Un.Non	Quantity	% of Un.Non
No Plate	1	10%	1	17%	15	15%	1	15%	1	14%
Out of State Plate	0	0%	0	4%	1	1%	0	1%	0	3%
Glare on Plate	3	30%	2	22%	19	19%	2	19%	0	8%
Illegible Plate	0	0%	0	0%	6	6%	1	6%	1	11%
Plate Obstructed	2	20%	1	13%	11	11%	1	11%	0	5%
Windshield Glare	1	10%	1	13%	18	18%	2	18%	1	24%
Driver Obstructed	1	10%	0	0%	4	4%	0	4%	0	3%
Car Obstructed	0	0%	0	4%	3	3%	0	3%	0	5%
Emergency Vehicle	0	0%	0	4%	3	3%	0	3%	0	8%
No DMV Match Found	2	20%	2	22%	19	19%	2	19%	1	14%
LASD Expired	0	0%	0	0%	2	2%	0	2%	0	5%
Other	0	0%	0	0%	0	0%	0	0%	0	0%
Total	10	100%	8	100%	101	100%	8	100%	5	100%
Controllable Non-Iss	Quantity	% Cont. Non	Quantity	% Cont. Non	Quantity	% Cont. Non	Quantity	% Cont. Non	Quantity	% Cont. Non
Framing of Plate	3	30%	1	31%	18	30%	2	30%	1	29%
Focus / Clarity of Plate	6	60%	1	31%	23	38%	2	38%	1	38%
Dark Interior	0	0%	0	0%	2	3%	0	3%	0	0%
Framing of Driver	0	0%	0	8%	2	3%	0	3%	0	0%
Focus / Clarity of Driver	0	0%	0	0%	0	0%	0	0%	0	5%
Framing of Car	1	10%	1	31%	13	21%	1	21%	1	19%
Data Error	0	0%	0	0%	0	0%	0	0%	0	0%
Exposure	0	0%	0	0%	1	2%	0	2%	0	0%
Equipment Malfunction	0	0%	0	0%	0	0%	0	0%	0	10%
LASD Return	0	0%	0	0%	2	3%	0	3%	0	0%
ACS Expired	0	0%	0	0%	0	0%	0	0%	0	0%
Total	10	100%	4	100%	61	100%	5	100%	3	100%



A Xerox Company

Los Angeles County MTA Blue Line Approach Summary Report

Location 981: EB 119th Street @ Willowbrook Boulevard



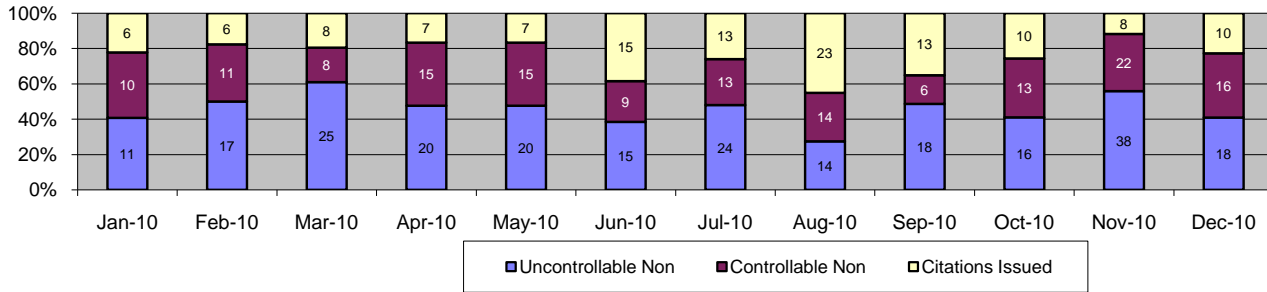
Events	Dec-10		3 Month Average		Year to Date Total		Year to Date Average		2009 Average	
	Quantity	% of Events	Quantity	% of Events	Quantity	% of Events	Quantity	% of Events	Quantity	% of Events
Non Violations	12	48%	3	12%	34	16%	3	16%	1	7%
Violations	13	52%	28	88%	181	84%	15	84%	8	93%
Total Events	25	100%	31	100%	215	100%	18	100%	9	100%
Violations	Quantity	% of Viol	Quantity	% of Viol	Quantity	% of Viol	Quantity	% of Viol	Quantity	% of Viol
Uncont. Non-Issued Viol	5	20%	16	52%	95	44%	8	44%	3	39%
Cont. Non-Issued Viol	5	20%	7	23%	52	24%	4	24%	2	27%
Citations	3	12%	5	17%	34	16%	3	16%	2	24%
Daily Av. Vehicle Counts	5,428		6,094		74,941		6,245		6,380	
Av. Violation Speed	12.5		12.0		12.6		12.6		11.9	
Av. Issued Speed	19.0		12.7		11.8		11.8		10.9	
Av. Violation Sec.	40.4		45.5		36.3		36.3		34.4	
Av. Issued Sec.	8.9		25.9		12.4		12.4		24.0	
Cal. Days/Enforc. Days	31	31	30	30	365	365	30	30	31	31
Daily Citation Yield	0.10	0.10	0.18	0.18	0.09	0.09	0.09	0.09	0.07	0.07
Cit /Viol. Iss. Rate	23%		19%		19%		19%		27%	
Controllable Iss. Rate	38%		43%		40%		40%		47%	
Non - Violations	Quantity	% Non-Viol	Quantity	% Non-Viol	Quantity	% Non-Viol	Quantity	% Non-Viol	Quantity	% Non-Viol
Rear Axle Violation	0	0%	0	13%	1	3%	0	3%	0	0%
Gate Down - No Train	6	50%	1	38%	16	47%	1	47%	0	0%
Train Activation	0	0%	0	0%	0	0%	0	0%	0	0%
Right Turn	0	0%	0	0%	0	0%	0	0%	0	0%
No Violation Occurred	6	50%	1	50%	17	50%	1	50%	1	100%
Total Non Violations	12	100%	3	100%	34	100%	3	100%	1	100%
Uncontrollable Non-Iss	Quantity	% of Un.Non	Quantity	% of Un.Non	Quantity	% of Un.Non	Quantity	% of Un.Non	Quantity	% of Un.Non
No Plate	2	40%	1	6%	13	14%	1	14%	0	13%
Out of State Plate	0	0%	0	0%	1	1%	0	1%	0	4%
Glare on Plate	0	0%	0	0%	0	0%	0	0%	0	0%
Illegible Plate	0	0%	0	0%	0	0%	0	0%	0	0%
Plate Obstructed	0	0%	0	2%	1	1%	0	1%	0	0%
Windshield Glare	1	20%	1	8%	28	29%	2	29%	2	46%
Driver Obstructed	0	0%	0	2%	3	3%	0	3%	0	4%
Car Obstructed	0	0%	1	6%	4	4%	0	4%	0	0%
Emergency Vehicle	2	40%	2	15%	14	15%	1	15%	0	13%
No DMV Match Found	0	0%	1	6%	5	5%	0	5%	0	13%
LASD Expired	0	0%	0	0%	0	0%	0	0%	0	8%
Other	0	0%	9	54%	26	27%	2	27%	0	0%
Total	5	100%	16	100%	95	100%	8	100%	3	100%
Controllable Non-Iss	Quantity	% Cont. Non	Quantity	% Cont. Non	Quantity	% Cont. Non	Quantity	% Cont. Non	Quantity	% Cont. Non
Framing of Plate	0	0%	0	0%	1	2%	0	2%	0	6%
Focus / Clarity of Plate	0	0%	0	0%	0	0%	0	0%	0	6%
Dark Interior	2	40%	3	38%	19	37%	2	37%	0	18%
Framing of Driver	0	0%	0	0%	2	4%	0	4%	0	0%
Focus / Clarity of Driver	0	0%	1	10%	3	6%	0	6%	0	0%
Framing of Car	2	40%	3	38%	23	44%	2	44%	2	65%
Data Error	0	0%	0	0%	0	0%	0	0%	0	0%
Exposure	0	0%	0	0%	0	0%	0	0%	0	0%
Equipment Malfunction	0	0%	0	0%	0	0%	0	0%	0	0%
LASD Return	1	20%	1	14%	4	8%	0	8%	0	6%
ACS Expired	0	0%	0	0%	0	0%	0	0%	0	0%
Total	5	100%	7	100%	52	100%	4	100%	2	100%



A Xerox Company

Los Angeles County MTA Blue Line Approach Summary Report

Location 982: WB 119th Street @ Willowbrook Boulevard



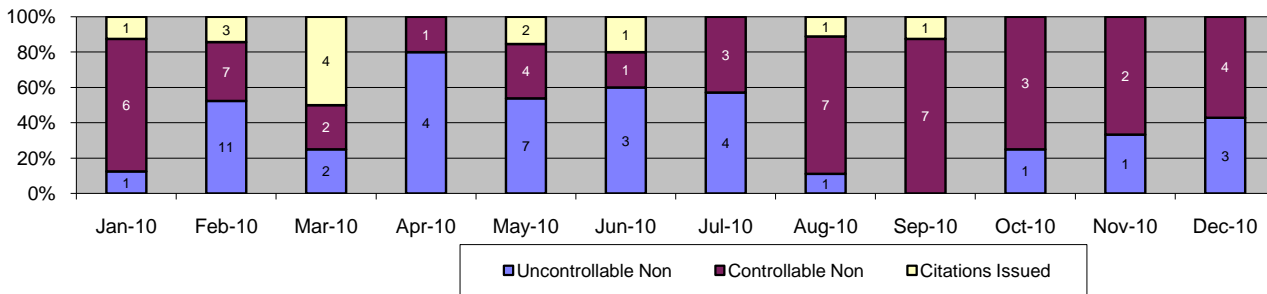
Events	Dec-10		3 Month Average		Year to Date Total		Year to Date Average		2009 Average	
	Quantity	% of Events	Quantity	% of Events	Quantity	% of Events	Quantity	% of Events	Quantity	% of Events
Non Violations	29	40%	19	24%	182	26%	15	26%	8	30%
Violations	44	60%	48	76%	514	74%	43	74%	32	70%
Total Events	73	100%	67	100%	696	100%	58	100%	40	100%
Violations	Quantity	% of Viol	Quantity	% of Viol	Quantity	% of Viol	Quantity	% of Viol	Quantity	% of Viol
Uncont. Non-Issued Viol	18	25%	24	36%	236	34%	20	34%	14	34%
Cont. Non-Issued Viol	16	22%	14	20%	152	22%	13	22%	8	19%
Citations	10	14%	10	15%	126	18%	11	18%	11	27%
Daily Av. Vehicle Counts	5,658		6,243		76,286		6,357		6,322	
Av. Violation Speed	9.4		9.6		9.5		9.5		9.8	
Av. Issued Speed	11.1		10.4		10.5		10.5		10.9	
Av. Violation Sec.	14.6		31.5		16.6		16.6		10.9	
Av. Issued Sec.	6.8		9.4		9.4		9.4		9.2	
Cal. Days/Enforc. Days	31	31	30	30	365	365	30	30	31	31
Daily Citation Yield	0.32	0.32	0.34	0.34	0.35	0.35	0.35	0.35	0.36	0.36
Cit /Viol. Iss. Rate	23%		22%		25%		25%		34%	
Controllable Iss. Rate	38%		43%		45%		45%		59%	
Non - Violations	Quantity	% Non-Viol	Quantity	% Non-Viol	Quantity	% Non-Viol	Quantity	% Non-Viol	Quantity	% Non-Viol
Rear Axle Violation	0	0%	0	2%	2	1%	0	1%	0	2%
Gate Down - No Train	7	24%	1	7%	23	13%	2	13%	0	3%
Train Activation	2	7%	9	47%	79	43%	7	43%	4	46%
Right Turn	0	0%	0	0%	0	0%	0	0%	0	0%
No Violation Occurred	20	69%	8	44%	78	43%	7	43%	4	49%
Total Non Violations	29	100%	19	100%	182	100%	15	100%	8	100%
Uncontrollable Non-Iss	Quantity	% of Un.Non	Quantity	% of Un.Non	Quantity	% of Un.Non	Quantity	% of Un.Non	Quantity	% of Un.Non
No Plate	3	17%	2	8%	34	14%	3	14%	4	26%
Out of State Plate	0	0%	0	1%	2	1%	0	1%	0	1%
Glare on Plate	0	0%	0	0%	2	1%	0	1%	0	0%
Illegible Plate	0	0%	0	0%	2	1%	0	1%	0	2%
Plate Obstructed	4	22%	2	7%	18	8%	2	8%	1	8%
Windshield Glare	3	17%	6	24%	101	43%	8	43%	3	25%
Driver Obstructed	0	0%	0	1%	2	1%	0	1%	1	5%
Car Obstructed	0	0%	1	3%	4	2%	0	2%	0	2%
Emergency Vehicle	1	6%	2	8%	12	5%	1	5%	1	4%
No DMV Match Found	7	39%	2	7%	30	13%	3	13%	3	22%
LASD Expired	0	0%	0	1%	1	0%	0	0%	0	3%
Other	0	0%	9	39%	28	12%	2	12%	0	0%
Total	18	100%	24	100%	236	100%	20	100%	14	100%
Controllable Non-Iss	Quantity	% Cont. Non	Quantity	% Cont. Non	Quantity	% Cont. Non	Quantity	% Cont. Non	Quantity	% Cont. Non
Framing of Plate	1	6%	3	20%	30	20%	3	20%	1	8%
Focus / Clarity of Plate	0	0%	1	5%	2	1%	0	1%	0	4%
Dark Interior	4	25%	2	17%	27	18%	2	18%	0	6%
Framing of Driver	1	6%	1	5%	6	4%	1	4%	0	4%
Focus / Clarity of Driver	2	13%	0	0%	4	3%	0	3%	0	2%
Framing of Car	6	38%	5	37%	71	47%	6	47%	6	75%
Data Error	0	0%	0	0%	0	0%	0	0%	0	0%
Exposure	0	0%	0	2%	1	1%	0	1%	0	0%
Equipment Malfunction	1	6%	0	2%	3	2%	0	2%	0	2%
LASD Return	1	6%	2	12%	8	5%	1	5%	0	0%
ACS Expired	0	0%	0	0%	0	0%	0	0%	0	0%
Total	16	100%	14	100%	152	100%	13	100%	8	100%



A XEROX Company

Los Angeles County MTA Blue Line Approach Summary Report

Location 1051: EB 130th Street @ Willowbrook Boulevard



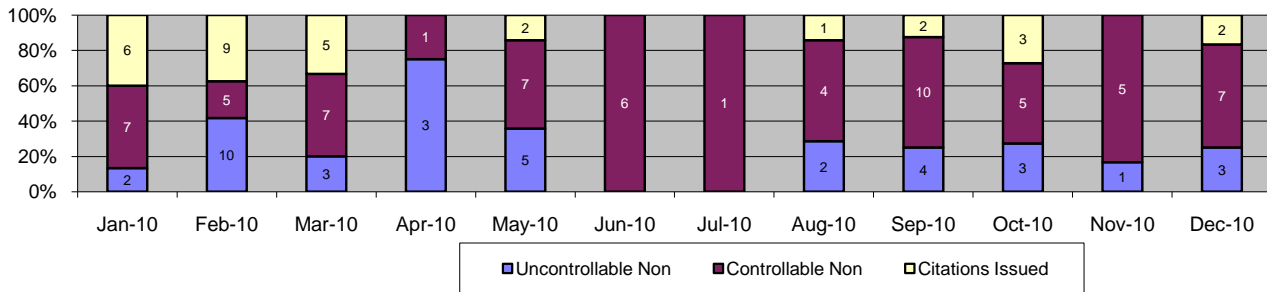
Events	Dec-10		3 Month Average		Year to Date Total		Year to Date Average		2009 Average	
	Quantity	% of Events	Quantity	% of Events	Quantity	% of Events	Quantity	% of Events	Quantity	% of Events
Non Violations	5	42%	1	2%	12	11%	1	11%	0	2%
Violations	7	58%	5	98%	98	89%	8	89%	7	98%
Total Events	12	100%	6	100%	110	100%	9	100%	8	100%
Violations	Quantity	% of Viol	Quantity	% of Viol	Quantity	% of Viol	Quantity	% of Viol	Quantity	% of Viol
Uncont. Non-Issued Viol	3	25%	1	12%	38	35%	3	35%	3	35%
Cont. Non-Issued Viol	4	33%	4	71%	47	43%	4	43%	3	41%
Citations	0	0%	0	6%	13	12%	1	12%	2	20%
Daily Av. Vehicle Counts	2,054		2,173		36,628		3,052		2,345	
Av. Violation Speed	11.9		11.0		12.6		12.6		14.0	
Av. Issued Speed	0.0		5.0		8.5		8.5		11.3	
Av. Violation Sec.	19.8		10.2		13.5		13.5		13.4	
Av. Issued Sec.	0.0		1.9		3.6		3.6		11.4	
Cal. Days/Enforc. Days	31	31	30	30	365	340	30	28	31	31
Daily Citation Yield	0.00	0.00	0.01	0.01	0.04	0.04	0.04	0.04	0.05	0.05
Cit /Viol. Iss. Rate	0%		7%		13%		13%		21%	
Controllable Iss. Rate	0%		8%		22%		22%		33%	
Non - Violations	Quantity	% Non-Viol	Quantity	% Non-Viol	Quantity	% Non-Viol	Quantity	% Non-Viol	Quantity	% Non-Viol
Rear Axle Violation	0	0%	0	0%	0	0%	0	0%	0	0%
Gate Down - No Train	3	60%	0	50%	9	75%	1	75%	0	0%
Train Activation	0	0%	0	0%	0	0%	0	0%	0	0%
Right Turn	0	0%	0	0%	0	0%	0	0%	0	0%
No Violation Occurred	2	40%	0	50%	3	25%	0	25%	0	100%
Total Non Violations	5	100%	1	100%	12	100%	1	100%	0	100%
Uncontrollable Non-Iss	Quantity	% of Un.Non	Quantity	% of Un.Non	Quantity	% of Un.Non	Quantity	% of Un.Non	Quantity	% of Un.Non
No Plate	0	0%	0	0%	3	8%	0	8%	1	26%
Out of State Plate	0	0%	0	0%	0	0%	0	0%	0	0%
Glare on Plate	0	0%	0	0%	0	0%	0	0%	0	0%
Illegible Plate	0	0%	0	0%	0	0%	0	0%	0	0%
Plate Obstructed	0	0%	0	0%	0	0%	0	0%	0	0%
Windshield Glare	2	67%	1	100%	26	68%	2	68%	1	42%
Driver Obstructed	0	0%	0	0%	0	0%	0	0%	0	0%
Car Obstructed	0	0%	0	0%	2	5%	0	5%	0	0%
Emergency Vehicle	0	0%	0	0%	3	8%	0	8%	0	16%
No DMV Match Found	1	33%	0	0%	4	11%	0	11%	0	11%
LASD Expired	0	0%	0	0%	0	0%	0	0%	0	5%
Other	0	0%	0	0%	0	0%	0	0%	0	0%
Total	3	100%	1	100%	38	100%	3	100%	3	100%
Controllable Non-Iss	Quantity	% Cont. Non	Quantity	% Cont. Non	Quantity	% Cont. Non	Quantity	% Cont. Non	Quantity	% Cont. Non
Framing of Plate	0	0%	0	0%	3	6%	0	6%	0	5%
Focus / Clarity of Plate	0	0%	0	0%	0	0%	0	0%	0	0%
Dark Interior	1	25%	2	58%	19	40%	2	40%	1	32%
Framing of Driver	1	25%	0	0%	2	4%	0	4%	0	5%
Focus / Clarity of Driver	0	0%	0	0%	0	0%	0	0%	0	0%
Framing of Car	2	50%	2	42%	22	47%	2	47%	2	59%
Data Error	0	0%	0	0%	0	0%	0	0%	0	0%
Exposure	0	0%	0	0%	0	0%	0	0%	0	0%
Equipment Malfunction	0	0%	0	0%	0	0%	0	0%	0	0%
LASD Return	0	0%	0	0%	1	2%	0	2%	0	0%
ACS Expired	0	0%	0	0%	0	0%	0	0%	0	0%
Total	4	100%	4	100%	47	100%	4	100%	3	100%



A Xerox Company

Los Angeles County MTA Blue Line Approach Summary Report

Location 1052: WB 130th Street @ Willowbrook Blvd.



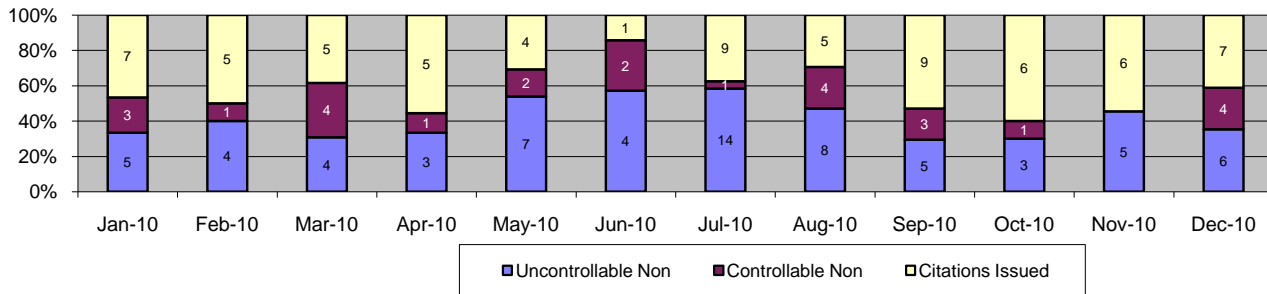
Events	Dec-10		3 Month Average		Year to Date Total		Year to Date Average		2009 Average	
	Quantity	% of Events	Quantity	% of Events	Quantity	% of Events	Quantity	% of Events	Quantity	% of Events
Non Violations	4	25%	0	3%	14	10%	1	10%	34	8%
Violations	12	75%	11	97%	131	90%	11	90%	12	92%
Total Events	16	100%	11	100%	145	100%	12	100%	46	100%
<i>Violations</i>	<i>Quantity</i>	<i>% of Viol</i>	<i>Quantity</i>	<i>% of Viol</i>	<i>Quantity</i>	<i>% of Viol</i>	<i>Quantity</i>	<i>% of Viol</i>	<i>Quantity</i>	<i>% of Viol</i>
Uncont. Non-Issued Viol	3	19%	3	24%	36	25%	3	25%	3	6%
Cont. Non-Issued Viol	7	44%	7	61%	65	45%	5	45%	7	16%
Citations	2	13%	2	15%	30	21%	3	21%	2	4%
Daily Av. Vehicle Counts	1,724		2,086		25,409		2,117		3,521	
Av. Violation Speed	9.8		10.7		9.8		9.8		11.3	
Av. Issued Speed	10.5		9.2		8.8		8.8		14.0	
Av. Violation Sec.	18.8		28.5		15.6		15.6		12.2	
Av. Issued Sec.	81.1		30.0		20.8		20.8		13.3	
Cal. Days/Enforc. Days	31	31	30	30	365	365	30	30	31	31
Daily Citation Yield	0.06	0.06	0.05	0.05	0.08	0.08	0.08	0.08	0.06	0.06
Cit /Viol. Iss. Rate	17%		15%		23%		23%		15%	
Controllable Iss. Rate	22%		20%		32%		32%		19%	
<i>Non - Violations</i>	<i>Quantity</i>	<i>% Non-Viol</i>	<i>Quantity</i>	<i>% Non-Viol</i>	<i>Quantity</i>	<i>% Non-Viol</i>	<i>Quantity</i>	<i>% Non-Viol</i>	<i>Quantity</i>	<i>% Non-Viol</i>
Rear Axle Violation	0	0%	0	0%	0	0%	0	0%	0	0%
Gate Down - No Train	4	100%	0	0%	8	57%	1	57%	3	8%
Train Activation	0	0%	0	0%	0	0%	0	0%	6	18%
Right Turn	0	0%	0	0%	0	0%	0	0%	0	0%
No Violation Occurred	0	0%	0	0%	6	43%	1	43%	25	74%
Total Non Violations	4	100%	0	100%	14	100%	1	100%	34	100%
<i>Uncontrollable Non-Iss</i>	<i>Quantity</i>	<i>% of Un.Non</i>	<i>Quantity</i>	<i>% of Un.Non</i>	<i>Quantity</i>	<i>% of Un.Non</i>	<i>Quantity</i>	<i>% of Un.Non</i>	<i>Quantity</i>	<i>% of Un.Non</i>
No Plate	1	33%	1	25%	7	19%	1	19%	0	16%
Out of State Plate	0	0%	0	0%	0	0%	0	0%	0	0%
Glare on Plate	0	0%	0	13%	1	3%	0	3%	0	0%
Illegible Plate	0	0%	0	0%	1	3%	0	3%	0	0%
Plate Obstructed	0	0%	0	0%	2	6%	0	6%	0	5%
Windshield Glare	1	33%	0	13%	13	36%	1	36%	1	21%
Driver Obstructed	0	0%	0	13%	1	3%	0	3%	0	0%
Car Obstructed	0	0%	0	0%	0	0%	0	0%	0	0%
Emergency Vehicle	0	0%	0	0%	2	6%	0	6%	0	0%
No DMV Match Found	1	33%	1	38%	9	25%	1	25%	0	11%
LASD Expired	0	0%	0	0%	0	0%	0	0%	0	5%
Other	0	0%	0	0%	0	0%	0	0%	1	42%
Total	3	100%	3	100%	36	100%	3	100%	3	100%
<i>Controllable Non-Iss</i>	<i>Quantity</i>	<i>% Cont. Non</i>	<i>Quantity</i>	<i>% Cont. Non</i>	<i>Quantity</i>	<i>% Cont. Non</i>	<i>Quantity</i>	<i>% Cont. Non</i>	<i>Quantity</i>	<i>% Cont. Non</i>
Framing of Plate	0	0%	1	20%	11	17%	1	17%	1	10%
Focus / Clarity of Plate	0	0%	0	0%	3	5%	0	5%	1	8%
Dark Interior	2	29%	0	0%	2	3%	0	3%	0	2%
Framing of Driver	0	0%	1	10%	3	5%	0	5%	0	4%
Focus / Clarity of Driver	0	0%	0	5%	1	2%	0	2%	0	2%
Framing of Car	5	71%	4	55%	43	66%	4	66%	5	73%
Data Error	0	0%	0	0%	0	0%	0	0%	0	0%
Exposure	0	0%	0	0%	0	0%	0	0%	0	0%
Equipment Malfunction	0	0%	1	10%	2	3%	0	3%	0	2%
LASD Return	0	0%	0	0%	0	0%	0	0%	0	0%
ACS Expired	0	0%	0	0%	0	0%	0	0%	0	0%
Total	7	100%	7	100%	65	100%	5	100%	7	100%



A Xerox Company

Los Angeles County MTA Blue Line Approach Summary Report

Location 1081: EB Stockwell Street @ Willowbrook Boulevard



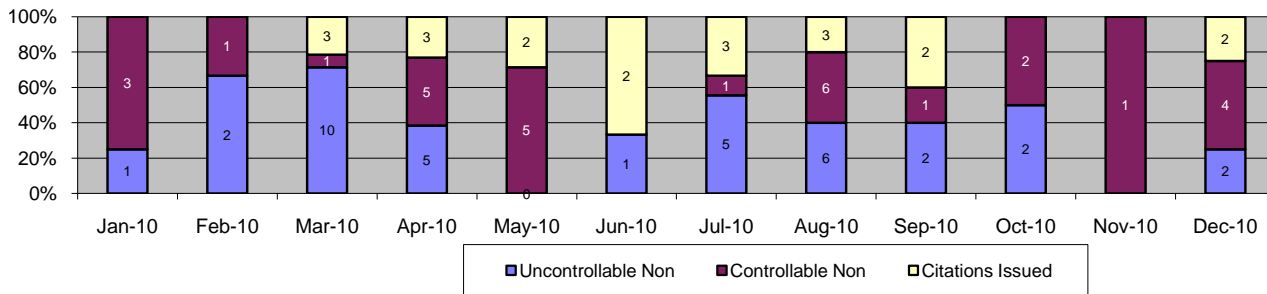
Events	Dec-10		3 Month Average		Year to Date Total		Year to Date Average		2009 Average	
	Quantity	% of Events	Quantity	% of Events	Quantity	% of Events	Quantity	% of Events	Quantity	% of Events
Non Violations	15	47%	7	35%	84	34%	7	34%	8	20%
Violations	17	53%	13	65%	163	66%	14	66%	65	81%
Total Events	32	100%	19	100%	247	100%	21	100%	73	100%
<i>Violations</i>	<i>Quantity</i>	<i>% of Viol</i>	<i>Quantity</i>	<i>% of Viol</i>	<i>Quantity</i>	<i>% of Viol</i>	<i>Quantity</i>	<i>% of Viol</i>	<i>Quantity</i>	<i>% of Viol</i>
Uncont. Non-Issued Viol	6	19%	4	22%	68	28%	6	28%	5	7%
Cont. Non-Issued Viol	4	13%	1	7%	26	11%	2	11%	54	74%
Citations	7	22%	7	36%	69	28%	6	28%	6	8%
Daily Av. Vehicle Counts	3,683		4,479		53,326		4,444		7,110	
Av. Violation Speed	12.2		11.3		11.6		11.6		12.7	
Av. Issued Speed	13.6		11.5		12.2		12.2		13.6	
Av. Violation Sec.	17.9		14.1		13.6		13.6		21.0	
Av. Issued Sec.	6.8		15.4		12.1		12.1		19.4	
Cal. Days/Enforc. Days	31	31	30	30	365	365	30	30	31	31
Daily Citation Yield	0.23	0.23	0.23	0.23	0.19	0.19	0.19	0.19	0.19	0.19
Cit /Viol. Iss. Rate	41%		55%		42%		42%		9%	
Controllable Iss. Rate	64%		84%		73%		73%		10%	
<i>Non - Violations</i>	<i>Quantity</i>	<i>% Non-Viol</i>	<i>Quantity</i>	<i>% Non-Viol</i>	<i>Quantity</i>	<i>% Non-Viol</i>	<i>Quantity</i>	<i>% Non-Viol</i>	<i>Quantity</i>	<i>% Non-Viol</i>
Rear Axle Violation	0	0%	0	0%	0	0%	0	0%	0	0%
Gate Down - No Train	8	53%	0	0%	17	20%	1	20%	0	0%
Train Activation	0	0%	0	5%	2	2%	0	2%	1	8%
Right Turn	0	0%	0	0%	0	0%	0	0%	0	0%
No Violation Occurred	7	47%	6	95%	65	77%	5	77%	8	92%
Total Non Violations	15	100%	7	100%	84	100%	7	100%	8	100%
<i>Uncontrollable Non-Iss</i>	<i>Quantity</i>	<i>% of Un.Non</i>	<i>Quantity</i>	<i>% of Un.Non</i>	<i>Quantity</i>	<i>% of Un.Non</i>	<i>Quantity</i>	<i>% of Un.Non</i>	<i>Quantity</i>	<i>% of Un.Non</i>
No Plate	3	50%	2	38%	13	19%	1	19%	1	29%
Out of State Plate	0	0%	0	0%	1	1%	0	1%	0	0%
Glare on Plate	0	0%	0	0%	0	0%	0	0%	0	0%
Illegible Plate	0	0%	0	0%	1	1%	0	1%	0	0%
Plate Obstructed	0	0%	0	0%	1	1%	0	1%	0	9%
Windshield Glare	1	17%	1	23%	26	38%	2	38%	1	20%
Driver Obstructed	0	0%	0	8%	1	1%	0	1%	0	3%
Car Obstructed	0	0%	0	0%	2	3%	0	3%	0	0%
Emergency Vehicle	0	0%	0	8%	5	7%	0	7%	0	6%
No DMV Match Found	2	33%	1	15%	16	24%	1	24%	1	29%
LASD Expired	0	0%	0	8%	1	1%	0	1%	0	6%
Other	0	0%	0	0%	1	1%	0	1%	0	0%
Total	6	100%	4	100%	68	100%	6	100%	5	100%
<i>Controllable Non-Iss</i>	<i>Quantity</i>	<i>% Cont. Non</i>	<i>Quantity</i>	<i>% Cont. Non</i>	<i>Quantity</i>	<i>% Cont. Non</i>	<i>Quantity</i>	<i>% Cont. Non</i>	<i>Quantity</i>	<i>% Cont. Non</i>
Framing of Plate	0	0%	0	0%	1	4%	0	4%	0	0%
Focus / Clarity of Plate	0	0%	0	0%	0	0%	0	0%	0	0%
Dark Interior	0	0%	0	25%	2	8%	0	8%	0	1%
Framing of Driver	0	0%	0	0%	1	4%	0	4%	1	1%
Focus / Clarity of Driver	0	0%	0	25%	3	12%	0	12%	0	0%
Framing of Car	1	25%	1	50%	15	58%	1	58%	2	3%
Data Error	0	0%	0	0%	0	0%	0	0%	0	0%
Exposure	0	0%	0	0%	1	4%	0	4%	0	0%
Equipment Malfunction	2	50%	0	0%	2	8%	0	8%	51	94%
LASD Return	1	25%	0	0%	1	4%	0	4%	0	0%
ACS Expired	0	0%	0	0%	0	0%	0	0%	0	1%
Total	4	100%	1	100%	26	100%	2	100%	54	100%



A XEROX Company

Los Angeles County MTA Blue Line Approach Summary Report

Location 1082: WB Stockwell Street @ Willowbrook Boulevard



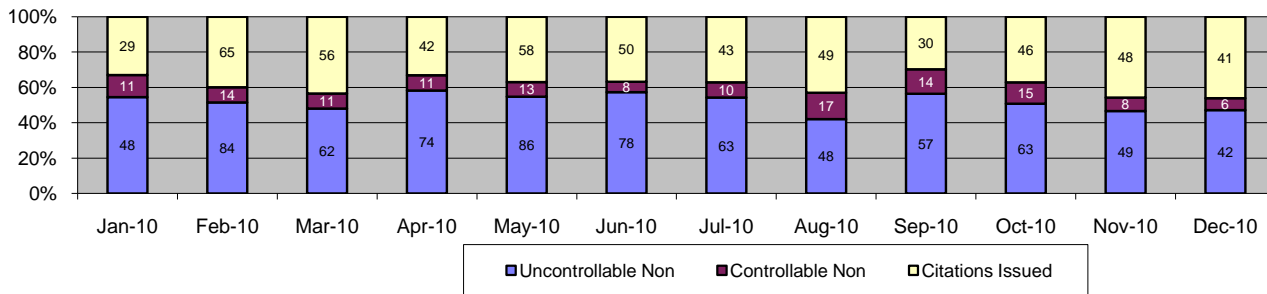
Events	Dec-10		3 Month Average		Year to Date Total		Year to Date Average		2007 Average	
	Quantity	% of Events	Quantity	% of Events	Quantity	% of Events	Quantity	% of Events	Quantity	% of Events
Non Violations	8	50%	1	9%	25	23%	2	23%	1	58%
Violations	8	50%	3	91%	86	77%	7	77%	9	42%
Total Events	16	100%	4	100%	111	100%	9	100%	10	100%
Violations	Quantity	% of Viol	Quantity	% of Viol	Quantity	% of Viol	Quantity	% of Viol	Quantity	% of Viol
Uncont. Non-Issued Viol	2	13%	1	33%	36	32%	3	32%	4	36%
Cont. Non-Issued Viol	4	25%	1	33%	30	27%	3	27%	2	19%
Citations	2	13%	1	17%	20	18%	2	18%	3	32%
Daily Av. Vehicle Counts	3,766		4,437		51,780		4,315		4,245	
Av. Violation Speed	11.5		10.2		12.3		12.3		12.9	
Av. Issued Speed	13.0		3.3		9.9		9.9		15.2	
Av. Violation Sec.	16.5		6.8		17.6		17.6		38.2	
Av. Issued Sec.	6.9		2.2		4.6		4.6		43.1	
Cal. Days/Enforc. Days	31	31	30	30	365	365	30	30	31	31
Daily Citation Yield	0.06	0.06	0.02	0.02	0.05	0.05	0.05	0.05	0.11	0.11
Cit /Viol. Iss. Rate	25%		20%		23%		23%		37%	
Controllable Iss. Rate	33%		33%		40%		40%		62%	
Non - Violations	Quantity	% Non-Viol	Quantity	% Non-Viol	Quantity	% Non-Viol	Quantity	% Non-Viol	Quantity	% Non-Viol
Rear Axle Violation	0	0%	0	0%	0	0%	0	0%	0	0%
Gate Down - No Train	8	100%	0	50%	17	68%	1	68%	0	0%
Train Activation	0	0%	0	0%	0	0%	0	0%	0	0%
Right Turn	0	0%	0	0%	0	0%	0	0%	0	0%
No Violation Occurred	0	0%	0	50%	8	32%	1	32%	1	100%
Total Non Violations	8	100%	1	100%	25	100%	2	100%	1	100%
Uncontrollable Non-Iss	Quantity	% of Un.Non	Quantity	% of Un.Non	Quantity	% of Un.Non	Quantity	% of Un.Non	Quantity	% of Un.Non
No Plate	0	0%	0	25%	7	19%	1	19%	1	23%
Out of State Plate	0	0%	0	0%	0	0%	0	0%	0	0%
Glare on Plate	0	0%	0	0%	0	0%	0	0%	0	0%
Illegible Plate	0	0%	0	0%	0	0%	0	0%	0	0%
Plate Obstructed	0	0%	0	0%	0	0%	0	0%	0	4%
Windshield Glare	0	0%	0	0%	7	19%	1	19%	1	31%
Driver Obstructed	0	0%	0	0%	3	8%	0	8%	0	4%
Car Obstructed	0	0%	0	0%	2	6%	0	6%	0	0%
Emergency Vehicle	0	0%	0	0%	0	0%	0	0%	0	8%
No DMV Match Found	2	100%	0	25%	15	42%	1	42%	1	19%
LASD Expired	0	0%	0	25%	1	3%	0	3%	0	8%
Other	0	0%	0	25%	1	3%	0	3%	0	4%
Total	2	100%	1	100%	36	100%	3	100%	4	100%
Controllable Non-Iss	Quantity	% Cont. Non	Quantity	% Cont. Non	Quantity	% Cont. Non	Quantity	% Cont. Non	Quantity	% Cont. Non
Framing of Plate	0	0%	1	50%	10	33%	1	33%	0	21%
Focus / Clarity of Plate	1	25%	0	0%	2	7%	0	7%	0	0%
Dark Interior	0	0%	0	0%	2	7%	0	7%	0	0%
Framing of Driver	0	0%	0	0%	0	0%	0	0%	0	14%
Focus / Clarity of Driver	0	0%	0	0%	1	3%	0	3%	0	0%
Framing of Car	1	25%	1	50%	12	40%	1	40%	1	43%
Data Error	0	0%	0	0%	0	0%	0	0%	0	0%
Exposure	0	0%	0	0%	0	0%	0	0%	0	0%
Equipment Malfunction	0	0%	0	0%	1	3%	0	3%	0	7%
LASD Return	2	50%	0	0%	2	7%	0	7%	0	14%
ACS Expired	0	0%	0	0%	0	0%	0	0%	0	0%
Total	4	100%	1	100%	30	100%	3	100%	2	100%



A Xerox Company

Los Angeles County MTA Blue Line Approach Summary Report

Location 2003: EB Washington Boulevard @ Los Angeles Street



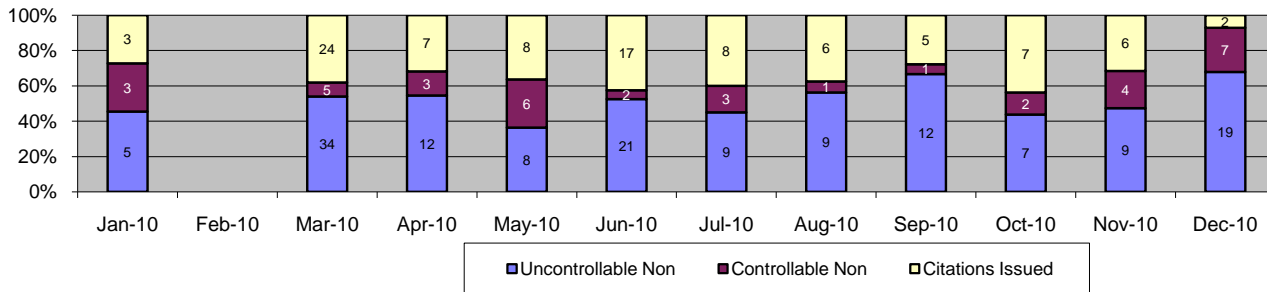
Events	Dec-10		3 Month Average		Year to Date Total		Year to Date Average		2009 Average	
	Quantity	% of Events	Quantity	% of Events	Quantity	% of Events	Quantity	% of Events	Quantity	% of Events
Non Violations	497	85%	494	83%	7,025	83%	585	83%	903	83%
Violations	89	15%	110	17%	1,449	17%	121	17%	164	17%
Total Events	586	100%	604	100%	8,474	100%	706	100%	1,066	100%
<i>Violations</i>	<i>Quantity</i>	<i>% of Viol</i>	<i>Quantity</i>	<i>% of Viol</i>	<i>Quantity</i>	<i>% of Viol</i>	<i>Quantity</i>	<i>% of Viol</i>	<i>Quantity</i>	<i>% of Viol</i>
Uncont. Non-Issued Viol	42	7%	56	9%	754	9%	63	9%	67	6%
Cont. Non-Issued Viol	6	1%	14	2%	138	2%	12	2%	31	3%
Citations	41	7%	41	7%	557	7%	46	7%	65	6%
Daily Av. Vehicle Counts	851		948		19,426		1,619		1,082	
Av. Violation Speed	17.9		18.4		18.0		18.0		17.7	
Av. Issued Speed	17.7		18.3		17.8		17.8		17.8	
Av. Violation Sec.	8.5		14.1		11.3		11.3		16.6	
Av. Issued Sec.	2.0		5.1		5.6		5.6		3.7	
Cal. Days/Enforc. Days	31	31	30	30	365	365	30	30	31	31
Daily Citation Yield	1.32	1.32	1.36	1.36	1.53	1.53	1.53	1.53	2.13	2.13
Cit /Viol. Iss. Rate	46%		38%		38%		38%		40%	
Controllable Iss. Rate	87%		75%		80%		80%		68%	
<i>Non - Violations</i>	<i>Quantity</i>	<i>% Non-Viol</i>	<i>Quantity</i>	<i>% Non-Viol</i>	<i>Quantity</i>	<i>% Non-Viol</i>	<i>Quantity</i>	<i>% Non-Viol</i>	<i>Quantity</i>	<i>% Non-Viol</i>
Rear Axle Violation	0	0%	0	0%	9	0%	1	0%	2	0%
Gate Down - No Train	0	0%	0	0%	0	0%	0	0%	0	0%
Train Activation	0	0%	0	0%	8	0%	1	0%	5	1%
Right Turn	0	0%	0	0%	0	0%	0	0%	0	0%
No Violation Occurred	497	100%	493	100%	7,008	100%	584	100%	896	99%
Total Non Violations	497	100%	494	100%	7025	100%	585	100%	903	100%
<i>Uncontrollable Non-Iss</i>	<i>Quantity</i>	<i>% of Un.Non</i>	<i>Quantity</i>	<i>% of Un.Non</i>	<i>Quantity</i>	<i>% of Un.Non</i>	<i>Quantity</i>	<i>% of Un.Non</i>	<i>Quantity</i>	<i>% of Un.Non</i>
No Plate	10	24%	11	19%	152	20%	13	20%	12	18%
Out of State Plate	1	2%	2	4%	20	3%	2	3%	1	2%
Glare on Plate	1	2%	0	0%	2	0%	0	0%	1	1%
Illegible Plate	0	0%	0	0%	16	2%	1	2%	1	2%
Plate Obstructed	4	10%	5	9%	52	7%	4	7%	6	9%
Windshield Glare	6	14%	11	20%	211	28%	18	28%	16	23%
Driver Obstructed	0	0%	4	7%	39	5%	3	5%	3	5%
Car Obstructed	11	26%	13	22%	130	17%	11	17%	11	16%
Emergency Vehicle	1	2%	1	2%	15	2%	1	2%	2	3%
No DMV Match Found	6	14%	8	14%	98	13%	8	13%	13	19%
LASD Expired	0	0%	2	3%	17	2%	1	2%	2	3%
Other	2	5%	0	0%	2	0%	0	0%	0	0%
Total	42	100%	56	100%	754	100%	63	100%	67	100%
<i>Controllable Non-Iss</i>	<i>Quantity</i>	<i>% Cont. Non</i>	<i>Quantity</i>	<i>% Cont. Non</i>	<i>Quantity</i>	<i>% Cont. Non</i>	<i>Quantity</i>	<i>% Cont. Non</i>	<i>Quantity</i>	<i>% Cont. Non</i>
Framing of Plate	3	50%	2	12%	20	14%	2	14%	2	7%
Focus / Clarity of Plate	0	0%	1	5%	7	5%	1	5%	1	2%
Dark Interior	0	0%	2	11%	22	16%	2	17%	1	3%
Framing of Driver	0	0%	0	0%	3	2%	0	2%	0	1%
Focus / Clarity of Driver	0	0%	0	0%	4	3%	0	3%	0	0%
Framing of Car	0	0%	1	7%	5	4%	0	4%	0	1%
Data Error	0	0%	0	0%	0	0%	0	0%	0	0%
Exposure	0	0%	3	24%	10	7%	1	7%	1	2%
Equipment Malfunction	0	0%	2	11%	4	3%	0	3%	26	83%
LASD Return	3	50%	4	29%	62	45%	5	45%	0	0%
ACS Expired	0	0%	0	0%	1	1%	0	1%	0	0%
Total	6	100%	14	100%	138	100%	12	103%	31	100%



A XEROX Company

Los Angeles County MTA Blue Line Approach Summary Report

Location 2008: WB Washington Boulevard @ Los Angeles Street



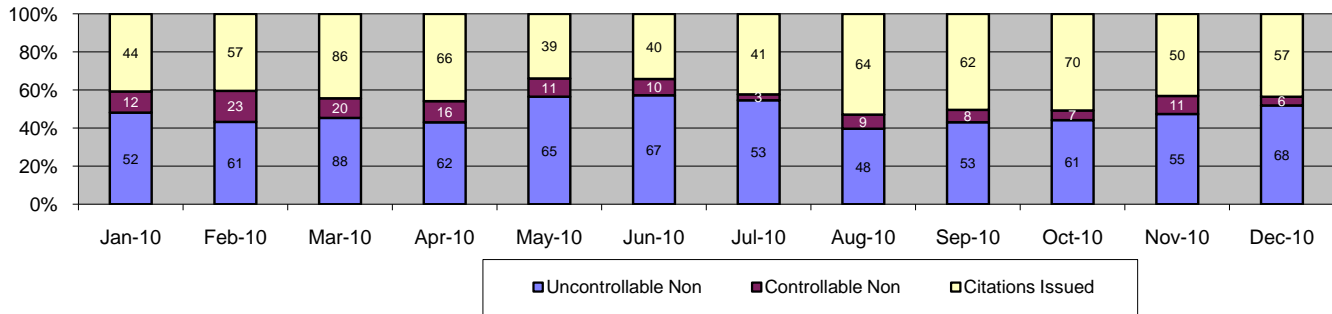
Events	Dec-10		3 Month Average		Year to Date Total		Year to Date Average		2009 Average	
	Quantity	% of Events	Quantity	% of Events	Quantity	% of Events	Quantity	% of Events	Quantity	% of Events
Non Violations	237	89%	202	55%	2,320	89%	193	89%	643	97%
Violations	28	11%	18	11%	275	11%	23	11%	21	3%
Total Events	265	100%	219	67%	2,595	100%	216	100%	665	100%
<i>Violations</i>	<i>Quantity</i>	<i>% of Viol</i>	<i>Quantity</i>	<i>% of Viol</i>	<i>Quantity</i>	<i>% of Viol</i>	<i>Quantity</i>	<i>% of Viol</i>	<i>Quantity</i>	<i>% of Viol</i>
Uncont. Non-Issued Viol	19	7%	9	4%	145	6%	12	6%	15	2%
Cont. Non-Issued Viol	7	3%	2	1%	37	1%	3	1%	1	0%
Citations	2	1%	6	3%	93	4%	8	4%	5	1%
Daily Av. Vehicle Counts	220		280		3,077		256		330	
Av. Violation Speed	19.9		19.6		16.6		16.6		18.0	
Av. Issued Speed	15.5		20.1		16.2		16.2		16.7	
Av. Violation Sec.	31.0		26.5		25.3		25.3		38.3	
Av. Issued Sec.	29.8		16.8		17.7		17.7		23.8	
Cal. Days/Enforc. Days	31	31	30	30	365	365	30	30	31	31
Daily Citation Yield	0.06	0.06	0.20	0.20	0.25	0.25	0.25	0.25	0.16	0.16
Cit /Viol. Iss. Rate		7%		34%		34%		34%		23%
Controllable Iss. Rate		22%		72%		72%		72%		77%
<i>Non - Violations</i>	<i>Quantity</i>	<i>% Non-Viol</i>	<i>Quantity</i>	<i>% Non-Viol</i>	<i>Quantity</i>	<i>% Non-Viol</i>	<i>Quantity</i>	<i>% Non-Viol</i>	<i>Quantity</i>	<i>% Non-Viol</i>
Rear Axle Violation	0	0%	0	0%	2	0%	0	0%	0	0%
Gate Down - No Train	0	0%	0	0%	0	0%	0	0%	0	0%
Train Activation	0	0%	0	0%	4	0%	0	0%	9	1%
Right Turn	0	0%	0	0%	0	0%	0	0%	0	0%
No Violation Occurred	237	100%	202	100%	2,314	100%	193	100%	635	99%
Total Non Violations	237	100%	202	100%	2,320	100%	193	100%	643	100%
<i>Uncontrollable Non-Iss</i>	<i>Quantity</i>	<i>% of Un.Non</i>	<i>Quantity</i>	<i>% of Un.Non</i>	<i>Quantity</i>	<i>% of Un.Non</i>	<i>Quantity</i>	<i>% of Un.Non</i>	<i>Quantity</i>	<i>% of Un.Non</i>
No Plate	3	16%	1	7%	21	14%	2	14%	1	9%
Out of State Plate	0	0%	0	4%	2	1%	0	1%	0	1%
Glare on Plate	0	0%	0	0%	0	0%	0	0%	0	0%
Illegible Plate	0	0%	0	0%	0	0%	0	0%	0	1%
Plate Obstructed	0	0%	0	0%	0	0%	0	0%	1	6%
Windshield Glare	4	21%	1	11%	17	12%	1	12%	0	3%
Driver Obstructed	1	5%	1	14%	18	12%	2	12%	1	6%
Car Obstructed	10	53%	2	21%	34	23%	3	23%	5	32%
Emergency Vehicle	1	5%	1	7%	15	10%	1	10%	3	20%
No DMV Match Found	0	0%	3	36%	38	26%	3	26%	3	18%
LASD Expired	0	0%	0	0%	0	0%	0	0%	1	5%
Other	0	0%	0	0%	0	0%	0	0%	0	0%
Total	19	100%	9	100%	145	100%	12	100%	15	100%
<i>Controllable Non-Iss</i>	<i>Quantity</i>	<i>% Cont. Non</i>	<i>Quantity</i>	<i>% Cont. Non</i>	<i>Quantity</i>	<i>% Cont. Non</i>	<i>Quantity</i>	<i>% Cont. Non</i>	<i>Quantity</i>	<i>% Cont. Non</i>
Framing of Plate	0	0%	0	0%	0	0%	0	0%	0	0%
Focus / Clarity of Plate	0	0%	0	0%	0	0%	0	0%	0	0%
Dark Interior	5	71%	2	86%	16	43%	1	43%	0	10%
Framing of Driver	0	0%	0	0%	3	8%	0	8%	0	10%
Focus / Clarity of Driver	0	0%	0	0%	1	3%	0	3%	0	10%
Framing of Car	0	0%	0	0%	0	0%	0	0%	0	10%
Data Error	0	0%	0	0%	0	0%	0	0%	0	0%
Exposure	0	0%	0	0%	1	3%	0	3%	0	30%
Equipment Malfunction	1	14%	0	0%	1	3%	0	3%	0	10%
LASD Return	1	14%	0	14%	14	38%	1	38%	0	20%
ACS Expired	0	0%	0	0%	1	3%	0	3%	0	0%
Total	7	100%	2	100%	37	100%	3	100%	1	100%



A Xerox Company

Los Angeles County MTA Blue Line Approach Summary Report

Location 2017: EB Washington Boulevard @ San Pedro Street



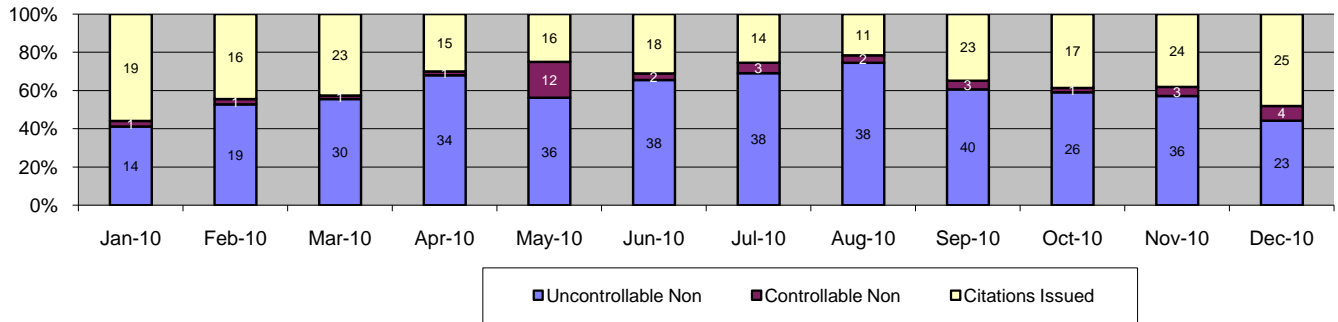
Events	Dec-10		3 Month Average		Year to Date Total		Year to Date Average		2009 Average	
	Quantity	% of Events	Quantity	% of Events	Quantity	% of Events	Quantity	% of Events	Quantity	% of Events
Non Violations	296	69%	269	75%	4,405	74%	367	74%	517	51%
Violations	131	31%	126	25%	1,545	26%	129	26%	141	49%
Total Events	427	100%	394	100%	5,950	100%	496	100%	659	100%
Violations	Quantity	% of Viol	Quantity	% of Viol	Quantity	% of Viol	Quantity	% of Viol	Quantity	% of Viol
Uncont. Non-Issued Viol	68	16%	56	14%	733	12%	61	12%	60	9%
Cont. Non-Issued Viol	6	1%	9	2%	136	2%	11	2%	26	4%
Citations	57	13%	61	15%	676	11%	56	11%	55	8%
Daily Av. Vehicle Counts	1,819		1,982		26,603		2,217		2,093	
Av. Violation Speed	18.5		18.3		18.1		18.1		17.6	
Av. Issued Speed	18.4		18.2		17.9		17.9		17.6	
Av. Violation Sec.	6.7		6.0		6.1		6.1		10.9	
Av. Issued Sec.	5.1		2.7		3.0		3.0		2.6	
Cal. Days/Enforc. Days	31	31	30	30	365	365	30	30	31	31
Daily Citation Yield	1.84	1.84	2.00	2.00	1.85	1.85	1.85	1.85	1.80	1.80
Cit /Viol. Iss. Rate	44%		48%		44%		44%		39%	
Controllable Iss. Rate	90%		88%		83%		83%		68%	
Non - Violations	Quantity	% Non-Viol	Quantity	% Non-Viol	Quantity	% Non-Viol	Quantity	% Non-Viol	Quantity	% Non-Viol
Rear Axle Violation	1	0%	1	0%	8	0%	1	0%	0	0%
Gate Down - No Train	0	0%	0	0%	0	0%	0	0%	0	0%
Train Activation	0	0%	0	0%	11	0%	1	0%	7	1%
Right Turn	0	0%	0	0%	0	0%	0	0%	0	0%
No Violation Occurred	295	100%	267	100%	4,386	100%	366	100%	510	99%
Total Non Violations	296	100%	269	100%	4,405	100%	367	100%	517	100%
Uncontrollable Non-Iss	Quantity	% of Un.Non	Quantity	% of Un.Non	Quantity	% of Un.Non	Quantity	% of Un.Non	Quantity	% of Un.Non
No Plate	9	13%	9	16%	116	16%	10	16%	11	17%
Out of State Plate	3	4%	1	2%	24	3%	2	3%	2	4%
Glare on Plate	0	0%	0	0%	0	0%	0	0%	0	0%
Illegible Plate	1	1%	0	0%	2	0%	0	0%	0	0%
Plate Obstructed	2	3%	0	1%	8	1%	1	1%	1	2%
Windshield Glare	6	9%	10	17%	115	16%	10	16%	10	17%
Driver Obstructed	4	6%	5	9%	50	7%	4	7%	4	7%
Car Obstructed	17	25%	17	30%	217	30%	18	30%	17	29%
Emergency Vehicle	5	7%	3	5%	30	4%	3	4%	3	5%
No DMV Match Found	15	22%	10	18%	152	21%	13	21%	11	18%
LASD Expired	0	0%	1	2%	13	2%	1	2%	0	0%
Other	6	9%	0	0%	6	1%	1	1%	1	1%
Total	68	100%	56	100%	733	100%	61	100%	60	100%
Controllable Non-Iss	Quantity	% Cont. Non	Quantity	% Cont. Non	Quantity	% Cont. Non	Quantity	% Cont. Non	Quantity	% Cont. Non
Framing of Plate	0	0%	0	0%	5	4%	0	4%	0	2%
Focus / Clarity of Plate	0	0%	0	0%	0	0%	0	0%	0	0%
Dark Interior	1	17%	1	15%	11	8%	1	8%	0	1%
Framing of Driver	1	17%	1	12%	22	16%	2	16%	2	9%
Focus / Clarity of Driver	0	0%	0	0%	0	0%	0	0%	0	1%
Framing of Car	1	17%	0	0%	4	3%	0	3%	2	7%
Data Error	1	17%	0	0%	1	1%	0	1%	0	0%
Exposure	0	0%	0	4%	1	1%	0	1%	1	5%
Equipment Malfunction	0	0%	0	0%	7	5%	1	5%	20	76%
LASD Return	2	33%	6	69%	84	62%	7	62%	0	0%
ACS Expired	0	0%	0	0%	1	1%	0	1%	0	0%
Total	6	100%	9	100%	136	100%	11	100%	26	100%



A Xerox Company

Los Angeles County MTA Blue Line Approach Summary Report

Location 2018: WB Washington Boulevard @ San Pedro Street



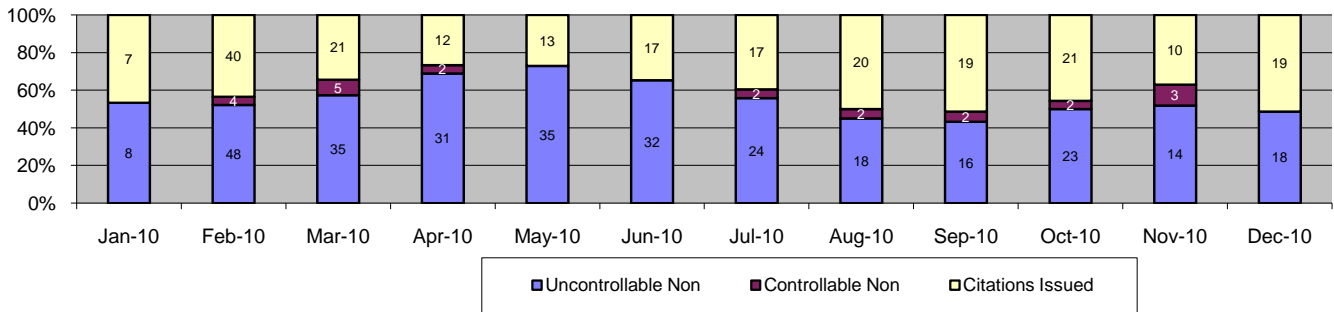
Events	Dec-10		3 Month Average		Year to Date Total		Year to Date Average		2009 Average	
	Quantity	% of Events	Quantity	% of Events	Quantity	% of Events	Quantity	% of Events	Quantity	% of Events
Non Violations	462	90%	469	90%	5,581	90%	465	90%	510	78%
Violations	52	10%	58	10%	627	10%	52	10%	43	22%
Total Events	514	100%	527	100%	6,208	100%	517	100%	553	100%
<i>Violations</i>	<i>Quantity</i>	<i>% of Viol</i>	<i>Quantity</i>	<i>% of Viol</i>	<i>Quantity</i>	<i>% of Viol</i>	<i>Quantity</i>	<i>% of Viol</i>	<i>Quantity</i>	<i>% of Viol</i>
Uncont. Non-Issued Viol	23	4%	34	6%	372	6%	31	6%	27	5%
Cont. Non-Issued Viol	4	1%	2	0%	34	1%	3	1%	1	0%
Citations	25	5%	21	4%	221	4%	18	4%	16	3%
Daily Av. Vehicle Counts	1,142		1,217		18,246		1,520		1,166	
Av. Violation Speed	17.5		19.7		19.8		19.8		19.2	
Av. Issued Speed	18.6		18.9		19.1		19.1		18.9	
Av. Violation Sec.	19.5		19.7		18.1		18.1		17.5	
Av. Issued Sec.	12.5		4.8		6.5		6.5		4.9	
Cal. Days/Enforc. Days	31	31	30	30	365	365	30	30	31	31
Daily Citation Yield	0.81	0.81	0.70	0.70	0.61	0.61	0.61	0.61	0.51	0.51
Cit /Viol. Iss. Rate	48%		37%		35%		35%		36%	
Controllable Iss. Rate	86%		90%		87%		87%		95%	
<i>Non - Violations</i>	<i>Quantity</i>	<i>% Non-Viol</i>	<i>Quantity</i>	<i>% Non-Viol</i>	<i>Quantity</i>	<i>% Non-Viol</i>	<i>Quantity</i>	<i>% Non-Viol</i>	<i>Quantity</i>	<i>% Non-Viol</i>
Rear Axle Violation	0	0%	0	0%	2	0%	0	0%	0	0%
Gate Down - No Train	0	0%	0	0%	0	0%	0	0%	0	0%
Train Activation	0	0%	0	0%	6	0%	1	0%	8	2%
Right Turn	0	0%	0	0%	0	0%	0	0%	0	0%
No Violation Occurred	462	100%	469	100%	5,573	100%	464	100%	502	98%
Total Non Violations	462	100%	469	100%	5581	100%	465	100%	510	100%
<i>Uncontrollable Non-Iss</i>	<i>Quantity</i>	<i>% of Un.Non</i>	<i>Quantity</i>	<i>% of Un.Non</i>	<i>Quantity</i>	<i>% of Un.Non</i>	<i>Quantity</i>	<i>% of Un.Non</i>	<i>Quantity</i>	<i>% of Un.Non</i>
No Plate	3	13%	3	9%	34	9%	3	9%	3	10%
Out of State Plate	0	0%	2	7%	11	3%	1	3%	1	4%
Glare on Plate	0	0%	0	0%	0	0%	0	0%	0	0%
Illegible Plate	0	0%	0	0%	1	0%	0	0%	0	1%
Plate Obstructed	1	4%	0	0%	1	0%	0	0%	1	3%
Windshield Glare	1	4%	1	4%	29	8%	2	8%	2	9%
Driver Obstructed	0	0%	2	7%	19	5%	2	5%	2	7%
Car Obstructed	8	35%	13	37%	140	38%	12	38%	7	24%
Emergency Vehicle	1	4%	4	13%	42	11%	4	11%	3	11%
No DMV Match Found	8	35%	8	24%	91	24%	8	24%	6	21%
LASD Expired	0	0%	0	0%	1	0%	0	0%	2	9%
Other	1	4%	0	0%	3	1%	0	1%	0	0%
Total	23	100%	34	100%	372	100%	31	100%	27	100%
<i>Controllable Non-Iss</i>	<i>Quantity</i>	<i>% Cont. Non</i>	<i>Quantity</i>	<i>% Cont. Non</i>	<i>Quantity</i>	<i>% Cont. Non</i>	<i>Quantity</i>	<i>% Cont. Non</i>	<i>Quantity</i>	<i>% Cont. Non</i>
Framing of Plate	0	0%	0	0%	1	3%	0	3%	0	0%
Focus / Clarity of Plate	0	0%	0	0%	0	0%	0	0%	0	0%
Dark Interior	0	0%	0	0%	3	9%	0	9%	0	0%
Framing of Driver	0	0%	0	0%	1	3%	0	3%	0	0%
Focus / Clarity of Driver	0	0%	0	0%	0	0%	0	0%	0	0%
Framing of Car	1	25%	0	0%	1	3%	0	3%	0	17%
Data Error	0	0%	0	0%	0	0%	0	0%	0	0%
Exposure	0	0%	0	14%	2	6%	0	6%	0	0%
Equipment Malfunction	0	0%	0	0%	0	0%	0	0%	1	83%
LASD Return	3	75%	2	86%	25	74%	2	74%	0	0%
ACS Expired	0	0%	0	0%	1	3%	0	3%	0	0%
Total	4	100%	2	100%	34	100%	3	100%	1	100%



A XEROX Company

Los Angeles County MTA Blue Line Approach Summary Report

Location 2027: EB Washington Boulevard @ Broadway Street



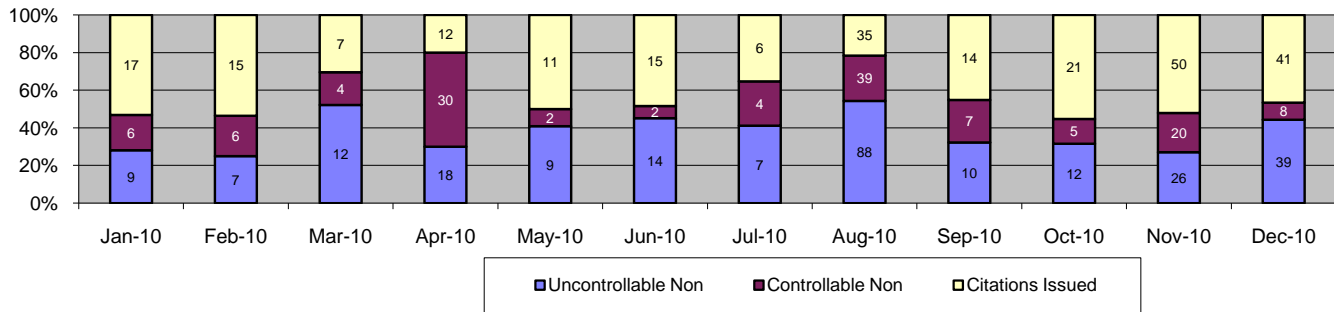
Events	Dec-10		3 Month Average		Year to Date Total		Year to Date Average		2009 Average	
	Quantity	% of Events	Quantity	% of Events	Quantity	% of Events	Quantity	% of Events	Quantity	% of Events
Non Violations	357	91%	365	85%	4,354	89%	363	89%	475	92%
Violations	37	9%	37	15%	540	11%	45	11%	37	8%
Total Events	394	100%	402	100%	4,894	100%	408	100%	512	100%
Violations	Quantity	% of Viol	Quantity	% of Viol	Quantity	% of Viol	Quantity	% of Viol	Quantity	% of Viol
Uncont. Non-Issued Viol	18	5%	18	4%	302	6%	25	6%	21	4%
Cont. Non-Issued Viol	0	0%	2	1%	22	0%	2	0%	3	1%
Citations	19	5%	17	4%	216	4%	18	4%	13	3%
Daily Av. Vehicle Counts	420		498		6,069		506		1,344	
Av. Violation Speed	18.1		17.1		17.4		17.4		18.3	
Av. Issued Speed	17.1		16.4		16.8		16.8		17.8	
Av. Violation Sec.	34.0		24.7		24.4		24.4		26.4	
Av. Issued Sec.	13.2		9.1		11.6		11.6		13.4	
Cal. Days/Enforc. Days	31	31	30	30	365	365	30	30	31	29
Daily Citation Yield	0.61	0.61	0.55	0.55	0.59	0.59	0.59	0.59	0.42	0.45
Cit /Viol. Iss. Rate	51%		45%		40%		40%		35%	
Controllable Iss. Rate	100%		88%		91%		91%		81%	
Non - Violations	Quantity	% Non-Viol	Quantity	% Non-Viol	Quantity	% Non-Viol	Quantity	% Non-Viol	Quantity	% Non-Viol
Rear Axle Violation	0	0%	0	0%	3	0%	0	0%	0	0%
Gate Down - No Train	0	0%	0	0%	0	0%	0	0%	0	0%
Train Activation	0	0%	0	0%	2	0%	0	0%	6	1%
Right Turn	0	0%	0	0%	0	0%	0	0%	0	0%
No Violation Occurred	357	100%	365	100%	4,349	100%	362	100%	470	99%
Total Non Violations	357	100%	365	100%	4354	100%	363	100%	475	100%
Uncontrollable Non-Iss	Quantity	% of Un.Non	Quantity	% of Un.Non	Quantity	% of Un.Non	Quantity	% of Un.Non	Quantity	% of Un.Non
No Plate	3	17%	2	11%	36	12%	3	12%	2	10%
Out of State Plate	0	0%	0	0%	2	1%	0	1%	0	1%
Glare on Plate	0	0%	0	0%	2	1%	0	1%	0	0%
Illegible Plate	0	0%	0	2%	4	1%	0	1%	0	1%
Plate Obstructed	0	0%	1	4%	11	4%	1	4%	2	8%
Windshield Glare	1	6%	1	8%	22	7%	2	7%	2	10%
Driver Obstructed	3	17%	3	17%	41	14%	3	14%	2	8%
Car Obstructed	3	17%	6	34%	102	34%	9	34%	9	43%
Emergency Vehicle	1	6%	2	11%	33	11%	3	11%	2	10%
No DMV Match Found	7	39%	2	13%	45	15%	4	15%	2	8%
LASD Expired	0	0%	0	0%	4	1%	0	1%	0	2%
Other	0	0%	0	0%	0	0%	0	0%	0	0%
Total	18	100%	18	100%	302	100%	25	100%	21	100%
Controllable Non-Iss	Quantity	% Cont. Non	Quantity	% Cont. Non	Quantity	% Cont. Non	Quantity	% Cont. Non	Quantity	% Cont. Non
Framing of Plate	0	0%	0	14%	6	27%	1	27%	1	38%
Focus / Clarity of Plate	0	0%	0	0%	1	5%	0	5%	0	10%
Dark Interior	0	0%	1	29%	3	14%	0	14%	0	0%
Framing of Driver	0	0%	0	0%	1	5%	0	5%	0	10%
Focus / Clarity of Driver	0	0%	0	0%	2	9%	0	9%	0	0%
Framing of Car	0	0%	0	14%	2	9%	0	9%	1	24%
Data Error	0	0%	0	0%	0	0%	0	0%	0	0%
Exposure	0	0%	0	0%	0	0%	0	0%	0	5%
Equipment Malfunction	0	0%	0	0%	0	0%	0	0%	0	0%
LASD Return	0	0%	1	43%	7	32%	1	32%	0	14%
ACS Expired	0	0%	0	0%	0	0%	0	0%	0	0%
Total	0	100%	2	100%	22	100%	2	100%	3	100%



A Xerox Company

Los Angeles County MTA Blue Line Approach Summary Report

Location 2036: SB Flower Street @ 18th Street



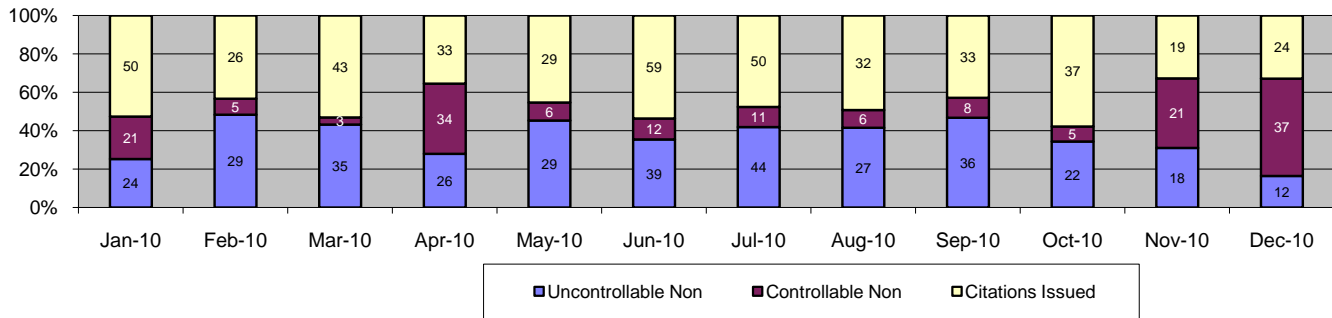
Events	Dec-10		3 Month Average		Year to Date Total		Year to Date Average		2009 Average	
	Quantity	% of Events	Quantity	% of Events	Quantity	% of Events	Quantity	% of Events	Quantity	% of Events
Non Violations	74	46%	72	80%	1,298	67%	108	67%	141	74%
Violations	88	54%	55	20%	628	33%	52	33%	38	26%
Total Events	162	100%	127	100%	1,926	100%	161	100%	179	100%
<i>Violations</i>	<i>Quantity</i>	<i>% of Viol</i>	<i>Quantity</i>	<i>% of Viol</i>	<i>Quantity</i>	<i>% of Viol</i>	<i>Quantity</i>	<i>% of Viol</i>	<i>Quantity</i>	<i>% of Viol</i>
Uncont. Non-Issued Viol	39	24%	16	13%	251	13%	21	13%	16	9%
Cont. Non-Issued Viol	8	5%	11	8%	133	7%	11	7%	6	3%
Citations	41	25%	28	22%	244	13%	20	13%	17	9%
Daily Av. Vehicle Counts	333		369		3,131		261		250	
Av. Violation Speed	15.9		16.9		17.0		17.0		16.1	
Av. Issued Speed	16.0		16.9		17.4		17.4		14.8	
Av. Violation Sec.	11.3		15.1		21.3		21.3		32.1	
Av. Issued Sec.	11.9		13.1		15.3		15.3		9.7	
Cal. Days/Enforc. Days	31	31	30	30	365	365	30	30	31	31
Daily Citation Yield	1.32	1.32	0.93	0.93	0.67	0.67	0.67	0.67	0.54	0.54
Cit /Viol. Iss. Rate	47%		52%		39%		39%		43%	
Controllable Iss. Rate	84%		73%		65%		65%		74%	
<i>Non - Violations</i>	<i>Quantity</i>	<i>% Non-Viol</i>	<i>Quantity</i>	<i>% Non-Viol</i>	<i>Quantity</i>	<i>% Non-Viol</i>	<i>Quantity</i>	<i>% Non-Viol</i>	<i>Quantity</i>	<i>% Non-Viol</i>
Rear Axle Violation	0	0%	0	0%	0	0%	0	0%	0	0%
Gate Down - No Train	0	0%	0	0%	0	0%	0	0%	0	0%
Train Activation	0	0%	0	0%	1	0%	0	0%	2	2%
Right Turn	0	0%	0	0%	0	0%	0	0%	0	0%
No Violation Occurred	74	100%	72	100%	1,297	100%	108	100%	138	98%
Total Non Violations	74	100%	72	100%	1,298	100%	108	100%	141	100%
<i>Uncontrollable Non-Iss</i>	<i>Quantity</i>	<i>% of Un.Non</i>	<i>Quantity</i>	<i>% of Un.Non</i>	<i>Quantity</i>	<i>% of Un.Non</i>	<i>Quantity</i>	<i>% of Un.Non</i>	<i>Quantity</i>	<i>% of Un.Non</i>
No Plate	9	23%	5	31%	63	25%	5	25%	5	31%
Out of State Plate	1	3%	1	6%	12	5%	1	5%	1	6%
Glare on Plate	0	0%	1	4%	3	1%	0	1%	0	0%
Illegible Plate	0	0%	0	0%	2	1%	0	1%	0	2%
Plate Obstructed	1	3%	0	2%	3	1%	0	1%	0	0%
Windshield Glare	1	3%	0	2%	4	2%	0	2%	1	4%
Driver Obstructed	1	3%	1	4%	25	10%	2	10%	2	12%
Car Obstructed	1	3%	3	19%	23	9%	2	9%	1	5%
Emergency Vehicle	2	5%	2	10%	21	8%	2	8%	2	11%
No DMV Match Found	9	23%	3	21%	43	17%	4	17%	4	24%
LASD Expired	0	0%	0	0%	38	15%	3	15%	1	6%
Other	14	36%	0	0%	14	6%	1	6%	0	0%
Total	39	100%	16	100%	251	100%	21	100%	16	100%
<i>Controllable Non-Iss</i>	<i>Quantity</i>	<i>% Cont. Non</i>	<i>Quantity</i>	<i>% Cont. Non</i>	<i>Quantity</i>	<i>% Cont. Non</i>	<i>Quantity</i>	<i>% Cont. Non</i>	<i>Quantity</i>	<i>% Cont. Non</i>
Framing of Plate	0	0%	0	0%	0	0%	0	0%	0	0%
Focus / Clarity of Plate	0	0%	0	0%	0	0%	0	0%	0	3%
Dark Interior	0	0%	0	0%	2	2%	0	2%	0	0%
Framing of Driver	0	0%	0	0%	0	0%	0	0%	0	0%
Focus / Clarity of Driver	0	0%	0	0%	1	1%	0	1%	0	0%
Framing of Car	0	0%	0	0%	4	3%	0	3%	0	5%
Data Error	0	0%	0	0%	0	0%	0	0%	0	0%
Exposure	0	0%	1	6%	2	2%	0	2%	0	0%
Equipment Malfunction	0	0%	0	3%	2	2%	0	2%	1	13%
LASD Return	7	88%	10	91%	120	90%	10	90%	5	80%
ACS Expired	1	13%	0	0%	2	2%	0	2%	0	0%
Total	8	100%	11	100%	133	100%	11	100%	6	100%



A Xerox Company

Los Angeles County MTA Blue Line Approach Summary Report

Location 2046: SB Flower to EB 10 Fwy On Ramp

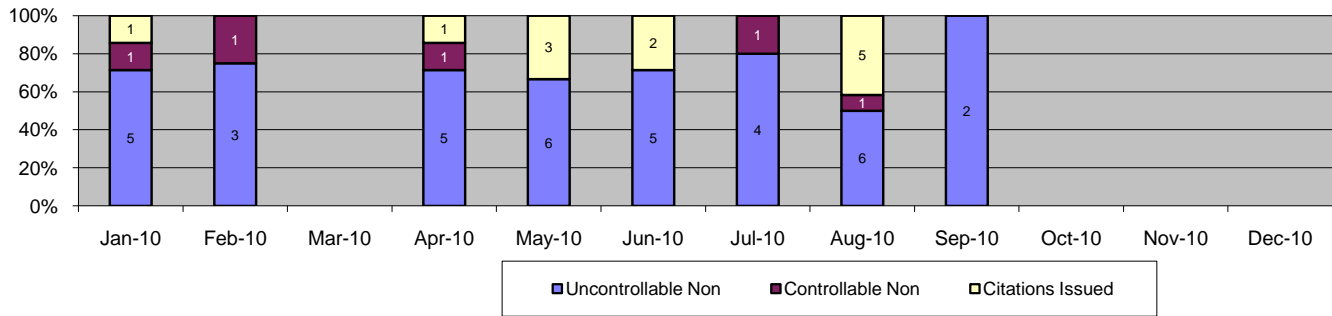


Events	Dec-10		3 Month Average		Year to Date Total		Year to Date Average		2009 Average	
	Quantity	% of Events	Quantity	% of Events	Quantity	% of Events	Quantity	% of Events	Quantity	% of Events
Non Violations	117	62%	158	76%	2,542	73%	212	73%	290	92%
Violations	73	38%	66	24%	945	27%	79	27%	64	8%
Total Events	190	100%	225	100%	3,487	100%	291	100%	354	100%
<i>Violations</i>	<i>Quantity</i>	<i>% of Viol</i>	<i>Quantity</i>	<i>% of Viol</i>	<i>Quantity</i>	<i>% of Viol</i>	<i>Quantity</i>	<i>% of Viol</i>	<i>Quantity</i>	<i>% of Viol</i>
Uncont. Non-Issued Viol	12	6%	25	11%	341	10%	28	10%	25	7%
Cont. Non-Issued Viol	37	19%	11	5%	169	5%	14	5%	1	0%
Citations	24	13%	30	13%	435	12%	36	12%	39	11%
Daily Av. Vehicle Counts	3,334		3,410		37,835		3,153		2,654	
Av. Violation Speed	27.4		19.9		20.9		20.9		20.1	
Av. Issued Speed	19.9		19.7		20.2		20.2		20.1	
Av. Violation Sec.	11.9		11.2		10.9		10.9		9.2	
Av. Issued Sec.	1.4		7.7		6.3		6.3		7.8	
Cal. Days/Enforc. Days	31	31	30	30	365	365	30	30	31	29
Daily Citation Yield	0.77	0.77	0.98	0.98	1.19	1.19	1.19	1.19	1.27	1.33
Cit /Viol. Iss. Rate	33%		45%		46%		46%		60%	
Controllable Iss. Rate	39%		72%		72%		72%		97%	
<i>Non - Violations</i>	<i>Quantity</i>	<i>% Non-Viol</i>	<i>Quantity</i>	<i>% Non-Viol</i>	<i>Quantity</i>	<i>% Non-Viol</i>	<i>Quantity</i>	<i>% Non-Viol</i>	<i>Quantity</i>	<i>% Non-Viol</i>
Rear Axle Violation	0	0%	0	0%	2	0%	0	0%	0	0%
Gate Down - No Train	0	0%	0	0%	0	0%	0	0%	0	0%
Train Activation	0	0%	0	0%	6	0%	1	0%	10	3%
Right Turn	0	0%	0	0%	0	0%	0	0%	0	0%
No Violation Occurred	117	100%	158	100%	2,534	100%	211	100%	280	96%
Total Non Violations	117	100%	158	100%	2,542	100%	212	100%	290	100%
<i>Uncontrollable Non-Iss</i>	<i>Quantity</i>	<i>% of Un.Non</i>	<i>Quantity</i>	<i>% of Un.Non</i>	<i>Quantity</i>	<i>% of Un.Non</i>	<i>Quantity</i>	<i>% of Un.Non</i>	<i>Quantity</i>	<i>% of Un.Non</i>
No Plate	4	33%	6	25%	117	34%	10	34%	9	38%
Out of State Plate	0	0%	1	4%	8	2%	1	2%	1	3%
Glare on Plate	0	0%	0	1%	4	1%	0	1%	0	2%
Illegible Plate	0	0%	0	0%	1	0%	0	0%	0	2%
Plate Obstructed	0	0%	0	0%	1	0%	0	0%	0	1%
Windshield Glare	1	8%	1	4%	30	9%	3	9%	2	9%
Driver Obstructed	1	8%	1	5%	16	5%	1	5%	3	12%
Car Obstructed	3	25%	7	28%	88	26%	7	26%	0	1%
Emergency Vehicle	0	0%	1	5%	8	2%	1	2%	1	5%
No DMV Match Found	2	17%	5	21%	58	17%	5	17%	6	23%
LASD Expired	0	0%	2	7%	9	3%	1	3%	1	5%
Other	1	8%	0	0%	1	0%	0	0%	0	0%
Total	12	100%	25	100%	341	100%	28	100%	25	100%
<i>Controllable Non-Iss</i>	<i>Quantity</i>	<i>% Cont. Non</i>	<i>Quantity</i>	<i>% Cont. Non</i>	<i>Quantity</i>	<i>% Cont. Non</i>	<i>Quantity</i>	<i>% Cont. Non</i>	<i>Quantity</i>	<i>% Cont. Non</i>
Framing of Plate	0	0%	0	0%	0	0%	0	0%	0	0%
Focus / Clarity of Plate	0	0%	0	0%	0	0%	0	0%	0	14%
Dark Interior	0	0%	0	3%	1	1%	0	1%	0	0%
Framing of Driver	0	0%	0	0%	0	0%	0	0%	0	0%
Focus / Clarity of Driver	0	0%	0	0%	0	0%	0	0%	0	0%
Framing of Car	0	0%	0	0%	0	0%	0	0%	0	0%
Data Error	0	0%	0	0%	24	14%	2	14%	0	0%
Exposure	34	92%	0	0%	46	27%	4	27%	0	29%
Equipment Malfunction	1	3%	9	82%	36	21%	3	21%	0	43%
LASD Return	2	5%	2	15%	62	37%	5	37%	0	14%
ACS Expired	0	0%	0	0%	0	0%	0	0%	0	0%
Total	37	100%	11	100%	169	100%	14	100%	1	100%



A XEROX Company

Los Angeles County MTA Blue Line Approach Summary Report Location 2054: WB Venice @ Flower

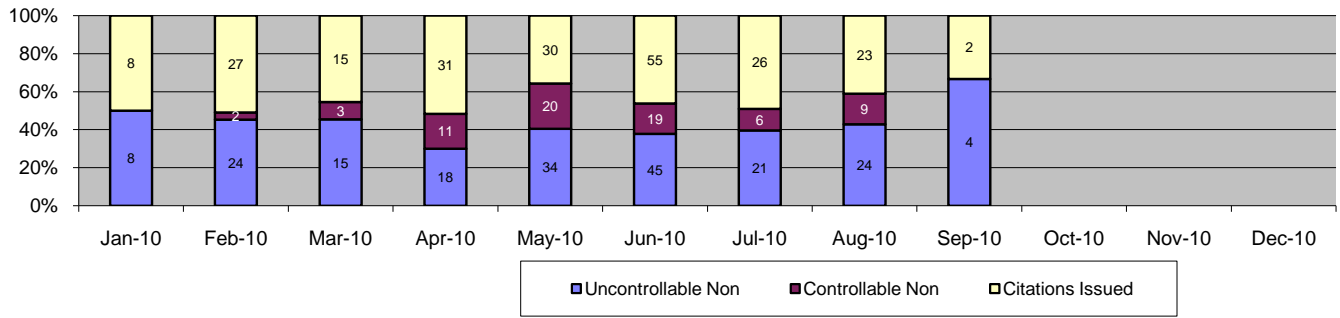


Events	Dec-10		3 Month Average		Year to Date Total		Year to Date Average		2009 Average	
	Quantity	% of Events	Quantity	% of Events	Quantity	% of Events	Quantity	% of Events	Quantity	% of Events
Non Violations	0	0%	5	61%	560	91%	47	91%	81	90%
Violations	0	0%	1	6%	53	9%	4	9%	10	10%
Total Events	0	0%	6	67%	613	100%	51	100%	91	100%
Violations	Quantity	% of Viol	Quantity	% of Viol	Quantity	% of Viol	Quantity	% of Viol	Quantity	% of Viol
Uncont. Non-Issued Viol	0	0%	1	12%	36	6%	3	6%	7	8%
Cont. Non-Issued Viol	0	0%	0	0%	5	1%	0	1%	1	1%
Citations	0	0%	0	0%	12	2%	1	2%	2	3%
Daily Av. Vehicle Counts	0		338		34,135		2,845		3,827	
Av. Violation Speed	0.0		6.2		16.6		16.6		21.4	
Av. Issued Speed	0.0		0.0		9.5		9.5		26.6	
Av. Violation Sec.	0.0		19.4		13.7		13.7		18.7	
Av. Issued Sec.	0.0		0.0		3.7		3.7		3.9	
Cal. Days/Enforc. Days	31	0	30	10	365	273	30	23	31	31
Daily Citation Yield	0.00	0.00	0.00	0.00	0.03	0.04	0.03	0.04	0.08	0.08
Cit /Viol. Iss. Rate		0%		0%		23%		23%		24%
Controllable Iss. Rate		0%		0%		71%		71%		74%
Non - Violations	Dec-09		3 Month Average		Year to Date Total		Year to Date Average		2009 Average	
	Quantity	% Non-Viol	Quantity	% Non-Viol	Quantity	% Non-Viol	Quantity	% Non-Viol	Quantity	% Non-Viol
Rear Axle Violation	0	0%	0	0%	0	0%	0	0%	0	0%
Gate Down - No Train	0	0%	0	0%	0	0%	0	0%	0	0%
Train Activation	0	0%	0	0%	0	0%	0	0%	0	0%
Right Turn	0	0%	0	0%	0	0%	0	0%	0	0%
No Violation Occurred	0	0%	5	100%	560	100%	47	100%	80	99%
Total Non Violations	0	100%	5	100%	560	100%	47	100%	81	100%
Uncontrollable Non-Iss	Quantity	% of Un.Non	Quantity	% of Un.Non	Quantity	% of Un.Non	Quantity	% of Un.Non	Quantity	% of Un.Non
No Plate	0	0%	0	0%	6	17%	1	17%	1	17%
Out of State Plate	0	0%	0	0%	1	3%	0	3%	0	0%
Glare on Plate	0	0%	0	0%	0	0%	0	0%	0	0%
Illegible Plate	0	0%	0	0%	0	0%	0	0%	0	0%
Plate Obstructed	0	0%	0	0%	0	0%	0	0%	0	4%
Windshield Glare	0	0%	0	0%	10	28%	1	28%	1	8%
Driver Obstructed	0	0%	0	0%	0	0%	0	0%	0	2%
Car Obstructed	0	0%	0	0%	6	17%	1	17%	2	25%
Emergency Vehicle	0	0%	1	100%	10	28%	1	28%	2	27%
No DMV Match Found	0	0%	0	0%	1	3%	0	3%	1	13%
LASD Expired	0	0%	0	0%	2	6%	0	6%	0	4%
Other	0	0%	0	0%	0	0%	0	0%	0	0%
Total	0	100%	1	100%	36	100%	3	100%	7	100%
Controllable Non-Iss	Quantity	% Cont. Non	Quantity	% Cont. Non	Quantity	% Cont. Non	Quantity	% Cont. Non	Quantity	% Cont. Non
Framing of Plate	0	0%	0	0%	0	0%	0	0%	0	17%
Focus / Clarity of Plate	0	0%	0	0%	0	0%	0	0%	0	0%
Dark Interior	0	0%	0	0%	2	40%	0	40%	1	67%
Framing of Driver	0	0%	0	0%	0	0%	0	0%	0	0%
Focus / Clarity of Driver	0	0%	0	0%	1	20%	0	20%	0	0%
Framing of Car	0	0%	0	0%	2	40%	0	40%	0	0%
Data Error	0	0%	0	0%	0	0%	0	0%	0	0%
Exposure	0	0%	0	0%	0	0%	0	0%	0	0%
Equipment Malfunction	0	0%	0	0%	0	0%	0	0%	0	0%
LASD Return	0	0%	0	0%	0	0%	0	0%	0	17%
ACS Expired	0	0%	0	0%	0	0%	0	0%	0	0%
Total	0	100%	0	100%	5	100%	0	100%	1	100%



A XEROX Company

Los Angeles County MTA Blue Line Approach Summary Report Location 2056: SB Venice @ Flower



Events	Dec-10		3 Month Average		Year to Date Total		Year to Date Average		2009 Average	
	Quantity	% of Events	Quantity	% of Events	Quantity	% of Events	Quantity	% of Events	Quantity	% of Events
Non Violations	0	0%	5	65%	915	66%	76	66%	102	82%
Violations	0	0%	2	35%	480	34%	40	34%	29	18%
Total Events	0	0%	7	100%	1,395	100%	116	100%	131	100%
<i>Violations</i>	<i>Quantity</i>	<i>% of Viol</i>	<i>Quantity</i>	<i>% of Viol</i>	<i>Quantity</i>	<i>% of Viol</i>	<i>Quantity</i>	<i>% of Viol</i>	<i>Quantity</i>	<i>% of Viol</i>
Uncont. Non-Issued Viol	0	0%	1	19%	193	14%	16	14%	12	9%
Cont. Non-Issued Viol	0	0%	0	0%	70	5%	6	5%	1	1%
Citations	0	0%	1	10%	217	16%	18	16%	15	12%
Daily Av. Vehicle Counts	0		33		2,986		249		288	
Av. Violation Speed	0.0		4.5		12.3		12.3		14.7	
Av. Issued Speed	0.0		4.8		12.4		12.4		15.0	
Av. Violation Sec.	0.0		23.1		28.5		28.5		31.2	
Av. Issued Sec.	0.0		33.3		28.7		28.7		27.5	
Cal. Days/Enforc. Days	31	0	30	10	365	273	30	23	31	26
Daily Citation Yield	0.00	0.00	0.02	0.07	0.59	0.79	0.59	0.79	0.50	0.58
Cit /Viol. Iss. Rate		0%		33%		45%		45%		53%
Controllable Iss. Rate		0%		100%		76%		76%		93%
<i>Non - Violations</i>	<i>Dec-09</i>		<i>3 Month Average</i>		<i>Year to Date Total</i>		<i>Year to Date Average</i>		<i>2009 Average</i>	
	<i>Quantity</i>	<i>% Non-Viol</i>	<i>Quantity</i>	<i>% Non-Viol</i>	<i>Quantity</i>	<i>% Non-Viol</i>	<i>Quantity</i>	<i>% Non-Viol</i>	<i>Quantity</i>	<i>% Non-Viol</i>
Rear Axle Violation	0	0%	0	0%	0	0%	0	0%	0	0%
Gate Down - No Train	0	0%	0	0%	0	0%	0	0%	0	0%
Train Activation	0	0%	0	0%	2	0%	0	0%	3	3%
Right Turn	0	0%	0	0%	0	0%	0	0%	0	0%
No Violation Occurred	0	0%	5	100%	913	100%	76	100%	100	97%
Total Non Violations	0	100%	5	100%	915	100%	76	100%	102	100%
<i>Uncontrollable Non-Iss</i>	<i>Quantity</i>	<i>% of Un.Non</i>	<i>Quantity</i>	<i>% of Un.Non</i>	<i>Quantity</i>	<i>% of Un.Non</i>	<i>Quantity</i>	<i>% of Un.Non</i>	<i>Quantity</i>	<i>% of Un.Non</i>
No Plate	0	0%	0	25%	44	23%	4	23%	2	16%
Out of State Plate	0	0%	0	0%	11	6%	1	6%	1	7%
Glare on Plate	0	0%	0	0%	0	0%	0	0%	0	0%
Illegible Plate	0	0%	0	0%	1	1%	0	1%	0	1%
Plate Obstructed	0	0%	0	0%	2	1%	0	1%	0	2%
Windshield Glare	0	0%	0	0%	2	1%	0	1%	0	0%
Driver Obstructed	0	0%	0	0%	53	27%	4	27%	4	34%
Car Obstructed	0	0%	1	50%	23	12%	2	12%	1	10%
Emergency Vehicle	0	0%	0	0%	9	5%	1	5%	1	8%
No DMV Match Found	0	0%	0	25%	36	19%	3	19%	2	13%
LASD Expired	0	0%	0	0%	12	6%	1	6%	1	8%
Other	0	0%	0	0%	0	0%	0	0%	0	0%
Total	0	100%	1	100%	193	100%	16	100%	12	100%
<i>Controllable Non-Iss</i>	<i>Quantity</i>	<i>% Cont. Non</i>	<i>Quantity</i>	<i>% Cont. Non</i>	<i>Quantity</i>	<i>% Cont. Non</i>	<i>Quantity</i>	<i>% Cont. Non</i>	<i>Quantity</i>	<i>% Cont. Non</i>
Framing of Plate	0	0%	0	0%	2	3%	0	3%	0	0%
Focus / Clarity of Plate	0	0%	0	0%	0	0%	0	0%	0	0%
Dark Interior	0	0%	0	0%	2	3%	0	3%	0	13%
Framing of Driver	0	0%	0	0%	6	9%	1	9%	0	13%
Focus / Clarity of Driver	0	0%	0	0%	0	0%	0	0%	0	0%
Framing of Car	0	0%	0	0%	1	1%	0	1%	1	63%
Data Error	0	0%	0	0%	0	0%	0	0%	0	0%
Exposure	0	0%	0	0%	0	0%	0	0%	0	13%
Equipment Malfunction	0	0%	0	0%	0	0%	0	0%	0	0%
LASD Return	0	0%	0	0%	59	84%	5	84%	0	0%
ACS Expired	0	0%	0	0%	0	0%	0	0%	0	0%
Total	0	100%	0	100%	70	100%	6	100%	1	100%

Calls For Information

Reason for Call	Dec-10	3 Month Average	Year to Date Average	Year to Date Total	2009 Average
<i>Appointment</i>	7	5	5	65	6
<i>Bail</i>	5	9	9	110	11
<i>Complaint</i>	0	0	0	5	0
<i>Contest Violation</i>	14	11	9	108	10
<i>Courtesy Notice</i>	0	0	0	0	0
<i>Explain Citation</i>	1	1	2	21	1
<i>Explain Court</i>	0	0	0	1	0
<i>Explain the Project</i>	0	0	0	0	0
<i>Extension</i>	5	6	5	55	4
<i>Other</i>	0	0	0	1	0
<i>Affidavit of Non-Liability</i>	9	11	11	126	10
<i>Affidavit of Non-Liability Status</i>	1	29	8	94	1
	0	1	2	20	3
Total Calls	42	73	51	606	47
Appointments Scheduled	6	4	5	57	6
Affidavits of Non-Liability Processed	40	56	54	592	53
Court Packets Prepared	45	29	26	311	39



Los Angeles County MTA Blue Line Daily Citation Yield - By Location December 2010

DATE	322	421	821	822	841	981	982	1051	1052	1081	1082	2003	2008	2017	2018	2027	2036	2046	2054	2056	Total
12/01/2010							2					3		1	1		1	3			11
12/02/2010				1								2		2		1		2			8
12/03/2010					1							1		3	1	1		1			8
12/04/2010							1					1		5	1	2		2			12
12/05/2010																		1			1
12/06/2010												1		1		2					4
12/07/2010									1					2		2	1				6
12/08/2010									1	1		4		2	1	2	3	1			15
12/09/2010								1		1		1		3		1	1	2			10
12/10/2010												2		1		2	1				6
12/11/2010				1								2	1	3	2	1	5				15
12/12/2010							1					1		1	1		1				5
12/13/2010										1				3			2				6
12/14/2010					2							3		3	1	1	2				12
12/15/2010					3					1		1		4			2	2			13
12/16/2010			1				1					3	1	1			2				9
12/17/2010					1							1		3	1	1	2	1			10
12/18/2010																					0
12/19/2010											1			2	1		1				5
12/20/2010												2		1	2	1	1				7
12/21/2010							1					1		1		1	2				6
12/22/2010												2		1			2	2			7
12/23/2010												1		2	2		1	1			7
12/24/2010					1		1				1	1		3	1	1	1	1			11
12/25/2010										1				1	2		2	1			7
12/26/2010												1		1	1		2				5
12/27/2010														2	1		1	1			5
12/28/2010							1					1		2	2		1	1			8
12/29/2010							1					3		1			1				6
12/30/2010				1								2		1	3		2	1			10
12/31/2010					1	1	2			2		1		1	1		1	1			11
Totals	0	0	1	3	9	3	10	0	2	7	2	41	2	57	25	19	41	24	0	0	246

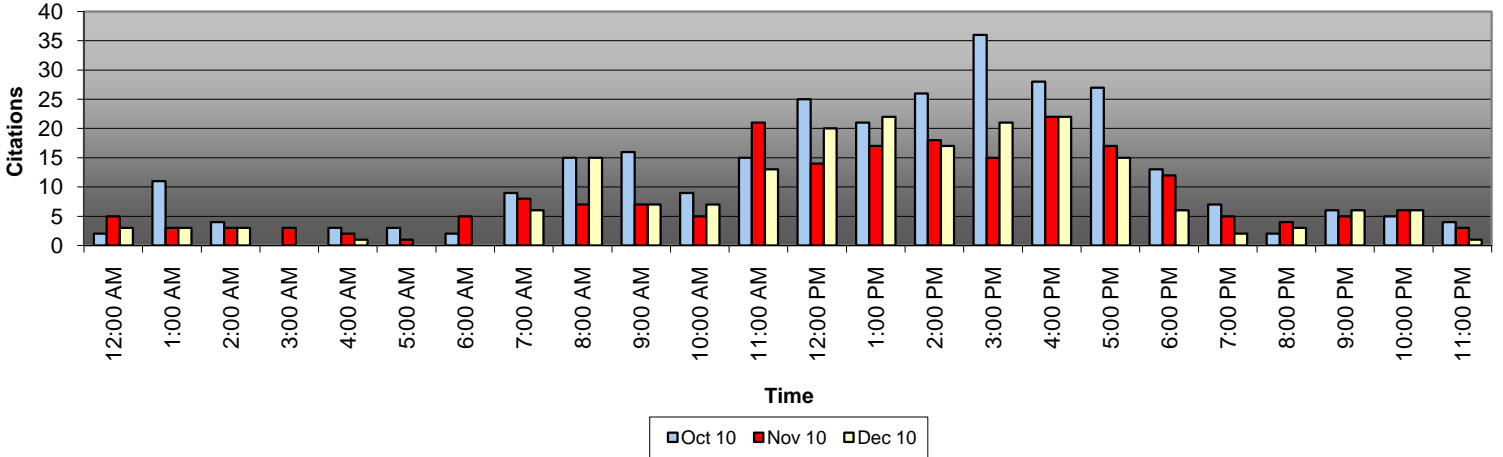
322 = WB 20th @ Long Beach Blvd.
 421 = EB Vernon Ave @ Long Beach Blvd.
 821 = EB Century Blvd. @ Grandee
 822 = WB Century Blvd. @ Grandee
 841 = EB 103rd St @ Long Beach Blvd.
 981 = EB 119th St. @ Willowbrook Blvd.
 982 = WB 119th St. @ Willowbrook Blvd.

1051 = EB 130th @ Willowbrook Blvd.
 1052 = EB Stockwell @ Willowbrook Blvd.
 1081 = EB Stockwell @ Willowbrook Blvd.
 1082 = WB Stockwell @ Willowbrook Blvd.
 2003 = EB Washington to NB Los Angeles
 2008 = WB Washinton to SB Los Angeles
 2017 = EB Washinton to NB San Pedro

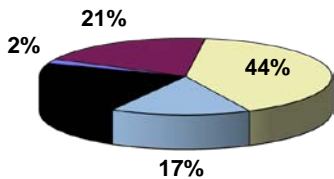
2018 = WB Washinton to SB San Pedro
 2027 = EB Washinton to NB Broadway
 2036 = SB Flower to EB 18th Street
 2046 = SB Flower to EB 18th Street
 2054 = WB Venice @ Flower
 2056 = SB Flower to EB Venice

Site inactive (conduit cut by MTA work crews)

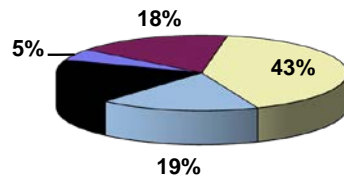
December 2010 View (3 Month Trend)



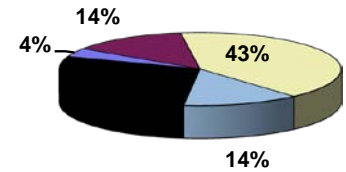
Oct 2010 Weekday Citations



Nov 2010 Weekday Citations

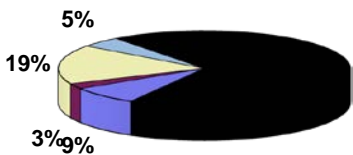


Dec 2010 Weekday Citations

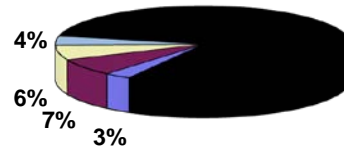


■ 12am to 6am ■ 6am to 12pm ■ 12pm to 6pm
■ 6pm to 12am ■ Weekends

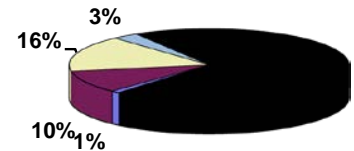
Oct 2010 Weekend Citations



Nov 2010 Weekend Citations

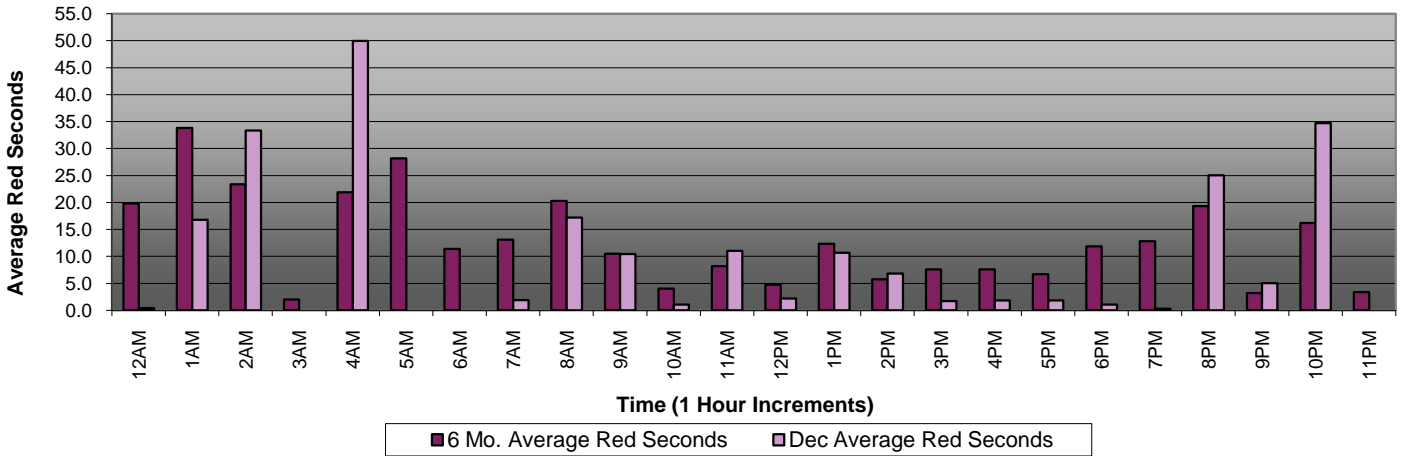


Dec 2010 Weekend Citations

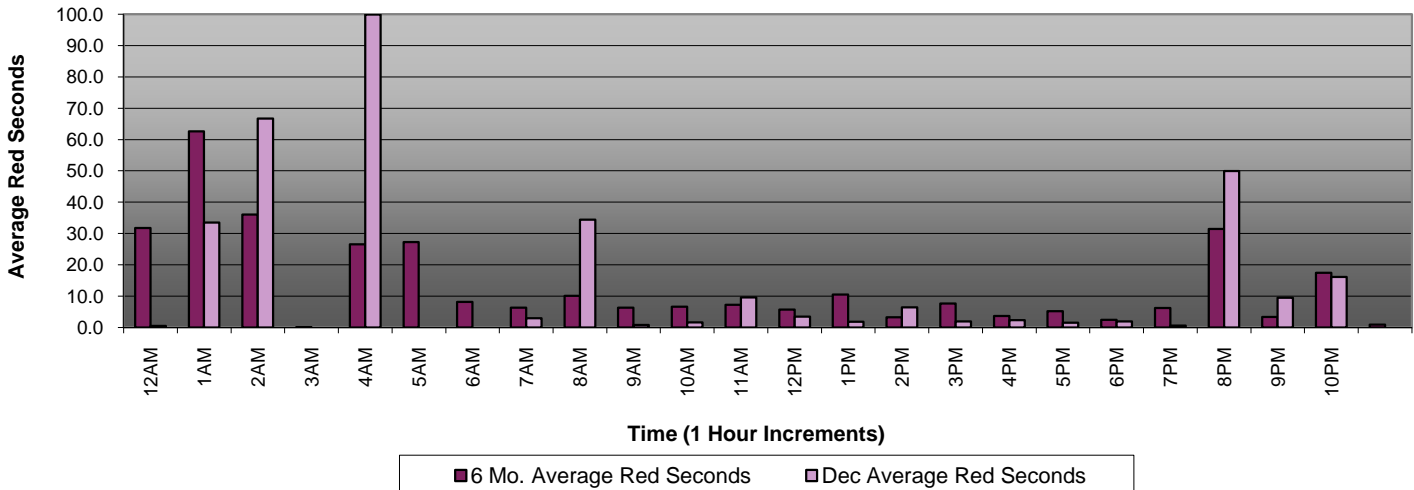


■ 12am to 6am ■ 6am to 12pm ■ 12pm to 6pm
■ 6pm to 12am ■ Weekdays

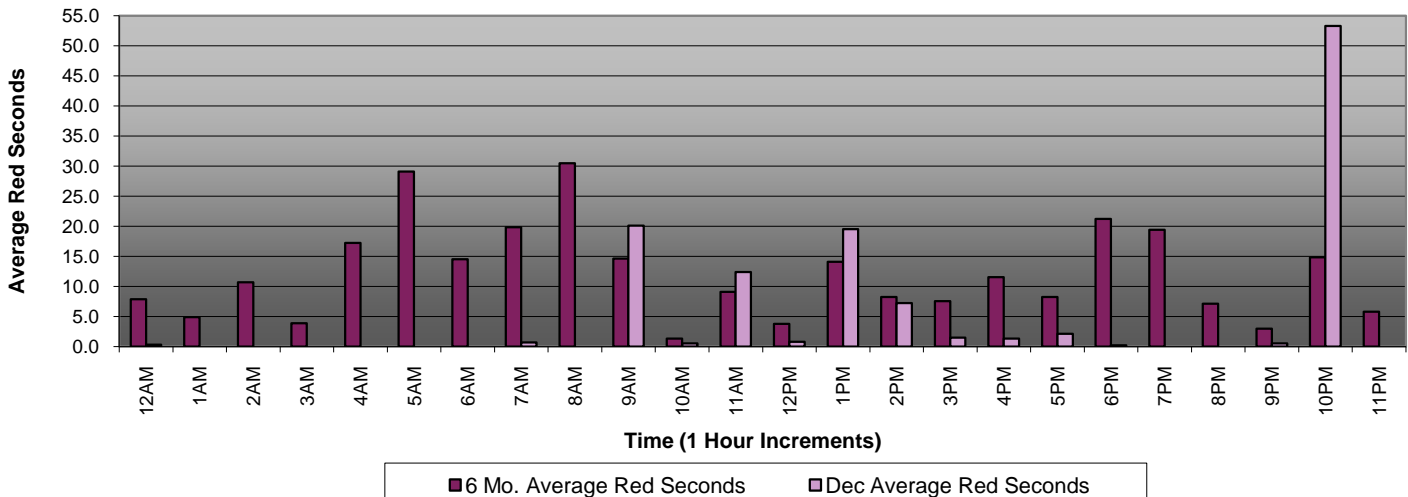
Average Red Seconds (Combined 6 Month Trend, July - December)



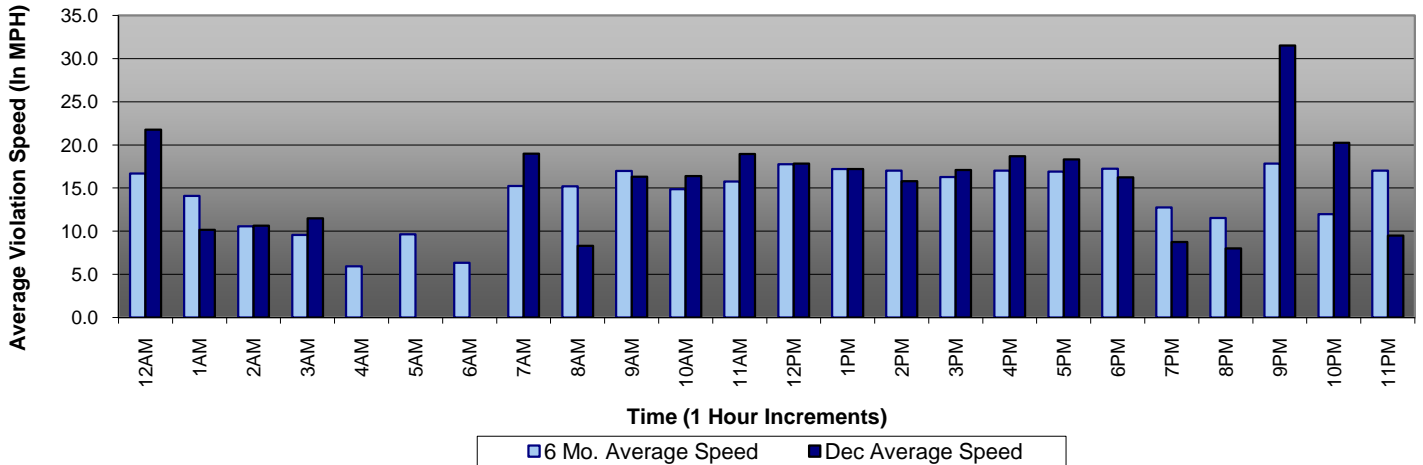
Average Red Seconds (Weekdays 6 Mo. Trend, July - December)



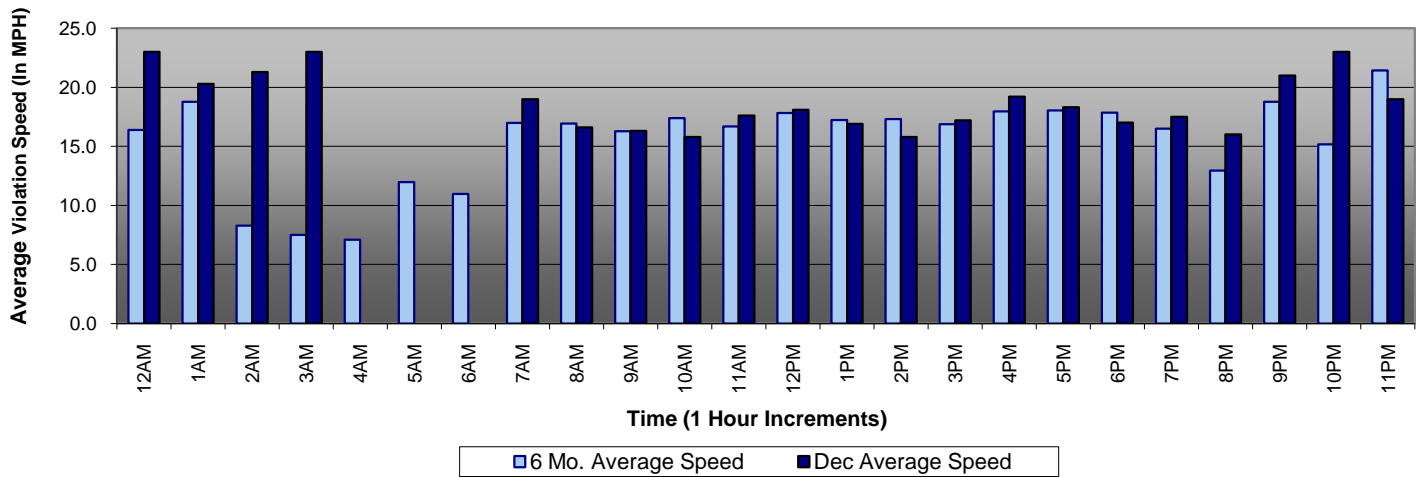
Average Red Seconds (Weekends, 6 Mo. Trend, July - December)



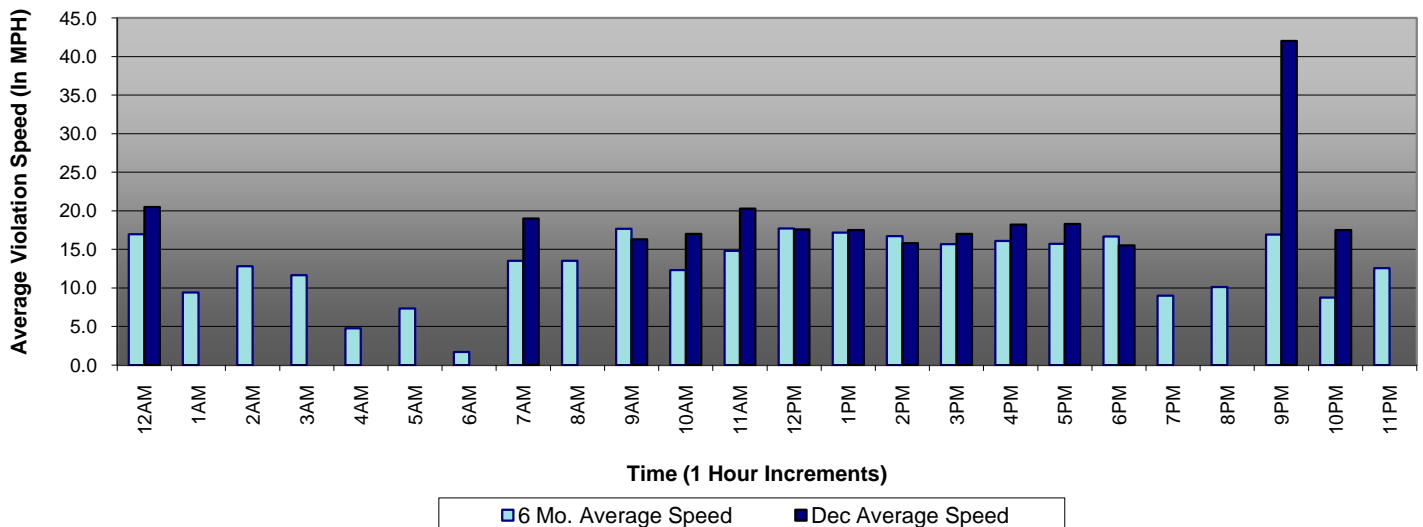
Average Violation Speed (Combined 6 Month Trend, July - December)



Average Violation Speed (Weekdays 6 Mo. Trend, July - December)



Average Violation Speed (Weekends, 6 Mo. Trend, July - December)





A **xerox** Company

Los Angeles County MTA Blue Line Monthly Citation Yield - By Location *December 2010*

Direction	Location	Code	Days of Enforcement	Events	Violations	Citations	Yield*
WB	20th St @ Long Beach Blvd.	322	31	0	0	0	0.00
EB	Vernon Ave @ Long Beach	421	31	12	10	0	0.00
EB	Century Blvd. @ Grandee	821	31	9	5	1	0.03
WB	Century Blvd. @ Grandee	822	31	16	14	3	0.10
EB	103rd St @ Grandee	841	31	38	29	9	0.29
EB	119th St @ Willowbrook	981	31	25	13	3	0.10
WB	119th St @ Willowbrook	982	31	73	44	10	0.32
EB	130th @ Willowbrook	1051	31	12	7	0	0.00
WB	130th @ Willowbrook	1052	31	16	12	2	0.06
EB	Stockwell @ Willowbrook	1081	31	32	17	7	0.23
WB	Stockwell @ Willowbrook	1082	31	16	8	2	0.06
EB	Washington to NB Los Angeles	2003	31	586	89	41	1.32
WB	Washington to SB Los Angeles	2008	31	265	28	2	0.06
EB	Washington to NB San Pedro	2017	31	427	131	57	1.84
WB	Washington to SB San Pedro	2018	31	514	52	25	0.81
EB	Washington to NB Broadway	2027	31	394	37	19	0.61
SB	Flower to EB 18th Street	2036	31	162	88	41	1.32
SB	Flower to EB 10 Fwy On Ramp	2046	31	190	73	24	0.77
WB	Vanice @ Flower	2054	0	0	0	0	NA
SB	Flower to EB Venice	2056	0	0	0	0	NA
Totals			27.9	2,787	657	246	8.82

*Yield is the number of citations issued per day of enforcement.



A **xerox** Company

**Los Angeles County MTA Blue Line
Disposition Summary Report
December 2010**

	Dec-10		3 Month Average		YTD Total		YTD Average		2009 Average	
Disposition Type	Count /Amount Paid		Count /Amount Paid		Count /Amount Paid		Count /Amount Paid		Count /Amount Paid	
<i>Bail Forfeiture</i>	63	\$30,890.00	75	\$36,278.00	898	\$426,083.00	75	\$35,506.92	75	\$33,529.92
<i>Fine Paid</i>	23	\$11,984.00	17	\$8,558.67	240	\$118,937.98	20	\$9,911.50	25	\$10,850.79
<i>Department Void</i>	0	\$0.00	3	\$0.00	22	\$0.00	2	\$0.00	3	\$0.00
<i>Not Guilty</i>	22	\$0.00	16	\$0.00	215	\$0.00	18	\$0.00	21	\$0.00
<i>Section D Void</i>	36	\$0.00	53	\$0.00	650	\$0.00	54	\$0.00	53	\$0.00
<i>Traffic School</i>	37	\$19,390.00	46	\$23,668.33	593	\$298,781.00	49	\$24,898.42	55	\$25,143.42
Court Gross Total	181	\$62,264.00	210	\$68,505.00	2,618	\$843,801.98	218	\$70,316.83	232	\$69,524.13
MTA Gross Total*	123	\$17,802.51	491	\$20,040.82	1731	\$250,880.43	144	\$20,906.70	155	\$22,448.68

*Logic built on following model (assuming the new 2009 fine and fee structure):

MTA receives \$146.31 of \$446.00 citation where bail forfeiture and fine paid occurs

MTA receives \$148.05 of \$509.00 citation when traffic school option is paid for

	<u>Total</u> <u>Events</u>	<u>Non</u> <u>Violations</u>	<u>Potential</u> <u>Violations</u>	<u>Percent</u> <u>Citable</u>	<u>Non Issued</u> <u>Violations</u>	<u>No DMV</u> <u>Match</u>	<u>Police/</u> <u>Client</u> <u>Rejected</u>	<u>Citations</u> <u>Issued</u>	<u>DMV</u> <u>Match</u> <u>Rate</u>	<u>Issuance</u> <u>Rate</u>	<u>Dispo</u> <u>Paid</u>	<u>Pay</u> <u>Rate</u>	<u>Closed</u> <u>No Pay</u>	<u>Pending</u> <u>Open</u>	<u>Closure</u> <u>Rate</u>	<u>Contest</u> <u>Rate</u>
Jan-04	5235	4080	1155	22.06%	420	11	1	735	98.53%	63.64%	541	74%	43	151	79%	-
Feb-04	4775	3564	1211	25.36%	450	13	6	761	98.33%	62.84%	562	74%	53	146	81%	-
Mar-04	5478	4052	1426	26.03%	637	20	3	789	97.54%	55.33%	569	72%	47	173	78%	-
Apr-04	4159	2638	1521	36.57%	788	20	6	733	97.36%	48.19%	551	75%	50	132	82%	-
May-04	4008	2442	1566	39.07%	595	24	4	971	97.60%	62.01%	684	70%	66	221	77%	-
Jun-04	3563	2232	1331	37.36%	729	22	2	602	96.49%	45.23%	421	70%	45	136	77%	-
Jul-04	3772	2425	1347	35.71%	532	19	4	815	97.73%	60.50%	582	71%	64	169	79%	-
Aug-04	3476	2270	1206	34.70%	696	28	12	510	94.91%	42.29%	366	72%	38	106	79%	-
Sep-04	3701	2417	1284	34.69%	823	22	6	461	95.50%	35.90%	340	74%	33	88	81%	-
Oct-04	3497	2260	1237	35.37%	549	15	3	688	97.88%	55.62%	487	71%	65	136	80%	-
Nov-04	3218	2056	1162	36.11%	467	20	15	695	97.26%	59.81%	500	72%	44	151	78%	-
Dec-04	3843	2736	1107	28.81%	590	15	14	517	97.25%	46.70%	375	73%	49	93	82%	-
Jan-05	3656	2621	1035	28.31%	456	15	41	579	97.64%	55.94%	421	73%	36	122	79%	-
Feb-05	3200	2207	993	31.03%	440	9	27	553	98.47%	55.69%	404	73%	43	106	81%	-
Mar-05	3156	2116	1040	32.95%	454	26	29	586	95.94%	56.35%	435	74%	47	104	82%	-
Apr-05	3688	2383	1305	35.39%	755	126	32	550	82.20%	42.15%	403	73%	48	99	82%	-
May-05	3617	2390	1227	33.92%	618	117	24	609	84.40%	49.63%	441	72%	52	116	81%	-
Jun-05	3871	2719	1152	29.76%	650	114	41	502	82.65%	43.58%	351	70%	38	113	77%	-
Jul-05	3507	2277	1230	35.07%	538	111	0	692	86.18%	56.26%	457	66%	102	133	81%	-
Aug-05	3711	2481	1230	33.14%	675	142	19	555	80.17%	45.12%	395	71%	46	114	79%	-
Sep-05	3855	2629	1226	31.80%	562	125	8	664	84.32%	54.16%	475	72%	50	139	79%	-
Oct-05	4897	3728	1169	23.87%	566	97	18	603	86.49%	51.58%	420	70%	57	126	79%	-
Nov-05	4956	3785	1171	23.63%	633	105	16	538	84.07%	45.94%	398	74%	34	106	80%	-
Dec-05	4919	3937	982	19.96%	529	116	26	453	80.50%	46.13%	345	76%	35	73	84%	-
Jan-06	4752	3726	1026	21.59%	558	98	30	468	83.56%	45.61%	348	74%	39	81	83%	14.74%
Feb-06	4929	3808	1121	22.74%	657	97	33	464	83.67%	41.39%	338	73%	34	92	80%	9.29%
Mar-06	5620	4412	1208	21.49%	710	110	72	498	83.82%	41.23%	346	69%	56	96	81%	11.31%
Apr-06	5159	4084	1075	20.84%	572	126	30	503	80.88%	46.79%	368	73%	53	82	84%	19.13%
May-06	4914	3801	1113	22.65%	566	124	26	547	82.21%	49.15%	397	73%	56	94	83%	19.54%
Jun-06	4855	3834	1021	21.03%	531	153	17	490	76.82%	47.99%	366	75%	39	85	83%	14.50%
Jul-06	4835	3620	1215	25.13%	647	108	40	568	84.92%	46.75%	396	70%	59	113	80%	11.56%
Aug-06	4677	3572	1105	23.63%	820	123	19	285	71.19%	25.79%	196	69%	27	62	78%	16.85%
Sep-06	4487	3396	1091	24.31%	702	115	21	389	78.10%	35.66%	265	68%	46	78	80%	13.35%
Oct-06	7566	6244	1322	17.47%	913	181	27	409	70.66%	30.94%	303	74%	21	85	79%	14.21%
Nov-06	5897	4690	1207	20.47%	706	112	52	501	83.16%	41.51%	359	72%	49	93	81%	10.61%
Dec-06	5891	4671	1220	20.71%	697	128	78	523	82.44%	42.87%	378	72%	35	110	79%	36.22%
Jan-07	5244	4035	1209	23.05%	822	129	63	387	77.72%	32.01%	274	71%	37	76	80%	15.09%
Feb-07	4897	3777	1120	22.87%	913	140	61	207	65.69%	18.48%	154	74%	17	36	83%	21.45%
Mar-07	5936	4506	1430	24.09%	967	191	90	463	74.33%	32.38%	326	70%	51	86	81%	11.14%
Apr-07	5139	4237	902	17.55%	595	111	88	307	78.06%	34.04%	202	66%	54	51	83%	24.07%
May-07	1148	471	677	58.97%	270	100	76	407	82.85%	60.12%	289	71%	30	88	78%	18.25%
Jun-07	3802	2589	1213	31.90%	955	125	85	258	73.29%	21.27%	179	69%	13	66	74%	37.01%
Jul-07	3417	2250	1167	34.15%	932	116	96	235	74.05%	20.14%	147	63%	20	68	71%	12.27%
Aug-07	4301	3151	1150	26.74%	861	130	66	289	73.20%	25.13%	193	67%	21	75	74%	48.51%
Sep-07	3904	3069	835	21.39%	588	104	56	247	74.45%	29.58%	144	58%	21	82	67%	13.84%
Oct-07	6157	5056	1101	17.88%	771	100	43	330	78.86%	29.97%	184	56%	40	106	68%	29.61%
Nov-07	7367	6035	1332	18.08%	913	115	2	419	78.54%	31.46%	172	41%	159	88	79%	29.93%
Dec-07	5880	4659	1221	20.77%	869	122	0	352	74.26%	28.83%	158	45%	116	78	78%	24.87%

	<u>Total</u> <u>Events</u>	<u>Non</u> <u>Violations</u>	<u>Potential</u> <u>Violations</u>	<u>Percent</u> <u>Citable</u>	<u>Non Issued</u> <u>Violations</u>	<u>No DMV</u> <u>Match</u>	<u>Police/</u> <u>Client</u> <u>Rejected</u>	<u>Citations</u> <u>Issued</u>	<u>DMV</u> <u>Match</u> <u>Rate</u>	<u>Issuance</u> <u>Rate</u>	<u>Dispo</u> <u>Paid</u>	<u>Pay</u> <u>Rate</u>	<u>Closed</u> <u>No Pay</u>	<u>Pending</u> <u>Open</u>	<u>Closure</u> <u>Rate</u>	<u>Contest</u> <u>Rate</u>
Jan-08	6059	5047	1012	16.70%	679	112	0	333	74.83%	32.91%	208	62%	81	44	87%	28.47%
Feb-08	7348	6296	1052	14.32%	695	122	1	357	74.58%	33.94%	211	59%	87	59	83%	32.61%
Mar-08	6761	5525	1236	18.28%	890	110	2	346	75.98%	27.99%	189	55%	95	62	82%	19.19%
Apr-08	6259	4964	1295	20.69%	1025	94	0	270	74.18%	20.85%	181	67%	45	44	84%	36.08%
May-08	6273	5174	1099	17.52%	906	63	2	193	75.58%	17.56%	118	61%	41	34	82%	24.04%
Jun-08	5517	4350	1167	21.15%	957	74	0	210	73.94%	17.99%	131	62%	40	39	81%	19.43%
Jul-08	5736	4740	996	17.36%	745	74	3	251	77.44%	25.20%	171	68%	38	42	83%	21.69%
Aug-08	5001	3982	1019	20.38%	687	91	2	332	78.59%	32.58%	201	61%	72	59	82%	12.71%
Sep-08	5049	4204	845	16.74%	514	77	1	331	81.17%	39.17%	192	58%	75	64	81%	40.68%
Oct-08	5045	4313	732	14.51%	451	59	0	281	82.65%	38.39%	147	52%	49	85	70%	33.59%
Nov-08	4824	4190	634	13.14%	339	65	0	295	81.94%	46.53%	163	55%	61	71	76%	23.98%
Dec-08	5295	4552	743	14.03%	391	70	0	352	83.41%	47.38%	163	46%	144	45	87%	14.93%
Jan-09	4838	4178	660	13.64%	377	68	0	283	80.63%	42.88%	137	48%	90	56	80%	21.88%
Feb-09	4965	4299	666	13.41%	354	61	1	312	83.69%	46.85%	181	58%	69	62	80%	21.09%
Mar-09	5197	4390	807	15.53%	525	70	2	282	80.23%	34.94%	174	62%	50	58	79%	26.38%
Apr-09	5448	4301	1147	21.05%	782	23	2	365	94.10%	31.82%	167	46%	132	66	82%	31.90%
May-09	4847	4078	769	15.87%	445	92	0	324	77.88%	42.13%	169	52%	95	60	81%	31.39%
Jun-09	4247	3588	659	15.52%	394	54	2	265	83.18%	40.21%	132	50%	81	52	80%	40.33%
Jul-09	4226	3533	693	16.40%	432	64	1	261	80.37%	37.66%	143	55%	59	59	77%	20.11%
Aug-09	4471	3814	657	14.69%	387	60	1	270	81.87%	41.10%	128	47%	83	59	78%	19.16%
Sep-09	3864	3282	582	15.06%	345	53	18	237	82.79%	40.72%	111	47%	84	42	82%	5.33%
Oct-09	4644	4002	642	13.82%	388	75	2	254	77.34%	39.56%	118	46%	87	49	81%	27.27%
Nov-09	3626	3082	544	15.00%	359	53	12	185	78.80%	34.01%	94	51%	50	41	78%	28.67%
Dec-09	4139	3511	628	15.17%	361	49	8	267	84.88%	42.52%	150	56%	53	64	76%	25.78%
Jan-10	3822	3255	567	14.84%	346	38	33	221	86.99%	38.98%	126	57%	33	62	72%	22.52%
Feb-10	3063	2321	742	24.22%	444	80	22	298	80.00%	40.16%	171	57%	37	90	70%	16.10%
Mar-10	3392	2601	791	23.32%	474	91	27	317	79.08%	40.08%	172	54%	42	103	68%	9.57%
Apr-10	3685	2935	750	20.35%	493	55	67	257	85.49%	34.27%	124	48%	60	73	72%	8.00%
May-10	3465	2732	733	21.15%	507	66	59	226	81.20%	30.83%	95	42%	49	82	64%	23.33%
Jun-10	3312	2531	781	23.58%	472	46	45	309	88.50%	39.56%	130	42%	66	113	63%	22.22%
Jul-10	2783	2107	676	24.29%	432	57	34	244	82.99%	36.09%	104	43%	40	100	59%	14.29%
Aug-10	3492	2687	805	23.05%	510	65	62	295	84.60%	36.65%	108	37%	62	125	58%	26.98%
Sep-10	2612	1985	627	24.00%	382	50	22	245	84.23%	39.07%	74	30%	34	137	44%	30.95%
Oct-10	2746	2105	641	23.34%	365	56	12	276	83.72%	43.06%	79	29%	24	173	37%	26.19%
Nov-10	2802	2146	656	23.41%	419	51	51	237	84.96%	36.13%	32	14%	42	163	31%	11.11%
Dec-10	2787	2130	657	23.57%	411	68	25	246	79.94%	37.44%	19	8%	32	195	21%	26.32%
Total	378,172	293,068	85,104	22.50%	50,370	6,746	2,047	34,734	84.50%	40.81%	22,418	62.72%	4,560	7,756	77.92%	22.03%

* Pay Rate and Closure Rate percentages are based on a 3 month (90 day) lag

** Contested Citations Data Available from January 2006 to present

*** Contested Citations take into account a 3 month (90 day) lag from the violation date to the trail date.