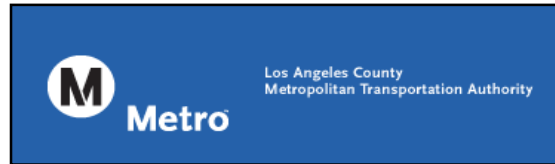




Blue Line Monthly Report

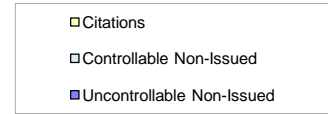
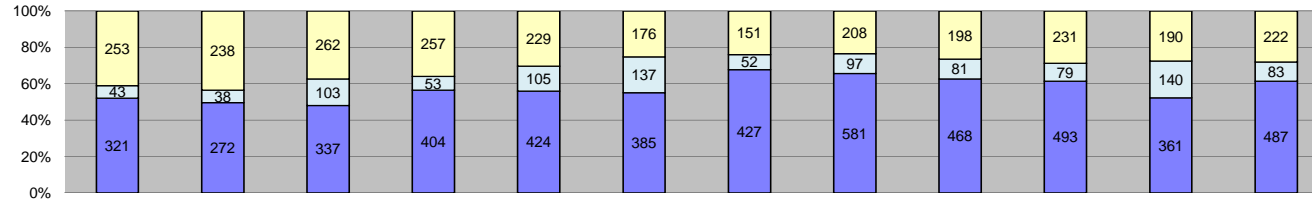


December 2011

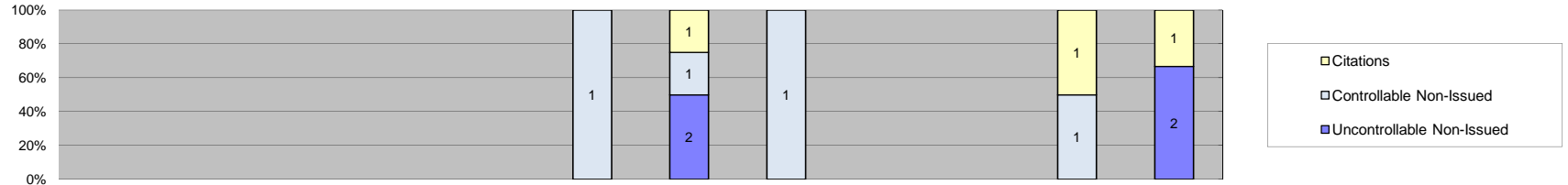


Table of Contents

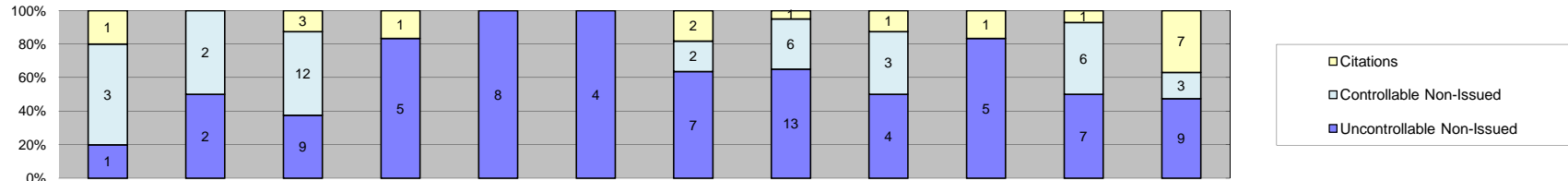
Report Title	Page
<i>Approach Summary Report, All Locations.....</i>	2
<i>Approach Summary Report, Location 322, WB 20th Street @ Long Beach Boulevard.....</i>	3
<i>Approach Summary Report, Location 421, EB Vernon Avenue @ Long Beach Boulevard.....</i>	4
<i>Approach Summary Report, Location 821, EB Century Blvd. @ Grandee Avenue.....</i>	5
<i>Approach Summary Report, Location 822, WB Century Blvd. @ Grandee Avenue.....</i>	6
<i>Approach Summary Report, Location 841, EB 103rd Street @ Grandee Avenue.....</i>	7
<i>Approach Summary Report, Location 981, EB 119th Street @ Willowbrook Boulevard.....</i>	8
<i>Approach Summary Report, Location 982, WB 119th Street @ Willowbrook Boulevard.....</i>	9
<i>Approach Summary Report, Location 1051, EB 130th Street @ Willowbrook Boulevard.....</i>	10
<i>Approach Summary Report, Location 1052, WB 130th Street @ Willowbrook Boulevard.....</i>	11
<i>Approach Summary Report, Location 1081, EB Stockwell Street @ Willowbrook Boulevard.....</i>	12
<i>Approach Summary Report, Location 1082, WB Stockwell Street @ Willowbrook Boulevard.....</i>	13
<i>Approach Summary Report, Location 2003, EB Washington Boulevard @ Los Angeles Street.....</i>	14
<i>Approach Summary Report, Location 2008, WB Washington Boulevard @ Los Angeles Street.....</i>	15
<i>Approach Summary Report, Location 2017, EB Washington Boulevard @ San Pedro Street.....</i>	16
<i>Approach Summary Report, Location 2018, WB Washington Boulevard @ San Pedro Street.....</i>	17
<i>Approach Summary Report, Location 2027, EB Washington Boulevard @ Broadway Street.....</i>	18
<i>Approach Summary Report, Location 2036, SB Flower Street @ 18th Street.....</i>	19
<i>Approach Summary Report, Location 2046, SB Flower Street to EB 10 Freeway On Ramp.....</i>	20
<i>Approach Summary Report, Location 2054, WB Venice @ Flower.....</i>	21
<i>Approach Summary Report, Location 2056, SB Venice @ Flower.....</i>	22
<i>Customer Service Report.....</i>	23
<i>Monthly Citation Yield Report.....</i>	24
<i>Disposition Summary Report.....</i>	25
<i>Performance Report.....</i>	26



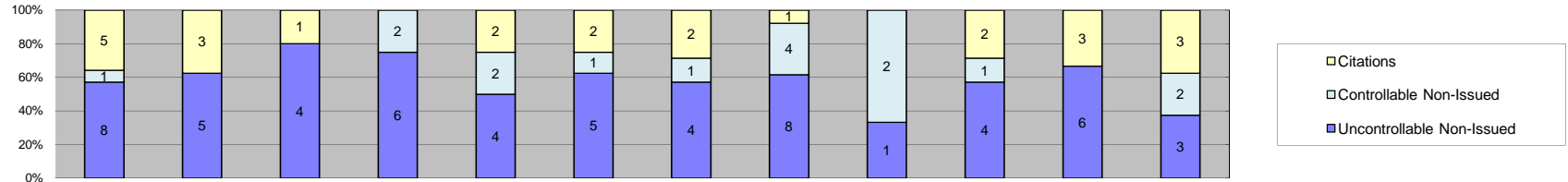
Events	Jan-11	Feb-11	Mar-11	Apr-11	May-11	Jun-11	Jul-11	Aug-11	Sep-11	Oct-11	Nov-11	Dec-11	Year to Date Average		2010 Average	
													Quantity	%	Quantity	%
Non-Violations	2,163	2,157	2,008	2,223	2,527	2,366	2,989	5,027	3,781	3,843	3,384	4,281	3,062	81%	2,461	78%
Violations	617	548	702	714	758	698	630	886	747	803	691	792	716	19%	707	22%
Total:	2,780	2,705	2,710	2,937	3,285	3,064	3,619	5,913	4,528	4,646	4,075	5,073	3,778	100%	3,169	100%
Violations																
Uncontrollable Non-Issued	321	272	337	404	424	385	427	581	468	493	361	487	413	58%	332	47%
Controllable Non-Issued	43	38	103	53	105	137	52	97	81	79	140	83	84	12%	106	15%
Citations	253	238	262	257	229	176	151	208	198	231	190	222	218	30%	270	38%
Total:	617	548	702	714	758	698	630	886	747	803	691	792	716	100%	707	100%
Non-Violations																
Rear Axle Violation	4	5	1	4	5	11	25	11	6	25	7	12	10	0%	2	0%
Gate Down - No Train	17	4	7	33	5	16	5	5	23	14	6	0	12	0%	17	1%
Train Activation	25	19	10	18	20	30	29	23	19	13	25	5	20	1%	19	1%
Emergency Vehicle	7	4	13	19	21	13	13	14	4	3	5	13	11	0%	10	0%
Right Turn	0	0	0	0	0	0	0	0	0	1	0	1	1	0%	0	0%
No Violation Occurred	2,110	2,125	1,977	2,149	2,476	2,296	2,917	4,974	3,729	3,787	3,341	4,250	3,011	98%	2,432	98%
Total:	2,163	2,157	2,008	2,223	2,527	2,366	2,989	5,027	3,781	3,843	3,384	4,281	3,064	100%	2,480	100%
Uncontrollable Non-Issued Violations																
No Plate	45	48	50	58	71	53	52	69	56	57	63	62	57	13%	60	17%
Out of State Plate	11	8	12	9	10	11	3	17	8	12	10	7	10	2%	8	2%
Glare on Plate	0	1	3	1	2	0	0	1	4	0	0	3	2	0%	3	1%
Illegible Plate	3	3	4	0	5	1	2	4	2	1	4	12	4	1%	3	1%
Plate Obstructed	6	5	8	6	7	5	6	13	5	12	14	9	8	2%	11	3%
Windshield Glare	33	37	60	80	81	108	113	86	101	96	50	60	75	18%	61	18%
Driver Obstructed	46	23	34	26	23	14	16	23	20	27	15	27	25	6%	23	7%
Car Obstructed	28	46	49	57	63	63	84	115	102	108	87	129	78	18%	66	19%
No DMV Match Found	73	74	62	74	56	60	50	71	58	65	52	57	63	15%	42	12%
LASD Expired	2	2	0	0	0	0	0	1	1	0	0	3	2	0%	26	8%
LASD Return	20	20	13	88	105	70	101	147	110	115	66	118	81	78%	37	11%
Other	54	49	42	5	1	0	0	34	1	0	0	0	27	6%	8	2%
Total:	321	316	337	404	424	385	427	581	468	493	361	487	430	100%	347	100%
Controllable Non-Issued Violations																
Framing of Plate	8	10	9	4	6	6	3	2	7	6	6	3	6	6%	10	15%
Focus / Clarity of Plate	5	0	1	0	1	4	0	3	4	0	2	2	3	3%	3	4%
Dark Interior	3	12	18	3	12	4	15	18	24	14	16	18	13	13%	12	19%
Framing of Driver	7	1	9	8	3	5	11	9	7	12	11	7	8	7%	4	6%
Focus / Clarity of Driver	0	1	0	4	2	0	2	1	1	5	2	4	2	2%	1	1%
Framing of Car	14	36	23	20	28	17	18	24	21	20	22	16	22	21%	23	35%
Operator/Data Error	1	1	1	11	51	87	0	0	1	0	0	0	22	21%	2	3%
Exposure	2	3	1	3	2	11	0	13	1	3	4	7	5	4%	5	8%
Equipment Malfunction	3	0	41	0	0	3	2	27	15	19	77	26	24	23%	4	7%
ACS Expired	0	0	0	0	0	0	1	0	0	0	0	0	1	1%	1	1%
Total:	43	64	103	53	105	137	52	97	81	79	140	83	104	100%	64	100%
Summary Metrics																
Daily Average Vehicle Passed	73,501	80,235	75,529	84,004	76,790	84,320	73,717	75,054	78,573	78,038	78,802	72,056	Year to Date Average		2010 Average	
Average Issued Speed	13	13	12	16	16	16	16	17	17	17	17	16	77,552		98,432	
Average Issued Red	11.7	7.1	5.1	11.2	12.4	8.2	20.4	9.9	7.9	11.2	12.5	16.5	11.2		11.1	
Citation / Violation Issuance	41%	43%	37%	36%	30%	25%	24%	23%	27%	29%	27%	28%	31%		38%	
Controllable Issuance Rate	85%	86%	72%	83%	69%	56%	74%	68%	71%	75%	58%	73%	72%		72%	



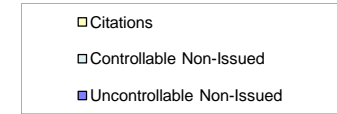
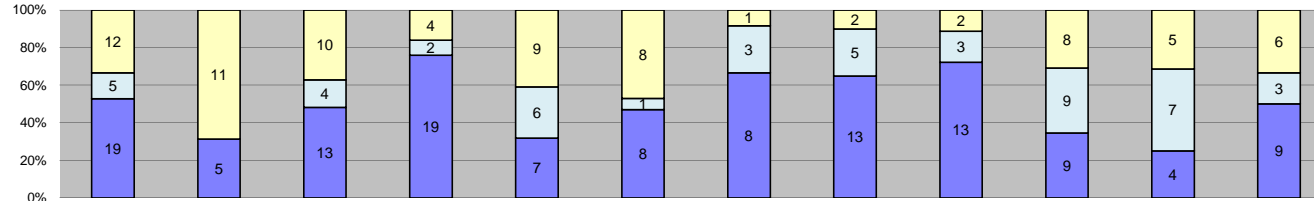
Events	Jan-11	Feb-11	Mar-11	Apr-11	May-11	Jun-11	Jul-11	Aug-11	Sep-11	Oct-11	Nov-11	Dec-11	Year to Date Average		2010 Average	
													Quantity	%	Quantity	%
Non-Violations	0	0	0	1	0	1	0	3	0	0	0	0	0	31%	1	33%
Violations	0	0	0	0	0	1	4	1	0	0	2	3	1	69%	2	67%
Total:	0	0	0	1	0	2	4	4	0	0	2	3	1	100%	3	100%
Violations																
Uncontrollable Non-Issued	0	0	0	0	0	0	2	0	0	0	0	2	0	36%	1	50%
Controllable Non-Issued	0	0	0	0	0	1	1	1	0	0	1	0	0	36%	0	0%
Citations	0	0	0	0	0	0	1	0	0	0	1	1	0	27%	1	50%
Total:	0	0	0	0	0	1	4	1	0	0	2	3	1	100%	2	100%
Non-Violations																
Rear Axle Violation	0	0	0	0	0	0	0	0	0	0	0	0	0	0%	0	0%
Gate Down - No Train	0	0	0	0	0	0	0	3	0	0	0	0	0	60%	1	100%
Train Activation	0	0	0	0	0	0	0	0	0	0	0	0	0	0%	0	0%
Emergency Vehicle	0	0	0	1	0	1	0	0	0	0	0	0	0	40%	0	0%
Right Turn	0	0	0	0	0	0	0	0	0	0	0	0	0	0%	0	0%
No Violation Occurred	0	0	0	0	0	0	0	0	0	0	0	0	0	0%	0	0%
Total:	0	0	0	1	0	1	0	3	0	0	0	0	0	100%	1	100%
Uncontrollable Non-Issued Violations																
No Plate	0	0	0	0	0	0	0	0	0	0	0	1	0	25%	0	0
Out of State Plate	0	0	0	0	0	0	0	0	0	0	0	0	0	0%	0	0
Glare on Plate	0	0	0	0	0	0	0	0	0	0	0	0	0	0%	0	0
Illegible Plate	0	0	0	0	0	0	0	0	0	0	0	1	0	25%	0	0
Plate Obstructed	0	0	0	0	0	0	0	0	0	0	0	0	0	0%	0	0
Windshield Glare	0	0	0	0	0	0	2	0	0	0	0	0	0	50%	0	0
Driver Obstructed	0	0	0	0	0	0	0	0	0	0	0	0	0	0%	0	0
Car Obstructed	0	0	0	0	0	0	0	0	0	0	0	0	0	0%	0	0
No DMV Match Found	0	0	0	0	0	0	0	0	0	0	0	0	0	0%	0	0
LASD Expired	0	0	0	0	0	0	0	0	0	0	0	0	0	0%	0	0
LASD Return	0	0	0	0	0	0	0	0	0	0	0	0	0	0%	0	0
Other	0	0	0	0	0	0	0	0	0	0	0	0	0	0%	0	0
Total:	0	0	0	0	0	0	2	0	0	0	0	2	0	100%	0	0
Controllable Non-Issued Violations																
Framing of Plate	0	0	0	0	0	0	0	0	0	0	0	0	0	0%	0	0
Focus / Clarity of Plate	0	0	0	0	0	1	0	1	0	0	0	0	0	50%	0	0
Dark Interior	0	0	0	0	0	0	1	0	0	0	0	0	0	25%	0	0
Framing of Driver	0	0	0	0	0	0	0	0	0	0	1	0	0	25%	0	0
Focus / Clarity of Driver	0	0	0	0	0	0	0	0	0	0	0	0	0	0%	0	0
Framing of Car	0	0	0	0	0	0	0	0	0	0	0	0	0	0%	0	0
Operator/Data Error	0	0	0	0	0	0	0	0	0	0	0	0	0	0%	0	0
Exposure	0	0	0	0	0	0	0	0	0	0	0	0	0	0%	0	0
Equipment Malfunction	0	0	0	0	0	0	0	0	0	0	0	0	0	0%	0	0
ACS Expired	0	0	0	0	0	0	0	0	0	0	0	0	0	0%	0	0
Total:	0	0	0	0	0	1	1	1	0	0	1	0	0	100%	0	0
Summary Metrics																
Daily Average Vehicle Passes	1,082	1,268	1,266	1,243	1,252	1,425	1,013	1,189	1,112	1,633	1,128	1,014	Year to Date Average		2010 Average	
Average Issued Speed	0	0	0	0	0	0	5	0	0	0	21	13	7	13		
Average Issued Red	0.0	0.0	0.0	0	0	0	99.9	0	0	0	7.1	7.1	19.0	11.5		
Citation / Violation Issuance	0%	0%	0%	0%	0%	0%	25%	0%	0%	0%	50%	33%	22%	50%		
Controllable Issuance Rate	0%	0%	0%	0%	0%	0%	50%	0%	0%	0%	50%	100%	40%	50%		



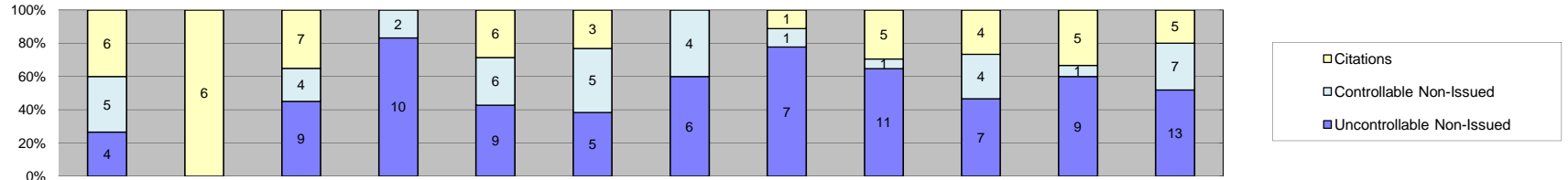
Events	2011												Year to Date Average		2010 Average	
	Jan-11	Feb-11	Mar-11	Apr-11	May-11	Jun-11	Jul-11	Aug-11	Sep-11	Oct-11	Nov-11	Dec-11	Quantity	%	Quantity	%
Non-Violations	5	5	1	23	11	3	1	10	11	0	0	2	6	36%	4	25%
Violations	5	4	24	6	8	4	11	20	8	6	14	19	11	64%	12	75%
Total:	10	9	25	29	19	7	12	30	19	6	14	21	17	100%	16	100%
Violations																
Uncontrollable Non-Issued	1	2	9	5	8	4	7	13	4	5	7	9	6	57%	7	58%
Controllable Non-Issued	3	2	12	0	0	0	2	6	3	0	6	3	3	29%	2	17%
Citations	1	0	3	1	0	0	2	1	1	1	1	7	2	14%	3	25%
Total:	5	4	24	6	8	4	11	20	8	6	14	19	11	100%	12	100%
Non-Violations																
Rear Axle Violation	0	1	0	0	0	0	0	0	0	0	0	1	0	3%	0	0%
Gate Down - No Train	4	1	0	0	0	0	0	0	0	0	0	0	0	7%	2	50%
Train Activation	0	0	0	4	1	1	0	1	0	0	0	0	1	10%	0	0%
Emergency Vehicle	0	0	0	0	0	1	0	0	0	0	0	0	0	1%	0	0%
Right Turn	0	0	0	0	0	0	0	0	0	0	0	0	0	0%	0	0%
No Violation Occurred	1	3	1	19	10	1	1	9	11	0	0	1	5	79%	2	50%
Total:	5	5	1	23	11	3	1	10	11	0	0	2	6	100%	4	100%
Uncontrollable Non-Issued Violations																
No Plate	0	0	0	0	0	0	0	0	0	0	2	1	0	4%	1	17%
Out of State Plate	0	0	2	0	0	0	0	0	0	0	0	0	0	3%	0	0%
Glare on Plate	0	0	0	0	0	0	0	0	0	0	0	0	0	0%	0	0%
Illegible Plate	0	0	0	0	0	0	0	0	0	0	0	0	0	0%	0	0%
Plate Obstructed	0	0	0	0	0	0	0	3	0	0	0	1	0	5%	1	17%
Windshield Glare	0	0	3	3	7	3	5	3	1	3	3	2	3	45%	2	33%
Driver Obstructed	0	1	0	0	0	0	0	0	0	0	0	0	0	1%	0	0%
Car Obstructed	0	0	2	0	1	0	1	3	2	0	0	2	1	15%	1	17%
No DMV Match Found	1	1	2	2	0	1	0	3	1	2	2	2	1	23%	1	17%
LASD Expired	0	0	0	0	0	0	0	0	0	0	0	0	0	0%	0	0%
LASD Return	0	0	0	0	0	0	1	1	0	0	0	1	0	8%	0	0%
Other	0	0	0	0	0	0	0	0	0	0	0	0	0	0%	0	0%
Total:	1	2	9	5	8	4	7	13	4	5	7	9	6	100%	6	100%
Controllable Non-Issued Violations																
Framing of Plate	0	0	1	0	0	0	0	0	0	0	0	0	0	3%	0	0%
Focus / Clarity of Plate	0	0	0	0	0	0	0	0	0	0	0	0	0	0%	0	0%
Dark Interior	0	0	8	0	0	0	1	3	0	0	4	3	2	51%	0	0%
Framing of Driver	0	0	0	0	0	0	0	0	0	0	0	0	0	0%	0	0%
Focus / Clarity of Driver	0	0	0	0	0	0	0	0	1	0	1	0	0	5%	0	0%
Framing of Car	0	0	2	0	0	0	0	1	1	0	0	0	0	11%	1	100%
Operator/Data Error	0	1	1	0	0	0	0	0	0	0	0	0	0	5%	0	0%
Exposure	0	1	0	0	0	0	0	0	1	0	1	0	0	8%	0	0%
Equipment Malfunction	3	0	0	0	0	0	1	2	0	0	0	0	1	16%	0	0%
ACS Expired	0	0	0	0	0	0	0	0	0	0	0	0	0	0%	0	0%
Total:	3	2	12	0	0	0	2	6	3	0	6	3	3	100%	1	100%
Summary Metrics																
Daily Average Vehicle Passes	12,395	13,290	11,264	12,881	12,442	12,298	12,207	11,800	19,109	11,506	11,478	11,302	Year to Date Average		2010 Average	
Average Issued Speed	15	0	15	16	0	0	17	12	22	6	18	16	12,664	12,545		
Average Issued Red	6.9	0.0	7.5	7.8	0	0	7.1	6.4	6.4	7.7	7.2	7.0	14	11		
Citation / Violation Issuance	20%	0%	13%	17%	0%	0%	18%	5%	13%	17%	7%	37%	6.4	16.1		
Controllable Issuance Rate	25%	0%	20%	100%	0%	0%	50%	14%	25%	100%	14%	70%	12%	25%		
													42%	50%		



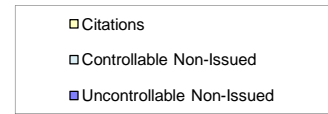
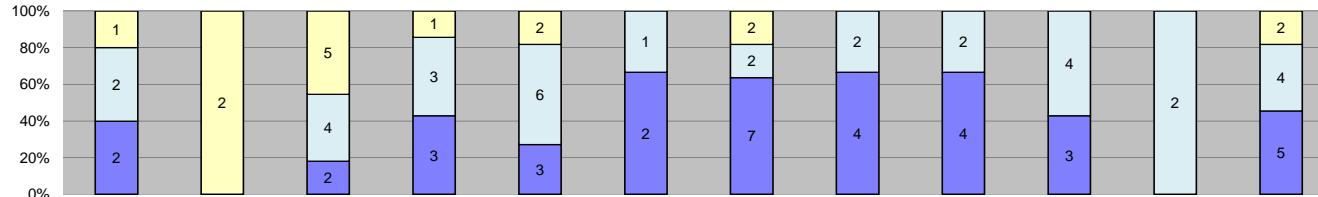
Events	Jan-11	Feb-11	Mar-11	Apr-11	May-11	Jun-11	Jul-11	Aug-11	Sep-11	Oct-11	Nov-11	Dec-11	Year to Date Average		2010 Average	
													Quantity	%	Quantity	%
Non-Violations	3	4	7	7	4	11	3	3	2	0	3	4	4	34%	4	33%
Violations	14	8	5	8	8	8	7	13	3	7	9	8	8	66%	8	67%
Total:	17	12	12	15	12	19	10	16	5	7	12	12	12	100%	12	100%
Violations																
Uncontrollable Non-Issued	8	5	4	6	4	5	4	8	1	4	6	3	5	59%	3	43%
Controllable Non-Issued	1	0	0	2	2	1	1	4	2	1	0	2	1	16%	1	14%
Citations	5	3	1	0	2	2	2	1	0	2	3	3	2	24%	3	43%
Total:	14	8	5	8	8	8	7	13	3	7	9	8	8	100%	7	100%
Non-Violations																
Rear Axle Violation	0	0	0	0	0	0	0	0	0	0	0	0	0	0%	0	0%
Gate Down - No Train	3	2	2	3	0	4	0	0	1	0	0	0	1	29%	2	50%
Train Activation	0	0	0	0	0	0	0	0	0	0	0	0	0	0%	0	0%
Emergency Vehicle	0	1	0	1	0	2	1	1	1	0	0	1	1	16%	0	0%
Right Turn	0	0	0	0	0	0	0	0	0	0	0	0	0	0%	0	0%
No Violation Occurred	0	1	5	3	4	5	2	2	0	0	3	3	2	55%	2	50%
Total:	3	4	7	7	4	11	3	3	2	0	3	4	4	100%	4	100%
Uncontrollable Non-Issued Violations																
No Plate	1	0	1	1	1	0	0	1	0	0	0	1	1	10%	1	33%
Out of State Plate	0	0	0	0	0	0	0	0	0	0	0	0	0	0%	0	0%
Glare on Plate	0	0	0	0	0	0	0	0	0	0	0	0	0	0%	0	0%
Illegible Plate	0	0	1	0	1	0	0	0	0	0	0	0	0	3%	0	0%
Plate Obstructed	0	0	1	0	0	0	0	0	0	0	0	1	0	3%	0	0%
Windshield Glare	1	3	1	4	0	3	1	3	0	1	2	1	2	34%	1	33%
Driver Obstructed	0	0	0	0	0	0	0	0	0	1	0	0	0	2%	0	0%
Car Obstructed	1	0	0	0	0	0	2	0	0	0	0	0	0	5%	0	0%
No DMV Match Found	2	1	0	1	2	1	1	1	0	1	0	0	1	17%	1	33%
LASD Expired	2	1	0	0	0	0	0	0	0	0	0	0	0	5%	0	0%
LASD Return	1	0	0	0	0	1	0	3	1	1	4	0	1	69%	0	0%
Other	0	0	0	0	0	0	0	0	0	0	0	0	0	0%	0	0%
Total:	8	5	4	6	4	5	4	8	1	4	6	3	5	100%	3	100%
Controllable Non-Issued Violations																
Framing of Plate	0	0	0	0	0	0	0	0	0	0	0	0	0	0%	0	0
Focus / Clarity of Plate	0	0	0	0	0	0	0	0	0	0	0	0	0	0%	0	0
Dark Interior	0	0	0	0	1	1	1	1	1	0	0	1	1	38%	0	0
Framing of Driver	1	0	0	0	0	0	0	0	0	0	0	0	0	6%	0	0
Focus / Clarity of Driver	0	0	0	0	0	0	0	0	0	0	0	0	0	0%	0	0
Framing of Car	0	0	0	1	0	0	0	2	0	1	0	0	0	25%	0	0
Operator/Data Error	0	0	0	0	1	0	0	0	0	0	0	0	0	6%	0	0
Exposure	0	0	0	1	0	0	0	1	0	0	0	1	0	19%	0	0
Equipment Malfunction	0	0	0	0	0	0	0	0	1	0	0	0	0	6%	0	0
ACS Expired	0	0	0	0	0	0	0	0	0	0	0	0	0	0%	0	0
Total:	1	0	0	2	2	1	1	4	2	1	0	2	1	100%	0	0
Summary Metrics																
Daily Average Vehicle Passed	10,058	9,999	9,460	9,462	8,929	17,953	8,911	10,394	7,907	9,195	8,859	7,526	9,888		9,510	
Average Issued Speed	18	17	13	0	17	9	14	22	0	20	15	14	16		14	
Average Issued Red	7.6	8.3	6.8	0	6.8	7.8	6.8	6.6	0	7.8	6.9	7.2	7.3		7.8	
Citation / Violation Issuance	36%	38%	20%	0%	25%	25%	29%	8%	0%	29%	33%	38%	23%		43%	
Controllable Issuance Rate	83%	100%	100%	0%	50%	67%	67%	20%	0%	67%	100%	60%	59%		75%	



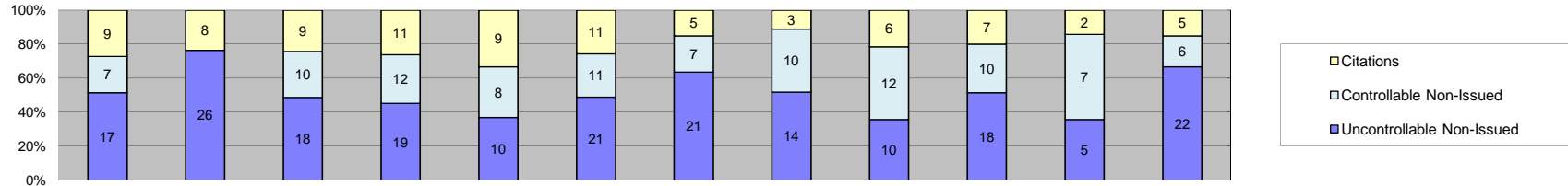
Events	Jan-11	Feb-11	Mar-11	Apr-11	May-11	Jun-11	Jul-11	Aug-11	Sep-11	Oct-11	Nov-11	Dec-11	Year to Date Average		2010 Average	
													Quantity	%	Quantity	%
Non-Violations	11	3	7	4	3	5	3	0	1	1	17	0	5	18%	3	12%
Violations	36	16	27	25	22	17	12	20	18	26	16	18	21	82%	23	88%
Total:	47	19	34	29	25	22	15	20	19	27	33	18	26	100%	26	100%
Violations																
Uncontrollable Non-Issued	19	5	13	19	7	8	8	13	13	9	4	9	11	50%	9	39%
Controllable Non-Issued	5	0	4	2	6	1	3	5	3	9	7	3	4	19%	5	22%
Citations	12	11	10	4	9	8	1	2	2	8	5	6	7	31%	9	39%
Total:	36	16	27	25	22	17	12	20	18	26	16	18	21	100%	23	100%
Non-Violations																
Rear Axle Violation	0	0	0	0	1	0	0	0	0	1	0	0	0	4%	0	0%
Gate Down - No Train	6	1	4	4	0	3	0	0	0	0	0	0	2	33%	2	67%
Train Activation	0	0	0	0	0	0	0	0	0	0	5	0	0	9%	0	0%
Emergency Vehicle	2	1	1	0	1	1	1	0	0	0	0	0	1	13%	0	0%
Right Turn	0	0	0	0	0	0	0	0	0	0	0	0	0	0%	0	0%
No Violation Occurred	3	1	2	0	1	1	2	0	1	0	12	0	2	42%	1	33%
Total:	11	3	7	4	3	5	3	0	1	1	17	0	5	100%	3	100%
Uncontrollable Non-Issued Violations																
No Plate	3	1	0	0	1	2	0	1	2	0	1	2	1	10%	1	13%
Out of State Plate	0	0	1	0	0	0	0	0	0	0	0	0	0	1%	0	0%
Glare on Plate	0	0	0	0	0	0	0	0	0	0	0	0	0	0%	0	0%
Illegible Plate	0	0	0	0	1	0	0	0	0	0	0	0	0	1%	0	0%
Plate Obstructed	1	0	3	0	0	0	0	1	0	0	1	0	1	5%	0	0%
Windshield Glare	1	4	7	9	2	3	5	6	6	4	1	1	4	39%	3	38%
Driver Obstructed	2	0	0	0	0	0	0	1	0	0	0	0	0	2%	1	13%
Car Obstructed	1	0	0	1	0	0	0	1	1	0	0	0	0	3%	1	13%
No DMV Match Found	10	0	1	6	2	1	0	0	2	2	0	2	2	20%	2	25%
LASD Expired	0	0	0	0	0	0	0	0	0	0	0	0	0	0%	0	0%
LASD Return	1	0	1	3	1	2	3	3	2	3	1	4	2	47%	0	0%
Other	0	0	0	0	0	0	0	0	0	0	0	0	0	0%	0	0%
Total:	19	5	13	19	7	8	8	13	13	9	4	9	11	100%	8	100%
Controllable Non-Issued Violations																
Framing of Plate	1	0	0	0	0	0	0	0	0	0	0	0	0	2%	0	0%
Focus / Clarity of Plate	0	0	0	0	0	0	0	0	0	0	0	0	0	0%	0	0%
Dark Interior	2	2	2	0	3	0	2	1	2	2	0	0	1	31%	1	25%
Framing of Driver	1	0	1	0	0	1	0	1	0	2	2	0	1	16%	0	0%
Focus / Clarity of Driver	0	0	0	0	0	0	0	0	0	0	0	0	0	0%	0	0%
Framing of Car	1	1	1	2	3	0	1	2	1	5	0	1	2	35%	3	75%
Operator/Data Error	0	0	0	0	0	0	0	0	0	0	0	0	0	0%	0	0%
Exposure	0	0	0	0	0	0	0	0	0	0	1	1	0	4%	0	0%
Equipment Malfunction	0	0	0	0	0	0	0	1	0	0	4	1	1	12%	0	0%
ACS Expired	0	0	0	0	0	0	0	0	0	0	0	0	0	0%	0	0%
Total:	5	0	4	2	6	1	3	5	3	9	7	3	4	100%	4	100%
Summary Metrics																
Daily Average Vehicle Passes	9,678	10,415	9,470	9,889	9,417	9,570	8,937	8,553	8,767	9,340	8,668	6,999	Year to Date Average		2010 Average	
Average Issued Speed	15	17	18	18	19	16	34	20	20	24	19	20	9,142		9,871	
Average Issued Red	7.5	7.2	7.7	8.2	7.1	7.0	7.7	7.3	6.9	7.1	7.4	7.6	7.4		9.0	
Citation / Violation Issuance	33%	69%	37%	16%	41%	47%	8%	10%	11%	31%	31%	33%	31%		39%	
Controllable Issuance Rate	71%	100%	71%	67%	60%	89%	25%	29%	40%	47%	42%	67%	59%		60%	



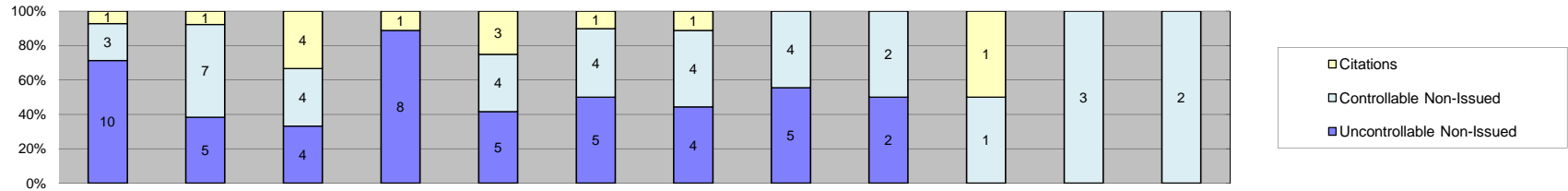
Events	Jan-11	Feb-11	Mar-11	Apr-11	May-11	Jun-11	Jul-11	Aug-11	Sep-11	Oct-11	Nov-11	Dec-11	Year to Date Average		2010 Average	
													Quantity	%	Quantity	%
Non-Violations	6	2	1	9	1	5	2	2	2	2	10	9	4	22%	4	17%
Violations	15	6	20	12	21	13	10	9	17	15	15	25	15	78%	19	83%
Total:	21	8	21	21	22	18	12	11	19	17	25	34	19	100%	23	100%
Violations																
Uncontrollable Non-Issued	4	0	9	10	9	5	6	7	11	7	9	13	8	51%	8	44%
Controllable Non-Issued	5	0	4	2	6	5	4	1	1	4	1	7	3	22%	5	28%
Citations	6	6	7	0	6	3	0	1	5	4	5	5	4	27%	5	28%
Total:	15	6	20	12	21	13	10	9	17	15	15	25	15	100%	18	100%
Non-Violations																
Rear Axle Violation	0	0	0	0	0	0	0	0	0	0	0	0	0	0%	0	0%
Gate Down - No Train	0	0	0	4	1	1	1	0	0	0	1	0	1	16%	3	75%
Train Activation	0	0	0	0	0	0	0	0	0	0	0	0	0	0%	0	0%
Emergency Vehicle	1	1	0	0	0	2	1	2	0	0	2	0	1	18%	0	0%
Right Turn	0	0	0	0	0	0	0	0	0	0	0	0	0	0%	0	0%
No Violation Occurred	5	1	1	5	0	2	0	0	2	2	7	9	3	67%	1	25%
Total:	6	2	1	9	1	5	2	2	2	2	10	9	4	100%	4	100%
Uncontrollable Non-Issued Violations																
No Plate	2	4	1	0	0	1	1	1	0	2	3	2	1	17%	1	11%
Out of State Plate	0	0	0	0	1	0	0	0	0	0	0	0	0	1%	0	0%
Glare on Plate	0	1	1	0	0	0	0	1	1	0	0	1	0	5%	2	22%
Illegible Plate	0	0	1	0	0	0	1	0	0	0	1	4	1	7%	1	11%
Plate Obstructed	0	1	0	0	0	0	0	0	0	0	1	0	0	2%	1	11%
Windshield Glare	0	0	2	2	1	3	2	1	3	2	0	0	1	16%	2	22%
Driver Obstructed	2	2	2	1	1	0	0	1	3	1	0	0	1	13%	0	0%
Car Obstructed	0	1	0	0	0	0	0	0	0	0	0	0	0	1%	0	0%
No DMV Match Found	0	2	2	1	3	1	2	2	2	2	3	5	2	25%	2	22%
LASD Expired	0	0	0	0	0	0	0	0	0	0	0	0	0	0%	0	0%
LASD Return	0	0	0	1	3	0	0	1	2	0	1	1	1	20%	0	0%
Other	0	0	0	5	0	0	0	0	0	0	0	0	0	5%	0	0%
Total:	4	0	9	10	9	5	6	7	11	7	9	13	8	100%	9	100%
Controllable Non-Issued Violations																
Framing of Plate	2	3	2	0	2	2	0	0	1	0	0	0	1	27%	2	40%
Focus / Clarity of Plate	2	0	0	0	0	0	0	0	0	0	0	0	0	5%	2	40%
Dark Interior	0	0	0	0	0	0	2	0	0	2	0	2	1	14%	0	0%
Framing of Driver	0	0	0	0	1	1	0	0	0	1	0	0	0	7%	0	0%
Focus / Clarity of Driver	0	0	0	0	0	0	1	0	0	0	0	0	0	2%	0	0%
Framing of Car	0	1	2	2	3	0	1	1	0	0	0	2	1	27%	1	20%
Operator/Data Error	0	0	0	0	0	0	0	0	0	0	0	0	0	0%	0	0%
Exposure	1	0	0	0	0	2	0	0	0	0	0	0	0	7%	0	0%
Equipment Malfunction	0	0	0	0	0	0	0	0	0	1	1	3	0	11%	0	0%
ACS Expired	0	0	0	0	0	0	0	0	0	0	0	0	0	0%	0	0%
Total:	5	0	4	2	6	5	4	1	1	4	1	7	4	100%	5	100%
Summary Metrics																
Daily Average Vehicle Passes	6,795	10,345	9,358	10,358	10,012	8,856	9,245	9,551	9,508	9,846	8,842	8,554	Year to Date Average		2010 Average	
Average Issued Speed	12	16	16	0	14	15	0	26	14	16	19	17	9,273		10,332	
Average Issued Red	6.7	6.4	6.8	0	6.2	6.3	0	6.7	6.5	5.9	6.3	6.5	6.4		11.0	
Citation / Violation Issuance	40%	100%	35%	0%	29%	23%	0%	11%	29%	27%	33%	20%	29%		28%	
Controllable Issuance Rate	55%	100%	64%	0%	50%	38%	0%	50%	83%	50%	83%	42%	51%		56%	



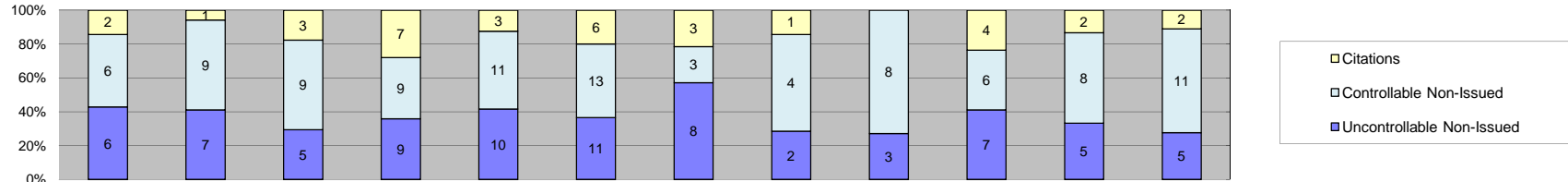
Events	Jan-11	Feb-11	Mar-11	Apr-11	May-11	Jun-11	Jul-11	Aug-11	Sep-11	Oct-11	Nov-11	Dec-11	Year to Date Average		2010 Average	
													Quantity	%	Quantity	%
Non-Violations	4	1	2	5	2	9	2	3	15	3	4	1	4	38%	3	17%
Violations	5	2	11	7	11	3	11	6	6	7	2	11	7	62%	15	83%
Total:	9	3	13	12	13	12	13	9	21	10	6	12	11	100%	18	100%
Violations																
Uncontrollable Non-Issued	2	0	2	3	3	2	7	4	4	3	0	5	3	43%	8	53%
Controllable Non-Issued	2	0	4	3	6	1	2	2	2	4	2	4	3	39%	4	27%
Citations	1	2	5	1	2	0	2	0	0	0	0	2	1	18%	3	20%
Total:	5	2	11	7	11	3	11	6	6	7	2	11	7	100%	15	100%
Non-Violations																
Rear Axle Violation	0	0	0	0	0	0	1	0	0	0	0	0	0	2%	0	0%
Gate Down - No Train	2	0	0	4	0	6	0	0	13	1	1	0	2	53%	1	33%
Train Activation	0	0	0	0	0	0	0	0	0	0	0	0	0	0%	0	0%
Emergency Vehicle	2	1	1	1	1	2	0	1	1	1	0	0	1	22%	1	33%
Right Turn	0	0	0	0	0	0	0	0	0	0	0	0	0	0%	0	0%
No Violation Occurred	0	0	1	0	1	1	1	2	1	1	3	1	1	24%	1	33%
Total:	4	1	2	5	2	9	2	3	15	3	4	1	4	100%	3	100%
Uncontrollable Non-Issued Violations																
No Plate	0	1	0	0	2	0	0	1	1	1	0	0	1	14%	1	20%
Out of State Plate	0	0	0	0	0	0	0	0	0	0	0	0	0	0%	0	0%
Glare on Plate	0	0	0	0	0	0	0	0	0	0	0	0	0	0%	0	0%
Illegible Plate	0	0	0	0	0	0	0	0	0	0	0	0	0	0%	0	0%
Plate Obstructed	0	0	0	1	0	0	0	0	0	0	0	0	0	2%	0	0%
Windshield Glare	0	0	1	1	1	1	5	2	2	0	0	0	1	30%	2	40%
Driver Obstructed	1	0	0	0	0	0	0	0	0	0	0	0	0	2%	0	0%
Car Obstructed	0	0	0	0	0	0	0	0	0	0	0	0	0	0%	0	0%
No DMV Match Found	1	0	1	1	0	0	0	1	1	0	0	0	0	12%	0	0%
LASD Expired	0	0	0	0	0	0	0	0	0	0	0	0	0	0%	0	0%
LASD Return	0	0	0	0	0	1	2	0	0	2	0	5	1	30%	0	0%
Other	0	7	0	0	0	0	0	0	0	0	0	0	1	16%	2	40%
Total:	2	0	2	3	3	2	7	4	4	3	0	5	4	100%	5	100%
Controllable Non-Issued Violations																
Framing of Plate	0	0	0	0	0	0	0	0	0	0	0	0	0	0%	0	0%
Focus / Clarity of Plate	0	0	0	0	0	0	0	0	0	0	0	0	0	0%	0	0%
Dark Interior	0	0	0	3	0	0	0	2	1	3	1	2	1	36%	2	50%
Framing of Driver	0	0	1	0	0	0	0	0	1	0	0	0	0	6%	0	0%
Focus / Clarity of Driver	0	0	0	0	0	0	0	0	0	1	0	0	0	3%	0	0%
Framing of Car	2	1	3	0	6	1	2	0	0	0	1	2	2	55%	2	50%
Operator/Data Error	0	0	0	0	0	0	0	0	0	0	0	0	0	0%	0	0%
Exposure	0	0	0	0	0	0	0	0	0	0	0	0	0	0%	0	0%
Equipment Malfunction	0	0	0	0	0	0	0	0	0	0	0	0	0	0%	0	0%
ACS Expired	0	0	0	0	0	0	0	0	0	0	0	0	0	0%	0	0%
Total:	2	0	4	3	6	1	2	2	2	4	2	4	3	100%	4	100%
Summary Metrics																
Daily Average Vehicle Passes	6,198	6,635	6,255	6,236	6,242	6,370	6,041	6,064	6,075	6,122	6,124	5,510	Year to Date Average		2010 Average	
Average Issued Speed	12	15	13	15	11	0	17	0	0	0	0	14	6,156	6,245		
Average Issued Red	9.6	37.1	8.9	7.9	53.8	0	8.2	0	0	0	0	33.3	22.7	12.4		
Citation / Violation Issuance	20%	100%	45%	14%	18%	0%	18%	0%	0%	0%	0%	18%	20%	20%		
Controllable Issuance Rate	33%	100%	56%	25%	25%	0%	50%	0%	0%	0%	0%	33%	27%	30%		



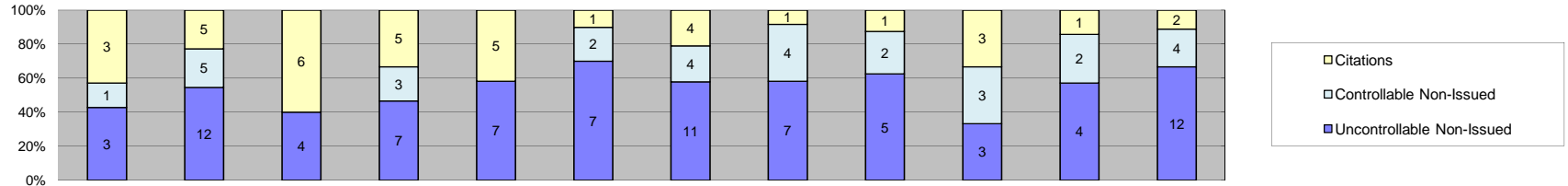
Events	2011												Year to Date Average		2010 Average	
	Jan-11	Feb-11	Mar-11	Apr-11	May-11	Jun-11	Jul-11	Aug-11	Sep-11	Oct-11	Nov-11	Dec-11	Quantity	%	Quantity	%
Non-Violations	16	5	15	25	29	21	18	24	17	6	4	11	16	33%	15	26%
Violations	33	34	37	42	27	43	33	27	28	35	14	33	32	67%	43	74%
Total:	49	39	52	67	56	64	51	51	45	41	18	44	48	100%	58	100%
Violations																
Uncontrollable Non-Issued	17	26	18	19	10	21	21	14	10	18	5	22	17	52%	20	45%
Controllable Non-Issued	7	0	10	12	8	11	7	10	12	10	7	6	8	26%	13	30%
Citations	9	8	9	11	9	11	5	3	6	7	2	5	7	22%	11	25%
Total:	33	34	37	42	27	43	33	27	28	35	14	33	32	100%	44	100%
Non-Violations																
Rear Axle Violation	0	0	0	0	0	0	0	0	0	0	0	0	0	0%	0	0%
Gate Down - No Train	2	0	0	6	0	2	3	2	8	0	1	0	2	13%	2	12%
Train Activation	6	4	13	15	20	12	12	13	4	0	0	5	9	54%	7	41%
Emergency Vehicle	1	0	0	0	1	2	0	2	2	2	0	0	1	5%	1	6%
Right Turn	0	0	0	0	0	0	0	0	0	0	0	0	0	0%	0	0%
No Violation Occurred	7	1	2	4	8	5	3	7	3	4	3	6	4	28%	7	41%
Total:	16	5	15	25	29	21	18	24	17	6	4	11	16	100%	17	100%
Uncontrollable Non-Issued Violations																
No Plate	2	0	1	7	0	2	2	0	3	2	0	3	2	11%	3	16%
Out of State Plate	0	1	0	0	0	0	0	0	0	0	0	0	0	0%	0	0%
Glare on Plate	0	0	0	0	0	0	0	0	0	0	0	0	0	0%	0	0%
Illegible Plate	1	1	0	0	1	0	0	0	1	0	0	0	0	2%	0	0%
Plate Obstructed	2	2	1	1	0	0	0	0	0	1	0	1	1	4%	2	11%
Windshield Glare	5	7	10	8	5	14	10	7	4	9	2	2	7	41%	8	42%
Driver Obstructed	1	0	1	0	0	0	0	0	0	1	0	0	0	1%	0	0%
Car Obstructed	1	2	3	0	1	0	1	1	0	0	1	4	1	7%	0	0%
No DMV Match Found	4	3	2	2	1	2	2	4	0	2	1	4	2	13%	3	16%
LASD Expired	0	0	0	0	0	0	0	0	0	0	0	0	0	0%	0	0%
LASD Return	1	4	0	1	2	3	6	2	2	3	1	8	3	28%	1	5%
Other	0	6	0	0	0	0	0	0	0	0	0	0	1	3%	2	11%
Total:	17	26	18	19	10	21	21	14	10	18	5	22	17	100%	19	100%
Controllable Non-Issued Violations																
Framing of Plate	2	1	1	1	2	0	0	0	3	2	0	0	1	10%	3	25%
Focus / Clarity of Plate	1	0	1	0	0	1	0	0	0	0	0	0	0	3%	0	0%
Dark Interior	1	3	1	0	2	0	2	3	4	0	0	2	2	15%	2	17%
Framing of Driver	0	0	1	4	1	1	1	0	0	1	1	1	1	9%	1	8%
Focus / Clarity of Driver	0	0	0	1	0	0	0	0	0	1	0	2	0	3%	0	0%
Framing of Car	3	13	4	6	3	3	4	7	5	5	6	0	5	50%	6	50%
Operator/Data Error	0	0	0	0	0	0	0	0	0	0	0	0	0	0%	0	0%
Exposure	0	1	0	0	0	3	0	0	0	1	0	0	0	4%	0	0%
Equipment Malfunction	0	0	2	0	0	3	0	0	0	0	0	1	1	5%	0	0%
ACS Expired	0	0	0	0	0	0	0	0	0	0	0	0	0	0%	0	0%
Total:	7	0	10	12	8	11	7	10	12	10	7	6	10	100%	12	100%
Summary Metrics																
Daily Average Vehicle Passes	6,436	6,132	6,319	6,705	6,567	6,495	6,114	6,041	5,891	6,371	6,311	6,175	Year to Date Average		2010 Average	
Average Issued Speed	10	10	9	9	11	9	9	9	8	11	9	7	6,296	6,357		
Average Issued Red	7.0	9.6	8.6	6.8	27.9	15.4	7.1	15.3	22.5	7.2	53.9	14.1	16.3	9.4		
Citation / Violation Issuance	27%	24%	24%	26%	33%	26%	15%	11%	21%	20%	14%	15%	21%	25%		
Controllable Issuance Rate	56%	100%	47%	48%	53%	50%	42%	23%	33%	41%	22%	45%	47%	44%		



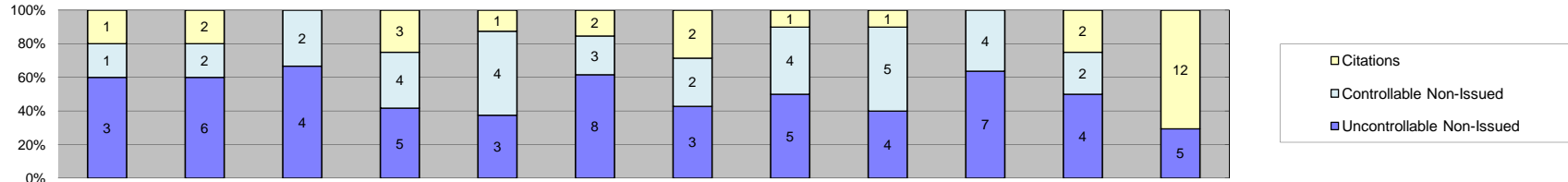
Events	Jan-11	Feb-11	Mar-11	Apr-11	May-11	Jun-11	Jul-11	Aug-11	Sep-11	Oct-11	Nov-11	Dec-11	Year to Date Average		2010 Average	
													Quantity	%	Quantity	%
Non-Violations	1	0	1	4	2	0	0	1	0	3	0	0	1	11%	1	11%
Violations	14	13	12	9	12	10	9	9	4	2	3	2	8	89%	8	89%
Total:	15	13	13	13	14	10	9	10	4	5	3	2	9	100%	9	100%
Violations																
Uncontrollable Non-Issued	10	5	4	8	5	5	4	5	2	0	0	0	4	48%	3	38%
Controllable Non-Issued	3	7	4	0	4	4	4	4	2	1	3	2	3	38%	4	50%
Citations	1	1	4	1	3	1	1	0	0	1	0	0	1	13%	1	13%
Total:	14	13	12	9	12	10	9	9	4	2	3	2	8	100%	8	100%
Non-Violations																
Rear Axle Violation	0	0	0	0	0	0	0	1	0	0	0	0	0	8%	0	0%
Gate Down - No Train	0	0	0	4	1	0	0	0	0	3	0	0	1	67%	1	100%
Train Activation	0	0	0	0	0	0	0	0	0	0	0	0	0	0%	0	0%
Emergency Vehicle	1	0	0	0	1	0	0	0	0	0	0	0	0	17%	0	0%
Right Turn	0	0	0	0	0	0	0	0	0	0	0	0	0	0%	0	0%
No Violation Occurred	0	0	1	0	0	0	0	0	0	0	0	0	0	8%	0	0%
Total:	1	0	1	4	2	0	0	1	0	3	0	0	1	100%	1	100%
Uncontrollable Non-Issued Violations																
No Plate	0	0	1	0	0	0	0	1	0	0	0	0	0	4%	0	0%
Out of State Plate	0	0	0	0	0	0	0	0	0	0	0	0	0	0%	0	0%
Glare on Plate	0	0	0	0	0	0	0	0	0	0	0	0	0	0%	0	0%
Illegible Plate	0	0	0	0	0	0	0	0	0	0	0	0	0	0%	0	0%
Plate Obstructed	1	0	0	0	0	0	0	0	0	0	0	0	0	2%	0	0%
Windshield Glare	5	3	1	5	2	5	2	3	2	0	0	0	2	58%	2	100%
Driver Obstructed	0	0	0	0	0	0	1	0	0	0	0	0	0	2%	0	0%
Car Obstructed	0	0	0	0	0	0	1	1	0	0	0	0	0	4%	0	0%
No DMV Match Found	4	1	2	2	1	0	0	0	0	0	0	0	1	21%	0	0%
LASD Expired	0	0	0	0	0	0	0	0	0	0	0	0	0	0%	0	0%
LASD Return	0	0	0	1	2	0	0	0	0	0	0	0	0	8%	0	0%
Other	0	1	0	0	0	0	0	0	0	0	0	0	0	2%	0	0%
Total:	10	5	4	8	5	5	4	5	2	0	0	0	4	100%	2	100%
Controllable Non-Issued Violations																
Framing of Plate	0	0	0	0	0	0	0	0	0	0	0	0	0	0%	0	0%
Focus / Clarity of Plate	0	0	0	0	0	0	0	0	0	0	0	0	0	0%	0	0%
Dark Interior	0	1	2	0	0	1	0	0	1	0	3	0	1	21%	2	50%
Framing of Driver	0	0	0	0	0	0	1	1	1	0	0	0	0	8%	0	0%
Focus / Clarity of Driver	0	1	0	0	1	0	0	0	0	0	0	0	0	5%	0	0%
Framing of Car	3	5	2	0	3	2	3	2	0	1	0	0	2	55%	2	50%
Operator/Data Error	0	0	0	0	0	0	0	0	0	0	0	0	0	0%	0	0%
Exposure	0	0	0	0	0	1	0	0	0	0	0	0	0	3%	0	0%
Equipment Malfunction	0	0	0	0	0	0	0	1	0	0	0	2	0	8%	0	0%
ACS Expired	0	0	0	0	0	0	0	0	0	0	0	0	0	0%	0	0%
Total:	3	7	4	0	4	4	4	4	2	1	3	2	3	100%	4	100%
Summary Metrics																
Daily Average Vehicle Passes	1,935	2,113	2,025	2,128	2,167	2,058	1,938	2,073	2,085	2,143	2,031	2,023	Year to Date Average		2010 Average	
Average Issued Speed	18	15	9	20	16	17	16	0	0	12	0	0	2,060		3,052	
Average Issued Red	7.9	6.4	6.1	5.7	6.2	6.0	7.0	0	0	6.9	0	0	15		9	
Citation / Violation Issuance	7%	8%	33%	11%	25%	10%	11%	0%	0%	50%	0%	0%	6.5		3.6	
Controllable Issuance Rate	25%	13%	50%	100%	43%	20%	20%	0%	0%	50%	0%	0%	13%		13%	
													27%		17%	



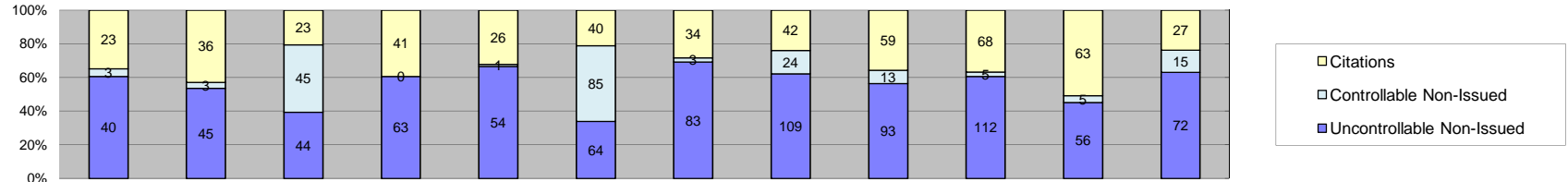
Events	Jan-11	Feb-11	Mar-11	Apr-11	May-11	Jun-11	Jul-11	Aug-11	Sep-11	Oct-11	Nov-11	Dec-11	Year to Date Average		2010 Average	
													Quantity	%	Quantity	%
Non-Violations	2	0	0	6	3	1	2	1	0	3	0	2	2	9%	1	8%
Violations	14	17	17	25	24	30	14	7	11	17	15	18	17	91%	11	92%
Total:	16	17	17	31	27	31	16	8	11	20	15	20	19	100%	12	100%
Violations																
Uncontrollable Non-Issued	6	7	5	9	10	11	8	2	3	7	5	5	7	37%	3	27%
Controllable Non-Issued	6	9	9	9	11	13	3	4	8	6	8	11	8	46%	5	45%
Citations	2	1	3	7	3	6	3	1	0	4	2	2	3	16%	3	27%
Total:	14	17	17	25	24	30	14	7	11	17	15	18	17	100%	11	100%
Non-Violations																
Rear Axle Violation	0	0	0	0	0	0	0	0	0	0	0	0	0	0%	0	0%
Gate Down - No Train	0	0	0	4	3	0	0	0	0	3	0	0	1	50%	1	50%
Train Activation	0	0	0	0	0	0	0	0	0	0	0	0	0	0%	0	0%
Emergency Vehicle	1	0	0	0	0	1	0	0	0	0	0	0	0	10%	0	0%
Right Turn	0	0	0	0	0	0	0	0	0	0	0	0	0	0%	0	0%
No Violation Occurred	1	0	0	2	0	0	2	1	0	0	0	2	1	40%	1	50%
Total:	2	0	0	6	3	1	2	1	0	3	0	2	2	100%	2	100%
Uncontrollable Non-Issued Violations																
No Plate	1	2	0	3	3	3	2	0	0	1	0	2	1	22%	1	33%
Out of State Plate	0	0	0	2	0	0	0	0	0	0	0	0	0	3%	0	0%
Glare on Plate	0	0	0	0	0	0	0	0	0	0	0	0	0	0%	0	0%
Illegible Plate	0	0	0	0	0	0	0	0	0	0	0	0	0	0%	0	0%
Plate Obstructed	0	0	0	0	1	0	0	0	0	0	1	0	0	3%	0	0%
Windshield Glare	0	0	1	2	3	1	4	0	2	2	0	0	1	19%	1	33%
Driver Obstructed	0	0	0	1	0	0	0	0	0	1	0	1	0	4%	0	0%
Car Obstructed	0	0	0	0	0	0	0	0	0	0	0	0	0	0%	0	0%
No DMV Match Found	3	5	4	1	3	4	2	1	0	2	3	2	3	38%	1	33%
LASD Expired	0	0	0	0	0	0	0	0	0	0	0	0	0	0%	0	0%
LASD Return	2	0	0	0	0	3	0	1	1	1	1	0	1	9%	0	0%
Other	0	0	0	0	0	0	0	0	0	0	0	0	0	0%	0	0%
Total:	6	7	5	9	10	11	8	2	3	7	5	5	7	100%	3	100%
Controllable Non-Issued Violations																
Framing of Plate	1	2	2	2	1	2	1	1	0	0	2	1	1	15%	1	20%
Focus / Clarity of Plate	0	0	0	0	0	1	0	0	0	0	0	1	0	2%	0	0%
Dark Interior	0	0	0	0	0	1	0	0	1	1	0	0	0	3%	0	0%
Framing of Driver	2	0	0	0	0	0	0	0	0	0	0	0	0	2%	0	0%
Focus / Clarity of Driver	0	0	0	1	0	0	0	0	0	0	0	0	0	1%	0	0%
Framing of Car	3	7	7	6	9	8	2	3	7	4	6	9	6	73%	4	80%
Operator/Data Error	0	0	0	0	0	1	0	0	0	0	0	0	0	1%	0	0%
Exposure	0	0	0	0	1	0	0	0	0	1	0	0	0	2%	0	0%
Equipment Malfunction	0	0	0	0	0	0	0	0	0	0	0	0	0	0%	0	0%
ACS Expired	0	0	0	0	0	0	0	0	0	0	0	0	0	0%	0	0%
Total:	6	9	9	9	11	13	3	4	8	6	8	11	8	100%	5	100%
Summary Metrics																
Daily Average Vehicle Passes	1,984	2,185	2,780	2,160	2,181	2,014	2,147	2,128	2,071	2,214	2,099	1,838	Year to Date Average		2010 Average	
Average Issued Speed	11	15	20	13	11	14	15	16	0	13	11	11	2,150		2,117	
Average Issued Red	5.6	5.7	6.5	32.6	6.1	5.8	5.4	5.6	0	5.9	5.8	52.6	12.5		20.8	
Citation / Violation Issuance	14%	6%	18%	28%	13%	20%	21%	14%	0%	24%	13%	11%	15%		27%	
Controllable Issuance Rate	25%	10%	25%	44%	21%	32%	50%	20%	0%	40%	20%	15%	25%		38%	



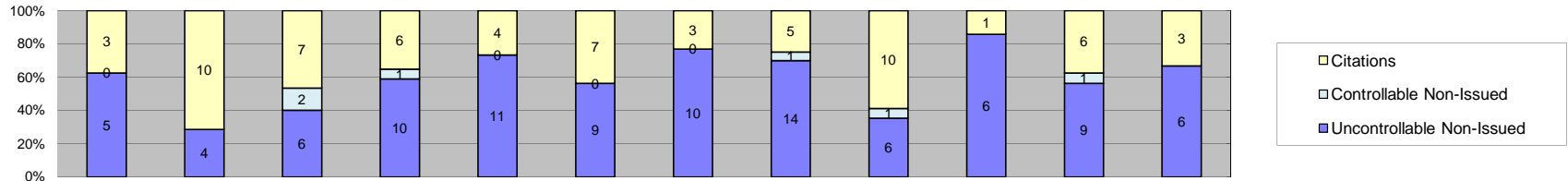
Events	Jan-11	Feb-11	Mar-11	Apr-11	May-11	Jun-11	Jul-11	Aug-11	Sep-11	Oct-11	Nov-11	Dec-11	Year to Date Average		2010 Average	
													Quantity	%	Quantity	%
Non-Violations	10	10	3	9	12	7	12	14	10	7	19	10	10	45%	7	33%
Violations	7	22	10	15	12	10	19	12	8	9	7	18	12	55%	14	67%
Total:	17	32	13	24	24	17	31	26	18	16	26	28	23	100%	21	100%
Violations																
Uncontrollable Non-Issued	3	12	4	7	7	7	11	7	5	3	4	12	7	55%	6	43%
Controllable Non-Issued	1	5	0	3	0	2	4	4	2	3	2	4	3	20%	2	14%
Citations	3	5	6	5	5	1	4	1	1	3	1	2	3	25%	6	43%
Total:	7	22	10	15	12	10	19	12	8	9	7	18	12	100%	14	100%
Non-Violations																
Rear Axle Violation	0	0	0	0	0	0	0	0	0	0	0	0	0	0%	0	0%
Gate Down - No Train	0	0	0	0	0	0	0	0	0	4	1	0	0	4%	1	17%
Train Activation	1	0	0	0	0	0	0	0	0	0	0	0	0	1%	0	0%
Emergency Vehicle	0	0	0	1	0	1	0	0	1	0	0	0	0	2%	0	0%
Right Turn	0	0	0	0	0	0	0	0	0	0	0	0	0	0%	0	0%
No Violation Occurred	9	10	3	8	12	6	12	14	9	3	18	10	10	93%	5	83%
Total:	10	10	3	9	12	7	12	14	10	7	19	10	10	100%	6	100%
Uncontrollable Non-Issued Violations																
No Plate	2	1	0	1	1	1	1	0	0	1	0	0	1	10%	1	25%
Out of State Plate	0	0	0	0	0	0	0	0	0	0	0	0	0	0%	0	0%
Glare on Plate	0	0	0	0	0	0	0	0	0	0	0	1	0	1%	0	0%
Illegible Plate	0	0	0	0	0	0	0	0	0	0	2	3	0	6%	0	0%
Plate Obstructed	0	0	0	1	0	0	1	0	0	0	2	1	0	6%	0	0%
Windshield Glare	0	1	4	2	3	4	5	3	5	0	0	4	3	38%	2	50%
Driver Obstructed	0	0	0	0	1	0	0	0	0	0	0	0	0	1%	0	0%
Car Obstructed	0	0	0	0	0	1	1	0	0	0	0	0	0	2%	0	0%
No DMV Match Found	1	4	0	3	2	1	1	1	0	0	0	1	1	17%	1	25%
LASD Expired	0	0	0	0	0	0	0	0	0	0	0	0	0	0%	0	0%
LASD Return	0	1	0	0	0	0	2	3	0	2	0	2	1	33%	0	0%
Other	0	5	0	0	0	0	0	0	0	0	0	0	0	6%	0	0%
Total:	3	12	4	7	7	7	11	7	5	3	4	12	7	100%	4	100%
Controllable Non-Issued Violations																
Framing of Plate	0	0	0	0	0	0	0	0	0	0	0	1	0	3%	0	0%
Focus / Clarity of Plate	0	0	0	0	0	0	0	0	0	0	0	1	0	3%	0	0%
Dark Interior	0	3	0	0	0	0	0	2	0	1	0	0	1	20%	0	0%
Framing of Driver	0	0	0	1	0	0	2	0	1	1	0	0	0	17%	0	0%
Focus / Clarity of Driver	0	0	0	0	0	0	0	0	0	0	1	1	0	7%	0	0%
Framing of Car	1	2	0	1	0	1	2	2	1	0	1	1	1	40%	1	100%
Operator/Data Error	0	0	0	0	0	0	0	0	0	0	0	0	0	0%	0	0%
Exposure	0	0	0	1	0	1	0	0	0	1	0	0	0	10%	0	0%
Equipment Malfunction	0	0	0	0	0	0	0	0	0	0	0	0	0	0%	0	0%
ACS Expired	0	0	0	0	0	0	0	0	0	0	0	0	0	0%	0	0%
Total:	1	5	0	3	0	2	4	4	2	3	2	4	3	100%	1	100%
Summary Metrics																
Daily Average Vehicle Passes	4,140	4,747	4,370	4,732	4,548	4,379	4,328	4,246	4,397	4,469	4,212	4,173	Year to Date Average		2010 Average	
Average Issued Speed	13	10	12	14	10	16	11	12	9	12	22	8	4,395	444		
Average Issued Red	6.7	7.0	6.7	7.1	7.1	6.7	7.7	6.7	6.2	6.9	6.3	53.2	12	12.1		
Citation / Violation Issuance	43%	23%	60%	33%	42%	10%	21%	8%	13%	33%	14%	11%	10.7	26%	43%	
Controllable Issuance Rate	75%	50%	100%	63%	100%	33%	50%	20%	33%	50%	33%	33%	53%	60%		



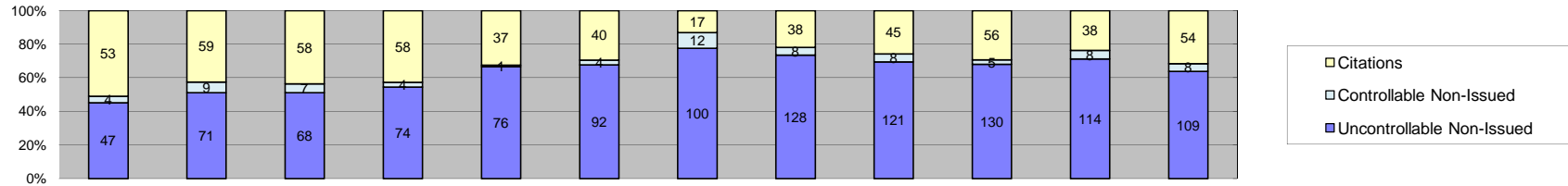
Events	Jan-11	Feb-11	Mar-11	Apr-11	May-11	Jun-11	Jul-11	Aug-11	Sep-11	Oct-11	Nov-11	Dec-11	Year to Date Average		2010 Average	
													Quantity	%	Quantity	%
Non-Violations	1	0	1	5	0	1	1	0	1	4	3	0	1	13%	2	22%
Violations	5	10	6	12	8	13	7	10	10	11	8	17	10	87%	7	78%
Total:	6	10	7	17	8	14	8	10	11	15	11	17	11	100%	9	100%
Violations																
Uncontrollable Non-Issued	3	6	4	5	3	8	3	5	4	7	4	5	5	49%	3	38%
Controllable Non-Issued	1	2	2	4	4	3	2	4	5	4	2	0	3	28%	3	38%
Citations	1	2	0	3	1	2	2	1	1	0	2	12	2	23%	2	25%
Total:	5	10	6	12	8	13	7	10	10	11	8	17	10	100%	8	100%
Non-Violations																
Rear Axle Violation	0	0	0	0	0	0	0	0	0	0	0	0	0	0%	0	0%
Gate Down - No Train	0	0	1	4	0	0	1	0	1	3	2	0	1	71%	1	50%
Train Activation	0	0	0	0	0	0	0	0	0	0	0	0	0	0%	0	0%
Emergency Vehicle	1	0	0	0	0	1	0	0	0	1	0	0	0	18%	0	0%
Right Turn	0	0	0	0	0	0	0	0	0	0	0	0	0	0%	0	0%
No Violation Occurred	0	0	0	1	0	0	0	0	0	0	1	0	0	12%	1	50%
Total:	1	0	1	5	0	1	1	0	1	4	3	0	1	100%	2	100%
Uncontrollable Non-Issued Violations																
No Plate	0	0	1	0	1	1	2	1	1	2	1	2	1	21%	1	33%
Out of State Plate	0	0	0	0	0	0	0	0	1	0	0	0	0	2%	0	0%
Glare on Plate	0	0	0	0	1	0	0	0	0	0	0	0	0	2%	0	0%
Illegible Plate	0	0	0	0	0	0	0	0	0	0	0	0	0	0%	0	0%
Plate Obstructed	0	0	0	0	0	2	1	0	0	0	0	0	0	5%	0	0%
Windshield Glare	1	1	2	4	1	2	0	2	0	1	2	0	1	28%	1	33%
Driver Obstructed	0	0	0	0	0	0	0	0	0	0	0	0	0	0%	0	0%
Car Obstructed	0	0	0	0	0	0	0	0	1	2	0	1	0	7%	0	0%
No DMV Match Found	2	1	1	0	0	2	0	1	1	2	1	0	1	19%	1	33%
LASD Expired	0	0	0	0	0	0	0	0	0	0	0	0	0	0%	0	0%
LASD Return	0	0	0	1	0	1	0	1	0	0	0	2	0	15%	0	0%
Other	0	4	0	0	0	0	0	0	0	0	0	0	0	7%	0	0%
Total:	3	6	4	5	3	8	3	5	4	7	4	5	5	100%	3	100%
Controllable Non-Issued Violations																
Framing of Plate	0	1	0	1	1	0	0	0	1	2	0	0	1	18%	1	50%
Focus / Clarity of Plate	0	0	0	0	0	0	0	1	0	0	0	0	0	3%	0	0%
Dark Interior	0	0	0	0	1	0	0	1	2	0	0	0	0	12%	0	0%
Framing of Driver	0	0	0	1	0	0	0	0	0	0	1	0	0	6%	0	0%
Focus / Clarity of Driver	0	0	0	0	1	0	0	0	0	0	0	0	0	3%	0	0%
Framing of Car	1	1	2	2	1	2	2	2	2	2	1	0	2	55%	1	50%
Operator/Data Error	0	0	0	0	0	0	0	0	0	0	0	0	0	0%	0	0%
Exposure	0	0	0	0	0	1	0	0	0	0	0	0	0	3%	0	0%
Equipment Malfunction	0	0	0	0	0	0	0	0	0	0	0	0	0	0%	0	0%
ACS Expired	0	0	0	0	0	0	0	0	0	0	0	0	0	0%	0	0%
Total:	1	2	2	4	4	3	2	4	5	4	2	0	3	100%	2	100%
Summary Metrics																
Daily Average Vehicle Passes	3,826	4,700	4,513	4,598	4,547	4,340	4,080	4,298	4,183	4,416	4,272	3,937	Year to Date Average		2010 Average	
Average Issued Speed	10	12	0	9	15	9	12	15	16	0	12	12	4,309	4,315		
Average Issued Red	99.9	6.4	0.0	38.5	6.9	6.4	53.1	7.5	6.8	0	7.1	55.5	26.2	4.6		
Citation / Violation Issuance	20%	20%	0%	25%	13%	15%	29%	10%	10%	0%	25%	71%	20%	25%		
Controllable Issuance Rate	50%	50%	0%	43%	20%	40%	50%	20%	17%	0%	50%	100%	37%	40%		



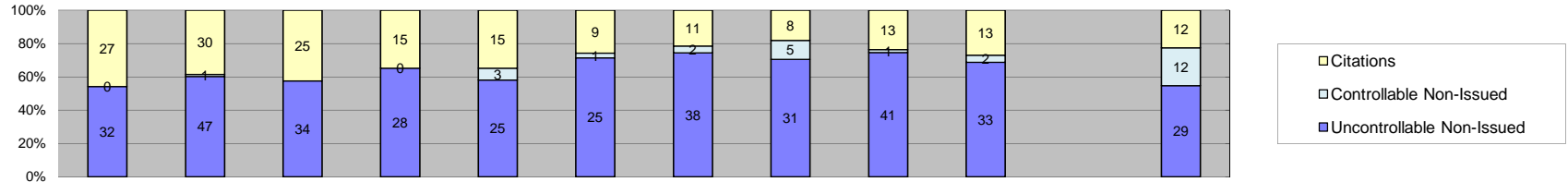
Events	Jan-11	Feb-11	Mar-11	Apr-11	May-11	Jun-11	Jul-11	Aug-11	Sep-11	Oct-11	Nov-11	Dec-11	Year to Date Average		2010 Average	
													Quantity	%	Quantity	%
Non-Violations	558	450	367	526	736	672	872	799	551	468	481	405	574	82%	585	83%
Violations	66	84	112	104	81	189	120	175	165	185	124	114	127	18%	121	17%
Total:	624	534	479	630	817	861	992	974	716	653	605	519	700	100%	706	100%
Violations																
Uncontrollable Non-Issued	40	45	44	63	54	64	83	109	93	112	56	72	70	55%	63	52%
Controllable Non-Issued	3	3	45	0	1	85	3	24	13	5	5	15	17	13%	12	10%
Citations	23	36	23	41	26	40	34	42	59	68	63	27	40	32%	46	38%
Total:	66	84	112	104	81	189	120	175	165	185	124	114	127	100%	121	100%
Non-Violations																
Rear Axle Violation	0	1	0	1	0	7	22	2	2	19	4	7	5	1%	1	0%
Gate Down - No Train	0	0	0	0	0	0	0	0	0	0	0	0	0	0%	0	0%
Train Activation	0	0	0	0	0	0	0	0	0	0	0	0	0	0%	1	0%
Emergency Vehicle	4	1	0	0	0	2	5	2	2	1	2	0	2	0%	1	0%
Right Turn	0	0	0	0	0	0	0	0	0	1	0	0	0	0%	0	0%
No Violation Occurred	554	448	367	525	736	663	845	795	547	447	475	398	567	99%	584	100%
Total:	558	450	367	526	736	672	872	799	551	468	481	405	574	100%	586	100%
Uncontrollable Non-Issued Violations																
No Plate	5	5	7	6	11	6	10	8	10	15	9	5	8	12%	13	7600%
Out of State Plate	3	3	0	1	1	3	1	5	1	4	2	1	2	3%	2	1000%
Glare on Plate	0	0	0	0	1	0	0	0	3	0	0	1	0	1%	0	109%
Illegible Plate	1	1	0	0	0	0	0	0	1	1	1	3	1	1%	1	873%
Plate Obstructed	1	1	3	1	1	0	1	6	4	7	6	4	3	4%	4	2600%
Windshield Glare	12	6	8	12	13	16	19	11	22	25	12	13	14	20%	18	10550%
Driver Obstructed	3	4	2	3	2	4	3	2	2	5	2	3	3	4%	3	1950%
Car Obstructed	7	6	7	15	11	20	21	15	12	13	14	13	13	18%	11	6500%
No DMV Match Found	6	11	9	11	5	6	11	11	12	16	6	8	9	13%	1	750%
LASD Expired	0	0	0	0	0	0	0	0	1	0	0	0	0	0%	8	4900%
LASD Return	1	3	4	14	9	9	17	17	24	26	4	21	12	74%	5	3100%
Other	1	5	4	0	0	0	0	34	1	0	0	0	4	5%	1	850%
Total:	40	45	44	63	54	64	83	109	93	112	56	72	70	100%	0	100%
Controllable Non-Issued Violations																
Framing of Plate	1	2	2	0	0	1	2	1	2	1	0	1	1	6%	2	25%
Focus / Clarity of Plate	1	0	0	0	0	1	0	0	2	0	2	0	1	3%	1	9%
Dark Interior	0	0	4	0	1	0	0	0	6	1	2	5	2	9%	2	30%
Framing of Driver	0	0	0	0	0	0	0	0	0	2	1	0	0	1%	0	4%
Focus / Clarity of Driver	0	0	0	0	0	0	0	0	0	1	0	0	0	0%	0	5%
Framing of Car	0	0	0	0	0	0	0	0	3	0	0	0	0	1%	0	7%
Operator/Data Error	1	0	0	0	0	83	0	0	0	0	0	0	7	42%	0	0%
Exposure	0	1	0	0	0	0	0	12	0	0	0	0	1	6%	1	13%
Equipment Malfunction	0	0	39	0	0	0	0	11	0	0	0	9	5	29%	0	5%
ACS Expired	0	0	0	0	0	0	1	0	0	0	0	0	0	0%	0	1%
Total:	3	3	45	0	1	85	3	24	13	5	5	15	17	100%	7	100%
Summary Metrics																
Daily Average Vehicle Passed	855	996	844	904	872	931	952	1,005	1,021	1,170	1,075	1,041	Year to Date Average		2010 Average	
Average Issued Speed	18	18	18	18	17	18	18	17	17	18	18	18	972		11,619	
Average Issued Red	7.2	0.6	2.8	6.1	3.8	14.1	6.3	5.2	5.1	1.2	3.1	7.8	5.3		5.6	
Citation / Violation Issuance	35%	43%	21%	39%	32%	21%	28%	24%	36%	37%	51%	24%	33%		38%	
Controllable Issuance Rate	88%	92%	34%	100%	96%	32%	92%	64%	82%	93%	93%	64%	78%		38%	



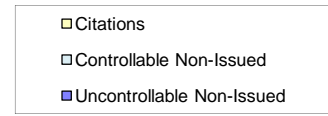
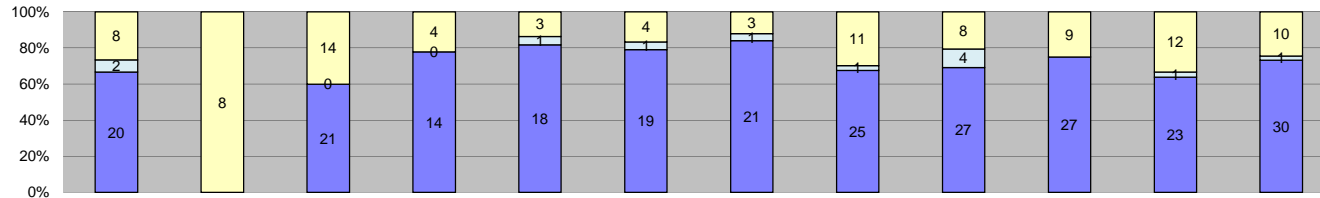
Events	Jan-11	Feb-11	Mar-11	Apr-11	May-11	Jun-11	Jul-11	Aug-11	Sep-11	Oct-11	Nov-11	Dec-11	Year to Date Average		2010 Average	
													Quantity	%	Quantity	%
Non-Violations	159	132	147	158	178	153	180	238	133	126	108	131	154	92%	193	89%
Violations	8	14	15	17	15	16	13	20	17	7	16	9	14	8%	23	11%
Total:	167	146	162	175	193	169	193	258	150	133	124	140	168	100%	216	100%
Violations																
Uncontrollable Non-Issued	5	4	6	10	11	9	10	14	6	6	9	6	8	57%	12	53%
Controllable Non-Issued	0	0	2	1	0	0	0	1	1	0	1	0	1	4%	3	13%
Citations	3	10	7	6	4	7	3	5	10	1	6	3	5	39%	8	34%
Total:	8	14	15	17	15	16	13	20	17	7	16	9	14	100%	23	100%
Non-Violations																
Rear Axle Violation	0	0	0	0	0	0	0	0	0	0	0	1	0	0%	0	0%
Gate Down - No Train	0	0	0	0	0	0	0	0	0	0	0	0	0	0%	0	0%
Train Activation	0	0	0	0	0	0	0	0	0	0	0	0	0	0%	0	0%
Emergency Vehicle	0	1	0	1	2	2	2	2	0	0	1	2	1	1%	1	1%
Right Turn	0	0	0	0	0	0	0	0	0	0	0	0	0	0%	0	0%
No Violation Occurred	159	131	147	157	176	151	178	236	133	126	107	128	152	99%	193	99%
Total:	159	132	147	158	178	153	180	238	133	126	108	131	154	100%	194	100%
Uncontrollable Non-Issued Violations																
No Plate	0	0	1	2	1	1	2	2	0	0	0	1	1	10%	2	15%
Out of State Plate	0	0	0	0	1	0	0	1	0	0	0	0	0	2%	0	1%
Glare on Plate	0	0	0	0	0	0	0	0	0	0	0	0	0	0%	0	0%
Illegible Plate	0	0	0	0	0	0	0	0	0	0	0	0	0	0%	0	0%
Plate Obstructed	0	0	0	0	0	1	0	0	0	0	0	0	0	1%	0	0%
Windshield Glare	0	0	0	3	4	1	0	1	0	0	0	1	1	10%	1	12%
Driver Obstructed	0	0	1	0	0	2	0	1	0	0	0	0	0	4%	2	13%
Car Obstructed	2	1	2	3	2	3	5	3	2	3	5	3	3	35%	3	24%
No DMV Match Found	2	2	2	2	1	0	1	4	1	0	2	0	1	18%	3	26%
LASD Expired	0	0	0	0	0	0	0	1	0	0	0	0	0	1%	0	0%
LASD Return	1	0	0	0	2	1	2	1	3	3	2	1	1	267%	1	10%
Other	0	1	0	0	0	0	0	0	0	0	0	0	0	1%	0	0%
Total:	5	4	6	10	11	9	10	14	6	6	9	6	8	100%	12	100%
Controllable Non-Issued Violations																
Framing of Plate	0	0	0	0	0	0	0	0	0	0	0	0	0	0%	0	0%
Focus / Clarity of Plate	0	0	0	0	0	0	0	0	0	0	0	0	0	0%	0	0%
Dark Interior	0	0	1	0	0	0	0	1	1	0	0	0	0	50%	1	70%
Framing of Driver	0	0	1	0	0	0	0	0	0	0	0	0	0	17%	0	13%
Focus / Clarity of Driver	0	0	0	0	0	0	0	0	0	0	0	0	0	0%	0	4%
Framing of Car	0	0	0	0	0	0	0	0	0	0	0	0	0	0%	0	0%
Operator/Data Error	0	0	0	0	0	0	0	0	0	0	0	0	0	0%	0	0%
Exposure	0	0	0	1	0	0	0	0	0	0	1	0	0	33%	0	4%
Equipment Malfunction	0	0	0	0	0	0	0	0	0	0	0	0	0	0%	0	4%
ACS Expired	0	0	0	0	0	0	0	0	0	0	0	0	0	0%	0	4%
Total:	0	0	2	1	0	0	0	1	1	0	1	0	1	100%	2	100%
Summary Metrics																
Daily Average Vehicle Passes	256	297	285	263	259	279	214	232	378	275	236	197	Year to Date Average		2010 Average	
Average Issued Speed	21	17	19	17	21	18	19	18	22	23	21	20	264		256	
Average Issued Red	9.6	10.5	5.8	8.7	12.8	25.6	34.0	40.2	10.3	0.3	17.1	0.2	14.6		17.7	
Citation / Violation Issuance	38%	71%	47%	35%	27%	44%	23%	25%	59%	14%	38%	33%	38%		34%	
Controllable Issuance Rate	100%	100%	78%	86%	100%	100%	100%	83%	91%	100%	86%	100%	94%		71%	



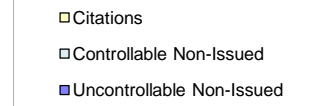
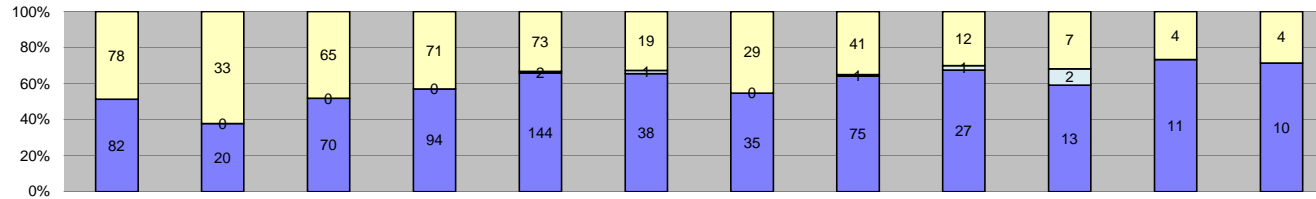
Events	Jan-11	Feb-11	Mar-11	Apr-11	May-11	Jun-11	Jul-11	Aug-11	Sep-11	Oct-11	Nov-11	Dec-11	Year to Date Average		2010 Average	
													Quantity	%	Quantity	%
Non-Violations	309	275	245	248	234	259	247	255	224	277	246	321	262	64%	367	74%
Violations	104	139	133	136	114	136	129	174	174	191	160	171	147	36%	129	26%
Total:	413	414	378	384	348	395	376	429	398	468	406	492	408	100%	496	100%
Violations																
Uncontrollable Non-Issued	47	71	68	74	76	92	100	128	121	130	114	109	94	64%	61	47%
Controllable Non-Issued	4	9	7	4	1	4	12	8	8	5	8	8	7	4%	11	9%
Citations	53	59	58	58	37	40	17	38	45	56	38	54	46	31%	56	44%
Total:	104	139	133	136	114	136	129	174	174	191	160	171	147	100%	129	100%
Non-Violations																
Rear Axle Violation	4	3	1	3	3	2	1	1	3	5	0	2	2	1%	1	0%
Gate Down - No Train	0	0	0	0	0	0	0	0	0	0	0	0	0	0%	0	0%
Train Activation	0	0	0	0	0	0	0	0	0	0	0	0	0	0%	1	0%
Emergency Vehicle	3	5	2	2	2	4	9	2	5	2	7	4	4	1%	3	1%
Right Turn	0	0	0	0	0	0	0	0	0	0	0	0	0	0%	0	0%
No Violation Occurred	302	267	242	243	229	253	237	252	216	270	239	315	255	98%	366	99%
Total:	309	275	245	248	234	259	247	255	224	277	246	321	262	100%	370	100%
Uncontrollable Non-Issued Violations																
No Plate	7	13	9	13	10	12	13	15	12	8	17	12	12	12%	10	1933%
Out of State Plate	1	1	1	0	3	5	1	2	3	3	5	1	2	2%	2	400%
Glare on Plate	0	0	1	0	0	0	0	0	0	0	0	0	0	0%	0	0%
Illegible Plate	0	0	0	0	0	0	0	2	0	0	0	1	0	0%	0	33%
Plate Obstructed	0	1	0	0	1	1	0	2	1	4	2	1	1	1%	1	133%
Windshield Glare	6	7	8	15	22	37	38	27	35	38	20	24	23	25%	10	1917%
Driver Obstructed	8	5	16	9	3	4	4	7	6	9	5	8	7	7%	4	833%
Car Obstructed	6	9	10	14	15	12	15	22	13	22	19	14	14	15%	18	3617%
No DMV Match Found	5	16	15	15	6	12	9	15	16	16	21	18	14	15%	3	500%
LASD Expired	0	1	0	0	0	0	0	0	0	0	0	1	0	0%	13	2533%
LASD Return	7	10	4	8	16	9	20	36	35	30	25	29	19	294%	7	1400%
Other	7	8	4	0	0	0	0	0	0	0	0	0	2	2%	1	217%
Total:	47	71	68	74	76	92	100	128	121	130	114	109	94	100%	1	100%
Controllable Non-Issued Violations																
Framing of Plate	0	1	1	0	0	0	0	0	0	0	0	0	0	3%	0	10%
Focus / Clarity of Plate	0	0	0	0	0	0	0	0	1	0	0	0	0	1%	0	0%
Dark Interior	0	2	0	0	0	1	4	3	3	2	4	2	2	27%	1	21%
Framing of Driver	3	1	5	2	1	2	6	3	4	3	3	5	3	49%	2	42%
Focus / Clarity of Driver	0	0	0	2	0	0	0	0	0	0	0	0	0	3%	0	0%
Framing of Car	0	5	0	0	0	0	1	2	0	0	1	1	1	13%	0	8%
Operator/Data Error	0	0	0	0	0	0	0	0	0	0	0	0	0	0%	0	2%
Exposure	1	0	1	0	0	1	0	0	0	0	0	0	0	4%	0	2%
Equipment Malfunction	0	0	0	0	0	0	1	0	0	0	0	0	0	1%	1	13%
ACS Expired	0	0	0	0	0	0	0	0	0	0	0	0	0	0%	0	2%
Total:	4	9	7	4	1	4	12	8	8	5	8	8	7	100%	4	100%
Summary Metrics																
Daily Average Vehicle Passed	1,944	1,644	1,725	2,006	1,687	1,895	1,947	1,969	1,885	2,083	2,125	1,773	Year to Date Average		2010 Average	
Average Issued Speed	18	17	18	19	18	19	19	18	17	18	18	18	1,890		2,217	
Average Issued Red	3.0	1.6	6.3	3.0	2.5	0.5	0.5	3.7	1.4	1.1	3.1	2.5	2.4		8.0	
Citation / Violation Issuance	51%	42%	44%	43%	32%	29%	13%	22%	26%	29%	24%	32%	32%		44%	
Controllable Issuance Rate	93%	87%	89%	94%	97%	91%	59%	83%	85%	92%	83%	87%	87%		44%	



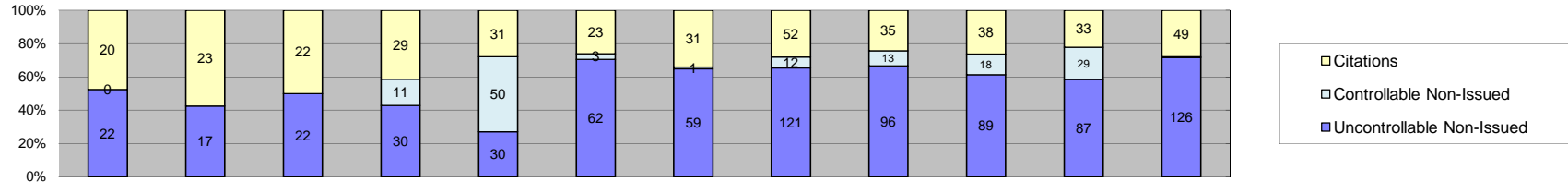
Events	Jan-11	Feb-11	Mar-11	Apr-11	May-11	Jun-11	Jul-11	Aug-11	Sep-11	Oct-11	Nov-11	Dec-11	Year to Date Average		2010 Average	
													Quantity	%	Quantity	%
Non-Violations	394	780	564	448	472	545	505	631	647	609	0	391	499	91%	465	90%
Violations	59	78	59	43	43	35	51	44	55	48	0	53	47	9%	52	10%
Total:	453	858	623	491	515	580	556	675	702	657	0	444	546	100%	517	100%
Violations																
Uncontrollable Non-Issued	32	47	34	28	25	25	38	31	41	33	0	29	30	64%	31	59%
Controllable Non-Issued	0	1	0	0	3	1	2	5	1	2	0	12	2	5%	3	5%
Citations	27	30	25	15	15	9	11	8	13	13	0	12	15	31%	18	35%
Total:	59	78	59	43	43	35	51	44	55	48	0	53	47	100%	52	100%
Non-Violations																
Rear Axle Violation	0	0	0	0	0	0	0	0	0	0	0	0	0	0%	0	0%
Gate Down - No Train	0	0	0	0	0	0	0	0	0	0	0	0	0	0%	0	0%
Train Activation	0	0	0	0	0	0	0	0	0	0	0	0	0	0%	1	0%
Emergency Vehicle	8	7	2	4	4	2	3	7	7	0	0	2	4	1%	4	1%
Right Turn	0	0	0	0	0	0	0	0	0	0	0	0	0	0%	0	0%
No Violation Occurred	386	773	562	444	468	543	502	624	640	609	0	389	495	99%	464	99%
Total:	394	780	564	448	472	545	505	631	647	609	0	391	499	100%	469	100%
Uncontrollable Non-Issued Violations																
No Plate	1	4	1	2	1	2	1	1	5	1	0	3	2	6%	3	10%
Out of State Plate	1	2	2	0	1	1	0	1	0	0	0	1	1	2%	1	3%
Glare on Plate	0	0	0	0	0	0	0	0	0	0	0	0	0	0%	0	0%
Illegible Plate	0	1	1	0	0	0	0	0	0	0	0	0	0	1%	0	0%
Plate Obstructed	0	0	0	0	1	0	0	0	0	0	0	0	0	0%	0	0%
Windshield Glare	1	1	5	3	4	1	3	4	3	2	0	4	3	9%	2	8%
Driver Obstructed	15	2	1	2	0	1	0	0	0	1	0	2	2	7%	2	5%
Car Obstructed	0	18	16	11	13	8	23	14	23	15	0	10	13	42%	12	39%
No DMV Match Found	7	16	4	4	4	8	6	7	4	8	0	1	6	19%	8	26%
LASD Expired	0	0	0	0	0	0	0	0	0	0	0	0	0	0%	0	0%
LASD Return	3	1	0	6	0	4	5	4	6	6	0	8	4	159%	2	7%
Other	4	2	4	0	1	0	0	0	0	0	0	0	1	3%	0	1%
Total:	32	47	34	28	25	25	38	31	41	33	0	29	30	100%	30	100%
Controllable Non-Issued Violations																
Framing of Plate	0	0	0	0	0	0	0	0	0	1	0	0	0	4%	0	11%
Focus / Clarity of Plate	0	0	0	0	0	0	0	0	0	0	0	0	0	0%	0	0%
Dark Interior	0	1	0	0	3	0	1	1	0	0	0	0	1	22%	0	33%
Framing of Driver	0	0	0	0	0	0	1	3	0	1	0	1	1	22%	0	11%
Focus / Clarity of Driver	0	0	0	0	0	0	0	1	0	0	0	0	0	4%	0	0%
Framing of Car	0	0	0	0	0	0	0	0	1	0	0	0	0	4%	0	11%
Operator/Data Error	0	0	0	0	0	0	0	0	0	0	0	0	0	0%	0	0%
Exposure	0	0	0	0	0	1	0	0	0	0	0	1	0	7%	0	22%
Equipment Malfunction	0	0	0	0	0	0	0	0	0	0	0	10	1	37%	0	0%
ACS Expired	0	0	0	0	0	0	0	0	0	0	0	0	0	0%	0	11%
Total:	0	1	0	0	3	1	2	5	1	2	0	12	2	100%	1	100%
Summary Metrics																
Daily Average Vehicle Passes	1,978	1,489	1,216	1,298	1,207	1,214	1,174	1,308	1,159	1,174	1,350	1,269	Year to Date Average		2010 Average	
Average Issued Speed	19	19	18	20	18	19	18	19	20	18	0	20	1,320		11,520	
Average Issued Red	4.0	0.6	8.2	13.6	0.6	0.5	6.2	0.4	0.4	11.2	0	0.3	4.2		6.5	
Citation / Violation Issuance	46%	38%	42%	35%	35%	26%	22%	18%	24%	27%	0%	23%	30%		35%	
Controllable Issuance Rate	100%	97%	100%	100%	83%	90%	85%	62%	93%	87%	0%	50%	86%		81%	



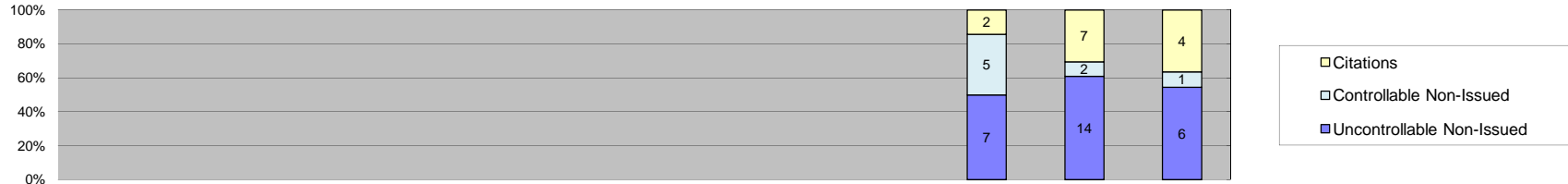
Events	Jan-11	Feb-11	Mar-11	Apr-11	May-11	Jun-11	Jul-11	Aug-11	Sep-11	Oct-11	Nov-11	Dec-11	Year to Date Average		2010 Average	
													Quantity	%	Quantity	%
Non-Violations	381	294	373	293	236	310	339	333	343	420	319	333	331	92%	363	89%
Violations	30	8	35	18	22	24	25	37	39	36	36	41	29	8%	45	11%
Total:	411	302	408	311	258	334	364	370	382	456	355	374	360	100%	408	100%
Violations																
Uncontrollable Non-Issued	20	0	21	14	18	19	21	25	27	27	23	30	20	70%	25	56%
Controllable Non-Issued	2	0	0	0	1	1	1	1	4	0	1	1	1	3%	2	4%
Citations	8	8	14	4	3	4	3	11	8	9	12	10	8	27%	18	40%
Total:	30	8	35	18	22	24	25	37	39	36	36	41	29	100%	45	100%
Non-Violations																
Rear Axle Violation	0	0	0	0	0	1	1	6	1	0	1	0	1	0%	0	0%
Gate Down - No Train	0	0	0	0	0	0	0	0	0	0	0	0	0	0%	0	0%
Train Activation	0	0	0	0	0	0	0	0	0	0	0	0	0	0%	0	0%
Emergency Vehicle	0	0	4	2	2	2	2	1	0	2	1	0	1	0%	3	1%
Right Turn	0	0	0	0	0	0	0	0	0	0	0	0	0	0%	0	0%
No Violation Occurred	381	294	369	291	234	307	336	326	342	418	317	333	329	99%	362	99%
Total:	381	294	373	293	236	310	339	333	343	420	319	333	331	100%	365	100%
Uncontrollable Non-Issued Violations																
No Plate	2	4	2	0	1	3	1	3	2	2	6	2	2	10%	3	13%
Out of State Plate	2	1	0	1	1	0	0	1	0	3	0	0	1	3%	0	1%
Glare on Plate	0	0	0	0	0	0	0	0	0	0	0	0	0	0%	0	1%
Illegible Plate	0	0	0	0	0	0	0	0	0	0	0	0	0	0%	0	1%
Plate Obstructed	1	0	0	0	1	0	2	1	0	0	1	0	1	2%	1	4%
Windshield Glare	1	4	3	4	2	4	2	5	5	3	0	4	3	14%	2	8%
Driver Obstructed	1	3	2	0	2	0	1	2	0	2	0	1	1	5%	3	15%
Car Obstructed	8	9	6	5	9	8	9	8	13	10	11	10	9	39%	9	37%
No DMV Match Found	2	4	4	3	1	4	4	1	3	3	2	3	3	13%	4	16%
LASD Expired	0	0	0	0	0	0	0	0	0	0	0	2	0	1%	0	1%
LASD Return	2	0	2	1	1	0	2	4	4	4	3	8	3	258%	1	3%
Other	1	0	2	0	0	0	0	0	0	0	0	0	0	1%	0	0%
Total:	20	0	21	14	18	19	21	25	27	27	23	30	23	100%	23	100%
Controllable Non-Issued Violations																
Framing of Plate	1	0	0	0	0	0	0	0	0	0	0	0	0	8%	1	40%
Focus / Clarity of Plate	1	0	0	0	0	0	0	0	1	0	0	0	0	17%	0	7%
Dark Interior	0	0	0	0	0	0	1	0	2	0	0	0	0	25%	0	20%
Framing of Driver	0	0	0	0	0	0	0	1	0	0	0	0	0	8%	0	7%
Focus / Clarity of Driver	0	0	0	0	0	0	0	0	0	0	0	1	0	8%	0	13%
Framing of Car	0	0	0	0	0	0	0	0	0	0	1	0	0	8%	0	13%
Operator/Data Error	0	0	0	0	0	0	0	0	1	0	0	0	0	8%	0	0%
Exposure	0	0	0	0	1	1	0	0	0	0	0	0	0	17%	0	0%
Equipment Malfunction	0	0	0	0	0	0	0	0	0	0	0	0	0	0%	0	0%
ACS Expired	0	0	0	0	0	0	0	0	0	0	0	0	0	0%	0	0%
Total:	2	0	0	0	1	1	1	1	4	0	1	1	1	100%	1	100%
Summary Metrics																
Daily Average Vehicle Passes	477	611	429	440	366	566	462	485	458	564	496	487	Year to Date Average		2010 Average	
Average Issued Speed	17	17	17	19	19	19	19	16	18	21	18	17	487		506	
Average Issued Red	31.5	28.2	0.4	0.2	23.8	0.4	42.8	5.4	0.7	28.9	0.5	0.4	13.6		11.6	
Citation / Violation Issuance	27%	100%	40%	22%	14%	17%	12%	30%	21%	25%	33%	24%	30%		40%	
Controllable Issuance Rate	80%	100%	100%	100%	75%	80%	75%	92%	67%	100%	92%	91%	88%		82%	



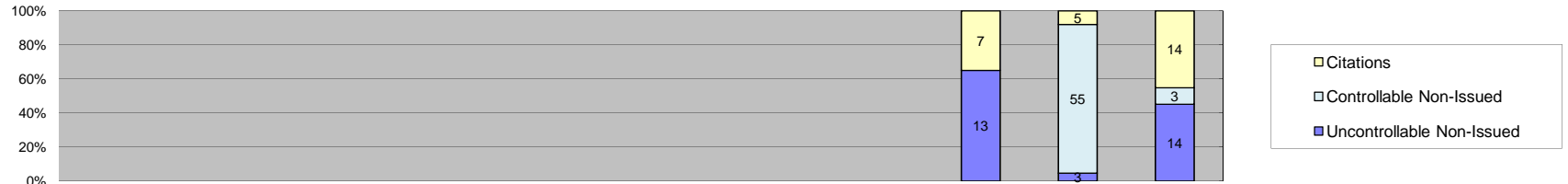
Events	Jan-11	Feb-11	Mar-11	Apr-11	May-11	Jun-11	Jul-11	Aug-11	Sep-11	Oct-11	Nov-11	Dec-11	Year to Date Average		2010 Average	
													Quantity	%	Quantity	%
Non-Violations	106	56	87	144	201	92	146	163	105	104	90	79	114	56%	108	67%
Violations	160	53	135	165	219	58	64	117	40	22	15	14	89	44%	52	33%
Total:	266	109	222	309	420	150	210	280	145	126	105	93	203	100%	161	100%
Violations																
Uncontrollable Non-Issued	82	20	70	94	144	38	35	75	27	13	11	10	52	58%	21	40%
Controllable Non-Issued	0	0	0	0	2	1	0	1	1	2	0	0	1	1%	11	21%
Citations	78	33	65	71	73	19	29	41	12	7	4	4	36	41%	20	39%
Total:	160	53	135	165	219	58	64	117	40	22	15	14	89	100%	52	100%
Non-Violations																
Rear Axle Violation	0	0	0	0	1	1	0	0	0	0	0	0	0	0%	0	0%
Gate Down - No Train	0	0	0	0	0	0	0	0	0	0	0	0	0	0%	0	0%
Train Activation	0	0	0	0	0	0	0	0	0	0	0	0	0	0%	0	0%
Emergency Vehicle	1	1	0	5	5	2	3	2	0	0	2	0	2	2%	2	2%
Right Turn	0	0	0	0	0	0	0	0	0	0	0	0	0	0%	0	0%
No Violation Occurred	105	55	87	139	195	89	143	161	105	104	88	79	113	98%	108	98%
Total:	106	56	87	144	201	92	146	163	105	104	90	79	114	100%	110	100%
Uncontrollable Non-Issued Violations																
No Plate	13	4	16	16	29	3	6	11	6	1	2	0	9	17%	5	18%
Out of State Plate	3	0	5	3	1	2	0	3	1	0	0	0	2	3%	1	3%
Glare on Plate	0	0	0	0	0	0	0	0	0	0	0	0	0	0%	0	1%
Illegible Plate	0	0	1	0	2	1	0	2	0	0	0	0	1	1%	0	1%
Plate Obstructed	0	0	0	2	2	0	0	0	0	0	0	0	0	1%	0	1%
Windshield Glare	0	0	4	2	9	2	1	1	0	1	0	0	2	3%	0	1%
Driver Obstructed	12	5	7	9	10	1	4	4	5	2	1	1	5	10%	2	7%
Car Obstructed	0	0	0	2	3	1	2	2	2	3	2	2	2	3%	2	7%
No DMV Match Found	16	3	9	14	23	5	5	11	3	2	2	3	8	16%	4	12%
LASD Expired	0	0	0	0	0	0	0	0	0	0	0	0	0	0%	3	11%
LASD Return	0	1	2	46	65	23	17	41	10	4	4	4	18	3100%	10	34%
Other	38	7	26	0	0	0	0	0	0	0	0	0	6	11%	1	4%
Total:	82	20	70	94	144	38	35	75	27	13	11	10	52	100%	29	100%
Controllable Non-Issued Violations																
Framing of Plate	0	0	0	0	0	1	0	0	0	0	0	0	0	14%	0	0%
Focus / Clarity of Plate	0	0	0	0	1	0	0	1	0	0	0	0	0	29%	0	0%
Dark Interior	0	0	0	0	1	0	0	0	0	0	0	0	0	14%	0	15%
Framing of Driver	0	0	0	0	0	0	0	0	0	0	0	0	0	0%	0	0%
Focus / Clarity of Driver	0	0	0	0	0	0	0	0	0	0	0	0	0	0%	0	8%
Framing of Car	0	0	0	0	0	0	0	0	0	1	0	0	0	14%	0	31%
Operator/Data Error	0	0	0	0	0	0	0	0	0	0	0	0	0	0%	0	0%
Exposure	0	0	0	0	0	0	0	0	0	0	0	0	0	0%	0	15%
Equipment Malfunction	0	0	0	0	0	0	0	0	1	1	0	0	0	29%	0	15%
ACS Expired	0	0	0	0	0	0	0	0	0	0	0	0	0	0%	0	15%
Total:	0	0	0	0	2	1	0	1	1	2	0	0	1	100%	1	100%
Summary Metrics																
Daily Average Vehicle Passes	474	309	503	1,678	842	440	396	584	160	277	143	162	Year to Date Average		2010 Average	
Average Issued Speed	16	17	17	15	15	15	15	15	17	17	17	17	497		261	
Average Issued Red	8.8	5.2	7.9	20.4	20.9	15.0	34.4	21.9	20.3	7.9	24.0	14.5	16.8		15.3	
Citation / Violation Issuance	49%	62%	48%	43%	33%	33%	45%	35%	30%	32%	27%	29%	39%		39%	
Controllable Issuance Rate	100%	100%	100%	100%	97%	95%	100%	98%	92%	78%	100%	100%	97%		88%	



Events	Jan-11	Feb-11	Mar-11	Apr-11	May-11	Jun-11	Jul-11	Aug-11	Sep-11	Oct-11	Nov-11	Dec-11	Year to Date Average		2010 Average	
													Quantity	%	Quantity	%
Non-Violations	197	140	187	308	403	271	656	2,547	1,719	1,626	1,863	2,276	1,016	90%	212	73%
Violations	42	40	44	70	111	88	91	185	144	145	149	176	107	10%	79	27%
Total:	239	180	231	378	514	359	747	2,732	1,863	1,771	2,012	2,452	1,123	100%	291	100%
Violations																
Uncontrollable Non-Issued	22	17	22	30	30	62	59	121	96	89	87	126	63	59%	28	36%
Controllable Non-Issued	0	0	0	11	50	3	1	12	13	18	29	1	12	11%	14	18%
Citations	20	23	22	29	31	23	31	52	35	38	33	49	32	30%	36	46%
Total:	42	40	44	70	111	88	91	185	144	145	149	176	107	100%	79	100%
Non-Violations																
Rear Axle Violation	0	0	0	0	0	0	0	1	0	0	0	0	0	0%	0	0%
Gate Down - No Train	0	0	0	0	0	0	0	0	0	0	0	0	0	0%	0	0%
Train Activation	0	0	0	0	0	0	1	0	0	2	0	0	0	0%	1	0%
Emergency Vehicle	0	0	0	0	1	2	2	1	0	3	7	1	1	0%	1	0%
Right Turn	0	0	0	0	0	0	0	0	0	0	0	0	0	0%	0	0%
No Violation Occurred	197	140	187	308	402	269	653	2,545	1,719	1,621	1,856	2,275	1,014	100%	211	99%
Total:	197	140	187	308	403	271	656	2,547	1,719	1,626	1,863	2,276	1,016	100%	213	100%
Uncontrollable Non-Issued Violations																
No Plate	6	9	9	7	9	16	11	23	14	14	17	18	13	20%	10	30%
Out of State Plate	1	0	1	2	1	0	1	4	2	2	1	3	2	2%	1	2%
Glare on Plate	0	0	1	1	0	0	0	0	0	0	0	0	0	0%	0	1%
Illegible Plate	1	0	0	0	0	0	1	0	0	0	0	0	0	0%	0	0%
Plate Obstructed	0	0	0	0	0	1	1	0	0	0	0	0	0	0%	0	0%
Windshield Glare	0	0	0	1	2	8	9	7	11	4	6	2	4	7%	3	8%
Driver Obstructed	1	1	2	1	4	2	3	5	4	4	5	11	4	6%	1	4%
Car Obstructed	2	0	3	6	8	10	3	45	33	35	33	66	20	32%	7	22%
No DMV Match Found	7	4	4	6	2	12	6	8	12	5	9	4	7	10%	5	15%
LASD Expired	0	0	0	0	0	0	0	0	0	0	0	0	0	0%	1	2%
LASD Return	1	0	0	6	4	13	24	29	20	25	16	22	13	116%	5	16%
Other	3	3	2	0	0	0	0	0	0	0	0	0	1	1%	0	0%
Total:	22	17	22	30	30	62	59	121	96	89	87	126	63	100%	33	100%
Controllable Non-Issued Violations																
Framing of Plate	0	0	0	0	0	0	0	0	0	0	0	0	0	0%	0	0%
Focus / Clarity of Plate	0	0	0	0	0	0	0	0	0	0	0	0	0	0%	0	0%
Dark Interior	0	0	0	0	0	0	0	0	0	0	0	0	0	0%	0	1%
Framing of Driver	0	0	0	0	0	0	0	0	0	0	0	0	0	0%	0	0%
Focus / Clarity of Driver	0	0	0	0	0	0	1	0	0	1	0	0	0	1%	0	0%
Framing of Car	0	0	0	0	0	0	0	0	0	0	0	0	0	0%	0	0%
Operator/Data Error	0	0	0	11	50	3	0	0	0	0	0	0	5	46%	2	22%
Exposure	0	0	0	0	0	0	0	0	0	0	1	1	0	1%	4	43%
Equipment Malfunction	0	0	0	0	0	0	0	12	13	17	28	0	6	51%	3	34%
ACS Expired	0	0	0	0	0	0	0	0	0	0	0	0	0	0%	0	0%
Total:	0	0	0	11	50	3	1	12	13	18	29	1	12	100%	9	100%
Summary Metrics																
Daily Average Vehicle Passed	2,989	3,062	3,448	7,023	3,252	3,238	3,611	3,132	2,406	2,699	2,784	2,759	Year to Date Average		2010 Average	
Average Issued Speed	20	20	19	20	20	22	18	17	18	19	19	18	3,367		3,152	
Average Issued Red	5.0	1.8	4.8	1.5	5.4	5.9	13.1	10.3	9.2	7.2	5.2	7.1	6.4		6.3	
Citation / Violation Issuance	48%	58%	50%	41%	28%	26%	34%	28%	24%	26%	22%	28%	34%		46%	
Controllable Issuance Rate	100%	100%	100%	73%	38%	88%	97%	81%	73%	68%	53%	98%	81%		79%	



Events	Jan-11	Feb-11	Mar-11	Apr-11	May-11	Jun-11	Jul-11	Aug-11	Sep-11	Oct-11	Nov-11	Dec-11	Year to Date Average		2010 Average		
													Quantity	%	Quantity	%	
Non-Violations	0	0	0	0	0	0	0	0	0	47	67	81	16	80%	47	91%	
Violations	0	0	0	0	0	0	0	0	0	14	23	11	4	20%	4	9%	
Total:	0	0	0	0	0	0	0	0	0	61	90	92	20	100%	51	100%	
Violations																	
Uncontrollable Non-Issued	0	0	0	0	0	0	0	0	0	7	14	6	2	56%	3	68%	
Controllable Non-Issued	0	0	0	0	0	0	0	0	0	5	2	1	1	17%	0	9%	
Citations	0	0	0	0	0	0	0	0	0	2	7	4	1	27%	1	23%	
Total:	0	0	0	0	0	0	0	0	0	14	23	11	4	100%	4	100%	
Non-Violations																	
Rear Axle Violation	0	0	0	0	0	0	0	0	0	0	2	1	0	2%	0	0%	
Gate Down - No Train	0	0	0	0	0	0	0	0	0	0	0	0	0	0%	0	0%	
Train Activation	0	0	0	0	0	0	0	0	0	1	0	0	0	1%	0	0%	
Emergency Vehicle	0	0	0	0	0	0	0	0	0	1	2	2	0	3%	1	2%	
Right Turn	0	0	0	0	0	0	0	0	0	0	0	1	0	1%	0	0%	
No Violation Occurred	0	0	0	0	0	0	0	0	0	45	63	77	15	95%	47	98%	
Total:	0	0	0	0	0	0	0	0	0	47	67	81	16	100%	48	100%	
Uncontrollable Non-Issued Violations																	
No Plate	0	0	0	0	0	0	0	0	0	4	4	1	1	33%	1	23%	
Out of State Plate	0	0	0	0	0	0	0	0	0	0	1	0	0	4%	0	4%	
Glare on Plate	0	0	0	0	0	0	0	0	0	0	0	0	0	0%	0	0%	
Illegible Plate	0	0	0	0	0	0	0	0	0	0	0	0	0	0%	0	0%	
Plate Obstructed	0	0	0	0	0	0	0	0	0	0	0	0	0	0%	0	0%	
Windshield Glare	0	0	0	0	0	0	0	0	0	1	2	2	0	19%	1	38%	
Driver Obstructed	0	0	0	0	0	0	0	0	0	0	1	0	0	4%	0	0%	
Car Obstructed	0	0	0	0	0	0	0	0	0	1	2	1	0	15%	1	23%	
No DMV Match Found	0	0	0	0	0	0	0	0	0	1	0	1	0	7%	0	4%	
LASD Expired	0	0	0	0	0	0	0	0	0	0	0	0	0	0%	0	8%	
LASD Return	0	0	0	0	0	0	0	0	0	0	4	1	0	63%	0	0%	
Other	0	0	0	0	0	0	0	0	0	0	0	0	0	0%	0	0%	
Total:	0	0	0	0	0	0	0	0	0	7	14	6	2	100%	2	100%	
Controllable Non-Issued Violations																	
Framing of Plate	0	0	0	0	0	0	0	0	0	0	0	0	0	0%	0	0%	
Focus / Clarity of Plate	0	0	0	0	0	0	0	0	0	0	0	0	0	0%	0	0%	
Dark Interior	0	0	0	0	0	0	0	0	0	2	1	1	0	50%	0	40%	
Framing of Driver	0	0	0	0	0	0	0	0	0	1	0	0	0	13%	0	0%	
Focus / Clarity of Driver	0	0	0	0	0	0	0	0	0	1	0	0	0	13%	0	20%	
Framing of Car	0	0	0	0	0	0	0	0	0	1	1	0	0	25%	0	40%	
Operator/Data Error	0	0	0	0	0	0	0	0	0	0	0	0	0	0%	0	0%	
Exposure	0	0	0	0	0	0	0	0	0	0	0	0	0	0%	0	0%	
Equipment Malfunction	0	0	0	0	0	0	0	0	0	0	0	0	0	0%	0	0%	
ACS Expired	0	0	0	0	0	0	0	0	0	0	0	0	0	0%	0	0%	
Total:	0	0	0	0	0	0	0	0	0	5	2	1	1	100%	0	100%	
Summary Metrics																	
Daily Average Vehicle Passes	0	0	0	0	0	0	0	0	0	2,127	5,586	4,244	Year to Date Average		2010 Average		
Average Issued Speed	0	0	0	0	0	0	0	0	0	24	24	27	996	2,845			
Average Issued Red	0.0	0.0	0.0	0	0	0	0	0	0	0.6	15.0	0.5	12	10			
Citation / Violation Issuance	0%	0%	0%	0%	0%	0%	0%	0%	0%	14%	30%	36%	2.7	3.7			
Controllable Issuance Rate	0%	0%	0%	0%	0%	0%	0%	0%	0%	29%	78%	80%	27%	23%			
													62%	44%			



Events	Jan-11	Feb-11	Mar-11	Apr-11	May-11	Jun-11	Jul-11	Aug-11	Sep-11	Oct-11	Nov-11	Dec-11	Year to Date Average		2010 Average		
													Quantity	%	Quantity	%	
Non-Violations	0	0	0	0	0	0	0	0	0	137	150	225	43	82%	76	66%	
Violations	0	0	0	0	0	0	0	0	0	20	63	31	10	18%	40	34%	
Total:	0	0	0	0	0	0	0	0	0	157	213	256	52	100%	116	100%	
Violations																	
Uncontrollable Non-Issued	0	0	0	0	0	0	0	0	0	13	3	14	3	26%	16	40%	
Controllable Non-Issued	0	0	0	0	0	0	0	0	0	0	55	3	5	51%	6	15%	
Citations	0	0	0	0	0	0	0	0	0	7	5	14	2	23%	18	45%	
Total:	0	0	0	0	0	0	0	0	0	20	63	31	10	100%	40	100%	
Non-Violations																	
Rear Axle Violation	0	0	0	0	0	0	0	0	0	0	0	0	0	0%	0	0%	
Gate Down - No Train	0	0	0	0	0	0	0	0	0	0	0	0	0	0%	0	0%	
Train Activation	0	0	0	0	0	0	0	0	0	0	0	0	0	0%	0	0%	
Emergency Vehicle	0	0	0	0	0	0	0	0	0	0	1	1	0	0%	1	1%	
Right Turn	0	0	0	0	0	0	0	0	0	0	0	0	0	0%	0	0%	
No Violation Occurred	0	0	0	0	0	0	0	0	0	137	149	224	43	100%	76	99%	
Total:	0	0	0	0	0	0	0	0	0	137	150	225	43	100%	77	100%	
Uncontrollable Non-Issued Violations																	
No Plate	0	0	0	0	0	0	0	0	0	3	1	6	1	33%	4	18%	
Out of State Plate	0	0	0	0	0	0	0	0	0	0	1	1	0	7%	1	5%	
Glare on Plate	0	0	0	0	0	0	0	0	0	0	0	0	0	0%	0	0%	
Illegible Plate	0	0	0	0	0	0	0	0	0	0	0	0	0	0%	0	0%	
Plate Obstructed	0	0	0	0	0	0	0	0	0	0	0	0	0	0%	0	1%	
Windshield Glare	0	0	0	0	0	0	0	0	0	0	0	0	0	0%	0	1%	
Driver Obstructed	0	0	0	0	0	0	0	0	0	0	1	0	0	3%	4	22%	
Car Obstructed	0	0	0	0	0	0	0	0	0	4	0	3	1	23%	2	9%	
No DMV Match Found	0	0	0	0	0	0	0	0	0	1	0	3	0	13%	3	15%	
LASD Expired	0	0	0	0	0	0	0	0	0	0	0	0	0	0%	1	5%	
LASD Return	0	0	0	0	0	0	0	0	0	5	0	1	1	10%	5	24%	
Other	0	0	0	0	0	0	0	0	0	0	0	0	0	0%	0	0%	
Total:	0	0	0	0	0	0	0	0	0	13	3	14	3	100%	20	100%	
Controllable Non-Issued Violations																	
Framing of Plate	0	0	0	0	0	0	0	0	0	0	4	0	0	7%	0	18%	
Focus / Clarity of Plate	0	0	0	0	0	0	0	0	0	0	0	0	0	0%	0	0%	
Dark Interior	0	0	0	0	0	0	0	0	0	0	1	0	0	2%	0	18%	
Framing of Driver	0	0	0	0	0	0	0	0	0	0	2	0	0	3%	1	55%	
Focus / Clarity of Driver	0	0	0	0	0	0	0	0	0	0	0	0	0	0%	0	0%	
Framing of Car	0	0	0	0	0	0	0	0	0	0	4	0	0	7%	0	9%	
Operator/Data Error	0	0	0	0	0	0	0	0	0	0	0	0	0	0%	0	0%	
Exposure	0	0	0	0	0	0	0	0	0	0	0	3	0	5%	0	0%	
Equipment Malfunction	0	0	0	0	0	0	0	0	0	0	44	0	4	76%	0	0%	
ACS Expired	0	0	0	0	0	0	0	0	0	0	0	0	0	0%	0	0%	
Total:	0	0	0	0	0	0	0	0	0	0	55	3	5	100%	1	100%	
Summary Metrics																	
Daily Average Vehicle Passed	0	0	0	0	0	0	0	0	0	414	983	1,072	Year to Date Average		2010 Average		
Average Issued Speed	0	0	0	0	0	0	0	0	0	15	14	15	7	12			
Average Issued Red	0.0	0.0	0.0	0	0	0	0	0	0	75.9	35.7	35.8	24.6	28.7			
Citation / Violation Issuance	0%	0%	0%	0%	0%	0%	0%	0%	0%	35%	8%	45%	29%	45%			
Controllable Issuance Rate	0%	0%	0%	0%	0%	0%	0%	0%	0%	100%	8%	82%	64%	91%			

Calls For Information

Reason for Call	Dec-11	3 Month Average	Year to Date Average	Year to Date Total	2010 Average
<i>Appointment</i>	3	2	3	37	5
<i>Bail</i>	7	8	8	95	9
<i>Complaint</i>	0	0	0	0	0
<i>Contest Violation</i>	12	11	9	108	9
<i>Courtesy Notice</i>	0	0	0	0	0
<i>Explain Citation</i>	2	4	3	33	2
<i>Explain Court</i>	0	0	0	2	0
<i>Explain the Project</i>	0	0	0	0	0
<i>Extension</i>	3	4	3	33	5
<i>Other</i>	1	0	0	1	0
<i>Affidavit of Non-Liability</i>	1	10	8	101	11
<i>Affidavit of Non-Liability Status</i>	0	2	1	12	8
<i>Traffic Shool</i>	0	0	1	13	2
Total Calls	29	41	36	435	51
Appointments Scheduled	2	1	3	39	5
Affidavits of Non-Liability Processed	40	37	43	511	54
Court Packets Prepared	33	21	29	350	26



A **xerox** Company

Los Angeles County MTA Blue Line Monthly Citation Yield - By Location *December 2011*

Direction	Location	Code	Days of Enforcement	Events	Violations	Citations	Yield*
WB	20th St @ Long Beach Blvd.	322	31	3	3	1	0.03
EB	Vernon Ave @ Long Beach	421	31	21	19	7	0.23
EB	Century Blvd. @ Grandee	821	31	12	8	3	0.10
WB	Century Blvd. @ Grandee	822	31	18	18	6	0.19
EB	103rd St @ Grandee	841	31	34	25	5	0.16
EB	119th St @ Willowbrook	981	31	12	11	2	0.06
WB	119th St @ Willowbrook	982	31	44	33	5	0.16
EB	130th @ Willowbrook	1051	31	2	2	0	0.00
WB	130th @ Willowbrook	1052	31	20	18	2	0.06
EB	Stockwell @ Willowbrook	1081	31	28	18	2	0.06
WB	Stockwell @ Willowbrook	1082	31	17	17	12	0.39
EB	Washington to NB Los Angeles	2003	31	519	114	27	0.87
WB	Washington to SB Los Angeles	2008	31	140	9	3	0.10
EB	Washington to NB San Pedro	2017	31	492	171	54	1.74
WB	Washington to SB San Pedro	2018	31	444	53	12	0.39
EB	Washington to NB Broadway	2027	31	374	41	10	0.32
SB	Flower to EB 18th Street	2036	31	93	14	4	0.13
SB	Flower to EB 10 Fwy On Ramp	2046	31	2452	176	49	1.58
WB	Vanice @ Flower	2054	31	92	11	4	0.13
SB	Flower to EB Venice	2056	31	256	31	14	0.45
Totals			31	5,073	792	222	7.16

*Yield is the number of citations issued per day of enforcement.



A **xerox** Company

**Los Angeles County MTA Blue Line
Disposition Summary Report
December 2011**

	Dec-11		3 Month Average		YTD Total		YTD Average		2010 Average	
Disposition Type	Count /Amount Paid		Count /Amount Paid		Count /Amount Paid		Count /Amount Paid		Count /Amount Paid	
<i>Bail Forfeiture</i>	49	\$25,157.00	58	\$28,997.33	675	\$340,894.00	56	\$28,407.83	75	\$35,506.92
<i>Fine Paid</i>	24	\$12,096.00	14	\$6,957.67	231	\$118,940.00	19	\$9,911.67	20	\$9,911.50
<i>Department Void</i>	1	\$0.00	1	\$0.00	15	\$0.00	1	\$0.00	2	\$0.00
<i>Not Guilty</i>	15	\$0.00	15	\$0.00	170	\$0.00	14	\$0.00	18	\$0.00
<i>Section D Void</i>	40	\$0.00	56	\$0.00	548	\$0.00	46	\$0.00	54	\$0.00
<i>Traffic School</i>	33	\$17,908.00	43	\$22,117.00	529	\$278,689.00	44	\$23,224.08	49	\$24,898.42
Court Gross Total	162	\$55,161.00	187	\$58,072.00	2,168	\$738,523.00	181	\$61,543.58	218	\$70,316.83
MTA Gross Total*	106	\$15,347.28	421	\$16,686.56	1435	\$208,157.31	120	\$17,346.44	144	\$20,906.70

*Logic built on following model (assuming the new 2009 fine and fee structure):

MTA receives \$146.31 of \$446.00 citation where bail forfeiture and fine paid occurs

MTA receives \$148.05 of \$509.00 citation when traffic school option is paid for

	<u>Total</u> <u>Events</u>	<u>Non</u> <u>Violations</u>	<u>Potential</u> <u>Violations</u>	<u>Percent</u> <u>Citable</u>	<u>Non Issued</u> <u>Violations</u>	<u>No DMV</u> <u>Match</u>	<u>Police/</u> <u>Client</u> <u>Rejected</u>	<u>Citations</u> <u>Issued</u>	<u>DMV</u> <u>Match</u> <u>Rate</u>	<u>Issuance</u> <u>Rate</u>	<u>Dispo</u> <u>Paid</u>	<u>Pay</u> <u>Rate</u>	<u>Closed</u> <u>No Pay</u>	<u>Pending</u> <u>Open</u>	<u>Closure</u> <u>Rate</u>	<u>Court</u> <u>Packs</u>	<u>Contest</u> <u>Rate</u>
Jan-04	5235	4080	1155	22.06%	420	11	1	735	98.53%	63.64%	541	74%	43	151	79%	-	-
Feb-04	4775	3564	1211	25.36%	450	13	6	761	98.33%	62.84%	562	74%	53	146	81%	-	-
Mar-04	5478	4052	1426	26.03%	637	20	3	789	97.54%	55.33%	569	72%	47	173	78%	-	-
Apr-04	4159	2638	1521	36.57%	788	20	6	733	97.36%	48.19%	551	75%	50	132	82%	-	-
May-04	4008	2442	1566	39.07%	595	24	4	971	97.60%	62.01%	684	70%	66	221	77%	-	-
Jun-04	3563	2232	1331	37.36%	729	22	2	602	96.49%	45.23%	421	70%	45	136	77%	-	-
Jul-04	3772	2425	1347	35.11%	532	19	4	815	97.73%	60.50%	582	71%	64	169	79%	-	-
Aug-04	3476	2270	1206	34.70%	696	28	12	510	94.91%	42.29%	366	72%	38	106	79%	-	-
Sep-04	3701	2417	1284	34.69%	823	22	6	461	95.50%	35.90%	340	74%	33	88	81%	-	-
Oct-04	3497	2260	1237	35.37%	549	15	3	688	97.88%	55.62%	487	71%	66	135	80%	-	-
Nov-04	3218	2056	1162	36.11%	467	20	15	695	97.26%	59.81%	500	72%	44	151	78%	-	-
Dec-04	3843	2736	1107	28.81%	590	15	14	517	97.25%	46.70%	375	73%	49	93	82%	-	-
Jan-05	3656	2621	1035	28.31%	456	15	41	579	97.64%	55.94%	421	91%	36	122	79%	-	-
Feb-05	3200	2207	993	31.03%	440	9	27	553	98.47%	55.69%	404	59%	43	106	81%	-	-
Mar-05	3156	2116	1040	32.95%	454	26	29	586	95.94%	56.35%	435	63%	47	104	82%	-	-
Apr-05	3688	2383	1305	35.39%	755	126	32	550	82.20%	42.15%	404	78%	48	98	82%	-	-
May-05	3617	2390	1227	33.92%	618	117	24	609	84.40%	49.63%	441	76%	52	116	81%	-	-
Jun-05	3871	2719	1152	29.76%	650	114	41	502	82.65%	43.58%	351	63%	38	113	77%	-	-
Jul-05	3507	2277	1230	35.07%	538	111	0	692	86.18%	56.26%	457	78%	103	132	81%	-	-
Aug-05	3711	2481	1230	33.14%	675	142	19	555	80.17%	45.12%	396	72%	47	112	80%	-	-
Sep-05	3855	2629	1226	31.80%	562	125	8	664	84.32%	54.16%	475	78%	50	139	79%	-	-
Oct-05	4897	3728	1169	23.87%	566	97	18	603	86.49%	51.58%	421	84%	57	125	79%	-	-
Nov-05	4956	3785	1171	23.63%	633	105	16	538	84.07%	45.94%	399	58%	34	105	80%	-	-
Dec-05	4919	3937	982	19.96%	529	116	26	453	80.50%	46.13%	346	62%	35	72	84%	-	-
Jan-06	4752	3726	1026	21.59%	558	98	30	468	83.56%	45.61%	348	52%	39	81	83%	70	14.7%
Feb-06	4929	3808	1121	22.74%	657	97	33	464	83.67%	41.39%	338	56%	34	92	80%	39	9.3%
Mar-06	5620	4412	1208	21.49%	710	110	72	498	83.82%	41.23%	347	64%	57	94	81%	45	11.3%
Apr-06	5159	4084	1075	20.84%	572	126	30	503	80.88%	46.79%	368	81%	53	82	84%	66	19.1%
May-06	4914	3801	1113	22.65%	566	124	26	547	82.21%	49.15%	397	85%	57	93	83%	68	19.5%
Jun-06	4855	3834	1021	21.03%	531	153	17	490	76.82%	47.99%	366	79%	39	85	83%	49	14.5%
Jul-06	4835	3620	1215	25.13%	647	108	40	568	84.92%	46.75%	396	80%	59	113	80%	40	11.5%
Aug-06	4677	3572	1105	23.63%	820	123	19	285	71.19%	25.79%	197	39%	27	61	79%	62	16.8%
Sep-06	4487	3396	1091	24.31%	702	115	21	389	78.10%	35.66%	265	48%	46	78	80%	53	13.4%
Oct-06	7566	6244	1322	17.47%	913	181	27	409	70.66%	30.94%	303	62%	21	85	79%	52	14.2%
Nov-06	5897	4690	1207	20.47%	706	112	52	501	83.16%	41.51%	359	63%	49	93	81%	42	10.6%
Dec-06	5891	4671	1220	20.71%	697	128	78	523	82.44%	42.87%	378	133%	35	110	79%	71	36.0%
Jan-07	5244	4035	1209	23.05%	822	129	63	387	77.72%	32.01%	277	71%	37	73	81%	40	15.1%
Feb-07	4897	3777	1120	22.87%	913	140	61	207	65.69%	18.48%	154	38%	17	36	83%	65	21.5%
Mar-07	5936	4506	1430	24.09%	967	191	90	463	74.33%	32.38%	326	65%	51	86	81%	40	11.1%
Apr-07	5139	4237	902	17.55%	595	111	88	307	78.06%	34.04%	202	39%	55	50	84%	91	24.1%
May-07	1148	471	677	58.97%	270	100	76	407	82.85%	60.12%	291	75%	30	86	79%	50	18.1%
Jun-07	3802	2589	1213	31.90%	955	125	85	258	73.29%	21.27%	180	87%	13	65	75%	57	37.0%
Jul-07	3417	2250	1167	34.15%	932	116	96	235	74.05%	20.14%	148	32%	20	67	71%	40	12.3%

	<u>Total</u> <u>Events</u>	<u>Non</u> <u>Violations</u>	<u>Potential</u> <u>Violations</u>	<u>Percent</u> <u>Citable</u>	<u>Non Issued</u> <u>Violations</u>	<u>No DMV</u> <u>Match</u>	<u>Police/</u> <u>Client</u> <u>Rejected</u>	<u>Citations</u> <u>Issued</u>	<u>DMV</u> <u>Match</u> <u>Rate</u>	<u>Issuance</u> <u>Rate</u>	<u>Dispo</u> <u>Paid</u>	<u>Pay</u> <u>Rate</u>	<u>Closed</u> <u>No Pay</u>	<u>Pending</u> <u>Open</u>	<u>Closure</u> <u>Rate</u>	<u>Court</u> <u>Packs</u>	<u>Contest</u> <u>Rate</u>
Aug-07	4301	3151	1150	26.74%	861	130	66	289	73.20%	25.13%	194	63%	21	74	74%	98	48.5%
Sep-07	3904	3069	835	21.39%	588	104	56	247	74.45%	29.58%	144	35%	21	82	67%	40	13.7%
Oct-07	6157	5056	1101	17.88%	771	100	43	330	78.86%	29.97%	184	71%	40	106	68%	53	29.4%
Nov-07	7367	6035	1332	18.08%	913	115	2	419	78.54%	31.46%	172	73%	159	88	79%	44	29.7%
Dec-07	5880	4659	1221	20.77%	869	122	0	352	74.26%	28.83%	160	55%	116	76	78%	48	24.7%
Jan-08	6059	5047	1012	16.70%	679	112	0	333	74.83%	32.91%	208	84%	81	44	87%	41	28.5%
Feb-08	7348	6296	1052	14.32%	695	122	1	357	74.58%	33.94%	211	64%	87	59	83%	60	32.6%
Mar-08	6761	5525	1236	18.28%	890	110	2	346	75.98%	27.99%	189	45%	95	62	82%	33	19.2%
Apr-08	6259	4964	1295	20.69%	1025	94	0	270	74.18%	20.85%	182	52%	45	43	84%	57	35.6%
May-08	6273	5174	1099	17.52%	906	63	2	193	75.58%	17.56%	119	36%	41	33	83%	50	24.0%
Jun-08	5517	4350	1167	21.15%	957	74	0	210	73.94%	17.99%	131	37%	40	39	81%	41	19.4%
Jul-08	5736	4740	996	17.36%	745	74	3	251	77.44%	25.20%	171	49%	38	42	83%	41	21.7%
Aug-08	5001	3982	1019	20.38%	687	91	2	332	78.59%	32.58%	201	74%	73	58	83%	23	12.6%
Sep-08	5049	4204	845	16.74%	514	77	1	331	81.17%	39.17%	194	101%	76	61	82%	48	40.3%
Oct-08	5045	4313	732	14.51%	451	59	0	281	82.65%	38.39%	147	70%	49	85	70%	44	33.6%
Nov-08	4824	4190	634	13.14%	339	65	0	295	81.94%	46.53%	164	65%	61	70	76%	41	24.0%
Dec-08	5295	4552	743	14.03%	391	70	0	352	83.41%	47.38%	163	49%	144	45	87%	30	14.9%
Jan-09	4838	4178	660	13.64%	377	68	0	283	80.63%	42.88%	138	42%	91	54	81%	42	21.6%
Feb-09	4965	4299	666	13.41%	354	61	1	312	83.69%	46.85%	182	65%	69	61	80%	31	21.1%
Mar-09	5197	4390	807	15.53%	525	70	2	282	80.23%	34.94%	174	59%	50	58	79%	43	26.2%
Apr-09	5448	4301	1147	21.05%	782	23	2	365	94.10%	31.82%	168	48%	134	63	83%	52	31.9%
May-09	4847	4078	769	15.87%	445	92	0	324	77.88%	42.13%	171	60%	95	58	82%	43	31.2%
Jun-09	4247	3588	659	15.52%	394	54	2	265	83.18%	40.21%	134	43%	82	49	82%	73	40.1%
Jul-09	4226	3533	693	16.40%	432	64	1	261	80.37%	37.66%	144	51%	61	56	79%	35	20.1%
Aug-09	4471	3814	657	14.69%	387	60	1	270	81.87%	41.10%	130	36%	83	57	79%	32	19.0%
Sep-09	3864	3282	582	15.06%	345	53	18	237	82.79%	40.72%	113	35%	84	40	83%	9	5.3%
Oct-09	4644	4002	642	13.82%	388	75	2	254	77.34%	39.56%	119	45%	89	46	82%	36	26.9%
Nov-09	3626	3082	544	15.00%	359	53	12	185	78.80%	34.01%	97	37%	51	37	80%	41	28.5%
Dec-09	4139	3511	628	15.17%	361	49	8	267	84.88%	42.52%	157	58%	54	56	79%	33	25.4%
Jan-10	3822	3255	567	14.84%	346	38	33	221	86.99%	38.98%	135	57%	34	52	76%	25	22.1%
Feb-10	3063	2321	742	24.22%	444	80	22	298	80.00%	40.16%	190	75%	38	70	77%	19	16.0%
Mar-10	3392	2601	791	23.32%	474	91	27	317	79.08%	40.08%	190	103%	42	85	73%	9	9.3%
Apr-10	3685	2935	750	20.35%	493	55	67	257	85.49%	34.27%	143	54%	62	52	80%	12	7.6%
May-10	3465	2732	733	21.15%	507	66	59	226	81.20%	30.83%	125	57%	50	51	77%	35	25.9%
Jun-10	3312	2531	781	23.58%	472	46	45	309	88.50%	39.56%	174	58%	73	62	80%	28	14.7%
Jul-10	2783	2107	676	24.29%	432	57	34	244	82.99%	36.09%	154	49%	45	45	82%	18	9.5%
Aug-10	3492	2687	805	23.05%	510	65	62	295	84.60%	36.65%	150	58%	67	78	74%	34	23.8%
Sep-10	2612	1985	627	24.00%	382	50	22	245	84.23%	39.07%	122	54%	44	79	68%	39	31.2%
Oct-10	2746	2105	641	23.34%	365	56	12	276	83.72%	43.06%	165	53%	37	74	73%	33	19.0%
Nov-10	2802	2146	656	23.41%	419	51	51	237	84.96%	36.13%	113	46%	53	71	70%	14	9.1%
Dec-10	2787	2130	657	23.57%	411	68	25	246	79.94%	37.44%	116	39%	51	79	68%	45	30.0%

	<u>Total</u> <u>Events</u>	<u>Non</u> <u>Violations</u>	<u>Potential</u> <u>Violations</u>	<u>Percent</u> <u>Citable</u>	<u>Non Issued</u> <u>Violations</u>	<u>No DMV</u> <u>Match</u>	<u>Police/</u> <u>Client</u> <u>Rejected</u>	<u>Citations</u> <u>Issued</u>	<u>DMV</u> <u>Match</u> <u>Rate</u>	<u>Issuance</u> <u>Rate</u>	<u>Dispo</u> <u>Paid</u>	<u>Pay</u> <u>Rate</u>	<u>Closed</u> <u>No Pay</u>	<u>Pending</u> <u>Open</u>	<u>Closure</u> <u>Rate</u>	<u>Court</u> <u>Packs</u>	<u>Contest</u> <u>Rate</u>
Jan-11	2780	2163	617	22.19%	364	73	20	253	78.90%	41.00%	102	42%	84	67	74%	35	28.7%
Feb-11	2705	2157	548	20.26%	310	74	20	238	77.71%	43.43%	108	39%	50	80	66%	32	19.4%
Mar-11	2710	2008	702	25.90%	440	62	13	262	81.60%	37.32%	89	38%	65	108	59%	23	20.4%
Apr-11	2937	2223	714	24.31%	457	74	88	257	82.34%	35.99%	88	36%	60	109	58%	36	31.0%
May-11	3285	2527	758	23.07%	529	56	105	229	85.64%	30.21%	86	34%	40	103	55%	29	28.4%
Jun-11	3064	2366	698	22.78%	522	60	70	176	80.39%	25.21%	44	18%	29	103	41%	34	31.5%
Jul-11	3619	2989	630	17.41%	479	50	101	151	83.44%	23.97%	33	13%	13	105	30%	36	40.4%
Aug-11	5913	5027	886	14.98%	678	71	147	208	83.33%	23.48%	47	18%	5	156	25%	29	33.0%
Sep-11	4528	3781	747	16.50%	549	58	110	198	84.15%	26.51%	44	17%	2	152	23%	25	28.4%
Oct-11	4646	3843	803	17.28%	572	65	115	231	84.18%	28.77%	22	9%	5	204	12%	25	28.4%
Nov-11	4075	3384	691	16.96%	501	52	66	190	83.12%	27.50%	10	4%	0	180	5%	13	14.8%
Dec-11	5073	4281	792	15.61%	570	57	118	222	85.64%	28.03%	1	0%	23	198	11%	33	38.4%
Total	423,507	329,817	93,690	22.12%	56,341	7,498	3,020	37,349	84.34%	39.86%	23,680	64.42%	5,029	8,640	78.05%	2,963	22.8%

* Pay Rate and Closure Rate percentages are based on a 3 month (90 day) lag

** Contested Citations Data Available from January 2006 to present

*** Contested Citations take into account a 3 month (90 day) lag from the violation date to the trail date.