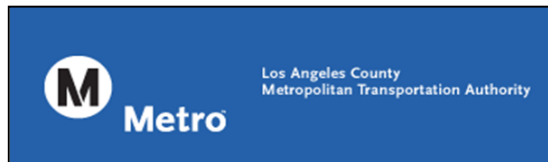




# Blue Line Monthly Report



December 2013



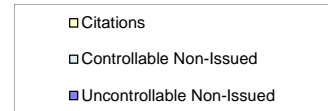
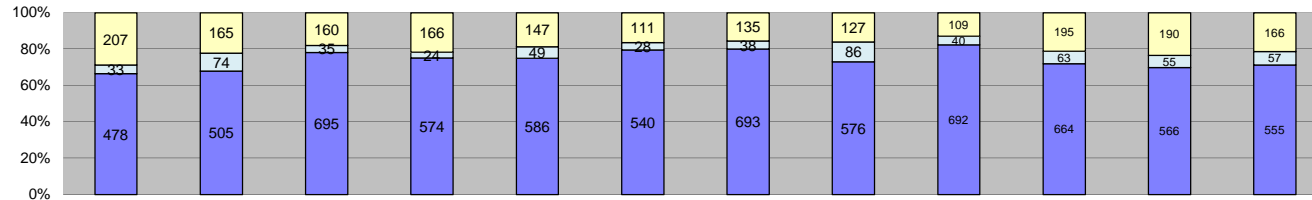


Table of Contents

Report Title	Page
<i>Approach Summary Report, All Locations.....</i>	2
<i>Approach Summary Report, Location 322, WB 20th Street @ Long Beach Boulevard.....</i>	3
<i>Approach Summary Report, Location 421, EB Vernon Avenue @ Long Beach Boulevard.....</i>	4
<i>Approach Summary Report, Location 821, EB Century Blvd. @ Grandee Avenue.....</i>	5
<i>Approach Summary Report, Location 822, WB Century Blvd. @ Grandee Avenue.....</i>	6
<i>Approach Summary Report, Location 841, EB 103rd Street @ Grandee Avenue.....</i>	7
<i>Approach Summary Report, Location 981, EB 119th Street @ Willowbrook Boulevard.....</i>	8
<i>Approach Summary Report, Location 982, WB 119th Street @ Willowbrook Boulevard.....</i>	9
<i>Approach Summary Report, Location 1051, EB 130th Street @ Willowbrook Boulevard.....</i>	10
<i>Approach Summary Report, Location 1052, WB 130th Street @ Willowbrook Boulevard.....</i>	11
<i>Approach Summary Report, Location 1081, EB Stockwell Street @ Willowbrook Boulevard.....</i>	12
<i>Approach Summary Report, Location 1082, WB Stockwell Street @ Willowbrook Boulevard.....</i>	13
<i>Approach Summary Report, Location 2003, EB Washington Boulevard @ Los Angeles Street.....</i>	14
<i>Approach Summary Report, Location 2008, WB Washington Boulevard @ Los Angeles Street.....</i>	15
<i>Approach Summary Report, Location 2017, EB Washington Boulevard @ San Pedro Street.....</i>	16
<i>Approach Summary Report, Location 2018, WB Washington Boulevard @ San Pedro Street.....</i>	17
<i>Approach Summary Report, Location 2027, EB Washington Boulevard @ Broadway Street.....</i>	18
<i>Approach Summary Report, Location 2036, SB Flower Street @ 18th Street.....</i>	19
<i>Approach Summary Report, Location 2046, SB Flower Street to EB 10 Freeway On Ramp.....</i>	20
<i>Approach Summary Report, Location 2054, WB Venice @ Flower.....</i>	21
<i>Approach Summary Report, Location 2056, SB Venice @ Flower.....</i>	22
<i>Customer Service Report.....</i>	23
<i>Monthly Citation Yield Report.....</i>	24
<i>Disposition Summary Report.....</i>	25
<i>Performance Report.....</i>	26



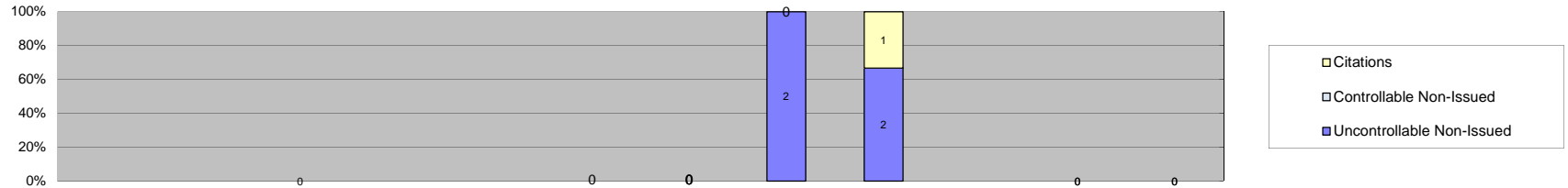
# Los Angeles County MTA Blue Line Approach Summary Report All Locations



Events	2013												Year to Date Average		2012 Average	
	Jan-13	Feb-13	Mar-13	Apr-13	May-13	Jun-13	Jul-13	Aug-13	Sep-13	Oct-13	Nov-13	Dec-13	Quantity	%	Quantity	%
Non-Violations	4,289	3,950	4,993	4,969	5,101	4,699	5,156	5,056	4,546	5,424	4,558	4,341	4,757	86%	3,062	81%
Violations	718	744	890	764	782	679	866	789	841	922	811	778	799	14%	716	19%
<b>Total:</b>	<b>5,007</b>	<b>4,694</b>	<b>5,883</b>	<b>5,733</b>	<b>5,883</b>	<b>5,378</b>	<b>6,022</b>	<b>5,845</b>	<b>5,387</b>	<b>6,346</b>	<b>5,369</b>	<b>5,119</b>	<b>5,556</b>	<b>100%</b>	<b>3,778</b>	<b>100%</b>
<b>Violations</b>																
Uncontrollable Non-Issued	478	505	695	574	586	540	693	576	692	664	566	555	594	74%	413	58%
Controllable Non-Issued	33	74	35	24	49	28	38	86	40	63	55	57	49	6%	84	12%
Citations	207	165	160	166	147	111	135	127	109	195	190	166	157	20%	218	30%
<b>Total:</b>	<b>718</b>	<b>744</b>	<b>890</b>	<b>764</b>	<b>782</b>	<b>679</b>	<b>866</b>	<b>789</b>	<b>841</b>	<b>922</b>	<b>811</b>	<b>778</b>	<b>799</b>	<b>100%</b>	<b>716</b>	<b>100%</b>
<b>Non-Violations</b>																
Rear Axle Violation	23	5	3	1	1	1	3	0	2	0	1	3	4	0%	10	0%
Gate Down - No Train	0	7	6	3	4	2	3	1	0	0	1	7	4	0%	11	0%
Train Activation	7	0	7	0	1	2	2	1	0	0	0	0	3	0%	20	1%
Emergency Vehicle	25	23	28	13	17	27	43	25	32	38	39	31	28	1%	10	0%
Right Turn	0	0	0	0	0	0	0	0	0	0	0	0	0	0%	0	0%
No Violation Occurred	4,234	3,915	4,949	4,952	5,078	4,667	5,105	5,029	4,512	5,386	4,517	4,300	4,720	99%	3,011	98%
<b>Total:</b>	<b>4,289</b>	<b>3,950</b>	<b>4,993</b>	<b>4,969</b>	<b>5,101</b>	<b>4,699</b>	<b>5,156</b>	<b>5,056</b>	<b>4,546</b>	<b>5,424</b>	<b>4,558</b>	<b>4,341</b>	<b>4,760</b>	<b>100%</b>	<b>3,062</b>	<b>100%</b>
<b>Uncontrollable Non-Issued Violations</b>																
No Plate	86	78	88	62	76	85	99	85	94	92	70	79	83	14%	57	14%
Out of State Plate	7	10	10	9	7	9	17	15	8	12	6	10	10	2%	10	2%
Glare on Plate	2	6	3	2	3	5	4	1	8	5	0	3	4	1%	1	0%
Illegible Plate	24	22	15	38	31	11	52	38	41	36	52	42	34	6%	3	1%
Plate Obstructed	16	13	14	6	2	8	5	5	5	12	10	7	9	1%	8	2%
Windshield Glare	101	116	219	158	156	176	161	162	213	180	164	129	161	27%	75	18%
Driver Obstructed	20	26	38	37	37	24	47	28	33	38	24	21	31	5%	25	6%
Car Obstructed	33	36	63	14	21	18	22	10	18	26	16	22	25	4%	78	19%
No DMV Match Found	77	61	78	88	83	58	81	74	71	84	75	105	78	13%	63	15%
LASD Expired	6	0	0	0	0	0	0	0	0	0	1	15	7	1%	1	0%
LASD Return	106	137	167	160	170	146	205	158	201	179	148	122	158	26%	81	19%
Other	0	0	0	0	0	0	0	0	0	0	0	0	0	0%	16	4%
<b>Total:</b>	<b>478</b>	<b>505</b>	<b>695</b>	<b>574</b>	<b>586</b>	<b>540</b>	<b>693</b>	<b>576</b>	<b>692</b>	<b>664</b>	<b>566</b>	<b>555</b>	<b>599</b>	<b>100%</b>	<b>417</b>	<b>100%</b>
<b>Controllable Non-Issued Violations</b>																
Framing of Plate	0	0	2	0	0	1	0	0	1	1	0	0	1	2%	6	7%
Focus / Clarity of Plate	0	0	7	0	0	0	0	1	1	7	0	0	4	7%	2	2%
Dark Interior	16	14	7	7	18	5	18	7	15	21	19	31	15	25%	13	15%
Framing of Driver	0	3	1	0	0	0	1	1	3	5	4	2	3	4%	8	9%
Focus / Clarity of Driver	0	0	2	0	0	0	1	0	2	4	0	2	2	4%	2	2%
Framing of Car	0	6	4	0	0	0	0	1	3	6	8	2	4	7%	22	25%
Operator/Data Error	0	1	0	0	9	0	6	1	0	3	10	1	4	7%	13	15%
Exposure	4	12	2	0	0	3	0	4	7	6	3	6	5	9%	4	5%
Equipment Malfunction	13	38	9	17	22	19	12	71	8	10	11	13	20	34%	18	21%
ACS Expired	0	0	1	0	0	0	0	0	0	0	0	0	1	2%	0	0%
<b>Total:</b>	<b>33</b>	<b>74</b>	<b>35</b>	<b>24</b>	<b>49</b>	<b>28</b>	<b>38</b>	<b>86</b>	<b>40</b>	<b>63</b>	<b>55</b>	<b>57</b>	<b>60</b>	<b>100%</b>	<b>86</b>	<b>100%</b>
<b>Summary Metrics</b>																
Daily Average Vehicle Passes	61,381	74,056	70,442	72,661	75,409	83,412	85,457	77,804	86,212	85,839	80,991	83,252	78,076		77,552	
Average Issued Speed	15	16	16	17	17	17	16	17	15	19	18	15	16		15	
Average Issued Red Seconds	19.1	14.6	17.7	13.2	16.0	12.6	14.0	11.3	28.6	10.0	5.9	9.1	14.3		11.6	
Citation / Violation Issuance Rate	29%	22%	18%	22%	19%	16%	16%	16%	13%	21%	23%	21%	20%		30%	
Controllable Issuance Rate	86%	69%	82%	87%	75%	80%	78%	60%	73%	76%	78%	74%	76%		72%	



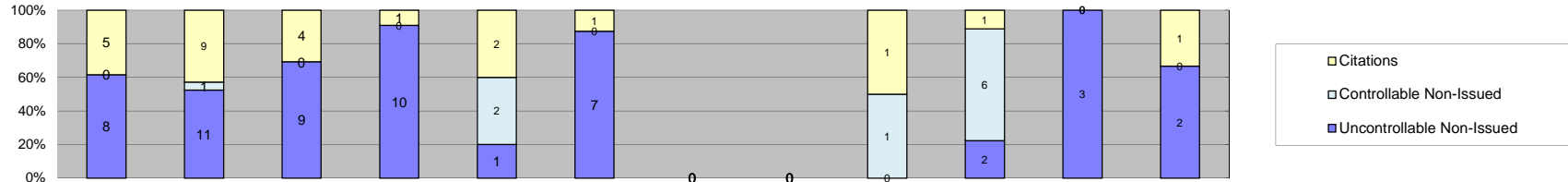
**Los Angeles County MTA Blue Line  
Approach Summary Report  
Location 322: WB 20th St @ Long Beach Ave**



Events	Jan-13	Feb-13	Mar-13	Apr-13	May-13	Jun-13	Jul-13	Aug-13	Sep-13	Oct-13	Nov-13	Dec-13	Year to Date Average		2012 Average	
													Quantity	%	Quantity	%
Non-Violations	0	0	0	0	0	0	0	0	1	0	0	0	1	29%	0	31%
Violations	0	0	0	0	0	0	0	2	3	0	0	0	3	71%	1	69%
<b>Total:</b>	<b>0</b>	<b>0</b>	<b>0</b>	<b>0</b>	<b>0</b>	<b>0</b>	<b>0</b>	<b>2</b>	<b>4</b>	<b>0</b>	<b>0</b>	<b>0</b>	<b>4</b>	<b>100%</b>	<b>1</b>	<b>100%</b>
<b>Violations</b>																
Uncontrollable Non-Issued	0	0	0	0	0	0	0	2	2	0	0	0	2	67%	0	36%
Controllable Non-Issued	0	0	0	0	0	0	0	0	0	0	0	0	0	0%	0	36%
Citations	0	0	0	0	0	0	0	0	1	0	0	0	1	33%	0	27%
<b>Total:</b>	<b>0</b>	<b>0</b>	<b>0</b>	<b>0</b>	<b>0</b>	<b>0</b>	<b>0</b>	<b>2</b>	<b>3</b>	<b>0</b>	<b>0</b>	<b>0</b>	<b>3</b>	<b>100%</b>	<b>1</b>	<b>100%</b>
<b>Non-Violations</b>																
Rear Axle Violation	0	0	0	0	0	0	0	0	0	0	0	0	0	0%	0	0%
Gate Down - No Train	0	0	0	0	0	0	0	0	0	0	0	0	0	0%	0	60%
Train Activation	0	0	0	0	0	0	0	0	0	0	0	0	0	0%	0	0%
Emergency Vehicle	0	0	0	0	0	0	0	0	0	0	0	0	0	0%	0	40%
Right Turn	0	0	0	0	0	0	0	0	0	0	0	0	0	0%	0	0%
No Violation Occurred	0	0	0	0	0	0	0	0	1	0	0	0	1	100%	0	0%
<b>Total:</b>	<b>0</b>	<b>0</b>	<b>0</b>	<b>0</b>	<b>0</b>	<b>0</b>	<b>0</b>	<b>0</b>	<b>1</b>	<b>0</b>	<b>0</b>	<b>0</b>	<b>1</b>	<b>100%</b>	<b>0</b>	<b>100%</b>
<b>Uncontrollable Non-Issued Violations</b>																
No Plate	0	0	0	0	0	0	0	0	0	0	0	0	0	0%	0	25%
Out of State Plate	0	0	0	0	0	0	0	0	0	0	0	0	0	0%	0	0%
Glare on Plate	0	0	0	0	0	0	0	0	0	0	0	0	0	0%	0	0%
Illegible Plate	0	0	0	0	0	0	0	0	0	0	0	0	0	0%	0	25%
Plate Obstructed	0	0	0	0	0	0	0	0	0	0	0	0	0	0%	0	0%
Windshield Glare	0	0	0	0	0	0	0	1	0	0	0	0	1	40%	0	50%
Driver Obstructed	0	0	0	0	0	0	0	0	0	0	0	0	0	0%	0	0%
Car Obstructed	0	0	0	0	0	0	0	0	0	0	0	0	0	0%	0	0%
No DMV Match Found	0	0	0	0	0	0	0	0	0	0	0	0	0	0%	0	0%
LASD Expired	0	0	0	0	0	0	0	0	0	0	0	0	0	0%	0	0%
LASD Return	0	0	0	0	0	0	0	1	2	0	0	0	2	60%	0	0%
Other	0	0	0	0	0	0	0	0	0	0	0	0	0	0%	0	0%
<b>Total:</b>	<b>0</b>	<b>0</b>	<b>0</b>	<b>0</b>	<b>0</b>	<b>0</b>	<b>0</b>	<b>2</b>	<b>2</b>	<b>0</b>	<b>0</b>	<b>0</b>	<b>3</b>	<b>100%</b>	<b>0</b>	<b>100%</b>
<b>Controllable Non-Issued Violations</b>																
Framing of Plate	0	0	0	0	0	0	0	0	0	0	0	0	0	0	0	0%
Focus / Clarity of Plate	0	0	0	0	0	0	0	0	0	0	0	0	0	0	0	50%
Dark Interior	0	0	0	0	0	0	0	0	0	0	0	0	0	0	0	25%
Framing of Driver	0	0	0	0	0	0	0	0	0	0	0	0	0	0	0	25%
Focus / Clarity of Driver	0	0	0	0	0	0	0	0	0	0	0	0	0	0	0	0%
Framing of Car	0	0	0	0	0	0	0	0	0	0	0	0	0	0	0	0%
Operator/Data Error	0	0	0	0	0	0	0	0	0	0	0	0	0	0	0	0%
Exposure	0	0	0	0	0	0	0	0	0	0	0	0	0	0	0	0%
Equipment Malfunction	0	0	0	0	0	0	0	0	0	0	0	0	0	0	0	0%
ACS Expired	0	0	0	0	0	0	0	0	0	0	0	0	0	0	0	0%
<b>Total:</b>	<b>0</b>	<b>0</b>	<b>0</b>	<b>0</b>	<b>0</b>	<b>0</b>	<b>0</b>	<b>0</b>	<b>0</b>	<b>0</b>	<b>0</b>	<b>0</b>	<b>0</b>	<b>0%</b>	<b>0</b>	<b>100%</b>
<b>Summary Metrics</b>																
Daily Average Vehicle Passes	1,228	1,243	954	1,223	921	1,042	1,073	728	1,188	867	986	1,018	Year to Date Average		2012 Average	
Average Issued Speed	0	0	0	0	0	0	0	0	6	0	0	0	6	7		
Average Issued Red Seconds	0	0	0	0	0	0	0	0	99.9	0	0	0	99.9	19.0		
Citation / Violation Issuance Rate	0%	0%	0%	0%	0%	0%	0%	0%	33%	0%	0%	0%	33%	22%		
Controllable Issuance Rate	0%	0%	0%	0%	0%	0%	0%	0%	100%	0%	0%	0%	100%	40%		



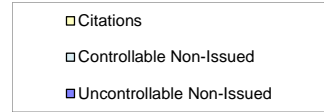
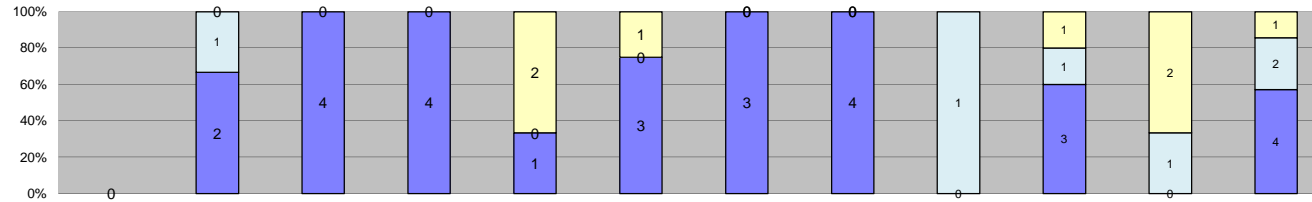
**Los Angeles County MTA Blue Line  
Approach Summary Report  
Location 421: EB Vernon Ave @ Long Beach Ave**



Events	2013												Year to Date Average		2012 Average	
	Jan-13	Feb-13	Mar-13	Apr-13	May-13	Jun-13	Jul-13	Aug-13	Sep-13	Oct-13	Nov-13	Dec-13	Quantity	%	Quantity	%
Non-Violations	2	8	15	11	2	34	0	2	2	1	0	1	8	47%	6	36%
Violations	13	21	13	11	5	8	0	0	2	9	3	3	9	53%	11	64%
<b>Total:</b>	<b>15</b>	<b>29</b>	<b>28</b>	<b>22</b>	<b>7</b>	<b>42</b>	<b>0</b>	<b>2</b>	<b>4</b>	<b>10</b>	<b>3</b>	<b>4</b>	<b>17</b>	<b>100%</b>	<b>17</b>	<b>100%</b>
<b>Violations</b>																
Uncontrollable Non-Issued	8	11	9	10	1	7	0	0	0	2	3	2	6	53%	6	57%
Controllable Non-Issued	0	1	0	0	2	0	0	0	1	6	0	0	3	22%	3	29%
Citations	5	9	4	1	2	1	0	0	1	1	0	1	3	25%	2	14%
<b>Total:</b>	<b>13</b>	<b>21</b>	<b>13</b>	<b>11</b>	<b>5</b>	<b>8</b>	<b>0</b>	<b>0</b>	<b>2</b>	<b>9</b>	<b>3</b>	<b>3</b>	<b>11</b>	<b>100%</b>	<b>11</b>	<b>100%</b>
<b>Non-Violations</b>																
Rear Axle Violation	0	0	0	0	0	0	0	0	0	0	0	0	0	0%	0	3%
Gate Down - No Train	0	0	3	0	0	0	0	0	0	0	0	0	3	26%	0	7%
Train Activation	0	0	0	0	0	0	0	0	0	0	0	0	0	0%	1	10%
Emergency Vehicle	0	0	0	0	0	0	0	0	1	0	0	0	1	9%	0	1%
Right Turn	0	0	0	0	0	0	0	0	0	0	0	0	0	0%	0	0%
No Violation Occurred	2	8	12	11	2	34	0	2	1	1	0	1	7	65%	5	79%
<b>Total:</b>	<b>2</b>	<b>8</b>	<b>15</b>	<b>11</b>	<b>2</b>	<b>34</b>	<b>0</b>	<b>2</b>	<b>2</b>	<b>1</b>	<b>0</b>	<b>1</b>	<b>11</b>	<b>100%</b>	<b>6</b>	<b>100%</b>
<b>Uncontrollable Non-Issued Violations</b>																
No Plate	0	2	1	1	0	1	0	0	0	0	0	0	1	9%	0	4%
Out of State Plate	0	1	0	0	0	0	0	0	0	0	0	0	1	7%	0	3%
Glare on Plate	0	0	0	0	0	0	0	0	0	0	0	0	0	0%	0	0%
Illegible Plate	0	0	0	1	0	0	0	0	0	1	0	0	1	7%	0	0%
Plate Obstructed	1	1	0	0	0	0	0	0	0	0	2	0	1	10%	0	5%
Windshield Glare	0	2	2	1	0	2	0	0	0	0	0	0	2	13%	3	45%
Driver Obstructed	0	0	0	1	0	0	0	0	0	0	0	0	1	7%	0	1%
Car Obstructed	1	1	1	0	1	1	0	0	0	0	0	0	1	7%	1	15%
No DMV Match Found	4	2	1	3	0	1	0	0	0	1	1	2	2	14%	1	23%
LASD Expired	1	0	0	0	0	0	0	0	0	0	0	0	1	7%	0	0%
LASD Return	1	2	4	3	0	2	0	0	0	0	0	0	2	18%	0	4%
Other	0	0	0	0	0	0	0	0	0	0	0	0	0	0%	0	0%
<b>Total:</b>	<b>8</b>	<b>11</b>	<b>9</b>	<b>10</b>	<b>1</b>	<b>7</b>	<b>0</b>	<b>0</b>	<b>0</b>	<b>2</b>	<b>3</b>	<b>2</b>	<b>14</b>	<b>100%</b>	<b>6</b>	<b>100%</b>
<b>Controllable Non-Issued Violations</b>																
Framing of Plate	0	0	0	0	0	0	0	0	0	0	0	0	0	0%	0	3%
Focus / Clarity of Plate	0	0	0	0	0	0	0	0	0	0	0	0	0	0%	0	0%
Dark Interior	0	1	0	0	1	0	0	0	1	0	0	0	1	17%	2	51%
Framing of Driver	0	0	0	0	0	0	0	0	0	0	0	0	0	0%	0	0%
Focus / Clarity of Driver	0	0	0	0	0	0	0	0	0	0	0	0	0	0%	0	5%
Framing of Car	0	0	0	0	0	0	0	0	0	0	0	0	0	0%	0	11%
Operator/Data Error	0	0	0	0	0	0	0	0	0	2	0	0	2	33%	0	5%
Exposure	0	0	0	0	0	0	0	0	0	1	0	0	1	17%	0	8%
Equipment Malfunction	0	0	0	0	1	0	0	0	0	3	0	0	2	33%	1	16%
ACS Expired	0	0	0	0	0	0	0	0	0	0	0	0	0	0%	0	0%
<b>Total:</b>	<b>0</b>	<b>1</b>	<b>0</b>	<b>0</b>	<b>2</b>	<b>0</b>	<b>0</b>	<b>0</b>	<b>1</b>	<b>6</b>	<b>0</b>	<b>0</b>	<b>6</b>	<b>100%</b>	<b>3</b>	<b>100%</b>
<b>Summary Metrics</b>																
Daily Average Vehicle Passes	10,206	11,741	11,090	11,672	10,009	10,742	8,985	7,923	10,521	11,149	9,298	9,673	Year to Date Average		2012 Average	
Average Issued Speed	12	9	15	25	14	16	0	0	11	17	0	11	10,251	12,664		
Average Issued Red Seconds	6.9	79.4	30.1	6.3	6.6	6.2	0	0	6.6	6.6	0	6.2	14	14		
Citation / Violation Issuance Rate	38%	43%	31%	9%	40%	13%	0%	0%	50%	11%	0%	33%	17.2	6.4		
Controllable Issuance Rate	100%	90%	100%	100%	50%	100%	0%	0%	50%	14%	0%	100%	30%	12%		
													78%	42%		



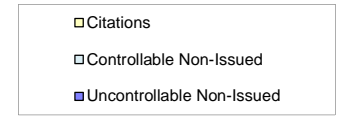
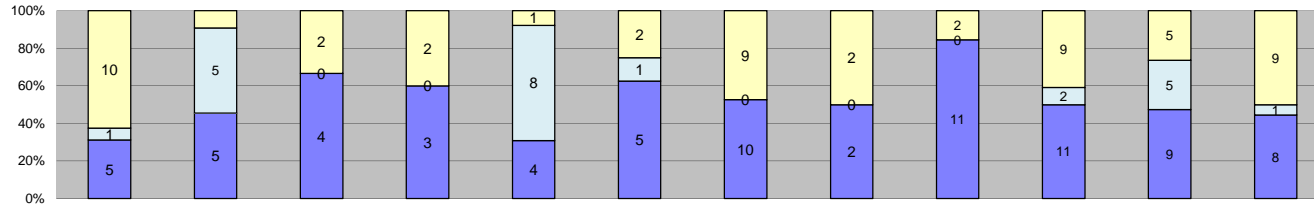
Los Angeles County MTA Blue Line  
 Approach Summary Report  
 Location 821: EB Century Blvd @ Grandee Ave



Events	Jan-13	Feb-13	Mar-13	Apr-13	May-13	Jun-13	Jul-13	Aug-13	Sep-13	Oct-13	Nov-13	Dec-13	Year to Date Average		2012 Average	
													Quantity	%	Quantity	%
Non-Violations	4	9	8	5	8	10	4	3	7	3	3	10	6	62%	4	34%
Violations	0	3	4	4	3	4	3	4	1	5	3	7	4	38%	8	66%
<b>Total:</b>	<b>4</b>	<b>12</b>	<b>12</b>	<b>9</b>	<b>11</b>	<b>14</b>	<b>7</b>	<b>7</b>	<b>8</b>	<b>8</b>	<b>6</b>	<b>17</b>	<b>10</b>	<b>100%</b>	<b>12</b>	<b>100%</b>
<b>Violations</b>																
Uncontrollable Non-Issued	0	2	4	4	1	3	3	4	0	3	0	4	3	54%	5	59%
Controllable Non-Issued	0	1	0	0	0	0	0	0	1	1	1	2	1	21%	1	16%
Citations	0	0	0	0	2	1	0	0	0	1	2	1	1	25%	2	24%
<b>Total:</b>	<b>0</b>	<b>3</b>	<b>4</b>	<b>4</b>	<b>3</b>	<b>4</b>	<b>3</b>	<b>4</b>	<b>1</b>	<b>5</b>	<b>3</b>	<b>7</b>	<b>6</b>	<b>100%</b>	<b>8</b>	<b>100%</b>
<b>Non-Violations</b>																
Rear Axle Violation	0	0	0	0	0	0	0	0	0	0	0	0	0	0%	0	0%
Gate Down - No Train	0	4	3	0	4	0	0	0	0	0	1	7	4	45%	1	29%
Train Activation	0	0	0	0	0	0	0	0	0	0	0	0	0	0%	0	0%
Emergency Vehicle	0	0	0	0	0	0	0	0	0	0	0	0	0	0%	1	16%
Right Turn	0	0	0	0	0	0	0	0	0	0	0	0	0	0%	0	0%
No Violation Occurred	4	5	5	5	4	10	4	3	7	3	2	3	5	55%	2	55%
<b>Total:</b>	<b>4</b>	<b>9</b>	<b>8</b>	<b>5</b>	<b>8</b>	<b>10</b>	<b>4</b>	<b>3</b>	<b>7</b>	<b>3</b>	<b>3</b>	<b>10</b>	<b>8</b>	<b>100%</b>	<b>4</b>	<b>100%</b>
<b>Uncontrollable Non-Issued Violations</b>																
No Plate	0	0	1	0	1	1	0	0	0	0	0	0	1	14%	1	10%
Out of State Plate	0	0	0	0	0	0	0	0	0	0	0	0	0	0%	0	0%
Glare on Plate	0	0	0	0	0	0	0	0	0	0	0	1	1	14%	0	0%
Illegible Plate	0	0	0	0	0	0	0	0	0	1	0	0	1	14%	0	3%
Plate Obstructed	0	0	0	0	0	0	0	0	0	0	0	0	0	0%	0	3%
Windshield Glare	0	1	1	1	0	0	0	2	0	2	0	0	1	19%	2	34%
Driver Obstructed	0	0	0	0	0	0	0	0	0	0	0	0	0	0%	0	2%
Car Obstructed	0	0	0	0	0	0	0	0	0	0	0	0	0	0%	0	5%
No DMV Match Found	0	0	0	2	0	1	0	1	0	0	0	2	2	20%	1	17%
LASD Expired	0	0	0	0	0	0	0	0	0	0	0	0	0	0%	0	5%
LASD Return	0	1	2	1	0	1	3	1	0	0	0	1	1	19%	1	19%
Other	0	0	0	0	0	0	0	0	0	0	0	0	0	0%	0	0%
<b>Total:</b>	<b>0</b>	<b>2</b>	<b>4</b>	<b>4</b>	<b>1</b>	<b>3</b>	<b>3</b>	<b>4</b>	<b>0</b>	<b>3</b>	<b>0</b>	<b>4</b>	<b>7</b>	<b>100%</b>	<b>5</b>	<b>100%</b>
<b>Controllable Non-Issued Violations</b>																
Framing of Plate	0	0	0	0	0	0	0	0	0	0	0	0	0	0%	0	0%
Focus / Clarity of Plate	0	0	0	0	0	0	0	0	0	0	0	0	0	0%	0	0%
Dark Interior	0	0	0	0	0	0	0	0	1	0	0	0	1	33%	1	38%
Framing of Driver	0	0	0	0	0	0	0	0	0	0	0	0	0	0%	0	6%
Focus / Clarity of Driver	0	0	0	0	0	0	0	0	0	0	0	1	1	33%	0	0%
Framing of Car	0	0	0	0	0	0	0	0	0	0	0	0	0	0%	0	25%
Operator/Data Error	0	0	0	0	0	0	0	0	0	0	0	0	0	0%	0	6%
Exposure	0	1	0	0	0	0	0	0	0	1	1	1	1	33%	0	19%
Equipment Malfunction	0	0	0	0	0	0	0	0	0	0	0	0	0	0%	0	6%
ACS Expired	0	0	0	0	0	0	0	0	0	0	0	0	0	0%	0	0%
<b>Total:</b>	<b>0</b>	<b>1</b>	<b>0</b>	<b>0</b>	<b>0</b>	<b>0</b>	<b>0</b>	<b>0</b>	<b>1</b>	<b>1</b>	<b>1</b>	<b>2</b>	<b>3</b>	<b>100%</b>	<b>1</b>	<b>100%</b>
<b>Summary Metrics</b>																
Daily Average Vehicle Passes	6,483	8,924	13,239	9,328	9,718	10,855	12,889	9,630	11,851	10,169	9,285	11,472	Year to Date Average		2012 Average	
Average Issued Speed	0	0	0	0	25	18	0	0	0	27	30	10	10,320		9,888	
Average Issued Red Seconds	0	0	0	0	6.7	7.5	0	0	0	7.1	7.3	7.0	7.1		7.3	
Citation / Violation Issuance Rate	0%	0%	0%	0%	67%	25%	0%	0%	0%	20%	67%	14%	39%		23%	
Controllable Issuance Rate	0%	0%	0%	0%	100%	100%	0%	0%	0%	50%	67%	33%	70%		59%	



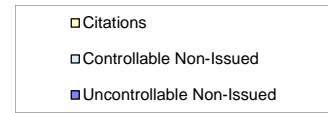
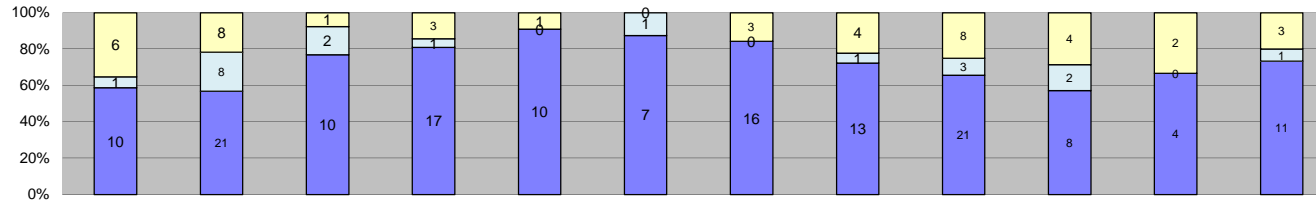
**Los Angeles County MTA Blue Line  
Approach Summary Report  
Location 822: WB Century Blvd @ Grandee Ave**



Events	2013												Year to Date Average		2012 Average	
	Jan-13	Feb-13	Mar-13	Apr-13	May-13	Jun-13	Jul-13	Aug-13	Sep-13	Oct-13	Nov-13	Dec-13	Quantity	%	Quantity	%
Non-Violations	4	2	5	4	11	8	3	4	6	4	0	2	5	27%	5	18%
Violations	16	11	6	5	13	8	19	4	13	22	19	18	13	73%	21	82%
<b>Total:</b>	<b>20</b>	<b>13</b>	<b>11</b>	<b>9</b>	<b>24</b>	<b>16</b>	<b>22</b>	<b>8</b>	<b>19</b>	<b>26</b>	<b>19</b>	<b>20</b>	<b>18</b>	<b>100%</b>	<b>26</b>	<b>100%</b>
<b>Violations</b>																
Uncontrollable Non-Issued	5	5	4	3	4	5	10	2	11	11	9	8	6	45%	11	50%
Controllable Non-Issued	1	5	0	0	8	1	0	0	0	2	5	1	3	23%	4	19%
Citations	10	1	2	2	1	2	9	2	2	9	5	9	5	32%	7	31%
<b>Total:</b>	<b>16</b>	<b>11</b>	<b>6</b>	<b>5</b>	<b>13</b>	<b>8</b>	<b>19</b>	<b>4</b>	<b>13</b>	<b>22</b>	<b>19</b>	<b>18</b>	<b>14</b>	<b>100%</b>	<b>21</b>	<b>100%</b>
<b>Non-Violations</b>																
Rear Axle Violation	0	0	0	0	0	0	0	0	0	0	0	0	0	0%	0	4%
Gate Down - No Train	0	0	0	0	0	0	0	0	0	0	0	0	0	0%	2	33%
Train Activation	0	0	0	0	0	0	0	0	0	0	0	0	0	0%	0	9%
Emergency Vehicle	0	0	0	1	2	1	1	0	1	1	0	1	1	22%	1	13%
Right Turn	0	0	0	0	0	0	0	0	0	0	0	0	0	0%	0	0%
No Violation Occurred	4	2	5	3	9	7	2	4	5	3	0	1	4	78%	2	42%
<b>Total:</b>	<b>4</b>	<b>2</b>	<b>5</b>	<b>4</b>	<b>11</b>	<b>8</b>	<b>3</b>	<b>4</b>	<b>6</b>	<b>4</b>	<b>0</b>	<b>2</b>	<b>5</b>	<b>100%</b>	<b>5</b>	<b>100%</b>
<b>Uncontrollable Non-Issued Violations</b>																
No Plate	0	0	0	0	1	0	1	0	1	1	1	1	1	9%	1	10%
Out of State Plate	1	0	0	0	0	0	0	0	0	1	1	0	1	9%	0	1%
Glare on Plate	0	0	0	0	0	0	0	0	0	0	0	0	0	0%	0	0%
Illegible Plate	0	0	0	0	0	0	1	0	1	0	0	0	1	9%	0	1%
Plate Obstructed	0	0	0	0	0	1	0	0	0	0	2	0	2	13%	1	5%
Windshield Glare	0	1	1	0	1	0	1	1	1	3	3	1	1	13%	4	39%
Driver Obstructed	0	0	1	0	1	0	0	0	0	0	0	0	1	9%	0	2%
Car Obstructed	0	0	0	0	0	0	0	0	0	0	0	0	0	0%	0	3%
No DMV Match Found	2	1	1	1	1	3	5	0	1	3	2	4	2	19%	2	20%
LASD Expired	0	0	0	0	0	0	0	0	0	0	0	0	0	0%	0	0%
LASD Return	2	3	1	2	0	1	2	1	7	3	0	2	2	21%	2	19%
Other	0	0	0	0	0	0	0	0	0	0	0	0	0	0%	0	0%
<b>Total:</b>	<b>5</b>	<b>5</b>	<b>4</b>	<b>3</b>	<b>4</b>	<b>5</b>	<b>10</b>	<b>2</b>	<b>11</b>	<b>11</b>	<b>9</b>	<b>8</b>	<b>12</b>	<b>100%</b>	<b>11</b>	<b>100%</b>
<b>Controllable Non-Issued Violations</b>																
Framing of Plate	0	0	0	0	0	0	0	0	0	0	0	0	0	0%	0	2%
Focus / Clarity of Plate	0	0	0	0	0	0	0	0	0	0	0	0	0	0%	0	0%
Dark Interior	0	0	0	0	1	0	0	0	0	0	0	0	1	12%	1	31%
Framing of Driver	0	1	0	0	0	0	0	0	0	0	0	0	1	12%	1	16%
Focus / Clarity of Driver	0	0	0	0	0	0	0	0	0	1	0	0	1	12%	0	0%
Framing of Car	0	2	0	0	0	0	0	0	0	1	2	0	2	20%	2	35%
Operator/Data Error	0	0	0	0	0	0	0	0	0	0	0	0	0	0%	0	0%
Exposure	1	0	0	0	0	0	0	0	0	0	0	0	1	12%	0	4%
Equipment Malfunction	0	2	0	0	7	1	0	0	0	0	3	1	3	33%	1	12%
ACS Expired	0	0	0	0	0	0	0	0	0	0	0	0	0	0%	0	0%
<b>Total:</b>	<b>1</b>	<b>5</b>	<b>0</b>	<b>0</b>	<b>8</b>	<b>1</b>	<b>0</b>	<b>0</b>	<b>0</b>	<b>2</b>	<b>5</b>	<b>1</b>	<b>8</b>	<b>100%</b>	<b>4</b>	<b>100%</b>
<b>Summary Metrics</b>																
Daily Average Vehicle Passes	6,570	9,462	7,223	9,080	9,717	10,848	10,856	8,609	10,000	10,760	10,188	9,179	Year to Date Average		2012 Average	
Average Issued Speed	23	19	20	27	17	24	20	41	28	16	22	14	22	9,374	20	9,142
Average Issued Red Seconds	7.1	7.6	6.8	7.6	6.8	6.9	7.0	7.8	6.9	7.9	7.0	48.3	10.6		7.4	
Citation / Violation Issuance Rate	63%	9%	33%	40%	8%	25%	47%	50%	15%	41%	26%	50%	34%		31%	
Controllable Issuance Rate	91%	17%	100%	100%	11%	67%	100%	100%	100%	82%	50%	90%	76%		59%	



Los Angeles County MTA Blue Line  
 Approach Summary Report  
 Location 841: EB 103rd St @ Grandee Ave

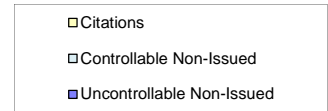
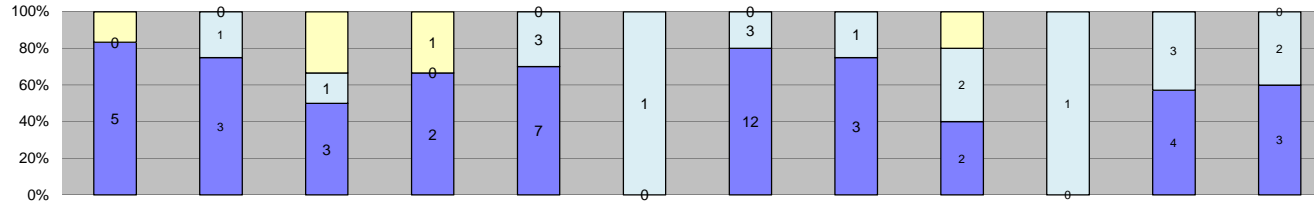


Events	Jan-13	Feb-13	Mar-13	Apr-13	May-13	Jun-13	Jul-13	Aug-13	Sep-13	Oct-13	Nov-13	Dec-13	Year to Date Average		2012 Average	
													Quantity	%	Quantity	%
Non-Violations	15	14	15	16	27	11	6	2	6	4	0	4	11	38%	4	22%
Violations	17	37	13	21	11	8	19	18	32	14	6	15	18	62%	15	78%
<b>Total:</b>	<b>32</b>	<b>51</b>	<b>28</b>	<b>37</b>	<b>38</b>	<b>19</b>	<b>25</b>	<b>20</b>	<b>38</b>	<b>18</b>	<b>6</b>	<b>19</b>	<b>28</b>	<b>100%</b>	<b>19</b>	<b>100%</b>
<b>Violations</b>																
Uncontrollable Non-Issued	10	21	10	17	10	7	16	13	21	8	4	11	12	67%	8	51%
Controllable Non-Issued	1	8	2	1	0	1	0	1	3	2	0	1	2	12%	3	22%
Citations	6	8	1	3	1	0	3	4	8	4	2	3	4	21%	4	27%
<b>Total:</b>	<b>17</b>	<b>37</b>	<b>13</b>	<b>21</b>	<b>11</b>	<b>8</b>	<b>19</b>	<b>18</b>	<b>32</b>	<b>14</b>	<b>6</b>	<b>15</b>	<b>18</b>	<b>100%</b>	<b>15</b>	<b>100%</b>
<b>Non-Violations</b>																
Rear Axle Violation	0	0	0	0	0	0	0	0	0	0	0	0	0	0%	0	0%
Gate Down - No Train	0	0	0	3	0	0	0	0	0	0	0	0	3	21%	1	16%
Train Activation	0	0	0	0	0	0	0	0	0	0	0	0	0	0%	0	0%
Emergency Vehicle	1	1	0	0	5	2	1	1	1	0	0	3	2	13%	1	18%
Right Turn	0	0	0	0	0	0	0	0	0	0	0	0	0	0%	0	0%
No Violation Occurred	14	13	15	13	22	9	5	1	5	4	0	1	9	66%	3	67%
<b>Total:</b>	<b>15</b>	<b>14</b>	<b>15</b>	<b>16</b>	<b>27</b>	<b>11</b>	<b>6</b>	<b>2</b>	<b>6</b>	<b>4</b>	<b>0</b>	<b>4</b>	<b>14</b>	<b>100%</b>	<b>4</b>	<b>100%</b>
<b>Uncontrollable Non-Issued Violations</b>																
No Plate	0	1	1	5	1	0	2	0	0	2	0	1	2	11%	1	17%
Out of State Plate	0	0	0	0	0	0	0	0	0	0	0	0	0	0%	0	1%
Glare on Plate	0	2	0	0	1	0	0	1	2	0	0	1	1	9%	0	5%
Illegible Plate	2	6	0	2	1	0	5	1	3	2	1	2	3	15%	1	7%
Plate Obstructed	0	1	1	0	1	0	0	0	0	0	0	0	1	6%	0	2%
Windshield Glare	4	4	5	5	1	2	4	5	9	1	1	3	4	23%	1	16%
Driver Obstructed	0	1	0	0	0	0	0	0	0	0	0	0	1	6%	1	13%
Car Obstructed	0	0	0	0	0	0	0	0	0	0	0	0	0	0%	0	1%
No DMV Match Found	3	2	1	3	2	3	1	3	3	1	1	4	2	14%	2	25%
LASD Expired	0	0	0	0	0	0	0	0	0	0	0	0	0	0%	0	0%
LASD Return	1	4	2	2	3	2	4	3	4	2	1	0	3	16%	1	9%
Other	0	0	0	0	0	0	0	0	0	0	0	0	0	0%	0	5%
<b>Total:</b>	<b>10</b>	<b>21</b>	<b>10</b>	<b>17</b>	<b>10</b>	<b>7</b>	<b>16</b>	<b>13</b>	<b>21</b>	<b>8</b>	<b>4</b>	<b>11</b>	<b>16</b>	<b>100%</b>	<b>8</b>	<b>100%</b>
<b>Controllable Non-Issued Violations</b>																
Framing of Plate	0	0	0	0	0	0	0	0	1	0	0	0	1	16%	1	27%
Focus / Clarity of Plate	0	0	0	0	0	0	0	0	0	0	0	0	0	0%	0	5%
Dark Interior	0	0	1	1	0	0	0	0	0	0	0	0	1	16%	1	14%
Framing of Driver	0	0	0	0	0	0	0	0	0	0	0	0	0	0%	0	7%
Focus / Clarity of Driver	0	0	0	0	0	0	0	0	0	0	0	0	0	0%	0	2%
Framing of Car	0	3	0	0	0	0	0	0	1	0	0	0	2	31%	1	27%
Operator/Data Error	0	0	0	0	0	0	0	0	0	0	0	0	0	0%	0	0%
Exposure	0	1	0	0	0	1	0	0	0	1	0	0	1	16%	0	7%
Equipment Malfunction	1	4	1	0	0	0	0	1	1	1	0	1	1	22%	0	11%
ACS Expired	0	0	0	0	0	0	0	0	0	0	0	0	0	0%	0	0%
<b>Total:</b>	<b>1</b>	<b>8</b>	<b>2</b>	<b>1</b>	<b>0</b>	<b>1</b>	<b>0</b>	<b>1</b>	<b>3</b>	<b>2</b>	<b>0</b>	<b>1</b>	<b>6</b>	<b>100%</b>	<b>4</b>	<b>100%</b>
<b>Summary Metrics</b>																
Daily Average Vehicle Passes	7,291	8,465	7,365	9,079	9,718	10,752	11,146	9,673	10,085	10,050	9,582	10,827	Year to Date Average		2012 Average	
Average Issued Speed	14	16	11	18	17	0	12	16	17	17	18	16	9,503		9,273	
Average Issued Red Seconds	6.4	18.1	99.9	6.1	5.9	0	7.0	6.8	17.8	6.2	6.1	5.8	16.9		6.4	
Citation / Violation Issuance Rate	35%	22%	8%	14%	9%	0%	16%	22%	25%	29%	33%	20%	21%		29%	
Controllable Issuance Rate	86%	50%	33%	75%	100%	0%	100%	80%	73%	67%	100%	75%	76%		51%	





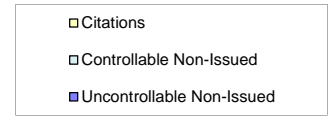
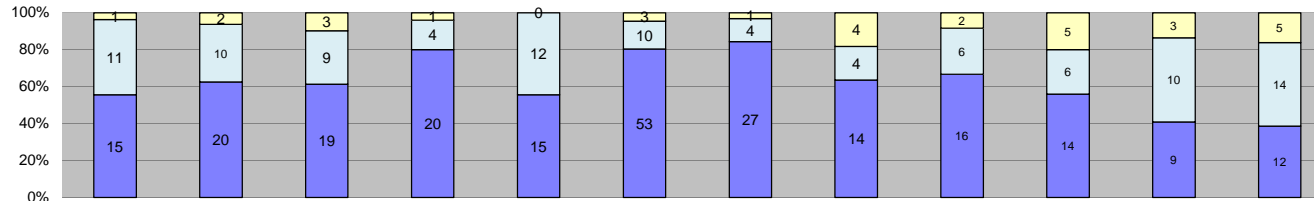
Los Angeles County MTA Blue Line  
 Approach Summary Report  
 Location 981: EB 119th St @ Willowbrook



Events	Jan-13	Feb-13	Mar-13	Apr-13	May-13	Jun-13	Jul-13	Aug-13	Sep-13	Oct-13	Nov-13	Dec-13	Year to Date Average		2012 Average	
													Quantity	%	Quantity	%
Non-Violations	9	4	1	6	4	4	16	7	4	4	2	4	5	49%	4	38%
Violations	6	4	6	3	10	1	15	4	5	1	7	5	6	51%	7	62%
<b>Total:</b>	<b>15</b>	<b>8</b>	<b>7</b>	<b>9</b>	<b>14</b>	<b>5</b>	<b>31</b>	<b>11</b>	<b>9</b>	<b>5</b>	<b>9</b>	<b>9</b>	<b>11</b>	<b>100%</b>	<b>11</b>	<b>100%</b>
<b>Violations</b>																
Uncontrollable Non-Issued	5	3	3	2	7	0	12	3	2	0	4	3	4	59%	3	43%
Controllable Non-Issued	0	1	1	0	3	1	3	1	2	1	3	2	2	24%	3	39%
Citations	1	0	2	1	0	0	0	0	1	0	0	0	1	17%	1	18%
<b>Total:</b>	<b>6</b>	<b>4</b>	<b>6</b>	<b>3</b>	<b>10</b>	<b>1</b>	<b>15</b>	<b>4</b>	<b>5</b>	<b>1</b>	<b>7</b>	<b>5</b>	<b>7</b>	<b>100%</b>	<b>7</b>	<b>100%</b>
<b>Non-Violations</b>																
Rear Axle Violation	0	0	0	0	0	0	0	0	0	0	0	0	0	0%	0	2%
Gate Down - No Train	0	2	0	0	0	2	2	0	0	0	0	0	2	26%	2	53%
Train Activation	0	0	0	0	0	0	0	0	0	0	0	0	0	0%	0	0%
Emergency Vehicle	2	0	0	1	0	0	3	2	1	1	0	2	2	22%	1	22%
Right Turn	0	0	0	0	0	0	0	0	0	0	0	0	0	0%	0	0%
No Violation Occurred	7	2	1	5	4	2	11	5	3	3	2	2	4	51%	1	24%
<b>Total:</b>	<b>9</b>	<b>4</b>	<b>1</b>	<b>6</b>	<b>4</b>	<b>4</b>	<b>16</b>	<b>7</b>	<b>4</b>	<b>4</b>	<b>2</b>	<b>4</b>	<b>8</b>	<b>100%</b>	<b>4</b>	<b>100%</b>
<b>Uncontrollable Non-Issued Violations</b>																
No Plate	0	1	1	0	2	0	0	0	0	0	0	1	1	14%	1	14%
Out of State Plate	0	0	0	0	0	0	0	0	0	0	0	0	0	0%	0	0%
Glare on Plate	0	0	0	0	0	0	0	0	0	0	0	0	0	0%	0	0%
Illegible Plate	0	0	0	0	0	0	2	1	0	0	1	0	1	15%	0	0%
Plate Obstructed	0	0	0	0	0	0	0	0	0	0	0	0	0	0%	0	2%
Windshield Glare	2	2	2	1	2	0	6	2	1	0	0	2	2	24%	1	30%
Driver Obstructed	0	0	0	0	0	0	1	0	0	0	0	0	1	11%	0	2%
Car Obstructed	0	0	0	0	0	0	0	0	0	0	0	0	0	0%	0	0%
No DMV Match Found	1	0	0	1	0	0	0	0	0	0	2	0	1	15%	0	12%
LASD Expired	0	0	0	0	0	0	0	0	0	0	0	0	0	0%	0	0%
LASD Return	2	0	0	0	3	0	3	0	1	0	1	0	2	22%	1	23%
Other	0	0	0	0	0	0	0	0	0	0	0	0	0	0%	1	16%
<b>Total:</b>	<b>5</b>	<b>3</b>	<b>3</b>	<b>2</b>	<b>7</b>	<b>0</b>	<b>12</b>	<b>3</b>	<b>2</b>	<b>0</b>	<b>4</b>	<b>3</b>	<b>9</b>	<b>100%</b>	<b>4</b>	<b>100%</b>
<b>Controllable Non-Issued Violations</b>																
Framing of Plate	0	0	0	0	0	0	0	0	0	0	0	0	0	0%	0	0%
Focus / Clarity of Plate	0	0	0	0	0	0	0	0	0	0	0	0	0	0%	0	0%
Dark Interior	0	1	1	0	3	0	2	0	0	1	1	2	2	33%	1	36%
Framing of Driver	0	0	0	0	0	0	0	0	0	0	0	0	0	0%	0	6%
Focus / Clarity of Driver	0	0	0	0	0	0	1	0	0	0	0	0	1	21%	0	3%
Framing of Car	0	0	0	0	0	0	0	0	0	0	1	0	1	21%	2	55%
Operator/Data Error	0	0	0	0	0	0	0	0	0	0	0	0	0	0%	0	0%
Exposure	0	0	0	0	0	0	0	0	0	0	0	0	0	0%	0	0%
Equipment Malfunction	0	0	0	0	0	1	0	1	2	0	1	0	1	26%	0	0%
ACS Expired	0	0	0	0	0	0	0	0	0	0	0	0	0	0%	0	0%
<b>Total:</b>	<b>0</b>	<b>1</b>	<b>1</b>	<b>0</b>	<b>3</b>	<b>1</b>	<b>3</b>	<b>1</b>	<b>2</b>	<b>1</b>	<b>3</b>	<b>2</b>	<b>5</b>	<b>100%</b>	<b>3</b>	<b>100%</b>
<b>Summary Metrics</b>																
Daily Average Vehicle Passes	5,098	6,570	5,996	6,536	7,279	8,548	8,759	7,908	9,339	8,563	9,328	7,811	Year to Date Average		2012 Average	
Average Issued Speed	7	0	13	6	0	0	0	0	13	0	0	0	7,644		6,156	
Average Issued Red Seconds	99.9	0	8.1	8.2	0	0	0	0	99.9	0	0	0	54.0		22.7	
Citation / Violation Issuance Rate	17%	0%	33%	33%	0%	0%	0%	0%	20%	0%	0%	0%	26%		20%	
Controllable Issuance Rate	100%	0%	67%	100%	0%	0%	0%	0%	33%	0%	0%	0%	75%		27%	



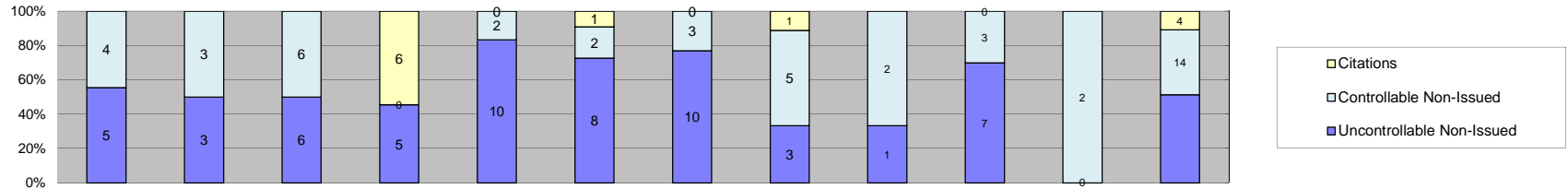
**Los Angeles County MTA Blue Line  
Approach Summary Report  
Location 982: WB 119th St @ Willowbrook**



Events	2013												Year to Date Average		2012 Average	
	Jan-13	Feb-13	Mar-13	Apr-13	May-13	Jun-13	Jul-13	Aug-13	Sep-13	Oct-13	Nov-13	Dec-13	Quantity	%	Quantity	%
Non-Violations	12	8	16	24	7	19	18	14	22	14	11	11	15	33%	16	33%
Violations	27	32	31	25	27	66	32	22	24	25	22	31	30	67%	32	67%
<b>Total:</b>	<b>39</b>	<b>40</b>	<b>47</b>	<b>49</b>	<b>34</b>	<b>85</b>	<b>50</b>	<b>36</b>	<b>46</b>	<b>39</b>	<b>33</b>	<b>42</b>	<b>45</b>	<b>100%</b>	<b>48</b>	<b>100%</b>
<b>Violations</b>																
Uncontrollable Non-Issued	15	20	19	20	15	53	27	14	16	14	9	12	20	64%	17	52%
Controllable Non-Issued	11	10	9	4	12	10	4	4	6	6	10	14	8	27%	8	26%
Citations	1	2	3	1	0	3	1	4	2	5	3	5	3	9%	7	22%
<b>Total:</b>	<b>27</b>	<b>32</b>	<b>31</b>	<b>25</b>	<b>27</b>	<b>66</b>	<b>32</b>	<b>22</b>	<b>24</b>	<b>25</b>	<b>22</b>	<b>31</b>	<b>31</b>	<b>100%</b>	<b>32</b>	<b>100%</b>
<b>Non-Violations</b>																
Rear Axle Violation	0	0	0	0	0	0	0	0	0	0	0	1	1	6%	0	0%
Gate Down - No Train	0	0	0	0	0	0	1	0	0	0	0	0	1	6%	2	13%
Train Activation	2	0	1	0	0	2	2	1	0	0	0	0	2	9%	9	54%
Emergency Vehicle	0	1	1	2	1	1	5	0	1	1	0	1	2	9%	1	5%
Right Turn	0	0	0	0	0	0	0	0	0	0	0	0	0	0%	0	0%
No Violation Occurred	10	7	14	22	6	16	10	13	21	13	11	9	13	71%	4	28%
<b>Total:</b>	<b>12</b>	<b>8</b>	<b>16</b>	<b>24</b>	<b>7</b>	<b>19</b>	<b>18</b>	<b>14</b>	<b>22</b>	<b>14</b>	<b>11</b>	<b>11</b>	<b>18</b>	<b>100%</b>	<b>16</b>	<b>100%</b>
<b>Uncontrollable Non-Issued Violations</b>																
No Plate	1	2	3	4	1	4	2	1	5	0	0	1	2	9%	2	11%
Out of State Plate	0	0	0	0	0	1	0	0	0	0	0	0	1	4%	0	0%
Glare on Plate	0	0	0	0	0	1	0	0	0	0	0	0	1	4%	0	0%
Illegible Plate	2	0	0	2	0	1	1	1	0	3	1	0	2	6%	0	2%
Plate Obstructed	1	0	0	0	0	2	1	1	0	1	0	1	1	4%	1	4%
Windshield Glare	9	13	9	7	9	40	15	8	9	6	7	8	12	45%	7	41%
Driver Obstructed	0	0	2	1	1	0	1	0	1	2	0	0	1	5%	0	1%
Car Obstructed	0	2	1	0	0	0	0	0	0	0	0	0	2	6%	1	7%
No DMV Match Found	2	0	1	1	2	2	3	0	0	2	1	0	2	7%	2	13%
LASD Expired	0	0	0	0	0	0	0	0	0	0	0	0	0	0%	0	0%
LASD Return	0	3	3	5	2	2	4	3	1	0	0	2	3	11%	3	16%
Other	0	0	0	0	0	0	0	0	0	0	0	0	0	0%	1	3%
<b>Total:</b>	<b>15</b>	<b>20</b>	<b>19</b>	<b>20</b>	<b>15</b>	<b>53</b>	<b>27</b>	<b>14</b>	<b>16</b>	<b>14</b>	<b>9</b>	<b>12</b>	<b>26</b>	<b>100%</b>	<b>17</b>	<b>100%</b>
<b>Controllable Non-Issued Violations</b>																
Framing of Plate	0	0	1	0	0	0	0	0	0	0	0	0	1	5%	1	10%
Focus / Clarity of Plate	0	0	0	0	0	0	0	0	1	0	0	0	1	5%	0	3%
Dark Interior	7	7	4	3	7	2	3	2	0	2	5	9	5	23%	2	15%
Framing of Driver	0	0	0	0	0	0	1	0	0	0	0	0	1	5%	1	9%
Focus / Clarity of Driver	0	0	0	0	0	0	0	0	1	1	0	0	1	5%	0	3%
Framing of Car	0	0	3	0	0	0	0	0	0	0	1	2	2	10%	5	50%
Operator/Data Error	0	0	0	0	5	0	0	0	0	0	0	0	5	24%	0	0%
Exposure	0	0	0	0	0	0	0	0	2	0	0	2	2	10%	0	4%
Equipment Malfunction	4	3	1	1	0	8	0	2	2	3	4	1	3	14%	1	5%
ACS Expired	0	0	0	0	0	0	0	0	0	0	0	0	0	0%	0	0%
<b>Total:</b>	<b>11</b>	<b>10</b>	<b>9</b>	<b>4</b>	<b>12</b>	<b>10</b>	<b>4</b>	<b>4</b>	<b>6</b>	<b>6</b>	<b>10</b>	<b>14</b>	<b>21</b>	<b>100%</b>	<b>10</b>	<b>100%</b>
<b>Summary Metrics</b>																
Daily Average Vehicle Passes	4,963	7,130	5,167	5,741	6,311	7,188	7,924	9,595	8,847	9,714	9,485	10,169	Year to Date Average		2012 Average	
Average Issued Speed	10	16	13	11	0	11	11	9	6	13	10	12	7,686	6,296		
Average Issued Red Seconds	9.1	7.0	6.8	8.0	0	7.8	99.9	13.2	7.1	26.8	7.8	7.5	11	9		
Citation / Violation Issuance Rate	4%	6%	10%	4%	0%	5%	3%	18%	8%	20%	14%	16%	18.3	16.3		
Controllable Issuance Rate	8%	17%	25%	20%	0%	23%	20%	50%	25%	45%	23%	26%	10%	21%		
													26%	47%		



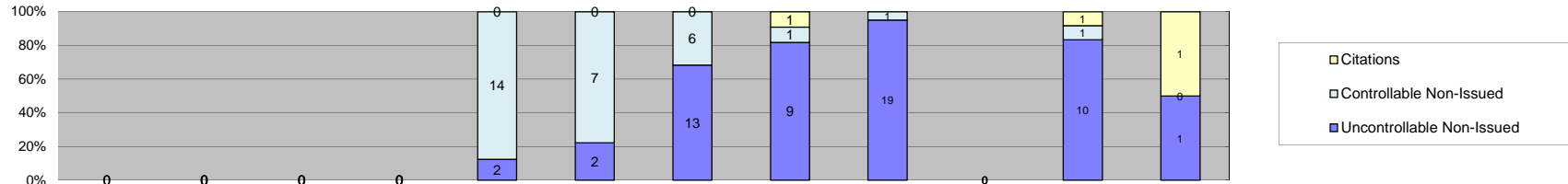
**Los Angeles County MTA Blue Line  
Approach Summary Report  
Location 1051: EB 130th St @ Willowbrook**



Events	2013												Year to Date Average		2012 Average	
	Jan-13	Feb-13	Mar-13	Apr-13	May-13	Jun-13	Jul-13	Aug-13	Sep-13	Oct-13	Nov-13	Dec-13	Quantity	%	Quantity	%
Non-Violations	6	1	6	2	3	4	5	1	2	1	0	14	4	27%	1	11%
Violations	9	6	12	11	12	11	13	9	3	10	2	37	11	73%	8	89%
<b>Total:</b>	<b>15</b>	<b>7</b>	<b>18</b>	<b>13</b>	<b>15</b>	<b>15</b>	<b>18</b>	<b>10</b>	<b>5</b>	<b>11</b>	<b>2</b>	<b>51</b>	<b>15</b>	<b>100%</b>	<b>9</b>	<b>100%</b>
<b>Violations</b>																
Uncontrollable Non-Issued	5	3	6	5	10	8	10	3	1	7	0	19	7	49%	4	48%
Controllable Non-Issued	4	3	6	0	2	2	3	5	2	3	2	14	4	29%	3	38%
Citations	0	0	0	6	0	1	0	1	0	0	0	4	3	21%	1	13%
<b>Total:</b>	<b>9</b>	<b>6</b>	<b>12</b>	<b>11</b>	<b>12</b>	<b>11</b>	<b>13</b>	<b>9</b>	<b>3</b>	<b>10</b>	<b>2</b>	<b>37</b>	<b>14</b>	<b>100%</b>	<b>8</b>	<b>100%</b>
<b>Non-Violations</b>																
Rear Axle Violation	0	0	0	0	0	0	0	0	0	0	0	0	0	0%	0	8%
Gate Down - No Train	0	0	0	0	0	0	0	0	0	0	0	0	0	0%	1	67%
Train Activation	0	0	0	0	0	0	0	0	0	0	0	0	0	0%	0	0%
Emergency Vehicle	0	0	0	0	0	0	0	0	0	0	0	0	0	0%	0	17%
Right Turn	0	0	0	0	0	0	0	0	0	0	0	0	0	0%	0	0%
No Violation Occurred	6	1	6	2	3	4	5	1	2	1	0	14	4	100%	0	8%
<b>Total:</b>	<b>6</b>	<b>1</b>	<b>6</b>	<b>2</b>	<b>3</b>	<b>4</b>	<b>5</b>	<b>1</b>	<b>2</b>	<b>1</b>	<b>0</b>	<b>14</b>	<b>4</b>	<b>100%</b>	<b>1</b>	<b>100%</b>
<b>Uncontrollable Non-Issued Violations</b>																
No Plate	0	0	1	1	1	5	1	0	0	4	0	1	2	17%	0	4%
Out of State Plate	0	0	0	0	0	0	0	0	0	0	0	0	0	0%	0	0%
Glare on Plate	0	0	0	0	0	0	0	0	0	0	0	0	0	0%	0	0%
Illegible Plate	1	0	0	0	0	0	0	0	0	0	0	0	1	8%	0	0%
Plate Obstructed	0	0	1	0	0	0	0	0	0	0	0	1	1	8%	0	2%
Windshield Glare	2	2	3	2	7	2	6	1	1	1	0	10	3	28%	2	58%
Driver Obstructed	0	0	0	1	0	0	0	0	0	0	0	0	1	8%	0	2%
Car Obstructed	0	0	0	0	0	0	0	0	0	0	0	0	0	0%	0	4%
No DMV Match Found	1	0	0	0	0	1	1	0	0	0	0	5	2	17%	1	21%
LASD Expired	0	0	0	0	0	0	0	0	0	0	0	0	0	0%	0	0%
LASD Return	1	1	1	1	2	0	2	2	0	2	0	2	2	13%	0	6%
Other	0	0	0	0	0	0	0	0	0	0	0	0	0	0%	0	2%
<b>Total:</b>	<b>5</b>	<b>3</b>	<b>6</b>	<b>5</b>	<b>10</b>	<b>8</b>	<b>10</b>	<b>3</b>	<b>1</b>	<b>7</b>	<b>0</b>	<b>19</b>	<b>12</b>	<b>100%</b>	<b>4</b>	<b>100%</b>
<b>Controllable Non-Issued Violations</b>																
Framing of Plate	0	0	0	0	0	0	0	0	0	0	0	0	0	0%	0	0%
Focus / Clarity of Plate	0	0	0	0	0	0	0	0	0	0	0	0	0	0%	0	0%
Dark Interior	1	0	0	0	0	0	0	0	0	0	0	4	3	24%	1	21%
Framing of Driver	0	0	0	0	0	0	0	0	0	0	0	0	0	0%	0	8%
Focus / Clarity of Driver	0	0	0	0	0	0	0	0	0	0	0	0	0	0%	0	5%
Framing of Car	0	0	0	0	0	0	0	0	0	2	0	0	2	19%	2	55%
Operator/Data Error	0	0	0	0	2	0	1	0	0	0	0	0	2	14%	0	0%
Exposure	0	0	0	0	0	0	0	1	0	0	1	0	1	10%	0	3%
Equipment Malfunction	3	3	6	0	0	2	2	4	2	1	1	10	3	33%	0	8%
ACS Expired	0	0	0	0	0	0	0	0	0	0	0	0	0	0%	0	0%
<b>Total:</b>	<b>4</b>	<b>3</b>	<b>6</b>	<b>0</b>	<b>2</b>	<b>2</b>	<b>3</b>	<b>5</b>	<b>2</b>	<b>3</b>	<b>2</b>	<b>14</b>	<b>10</b>	<b>100%</b>	<b>3</b>	<b>100%</b>
<b>Summary Metrics</b>																
Daily Average Vehicle Passes	1,970	1,937	2,010	2,446	2,440	2,718	2,763	2,576	2,965	2,599	2,337	2,576	Year to Date Average		2012 Average	
Average Issued Speed	0	0	0	10	0	15	0	20	0	0	0	13	2,445		2,060	
Average Issued Red Seconds	0	0	0	84.2	0	6.4	0	5.9	0	0	0	17.1	28.4		6.5	
Citation / Violation Issuance Rate	0%	0%	0%	55%	0%	9%	0%	11%	0%	0%	0%	11%	21%		13%	
Controllable Issuance Rate	0%	0%	0%	100%	0%	33%	0%	17%	0%	0%	0%	22%	43%		27%	



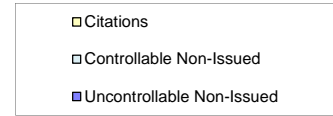
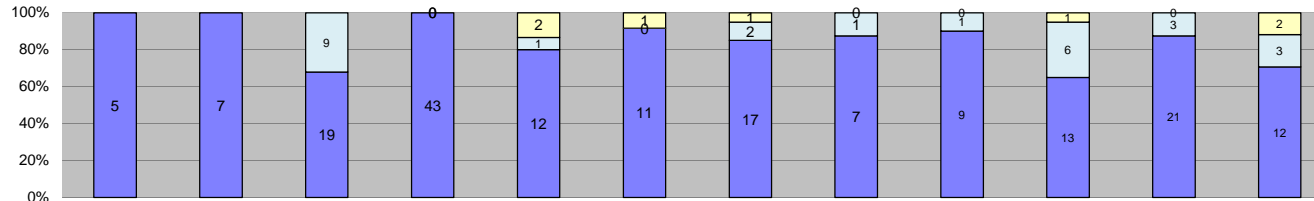
**Los Angeles County MTA Blue Line  
Approach Summary Report  
Location 1052: WB 130th St @ Willowbrook**



Events	Jan-13	Feb-13	Mar-13	Apr-13	May-13	Jun-13	Jul-13	Aug-13	Sep-13	Oct-13	Nov-13	Dec-13	Year to Date Average		2012 Average	
													Quantity	%	Quantity	%
Non-Violations	0	0	0	0	1	8	4	0	2	0	1	1	3	18%	2	9%
Violations	0	0	0	0	16	9	19	11	20	0	12	2	13	82%	17	91%
<b>Total:</b>	<b>0</b>	<b>0</b>	<b>0</b>	<b>0</b>	<b>17</b>	<b>17</b>	<b>23</b>	<b>11</b>	<b>22</b>	<b>0</b>	<b>13</b>	<b>3</b>	<b>16</b>	<b>100%</b>	<b>19</b>	<b>100%</b>
<b>Violations</b>																
Uncontrollable Non-Issued	0	0	0	0	2	2	13	9	19	0	10	1	8	57%	7	37%
Controllable Non-Issued	0	0	0	0	14	7	6	1	1	0	1	0	5	36%	8	46%
Citations	0	0	0	0	0	0	0	1	0	0	1	1	1	7%	3	16%
<b>Total:</b>	<b>0</b>	<b>0</b>	<b>0</b>	<b>0</b>	<b>16</b>	<b>9</b>	<b>19</b>	<b>11</b>	<b>20</b>	<b>0</b>	<b>12</b>	<b>2</b>	<b>14</b>	<b>100%</b>	<b>17</b>	<b>100%</b>
<b>Non-Violations</b>																
Rear Axle Violation	0	0	0	0	0	0	0	0	0	0	0	0	0	0%	0	0%
Gate Down - No Train	0	0	0	0	0	0	0	0	0	0	0	0	0	0%	1	50%
Train Activation	0	0	0	0	0	0	0	0	0	0	0	0	0	0%	0	0%
Emergency Vehicle	0	0	0	0	0	0	0	0	0	0	0	0	0	0%	0	10%
Right Turn	0	0	0	0	0	0	0	0	0	0	0	0	0	0%	0	0%
No Violation Occurred	0	0	0	0	1	8	4	0	2	0	1	1	3	100%	1	40%
<b>Total:</b>	<b>0</b>	<b>0</b>	<b>0</b>	<b>0</b>	<b>1</b>	<b>8</b>	<b>4</b>	<b>0</b>	<b>2</b>	<b>0</b>	<b>1</b>	<b>1</b>	<b>3</b>	<b>100%</b>	<b>2</b>	<b>100%</b>
<b>Uncontrollable Non-Issued Violations</b>																
No Plate	0	0	0	0	0	0	3	3	2	0	1	0	2	14%	1	22%
Out of State Plate	0	0	0	0	0	0	0	0	0	0	0	0	0	0%	0	3%
Glare on Plate	0	0	0	0	1	0	1	0	0	0	0	0	1	6%	0	0%
Illegible Plate	0	0	0	0	0	2	7	2	9	0	5	1	4	27%	0	0%
Plate Obstructed	0	0	0	0	0	0	2	0	0	0	0	0	2	12%	0	3%
Windshield Glare	0	0	0	0	1	0	0	4	6	0	3	0	4	22%	1	19%
Driver Obstructed	0	0	0	0	0	0	0	0	0	0	0	0	0	0%	0	4%
Car Obstructed	0	0	0	0	0	0	0	0	0	0	0	0	0	0%	0	0%
No DMV Match Found	0	0	0	0	0	0	0	0	0	0	1	0	1	6%	3	38%
LASD Expired	0	0	0	0	0	0	0	0	0	0	0	0	0	0%	0	0%
LASD Return	0	0	0	0	0	0	0	0	2	0	0	0	2	12%	1	12%
Other	0	0	0	0	0	0	0	0	0	0	0	0	0	0%	0	0%
<b>Total:</b>	<b>0</b>	<b>0</b>	<b>0</b>	<b>0</b>	<b>2</b>	<b>2</b>	<b>13</b>	<b>9</b>	<b>19</b>	<b>0</b>	<b>10</b>	<b>1</b>	<b>16</b>	<b>100%</b>	<b>7</b>	<b>100%</b>
<b>Controllable Non-Issued Violations</b>																
Framing of Plate	0	0	0	0	0	0	0	0	0	0	0	0	0	0%	1	15%
Focus / Clarity of Plate	0	0	0	0	0	0	0	0	0	0	0	0	0	0%	0	2%
Dark Interior	0	0	0	0	0	0	0	0	1	0	0	0	1	8%	0	3%
Framing of Driver	0	0	0	0	0	0	0	0	0	0	0	0	0	0%	0	2%
Focus / Clarity of Driver	0	0	0	0	0	0	0	0	0	0	0	0	0	0%	0	1%
Framing of Car	0	0	0	0	0	0	0	0	0	0	1	0	1	8%	6	73%
Operator/Data Error	0	0	0	0	0	0	0	0	0	0	0	0	0	0%	0	1%
Exposure	0	0	0	0	0	0	0	1	0	0	0	0	1	8%	0	2%
Equipment Malfunction	0	0	0	0	14	7	6	0	0	0	0	0	9	75%	0	0%
ACS Expired	0	0	0	0	0	0	0	0	0	0	0	0	0	0%	0	0%
<b>Total:</b>	<b>0</b>	<b>0</b>	<b>0</b>	<b>0</b>	<b>14</b>	<b>7</b>	<b>6</b>	<b>1</b>	<b>1</b>	<b>0</b>	<b>1</b>	<b>0</b>	<b>12</b>	<b>100%</b>	<b>8</b>	<b>100%</b>
<b>Summary Metrics</b>																
Daily Average Vehicle Passes	735	470	406	637	1,931	2,151	1,868	2,125	2,353	640	1,619	2,018	Year to Date Average		2012 Average	
Average Issued Speed	0	0	0	0	0	0	0	11	0	0	20	15	15	13		
Average Issued Red Seconds	0	0	0	0	0	0	0	5.5	0	0	5.3	5.3	5.4	12.5		
Citation / Violation Issuance Rate	0%	0%	0%	0%	0%	0%	0%	9%	0%	0%	8%	50%	22%	15%		
Controllable Issuance Rate	0%	0%	0%	0%	0%	0%	0%	50%	0%	0%	50%	100%	67%	25%		



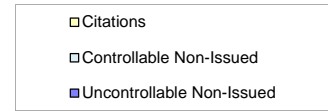
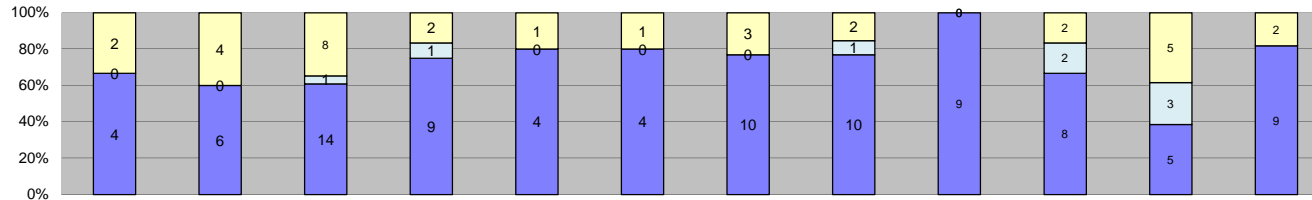
Los Angeles County MTA Blue Line  
 Approach Summary Report  
 Location 1081: EB Stockwell @ Willowbrook



Events	Jan-13	Feb-13	Mar-13	Apr-13	May-13	Jun-13	Jul-13	Aug-13	Sep-13	Oct-13	Nov-13	Dec-13	Year to Date Average		2012 Average	
													Quantity	%	Quantity	%
Non-Violations	12	4	30	17	4	4	5	7	5	6	1	2	8	32%	10	45%
Violations	5	7	28	43	15	12	20	8	10	20	24	17	17	68%	12	55%
<b>Total:</b>	<b>17</b>	<b>11</b>	<b>58</b>	<b>60</b>	<b>19</b>	<b>16</b>	<b>25</b>	<b>15</b>	<b>15</b>	<b>26</b>	<b>25</b>	<b>19</b>	<b>26</b>	<b>100%</b>	<b>23</b>	<b>100%</b>
<b>Violations</b>																
Uncontrollable Non-Issued	5	7	19	43	12	11	17	7	9	13	21	12	15	76%	7	55%
Controllable Non-Issued	0	0	9	0	1	0	2	1	1	6	3	3	3	17%	3	20%
Citations	0	0	0	0	2	1	1	0	0	1	0	2	1	7%	3	25%
<b>Total:</b>	<b>5</b>	<b>7</b>	<b>28</b>	<b>43</b>	<b>15</b>	<b>12</b>	<b>20</b>	<b>8</b>	<b>10</b>	<b>20</b>	<b>24</b>	<b>17</b>	<b>19</b>	<b>100%</b>	<b>12</b>	<b>100%</b>
<b>Non-Violations</b>																
Rear Axle Violation	0	0	0	0	0	0	0	0	1	0	0	0	1	9%	0	0%
Gate Down - No Train	0	1	0	0	0	0	0	0	0	0	0	0	1	9%	0	4%
Train Activation	0	0	0	0	0	0	0	0	0	0	0	0	0	0%	0	1%
Emergency Vehicle	0	0	1	0	0	0	0	0	0	1	0	0	1	9%	0	2%
Right Turn	0	0	0	0	0	0	0	0	0	0	0	0	0	0%	0	0%
No Violation Occurred	12	3	29	17	4	4	5	7	4	5	1	2	8	72%	10	93%
<b>Total:</b>	<b>12</b>	<b>4</b>	<b>30</b>	<b>17</b>	<b>4</b>	<b>4</b>	<b>5</b>	<b>7</b>	<b>5</b>	<b>6</b>	<b>1</b>	<b>2</b>	<b>11</b>	<b>100%</b>	<b>10</b>	<b>100%</b>
<b>Uncontrollable Non-Issued Violations</b>																
No Plate	0	1	0	3	1	1	3	2	3	0	5	2	2	10%	1	10%
Out of State Plate	0	0	0	0	0	0	1	0	0	0	1	0	1	4%	0	0%
Glare on Plate	1	2	3	0	1	0	1	0	0	1	0	0	2	6%	0	1%
Illegible Plate	2	1	2	9	1	0	3	3	3	3	8	7	4	16%	0	6%
Plate Obstructed	2	0	0	1	0	0	0	0	0	0	0	0	2	6%	0	6%
Windshield Glare	0	3	11	18	5	8	7	1	2	6	3	2	6	25%	3	38%
Driver Obstructed	0	0	0	1	0	0	1	0	0	0	0	0	1	4%	0	1%
Car Obstructed	0	0	3	0	0	0	0	0	0	0	0	0	3	12%	0	2%
No DMV Match Found	0	0	0	6	1	1	0	0	0	3	2	1	2	10%	1	17%
LASD Expired	0	0	0	0	0	0	0	0	0	0	0	0	0	0%	0	0%
LASD Return	0	0	0	5	3	1	1	1	1	0	2	0	2	8%	1	12%
Other	0	0	0	0	0	0	0	0	0	0	0	0	0	0%	0	6%
<b>Total:</b>	<b>5</b>	<b>7</b>	<b>19</b>	<b>43</b>	<b>12</b>	<b>11</b>	<b>17</b>	<b>7</b>	<b>9</b>	<b>13</b>	<b>21</b>	<b>12</b>	<b>24</b>	<b>100%</b>	<b>7</b>	<b>100%</b>
<b>Controllable Non-Issued Violations</b>																
Framing of Plate	0	0	0	0	0	0	0	0	0	0	0	0	0	0%	0	3%
Focus / Clarity of Plate	0	0	7	0	0	0	0	0	0	1	0	0	4	47%	0	3%
Dark Interior	0	0	0	0	1	0	2	0	0	2	2	2	2	21%	1	20%
Framing of Driver	0	0	0	0	0	0	0	0	0	0	0	0	0	0%	0	17%
Focus / Clarity of Driver	0	0	2	0	0	0	0	0	0	2	0	1	2	20%	0	7%
Framing of Car	0	0	0	0	0	0	0	1	1	1	1	0	1	12%	1	40%
Operator/Data Error	0	0	0	0	0	0	0	0	0	0	0	0	0	0%	0	0%
Exposure	0	0	0	0	0	0	0	0	0	0	0	0	0	0%	0	10%
Equipment Malfunction	0	0	0	0	0	0	0	0	0	0	0	0	0	0%	0	0%
ACS Expired	0	0	0	0	0	0	0	0	0	0	0	0	0	0%	0	0%
<b>Total:</b>	<b>0</b>	<b>0</b>	<b>9</b>	<b>0</b>	<b>1</b>	<b>0</b>	<b>2</b>	<b>1</b>	<b>1</b>	<b>6</b>	<b>3</b>	<b>3</b>	<b>8</b>	<b>100%</b>	<b>3</b>	<b>100%</b>
<b>Summary Metrics</b>																
Daily Average Vehicle Passes	4,014	4,471	4,161	4,114	4,234	4,521	4,502	4,879	4,685	5,254	5,341	4,847	Year to Date Average		2012 Average	
Average Issued Speed	0	0	0	0	12	14	18	0	0	39	0	11	4,585		4,395	
Average Issued Red Seconds	0	0	0	0	99.9	41.0	6.5	0	0	7.4	0	6.3	32.2		10.7	
Citation / Violation Issuance Rate	0%	0%	0%	0%	13%	8%	5%	0%	0%	5%	0%	12%	9%		26%	
Controllable Issuance Rate	0%	0%	0%	0%	67%	100%	33%	0%	0%	14%	0%	40%	51%		53%	



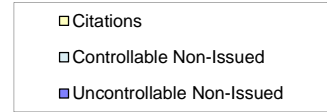
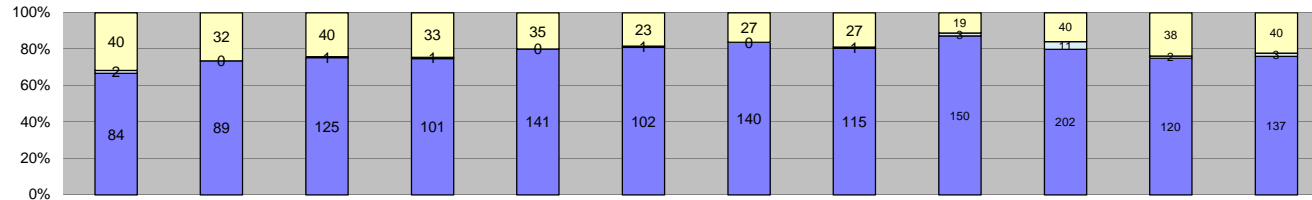
Los Angeles County MTA Blue Line  
 Approach Summary Report  
 Location 1082: WB Stockwell @ Willowbrook



Events	2013												Year to Date Average		2012 Average	
	Jan-13	Feb-13	Mar-13	Apr-13	May-13	Jun-13	Jul-13	Aug-13	Sep-13	Oct-13	Nov-13	Dec-13	Quantity	%	Quantity	%
Non-Violations	2	0	5	22	2	3	2	2	1	5	0	4	5	30%	1	13%
Violations	6	10	23	12	5	5	13	13	9	12	13	11	11	70%	10	87%
<b>Total:</b>	<b>8</b>	<b>10</b>	<b>28</b>	<b>34</b>	<b>7</b>	<b>8</b>	<b>15</b>	<b>15</b>	<b>10</b>	<b>17</b>	<b>13</b>	<b>15</b>	<b>16</b>	<b>100%</b>	<b>11</b>	<b>100%</b>
<b>Violations</b>																
Uncontrollable Non-Issued	4	6	14	9	4	4	10	10	9	8	5	9	8	63%	5	49%
Controllable Non-Issued	0	0	1	1	0	0	0	1	0	2	3	0	2	13%	3	28%
Citations	2	4	8	2	1	1	3	2	0	2	5	2	3	24%	2	23%
<b>Total:</b>	<b>6</b>	<b>10</b>	<b>23</b>	<b>12</b>	<b>5</b>	<b>5</b>	<b>13</b>	<b>13</b>	<b>9</b>	<b>12</b>	<b>13</b>	<b>11</b>	<b>12</b>	<b>100%</b>	<b>10</b>	<b>100%</b>
<b>Non-Violations</b>																
Rear Axle Violation	0	0	0	0	0	0	0	0	0	0	0	0	0	0%	0	0%
Gate Down - No Train	0	0	0	0	0	0	0	0	0	0	0	0	0	0%	1	71%
Train Activation	0	0	0	0	0	0	0	0	0	0	0	0	0	0%	0	0%
Emergency Vehicle	0	0	0	0	0	0	0	1	0	1	0	0	1	18%	0	18%
Right Turn	0	0	0	0	0	0	0	0	0	0	0	0	0	0%	0	0%
No Violation Occurred	2	0	5	22	2	3	2	1	1	4	0	4	5	82%	0	12%
<b>Total:</b>	<b>2</b>	<b>0</b>	<b>5</b>	<b>22</b>	<b>2</b>	<b>3</b>	<b>2</b>	<b>2</b>	<b>1</b>	<b>5</b>	<b>0</b>	<b>4</b>	<b>6</b>	<b>100%</b>	<b>1</b>	<b>100%</b>
<b>Uncontrollable Non-Issued Violations</b>																
No Plate	1	3	6	0	0	0	2	0	1	0	1	3	2	16%	1	21%
Out of State Plate	0	0	0	0	0	0	0	1	0	0	0	0	1	6%	0	2%
Glare on Plate	0	0	0	0	0	0	0	0	0	0	0	0	0	0%	0	2%
Illegible Plate	2	1	1	3	0	0	1	2	3	2	3	5	2	15%	0	0%
Plate Obstructed	0	1	1	1	0	0	0	0	0	0	0	0	1	6%	0	5%
Windshield Glare	0	1	1	4	2	4	4	1	2	4	1	0	2	15%	1	28%
Driver Obstructed	0	0	1	1	0	0	1	0	0	0	0	0	1	6%	0	0%
Car Obstructed	0	0	1	0	0	0	0	0	0	0	0	0	1	6%	0	7%
No DMV Match Found	1	0	3	0	2	0	2	4	2	1	0	0	2	14%	1	19%
LASD Expired	0	0	0	0	0	0	0	0	0	0	0	1	1	6%	0	0%
LASD Return	0	0	0	0	0	0	0	2	1	1	0	0	1	9%	0	9%
Other	0	0	0	0	0	0	0	0	0	0	0	0	0	0%	0	7%
<b>Total:</b>	<b>4</b>	<b>6</b>	<b>14</b>	<b>9</b>	<b>4</b>	<b>4</b>	<b>10</b>	<b>10</b>	<b>9</b>	<b>8</b>	<b>5</b>	<b>9</b>	<b>16</b>	<b>100%</b>	<b>5</b>	<b>100%</b>
<b>Controllable Non-Issued Violations</b>																
Framing of Plate	0	0	1	0	0	0	0	0	0	0	0	0	1	20%	1	18%
Focus / Clarity of Plate	0	0	0	0	0	0	0	0	0	0	0	0	0	0%	0	3%
Dark Interior	0	0	0	1	0	0	0	1	0	0	0	0	1	20%	0	12%
Framing of Driver	0	0	0	0	0	0	0	0	0	0	0	0	0	0%	0	6%
Focus / Clarity of Driver	0	0	0	0	0	0	0	0	0	0	0	0	0	0%	0	3%
Framing of Car	0	0	0	0	0	0	0	0	0	2	2	0	2	40%	2	55%
Operator/Data Error	0	0	0	0	0	0	0	0	0	0	1	0	1	20%	0	0%
Exposure	0	0	0	0	0	0	0	0	0	0	0	0	0	0%	0	3%
Equipment Malfunction	0	0	0	0	0	0	0	0	0	0	0	0	0	0%	0	0%
ACS Expired	0	0	0	0	0	0	0	0	0	0	0	0	0	0%	0	0%
<b>Total:</b>	<b>0</b>	<b>0</b>	<b>1</b>	<b>1</b>	<b>0</b>	<b>0</b>	<b>0</b>	<b>1</b>	<b>0</b>	<b>2</b>	<b>3</b>	<b>0</b>	<b>5</b>	<b>100%</b>	<b>3</b>	<b>100%</b>
<b>Summary Metrics</b>																
Daily Average Vehicle Passes	3,697	3,995	3,521	3,811	3,856	4,188	4,189	4,210	4,052	5,660	3,374	4,202	Year to Date Average		2012 Average	
Average Issued Speed	9	13	14	21	18	19	12	12	0	15	16	13	4,063	4,309		
Average Issued Red Seconds	53.6	30.3	30.0	8.0	6.8	6.2	9.2	53.3	0	54.5	27.6	7.1	26.0	26.2		
Citation / Violation Issuance Rate	33%	40%	35%	17%	20%	20%	23%	15%	0%	17%	38%	18%	25%	20%		
Controllable Issuance Rate	100%	100%	89%	67%	100%	100%	100%	67%	0%	50%	63%	100%	85%	37%		



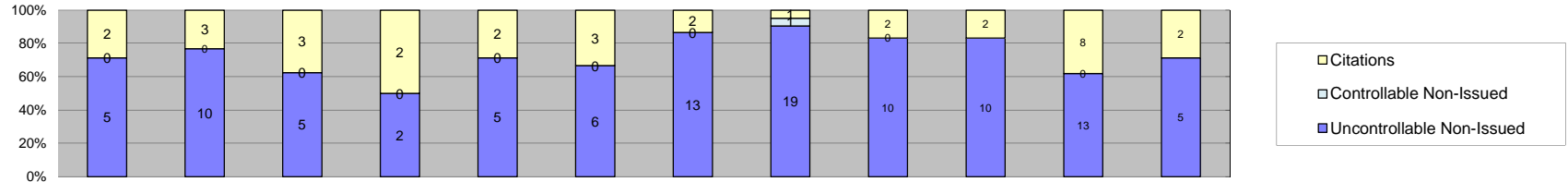
**Los Angeles County MTA Blue Line  
Approach Summary Report  
Location 2003: EB to NB Washington @ Los Angeles**



Events	2013												Year to Date Average		2012 Average	
	Jan-13	Feb-13	Mar-13	Apr-13	May-13	Jun-13	Jul-13	Aug-13	Sep-13	Oct-13	Nov-13	Dec-13	Quantity	%	Quantity	%
Non-Violations	611	611	948	958	976	892	1,087	1,007	915	1,107	1,000	1,066	932	85%	574	82%
Violations	126	121	166	135	176	126	167	143	172	253	160	180	160	15%	127	18%
<b>Total:</b>	<b>737</b>	<b>732</b>	<b>1,114</b>	<b>1,093</b>	<b>1,152</b>	<b>1,018</b>	<b>1,254</b>	<b>1,150</b>	<b>1,087</b>	<b>1,360</b>	<b>1,160</b>	<b>1,246</b>	<b>1,092</b>	<b>100%</b>	<b>700</b>	<b>100%</b>
<b>Violations</b>																
Uncontrollable Non-Issued	84	89	125	101	141	102	140	115	150	202	120	137	126	78%	70	55%
Controllable Non-Issued	2	0	1	1	0	1	0	1	3	11	2	3	3	2%	17	13%
Citations	40	32	40	33	35	23	27	27	19	40	38	40	33	20%	40	32%
<b>Total:</b>	<b>126</b>	<b>121</b>	<b>166</b>	<b>135</b>	<b>176</b>	<b>126</b>	<b>167</b>	<b>143</b>	<b>172</b>	<b>253</b>	<b>160</b>	<b>180</b>	<b>161</b>	<b>100%</b>	<b>127</b>	<b>100%</b>
<b>Non-Violations</b>																
Rear Axle Violation	20	3	0	1	0	0	0	0	0	0	0	0	8	1%	5	1%
Gate Down - No Train	0	0	0	0	0	0	0	0	0	0	0	0	0	0%	0	0%
Train Activation	0	0	0	0	0	0	0	0	0	0	0	0	0	0%	0	0%
Emergency Vehicle	2	1	5	0	1	5	3	5	6	6	5	3	4	0%	2	0%
Right Turn	0	0	0	0	0	0	0	0	0	0	0	0	0	0%	0	0%
No Violation Occurred	589	607	943	957	975	887	1,084	1,002	909	1,101	995	1,063	926	99%	567	99%
<b>Total:</b>	<b>611</b>	<b>611</b>	<b>948</b>	<b>958</b>	<b>976</b>	<b>892</b>	<b>1,087</b>	<b>1,007</b>	<b>915</b>	<b>1,107</b>	<b>1,000</b>	<b>1,066</b>	<b>938</b>	<b>100%</b>	<b>574</b>	<b>100%</b>
<b>Uncontrollable Non-Issued Violations</b>																
No Plate	18	13	20	13	20	13	18	15	18	31	8	16	17	13%	8	12%
Out of State Plate	2	4	2	3	3	4	3	5	1	5	1	6	3	3%	2	3%
Glare on Plate	0	0	0	1	0	1	0	0	0	2	0	0	1	1%	0	1%
Illegible Plate	7	9	7	9	17	5	19	12	11	13	16	17	12	9%	1	1%
Plate Obstructed	9	7	9	2	1	0	0	1	1	4	4	3	4	3%	3	4%
Windshield Glare	10	10	35	22	36	30	31	30	58	62	44	26	33	25%	14	20%
Driver Obstructed	1	2	2	2	7	4	4	1	6	8	2	3	4	3%	3	4%
Car Obstructed	8	5	13	2	1	4	4	1	3	4	3	7	5	4%	13	18%
No DMV Match Found	9	15	10	8	12	8	13	11	10	15	9	22	12	9%	9	13%
LASD Expired	0	0	0	0	0	0	0	0	0	0	0	3	3	2%	0	0%
LASD Return	20	24	27	39	44	33	48	39	42	58	33	34	37	28%	12	18%
Other	0	0	0	0	0	0	0	0	0	0	0	0	0	0%	4	5%
<b>Total:</b>	<b>84</b>	<b>89</b>	<b>125</b>	<b>101</b>	<b>141</b>	<b>102</b>	<b>140</b>	<b>115</b>	<b>150</b>	<b>202</b>	<b>120</b>	<b>137</b>	<b>130</b>	<b>100%</b>	<b>70</b>	<b>100%</b>
<b>Controllable Non-Issued Violations</b>																
Framing of Plate	0	0	0	0	0	0	0	0	0	0	0	0	0	0%	1	6%
Focus / Clarity of Plate	0	0	0	0	0	0	0	1	0	5	0	0	3	43%	1	3%
Dark Interior	0	0	0	1	0	1	0	0	1	5	1	1	2	24%	2	9%
Framing of Driver	0	0	0	0	0	0	0	0	0	0	0	0	0	0%	0	1%
Focus / Clarity of Driver	0	0	0	0	0	0	0	0	1	0	0	0	1	14%	0	0%
Framing of Car	0	0	0	0	0	0	0	0	0	0	0	0	0	0%	0	1%
Operator/Data Error	0	0	0	0	0	0	0	0	0	0	0	0	0	0%	7	42%
Exposure	2	0	1	0	0	0	0	0	1	1	1	2	1	19%	1	6%
Equipment Malfunction	0	0	0	0	0	0	0	0	0	0	0	0	0	0%	5	29%
ACS Expired	0	0	0	0	0	0	0	0	0	0	0	0	0	0%	0	0%
<b>Total:</b>	<b>2</b>	<b>0</b>	<b>1</b>	<b>1</b>	<b>0</b>	<b>1</b>	<b>0</b>	<b>1</b>	<b>3</b>	<b>11</b>	<b>2</b>	<b>3</b>	<b>7</b>	<b>100%</b>	<b>17</b>	<b>100%</b>
<b>Summary Metrics</b>																
Daily Average Vehicle Passes	1,103	1,172	1,077	1,174	1,247	1,351	1,395	1,298	1,533	1,620	1,597	1,115	Year to Date Average		2012 Average	
Average Issued Speed	19	18	19	17	18	18	19	18	17	19	18	18	18	18		
Average Issued Red Seconds	6.2	3.7	3.1	5.1	5.2	7.0	10.3	1.9	8.4	2.5	3.0	0.5	4.8	5.3		
Citation / Violation Issuance Rate	32%	26%	24%	24%	20%	18%	16%	19%	11%	16%	24%	22%	21%	33%		
Controllable Issuance Rate	95%	100%	98%	97%	100%	96%	100%	96%	86%	78%	95%	93%	95%	78%		



# Los Angeles County MTA Blue Line Approach Summary Report Location 2008 WB to SB Washington @ Los Angeles

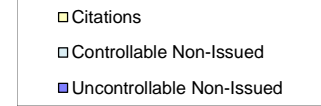
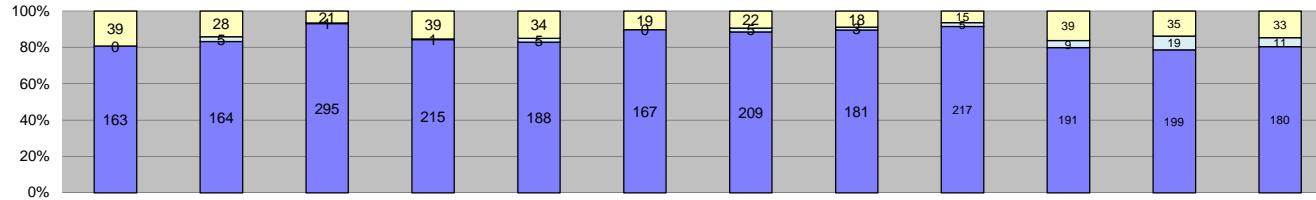


Events	Jan-13	Feb-13	Mar-13	Apr-13	May-13	Jun-13	Jul-13	Aug-13	Sep-13	Oct-13	Nov-13	Dec-13	Year to Date Average		2012 Average	
													Quantity	%	Quantity	%
Non-Violations	202	186	213	211	234	244	278	239	209	244	176	209	220	95%	154	92%
Violations	7	13	8	4	7	9	15	21	12	12	21	7	11	5%	14	8%
<b>Total:</b>	<b>209</b>	<b>199</b>	<b>221</b>	<b>215</b>	<b>241</b>	<b>253</b>	<b>293</b>	<b>260</b>	<b>221</b>	<b>256</b>	<b>197</b>	<b>216</b>	<b>232</b>	<b>100%</b>	<b>168</b>	<b>100%</b>
<b>Violations</b>																
Uncontrollable Non-Issued	5	10	5	2	5	6	13	19	10	10	13	5	9	70%	8	57%
Controllable Non-Issued	0	0	0	0	0	0	0	1	0	0	0	0	1	8%	1	4%
Citations	2	3	3	2	2	3	2	1	2	2	8	2	3	22%	5	39%
<b>Total:</b>	<b>7</b>	<b>13</b>	<b>8</b>	<b>4</b>	<b>7</b>	<b>9</b>	<b>15</b>	<b>21</b>	<b>12</b>	<b>12</b>	<b>21</b>	<b>7</b>	<b>12</b>	<b>100%</b>	<b>14</b>	<b>100%</b>
<b>Non-Violations</b>																
Rear Axle Violation	0	0	0	0	0	0	0	0	0	0	0	0	0	0%	0	0%
Gate Down - No Train	0	0	0	0	0	0	0	0	0	0	0	0	0	0%	0	0%
Train Activation	1	0	0	0	0	0	0	0	0	0	0	0	1	0%	0	0%
Emergency Vehicle	0	2	2	0	2	1	7	3	4	3	4	2	3	1%	1	1%
Right Turn	0	0	0	0	0	0	0	0	0	0	0	0	0	0%	0	0%
No Violation Occurred	201	184	211	211	232	243	271	236	205	241	172	207	218	98%	152	99%
<b>Total:</b>	<b>202</b>	<b>186</b>	<b>213</b>	<b>211</b>	<b>234</b>	<b>244</b>	<b>278</b>	<b>239</b>	<b>209</b>	<b>244</b>	<b>176</b>	<b>209</b>	<b>222</b>	<b>100%</b>	<b>154</b>	<b>100%</b>
<b>Uncontrollable Non-Issued Violations</b>																
No Plate	0	1	1	0	1	2	1	6	0	1	1	2	2	13%	1	10%
Out of State Plate	0	0	0	0	0	0	0	0	0	0	0	0	0	0%	0	2%
Glare on Plate	0	0	0	0	0	0	0	0	0	1	0	0	1	7%	0	0%
Illegible Plate	0	1	1	0	0	0	2	0	1	0	4	0	2	13%	0	0%
Plate Obstructed	0	0	0	0	0	1	0	0	0	0	0	0	1	7%	0	1%
Windshield Glare	0	1	0	1	1	0	1	1	2	1	0	0	1	8%	1	10%
Driver Obstructed	1	1	1	0	0	1	3	2	1	0	1	2	1	10%	0	4%
Car Obstructed	1	1	0	0	0	0	0	1	0	0	0	0	1	7%	3	35%
No DMV Match Found	2	2	2	0	2	1	5	5	1	1	5	0	3	18%	1	18%
LASD Expired	0	0	0	0	0	0	0	0	0	0	0	0	0	0%	0	1%
LASD Return	1	3	0	1	1	1	1	4	5	6	2	1	2	17%	1	17%
Other	0	0	0	0	0	0	0	0	0	0	0	0	0	0%	0	1%
<b>Total:</b>	<b>5</b>	<b>10</b>	<b>5</b>	<b>2</b>	<b>5</b>	<b>6</b>	<b>13</b>	<b>19</b>	<b>10</b>	<b>10</b>	<b>13</b>	<b>5</b>	<b>14</b>	<b>100%</b>	<b>8</b>	<b>100%</b>
<b>Controllable Non-Issued Violations</b>																
Framing of Plate	0	0	0	0	0	0	0	0	0	0	0	0	0	0%	0	0%
Focus / Clarity of Plate	0	0	0	0	0	0	0	0	0	0	0	0	0	0%	0	0%
Dark Interior	0	0	0	0	0	0	0	1	0	0	0	0	1	100%	0	50%
Framing of Driver	0	0	0	0	0	0	0	0	0	0	0	0	0	0%	0	17%
Focus / Clarity of Driver	0	0	0	0	0	0	0	0	0	0	0	0	0	0%	0	0%
Framing of Car	0	0	0	0	0	0	0	0	0	0	0	0	0	0%	0	0%
Operator/Data Error	0	0	0	0	0	0	0	0	0	0	0	0	0	0%	0	0%
Exposure	0	0	0	0	0	0	0	0	0	0	0	0	0	0%	0	33%
Equipment Malfunction	0	0	0	0	0	0	0	0	0	0	0	0	0	0%	0	0%
ACS Expired	0	0	0	0	0	0	0	0	0	0	0	0	0	0%	0	0%
<b>Total:</b>	<b>0</b>	<b>0</b>	<b>0</b>	<b>0</b>	<b>0</b>	<b>0</b>	<b>0</b>	<b>1</b>	<b>0</b>	<b>0</b>	<b>0</b>	<b>0</b>	<b>1</b>	<b>100%</b>	<b>1</b>	<b>100%</b>
<b>Summary Metrics</b>																
Daily Average Vehicle Passes	234	255	266	256	318	351	405	243	341	259	308	339	Year to Date Average		2012 Average	
Average Issued Speed	26	22	23	22	17	18	23	17	20	19	19	22	298		264	
Average Issued Red Seconds	0.9	0.2	0.7	26.6	50.2	17.5	25.3	0.2	72.9	0.9	4.8	0.9	16.7		14.6	
Citation / Violation Issuance Rate	29%	23%	38%	50%	29%	33%	13%	5%	17%	17%	38%	29%	27%		38%	
Controllable Issuance Rate	100%	100%	100%	100%	100%	100%	100%	50%	100%	100%	100%	100%	96%		94%	





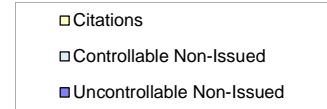
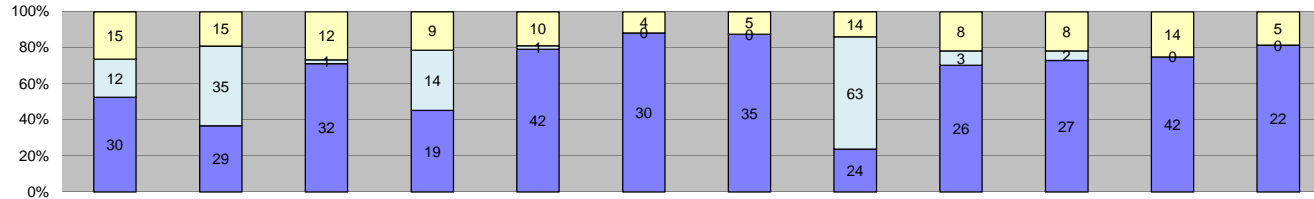
Los Angeles County MTA Blue Line  
 Approach Summary Report  
 Location 2010: EB to NB Washington @ San Pedro



Events	Jan-13	Feb-13	Mar-13	Apr-13	May-13	Jun-13	Jul-13	Aug-13	Sep-13	Oct-13	Nov-13	Dec-13	Year to Date Average		2012 Average	
													Quantity	%	Quantity	%
Non-Violations	313	317	371	342	301	331	311	341	318	369	339	383	336	59%	262	64%
Violations	202	197	317	255	227	186	236	202	237	239	253	224	231	41%	147	36%
<b>Total:</b>	<b>515</b>	<b>514</b>	<b>688</b>	<b>597</b>	<b>528</b>	<b>517</b>	<b>547</b>	<b>543</b>	<b>555</b>	<b>608</b>	<b>592</b>	<b>607</b>	<b>568</b>	<b>100%</b>	<b>408</b>	<b>100%</b>
<b>Violations</b>																
Uncontrollable Non-Issued	163	164	295	215	188	167	209	181	217	191	199	180	197	85%	94	64%
Controllable Non-Issued	0	5	1	1	5	0	5	3	5	9	19	11	6	3%	7	4%
Citations	39	28	21	39	34	19	22	18	15	39	35	33	29	12%	46	31%
<b>Total:</b>	<b>202</b>	<b>197</b>	<b>317</b>	<b>255</b>	<b>227</b>	<b>186</b>	<b>236</b>	<b>202</b>	<b>237</b>	<b>239</b>	<b>253</b>	<b>224</b>	<b>232</b>	<b>100%</b>	<b>147</b>	<b>100%</b>
<b>Non-Violations</b>																
Rear Axle Violation	1	2	2	0	1	0	1	0	1	0	1	2	1	0%	2	1%
Gate Down - No Train	0	0	0	0	0	0	0	1	0	0	0	0	1	0%	0	0%
Train Activation	0	0	1	0	0	0	0	0	0	0	0	0	1	0%	0	0%
Emergency Vehicle	4	5	7	5	1	6	11	8	7	9	14	3	7	2%	4	1%
Right Turn	0	0	0	0	0	0	0	0	0	0	0	0	0	0%	0	0%
No Violation Occurred	308	310	361	337	299	325	299	332	310	360	324	378	329	97%	255	98%
<b>Total:</b>	<b>313</b>	<b>317</b>	<b>371</b>	<b>342</b>	<b>301</b>	<b>331</b>	<b>311</b>	<b>341</b>	<b>318</b>	<b>369</b>	<b>339</b>	<b>383</b>	<b>339</b>	<b>100%</b>	<b>262</b>	<b>100%</b>
<b>Uncontrollable Non-Issued Violations</b>																
No Plate	19	14	23	12	22	18	18	13	25	15	22	19	18	9%	12	12%
Out of State Plate	2	2	3	1	2	1	1	2	1	1	2	2	2	1%	2	2%
Glare on Plate	0	0	0	0	0	0	0	0	0	0	0	1	1	0%	0	0%
Illegible Plate	3	0	1	3	0	1	1	0	3	1	2	5	2	1%	0	0%
Plate Obstructed	1	1	1	1	0	2	0	2	2	5	1	1	2	1%	1	1%
Windshield Glare	62	63	128	77	63	64	64	89	104	71	86	63	78	39%	23	25%
Driver Obstructed	5	9	12	16	8	7	13	6	8	10	9	2	9	4%	7	7%
Car Obstructed	19	14	32	10	11	11	10	5	12	15	10	9	13	7%	14	15%
No DMV Match Found	26	15	26	37	23	15	30	21	17	23	18	41	24	12%	14	15%
LASD Expired	1	0	0	0	0	0	0	0	0	0	1	2	1	1%	0	0%
LASD Return	25	46	69	58	59	48	72	43	45	50	48	35	50	25%	19	20%
Other	0	0	0	0	0	0	0	0	0	0	0	0	0	0%	2	2%
<b>Total:</b>	<b>163</b>	<b>164</b>	<b>295</b>	<b>215</b>	<b>188</b>	<b>167</b>	<b>209</b>	<b>181</b>	<b>217</b>	<b>191</b>	<b>199</b>	<b>180</b>	<b>200</b>	<b>100%</b>	<b>94</b>	<b>100%</b>
<b>Controllable Non-Issued Violations</b>																
Framing of Plate	0	0	0	0	0	0	0	0	0	1	0	0	1	7%	0	3%
Focus / Clarity of Plate	0	0	0	0	0	0	0	0	0	0	0	0	0	0%	0	1%
Dark Interior	0	1	0	1	3	0	1	2	3	3	5	9	3	23%	2	27%
Framing of Driver	0	2	1	0	0	0	0	1	1	5	3	2	2	16%	3	49%
Focus / Clarity of Driver	0	0	0	0	0	0	0	0	0	0	0	0	0	0%	0	3%
Framing of Car	0	0	0	0	0	0	0	0	0	0	0	0	0	0%	1	13%
Operator/Data Error	0	0	0	0	2	0	4	0	0	0	9	0	5	36%	0	0%
Exposure	0	1	0	0	0	0	0	0	1	0	0	0	1	7%	0	4%
Equipment Malfunction	0	1	0	0	0	0	0	0	0	0	2	0	2	11%	0	1%
ACS Expired	0	0	0	0	0	0	0	0	0	0	0	0	0	0%	0	0%
<b>Total:</b>	<b>0</b>	<b>5</b>	<b>1</b>	<b>1</b>	<b>5</b>	<b>0</b>	<b>5</b>	<b>3</b>	<b>5</b>	<b>9</b>	<b>19</b>	<b>11</b>	<b>14</b>	<b>100%</b>	<b>7</b>	<b>100%</b>
<b>Summary Metrics</b>																
Daily Average Vehicle Passes	2,050	2,172	1,997	2,196	2,254	2,384	2,404	2,586	2,338	2,245	2,197	2,763	Year to Date Average		2012 Average	
Average Issued Speed	0	0	0	0	0	0	0	0	0	0	0	0	2,299		1,890	
Average Issued Red Seconds	0.0	0.0	0.0	0.0	0.0	0.0	0.0	0.0	0.0	0.0	0.0	0.0	0.0		2.4	
Citation / Violation Issuance Rate	19%	14%	7%	15%	15%	10%	9%	9%	6%	16%	14%	15%	13%		32%	
Controllable Issuance Rate	100%	85%	95%	98%	87%	100%	81%	86%	75%	81%	65%	75%	86%		87%	



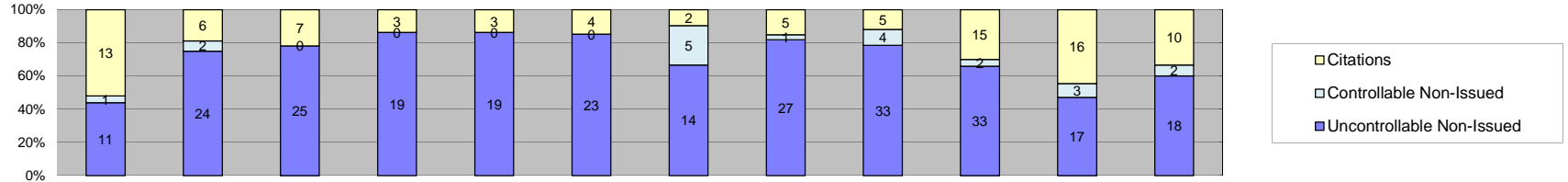
**Los Angeles County MTA Blue Line  
Approach Summary Report  
Location 2018: WB to SB Washington @ San Pedro**



Events	Jan-13	Feb-13	Mar-13	Apr-13	May-13	Jun-13	Jul-13	Aug-13	Sep-13	Oct-13	Nov-13	Dec-13	Year to Date Average		2012 Average	
													Quantity	%	Quantity	%
Non-Violations	618	536	956	964	1,179	977	949	933	860	1,206	1,201	733	926	95%	499	91%
Violations	57	79	45	42	53	34	40	101	37	37	56	27	51	5%	47	9%
<b>Total:</b>	<b>675</b>	<b>615</b>	<b>1,001</b>	<b>1,006</b>	<b>1,232</b>	<b>1,011</b>	<b>989</b>	<b>1,034</b>	<b>897</b>	<b>1,243</b>	<b>1,257</b>	<b>760</b>	<b>977</b>	<b>100%</b>	<b>546</b>	<b>100%</b>
<b>Violations</b>																
Uncontrollable Non-Issued	30	29	32	19	42	30	35	24	26	27	42	22	30	53%	30	64%
Controllable Non-Issued	12	35	1	14	1	0	0	63	3	2	0	0	16	29%	2	5%
Citations	15	15	12	9	10	4	5	14	8	8	14	5	10	18%	15	31%
<b>Total:</b>	<b>57</b>	<b>79</b>	<b>45</b>	<b>42</b>	<b>53</b>	<b>34</b>	<b>40</b>	<b>101</b>	<b>37</b>	<b>37</b>	<b>56</b>	<b>27</b>	<b>56</b>	<b>100%</b>	<b>47</b>	<b>100%</b>
<b>Non-Violations</b>																
Rear Axle Violation	0	0	0	0	0	0	0	0	0	0	0	0	0	0%	0	0%
Gate Down - No Train	0	0	0	0	0	0	0	0	0	0	0	0	0	0%	0	0%
Train Activation	0	0	2	0	0	0	0	0	0	0	0	0	2	0%	0	0%
Emergency Vehicle	9	4	3	1	3	5	5	2	4	3	4	7	4	0%	4	1%
Right Turn	0	0	0	0	0	0	0	0	0	0	0	0	0	0%	0	0%
No Violation Occurred	609	532	951	963	1,176	972	944	931	856	1,203	1,197	726	922	99%	495	99%
<b>Total:</b>	<b>618</b>	<b>536</b>	<b>956</b>	<b>964</b>	<b>1,179</b>	<b>977</b>	<b>949</b>	<b>933</b>	<b>860</b>	<b>1,206</b>	<b>1,201</b>	<b>733</b>	<b>928</b>	<b>100%</b>	<b>499</b>	<b>100%</b>
<b>Uncontrollable Non-Issued Violations</b>																
No Plate	5	3	2	1	3	4	5	5	3	2	3	2	3	9%	2	6%
Out of State Plate	1	0	1	0	0	1	1	1	0	1	0	0	1	3%	1	2%
Glare on Plate	0	0	0	0	0	0	0	0	1	0	0	0	1	3%	0	0%
Illegible Plate	0	0	1	0	1	0	1	3	0	1	0	1	1	4%	0	1%
Plate Obstructed	0	1	0	0	0	0	0	0	0	1	0	0	1	3%	0	0%
Windshield Glare	8	3	3	2	8	3	4	0	2	2	7	2	4	12%	3	9%
Driver Obstructed	1	3	3	1	4	3	5	3	4	5	8	3	4	10%	2	7%
Car Obstructed	1	4	1	1	1	2	4	0	0	3	2	2	2	6%	13	42%
No DMV Match Found	8	9	9	6	13	10	6	4	10	8	14	7	9	25%	6	19%
LASD Expired	1	0	0	0	0	0	0	0	0	0	0	2	2	4%	0	0%
LASD Return	5	6	12	8	12	7	9	8	6	4	8	3	7	21%	4	12%
Other	0	0	0	0	0	0	0	0	0	0	0	0	0	0%	1	3%
<b>Total:</b>	<b>30</b>	<b>29</b>	<b>32</b>	<b>19</b>	<b>42</b>	<b>30</b>	<b>35</b>	<b>24</b>	<b>26</b>	<b>27</b>	<b>42</b>	<b>22</b>	<b>35</b>	<b>100%</b>	<b>30</b>	<b>100%</b>
<b>Controllable Non-Issued Violations</b>																
Framing of Plate	0	0	0	0	0	0	0	0	0	0	0	0	0	0%	0	4%
Focus / Clarity of Plate	0	0	0	0	0	0	0	0	0	0	0	0	0	0%	0	0%
Dark Interior	7	4	0	0	1	0	0	0	2	0	0	0	4	12%	1	22%
Framing of Driver	0	0	0	0	0	0	0	0	0	0	0	0	0	0%	1	22%
Focus / Clarity of Driver	0	0	0	0	0	0	0	0	0	0	0	0	0	0%	0	4%
Framing of Car	0	0	0	0	0	0	0	0	0	0	0	0	0	0%	0	4%
Operator/Data Error	0	1	0	0	0	0	0	0	0	1	0	0	1	4%	0	0%
Exposure	0	6	0	0	0	0	0	0	1	1	0	0	3	9%	0	7%
Equipment Malfunction	5	24	1	14	0	0	0	63	0	0	0	0	21	75%	1	37%
ACS Expired	0	0	0	0	0	0	0	0	0	0	0	0	0	0%	0	0%
<b>Total:</b>	<b>12</b>	<b>35</b>	<b>1</b>	<b>14</b>	<b>1</b>	<b>0</b>	<b>0</b>	<b>63</b>	<b>3</b>	<b>2</b>	<b>0</b>	<b>0</b>	<b>29</b>	<b>100%</b>	<b>2</b>	<b>100%</b>
<b>Summary Metrics</b>																
Daily Average Vehicle Passes	1,318	1,560	1,161	1,040	1,050	1,218	1,276	963	856	1,298	1,292	934	Year to Date Average		2012 Average	
Average Issued Speed	18	18	20	18	18	20	18	19	19	22	18	21	1,164		1,320	
Average Issued Red Seconds	6.9	0.5	2.0	0.4	0.6	14.3	0.6	0.5	0.6	0.3	0.5	0.5	2.3		4.2	
Citation / Violation Issuance Rate	26%	19%	27%	21%	19%	12%	13%	14%	22%	22%	25%	19%	20%		30%	
Controllable Issuance Rate	56%	30%	92%	39%	91%	100%	100%	18%	73%	80%	100%	100%	73%		86%	



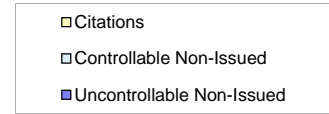
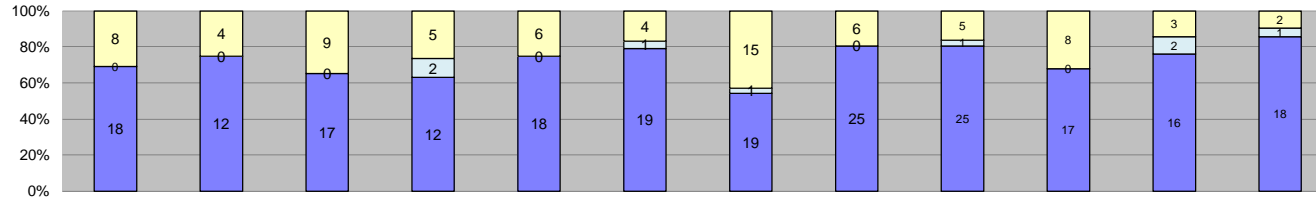
Los Angeles County MTA Blue Line  
 Approach Summary Report  
 Location 2027: EB to NB Washington @ Broadway



Events	Jan-13	Feb-13	Mar-13	Apr-13	May-13	Jun-13	Jul-13	Aug-13	Sep-13	Oct-13	Nov-13	Dec-13	Year to Date Average		2012 Average	
													Quantity	%	Quantity	%
Non-Violations	333	325	340	250	233	282	217	292	354	378	384	349	311	91%	331	92%
Violations	25	32	32	22	22	27	21	33	42	50	36	30	31	9%	29	8%
<b>Total:</b>	<b>358</b>	<b>357</b>	<b>372</b>	<b>272</b>	<b>255</b>	<b>309</b>	<b>238</b>	<b>325</b>	<b>396</b>	<b>428</b>	<b>420</b>	<b>379</b>	<b>342</b>	<b>100%</b>	<b>360</b>	<b>100%</b>
<b>Violations</b>																
Uncontrollable Non-Issued	11	24	25	19	19	23	14	27	33	33	17	18	22	69%	20	70%
Controllable Non-Issued	1	2	0	0	0	0	5	1	4	2	3	2	3	8%	1	3%
Citations	13	6	7	3	3	4	2	5	5	15	16	10	7	23%	8	27%
<b>Total:</b>	<b>25</b>	<b>32</b>	<b>32</b>	<b>22</b>	<b>22</b>	<b>27</b>	<b>21</b>	<b>33</b>	<b>42</b>	<b>50</b>	<b>36</b>	<b>30</b>	<b>32</b>	<b>100%</b>	<b>29</b>	<b>100%</b>
<b>Non-Violations</b>																
Rear Axle Violation	2	0	1	0	0	0	0	0	0	0	0	0	2	0%	1	0%
Gate Down - No Train	0	0	0	0	0	0	0	0	0	0	0	0	0	0%	0	0%
Train Activation	0	0	0	0	0	0	0	0	0	0	0	0	0	0%	0	0%
Emergency Vehicle	1	4	1	1	0	0	0	2	3	5	8	2	3	1%	1	0%
Right Turn	0	0	0	0	0	0	0	0	0	0	0	0	0	0%	0	0%
No Violation Occurred	330	321	338	249	233	282	217	290	351	373	376	347	309	99%	329	99%
<b>Total:</b>	<b>333</b>	<b>325</b>	<b>340</b>	<b>250</b>	<b>233</b>	<b>282</b>	<b>217</b>	<b>292</b>	<b>354</b>	<b>378</b>	<b>384</b>	<b>349</b>	<b>313</b>	<b>100%</b>	<b>331</b>	<b>100%</b>
<b>Uncontrollable Non-Issued Violations</b>																
No Plate	2	6	0	1	0	3	3	3	3	3	3	3	3	12%	2	10%
Out of State Plate	0	0	0	0	0	0	0	1	0	0	0	0	1	4%	1	3%
Glare on Plate	0	0	0	0	0	0	0	0	0	0	0	0	0	0%	0	0%
Illegible Plate	0	1	1	1	3	2	1	5	1	1	3	2	2	7%	0	0%
Plate Obstructed	0	0	0	0	0	1	1	0	0	0	0	0	1	4%	1	2%
Windshield Glare	1	6	6	3	3	5	3	4	4	8	0	3	4	16%	3	14%
Driver Obstructed	1	1	2	3	1	1	0	1	2	5	2	1	2	7%	1	5%
Car Obstructed	2	4	8	0	4	0	2	2	3	3	0	3	3	13%	9	39%
No DMV Match Found	2	1	2	6	4	4	1	4	4	5	1	4	3	12%	3	13%
LASD Expired	0	0	0	0	0	0	0	0	0	0	0	0	0	0%	0	1%
LASD Return	3	5	6	5	4	7	3	7	16	8	8	2	6	24%	3	11%
Other	0	0	0	0	0	0	0	0	0	0	0	0	0	0%	0	1%
<b>Total:</b>	<b>11</b>	<b>24</b>	<b>25</b>	<b>19</b>	<b>19</b>	<b>23</b>	<b>14</b>	<b>27</b>	<b>33</b>	<b>33</b>	<b>17</b>	<b>18</b>	<b>26</b>	<b>100%</b>	<b>23</b>	<b>100%</b>
<b>Controllable Non-Issued Violations</b>																
Framing of Plate	0	0	0	0	0	0	0	0	0	0	0	0	0	0%	0	8%
Focus / Clarity of Plate	0	0	0	0	0	0	0	0	0	0	0	0	0	0%	0	17%
Dark Interior	0	0	0	0	0	0	5	0	2	2	2	2	3	37%	0	25%
Framing of Driver	0	0	0	0	0	0	0	0	2	0	1	0	2	21%	0	8%
Focus / Clarity of Driver	0	0	0	0	0	0	0	0	0	0	0	0	0	0%	0	8%
Framing of Car	0	0	0	0	0	0	0	0	0	0	0	0	0	0%	0	8%
Operator/Data Error	0	0	0	0	0	0	0	1	0	0	0	0	1	14%	0	8%
Exposure	1	1	0	0	0	0	0	0	0	0	0	0	1	14%	0	17%
Equipment Malfunction	0	1	0	0	0	0	0	0	0	0	0	0	1	14%	0	0%
ACS Expired	0	0	0	0	0	0	0	0	0	0	0	0	0	0%	0	0%
<b>Total:</b>	<b>1</b>	<b>2</b>	<b>0</b>	<b>0</b>	<b>0</b>	<b>0</b>	<b>5</b>	<b>1</b>	<b>4</b>	<b>2</b>	<b>3</b>	<b>2</b>	<b>7</b>	<b>100%</b>	<b>1</b>	<b>100%</b>
<b>Summary Metrics</b>																
Daily Average Vehicle Passes	481	513	422	452	473	585	617	650	619	566	526	459	Year to Date Average		2012 Average	
Average Issued Speed	18	20	16	20	20	20	12	20	18	19	17	18	530		487	
Average Issued Red Seconds	10.2	0.8	15.8	0.5	0.3	25.4	0.2	32.0	20.2	18.4	6.9	10.3	11.8		13.6	
Citation / Violation Issuance Rate	52%	19%	22%	14%	14%	15%	10%	15%	12%	30%	44%	33%	23%		30%	
Controllable Issuance Rate	93%	75%	100%	100%	100%	100%	29%	83%	56%	88%	84%	83%	83%		88%	



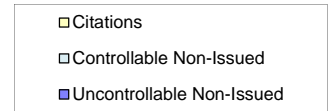
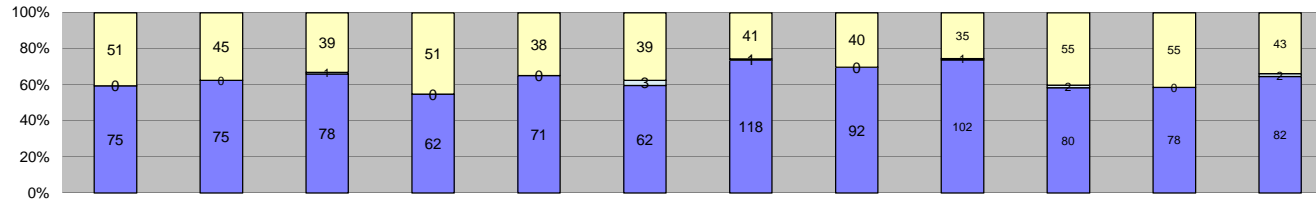
# Los Angeles County MTA Blue Line Approach Summary Report Location 2036: SB to EB Flower @ 18th St



Events	Jan-13	Feb-13	Mar-13	Apr-13	May-13	Jun-13	Jul-13	Aug-13	Sep-13	Oct-13	Nov-13	Dec-13	Year to Date Average		2012 Average	
													Quantity	%	Quantity	%
Non-Violations	318	118	94	95	110	65	97	93	75	112	96	88	113	82%	114	56%
Violations	26	16	26	19	24	24	35	31	31	25	21	21	25	18%	89	44%
<b>Total:</b>	<b>344</b>	<b>134</b>	<b>120</b>	<b>114</b>	<b>134</b>	<b>89</b>	<b>132</b>	<b>124</b>	<b>106</b>	<b>137</b>	<b>117</b>	<b>109</b>	<b>138</b>	<b>100%</b>	<b>203</b>	<b>100%</b>
<b>Violations</b>																
Uncontrollable Non-Issued	18	12	17	12	18	19	19	25	25	17	16	18	18	70%	52	58%
Controllable Non-Issued	0	0	0	2	0	1	1	0	1	0	2	1	1	5%	1	1%
Citations	8	4	9	5	6	4	15	6	5	8	3	2	6	24%	36	41%
<b>Total:</b>	<b>26</b>	<b>16</b>	<b>26</b>	<b>19</b>	<b>24</b>	<b>24</b>	<b>35</b>	<b>31</b>	<b>31</b>	<b>25</b>	<b>21</b>	<b>21</b>	<b>26</b>	<b>100%</b>	<b>89</b>	<b>100%</b>
<b>Non-Violations</b>																
Rear Axle Violation	0	0	0	0	0	0	0	0	0	0	0	0	0	0%	0	0%
Gate Down - No Train	0	0	0	0	0	0	0	0	0	0	0	0	0	0%	0	0%
Train Activation	0	0	0	0	0	0	0	0	0	0	0	0	0	0%	0	0%
Emergency Vehicle	0	1	2	0	0	1	0	0	1	1	0	1	1	1%	2	2%
Right Turn	0	0	0	0	0	0	0	0	0	0	0	0	0	0%	0	0%
No Violation Occurred	318	117	92	95	110	64	97	93	74	111	96	87	113	99%	113	98%
<b>Total:</b>	<b>318</b>	<b>118</b>	<b>94</b>	<b>95</b>	<b>110</b>	<b>65</b>	<b>97</b>	<b>93</b>	<b>75</b>	<b>112</b>	<b>96</b>	<b>88</b>	<b>114</b>	<b>100%</b>	<b>114</b>	<b>100%</b>
<b>Uncontrollable Non-Issued Violations</b>																
No Plate	7	4	5	3	2	5	6	6	6	3	2	4	4	18%	9	17%
Out of State Plate	0	0	0	1	0	0	2	2	1	0	0	0	2	6%	2	3%
Glare on Plate	0	0	0	0	0	0	0	0	0	0	0	0	0	0%	0	0%
Illegible Plate	0	0	0	1	0	0	0	0	0	4	0	0	3	10%	1	1%
Plate Obstructed	0	0	0	0	0	0	0	0	0	0	0	0	0	0%	0	1%
Windshield Glare	2	0	0	0	2	3	0	0	0	0	0	0	2	9%	2	3%
Driver Obstructed	2	0	1	2	2	2	2	4	1	0	0	4	2	9%	5	10%
Car Obstructed	0	0	1	0	0	0	0	0	0	0	0	0	1	4%	2	3%
No DMV Match Found	2	0	2	1	4	0	2	3	6	3	1	0	3	11%	8	16%
LASD Expired	0	0	0	0	0	0	0	0	0	0	0	0	0	0%	0	0%
LASD Return	5	8	8	4	8	9	7	10	11	7	13	10	8	33%	18	35%
Other	0	0	0	0	0	0	0	0	0	0	0	0	0	0%	6	11%
<b>Total:</b>	<b>18</b>	<b>12</b>	<b>17</b>	<b>12</b>	<b>18</b>	<b>19</b>	<b>19</b>	<b>25</b>	<b>25</b>	<b>17</b>	<b>16</b>	<b>18</b>	<b>25</b>	<b>100%</b>	<b>52</b>	<b>100%</b>
<b>Controllable Non-Issued Violations</b>																
Framing of Plate	0	0	0	0	0	1	0	0	0	0	0	0	1	19%	0	14%
Focus / Clarity of Plate	0	0	0	0	0	0	0	0	0	0	0	0	0	0%	0	29%
Dark Interior	0	0	0	0	0	0	1	0	0	0	2	1	1	25%	0	14%
Framing of Driver	0	0	0	0	0	0	0	0	0	0	0	0	0	0%	0	0%
Focus / Clarity of Driver	0	0	0	0	0	0	0	0	0	0	0	0	0	0%	0	0%
Framing of Car	0	0	0	0	0	0	0	0	0	0	0	0	0	0%	0	14%
Operator/Data Error	0	0	0	0	0	0	0	0	0	0	0	0	0	0%	0	0%
Exposure	0	0	0	0	0	0	0	0	1	0	0	0	1	19%	0	0%
Equipment Malfunction	0	0	0	2	0	0	0	0	0	0	0	0	2	38%	0	29%
ACS Expired	0	0	0	0	0	0	0	0	0	0	0	0	0	0%	0	0%
<b>Total:</b>	<b>0</b>	<b>0</b>	<b>0</b>	<b>2</b>	<b>0</b>	<b>1</b>	<b>1</b>	<b>0</b>	<b>1</b>	<b>0</b>	<b>2</b>	<b>1</b>	<b>5</b>	<b>100%</b>	<b>1</b>	<b>100%</b>
<b>Summary Metrics</b>																
Daily Average Vehicle Passes	502	523	488	493	511	563	553	512	566	577	525	485	Year to Date Average		2012 Average	
Average Issued Speed	19	16	17	16	18	18	18	15	17	19	16	16	525		497	
Average Issued Red Seconds	19.1	14.8	18.7	12.1	7.2	26.0	11.3	26.1	15.7	13.6	1.6	26.0	17		16	
Citation / Violation Issuance Rate	31%	25%	35%	26%	25%	17%	43%	19%	16%	32%	14%	10%	16.0		16.8	
Controllable Issuance Rate	100%	100%	100%	71%	100%	80%	94%	100%	83%	100%	60%	67%	24%		39%	
													88%		97%	



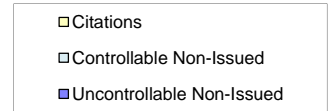
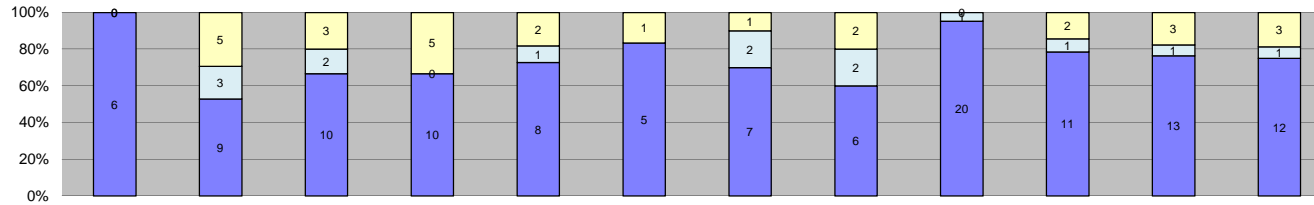
Los Angeles County MTA Blue Line  
 Approach Summary Report  
 Location 2046: SB to EB Flower @ 10 Fwy Onramp



Events	Jan-13	Feb-13	Mar-13	Apr-13	May-13	Jun-13	Jul-13	Aug-13	Sep-13	Oct-13	Nov-13	Dec-13	Year to Date Average		2012 Average	
													Quantity	%	Quantity	%
Non-Violations	1,534	1,554	1,616	1,681	1,687	1,491	1,852	1,802	1,488	1,681	1,253	1,385	1,585	93%	1,016	90%
Violations	126	120	118	113	109	104	160	132	138	137	133	127	126	7%	107	10%
<b>Total:</b>	<b>1,660</b>	<b>1,674</b>	<b>1,734</b>	<b>1,794</b>	<b>1,796</b>	<b>1,595</b>	<b>2,012</b>	<b>1,934</b>	<b>1,626</b>	<b>1,818</b>	<b>1,386</b>	<b>1,512</b>	<b>1,712</b>	<b>100%</b>	<b>1,123</b>	<b>100%</b>
<b>Violations</b>																
Uncontrollable Non-Issued	75	75	78	62	71	62	118	92	102	80	78	82	81	64%	63	59%
Controllable Non-Issued	0	0	1	0	0	3	1	0	1	2	0	2	2	1%	12	11%
Citations	51	45	39	51	38	39	41	40	35	55	55	43	44	35%	32	30%
<b>Total:</b>	<b>126</b>	<b>120</b>	<b>118</b>	<b>113</b>	<b>109</b>	<b>104</b>	<b>160</b>	<b>132</b>	<b>138</b>	<b>137</b>	<b>133</b>	<b>127</b>	<b>127</b>	<b>100%</b>	<b>107</b>	<b>100%</b>
<b>Non-Violations</b>																
Rear Axle Violation	0	0	0	0	0	0	1	0	0	0	0	0	1	0%	0	0%
Gate Down - No Train	0	0	0	0	0	0	0	0	0	0	0	0	0	0%	0	0%
Train Activation	4	0	2	0	1	0	0	0	0	0	0	0	2	0%	0	0%
Emergency Vehicle	3	2	2	1	1	1	3	1	0	3	2	3	2	0%	1	0%
Right Turn	0	0	0	0	0	0	0	0	0	0	0	0	0	0%	0	0%
No Violation Occurred	1,527	1,552	1,612	1,680	1,685	1,490	1,848	1,801	1,488	1,678	1,251	1,382	1,583	100%	1,014	100%
<b>Total:</b>	<b>1,534</b>	<b>1,554</b>	<b>1,616</b>	<b>1,681</b>	<b>1,687</b>	<b>1,491</b>	<b>1,852</b>	<b>1,802</b>	<b>1,488</b>	<b>1,681</b>	<b>1,253</b>	<b>1,385</b>	<b>1,588</b>	<b>100%</b>	<b>1,016</b>	<b>100%</b>
<b>Uncontrollable Non-Issued Violations</b>																
No Plate	20	23	20	11	15	21	28	28	22	23	21	22	21	24%	13	20%
Out of State Plate	1	3	4	3	0	1	7	2	3	2	0	2	3	3%	2	2%
Glare on Plate	1	2	0	1	0	2	2	0	5	1	0	0	2	2%	0	0%
Illegible Plate	5	2	1	7	5	0	7	8	5	3	8	2	5	5%	0	0%
Plate Obstructed	2	0	1	0	0	0	0	1	1	0	0	1	1	1%	0	0%
Windshield Glare	1	3	6	8	6	8	10	5	2	5	4	3	5	6%	4	7%
Driver Obstructed	7	7	7	4	6	4	12	8	8	4	2	6	6	7%	4	6%
Car Obstructed	0	3	1	0	1	0	2	1	0	0	0	0	2	2%	20	32%
No DMV Match Found	10	11	18	11	13	6	11	17	13	15	15	13	13	14%	7	10%
LASD Expired	3	0	0	0	0	0	0	0	0	0	0	7	5	6%	0	0%
LASD Return	25	21	20	17	25	20	39	22	43	27	28	26	26	29%	13	21%
Other	0	0	0	0	0	0	0	0	0	0	0	0	0	0%	1	1%
<b>Total:</b>	<b>75</b>	<b>75</b>	<b>78</b>	<b>62</b>	<b>71</b>	<b>62</b>	<b>118</b>	<b>92</b>	<b>102</b>	<b>80</b>	<b>78</b>	<b>82</b>	<b>89</b>	<b>100%</b>	<b>63</b>	<b>100%</b>
<b>Controllable Non-Issued Violations</b>																
Framing of Plate	0	0	0	0	0	0	0	0	0	0	0	0	0	0%	0	0%
Focus / Clarity of Plate	0	0	0	0	0	0	0	0	0	1	0	0	1	19%	0	0%
Dark Interior	0	0	0	0	0	1	0	0	1	0	0	0	1	19%	0	0%
Framing of Driver	0	0	0	0	0	0	0	0	0	0	0	0	0	0%	0	0%
Focus / Clarity of Driver	0	0	0	0	0	0	0	0	0	0	0	0	0	0%	0	1%
Framing of Car	0	0	0	0	0	0	0	0	0	0	0	0	0	0%	0	0%
Operator/Data Error	0	0	0	0	0	0	1	0	0	0	0	1	1	19%	5	46%
Exposure	0	0	0	0	0	2	0	0	0	1	0	1	1	25%	0	1%
Equipment Malfunction	0	0	0	0	0	0	0	0	0	0	0	0	0	0%	6	51%
ACS Expired	0	0	1	0	0	0	0	0	0	0	0	0	1	19%	0	0%
<b>Total:</b>	<b>0</b>	<b>0</b>	<b>1</b>	<b>0</b>	<b>0</b>	<b>3</b>	<b>1</b>	<b>0</b>	<b>1</b>	<b>2</b>	<b>0</b>	<b>2</b>	<b>5</b>	<b>100%</b>	<b>12</b>	<b>100%</b>
<b>Summary Metrics</b>																
Daily Average Vehicle Passes	2,782	2,838	2,913	2,446	2,621	2,851	2,888	2,589	2,885	2,911	2,808	2,797	Year to Date Average		2012 Average	
Average Issued Speed	17	18	18	17	19	17	18	18	18	18	18	18	2,777		3,367	
Average Issued Red Seconds	3.3	4.8	2.5	4.7	6.3	4.6	3.2	4.4	3.9	6.6	3.7	5.0	4.4		6.4	
Citation / Violation Issuance Rate	40%	38%	33%	45%	35%	38%	26%	30%	25%	40%	41%	34%	35%		34%	
Controllable Issuance Rate	100%	100%	98%	100%	100%	93%	98%	100%	97%	96%	100%	96%	98%		81%	



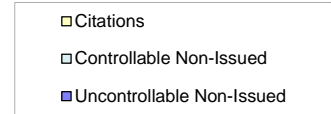
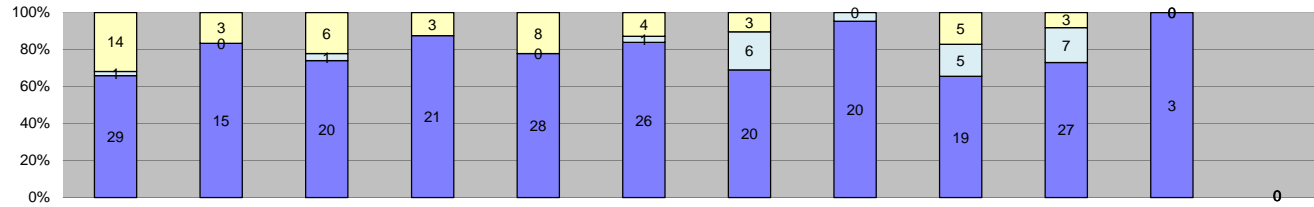
Los Angeles County MTA Blue Line  
 Approach Summary Report  
 Location 2054: WB Venice @ Flower



Events	Jan-13	Feb-13	Mar-13	Apr-13	May-13	Jun-13	Jul-13	Aug-13	Sep-13	Oct-13	Nov-13	Dec-13	Year to Date Average		2012 Average	
													Quantity	%	Quantity	%
Non-Violations	98	74	97	98	88	82	68	93	86	75	71	75	84	86%	16	80%
Violations	6	17	15	15	11	6	10	10	21	14	17	16	13	14%	4	20%
<b>Total:</b>	<b>104</b>	<b>91</b>	<b>112</b>	<b>113</b>	<b>99</b>	<b>88</b>	<b>78</b>	<b>103</b>	<b>107</b>	<b>89</b>	<b>88</b>	<b>91</b>	<b>97</b>	<b>100%</b>	<b>20</b>	<b>100%</b>
<b>Violations</b>																
Uncontrollable Non-Issued	6	9	10	10	8	5	7	6	20	11	13	12	10	70%	2	56%
Controllable Non-Issued	0	3	2	0	1	0	2	2	1	1	1	1	2	11%	1	17%
Citations	0	5	3	5	2	1	1	2	0	2	3	3	3	19%	1	27%
<b>Total:</b>	<b>6</b>	<b>17</b>	<b>15</b>	<b>15</b>	<b>11</b>	<b>6</b>	<b>10</b>	<b>10</b>	<b>21</b>	<b>14</b>	<b>17</b>	<b>16</b>	<b>14</b>	<b>100%</b>	<b>4</b>	<b>100%</b>
<b>Non-Violations</b>																
Rear Axle Violation	0	0	0	0	0	1	1	0	0	0	0	0	1	1%	0	2%
Gate Down - No Train	0	0	0	0	0	0	0	0	0	0	0	0	0	0%	0	0%
Train Activation	0	0	0	0	0	0	0	0	0	0	0	0	0	0%	0	1%
Emergency Vehicle	2	1	2	0	1	2	1	0	1	0	1	3	2	2%	0	3%
Right Turn	0	0	0	0	0	0	0	0	0	0	0	0	0	0%	0	1%
No Violation Occurred	96	73	95	98	87	79	66	93	85	75	70	72	82	97%	15	95%
<b>Total:</b>	<b>98</b>	<b>74</b>	<b>97</b>	<b>98</b>	<b>88</b>	<b>82</b>	<b>68</b>	<b>93</b>	<b>86</b>	<b>75</b>	<b>71</b>	<b>75</b>	<b>85</b>	<b>100%</b>	<b>16</b>	<b>100%</b>
<b>Uncontrollable Non-Issued Violations</b>																
No Plate	3	1	0	3	0	2	1	1	2	4	2	1	2	14%	1	33%
Out of State Plate	0	0	0	0	0	0	1	0	1	0	1	0	1	7%	0	4%
Glare on Plate	0	0	0	0	0	0	0	0	0	0	0	0	0	0%	0	0%
Illegible Plate	0	0	0	0	1	0	1	0	1	0	0	0	1	7%	0	0%
Plate Obstructed	0	0	0	0	0	1	0	0	1	1	1	0	1	7%	0	0%
Windshield Glare	0	1	5	2	3	0	3	2	8	5	5	6	4	27%	0	19%
Driver Obstructed	0	0	0	0	0	0	0	0	0	0	0	0	0	0%	0	4%
Car Obstructed	0	2	1	1	1	0	0	0	0	1	1	1	1	8%	0	15%
No DMV Match Found	1	3	1	0	1	0	0	0	0	0	2	0	2	11%	0	7%
LASD Expired	0	0	0	0	0	0	0	0	0	0	0	0	0	0%	0	0%
LASD Return	2	2	3	4	2	2	1	3	7	0	1	4	3	19%	0	19%
Other	0	0	0	0	0	0	0	0	0	0	0	0	0	0%	0	0%
<b>Total:</b>	<b>6</b>	<b>9</b>	<b>10</b>	<b>10</b>	<b>8</b>	<b>5</b>	<b>7</b>	<b>6</b>	<b>20</b>	<b>11</b>	<b>13</b>	<b>12</b>	<b>15</b>	<b>100%</b>	<b>2</b>	<b>100%</b>
<b>Controllable Non-Issued Violations</b>																
Framing of Plate	0	0	0	0	0	0	0	0	0	0	0	0	0	0%	0	0%
Focus / Clarity of Plate	0	0	0	0	0	0	0	0	0	0	0	0	0	0%	0	0%
Dark Interior	0	0	1	0	1	0	2	1	0	1	1	1	1	31%	0	50%
Framing of Driver	0	0	0	0	0	0	0	0	0	0	0	0	0	0%	0	13%
Focus / Clarity of Driver	0	0	0	0	0	0	0	0	0	0	0	0	0	0%	0	13%
Framing of Car	0	1	1	0	0	0	0	0	1	0	0	0	1	27%	0	25%
Operator/Data Error	0	0	0	0	0	0	0	0	0	0	0	0	0	0%	0	0%
Exposure	0	2	0	0	0	0	0	1	0	0	0	0	2	41%	0	0%
Equipment Malfunction	0	0	0	0	0	0	0	0	0	0	0	0	0	0%	0	0%
ACS Expired	0	0	0	0	0	0	0	0	0	0	0	0	0	0%	0	0%
<b>Total:</b>	<b>0</b>	<b>3</b>	<b>2</b>	<b>0</b>	<b>1</b>	<b>0</b>	<b>2</b>	<b>2</b>	<b>1</b>	<b>1</b>	<b>1</b>	<b>1</b>	<b>4</b>	<b>100%</b>	<b>1</b>	<b>100%</b>
<b>Summary Metrics</b>																
Daily Average Vehicle Passes	834	769	1,115	1,007	858	700	1,000	1,180	1,333	972	1,082	890	978		996	
Average Issued Speed	0	20	24	22	30	25	27	19	0	26	29	33	25		12	
Average Issued Red Seconds	0	0.3	0.3	14.3	1.1	0.4	0.1	1.1	0	0.5	0.7	0.4	1.9		2.7	
Citation / Violation Issuance Rate	0%	29%	20%	33%	18%	17%	10%	20%	0%	14%	18%	19%	20%		27%	
Controllable Issuance Rate	0%	63%	60%	100%	67%	100%	33%	50%	0%	67%	75%	75%	69%		62%	



Los Angeles County MTA Blue Line  
 Approach Summary Report  
 Location 2056: SB to EB Flower @ Venice



Events	Jan-13	Feb-13	Mar-13	Apr-13	May-13	Jun-13	Jul-13	Aug-13	Sep-13	Oct-13	Nov-13	Dec-13	Year to Date Average		2012 Average	
													Quantity	%	Quantity	%
Non-Violations	196	179	257	263	224	230	234	214	183	210	20	0	201	88%	43	82%
Violations	44	18	27	24	36	31	29	21	29	37	3	0	27	12%	10	18%
<b>Total:</b>	<b>240</b>	<b>197</b>	<b>284</b>	<b>287</b>	<b>260</b>	<b>261</b>	<b>263</b>	<b>235</b>	<b>212</b>	<b>247</b>	<b>23</b>	<b>0</b>	<b>228</b>	<b>100%</b>	<b>52</b>	<b>100%</b>
<b>Violations</b>																
Uncontrollable Non-Issued	29	15	20	21	28	26	20	20	19	27	3	0	21	71%	3	26%
Controllable Non-Issued	1	0	1	0	0	1	6	1	5	7	0	0	3	11%	5	51%
Citations	14	3	6	3	8	4	3	0	5	3	0	0	5	19%	2	23%
<b>Total:</b>	<b>44</b>	<b>18</b>	<b>27</b>	<b>24</b>	<b>36</b>	<b>31</b>	<b>29</b>	<b>21</b>	<b>29</b>	<b>37</b>	<b>3</b>	<b>0</b>	<b>29</b>	<b>100%</b>	<b>10</b>	<b>100%</b>
<b>Non-Violations</b>																
Rear Axle Violation	0	0	0	0	0	0	0	0	0	0	0	0	0	0%	0	0%
Gate Down - No Train	0	0	0	0	0	0	0	0	0	0	0	0	0	0%	0	0%
Train Activation	0	0	1	0	0	0	0	0	0	0	0	0	1	0%	0	0%
Emergency Vehicle	1	1	2	1	0	2	3	0	1	3	1	0	2	1%	0	0%
Right Turn	0	0	0	0	0	0	0	0	0	0	0	0	0	0%	0	0%
No Violation Occurred	195	178	254	262	224	228	231	214	182	207	19	0	199	99%	43	100%
<b>Total:</b>	<b>196</b>	<b>179</b>	<b>257</b>	<b>263</b>	<b>224</b>	<b>230</b>	<b>234</b>	<b>214</b>	<b>183</b>	<b>210</b>	<b>20</b>	<b>0</b>	<b>202</b>	<b>100%</b>	<b>43</b>	<b>100%</b>
<b>Uncontrollable Non-Issued Violations</b>																
No Plate	10	3	3	4	5	5	5	2	3	3	0	0	4	16%	1	33%
Out of State Plate	0	0	0	1	2	1	1	1	1	2	0	0	1	5%	0	7%
Glare on Plate	0	0	0	0	0	1	0	0	0	0	0	0	1	4%	0	0%
Illegible Plate	0	1	0	0	2	0	0	0	0	1	0	0	1	5%	0	0%
Plate Obstructed	0	1	0	1	0	0	1	0	0	0	0	0	1	4%	0	0%
Windshield Glare	0	0	1	4	6	5	2	5	2	3	0	0	4	13%	0	0%
Driver Obstructed	2	2	6	4	7	2	4	3	2	4	0	0	4	13%	0	3%
Car Obstructed	1	0	0	0	1	0	0	0	0	0	0	0	1	4%	1	23%
No DMV Match Found	3	0	1	2	3	2	1	1	4	3	0	0	2	8%	0	13%
LASD Expired	0	0	0	0	0	0	0	0	0	0	0	0	0	0%	0	0%
LASD Return	13	8	9	5	2	10	6	8	7	11	3	0	7	28%	1	20%
Other	0	0	0	0	0	0	0	0	0	0	0	0	0	0%	0	0%
<b>Total:</b>	<b>29</b>	<b>15</b>	<b>20</b>	<b>21</b>	<b>28</b>	<b>26</b>	<b>20</b>	<b>20</b>	<b>19</b>	<b>27</b>	<b>3</b>	<b>0</b>	<b>27</b>	<b>100%</b>	<b>3</b>	<b>100%</b>
<b>Controllable Non-Issued Violations</b>																
Framing of Plate	0	0	0	0	0	0	0	0	0	0	0	0	0	0%	0	7%
Focus / Clarity of Plate	0	0	0	0	0	0	0	0	0	0	0	0	0	0%	0	0%
Dark Interior	1	0	0	0	0	1	2	0	3	5	0	0	2	42%	0	2%
Framing of Driver	0	0	0	0	0	0	0	0	0	0	0	0	0	0%	0	3%
Focus / Clarity of Driver	0	0	0	0	0	0	0	0	0	0	0	0	0	0%	0	0%
Framing of Car	0	0	0	0	0	0	0	0	0	0	0	0	0	0%	0	7%
Operator/Data Error	0	0	0	0	0	0	0	0	0	0	0	0	0	0%	0	0%
Exposure	0	0	1	0	0	0	0	1	1	0	0	0	1	17%	0	5%
Equipment Malfunction	0	0	0	0	0	0	4	0	1	2	0	0	2	41%	4	76%
ACS Expired	0	0	0	0	0	0	0	0	0	0	0	0	0	0%	0	0%
<b>Total:</b>	<b>1</b>	<b>0</b>	<b>1</b>	<b>0</b>	<b>0</b>	<b>1</b>	<b>6</b>	<b>1</b>	<b>5</b>	<b>7</b>	<b>0</b>	<b>0</b>	<b>6</b>	<b>100%</b>	<b>5</b>	<b>100%</b>
<b>Summary Metrics</b>																
Daily Average Vehicle Passes	147	203	194	263	266	188	288	249	188	288	166	0	Year to Date Average		2012 Average	
Average Issued Speed	15	16	14	17	15	14	14	0	14	18	0	0	222		206	
Average Issued Red Seconds	37.6	37.6	41.2	19.7	36.6	25.2	15.7	0	40.3	0.3	0	0	28.2		24.6	
Citation / Violation Issuance Rate	32%	17%	22%	13%	22%	13%	10%	0%	17%	8%	0%	0%	17%		29%	
Controllable Issuance Rate	93%	100%	86%	100%	100%	80%	33%	0%	50%	30%	0%	0%	75%		64%	



**Calls For Information**

Reason for Call	Dec-13	3 Month Average	Year to Date Average	Year to Date Total	2012 Average
<i>Appointment</i>	2	1	3	24	4
<i>Bail</i>	5	2	4	40	4
<i>Complaint</i>	0	0	0	0	1
<i>Contest Violation</i>	7	7	7	89	11
<i>Courtesy Notice</i>	1	1	2	15	3
<i>Explain Citation</i>	0	2	3	23	3
<i>Explain Court</i>	0	0	0	0	0
<i>Explain the Project</i>	0	0	0	0	0
<i>Extension</i>	1	1	1	11	3
<i>Other</i>	0	0	0	0	0
<i>Affidavit of Non-Liability</i>	2	6	6	74	8
<i>Affidavit of Non-Liability Status</i>	0	0	1	3	2
<i>Traffic Shool</i>	0	1	2	5	1
<b>Total Calls</b>	18	19	29	284	40
<b>Appointments Scheduled</b>	2	1	2	21	3
<b>Affidavits of Non-Liability Processed</b>	34	24	34	402	41
<b>Court Packets Prepared</b>	30	58	39	463	27





**Los Angeles County MTA Blue Line  
Monthly Citation Yield - By Location  
December 2013**

Direction	Location	Code	Days of Enforcement	Events	Violations	Citations	Yield*
WB	20th St @ Long Beach Blvd.	322	31	0	0	0	0.00
EB	Vernon Ave @ Long Beach	421	31	4	3	1	0.03
EB	Century Blvd. @ Grandee	821	31	17	7	1	0.03
WB	Century Blvd. @ Grandee	822	31	20	18	9	0.29
EB	103rd St @ Grandee	841	31	19	15	3	0.10
EB	119th St @ Willowbrook	981	31	9	5	0	0.00
WB	119th St @ Willowbrook	982	31	42	31	5	0.16
EB	130th @ Willowbrook	1051	31	51	37	4	0.13
WB	130th @ Willowbrook	1052	31	3	2	1	0.03
EB	Stockwell @ Willowbrook	1081	31	19	17	2	0.06
WB	Stockwell @ Willowbrook	1082	31	15	11	2	0.06
EB	Washington to NB Los Angeles	2003	31	1246	180	40	1.29
WB	Washington to SB Los Angeles	2008	31	216	7	2	0.06
EB	Washington to NB San Pedro	2017	31	607	224	33	1.06
WB	Washington to SB San Pedro	2018	31	760	27	5	0.16
EB	Washington to NB Broadway	2027	31	379	30	10	0.32
SB	Flower to EB 18th Street	2036	31	109	21	2	0.06
SB	Flower to EB 10 Fwy On Ramp	2046	31	1512	127	43	1.39
WB	Vanice @ Flower	2054	31	91	16	3	0.10
SB	Flower to EB Venice	2056	0	0	0	0	NA
<b>Totals</b>			<b>29</b>	<b>5,119</b>	<b>778</b>	<b>166</b>	<b>5.64</b>

\*Yield is the number of citations issued per day of enforcement.



Los Angeles County MTA Blue Line  
Disposition Summary Report  
December 2013

	Dec-13		3 Month Average		YTD Total		YTD Average		2012 Average	
Disposition Type	Count /Amount Paid		Count /Amount Paid		Count /Amount Paid		Count /Amount Paid		Count /Amount Paid	
<i>Bail Forfeiture</i>	24	\$12,306.00	39	\$19,623	513	\$261,166	43	\$21,764	44	\$22,049
<i>Fine Paid</i>	18	\$950.00	11	\$5,793	170	\$83,189	14	\$6,932	18	\$9,210
<i>Department Void</i>	0	\$0.00	0	\$0	0	\$0	0	\$0	0	\$0
<i>Not Guilty</i>	60	\$0.00	67	\$0	819	\$0	68	\$0	37	\$0
<i>Section D Void</i>	34	\$0.00	24	\$0	402	\$0	34	\$0	30	\$0
<i>Traffic School</i>	26	\$14,404.00	26	\$14,008	391	\$215,385	33	\$17,949	27	\$12,277
<b>Court Gross Total</b>	<b>162</b>	<b>\$27,660.00</b>	<b>166</b>	<b>\$39,424</b>	<b>2,295</b>	<b>\$559,740</b>	<b>191</b>	<b>\$46,645</b>	<b>157</b>	<b>\$43,536</b>
<b>MTA Gross Total*</b>	<b>68</b>	<b>\$9,868.32</b>	<b>286</b>	<b>\$10,938</b>	<b>1074</b>	<b>\$155,768</b>	<b>90</b>	<b>\$12,981</b>	<b>89</b>	<b>\$12,860</b>

\*Logic built on following model (assuming the new 2009 fine and fee structure):

MTA receives \$146.31 of \$446.00 citation where bail forfeiture and fine paid occurs

MTA receives \$148.05 of \$509.00 citation when traffic school option is paid for



**Los Angeles County MTA Blue Line  
Performance Report  
December 2013**

	<u>Total Events</u>	<u>Non Violations</u>	<u>Potential Violations</u>	<u>Percent Citable</u>	<u>Non Issued Violations</u>	<u>No DMV Match</u>	<u>Police/ Client Rejected</u>	<u>Citations Issued</u>	<u>DMV Match Rate</u>	<u>Issuance Rate</u>	<u>Dispo Paid</u>	<u>Pay Rate</u>	<u>Closed No Pay</u>	<u>Pending Open</u>	<u>Closure Rate</u>	<u>Court Packs</u>	<u>Contest Rate</u>
Jan-04	5,235	4,080	1155	22.1%	420	11	1	735	98.5%	63.6%	541	74%	43	151	79%	-	-
Feb-04	4,775	3,564	1211	25.4%	450	13	6	761	98.3%	62.8%	562	74%	53	146	81%	-	-
Mar-04	5,478	4,052	1426	26.0%	637	20	3	789	97.5%	55.3%	569	72%	47	173	78%	-	-
Apr-04	4,159	2,638	1521	36.6%	788	20	6	733	97.4%	48.2%	551	75%	50	132	82%	-	-
May-04	4,008	2,442	1566	39.1%	595	24	4	971	97.6%	62.0%	684	70%	66	221	77%	-	-
Jun-04	3,563	2,232	1331	37.4%	729	22	2	602	96.5%	45.2%	421	70%	45	136	77%	-	-
Jul-04	3,772	2,425	1347	35.7%	532	19	4	815	97.7%	60.5%	582	71%	64	169	79%	-	-
Aug-04	3,476	2,270	1206	34.7%	696	28	12	510	94.9%	42.3%	366	72%	39	105	79%	-	-
Sep-04	3,701	2,417	1284	34.7%	823	22	6	461	95.5%	35.9%	340	74%	33	88	81%	-	-
Oct-04	3,497	2,260	1237	35.4%	549	15	3	688	97.9%	55.6%	487	71%	66	135	80%	-	-
Nov-04	3,218	2,056	1162	36.1%	467	20	15	695	97.3%	59.8%	500	72%	46	149	79%	-	-
Dec-04	3,843	2,736	1107	28.8%	590	15	14	517	97.3%	46.7%	375	73%	49	93	82%	-	-
Jan-05	3,656	2,621	1035	28.3%	456	15	41	579	97.6%	55.9%	421	73%	39	119	79%	-	-
Feb-05	3,200	2,207	993	31.0%	440	9	27	553	98.5%	55.7%	404	73%	43	106	81%	-	-
Mar-05	3,156	2,116	1040	33.0%	454	26	29	586	95.9%	56.3%	435	74%	49	102	83%	-	-
Apr-05	3,688	2,383	1305	35.4%	755	126	32	550	82.2%	42.1%	404	73%	49	97	82%	-	-
May-05	3,617	2,390	1227	33.9%	618	117	24	609	84.4%	49.6%	442	73%	52	115	81%	-	-
Jun-05	3,871	2,719	1152	29.8%	650	114	41	502	82.6%	43.6%	351	70%	39	112	78%	-	-
Jul-05	3,507	2,277	1230	35.1%	538	111	0	692	86.2%	56.3%	457	66%	105	130	81%	-	-
Aug-05	3,711	2,481	1230	33.1%	675	142	19	555	80.2%	45.1%	396	71%	47	112	80%	-	-
Sep-05	3,855	2,629	1226	31.8%	562	125	8	664	84.3%	54.2%	475	72%	50	139	79%	-	-
Oct-05	4,897	3,728	1169	23.9%	566	97	18	603	86.5%	51.6%	421	70%	61	121	80%	-	-
Nov-05	4,956	3,785	1171	23.6%	633	105	16	538	84.1%	45.9%	399	74%	36	103	81%	-	-
Dec-05	4,919	3,937	982	20.0%	529	116	26	453	80.5%	46.1%	346	76%	36	71	84%	-	-
Jan-06	4,752	3,726	1026	21.6%	558	98	30	468	83.6%	45.6%	348	74%	39	81	83%	70	10.1%
Feb-06	4,929	3,808	1121	22.7%	657	97	33	464	83.7%	41.4%	338	73%	35	91	80%	39	7.0%
Mar-06	5,620	4,412	1208	21.5%	710	110	72	498	83.8%	41.2%	347	70%	57	94	81%	45	6.8%
Apr-06	5,159	4,084	1075	20.8%	572	126	30	503	80.9%	46.8%	368	73%	53	82	84%	66	10.9%
May-06	4,914	3,801	1113	22.6%	566	124	26	547	82.2%	49.1%	397	73%	57	93	83%	68	12.6%
Jun-06	4,855	3,834	1021	21.0%	531	153	17	490	76.8%	48.0%	366	75%	39	85	83%	49	10.8%
Jul-06	4,835	3,620	1215	25.1%	647	108	40	568	84.9%	46.7%	396	70%	60	112	80%	40	8.5%
Aug-06	4,677	3,572	1105	23.6%	820	123	19	285	71.2%	25.8%	197	69%	28	60	79%	62	13.4%
Sep-06	4,487	3,396	1091	24.3%	702	115	21	389	78.1%	35.7%	265	68%	48	76	80%	53	10.6%
Oct-06	7,566	6,244	1322	17.5%	913	181	27	409	70.7%	30.9%	303	74%	23	83	80%	52	10.3%
Nov-06	5,897	4,690	1207	20.5%	706	112	52	501	83.2%	41.5%	359	72%	49	93	81%	42	7.7%
Dec-06	5,891	4,671	1220	20.7%	697	128	78	523	82.4%	42.9%	378	72%	36	109	79%	71	14.5%
Jan-07	5,244	4,035	1209	23.1%	822	129	63	387	77.7%	32.0%	277	72%	38	72	81%	40	7.0%
Feb-07	4,897	3,777	1120	22.9%	913	140	61	207	65.7%	18.5%	154	74%	17	36	83%	65	22.8%
Mar-07	5,936	4,506	1430	24.1%	967	191	90	463	74.3%	32.4%	326	70%	52	85	82%	40	10.3%
Apr-07	5,139	4,237	902	17.6%	595	111	88	307	78.1%	34.0%	202	66%	57	48	84%	91	22.2%
May-07	1,148	471	677	59.0%	270	100	76	407	82.8%	60.1%	291	71%	30	86	79%	50	10.0%
Jun-07	3,802	2,589	1213	31.9%	955	125	85	258	73.3%	21.3%	180	70%	14	64	75%	57	10.9%
Jul-07	3,417	2,250	1167	34.2%	932	116	96	235	74.0%	20.1%	148	63%	20	67	71%	40	10.3%



**Los Angeles County MTA Blue Line  
Performance Report  
December 2013**

	<u>Total Events</u>	<u>Non Violations</u>	<u>Potential Violations</u>	<u>Percent Citable</u>	<u>Non Issued Violations</u>	<u>No DMV Match</u>	<u>Police/ Client Rejected</u>	<u>Citations Issued</u>	<u>DMV Match Rate</u>	<u>Issuance Rate</u>	<u>Dispo Paid</u>	<u>Pay Rate</u>	<u>Closed No Pay</u>	<u>Pending Open</u>	<u>Closure Rate</u>	<u>Court Packs</u>	<u>Contest Rate</u>
Aug-07	4,301	3,151	1150	26.7%	861	130	66	289	73.2%	25.1%	194	67%	23	72	75%	98	47.3%
Sep-07	3,904	3,069	835	21.4%	588	104	56	247	74.4%	29.6%	145	59%	21	81	67%	40	8.6%
Oct-07	6,157	5,056	1101	17.9%	771	100	43	330	78.9%	30.0%	184	56%	41	105	68%	53	17.3%
Nov-07	7,367	6,035	1332	18.1%	913	115	2	419	78.5%	31.5%	172	41%	160	87	79%	44	10.8%
Dec-07	5,880	4,659	1221	20.8%	869	122	0	352	74.3%	28.8%	160	45%	118	74	79%	48	18.6%
Jan-08	6,059	5,047	1012	16.7%	679	112	0	333	74.8%	32.9%	208	62%	81	44	87%	41	17.4%
Feb-08	7,348	6,296	1052	14.3%	695	122	1	357	74.6%	33.9%	211	59%	87	59	83%	60	20.8%
Mar-08	6,761	5,525	1236	18.3%	890	110	2	346	76.0%	28.0%	189	55%	95	62	82%	33	13.4%
Apr-08	6,259	4,964	1295	20.7%	1025	94	0	270	74.2%	20.8%	182	67%	45	43	84%	57	17.3%
May-08	6,273	5,174	1099	17.5%	906	63	2	193	75.6%	17.6%	119	62%	42	32	83%	50	11.9%
Jun-08	5,517	4,350	1167	21.2%	957	74	0	210	73.9%	18.0%	131	62%	40	39	81%	41	11.6%
Jul-08	5,736	4,740	996	17.4%	745	74	3	251	77.4%	25.2%	171	68%	38	42	83%	41	12.3%
Aug-08	5,001	3,982	1019	20.4%	687	91	2	332	78.6%	32.6%	201	61%	76	55	83%	23	6.4%
Sep-08	5,049	4,204	845	16.7%	514	77	1	331	81.2%	39.2%	194	59%	79	58	82%	48	13.9%
Oct-08	5,045	4,313	732	14.5%	451	59	0	281	82.6%	38.4%	147	52%	53	81	71%	44	16.3%
Nov-08	4,824	4,190	634	13.1%	339	65	0	295	81.9%	46.5%	164	56%	61	70	76%	41	21.2%
Dec-08	5,295	4,552	743	14.0%	391	70	0	352	83.4%	47.4%	163	46%	144	45	87%	30	14.3%
Jan-09	4,838	4,178	660	13.6%	377	68	0	283	80.6%	42.9%	138	49%	92	53	81%	42	16.7%
Feb-09	4,965	4,299	666	13.4%	354	61	1	312	83.7%	46.8%	182	58%	69	61	80%	31	9.3%
Mar-09	5,197	4,390	807	15.5%	525	70	2	282	80.2%	34.9%	174	62%	50	58	79%	43	13.0%
Apr-09	5,448	4,301	1147	21.1%	782	23	2	365	94.1%	31.8%	169	46%	135	61	83%	52	18.5%
May-09	4,847	4,078	769	15.9%	445	92	0	324	77.9%	42.1%	172	53%	95	57	82%	43	14.6%
Jun-09	4,247	3,588	659	15.5%	394	54	2	265	83.2%	40.2%	134	51%	83	48	82%	73	20.7%
Jul-09	4,226	3,533	693	16.4%	432	64	1	261	80.4%	37.7%	144	55%	62	55	79%	35	12.4%
Aug-09	4,471	3,814	657	14.7%	387	60	1	270	81.9%	41.1%	130	48%	84	56	79%	32	10.3%
Sep-09	3,864	3,282	582	15.1%	345	53	18	237	82.8%	40.7%	113	48%	84	40	83%	9	3.2%
Oct-09	4,644	4,002	642	13.8%	388	75	2	254	77.3%	39.6%	120	47%	89	45	82%	36	9.9%
Nov-09	3,626	3,082	544	15.0%	359	53	12	185	78.8%	34.0%	97	52%	51	37	80%	41	12.7%
Dec-09	4,139	3,511	628	15.2%	361	49	8	267	84.9%	42.5%	157	59%	55	55	79%	33	12.5%
Jan-10	3,822	3,255	567	14.8%	346	38	33	221	87.0%	39.0%	135	61%	35	51	77%	25	9.6%
Feb-10	3,063	2,321	742	24.2%	444	80	22	298	80.0%	40.2%	191	64%	39	68	77%	19	7.0%
Mar-10	3,392	2,601	791	23.3%	474	91	27	317	79.1%	40.1%	190	60%	43	84	74%	9	3.8%
Apr-10	3,685	2,935	750	20.4%	493	55	67	257	85.5%	34.3%	143	56%	62	52	80%	12	4.7%
May-10	3,465	2,732	733	21.2%	507	66	59	226	81.2%	30.8%	125	55%	50	51	77%	35	18.9%
Jun-10	3,312	2,531	781	23.6%	472	46	45	309	88.5%	39.6%	174	56%	77	58	81%	28	10.5%
Jul-10	2,783	2,107	676	24.3%	432	57	34	244	83.0%	36.1%	154	63%	46	44	82%	18	8.1%
Aug-10	3,492	2,687	805	23.1%	510	65	62	295	84.6%	36.6%	152	52%	72	71	76%	34	11.4%
Sep-10	2,612	1,985	627	24.0%	382	50	22	245	84.2%	39.1%	125	51%	48	72	71%	39	12.3%
Oct-10	2,746	2,105	641	23.3%	365	56	12	276	83.7%	43.1%	169	61%	45	62	78%	33	12.8%
Nov-10	2,802	2,146	656	23.4%	419	51	51	237	85.0%	36.1%	114	48%	58	65	73%	14	6.2%
Dec-10	2,787	2,130	657	23.6%	411	68	25	246	79.9%	37.4%	120	49%	57	69	72%	45	14.6%



**Los Angeles County MTA Blue Line  
Performance Report  
December 2013**

	<u>Total Events</u>	<u>Non Violations</u>	<u>Potential Violations</u>	<u>Percent Citable</u>	<u>Non Issued Violations</u>	<u>No DMV Match</u>	<u>Police/ Client Rejected</u>	<u>Citations Issued</u>	<u>DMV Match Rate</u>	<u>Issuance Rate</u>	<u>Dispo Paid</u>	<u>Pay Rate</u>	<u>Closed No Pay</u>	<u>Pending Open</u>	<u>Closure Rate</u>	<u>Court Packs</u>	<u>Contest Rate</u>
Jan-11	2,780	2,163	617	22.2%	364	73	20	253	78.9%	41.0%	106	42%	93	54	79%	35	14.3%
Feb-11	2,705	2,157	548	20.3%	310	74	20	238	77.7%	43.4%	112	47%	63	63	74%	32	10.8%
Mar-11	2,710	2,008	702	25.9%	440	62	13	262	81.6%	37.3%	96	37%	88	78	70%	23	9.4%
Apr-11	2,937	2,223	714	24.3%	457	74	88	257	82.3%	36.0%	95	37%	95	67	74%	36	13.0%
May-11	3,285	2,527	758	23.1%	529	56	105	229	85.6%	30.2%	89	39%	70	70	69%	29	12.2%
Jun-11	3,064	2,366	698	22.8%	522	60	70	176	80.4%	25.2%	49	28%	61	66	63%	34	13.8%
Jul-11	3,619	2,989	630	17.4%	479	50	101	151	83.4%	24.0%	41	27%	37	73	52%	36	14.2%
Aug-11	5,913	5,027	886	15.0%	678	71	147	208	83.3%	23.5%	56	27%	54	98	53%	29	12.2%
Sep-11	4,528	3,781	747	16.5%	549	58	110	198	84.2%	26.5%	56	28%	49	93	53%	25	9.5%
Oct-11	4,646	3,843	803	17.3%	572	65	115	231	84.2%	28.8%	44	19%	67	120	48%	25	9.7%
Nov-11	4,075	3,384	691	17.0%	501	52	66	190	83.1%	27.5%	25	13%	53	112	41%	13	5.7%
Dec-11	5,073	4,281	792	15.6%	570	57	118	222	85.6%	28.0%	19	9%	109	94	58%	33	18.8%
Jan-12	4,336	3,602	734	16.9%	563	76	116	171	79.1%	23.3%	13	8%	86	72	58%	30	19.9%
Feb-12	5,520	4,191	1329	24.1%	1118	77	119	211	81.1%	15.9%	4	2%	109	98	54%	32	15.4%
Mar-12	4,908	3,721	1187	24.2%	1006	91	158	181	78.8%	15.2%	7	4%	98	76	58%	22	11.1%
Apr-12	5,137	3,831	1306	25.4%	1087	91	164	219	80.8%	16.8%	4	2%	128	87	60%	27	11.7%
May-12	5,018	3,703	1315	26.2%	1194	68	121	121	78.1%	9.2%	2	2%	69	50	59%	38	20.0%
Jun-12	4,419	3,417	1002	22.7%	830	76	116	172	79.1%	17.2%	1	1%	90	81	53%	32	14.4%
Jul-12	5,102	4,210	892	17.5%	730	73	102	162	78.3%	18.2%	3	2%	81	78	52%	18	10.5%
Aug-12	4,922	3,990	932	18.9%	679	75	107	253	82.8%	27.1%	6	2%	129	118	53%	24	11.4%
Sep-12	4,648	3,764	884	19.0%	673	99	128	211	77.4%	23.9%	2	1%	111	98	54%	30	16.6%
Oct-12	4,914	4,046	868	17.7%	647	93	165	221	80.6%	25.5%	8	4%	99	114	48%	29	13.2%
Nov-12	5,347	4,539	808	15.1%	629	80	131	179	79.5%	22.2%	3	2%	74	102	43%	18	14.9%
Dec-12	4,761	4,192	569	12.0%	420	63	74	149	78.0%	26.2%	4	3%	65	80	46%	22	12.8%
Jan-13	5,007	4,289	718	14.3%	511	77	106	207	80.3%	28.8%	2	1%	80	125	40%	30	18.5%
Feb-13	4,694	3,950	744	15.9%	579	61	137	165	83.2%	22.2%	10	6%	72	83	50%	23	9.1%
Mar-13	5,883	4,993	890	15.1%	730	78	167	160	80.7%	18.0%	9	6%	67	84	48%	37	17.5%
Apr-13	5,733	4,969	764	13.3%	598	88	160	166	78.7%	21.7%	6	4%	70	90	46%	24	10.9%
May-13	5,883	5,101	782	13.3%	635	83	170	147	79.3%	18.8%	5	3%	59	83	44%	40	22.3%
Jun-13	5,378	4,699	679	12.6%	568	58	146	111	81.6%	16.3%	15	14%	39	57	49%	29	19.5%
Jul-13	6,022	5,156	866	14.4%	731	81	205	135	80.8%	15.6%	18	13%	26	91	33%	32	15.5%
Aug-13	5,845	5,056	789	13.5%	662	74	158	127	79.4%	16.1%	19	15%	13	95	25%	33	20.0%
Sep-13	5,387	4,546	841	15.6%	732	71	201	109	81.4%	13.0%	8	7%	21	80	27%	74	46.3%
Oct-13	6,346	5,424	922	14.5%	727	84	179	195	81.7%	21.1%	11	6%	15	169	13%	55	33.1%
Nov-13	5,369	4,558	811	15.1%	621	75	148	190	81.8%	23.4%	0	0%	0	190	0%	46	31.3%
Dec-13	5,119	4,341	778	15.2%	612	105	122	166	73.3%	21.3%	0	0%	0	166	0%	30	27.0%
<b>Total</b>	<b>549,205</b>	<b>434,105</b>	<b>115,100</b>	<b>21.0%</b>	<b>73,623</b>	<b>9,395</b>	<b>6,420</b>	<b>41,477</b>	<b>83.6%</b>	<b>36.0%</b>	<b>23,974</b>	<b>58.8%</b>	<b>7,184</b>	<b>10,319</b>	<b>76.4%</b>	<b>3,738</b>	<b>14.1%</b>

\* Pay Rate and Closure Rate percentages are based on a 4 month lag

\*\* Contested Citations Data Available from January 2006 to present

\*\*\* Contested Citations take into account a 6 month lag from the violation date to the trail date.