



# Expo Line Monthly Report



Metro

Los Angeles County  
Metropolitan Transportation Authority

December 2014



Prepared by: Xerox State and Local Solutions  
Confidential

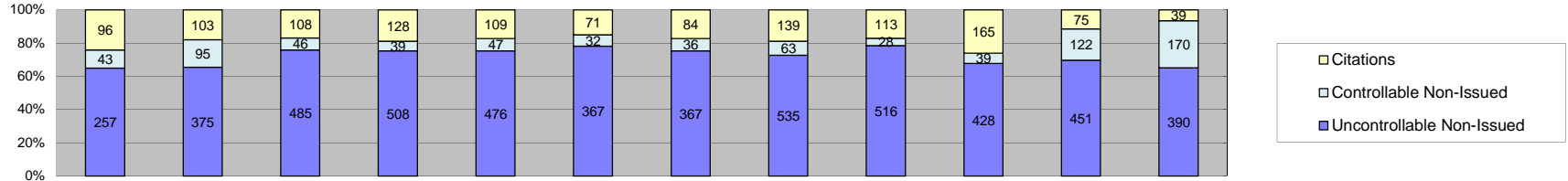


## Table of Contents

Report Title	Page
<i>Approach Summary Report, All Locations.....</i>	3
<i>Approach Summary Report, Location 5008: SB to EB Flower @ Washington.....</i>	4
<i>Approach Summary Report, Location 5018: SB to WB Flower @ USC Trade Tech.....</i>	5
<i>Approach Summary Report, Location 5028: SB to EB Flower @ 23rd.....</i>	6
<i>Approach Summary Report, Location 5038: SB to EB Flower @ Adams.....</i>	7
<i>Approach Summary Report, Location 5048: SB to EB Flower @ 28th St.....</i>	8
<i>Approach Summary Report, Location 5058: Sb to EB Flower @ 30th St.....</i>	9
<i>Approach Summary Report, Location 5068: SB to EB Flower @ Jefferson.....</i>	10
<i>Approach Summary Report, Location 5077: EB to NB Exposition @ Watt.....</i>	11
<i>Approach Summary Report, Location 5079: WB to SB Exposition @ Bill Robertson.....</i>	12
<i>Approach Summary Report, Location 5087: EB to NB Exposition @ Vermont.....</i>	13
<i>Approach Summary Report, Location 5089: WB to SB Exposition @ Vermont.....</i>	14
<i>Approach Summary Report, Location 5097: EB to NB Exposition @ Raymond.....</i>	15
<i>Approach Summary Report, Location 5107: EB to NB Exposition @ Normandie.....</i>	16
<i>Approach Summary Report, Location 5109: WB to SB Exposition @ Normandie.....</i>	17
<i>Approach Summary Report, Location 5117: EB to NB Exposition @ Halldale.....</i>	18
<i>Approach Summary Report, Location 5119 WB to SB Exposition @ Denker.....</i>	19
<i>Approach Summary Report, Location 5127: EB to NB Exposition @ Western.....</i>	20
<i>Approach Summary Report, Location 5129: WB to SB Exposition @ Western.....</i>	21
<i>Approach Summary Report, Location 5137: EB to SB Exposition @ Crenshaw.....</i>	22
<i>Customer Service Report.....</i>	23
<i>Monthly Citation Yield Report.....</i>	24
<i>Disposition Summary Report.....</i>	25
<i>Performance Report.....</i>	26



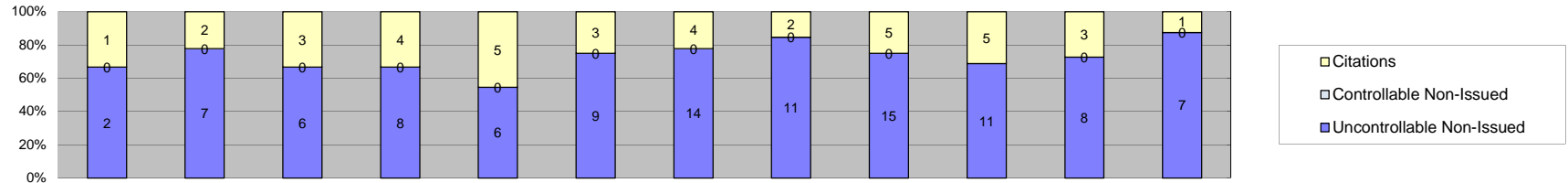
# Los Angeles County MTA Expo Line Approach Summary Report All Locations



Events	2014												Year to Date Monthly Average		2013 Monthly Average	
	Jan-14	Feb-14	Mar-14	Apr-14	May-14	Jun-14	Jul-14	Aug-14	Sep-14	Oct-14	Nov-14	Dec-14	Quantity	%	Quantity	%
<b>Non-Violations</b>	3,911	3,641	4,147	3,163	3,117	2,656	3,016	3,335	3,286	3,454	2,949	2,926	3,300	85%	4,327	89%
Violations	396	573	639	675	632	470	487	737	657	632	648	599	595	15%	557	11%
<b>Total:</b>	<b>4,307</b>	<b>4,214</b>	<b>4,786</b>	<b>3,838</b>	<b>3,749</b>	<b>3,126</b>	<b>3,503</b>	<b>4,072</b>	<b>3,943</b>	<b>4,086</b>	<b>3,597</b>	<b>3,525</b>	<b>3,896</b>	<b>100%</b>	<b>4,884</b>	<b>100%</b>
<b>Violations</b>																
Uncontrollable Non-Issued	257	375	485	508	476	367	367	535	516	428	451	390	430	72%	371	67%
Controllable Non-Issued	43	95	46	39	47	32	36	63	28	39	122	170	63	11%	33	6%
Citations	96	103	108	128	109	71	84	139	113	165	75	39	103	17%	153	27%
<b>Total:</b>	<b>396</b>	<b>573</b>	<b>639</b>	<b>675</b>	<b>632</b>	<b>470</b>	<b>487</b>	<b>737</b>	<b>657</b>	<b>632</b>	<b>648</b>	<b>599</b>	<b>595</b>	<b>83%</b>	<b>557</b>	<b>73%</b>
<b>Non-Violations</b>																
Rear Axle Violation	9	3	11	4	1	3	2	20	8	2	1	0	6	0%	14	0%
Emergency Vehicle	30	20	14	19	11	14	29	27	38	10	18	22	21	1%	50	1%
Right Turn	0	0	0	0	0	0	0	0	0	0	0	0	0	0%	0	0%
No Violation Occurred	3,872	3,618	4,122	3,140	3,105	2,639	2,985	3,288	3,240	3,442	2,930	2,904	3,274	99%	4,263	99%
<b>Total:</b>	<b>3,911</b>	<b>3,641</b>	<b>4,147</b>	<b>3,163</b>	<b>3,117</b>	<b>2,656</b>	<b>3,016</b>	<b>3,335</b>	<b>3,286</b>	<b>3,454</b>	<b>2,949</b>	<b>2,926</b>	<b>3,301</b>	<b>100%</b>	<b>4,327</b>	<b>100%</b>
<b>Uncontrollable Non-Issued Violations</b>																
No Plate	31	51	73	64	50	54	46	73	69	75	56	58	58	13%	51	13%
Out of State Plate	5	5	6	4	10	6	5	6	9	4	7	11	7	1%	6	2%
Glare on Plate	0	7	6	11	35	17	5	0	14	7	7	0	12	3%	12	4%
Illegible Plate	34	28	38	46	8	8	28	46	23	24	31	39	29	7%	44	13%
Plate Obstructed	6	11	6	3	23	16	8	5	10	9	11	10	10	2%	8	2%
Windshield Glare	23	24	57	19	41	45	45	75	52	27	81	67	46	11%	40	12%
Driver Obstructed	26	14	19	20	33	29	35	27	31	39	44	47	30	7%	24	7%
Car Obstructed	0	1	2	3	2	0	0	6	3	2	4	2	3	1%	29	9%
No DMV Match Found	43	59	64	78	68	54	58	79	94	79	66	43	65	15%	42	12%
LASD Expired	1	0	0	0	0	0	0	0	0	0	14	1	5	1%	12	4%
LASD Return	87	175	210	228	203	136	136	208	211	162	130	112	167	38%	118	35%
Other	1	0	4	32	3	2	1	10	0	0	0	0	8	2%	3	1%
<b>Total:</b>	<b>257</b>	<b>375</b>	<b>485</b>	<b>508</b>	<b>476</b>	<b>367</b>	<b>367</b>	<b>535</b>	<b>516</b>	<b>428</b>	<b>451</b>	<b>390</b>	<b>440</b>	<b>100%</b>	<b>336</b>	<b>100%</b>
<b>Controllable Non-Issued Violations</b>																
Framing of Plate	2	1	1	0	0	0	0	2	1	0	0	0	1	1%	2	4%
Focus / Clarity of Plate	0	31	11	7	2	1	0	0	0	0	0	0	10	8%	3	5%
Dark Interior	19	24	20	22	28	11	4	7	14	29	77	71	27	22%	12	26%
Framing of Driver	0	0	0	0	0	0	0	0	6	0	0	0	6	5%	2	3%
Focus / Clarity of Driver	0	0	1	0	6	3	0	0	0	0	0	40	13	10%	3	6%
Framing of Car	0	0	0	0	0	1	1	0	0	0	0	0	1	1%	2	4%
Data/Operator Error	0	0	0	0	0	0	0	17	0	0	2	0	10	8%	5	11%
Exposure	16	26	3	0	3	3	2	22	5	6	2	0	9	7%	10	20%
Equipment Malfunction	6	13	10	10	8	13	29	15	2	4	15	8	11	9%	7	15%
ACS Expired	0	0	0	0	0	0	0	0	0	0	26	51	39	30%	2	4%
<b>Total:</b>	<b>43</b>	<b>95</b>	<b>46</b>	<b>39</b>	<b>47</b>	<b>32</b>	<b>36</b>	<b>63</b>	<b>28</b>	<b>39</b>	<b>122</b>	<b>170</b>	<b>126</b>	<b>100%</b>	<b>48</b>	<b>100%</b>
<b>Summary Metrics</b>																
Daily Average Vehicle Passes	2014												Year to Date Monthly Average		2013 Monthly Average	
Average Issued Speed	22,282	16,921	20,735	18,568	22,100	19,393	20,223	19,428	20,231	19,564	19,437	16,202	19,590		15,365	
Average Issued Red Seconds	22	21	20	21	21	22	21	21	22	21	20	19	21		21	
Average Issued Red Seconds	40.4	16.0	18.3	86.8	16.2	11.2	17.7	12.5	13.6	21.5	6.5	8.6	22.4		57.3	
Citation / Violation Issuance Rate	24%	18%	17%	19%	17%	15%	17%	19%	17%	26%	12%	7%	17%		27%	
Controllable Issuance Rate	69%	52%	70%	77%	70%	69%	70%	69%	80%	81%	38%	19%	64%		83%	



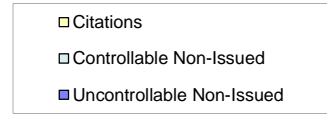
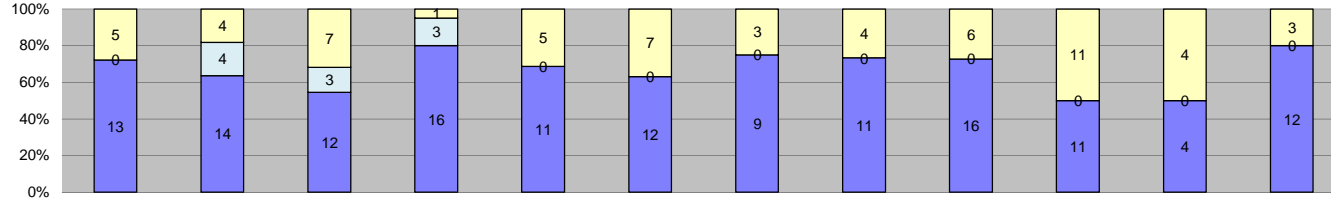
Los Angeles County MTA Expo Line  
 Approach Summary Report  
 Location 5008: SB to EB Flower @ Washington



Events	2014												Year to Date Monthly Average		2013 Monthly Average	
	Jan-14	Feb-14	Mar-14	Apr-14	May-14	Jun-14	Jul-14	Aug-14	Sep-14	Oct-14	Nov-14	Dec-14	Quantity	%	Quantity	%
Non-Violations	89	72	76	87	70	94	91	75	74	88	93	102	84	88%	73	87%
Violations	3	9	9	12	11	12	18	13	20	16	11	8	12	12%	11	13%
<b>Total:</b>	<b>92</b>	<b>81</b>	<b>85</b>	<b>99</b>	<b>81</b>	<b>106</b>	<b>109</b>	<b>88</b>	<b>94</b>	<b>104</b>	<b>104</b>	<b>110</b>	<b>96</b>	<b>100%</b>	<b>84</b>	<b>100%</b>
<b>Violations</b>																
Uncontrollable Non-Issued	2	7	6	8	6	9	14	11	15	11	8	7	9	73%	7	56%
Controllable Non-Issued	0	0	0	0	0	0	0	0	0	0	0	0	0	0%	2	13%
Citations	1	2	3	4	5	3	4	2	5	5	3	1	3	27%	4	31%
<b>Total:</b>	<b>3</b>	<b>9</b>	<b>9</b>	<b>12</b>	<b>11</b>	<b>12</b>	<b>18</b>	<b>13</b>	<b>20</b>	<b>16</b>	<b>11</b>	<b>8</b>	<b>12</b>	<b>73%</b>	<b>13</b>	<b>69%</b>
<b>Non-Violations</b>																
Rear Axle Violation	0	0	0	0	0	0	0	0	0	0	0	0	0	0%	0	0%
Emergency Vehicle	3	4	2	5	3	2	4	1	3	2	0	1	3	3%	3	4%
Right Turn	0	0	0	0	0	0	0	0	0	0	0	0	0	0%	0	0%
No Violation Occurred	86	68	74	82	67	92	87	74	71	86	93	101	82	97%	70	96%
<b>Total:</b>	<b>89</b>	<b>72</b>	<b>76</b>	<b>87</b>	<b>70</b>	<b>94</b>	<b>91</b>	<b>75</b>	<b>74</b>	<b>88</b>	<b>93</b>	<b>102</b>	<b>84</b>	<b>100%</b>	<b>73</b>	<b>100%</b>
<b>Uncontrollable Non-Issued Violations</b>																
No Plate	1	2	1	0	0	1	2	1	1	1	1	1	1	8%	2	14%
Out of State Plate	1	0	0	0	0	0	0	0	0	0	0	0	1	7%	1	7%
Glare on Plate	0	0	0	0	0	1	0	0	0	0	0	0	1	7%	1	7%
Illegible Plate	0	1	0	0	0	0	1	2	1	0	0	1	1	8%	2	12%
Plate Obstructed	0	0	0	0	0	0	0	0	0	0	0	0	0	0%	0	0%
Windshield Glare	0	0	0	0	0	1	0	1	0	0	0	0	1	7%	1	7%
Driver Obstructed	0	0	1	0	1	1	3	0	1	1	0	0	1	9%	1	7%
Car Obstructed	0	0	0	0	0	0	0	0	0	0	0	0	0	0%	1	7%
No DMV Match Found	0	4	3	7	5	4	5	7	11	9	5	4	6	39%	5	32%
LASD Expired	0	0	0	0	0	0	0	0	0	0	1	0	1	7%	0	0%
LASD Return	0	0	1	1	0	1	3	0	1	0	1	1	1	9%	1	10%
Other	0	0	0	0	0	0	0	0	0	0	0	0	0	0%	0	0%
<b>Total:</b>	<b>2</b>	<b>7</b>	<b>6</b>	<b>8</b>	<b>6</b>	<b>9</b>	<b>14</b>	<b>11</b>	<b>15</b>	<b>11</b>	<b>8</b>	<b>7</b>	<b>15</b>	<b>100%</b>	<b>15</b>	<b>100%</b>
<b>Controllable Non-Issued Violations</b>																
Framing of Plate	0	0	0	0	0	0	0	0	0	0	0	0	0	0%	0	0%
Focus / Clarity of Plate	0	0	0	0	0	0	0	0	0	0	0	0	0	0%	0	0%
Dark Interior	0	0	0	0	0	0	0	0	0	0	0	0	0	0%	1	22%
Framing of Driver	0	0	0	0	0	0	0	0	0	0	0	0	0	0%	0	0%
Focus / Clarity of Driver	0	0	0	0	0	0	0	0	0	0	0	0	0	0%	0	0%
Framing of Car	0	0	0	0	0	0	0	0	0	0	0	0	0	0%	0	0%
Data/Operator Error	0	0	0	0	0	0	0	0	0	0	0	0	0	0%	0	0%
Exposure	0	0	0	0	0	0	0	0	0	0	0	0	0	0%	2	33%
Equipment Malfunction	0	0	0	0	0	0	0	0	0	0	0	0	0	0%	2	44%
ACS Expired	0	0	0	0	0	0	0	0	0	0	0	0	0	0%	0	0%
<b>Total:</b>	<b>0</b>	<b>0</b>	<b>0</b>	<b>0</b>	<b>0</b>	<b>0</b>	<b>0</b>	<b>0</b>	<b>0</b>	<b>0</b>	<b>0</b>	<b>0</b>	<b>0</b>	<b>0%</b>	<b>5</b>	<b>100%</b>
<b>Summary Metrics</b>																
Daily Average Vehicle Passes	744	625	703	666	811	670	705	699	735	658	802	722	Year to Date Monthly Average		2013 Monthly Average	
Average Issued Speed	26	25	22	18	26	20	18	21	20	21	19	18	712		663	
Average Issued Red Seconds	88.6	0.5	0.4	25.7	19.9	33.4	0.6	0.5	4.5	0.7	2.1	3.0	15.0		20.3	
Citation / Violation Issuance Rate	33%	22%	33%	33%	45%	25%	22%	15%	25%	31%	27%	13%	27%		36%	
Controllable Issuance Rate	100%	100%	100%	100%	100%	100%	100%	100%	100%	100%	100%	100%	100%		89%	



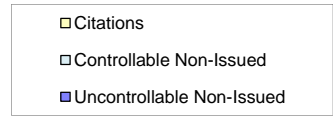
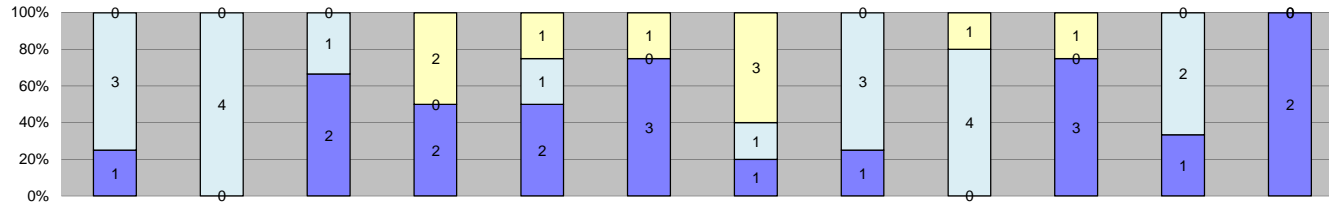
Los Angeles County MTA Expo Line  
 Approach Summary Report  
 Location 5018: SB to WB Flower @ USC Trade Tech



Events	Year to Date												Year to Date Monthly Average		2013 Monthly Average	
	Jan-14	Feb-14	Mar-14	Apr-14	May-14	Jun-14	Jul-14	Aug-14	Sep-14	Oct-14	Nov-14	Dec-14	Quantity	%	Quantity	%
Non-Violations	57	62	93	79	58	73	66	51	106	81	71	70	72	80%	55	76%
Violations	18	22	22	20	16	19	12	15	22	22	8	15	18	20%	17	24%
<b>Total:</b>	<b>75</b>	<b>84</b>	<b>115</b>	<b>99</b>	<b>74</b>	<b>92</b>	<b>78</b>	<b>66</b>	<b>128</b>	<b>103</b>	<b>79</b>	<b>85</b>	<b>90</b>	<b>100%</b>	<b>73</b>	<b>100%</b>
<b>Violations</b>																
Uncontrollable Non-Issued	13	14	12	16	11	12	9	11	16	11	4	12	12	59%	12	66%
Controllable Non-Issued	0	4	3	3	0	0	0	0	0	0	0	0	3	17%	2	11%
Citations	5	4	7	1	5	7	3	4	6	11	4	3	5	25%	4	23%
<b>Total:</b>	<b>18</b>	<b>22</b>	<b>22</b>	<b>20</b>	<b>16</b>	<b>19</b>	<b>12</b>	<b>15</b>	<b>22</b>	<b>22</b>	<b>8</b>	<b>15</b>	<b>20</b>	<b>75%</b>	<b>19</b>	<b>77%</b>
<b>Non-Violations</b>																
Rear Axle Violation	0	0	0	0	0	0	0	0	0	0	0	0	0	0%	0	0%
Emergency Vehicle	3	2	0	1	0	2	5	2	2	1	2	3	2	3%	2	3%
Right Turn	0	0	0	0	0	0	0	0	0	0	0	0	0	0%	0	0%
No Violation Occurred	54	60	93	78	58	71	61	49	104	80	69	67	70	97%	54	97%
<b>Total:</b>	<b>57</b>	<b>62</b>	<b>93</b>	<b>79</b>	<b>58</b>	<b>73</b>	<b>66</b>	<b>51</b>	<b>106</b>	<b>81</b>	<b>71</b>	<b>70</b>	<b>73</b>	<b>100%</b>	<b>55</b>	<b>100%</b>
<b>Uncontrollable Non-Issued Violations</b>																
No Plate	1	0	5	0	1	3	2	2	3	1	1	2	2	12%	2	12%
Out of State Plate	0	0	0	0	0	0	0	0	0	0	1	0	1	6%	1	5%
Glare on Plate	0	2	2	2	2	2	1	0	1	0	0	0	2	10%	2	8%
Illegible Plate	6	3	2	2	0	1	1	3	1	0	0	1	2	12%	4	20%
Plate Obstructed	0	0	0	1	1	0	0	0	1	0	1	0	1	6%	1	5%
Windshield Glare	0	0	0	0	1	2	1	0	0	0	0	2	2	8%	1	6%
Driver Obstructed	4	4	0	1	1	1	3	5	5	2	0	2	3	16%	3	14%
Car Obstructed	0	0	0	0	0	0	0	0	0	1	0	0	1	6%	1	5%
No DMV Match Found	1	0	1	2	1	2	0	0	3	2	0	2	2	10%	2	11%
LASD Expired	0	0	0	0	0	0	0	0	0	0	0	0	0	0%	0	0%
LASD Return	1	5	2	8	4	1	1	1	2	5	1	3	3	16%	3	13%
Other	0	0	0	0	0	0	0	0	0	0	0	0	0	0%	0	0%
<b>Total:</b>	<b>13</b>	<b>14</b>	<b>12</b>	<b>16</b>	<b>11</b>	<b>12</b>	<b>9</b>	<b>11</b>	<b>16</b>	<b>11</b>	<b>4</b>	<b>12</b>	<b>18</b>	<b>100%</b>	<b>19</b>	<b>100%</b>
<b>Controllable Non-Issued Violations</b>																
Framing of Plate	0	0	0	0	0	0	0	0	0	0	0	0	0	0%	0	0%
Focus / Clarity of Plate	0	4	3	1	0	0	0	0	0	0	0	0	3	57%	3	50%
Dark Interior	0	0	0	2	0	0	0	0	0	0	0	0	2	43%	1	17%
Framing of Driver	0	0	0	0	0	0	0	0	0	0	0	0	0	0%	0	0%
Focus / Clarity of Driver	0	0	0	0	0	0	0	0	0	0	0	0	0	0%	0	0%
Framing of Car	0	0	0	0	0	0	0	0	0	0	0	0	0	0%	0	0%
Data/Operator Error	0	0	0	0	0	0	0	0	0	0	0	0	0	0%	1	17%
Exposure	0	0	0	0	0	0	0	0	0	0	0	0	0	0%	1	17%
Equipment Malfunction	0	0	0	0	0	0	0	0	0	0	0	0	0	0%	0	0%
ACS Expired	0	0	0	0	0	0	0	0	0	0	0	0	0	0%	0	0%
<b>Total:</b>	<b>0</b>	<b>4</b>	<b>3</b>	<b>3</b>	<b>0</b>	<b>0</b>	<b>0</b>	<b>0</b>	<b>0</b>	<b>0</b>	<b>0</b>	<b>0</b>	<b>5</b>	<b>100%</b>	<b>6</b>	<b>100%</b>
<b>Summary Metrics</b>																
Daily Average Vehicle Passes	588	447	537	521	662	593	702	631	699	625	687	711	Year to Date Monthly Average		2013 Monthly Average	
Average Issued Speed	19	20	23	16	22	19	17	24	22	22	21	23	617		491	
Average Issued Red Seconds	17.5	2.7	10.2	29.1	0.5	16.3	28.2	17.8	24.9	2.4	4.8	0.6	12.9		23.6	
Citation / Violation Issuance Rate	28%	18%	32%	5%	31%	37%	25%	27%	27%	50%	50%	20%	29%		26%	
Controllable Issuance Rate	100%	50%	70%	25%	100%	100%	100%	100%	100%	100%	100%	100%	87%		90%	



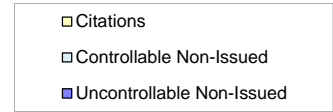
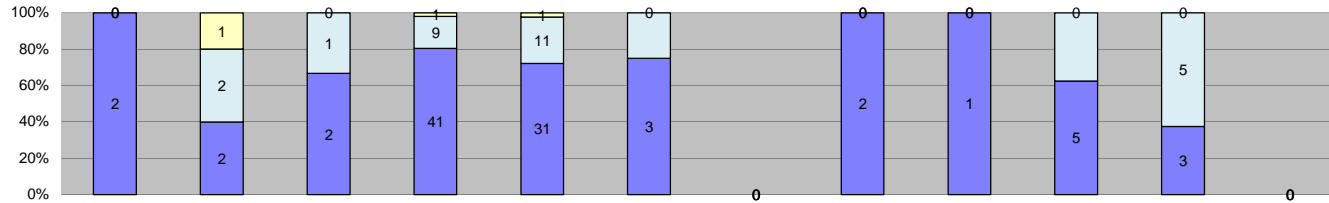
Los Angeles County MTA Expo Line  
 Approach Summary Report  
 Location 5028: SB to EB Flower @ 23rd



Events	Jan-14	Feb-14	Mar-14	Apr-14	May-14	Jun-14	Jul-14	Aug-14	Sep-14	Oct-14	Nov-14	Dec-14	Year to Date Monthly Average		2013 Monthly Average	
	Quantity	Quantity	Quantity	Quantity	Quantity	Quantity	Quantity	Quantity	Quantity	Quantity	Quantity	Quantity	Quantity	%	Quantity	%
<b>Non-Violations</b>	887	895	972	863	785	945	1,087	1,204	1,315	1,254	1,111	1,117	1,036	100%	806	100%
Violations	4	4	3	4	4	4	5	4	5	4	3	2	4	0%	4	0%
<b>Total:</b>	<b>891</b>	<b>899</b>	<b>975</b>	<b>867</b>	<b>789</b>	<b>949</b>	<b>1,092</b>	<b>1,208</b>	<b>1,320</b>	<b>1,258</b>	<b>1,114</b>	<b>1,119</b>	<b>1,040</b>	<b>100%</b>	<b>809</b>	<b>100%</b>
<b>Violations</b>																
Uncontrollable Non-Issued	1	0	2	2	2	3	1	1	0	3	1	2	2	32%	2	44%
Controllable Non-Issued	3	4	1	0	1	0	1	3	4	0	2	0	2	42%	2	30%
Citations	0	0	0	2	1	1	3	0	1	1	0	0	2	26%	1	26%
<b>Total:</b>	<b>4</b>	<b>4</b>	<b>3</b>	<b>4</b>	<b>4</b>	<b>4</b>	<b>5</b>	<b>4</b>	<b>5</b>	<b>4</b>	<b>3</b>	<b>2</b>	<b>6</b>	<b>74%</b>	<b>5</b>	<b>74%</b>
<b>Non-Violations</b>																
Rear Axle Violation	0	0	0	0	0	0	0	0	0	0	0	0	0	0%	0	0%
Emergency Vehicle	1	0	0	0	1	0	1	0	2	0	0	0	1	0%	1	0%
Right Turn	0	0	0	0	0	0	0	0	0	0	0	0	0	0%	0	0%
No Violation Occurred	886	895	972	863	784	945	1,086	1,204	1,313	1,254	1,111	1,117	1,036	100%	805	100%
<b>Total:</b>	<b>887</b>	<b>895</b>	<b>972</b>	<b>863</b>	<b>785</b>	<b>945</b>	<b>1,087</b>	<b>1,204</b>	<b>1,315</b>	<b>1,254</b>	<b>1,111</b>	<b>1,117</b>	<b>1,037</b>	<b>100%</b>	<b>806</b>	<b>100%</b>
<b>Uncontrollable Non-Issued Violations</b>																
No Plate	0	0	1	0	0	0	0	0	0	2	0	2	2	22%	1	15%
Out of State Plate	0	0	0	0	1	1	0	1	0	0	0	0	1	13%	0	0%
Glare on Plate	0	0	0	0	0	0	0	0	0	0	0	0	0	0%	0	0%
Illegible Plate	1	0	0	1	0	1	0	0	0	0	0	0	1	13%	1	12%
Plate Obstructed	0	0	0	0	0	1	0	0	0	0	0	0	1	13%	0	0%
Windshield Glare	0	0	0	0	0	0	0	0	0	0	0	0	0	0%	1	12%
Driver Obstructed	0	0	0	0	0	0	0	0	0	0	0	0	0	0%	0	0%
Car Obstructed	0	0	1	0	0	0	0	0	0	0	0	0	1	13%	2	24%
No DMV Match Found	0	0	0	0	0	0	1	0	0	0	1	0	1	13%	2	24%
LASD Expired	0	0	0	0	0	0	0	0	0	0	0	0	0	0%	0	0%
LASD Return	0	0	0	1	1	0	0	0	0	1	0	0	1	13%	1	12%
Other	0	0	0	0	0	0	0	0	0	0	0	0	0	0%	0	0%
<b>Total:</b>	<b>1</b>	<b>0</b>	<b>2</b>	<b>2</b>	<b>2</b>	<b>3</b>	<b>1</b>	<b>1</b>	<b>0</b>	<b>3</b>	<b>1</b>	<b>2</b>	<b>8</b>	<b>100%</b>	<b>8</b>	<b>100%</b>
<b>Controllable Non-Issued Violations</b>																
Framing of Plate	0	0	0	0	0	0	0	0	0	0	0	0	0	0%	0	0%
Focus / Clarity of Plate	0	0	0	0	0	0	0	0	0	0	0	0	0	0%	2	43%
Dark Interior	1	1	0	0	0	0	0	0	1	0	0	0	1	33%	1	21%
Framing of Driver	0	0	0	0	0	0	0	0	0	0	0	0	0	0%	0	0%
Focus / Clarity of Driver	0	0	0	0	0	0	0	0	0	0	0	0	0	0%	0	0%
Framing of Car	0	0	0	0	0	0	0	0	0	0	0	0	0	0%	0	0%
Data/Operator Error	0	0	0	0	0	0	0	0	0	0	0	0	0	0%	0	0%
Exposure	2	3	1	0	1	0	1	3	3	0	2	0	2	67%	2	36%
Equipment Malfunction	0	0	0	0	0	0	0	0	0	0	0	0	0	0%	0	0%
ACS Expired	0	0	0	0	0	0	0	0	0	0	0	0	0	0%	0	0%
<b>Total:</b>	<b>3</b>	<b>4</b>	<b>1</b>	<b>0</b>	<b>1</b>	<b>0</b>	<b>1</b>	<b>3</b>	<b>4</b>	<b>0</b>	<b>2</b>	<b>0</b>	<b>3</b>	<b>100%</b>	<b>5</b>	<b>100%</b>
<b>Summary Metrics</b>																
Daily Average Vehicle Passes	411	292	399	308	484	374	302	399	375	402	387	399	Year to Date Monthly Average		2013 Monthly Average	
Average Issued Speed	0	0	0	24	22	28	19	0	33	19	0	0	378		351	
Average Issued Red Seconds	0	0	0	45.5	65.2	0.4	68.9	0	99.9	76.9	0	0	24		19	
Citation / Violation Issuance Rate	0%	0%	0%	50%	25%	25%	60%	0%	20%	25%	0%	0%	59.5		53.0	
Controllable Issuance Rate	0%	0%	0%	100%	50%	100%	75%	0%	20%	100%	0%	0%	34%		45%	
													74%		70%	



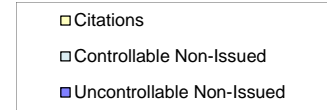
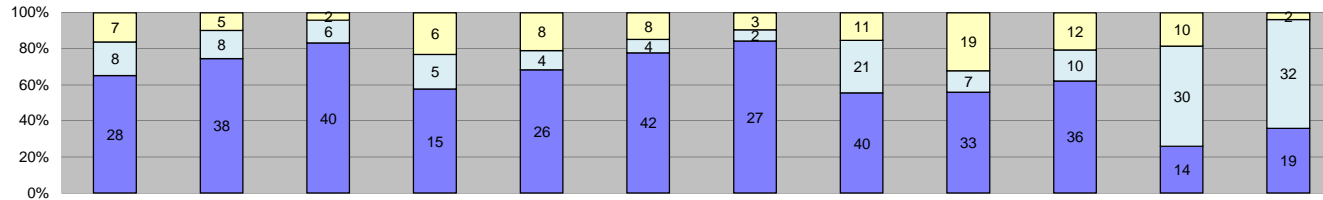
Los Angeles County MTA Expo Line  
 Approach Summary Report  
 Location 5038: SB to EB Flower @ Adams



Events	Jan-14	Feb-14	Mar-14	Apr-14	May-14	Jun-14	Jul-14	Aug-14	Sep-14	Oct-14	Nov-14	Dec-14	Year to Date Monthly Average		2013 Monthly Average		
													Quantity	%	Quantity	%	
Non-Violations	238	339	586	601	759	208	158	424	166	442	121	0	0	367	97%	549	97%
Violations	2	5	3	51	43	4	0	2	1	8	8	0	0	13	3%	19	3%
<b>Total:</b>	<b>240</b>	<b>344</b>	<b>589</b>	<b>652</b>	<b>802</b>	<b>212</b>	<b>158</b>	<b>426</b>	<b>167</b>	<b>450</b>	<b>129</b>	<b>0</b>	<b>0</b>	<b>380</b>	<b>100%</b>	<b>567</b>	<b>100%</b>
<b>Violations</b>																	
Uncontrollable Non-Issued	2	2	2	41	31	3	0	2	1	5	3	0	0	9	62%	15	74%
Controllable Non-Issued	0	2	1	9	11	1	0	0	0	3	5	0	0	5	31%	2	9%
Citations	0	1	0	1	1	0	0	0	0	0	0	0	0	1	7%	3	17%
<b>Total:</b>	<b>2</b>	<b>5</b>	<b>3</b>	<b>51</b>	<b>43</b>	<b>4</b>	<b>0</b>	<b>2</b>	<b>1</b>	<b>8</b>	<b>8</b>	<b>0</b>	<b>0</b>	<b>15</b>	<b>93%</b>	<b>20</b>	<b>83%</b>
<b>Non-Violations</b>																	
Rear Axle Violation	6	2	9	2	1	2	0	19	5	0	0	0	0	6	2%	13	2%
Emergency Vehicle	1	3	0	2	1	1	0	1	2	0	0	0	0	2	0%	2	0%
Right Turn	0	0	0	0	0	0	0	0	0	0	0	0	0	0	0%	0	0%
No Violation Occurred	231	334	577	597	757	205	158	404	159	442	121	0	0	362	98%	541	97%
<b>Total:</b>	<b>238</b>	<b>339</b>	<b>586</b>	<b>601</b>	<b>759</b>	<b>208</b>	<b>158</b>	<b>424</b>	<b>166</b>	<b>442</b>	<b>121</b>	<b>0</b>	<b>0</b>	<b>370</b>	<b>100%</b>	<b>556</b>	<b>100%</b>
<b>Uncontrollable Non-Issued Violations</b>																	
No Plate	0	0	0	2	2	1	0	0	0	0	0	0	0	2	8%	2	7%
Out of State Plate	0	0	0	0	0	0	0	0	0	0	0	0	0	0	0%	1	6%
Glare on Plate	0	0	0	0	0	0	0	0	0	1	0	0	0	1	5%	1	4%
Illegible Plate	0	0	0	0	0	0	0	0	0	0	0	0	0	0	0%	0	0%
Plate Obstructed	0	0	0	0	0	0	0	0	0	0	0	0	0	0	0%	0	0%
Windshield Glare	0	0	0	0	0	0	0	1	1	0	0	0	0	1	5%	4	17%
Driver Obstructed	0	1	1	8	12	1	0	0	0	3	3	0	0	4	19%	6	24%
Car Obstructed	0	1	0	2	2	0	0	0	0	0	0	0	0	2	8%	1	4%
No DMV Match Found	0	0	0	4	4	1	0	0	0	0	0	0	0	3	14%	2	10%
LASD Expired	0	0	0	0	0	0	0	0	0	0	0	0	0	0	0%	0	0%
LASD Return	1	0	0	11	8	0	0	0	0	1	0	0	0	5	24%	3	14%
Other	1	0	1	14	3	0	0	1	0	0	0	0	0	4	18%	3	14%
<b>Total:</b>	<b>2</b>	<b>2</b>	<b>2</b>	<b>41</b>	<b>31</b>	<b>3</b>	<b>0</b>	<b>2</b>	<b>1</b>	<b>5</b>	<b>3</b>	<b>0</b>	<b>0</b>	<b>22</b>	<b>100%</b>	<b>23</b>	<b>100%</b>
<b>Controllable Non-Issued Violations</b>																	
Framing of Plate	0	0	0	0	0	0	0	0	0	0	0	0	0	0	0%	0	0%
Focus / Clarity of Plate	0	0	0	0	0	0	0	0	0	0	0	0	0	0	0%	1	18%
Dark Interior	0	1	1	2	3	0	0	0	0	0	0	0	0	2	30%	1	18%
Framing of Driver	0	0	0	0	0	0	0	0	0	0	0	0	0	0	0%	0	0%
Focus / Clarity of Driver	0	0	0	0	0	0	0	0	0	0	0	0	0	0	0%	1	24%
Framing of Car	0	0	0	0	0	0	0	0	0	0	0	0	0	0	0%	0	0%
Data/Operator Error	0	0	0	0	0	0	0	0	0	0	0	0	0	0	0%	1	18%
Exposure	0	0	0	0	0	0	0	0	0	0	0	0	0	0	0%	0	0%
Equipment Malfunction	0	1	0	7	8	1	0	0	0	3	5	0	0	4	70%	1	22%
ACS Expired	0	0	0	0	0	0	0	0	0	0	0	0	0	0	0%	0	0%
<b>Total:</b>	<b>0</b>	<b>2</b>	<b>1</b>	<b>9</b>	<b>11</b>	<b>1</b>	<b>0</b>	<b>0</b>	<b>0</b>	<b>3</b>	<b>5</b>	<b>0</b>	<b>0</b>	<b>6</b>	<b>100%</b>	<b>6</b>	<b>100%</b>
<b>Summary Metrics</b>													<b>Year to Date Monthly Average</b>		<b>2013 Monthly Average</b>		
Daily Average Vehicle Passes	474	330	411	397	466	433	399	427	402	468	411	0	0	420		366	
Average Issued Speed	0	16	0	22	14	0	0	0	0	0	0	0	0	17		20	
Average Issued Red Seconds	0	64.7	0	1023.9	96.4	0	0	0	0	0	0	0	0	395.0		184.6	
Citation / Violation Issuance Rate	0%	20%	0%	2%	2%	0%	0%	0%	0%	0%	0%	0%	0%	8%		18%	
Controllable Issuance Rate	0%	33%	0%	10%	8%	0%	0%	0%	0%	0%	0%	0%	0%	17%		76%	



Los Angeles County MTA Expo Line  
 Approach Summary Report  
 Location 5048: SB to EB Flower at 28th

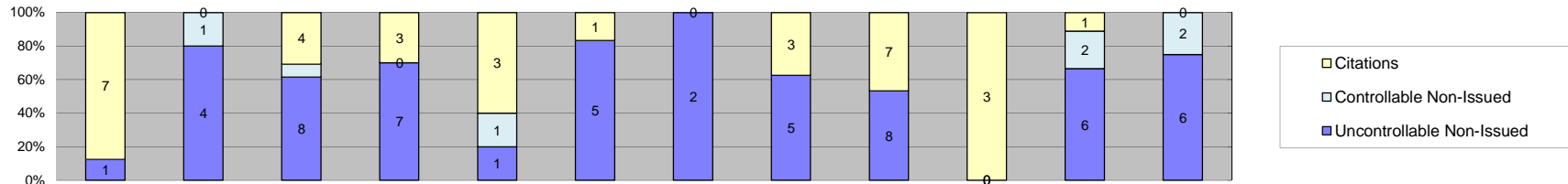


Events	Jan-14	Feb-14	Mar-14	Apr-14	May-14	Jun-14	Jul-14	Aug-14	Sep-14	Oct-14	Nov-14	Dec-14	Year to Date Monthly Average		2013 Monthly Average	
													Quantity	%	Quantity	%
Non-Violations	13	15	15	12	26	29	17	15	30	20	28	17	20	29%	16	32%
Violations	43	51	48	26	38	54	32	72	59	58	54	53	49	71%	35	68%
<b>Total:</b>	<b>56</b>	<b>66</b>	<b>63</b>	<b>38</b>	<b>64</b>	<b>83</b>	<b>49</b>	<b>87</b>	<b>89</b>	<b>78</b>	<b>82</b>	<b>70</b>	<b>69</b>	<b>100%</b>	<b>51</b>	<b>100%</b>
<b>Violations</b>																
Uncontrollable Non-Issued	28	38	40	15	26	42	27	40	33	36	14	19	30	61%	23	68%
Controllable Non-Issued	8	8	6	5	4	4	2	21	7	10	30	32	11	23%	4	11%
Citations	7	5	2	6	8	8	3	11	19	12	10	2	8	16%	7	21%
<b>Total:</b>	<b>43</b>	<b>51</b>	<b>48</b>	<b>26</b>	<b>38</b>	<b>54</b>	<b>32</b>	<b>72</b>	<b>59</b>	<b>58</b>	<b>54</b>	<b>53</b>	<b>49</b>	<b>84%</b>	<b>35</b>	<b>79%</b>
<b>Non-Violations</b>																
Rear Axle Violation	0	0	0	1	0	1	2	1	2	2	1	0	1	7%	3	18%
Emergency Vehicle	0	1	0	1	1	1	1	0	2	0	0	0	1	6%	2	11%
Right Turn	0	0	0	0	0	0	0	0	0	0	0	0	0	0%	0	0%
No Violation Occurred	13	14	15	10	25	27	14	14	26	18	27	17	18	88%	13	72%
<b>Total:</b>	<b>13</b>	<b>15</b>	<b>15</b>	<b>12</b>	<b>26</b>	<b>29</b>	<b>17</b>	<b>15</b>	<b>30</b>	<b>20</b>	<b>28</b>	<b>17</b>	<b>21</b>	<b>100%</b>	<b>18</b>	<b>100%</b>
<b>Uncontrollable Non-Issued Violations</b>																
No Plate	5	9	9	2	4	5	4	8	2	6	3	2	5	14%	3	12%
Out of State Plate	0	2	0	0	1	0	0	0	0	1	1	1	1	3%	1	3%
Glare on Plate	0	0	0	0	0	0	0	0	0	0	0	0	0	0%	0	0%
Illegible Plate	0	0	0	0	0	0	0	1	0	0	0	0	1	3%	1	3%
Plate Obstructed	1	1	0	0	0	2	0	0	0	0	0	0	1	4%	2	5%
Windshield Glare	2	3	5	1	5	10	5	10	9	0	1	7	5	15%	3	12%
Driver Obstructed	11	4	8	5	6	12	12	13	10	11	3	9	9	25%	7	24%
Car Obstructed	0	0	0	0	0	0	0	0	0	0	0	0	0	0%	1	3%
No DMV Match Found	0	2	5	1	1	2	1	0	2	0	2	0	2	6%	2	8%
LASD Expired	0	0	0	0	0	0	0	0	0	0	1	0	1	3%	0	0%
LASD Return	9	17	13	6	9	11	5	8	10	18	3	0	10	28%	9	30%
Other	0	0	0	0	0	0	0	0	0	0	0	0	0	0%	0	0%
<b>Total:</b>	<b>28</b>	<b>38</b>	<b>40</b>	<b>15</b>	<b>26</b>	<b>42</b>	<b>27</b>	<b>40</b>	<b>33</b>	<b>36</b>	<b>14</b>	<b>19</b>	<b>35</b>	<b>100%</b>	<b>29</b>	<b>100%</b>
<b>Controllable Non-Issued Violations</b>																
Framing of Plate	0	0	0	0	0	0	0	0	0	0	0	0	0	0%	0	0%
Focus / Clarity of Plate	0	0	0	0	0	0	0	0	0	0	0	0	0	0%	0	0%
Dark Interior	7	7	6	4	3	2	1	3	7	10	30	24	9	25%	4	66%
Framing of Driver	0	0	0	0	0	0	0	0	0	0	0	0	0	0%	0	0%
Focus / Clarity of Driver	0	0	0	0	1	1	0	0	0	0	0	5	2	7%	1	17%
Framing of Car	0	0	0	0	0	1	0	0	0	0	0	0	1	3%	0	0%
Data/Operator Error	0	0	0	0	0	0	0	17	0	0	0	0	17	50%	0	0%
Exposure	1	1	0	0	0	0	1	0	0	0	0	0	1	3%	1	17%
Equipment Malfunction	0	0	0	1	0	0	0	1	0	0	0	0	1	3%	0	0%
ACS Expired	0	0	0	0	0	0	0	0	0	0	0	3	3	9%	0	0%
<b>Total:</b>	<b>8</b>	<b>8</b>	<b>6</b>	<b>5</b>	<b>4</b>	<b>4</b>	<b>2</b>	<b>21</b>	<b>7</b>	<b>10</b>	<b>30</b>	<b>32</b>	<b>34</b>	<b>100%</b>	<b>6</b>	<b>100%</b>
<b>Summary Metrics</b>																
Daily Average Vehicle Passes	4,745	3,676	4,329	3,626	5,066	3,740	4,235	3,998	4,651	4,023	4,458	3,894	Year to Date Monthly Average		2013 Monthly Average	
Average Issued Speed	32	34	29	35	28	30	31	30	31	30	33	23	4,203		4,318	
Average Issued Red Seconds	0.3	0.5	0.5	0.8	0.8	0.8	1.1	0.5	0.4	0.6	0.7	0.2	0.6		0.5	
Citation / Violation Issuance Rate	16%	10%	4%	23%	21%	15%	9%	15%	32%	21%	19%	4%	16%		22%	
Controllable Issuance Rate	47%	38%	25%	55%	67%	67%	60%	34%	73%	55%	25%	6%	46%		71%	





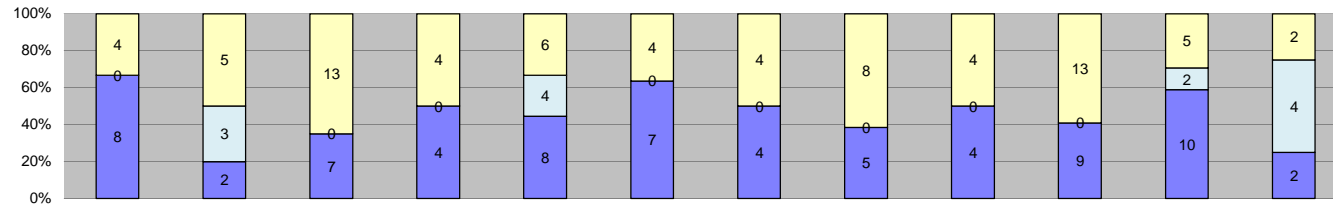
Los Angeles County MTA Expo Line  
 Approach Summary Report  
 Location 5058: SB to EB Flower @ 30th



Events	Year to Date												Year to Date Monthly Average		2013 Monthly Average	
	Jan-14	Feb-14	Mar-14	Apr-14	May-14	Jun-14	Jul-14	Aug-14	Sep-14	Oct-14	Nov-14	Dec-14	Quantity	%	Quantity	%
Non-Violations	111	100	132	118	127	99	103	89	102	116	118	138	113	94%	106	96%
Violations	8	5	13	10	5	6	2	8	15	3	9	8	8	6%	5	4%
<b>Total:</b>	<b>119</b>	<b>105</b>	<b>145</b>	<b>128</b>	<b>132</b>	<b>105</b>	<b>105</b>	<b>97</b>	<b>117</b>	<b>119</b>	<b>127</b>	<b>146</b>	<b>120</b>	<b>100%</b>	<b>111</b>	<b>100%</b>
<b>Violations</b>																
Uncontrollable Non-Issued	1	4	8	7	1	5	2	5	8	0	6	6	5	49%	2	35%
Controllable Non-Issued	0	1	1	0	1	0	0	0	0	0	2	2	1	14%	2	23%
Citations	7	0	4	3	3	1	0	3	7	3	1	0	4	36%	3	41%
<b>Total:</b>	<b>8</b>	<b>5</b>	<b>13</b>	<b>10</b>	<b>5</b>	<b>6</b>	<b>2</b>	<b>8</b>	<b>15</b>	<b>3</b>	<b>9</b>	<b>8</b>	<b>10</b>	<b>64%</b>	<b>6</b>	<b>59%</b>
<b>Non-Violations</b>																
Rear Axle Violation	0	0	0	0	0	0	0	0	0	0	0	0	0	0%	0	0%
Emergency Vehicle	0	2	0	0	0	0	1	0	0	0	1	0	1	1%	2	2%
Right Turn	0	0	0	0	0	0	0	0	0	0	0	0	0	0%	0	0%
No Violation Occurred	111	98	132	118	127	99	102	89	102	116	117	138	112	99%	105	98%
<b>Total:</b>	<b>111</b>	<b>100</b>	<b>132</b>	<b>118</b>	<b>127</b>	<b>99</b>	<b>103</b>	<b>89</b>	<b>102</b>	<b>116</b>	<b>118</b>	<b>138</b>	<b>114</b>	<b>100%</b>	<b>107</b>	<b>100%</b>
<b>Uncontrollable Non-Issued Violations</b>																
No Plate	0	0	0	0	0	1	1	4	1	0	2	0	2	15%	1	12%
Out of State Plate	0	1	1	1	0	0	0	0	0	0	0	0	1	9%	1	12%
Glare on Plate	0	0	0	0	0	0	0	0	0	0	0	0	0	0%	0	0%
Illegible Plate	0	0	1	0	0	0	0	0	0	0	0	0	1	9%	1	12%
Plate Obstructed	0	0	0	0	0	0	0	0	0	0	1	1	1	9%	0	0%
Windshield Glare	0	0	1	0	0	2	0	1	0	0	0	0	1	11%	1	12%
Driver Obstructed	1	0	0	0	0	0	0	0	0	0	0	1	1	9%	1	12%
Car Obstructed	0	0	0	0	0	0	0	0	0	0	0	0	0	0%	0	0%
No DMV Match Found	0	2	0	2	0	0	1	0	4	0	2	1	2	17%	2	19%
LASD Expired	0	0	0	0	0	0	0	0	0	0	0	0	0	0%	0	0%
LASD Return	0	1	5	4	1	2	0	0	3	0	2	3	3	22%	2	19%
Other	0	0	0	0	0	0	0	0	0	0	0	0	0	0%	0	0%
<b>Total:</b>	<b>1</b>	<b>4</b>	<b>8</b>	<b>7</b>	<b>1</b>	<b>5</b>	<b>2</b>	<b>5</b>	<b>8</b>	<b>0</b>	<b>6</b>	<b>6</b>	<b>12</b>	<b>100%</b>	<b>8</b>	<b>100%</b>
<b>Controllable Non-Issued Violations</b>																
Framing of Plate	0	0	0	0	0	0	0	0	0	0	0	0	0	0%	0	0%
Focus / Clarity of Plate	0	0	0	0	0	0	0	0	0	0	0	0	0	0%	0	0%
Dark Interior	0	0	0	0	1	0	0	0	0	0	2	0	2	27%	2	100%
Framing of Driver	0	0	0	0	0	0	0	0	0	0	0	0	0	0%	0	0%
Focus / Clarity of Driver	0	0	0	0	0	0	0	0	0	0	0	1	1	18%	0	0%
Framing of Car	0	0	0	0	0	0	0	0	0	0	0	0	0	0%	0	0%
Data/Operator Error	0	0	0	0	0	0	0	0	0	0	0	0	0	0%	0	0%
Exposure	0	0	1	0	0	0	0	0	0	0	0	0	1	18%	0	0%
Equipment Malfunction	0	1	0	0	0	0	0	0	0	0	0	0	1	18%	0	0%
ACS Expired	0	0	0	0	0	0	0	0	0	0	0	1	1	18%	0	0%
<b>Total:</b>	<b>0</b>	<b>1</b>	<b>1</b>	<b>0</b>	<b>1</b>	<b>0</b>	<b>0</b>	<b>0</b>	<b>0</b>	<b>0</b>	<b>2</b>	<b>2</b>	<b>6</b>	<b>100%</b>	<b>2</b>	<b>100%</b>
<b>Summary Metrics</b>																
Daily Average Vehicle Passes	297	182	239	204	306	237	281	305	279	299	245	221	Year to Date Monthly Average		2013 Monthly Average	
Average Issued Speed	17	0	18	21	17	26	0	20	22	18	21	0	258		251	
Average Issued Red Seconds	61.1	0	94.9	59.4	1.2	75.7	0	28.2	61.3	90.4	39.0	0	56.8		89.8	
Citation / Violation Issuance Rate	88%	0%	31%	30%	60%	17%	0%	38%	47%	100%	11%	0%	47%		55%	
Controllable Issuance Rate	100%	0%	80%	100%	75%	100%	0%	100%	100%	100%	33%	0%	88%		96%	



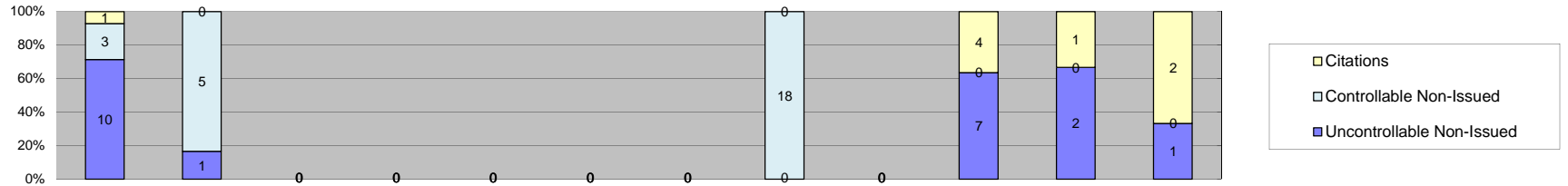
**Los Angeles County MTA Expo Line  
Approach Summary Report  
Location 5068: SB to EB Flower @ Jefferson**



Events	Jan-14	Feb-14	Mar-14	Apr-14	May-14	Jun-14	Jul-14	Aug-14	Sep-14	Oct-14	Nov-14	Dec-14	Year to Date Monthly Average		2013 Monthly Average	
													Quantity	%	Quantity	%
<b>Non-Violations</b>	103	90	86	69	82	78	97	93	92	117	104	101	93	88%	85	92%
Violations	12	10	20	8	18	11	8	13	8	22	17	8	13	12%	8	8%
<b>Total:</b>	<b>115</b>	<b>100</b>	<b>106</b>	<b>77</b>	<b>100</b>	<b>89</b>	<b>105</b>	<b>106</b>	<b>100</b>	<b>139</b>	<b>121</b>	<b>109</b>	<b>106</b>	<b>100%</b>	<b>93</b>	<b>100%</b>
<b>Violations</b>																
Uncontrollable Non-Issued	8	2	7	4	8	7	4	5	4	9	10	2	6	39%	3	38%
Controllable Non-Issued	0	3	0	0	4	0	0	0	0	0	2	4	3	22%	1	12%
Citations	4	5	13	4	6	4	4	8	4	13	5	2	6	40%	4	51%
<b>Total:</b>	<b>12</b>	<b>10</b>	<b>20</b>	<b>8</b>	<b>18</b>	<b>11</b>	<b>8</b>	<b>13</b>	<b>8</b>	<b>22</b>	<b>17</b>	<b>8</b>	<b>15</b>	<b>60%</b>	<b>9</b>	<b>49%</b>
<b>Non-Violations</b>																
Rear Axle Violation	0	0	0	0	0	0	0	0	0	0	0	0	0	0%	0	0%
Emergency Vehicle	0	1	1	0	0	0	1	2	0	1	2	0	1	1%	1	1%
Right Turn	0	0	0	0	0	0	0	0	0	0	0	0	0	0%	0	0%
No Violation Occurred	103	89	85	69	82	78	96	91	92	116	102	101	92	99%	85	99%
<b>Total:</b>	<b>103</b>	<b>90</b>	<b>86</b>	<b>69</b>	<b>82</b>	<b>78</b>	<b>97</b>	<b>93</b>	<b>92</b>	<b>117</b>	<b>104</b>	<b>101</b>	<b>93</b>	<b>100%</b>	<b>86</b>	<b>100%</b>
<b>Uncontrollable Non-Issued Violations</b>																
No Plate	1	0	1	0	0	2	0	2	1	1	3	1	2	11%	2	19%
Out of State Plate	0	0	1	0	0	0	1	0	0	0	0	0	1	8%	1	14%
Glare on Plate	0	0	0	0	0	0	0	0	0	0	0	0	0	0%	0	0%
Illegible Plate	0	0	0	1	0	0	0	0	0	1	0	0	1	8%	0	0%
Plate Obstructed	1	0	0	0	0	0	0	0	0	0	0	0	1	8%	0	0%
Windshield Glare	0	0	0	0	0	0	1	0	1	1	1	0	1	8%	1	10%
Driver Obstructed	0	0	1	0	1	0	1	0	0	0	1	0	1	8%	1	10%
Car Obstructed	0	0	0	0	0	0	0	0	0	0	1	0	1	8%	2	21%
No DMV Match Found	5	0	2	1	6	5	1	2	0	4	3	0	3	24%	1	14%
LASD Expired	0	0	0	0	0	0	0	0	0	0	1	0	1	8%	0	0%
LASD Return	1	2	2	2	1	0	0	1	2	2	0	1	2	12%	1	12%
Other	0	0	0	0	0	0	0	0	0	0	0	0	0	0%	0	0%
<b>Total:</b>	<b>8</b>	<b>2</b>	<b>7</b>	<b>4</b>	<b>8</b>	<b>7</b>	<b>4</b>	<b>5</b>	<b>4</b>	<b>9</b>	<b>10</b>	<b>2</b>	<b>13</b>	<b>100%</b>	<b>10</b>	<b>100%</b>
<b>Controllable Non-Issued Violations</b>																
Framing of Plate	0	0	0	0	0	0	0	0	0	0	0	0	0	0%	0	0%
Focus / Clarity of Plate	0	0	0	0	0	0	0	0	0	0	0	0	0	0%	0	0%
Dark Interior	0	0	0	0	2	0	0	0	0	0	2	1	2	22%	1	50%
Framing of Driver	0	0	0	0	0	0	0	0	0	0	0	0	0	0%	0	0%
Focus / Clarity of Driver	0	0	0	0	0	0	0	0	0	0	0	0	0	0%	0	0%
Framing of Car	0	0	0	0	0	0	0	0	0	0	0	0	0	0%	0	0%
Data/Operator Error	0	0	0	0	0	0	0	0	0	0	0	0	0	0%	0	0%
Exposure	0	2	0	0	2	0	0	0	0	0	0	0	2	26%	1	50%
Equipment Malfunction	0	1	0	0	0	0	0	0	0	0	0	0	1	13%	0	0%
ACS Expired	0	0	0	0	0	0	0	0	0	0	0	3	3	39%	0	0%
<b>Total:</b>	<b>0</b>	<b>3</b>	<b>0</b>	<b>0</b>	<b>4</b>	<b>0</b>	<b>0</b>	<b>0</b>	<b>0</b>	<b>0</b>	<b>2</b>	<b>4</b>	<b>8</b>	<b>100%</b>	<b>2</b>	<b>100%</b>
<b>Summary Metrics</b>																
Daily Average Vehicle Passes	1,070	817	1,271	882	1,181	1,004	1,058	1,112	998	1,023	899	765	Year to Date Monthly Average		2013 Monthly Average	
Average Issued Speed	19	23	20	22	18	25	22	22	21	22	19	20	1,007		931	
Average Issued Red Seconds	25.7	0.4	5.6	0.4	32.8	0.8	25.4	10.5	1.0	5.8	16.4	0.4	10.4		38.4	
Citation / Violation Issuance Rate	33%	50%	65%	50%	33%	36%	50%	62%	50%	59%	29%	25%	45%		51%	
Controllable Issuance Rate	100%	63%	100%	100%	60%	100%	100%	100%	100%	100%	71%	33%	86%		94%	



**Los Angeles County MTA Expo Line  
Approach Summary Report  
Location 5077: EB to NB Exposition @ Watt**

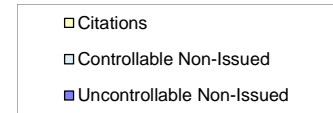
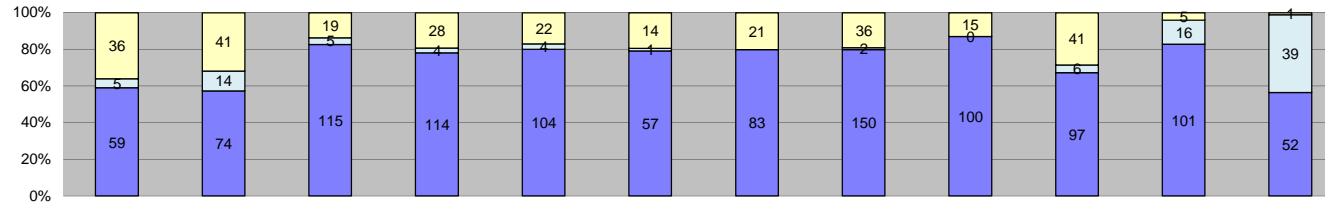


Events	Jan-14	Feb-14	Mar-14	Apr-14	May-14	Jun-14	Jul-14	Aug-14	Sep-14	Oct-14	Nov-14	Dec-14	Year to Date Monthly Average		2013 Monthly Average	
													Quantity	%	Quantity	%
Non-Violations	187	90	0	0	0	0	0	22	164	227	129	157	139	94%	101	89%
Violations	14	6	0	0	0	0	0	18	0	11	3	3	9	6%	12	11%
<b>Total:</b>	<b>201</b>	<b>96</b>	<b>0</b>	<b>0</b>	<b>0</b>	<b>0</b>	<b>0</b>	<b>40</b>	<b>164</b>	<b>238</b>	<b>132</b>	<b>160</b>	<b>149</b>	<b>100%</b>	<b>114</b>	<b>100%</b>
<b>Violations</b>																
Uncontrollable Non-Issued	10	1	0	0	0	0	0	0	0	7	2	1	4	28%	10	72%
Controllable Non-Issued	3	5	0	0	0	0	0	18	0	0	0	0	9	58%	1	7%
Citations	1	0	0	0	0	0	0	0	0	4	1	2	2	13%	3	20%
<b>Total:</b>	<b>14</b>	<b>6</b>	<b>0</b>	<b>0</b>	<b>0</b>	<b>0</b>	<b>0</b>	<b>18</b>	<b>0</b>	<b>11</b>	<b>3</b>	<b>3</b>	<b>15</b>	<b>87%</b>	<b>14</b>	<b>80%</b>
<b>Non-Violations</b>																
Rear Axle Violation	0	0	0	0	0	0	0	0	0	0	0	0	0	0%	0	0%
Emergency Vehicle	1	0	0	0	0	0	0	0	0	1	0	1	1	1%	1	1%
Right Turn	0	0	0	0	0	0	0	0	0	0	0	0	0	0%	0	0%
No Violation Occurred	186	90	0	0	0	0	0	22	164	226	129	156	139	99%	101	99%
<b>Total:</b>	<b>187</b>	<b>90</b>	<b>0</b>	<b>0</b>	<b>0</b>	<b>0</b>	<b>0</b>	<b>22</b>	<b>164</b>	<b>227</b>	<b>129</b>	<b>157</b>	<b>140</b>	<b>100%</b>	<b>102</b>	<b>100%</b>
<b>Uncontrollable Non-Issued Violations</b>																
No Plate	2	1	0	0	0	0	0	0	0	2	0	0	2	16%	3	18%
Out of State Plate	1	0	0	0	0	0	0	0	0	0	0	0	1	10%	1	6%
Glare on Plate	0	0	0	0	0	0	0	0	0	0	0	0	0	0%	1	6%
Illegible Plate	4	0	0	0	0	0	0	0	0	1	0	0	3	25%	4	23%
Plate Obstructed	0	0	0	0	0	0	0	0	0	0	0	0	0	0%	1	6%
Windshield Glare	0	0	0	0	0	0	0	0	0	0	2	1	2	15%	2	9%
Driver Obstructed	1	0	0	0	0	0	0	0	0	2	0	0	2	15%	2	9%
Car Obstructed	0	0	0	0	0	0	0	0	0	0	0	0	0	0%	1	6%
No DMV Match Found	0	0	0	0	0	0	0	0	0	0	0	0	0	0%	1	6%
LASD Expired	0	0	0	0	0	0	0	0	0	0	0	0	0	0%	0	0%
LASD Return	2	0	0	0	0	0	0	0	0	2	0	0	2	20%	2	12%
Other	0	0	0	0	0	0	0	0	0	0	0	0	0	0%	0	0%
<b>Total:</b>	<b>10</b>	<b>1</b>	<b>0</b>	<b>0</b>	<b>0</b>	<b>0</b>	<b>0</b>	<b>0</b>	<b>0</b>	<b>7</b>	<b>2</b>	<b>1</b>	<b>10</b>	<b>100%</b>	<b>18</b>	<b>100%</b>
<b>Controllable Non-Issued Violations</b>																
Framing of Plate	0	0	0	0	0	0	0	0	0	0	0	0	0	0%	0	0%
Focus / Clarity of Plate	0	1	0	0	0	0	0	0	0	0	0	0	1	8%	0	0%
Dark Interior	1	0	0	0	0	0	0	0	0	0	0	0	1	8%	1	50%
Framing of Driver	0	0	0	0	0	0	0	0	0	0	0	0	0	0%	0	0%
Focus / Clarity of Driver	0	0	0	0	0	0	0	0	0	0	0	0	0	0%	0	0%
Framing of Car	0	0	0	0	0	0	0	0	0	0	0	0	0	0%	0	0%
Data/Operator Error	0	0	0	0	0	0	0	0	0	0	0	0	0	0%	0	0%
Exposure	0	3	0	0	0	0	0	17	0	0	0	0	10	75%	1	50%
Equipment Malfunction	2	1	0	0	0	0	0	1	0	0	0	0	1	10%	0	0%
ACS Expired	0	0	0	0	0	0	0	0	0	0	0	0	0	0%	0	0%
<b>Total:</b>	<b>3</b>	<b>5</b>	<b>0</b>	<b>0</b>	<b>0</b>	<b>0</b>	<b>0</b>	<b>18</b>	<b>0</b>	<b>0</b>	<b>0</b>	<b>0</b>	<b>13</b>	<b>100%</b>	<b>2</b>	<b>100%</b>
<b>Summary Metrics</b>																
Daily Average Vehicle Passes	297	178	114	71	41	52	45	56	43	48	55	39	Year to Date Monthly Average		2013 Monthly Average	
Average Issued Speed	24	0	0	0	0	0	0	0	0	17	17	18	87		228	
Average Issued Red Seconds	99.9	0	0	0	0	0	0	0	0	75.0	2.0	69.3	61.6		90.1	
Citation / Violation Issuance Rate	7%	0%	0%	0%	0%	0%	0%	0%	0%	36%	33%	67%	36%		23%	
Controllable Issuance Rate	25%	0%	0%	0%	0%	0%	0%	0%	0%	100%	100%	100%	81%		96%	





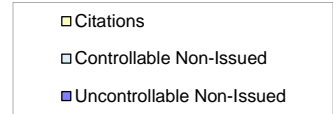
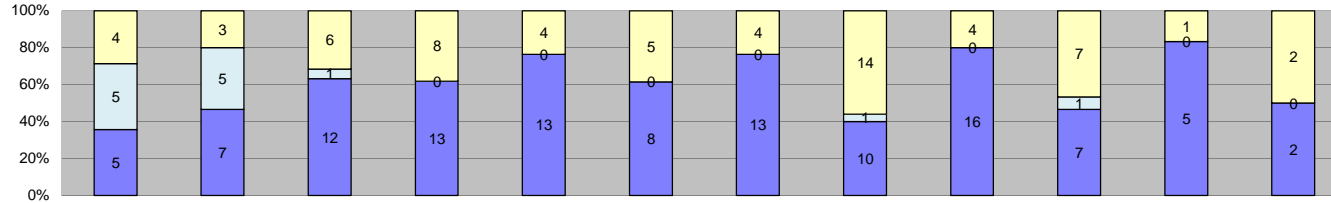
**Los Angeles County MTA Expo Line  
Approach Summary Report  
Location 5087: EB to NB Exposition @ Vermont**



Events	Jan-14	Feb-14	Mar-14	Apr-14	May-14	Jun-14	Jul-14	Aug-14	Sep-14	Oct-14	Nov-14	Dec-14	Year to Date Monthly Average		2013 Monthly Average	
													Quantity	%	Quantity	%
Non-Violations	201	167	230	219	211	221	232	256	194	214	176	170	208	63%	191	65%
Violations	100	129	139	146	130	72	104	188	115	144	122	92	123	37%	105	35%
<b>Total:</b>	<b>301</b>	<b>296</b>	<b>369</b>	<b>365</b>	<b>341</b>	<b>293</b>	<b>336</b>	<b>444</b>	<b>309</b>	<b>358</b>	<b>298</b>	<b>262</b>	<b>331</b>	<b>100%</b>	<b>296</b>	<b>100%</b>
<b>Violations</b>																
Uncontrollable Non-Issued	59	74	115	114	104	57	83	150	100	97	101	52	92	74%	58	54%
Controllable Non-Issued	5	14	5	4	4	1	0	2	0	6	16	39	10	8%	5	5%
Citations	36	41	19	28	22	14	21	36	15	41	5	1	23	19%	44	41%
<b>Total:</b>	<b>100</b>	<b>129</b>	<b>139</b>	<b>146</b>	<b>130</b>	<b>72</b>	<b>104</b>	<b>188</b>	<b>115</b>	<b>144</b>	<b>122</b>	<b>92</b>	<b>125</b>	<b>81%</b>	<b>108</b>	<b>59%</b>
<b>Non-Violations</b>																
Rear Axle Violation	0	0	0	0	0	0	0	0	0	0	0	0	0	0%	0	0%
Emergency Vehicle	6	2	2	0	1	1	2	4	3	1	0	1	2	1%	3	1%
Right Turn	0	0	0	0	0	0	0	0	0	0	0	0	0	0%	0	0%
No Violation Occurred	195	165	228	219	210	220	230	252	191	213	176	169	206	99%	189	99%
<b>Total:</b>	<b>201</b>	<b>167</b>	<b>230</b>	<b>219</b>	<b>211</b>	<b>221</b>	<b>232</b>	<b>256</b>	<b>194</b>	<b>214</b>	<b>176</b>	<b>170</b>	<b>208</b>	<b>100%</b>	<b>192</b>	<b>100%</b>
<b>Uncontrollable Non-Issued Violations</b>																
No Plate	6	7	13	13	9	9	8	15	14	18	8	8	11	11%	8	12%
Out of State Plate	2	1	1	2	2	1	1	3	5	1	2	1	2	2%	2	3%
Glare on Plate	0	2	1	2	5	2	2	0	1	0	5	0	3	3%	0	0%
Illegible Plate	7	6	10	5	2	1	3	12	4	8	5	10	6	6%	8	11%
Plate Obstructed	1	0	2	0	0	0	0	0	1	1	0	0	1	1%	2	3%
Windshield Glare	5	4	8	11	11	2	7	22	5	11	29	18	11	12%	13	19%
Driver Obstructed	2	2	3	1	2	0	5	1	3	4	10	3	3	3%	2	3%
Car Obstructed	0	0	0	0	0	0	0	2	0	0	1	0	2	2%	2	2%
No DMV Match Found	13	18	20	17	14	12	16	27	23	22	5	2	16	16%	12	18%
LASD Expired	1	0	0	0	0	0	0	0	0	0	1	0	1	1%	1	1%
LASD Return	22	34	57	63	59	30	41	68	44	32	35	10	41	43%	18	27%
Other	0	0	0	0	0	0	0	0	0	0	0	0	0	0%	0	0%
<b>Total:</b>	<b>59</b>	<b>74</b>	<b>115</b>	<b>114</b>	<b>104</b>	<b>57</b>	<b>83</b>	<b>150</b>	<b>100</b>	<b>97</b>	<b>101</b>	<b>52</b>	<b>96</b>	<b>100%</b>	<b>67</b>	<b>100%</b>
<b>Controllable Non-Issued Violations</b>																
Framing of Plate	1	0	0	0	0	0	0	1	0	0	0	0	1	4%	0	0%
Focus / Clarity of Plate	0	5	3	3	1	0	0	0	0	0	0	0	3	12%	4	17%
Dark Interior	3	4	2	1	2	0	0	0	0	4	12	16	6	22%	1	4%
Framing of Driver	0	0	0	0	0	0	0	0	0	0	0	0	0	0%	0	0%
Focus / Clarity of Driver	0	0	0	0	1	1	0	0	0	0	0	7	3	12%	0	0%
Framing of Car	0	0	0	0	0	0	0	0	0	0	0	0	0	0%	0	0%
Data/Operator Error	0	0	0	0	0	0	0	0	0	0	0	0	0	0%	0	0%
Exposure	1	4	0	0	0	0	0	1	0	2	0	0	2	8%	0	0%
Equipment Malfunction	0	1	0	0	0	0	0	0	0	0	0	7	4	16%	13	57%
ACS Expired	0	0	0	0	0	0	0	0	0	0	4	9	7	26%	5	22%
<b>Total:</b>	<b>5</b>	<b>14</b>	<b>5</b>	<b>4</b>	<b>4</b>	<b>1</b>	<b>0</b>	<b>2</b>	<b>0</b>	<b>6</b>	<b>16</b>	<b>39</b>	<b>25</b>	<b>100%</b>	<b>23</b>	<b>100%</b>
<b>Summary Metrics</b>																
Daily Average Vehicle Passes	1,938	1,661	1,791	1,671	1,575	1,737	1,625	1,501	1,822	1,654	1,422	1,102	Year to Date Monthly Average		2013 Monthly Average	
Average Issued Speed	20	19	20	19	20	20	20	20	21	21	19	16	20	20		
Average Issued Red Seconds	0.5	0.6	0.5	0.6	0.7	0.9	0.5	0.7	0.7	0.5	0.5	0.9	0.6	0.7		
Citation / Violation Issuance Rate	36%	32%	14%	19%	17%	19%	20%	19%	13%	28%	4%	1%	19%	43%		
Controllable Issuance Rate	88%	75%	79%	88%	85%	93%	100%	95%	100%	87%	24%	3%	76%	96%		



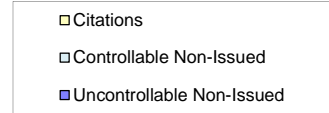
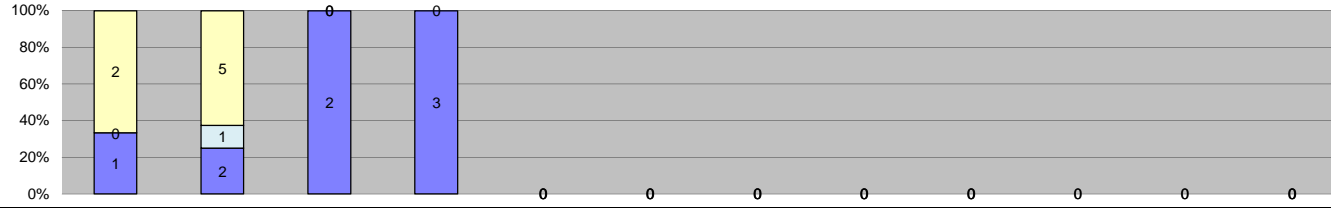
Los Angeles County MTA Expo Line  
 Approach Summary Report  
 Location 5089: WB to SB Exposition @ Vermont



Events	Jan-14												Year to Date Monthly Average		2013 Monthly Average	
	Jan-14	Feb-14	Mar-14	Apr-14	May-14	Jun-14	Jul-14	Aug-14	Sep-14	Oct-14	Nov-14	Dec-14	Quantity	%	Quantity	%
Non-Violations	154	88	113	130	150	127	145	128	118	104	65	104	119	88%	132	89%
Violations	14	15	19	21	17	13	17	25	20	15	6	4	16	12%	17	11%
<b>Total:</b>	<b>168</b>	<b>103</b>	<b>132</b>	<b>151</b>	<b>167</b>	<b>140</b>	<b>162</b>	<b>153</b>	<b>138</b>	<b>119</b>	<b>71</b>	<b>108</b>	<b>134</b>	<b>100%</b>	<b>149</b>	<b>100%</b>
<b>Violations</b>																
Uncontrollable Non-Issued	5	7	12	13	13	8	13	10	16	7	5	2	9	54%	8	47%
Controllable Non-Issued	5	5	1	0	0	0	0	1	0	1	0	0	3	15%	2	12%
Citations	4	3	6	8	4	5	4	14	4	7	1	2	5	30%	7	40%
<b>Total:</b>	<b>14</b>	<b>15</b>	<b>19</b>	<b>21</b>	<b>17</b>	<b>13</b>	<b>17</b>	<b>25</b>	<b>20</b>	<b>15</b>	<b>6</b>	<b>4</b>	<b>17</b>	<b>70%</b>	<b>18</b>	<b>60%</b>
<b>Non-Violations</b>																
Rear Axle Violation	0	0	0	0	0	0	0	0	0	0	0	0	0	0%	2	1%
Emergency Vehicle	4	0	3	0	1	1	2	1	3	1	1	1	2	2%	3	2%
Right Turn	0	0	0	0	0	0	0	0	0	0	0	0	0	0%	0	0%
No Violation Occurred	150	88	110	130	149	126	143	127	115	103	64	103	117	98%	130	96%
<b>Total:</b>	<b>154</b>	<b>88</b>	<b>113</b>	<b>130</b>	<b>150</b>	<b>127</b>	<b>145</b>	<b>128</b>	<b>118</b>	<b>104</b>	<b>65</b>	<b>104</b>	<b>119</b>	<b>100%</b>	<b>134</b>	<b>100%</b>
<b>Uncontrollable Non-Issued Violations</b>																
No Plate	0	3	4	3	4	2	3	3	5	2	1	0	3	17%	2	11%
Out of State Plate	0	0	0	0	2	0	0	0	1	0	0	0	2	8%	1	6%
Glare on Plate	0	1	1	1	5	2	2	0	3	2	0	0	2	12%	1	8%
Illegible Plate	3	1	1	5	0	0	5	2	2	0	2	0	3	15%	3	16%
Plate Obstructed	0	0	0	0	0	0	0	0	1	0	0	0	1	6%	1	6%
Windshield Glare	1	1	0	0	0	1	0	0	1	0	0	0	1	6%	2	9%
Driver Obstructed	0	0	0	0	1	1	0	0	0	0	0	1	1	6%	1	7%
Car Obstructed	0	0	1	0	0	0	0	0	0	0	0	0	1	6%	1	6%
No DMV Match Found	0	0	2	2	0	1	1	3	2	3	0	0	2	11%	2	12%
LASD Expired	0	0	0	0	0	0	0	0	0	0	0	1	1	6%	1	6%
LASD Return	1	1	3	2	1	1	2	2	1	0	2	0	2	9%	2	11%
Other	0	0	0	0	0	0	0	0	0	0	0	0	0	0%	0	0%
<b>Total:</b>	<b>5</b>	<b>7</b>	<b>12</b>	<b>13</b>	<b>13</b>	<b>8</b>	<b>13</b>	<b>10</b>	<b>16</b>	<b>7</b>	<b>5</b>	<b>2</b>	<b>18</b>	<b>100%</b>	<b>16</b>	<b>100%</b>
<b>Controllable Non-Issued Violations</b>																
Framing of Plate	0	0	0	0	0	0	0	0	0	0	0	0	0	0%	0	0%
Focus / Clarity of Plate	0	2	0	0	0	0	0	0	0	0	0	0	2	27%	1	25%
Dark Interior	0	0	1	0	0	0	0	0	0	0	0	0	1	13%	0	0%
Framing of Driver	0	0	0	0	0	0	0	0	0	0	0	0	0	0%	0	0%
Focus / Clarity of Driver	0	0	0	0	0	0	0	0	0	0	0	0	0	0%	0	0%
Framing of Car	0	0	0	0	0	0	0	0	0	0	0	0	0	0%	0	0%
Data/Operator Error	0	0	0	0	0	0	0	0	0	0	0	0	0	0%	0	0%
Exposure	5	2	0	0	0	0	0	0	0	0	0	0	4	47%	2	50%
Equipment Malfunction	0	1	0	0	0	0	0	1	0	1	0	0	1	13%	0	0%
ACS Expired	0	0	0	0	0	0	0	0	0	0	0	0	0	0%	1	25%
<b>Total:</b>	<b>5</b>	<b>5</b>	<b>1</b>	<b>0</b>	<b>0</b>	<b>0</b>	<b>0</b>	<b>1</b>	<b>0</b>	<b>1</b>	<b>0</b>	<b>0</b>	<b>8</b>	<b>100%</b>	<b>4</b>	<b>100%</b>
<b>Summary Metrics</b>																
Daily Average Vehicle Passes													Year to Date Monthly Average		2013 Monthly Average	
Average Issued Speed	1,662	1,377	1,570	1,451	1,667	1,551	1,812	1,655	1,302	1,287	1,502	1,152	1,499		1,357	
Average Issued Red Seconds	23	22	22	21	24	22	23	20	21	21	17	21	21		21	
Average Issued Red Seconds	1.0	0.4	17.0	22.4	0.6	0.4	1.0	0.6	0.2	14.7	0.8	0.2	4.9		4.1	
Citation / Violation Issuance Rate	29%	20%	32%	38%	24%	38%	24%	56%	20%	47%	17%	50%	33%		42%	
Controllable Issuance Rate	44%	38%	86%	100%	100%	100%	100%	93%	100%	88%	100%	100%	87%		89%	



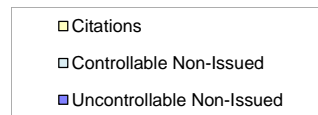
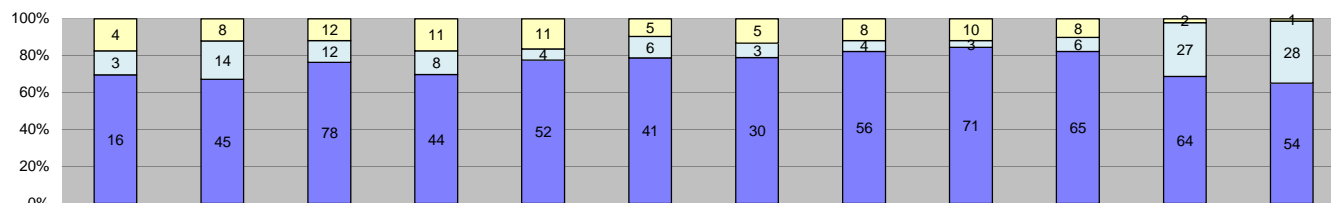
**Los Angeles County MTA Expo Line  
Approach Summary Report  
Location 5097: EB to NB Exposition @ Raymond**



Events	Jan-14	Feb-14	Mar-14	Apr-14	May-14	Jun-14	Jul-14	Aug-14	Sep-14	Oct-14	Nov-14	Dec-14	Year to Date Monthly Average		2013 Monthly Average		
													Quantity	%	Quantity	%	
Non-Violations	1,142	1,023	957	61	0	0	0	0	0	0	0	0	0	796	99%	1,419	100%
Violations	3	8	2	3	0	0	0	0	0	0	0	0	0	4	1%	6	0%
<b>Total:</b>	<b>1,145</b>	<b>1,031</b>	<b>959</b>	<b>64</b>	<b>0</b>	<b>0</b>	<b>0</b>	<b>0</b>	<b>0</b>	<b>0</b>	<b>0</b>	<b>0</b>	<b>0</b>	<b>800</b>	<b>100%</b>	<b>1,425</b>	<b>100%</b>
<b>Violations</b>																	
Uncontrollable Non-Issued	1	2	2	3	0	0	0	0	0	0	0	0	0	2	31%	4	52%
Controllable Non-Issued	0	1	0	0	0	0	0	0	0	0	0	0	0	1	15%	1	15%
Citations	2	5	0	0	0	0	0	0	0	0	0	0	0	4	54%	2	33%
<b>Total:</b>	<b>3</b>	<b>8</b>	<b>2</b>	<b>3</b>	<b>0</b>	<b>0</b>	<b>0</b>	<b>0</b>	<b>0</b>	<b>0</b>	<b>0</b>	<b>0</b>	<b>0</b>	<b>7</b>	<b>46%</b>	<b>7</b>	<b>67%</b>
<b>Non-Violations</b>																	
Rear Axle Violation	3	0	2	0	0	0	0	0	0	0	0	0	0	3	0%	2	0%
Emergency Vehicle	1	2	0	0	0	0	0	0	0	0	0	0	0	2	0%	2	0%
Right Turn	0	0	0	0	0	0	0	0	0	0	0	0	0	0	0%	0	0%
No Violation Occurred	1,138	1,021	955	61	0	0	0	0	0	0	0	0	0	794	99%	1,418	100%
<b>Total:</b>	<b>1,142</b>	<b>1,023</b>	<b>957</b>	<b>61</b>	<b>0</b>	<b>0</b>	<b>0</b>	<b>0</b>	<b>0</b>	<b>0</b>	<b>0</b>	<b>0</b>	<b>0</b>	<b>798</b>	<b>100%</b>	<b>1,422</b>	<b>100%</b>
<b>Uncontrollable Non-Issued Violations</b>																	
No Plate	0	0	0	0	0	0	0	0	0	0	0	0	0	0	0%	1	10%
Out of State Plate	0	0	0	0	0	0	0	0	0	0	0	0	0	0	0%	0	0%
Glare on Plate	0	0	0	0	0	0	0	0	0	0	0	0	0	0	0%	0	0%
Illegible Plate	0	0	0	0	0	0	0	0	0	0	0	0	0	0	0%	0	0%
Plate Obstructed	0	0	0	0	0	0	0	0	0	0	0	0	0	0	0%	0	0%
Windshield Glare	0	0	0	0	0	0	0	0	0	0	0	0	0	0	0%	2	16%
Driver Obstructed	0	0	0	0	0	0	0	0	0	0	0	0	0	0	0%	2	19%
Car Obstructed	0	0	0	0	0	0	0	0	0	0	0	0	0	0	0%	0	0%
No DMV Match Found	0	1	0	0	0	0	0	0	0	0	0	0	0	1	25%	0	0%
LASD Expired	0	0	0	0	0	0	0	0	0	0	0	0	0	0	0%	0	0%
LASD Return	1	1	1	0	0	0	0	0	0	0	0	0	0	1	25%	2	16%
Other	0	0	1	3	0	0	0	0	0	0	0	0	0	2	50%	4	39%
<b>Total:</b>	<b>1</b>	<b>2</b>	<b>2</b>	<b>3</b>	<b>0</b>	<b>0</b>	<b>0</b>	<b>0</b>	<b>0</b>	<b>0</b>	<b>0</b>	<b>0</b>	<b>0</b>	<b>4</b>	<b>100%</b>	<b>10</b>	<b>100%</b>
<b>Controllable Non-Issued Violations</b>																	
Framing of Plate	0	0	0	0	0	0	0	0	0	0	0	0	0	0	0%	0	0%
Focus / Clarity of Plate	0	0	0	0	0	0	0	0	0	0	0	0	0	0	0%	0	0%
Dark Interior	0	0	0	0	0	0	0	0	0	0	0	0	0	0	0%	0	0%
Framing of Driver	0	0	0	0	0	0	0	0	0	0	0	0	0	0	0%	0	0%
Focus / Clarity of Driver	0	0	0	0	0	0	0	0	0	0	0	0	0	0	0%	0	0%
Framing of Car	0	0	0	0	0	0	0	0	0	0	0	0	0	0	0%	0	0%
Data/Operator Error	0	0	0	0	0	0	0	0	0	0	0	0	0	0	0%	1	33%
Exposure	0	1	0	0	0	0	0	0	0	0	0	0	0	1	100%	0	0%
Equipment Malfunction	0	0	0	0	0	0	0	0	0	0	0	0	0	0	0%	1	33%
ACS Expired	0	0	0	0	0	0	0	0	0	0	0	0	0	0	0%	1	33%
<b>Total:</b>	<b>0</b>	<b>1</b>	<b>0</b>	<b>0</b>	<b>0</b>	<b>0</b>	<b>0</b>	<b>0</b>	<b>0</b>	<b>0</b>	<b>0</b>	<b>0</b>	<b>0</b>	<b>1</b>	<b>100%</b>	<b>3</b>	<b>100%</b>
<b>Summary Metrics</b>																	
Daily Average Vehicle Passes	995	624	891	682	837	765	502	478	601	499	431	389		Year to Date Monthly Average		2013 Monthly Average	
Average Issued Speed	16	17	0	0	0	0	0	0	0	0	0	0		641		751	
Average Issued Red Seconds	232.6	102.0	0	0	0	0	0	0	0	0	0	0		167.3		208.0	
Citation / Violation Issuance Rate	67%	63%	0%	0%	0%	0%	0%	0%	0%	0%	0%	0%		65%		43%	
Controllable Issuance Rate	100%	83%	0%	0%	0%	0%	0%	0%	0%	0%	0%	0%		92%		85%	



**Los Angeles County MTA Expo Line  
Approach Summary Report  
Location 5107: EB to NB Exposition @ Normandie**

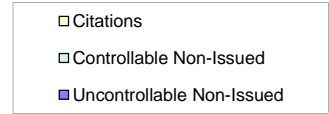
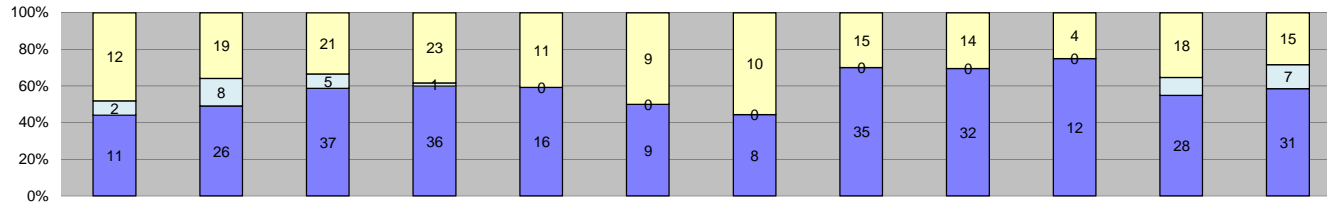


Events	2014												Year to Date Monthly Average		2013 Monthly Average	
	Jan-14	Feb-14	Mar-14	Apr-14	May-14	Jun-14	Jul-14	Aug-14	Sep-14	Oct-14	Nov-14	Dec-14	Quantity	%	Quantity	%
Non-Violations	34	78	153	125	133	137	123	136	113	124	151	122	119	64%	115	66%
Violations	23	67	102	63	67	52	38	68	84	79	93	83	68	36%	59	34%
<b>Total:</b>	<b>57</b>	<b>145</b>	<b>255</b>	<b>188</b>	<b>200</b>	<b>189</b>	<b>161</b>	<b>204</b>	<b>197</b>	<b>203</b>	<b>244</b>	<b>205</b>	<b>187</b>	<b>100%</b>	<b>174</b>	<b>100%</b>
<b>Violations</b>																
Uncontrollable Non-Issued	16	45	78	44	52	41	30	56	71	65	64	54	51	75%	43	73%
Controllable Non-Issued	3	14	12	8	4	6	3	4	3	6	27	28	10	14%	6	11%
Citations	4	8	12	11	11	5	5	8	10	8	2	1	7	10%	10	17%
<b>Total:</b>	<b>23</b>	<b>67</b>	<b>102</b>	<b>63</b>	<b>67</b>	<b>52</b>	<b>38</b>	<b>68</b>	<b>84</b>	<b>79</b>	<b>93</b>	<b>83</b>	<b>68</b>	<b>90%</b>	<b>60</b>	<b>83%</b>
<b>Non-Violations</b>																
Rear Axle Violation	0	1	0	0	0	0	0	0	0	0	0	0	1	1%	1	1%
Emergency Vehicle	0	0	0	0	0	2	1	4	1	0	1	1	2	1%	4	3%
Right Turn	0	0	0	0	0	0	0	0	0	0	0	0	0	0%	0	0%
No Violation Occurred	34	77	153	125	133	135	122	132	112	124	150	121	118	98%	113	96%
<b>Total:</b>	<b>34</b>	<b>78</b>	<b>153</b>	<b>125</b>	<b>133</b>	<b>137</b>	<b>123</b>	<b>136</b>	<b>113</b>	<b>124</b>	<b>151</b>	<b>122</b>	<b>121</b>	<b>100%</b>	<b>117</b>	<b>100%</b>
<b>Uncontrollable Non-Issued Violations</b>																
No Plate	1	4	14	7	8	5	1	6	6	10	9	7	7	11%	4	8%
Out of State Plate	0	0	1	0	1	1	2	0	1	1	1	3	1	2%	1	3%
Glare on Plate	0	0	0	0	8	3	0	0	0	2	1	0	4	6%	0	0%
Illegible Plate	2	4	7	5	1	1	3	6	2	2	2	2	3	5%	4	8%
Plate Obstructed	0	1	0	0	0	1	0	0	2	3	0	3	2	3%	2	4%
Windshield Glare	8	12	26	4	12	11	7	16	24	10	34	22	16	27%	17	33%
Driver Obstructed	1	0	1	2	3	4	1	2	2	7	2	4	3	5%	2	3%
Car Obstructed	0	0	0	0	0	0	0	0	0	1	0	0	1	2%	2	4%
No DMV Match Found	3	4	3	7	5	4	5	7	11	9	5	4	6	10%	5	9%
LASD Expired	0	0	0	0	0	0	0	0	0	0	1	0	1	2%	0	0%
LASD Return	1	20	26	19	14	11	11	19	23	20	9	9	15	26%	14	28%
Other	0	0	0	0	0	0	0	0	0	0	0	0	0	0%	0	0%
<b>Total:</b>	<b>16</b>	<b>45</b>	<b>78</b>	<b>44</b>	<b>52</b>	<b>41</b>	<b>30</b>	<b>56</b>	<b>71</b>	<b>65</b>	<b>64</b>	<b>54</b>	<b>57</b>	<b>100%</b>	<b>51</b>	<b>100%</b>
<b>Controllable Non-Issued Violations</b>																
Framing of Plate	0	0	0	0	0	0	0	0	0	0	0	0	0	0%	0	0%
Focus / Clarity of Plate	0	3	0	1	0	0	0	0	0	0	0	0	2	7%	2	14%
Dark Interior	0	4	6	6	4	5	2	3	3	6	9	13	6	19%	4	29%
Framing of Driver	0	0	0	0	0	0	0	0	0	0	0	0	0	0%	1	7%
Focus / Clarity of Driver	0	0	0	0	0	0	0	0	0	0	8	8	8	28%	1	7%
Framing of Car	0	0	0	0	0	0	0	0	0	0	0	0	0	0%	0	0%
Data/Operator Error	0	0	0	0	0	0	0	0	0	0	0	0	0	0%	1	7%
Exposure	0	4	0	0	0	0	0	1	0	0	0	0	3	9%	1	7%
Equipment Malfunction	3	3	6	1	0	1	1	0	0	0	9	1	3	11%	4	28%
ACS Expired	0	0	0	0	0	0	0	0	0	0	9	6	8	26%	0	0%
<b>Total:</b>	<b>3</b>	<b>14</b>	<b>12</b>	<b>8</b>	<b>4</b>	<b>6</b>	<b>3</b>	<b>4</b>	<b>3</b>	<b>6</b>	<b>27</b>	<b>28</b>	<b>29</b>	<b>100%</b>	<b>14</b>	<b>100%</b>
<b>Summary Metrics</b>																
Daily Average Vehicle Passes	1,424	1,106	1,292	1,136	1,337	1,249	998	1,101	1,033	1,401	1,156	1,102	Year to Date Monthly Average		2013 Monthly Average	
Average Issued Speed	22	20	22	21	21	23	20	23	18	20	20	20	21		21	
Average Issued Red Seconds	0.6	0.4	0.5	0.6	9.5	0.4	19.1	0.6	0.7	9.3	0.5	0.3	3.5		1.1	
Citation / Violation Issuance Rate	17%	12%	12%	17%	16%	10%	13%	12%	12%	10%	2%	1%	11%		18%	
Controllable Issuance Rate	57%	36%	50%	58%	73%	45%	63%	67%	77%	57%	7%	3%	49%		62%	





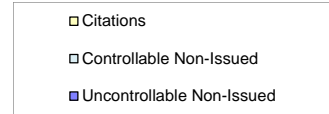
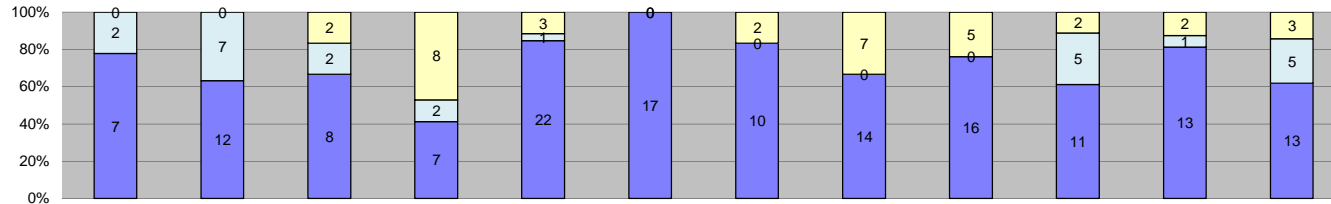
Los Angeles County MTA Expo Line  
 Approach Summary Report  
 Location 5109: WB to SB Exposition @ Normandie



Events	Jan-14	Feb-14	Mar-14	Apr-14	May-14	Jun-14	Jul-14	Aug-14	Sep-14	Oct-14	Nov-14	Dec-14	Year to Date Monthly Average		2013 Monthly Average		
													Quantity	%	Quantity	%	
Non-Violations	200	169	198	207	124	81	251	225	170	96	179	188	174	81%	211	82%	
Violations	25	53	63	60	27	18	18	50	46	16	51	53	40	19%	47	18%	
<b>Total:</b>	<b>225</b>	<b>222</b>	<b>261</b>	<b>267</b>	<b>151</b>	<b>99</b>	<b>269</b>	<b>275</b>	<b>216</b>	<b>112</b>	<b>230</b>	<b>241</b>	<b>214</b>	<b>100%</b>	<b>259</b>	<b>100%</b>	
<b>Violations</b>																	
Uncontrollable Non-Issued	11	26	37	36	16	9	8	35	32	12	28	31	23	55%	22	45%	
Controllable Non-Issued	2	8	5	1	0	0	0	0	0	0	5	7	5	11%	2	4%	
Citations	12	19	21	23	11	9	10	15	14	4	18	15	14	34%	24	50%	
<b>Total:</b>	<b>25</b>	<b>53</b>	<b>63</b>	<b>60</b>	<b>27</b>	<b>18</b>	<b>18</b>	<b>50</b>	<b>46</b>	<b>16</b>	<b>51</b>	<b>53</b>	<b>42</b>	<b>66%</b>	<b>48</b>	<b>50%</b>	
<b>Non-Violations</b>																	
Rear Axle Violation	0	0	0	0	0	0	0	0	0	0	0	0	0	0%	1	0%	
Emergency Vehicle	4	0	1	3	1	1	2	5	0	1	2	3	2	1%	3	1%	
Right Turn	0	0	0	0	0	0	0	0	0	0	0	0	0	0%	0	0%	
No Violation Occurred	196	169	197	204	123	80	249	220	170	95	177	185	172	99%	208	98%	
<b>Total:</b>	<b>200</b>	<b>169</b>	<b>198</b>	<b>207</b>	<b>124</b>	<b>81</b>	<b>251</b>	<b>225</b>	<b>170</b>	<b>96</b>	<b>179</b>	<b>188</b>	<b>174</b>	<b>100%</b>	<b>212</b>	<b>100%</b>	
<b>Uncontrollable Non-Issued Violations</b>																	
No Plate	3	6	7	2	1	2	4	9	9	2	7	6	5	15%	5	17%	
Out of State Plate	1	0	2	0	1	2	0	1	0	1	0	1	1	4%	2	6%	
Glare on Plate	0	1	1	4	0	0	0	0	2	0	1	0	2	6%	1	5%	
Illegible Plate	3	4	4	7	0	0	0	4	2	2	1	5	4	11%	6	19%	
Plate Obstructed	0	1	0	1	0	1	0	1	1	0	2	1	1	4%	1	3%	
Windshield Glare	0	0	1	0	0	0	0	2	0	0	1	3	2	5%	2	8%	
Driver Obstructed	1	1	0	0	0	0	0	2	0	0	5	1	2	6%	2	8%	
Car Obstructed	0	0	0	0	0	0	0	1	0	0	0	1	1	3%	1	3%	
No DMV Match Found	2	6	11	9	6	3	2	9	7	6	2	6	6	18%	4	13%	
LASD Expired	0	0	0	0	0	0	0	0	0	0	3	0	3	9%	0	0%	
LASD Return	1	7	11	13	8	1	2	6	11	1	6	7	6	19%	5	18%	
Other	0	0	0	0	0	0	0	0	0	0	0	0	0	0%	0	0%	
<b>Total:</b>	<b>11</b>	<b>26</b>	<b>37</b>	<b>36</b>	<b>16</b>	<b>9</b>	<b>8</b>	<b>35</b>	<b>32</b>	<b>12</b>	<b>28</b>	<b>31</b>	<b>32</b>	<b>100%</b>	<b>29</b>	<b>100%</b>	
<b>Controllable Non-Issued Violations</b>																	
Framing of Plate	0	0	1	0	0	0	0	0	0	0	0	0	1	7%	1	11%	
Focus / Clarity of Plate	0	2	2	0	0	0	0	0	0	0	0	0	2	13%	2	22%	
Dark Interior	0	0	0	1	0	0	0	0	0	0	2	1	1	9%	1	11%	
Framing of Driver	0	0	0	0	0	0	0	0	0	0	0	0	0	0%	0	0%	
Focus / Clarity of Driver	0	0	0	0	0	0	0	0	0	0	0	0	0	0%	0	0%	
Framing of Car	0	0	0	0	0	0	0	0	0	0	0	0	0	0%	0	0%	
Data/Operator Error	0	0	0	0	0	0	0	0	0	0	2	0	2	13%	0	0%	
Exposure	2	5	0	0	0	0	0	0	0	0	0	0	4	24%	2	22%	
Equipment Malfunction	0	1	2	0	0	0	0	0	0	0	0	0	2	10%	2	22%	
ACS Expired	0	0	0	0	0	0	0	0	0	0	1	6	4	24%	1	11%	
<b>Total:</b>	<b>2</b>	<b>8</b>	<b>5</b>	<b>1</b>	<b>0</b>	<b>0</b>	<b>0</b>	<b>0</b>	<b>0</b>	<b>0</b>	<b>5</b>	<b>7</b>	<b>15</b>	<b>100%</b>	<b>9</b>	<b>100%</b>	
<b>Summary Metrics</b>																	
Daily Average Vehicle Passes	1,102	575	985	1,198	1,055	1,132	999	1,254	1,002	1,354	996	1,125	Year to Date Monthly Average		2013 Monthly Average		
Average Issued Speed	25	21	21	22	21	24	23	22	23	22	22	23	1,065		930		
Average Issued Red Seconds	0.6	5.8	2.8	4.9	0.5	0.7	0.7	0.6	1.2	0.6	19.5	0.5	3.2		3.9		
Citation / Violation Issuance Rate	48%	36%	33%	38%	41%	50%	56%	30%	30%	25%	35%	28%	38%		53%		
Controllable Issuance Rate	86%	70%	81%	96%	100%	100%	100%	100%	100%	100%	78%	68%	90%		96%		



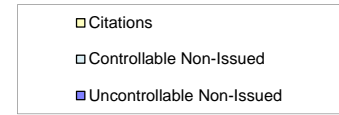
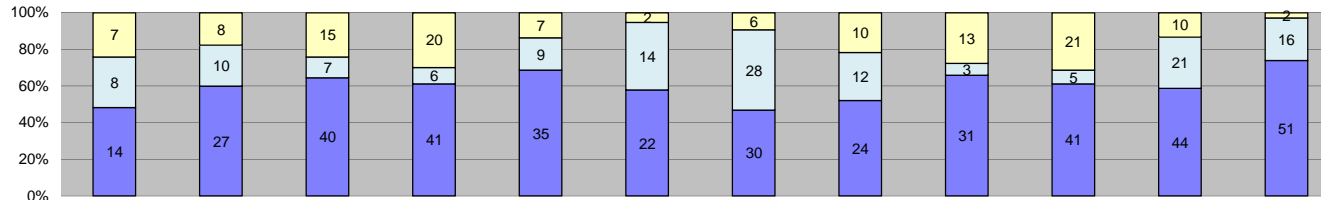
Los Angeles County MTA Expo Line  
 Approach Summary Report  
 Location 5117: EB to NB Exposition @ Halldale



Events	Jan-14												Year to Date Monthly Average		2013 Monthly Average	
	Jan-14	Feb-14	Mar-14	Apr-14	May-14	Jun-14	Jul-14	Aug-14	Sep-14	Oct-14	Nov-14	Dec-14	Quantity	%	Quantity	%
Non-Violations	73	66	53	67	61	71	71	79	93	78	88	108	76	81%	84	83%
Violations	9	19	12	17	26	17	12	21	21	18	16	21	17	19%	17	17%
<b>Total:</b>	<b>82</b>	<b>85</b>	<b>65</b>	<b>84</b>	<b>87</b>	<b>88</b>	<b>83</b>	<b>100</b>	<b>114</b>	<b>96</b>	<b>104</b>	<b>129</b>	<b>93</b>	<b>100%</b>	<b>101</b>	<b>100%</b>
<b>Violations</b>																
Uncontrollable Non-Issued	7	12	8	7	22	17	10	14	16	11	13	13	13	64%	11	62%
Controllable Non-Issued	2	7	2	2	1	0	0	0	0	5	1	5	3	16%	1	7%
Citations	0	0	2	8	3	0	2	7	5	2	2	3	4	19%	6	31%
<b>Total:</b>	<b>9</b>	<b>19</b>	<b>12</b>	<b>17</b>	<b>26</b>	<b>17</b>	<b>12</b>	<b>21</b>	<b>21</b>	<b>18</b>	<b>16</b>	<b>21</b>	<b>19</b>	<b>81%</b>	<b>18</b>	<b>69%</b>
<b>Non-Violations</b>																
Rear Axle Violation	0	0	0	0	0	0	0	0	0	0	0	0	0	0%	0	0%
Emergency Vehicle	1	0	1	0	1	0	2	3	4	0	0	0	2	3%	2	2%
Right Turn	0	0	0	0	0	0	0	0	0	0	0	0	0	0%	0	0%
No Violation Occurred	72	66	52	67	60	71	69	76	89	78	88	108	75	97%	82	98%
<b>Total:</b>	<b>73</b>	<b>66</b>	<b>53</b>	<b>67</b>	<b>61</b>	<b>71</b>	<b>71</b>	<b>79</b>	<b>93</b>	<b>78</b>	<b>88</b>	<b>108</b>	<b>77</b>	<b>100%</b>	<b>84</b>	<b>100%</b>
<b>Uncontrollable Non-Issued Violations</b>																
No Plate	3	2	2	3	1	2	2	1	2	4	3	2	2	12%	2	13%
Out of State Plate	0	0	0	1	0	0	0	0	0	0	0	0	1	6%	1	6%
Glare on Plate	0	0	0	0	2	1	0	0	0	0	0	0	2	8%	0	0%
Illegible Plate	1	3	2	2	2	0	2	1	1	0	1	1	2	9%	4	26%
Plate Obstructed	0	2	2	0	12	5	2	3	1	3	2	2	3	19%	1	9%
Windshield Glare	2	2	0	0	0	2	0	3	2	1	2	3	2	12%	2	15%
Driver Obstructed	1	1	0	0	2	1	0	1	3	0	2	2	2	9%	1	7%
Car Obstructed	0	0	0	0	0	0	0	0	0	0	0	0	0	0%	0	0%
No DMV Match Found	0	0	2	0	2	2	0	3	3	1	1	3	2	12%	1	9%
LASD Expired	0	0	0	0	0	0	0	0	0	0	0	0	0	0%	0	0%
LASD Return	0	2	0	1	1	4	4	2	4	2	2	0	2	14%	3	16%
Other	0	0	0	0	0	0	0	0	0	0	0	0	0	0%	0	0%
<b>Total:</b>	<b>7</b>	<b>12</b>	<b>8</b>	<b>7</b>	<b>22</b>	<b>17</b>	<b>10</b>	<b>14</b>	<b>16</b>	<b>11</b>	<b>13</b>	<b>13</b>	<b>18</b>	<b>100%</b>	<b>16</b>	<b>100%</b>
<b>Controllable Non-Issued Violations</b>																
Framing of Plate	0	0	0	0	0	0	0	0	0	0	0	0	0	0%	0	0%
Focus / Clarity of Plate	0	5	1	0	0	0	0	0	0	0	0	0	3	32%	0	0%
Dark Interior	1	0	0	1	1	0	0	0	0	3	0	2	2	17%	1	55%
Framing of Driver	0	0	0	0	0	0	0	0	0	0	0	0	0	0%	0	0%
Focus / Clarity of Driver	0	0	0	0	0	0	0	0	0	0	0	1	1	11%	0	0%
Framing of Car	0	0	0	0	0	0	0	0	0	0	0	0	0	0%	0	0%
Data/Operator Error	0	0	0	0	0	0	0	0	0	0	0	0	0	0%	0	0%
Exposure	1	1	0	0	0	0	0	0	0	2	0	0	1	14%	1	45%
Equipment Malfunction	0	1	1	1	0	0	0	0	0	0	0	0	1	11%	0	0%
ACS Expired	0	0	0	0	0	0	0	0	0	0	1	2	2	16%	0	0%
<b>Total:</b>	<b>2</b>	<b>7</b>	<b>2</b>	<b>2</b>	<b>1</b>	<b>0</b>	<b>0</b>	<b>0</b>	<b>0</b>	<b>5</b>	<b>1</b>	<b>5</b>	<b>9</b>	<b>100%</b>	<b>2</b>	<b>100%</b>
<b>Summary Metrics</b>																
Daily Average Vehicle Passes	661	441	603	510	667	575	789	601	732	657	821	658	Year to Date Monthly Average		2013 Monthly Average	
Average Issued Speed	0	0	16	19	17	0	17	16	20	20	21	18	643		514	
Average Issued Red Seconds	0	0	65.3	76.0	0.5	0	99.9	59.3	0.6	50.1	0.5	33.8	42.9		50.0	
Citation / Violation Issuance Rate	0%	0%	17%	47%	12%	0%	17%	33%	24%	11%	13%	14%	21%		33%	
Controllable Issuance Rate	0%	0%	50%	80%	75%	0%	100%	100%	100%	29%	67%	38%	71%		89%	



Los Angeles County MTA Expo Line  
 Approach Summary Report  
 Location 5119: WB to SB Exposition @ Denker



Events	Year to Date												2013 Monthly Average			
	Jan-14	Feb-14	Mar-14	Apr-14	May-14	Jun-14	Jul-14	Aug-14	Sep-14	Oct-14	Nov-14	Dec-14	Quantity	%	Quantity	%
Non-Violations	108	99	162	147	144	100	154	81	114	100	112	137	122	69%	141	78%
Violations	29	45	62	67	51	38	64	46	47	67	75	69	55	31%	41	22%
<b>Total:</b>	<b>137</b>	<b>144</b>	<b>224</b>	<b>214</b>	<b>195</b>	<b>138</b>	<b>218</b>	<b>127</b>	<b>161</b>	<b>167</b>	<b>187</b>	<b>206</b>	<b>177</b>	<b>100%</b>	<b>182</b>	<b>100%</b>
<b>Violations</b>																
Uncontrollable Non-Issued	14	27	40	41	35	22	30	24	31	41	44	51	33	61%	23	57%
Controllable Non-Issued	8	10	7	6	9	14	28	12	3	5	21	16	12	21%	5	12%
Citations	7	8	15	20	7	2	6	10	13	21	10	2	10	18%	13	31%
<b>Total:</b>	<b>29</b>	<b>45</b>	<b>62</b>	<b>67</b>	<b>51</b>	<b>38</b>	<b>64</b>	<b>46</b>	<b>47</b>	<b>67</b>	<b>75</b>	<b>69</b>	<b>55</b>	<b>82%</b>	<b>41</b>	<b>69%</b>
<b>Non-Violations</b>																
Rear Axle Violation	0	0	0	0	0	0	0	0	0	0	0	0	0	0%	0	0%
Emergency Vehicle	2	0	3	2	0	0	1	0	3	0	5	2	3	2%	5	4%
Right Turn	0	0	0	0	0	0	0	0	0	0	0	0	0	0%	0	0%
No Violation Occurred	106	99	159	145	144	100	153	81	111	100	107	135	120	98%	136	96%
<b>Total:</b>	<b>108</b>	<b>99</b>	<b>162</b>	<b>147</b>	<b>144</b>	<b>100</b>	<b>154</b>	<b>81</b>	<b>114</b>	<b>100</b>	<b>112</b>	<b>137</b>	<b>123</b>	<b>100%</b>	<b>141</b>	<b>100%</b>
<b>Uncontrollable Non-Issued Violations</b>																
No Plate	3	2	4	5	2	6	3	3	6	11	2	3	4	10%	4	15%
Out of State Plate	0	0	0	0	0	1	0	1	1	0	0	0	1	3%	1	4%
Glare on Plate	0	0	0	2	10	2	0	0	3	1	0	0	4	9%	0	0%
Illegible Plate	3	2	7	5	1	1	4	3	4	4	11	8	4	11%	6	20%
Plate Obstructed	1	2	0	0	5	1	2	1	1	0	5	2	2	6%	1	4%
Windshield Glare	3	0	3	0	3	2	9	4	1	1	2	1	3	7%	3	10%
Driver Obstructed	0	0	1	0	1	0	1	0	0	1	5	11	3	8%	1	5%
Car Obstructed	0	0	0	0	0	0	0	0	0	0	0	0	0	0%	0	0%
No DMV Match Found	1	8	6	9	4	2	4	2	6	8	8	7	5	14%	3	9%
LASD Expired	0	0	0	0	0	0	0	0	0	0	1	0	1	3%	0	0%
LASD Return	3	13	19	20	9	7	7	10	9	15	10	19	12	30%	9	30%
Other	0	0	0	0	0	0	0	0	0	0	0	0	0	0%	0	0%
<b>Total:</b>	<b>14</b>	<b>27</b>	<b>40</b>	<b>41</b>	<b>35</b>	<b>22</b>	<b>30</b>	<b>24</b>	<b>31</b>	<b>41</b>	<b>44</b>	<b>51</b>	<b>40</b>	<b>100%</b>	<b>28</b>	<b>100%</b>
<b>Controllable Non-Issued Violations</b>																
Framing of Plate	0	0	0	0	0	0	0	0	0	0	0	0	0	0%	0	0%
Focus / Clarity of Plate	0	2	2	2	0	0	0	0	0	0	0	0	2	7%	2	21%
Dark Interior	5	6	3	4	6	2	0	0	1	4	16	3	5	17%	4	44%
Framing of Driver	0	0	0	0	0	0	0	0	0	0	0	0	0	0%	0	0%
Focus / Clarity of Driver	0	0	1	0	3	0	0	0	0	0	0	6	3	12%	0	0%
Framing of Car	0	0	0	0	0	0	0	0	0	0	0	0	0	0%	1	10%
Data/Operator Error	0	0	0	0	0	0	0	0	0	0	0	0	0	0%	0	0%
Exposure	3	0	1	0	0	2	0	0	0	1	0	0	2	6%	2	15%
Equipment Malfunction	0	2	0	0	0	10	28	12	2	0	0	0	11	37%	1	10%
ACS Expired	0	0	0	0	0	0	0	0	0	0	5	7	6	21%	0	0%
<b>Total:</b>	<b>8</b>	<b>10</b>	<b>7</b>	<b>6</b>	<b>9</b>	<b>14</b>	<b>28</b>	<b>12</b>	<b>3</b>	<b>5</b>	<b>21</b>	<b>16</b>	<b>29</b>	<b>100%</b>	<b>10</b>	<b>100%</b>
<b>Summary Metrics</b>																
Daily Average Vehicle Passes	973	771	1,043	854	999	878	1,125	746	821	925	752	603	Year to Date Monthly Average		2013 Monthly Average	
Average Issued Speed	19	17	18	19	20	16	21	19	21	18	17	16	874		733	
Average Issued Red Seconds	7.1	13.1	5.1	5.3	0.8	0.6	0.5	10.4	6.2	14.8	0.6	1.0	5.5		11.2	
Citation / Violation Issuance Rate	24%	18%	24%	30%	14%	5%	9%	22%	28%	31%	13%	3%	18%		31%	
Controllable Issuance Rate	47%	44%	68%	77%	44%	13%	18%	45%	81%	81%	32%	11%	47%		72%	









Calls For Information

Reason for Call	Jan-14	Feb-14	Mar-14	Apr-14	May-14	Jun-14	Jul-14	Aug-14	Sep-14	Oct-14	Nov-14	Dec-14	3 Month Average	Year to Date Average	Year to Date Total	2013 Average
<i>Appointment</i>	1	0	0	1	1	1	0	0	1	2	0	1	1	1	8	2
<i>Bail</i>	2	1	1	1	2	1	2	2	1	1	0	1	1	1	15	3
<i>Complaint</i>	0	0	0	0	0	0	0	0	0	0	1	0	0	1	1	0
<i>Contest Violation</i>	4	6	3	5	7	4	5	8	6	2	4	7	4	5	61	5
<i>Courtesy Notice</i>	0	1	0	0	0	0	0	1	1	0	0	0	0	1	3	1
<i>Explain Citation</i>	0	0	0	2	3	4	1	2	0	0	2	0	1	2	14	2
<i>Explain Court</i>	0	0	0	1	0	0	0	0	0	1	0	0	0	1	2	0
<i>Explain the Project</i>	0	0	0	0	0	0	0	0	0	0	0	0	0	0	0	0
<i>Extension</i>	0	0	1	0	0	0	0	0	0	0	1	0	0	1	2	3
<i>Other</i>	0	0	0	0	0	0	0	0	0	0	1	0	0	1	1	0
<i>Affidavit of Non-Liability</i>	6	4	4	2	3	5	4	3	3	5	2	1	3	4	42	5
<i>Affidavit of Non-Liability Status</i>	1	0	0	0	0	1	0	0	0	1	0	0	0	1	3	1
<i>Traffic School</i>	0	0	1	0	0	0	2	0	1	1	0	0	1	1	5	1
<b>Total Calls</b>	14	12	10	12	16	16	14	16	13	13	11	10	12	21	157	24
<b>Appointments Scheduled</b>	1	0	1	1	0	1	1	0	0	1	1	1	1	1	8	2
<b>Affidavits of Non-Liability Processed</b>	192	277	292	389	346	285	210	315	347	348	248	234	314	290	3,483	297
<b>Court Packets Prepared</b>	25	31	29	36	26	36	30	32	26	39	35	24	33	31	369	27



**Los Angeles County MTA Expo Line  
Monthly Citation Yield - By Location  
December 2014**

Direction	Location	Code	Days of Enforcement	Events	Violations	Citations	Yield*
SB to EB	Flower @ Washintgon	5008	31	110	8	1	0.03
SB to WB	Flower @ USC Trade Tech	5018	31	85	15	3	0.10
SB to EB	Flower @ 23rd	5028	31	1,119	2	0	0.00
SB to EB	Flower @ Adams	5038	31	0	0	0	0.00
SB to EB	Flower @ 28th	5048	31	70	53	2	0.06
SB to EB	Flower @ 30th	5058	31	146	8	0	0.00
SB to EB	Flower @ Jefferson	5068	31	109	8	2	0.06
EB to NB	Exposition @ Watt	5077	31	160	3	2	0.06
WB to SB	Exposition @ Bill Robertson	5079	31	138	20	2	0.06
EB to NB	Exposition @ Vermont	5087	31	262	92	1	0.03
WB to SB	Exposition @ Vermont	5089	31	108	4	2	0.06
EB to NB	Exposition @ Raymond	5097	31	0	0	0	0.00
EB to NB	Exposition @ Normandie	5107	31	205	83	1	0.03
WB to SB	Exposition @ Normandie	5109	31	241	53	15	0.48
EB to NB	Exposition @ Halldale	5117	31	129	21	3	0.10
WB to SB	Exposition @ Denker	5119	31	206	69	2	0.06
EB to NB	Exposition @ Western	5127	31	230	136	0	0.00
WB to SB	Exposition @ Western	5129	0	207	24	3	NA
EB to SB	Exposition @ Crenshaw	5137	31	0	0	0	0.00
<b>Totals</b>			<b>29</b>	<b>3,525</b>	<b>599</b>	<b>39</b>	<b>1.33</b>

\*Yield is the number of citations issued per day of enforcement.





Disposition Type	Jan-14		Feb-14		Mar-14		Apr-14		May-14		Jun-14		Jul-14		Aug-14		Sep-14		Oct-14		Nov-14		Dec-14		3 Month Average		YTD Total		YTD Average		2013 Average	
	Count	Amount Paid	Count	Amount Paid	Count	Amount Paid	Count	Amount Paid	Count	Amount Paid	Count	Amount Paid	Count	Amount Paid	Count	Amount Paid	Count	Amount Paid	Count	Amount Paid	Count	Amount Paid	Count	Amount Paid	Count	Amount Paid	Count	Amount Paid	Count	Amount Paid	Count	Amount Paid
Bail Forfeiture	28	\$9,845	33	\$14,894	24	\$11,485	30	\$13,547	20	\$9,427	20	\$10,058	18	\$8,154	19	\$12,584	16	\$10,221	20	\$14,568	19	\$13,002	17	\$12,012	18	\$12,597	264	\$139,797	22	\$11,650	30	\$15,385
Fine Paid	9	\$4,895	11	\$5,894	8	\$5,002	14	\$7,894	10	\$5,845	13	\$6,670	8	\$5,012	11	\$5,998	7	\$4,925	16	\$6,781	14	\$5,981	15	\$7,002	12	\$5,896	136	\$71,899	11	\$5,992	16	\$7,884
Department Void	0	\$0	0	\$0	0	\$0	0	\$0	0	\$0	0	\$0	0	\$0	0	\$0	0	\$0	0	\$0	0	\$0	0	\$0	0	\$0	0	\$0	0	\$0	0	\$0
Not Guilty	48	\$0	37	\$0	55	\$0	42	\$0	47	\$0	52	\$0	46	\$0	50	\$0	42	\$0	39	\$0	50	\$0	47	\$0	44	\$0	555	\$0	46	\$0	47	\$0
Section D Void	192	\$0	277	\$0	292	\$0	389	\$0	346	\$0	285	\$0	210	\$0	315	\$0	347	\$0	348	\$0	248	\$0	234	\$0	314	\$0	3,483	\$0	290	\$0	297	\$0
Traffic School	12	\$6,458	18	\$8,954	13	\$6,899	11	\$5,915	13	\$6,112	15	\$7,787	14	\$7,002	12	\$8,021	10	\$5,284	13	\$6,998	11	\$6,021	9	\$4,984	11	\$6,101	151	\$80,435	13	\$6,703	26	\$13,019
Court Gross Total	289	\$21,198	376	\$29,742	392	\$23,386	486	\$27,356	436	\$21,384	385	\$24,515	296	\$20,168	407	\$26,603	422	\$20,430	436	\$28,347	342	\$25,004	322	\$23,998	400	\$6,101	4,589	\$292,131	382	\$24,344	416	\$36,289
MTA Gross Total*	49	\$7,079	62	\$8,971	45	\$6,511	55	\$7,934	43	\$6,224	48	\$6,950	40	\$5,799	42	\$6,076	33	\$4,777	49	\$7,084	44	\$6,358	41	\$5,918	42	\$6,108	551	\$79,680	46	\$6,640	72	\$10,501

\*Logic built on following model (assuming the new 2009 fine and fee structure):  
 MTA receives \$146.31 of \$446.00 citation where bail forfeiture and fine paid occurs  
 MTA receives \$148.05 of \$309.00 citation when traffic school option is paid for



**Los Angeles County MTA Expo Line  
Performance Report  
December 2014**

	<u>Total</u> <u>Events</u>	<u>Non</u> <u>Violations</u>	<u>Potential</u> <u>Violations</u>	<u>Percent</u> <u>Citable</u>	<u>Non Issued</u> <u>Violations</u>	<u>No DMV</u> <u>Match</u>	<u>Police/</u> <u>Client</u> <u>Rejected</u>	<u>Citations</u> <u>Issued</u>	<u>DMV</u> <u>Match</u> <u>Rate</u>	<u>Issuance</u> <u>Rate</u>	<u>Dispo</u> <u>Paid</u>	<u>Pay</u> <u>Rate</u>	<u>Closed</u> <u>No Pay</u>	<u>Pending</u>	<u>Closure</u> <u>Rate</u>	<u>Court</u> <u>Packs</u>	<u>Contest</u> <u>Rate</u>
Jan-12	3,868	3,371	497	12.85%	374	45	107	123	83.64%	24.75%	44	36%	78	1	99%	0	0.0%
Feb-12	5,540	4,868	672	12.13%	492	61	128	180	83.47%	26.79%	58	32%	62	60	67%	0	0.0%
Mar-12	5,820	5,012	808	13.88%	595	69	181	213	85.10%	26.36%	45	21%	81	87	59%	0	0.0%
Apr-12	5,626	4,943	683	12.14%	523	65	128	160	81.59%	23.43%	37	23%	13	110	31%	0	0.0%
May-12	5,982	5,290	692	11.57%	520	21	149	172	93.86%	24.86%	52	30%	43	77	55%	0	0.0%
Jun-12	4,596	4,209	387	8.42%	302	27	65	85	84.75%	21.96%	20	24%	-19	84	1%	2	0.0%
Jul-12	3,935	3,536	399	10.14%	288	21	88	111	90.45%	27.82%	23	21%	42	46	59%	6	4.9%
Aug-12	3,870	3,284	586	15.14%	394	54	86	192	83.73%	32.76%	45	23%	90	57	70%	3	1.7%
Sep-12	5,640	5,071	569	10.09%	361	12	108	208	96.34%	36.56%	52	25%	59	97	53%	2	0.9%
Oct-12	5,957	5,329	628	10.54%	433	0	157	195	100.00%	31.05%	43	22%	65	87	55%	6	3.8%
Nov-12	4,290	3,814	476	11.10%	364	0	134	112	100.00%	23.53%	26	23%	-9	95	15%	3	1.7%
Dec-12	3,484	3,199	285	8.18%	203	0	82	82	100.00%	28.77%	16	20%	13	53	35%	5	5.9%
Jan-13	4,457	4,020	437	9.80%	306	5	98	131	97.86%	29.98%	17	13%	78	36	73%	21	18.9%
Feb-13	4,868	4,322	546	11.22%	381	8	136	165	97.41%	30.22%	28	17%	83	54	67%	31	16.1%
Mar-13	6,866	6,222	644	9.38%	386	5	157	258	98.81%	40.06%	48	19%	155	55	79%	32	15.4%
Apr-13	4,882	4,280	602	12.33%	375	1	125	227	99.72%	37.71%	27	12%	122	78	66%	25	12.0%
May-13	5,893	5,223	670	11.37%	426	0	165	244	100.00%	36.42%	33	14%	132	79	68%	32	15.4%
Jun-13	7,106	6,661	445	6.26%	300	0	119	145	100.00%	32.58%	24	17%	32	89	39%	32	15.4%
Jul-13	4,165	3,646	519	12.46%	352	1	139	167	99.67%	32.18%	17	10%	99	51	69%	38	44.7%
Aug-13	4,506	3,811	695	15.42%	503	69	132	192	82.44%	27.63%	29	15%	106	57	70%	9	8.1%
Sep-13	4,844	4,231	613	12.65%	460	56	176	153	85.45%	24.96%	17	11%	53	83	46%	30	15.6%
Oct-13	5,062	4,509	553	10.92%	402	56	128	151	83.28%	27.31%	9	6%	59	83	45%	32	15.4%
Nov-13	4,445	3,941	504	11.34%	374	42	118	130	85.52%	25.79%	12	9%	21	97	25%	13	6.3%
Dec-13	4,592	4,126	466	10.15%	371	53	128	95	80.80%	20.39%	12	13%	10	73	23%	24	12.3%
Jan-14	4,307	3,911	396	9.19%	300	43	87	96	80.97%	24.24%	9	9%	13	74	23%	25	15.0%
Feb-14	4,214	3,641	573	13.60%	470	59	175	103	82.49%	17.98%	8	8%	17	78	24%	31	16.1%
Mar-14	4,786	4,147	639	13.35%	531	64	210	108	83.25%	16.90%	6	6%	6	96	11%	29	19.0%
Apr-14	3,838	3,163	675	17.59%	547	78	228	128	82.03%	18.96%	7	5%	14	107	16%	36	23.5%
May-14	3,749	3,117	632	16.86%	523	68	203	109	82.11%	17.25%	5	5%	12	92	16%	26	17.0%
Jun-14	3,126	2,656	470	15.04%	399	54	136	71	79.31%	15.11%	2	3%	12	57	20%	36	23.5%
Jul-14	3,503	3,016	487	13.90%	403	58	136	84	79.14%	17.25%	3	4%	10	71	15%	30	20.7%
Aug-14	4,072	3,335	737	18.10%	598	79	208	139	81.46%	18.86%	2	1%	38	99	29%	32	19.2%
Sep-14	3,943	3,286	657	16.66%	544	94	211	113	77.51%	17.20%	1	1%	13	99	12%	26	13.5%
Oct-14	4,086	3,454	632	15.47%	467	79	162	165	80.54%	26.11%	0	0%	52	113	32%	39	25.5%
Nov-14	3,597	2,949	648	18.02%	573	66	130	75	75.65%	11.57%	0	0%	10	65	13%	35	22.9%
Dec-14	3,525	2,926	599	16.99%	560	43	112	39	77.84%	6.51%	0	0%	4	35	10%	24	15.9%
<b>Total</b>	<b>167,040</b>	<b>146,519</b>	<b>20521</b>	<b>12.29%</b>	<b>15,400</b>	<b>1,456</b>	<b>5032</b>	<b>5,121</b>	<b>87.46%</b>	<b>24.95%</b>	<b>777</b>	<b>16.93%</b>	<b>1,669</b>	<b>2,675</b>	<b>50.74%</b>	<b>715</b>	<b>12.40%</b>

\* Pay Rate and Closure Rate percentages are based on a 4 month lag

\*\* Contested Citations take into account a 6 month lag from the violation date to the trail date.