



Expo Line Monthly Report



Metro

Los Angeles County
Metropolitan Transportation Authority

January - October 2018

CONDUENT



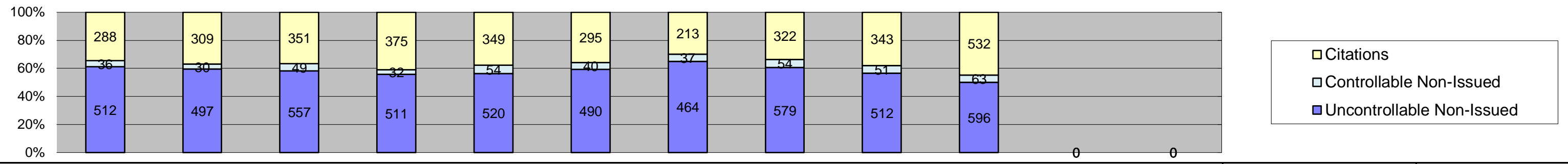
Prepared by: Conduent State and Local Solutions
Confidential

Table of Contents

Report Title	Page
<i>Approach Summary Report, All Locations.....</i>	3
<i>Approach Summary Report, Location 5008: SB to EB Flower @ Washington.....</i>	4
<i>Approach Summary Report, Location 5018: SB to WB Flower @ USC Trade Tech.....</i>	5
<i>Approach Summary Report, Location 5028: SB to EB Flower @ 23rd.....</i>	6
<i>Approach Summary Report, Location 5038: SB to EB Flower @ Adams.....</i>	7
<i>Approach Summary Report, Location 5048: SB to EB Flower @ 28th St.....</i>	8
<i>Approach Summary Report, Location 5058: Sb to EB Flower @ 30th St.....</i>	9
<i>Approach Summary Report, Location 5068: SB to EB Flower @ Jefferson.....</i>	10
<i>Approach Summary Report, Location 5077: EB to NB Exposition @ Watt.....</i>	11
<i>Approach Summary Report, Location 5079: WB to SB Exposition @ Bill Robertson.....</i>	12
<i>Approach Summary Report, Location 5087: EB to NB Exposition @ Vermont.....</i>	13
<i>Approach Summary Report, Location 5089: WB to SB Exposition @ Vermont.....</i>	14
<i>Approach Summary Report, Location 5097: EB to NB Exposition @ Raymond.....</i>	15
<i>Approach Summary Report, Location 5107: EB to NB Exposition @ Normandie.....</i>	16
<i>Approach Summary Report, Location 5109: WB to SB Exposition @ Normandie.....</i>	17
<i>Approach Summary Report, Location 5117: EB to NB Exposition @ Halldale.....</i>	18
<i>Approach Summary Report, Location 5119 WB to SB Exposition @ Denker.....</i>	19
<i>Approach Summary Report, Location 5127: EB to NB Exposition @ Western.....</i>	20
<i>Approach Summary Report, Location 5129: WB to SB Exposition @ Western.....</i>	21
<i>Approach Summary Report, Location 5137: EB to SB Exposition @ Crenshaw.....</i>	22
<i>Monthly Citation Yield Report.....</i>	23



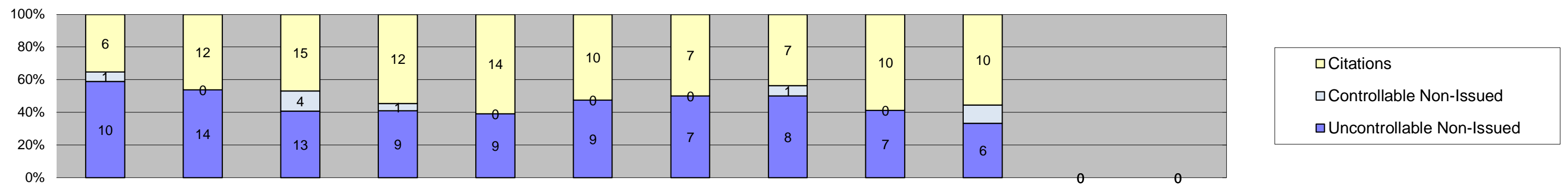
Los Angeles County MTA Expo Line
Approach Summary Report
All Locations
2018



Events	Jan-18	Feb-18	Mar-18	Apr-18	May-18	Jun-18	Jul-18	Aug-18	Sep-18	Oct-18	Nov-18	Dec-18	Year to Date Monthly Average	
													Quantity	%
Non-Violations	12,735	12,518	13,860	12,902	13,947	12,865	11,429	11,263	10,303	11,093	0	0	12,292	93%
Violations	836	836	957	918	923	825	714	955	906	1,191	0	0	906	7%
Total:	13,571	13,354	14,817	13,820	14,870	13,690	12,143	12,218	11,209	12,284	0	0	13,198	100%
Violations														
Uncontrollable Non-Issued	512	497	557	511	520	490	464	579	512	596	0	0	524	58%
Controllable Non-Issued	36	30	49	32	54	40	37	54	51	63	0	0	45	5%
Citations	288	309	351	375	349	295	213	322	343	532	0	0	338	37%
Total:	836	836	957	918	923	825	714	955	906	1,191	0	0	906	63%
Non-Violations														
Emergency Vehicle Non-Issuable	20	19	304	21	22	29	22	20	29	15	0	0	50	0%
Emergency Vehicle PD	0	0	0	0	4	3	1	2	0	0	0	0	3	0%
Intersection Control in Progress-PD	0	1	0	2	0	1	0	0	0	1	0	0	1	0%
Gate Down/ No Train	0	0	0	0	0	0	0	0	0	0	0	0	0	0%
No Violation Occurred	10,218	10,082	10,939	10,376	11,384	10,261	8,876	8,653	7,806	5,206	0	0	9,380	69%
Rear Axle Activation	108	90	89	104	64	77	79	141	158	147	0	0	106	1%
Right Turn- No Violation	0	0	0	0	0	0	0	0	0	0	0	0	0	0%
Test Shot	2,386	2,325	2,528	2,397	2,473	2,494	2,451	2,447	2,259	2,336	0	0	2,410	18%
Train Activation	0	0	0	0	0	0	0	0	51	3,388	0	0	1,720	13%
Amber Time Low	1	0	0	0	0	0	0	0	0	0	0	0	1	0%
Vehicle Stopped- PD	2	1	0	2	0	0	0	0	0	0	0	0	2	0%
Total:	12,735	12,518	13,860	12,902	13,947	12,865	11,429	11,263	10,303	11,093	0	0	13,671	100%
Uncontrollable Non-Issued Violations														
Administrative Dismissal	0	0	0	0	0	0	0	1	0	0	0	0	1	0%
Address/CDL/DOB Match Fail	0	0	0	0	1	0	0	0	0	0	0	0	1	0%
Car Obstructed	6	5	10	12	5	8	1	14	13	22	0	0	10	2%
Conditions Beyond Control	0	0	0	0	0	0	0	0	0	0	0	0	0	0%
Driver Identity Unclear	62	54	28	27	12	21	22	14	12	35	0	0	29	5%
Driver Obstructed	21	28	40	38	32	43	26	53	36	43	0	0	36	6%
Exposed	0	0	0	0	0	0	0	0	0	0	0	0	0	0%
Emergency Vehicle Issue	5	6	4	6	4	9	3	7	9	5	0	0	6	1%
Glare on Plate	146	158	133	173	174	127	115	139	149	136	0	0	145	26%
Glare on Windshield	35	20	27	40	23	65	74	71	32	40	0	0	43	8%
Illegible Plate	3	1	1	1	2	0	7	6	0	9	0	0	4	1%
Interest of Justice- PD	0	1	0	0	1	0	0	0	0	0	0	0	1	0%
Image Quality- PD	17	9	14	16	20	21	13	15	2	1	0	0	13	2%
Issuance Criteria Not Met- PD	0	0	0	0	0	0	0	0	0	14	0	0	14	3%
No Warning Sign	0	0	0	0	0	0	0	0	0	0	0	0	0	0%
No Plate	144	149	198	155	181	150	165	200	207	235	0	0	178	32%
No Speed Captured	0	0	0	0	0	0	0	0	0	0	0	0	0	0%
Obstruction In Photo- PD	32	32	22	17	27	21	16	21	11	20	0	0	22	4%
Out of State	10	10	16	5	11	10	16	18	11	14	0	0	12	2%
Plate Obstructed	31	23	32	21	27	15	6	19	17	19	0	0	21	4%
Short Yellow- PD	0	0	0	0	0	0	0	0	0	0	0	0	0	0%
Third Party Damage	0	0	0	0	0	0	0	0	0	0	0	0	0	0%
TSB Expired	0	1	0	0	0	0	0	1	12	3	0	0	4	1%
TSB No Hit	0	0	32	0	0	0	0	0	1	0	0	0	17	3%
Total:	512	497	557	511	520	490	464	579	512	596	0	0	556	100%
Controllable Non-Issued Violations														
Conduent Expire	0	0	0	0	0	0	0	0	0	0	0	0	0	0%
Clarity of Plate	0	0	0	0	2	0	0	0	0	0	0	0	2	4%
Clarity of Driver	0	0	0	0	0	0	0	0	0	0	0	0	0	0%
Dark Interior	12	8	14	13	16	11	8	9	21	36	0	0	15	27%
Data Box Related- PD	0	0	0	0	0	0	0	0	0	0	0	0	0	0%
Data Box Data Error- PD	0	0	0	0	2	1	0	0	0	0	0	0	2	3%
Data Entry Error	6	10	17	4	5	3	8	17	10	4	0	0	8	15%
Exposed	0	0	0	0	0	0	0	0	0	0	0	0	0	0%
Equipment Malfunction	5	0	3	0	2	4	1	5	2	8	0	0	4	7%
Framing- PD	0	0	0	0	0	0	0	0	0	0	0	0	0	0%
Framing of Car	6	9	7	15	19	17	18	20	16	15	0	0	14	25%
Framing of Driver	0	0	0	0	0	0	0	3	0	0	0	0	3	5%
Operator Error	0	0	0	0	0	0	0	0	0	0	0	0	0	0%
Framing of Plate	1	0	0	0	0	0	0	0	0	0	0	0	1	2%
Reject Expired	0	0	0	0	0	0	0	0	2	0	0	0	2	4%
Speed Not Determined	6	3	8	0	8	4	2	0	0	0	0	0	5	9%
Total:	36	30	49	32	54	40	37	54	51	63	0	0	56	100%
Summary Metrics														
Daily Average Vehicle Passes	0	0	0	0	0	0	0	0	0	0	0	0	0	0
Average Issued Speed	372	347	375	373	358	333	333	325	323	365	0	0	350	
Average Issued Red Seconds	729	808	851	1,195	1,373	898	1,442	501	601	610	0	0	900.7	
Citation / Violation Issuance Rate	34%	37%	37%	41%	38%	36%	30%	34%	38%	45%	0%	0%	37%	
Controllable Issuance Rate	89%	91%	88%	92%	87%	88%	85%	86%	87%	89%	0%	0%	88%	



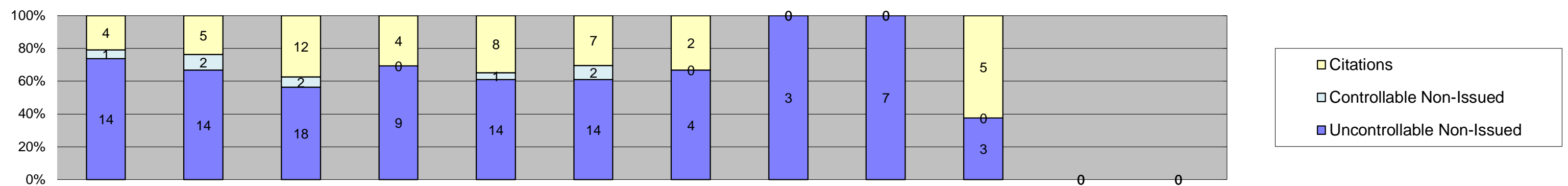
Los Angeles County MTA Expo Line
 Approach Summary Report
 Location 5008: SB to EB Flower @ Washington



Events	Jan-18	Feb-18	Mar-18	Apr-18	May-18	Jun-18	Jul-18	Aug-18	Sep-18	Oct-18	Nov-18	Dec-18	Year to Date Monthly Average	
													Quantity	%
Non-Violations	727	718	731	657	739	616	572	533	502	644			644	97%
Violations	17	26	32	22	23	19	14	16	17	18			20	3%
Total:	744	744	763	679	762	635	586	549	519	662			664	100%
Violations														
Uncontrollable Non-Issued	10	14	13	9	9	9	7	8	7	6			9	43%
Controllable Non-Issued	1	0	4	1	0	0	0	1	0	2			2	8%
Citations	6	12	15	12	14	10	7	7	10	10			10	48%
Total:	17	26	32	22	23	19	14	16	17	18			21	52%
Non-Violations														
Emergency Vehicle Non-Issuable	1	1	1	0	0	1	1	2	1	1			1	0%
Emergency Vehicle PD	0	0	0	0	0	0	0	0	0	0			0	0%
Intersection Control in Progress- PD	0	0	0	0	0	0	0	0	0	0			0	0%
Gate Down/ No Train	0	0	0	0	0	0	0	0	0	0			0	0%
No Violation Occurred	589	582	595	529	603	491	440	405	378	247			486	55%
Rear Axle Activation	8	7	8	5	7	8	11	8	10	6			8	1%
Right Turn- No Violation	0	0	0	0	0	0	0	0	0	0			0	0%
Test Shot	129	128	127	123	129	116	120	118	113	125			123	14%
Train Activation	0	0	0	0	0	0	0	0	0	265			265	30%
Amber Time Low	0	0	0	0	0	0	0	0	0	0			0	0%
Vehicle Stopped- PD	0	0	0	0	0	0	0	0	0	0			0	0%
Total:	727	718	731	657	739	616	572	533	502	644			883	100%
Uncontrollable Non-Issued Violations														
Administrative Dismissal	0	0	0	0	0	0	0	0	0	0			0	0%
Address/CDL/DOB Match Fail	0	0	0	0	0	0	0	0	0	0			0	0%
Car Obstructed	0	0	0	0	0	0	0	0	1	0			1	6%
Conditions Beyond Control	0	0	0	0	0	0	0	0	0	0			0	0%
Driver Identity Unclear	3	6	2	1	0	1	1	0	0	1			2	13%
Driver Obstructed	0	0	0	0	1	0	0	0	0	0			1	6%
Exposed	0	0	0	0	0	0	0	0	0	0			0	0%
Emergency Vehicle Issue	0	0	0	0	0	0	0	0	0	0			0	0%
Glare on Plate	1	3	0	1	0	1	0	0	0	1			1	9%
Glare on Windshield	0	0	1	2	1	1	0	0	0	0			1	8%
Illegible Plate	0	0	0	0	0	0	0	0	0	0			0	0%
Interest of Justice- PD	0	0	0	0	0	0	0	0	0	0			0	0%
Image Quality- PD	0	0	1	0	0	0	0	0	1	0			1	6%
Issuance Criteria Not Met- PD	0	0	0	0	0	0	0	0	0	0			0	0%
No Warning Sign	0	0	0	0	0	0	0	0	0	0			0	0%
No Plate	3	3	7	4	5	6	5	8	4	3			5	30%
No Speed Captured	0	0	0	0	0	0	0	0	0	0			0	0%
Obstruction In Photo- PD	1	2	0	1	1	0	0	0	0	0			1	8%
Out of State	2	0	1	0	1	0	1	0	1	1			1	7%
Plate Obstructed	0	0	1	0	0	0	0	0	0	0			1	6%
Short Yellow- PD	0	0	0	0	0	0	0	0	0	0			0	0%
Third Party Damage	0	0	0	0	0	0	0	0	0	0			0	0%
TSB Expired	0	0	0	0	0	0	0	0	0	0			0	0%
TSB No Hit	0	0	0	0	0	0	0	0	0	0			0	0%
Total:	10	14	13	9	9	9	7	8	7	6			16	100%
Controllable Non-Issued Violations														
Conduent Expire	0	0	0	0	0	0	0	0	0	0			0	0%
Clarity of Plate	0	0	0	0	0	0	0	0	0	0			0	0%
Clarity of Driver	0	0	0	0	0	0	0	0	0	0			0	0%
Dark Interior	0	0	0	1	0	0	0	0	0	1			1	29%
Data Box Related- PD	0	0	0	0	0	0	0	0	0	0			0	0%
Data Box Data Error- PD	0	0	0	0	0	0	0	0	0	0			0	0%
Data Entry Error	0	0	0	0	0	0	0	0	0	0			0	0%
Exposed	0	0	0	0	0	0	0	0	0	0			0	0%
Equipment Malfunction	1	0	3	0	0	0	0	1	0	1			2	43%
Framing- PD	0	0	0	0	0	0	0	0	0	0			0	0%
Framing of Car	0	0	0	0	0	0	0	0	0	0			0	0%
Framing of Driver	0	0	0	0	0	0	0	0	0	0			0	0%
Operator Error	0	0	0	0	0	0	0	0	0	0			0	0%
Framing of Plate	0	0	0	0	0	0	0	0	0	0			0	0%
Reject Expired	0	0	0	0	0	0	0	0	0	0			0	0%
Speed Not Determined	0	0	1	0	0	0	0	0	0	0			1	29%
Total:	1	0	4	1	0	0	0	1	0	2			4	100%
Summary Metrics														
Daily Average Vehicle Passes	0	0	0	0	0	0	0	0	0	0			0	
Average Issued Speed	24	22	25	21	23	24	22	20	24	25			23	
Average Issued Red Seconds	6.2	32.9	6.9	32.3	10.5	0.6	4.2	13.0	3.5	2.7			11.3	
Citation / Violation Issuance Rate	35%	46%	47%	55%	61%	53%	50%	44%	59%	56%			50%	
Controllable Issuance Rate	86%	100%	79%	92%	100%	100%	100%	88%	100%	83%			93%	



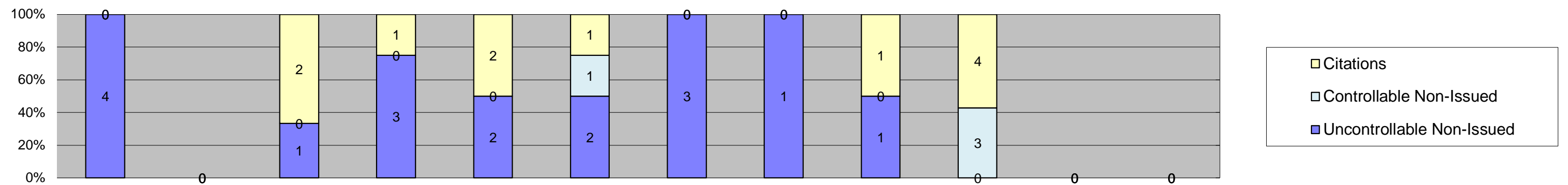
Los Angeles County MTA Expo Line
 Approach Summary Report
 Location 5018: SB to WB Flower @ USC Trade Tech



Events	Jan-18	Feb-18	Mar-18	Apr-18	May-18	Jun-18	Jul-18	Aug-18	Sep-18	Oct-18	Nov-18	Dec-18	Year to Date Monthly Average	
													Quantity	%
Non-Violations	1,920	2,136	2,559	2,206	2,576	2,520	1,755	783	786	829			1,807	99%
Violations	19	21	32	13	23	23	6	3	7	8			16	1%
Total:	1,939	2,157	2,591	2,219	2,599	2,543	1,761	786	793	837			1,823	100%
Violations														
Uncontrollable Non-Issued	14	14	18	9	14	14	4	3	7	3			10	57%
Controllable Non-Issued	1	2	2	0	1	2	0	0	0	0			2	9%
Citations	4	5	12	4	8	7	2	0	0	5			6	34%
Total:	19	21	32	13	23	23	6	3	7	8			17	66%
Non-Violations														
Emergency Vehicle Non-Issuable	0	0	0	1	0	0	0	1	0	0			1	0%
Emergency Vehicle PD	0	0	0	0	0	0	0	0	0	0			0	0%
Intersection Control in Progress-PD	0	0	0	0	0	0	0	0	0	0			0	0%
Gate Down/ No Train	0	0	0	0	0	0	0	0	0	0			0	0%
No Violation Occurred	1,768	1,991	2,398	2,050	2,420	2,341	1,591	654	671	505			1,639	82%
Rear Axle Activation	4	6	1	0	2	1	0	0	0	0			3	0%
Right Turn- No Violation	0	0	0	0	0	0	0	0	0	0			0	0%
Test Shot	148	139	160	154	154	178	164	128	115	109			145	7%
Train Activation	0	0	0	0	0	0	0	0	0	215			215	11%
Amber Time Low	0	0	0	0	0	0	0	0	0	0			0	0%
Vehicle Stopped- PD	0	0	0	1	0	0	0	0	0	0			1	0%
Total:	1,920	2,136	2,559	2,206	2,576	2,520	1,755	783	786	829			2,004	100%
Uncontrollable Non-Issued Violations														
Administrative Dismissal	0	0	0	0	0	0	0	0	0	0			0	0%
Address/CDL/DOB Match Fail	0	0	0	0	0	0	0	0	0	0			0	0%
Car Obstructed	0	0	0	0	0	0	0	0	0	0			0	0%
Conditions Beyond Control	0	0	0	0	0	0	0	0	0	0			0	0%
Driver Identity Unclear	1	2	0	0	0	2	0	0	1	0			2	8%
Driver Obstructed	3	5	1	0	1	0	0	0	3	0			3	14%
Exposed	0	0	0	0	0	0	0	0	0	0			0	0%
Emergency Vehicle Issue	0	0	0	0	0	1	0	0	0	0			1	5%
Glare on Plate	3	2	2	0	1	1	0	0	0	0			2	9%
Glare on Windshield	1	0	3	1	1	4	1	1	1	0			2	8%
Illegible Plate	0	0	0	0	0	0	0	0	0	0			0	0%
Interest of Justice- PD	0	0	0	0	0	0	0	0	0	0			0	0%
Image Quality- PD	0	0	2	2	0	1	0	0	0	0			2	9%
Issuance Criteria Not Met- PD	0	0	0	0	0	0	0	0	0	0			0	0%
No Warning Sign	0	0	0	0	0	0	0	0	0	0			0	0%
No Plate	3	3	6	5	10	5	2	1	2	3			4	21%
No Speed Captured	0	0	0	0	0	0	0	0	0	0			0	0%
Obstruction In Photo- PD	1	1	1	0	0	0	0	1	0	0			1	5%
Out of State	1	0	1	0	1	0	1	0	0	0			1	5%
Plate Obstructed	1	1	0	1	0	0	0	0	0	0			1	5%
Short Yellow- PD	0	0	0	0	0	0	0	0	0	0			0	0%
Third Party Damage	0	0	0	0	0	0	0	0	0	0			0	0%
TSB Epired	0	0	0	0	0	0	0	0	0	0			0	0%
TSB No Hit	0	0	2	0	0	0	0	0	0	0			2	10%
Total:	14	14	18	9	14	14	4	3	7	3			19	100%
Controllable Non-Issued Violations														
Cnduent Expire	0	0	0	0	0	0	0	0	0	0			0	0%
Clarity of Plate	0	0	0	0	0	0	0	0	0	0			0	0%
Clarity of Driver	0	0	0	0	0	0	0	0	0	0			0	0%
Dark Interior	0	0	0	0	0	0	0	0	0	0			0	0%
Data Box Related- PD	0	0	0	0	0	0	0	0	0	0			0	0%
Data Box Data Error- PD	0	0	0	0	0	0	0	0	0	0			0	0%
Data Entry Error	0	0	2	0	0	0	0	0	0	0			2	46%
Exposed	0	0	0	0	0	0	0	0	0	0			0	0%
Equipment Malfunction	0	0	0	0	1	1	0	0	0	0			1	23%
Framing- PD	0	0	0	0	0	0	0	0	0	0			0	0%
Framing of Car	0	0	0	0	0	0	0	0	0	0			0	0%
Framing of Driver	0	0	0	0	0	0	0	0	0	0			0	0%
Operator Error	0	0	0	0	0	0	0	0	0	0			0	0%
Framing of Plate	0	0	0	0	0	0	0	0	0	0			0	0%
Reject Expired	0	0	0	0	0	0	0	0	0	0			0	0%
Speed Not Determined	1	2	0	0	0	1	0	0	0	0			1	31%
Total:	1	2	2	0	1	2	0	0	0	0			4	100%
Summary Metrics														
Daily Average Vehicle Passes	0	0	0	0	0	0	0	0	0	0			0	
Average Issued Speed	18	16	19	20	18	18	14	17	19	16			18	
Average Issued Red Seconds	31.2	8.2	15.3	351.0	11.4	13.9	106.8	46.5	17.1	5.6			60.7	
Citation / Violation Issuance Rate	21%	24%	38%	31%	35%	30%	33%	0%	0%	63%			34%	
Controllable Issuance Rate	80%	71%	86%	100%	89%	78%	100%	0%	0%	100%			88%	



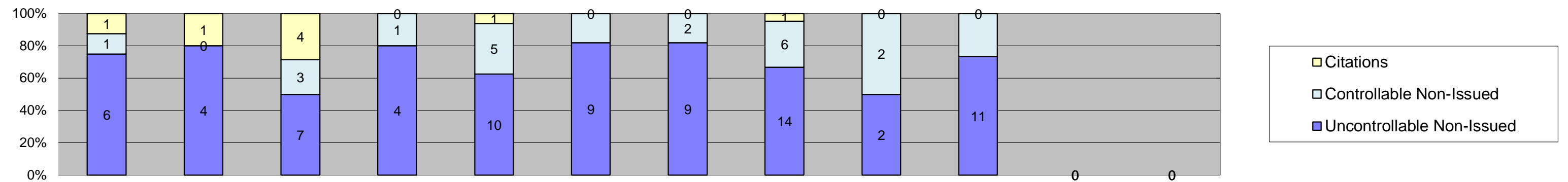
Los Angeles County MTA Expo Line
 Approach Summary Report
 Location 5028: SB to EB Flower @ 23rd



Events	Jan-18	Feb-18	Mar-18	Apr-18	May-18	Jun-18	Jul-18	Aug-18	Sep-18	Oct-18	Nov-18	Dec-18	Year to Date Monthly Average	
													Quantity	%
Non-Violations	1,056	1,081	1,167	1,156	1,114	1,199	1,086	1,207	1,231	1,210			1,151	100%
Violations	4	0	3	4	4	4	3	1	2	7			4	0%
Total:	1,060	1,081	1,170	1,160	1,118	1,203	1,089	1,208	1,233	1,217			1,154	100%
Violations														
Uncontrollable Non-Issued	4	0	1	3	2	2	3	1	1	0			2	36%
Controllable Non-Issued	0	0	0	0	0	1	0	0	0	3			2	34%
Citations	0	0	2	1	2	1	0	0	1	4			2	31%
Total:	4	0	3	4	4	4	3	1	2	7			6	69%
Non-Violations														
Emergency Vehicle Non-Issuable	1	0	0	0	0	0	0	0	1	0			1	0%
Emergency Vehicle PD	0	0	0	0	0	0	0	0	0	0			0	0%
Intersection Control in Progress- PD	0	0	0	0	0	0	0	0	0	0			0	0%
Gate Down/ No Train	0	0	0	0	0	0	0	0	0	0			0	0%
No Violation Occurred	925	955	1,040	1,027	980	1,065	956	1,074	1,098	847			997	73%
Rear Axle Activation	0	0	0	0	0	0	0	0	0	0			0	0%
Right Turn- No Violation	0	0	0	0	0	0	0	0	0	0			0	0%
Test Shot	130	126	127	129	134	134	130	133	132	121			130	9%
Train Activation	0	0	0	0	0	0	0	0	0	242			242	18%
Amber Time Low	0	0	0	0	0	0	0	0	0	0			0	0%
Vehicle Stopped- PD	0	0	0	0	0	0	0	0	0	0			0	0%
Total:	1,056	1,081	1,167	1,156	1,114	1,199	1,086	1,207	1,231	1,210			1,369	100%
Uncontrollable Non-Issued Violations														
Administrative Dismissal	0	0	0	0	0	0	0	0	0	0			0	0%
Address/CDL/DOB Match Fail	0	0	0	0	0	0	0	0	0	0			0	0%
Car Obstructed	0	0	0	0	0	0	0	0	0	0			0	0%
Conditions Beyond Control	0	0	0	0	0	0	0	0	0	0			0	0%
Driver Identity Unclear	2	0	0	1	0	0	0	0	0	0			2	22%
Driver Obstructed	0	0	0	0	0	0	0	0	0	0			0	0%
Exposed	0	0	0	0	0	0	0	0	0	0			0	0%
Emergency Vehicle Issue	1	0	0	0	0	0	0	0	0	0			1	14%
Glare on Plate	0	0	0	0	0	0	0	0	0	0			0	0%
Glare on Windshield	0	0	0	0	0	0	2	0	0	0			2	29%
Illegible Plate	0	0	0	0	0	0	0	0	0	0			0	0%
Interest of Justice- PD	0	0	0	0	0	0	0	0	0	0			0	0%
Image Quality- PD	0	0	1	0	0	0	0	0	0	0			1	14%
Issuance Criteria Not Met- PD	0	0	0	0	0	0	0	0	0	0			0	0%
No Warning Sign	0	0	0	0	0	0	0	0	0	0			0	0%
No Plate	1	0	0	2	2	2	1	1	1	0			1	21%
No Speed Captured	0	0	0	0	0	0	0	0	0	0			0	0%
Obstruction In Photo- PD	0	0	0	0	0	0	0	0	0	0			0	0%
Out of State	0	0	0	0	0	0	0	0	0	0			0	0%
Plate Obstructed	0	0	0	0	0	0	0	0	0	0			0	0%
Short Yellow- PD	0	0	0	0	0	0	0	0	0	0			0	0%
Third Party Damage	0	0	0	0	0	0	0	0	0	0			0	0%
TSB Epired	0	0	0	0	0	0	0	0	0	0			0	0%
TSB No Hit	0	0	0	0	0	0	0	0	0	0			0	0%
Total:	4	0	1	3	2	2	3	1	1	0			7	100%
Controllable Non-Issued Violations														
Conduent Expire	0	0	0	0	0	0	0	0	0	0			0	0%
Clarity of Plate	0	0	0	0	0	0	0	0	0	0			0	0%
Clarity of Driver	0	0	0	0	0	0	0	0	0	0			0	0%
Dark Interior	0	0	0	0	0	1	0	0	0	2			2	60%
Data Box Related- PD	0	0	0	0	0	0	0	0	0	0			0	0%
Data Box Data Error- PD	0	0	0	0	0	0	0	0	0	0			0	0%
Data Entry Error	0	0	0	0	0	0	0	0	0	0			0	0%
Exposed	0	0	0	0	0	0	0	0	0	0			0	0%
Equipment Malfunction	0	0	0	0	0	0	0	0	0	0			0	0%
Framing- PD	0	0	0	0	0	0	0	0	0	0			0	0%
Framing of Car	0	0	0	0	0	0	0	0	0	1			1	40%
Framing of Driver	0	0	0	0	0	0	0	0	0	0			0	0%
Operator Error	0	0	0	0	0	0	0	0	0	0			0	0%
Framing of Plate	0	0	0	0	0	0	0	0	0	0			0	0%
Reject Expired	0	0	0	0	0	0	0	0	0	0			0	0%
Speed Not Determined	0	0	0	0	0	0	0	0	0	0			0	0%
Total:	0	0	0	0	0	1	0	0	0	3			3	100%
Summary Metrics														
Daily Average Vehicle Passes	0	0	0	0	0	0	0	0	0	0			0	
Average Issued Speed	28	22	17	20	20	0	0	0	18	24			21	
Average Issued Red Seconds	200.0	61.0	520.2	61.8	89.6	0.0	0.0	0.0	67.3	19.9			145.7	
Citation / Violation Issuance Rate	0%	0%	67%	25%	50%	25%	0%	0%	50%	57%			46%	
Controllable Issuance Rate	0%	0%	100%	100%	100%	50%	0%	0%	100%	57%			85%	



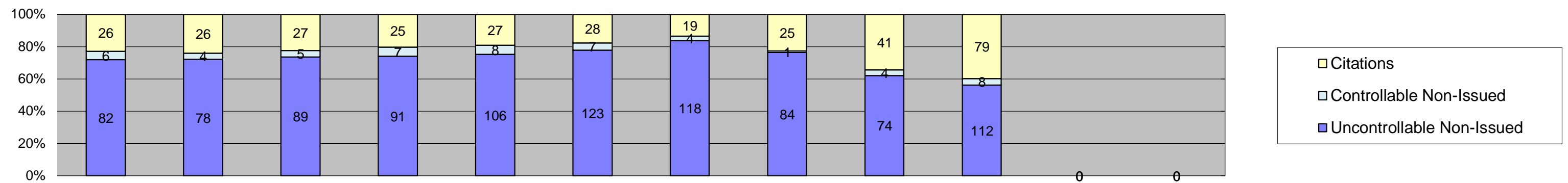
Los Angeles County MTA Expo Line
 Approach Summary Report
 Location 5038: SB to EB Flower @ Adams



Events	Jan-18	Feb-18	Mar-18	Apr-18	May-18	Jun-18	Jul-18	Aug-18	Sep-18	Oct-18	Nov-18	Dec-18	Year to Date Monthly Average	
													Quantity	%
Non-Violations	599	614	592	509	543	487	448	481	534	603			541	98%
Violations	8	5	14	5	16	11	11	21	4	15			11	2%
Total:	607	619	606	514	559	498	459	502	538	618			552	100%
Violations														
Uncontrollable Non-Issued	6	4	7	4	10	9	9	14	2	11			8	63%
Controllable Non-Issued	1	0	3	1	5	2	2	6	2	4			3	24%
Citations	1	1	4	0	1	0	0	1	0	0			2	13%
Total:	8	5	14	5	16	11	11	21	4	15			12	87%
Non-Violations														
Emergency Vehicle Non-Issuable	1	3	1	1	0	2	1	0	2	0			2	0%
Emergency Vehicle PD	0	0	0	0	0	0	0	0	0	0			0	0%
Intersection Control in Progress- PD	0	0	0	0	0	0	0	0	0	0			0	0%
Gate Down/ No Train	0	0	0	0	0	0	0	0	0	0			0	0%
No Violation Occurred	581	592	569	474	528	468	425	462	518	550			517	90%
Rear Axle Activation	6	7	5	11	2	1	2	5	7	6			5	1%
Right Turn- No Violation	0	0	0	0	0	0	0	0	0	0			0	0%
Test Shot	10	12	17	23	13	16	20	14	7	14			15	3%
Train Activation	0	0	0	0	0	0	0	0	0	33			33	6%
Amber Time Low	1	0	0	0	0	0	0	0	0	0			1	0%
Vehicle Stopped- PD	0	0	0	0	0	0	0	0	0	0			0	0%
Total:	599	614	592	509	543	487	448	481	534	603			572	100%
Uncontrollable Non-Issued Violations														
Administrative Dismissal	0	0	0	0	0	0	0	0	0	0			0	0%
Address/CDL/DOB Match Fail	0	0	0	0	0	0	0	0	0	0			0	0%
Car Obstructed	0	0	0	0	0	6	0	0	0	0			6	28%
Conditions Beyond Control	0	0	0	0	0	0	0	0	0	0			0	0%
Driver Identity Unclear	0	0	1	0	0	0	0	0	0	0			1	5%
Driver Obstructed	5	3	4	2	5	0	5	10	1	5			4	21%
Exposed	0	0	0	0	0	0	0	0	0	0			0	0%
Emergency Vehicle Issue	0	0	0	0	1	0	0	0	0	0			1	5%
Glare on Plate	0	0	0	0	0	0	1	0	0	0			1	5%
Glare on Windshield	1	0	0	0	1	0	1	1	1	0			1	5%
Illegible Plate	0	0	0	0	0	0	0	0	0	0			0	0%
Interest of Justice- PD	0	0	0	0	0	0	0	0	0	0			0	0%
Image Quality- PD	0	0	0	0	0	0	0	0	0	0			0	0%
Issuance Criteria Not Met- PD	0	0	0	0	0	0	0	0	0	3			3	14%
No Warning Sign	0	0	0	0	0	0	0	0	0	0			0	0%
No Plate	0	1	0	2	1	3	2	2	0	1			2	8%
No Speed Captured	0	0	0	0	0	0	0	0	0	0			0	0%
Obstruction In Photo- PD	0	0	1	0	0	0	0	0	0	1			1	5%
Out of State	0	0	1	0	2	0	0	1	0	1			1	6%
Plate Obstructed	0	0	0	0	0	0	0	0	0	0			0	0%
Short Yellow- PD	0	0	0	0	0	0	0	0	0	0			0	0%
Third Party Damage	0	0	0	0	0	0	0	0	0	0			0	0%
TSB Epired	0	0	0	0	0	0	0	0	0	0			0	0%
TSB No Hit	0	0	0	0	0	0	0	0	0	0			0	0%
Total:	6	4	7	4	10	9	9	14	2	11			21	100%
Controllable Non-Issued Violations														
Conduent Expire	0	0	0	0	0	0	0	0	0	0			0	0%
Clarity of Plate	0	0	0	0	0	0	0	0	0	0			0	0%
Clarity of Driver	0	0	0	0	0	0	0	0	0	0			0	0%
Dark Interior	1	0	3	0	5	2	1	3	2	4			3	61%
Data Box Related- PD	0	0	0	0	0	0	0	0	0	0			0	0%
Data Box Data Error- PD	0	0	0	0	0	0	0	0	0	0			0	0%
Data Entry Error	0	0	0	1	0	0	1	3	0	0			2	39%
Exposed	0	0	0	0	0	0	0	0	0	0			0	0%
Equipment Malfunction	0	0	0	0	0	0	0	0	0	0			0	0%
Framing- PD	0	0	0	0	0	0	0	0	0	0			0	0%
Framing of Car	0	0	0	0	0	0	0	0	0	0			0	0%
Framing of Driver	0	0	0	0	0	0	0	0	0	0			0	0%
Operator Error	0	0	0	0	0	0	0	0	0	0			0	0%
Framing of Plate	0	0	0	0	0	0	0	0	0	0			0	0%
Reject Expired	0	0	0	0	0	0	0	0	0	0			0	0%
Speed Not Determined	0	0	0	0	0	0	0	0	0	0			0	0%
Total:	1	0	3	1	5	2	2	6	2	4			4	100%
Summary Metrics														
Daily Average Vehicle Passes	0	0	0	0	0	0	0	0	0	0			0	
Average Issued Speed	17	15	16	17	18	24	16	16	0	33			19	
Average Issued Red Seconds	217.2	107.3	162.0	207.7	337.2	164.2	249.0	0.1	0.0	271.1			190.6	
Citation / Violation Issuance Rate	13%	20%	29%	0%	6%	0%	0%	5%	0%	0%			14%	
Controllable Issuance Rate	50%	100%	57%	0%	17%	0%	0%	14%	0%	0%			48%	



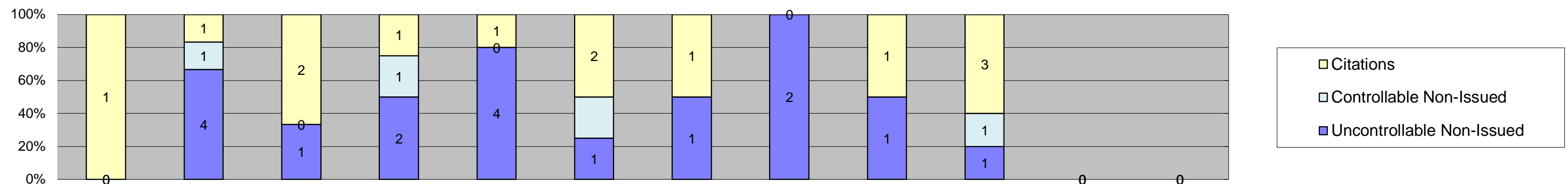
Los Angeles County MTA Expo Line
 Approach Summary Report
 Location 5048: SB to EB Flower at 28th



Events	Jan-18	Feb-18	Mar-18	Apr-18	May-18	Jun-18	Jul-18	Aug-18	Sep-18	Oct-18	Nov-18	Dec-18	Year to Date Monthly Average	
													Quantity	%
Non-Violations	158	156	151	166	154	163	151	189	163	146			160	54%
Violations	114	108	121	123	141	158	141	110	119	199			133	46%
Total:	272	264	272	289	295	321	292	299	282	345			293	100%
Violations														
Uncontrollable Non-Issued	82	78	89	91	106	123	118	84	74	112			96	72%
Controllable Non-Issued	6	4	5	7	8	7	4	1	4	8			5	4%
Citations	26	26	27	25	27	28	19	25	41	79			32	24%
Total:	114	108	121	123	141	158	141	110	119	199			133	76%
Non-Violations														
Emergency Vehicle Non-Issuable	0	2	0	2	1	0	0	1	0	0			2	1%
Emergency Vehicle PD	0	0	0	0	1	2	0	0	0	0			2	1%
Intersection Control in Progress-PD	0	1	0	1	0	1	0	0	0	0			1	1%
Gate Down/ No Train	0	0	0	0	0	0	0	0	0	0			0	0%
No Violation Occurred	17	18	17	21	21	18	15	41	31	13			21	13%
Rear Axle Activation	9	4	6	7	11	13	5	12	4	6			8	5%
Right Turn- No Violation	0	0	0	0	0	0	0	0	0	0			0	0%
Test Shot	132	131	128	134	120	129	131	135	127	124			129	78%
Train Activation	0	0	0	0	0	0	0	0	1	3			2	1%
Amber Time Low	0	0	0	0	0	0	0	0	0	0			0	0%
Vehicle Stopped- PD	0	0	0	1	0	0	0	0	0	0			1	1%
Total:	158	156	151	166	154	163	151	189	163	146			165	100%
Uncontrollable Non-Issued Violations														
Administrative Dismissal	0	0	0	0	0	0	0	0	0	0			0	0%
Address/CDL/DOB Match Fail	0	0	0	0	1	0	0	0	0	0			1	1%
Car Obstructed	0	0	0	1	0	0	0	0	0	1			1	1%
Conditions Beyond Control	0	0	0	0	0	0	0	0	0	0			0	0%
Driver Identity Unclear	20	15	11	14	5	9	10	3	2	2			9	9%
Driver Obstructed	9	10	17	18	12	22	12	16	16	25			16	15%
Exposed	0	0	0	0	0	0	0	0	0	0			0	0%
Emergency Vehicle Issue	0	0	0	0	0	1	0	0	0	0			1	1%
Glare on Plate	2	6	1	7	1	1	0	2	11	17			5	5%
Glare on Windshield	1	3	14	18	13	46	48	26	3	2			17	17%
Illegible Plate	0	0	0	0	0	0	0	0	0	0			0	0%
Interest of Justice- PD	0	0	0	0	0	0	0	0	0	0			0	0%
Image Quality- PD	2	6	6	6	11	5	8	8	0	0			7	6%
Issuance Criteria Not Met- PD	0	0	0	0	0	0	0	0	0	2			2	2%
No Warning Sign	0	0	0	0	0	0	0	0	0	0			0	0%
No Plate	29	24	28	21	38	26	28	22	34	47			30	28%
No Speed Captured	0	0	0	0	0	0	0	0	0	0			0	0%
Obstruction In Photo- PD	13	10	6	3	17	9	11	5	6	10			9	9%
Out of State	1	2	0	1	3	2	1	2	1	4			2	2%
Plate Obstructed	5	2	3	2	5	2	0	0	1	2			3	3%
Short Yellow- PD	0	0	0	0	0	0	0	0	0	0			0	0%
Third Party Damage	0	0	0	0	0	0	0	0	0	0			0	0%
TSB Epired	0	0	0	0	0	0	0	0	0	0			0	0%
TSB No Hit	0	0	3	0	0	0	0	0	0	0			3	3%
Total:	82	78	89	91	106	123	118	84	74	112			105	100%
Controllable Non-Issued Violations														
Conduent Expire	0	0	0	0	0	0	0	0	0	0			0	0%
Clarity of Plate	0	0	0	0	0	0	0	0	0	0			0	0%
Clarity of Driver	0	0	0	0	0	0	0	0	0	0			0	0%
Dark Interior	3	3	4	6	6	5	2	0	4	5			4	45%
Data Box Related- PD	0	0	0	0	0	0	0	0	0	0			0	0%
Data Box Data Error- PD	0	0	0	0	0	0	0	0	0	0			0	0%
Data Entry Error	1	0	1	1	0	1	1	1	0	1			1	11%
Exposed	0	0	0	0	0	0	0	0	0	0			0	0%
Equipment Malfunction	2	0	0	0	0	0	1	0	0	2			2	18%
Framing- PD	0	0	0	0	0	0	0	0	0	0			0	0%
Framing of Car	0	1	0	0	0	0	0	0	0	0			1	11%
Framing of Driver	0	0	0	0	0	0	0	0	0	0			0	0%
Operator Error	0	0	0	0	0	0	0	0	0	0			0	0%
Framing of Plate	0	0	0	0	0	0	0	0	0	0			0	0%
Reject Expired	0	0	0	0	0	0	0	0	0	0			0	0%
Speed Not Determined	0	0	0	0	2	1	0	0	0	0			2	16%
Total:	6	4	5	7	8	7	4	1	4	8			9	100%
Summary Metrics														
Daily Average Vehicle Passes	0	0	0	0	0	0	0	0	0	0			0	
Average Issued Speed	27	27	28	27	27	28	28	26	27	27			27	
Average Issued Red Seconds	0.4	0.5	0.5	0.4	0.9	0.5	2.9	0.5	0.6	0.5			0.8	
Citation / Violation Issuance Rate	23%	24%	22%	20%	19%	18%	13%	23%	34%	40%			24%	
Controllable Issuance Rate	81%	87%	84%	78%	77%	80%	83%	96%	91%	91%			85%	



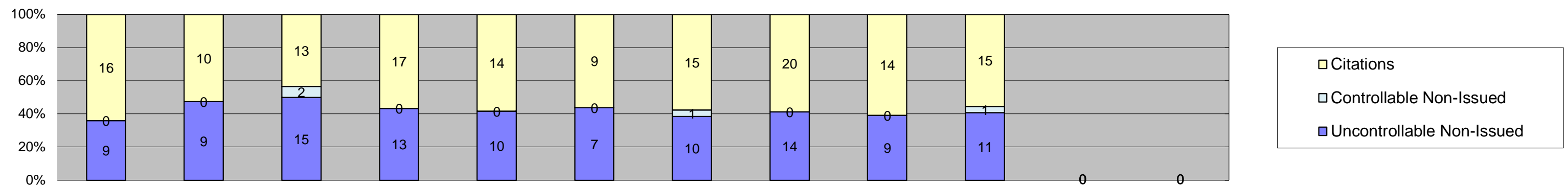
Los Angeles County MTA Expo Line
 Approach Summary Report
 Location 5058: SB to EB Flower @ 30th



Events	Jan-18	Feb-18	Mar-18	Apr-18	May-18	Jun-18	Jul-18	Aug-18	Sep-18	Oct-18	Nov-18	Dec-18	Year to Date Monthly Average	
													Quantity	%
Non-Violations	952	915	1,075	963	977	871	902	1,071	939	1,127			979	100%
Violations	1	6	3	4	5	4	2	2	2	5			3	0%
Total:	953	921	1,078	967	982	875	904	1,073	941	1,132			983	100%
Violations														
Uncontrollable Non-Issued	0	4	1	2	4	1	1	2	1	1			2	44%
Controllable Non-Issued	0	1	0	1	0	1	0	0	0	1			1	23%
Citations	1	1	2	1	1	2	1	0	1	3			1	33%
Total:	1	6	3	4	5	4	2	2	2	5			4	67%
Non-Violations														
Emergency Vehicle Non-Issuable	0	0	0	0	0	0	0	0	0	0			0	0%
Emergency Vehicle PD	0	0	0	0	0	0	0	0	0	0			0	0%
Intersection Control in Progress- PD	0	0	0	0	0	0	0	0	0	0			0	0%
Gate Down/ No Train	0	0	0	0	0	0	0	0	0	0			0	0%
No Violation Occurred	804	764	913	818	818	726	756	910	791	467			777	55%
Rear Axle Activation	2	2	1	0	1	1	0	3	0	2			2	0%
Right Turn- No Violation	0	0	0	0	0	0	0	0	0	0			0	0%
Test Shot	146	149	161	145	158	144	146	158	148	172			153	11%
Train Activation	0	0	0	0	0	0	0	0	0	486			486	34%
Amber Time Low	0	0	0	0	0	0	0	0	0	0			0	0%
Vehicle Stopped- PD	0	0	0	0	0	0	0	0	0	0			0	0%
Total:	952	915	1,075	963	977	871	902	1,071	939	1,127			1,417	100%
Uncontrollable Non-Issued Violations														
Administrative Dismissal	0	0	0	0	0	0	0	0	0	0			0	0%
Address/CDL/DOB Match Fail	0	0	0	0	0	0	0	0	0	0			0	0%
Car Obstructed	0	0	0	0	0	0	0	0	0	0			0	0%
Conditions Beyond Control	0	0	0	0	0	0	0	0	0	0			0	0%
Driver Identity Unclear	0	0	0	0	0	0	0	0	0	0			0	0%
Driver Obstructed	0	0	0	0	0	0	0	0	0	0			0	0%
Exposed	0	0	0	0	0	0	0	0	0	0			0	0%
Emergency Vehicle Issue	0	0	0	0	0	0	0	0	0	0			0	0%
Glare on Plate	0	0	0	0	0	1	0	0	0	0			1	21%
Glare on Windshield	0	0	0	0	0	0	0	0	0	0			0	0%
Illegible Plate	0	0	0	0	0	0	0	0	0	0			0	0%
Interest of Justice- PD	0	0	0	0	0	0	0	0	0	0			0	0%
Image Quality- PD	0	0	0	0	0	0	0	0	0	0			0	0%
Issuance Criteria Not Met- PD	0	0	0	0	0	0	0	0	0	0			0	0%
No Warning Sign	0	0	0	0	0	0	0	0	0	0			0	0%
No Plate	0	3	1	1	4	0	0	1	1	1			2	36%
No Speed Captured	0	0	0	0	0	0	0	0	0	0			0	0%
Obstruction In Photo- PD	0	0	0	0	0	0	0	1	0	0			1	21%
Out of State	0	1	0	1	0	0	1	0	0	0			1	21%
Plate Obstructed	0	0	0	0	0	0	0	0	0	0			0	0%
Short Yellow- PD	0	0	0	0	0	0	0	0	0	0			0	0%
Third Party Damage	0	0	0	0	0	0	0	0	0	0			0	0%
TSB Epired	0	0	0	0	0	0	0	0	0	0			0	0%
TSB No Hit	0	0	0	0	0	0	0	0	0	0			0	0%
Total:	0	4	1	2	4	1	1	2	1	1			5	100%
Controllable Non-Issued Violations														
Conduent Expire	0	0	0	0	0	0	0	0	0	0			0	0%
Clarity of Plate	0	0	0	0	0	0	0	0	0	0			0	0%
Clarity of Driver	0	0	0	0	0	0	0	0	0	0			0	0%
Dark Interior	0	1	0	0	0	0	0	0	0	0			1	25%
Data Box Related- PD	0	0	0	0	0	0	0	0	0	0			0	0%
Data Box Data Error- PD	0	0	0	0	0	0	0	0	0	0			0	0%
Data Entry Error	0	0	0	0	0	0	0	0	0	0			0	0%
Exposed	0	0	0	0	0	0	0	0	0	0			0	0%
Equipment Malfunction	0	0	0	0	0	0	0	0	0	1			1	25%
Framing- PD	0	0	0	0	0	0	0	0	0	0			0	0%
Framing of Car	0	0	0	1	0	0	0	0	0	0			1	25%
Framing of Driver	0	0	0	0	0	0	0	0	0	0			0	0%
Operator Error	0	0	0	0	0	0	0	0	0	0			0	0%
Framing of Plate	0	0	0	0	0	0	0	0	0	0			0	0%
Reject Expired	0	0	0	0	0	0	0	0	0	0			0	0%
Speed Not Determined	0	0	0	0	0	1	0	0	0	0			1	25%
Total:	0	1	0	1	0	1	0	0	0	1			4	100%
Summary Metrics														
Daily Average Vehicle Passes	0	0	0	0	0	0	0	0	0	0			0	
Average Issued Speed	16	16	17	22	18	18	23	16	14	17			18	
Average Issued Red Seconds	46.0	54.5	39.6	97.3	28.0	250.5	419.2	46.7	95.2	40.7			111.8	
Citation / Violation Issuance Rate	100%	17%	67%	25%	20%	50%	50%	0%	50%	60%			49%	
Controllable Issuance Rate	100%	50%	100%	50%	100%	67%	100%	0%	100%	75%			82%	



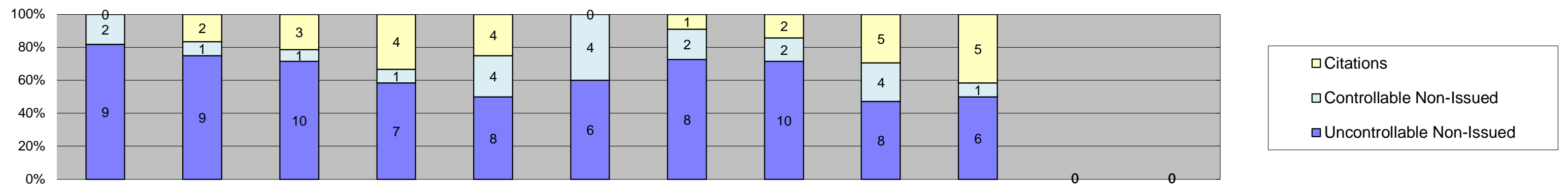
Los Angeles County MTA Expo Line
 Approach Summary Report
 Location 5068: SB to EB Flower @ Jefferson



Events	Jan-18	Feb-18	Mar-18	Apr-18	May-18	Jun-18	Jul-18	Aug-18	Sep-18	Oct-18	Nov-18	Dec-18	Year to Date Monthly Average	
													Quantity	%
Non-Violations	1,151	1,124	1,171	1,086	1,161	1,014	951	933	909	996			1,050	98%
Violations	25	19	30	30	24	16	26	34	23	27			25	2%
Total:	1,176	1,143	1,201	1,116	1,185	1,030	977	967	932	1,023			1,075	100%
Violations														
Uncontrollable Non-Issued	9	9	15	13	10	7	10	14	9	11			11	41%
Controllable Non-Issued	0	0	2	0	0	0	1	0	0	1			1	5%
Citations	16	10	13	17	14	9	15	20	14	15			14	54%
Total:	25	19	30	30	24	16	26	34	23	27			26	46%
Non-Violations														
Emergency Vehicle Non-Issuable	1	0	0	0	0	0	0	0	1	0			1	0%
Emergency Vehicle PD	0	0	0	0	0	0	0	0	0	0			0	0%
Intersection Control in Progress- PD	0	0	0	0	0	0	0	0	0	1			1	0%
Gate Down/ No Train	0	0	0	0	0	0	0	0	0	0			0	0%
No Violation Occurred	987	971	1,001	931	997	861	798	783	780	638			875	71%
Rear Axle Activation	2	1	3	3	0	0	2	4	3	5			3	0%
Right Turn- No Violation	0	0	0	0	0	0	0	0	0	0			0	0%
Test Shot	161	152	167	152	164	153	151	146	125	158			153	12%
Train Activation	0	0	0	0	0	0	0	0	0	194			194	16%
Amber Time Low	0	0	0	0	0	0	0	0	0	0			0	0%
Vehicle Stopped- PD	0	0	0	0	0	0	0	0	0	0			0	0%
Total:	1,151	1,124	1,171	1,086	1,161	1,014	951	933	909	996			1,226	100%
Uncontrollable Non-Issued Violations														
Administrative Dismissal	0	0	0	0	0	0	0	0	0	0			0	0%
Address/CDL/DOB Match Fail	0	0	0	0	0	0	0	0	0	0			0	0%
Car Obstructed	0	0	0	1	0	0	0	0	0	1			1	4%
Conditions Beyond Control	0	0	0	0	0	0	0	0	0	0			0	0%
Driver Identity Unclear	1	1	0	0	0	0	1	0	0	0			1	4%
Driver Obstructed	0	0	1	1	1	0	2	4	0	0			2	8%
Exposed	0	0	0	0	0	0	0	0	0	0			0	0%
Emergency Vehicle Issue	0	0	0	0	0	0	0	1	0	0			1	4%
Glare on Plate	0	1	2	2	1	1	2	0	0	0			2	6%
Glare on Windshield	0	0	0	0	0	1	0	2	0	1			1	6%
Illegible Plate	0	0	0	0	0	0	0	0	0	0			0	0%
Interest of Justice- PD	0	0	0	0	1	0	0	0	0	0			1	4%
Image Quality- PD	0	0	1	0	0	0	0	0	0	0			1	4%
Issuance Criteria Not Met- PD	0	0	0	0	0	0	0	0	0	2			2	8%
No Warning Sign	0	0	0	0	0	0	0	0	0	0			0	0%
No Plate	4	6	6	7	4	3	4	4	9	5			5	22%
No Speed Captured	0	0	0	0	0	0	0	0	0	0			0	0%
Obstruction In Photo- PD	1	0	1	0	2	1	0	1	0	0			1	5%
Out of State	1	1	1	2	1	1	1	1	0	0			1	5%
Plate Obstructed	2	0	0	0	0	0	0	1	0	2			2	7%
Short Yellow- PD	0	0	0	0	0	0	0	0	0	0			0	0%
Third Party Damage	0	0	0	0	0	0	0	0	0	0			0	0%
TSB Epired	0	0	0	0	0	0	0	0	0	0			0	0%
TSB No Hit	0	0	3	0	0	0	0	0	0	0			3	13%
Total:	9	9	15	13	10	7	10	14	9	11			24	100%
Controllable Non-Issued Violations														
Conduent Expire	0	0	0	0	0	0	0	0	0	0			0	0%
Clarity of Plate	0	0	0	0	0	0	0	0	0	0			0	0%
Clarity of Driver	0	0	0	0	0	0	0	0	0	0			0	0%
Dark Interior	0	0	0	0	0	0	0	0	0	0			0	0%
Data Box Related- PD	0	0	0	0	0	0	0	0	0	0			0	0%
Data Box Data Error- PD	0	0	0	0	0	0	0	0	0	0			0	0%
Data Entry Error	0	0	2	0	0	0	1	0	0	1			1	100%
Exposed	0	0	0	0	0	0	0	0	0	0			0	0%
Equipment Malfunction	0	0	0	0	0	0	0	0	0	0			0	0%
Framing- PD	0	0	0	0	0	0	0	0	0	0			0	0%
Framing of Car	0	0	0	0	0	0	0	0	0	0			0	0%
Framing of Driver	0	0	0	0	0	0	0	0	0	0			0	0%
Operator Error	0	0	0	0	0	0	0	0	0	0			0	0%
Framing of Plate	0	0	0	0	0	0	0	0	0	0			0	0%
Reject Expired	0	0	0	0	0	0	0	0	0	0			0	0%
Speed Not Determined	0	0	0	0	0	0	0	0	0	0			0	0%
Total:	0	0	2	0	0	0	1	0	0	1			1	100%
Summary Metrics														
Daily Average Vehicle Passes	0	0	0	0	0	0	0	0	0	0			0	
Average Issued Speed	19	19	19	18	20	19	17	18	18	19			19	
Average Issued Red Seconds	0.4	8.1	0.5	3.2	28.0	0.6	0.5	31.9	55.8	23.6			15.3	
Citation / Violation Issuance Rate	64%	53%	43%	57%	58%	56%	58%	59%	61%	56%			56%	
Controllable Issuance Rate	100%	100%	87%	100%	100%	100%	94%	100%	100%	94%			97%	



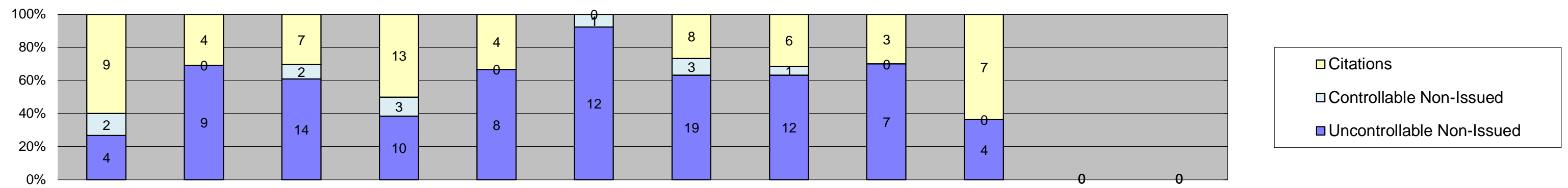
Los Angeles County MTA Expo Line
Approach Summary Report
Location 5077: EB to NB Exposition @ Watt



Events	Jan-18	Feb-18	Mar-18	Apr-18	May-18	Jun-18	Jul-18	Aug-18	Sep-18	Oct-18	Nov-18	Dec-18	Year to Date Monthly Average	
													Quantity	%
Non-Violations	219	257	327	261	252	211	217	226	206	252			243	95%
Violations	11	12	14	12	16	10	11	14	17	12			13	5%
Total:	230	269	341	273	268	221	228	240	223	264			256	100%
Violations														
Uncontrollable Non-Issued	9	9	10	7	8	6	8	10	8	6			8	60%
Controllable Non-Issued	2	1	1	1	4	4	2	2	4	1			2	16%
Citations	0	2	3	4	4	0	1	2	5	5			3	24%
Total:	11	12	14	12	16	10	11	14	17	12			14	76%
Non-Violations														
Emergency Vehicle Non-Issuable	1	1	2	2	3	1	3	2	4	2			2	1%
Emergency Vehicle PD	0	0	0	0	0	0	0	0	0	0			0	0%
Intersection Control in Progress-PD	0	0	0	0	0	0	0	0	0	0			0	0%
Gate Down/ No Train	0	0	0	0	0	0	0	0	0	0			0	0%
No Violation Occurred	98	127	125	127	112	90	97	105	96	87			106	38%
Rear Axle Activation	0	0	1	1	1	0	1	0	1	0			1	0%
Right Turn- No Violation	0	0	0	0	0	0	0	0	0	0			0	0%
Test Shot	120	129	199	131	136	120	116	119	105	122			130	46%
Train Activation	0	0	0	0	0	0	0	0	0	41			41	15%
Amber Time Low	0	0	0	0	0	0	0	0	0	0			0	0%
Vehicle Stopped- PD	0	0	0	0	0	0	0	0	0	0			0	0%
Total:	219	257	327	261	252	211	217	226	206	252			280	100%
Uncontrollable Non-Issued Violations														
Administrative Dismissal	0	0	0	0	0	0	0	0	0	0			0	0%
Address/CDL/DOB Match Fail	0	0	0	0	0	0	0	0	0	0			0	0%
Car Obstructed	0	0	0	0	0	0	0	1	0	1			1	7%
Conditions Beyond Control	0	0	0	0	0	0	0	0	0	0			0	0%
Driver Identity Unclear	0	1	1	0	0	0	0	0	0	1			1	7%
Driver Obstructed	1	0	0	2	0	2	1	2	1	0			2	10%
Exposed	0	0	0	0	0	0	0	0	0	0			0	0%
Emergency Vehicle Issue	0	0	0	0	1	0	0	0	0	0			1	7%
Glare on Plate	2	6	5	3	4	3	1	4	4	0			4	24%
Glare on Windshield	0	1	0	0	0	0	2	1	1	0			1	8%
Illegible Plate	1	0	0	0	0	0	0	0	0	0			1	7%
Interest of Justice- PD	0	0	0	0	0	0	0	0	0	0			0	0%
Image Quality- PD	1	1	0	0	0	0	0	0	0	0			1	7%
Issuance Criteria Not Met- PD	0	0	0	0	0	0	0	0	0	0			0	0%
No Warning Sign	0	0	0	0	0	0	0	0	0	0			0	0%
No Plate	4	0	3	1	3	1	4	2	2	3			3	17%
No Speed Captured	0	0	0	0	0	0	0	0	0	0			0	0%
Obstruction In Photo- PD	0	0	0	0	0	0	0	0	0	0			0	0%
Out of State	0	0	0	0	0	0	0	0	0	0			0	0%
Plate Obstructed	0	0	1	1	0	0	0	0	0	1			1	7%
Short Yellow- PD	0	0	0	0	0	0	0	0	0	0			0	0%
Third Party Damage	0	0	0	0	0	0	0	0	0	0			0	0%
TSB Epired	0	0	0	0	0	0	0	0	0	0			0	0%
TSB No Hit	0	0	0	0	0	0	0	0	0	0			0	0%
Total:	9	9	10	7	8	6	8	10	8	6			15	100%
Controllable Non-Issued Violations														
Conduent Expire	0	0	0	0	0	0	0	0	0	0			0	0%
Clarity of Plate	0	0	0	0	0	0	0	0	0	0			0	0%
Clarity of Driver	0	0	0	0	0	0	0	0	0	0			0	0%
Dark Interior	0	0	1	1	1	1	0	0	3	1			1	22%
Data Box Related- PD	0	0	0	0	0	0	0	0	0	0			0	0%
Data Box Data Error- PD	0	0	0	0	0	0	0	0	0	0			0	0%
Data Entry Error	1	0	0	0	0	0	0	0	0	0			1	17%
Exposed	0	0	0	0	0	0	0	0	0	0			0	0%
Equipment Malfunction	0	0	0	0	1	0	0	0	1	0			1	17%
Framing- PD	0	0	0	0	0	0	0	0	0	0			0	0%
Framing of Car	1	1	0	0	1	3	2	2	0	0			2	28%
Framing of Driver	0	0	0	0	0	0	0	0	0	0			0	0%
Operator Error	0	0	0	0	0	0	0	0	0	0			0	0%
Framing of Plate	0	0	0	0	0	0	0	0	0	0			0	0%
Reject Expired	0	0	0	0	0	0	0	0	0	0			0	0%
Speed Not Determined	0	0	0	0	1	0	0	0	0	0			1	17%
Total:	2	1	1	1	4	4	2	2	4	1			6	100%
Summary Metrics														
Daily Average Vehicle Passes	0	0	0	0	0	0	0	0	0	0			0	
Average Issued Speed	19	20	17	17	17	16	17	17	21	21			18	
Average Issued Red Seconds	42.5	0.5	54.8	24.8	67.6	231.4	80.6	33.6	7.0	94.7			63.8	
Citation / Violation Issuance Rate	0%	17%	21%	33%	25%	0%	9%	14%	29%	42%			24%	
Controllable Issuance Rate	0%	67%	75%	80%	50%	0%	33%	50%	56%	83%			62%	



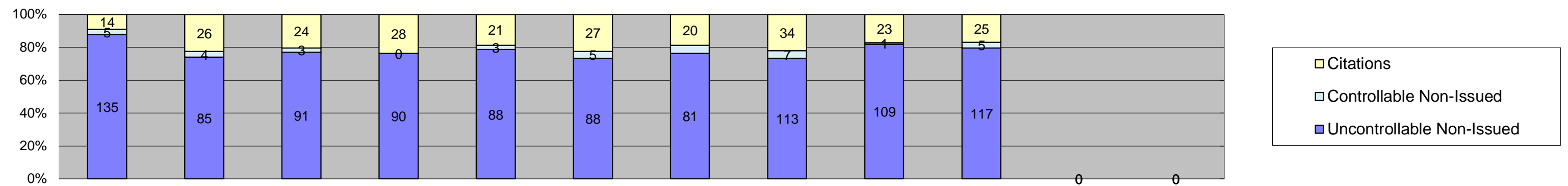
Los Angeles County MTA Expo Line
 Approach Summary Report
 Location 5079: WB to SB Exposition @ Bill Robertson



Events	Jan-18	Feb-18	Mar-18	Apr-18	May-18	Jun-18	Jul-18	Aug-18	Sep-18	Oct-18	Nov-18	Dec-18	Year to Date Monthly Average	
													Quantity	%
Non-Violations	288	266	276	315	281	312	374	305	310	329			306	95%
Violations	15	13	23	26	12	13	30	19	10	11			17	5%
Total:	303	279	299	341	293	325	404	324	320	340			323	100%
Violations														
Uncontrollable Non-Issued	4	9	14	10	8	12	19	12	7	4			10	53%
Controllable Non-Issued	2	0	2	3	0	1	3	1	0	0			2	11%
Citations	9	4	7	13	4	0	8	6	3	7			7	36%
Total:	15	13	23	26	12	13	30	19	10	11			19	64%
Non-Violations														
Emergency Vehicle Non-Issuable	1	1	1	3	0	2	0	0	1	1			1	0%
Emergency Vehicle PD	0	0	0	0	0	0	0	0	0	0			0	0%
Intersection Control in Progress- PD	0	0	0	0	0	0	0	0	0	0			0	0%
Gate Down/ No Train	0	0	0	0	0	0	0	0	0	0			0	0%
No Violation Occurred	95	64	76	91	75	70	56	47	78	66			72	22%
Rear Axle Activation	1	3	5	1	0	1	1	0	0	0			2	1%
Right Turn- No Violation	0	0	0	0	0	0	0	0	0	0			0	0%
Test Shot	191	198	194	220	206	239	317	258	231	234			229	69%
Train Activation	0	0	0	0	0	0	0	0	0	28			28	8%
Amber Time Low	0	0	0	0	0	0	0	0	0	0			0	0%
Vehicle Stopped- PD	0	0	0	0	0	0	0	0	0	0			0	0%
Total:	288	266	276	315	281	312	374	305	310	329			332	100%
Uncontrollable Non-Issued Violations														
Administrative Dismissal	0	0	0	0	0	0	0	0	0	0			0	0%
Address/CDL/DOB Match Fail	0	0	0	0	0	0	0	0	0	0			0	0%
Car Obstructed	0	0	1	0	0	0	1	0	0	0			1	5%
Conditions Beyond Control	0	0	0	0	0	0	0	0	0	0			0	0%
Driver Identity Unclear	0	0	0	0	0	0	0	0	0	0			0	0%
Driver Obstructed	0	2	2	0	2	2	0	1	0	0			2	10%
Exposed	0	0	0	0	0	0	0	0	0	0			0	0%
Emergency Vehicle Issue	0	0	0	0	0	0	1	0	0	0			1	5%
Glare on Plate	0	3	1	5	4	2	9	5	5	1			4	21%
Glare on Windshield	0	0	0	0	0	0	1	0	0	0			1	5%
Illegible Plate	0	0	0	0	0	0	0	0	0	0			0	0%
Interest of Justice- PD	0	0	0	0	0	0	0	0	0	0			0	0%
Image Quality- PD	0	0	0	0	0	1	0	0	0	0			1	5%
Issuance Criteria Not Met- PD	0	0	0	0	0	0	0	0	0	0			0	0%
No Warning Sign	0	0	0	0	0	0	0	0	0	0			0	0%
No Plate	1	2	4	3	2	3	6	4	2	3			3	16%
No Speed Captured	0	0	0	0	0	0	0	0	0	0			0	0%
Obstruction In Photo- PD	0	0	2	1	0	1	1	1	0	0			1	7%
Out of State	0	0	0	0	0	0	0	1	0	0			1	5%
Plate Obstructed	3	2	3	1	0	3	0	0	0	0			2	13%
Short Yellow- PD	0	0	0	0	0	0	0	0	0	0			0	0%
Third Party Damage	0	0	0	0	0	0	0	0	0	0			0	0%
TSB Epired	0	0	0	0	0	0	0	0	0	0			0	0%
TSB No Hit	0	0	1	0	0	0	0	0	0	0			1	5%
Total:	4	9	14	10	8	12	19	12	7	4			18	100%
Controllable Non-Issued Violations														
Cnduent Expire	0	0	0	0	0	0	0	0	0	0			0	0%
Clarity of Plate	0	0	0	0	0	0	0	0	0	0			0	0%
Clarity of Driver	0	0	0	0	0	0	0	0	0	0			0	0%
Dark Interior	0	0	0	0	0	0	0	0	0	0			0	0%
Data Box Related- PD	0	0	0	0	0	0	0	0	0	0			0	0%
Data Box Data Error- PD	0	0	0	0	0	0	0	0	0	0			0	0%
Data Entry Error	0	0	0	0	0	0	0	0	0	0			0	0%
Exposed	0	0	0	0	0	0	0	0	0	0			0	0%
Equipment Malfunction	0	0	0	0	0	0	0	0	0	0			0	0%
Framing- PD	0	0	0	0	0	0	0	0	0	0			0	0%
Framing of Car	1	0	0	3	0	1	3	1	0	0			2	55%
Framing of Driver	0	0	0	0	0	0	0	0	0	0			0	0%
Operator Error	0	0	0	0	0	0	0	0	0	0			0	0%
Framing of Plate	0	0	0	0	0	0	0	0	0	0			0	0%
Reject Expired	0	0	0	0	0	0	0	0	0	0			0	0%
Speed Not Determined	1	0	2	0	0	0	0	0	0	0			2	45%
Total:	2	0	2	3	0	1	3	1	0	0			3	100%
Summary Metrics														
Daily Average Vehicle Passes	0	0	0	0	0	0	0	0	0	0			0	
Average Issued Speed	17	15	16	16	15	16	16	14	16	17			16	
Average Issued Red Seconds	20.0	0.4	0.8	0.6	329.8	0.3	20.5	5.6	34.1	0.3			41.2	
Citation / Violation Issuance Rate	60%	31%	30%	50%	33%	0%	27%	32%	30%	64%			40%	
Controllable Issuance Rate	82%	100%	78%	81%	100%	0%	73%	86%	100%	100%			89%	



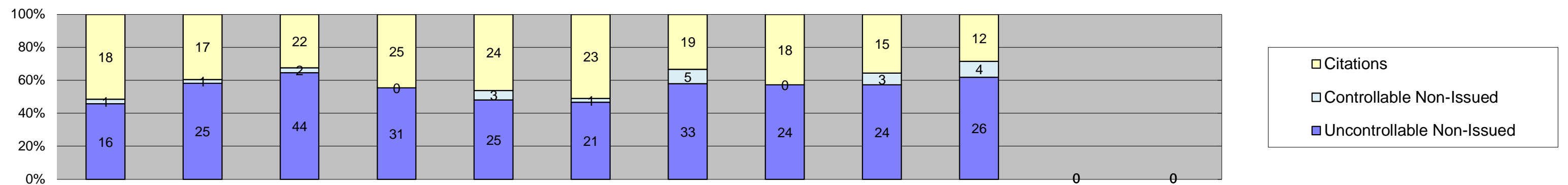
Los Angeles County MTA Expo Line
Approach Summary Report
Location 5087: EB to NB Exposition @ Vermont



Events	Jan-18	Feb-18	Mar-18	Apr-18	May-18	Jun-18	Jul-18	Aug-18	Sep-18	Oct-18	Nov-18	Dec-18	Year to Date Monthly Average	
													Quantity	%
Non-Violations	831	865	913	932	900	927	968	1,063	846	946			919	88%
Violations	154	115	118	118	112	120	106	154	133	147			128	12%
Total:	985	980	1,031	1,050	1,012	1,047	1,074	1,217	979	1,093			1,047	100%
Violations														
Uncontrollable Non-Issued	135	85	91	90	88	88	81	113	109	117			100	78%
Controllable Non-Issued	5	4	3	0	3	5	5	7	1	5			4	3%
Citations	14	26	24	28	21	27	20	34	23	25			24	19%
Total:	154	115	118	118	112	120	106	154	133	147			128	81%
Non-Violations														
Emergency Vehicle Non-Issuable	2	0	4	2	2	4	0	3	1	1			2	0%
Emergency Vehicle PD	0	0	0	0	0	0	0	1	0	0			1	0%
Intersection Control in Progress-PD	0	0	0	0	0	0	0	0	0	0			0	0%
Gate Down/ No Train	0	0	0	0	0	0	0	0	0	0			0	0%
No Violation Occurred	688	703	751	768	749	755	791	893	690	329			712	54%
Rear Axle Activation	3	10	8	13	4	4	5	15	15	18			10	1%
Right Turn- No Violation	0	0	0	0	0	0	0	0	0	0			0	0%
Test Shot	138	152	150	149	145	164	172	151	140	148			151	11%
Train Activation	0	0	0	0	0	0	0	0	0	450			450	34%
Amber Time Low	0	0	0	0	0	0	0	0	0	0			0	0%
Vehicle Stopped- PD	0	0	0	0	0	0	0	0	0	0			0	0%
Total:	831	865	913	932	900	927	968	1,063	846	946			1,325	100%
Uncontrollable Non-Issued Violations														
Administrative Dismissal	0	0	0	0	0	0	0	0	0	0			0	0%
Address/CDL/DOB Match Fail	0	0	0	0	0	0	0	0	0	0			0	0%
Car Obstructed	2	0	1	2	0	0	0	0	0	1			2	1%
Conditions Beyond Control	0	0	0	0	0	0	0	0	0	0			0	0%
Driver Identity Unclear	18	4	3	5	3	6	4	5	3	10			6	6%
Driver Obstructed	0	0	5	3	4	3	1	4	2	3			3	3%
Exposed	0	0	0	0	0	0	0	0	0	0			0	0%
Emergency Vehicle Issue	0	1	0	0	0	2	1	0	1	0			1	1%
Glare on Plate	46	48	43	51	54	40	35	50	53	46			47	43%
Glare on Windshield	30	12	7	14	5	9	12	25	19	32			17	15%
Illegible Plate	0	0	1	0	0	0	2	0	0	1			1	1%
Interest of Justice- PD	0	0	0	0	0	0	0	0	0	0			0	0%
Image Quality- PD	10	2	1	3	3	6	2	3	0	0			4	3%
Issuance Criteria Not Met- PD	0	0	0	0	0	0	0	0	0	0			0	0%
No Warning Sign	0	0	0	0	0	0	0	0	0	0			0	0%
No Plate	22	15	25	12	15	18	20	23	29	24			20	19%
No Speed Captured	0	0	0	0	0	0	0	0	0	0			0	0%
Obstruction In Photo- PD	3	0	0	0	0	2	1	2	1	0			2	2%
Out of State	2	0	2	0	0	2	1	1	1	0			2	1%
Plate Obstructed	2	3	2	0	4	0	2	0	0	0			3	2%
Short Yellow- PD	0	0	0	0	0	0	0	0	0	0			0	0%
Third Party Damage	0	0	0	0	0	0	0	0	0	0			0	0%
TSB Epired	0	0	0	0	0	0	0	0	0	0			0	0%
TSB No Hit	0	0	1	0	0	0	0	0	0	0			1	1%
Total:	135	85	91	90	88	88	81	113	109	117			107	100%
Controllable Non-Issued Violations														
Cnduent Expire	0	0	0	0	0	0	0	0	0	0			0	0%
Clarity of Plate	0	0	0	0	0	0	0	0	0	0			0	0%
Clarity of Driver	0	0	0	0	0	0	0	0	0	0			0	0%
Dark Interior	1	0	0	0	0	1	1	3	0	5			2	26%
Data Box Related- PD	0	0	0	0	0	0	0	0	0	0			0	0%
Data Box Data Error- PD	0	0	0	0	0	1	0	0	0	0			1	12%
Data Entry Error	0	2	2	0	0	2	3	2	0	0			2	26%
Exposed	0	0	0	0	0	0	0	0	0	0			0	0%
Equipment Malfunction	0	0	0	0	0	0	0	0	0	0			0	0%
Framing- PD	0	0	0	0	0	0	0	0	0	0			0	0%
Framing of Car	2	2	1	0	2	1	0	2	1	0			2	19%
Framing of Driver	0	0	0	0	0	0	0	0	0	0			0	0%
Operator Error	0	0	0	0	0	0	0	0	0	0			0	0%
Framing of Plate	0	0	0	0	0	0	0	0	0	0			0	0%
Reject Expired	0	0	0	0	0	0	0	0	0	0			0	0%
Speed Not Determined	2	0	0	0	1	0	1	0	0	0			1	16%
Total:	5	4	3	0	3	5	5	7	1	5			8	100%
Summary Metrics														
Daily Average Vehicle Passes	0	0	0	0	0	0	0	0	0	0			0	
Average Issued Speed	19	20	20	20	20	20	20	20	20	20			20	
Average Issued Red Seconds	0.9	0.5	0.4	0.5	0.5	0.6	1.1	1.1	0.8	0.5			0.7	
Citation / Violation Issuance Rate	9%	23%	20%	24%	19%	23%	19%	22%	17%	17%			19%	
Controllable Issuance Rate	74%	87%	89%	100%	88%	84%	80%	83%	96%	83%			86%	



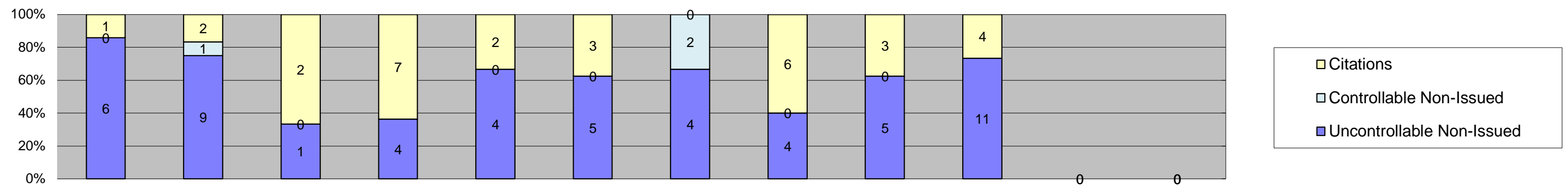
Los Angeles County MTA Expo Line
 Approach Summary Report
 Location 5089: WB to SB Exposition @ Vermont



Events	Jan-18	Feb-18	Mar-18	Apr-18	May-18	Jun-18	Jul-18	Aug-18	Sep-18	Oct-18	Nov-18	Dec-18	Year to Date Monthly Average	
													Quantity	%
Non-Violations	585	558	629	657	697	729	662	702	681	705			661	93%
Violations	35	43	68	56	52	45	57	42	42	42			48	7%
Total:	620	601	697	713	749	774	719	744	723	747			709	100%
Violations														
Uncontrollable Non-Issued	16	25	44	31	25	21	33	24	24	26			27	55%
Controllable Non-Issued	1	1	2	0	3	1	5	0	3	4			3	5%
Citations	18	17	22	25	24	23	19	18	15	12			19	40%
Total:	35	43	68	56	52	45	57	42	42	42			49	60%
Non-Violations														
Emergency Vehicle Non-Issuable	0	4	1	1	2	3	2	0	1	0			2	0%
Emergency Vehicle PD	0	0	0	0	0	0	0	0	0	0			0	0%
Intersection Control in Progress- PD	0	0	0	0	0	0	0	0	0	0			0	0%
Gate Down/ No Train	0	0	0	0	0	0	0	0	0	0			0	0%
No Violation Occurred	461	433	505	523	560	587	521	578	545	57			477	42%
Rear Axle Activation	6	4	5	3	1	2	10	5	16	12			6	1%
Right Turn- No Violation	0	0	0	0	0	0	0	0	0	0			0	0%
Test Shot	118	117	118	130	134	137	129	119	119	122			124	11%
Train Activation	0	0	0	0	0	0	0	0	0	514			514	46%
Amber Time Low	0	0	0	0	0	0	0	0	0	0			0	0%
Vehicle Stopped- PD	0	0	0	0	0	0	0	0	0	0			0	0%
Total:	585	558	629	657	697	729	662	702	681	705			1,124	100%
Uncontrollable Non-Issued Violations														
Administrative Dismissal	0	0	0	0	0	0	0	0	0	0			0	0%
Address/CDL/DOB Match Fail	0	0	0	0	0	0	0	0	0	0			0	0%
Car Obstructed	0	0	0	0	0	0	0	2	1	2			2	5%
Conditions Beyond Control	0	0	0	0	0	0	0	0	0	0			0	0%
Driver Identity Unclear	3	4	3	4	2	2	1	2	0	2			3	7%
Driver Obstructed	1	2	3	3	1	4	0	1	2	1			2	6%
Exposed	0	0	0	0	0	0	0	0	0	0			0	0%
Emergency Vehicle Issue	1	0	1	2	0	0	0	0	0	0			1	4%
Glare on Plate	3	7	9	7	9	4	8	5	10	10			7	21%
Glare on Windshield	0	0	0	1	1	1	2	1	1	0			1	3%
Illegible Plate	0	0	0	0	1	0	0	1	0	0			1	3%
Interest of Justice- PD	0	0	0	0	0	0	0	0	0	0			0	0%
Image Quality- PD	0	0	1	1	3	3	2	0	1	0			2	5%
Issuance Criteria Not Met- PD	0	0	0	0	0	0	0	0	0	0			0	0%
No Warning Sign	0	0	0	0	0	0	0	0	0	0			0	0%
No Plate	7	6	17	9	7	5	17	10	8	10			10	27%
No Speed Captured	0	0	0	0	0	0	0	0	0	0			0	0%
Obstruction In Photo- PD	1	3	2	2	0	1	1	0	0	1			2	4%
Out of State	0	1	1	0	0	0	0	0	0	0			1	3%
Plate Obstructed	0	2	5	2	1	1	2	2	1	0			2	6%
Short Yellow- PD	0	0	0	0	0	0	0	0	0	0			0	0%
Third Party Damage	0	0	0	0	0	0	0	0	0	0			0	0%
TSB Epired	0	0	0	0	0	0	0	0	0	0			0	0%
TSB No Hit	0	0	2	0	0	0	0	0	0	0			2	6%
Total:	16	25	44	31	25	21	33	24	24	26			35	100%
Controllable Non-Issued Violations														
Conduent Expire	0	0	0	0	0	0	0	0	0	0			0	0%
Clarity of Plate	0	0	0	0	1	0	0	0	0	0			1	14%
Clarity of Driver	0	0	0	0	0	0	0	0	0	0			0	0%
Dark Interior	0	0	0	0	0	0	0	0	1	2			2	22%
Data Box Related- PD	0	0	0	0	0	0	0	0	0	0			0	0%
Data Box Data Error- PD	0	0	0	0	0	0	0	0	0	0			0	0%
Data Entry Error	0	0	0	0	0	0	0	0	1	0			1	14%
Exposed	0	0	0	0	0	0	0	0	0	0			0	0%
Equipment Malfunction	1	0	0	0	0	0	0	0	0	1			1	14%
Framing- PD	0	0	0	0	0	0	0	0	0	0			0	0%
Framing of Car	0	1	1	0	1	1	4	0	1	1			1	21%
Framing of Driver	0	0	0	0	0	0	0	0	0	0			0	0%
Operator Error	0	0	0	0	0	0	0	0	0	0			0	0%
Framing of Plate	0	0	0	0	0	0	0	0	0	0			0	0%
Reject Expired	0	0	0	0	0	0	0	0	0	0			0	0%
Speed Not Determined	0	0	1	0	1	0	1	0	0	0			1	14%
Total:	1	1	2	0	3	1	5	0	3	4			7	100%
Summary Metrics														
Daily Average Vehicle Passes	0	0	0	0	0	0	0	0	0	0			0	
Average Issued Speed	18	19	19	20	20	20	20	18	19	19			19	
Average Issued Red Seconds	41.4	50.0	0.6	0.5	9.0	0.5	13.1	0.3	4.1	11.1			13.1	
Citation / Violation Issuance Rate	51%	40%	32%	45%	46%	51%	33%	43%	36%	29%			41%	
Controllable Issuance Rate	95%	94%	92%	100%	89%	96%	79%	100%	83%	75%			90%	



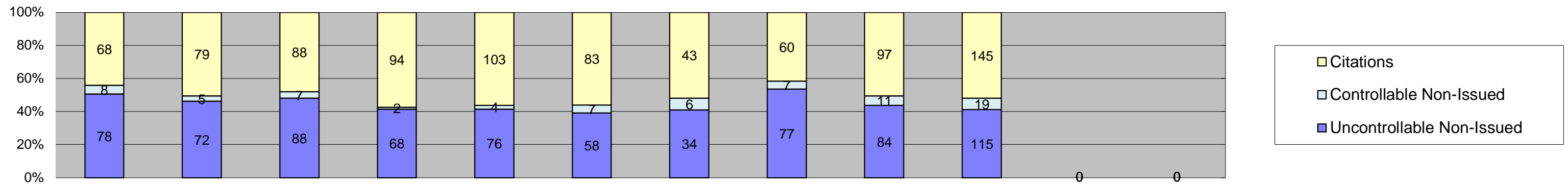
Los Angeles County MTA Expo Line
 Approach Summary Report
 Location 5097: EB to NB Exposition @ Raymond



Events	Jan-18	Feb-18	Mar-18	Apr-18	May-18	Jun-18	Jul-18	Aug-18	Sep-18	Oct-18	Nov-18	Dec-18	Year to Date Monthly Average	
													Quantity	%
Non-Violations	367	296	325	325	768	324	244	293	282	278			350	98%
Violations	7	12	3	11	6	8	6	10	8	15			9	2%
Total:	374	308	328	336	774	332	250	303	290	293			359	100%
Violations														
Uncontrollable Non-Issued	6	9	1	4	4	5	4	4	5	11			5	52%
Controllable Non-Issued	0	1	0	0	0	0	2	0	0	0			2	15%
Citations	1	2	2	7	2	3	0	6	3	4			3	33%
Total:	7	12	3	11	6	8	6	10	8	15			10	67%
Non-Violations														
Emergency Vehicle Non-Issuable	2	2	282	1	0	3	0	0	0	2			49	11%
Emergency Vehicle PD	0	0	0	0	0	0	0	0	0	0			0	0%
Intersection Control in Progress- PD	0	0	0	0	0	0	0	0	0	0			0	0%
Gate Down/ No Train	0	0	0	0	0	0	0	0	0	0			0	0%
No Violation Occurred	318	256	0	276	725	271	221	242	258	215			309	70%
Rear Axle Activation	0	1	1	1	0	0	1	0	1	1			1	0%
Right Turn- No Violation	0	0	0	0	0	0	0	0	0	0			0	0%
Test Shot	47	37	42	47	43	50	22	51	23	18			38	9%
Train Activation	0	0	0	0	0	0	0	0	0	42			42	10%
Amber Time Low	0	0	0	0	0	0	0	0	0	0			0	0%
Vehicle Stopped- PD	0	0	0	0	0	0	0	0	0	0			0	0%
Total:	367	296	325	325	768	324	244	293	282	278			439	100%
Uncontrollable Non-Issued Violations														
Administrative Dismissal	0	0	0	0	0	0	0	0	0	0			0	0%
Address/CDL/DOB Match Fail	0	0	0	0	0	0	0	0	0	0			0	0%
Car Obstructed	0	0	0	0	0	0	0	0	0	0			0	0%
Conditions Beyond Control	0	0	0	0	0	0	0	0	0	0			0	0%
Driver Identity Unclear	0	1	0	0	0	0	0	0	0	0			1	9%
Driver Obstructed	0	0	1	2	0	0	0	0	1	1			1	12%
Exposed	0	0	0	0	0	0	0	0	0	0			0	0%
Emergency Vehicle Issue	0	0	0	0	0	2	0	0	1	0			2	14%
Glare on Plate	0	0	0	0	0	0	0	0	0	0			0	0%
Glare on Windshield	0	1	0	0	0	0	0	0	0	1			1	9%
Illegible Plate	0	0	0	0	0	0	0	0	0	0			0	0%
Interest of Justice- PD	0	0	0	0	0	0	0	0	0	0			0	0%
Image Quality- PD	0	0	0	0	0	0	0	0	0	0			0	0%
Issuance Criteria Not Met- PD	0	0	0	0	0	0	0	0	0	0			0	0%
No Warning Sign	0	0	0	0	0	0	0	0	0	0			0	0%
No Plate	5	7	0	2	3	2	2	3	2	8			4	35%
No Speed Captured	0	0	0	0	0	0	0	0	0	0			0	0%
Obstruction In Photo- PD	1	0	0	0	0	0	0	0	0	1			1	9%
Out of State	0	0	0	0	1	1	2	1	1	0			1	11%
Plate Obstructed	0	0	0	0	0	0	0	0	0	0			0	0%
Short Yellow- PD	0	0	0	0	0	0	0	0	0	0			0	0%
Third Party Damage	0	0	0	0	0	0	0	0	0	0			0	0%
TSB Epired	0	0	0	0	0	0	0	0	0	0			0	0%
TSB No Hit	0	0	0	0	0	0	0	0	0	0			0	0%
Total:	6	9	1	4	4	5	4	4	5	11			11	100%
Controllable Non-Issued Violations														
Cnduent Expire	0	0	0	0	0	0	0	0	0	0			0	0%
Clarity of Plate	0	0	0	0	0	0	0	0	0	0			0	0%
Clarity of Driver	0	0	0	0	0	0	0	0	0	0			0	0%
Dark Interior	0	0	0	0	0	0	2	0	0	0			2	67%
Data Box Related- PD	0	0	0	0	0	0	0	0	0	0			0	0%
Data Box Data Error- PD	0	0	0	0	0	0	0	0	0	0			0	0%
Data Entry Error	0	1	0	0	0	0	0	0	0	0			1	33%
Exposed	0	0	0	0	0	0	0	0	0	0			0	0%
Equipment Malfunction	0	0	0	0	0	0	0	0	0	0			0	0%
Framing- PD	0	0	0	0	0	0	0	0	0	0			0	0%
Framing of Car	0	0	0	0	0	0	0	0	0	0			0	0%
Framing of Driver	0	0	0	0	0	0	0	0	0	0			0	0%
Operator Error	0	0	0	0	0	0	0	0	0	0			0	0%
Framing of Plate	0	0	0	0	0	0	0	0	0	0			0	0%
Reject Expired	0	0	0	0	0	0	0	0	0	0			0	0%
Speed Not Determined	0	0	0	0	0	0	0	0	0	0			0	0%
Total:	0	1	0	0	0	0	2	0	0	0			3	100%
Summary Metrics														
Daily Average Vehicle Passes	0	0	0	0	0	0	0	0	0	0			0	
Average Issued Speed	18	16	21	18	14	17	22	17	18	16			18	
Average Issued Red Seconds	0.8	346.9	0.3	194.9	334.4	156.6	384.9	288.6	256.1	88.9			205.2	
Citation / Violation Issuance Rate	14%	17%	67%	64%	33%	38%	0%	60%	38%	27%			40%	
Controllable Issuance Rate	100%	67%	100%	100%	100%	100%	0%	100%	100%	100%			96%	



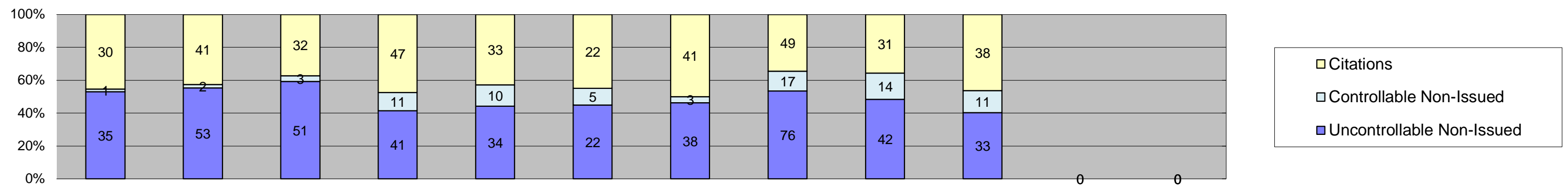
Los Angeles County MTA Expo Line
Approach Summary Report
Location 5107: EB to NB Exposition @ Normandie



Events	Jan-18	Feb-18	Mar-18	Apr-18	May-18	Jun-18	Jul-18	Aug-18	Sep-18	Oct-18	Nov-18	Dec-18	Year to Date Monthly Average	
													Quantity	%
Non-Violations	485	413	482	435	419	475	406	427	361	420			432	72%
Violations	154	156	183	164	183	148	83	144	192	279			169	28%
Total:	639	569	665	599	602	623	489	571	553	699			601	100%
Violations														
Uncontrollable Non-Issued	78	72	88	68	76	58	34	77	84	115			75	44%
Controllable Non-Issued	8	5	7	2	4	7	6	7	11	19			8	5%
Citations	68	79	88	94	103	83	43	60	97	145			86	51%
Total:	154	156	183	164	183	148	83	144	192	279			169	49%
Non-Violations														
Emergency Vehicle Non-Issuable	5	1	5	2	0	3	7	5	6	5			4	1%
Emergency Vehicle PD	0	0	0	0	3	0	0	0	0	0			3	1%
Intersection Control in Progress- PD	0	0	0	1	0	0	0	0	0	0			1	0%
Gate Down/ No Train	0	0	0	0	0	0	0	0	0	0			0	0%
No Violation Occurred	336	294	329	299	286	328	258	269	221	141			276	57%
Rear Axle Activation	6	3	2	3	2	7	7	21	15	39			11	2%
Right Turn- No Violation	0	0	0	0	0	0	0	0	0	0			0	0%
Test Shot	137	115	146	130	128	137	134	132	118	124			130	27%
Train Activation	0	0	0	0	0	0	0	0	1	111			56	12%
Amber Time Low	0	0	0	0	0	0	0	0	0	0			0	0%
Vehicle Stopped- PD	1	0	0	0	0	0	0	0	0	0			1	0%
Total:	485	413	482	435	419	475	406	427	361	420			482	100%
Uncontrollable Non-Issued Violations														
Administrative Dismissal	0	0	0	0	0	0	0	0	0	0			0	0%
Address/CDL/DOB Match Fail	0	0	0	0	0	0	0	0	0	0			0	0%
Car Obstructed	2	0	1	2	3	0	0	2	1	0			2	2%
Conditions Beyond Control	0	0	0	0	0	0	0	0	0	0			0	0%
Driver Identity Unclear	6	8	5	0	0	0	2	2	3	7			5	5%
Driver Obstructed	0	1	3	2	4	5	1	6	5	3			3	4%
Exposed	0	0	0	0	0	0	0	0	0	0			0	0%
Emergency Vehicle Issue	0	1	0	0	0	1	1	2	0	1			1	1%
Glare on Plate	35	23	22	24	25	11	9	12	23	44			23	26%
Glare on Windshield	2	2	1	1	1	0	1	7	5	3			3	3%
Illegible Plate	0	0	0	0	0	0	1	1	0	2			1	1%
Interest of Justice- PD	0	0	0	0	0	0	0	0	0	0			0	0%
Image Quality- PD	3	0	1	3	3	5	1	2	0	1			2	3%
Issuance Criteria Not Met- PD	0	0	0	0	0	0	0	0	0	4			4	4%
No Warning Sign	0	0	0	0	0	0	0	0	0	0			0	0%
No Plate	21	22	31	31	31	27	16	36	40	39			29	33%
No Speed Captured	0	0	0	0	0	0	0	0	0	0			0	0%
Obstruction In Photo- PD	4	7	5	4	5	4	1	0	1	4			4	4%
Out of State	0	2	4	0	0	2	1	2	3	4			3	3%
Plate Obstructed	5	6	6	1	4	3	0	5	2	3			4	4%
Short Yellow- PD	0	0	0	0	0	0	0	0	0	0			0	0%
Third Party Damage	0	0	0	0	0	0	0	0	0	0			0	0%
TSB Epired	0	0	0	0	0	0	0	0	0	0			0	0%
TSB No Hit	0	0	9	0	0	0	0	0	1	0			5	6%
Total:	78	72	88	68	76	58	34	77	84	115			89	100%
Controllable Non-Issued Violations														
Cnduent Expire	0	0	0	0	0	0	0	0	0	0			0	0%
Clarity of Plate	0	0	0	0	0	0	0	0	0	0			0	0%
Clarity of Driver	0	0	0	0	0	0	0	0	0	0			0	0%
Dark Interior	5	0	2	1	0	1	1	0	3	10			3	27%
Data Box Related- PD	0	0	0	0	0	0	0	0	0	0			0	0%
Data Box Data Error- PD	0	0	0	0	0	0	0	0	0	0			0	0%
Data Entry Error	0	0	2	0	0	0	1	2	4	2			2	18%
Exposed	0	0	0	0	0	0	0	0	0	0			0	0%
Equipment Malfunction	1	0	0	0	0	0	0	1	0	0			1	8%
Framing- PD	0	0	0	0	0	0	0	0	0	0			0	0%
Framing of Car	1	4	1	1	3	5	4	4	4	7			3	28%
Framing of Driver	0	0	0	0	0	0	0	0	0	0			0	0%
Operator Error	0	0	0	0	0	0	0	0	0	0			0	0%
Framing of Plate	1	0	0	0	0	0	0	0	0	0			1	8%
Reject Expired	0	0	0	0	0	0	0	0	0	0			0	0%
Speed Not Determined	0	1	2	0	1	1	0	0	0	0			1	10%
Total:	8	5	7	2	4	7	6	7	11	19			12	100%
Summary Metrics														
Daily Average Vehicle Passes	0	0	0	0	0	0	0	0	0	0			0	
Average Issued Speed	20	21	20	21	20	21	21	20	19	20			20	
Average Issued Red Seconds	0.5	0.4	1.3	2.1	1.0	0.5	2.7	0.5	1.6	1.4			1.2	
Citation / Violation Issuance Rate	44%	51%	48%	57%	56%	56%	52%	42%	51%	52%			51%	
Controllable Issuance Rate	89%	94%	93%	98%	96%	92%	88%	90%	90%	88%			92%	



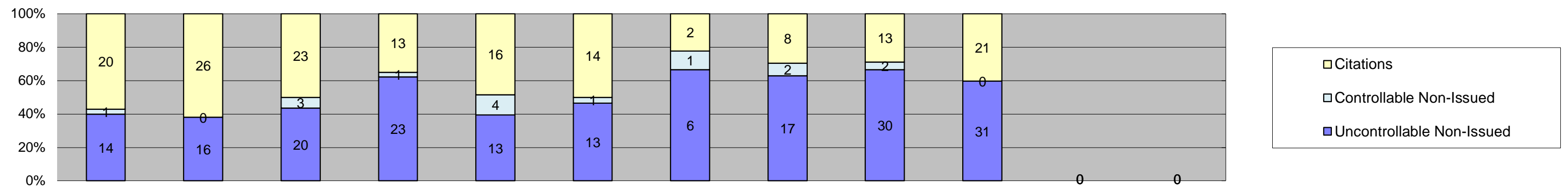
Los Angeles County MTA Expo Line
 Approach Summary Report
 Location 5109: WB to SB Exposition @ Normandie



Events	Jan-18	Feb-18	Mar-18	Apr-18	May-18	Jun-18	Jul-18	Aug-18	Sep-18	Oct-18	Nov-18	Dec-18	Year to Date Monthly Average	
													Quantity	%
Non-Violations	803	705	803	791	832	802	777	922	789	841			807	90%
Violations	66	96	86	99	77	49	82	142	87	82			87	10%
Total:	869	801	889	890	909	851	859	1,064	876	923			893	100%
Violations														
Uncontrollable Non-Issued	35	53	51	41	34	22	38	76	42	33			43	49%
Controllable Non-Issued	1	2	3	11	10	5	3	17	14	11			8	9%
Citations	30	41	32	47	33	22	41	49	31	38			36	42%
Total:	66	96	86	99	77	49	82	142	87	82			87	58%
Non-Violations														
Emergency Vehicle Non-Issuable	0	2	2	1	0	3	2	4	3	0			2	0%
Emergency Vehicle PD	0	0	0	0	0	1	0	1	0	0			1	0%
Intersection Control in Progress- PD	0	0	0	0	0	0	0	0	0	0			0	0%
Gate Down/ No Train	0	0	0	0	0	0	0	0	0	0			0	0%
No Violation Occurred	603	503	598	609	641	597	594	700	552	250			565	59%
Rear Axle Activation	12	8	6	7	3	8	7	18	20	11			10	1%
Right Turn- No Violation	0	0	0	0	0	0	0	0	0	0			0	0%
Test Shot	188	192	197	174	188	193	174	199	208	215			193	20%
Train Activation	0	0	0	0	0	0	0	0	6	365			186	19%
Amber Time Low	0	0	0	0	0	0	0	0	0	0			0	0%
Vehicle Stopped- PD	0	0	0	0	0	0	0	0	0	0			0	0%
Total:	803	705	803	791	832	802	777	922	789	841			956	100%
Uncontrollable Non-Issued Violations														
Administrative Dismissal	0	0	0	0	0	0	0	0	0	0			0	0%
Address/CDL/DOB Match Fail	0	0	0	0	0	0	0	0	0	0			0	0%
Car Obstructed	0	2	2	1	1	0	0	7	2	2			2	5%
Conditions Beyond Control	0	0	0	0	0	0	0	0	0	0			0	0%
Driver Identity Unclear	1	4	1	2	0	1	3	2	0	0			2	4%
Driver Obstructed	1	2	3	3	0	1	4	7	2	2			3	5%
Exposed	0	0	0	0	0	0	0	0	0	0			0	0%
Emergency Vehicle Issue	0	2	1	1	1	0	0	0	0	0			1	2%
Glare on Plate	12	16	12	12	14	8	11	18	11	7			12	23%
Glare on Windshield	0	0	1	0	0	2	4	6	1	0			3	5%
Illegible Plate	0	0	0	0	0	0	0	0	0	0			0	0%
Interest of Justice- PD	0	0	0	0	0	0	0	0	0	0			0	0%
Image Quality- PD	1	0	0	0	0	0	0	2	0	0			2	3%
Issuance Criteria Not Met- PD	0	0	0	0	0	0	0	0	0	1			1	2%
No Warning Sign	0	0	0	0	0	0	0	0	0	0			0	0%
No Plate	12	18	21	19	13	8	11	19	18	17			16	29%
No Speed Captured	0	0	0	0	0	0	0	0	0	0			0	0%
Obstruction In Photo- PD	3	4	1	0	0	1	1	5	0	0			3	5%
Out of State	1	1	3	0	1	0	3	8	2	0			3	5%
Plate Obstructed	4	3	4	3	4	1	1	2	4	3			3	5%
Short Yellow- PD	0	0	0	0	0	0	0	0	0	0			0	0%
Third Party Damage	0	0	0	0	0	0	0	0	0	0			0	0%
TSB Expired	0	1	0	0	0	0	0	0	2	1			1	3%
TSB No Hit	0	0	2	0	0	0	0	0	0	0			2	4%
Total:	35	53	51	41	34	22	38	76	42	33			53	100%
Controllable Non-Issued Violations														
Cnduent Expire	0	0	0	0	0	0	0	0	0	0			0	0%
Clarity of Plate	0	0	0	0	0	0	0	0	0	0			0	0%
Clarity of Driver	0	0	0	0	0	0	0	0	0	0			0	0%
Dark Interior	0	1	0	2	0	0	0	1	2	3			2	12%
Data Box Related- PD	0	0	0	0	0	0	0	0	0	0			0	0%
Data Box Data Error- PD	0	0	0	0	0	0	0	0	0	0			0	0%
Data Entry Error	0	1	1	1	1	0	0	2	1	0			1	8%
Exposed	0	0	0	0	0	0	0	0	0	0			0	0%
Equipment Malfunction	0	0	0	0	0	0	0	0	0	2			2	13%
Framing- PD	0	0	0	0	0	0	0	0	0	0			0	0%
Framing of Car	1	0	2	8	9	5	3	11	10	6			6	41%
Framing of Driver	0	0	0	0	0	0	0	3	0	0			3	20%
Operator Error	0	0	0	0	0	0	0	0	0	0			0	0%
Framing of Plate	0	0	0	0	0	0	0	0	0	0			0	0%
Reject Expired	0	0	0	0	0	0	0	0	1	0			1	7%
Speed Not Determined	0	0	0	0	0	0	0	0	0	0			0	0%
Total:	1	2	3	11	10	5	3	17	14	11			15	100%
Summary Metrics														
Daily Average Vehicle Passes	0	0	0	0	0	0	0	0	0	0			0	
Average Issued Speed	20	22	22	21	21	22	21	19	20	20			21	
Average Issued Red Seconds	5.5	0.5	0.4	2.3	0.5	0.6	2.0	0.6	1.2	0.5			1.4	
Citation / Violation Issuance Rate	45%	43%	37%	47%	43%	45%	50%	35%	36%	46%			43%	
Controllable Issuance Rate	97%	95%	91%	81%	77%	81%	93%	74%	69%	78%			84%	



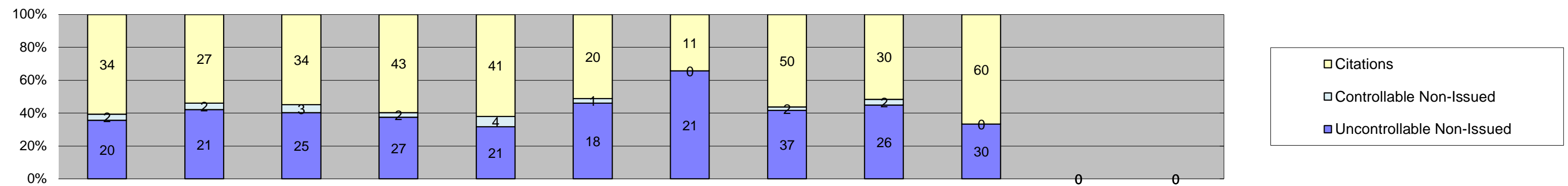
Los Angeles County MTA Expo Line
Approach Summary Report
Location 5117: EB to NB Exposition @ Halldale



Events	Jan-18	Feb-18	Mar-18	Apr-18	May-18	Jun-18	Jul-18	Aug-18	Sep-18	Oct-18	Nov-18	Dec-18	Year to Date Monthly Average	
													Quantity	%
Non-Violations	616	585	642	537	642	541	457	485	408	421			533	94%
Violations	35	42	46	37	33	28	9	27	45	52			35	6%
Total:	651	627	688	574	675	569	466	512	453	473			569	100%
Violations														
Uncontrollable Non-Issued	14	16	20	23	13	13	6	17	30	31			18	51%
Controllable Non-Issued	1	0	3	1	4	1	1	2	2	0			2	5%
Citations	20	26	23	13	16	14	2	8	13	21			16	44%
Total:	35	42	46	37	33	28	9	27	45	52			36	56%
Non-Violations														
Emergency Vehicle Non-Issuable	2	1	0	2	3	1	1	0	5	0			2	0%
Emergency Vehicle PD	0	0	0	0	0	0	0	0	0	0			0	0%
Intersection Control in Progress- PD	0	0	0	0	0	0	0	0	0	0			0	0%
Gate Down/ No Train	0	0	0	0	0	0	0	0	0	0			0	0%
No Violation Occurred	487	456	499	402	494	403	334	352	271	241			394	70%
Rear Axle Activation	0	3	2	0	1	0	1	0	1	0			2	0%
Right Turn- No Violation	0	0	0	0	0	0	0	0	0	0			0	0%
Test Shot	127	124	141	133	144	137	121	133	123	122			131	23%
Train Activation	0	0	0	0	0	0	0	0	8	58			33	6%
Amber Time Low	0	0	0	0	0	0	0	0	0	0			0	0%
Vehicle Stopped- PD	0	1	0	0	0	0	0	0	0	0			1	0%
Total:	616	585	642	537	642	541	457	485	408	421			562	100%
Uncontrollable Non-Issued Violations														
Administrative Dismissal	0	0	0	0	0	0	0	0	0	0			0	0%
Address/CDL/DOB Match Fail	0	0	0	0	0	0	0	0	0	0			0	0%
Car Obstructed	1	3	5	3	0	1	0	1	6	4			3	10%
Conditions Beyond Control	0	0	0	0	0	0	0	0	0	0			0	0%
Driver Identity Unclear	1	3	0	0	0	0	0	0	0	3			2	8%
Driver Obstructed	0	0	0	2	1	1	0	1	1	1			1	4%
Exposed	0	0	0	0	0	0	0	0	0	0			0	0%
Emergency Vehicle Issue	1	0	1	0	1	0	0	1	1	1			1	3%
Glare on Plate	1	1	0	3	1	2	0	1	4	2			2	6%
Glare on Windshield	0	0	0	1	0	1	0	1	0	1			1	3%
Illegible Plate	1	1	0	0	0	0	0	1	0	1			1	3%
Interest of Justice- PD	0	0	0	0	0	0	0	0	0	0			0	0%
Image Quality- PD	0	0	0	1	0	0	0	0	0	0			1	3%
Issuance Criteria Not Met- PD	0	0	0	0	0	0	0	0	0	1			1	3%
No Warning Sign	0	0	0	0	0	0	0	0	0	0			0	0%
No Plate	6	4	9	6	3	4	5	7	10	10			6	21%
No Speed Captured	0	0	0	0	0	0	0	0	0	0			0	0%
Obstruction In Photo- PD	2	2	1	4	1	1	0	1	1	0			2	5%
Out of State	0	1	0	0	0	1	1	0	1	0			1	3%
Plate Obstructed	1	1	1	3	6	2	0	2	3	6			3	9%
Short Yellow- PD	0	0	0	0	0	0	0	0	0	0			0	0%
Third Party Damage	0	0	0	0	0	0	0	0	0	0			0	0%
TSB Expired	0	0	0	0	0	0	0	1	3	1			2	6%
TSB No Hit	0	0	3	0	0	0	0	0	0	0			3	10%
Total:	14	16	20	23	13	13	6	17	30	31			30	100%
Controllable Non-Issued Violations														
Conduent Expire	0	0	0	0	0	0	0	0	0	0			0	0%
Clarity of Plate	0	0	0	0	1	0	0	0	0	0			1	19%
Clarity of Driver	0	0	0	0	0	0	0	0	0	0			0	0%
Dark Interior	1	0	1	1	2	0	1	1	2	0			1	24%
Data Box Related- PD	0	0	0	0	0	0	0	0	0	0			0	0%
Data Box Data Error- PD	0	0	0	0	0	0	0	0	0	0			0	0%
Data Entry Error	0	0	1	0	1	0	0	1	0	0			1	19%
Exposed	0	0	0	0	0	0	0	0	0	0			0	0%
Equipment Malfunction	0	0	0	0	0	1	0	0	0	0			1	19%
Framing- PD	0	0	0	0	0	0	0	0	0	0			0	0%
Framing of Car	0	0	1	0	0	0	0	0	0	0			1	19%
Framing of Driver	0	0	0	0	0	0	0	0	0	0			0	0%
Operator Error	0	0	0	0	0	0	0	0	0	0			0	0%
Framing of Plate	0	0	0	0	0	0	0	0	0	0			0	0%
Reject Expired	0	0	0	0	0	0	0	0	0	0			0	0%
Speed Not Determined	0	0	0	0	0	0	0	0	0	0			0	0%
Total:	1	0	3	1	4	1	1	2	2	0			5	100%
Summary Metrics														
Daily Average Vehicle Passes	0	0	0	0	0	0	0	0	0	0			0	
Average Issued Speed	16	17	18	17	17	16	17	17	17	17			17	
Average Issued Red Seconds	64.8	15.4	28.3	154.4	101.9	47.5	115.4	16.2	47.1	29.7			62.1	
Citation / Violation Issuance Rate	57%	62%	50%	35%	48%	50%	22%	30%	29%	40%			42%	
Controllable Issuance Rate	95%	100%	88%	93%	80%	93%	67%	80%	87%	100%			88%	



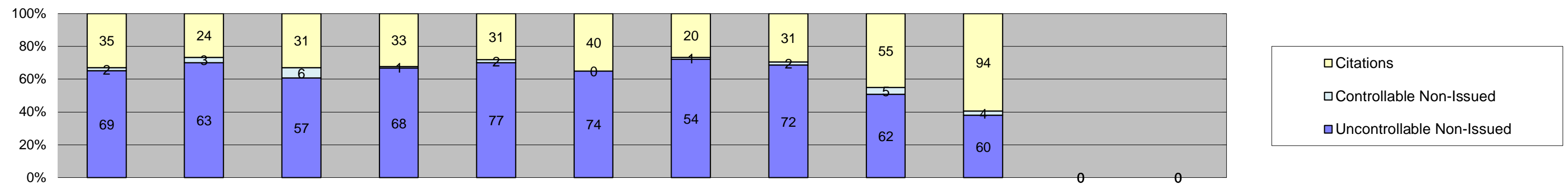
Los Angeles County MTA Expo Line
 Approach Summary Report
 Location 5119: WB to SB Exposition @ Denker



Events	Jan-18	Feb-18	Mar-18	Apr-18	May-18	Jun-18	Jul-18	Aug-18	Sep-18	Oct-18	Nov-18	Dec-18	Year to Date Monthly Average	
													Quantity	%
Non-Violations	372	347	399	404	396	407	376	382	356	396			384	86%
Violations	56	50	62	72	66	39	32	89	58	90			61	14%
Total:	428	397	461	476	462	446	408	471	414	486			445	100%
Violations														
Uncontrollable Non-Issued	20	21	25	27	21	18	21	37	26	30			25	40%
Controllable Non-Issued	2	2	3	2	4	1	0	2	2	0			2	4%
Citations	34	27	34	43	41	20	11	50	30	60			35	57%
Total:	56	50	62	72	66	39	32	89	58	90			62	43%
Non-Violations														
Emergency Vehicle Non-Issuable	1	0	0	3	5	1	2	1	0	2			2	1%
Emergency Vehicle PD	0	0	0	0	0	0	1	0	0	0			1	0%
Intersection Control in Progress-PD	0	0	0	0	0	0	0	0	0	0			0	0%
Gate Down/ No Train	0	0	0	0	0	0	0	0	0	0			0	0%
No Violation Occurred	217	207	242	251	230	235	229	231	198	176			222	54%
Rear Axle Activation	12	12	13	18	9	8	8	13	13	16			12	3%
Right Turn- No Violation	0	0	0	0	0	0	0	0	0	0			0	0%
Test Shot	142	128	144	132	152	163	136	137	139	143			142	34%
Train Activation	0	0	0	0	0	0	0	0	6	59			33	8%
Amber Time Low	0	0	0	0	0	0	0	0	0	0			0	0%
Vehicle Stopped- PD	0	0	0	0	0	0	0	0	0	0			0	0%
Total:	372	347	399	404	396	407	376	382	356	396			411	100%
Uncontrollable Non-Issued Violations														
Administrative Dismissal	0	0	0	0	0	0	0	0	0	0			0	0%
Address/CDL/DOB Match Fail	0	0	0	0	0	0	0	0	0	0			0	0%
Car Obstructed	0	0	0	2	0	0	0	1	0	1			1	4%
Conditions Beyond Control	0	0	0	0	0	0	0	0	0	0			0	0%
Driver Identity Unclear	2	0	1	0	1	0	0	0	0	2			2	5%
Driver Obstructed	1	0	0	0	0	0	0	1	0	0			1	3%
Exposed	0	0	0	0	0	0	0	0	0	0			0	0%
Emergency Vehicle Issue	2	2	1	3	0	2	0	2	5	3			3	8%
Glare on Plate	2	7	5	12	6	6	6	9	10	3			7	21%
Glare on Windshield	0	0	0	0	0	0	0	0	0	0			0	0%
Illegible Plate	1	0	0	1	0	0	1	1	0	3			1	4%
Interest of Justice- PD	0	0	0	0	0	0	0	0	0	0			0	0%
Image Quality- PD	0	0	0	0	0	0	0	0	0	0			0	0%
Issuance Criteria Not Met- PD	0	0	0	0	0	0	0	0	0	0			0	0%
No Warning Sign	0	0	0	0	0	0	0	0	0	0			0	0%
No Plate	9	8	14	8	13	10	12	17	10	16			12	37%
No Speed Captured	0	0	0	0	0	0	0	0	0	0			0	0%
Obstruction In Photo- PD	1	3	2	0	0	0	0	1	0	0			2	5%
Out of State	0	0	0	0	0	0	2	0	0	1			2	5%
Plate Obstructed	2	1	1	1	1	0	0	5	1	1			2	5%
Short Yellow- PD	0	0	0	0	0	0	0	0	0	0			0	0%
Third Party Damage	0	0	0	0	0	0	0	0	0	0			0	0%
TSB Epired	0	0	0	0	0	0	0	0	0	0			0	0%
TSB No Hit	0	0	1	0	0	0	0	0	0	0			1	3%
Total:	20	21	25	27	21	18	21	37	26	30			32	100%
Controllable Non-Issued Violations														
Cnduent Expire	0	0	0	0	0	0	0	0	0	0			0	0%
Clarity of Plate	0	0	0	0	0	0	0	0	0	0			0	0%
Clarity of Driver	0	0	0	0	0	0	0	0	0	0			0	0%
Dark Interior	1	2	2	1	1	0	0	1	1	0			1	23%
Data Box Related- PD	0	0	0	0	0	0	0	0	0	0			0	0%
Data Box Data Error- PD	0	0	0	0	0	0	0	0	0	0			0	0%
Data Entry Error	0	0	0	0	0	0	0	1	0	0			1	18%
Exposed	0	0	0	0	0	0	0	0	0	0			0	0%
Equipment Malfunction	0	0	0	0	0	0	0	0	0	0			0	0%
Framing- PD	0	0	0	0	0	0	0	0	0	0			0	0%
Framing of Car	0	0	0	1	1	1	0	0	0	0			1	18%
Framing of Driver	0	0	0	0	0	0	0	0	0	0			0	0%
Operator Error	0	0	0	0	0	0	0	0	0	0			0	0%
Framing of Plate	0	0	0	0	0	0	0	0	0	0			0	0%
Reject Expired	0	0	0	0	0	0	0	0	1	0			1	18%
Speed Not Determined	1	0	1	0	2	0	0	0	0	0			1	24%
Total:	2	2	3	2	4	1	0	2	2	0			6	100%
Summary Metrics														
Daily Average Vehicle Passes	0	0	0	0	0	0	0	0	0	0			0	
Average Issued Speed	18	17	17	18	19	18	18	17	17	16			18	
Average Issued Red Seconds	2.7	11.5	7.6	5.4	16.0	28.3	38.1	14.5	6.2	18.1			14.8	
Citation / Violation Issuance Rate	61%	54%	55%	60%	62%	51%	34%	56%	52%	67%			55%	
Controllable Issuance Rate	94%	93%	92%	96%	91%	95%	100%	96%	94%	100%			95%	



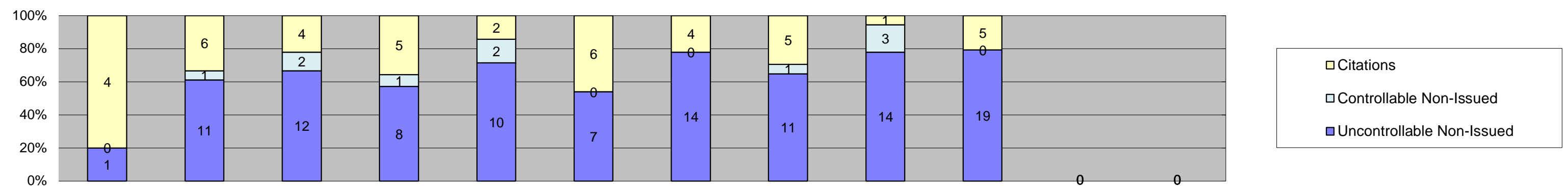
Los Angeles County MTA Expo Line
 Approach Summary Report
 Location 5127: EB to NB Exposition @ Western



Events	Jan-18	Feb-18	Mar-18	Apr-18	May-18	Jun-18	Jul-18	Aug-18	Sep-18	Oct-18	Nov-18	Dec-18	Year to Date Monthly Average	
													Quantity	%
Non-Violations	450	402	462	407	401	404	377	422	400	402			413	79%
Violations	106	90	94	102	110	114	75	105	122	158			108	21%
Total:	556	492	556	509	511	518	452	527	522	560			520	100%
Violations														
Uncontrollable Non-Issued	69	63	57	68	77	74	54	72	62	60			66	61%
Controllable Non-Issued	2	3	6	1	2	0	1	2	5	4			3	3%
Citations	35	24	31	33	31	40	20	31	55	94			39	37%
Total:	106	90	94	102	110	114	75	105	122	158			108	63%
Non-Violations														
Emergency Vehicle Non-Issuable	2	1	1	0	5	3	2	1	2	1			2	0%
Emergency Vehicle PD	0	0	0	0	0	0	0	0	0	0			0	0%
Intersection Control in Progress-PD	0	0	0	0	0	0	0	0	0	0			0	0%
Gate Down/ No Train	0	0	0	0	0	0	0	0	0	0			0	0%
No Violation Occurred	285	249	305	260	249	265	250	257	197	97			241	50%
Rear Axle Activation	19	14	13	21	13	12	7	19	36	16			17	4%
Right Turn- No Violation	0	0	0	0	0	0	0	0	0	0			0	0%
Test Shot	144	138	143	126	134	124	118	145	146	127			135	28%
Train Activation	0	0	0	0	0	0	0	0	19	161			90	19%
Amber Time Low	0	0	0	0	0	0	0	0	0	0			0	0%
Vehicle Stopped- PD	0	0	0	0	0	0	0	0	0	0			0	0%
Total:	450	402	462	407	401	404	377	422	400	402			485	100%
Uncontrollable Non-Issued Violations														
Administrative Dismissal	0	0	0	0	0	0	0	1	0	0			1	1%
Address/CDL/DOB Match Fail	0	0	0	0	0	0	0	0	0	0			0	0%
Car Obstructed	1	0	0	0	1	1	0	0	2	5			2	2%
Conditions Beyond Control	0	0	0	0	0	0	0	0	0	0			0	0%
Driver Identity Unclear	4	4	0	0	1	0	0	0	3	7			4	4%
Driver Obstructed	0	2	0	0	0	3	0	0	2	2			2	3%
Exposed	0	0	0	0	0	0	0	0	0	0			0	0%
Emergency Vehicle Issue	0	0	0	0	0	0	0	1	1	0			1	1%
Glare on Plate	39	34	24	41	48	41	32	32	13	2			31	36%
Glare on Windshield	0	1	0	2	0	0	0	0	0	0			2	2%
Illegible Plate	0	0	0	0	1	0	1	2	0	2			2	2%
Interest of Justice- PD	0	1	0	0	0	0	0	0	0	0			1	1%
Image Quality- PD	0	0	0	0	0	0	0	0	0	0			0	0%
Issuance Criteria Not Met- PD	0	0	0	0	0	0	0	0	0	1			1	1%
No Warning Sign	0	0	0	0	0	0	0	0	0	0			0	0%
No Plate	16	19	24	19	23	24	20	30	27	34			24	28%
No Speed Captured	0	0	0	0	0	0	0	0	0	0			0	0%
Obstruction In Photo- PD	1	0	0	1	1	1	0	3	2	3			2	2%
Out of State	2	0	1	0	1	1	0	1	1	3			1	2%
Plate Obstructed	6	2	5	5	1	3	1	2	4	1			3	4%
Short Yellow- PD	0	0	0	0	0	0	0	0	0	0			0	0%
Third Party Damage	0	0	0	0	0	0	0	0	0	0			0	0%
TSB Expired	0	0	0	0	0	0	0	0	7	0			7	8%
TSB No Hit	0	0	3	0	0	0	0	0	0	0			3	4%
Total:	69	63	57	68	77	74	54	72	62	60			85	100%
Controllable Non-Issued Violations														
Cnduent Expire	0	0	0	0	0	0	0	0	0	0			0	0%
Clarity of Plate	0	0	0	0	0	0	0	0	0	0			0	0%
Clarity of Driver	0	0	0	0	0	0	0	0	0	0			0	0%
Dark Interior	0	1	0	0	1	0	0	0	3	3			2	28%
Data Box Related- PD	0	0	0	0	0	0	0	0	0	0			0	0%
Data Box Data Error- PD	0	0	0	0	0	0	0	0	0	0			0	0%
Data Entry Error	1	2	5	0	0	0	0	2	1	0			2	31%
Exposed	0	0	0	0	0	0	0	0	0	0			0	0%
Equipment Malfunction	0	0	0	0	0	0	0	0	1	1			1	14%
Framing- PD	0	0	0	0	0	0	0	0	0	0			0	0%
Framing of Car	0	0	0	1	1	0	1	0	0	0			1	14%
Framing of Driver	0	0	0	0	0	0	0	0	0	0			0	0%
Operator Error	0	0	0	0	0	0	0	0	0	0			0	0%
Framing of Plate	0	0	0	0	0	0	0	0	0	0			0	0%
Reject Expired	0	0	0	0	0	0	0	0	0	0			0	0%
Speed Not Determined	1	0	1	0	0	0	0	0	0	0			1	14%
Total:	2	3	6	1	2	0	1	2	5	4			7	100%
Summary Metrics														
Daily Average Vehicle Passes	0	0	0	0	0	0	0	0	0	0			0	
Average Issued Speed	19	20	19	20	20	19	20	19	19	19			19	
Average Issued Red Seconds	0.6	0.3	0.4	0.3	0.3	0.3	0.5	0.4	2.8	0.5			0.6	
Citation / Violation Issuance Rate	33%	27%	33%	32%	28%	35%	27%	30%	45%	59%			35%	
Controllable Issuance Rate	95%	89%	84%	97%	94%	100%	95%	94%	92%	96%			94%	



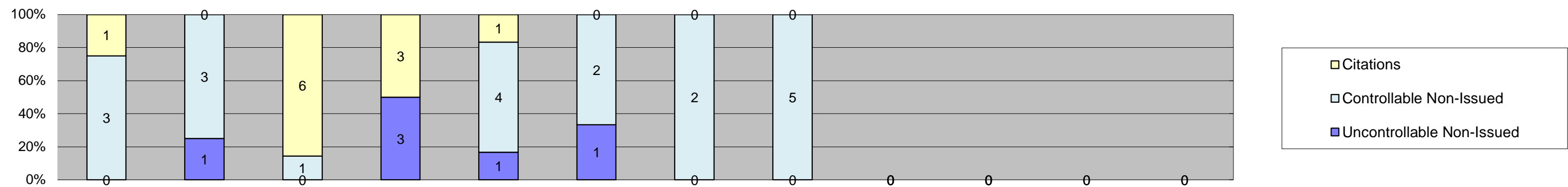
Los Angeles County MTA Expo Line
 Approach Summary Report
 Location 5129: WB to SB Exposition @ Western



Events	Jan-18	Feb-18	Mar-18	Apr-18	May-18	Jun-18	Jul-18	Aug-18	Sep-18	Oct-18	Nov-18	Dec-18	Year to Date Monthly Average	
	Quantity												Quantity	%
Non-Violations	674	690	677	661	692	610	529	591	563	548			624	98%
Violations	5	18	18	14	14	13	18	17	18	24			16	2%
Total:	679	708	695	675	706	623	547	608	581	572			639	100%
Violations														
Uncontrollable Non-Issued	1	11	12	8	10	7	14	11	14	19			11	65%
Controllable Non-Issued	0	1	2	1	2	0	0	1	3	0			2	10%
Citations	4	6	4	5	2	6	4	5	1	5			4	25%
Total:	5	18	18	14	14	13	18	17	18	24			17	75%
Non-Violations														
Emergency Vehicle Non-Issuable	0	0	4	0	1	2	1	0	1	0			2	0%
Emergency Vehicle PD	0	0	0	0	0	0	0	0	0	0			0	0%
Intersection Control in Progress- PD	0	0	0	0	0	0	0	0	0	0			0	0%
Gate Down/ No Train	0	0	0	0	0	0	0	0	0	0			0	0%
No Violation Occurred	499	540	516	509	517	454	380	423	402	280			452	67%
Rear Axle Activation	18	5	9	10	7	11	11	18	16	9			11	2%
Right Turn- No Violation	0	0	0	0	0	0	0	0	0	0			0	0%
Test Shot	156	145	148	142	167	143	137	150	134	138			146	22%
Train Activation	0	0	0	0	0	0	0	0	10	121			66	10%
Amber Time Low	0	0	0	0	0	0	0	0	0	0			0	0%
Vehicle Stopped- PD	1	0	0	0	0	0	0	0	0	0			1	0%
Total:	674	690	677	661	692	610	529	591	563	548			678	100%
Uncontrollable Non-Issued Violations														
Administrative Dismissal	0	0	0	0	0	0	0	0	0	0			0	0%
Address/CDL/DOB Match Fail	0	0	0	0	0	0	0	0	0	0			0	0%
Car Obstructed	0	0	0	0	0	0	0	0	0	4			4	18%
Conditions Beyond Control	0	0	0	0	0	0	0	0	0	0			0	0%
Driver Identity Unclear	0	1	0	0	0	0	0	0	0	0			1	4%
Driver Obstructed	0	1	0	0	0	0	0	0	0	0			1	4%
Exposed	0	0	0	0	0	0	0	0	0	0			0	0%
Emergency Vehicle Issue	0	0	0	0	0	0	0	0	0	0			0	0%
Glare on Plate	0	1	7	5	6	5	1	1	5	3			4	17%
Glare on Windshield	0	0	0	0	0	0	0	0	0	0			0	0%
Illegible Plate	0	0	0	0	0	0	2	0	0	0			2	9%
Interest of Justice- PD	0	0	0	0	0	0	0	0	0	0			0	0%
Image Quality- PD	0	0	0	0	0	0	0	0	0	0			0	0%
Issuance Criteria Not Met- PD	0	0	0	0	0	0	0	0	0	0			0	0%
No Warning Sign	0	0	0	0	0	0	0	0	0	0			0	0%
No Plate	1	8	2	2	4	2	10	10	8	11			6	26%
No Speed Captured	0	0	0	0	0	0	0	0	0	0			0	0%
Obstruction In Photo- PD	0	0	0	0	0	0	0	0	0	0			0	0%
Out of State	0	0	1	0	0	0	1	0	0	0			1	4%
Plate Obstructed	0	0	0	1	0	0	0	0	1	0			1	4%
Short Yellow- PD	0	0	0	0	0	0	0	0	0	0			0	0%
Third Party Damage	0	0	0	0	0	0	0	0	0	0			0	0%
TSB Expired	0	0	0	0	0	0	0	0	0	1			1	4%
TSB No Hit	0	0	2	0	0	0	0	0	0	0			2	9%
Total:	1	11	12	8	10	7	14	11	14	19			23	100%
Controllable Non-Issued Violations														
Conduent Expire	0	0	0	0	0	0	0	0	0	0			0	0%
Clarity of Plate	0	0	0	0	0	0	0	0	0	0			0	0%
Clarity of Driver	0	0	0	0	0	0	0	0	0	0			0	0%
Dark Interior	0	0	1	0	0	0	0	0	0	0			1	30%
Data Box Related- PD	0	0	0	0	0	0	0	0	0	0			0	0%
Data Box Data Error- PD	0	0	0	0	0	0	0	0	0	0			0	0%
Data Entry Error	0	1	1	1	1	0	0	1	3	0			1	40%
Exposed	0	0	0	0	0	0	0	0	0	0			0	0%
Equipment Malfunction	0	0	0	0	0	0	0	0	0	0			0	0%
Framing- PD	0	0	0	0	0	0	0	0	0	0			0	0%
Framing of Car	0	0	0	0	1	0	0	0	0	0			1	30%
Framing of Driver	0	0	0	0	0	0	0	0	0	0			0	0%
Operator Error	0	0	0	0	0	0	0	0	0	0			0	0%
Framing of Plate	0	0	0	0	0	0	0	0	0	0			0	0%
Reject Expired	0	0	0	0	0	0	0	0	0	0			0	0%
Speed Not Determined	0	0	0	0	0	0	0	0	0	0			0	0%
Total:	0	1	2	1	2	0	0	1	3	0			3	100%
Summary Metrics														
Daily Average Vehicle Passes	0	0	0	0	0	0	0	0	0	0			0	
Average Issued Speed	19	23	21	19	16	17	21	20	17	19			19	
Average Issued Red Seconds	0.4	109.5	0.7	18.4	0.2	0.7	0.4	0.6	0.7	0.5			13.2	
Citation / Violation Issuance Rate	80%	33%	22%	36%	14%	46%	22%	29%	6%	21%			31%	
Controllable Issuance Rate	100%	86%	67%	83%	50%	100%	100%	83%	25%	100%			79%	



Los Angeles County MTA Expo Line
 Approach Summary Report
 Location 5137: EB to SB Exposition @ Crenshaw



Events	Jan-18	Feb-18	Mar-18	Apr-18	May-18	Jun-18	Jul-18	Aug-18	Sep-18	Oct-18	Nov-18	Dec-18	Year to Date Monthly Average	
													Quantity	%
Non-Violations	482	390	479	434	403	253	177	248	37	0			323	99%
Violations	4	4	7	6	6	3	2	5	0	0			5	1%
Total:	486	394	486	440	409	256	179	253	37	0			327	100%
Violations														
Uncontrollable Non-Issued	0	1	0	3	1	1	0	0	0	0			2	21%
Controllable Non-Issued	3	3	1	0	4	2	2	5	0	0			3	40%
Citations	1	0	6	3	1	0	0	0	0	0			3	39%
Total:	4	4	7	6	6	3	2	5	0	0			7	61%
Non-Violations														
Emergency Vehicle Non-Issuable	0	0	0	0	0	0	0	0	0	0			0	0%
Emergency Vehicle PD	0	0	0	0	0	0	0	0	0	0			0	0%
Intersection Control in Progress- PD	0	0	0	0	0	0	0	0	0	0			0	0%
Gate Down/ No Train	0	0	0	0	0	0	0	0	0	0			0	0%
No Violation Occurred	460	377	460	411	379	236	164	227	31	0			305	95%
Rear Axle Activation	0	0	0	0	0	0	0	0	0	0			0	0%
Right Turn- No Violation	0	0	0	0	0	0	0	0	0	0			0	0%
Test Shot	22	13	19	23	24	17	13	21	6	0			18	5%
Train Activation	0	0	0	0	0	0	0	0	0	0			0	0%
Amber Time Low	0	0	0	0	0	0	0	0	0	0			0	0%
Vehicle Stopped- PD	0	0	0	0	0	0	0	0	0	0			0	0%
Total:	482	390	479	434	403	253	177	248	37	0			323	100%
Uncontrollable Non-Issued Violations														
Administrative Dismissal	0	0	0	0	0	0	0	0	0	0			0	0%
Address/CDL/DOB Match Fail	0	0	0	0	0	0	0	0	0	0			0	0%
Car Obstructed	0	0	0	0	0	0	0	0	0	0			0	0%
Conditions Beyond Control	0	0	0	0	0	0	0	0	0	0			0	0%
Driver Identity Unclear	0	0	0	0	0	0	0	0	0	0			0	0%
Driver Obstructed	0	0	0	0	0	0	0	0	0	0			0	0%
Exposed	0	0	0	0	0	0	0	0	0	0			0	0%
Emergency Vehicle Issue	0	0	0	0	0	0	0	0	0	0			0	0%
Glare on Plate	0	0	0	0	0	0	0	0	0	0			0	0%
Glare on Windshield	0	0	0	0	0	0	0	0	0	0			0	0%
Illegible Plate	0	0	0	0	0	0	0	0	0	0			0	0%
Interest of Justice- PD	0	0	0	0	0	0	0	0	0	0			0	0%
Image Quality- PD	0	0	0	0	0	0	0	0	0	0			0	0%
Issuance Criteria Not Met- PD	0	0	0	0	0	0	0	0	0	0			0	0%
No Warning Sign	0	0	0	0	0	0	0	0	0	0			0	0%
No Plate	0	0	0	1	0	1	0	0	0	0			1	25%
No Speed Captured	0	0	0	0	0	0	0	0	0	0			0	0%
Obstruction In Photo- PD	0	0	0	1	0	0	0	0	0	0			1	25%
Out of State	0	1	0	1	0	0	0	0	0	0			1	25%
Plate Obstructed	0	0	0	0	1	0	0	0	0	0			1	25%
Short Yellow- PD	0	0	0	0	0	0	0	0	0	0			0	0%
Third Party Damage	0	0	0	0	0	0	0	0	0	0			0	0%
TSB Expired	0	0	0	0	0	0	0	0	0	0			0	0%
TSB No Hit	0	0	0	0	0	0	0	0	0	0			0	0%
Total:	0	1	0	3	1	1	0	0	0	0			4	100%
Controllable Non-Issued Violations														
Conduent Expire	0	0	0	0	0	0	0	0	0	0			0	0%
Clarity of Plate	0	0	0	0	0	0	0	0	0	0			0	0%
Clarity of Driver	0	0	0	0	0	0	0	0	0	0			0	0%
Dark Interior	0	0	0	0	0	0	0	0	0	0			0	0%
Data Box Related- PD	0	0	0	0	0	0	0	0	0	0			0	0%
Data Box Data Error- PD	0	0	0	0	2	0	0	0	0	0			2	26%
Data Entry Error	3	3	0	0	2	0	1	2	0	0			2	29%
Exposed	0	0	0	0	0	0	0	0	0	0			0	0%
Equipment Malfunction	0	0	0	0	0	2	0	3	0	0			3	32%
Framing- PD	0	0	0	0	0	0	0	0	0	0			0	0%
Framing of Car	0	0	1	0	0	0	1	0	0	0			1	13%
Framing of Driver	0	0	0	0	0	0	0	0	0	0			0	0%
Operator Error	0	0	0	0	0	0	0	0	0	0			0	0%
Framing of Plate	0	0	0	0	0	0	0	0	0	0			0	0%
Reject Expired	0	0	0	0	0	0	0	0	0	0			0	0%
Speed Not Determined	0	0	0	0	0	0	0	0	0	0			0	0%
Total:	3	3	1	0	4	2	2	5	0	0			8	100%
Summary Metrics														
Daily Average Vehicle Passes	0	0	0	0	0	0	0	0	0	0			0	
Average Issued Speed	20	0	24	21	15	0	0	14	0	0			19	
Average Issued Red Seconds	47.6	0.0	9.9	36.7	5.9	0.0	0.0	0.2	0.0	0			20.1	
Citation / Violation Issuance Rate	25%	0%	86%	50%	17%	0%	0%	0%	0%	0%			44%	
Controllable Issuance Rate	25%	0%	86%	100%	20%	0%	0%	0%	0%	0%			58%	



**Los Angeles County MTA Expo Line
Monthly Citation Yield - By Location
October 2018**

Direction	Location	Code	Movement	Days of Enforcement	Events	Violations	Citations	Yield*
SB to EB	Flower @ Washintgon	5008	Left	31	662	18	10	0.32
SB to WB	Flower @ USC Trade Tech	5018	Left	31	837	8	5	0.16
SB to EB	Flower @ 23rd	5028	Left	31	1,217	7	4	0.13
SB to EB	Flower @ Adams	5038	Left	31	618	15	0	0.00
SB to EB	Flower @ 28th	5048	Left	31	345	199	79	2.55
SB to EB	Flower @ 30th	5058	Left	31	1,132	5	3	0.10
SB to EB	Flower @ Jefferson	5068	Left	31	1,023	27	15	0.48
EB to NB	Exposition @ Watt	5077	Left	31	264	12	5	0.16
WB to SB	Exposition @ Bill Robertson	5079	Left	31	340	11	7	0.23
EB to NB	Exposition @ Vermont	5087	Left	31	1,093	147	25	0.81
WB to SB	Exposition @ Vermont	5089	Left	31	747	42	12	0.39
EB to NB	Exposition @ Raymond	5097	Left	31	293	15	4	0.13
EB to NB	Exposition @ Normandie	5107	Left	31	699	279	145	4.68
WB to SB	Exposition @ Normandie	5109	Left	31	923	82	38	1.23
EB to NB	Exposition @ Halldale	5117	Left	31	473	52	21	0.68
WB to SB	Exposition @ Denker	5119	Left	31	486	90	60	1.94
EB to NB	Exposition @ Western	5127	Left	31	560	158	94	3.03
WB to SB	Exposition @ Western	5129	Left	31	572	24	5	0.16
EB to SB	Exposition @ Crenshaw	5137	Right	0	0	0	0	NA
Totals				29	12,284	1,191	532	18.11

*Yield is the number of citations issued per day of enforcement.