



Expo Line Monthly Report



Metro

Los Angeles County
Metropolitan Transportation Authority

December 2019

CONDUENT



Prepared by: Conduent State and Local Solutions
Confidential

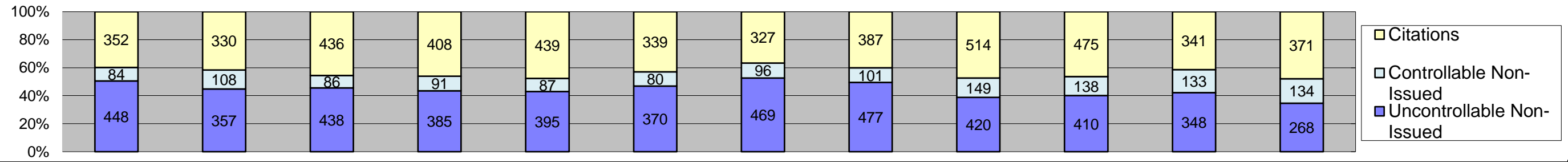


Table of Contents

Report Title	Page
<i>Approach Summary Report, All Locations.....</i>	3
<i>Approach Summary Report, Location 5008: SB to EB Flower @ Washington.....</i>	4
<i>Approach Summary Report, Location 5018: SB to WB Flower @ USC Trade Tech.....</i>	5
<i>Approach Summary Report, Location 5028: SB to EB Flower @ 23rd.....</i>	6
<i>Approach Summary Report, Location 5038: SB to EB Flower @ Adams.....</i>	7
<i>Approach Summary Report, Location 5048: SB to EB Flower @ 28th St.....</i>	8
<i>Approach Summary Report, Location 5058: Sb to EB Flower @ 30th St.....</i>	9
<i>Approach Summary Report, Location 5068: SB to EB Flower @ Jefferson.....</i>	10
<i>Approach Summary Report, Location 5077: EB to NB Exposition @ Watt.....</i>	11
<i>Approach Summary Report, Location 5079: WB to SB Exposition @ Bill Robertson.....</i>	12
<i>Approach Summary Report, Location 5087: EB to NB Exposition @ Vermont.....</i>	13
<i>Approach Summary Report, Location 5089: WB to SB Exposition @ Vermont.....</i>	14
<i>Approach Summary Report, Location 5097: EB to NB Exposition @ Raymond.....</i>	15
<i>Approach Summary Report, Location 5107: EB to NB Exposition @ Normandie.....</i>	16
<i>Approach Summary Report, Location 5109: WB to SB Exposition @ Normandie.....</i>	17
<i>Approach Summary Report, Location 5117: EB to NB Exposition @ Halldale.....</i>	18
<i>Approach Summary Report, Location 5119 WB to SB Exposition @ Denker.....</i>	19
<i>Approach Summary Report, Location 5127: EB to NB Exposition @ Western.....</i>	20
<i>Approach Summary Report, Location 5129: WB to SB Exposition @ Western.....</i>	21
<i>Approach Summary Report, Location 5137: EB to SB Exposition @ Crenshaw.....</i>	22
<i>Monthly Citation Yield Report.....</i>	23



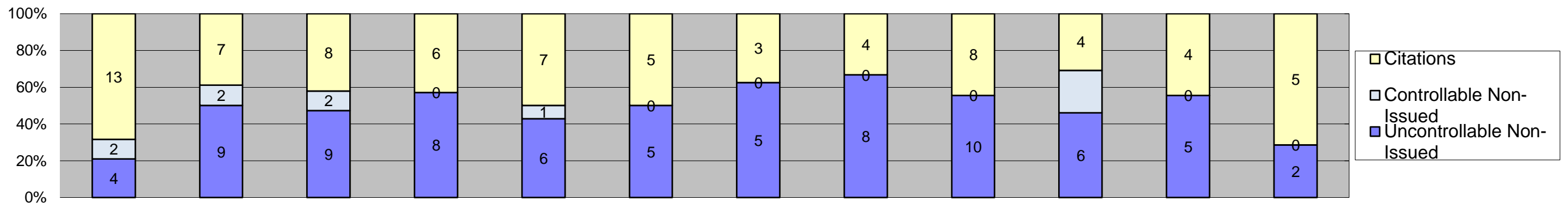
Los Angeles County MTA Expo Line
Approach Summary Report
All Locations
2019



Events	Jan-19	Feb-19	Mar-19	Apr-19	May-19	Jun-19	Jul-19	Aug-19	Sep-19	Oct-19	Nov-19	Dec-19	Year to Date Monthly Average	
													Quantity	%
Non-Violations	13,534	13,233	13,912	14,057	13,431	12,455	12,657	12,096	10,979	11,891	10,878	9,994	12,426	93%
Violations	884	795	960	884	921	789	892	965	1,083	1,023	822	773	899	7%
Total:	14,418	14,028	14,872	14,941	14,352	13,244	13,549	13,061	12,062	12,914	11,700	10,767	13,326	100%
Violations														
Uncontrollable Non-Issued	448	357	438	385	395	370	469	477	420	410	348	268	399	44%
Controllable Non-Issued	84	108	86	91	87	80	96	101	149	138	133	134	107	12%
Citations	352	330	436	408	439	339	327	387	514	475	341	371	393	44%
Total:	884	795	960	884	921	789	892	965	1,083	1,023	822	773	899	56%
Non-Violations														
Emergency Vehicle Non-Issuable	28	16	8	7	11	7	13	10	13	7	7	10	11	0%
Emergency Vehicle PD	0	0	0	0	2	0	0	0	1	0	0	0	2	0%
Intersection Control in Progress-PD	0	0	1	2	0	1	1	0	0	1	0	0	1	0%
Gate Down/ No Train	0	0	0	0	0	0	0	0	0	0	0	0	0	0%
No Violation Occurred	7,795	6,632	7,413	7,367	7,048	6,358	6,553	6,034	5,388	5,994	5,272	4,662	6,376	51%
Rear Axle Activation	99	121	231	232	192	169	206	241	219	188	166	160	185	1%
Right Turn- No Violation	0	0	0	0	0	0	0	0	0	0	0	0	0	0%
Test Shot	2,308	3,448	2,956	3,048	2,551	2,612	2,763	2,552	2,249	2,360	2,202	2,093	2,595	21%
Train Activation	3,299	3,011	3,302	3,399	3,627	3,307	3,118	3,259	3,109	3,340	3,231	3,069	3,256	26%
Amber Time Low	4	0	0	0	0	0	1	0	0	0	0	0	3	0%
Vehicle Stopped- PD	1	5	1	2	0	1	2	0	0	1	0	0	2	0%
Total:	13,534	13,233	13,912	14,057	13,431	12,455	12,657	12,096	10,979	11,891	10,878	9,994	12,431	100%
Uncontrollable Non-Issued Violations														
Administrative Dismissal	0	0	0	0	0	0	0	0	0	0	0	0	0	0%
Address/CDL/DOB Match Fail	0	0	3	49	3	20	1	0	0	0	0	0	15	4%
Car Obstructed	3	7	3	6	11	10	9	11	12	7	9	4	8	2%
Conditions Beyond Control	0	1	0	0	0	0	0	0	0	0	0	0	1	0%
Driver Identity Unclear	0	11	12	3	3	5	1	6	10	7	3	1	6	1%
Driver Obstructed	49	38	43	44	43	33	43	47	37	43	40	34	41	10%
Exposed	0	0	0	0	0	0	0	0	0	0	0	0	0	0%
Emergency Vehicle Issue	6	0	0	0	2	10	8	7	0	3	4	2	5	1%
Glare on Plate	99	80	67	56	65	52	78	71	61	67	55	30	65	16%
Glare on Windshield	62	41	51	49	55	80	111	81	68	80	63	68	67	16%
Illegible Plate	1	0	1	1	1	1	1	1	7	3	6	5	3	1%
Interest of Justice- PD	0	0	0	0	0	1	0	0	1	0	0	0	1	0%
Image Quality- PD	6	6	3	10	1	0	2	3	5	0	0	0	5	1%
Issuance Criteria Not Met- PD	0	0	0	0	0	0	0	1	0	0	0	0	1	0%
No Warning Sign	0	0	0	0	0	0	0	0	0	0	0	0	0	0%
No Plate	152	96	146	122	121	101	126	137	106	110	88	63	114	27%
No Speed Captured	0	0	0	0	0	0	0	0	0	0	0	0	0	0%
Obstruction In Photo- PD	8	5	14	8	7	0	7	8	10	3	2	6	7	2%
Out of State	9	10	18	18	14	17	16	19	23	12	14	4	15	3%
Plate Obstructed	15	11	12	11	18	8	13	22	16	17	15	12	14	3%
Short Yellow- PD	0	0	0	0	0	0	1	0	0	0	0	0	1	0%
Third Party Damage	0	0	0	0	0	0	0	0	0	0	0	0	0	0%
TSB Epired	0	0	0	0	0	0	2	0	0	0	2	0	2	0%
TSB No Hit	38	51	65	8	51	32	50	63	64	58	47	39	47	11%
Total:	448	357	438	385	395	370	469	477	420	410	348	268	417	100%
Controllable Non-Issued Violations														
Conduent Expire	0	0	0	0	0	0	0	0	0	0	0	0	0	0%
Clarity of Plate	0	0	0	0	0	0	0	0	0	0	0	0	0	0%
Clarity of Driver	0	0	0	0	0	0	0	0	0	0	0	0	0	0%
Dark Interior	48	72	50	42	47	49	64	67	85	84	77	92	65	57%
Data Box Related- PD	0	0	0	0	0	0	0	0	0	0	0	0	0	0%
Data Box Data Error- PD	0	0	0	0	0	0	0	0	0	0	0	0	0	0%
Data Entry Error	6	6	6	6	4	0	5	8	15	12	10	2	7	6%
Exposed	0	0	0	0	0	0	0	0	0	0	0	0	0	0%
Equipment Malfunction	5	0	2	3	0	0	0	1	3	2	10	3	4	3%
Framing- PD	0	0	0	0	0	0	0	0	0	0	0	0	0	0%
Framing of Car	25	29	28	38	25	31	27	25	46	39	36	33	32	28%
Framing of Driver	0	0	0	0	0	0	0	0	0	0	0	2	2	2%
Operator Error	0	0	0	0	0	0	0	0	0	0	0	0	0	0%
Framing of Plate	0	1	0	2	11	0	0	0	0	1	0	2	3	3%
Reject Expired	0	0	0	0	0	0	0	0	0	0	0	0	0	0%
Speed Not Determined	0	0	0	0	0	0	0	0	0	0	0	0	0	0%
Total:	84	108	86	91	87	80	96	101	149	138	133	134	113	100%
Summary Metrics														
Daily Average Vehicle Passes	0	0	0	0	0	0	0	0	0	0	0	0	0	0
Average Issued Speed	360	334	325	352	346	324	336	351	342	339	307	314	336	336
Average Issued Red Seconds	651	435	505	629	317	380	408	1,364	279	449	838	327	548.5	548.5
Citation / Violation Issuance Rate	40%	42%	45%	46%	48%	43%	37%	40%	0	0	0	0	44%	44%
Controllable Issuance Rate	81%	75%	84%	82%	83%	81%	77%	79%	78%	77%	72%	73%	79%	79%



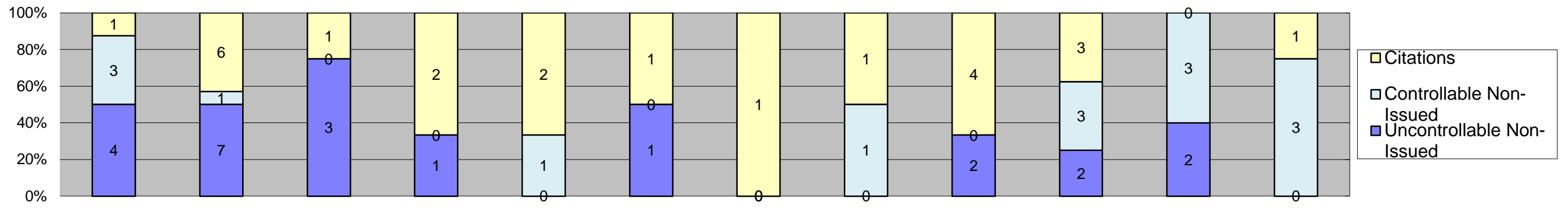
**Los Angeles County MTA Expo Line
Approach Summary Report
Location 5008: SB to EB Flower @ Washington**



Events	Jan-19	Feb-19	Mar-19	Apr-19	May-19	Jun-19	Jul-19	Aug-19	Sep-19	Oct-19	Nov-19	Dec-19	Year to Date Monthly Average	
	Quantity												%	
Non-Violations	391	373	457	481	454	314	170	213	344	314	321	329	347	96%
Violations	19	18	19	14	14	10	8	12	18	13	9	7	13	4%
Total:	410	391	476	495	468	324	178	225	362	327	330	336	360	100%
Violations														
Uncontrollable Non-Issued	4	9	9	8	6	5	5	8	10	6	5	2	6	44%
Controllable Non-Issued	2	2	2	0	1	0	0	0	0	3	0	0	2	14%
Citations	13	7	8	6	7	5	3	4	8	4	4	5	6	42%
Total:	19	18	19	14	14	10	8	12	18	13	9	7	15	58%
Non-Violations														
Emergency Vehicle Non-Issuable	0	0	0	1	0	0	0	0	0	0	0	1	1	0%
Emergency Vehicle PD	0	0	0	0	0	0	0	0	0	0	0	0	0	0%
Intersection Control in Progress- PD	0	0	0	0	0	0	0	0	0	0	0	0	0	0%
Gate Down/ No Train	0	0	0	0	0	0	0	0	0	0	0	0	0	0%
No Violation Occurred	103	112	105	77	74	48	52	44	85	81	65	64	76	21%
Rear Axle Activation	6	15	22	27	14	18	13	17	13	8	9	7	14	4%
Right Turn- No Violation	0	0	0	0	0	0	0	0	0	0	0	0	0	0%
Test Shot	121	108	121	117	114	99	105	105	108	104	98	99	108	30%
Train Activation	161	138	209	259	252	149	0	47	138	121	149	158	162	45%
Amber Time Low	0	0	0	0	0	0	0	0	0	0	0	0	0	0%
Vehicle Stopped- PD	0	0	0	0	0	0	0	0	0	0	0	0	0	0%
Total:	391	373	457	481	454	314	170	213	344	314	321	329	361	100%
Uncontrollable Non-Issued Violations														
Administrative Dismissal	0	0	0	0	0	0	0	0	0	0	0	0	0	0%
Address/CDL/DOB Match Fail	0	0	0	1	0	0	0	0	0	0	0	0	1	6%
Car Obstructed	0	0	0	0	0	0	0	3	0	0	0	0	3	18%
Conditions Beyond Control	0	0	0	0	0	0	0	0	0	0	0	0	0	0%
Driver Identity Unclear	0	0	0	0	0	0	0	1	0	0	0	0	1	6%
Driver Obstructed	0	2	0	0	0	0	1	0	0	0	0	0	2	9%
Exposed	0	0	0	0	0	0	0	0	0	0	0	0	0	0%
Emergency Vehicle Issue	0	0	0	0	0	0	0	0	0	0	0	0	0	0%
Glare on Plate	1	0	1	1	0	2	0	1	2	2	3	0	2	10%
Glare on Windshield	0	1	1	0	1	1	0	1	0	0	0	0	1	6%
Illegible Plate	0	0	0	0	0	0	0	0	0	0	0	0	0	0%
Interest of Justice- PD	0	0	0	0	0	0	0	0	0	0	0	0	0	0%
Image Quality- PD	0	0	1	1	0	0	0	0	0	0	0	0	1	6%
Issuance Criteria Not Met- PD	0	0	0	0	0	0	0	0	0	0	0	0	0	0%
No Warning Sign	0	0	0	0	0	0	0	0	0	0	0	0	0	0%
No Plate	2	3	3	5	4	2	4	2	6	4	1	1	3	18%
No Speed Captured	0	0	0	0	0	0	0	0	0	0	0	0	0	0%
Obstruction In Photo- PD	0	0	0	0	0	0	0	0	0	0	0	0	0	0%
Out of State	0	1	1	0	0	0	0	0	2	0	0	0	1	8%
Plate Obstructed	0	0	1	0	0	0	0	0	0	0	0	0	1	6%
Short Yellow- PD	0	0	0	0	0	0	0	0	0	0	0	0	0	0%
Third Party Damage	0	0	0	0	0	0	0	0	0	0	0	0	0	0%
TSB Epired	0	0	0	0	0	0	0	0	0	0	0	0	0	0%
TSB No Hit	1	2	1	0	1	0	0	0	0	0	1	1	1	7%
Total:	4	9	9	8	6	5	5	8	10	6	5	2	17	100%
Controllable Non-Issued Violations														
Conduent Expire	0	0	0	0	0	0	0	0	0	0	0	0	0	0%
Clarity of Plate	0	0	0	0	0	0	0	0	0	0	0	0	0	0%
Clarity of Driver	0	0	0	0	0	0	0	0	0	0	0	0	0	0%
Dark Interior	1	1	0	0	0	0	0	0	0	0	0	0	1	38%
Data Box Related- PD	0	0	0	0	0	0	0	0	0	0	0	0	0	0%
Data Box Data Error- PD	0	0	0	0	0	0	0	0	0	0	0	0	0	0%
Data Entry Error	0	0	0	0	0	0	0	0	0	0	0	0	0	0%
Exposed	0	0	0	0	0	0	0	0	0	0	0	0	0	0%
Equipment Malfunction	0	0	0	0	0	0	0	0	0	0	0	0	0	0%
Framing- PD	0	0	0	0	0	0	0	0	0	0	0	0	0	0%
Framing of Car	1	1	2	0	1	0	0	0	0	3	0	0	2	62%
Framing of Driver	0	0	0	0	0	0	0	0	0	0	0	0	0	0%
Operator Error	0	0	0	0	0	0	0	0	0	0	0	0	0	0%
Framing of Plate	0	0	0	0	0	0	0	0	0	0	0	0	0	0%
Reject Expired	0	0	0	0	0	0	0	0	0	0	0	0	0	0%
Speed Not Determined	0	0	0	0	0	0	0	0	0	0	0	0	0	0%
Total:	2	2	2	0	1	0	0	0	0	3	0	0	3	100%
Summary Metrics													Year to Date Monthly Average	
Daily Average Vehicle Passes	0	0	0	0	0	0	0	0	0	0	0	0	0	
Average Issued Speed	22	21	19	19	22	19	22	24	19	18	22	21	21	
Average Issued Red Seconds	0.6	0.4	0.5	147.0	5.3	8.8	0.3	0.9	0.4	0.9	6.0	0.6	14.3	
Citation / Violation Issuance Rate	68%	39%	42%	43%	50%	50%	38%	33%	44%	31%	44%	71%	46%	
Controllable Issuance Rate	87%	78%	80%	100%	88%	100%	100%	100%	100%	57%	100%	100%	91%	



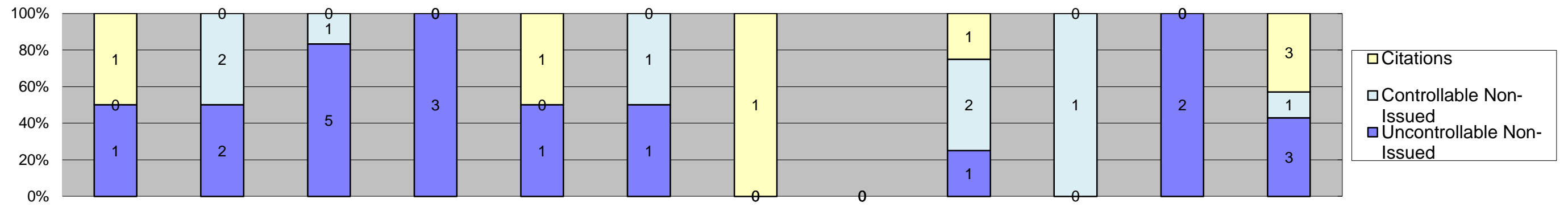
**Los Angeles County MTA Expo Line
Approach Summary Report
Location 5018: SB to WB Flower @ USC Trade Tech**



Events	Jan-19	Feb-19	Mar-19	Apr-19	May-19	Jun-19	Jul-19	Aug-19	Sep-19	Oct-19	Nov-19	Dec-19	Year to Date Monthly Average	
													Quantity	%
Non-Violations	2,802	3,088	1,930	2,366	2,497	1,994	1,743	1,734	1,564	1,799	1,602	1,199	2,027	100%
Violations	8	14	4	3	3	2	1	2	6	8	5	4	5	0%
Total:	2,810	3,102	1,934	2,369	2,500	1,996	1,744	1,736	1,570	1,807	1,607	1,203	2,032	100%
Violations														
Uncontrollable Non-Issued	4	7	3	1	0	1	0	0	2	2	2	0	3	39%
Controllable Non-Issued	3	1	0	0	1	0	0	1	0	3	3	3	2	31%
Citations	1	6	1	2	2	1	1	1	4	3	0	1	2	30%
Total:	8	14	4	3	3	2	1	2	6	8	5	4	7	70%
Non-Violations														
Emergency Vehicle Non-Issuable	1	0	0	0	0	1	0	0	0	0	0	0	1	0%
Emergency Vehicle PD	0	0	0	0	0	0	0	0	0	0	0	0	0	0%
Intersection Control in Progress- PD	0	0	0	0	0	0	0	0	0	0	0	0	0	0%
Gate Down/ No Train	0	0	0	0	0	0	0	0	0	0	0	0	0	0%
No Violation Occurred	2,298	1,402	905	1,191	1,809	1,335	1,188	1,511	1,018	1,258	1,025	655	1,300	64%
Rear Axle Activation	1	1	0	0	0	3	0	0	1	1	2	1	1	0%
Right Turn- No Violation	0	0	0	0	0	0	0	0	0	0	0	0	0	0%
Test Shot	172	1,341	727	801	254	399	552	133	110	118	129	104	403	20%
Train Activation	330	344	298	374	434	256	3	90	435	422	446	439	323	16%
Amber Time Low	0	0	0	0	0	0	0	0	0	0	0	0	0	0%
Vehicle Stopped- PD	0	0	0	0	0	0	0	0	0	0	0	0	0	0%
Total:	2,802	3,088	1,930	2,366	2,497	1,994	1,743	1,734	1,564	1,799	1,602	1,199	2,028	100%
Uncontrollable Non-Issued Violations														
Administrative Dismissal	0	0	0	0	0	0	0	0	0	0	0	0	0	0%
Address/CDL/DOB Match Fail	0	0	0	0	0	0	0	0	0	0	0	0	0	0%
Car Obstructed	0	0	0	0	0	0	0	0	0	0	0	0	0	0%
Conditions Beyond Control	0	0	0	0	0	0	0	0	0	0	0	0	0	0%
Driver Identity Unclear	0	2	0	0	0	0	0	0	0	0	0	0	2	19%
Driver Obstructed	0	0	2	0	0	0	0	0	1	0	0	0	2	15%
Exposed	0	0	0	0	0	0	0	0	0	0	0	0	0	0%
Emergency Vehicle Issue	0	0	0	0	0	0	0	0	0	0	1	0	1	10%
Glare on Plate	0	0	0	0	0	0	0	0	0	0	0	0	0	0%
Glare on Windshield	0	0	0	0	0	0	0	0	0	0	0	0	0	0%
Illegible Plate	0	0	0	0	0	0	0	0	0	0	0	0	0	0%
Interest of Justice- PD	0	0	0	0	0	0	0	0	0	0	0	0	0	0%
Image Quality- PD	0	0	0	0	0	0	0	0	0	0	0	0	0	0%
Issuance Criteria Not Met- PD	0	0	0	0	0	0	0	0	0	0	0	0	0	0%
No Warning Sign	0	0	0	0	0	0	0	0	0	0	0	0	0	0%
No Plate	4	3	1	1	0	1	0	0	1	0	0	0	2	18%
No Speed Captured	0	0	0	0	0	0	0	0	0	0	0	0	0	0%
Obstruction In Photo- PD	0	0	0	0	0	0	0	0	0	0	1	0	1	10%
Out of State	0	1	0	0	0	0	0	0	0	0	0	0	1	10%
Plate Obstructed	0	0	0	0	0	0	0	0	0	1	0	0	1	10%
Short Yellow- PD	0	0	0	0	0	0	0	0	0	0	0	0	0	0%
Third Party Damage	0	0	0	0	0	0	0	0	0	0	0	0	0	0%
TSB Epired	0	0	0	0	0	0	0	0	0	0	0	0	0	0%
TSB No Hit	0	1	0	0	0	0	0	0	0	1	0	0	1	10%
Total:	4	7	3	1	0	1	0	0	2	2	2	0	10	100%
Controllable Non-Issued Violations														
Conduent Expire	0	0	0	0	0	0	0	0	0	0	0	0	0	0%
Clarity of Plate	0	0	0	0	0	0	0	0	0	0	0	0	0	0%
Clarity of Driver	0	0	0	0	0	0	0	0	0	0	0	0	0	0%
Dark Interior	3	1	0	0	0	0	0	1	0	3	1	2	2	38%
Data Box Related- PD	0	0	0	0	0	0	0	0	0	0	0	0	0	0%
Data Box Data Error- PD	0	0	0	0	0	0	0	0	0	0	0	0	0	0%
Data Entry Error	0	0	0	0	0	0	0	0	0	0	1	0	1	21%
Exposed	0	0	0	0	0	0	0	0	0	0	0	0	0	0%
Equipment Malfunction	0	0	0	0	0	0	0	0	0	0	1	1	1	21%
Framing- PD	0	0	0	0	0	0	0	0	0	0	0	0	0	0%
Framing of Car	0	0	0	0	1	0	0	0	0	0	0	0	1	21%
Framing of Driver	0	0	0	0	0	0	0	0	0	0	0	0	0	0%
Operator Error	0	0	0	0	0	0	0	0	0	0	0	0	0	0%
Framing of Plate	0	0	0	0	0	0	0	0	0	0	0	0	0	0%
Reject Expired	0	0	0	0	0	0	0	0	0	0	0	0	0	0%
Speed Not Determined	0	0	0	0	0	0	0	0	0	0	0	0	0	0%
Total:	3	1	0	0	1	0	0	1	0	3	3	3	5	100%
Summary Metrics													Year to Date Monthly Average	
Daily Average Vehicle Passes	0	0	0	0	0	0	0	0	0	0	0	0	0	
Average Issued Speed	17	19	24	18	18	19	15	17	21	18	19	21	19	
Average Issued Red Seconds	30.4	4.6	0.5	0.4	33.4	0.2	96.2	8.7	7.4	41.4	512.0	0.7	61.3	
Citation / Violation Issuance Rate	13%	43%	25%	67%	67%	50%	100%	50%	67%	38%	0%	25%	49%	
Controllable Issuance Rate	25%	86%	100%	100%	67%	100%	100%	50%	100%	50%	0%	25%	73%	



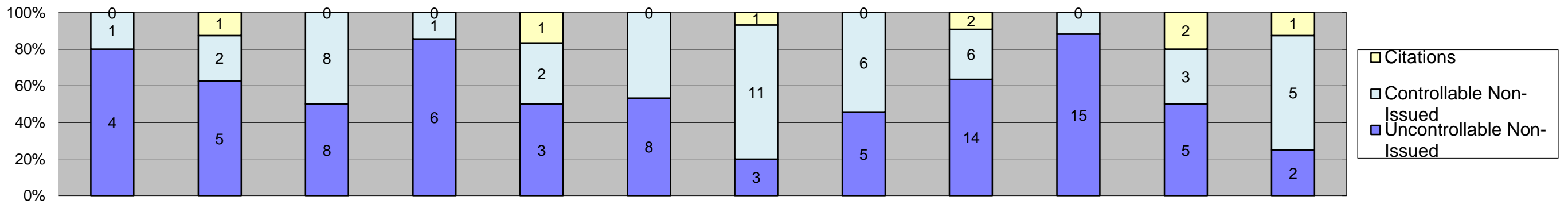
Los Angeles County MTA Expo Line
Approach Summary Report
Location 5028: SB to EB Flower @ 23rd



Events	Jan-19	Feb-19	Mar-19	Apr-19	May-19	Jun-19	Jul-19	Aug-19	Sep-19	Oct-19	Nov-19	Dec-19	Year to Date Monthly Average	
	Quantity	Quantity	Quantity	Quantity	Quantity	Quantity	Quantity	Quantity	Quantity	Quantity	Quantity	Quantity	Quantity	%
Non-Violations	998	960	1,127	1,056	1,070	1,242	1,586	1,577	1,140	1,202	913	804	1,140	100%
Violations	2	4	6	3	2	2	1	0	4	1	2	7	3	0%
Total:	1,000	964	1,133	1,059	1,072	1,244	1,587	1,577	1,144	1,203	915	811	1,143	100%
Violations														
Uncontrollable Non-Issued	1	2	5	3	1	1	0	0	1	0	2	3	2	44%
Controllable Non-Issued	0	2	1	0	0	1	0	0	2	1	0	1	1	28%
Citations	1	0	0	0	1	0	1	0	1	0	0	3	1	29%
Total:	2	4	6	3	2	2	1	0	4	1	2	7	5	71%
Non-Violations														
Emergency Vehicle Non-Issuable	0	3	0	0	0	0	0	0	0	0	2	1	2	0%
Emergency Vehicle PD	0	0	0	0	0	0	0	0	0	0	0	0	0	0%
Intersection Control in Progress- PD	0	0	0	0	0	0	0	0	0	0	0	0	0	0%
Gate Down/ No Train	0	0	0	0	0	0	0	0	0	0	0	0	0	0%
No Violation Occurred	691	691	815	762	778	976	1,428	1,398	832	893	613	554	869	76%
Rear Axle Activation	0	0	0	0	0	0	0	0	0	0	0	0	0	0%
Right Turn- No Violation	0	0	0	0	0	0	0	0	0	0	0	0	0	0%
Test Shot	121	105	111	116	116	128	136	138	118	119	118	109	120	10%
Train Activation	186	161	201	178	176	138	22	41	190	190	180	140	150	13%
Amber Time Low	0	0	0	0	0	0	0	0	0	0	0	0	0	0%
Vehicle Stopped- PD	0	0	0	0	0	0	0	0	0	0	0	0	0	0%
Total:	998	960	1,127	1,056	1,070	1,242	1,586	1,577	1,140	1,202	913	804	1,141	100%
Uncontrollable Non-Issued Violations														
Administrative Dismissal	0	0	0	0	0	0	0	0	0	0	0	0	0	0%
Address/CDL/DOB Match Fail	0	0	0	0	0	0	0	0	0	0	0	0	0	0%
Car Obstructed	0	0	0	0	0	0	0	0	0	0	1	0	1	14%
Conditions Beyond Control	0	0	0	0	0	0	0	0	0	0	0	0	0	0%
Driver Identity Unclear	0	0	0	0	0	0	0	0	0	0	0	0	0	0%
Driver Obstructed	0	0	0	0	0	0	0	0	0	0	0	0	0	0%
Exposed	0	0	0	0	0	0	0	0	0	0	0	0	0	0%
Emergency Vehicle Issue	0	0	0	0	0	0	0	0	0	0	0	0	0	0%
Glare on Plate	0	0	0	0	0	0	0	0	0	0	1	0	1	14%
Glare on Windshield	0	0	2	2	0	1	0	0	0	0	0	0	2	23%
Illegible Plate	0	0	0	0	0	0	0	0	0	0	0	0	0	0%
Interest of Justice- PD	0	0	0	0	0	0	0	0	0	0	0	0	0	0%
Image Quality- PD	0	0	0	0	0	0	0	0	0	0	0	0	0	0%
Issuance Criteria Not Met- PD	0	0	0	0	0	0	0	0	0	0	0	0	0	0%
No Warning Sign	0	0	0	0	0	0	0	0	0	0	0	0	0	0%
No Plate	1	1	2	0	1	0	0	0	1	0	0	3	2	21%
No Speed Captured	0	0	0	0	0	0	0	0	0	0	0	0	0	0%
Obstruction In Photo- PD	0	1	0	0	0	0	0	0	0	0	0	0	1	14%
Out of State	0	0	1	1	0	0	0	0	0	0	0	0	1	14%
Plate Obstructed	0	0	0	0	0	0	0	0	0	0	0	0	0	0%
Short Yellow- PD	0	0	0	0	0	0	0	0	0	0	0	0	0	0%
Third Party Damage	0	0	0	0	0	0	0	0	0	0	0	0	0	0%
TSB Epired	0	0	0	0	0	0	0	0	0	0	0	0	0	0%
TSB No Hit	0	0	0	0	0	0	0	0	0	0	0	0	0	0%
Total:	1	2	5	3	1	1	0	0	1	0	2	3	7	100%
Controllable Non-Issued Violations														
Conduent Expire	0	0	0	0	0	0	0	0	0	0	0	0	0	0%
Clarity of Plate	0	0	0	0	0	0	0	0	0	0	0	0	0	0%
Clarity of Driver	0	0	0	0	0	0	0	0	0	0	0	0	0	0%
Dark Interior	0	1	1	0	0	1	0	0	2	1	0	1	1	54%
Data Box Related- PD	0	0	0	0	0	0	0	0	0	0	0	0	0	0%
Data Box Data Error- PD	0	0	0	0	0	0	0	0	0	0	0	0	0	0%
Data Entry Error	0	0	0	0	0	0	0	0	0	0	0	0	0	0%
Exposed	0	0	0	0	0	0	0	0	0	0	0	0	0	0%
Equipment Malfunction	0	0	0	0	0	0	0	0	0	0	0	0	0	0%
Framing- PD	0	0	0	0	0	0	0	0	0	0	0	0	0	0%
Framing of Car	0	1	0	0	0	0	0	0	0	0	0	0	1	46%
Framing of Driver	0	0	0	0	0	0	0	0	0	0	0	0	0	0%
Operator Error	0	0	0	0	0	0	0	0	0	0	0	0	0	0%
Framing of Plate	0	0	0	0	0	0	0	0	0	0	0	0	0	0%
Reject Expired	0	0	0	0	0	0	0	0	0	0	0	0	0	0%
Speed Not Determined	0	0	0	0	0	0	0	0	0	0	0	0	0	0%
Total:	0	2	1	0	0	1	0	0	2	1	0	1	2	100%
Summary Metrics														
Daily Average Vehicle Passes	0	0	0	0	0	0	0	0	0	0	0	0	0	0
Average Issued Speed	21	14	0	0	17	0	0	0	14	0	0	18	17	
Average Issued Red Seconds	0.7	0.3	0.0	0.0	57.6	0.0	0.0	0.0	107.2	0.0	0.0	71.6	47.5	
Citation / Violation Issuance Rate	50%	0%	0%	0%	50%	0%	100%	0%	25%	0%	0%	43%	54%	
Controllable Issuance Rate	100%	0%	0%	0%	100%	0%	100%	0%	33%	0%	0%	75%	82%	



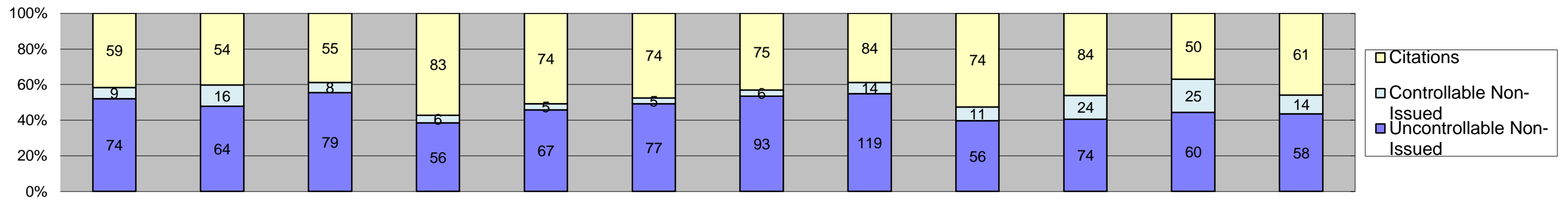
Los Angeles County MTA Expo Line
Approach Summary Report
Location 5038: SB to EB Flower @ Adams



Events	Jan-19	Feb-19	Mar-19	Apr-19	May-19	Jun-19	Jul-19	Aug-19	Sep-19	Oct-19	Nov-19	Dec-19	Year to Date Monthly Average	
	Quantity	Quantity	Quantity	Quantity	Quantity	Quantity	Quantity	Quantity	Quantity	Quantity	Quantity	Quantity	Quantity	%
Non-Violations	393	426	457	590	550	489	423	484	498	550	575	435	489	98%
Violations	5	8	16	7	6	15	15	11	22	17	10	8	12	2%
Total:	398	434	473	597	556	504	438	495	520	567	585	443	501	100%
Violations														
Uncontrollable Non-Issued	4	5	8	6	3	8	3	5	14	15	5	2	7	53%
Controllable Non-Issued	1	2	8	1	2	7	11	6	6	2	3	5	5	36%
Citations	0	1	0	0	1	0	1	0	2	0	2	1	1	11%
Total:	5	8	16	7	6	15	15	11	22	17	10	8	12	89%
Non-Violations														
Emergency Vehicle Non-Issuable	2	0	0	1	2	0	0	1	1	1	0	1	1	0%
Emergency Vehicle PD	0	0	0	0	0	0	0	0	0	0	0	0	0	0%
Intersection Control in Progress- PD	0	0	0	0	0	0	0	0	0	0	0	0	0	0%
Gate Down/ No Train	0	0	0	0	0	0	0	0	0	0	0	0	0	0%
No Violation Occurred	368	391	399	493	455	404	356	403	434	480	497	383	422	86%
Rear Axle Activation	1	4	12	13	11	1	1	1	4	1	0	1	5	1%
Right Turn- No Violation	0	0	0	0	0	0	0	0	0	0	0	0	0	0%
Test Shot	1	5	18	42	44	62	44	43	43	45	38	33	35	7%
Train Activation	20	26	28	41	38	22	21	36	16	23	40	17	27	6%
Amber Time Low	1	0	0	0	0	0	1	0	0	0	0	0	1	0%
Vehicle Stopped- PD	0	0	0	0	0	0	0	0	0	0	0	0	0	0%
Total:	393	426	457	590	550	489	423	484	498	550	575	435	491	100%
Uncontrollable Non-Issued Violations														
Administrative Dismissal	0	0	0	0	0	0	0	0	0	0	0	0	0	0%
Address/CDL/DOB Match Fail	0	0	0	0	0	0	0	0	0	0	0	0	0	0%
Car Obstructed	0	0	0	0	0	0	0	1	2	2	1	0	2	11%
Conditions Beyond Control	0	0	0	0	0	0	0	0	0	0	0	0	0	0%
Driver Identity Unclear	0	0	0	0	0	0	0	0	1	0	0	0	1	7%
Driver Obstructed	2	3	5	5	3	6	1	2	6	5	0	0	4	28%
Exposed	0	0	0	0	0	0	0	0	0	0	0	0	0	0%
Emergency Vehicle Issue	0	0	0	0	0	0	0	1	0	1	0	0	1	7%
Glare on Plate	0	0	0	0	0	0	1	0	0	0	1	0	1	7%
Glare on Windshield	0	2	1	0	0	1	1	0	2	7	2	2	2	16%
Illegible Plate	0	0	0	0	0	0	0	0	0	0	0	0	0	0%
Interest of Justice- PD	0	0	0	0	0	0	0	0	0	0	0	0	0	0%
Image Quality- PD	0	0	0	0	0	0	0	0	0	0	0	0	0	0%
Issuance Criteria Not Met- PD	0	0	0	0	0	0	0	0	0	0	0	0	0	0%
No Warning Sign	0	0	0	0	0	0	0	0	0	0	0	0	0	0%
No Plate	0	0	1	0	0	0	0	0	0	0	0	0	1	7%
No Speed Captured	0	0	0	0	0	0	0	0	0	0	0	0	0	0%
Obstruction In Photo- PD	0	0	0	0	0	0	0	0	0	0	0	0	0	0%
Out of State	1	0	0	1	0	1	0	1	2	0	1	0	1	9%
Plate Obstructed	0	0	0	0	0	0	0	0	0	0	0	0	0	0%
Short Yellow- PD	0	0	0	0	0	0	0	0	0	0	0	0	0	0%
Third Party Damage	0	0	0	0	0	0	0	0	0	0	0	0	0	0%
TSB Epired	0	0	0	0	0	0	0	0	0	0	0	0	0	0%
TSB No Hit	1	0	1	0	0	0	0	0	1	0	0	0	1	7%
Total:	4	5	8	6	3	8	3	5	14	15	5	2	14	100%
Controllable Non-Issued Violations														
Conduent Expire	0	0	0	0	0	0	0	0	0	0	0	0	0	0%
Clarity of Plate	0	0	0	0	0	0	0	0	0	0	0	0	0	0%
Clarity of Driver	0	0	0	0	0	0	0	0	0	0	0	0	0	0%
Dark Interior	1	2	8	1	2	7	10	6	6	2	3	4	4	68%
Data Box Related- PD	0	0	0	0	0	0	0	0	0	0	0	0	0	0%
Data Box Data Error- PD	0	0	0	0	0	0	0	0	0	0	0	0	0	0%
Data Entry Error	0	0	0	0	0	0	0	0	0	0	0	0	0	0%
Exposed	0	0	0	0	0	0	0	0	0	0	0	0	0	0%
Equipment Malfunction	0	0	0	0	0	0	0	0	0	0	0	0	0	0%
Framing- PD	0	0	0	0	0	0	0	0	0	0	0	0	0	0%
Framing of Car	0	0	0	0	0	0	1	0	0	0	0	0	1	16%
Framing of Driver	0	0	0	0	0	0	0	0	0	0	0	1	1	16%
Operator Error	0	0	0	0	0	0	0	0	0	0	0	0	0	0%
Framing of Plate	0	0	0	0	0	0	0	0	0	0	0	0	0	0%
Reject Expired	0	0	0	0	0	0	0	0	0	0	0	0	0	0%
Speed Not Determined	0	0	0	0	0	0	0	0	0	0	0	0	0	0%
Total:	1	2	8	1	2	7	11	6	6	2	3	5	6	100%
Summary Metrics													Year to Date Monthly Average	
Daily Average Vehicle Passes	0	0	0	0	0	0	0	0	0	0	0	0	0	0
Average Issued Speed	15	14	14	48	15	0	0	14	18	15	15	0	19	19
Average Issued Red Seconds	329.1	222.3	102.6	315.3	94.7	0.0	0.0	1023.9	28.5	55.6	126.8	0.0	255.4	255.4
Citation / Violation Issuance Rate	0%	13%	0%	0%	17%	0%	7%	0%	9%	0%	20%	13%	13%	13%
Controllable Issuance Rate	0%	33%	0%	0%	33%	0%	8%	0%	25%	0%	40%	17%	26%	26%



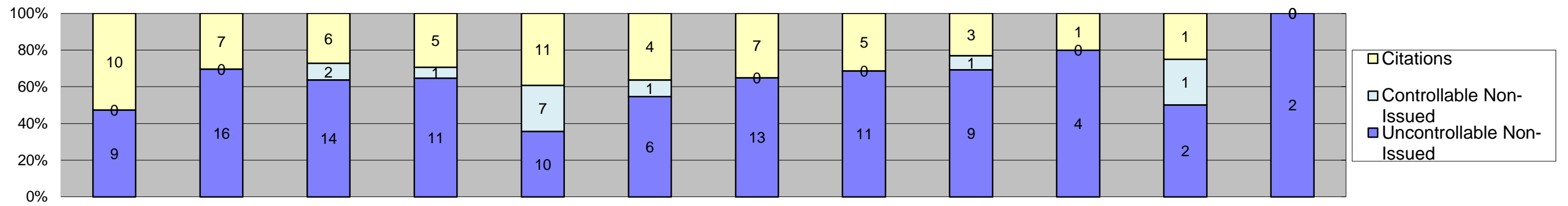
Los Angeles County MTA Expo Line
Approach Summary Report
Location 5048: SB to EB Flower at 28th



Events	Jan-19	Feb-19	Mar-19	Apr-19	May-19	Jun-19	Jul-19	Aug-19	Sep-19	Oct-19	Nov-19	Dec-19	Year to Date Monthly Average	
													Quantity	%
Non-Violations	146	137	161	154	169	146	155	147	123	144	146	130	147	49%
Violations	142	134	142	145	146	156	174	217	141	182	135	133	154	51%
Total:	288	271	303	299	315	302	329	364	264	326	281	263	300	100%
Violations														
Uncontrollable Non-Issued	74	64	79	56	67	77	93	119	56	74	60	58	73	47%
Controllable Non-Issued	9	16	8	6	5	5	6	14	11	24	25	14	12	8%
Citations	59	54	55	83	74	74	75	84	74	84	50	61	69	45%
Total:	142	134	142	145	146	156	174	217	141	182	135	133	154	55%
Non-Violations														
Emergency Vehicle Non-Issuable	0	0	1	0	1	0	1	0	0	0	0	0	1	1%
Emergency Vehicle PD	0	0	0	0	1	0	0	0	0	0	0	0	1	1%
Intersection Control in Progress- PD	0	0	0	0	0	1	1	0	0	1	0	0	1	1%
Gate Down/ No Train	0	0	0	0	0	0	0	0	0	0	0	0	0	0%
No Violation Occurred	11	9	11	14	16	5	13	8	12	9	14	4	11	7%
Rear Axle Activation	7	9	23	21	19	23	20	20	17	24	20	19	19	12%
Right Turn- No Violation	0	0	0	0	0	0	0	0	0	0	0	0	0	0%
Test Shot	123	116	124	116	130	113	116	116	93	106	112	105	114	76%
Train Activation	5	0	2	2	2	4	3	3	1	4	0	2	3	2%
Amber Time Low	0	0	0	0	0	0	0	0	0	0	0	0	0	0%
Vehicle Stopped- PD	0	3	0	1	0	0	1	0	0	0	0	0	2	1%
Total:	146	137	161	154	169	146	155	147	123	144	146	130	151	100%
Uncontrollable Non-Issued Violations														
Administrative Dismissal	0	0	0	0	0	0	0	0	0	0	0	0	0	0%
Address/CDL/DOB Match Fail	0	0	0	5	1	8	1	0	0	0	0	0	4	5%
Car Obstructed	1	0	0	0	1	0	0	1	0	0	0	0	1	1%
Conditions Beyond Control	0	0	0	0	0	0	0	0	0	0	0	0	0	0%
Driver Identity Unclear	0	4	1	1	1	2	0	1	1	1	0	1	1	2%
Driver Obstructed	23	20	15	16	20	17	27	28	12	18	23	25	20	25%
Exposed	0	0	0	0	0	0	0	0	0	0	0	0	0	0%
Emergency Vehicle Issue	0	0	0	0	0	1	1	0	0	0	0	0	1	1%
Glare on Plate	3	3	8	3	2	1	3	5	5	3	5	4	4	5%
Glare on Windshield	4	4	9	3	5	10	16	13	6	7	5	3	7	9%
Illegible Plate	0	0	0	0	0	0	0	0	1	0	0	0	1	1%
Interest of Justice- PD	0	0	0	0	0	1	0	0	0	0	0	0	1	1%
Image Quality- PD	1	2	1	2	0	0	1	0	1	0	0	0	1	2%
Issuance Criteria Not Met- PD	0	0	0	0	0	0	0	0	0	0	0	0	0	0%
No Warning Sign	0	0	0	0	0	0	0	0	0	0	0	0	0	0%
No Plate	32	22	26	21	23	31	27	48	13	29	15	16	25	31%
No Speed Captured	0	0	0	0	0	0	0	0	0	0	0	0	0	0%
Obstruction In Photo- PD	3	1	5	2	4	0	3	5	3	0	0	2	3	4%
Out of State	1	0	3	3	1	0	1	1	2	4	0	1	2	2%
Plate Obstructed	2	2	3	0	4	3	4	4	5	5	3	1	3	4%
Short Yellow- PD	0	0	0	0	0	0	0	0	0	0	0	0	0	0%
Third Party Damage	0	0	0	0	0	0	0	0	0	0	0	0	0	0%
TSB Epired	0	0	0	0	0	0	0	0	0	0	0	0	0	0%
TSB No Hit	4	6	8	0	5	3	9	13	7	7	9	5	7	8%
Total:	74	64	79	56	67	77	93	119	56	74	60	58	82	100%
Controllable Non-Issued Violations														
Conduent Expire	0	0	0	0	0	0	0	0	0	0	0	0	0	0%
Clarity of Plate	0	0	0	0	0	0	0	0	0	0	0	0	0	0%
Clarity of Driver	0	0	0	0	0	0	0	0	0	0	0	0	0	0%
Dark Interior	9	13	8	5	3	5	5	12	11	21	19	12	10	69%
Data Box Related- PD	0	0	0	0	0	0	0	0	0	0	0	0	0	0%
Data Box Data Error- PD	0	0	0	0	0	0	0	0	0	0	0	0	0	0%
Data Entry Error	0	2	0	0	1	0	1	1	0	1	4	1	2	11%
Exposed	0	0	0	0	0	0	0	0	0	0	0	0	0	0%
Equipment Malfunction	0	0	0	0	0	0	0	0	0	1	1	0	1	7%
Framing- PD	0	0	0	0	0	0	0	0	0	0	0	0	0	0%
Framing of Car	0	1	0	1	0	0	0	1	0	1	1	1	1	7%
Framing of Driver	0	0	0	0	0	0	0	0	0	0	0	0	0	0%
Operator Error	0	0	0	0	0	0	0	0	0	0	0	0	0	0%
Framing of Plate	0	0	0	0	1	0	0	0	0	0	0	0	1	7%
Reject Expired	0	0	0	0	0	0	0	0	0	0	0	0	0	0%
Speed Not Determined	0	0	0	0	0	0	0	0	0	0	0	0	0	0%
Total:	9	16	8	6	5	5	6	14	11	24	25	14	15	100%
Summary Metrics														
Daily Average Vehicle Passes	0	0	0	0	0	0	0	0	0	0	0	0	0	0
Average Issued Speed	28	29	26	28	28	28	26	27	29	27	28	27	28	28
Average Issued Red Seconds	0.4	0.5	0.5	0.5	0.4	4.1	0.5	0.5	0.5	0.5	0.4	0.7	0.8	0.8
Citation / Violation Issuance Rate	42%	40%	39%	57%	51%	47%	43%	39%	52%	46%	37%	46%	45%	45%
Controllable Issuance Rate	87%	77%	87%	93%	94%	94%	93%	86%	87%	78%	67%	81%	85%	85%



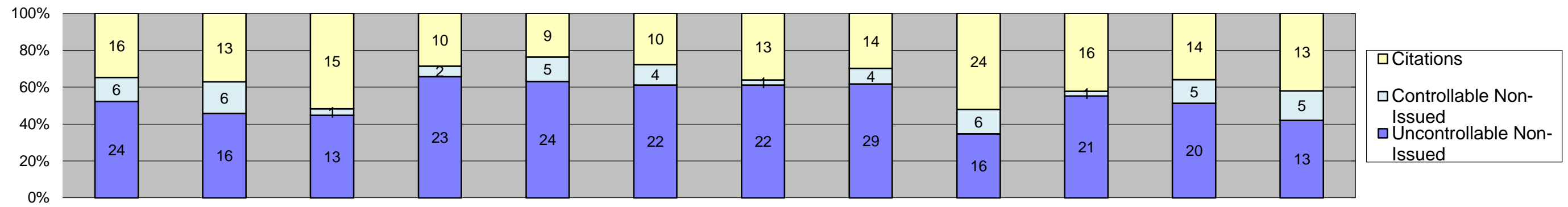
**Los Angeles County MTA Expo Line
Approach Summary Report
Location 5079: WB to SB Exposition @ Bill Robertson**



Events	Jan-19												Year to Date Monthly Average	
	Jan-19	Feb-19	Mar-19	Apr-19	May-19	Jun-19	Jul-19	Aug-19	Sep-19	Oct-19	Nov-19	Dec-19	Quantity	%
Non-Violations	265	249	303	307	300	298	350	418	350	338	286	277	312	95%
Violations	19	23	22	17	28	11	20	16	13	5	4	2	15	5%
Total:	284	272	325	324	328	309	370	434	363	343	290	279	327	100%
Violations														
Uncontrollable Non-Issued	9	16	14	11	10	6	13	11	9	4	2	2	9	54%
Controllable Non-Issued	0	0	2	1	7	1	0	0	1	0	1	0	2	13%
Citations	10	7	6	5	11	4	7	5	3	1	1	0	5	33%
Total:	19	23	22	17	28	11	20	16	13	5	4	2	17	67%
Non-Violations														
Emergency Vehicle Non-Issuable	1	1	0	0	1	0	2	1	0	0	1	0	1	0%
Emergency Vehicle PD	0	0	0	0	0	0	0	0	0	0	0	0	0	0%
Intersection Control in Progress-PD	0	0	0	0	0	0	0	0	0	0	0	0	0	0%
Gate Down/ No Train	0	0	0	0	0	0	0	0	0	0	0	0	0	0%
No Violation Occurred	53	51	65	54	53	37	45	54	51	52	59	45	52	16%
Rear Axle Activation	3	1	3	1	6	2	3	3	1	0	0	0	3	1%
Right Turn- No Violation	0	0	0	0	0	0	0	0	0	0	0	0	0	0%
Test Shot	178	152	193	220	206	235	257	328	252	243	182	199	220	70%
Train Activation	30	44	42	31	34	24	43	32	46	43	44	33	37	12%
Amber Time Low	0	0	0	0	0	0	0	0	0	0	0	0	0	0%
Vehicle Stopped- PD	0	0	0	1	0	0	0	0	0	0	0	0	1	0%
Total:	265	249	303	307	300	298	350	418	350	338	286	277	314	100%
Uncontrollable Non-Issued Violations														
Administrative Dismissal	0	0	0	0	0	0	0	0	0	0	0	0	0	0%
Address/CDL/DOB Match Fail	0	0	0	0	0	0	0	0	0	0	0	0	0	0%
Car Obstructed	0	1	0	0	0	0	0	0	0	0	0	0	1	6%
Conditions Beyond Control	0	0	0	0	0	0	0	0	0	0	0	0	0	0%
Driver Identity Unclear	0	0	0	0	0	0	0	0	0	0	0	0	0	0%
Driver Obstructed	0	0	2	2	0	0	1	1	1	1	0	1	1	7%
Exposed	0	0	0	0	0	0	0	0	0	0	0	0	0	0%
Emergency Vehicle Issue	0	0	0	0	0	0	0	0	0	0	0	0	0	0%
Glare on Plate	4	9	7	4	4	3	7	7	3	0	1	0	5	28%
Glare on Windshield	0	2	1	0	0	0	0	1	0	1	0	0	1	7%
Illegible Plate	0	0	0	0	0	0	0	0	1	0	0	0	1	6%
Interest of Justice- PD	0	0	0	0	0	0	0	0	0	0	0	0	0	0%
Image Quality- PD	0	0	0	0	0	0	0	0	0	0	0	0	0	0%
Issuance Criteria Not Met- PD	0	0	0	0	0	0	0	0	0	0	0	0	0	0%
No Warning Sign	0	0	0	0	0	0	0	0	0	0	0	0	0	0%
No Plate	5	2	3	3	4	3	2	1	1	2	0	0	3	15%
No Speed Captured	0	0	0	0	0	0	0	0	0	0	0	0	0	0%
Obstruction In Photo- PD	0	0	0	0	0	0	1	0	0	0	0	0	1	6%
Out of State	0	1	1	2	1	0	1	0	2	0	0	1	1	7%
Plate Obstructed	0	0	0	0	0	0	0	0	0	0	1	0	1	6%
Short Yellow- PD	0	0	0	0	0	0	1	0	0	0	0	0	1	6%
Third Party Damage	0	0	0	0	0	0	0	0	0	0	0	0	0	0%
TSB Epired	0	0	0	0	0	0	0	0	0	0	0	0	0	0%
TSB No Hit	0	1	0	0	1	0	0	1	1	0	0	0	1	6%
Total:	9	16	14	11	10	6	13	11	9	4	2	2	17	100%
Controllable Non-Issued Violations														
Conduent Expire	0	0	0	0	0	0	0	0	0	0	0	0	0	0%
Clarity of Plate	0	0	0	0	0	0	0	0	0	0	0	0	0	0%
Clarity of Driver	0	0	0	0	0	0	0	0	0	0	0	0	0	0%
Dark Interior	0	0	0	0	0	0	0	0	0	0	0	0	0	0%
Data Box Related- PD	0	0	0	0	0	0	0	0	0	0	0	0	0	0%
Data Box Data Error- PD	0	0	0	0	0	0	0	0	0	0	0	0	0	0%
Data Entry Error	0	0	0	0	0	0	0	0	0	0	0	0	0	0%
Exposed	0	0	0	0	0	0	0	0	0	0	0	0	0	0%
Equipment Malfunction	0	0	0	0	0	0	0	0	0	0	1	0	1	15%
Framing- PD	0	0	0	0	0	0	0	0	0	0	0	0	0	0%
Framing of Car	0	0	2	1	3	1	0	0	1	0	0	0	2	24%
Framing of Driver	0	0	0	0	0	0	0	0	0	0	0	0	0	0%
Operator Error	0	0	0	0	0	0	0	0	0	0	0	0	0	0%
Framing of Plate	0	0	0	0	4	0	0	0	0	0	0	0	4	61%
Reject Expired	0	0	0	0	0	0	0	0	0	0	0	0	0	0%
Speed Not Determined	0	0	0	0	0	0	0	0	0	0	0	0	0	0%
Total:	0	0	2	1	7	1	0	0	1	0	1	0	7	100%
Summary Metrics														
Daily Average Vehicle Passes	0	0	0	0	0	0	0	0	0	0	0	0	0	0
Average Issued Speed	15	15	15	16	15	16	15	15	15	16	0	17	15	15
Average Issued Red Seconds	13.1	0.5	0.6	0.9	0.8	0.2	0.9	0.5	0.9	86.9	0.0	59.3	15.0	15.0
Citation / Violation Issuance Rate	53%	30%	27%	29%	39%	36%	35%	31%	23%	20%	25%	0%	32%	32%
Controllable Issuance Rate	100%	100%	75%	83%	61%	80%	100%	100%	75%	100%	50%	0%	84%	84%



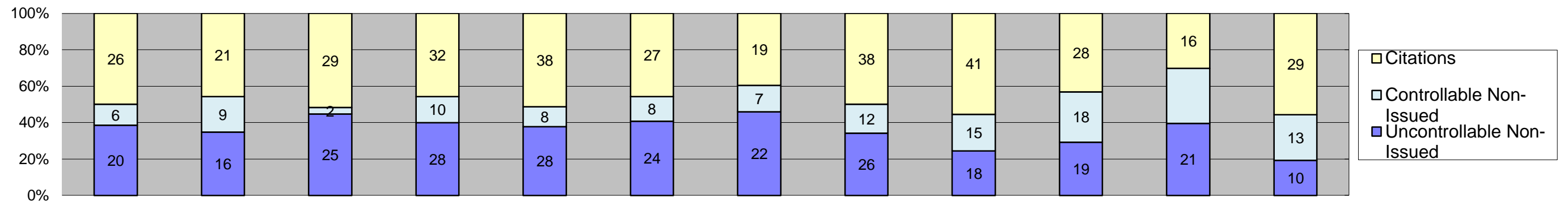
Los Angeles County MTA Expo Line Approach Summary Report Location 5089: WB to SB Exposition @ Vermont



Events	Jan-19												Year to Date Monthly Average	
													Quantity	%
Non-Violations	604	526	610	651	705	670	644	717	586	579	590	537	618	94%
Violations	46	35	29	35	38	36	36	47	46	38	39	31	38	6%
Total:	650	561	639	686	743	706	680	764	632	617	629	568	656	100%
Violations														
Uncontrollable Non-Issued	24	16	13	23	24	22	22	29	16	21	20	13	20	53%
Controllable Non-Issued	6	6	1	2	5	4	1	4	6	1	5	5	4	10%
Citations	16	13	15	10	9	10	13	14	24	16	14	13	14	37%
Total:	46	35	29	35	38	36	36	47	46	38	39	31	38	63%
Non-Violations														
Emergency Vehicle Non-Issuable	0	2	0	0	0	0	3	1	1	0	0	0	2	0%
Emergency Vehicle PD	0	0	0	0	0	0	0	0	0	0	0	0	0	0%
Intersection Control in Progress-PD	0	0	0	0	0	0	0	0	0	0	0	0	0	0%
Gate Down/ No Train	0	0	0	0	0	0	0	0	0	0	0	0	0	0%
No Violation Occurred	37	25	44	50	64	55	47	58	33	46	45	34	45	7%
Rear Axle Activation	11	15	18	23	21	18	17	21	16	19	14	27	18	3%
Right Turn- No Violation	0	0	0	0	0	0	0	0	0	0	0	0	0	0%
Test Shot	136	115	136	131	122	115	113	149	152	111	109	95	124	20%
Train Activation	420	369	412	447	498	482	464	488	384	403	422	381	431	70%
Amber Time Low	0	0	0	0	0	0	0	0	0	0	0	0	0	0%
Vehicle Stopped- PD	0	0	0	0	0	0	0	0	0	0	0	0	0	0%
Total:	604	526	610	651	705	670	644	717	586	579	590	537	619	100%
Uncontrollable Non-Issued Violations														
Administrative Dismissal	0	0	0	0	0	0	0	0	0	0	0	0	0	0%
Address/CDL/DOB Match Fail	0	0	1	3	0	2	0	0	0	0	0	0	2	7%
Car Obstructed	0	0	0	0	1	2	1	1	0	1	1	0	1	4%
Conditions Beyond Control	0	0	0	0	0	0	0	0	0	0	0	0	0	0%
Driver Identity Unclear	0	1	1	1	0	2	0	0	1	0	0	0	1	4%
Driver Obstructed	2	3	2	2	1	0	2	0	0	4	1	0	2	7%
Exposed	0	0	0	0	0	0	0	0	0	0	0	0	0	0%
Emergency Vehicle Issue	0	0	0	0	1	0	1	0	0	0	0	0	1	4%
Glare on Plate	11	5	3	6	3	6	3	4	6	5	7	4	5	18%
Glare on Windshield	2	0	1	1	4	2	5	1	1	2	0	2	2	7%
Illegible Plate	0	0	0	0	0	0	0	0	0	0	0	1	1	4%
Interest of Justice- PD	0	0	0	0	0	0	0	0	0	0	0	0	0	0%
Image Quality- PD	0	0	0	0	0	0	0	0	0	0	0	0	0	0%
Issuance Criteria Not Met- PD	0	0	0	0	0	0	0	0	0	0	0	0	0	0%
No Warning Sign	0	0	0	0	0	0	0	0	0	0	0	0	0	0%
No Plate	7	5	4	9	7	6	7	11	2	7	9	4	7	23%
No Speed Captured	0	0	0	0	0	0	0	0	0	0	0	0	0	0%
Obstruction In Photo- PD	0	0	0	0	1	0	1	0	0	0	0	0	1	4%
Out of State	1	0	0	1	0	2	1	3	2	0	1	0	2	6%
Plate Obstructed	1	1	0	0	2	0	0	2	2	1	0	1	1	5%
Short Yellow- PD	0	0	0	0	0	0	0	0	0	0	0	0	0	0%
Third Party Damage	0	0	0	0	0	0	0	0	0	0	0	0	0	0%
TSB Expired	0	0	0	0	0	0	0	0	0	0	0	0	0	0%
TSB No Hit	0	1	1	0	4	0	1	7	2	1	1	1	2	7%
Total:	24	16	13	23	24	22	22	29	16	21	20	13	28	100%
Controllable Non-Issued Violations														
Conduent Expire	0	0	0	0	0	0	0	0	0	0	0	0	0	0%
Clarity of Plate	0	0	0	0	0	0	0	0	0	0	0	0	0	0%
Clarity of Driver	0	0	0	0	0	0	0	0	0	0	0	0	0	0%
Dark Interior	3	3	1	2	2	4	0	3	6	1	4	4	3	46%
Data Box Related- PD	0	0	0	0	0	0	0	0	0	0	0	0	0	0%
Data Box Data Error- PD	0	0	0	0	0	0	0	0	0	0	0	0	0	0%
Data Entry Error	0	0	0	0	0	0	0	0	0	0	0	0	0	0%
Exposed	0	0	0	0	0	0	0	0	0	0	0	0	0	0%
Equipment Malfunction	1	0	0	0	0	0	0	1	0	0	0	0	1	15%
Framing- PD	0	0	0	0	0	0	0	0	0	0	0	0	0	0%
Framing of Car	2	2	0	0	2	0	1	0	0	0	1	1	2	23%
Framing of Driver	0	0	0	0	0	0	0	0	0	0	0	0	0	0%
Operator Error	0	0	0	0	0	0	0	0	0	0	0	0	0	0%
Framing of Plate	0	1	0	0	1	0	0	0	0	0	0	0	1	15%
Reject Expired	0	0	0	0	0	0	0	0	0	0	0	0	0	0%
Speed Not Determined	0	0	0	0	0	0	0	0	0	0	0	0	0	0%
Total:	6	6	1	2	5	4	1	4	6	1	5	5	7	100%
Summary Metrics														
Daily Average Vehicle Passes													Year to Date Monthly Average	
Average Issued Speed													19	
Average Issued Red Seconds													4.9	
Citation / Violation Issuance Rate													37%	
Controllable Issuance Rate													79%	



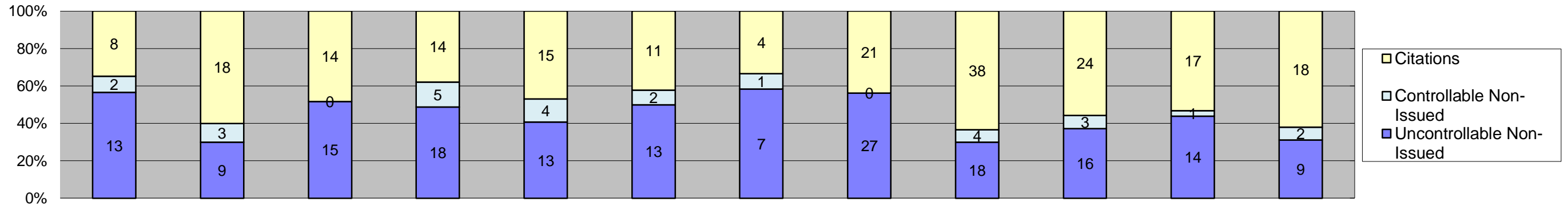
**Los Angeles County MTA Expo Line
Approach Summary Report
Location 5109: WB to SB Exposition @ Normandie**



Events	Jan-19	Feb-19	Mar-19	Apr-19	May-19	Jun-19	Jul-19	Aug-19	Sep-19	Oct-19	Nov-19	Dec-19	Year to Date Monthly Average	
													Quantity	%
Non-Violations	741	697	867	851	814	768	846	812	775	818	736	720	787	93%
Violations	52	46	56	70	74	59	48	76	74	65	53	52	60	7%
Total:	793	743	923	921	888	827	894	888	849	883	789	772	848	100%
Violations														
Uncontrollable Non-Issued	20	16	25	28	28	24	22	26	18	19	21	10	21	35%
Controllable Non-Issued	6	9	2	10	8	8	7	12	15	18	16	13	10	17%
Citations	26	21	29	32	38	27	19	38	41	28	16	29	29	47%
Total:	52	46	56	70	74	59	48	76	74	65	53	52	60	53%
Non-Violations														
Emergency Vehicle Non-Issuable	0	3	0	2	1	0	0	1	1	2	0	1	2	0%
Emergency Vehicle PD	0	0	0	0	0	0	0	0	0	0	0	0	0	0%
Intersection Control in Progress- PD	0	0	0	0	0	0	0	0	0	0	0	0	0	0%
Gate Down/ No Train	0	0	0	0	0	0	0	0	0	0	0	0	0	0%
No Violation Occurred	180	175	210	198	175	178	174	119	145	167	154	178	171	22%
Rear Axle Activation	11	14	26	30	22	25	33	45	37	20	23	20	26	3%
Right Turn- No Violation	0	0	0	0	0	0	0	0	0	0	0	0	0	0%
Test Shot	180	166	204	208	218	199	191	232	219	205	190	172	199	25%
Train Activation	370	339	427	413	398	366	448	415	373	424	369	349	391	50%
Amber Time Low	0	0	0	0	0	0	0	0	0	0	0	0	0	0%
Vehicle Stopped- PD	0	0	0	0	0	0	0	0	0	0	0	0	0	0%
Total:	741	697	867	851	814	768	846	812	775	818	736	720	788	100%
Uncontrollable Non-Issued Violations														
Administrative Dismissal	0	0	0	0	0	0	0	0	0	0	0	0	0	0%
Address/CDL/DOB Match Fail	0	0	0	7	1	1	0	0	0	0	0	0	3	10%
Car Obstructed	0	1	1	1	0	1	1	0	1	0	1	0	1	3%
Conditions Beyond Control	0	0	0	0	0	0	0	0	0	0	0	0	0	0%
Driver Identity Unclear	0	1	1	0	0	0	0	0	0	1	0	0	1	3%
Driver Obstructed	1	0	1	2	4	2	3	2	4	3	0	1	2	7%
Exposed	0	0	0	0	0	0	0	0	0	0	0	0	0	0%
Emergency Vehicle Issue	0	0	0	0	0	0	0	1	0	0	1	0	1	3%
Glare on Plate	5	0	0	2	1	0	0	1	0	1	1	0	2	6%
Glare on Windshield	1	2	1	1	4	3	2	2	2	2	3	1	2	6%
Illegible Plate	0	0	0	0	0	1	0	0	0	0	0	1	1	3%
Interest of Justice- PD	0	0	0	0	0	0	0	0	0	0	0	0	0	0%
Image Quality- PD	0	0	0	1	0	0	0	0	0	0	0	0	1	3%
Issuance Criteria Not Met- PD	0	0	0	0	0	0	0	0	0	0	0	0	0	0%
No Warning Sign	0	0	0	0	0	0	0	0	0	0	0	0	0	0%
No Plate	9	6	10	9	8	10	9	9	5	6	7	4	8	24%
No Speed Captured	0	0	0	0	0	0	0	0	0	0	0	0	0	0%
Obstruction In Photo- PD	0	1	2	0	0	0	0	0	0	0	0	1	1	4%
Out of State	0	1	2	1	1	3	1	2	1	0	2	0	2	5%
Plate Obstructed	0	1	0	3	1	0	1	3	1	3	1	1	2	5%
Short Yellow- PD	0	0	0	0	0	0	0	0	0	0	0	0	0	0%
Third Party Damage	0	0	0	0	0	0	0	0	0	0	0	0	0	0%
TSB Epired	0	0	0	0	0	0	1	0	0	0	0	0	1	3%
TSB No Hit	4	3	7	1	8	3	4	6	4	3	5	1	4	13%
Total:	20	16	25	28	28	24	22	26	18	19	21	10	31	100%
Controllable Non-Issued Violations														
Conduent Expire	0	0	0	0	0	0	0	0	0	0	0	0	0	0%
Clarity of Plate	0	0	0	0	0	0	0	0	0	0	0	0	0	0%
Clarity of Driver	0	0	0	0	0	0	0	0	0	0	0	0	0	0%
Dark Interior	2	6	2	5	4	3	5	6	8	12	6	3	5	34%
Data Box Related- PD	0	0	0	0	0	0	0	0	0	0	0	0	0	0%
Data Box Data Error- PD	0	0	0	0	0	0	0	0	0	0	0	0	0	0%
Data Entry Error	0	0	0	1	0	0	1	0	0	1	1	0	1	7%
Exposed	0	0	0	0	0	0	0	0	0	0	0	0	0	0%
Equipment Malfunction	0	0	0	0	0	0	0	0	0	0	4	0	4	27%
Framing- PD	0	0	0	0	0	0	0	0	0	0	0	0	0	0%
Framing of Car	4	3	0	4	4	5	1	6	7	5	5	10	5	33%
Framing of Driver	0	0	0	0	0	0	0	0	0	0	0	0	0	0%
Operator Error	0	0	0	0	0	0	0	0	0	0	0	0	0	0%
Framing of Plate	0	0	0	0	0	0	0	0	0	0	0	0	0	0%
Reject Expired	0	0	0	0	0	0	0	0	0	0	0	0	0	0%
Speed Not Determined	0	0	0	0	0	0	0	0	0	0	0	0	0	0%
Total:	6	9	2	10	8	8	7	12	15	18	16	13	15	100%
Summary Metrics														
Daily Average Vehicle Passes	0	0	0	0	0	0	0	0	0	0	0	0	0	
Average Issued Speed	22	21	19	21	21	21	20	21	21	20	22	21	21	
Average Issued Red Seconds	0.5	0.5	0.5	30.5	0.5	0.5	0.6	0.6	0.6	0.5	3.3	0.4	3.3	
Citation / Violation Issuance Rate	50%	46%	52%	46%	51%	46%	40%	50%	55%	43%	30%	56%	47%	
Controllable Issuance Rate	81%	70%	94%	76%	83%	77%	73%	76%	73%	61%	50%	69%	74%	



**Los Angeles County MTA Expo Line
Approach Summary Report
Location 5117: EB to NB Exposition @ Halldale**



Events	Jan-19	Feb-19	Mar-19	Apr-19	May-19	Jun-19	Jul-19	Aug-19	Sep-19	Oct-19	Nov-19	Dec-19	Year to Date Monthly Average	
	Quantity												Quantity	%
Non-Violations	443	461	447	832	389	356	336	312	292	319	269	301	396	92%
Violations	23	30	29	37	32	26	12	48	60	43	32	29	33	8%
Total:	466	491	476	869	421	382	348	360	352	362	301	330	430	100%

Violations														
Uncontrollable Non-Issued	13	9	15	18	13	13	7	27	18	16	14	9	14	42%
Controllable Non-Issued	2	3	0	5	4	2	1	0	4	3	1	2	3	8%
Citations	8	18	14	14	15	11	4	21	38	24	17	18	17	50%
Total:	23	30	29	37	32	26	12	48	60	43	32	29	34	50%

Non-Violations														
Emergency Vehicle Non-Issuable	2	1	0	0	1	1	1	0	0	1	0	0	1	0%
Emergency Vehicle PD	0	0	0	0	0	0	0	0	0	0	0	0	0	0%
Intersection Control in Progress- PD	0	0	0	0	0	0	0	0	0	0	0	0	0	0%
Gate Down/ No Train	0	0	0	0	0	0	0	0	0	0	0	0	0	0%
No Violation Occurred	242	262	294	644	165	138	144	114	113	118	91	99	202	51%
Rear Axle Activation	0	3	3	0	0	3	0	5	5	3	0	0	4	1%
Right Turn- No Violation	0	0	0	0	0	0	0	0	0	0	0	0	0	0%
Test Shot	123	102	103	120	131	121	120	107	107	122	116	119	116	29%
Train Activation	76	93	47	68	92	93	71	86	67	74	62	83	76	19%
Amber Time Low	0	0	0	0	0	0	0	0	0	0	0	0	0	0%
Vehicle Stopped- PD	0	0	0	0	0	0	0	0	0	1	0	0	1	0%
Total:	443	461	447	832	389	356	336	312	292	319	269	301	400	100%

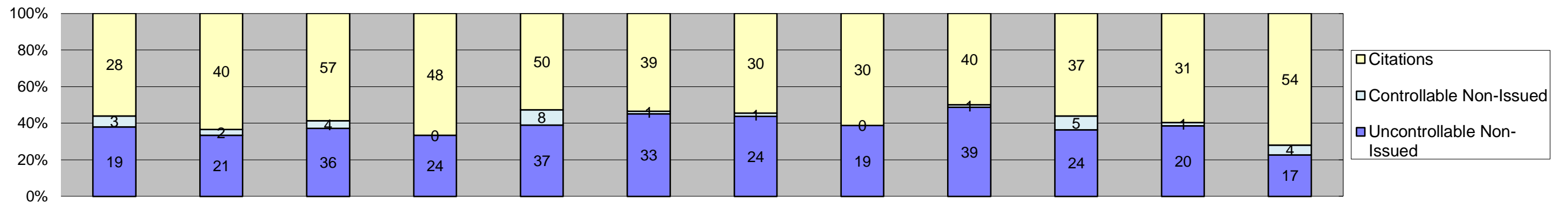
Uncontrollable Non-Issued Violations														
Administrative Dismissal	0	0	0	0	0	0	0	0	0	0	0	0	0	0%
Address/CDL/DOB Match Fail	0	0	0	1	0	0	0	0	0	0	0	0	1	4%
Car Obstructed	0	0	0	0	1	0	0	2	0	1	0	0	1	5%
Conditions Beyond Control	0	0	0	0	0	0	0	0	0	0	0	0	0	0%
Driver Identity Unclear	0	0	1	0	0	0	0	0	0	0	0	0	1	4%
Driver Obstructed	0	2	0	2	1	0	0	0	0	0	1	1	1	5%
Exposed	0	0	0	0	0	0	0	0	0	0	0	0	0	0%
Emergency Vehicle Issue	2	0	0	0	0	1	1	1	0	1	0	1	1	5%
Glare on Plate	2	1	4	3	3	3	0	3	2	4	1	0	3	10%
Glare on Windshield	1	0	0	1	0	1	1	0	1	0	0	0	1	4%
Illegible Plate	1	0	0	0	0	0	1	1	0	0	3	0	2	6%
Interest of Justice- PD	0	0	0	0	0	0	0	0	0	0	0	0	0	0%
Image Quality- PD	0	0	0	0	0	0	0	1	0	0	0	0	1	4%
Issuance Criteria Not Met- PD	0	0	0	0	0	0	0	0	0	0	0	0	0	0%
No Warning Sign	0	0	0	0	0	0	0	0	0	0	0	0	0	0%
No Plate	3	3	5	7	4	6	4	7	7	8	4	2	5	20%
No Speed Captured	0	0	0	0	0	0	0	0	0	0	0	0	0	0%
Obstruction In Photo- PD	1	0	0	1	1	0	0	0	0	0	0	1	1	4%
Out of State	0	0	0	0	0	0	0	0	1	0	1	0	1	4%
Plate Obstructed	1	1	1	3	1	1	0	5	2	0	1	1	2	7%
Short Yellow- PD	0	0	0	0	0	0	0	0	0	0	0	0	0	0%
Third Party Damage	0	0	0	0	0	0	0	0	0	0	0	0	0	0%
TSB Epired	0	0	0	0	0	0	0	0	0	0	2	0	2	8%
TSB No Hit	2	2	4	0	2	1	0	7	5	2	1	3	3	11%
Total:	13	9	15	18	13	13	7	27	18	16	14	9	26	100%

Controllable Non-Issued Violations														
Conduent Expire	0	0	0	0	0	0	0	0	0	0	0	0	0	0%
Clarity of Plate	0	0	0	0	0	0	0	0	0	0	0	0	0	0%
Clarity of Driver	0	0	0	0	0	0	0	0	0	0	0	0	0	0%
Dark Interior	1	2	0	1	2	1	1	0	2	0	1	0	1	20%
Data Box Related- PD	0	0	0	0	0	0	0	0	0	0	0	0	0	0%
Data Box Data Error- PD	0	0	0	0	0	0	0	0	0	0	0	0	0	0%
Data Entry Error	0	0	0	0	0	0	0	0	0	0	0	0	0	0%
Exposed	0	0	0	0	0	0	0	0	0	0	0	0	0	0%
Equipment Malfunction	1	0	0	3	0	0	0	0	0	0	0	0	2	29%
Framing- PD	0	0	0	0	0	0	0	0	0	0	0	0	0	0%
Framing of Car	0	1	0	0	1	1	0	0	2	3	0	1	2	22%
Framing of Driver	0	0	0	0	0	0	0	0	0	0	0	1	1	15%
Operator Error	0	0	0	0	0	0	0	0	0	0	0	0	0	0%
Framing of Plate	0	0	0	1	1	0	0	0	0	0	0	0	1	15%
Reject Expired	0	0	0	0	0	0	0	0	0	0	0	0	0	0%
Speed Not Determined	0	0	0	0	0	0	0	0	0	0	0	0	0	0%
Total:	2	3	0	5	4	2	1	0	4	3	1	2	7	100%

Summary Metrics														Year to Date Monthly Average	
Daily Average Vehicle Passes	0	0	0	0	0	0	0	0	0	0	0	0	0	0	
Average Issued Speed	17	16	17	17	18	17	18	17	17	18	18	16	17		
Average Issued Red Seconds	54.8	12.4	43.3	28.3	0.6	3.2	20.0	13.7	5.5	10.5	65.9	124.0	31.9		
Citation / Violation Issuance Rate	35%	60%	48%	38%	47%	42%	33%	44%	63%	56%	53%	62%	48%		
Controllable Issuance Rate	80%	86%	100%	74%	79%	85%	80%	100%	90%	89%	94%	90%	87%		



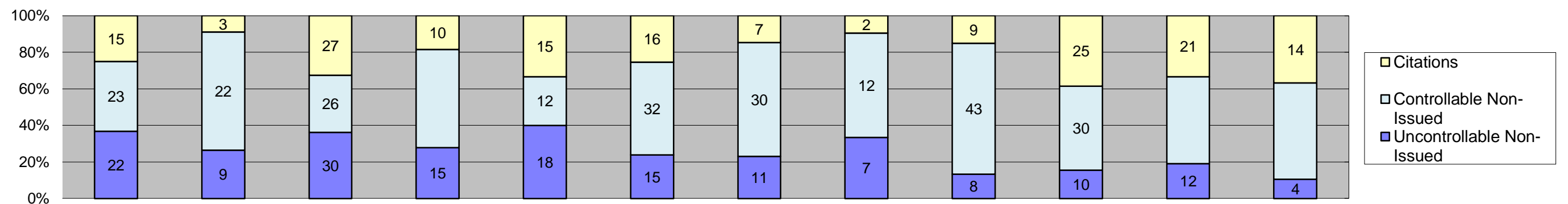
**Los Angeles County MTA Expo Line
Approach Summary Report
Location 5119: WB to SB Exposition @ Denker**



Events	Jan-19	Feb-19	Mar-19	Apr-19	May-19	Jun-19	Jul-19	Aug-19	Sep-19	Oct-19	Nov-19	Dec-19	Year to Date Monthly Average	
	Quantity												%	
Non-Violations	273	211	244	249	247	206	243	236	227	233	244	240	238	78%
Violations	50	63	97	72	95	73	55	49	80	66	52	75	69	22%
Total:	323	274	341	321	342	279	298	285	307	299	296	315	307	100%
Violations														
Uncontrollable Non-Issued	19	21	36	24	37	33	24	19	39	24	20	17	26	38%
Controllable Non-Issued	3	2	4	0	8	1	1	0	1	5	1	4	3	4%
Citations	28	40	57	48	50	39	30	30	40	37	31	54	40	58%
Total:	50	63	97	72	95	73	55	49	80	66	52	75	69	42%
Non-Violations														
Emergency Vehicle Non-Issuable	0	1	0	0	1	1	1	0	0	0	1	0	1	0%
Emergency Vehicle PD	0	0	0	0	1	0	0	0	0	0	0	0	1	0%
Intersection Control in Progress- PD	0	0	0	0	0	0	0	0	0	0	0	0	0	0%
Gate Down/ No Train	0	0	0	0	0	0	0	0	0	0	0	0	0	0%
No Violation Occurred	90	45	55	54	48	38	76	65	53	54	59	66	59	24%
Rear Axle Activation	8	9	18	16	23	15	7	15	17	14	14	9	14	6%
Right Turn- No Violation	0	0	0	0	0	0	0	0	0	0	0	0	0	0%
Test Shot	137	114	143	138	141	121	129	119	120	124	136	124	129	54%
Train Activation	38	42	28	41	33	30	30	37	37	41	34	41	36	15%
Amber Time Low	0	0	0	0	0	0	0	0	0	0	0	0	0	0%
Vehicle Stopped- PD	0	0	0	0	0	1	0	0	0	0	0	0	1	0%
Total:	273	211	244	249	247	206	243	236	227	233	244	240	240	100%
Uncontrollable Non-Issued Violations														
Administrative Dismissal	0	0	0	0	0	0	0	0	0	0	0	0	0	0%
Address/CDL/DOB Match Fail	0	0	0	10	0	2	0	0	0	0	0	0	6	15%
Car Obstructed	0	0	1	0	1	1	0	0	0	0	0	0	1	2%
Conditions Beyond Control	0	1	0	0	0	0	0	0	0	0	0	0	1	2%
Driver Identity Unclear	0	0	0	0	0	0	0	0	1	0	0	0	1	2%
Driver Obstructed	2	1	0	1	1	0	0	0	1	0	1	0	1	3%
Exposed	0	0	0	0	0	0	0	0	0	0	0	0	0	0%
Emergency Vehicle Issue	0	0	0	0	0	5	1	3	0	0	0	0	3	7%
Glare on Plate	3	4	14	6	14	6	7	6	12	8	5	1	7	18%
Glare on Windshield	0	0	0	0	0	1	0	0	0	1	0	0	1	2%
Illegible Plate	0	0	1	1	1	0	0	0	1	2	3	1	1	4%
Interest of Justice- PD	0	0	0	0	0	0	0	0	0	0	0	0	0	0%
Image Quality- PD	0	0	0	0	0	0	0	0	0	0	0	0	0	0%
Issuance Criteria Not Met- PD	0	0	0	0	0	0	0	0	0	0	0	0	0	0%
No Warning Sign	0	0	0	0	0	0	0	0	0	0	0	0	0	0%
No Plate	9	6	12	3	11	13	9	8	11	8	5	3	8	20%
No Speed Captured	0	0	0	0	0	0	0	0	0	0	0	0	0	0%
Obstruction In Photo- PD	0	0	1	0	1	0	0	0	0	0	0	0	1	2%
Out of State	0	1	0	0	2	0	1	0	2	1	0	0	1	3%
Plate Obstructed	0	1	0	2	1	1	2	0	1	0	1	5	2	4%
Short Yellow- PD	0	0	0	0	0	0	0	0	0	0	0	0	0	0%
Third Party Damage	0	0	0	0	0	0	0	0	0	0	0	0	0	0%
TSB Epired	0	0	0	0	0	0	0	0	0	0	0	0	0	0%
TSB No Hit	5	7	7	1	5	4	4	2	10	4	5	7	5	13%
Total:	19	21	36	24	37	33	24	19	39	24	20	17	40	100%
Controllable Non-Issued Violations														
Conduent Expire	0	0	0	0	0	0	0	0	0	0	0	0	0	0%
Clarity of Plate	0	0	0	0	0	0	0	0	0	0	0	0	0	0%
Clarity of Driver	0	0	0	0	0	0	0	0	0	0	0	0	0	0%
Dark Interior	2	0	1	0	2	1	0	0	1	2	0	0	2	21%
Data Box Related- PD	0	0	0	0	0	0	0	0	0	0	0	0	0	0%
Data Box Data Error- PD	0	0	0	0	0	0	0	0	0	0	0	0	0	0%
Data Entry Error	0	1	2	0	1	0	0	0	0	3	1	0	2	23%
Exposed	0	0	0	0	0	0	0	0	0	0	0	0	0	0%
Equipment Malfunction	0	0	0	0	0	0	0	0	0	0	0	1	1	14%
Framing- PD	0	0	0	0	0	0	0	0	0	0	0	0	0	0%
Framing of Car	1	1	1	0	3	0	1	0	0	0	0	2	2	21%
Framing of Driver	0	0	0	0	0	0	0	0	0	0	0	0	0	0%
Operator Error	0	0	0	0	0	0	0	0	0	0	0	0	0	0%
Framing of Plate	0	0	0	0	2	0	0	0	0	0	0	1	2	21%
Reject Expired	0	0	0	0	0	0	0	0	0	0	0	0	0	0%
Speed Not Determined	0	0	0	0	0	0	0	0	0	0	0	0	0	0%
Total:	3	2	4	0	8	1	1	0	1	5	1	4	7	100%
Summary Metrics													Year to Date Monthly Average	
Daily Average Vehicle Passes	0	0	0	0	0	0	0	0	0	0	0	0	0	0
Average Issued Speed	17	17	17	17	17	16	17	17	18	16	17	17	17	17
Average Issued Red Seconds	23.8	7.0	58.6	12.5	31.4	36.9	59.5	3.0	11.4	4.6	14.9	12.1	23.0	23.0
Citation / Violation Issuance Rate	56%	63%	59%	67%	53%	53%	55%	61%	50%	56%	60%	72%	59%	59%
Controllable Issuance Rate	90%	95%	93%	100%	86%	98%	97%	100%	98%	88%	97%	93%	95%	95%



**Los Angeles County MTA Expo Line
Approach Summary Report
Location 5137: EB to SB Exposition @ Crenshaw**



Events	Year to Date												Monthly Average	
	Jan-19	Feb-19	Mar-19	Apr-19	May-19	Jun-19	Jul-19	Aug-19	Sep-19	Oct-19	Nov-19	Dec-19	Quantity	%
Non-Violations	615	538	585	638	664	850	586	273	544	582	514	507	575	92%
Violations	60	34	83	54	45	63	48	21	60	65	63	38	53	8%
Total:	675	572	668	692	709	913	634	294	604	647	577	545	628	100%

Violations														
Uncontrollable Non-Issued	22	9	30	15	18	15	11	7	8	10	12	4	13	25%
Controllable Non-Issued	23	22	26	29	12	32	30	12	43	30	30	20	26	49%
Citations	15	3	27	10	15	16	7	2	9	25	21	14	14	26%
Total:	60	34	83	54	45	63	48	21	60	65	63	38	53	74%

Non-Violations														
Emergency Vehicle Non-Issuable	0	0	0	0	0	0	0	0	1	0	0	0	1	0%
Emergency Vehicle PD	0	0	0	0	0	0	0	0	0	0	0	0	0	0%
Intersection Control in Progress- PD	0	0	0	0	0	0	0	0	0	0	0	0	0	0%
Gate Down/ No Train	0	0	0	0	0	0	0	0	0	0	0	0	0	0%
No Violation Occurred	569	493	517	543	559	726	486	224	453	476	427	432	492	85%
Rear Axle Activation	1	0	5	5	2	0	0	0	1	1	1	2	2	0%
Right Turn- No Violation	0	0	0	0	0	0	0	0	0	0	0	0	0	0%
Test Shot	16	24	32	49	53	60	41	32	36	45	34	37	38	7%
Train Activation	29	21	31	41	50	64	59	17	53	60	52	36	43	7%
Amber Time Low	0	0	0	0	0	0	0	0	0	0	0	0	0	0%
Vehicle Stopped- PD	0	0	0	0	0	0	0	0	0	0	0	0	0	0%
Total:	615	538	585	638	664	850	586	273	544	582	514	507	576	100%

Uncontrollable Non-Issued Violations														
Administrative Dismissal	0	0	0	0	0	0	0	0	0	0	0	0	0	0%
Address/CDL/DOB Match Fail	0	0	0	1	0	0	0	0	0	0	0	0	1	4%
Car Obstructed	1	0	0	0	0	0	0	0	0	0	2	1	1	6%
Conditions Beyond Control	0	0	0	0	0	0	0	0	0	0	0	0	0	0%
Driver Identity Unclear	0	0	2	0	0	0	0	0	1	0	0	0	2	7%
Driver Obstructed	2	1	6	3	1	1	0	1	0	1	1	0	2	8%
Exposed	0	0	0	0	0	0	0	0	0	0	0	0	0	0%
Emergency Vehicle Issue	0	0	0	0	0	0	0	0	0	0	0	0	0	0%
Glare on Plate	0	0	1	0	0	0	0	0	0	0	0	0	1	4%
Glare on Windshield	10	3	9	6	8	8	6	4	2	4	0	1	6	25%
Illegible Plate	0	0	0	0	0	0	0	0	0	0	0	0	0	0%
Interest of Justice- PD	0	0	0	0	0	0	0	0	0	0	0	0	0	0%
Image Quality- PD	0	0	0	0	0	0	0	0	0	0	0	0	0	0%
Issuance Criteria Not Met- PD	0	0	0	0	0	0	0	1	0	0	0	0	1	4%
No Warning Sign	0	0	0	0	0	0	0	0	0	0	0	0	0	0%
No Plate	7	2	4	2	3	2	4	0	1	1	1	0	3	12%
No Speed Captured	0	0	0	0	0	0	0	0	0	0	0	0	0	0%
Obstruction In Photo- PD	0	0	0	0	0	0	0	0	0	0	0	1	1	4%
Out of State	1	2	5	3	3	3	1	1	2	1	4	0	2	11%
Plate Obstructed	0	0	0	0	1	0	0	0	0	0	0	0	1	4%
Short Yellow- PD	0	0	0	0	0	0	0	0	0	0	0	0	0	0%
Third Party Damage	0	0	0	0	0	0	0	0	0	0	0	0	0	0%
TSB Epired	0	0	0	0	0	0	0	0	0	0	0	0	0	0%
TSB No Hit	1	1	3	0	2	1	0	0	2	3	4	1	2	9%
Total:	22	9	30	15	18	15	11	7	8	10	12	4	22	100%

Controllable Non-Issued Violations														
Conduent Expire	0	0	0	0	0	0	0	0	0	0	0	0	0	0%
Clarity of Plate	0	0	0	0	0	0	0	0	0	0	0	0	0	0%
Clarity of Driver	0	0	0	0	0	0	0	0	0	0	0	0	0	0%
Dark Interior	7	12	10	8	8	13	19	8	13	7	7	11	10	38%
Data Box Related- PD	0	0	0	0	0	0	0	0	0	0	0	0	0	0%
Data Box Data Error- PD	0	0	0	0	0	0	0	0	0	0	0	0	0	0%
Data Entry Error	2	1	2	1	0	0	1	1	7	2	0	0	2	8%
Exposed	0	0	0	0	0	0	0	0	0	0	0	0	0	0%
Equipment Malfunction	2	0	1	0	0	0	0	0	1	1	0	0	1	5%
Framing- PD	0	0	0	0	0	0	0	0	0	0	0	0	0	0%
Framing of Car	12	9	13	20	4	19	10	3	22	20	23	9	14	50%
Framing of Driver	0	0	0	0	0	0	0	0	0	0	0	0	0	0%
Operator Error	0	0	0	0	0	0	0	0	0	0	0	0	0	0%
Framing of Plate	0	0	0	0	0	0	0	0	0	0	0	0	0	0%
Reject Expired	0	0	0	0	0	0	0	0	0	0	0	0	0	0%
Speed Not Determined	0	0	0	0	0	0	0	0	0	0	0	0	0	0%
Total:	23	22	26	29	12	32	30	12	43	30	30	20	27	100%

Summary Metrics													Year to Date Monthly Average	
Daily Average Vehicle Passes	0	0	0	0	0	0	0	0	0	0	0	0	0	
Average Issued Speed	18	16	20	18	20	15	16	20	18	16	19	17	18	
Average Issued Red Seconds	17.1	26.3	20.4	27.8	10.9	22.7	12.9	21.1	18.1	11.1	26.7	25.2	20.0	
Citation / Violation Issuance Rate	25%	9%	33%	19%	33%	25%	15%	10%	15%	38%	33%	37%	24%	
Controllable Issuance Rate	39%	12%	51%	26%	56%	33%	19%	14%	17%	45%	41%	41%	33%	



**Los Angeles County MTA Expo Line
Monthly Citation Yield - By Location
December 2019**

Direction	Location	Code	Movement	Days of Enforcement	CIR	Events	Violations	Citations	Yield*
SB to EB	Flower @ Washintgon	5008	Left	31	100%	336	7	5	0.16
SB to WB	Flower @ USC Trade Tech	5018	Left	31	25%	1,203	4	1	0.03
SB to EB	Flower @ 23rd	5028	Left	31	75%	811	7	3	0.10
SB to EB	Flower @ Adams	5038	Left	31	17%	443	8	1	0.03
SB to EB	Flower @ 28th	5048	Left	31	81%	263	133	61	1.97
SB to EB	Flower @ 30th	5058	Left	31	0%	477	1	0	0.00
SB to EB	Flower @ Jefferson	5068	Left	31	96%	973	32	23	0.74
EB to NB	Exposition @ Watt	5077	Left	31	33%	221	6	1	0.03
WB to SB	Exposition @ Bill Robertson	5079	Left	31	0%	279	2	0	0.00
EB to NB	Exposition @ Vermont	5087	Left	31	84%	957	83	26	0.84
WB to SB	Exposition @ Vermont	5089	Left	31	72%	568	31	13	0.42
EB to NB	Exposition @ Raymond	5097	Left	31	80%	100	9	4	0.13
EB to NB	Exposition @ Normandie	5107	Left	31	54%	492	157	60	1.94
WB to SB	Exposition @ Normandie	5109	Left	31	69%	772	52	29	0.94
EB to NB	Exposition @ Halldale	5117	Left	31	90%	330	29	18	0.58
WB to SB	Exposition @ Denker	5119	Left	31	93%	315	75	54	1.74
EB to NB	Exposition @ Western	5127	Left	31	92%	570	93	57	1.84
WB to SB	Exposition @ Western	5129	Left	31	100%	1,112	6	1	0.03
EB to SB	Exposition @ Crenshaw	5137	Right	31	41%	545	38	14	0.45
Totals				31		10,767	773	371	11.97

*Yield is the number of citations issued per day of enforcement.