



Orange Line Monthly Report



December 2008

expertise in action™



Prepared by: ACS Transportation Solutions
Confidential



Table of Contents

Report Title	Page
Executive Summary.....	3
Approach Summary Report, All Locations.....	5
Approach Summary Report, Location 1301: NB Tujunga Ave @ Busway.....	6
Approach Summary Report, Location 1302: SB Tujunga Ave @ Busway.....	7
Approach Summary Report, Location 1313: EB Oxnard St. @ Buffalo Ave.....	8
Approach Summary Report, Location 1314: WB Oxnard St. @ Buffalo Ave.....	9
Approach Summary Report, Location 1321: NB Woodman Ave @ Busway.....	10
Approach Summary Report, Location 1322: SB Woodman Ave @ Busway.....	11
Approach Summary Report, Location 1331: NB Kester Ave @ Busway.....	12
Approach Summary Report, Location 1332: SB Kester Ave @ Busway.....	13
Approach Summary Report, Location 1341: NB Sepulveda Blvd @ Busway.....	14
Approach Summary Report, Location 1342: SB Sepulveda Blvd @ Busway.....	15
Approach Summary Report, Location 1351: NB Woodley @ Busway.....	16
Approach Summary Report, Location 1352: SB Woodley @ Busway.....	17
Approach Summary Report, Location 1361: NB Balboa Blvd @ Busway.....	18
Approach Summary Report, Location 1362: SB Balboa Blvd @ Busway.....	19
Approach Summary Report, Location 1371: NB White Oak Ave @ Busway.....	20
Approach Summary Report, Location 1372: SB White Oak Ave @ Busway.....	21
Approach Summary Report, Location 1382: SB Lindley Ave @ Busway.....	22
Approach Summary Report, Location 1385: WB to NB Lindley Ave @ Busway.....	23
Approach Summary Report, Location 1391: NB Reseda Blvd @ Busway.....	24
Approach Summary Report, Location 1392: SB Reseda Blvd @ Busway.....	25
Approach Summary Report, Location 1402: SB Mason Ave. @ Busway.....	26
Approach Summary Report, Location 1405: WB to NB Mason Ave. @ Busway.....	27
Approach Summary Report, Location 1412: SB De Soto Ave @ Busway.....	28
Approach Summary Report, Location 1415: WB to NB De Soto Ave. @ Busway.....	29
Customer Service Report.....	30
Daily Citation Yield Report.....	31
Citations by Time (Graph).....	32
Average Red Light Seconds (Graph).....	33
Average Speed (Graph).....	34
Monthly Citation Yield Report.....	35
Disposition Summary Report.....	36
Performance Report.....	37



Executive Summary

ACS is pleased to present the monthly report for the Los Angeles County Metropolitan Transportation Authority's Photo Enforcement Services, specific to the Orange Line dedicated bus route.

In December 2008, the photo enforcement project for the MTA Orange Line captured a total of 3,759 events -- of these: 2,280 were recorded as violations and 1,479 were non-violations. A total number of 1,356 citations have been issued reflecting an issuance rate of 59% and a prosecutable issuance rate of 89%. While the total number of events is slightly lower than the previous month, the issuance rates continue to post above the 3 month average (57% and 84% respectively) and continue to illustrate our commitment to improving image quality.

We are continuing to collect data on the lens hood tests. Results are promising, but it is probable that we won't see noticeable changes until spring and the start of the warmer seasons, when we have the most issues with glare.

In the News - Photo Enforcement Around the Country

FCC Conspires To Protect Ticket Camera Corporation

December 31st, 2008

By James Baxter, NMA President

www.motorists.org

The Federal Communications Commission, in the dying days of the Republican administration, has added yet another reason to clear the decks in Washington, D.C. and start all over with a new cast of characters.

In a duplicitous, yet obvious, regulatory maneuver the FCC Enforcement Division has concocted a "Consent Decree" to protect the financial interests of the Redflex Corporation, a major supplier of ticket camera systems, and the governments that have exploited these systems to extort millions of dollars from the driving public. What follows is taken directly from the FCC Consent Decree, along with a little background and explanation.

Redflex has been using radar devices that have never been certified/approved by the Federal Communications Commission, as is required by federal law. A competitor of Redflex blew the whistle on this "oversight" (not exactly a collegial industry) and the FCC was, apparently reluctantly, forced to give the impression of enforcing its own regulations. The result of this enforcement action is a Consent Decree that FCC operatives and Redflex executives concocted, and surely assumed no one would ever read. However, it should be read by a large audience, just to understand how far astray an ethically challenged government agency can go.

There was no question that Redflex was using radar speed measuring devices that had not been certified by the FCC. There was also no question that Redflex was clearly in violation of FCC regulations. That's where the clarity fades away.

Instead of declaring Redflex in violation of federal regulations, assessing a penalty for the violation, and obtaining assurances from Redflex that it would forthwith comply with these regulations, the FCC dismissed the complaint! In exchange Redflex was required to make a "voluntary contribution" of \$22,000.00 to the US Treasury and to come into compliance with FCC regulations. Why all this double speak? Why dismiss the complaint when the violation was obvious? And why call a monetary fine a "voluntary contribution?" The answer is contained in the Consent Decree "Final Settlement."

The Final Settlement states—"The parties (Redflex and the FCC) further agree that this Consent Decree does not constitute either an adjudication on the merits or a factual or legal finding or determination regarding any compliance or noncompliance with the requirements of the Act or the Commission's Rules and Orders." This is Redflex's salvation. (In other words there was no declaration of guilt or innocence.)

If the FCC would have carried out its legitimate responsibilities, charged Redflex with violating federal regulations, regarding certification of radar speed measuring devices, and penalized Redflex accordingly, Redflex would have been competitively disadvantaged in seeking future state and local contracts.

Less obvious, but potentially more devastating, Redflex, and the governments contracting with Redflex, would quite likely be on the hook for hundreds of millions of dollars, certainly years worth of litigation. Why? It's against the law to break the law to enforce the law. Redflex has been using illegal radar guns to enforce traffic laws and to support the issuance of traffic tickets. A very plausible legal argument could be made that any ticket issued that was generated by an illegal radar gun should be dismissed and the fine refunded to the victim.

However, as loopy and disingenuous as it seems, the FCC deliberately avoided prosecution and thereby avoided an official declaration that the Redflex radar guns were illegal and should not have been used for enforcement purposes.

A moderately astute judge, one without a vested interest in past ticket camera revenues, would see through this rouse in a heartbeat. Redflex was in violation of the FCC regulation and the FCC knew it. The voluntary contribution was really just a fine. And the Consent Decree is just a house of cards constructed to protect Redflex, and its client governments. This is reminiscent of the regulatory mindset so recently prevalent in the financial industry.

Red light firm may owe Denver some green Contract clause offers credits for missed violations

By Kevin Flynn, Rocky Mountain News (www.rockymountainnews.com)

Published January 16, 2009 at 12:05 a.m.

Redflex, the company that runs Denver's red light ticket cameras, may owe the city at least \$27,900 under a disputed contract clause giving Denver a \$25 credit every time it misses a certain number of red-light runners.

The city is looking to renegotiate parts of the contract, which expires Feb. 15 and can be renewed for up to four more years without being rebid.

Denver pays Redflex of Scottsdale, Ariz., \$31,920 a month to run the system and, in return, the city's monthly ticket revenue has gone from \$6,230 in August to \$173,295 in November.

The contract had been loosely enforced until recently, when a Rocky Mountain News open records request revealed that Redflex hadn't been submitting the reports required under the contract. The Denver police did not ask for the reports until the Rocky asked for copies.

Division Chief David Quinones then demanded the information. The company delivered the documents Jan. 5 and met early this week with Quinones, Assistant City Attorney Deanne Durfee and others.

Quinones, Durfee and Redflex officials have failed to respond to repeated requests by the Rocky for comment.

Monthly tabulations

Among the items now turned in are monthly tabulations showing Redflex's system failed to achieve a minimum 98 percent "capture rate" of total red light runners. The city gets a \$25 credit for each failure below 98 percent, but no one has kept track of it until now.

A successfully "captured" incident is one in which the cameras produce clear photos and video with the driver's face and the vehicle plate clearly identifiable. Redflex and Denver police routinely toss out citations that don't meet these standards, such as an obstructed plate, sun glare or where the driver's face is hidden. These don't count as failures.

But faults such as camera positioning, unsynchronized flash units, blurry images and the like do count against the credit.

According to Redflex data submitted on Monday to the police department, the system fell below the 98 percent mark every month of operation - as low as 83 percent in August.

Redflex disputes credits

However, Redflex disputes that the contract calls for the \$25 credits. In her cover letter to Quinones last week, Jennifer Dwiggin, Redflex's operations vice president, maintained the \$25 credit for insufficient "capture rate" was tied to hours of system down-time, which has been only a tenth of a percent below 100 percent.

That claim is contradicted in the contract language, which reads: "The city shall receive a credit of \$25 per each violation detected but not captured below the capture rate. By way of example if in one month there are 970 captured violations and 1,000 detected violations, the city would receive a credit of \$250 (10 x \$25) for that month."

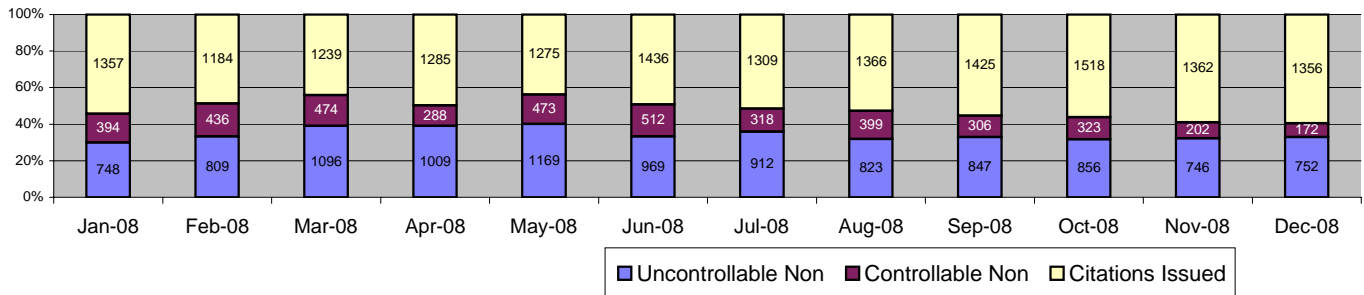
In total since June, there have been 1,116 such failed captures below the threshold, while 14,415 tickets have been mailed out through Dec. 29. Denver has until Feb. 5 to decide whether it will continue the one-year pilot program.

flynnk@RockyMountainNews.com or 303-954-5247



expertise in action™

Los Angeles County MTA Orange Line Approach Summary Report All Locations

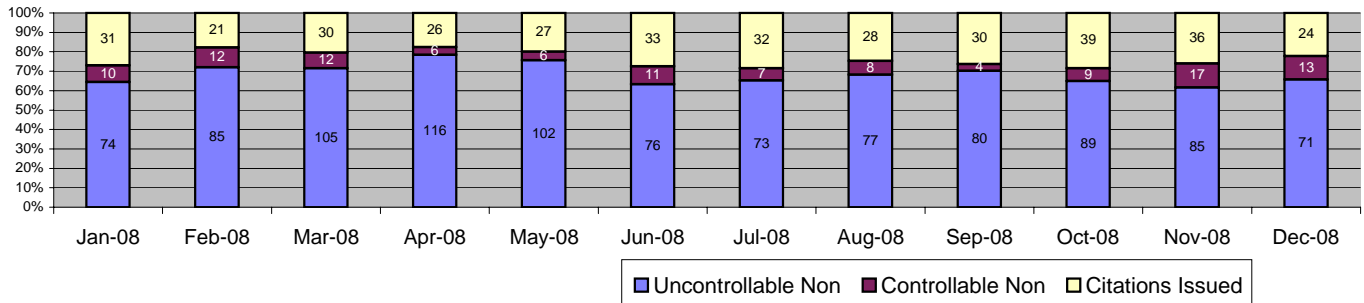


Events	Dec-08		3 Month Average		Year to Date Total		Year to Date Average		2007 Average	
	Quantity	% of Events	Quantity	% of Events	Quantity	% of Events	Quantity	% of Events	Quantity	% of Events
Non Violations	1,479	39.35%	1,689	40.05%	19,878	38.96%	1,657	38.96%	2,382	42.98%
Violations	2,280	60.65%	2,528	59.95%	31,145	61.04%	2,595	61.04%	3,160	57.02%
Total Events	3,759	100.00%	4,218	100.00%	51,023	100.00%	4,252	100.00%	5,542	100.00%
<i>Violations</i>	<i>Quantity</i>	<i>% of Viol</i>	<i>Quantity</i>	<i>% of Viol</i>	<i>Quantity</i>	<i>% of Viol</i>	<i>Quantity</i>	<i>% of Viol</i>	<i>Quantity</i>	<i>% of Viol</i>
Uncont. Non-Issued Viol	752	32.98%	816	32.29%	10,736	34.47%	895	34.47%	908	28.74%
Cont. Non-Issued Viol	172	7.54%	277	10.96%	4,297	13.80%	358	13.80%	387	12.23%
Citations	1,356	59.47%	1,435	56.76%	16,112	51.73%	1,343	51.73%	1,867	59.06%
Av. Violation Speed	22.00		29.16		38.40		38.40		24.74	
Av. Issued Speed	26.11		23.76		26.65		26.65		25.53	
Av. Violation Sec.	11.18		9.07		10.58		10.58		8.49	
Av. Issued Sec.	9.16		7.10		8.48		8.48		7.80	
Cal. Days/Enforc. Days	31	31	30	30	366	366	31	31	30	30
Daily Citation Yield	43.74	43.74	47.31	47.31	44.02	44.02	44.02	44.02	62.22	62.22
Cit /Viol. Iss. Rate	59%		57%		52%		52%		59%	
Prosecut. Iss. Rate	89%		84%		79%		79%		83%	
<i>Non - Violations</i>	<i>Quantity</i>	<i>% of Events</i>	<i>Quantity</i>	<i>% of Events</i>	<i>Quantity</i>	<i>% of Events</i>	<i>Quantity</i>	<i>% of Events</i>	<i>Quantity</i>	<i>% of Events</i>
Rear Axle Violation	9	0.24%	5	0.12%	84	0.16%	7	0.16%	7	0.12%
Right Turn	16	0.43%	22	0.53%	246	0.48%	21	0.48%	20	0.35%
No Violation Occurred	1,454	38.68%	1,662	39.41%	19,548	38.31%	1,638	38.52%	2,356	42.51%
Total Non Violations	1,479	39.35%	1,689	40.05%	19,878	38.96%	1,665	39.17%	2,382	42.98%
<i>Non - Issued</i>	<i>Quantity</i>	<i>% of Viol</i>	<i>Quantity</i>	<i>% of Viol</i>	<i>Quantity</i>	<i>% of Viol</i>	<i>Quantity</i>	<i>% of Viol</i>	<i>Quantity</i>	<i>% of Viol</i>
No Plate	254	11.14%	290	11.48%	3,451	11.08%	288	11.08%	378	11.96%
Out of State Plate	36	1.58%	44	1.75%	497	1.60%	41	1.60%	45	1.41%
Glare on Plate	26	1.14%	12	0.49%	116	0.37%	10	0.37%	13	0.42%
Illegible Plate	4	0.18%	5	0.21%	83	0.27%	7	0.27%	11	0.35%
Plate Obstructed	11	0.48%	12	0.49%	140	0.45%	12	0.45%	23	0.73%
Windshield Glare	96	4.21%	116	4.57%	2,029	6.51%	169	6.51%	29	0.92%
Driver Obstructed	12	0.53%	22	0.86%	722	2.32%	60	2.32%	5	0.16%
Car Obstructed	25	1.10%	23	0.91%	254	0.82%	21	0.82%	31	0.99%
Emergency Vehicle	99	4.34%	106	4.18%	1,274	4.09%	106	4.09%	99	3.12%
No DMV Match Found	144	6.32%	152	6.03%	1,946	6.25%	162	6.25%	254	8.02%
LASD Expired	0	0.00%	0	0.01%	75	0.24%	6	0.24%	19	0.60%
Other	45	1.97%	33	1.31%	149	0.48%	12	0.48%	2	0.05%
Total	752	32.98%	816	32.29%	10,736	34.47%	895	34.47%	908	28.74%
Framing of Plate	11	0.48%	26	1.02%	287	0.92%	24	0.92%	26	0.81%
Focus / Clarity of Plate	12	0.53%	8	0.33%	123	0.39%	10	0.39%	43	1.36%
Dark Interior	16	0.70%	22	0.86%	429	1.38%	36	1.38%	11	0.33%
Framing of Driver	3	0.13%	10	0.41%	276	0.89%	23	0.89%	4	0.13%
Focus / Clarity of Driver	13	0.57%	9	0.34%	118	0.38%	10	0.38%	8	0.27%
Framing of Car	10	0.44%	30	1.17%	222	0.71%	19	0.71%	11	0.35%
Data Error	2	0.09%	37	1.46%	980	3.15%	82	3.15%	105	3.33%
Exposure	3	0.13%	5	0.18%	45	0.14%	4	0.14%	8	0.26%
Equipment Malfunction	1	0.04%	15	0.61%	222	0.71%	19	0.71%	28	0.88%
LASD Return	97	4.25%	113	4.48%	1,561	5.01%	130	5.01%	81	2.58%
ACS Expired	4	0.18%	2	0.09%	34	0.11%	3	0.11%	61	1.92%
Total	172	7.54%	277	10.96%	4,297	13.80%	358	13.80%	386	12.21%



expertise in action™

Los Angeles County MTA Orange Line Approach Summary Report Location 1301: NB Tujunga Ave @ Busway

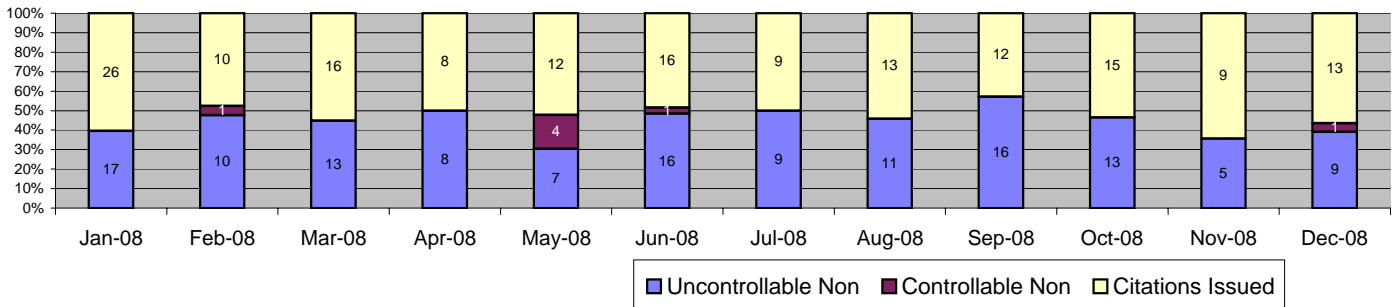


Events	Dec-08		3 Month Average		Year to Date Total		Year to Date Average		2007 Average	
	Quantity	% of Events	Quantity	% of Events	Quantity	% of Events	Quantity	% of Events	Quantity	% of Events
Non Violations	7	6.09%	7	4.05%	85	5.35%	7	5.35%	9	6.04%
Violations	108	93.91%	130	95.98%	1,505	94.65%	125	94.65%	140	93.96%
Total Events	115	100.00%	137	100.00%	1,590	100.00%	133	100.00%	149	100.00%
<i>Violations</i>	<i>Quantity</i>	<i>% of Viol</i>	<i>Quantity</i>	<i>% of Viol</i>	<i>Quantity</i>	<i>% of Viol</i>	<i>Quantity</i>	<i>% of Viol</i>	<i>Quantity</i>	<i>% of Viol</i>
Uncont. Non-Issued Viol	71	65.74%	85	65.30%	1,033	68.64%	86	68.64%	76	54.16%
Cont. Non-Issued Viol	13	12.04%	10	7.71%	115	7.64%	10	7.64%	12	8.19%
Citations	24	22.22%	35	19.33%	357	23.72%	30	23.72%	53	37.86%
Av. Violation Speed	19.45		20.17		20.18		20.18		20.11	
Av. Issued Speed	19.04		19.56		19.41		19.41		19.64	
Av. Violation Sec.	13.39		10.55		11.53		11.53		12.50	
Av. Issued Sec.	10.81		8.16		8.48		8.48		9.74	
Cal. Days/Enforc. Days	31	31	30	30	366	366	31	31	30	30
Daily Citation Yield	0.77	0.77	1.15	1.15	0.98	0.98	0.98	0.98	1.74	1.74
Cit /Viol. Iss. Rate	22%		27%		24%		24%		38%	
Prosecut. Iss. Rate	65%		78%		76%		76%		82%	
<i>Non - Violations</i>	<i>Quantity</i>	<i>% of Events</i>	<i>Quantity</i>	<i>% of Events</i>	<i>Quantity</i>	<i>% of Events</i>	<i>Quantity</i>	<i>% of Events</i>	<i>Quantity</i>	<i>% of Events</i>
Rear Axle Violation	0	0.00%	0	0.00%	0	0.00%	0	0.00%	0	0.00%
Right Turn	0	0.00%	0	0.24%	1	0.06%	0	0.06%	0	0.00%
No Violation Occurred	7	6.09%	7	4.88%	84	5.28%	7	5.28%	9	5.76%
Total Non Violations	7	6.09%	7	5.12%	85	5.35%	7	5.35%	9	5.76%
<i>Non - Issued</i>	<i>Quantity</i>	<i>% of Viol</i>	<i>Quantity</i>	<i>% of Viol</i>	<i>Quantity</i>	<i>% of Viol</i>	<i>Quantity</i>	<i>% of Viol</i>	<i>Quantity</i>	<i>% of Viol</i>
No Plate	9	8.33%	11	8.23%	107	7.11%	9	7.11%	12	8.79%
Out of State Plate	0	0.00%	1	0.77%	10	0.66%	1	0.66%	2	1.19%
Glare on Plate	0	0.00%	0	0.00%	1	0.07%	0	0.07%	1	0.42%
Illegible Plate	0	0.00%	0	0.00%	5	0.33%	0	0.33%	1	0.36%
Plate Obstructed	0	0.00%	0	0.26%	3	0.20%	0	0.20%	0	0.06%
Windshield Glare	13	12.04%	15	11.83%	189	12.56%	16	12.56%	2	1.72%
Driver Obstructed	0	0.00%	3	2.31%	39	2.59%	3	2.59%	0	0.18%
Car Obstructed	0	0.00%	0	0.00%	1	0.07%	0	0.07%	0	0.18%
Emergency Vehicle	47	43.52%	49	37.79%	620	41.20%	52	41.20%	50	35.69%
No DMV Match Found	2	1.85%	5	4.11%	57	3.79%	5	3.79%	8	5.40%
LASD Expired	0	0.00%	0	0.00%	1	0.07%	0	0.07%	0	0.18%
Other	0	0.00%	0	0.00%	0	0.00%	0	0.00%	0	0.00%
Total	71	65.74%	85	65.30%	80	68.64%	86	68.64%	76	54.16%
Framing of Plate	0	0.00%	1	1.03%	10	0.66%	1	0.66%	1	1.01%
Focus / Clarity of Plate	1	0.93%	0	0.00%	3	0.20%	0	0.20%	1	0.36%
Dark Interior	1	0.93%	0	0.26%	8	0.53%	1	0.53%	0	0.24%
Framing of Driver	0	0.00%	1	0.51%	10	0.66%	1	0.66%	0	0.00%
Focus / Clarity of Driver	0	0.00%	1	1.03%	6	0.40%	1	0.40%	1	0.53%
Framing of Car	1	0.93%	0	0.00%	3	0.20%	0	0.20%	0	0.18%
Data Error	0	0.00%	0	0.00%	1	0.07%	0	0.07%	0	0.06%
Exposure	1	0.93%	0	0.00%	1	0.07%	0	0.07%	0	0.06%
Equipment Malfunction	0	0.00%	0	0.00%	0	0.00%	0	0.00%	2	1.60%
LASD Return	9	8.33%	6	4.88%	73	4.85%	6	4.85%	5	3.80%
ACS Expired	0	0.00%	0	0.00%	0	0.00%	0	0.00%	1	0.36%
Total	13	12.04%	10	7.71%	115	7.64%	10	7.64%	12	8.19%



expertise in action™

Los Angeles County MTA Orange Line Approach Summary Report Location 1302: SB Tujunga Ave @ Busway

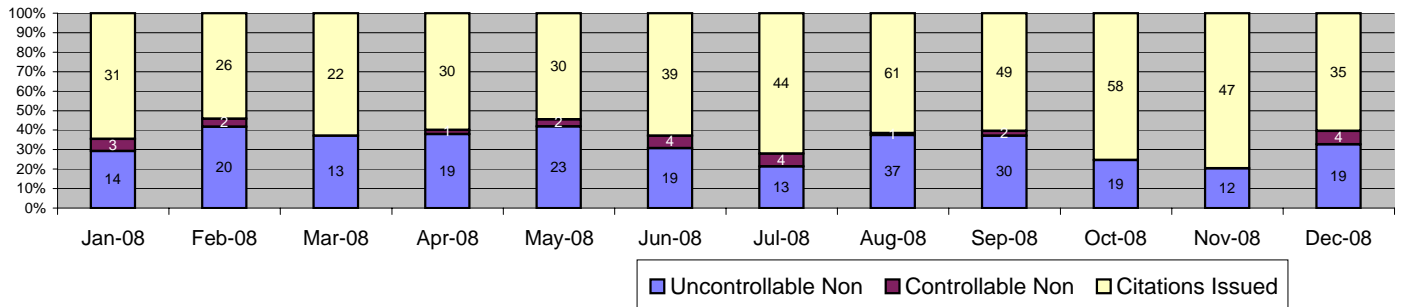


Events	Dec-08		3 Month Average		Year to Date Total		Year to Date Average		2007 Average	
	Quantity	% of Events	Quantity	% of Events	Quantity	% of Events	Quantity	% of Events	Quantity	% of Events
Non Violations	5	17.86%	4	10.15%	36	10.71%	3	10.71%	3	9.77%
Violations	23	82.14%	23	92.52%	300	89.29%	25	89.29%	23	90.23%
Total Events	28	100.00%	27	100.00%	336	100.00%	28	100.00%	26	100.00%
<i>Violations</i>	<i>Quantity</i>	<i>% of Viol</i>	<i>Quantity</i>	<i>% of Viol</i>	<i>Quantity</i>	<i>% of Viol</i>	<i>Quantity</i>	<i>% of Viol</i>	<i>Quantity</i>	<i>% of Viol</i>
Uncont. Non-Issued Viol	9	39.13%	11	48.57%	134	44.67%	11	44.67%	8	35.74%
Cont. Non-Issued Viol	1	4.35%	0	0.00%	7	2.33%	1	2.33%	0	1.81%
Citations	13	56.52%	12	52.45%	159	53.00%	13	53.00%	14	62.45%
Av. Violation Speed	19.26		20.23		19.85		19.85		20.37	
Av. Issued Speed	18.77		19.71		19.08		19.08		20.29	
Av. Violation Sec.	10.62		11.08		11.72		11.72		17.31	
Av. Issued Sec.	10.20		11.01		10.61		10.61		16.78	
Cal. Days/Enforc. Days	31	31	30	30	366	366	31	31	30	30
Daily Citation Yield	0.42	0.42	0.40	0.40	0.43	0.43	0.43	0.43	0.47	0.47
Cit /Viol. Iss. Rate	57%		51%		53%		53%		62%	
Prosecut. Iss. Rate	93%		100%		96%		96%		97%	
<i>Non - Violations</i>	<i>Quantity</i>	<i>% of Events</i>	<i>Quantity</i>	<i>% of Events</i>	<i>Quantity</i>	<i>% of Events</i>	<i>Quantity</i>	<i>% of Events</i>	<i>Quantity</i>	<i>% of Events</i>
Rear Axle Violation	0	0.00%	0	0.00%	0	0.00%	0	0.00%	0	0.00%
Right Turn	0	0.00%	0	0.00%	0	0.00%	0	0.00%	0	0.00%
No Violation Occurred	5	17.86%	4	13.58%	36	10.71%	3	10.71%	3	9.77%
Total Non Violations	5	17.86%	4	13.58%	36	10.71%	3	10.71%	3	9.77%
Non - Issued	<i>Quantity</i>	<i>% of Viol</i>	<i>Quantity</i>	<i>% of Viol</i>	<i>Quantity</i>	<i>% of Viol</i>	<i>Quantity</i>	<i>% of Viol</i>	<i>Quantity</i>	<i>% of Viol</i>
No Plate	1	4.35%	3	12.86%	41	13.67%	3	13.67%	2	8.66%
Out of State Plate	0	0.00%	0	0.00%	4	1.33%	0	1.33%	0	1.44%
Glare on Plate	0	0.00%	0	0.00%	0	0.00%	0	0.00%	0	0.72%
Illegible Plate	0	0.00%	0	1.43%	2	0.67%	0	0.67%	0	0.00%
Plate Obstructed	1	4.35%	0	1.43%	3	1.00%	0	1.00%	0	0.36%
Windshield Glare	0	0.00%	0	0.00%	4	1.33%	0	1.33%	0	0.00%
Driver Obstructed	0	0.00%	0	0.00%	1	0.33%	0	0.33%	0	0.00%
Car Obstructed	0	0.00%	0	0.00%	0	0.00%	0	0.00%	0	0.00%
Emergency Vehicle	2	8.70%	5	22.86%	46	15.33%	4	15.33%	4	15.16%
No DMV Match Found	5	21.74%	2	10.00%	33	11.00%	3	11.00%	2	9.03%
LASD Expired	0	0.00%	0	0.00%	0	0.00%	0	0.00%	0	0.36%
Other	0	0.00%	0	0.00%	0	0.00%	0	0.00%	0	0.00%
Total	9	39.13%	11	48.57%	80	44.67%	11	44.67%	8	35.74%
Framing of Plate	0	0.00%	0	0.00%	0	0.00%	0	0.00%	0	0.00%
Focus / Clarity of Plate	0	0.00%	0	0.00%	0	0.00%	0	0.00%	0	0.72%
Dark Interior	0	0.00%	0	0.00%	0	0.00%	0	0.00%	0	0.00%
Framing of Driver	0	0.00%	0	0.00%	0	0.00%	0	0.00%	0	0.00%
Focus / Clarity of Driver	0	0.00%	0	0.00%	0	0.00%	0	0.00%	0	0.36%
Framing of Car	0	0.00%	0	0.00%	0	0.00%	0	0.00%	0	0.00%
Data Error	1	4.35%	0	0.00%	1	0.33%	0	0.33%	0	0.00%
Exposure	0	0.00%	0	0.00%	1	0.33%	0	0.33%	0	0.36%
Equipment Malfunction	0	0.00%	0	0.00%	0	0.00%	0	0.00%	0	0.00%
LASD Return	0	0.00%	0	0.00%	3	1.00%	0	1.00%	0	0.00%
ACS Expired	0	0.00%	0	0.00%	2	0.67%	0	0.67%	0	0.36%
Total	1	4.35%	0	0.00%	7	2.33%	1	2.33%	0	1.81%



expertise in action™

Los Angeles County MTA Orange Line Approach Summary Report Location 1313: EB Oxnard St. @ Buffalo Ave

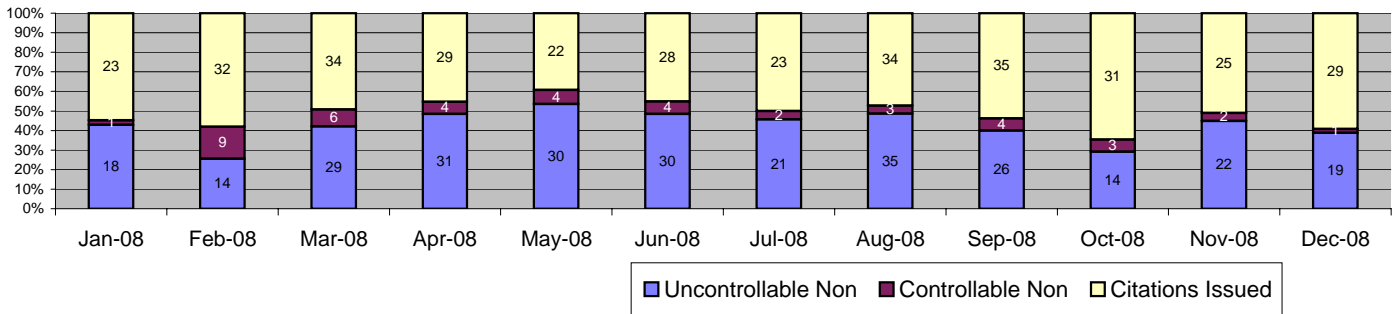


Events	Dec-08		3 Month Average		Year to Date Total		Year to Date Average		2007 Average	
	Quantity	% of Events	Quantity	% of Events	Quantity	% of Events	Quantity	% of Events	Quantity	% of Events
Non Violations	42	42.00%	42	40.13%	478	39.47%	40	39.47%	41	41.69%
Violations	58	58.00%	72	60.71%	733	60.53%	61	60.53%	57	58.31%
Total Events	100	100.00%	115	100.00%	1,211	100.00%	101	100.00%	98	100.00%
<i>Violations</i>	<i>Quantity</i>	<i>% of Viol</i>	<i>Quantity</i>	<i>% of Viol</i>	<i>Quantity</i>	<i>% of Viol</i>	<i>Quantity</i>	<i>% of Viol</i>	<i>Quantity</i>	<i>% of Viol</i>
Uncont. Non-Issued Viol	19	32.76%	20	28.11%	238	32.47%	20	32.47%	23	39.30%
Cont. Non-Issued Viol	4	6.90%	1	0.92%	23	3.14%	2	3.14%	4	7.28%
Citations	35	60.34%	51	59.13%	472	64.39%	39	64.39%	31	53.42%
Av. Violation Speed	20.58		22.13		23.26		23.26		23.20	
Av. Issued Speed	20.23		21.66		23.20		23.20		23.31	
Av. Violation Sec.	14.79		13.25		11.39		11.39		11.70	
Av. Issued Sec.	15.68		13.61		11.31		11.31		11.44	
Cal. Days/Enforc. Days	31	31	30	30	366	366	31	31	30	30
Daily Citation Yield	1.13	1.13	1.69	1.69	1.29	1.29	1.29	1.29	1.01	1.01
Cit /Viol. Iss. Rate	60%		71%		64%		64%		53%	
Prosecut. Iss. Rate	90%		99%		95%		95%		88%	
<i>Non - Violations</i>	<i>Quantity</i>	<i>% of Events</i>	<i>Quantity</i>	<i>% of Events</i>	<i>Quantity</i>	<i>% of Events</i>	<i>Quantity</i>	<i>% of Events</i>	<i>Quantity</i>	<i>% of Events</i>
Rear Axle Violation	1	1.00%	1	1.16%	14	1.16%	1	1.16%	2	2.21%
Right Turn	15	15.00%	15	13.08%	207	17.09%	17	17.09%	18	17.93%
No Violation Occurred	26	26.00%	26	22.67%	257	21.22%	21	21.22%	21	21.56%
Total Non Violations	42	42.00%	42	36.92%	478	39.47%	40	39.47%	41	41.69%
Non - Issued	<i>Quantity</i>	<i>% of Viol</i>	<i>Quantity</i>	<i>% of Viol</i>	<i>Quantity</i>	<i>% of Viol</i>	<i>Quantity</i>	<i>% of Viol</i>	<i>Quantity</i>	<i>% of Viol</i>
No Plate	6	10.34%	10	13.36%	97	13.23%	8	13.23%	11	18.63%
Out of State Plate	1	1.72%	1	0.92%	6	0.82%	1	0.82%	1	1.75%
Glare on Plate	0	0.00%	0	0.00%	0	0.00%	0	0.00%	0	0.15%
Illegible Plate	0	0.00%	0	0.00%	0	0.00%	0	0.00%	0	0.29%
Plate Obstructed	0	0.00%	0	0.46%	2	0.27%	0	0.27%	0	0.29%
Windshield Glare	2	3.45%	0	0.46%	15	2.05%	1	2.05%	0	0.73%
Driver Obstructed	0	0.00%	0	0.00%	5	0.68%	0	0.68%	0	0.00%
Car Obstructed	0	0.00%	0	0.46%	1	0.14%	0	0.14%	0	0.58%
Emergency Vehicle	2	3.45%	3	4.61%	43	5.87%	4	5.87%	3	5.39%
No DMV Match Found	8	13.79%	6	7.83%	68	9.28%	6	9.28%	6	11.06%
LASD Expired	0	0.00%	0	0.00%	1	0.14%	0	0.14%	0	0.44%
Other	0	0.00%	0	0.00%	0	0.00%	0	0.00%	0	0.00%
Total	19	32.76%	20	28.11%	80	32.47%	20	32.47%	23	39.30%
Framing of Plate	0	0.00%	0	0.00%	1	0.14%	0	0.14%	0	0.00%
Focus / Clarity of Plate	0	0.00%	0	0.00%	1	0.14%	0	0.14%	1	0.87%
Dark Interior	0	0.00%	0	0.00%	0	0.00%	0	0.00%	0	0.44%
Framing of Driver	0	0.00%	0	0.00%	0	0.00%	0	0.00%	0	0.00%
Focus / Clarity of Driver	0	0.00%	0	0.00%	1	0.14%	0	0.14%	0	0.15%
Framing of Car	0	0.00%	0	0.00%	0	0.00%	0	0.00%	2	2.62%
Data Error	0	0.00%	0	0.00%	0	0.00%	0	0.00%	0	0.15%
Exposure	0	0.00%	0	0.00%	1	0.14%	0	0.14%	0	0.00%
Equipment Malfunction	0	0.00%	0	0.00%	0	0.00%	0	0.00%	0	0.15%
LASD Return	1	1.72%	1	0.92%	15	2.05%	1	2.05%	1	1.89%
ACS Expired	3	5.17%	0	0.00%	4	0.55%	0	0.55%	1	1.02%
Total	4	6.90%	1	0.92%	23	3.14%	2	3.14%	4	7.28%



expertise in action™

Los Angeles County MTA Orange Line Approach Summary Report Location 1314: WB Oxnard St. @ Buffalo Ave

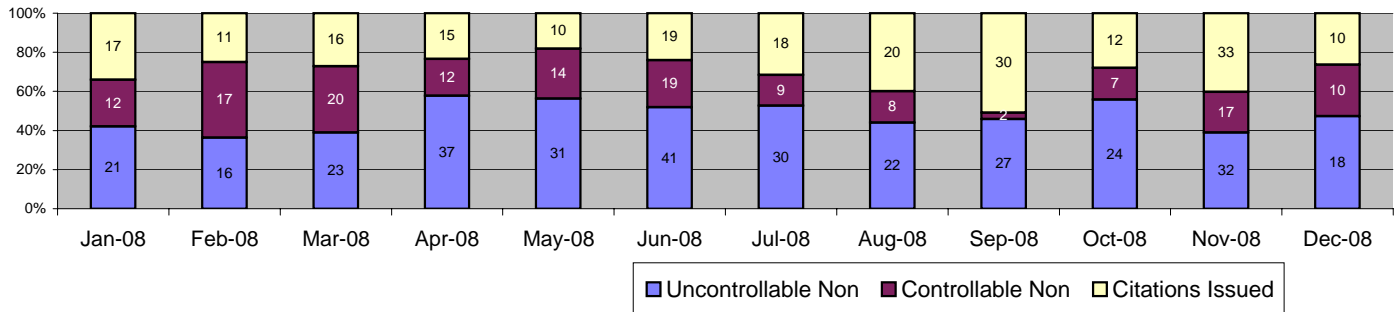


Events	Dec-08		3 Month Average		Year to Date Total		Year to Date Average		2007 Average	
	Quantity	% of Events	Quantity	% of Events	Quantity	% of Events	Quantity	% of Events	Quantity	% of Events
Non Violations	104	67.97%	116	67.06%	1,541	69.48%	128	69.48%	182	72.05%
Violations	49	32.03%	54	31.36%	677	30.52%	56	30.52%	70	27.95%
Total Events	153	100.00%	170	100.00%	2,218	100.00%	185	100.00%	252	100.00%
<i>Violations</i>	<i>Quantity</i>	<i>% of Viol</i>	<i>Quantity</i>	<i>% of Viol</i>	<i>Quantity</i>	<i>% of Viol</i>	<i>Quantity</i>	<i>% of Viol</i>	<i>Quantity</i>	<i>% of Viol</i>
Uncont. Non-Issued Viol	19	38.78%	21	38.27%	289	42.69%	24	42.69%	23	32.90%
Cont. Non-Issued Viol	1	2.04%	3	5.56%	43	6.35%	4	6.35%	8	10.77%
Citations	29	59.18%	30	44.62%	345	50.96%	29	50.96%	40	56.33%
Av. Violation Speed	31.10		30.97		30.51		30.51		31.25	
Av. Issued Speed	31.72		31.57		30.96		30.96		31.71	
Av. Violation Sec.	3.08		4.10		4.67		4.67		4.88	
Av. Issued Sec.	3.03		4.31		4.60		4.60		4.46	
Cal. Days/Enforc. Days	31	31	30	30	366	366	31	31	30	30
Daily Citation Yield	0.94	0.94	1.00	1.00	0.94	0.94	0.94	0.94	1.30	1.30
Cit /Viol. Iss. Rate	59%		56%		51%		51%		56%	
Prosecut. Iss. Rate	97%		91%		89%		89%		84%	
<i>Non - Violations</i>	<i>Quantity</i>	<i>% of Events</i>	<i>Quantity</i>	<i>% of Events</i>	<i>Quantity</i>	<i>% of Events</i>	<i>Quantity</i>	<i>% of Events</i>	<i>Quantity</i>	<i>% of Events</i>
Rear Axle Violation	1	0.65%	0	0.20%	5	0.23%	0	0.23%	0	0.07%
Right Turn	0	0.00%	0	0.00%	1	0.05%	0	0.05%	0	0.07%
No Violation Occurred	103	67.32%	116	68.04%	1,535	69.21%	128	69.21%	181	71.92%
Total Non Violations	104	67.97%	116	68.24%	1,541	69.48%	128	69.48%	182	72.05%
Non - Issued	<i>Quantity</i>	<i>% of Viol</i>	<i>Quantity</i>	<i>% of Viol</i>	<i>Quantity</i>	<i>% of Viol</i>	<i>Quantity</i>	<i>% of Viol</i>	<i>Quantity</i>	<i>% of Viol</i>
No Plate	7	14.29%	10	17.90%	103	15.21%	9	15.21%	11	16.09%
Out of State Plate	0	0.00%	1	2.47%	12	1.77%	1	1.77%	1	0.71%
Glare on Plate	1	2.04%	0	0.00%	3	0.44%	0	0.44%	1	1.18%
Illegible Plate	0	0.00%	0	0.00%	0	0.00%	0	0.00%	0	0.59%
Plate Obstructed	1	2.04%	0	0.62%	3	0.44%	0	0.44%	0	0.00%
Windshield Glare	4	8.16%	3	5.56%	86	12.70%	7	12.70%	2	2.49%
Driver Obstructed	0	0.00%	0	0.62%	10	1.48%	1	1.48%	0	0.12%
Car Obstructed	0	0.00%	1	1.23%	4	0.59%	0	0.59%	2	2.13%
Emergency Vehicle	2	4.08%	2	3.09%	17	2.51%	1	2.51%	2	2.13%
No DMV Match Found	4	8.16%	4	6.79%	50	7.39%	4	7.39%	5	6.63%
LASD Expired	0	0.00%	0	0.00%	1	0.15%	0	0.15%	1	0.71%
Other	0	0.00%	0	0.00%	0	0.00%	0	0.00%	0	0.12%
Total	19	38.78%	21	38.27%	80	42.69%	24	42.69%	23	32.90%
Framing of Plate	0	0.00%	0	0.00%	0	0.00%	0	0.00%	0	0.00%
Focus / Clarity of Plate	0	0.00%	0	0.00%	2	0.30%	0	0.30%	1	1.78%
Dark Interior	0	0.00%	0	0.00%	4	0.59%	0	0.59%	1	0.83%
Framing of Driver	0	0.00%	0	0.62%	1	0.15%	0	0.15%	0	0.00%
Focus / Clarity of Driver	0	0.00%	0	0.00%	0	0.00%	0	0.00%	0	0.00%
Framing of Car	0	0.00%	0	0.00%	1	0.15%	0	0.15%	0	0.24%
Data Error	0	0.00%	0	0.00%	0	0.00%	0	0.00%	2	2.96%
Exposure	0	0.00%	0	0.00%	2	0.30%	0	0.30%	0	0.36%
Equipment Malfunction	0	0.00%	0	0.00%	1	0.15%	0	0.15%	0	0.36%
LASD Return	1	2.04%	3	4.94%	32	4.73%	3	4.73%	2	2.72%
ACS Expired	0	0.00%	0	0.00%	0	0.00%	0	0.00%	1	1.54%
Total	1	2.04%	3	5.56%	43	6.35%	4	6.35%	8	10.77%



expertise in action™

Los Angeles County MTA Orange Line Approach Summary Report Location 1321: NB Woodman Ave @ Busway

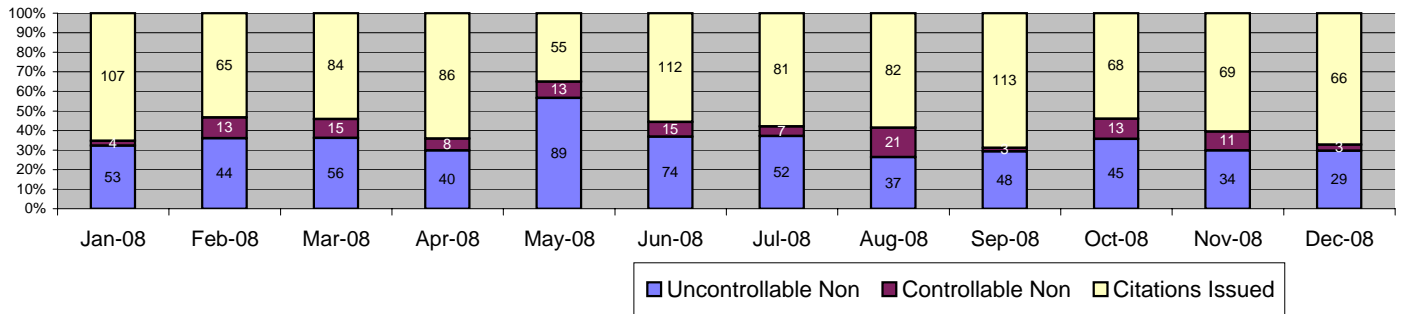


Events	Dec-08		3 Month Average		Year to Date Total		Year to Date Average		2007 Average	
	Quantity	% of Events	Quantity	% of Events	Quantity	% of Events	Quantity	% of Events	Quantity	% of Events
Non Violations	8	17.39%	18	13.52%	155	18.56%	13	18.56%	12	15.50%
Violations	38	82.61%	61	84.93%	680	81.44%	57	81.44%	67	84.50%
Total Events	46	100.00%	79	100.00%	835	100.00%	70	100.00%	80	100.00%
<i>Violations</i>	<i>Quantity</i>	<i>% of Viol</i>	<i>Quantity</i>	<i>% of Viol</i>	<i>Quantity</i>	<i>% of Viol</i>	<i>Quantity</i>	<i>% of Viol</i>	<i>Quantity</i>	<i>% of Viol</i>
Uncont. Non-Issued Viol	18	47.37%	28	45.11%	322	47.35%	27	47.35%	23	33.95%
Cont. Non-Issued Viol	10	26.32%	9	14.13%	147	21.62%	12	21.62%	14	20.32%
Citations	10	26.32%	25	22.91%	211	31.03%	18	31.03%	31	45.72%
Av. Violation Speed	25.89		25.43		25.59		25.59		25.95	
Av. Issued Speed	27.80		25.65		26.14		26.14		26.26	
Av. Violation Sec.	5.75		6.26		5.29		5.29		5.20	
Av. Issued Sec.	4.23		6.85		4.86		4.86		4.59	
Cal. Days/Enforc. Days	31	31	30	30	366	366	31	31	30	30
Daily Citation Yield	0.32	0.32	0.82	0.82	0.58	0.58	0.58	0.58	1.01	1.01
Cit /Viol. Iss. Rate	26%		41%		31%		31%		46%	
Prosecut. Iss. Rate	50%		74%		59%		59%		69%	
<i>Non - Violations</i>	<i>Quantity</i>	<i>% of Events</i>	<i>Quantity</i>	<i>% of Events</i>	<i>Quantity</i>	<i>% of Events</i>	<i>Quantity</i>	<i>% of Events</i>	<i>Quantity</i>	<i>% of Events</i>
Rear Axle Violation	0	0.00%	0	0.00%	1	0.12%	0	0.12%	0	0.00%
Right Turn	0	0.00%	0	0.00%	0	0.00%	0	0.00%	0	0.00%
No Violation Occurred	8	17.39%	18	22.69%	154	18.44%	13	18.44%	12	15.50%
Total Non Violations	8	17.39%	18	22.69%	155	18.56%	13	18.56%	12	15.50%
Non - Issued	<i>Quantity</i>	<i>% of Viol</i>	<i>Quantity</i>	<i>% of Viol</i>	<i>Quantity</i>	<i>% of Viol</i>	<i>Quantity</i>	<i>% of Viol</i>	<i>Quantity</i>	<i>% of Viol</i>
No Plate	4	10.53%	7	10.87%	78	11.47%	7	11.47%	9	13.14%
Out of State Plate	0	0.00%	0	0.54%	3	0.44%	0	0.44%	1	0.87%
Glare on Plate	0	0.00%	1	1.09%	2	0.29%	0	0.29%	1	0.87%
Illegible Plate	0	0.00%	0	0.00%	0	0.00%	0	0.00%	1	1.24%
Plate Obstructed	0	0.00%	0	0.00%	1	0.15%	0	0.15%	0	0.25%
Windshield Glare	11	28.95%	14	22.83%	170	25.00%	14	25.00%	3	4.21%
Driver Obstructed	0	0.00%	0	0.00%	5	0.74%	0	0.74%	0	0.12%
Car Obstructed	0	0.00%	0	0.00%	2	0.29%	0	0.29%	1	1.36%
Emergency Vehicle	1	2.63%	3	4.35%	26	3.82%	2	3.82%	2	2.35%
No DMV Match Found	2	5.26%	3	4.89%	33	4.85%	3	4.85%	6	9.17%
LASD Expired	0	0.00%	0	0.54%	2	0.29%	0	0.29%	0	0.37%
Other	0	0.00%	0	0.00%	0	0.00%	0	0.00%	0	0.00%
Total	18	47.37%	28	45.11%	80	47.35%	27	47.35%	23	33.95%
Framing of Plate	0	0.00%	0	0.00%	7	1.03%	1	1.03%	1	1.36%
Focus / Clarity of Plate	0	0.00%	0	0.00%	5	0.74%	0	0.74%	2	3.22%
Dark Interior	2	5.26%	4	7.07%	59	8.68%	5	8.68%	2	3.22%
Framing of Driver	0	0.00%	1	1.09%	5	0.74%	0	0.74%	0	0.00%
Focus / Clarity of Driver	2	5.26%	0	0.00%	7	1.03%	1	1.03%	0	0.62%
Framing of Car	1	2.63%	0	0.00%	2	0.29%	0	0.29%	0	0.12%
Data Error	0	0.00%	0	0.00%	0	0.00%	0	0.00%	0	0.00%
Exposure	0	0.00%	0	0.00%	1	0.15%	0	0.15%	0	0.12%
Equipment Malfunction	0	0.00%	1	1.63%	5	0.74%	0	0.74%	2	2.35%
LASD Return	5	13.16%	3	4.35%	55	8.09%	5	8.09%	6	8.55%
ACS Expired	0	0.00%	0	0.00%	1	0.15%	0	0.15%	1	0.74%
Total	10	26.32%	9	14.13%	147	21.62%	12	21.62%	14	20.32%



expertise in action™

Los Angeles County MTA Orange Line Approach Summary Report Location 1322: SB Woodman Ave @ Busway

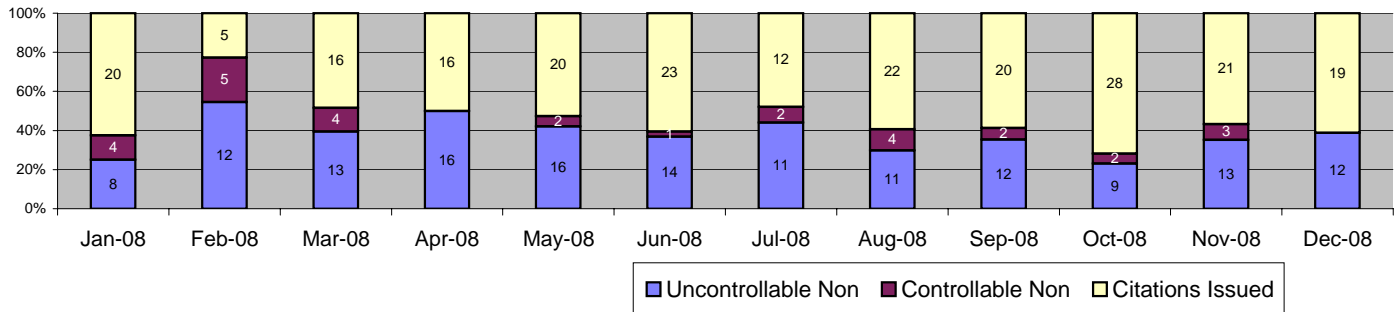


Events	Dec-08		3 Month Average		Year to Date Total		Year to Date Average		2007 Average	
	Quantity	% of Events	Quantity	% of Events	Quantity	% of Events	Quantity	% of Events	Quantity	% of Events
Non Violations	26	20.97%	30	14.14%	342	16.63%	29	16.63%	34	14.58%
Violations	98	79.03%	135	84.85%	1,715	83.37%	143	83.37%	197	85.42%
Total Events	124	100.00%	165	100.00%	2,057	100.00%	171	100.00%	231	100.00%
<i>Violations</i>	<i>Quantity</i>	<i>% of Viol</i>	<i>Quantity</i>	<i>% of Viol</i>	<i>Quantity</i>	<i>% of Viol</i>	<i>Quantity</i>	<i>% of Viol</i>	<i>Quantity</i>	<i>% of Viol</i>
Uncont. Non-Issued Viol	29	29.59%	42	31.44%	601	35.04%	50	35.04%	56	28.19%
Cont. Non-Issued Viol	3	3.06%	9	6.68%	126	7.35%	11	7.35%	6	3.09%
Citations	66	67.35%	83	51.13%	988	57.61%	82	57.61%	136	68.72%
Av. Violation Speed	29.24		27.88		29.00		29.00		29.77	
Av. Issued Speed	29.56		27.94		29.15		29.15		29.59	
Av. Violation Sec.	2.51		3.04		2.68		2.68		1.85	
Av. Issued Sec.	3.05		3.21		2.69		2.69		1.83	
Cal. Days/Enforc. Days	31	31	30	30	366	366	31	31	30	30
Daily Citation Yield	2.13	2.13	2.75	2.75	2.70	2.70	2.70	2.70	4.45	4.45
Cit /Viol. Iss. Rate	67%		62%		58%		58%		69%	
Prosecut. Iss. Rate	96%		90%		89%		89%		96%	
<i>Non - Violations</i>	<i>Quantity</i>	<i>% of Events</i>	<i>Quantity</i>	<i>% of Events</i>	<i>Quantity</i>	<i>% of Events</i>	<i>Quantity</i>	<i>% of Events</i>	<i>Quantity</i>	<i>% of Events</i>
Rear Axle Violation	0	0.00%	0	0.20%	3	0.15%	0	0.15%	0	0.04%
Right Turn	0	0.00%	0	0.00%	0	0.00%	0	0.00%	0	0.00%
No Violation Occurred	26	20.97%	30	18.18%	339	16.48%	28	16.48%	34	14.55%
Total Non Violations	26	20.97%	30	18.38%	342	16.63%	29	16.63%	34	14.58%
Non - Issued	<i>Quantity</i>	<i>% of Viol</i>	<i>Quantity</i>	<i>% of Viol</i>	<i>Quantity</i>	<i>% of Viol</i>	<i>Quantity</i>	<i>% of Viol</i>	<i>Quantity</i>	<i>% of Viol</i>
No Plate	14	14.29%	19	14.11%	271	15.80%	23	15.80%	27	13.48%
Out of State Plate	3	3.06%	2	1.73%	32	1.87%	3	1.87%	3	1.48%
Glare on Plate	1	1.02%	0	0.00%	1	0.06%	0	0.06%	0	0.04%
Illegible Plate	0	0.00%	0	0.00%	2	0.12%	0	0.12%	1	0.63%
Plate Obstructed	0	0.00%	2	1.24%	18	1.05%	2	1.05%	6	2.92%
Windshield Glare	2	2.04%	3	2.23%	77	4.49%	6	4.49%	0	0.17%
Driver Obstructed	0	0.00%	2	1.73%	37	2.16%	3	2.16%	0	0.13%
Car Obstructed	1	1.02%	1	0.50%	5	0.29%	0	0.29%	2	0.89%
Emergency Vehicle	0	0.00%	1	0.74%	12	0.70%	1	0.70%	0	0.21%
No DMV Match Found	8	8.16%	12	9.16%	142	8.28%	12	8.28%	15	7.78%
LASD Expired	0	0.00%	0	0.00%	4	0.23%	0	0.23%	1	0.42%
Other	0	0.00%	0	0.00%	0	0.00%	0	0.00%	0	0.04%
Total	29	29.59%	42	31.44%	80	35.04%	50	35.04%	56	28.19%
Framing of Plate	0	0.00%	0	0.25%	1	0.06%	0	0.06%	0	0.00%
Focus / Clarity of Plate	0	0.00%	0	0.00%	0	0.00%	0	0.00%	1	0.25%
Dark Interior	1	1.02%	0	0.00%	10	0.58%	1	0.58%	0	0.08%
Framing of Driver	0	0.00%	0	0.00%	1	0.06%	0	0.06%	0	0.00%
Focus / Clarity of Driver	0	0.00%	0	0.25%	4	0.23%	0	0.23%	0	0.04%
Framing of Car	0	0.00%	0	0.00%	1	0.06%	0	0.06%	0	0.00%
Data Error	0	0.00%	0	0.00%	0	0.00%	0	0.00%	0	0.04%
Exposure	0	0.00%	0	0.00%	4	0.23%	0	0.23%	0	0.00%
Equipment Malfunction	1	1.02%	0	0.25%	14	0.82%	1	0.82%	2	1.06%
LASD Return	1	1.02%	8	5.69%	88	5.13%	7	5.13%	2	1.01%
ACS Expired	0	0.00%	0	0.25%	3	0.17%	0	0.17%	1	0.59%
Total	3	3.06%	9	6.68%	126	7.35%	11	7.35%	6	3.09%



expertise in action™

Los Angeles County MTA Orange Line Approach Summary Report Location 1331: NB Kester Ave @ Busway

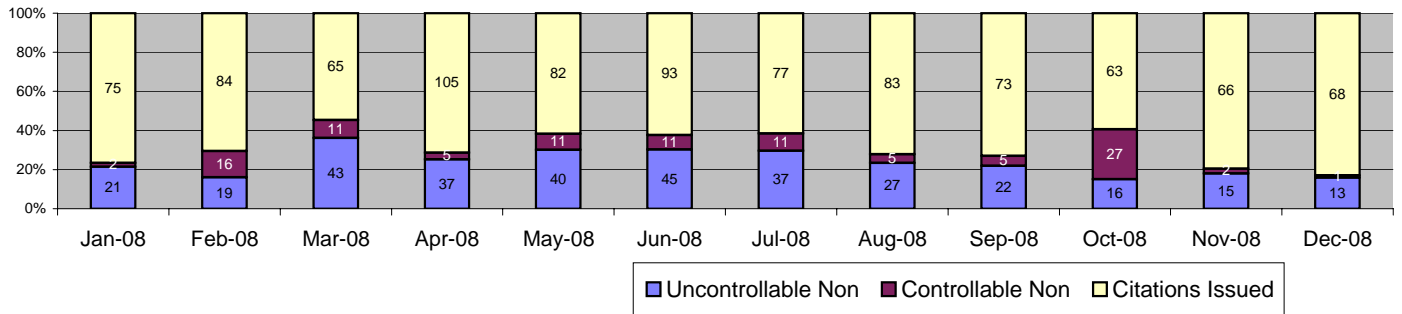


Events	Dec-08		3 Month Average		Year to Date Total		Year to Date Average		2007 Average	
	Quantity	% of Events	Quantity	% of Events	Quantity	% of Events	Quantity	% of Events	Quantity	% of Events
Non Violations	19	38.00%	18	39.88%	212	34.75%	18	34.75%	21	27.92%
Violations	31	62.00%	37	61.77%	398	65.25%	33	65.25%	55	72.08%
Total Events	50	100.00%	55	100.00%	610	100.00%	51	100.00%	76	100.00%
<i>Violations</i>	<i>Quantity</i>	<i>% of Viol</i>	<i>Quantity</i>	<i>% of Viol</i>	<i>Quantity</i>	<i>% of Viol</i>	<i>Quantity</i>	<i>% of Viol</i>	<i>Quantity</i>	<i>% of Viol</i>
Uncont. Non-Issued Viol	12	38.71%	11	30.91%	147	36.93%	12	36.93%	12	21.03%
Cont. Non-Issued Viol	0	0.00%	2	6.36%	29	7.29%	2	7.29%	3	6.05%
Citations	19	61.29%	23	50.37%	222	55.78%	19	55.78%	40	72.92%
Av. Violation Speed	33.90		32.78		33.01		33.01		32.79	
Av. Issued Speed	31.79		31.75		32.91		32.91		33.32	
Av. Violation Sec.	1.44		1.56		2.09		2.09		2.08	
Av. Issued Sec.	0.99		1.21		2.04		2.04		1.52	
Cal. Days/Enforc. Days	31	31	30	30	366	366	31	31	30	30
Daily Citation Yield	0.61	0.61	0.76	0.76	0.61	0.61	0.61	0.61	1.32	1.32
Cit /Viol. Iss. Rate	61%		63%		56%		56%		73%	
Prosecut. Iss. Rate	100%		91%		88%		88%		92%	
<i>Non - Violations</i>	<i>Quantity</i>	<i>% of Events</i>	<i>Quantity</i>	<i>% of Events</i>	<i>Quantity</i>	<i>% of Events</i>	<i>Quantity</i>	<i>% of Events</i>	<i>Quantity</i>	<i>% of Events</i>
Rear Axle Violation	0	0.00%	0	0.00%	1	0.16%	0	0.16%	0	0.11%
Right Turn	0	0.00%	0	0.00%	0	0.00%	0	0.00%	0	0.00%
No Violation Occurred	19	38.00%	18	32.93%	211	34.59%	18	34.59%	21	27.81%
Total Non Violations	19	38.00%	18	32.93%	212	34.75%	18	34.75%	21	27.92%
Non - Issued	<i>Quantity</i>	<i>% of Viol</i>	<i>Quantity</i>	<i>% of Viol</i>	<i>Quantity</i>	<i>% of Viol</i>	<i>Quantity</i>	<i>% of Viol</i>	<i>Quantity</i>	<i>% of Viol</i>
No Plate	4	12.90%	5	13.64%	54	13.57%	5	13.57%	6	9.98%
Out of State Plate	3	9.68%	0	0.91%	7	1.76%	1	1.76%	0	0.76%
Glare on Plate	0	0.00%	0	0.00%	0	0.00%	0	0.00%	0	0.00%
Illegible Plate	0	0.00%	0	0.91%	2	0.50%	0	0.50%	0	0.15%
Plate Obstructed	0	0.00%	0	0.00%	2	0.50%	0	0.50%	0	0.30%
Windshield Glare	4	12.90%	3	9.09%	40	10.05%	3	10.05%	1	1.21%
Driver Obstructed	0	0.00%	0	0.00%	4	1.01%	0	1.01%	0	0.00%
Car Obstructed	0	0.00%	0	0.00%	0	0.00%	0	0.00%	0	0.61%
Emergency Vehicle	0	0.00%	0	0.91%	3	0.75%	0	0.75%	0	0.30%
No DMV Match Found	1	3.23%	2	5.45%	35	8.79%	3	8.79%	4	7.56%
LASD Expired	0	0.00%	0	0.00%	0	0.00%	0	0.00%	0	0.15%
Other	0	0.00%	0	0.00%	0	0.00%	0	0.00%	0	0.00%
Total	12	38.71%	11	30.91%	80	36.93%	12	36.93%	12	21.03%
Framing of Plate	0	0.00%	0	0.00%	0	0.00%	0	0.00%	0	0.00%
Focus / Clarity of Plate	0	0.00%	0	0.00%	0	0.00%	0	0.00%	0	0.00%
Dark Interior	0	0.00%	0	0.91%	4	1.01%	0	1.01%	0	0.15%
Framing of Driver	0	0.00%	0	0.00%	0	0.00%	0	0.00%	0	0.00%
Focus / Clarity of Driver	0	0.00%	0	0.00%	0	0.00%	0	0.00%	0	0.15%
Framing of Car	0	0.00%	0	0.00%	0	0.00%	0	0.00%	0	0.00%
Data Error	0	0.00%	0	0.00%	0	0.00%	0	0.00%	0	0.45%
Exposure	0	0.00%	0	0.00%	3	0.75%	0	0.75%	0	0.15%
Equipment Malfunction	0	0.00%	0	0.00%	0	0.00%	0	0.00%	0	0.00%
LASD Return	0	0.00%	2	4.55%	20	5.03%	2	5.03%	2	3.18%
ACS Expired	0	0.00%	0	0.91%	2	0.50%	0	0.50%	1	1.97%
Total	0	0.00%	2	6.36%	29	7.29%	2	7.29%	3	6.05%



expertise in action™

Los Angeles County MTA Orange Line Approach Summary Report Location 1332: SB Kester Ave @ Busway

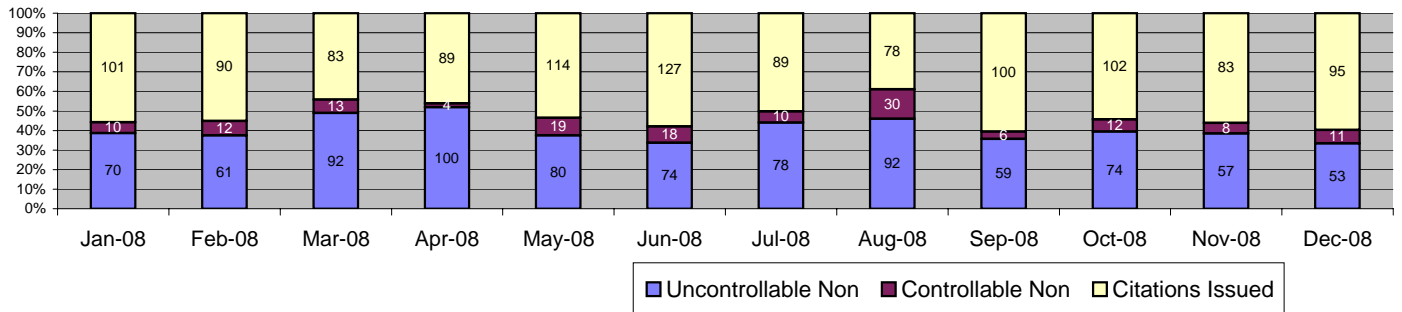


Events	Dec-08		3 Month Average		Year to Date Total		Year to Date Average		2007 Average	
	Quantity	% of Events	Quantity	% of Events	Quantity	% of Events	Quantity	% of Events	Quantity	% of Events
Non Violations	8	8.89%	11	6.34%	124	8.27%	10	8.27%	11	8.65%
Violations	82	91.11%	96	92.90%	1,376	91.73%	115	91.73%	117	91.35%
Total Events	90	100.00%	107	100.00%	1,500	100.00%	125	100.00%	128	100.00%
<i>Violations</i>	<i>Quantity</i>	<i>% of Viol</i>	<i>Quantity</i>	<i>% of Viol</i>	<i>Quantity</i>	<i>% of Viol</i>	<i>Quantity</i>	<i>% of Viol</i>	<i>Quantity</i>	<i>% of Viol</i>
Uncont. Non-Issued Viol	13	15.85%	18	18.34%	335	24.35%	28	24.35%	24	20.85%
Cont. Non-Issued Viol	1	1.22%	11	11.76%	107	7.78%	9	7.78%	7	5.98%
Citations	68	82.93%	67	62.57%	934	67.88%	78	67.88%	86	73.17%
Av. Violation Speed	33.98		34.00		34.44		34.44		34.49	
Av. Issued Speed	33.79		34.43		34.53		34.53		34.51	
Av. Violation Sec.	0.64		0.80		0.77		0.77		0.90	
Av. Issued Sec.	0.64		0.77		0.77		0.77		0.83	
Cal. Days/Enforc. Days	31	31	30	30	366	366	31	31	30	30
Daily Citation Yield	2.19	2.19	2.22	2.22	2.55	2.55	2.55	2.55	2.82	2.82
Cit /Viol. Iss. Rate	83%		70%		68%		68%		73%	
Prosecut. Iss. Rate	99%		86%		90%		90%		92%	
<i>Non - Violations</i>	<i>Quantity</i>	<i>% of Events</i>	<i>Quantity</i>	<i>% of Events</i>	<i>Quantity</i>	<i>% of Events</i>	<i>Quantity</i>	<i>% of Events</i>	<i>Quantity</i>	<i>% of Events</i>
Rear Axle Violation	0	0.00%	0	0.00%	2	0.13%	0	0.13%	0	0.00%
Right Turn	0	0.00%	0	0.00%	0	0.00%	0	0.00%	0	0.07%
No Violation Occurred	8	8.89%	11	10.25%	122	8.13%	10	8.13%	11	8.58%
Total Non Violations	8	8.89%	11	10.25%	124	8.27%	10	8.27%	11	8.65%
Non - Issued	<i>Quantity</i>	<i>% of Viol</i>	<i>Quantity</i>	<i>% of Viol</i>	<i>Quantity</i>	<i>% of Viol</i>	<i>Quantity</i>	<i>% of Viol</i>	<i>Quantity</i>	<i>% of Viol</i>
No Plate	4	4.88%	5	5.19%	81	5.89%	7	5.89%	7	5.91%
Out of State Plate	2	2.44%	3	2.77%	36	2.62%	3	2.62%	2	1.57%
Glare on Plate	0	0.00%	0	0.00%	1	0.07%	0	0.07%	0	0.14%
Illegible Plate	0	0.00%	0	0.00%	3	0.22%	0	0.22%	0	0.21%
Plate Obstructed	0	0.00%	0	0.00%	1	0.07%	0	0.07%	0	0.21%
Windshield Glare	0	0.00%	1	1.38%	52	3.78%	4	3.78%	0	0.14%
Driver Obstructed	0	0.00%	1	1.38%	19	1.38%	2	1.38%	1	0.50%
Car Obstructed	0	0.00%	0	0.00%	4	0.29%	0	0.29%	0	0.14%
Emergency Vehicle	0	0.00%	0	0.00%	3	0.22%	0	0.22%	0	0.28%
No DMV Match Found	7	8.54%	7	7.61%	125	9.08%	10	9.08%	13	10.82%
LASD Expired	0	0.00%	0	0.00%	10	0.73%	1	0.73%	1	0.85%
Other	0	0.00%	0	0.00%	0	0.00%	0	0.00%	0	0.07%
Total	13	15.85%	18	18.34%	80	24.35%	28	24.35%	24	20.85%
Framing of Plate	0	0.00%	0	0.00%	0	0.00%	0	0.00%	0	0.00%
Focus / Clarity of Plate	0	0.00%	0	0.35%	3	0.22%	0	0.22%	0	0.21%
Dark Interior	0	0.00%	0	0.35%	4	0.29%	0	0.29%	0	0.00%
Framing of Driver	0	0.00%	0	0.00%	2	0.15%	0	0.15%	0	0.00%
Focus / Clarity of Driver	0	0.00%	0	0.00%	1	0.07%	0	0.07%	0	0.00%
Framing of Car	0	0.00%	0	0.00%	0	0.00%	0	0.00%	0	0.00%
Data Error	0	0.00%	0	0.00%	0	0.00%	0	0.00%	0	0.07%
Exposure	0	0.00%	3	3.11%	14	1.02%	1	1.02%	0	0.36%
Equipment Malfunction	0	0.00%	5	4.84%	15	1.09%	1	1.09%	1	0.43%
LASD Return	1	1.22%	3	3.11%	67	4.87%	6	4.87%	2	1.64%
ACS Expired	0	0.00%	0	0.00%	1	0.07%	0	0.07%	4	3.27%
Total	1	1.22%	11	11.76%	107	7.78%	9	7.78%	7	5.98%



expertise in action™

Los Angeles County MTA Orange Line Approach Summary Report Location 1341: NB Sepulveda Blvd @ Busway

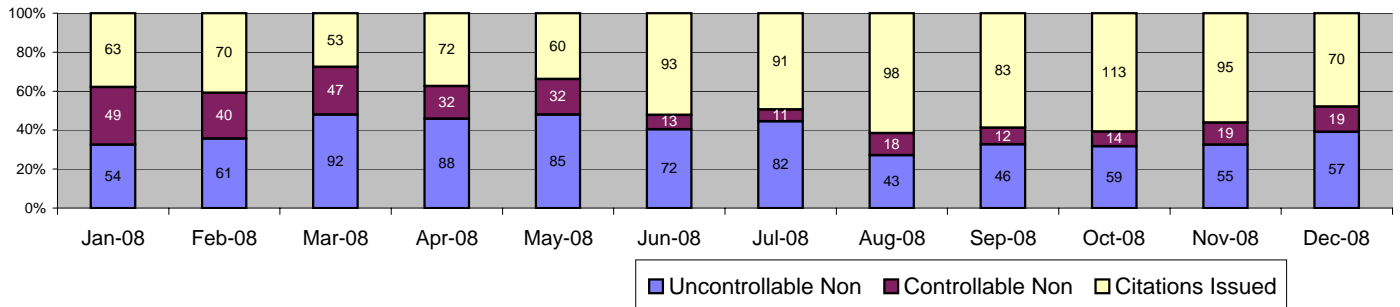


Events	Dec-08		3 Month Average		Year to Date Total		Year to Date Average		2007 Average	
	Quantity	% of Events	Quantity	% of Events	Quantity	% of Events	Quantity	% of Events	Quantity	% of Events
Non Violations	6	3.64%	6	4.48%	88	3.86%	7	3.86%	9	3.97%
Violations	159	96.36%	167	95.16%	2,194	96.14%	183	96.14%	208	96.03%
Total Events	165	100.00%	173	100.00%	2,282	100.00%	190	100.00%	216	100.00%
<i>Violations</i>	<i>Quantity</i>	<i>% of Viol</i>	<i>Quantity</i>	<i>% of Viol</i>	<i>Quantity</i>	<i>% of Viol</i>	<i>Quantity</i>	<i>% of Viol</i>	<i>Quantity</i>	<i>% of Viol</i>
Uncont. Non-Issued Viol	53	33.33%	63	37.92%	890	40.57%	74	40.57%	73	35.05%
Cont. Non-Issued Viol	11	6.92%	9	5.19%	153	6.97%	13	6.97%	13	6.26%
Citations	95	59.75%	95	47.93%	1,151	52.46%	96	52.46%	122	58.69%
Av. Violation Speed	34.29		34.08		34.35		34.35		35.00	
Av. Issued Speed	34.57		34.45		34.70		34.70		35.13	
Av. Violation Sec.	0.55		0.89		0.87		0.87		0.76	
Av. Issued Sec.	0.47		0.80		0.70		0.70		0.68	
Cal. Days/Enforc. Days	31	31	30	30	366	366	31	31	30	30
Daily Citation Yield	3.06	3.06	3.13	3.13	3.14	3.14	3.14	3.14	4.01	4.01
Cit /Viol. Iss. Rate	60%		57%		52%		52%		59%	
Prosecut. Iss. Rate	90%		92%		88%		88%		90%	
<i>Non - Violations</i>	<i>Quantity</i>	<i>% of Events</i>	<i>Quantity</i>	<i>% of Events</i>	<i>Quantity</i>	<i>% of Events</i>	<i>Quantity</i>	<i>% of Events</i>	<i>Quantity</i>	<i>% of Events</i>
Rear Axle Violation	2	1.21%	1	0.58%	7	0.31%	1	0.31%	0	0.15%
Right Turn	0	0.00%	0	0.00%	0	0.00%	0	0.00%	0	0.00%
No Violation Occurred	4	2.42%	5	2.89%	81	3.55%	7	3.55%	8	3.82%
Total Non Violations	6	3.64%	6	3.47%	88	3.86%	7	3.86%	9	3.97%
Non - Issued	<i>Quantity</i>	<i>% of Viol</i>	<i>Quantity</i>	<i>% of Viol</i>	<i>Quantity</i>	<i>% of Viol</i>	<i>Quantity</i>	<i>% of Viol</i>	<i>Quantity</i>	<i>% of Viol</i>
No Plate	23	14.47%	26	15.77%	327	14.90%	27	14.90%	29	14.09%
Out of State Plate	2	1.26%	3	1.60%	41	1.87%	3	1.87%	4	1.73%
Glare on Plate	1	0.63%	0	0.20%	5	0.23%	0	0.23%	1	0.36%
Illegible Plate	1	0.63%	0	0.00%	5	0.23%	0	0.23%	1	0.32%
Plate Obstructed	1	0.63%	2	1.40%	24	1.09%	2	1.09%	4	1.73%
Windshield Glare	8	5.03%	11	6.59%	197	8.98%	16	8.98%	3	1.57%
Driver Obstructed	0	0.00%	1	0.60%	29	1.32%	2	1.32%	0	0.16%
Car Obstructed	10	6.29%	8	4.79%	106	4.83%	9	4.83%	11	5.14%
Emergency Vehicle	1	0.63%	2	1.40%	35	1.60%	3	1.60%	2	1.00%
No DMV Match Found	6	3.77%	9	5.59%	115	5.24%	10	5.24%	18	8.67%
LASD Expired	0	0.00%	0	0.00%	6	0.27%	1	0.27%	1	0.28%
Other	0	0.00%	0	0.00%	0	0.00%	0	0.00%	0	0.00%
Total	53	33.33%	63	37.92%	80	40.57%	74	40.57%	73	35.05%
Framing of Plate	0	0.00%	0	0.00%	0	0.00%	0	0.00%	1	0.60%
Focus / Clarity of Plate	0	0.00%	0	0.20%	4	0.18%	0	0.18%	1	0.56%
Dark Interior	0	0.00%	0	0.00%	8	0.36%	1	0.36%	1	0.24%
Framing of Driver	0	0.00%	0	0.00%	1	0.05%	0	0.05%	0	0.00%
Focus / Clarity of Driver	0	0.00%	0	0.20%	4	0.18%	0	0.18%	0	0.04%
Framing of Car	0	0.00%	0	0.00%	0	0.00%	0	0.00%	0	0.04%
Data Error	0	0.00%	0	0.20%	12	0.55%	1	0.55%	0	0.08%
Exposure	0	0.00%	0	0.00%	0	0.00%	0	0.00%	0	0.16%
Equipment Malfunction	0	0.00%	0	0.00%	5	0.23%	0	0.23%	0	0.00%
LASD Return	11	6.92%	7	4.39%	115	5.24%	10	5.24%	6	2.89%
ACS Expired	0	0.00%	0	0.20%	4	0.18%	0	0.18%	3	1.65%
Total	11	6.92%	9	5.19%	153	6.97%	13	6.97%	13	6.26%



expertise in action™

Los Angeles County MTA Orange Line Approach Summary Report Location 1342: SB Sepulveda Blvd @ Busway

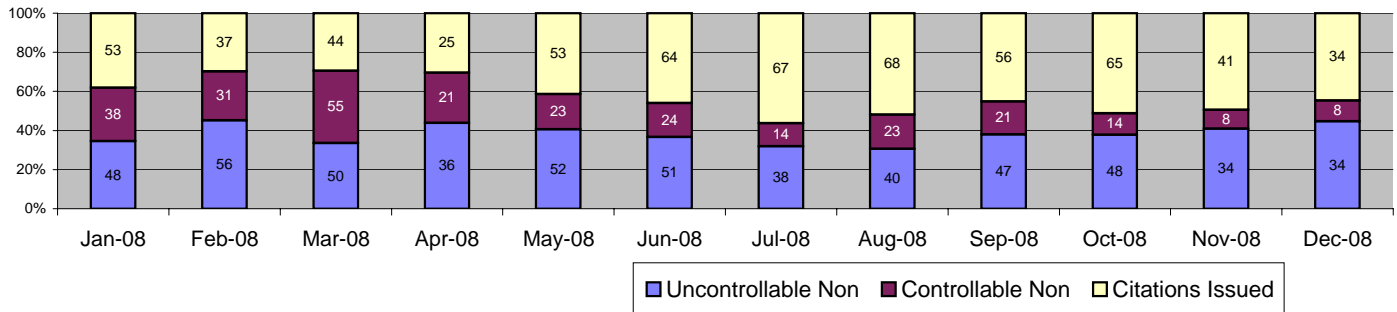


Events	Dec-08		3 Month Average		Year to Date Total		Year to Date Average		2007 Average	
	Quantity	% of Events	Quantity	% of Events	Quantity	% of Events	Quantity	% of Events	Quantity	% of Events
Non Violations	15	9.32%	16	9.91%	193	8.56%	16	8.56%	15	6.53%
Violations	146	90.68%	165	90.97%	2,061	91.44%	172	91.44%	211	93.47%
Total Events	161	100.00%	181	100.00%	2,254	100.00%	188	100.00%	226	100.00%
<i>Violations</i>	<i>Quantity</i>	<i>% of Viol</i>	<i>Quantity</i>	<i>% of Viol</i>	<i>Quantity</i>	<i>% of Viol</i>	<i>Quantity</i>	<i>% of Viol</i>	<i>Quantity</i>	<i>% of Viol</i>
Uncont. Non-Issued Viol	57	39.04%	53	32.26%	794	38.52%	66	38.52%	68	32.15%
Cont. Non-Issued Viol	19	13.01%	15	9.07%	306	14.85%	26	14.85%	14	6.79%
Citations	70	47.95%	97	33.00%	961	46.63%	80	46.63%	129	61.06%
Av. Violation Speed	35.40		35.28		35.40		35.40		34.73	
Av. Issued Speed	35.24		35.74		35.81		35.81		34.90	
Av. Violation Sec.	0.68		1.04		0.94		0.94		0.89	
Av. Issued Sec.	0.53		0.87		0.84		0.84		0.69	
Cal. Days/Enforc. Days	31	31	30	30	366	366	31	31	30	30
Daily Citation Yield	2.26	2.26	3.20	3.20	2.63	2.63	2.63	2.63	4.24	4.24
Cit /Viol. Iss. Rate	48%		59%		47%		47%		61%	
Prosecut. Iss. Rate	79%		87%		76%		76%		90%	
<i>Non - Violations</i>	<i>Quantity</i>	<i>% of Events</i>	<i>Quantity</i>	<i>% of Events</i>	<i>Quantity</i>	<i>% of Events</i>	<i>Quantity</i>	<i>% of Events</i>	<i>Quantity</i>	<i>% of Events</i>
Rear Axle Violation	0	0.00%	0	0.18%	3	0.13%	0	0.13%	1	0.55%
Right Turn	1	0.62%	1	0.55%	8	0.35%	1	0.35%	0	0.07%
No Violation Occurred	14	8.70%	14	7.92%	182	8.07%	15	8.07%	13	5.91%
Total Non Violations	15	9.32%	16	8.66%	193	8.56%	16	8.56%	15	6.53%
<i>Non - Issued</i>	<i>Quantity</i>	<i>% of Viol</i>	<i>Quantity</i>	<i>% of Viol</i>	<i>Quantity</i>	<i>% of Viol</i>	<i>Quantity</i>	<i>% of Viol</i>	<i>Quantity</i>	<i>% of Viol</i>
No Plate	24	16.44%	22	13.31%	287	13.93%	24	13.93%	33	15.64%
Out of State Plate	0	0.00%	4	2.22%	34	1.65%	3	1.65%	4	2.09%
Glare on Plate	0	0.00%	0	0.20%	1	0.05%	0	0.05%	1	0.32%
Illegible Plate	0	0.00%	0	0.20%	5	0.24%	0	0.24%	1	0.43%
Plate Obstructed	0	0.00%	0	0.20%	12	0.58%	1	0.58%	3	1.22%
Windshield Glare	14	9.59%	8	4.64%	210	10.19%	18	10.19%	1	0.28%
Driver Obstructed	0	0.00%	1	0.60%	26	1.26%	2	1.26%	0	0.20%
Car Obstructed	5	3.42%	3	1.61%	35	1.70%	3	1.70%	3	1.54%
Emergency Vehicle	2	1.37%	4	2.22%	31	1.50%	3	1.50%	3	1.26%
No DMV Match Found	12	8.22%	11	6.85%	145	7.04%	12	7.04%	19	9.00%
LASD Expired	0	0.00%	0	0.00%	7	0.34%	1	0.34%	0	0.16%
Other	0	0.00%	0	0.20%	1	0.05%	0	0.05%	0	0.00%
Total	57	39.04%	53	32.26%	80	38.52%	66	38.52%	68	32.15%
Framing of Plate	0	0.00%	0	0.00%	1	0.05%	0	0.05%	1	0.24%
Focus / Clarity of Plate	0	0.00%	0	0.20%	1	0.05%	0	0.05%	1	0.28%
Dark Interior	4	2.74%	2	1.41%	121	5.87%	10	5.87%	0	0.12%
Framing of Driver	0	0.00%	0	0.00%	2	0.10%	0	0.10%	0	0.00%
Focus / Clarity of Driver	2	1.37%	0	0.00%	8	0.39%	1	0.39%	1	0.24%
Framing of Car	1	0.68%	0	0.00%	1	0.05%	0	0.05%	0	0.08%
Data Error	0	0.00%	0	0.00%	0	0.00%	0	0.00%	3	1.62%
Exposure	1	0.68%	0	0.00%	3	0.15%	0	0.15%	0	0.08%
Equipment Malfunction	0	0.00%	0	0.00%	8	0.39%	1	0.39%	1	0.43%
LASD Return	11	7.53%	12	7.46%	160	7.76%	13	7.76%	5	2.13%
ACS Expired	0	0.00%	0	0.00%	1	0.05%	0	0.05%	3	1.58%
Total	19	13.01%	15	9.07%	306	14.85%	26	14.85%	14	6.79%



expertise in action™

Los Angeles County MTA Orange Line Approach Summary Report Location 1351: NB Woodley @ Busway

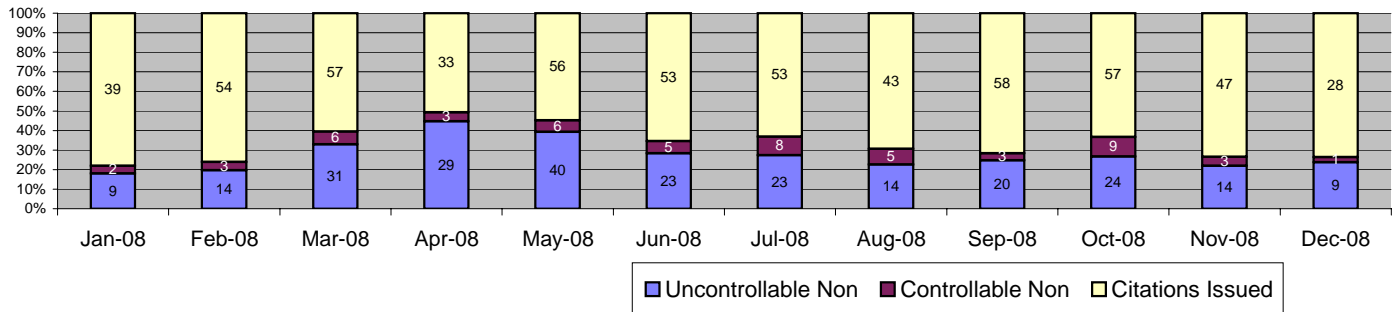


Events	Dec-08		3 Month Average		Year to Date Total		Year to Date Average		2007 Average	
	Quantity	% of Events	Quantity	% of Events	Quantity	% of Events	Quantity	% of Events	Quantity	% of Events
Non Violations	48	38.71%	56	17.11%	627	30.62%	52	30.62%	87	32.06%
Violations	76	61.29%	111	71.22%	1,421	69.38%	118	69.38%	185	67.94%
Total Events	124	100.00%	167	100.00%	2,048	100.00%	171	100.00%	272	100.00%
<i>Violations</i>	<i>Quantity</i>	<i>% of Viol</i>	<i>Quantity</i>	<i>% of Viol</i>	<i>Quantity</i>	<i>% of Viol</i>	<i>Quantity</i>	<i>% of Viol</i>	<i>Quantity</i>	<i>% of Viol</i>
Uncont. Non-Issued Viol	34	44.74%	43	38.62%	534	37.58%	45	37.58%	57	30.67%
Cont. Non-Issued Viol	8	10.53%	14	12.87%	280	19.70%	23	19.70%	32	17.50%
Citations	34	44.74%	54	33.81%	607	42.72%	51	42.72%	96	51.83%
Av. Violation Speed	19.46		19.60		19.81		19.81		20.93	
Av. Issued Speed	21.91		22.88		22.51		22.51		22.76	
Av. Violation Sec.	15.56		13.44		13.31		13.31		12.97	
Av. Issued Sec.	14.17		12.71		13.19		13.19		13.27	
Cal. Days/Enforc. Days	31	31	30	30	366	366	31	31	30	30
Daily Citation Yield	1.10	1.10	1.78	1.78	1.66	1.66	1.66	1.66	3.15	3.15
Cit /Viol. Iss. Rate	45%		49%		43%		43%		52%	
Prosecut. Iss. Rate	81%		79%		68%		68%		75%	
<i>Non - Violations</i>	<i>Quantity</i>	<i>% of Events</i>	<i>Quantity</i>	<i>% of Events</i>	<i>Quantity</i>	<i>% of Events</i>	<i>Quantity</i>	<i>% of Events</i>	<i>Quantity</i>	<i>% of Events</i>
Rear Axle Violation	0	0.00%	0	0.00%	0	0.00%	0	0.00%	0	0.03%
Right Turn	0	0.00%	0	0.00%	0	0.00%	0	0.00%	0	0.00%
No Violation Occurred	48	38.71%	56	33.47%	627	30.62%	57	33.40%	87	32.03%
Total Non Violations	48	38.71%	56	33.47%	627	30.62%	57	33.40%	87	32.06%
Non - Issued	<i>Quantity</i>	<i>% of Viol</i>	<i>Quantity</i>	<i>% of Viol</i>	<i>Quantity</i>	<i>% of Viol</i>	<i>Quantity</i>	<i>% of Viol</i>	<i>Quantity</i>	<i>% of Viol</i>
No Plate	10	13.16%	14	12.28%	169	11.89%	14	11.89%	25	13.76%
Out of State Plate	2	2.63%	1	0.90%	18	1.27%	2	1.27%	2	1.22%
Glare on Plate	0	0.00%	0	0.00%	2	0.14%	0	0.14%	0	0.14%
Illegible Plate	0	0.00%	0	0.30%	3	0.21%	0	0.21%	1	0.36%
Plate Obstructed	0	0.00%	1	0.90%	5	0.35%	0	0.35%	1	0.45%
Windshield Glare	6	7.89%	9	8.08%	154	10.84%	13	10.84%	6	3.47%
Driver Obstructed	0	0.00%	0	0.30%	6	0.42%	1	0.42%	0	0.09%
Car Obstructed	0	0.00%	0	0.00%	1	0.07%	0	0.07%	0	0.14%
Emergency Vehicle	2	2.63%	1	0.90%	16	1.13%	1	1.13%	2	0.99%
No DMV Match Found	6	7.89%	11	9.88%	128	9.01%	11	9.01%	18	9.56%
LASD Expired	0	0.00%	0	0.00%	4	0.28%	0	0.28%	1	0.45%
Other	8	10.53%	6	5.09%	28	1.97%	2	1.97%	0	0.05%
Total	34	44.74%	43	38.62%	80	37.58%	45	37.58%	57	30.67%
Framing of Plate	0	0.00%	0	0.30%	2	0.14%	0	0.14%	0	0.00%
Focus / Clarity of Plate	0	0.00%	0	0.30%	3	0.21%	0	0.21%	1	0.50%
Dark Interior	0	0.00%	0	0.30%	16	1.13%	1	1.13%	1	0.45%
Framing of Driver	0	0.00%	0	0.00%	25	1.76%	2	1.76%	0	0.23%
Focus / Clarity of Driver	2	2.63%	0	0.00%	3	0.21%	0	0.21%	0	0.23%
Framing of Car	0	0.00%	0	0.00%	3	0.21%	0	0.21%	1	0.54%
Data Error	0	0.00%	7	5.99%	135	9.50%	11	9.50%	15	8.03%
Exposure	0	0.00%	0	0.30%	2	0.14%	0	0.14%	1	0.54%
Equipment Malfunction	0	0.00%	0	0.00%	0	0.00%	0	0.00%	0	0.05%
LASD Return	5	6.58%	6	5.39%	88	6.19%	7	6.19%	9	4.87%
ACS Expired	1	1.32%	0	0.30%	3	0.21%	0	0.21%	4	2.07%
Total	8	10.53%	14	12.87%	280	19.70%	23	19.70%	32	17.50%



expertise in action™

Los Angeles County MTA Orange Line Approach Summary Report Location 1352: SB Woodley @ Busway

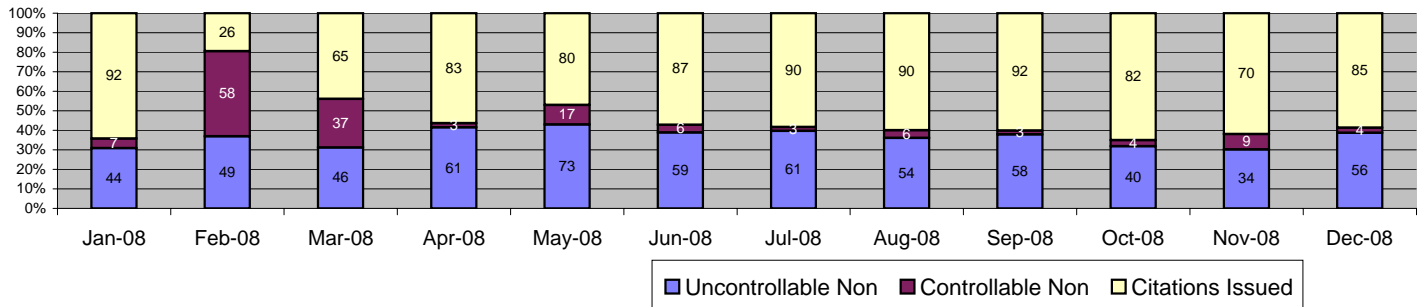


Events	Dec-08		3 Month Average		Year to Date Total		Year to Date Average		2007 Average	
	Quantity	% of Events	Quantity	% of Events	Quantity	% of Events	Quantity	% of Events	Quantity	% of Events
Non Violations	8	17.39%	12	11.11%	121	12.06%	10	12.06%	11	11.49%
Violations	38	82.61%	78	88.62%	882	87.94%	74	87.94%	85	88.51%
Total Events	46	100.00%	90	100.00%	1,003	100.00%	84	100.00%	97	100.00%
<i>Violations</i>	<i>Quantity</i>	<i>% of Viol</i>	<i>Quantity</i>	<i>% of Viol</i>	<i>Quantity</i>	<i>% of Viol</i>	<i>Quantity</i>	<i>% of Viol</i>	<i>Quantity</i>	<i>% of Viol</i>
Uncont. Non-Issued Viol	9	23.68%	19	24.68%	250	28.34%	21	28.34%	22	26.24%
Cont. Non-Issued Viol	1	2.63%	5	6.38%	54	6.12%	5	6.12%	3	3.41%
Citations	28	73.68%	54	55.44%	578	65.53%	48	65.53%	60	70.34%
Av. Violation Speed	20.92		20.60		20.72		20.72		21.06	
Av. Issued Speed	20.46		20.85		20.68		20.68		20.99	
Av. Violation Sec.	2.50		2.40		2.65		2.65		2.58	
Av. Issued Sec.	2.03		2.34		2.59		2.59		2.41	
Cal. Days/Enforc. Days	31	31	30	30	366	366	31	31	30	30
Daily Citation Yield	0.90	0.90	1.78	1.78	1.58	1.58	1.58	1.58	1.98	1.98
Cit /Viol. Iss. Rate	74%		69%		66%		66%		70%	
Prosecut. Iss. Rate	97%		92%		91%		91%		95%	
Non - Violations	Dec-08		3 Month Average		Year to Date Total		Year to Date Average		2007 Average	
	Quantity	% of Events	Quantity	% of Events	Quantity	% of Events	Quantity	% of Events	Quantity	% of Events
Rear Axle Violation	0	0.00%	0	0.37%	7	0.70%	1	0.70%	1	0.78%
Right Turn	0	0.00%	0	0.00%	0	0.00%	0	0.00%	0	0.09%
No Violation Occurred	8	17.39%	12	12.92%	114	11.37%	10	11.37%	10	10.62%
Total Non Violations	8	17.39%	12	13.28%	121	12.06%	10	12.06%	11	11.49%
Non - Issued	Quantity	% of Viol	Quantity	% of Viol	Quantity	% of Viol	Quantity	% of Viol	Quantity	% of Viol
No Plate	8	21.05%	8	10.64%	92	10.43%	8	10.43%	10	12.10%
Out of State Plate	0	0.00%	3	3.83%	24	2.72%	2	2.72%	1	1.37%
Glare on Plate	0	0.00%	0	0.00%	0	0.00%	0	0.00%	0	0.00%
Illegible Plate	0	0.00%	0	0.00%	2	0.23%	0	0.23%	0	0.39%
Plate Obstructed	0	0.00%	0	0.00%	2	0.23%	0	0.23%	1	0.68%
Windshield Glare	0	0.00%	1	1.70%	30	3.40%	3	3.40%	0	0.39%
Driver Obstructed	0	0.00%	1	0.85%	18	2.04%	2	2.04%	0	0.00%
Car Obstructed	0	0.00%	0	0.00%	2	0.23%	0	0.23%	1	0.98%
Emergency Vehicle	0	0.00%	1	0.85%	11	1.25%	1	1.25%	0	0.39%
No DMV Match Found	1	2.63%	5	6.38%	67	7.60%	6	7.60%	8	9.66%
LASD Expired	0	0.00%	0	0.00%	1	0.11%	0	0.11%	0	0.29%
Other	0	0.00%	0	0.43%	1	0.11%	0	0.11%	0	0.00%
Total	9	23.68%	19	24.68%	80	28.34%	21	28.34%	22	26.24%
Framing of Plate	0	0.00%	0	0.00%	0	0.00%	0	0.00%	0	0.00%
Focus / Clarity of Plate	0	0.00%	0	0.00%	0	0.00%	0	0.00%	0	0.00%
Dark Interior	0	0.00%	0	0.00%	1	0.11%	0	0.11%	0	0.10%
Framing of Driver	0	0.00%	0	0.00%	0	0.00%	0	0.00%	0	0.00%
Focus / Clarity of Driver	0	0.00%	0	0.00%	0	0.00%	0	0.00%	0	0.10%
Framing of Car	0	0.00%	0	0.00%	0	0.00%	0	0.00%	0	0.00%
Data Error	0	0.00%	0	0.00%	0	0.00%	0	0.00%	0	0.00%
Exposure	0	0.00%	0	0.00%	3	0.34%	0	0.34%	0	0.39%
Equipment Malfunction	0	0.00%	3	3.40%	8	0.91%	1	0.91%	0	0.10%
LASD Return	1	2.63%	2	2.55%	41	4.65%	3	4.65%	1	1.17%
ACS Expired	0	0.00%	0	0.43%	1	0.11%	0	0.11%	1	1.56%
Total	1	2.63%	5	6.38%	54	6.12%	5	6.12%	3	3.41%



expertise in action™

Los Angeles County MTA Orange Line Approach Summary Report Location 1361: NB Balboa Blvd @ Busway

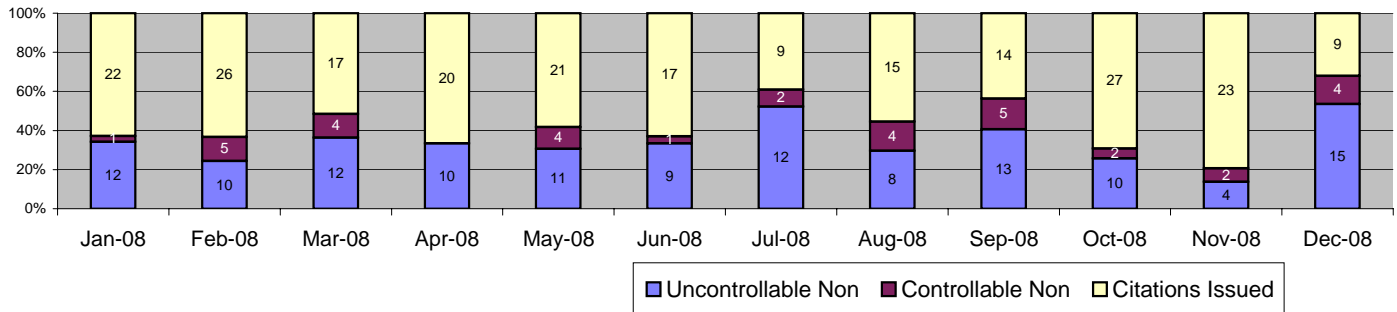


Events	Dec-08		3 Month Average		Year to Date Total		Year to Date Average		2007 Average	
	Quantity	% of Events	Quantity	% of Events	Quantity	% of Events	Quantity	% of Events	Quantity	% of Events
Non Violations	0	0.00%	39	30.04%	556	24.28%	46	24.28%	49	22.06%
Violations	145	100.00%	131	71.48%	1,734	75.72%	145	75.72%	174	77.94%
Total Events	145	100.00%	170	100.00%	2,290	100.00%	191	100.00%	223	100.00%
<i>Violations</i>	<i>Quantity</i>	<i>% of Viol</i>	<i>Quantity</i>	<i>% of Viol</i>	<i>Quantity</i>	<i>% of Viol</i>	<i>Quantity</i>	<i>% of Viol</i>	<i>Quantity</i>	<i>% of Viol</i>
Uncont. Non-Issued Viol	56	38.62%	44	33.67%	635	36.62%	53	36.62%	51	29.06%
Cont. Non-Issued Viol	4	2.76%	5	4.08%	157	9.05%	13	9.05%	11	6.43%
Citations	85	58.62%	81	49.15%	942	54.33%	79	54.33%	112	64.51%
Av. Violation Speed	27.22		28.68		28.65		28.65		28.13	
Av. Issued Speed	27.02		28.70		28.58		28.58		28.23	
Av. Violation Sec.	8.96		9.96		9.71		9.71		8.45	
Av. Issued Sec.	9.87		9.73		10.00		10.00		7.78	
Cal. Days/Enforc. Days	31	31	30	30	366	366	31	31	30	30
Daily Citation Yield	2.74	2.74	2.68	2.68	2.57	2.57	2.57	2.57	3.68	3.68
Cit /Viol. Iss. Rate	59%		62%		54%		54%		65%	
Prosecut. Iss. Rate	96%		94%		86%		86%		91%	
<i>Non - Violations</i>	<i>Quantity</i>	<i>% of Events</i>	<i>Quantity</i>	<i>% of Events</i>	<i>Quantity</i>	<i>% of Events</i>	<i>Quantity</i>	<i>% of Events</i>	<i>Quantity</i>	<i>% of Events</i>
Rear Axle Violation		0.00%	0	0.00%	2	0.09%	0	0.10%	0	0.07%
Right Turn		0.00%	0	0.00%	1	0.04%	0	0.05%	0	0.04%
No Violation Occurred		0.00%	39	22.99%	553	24.15%	50	26.34%	49	21.94%
Total Non Violations	0	0.00%	39	22.99%	556	24.28%	51	26.49%	49	22.06%
<i>Non - Issued</i>	<i>Quantity</i>	<i>% of Viol</i>	<i>Quantity</i>	<i>% of Viol</i>	<i>Quantity</i>	<i>% of Viol</i>	<i>Quantity</i>	<i>% of Viol</i>	<i>Quantity</i>	<i>% of Viol</i>
No Plate	21	14.48%	20	15.05%	253	14.59%	21	14.59%	26	14.96%
Out of State Plate	3	2.07%	2	1.53%	24	1.38%	2	1.38%	2	0.96%
Glare on Plate	0	0.00%	0	0.26%	4	0.23%	0	0.23%	0	0.24%
Illegible Plate	2	1.38%	1	0.51%	7	0.40%	1	0.40%	0	0.10%
Plate Obstructed	2	1.38%	0	0.26%	7	0.40%	1	0.40%	0	0.19%
Windshield Glare	6	4.14%	7	5.61%	146	8.42%	12	8.42%	2	0.91%
Driver Obstructed	0	0.00%	1	0.77%	20	1.15%	2	1.15%	0	0.19%
Car Obstructed	2	1.38%	1	0.51%	9	0.52%	1	0.52%	0	0.24%
Emergency Vehicle	3	2.07%	3	2.04%	33	1.90%	3	1.90%	4	2.35%
No DMV Match Found	17	11.72%	9	7.14%	124	7.15%	10	7.15%	15	8.49%
LASD Expired	0	0.00%	0	0.00%	7	0.40%	1	0.40%	1	0.43%
Other	0	0.00%	0	0.00%	1	0.06%	0	0.06%	0	0.00%
Total	56	38.62%	44	33.67%	80	36.62%	53	36.62%	51	29.06%
Framing of Plate	0	0.00%	0	0.00%	0	0.00%	0	0.00%	0	0.19%
Focus / Clarity of Plate	1	0.69%	1	0.51%	6	0.35%	1	0.35%	1	0.53%
Dark Interior	0	0.00%	0	0.26%	20	1.15%	2	1.15%	0	0.05%
Framing of Driver	0	0.00%	0	0.00%	4	0.23%	0	0.23%	0	0.10%
Focus / Clarity of Driver	0	0.00%	0	0.00%	1	0.06%	0	0.06%	0	0.14%
Framing of Car	0	0.00%	0	0.00%	2	0.12%	0	0.12%	0	0.10%
Data Error	0	0.00%	0	0.00%	0	0.00%	0	0.00%	2	1.25%
Exposure	0	0.00%	0	0.00%	0	0.00%	0	0.00%	1	0.43%
Equipment Malfunction	0	0.00%	0	0.00%	52	3.00%	4	3.00%	0	0.00%
LASD Return	3	2.07%	4	3.32%	70	4.04%	6	4.04%	3	1.77%
ACS Expired	0	0.00%	0	0.00%	2	0.12%	0	0.12%	3	1.87%
Total	4	2.76%	5	4.08%	157	9.05%	13	9.05%	11	6.43%



expertise in action™

Los Angeles County MTA Orange Line Approach Summary Report Location 1362: SB Balboa Blvd @ Busway

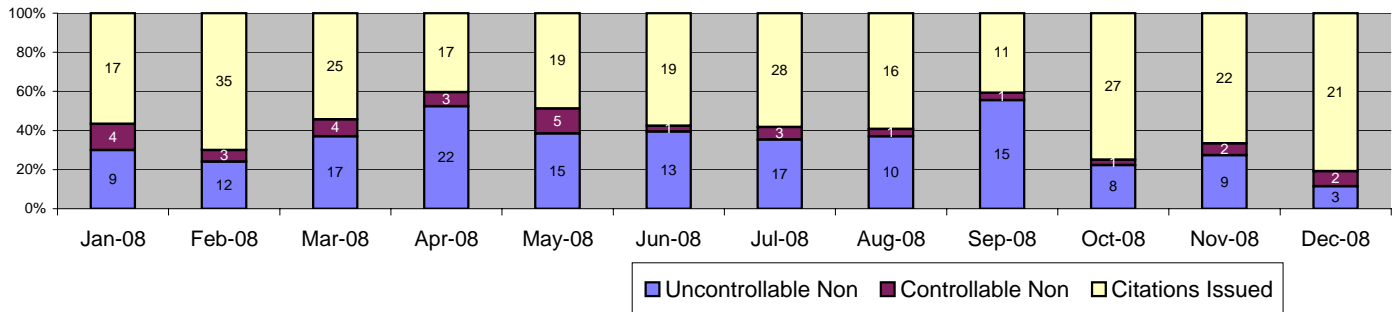


Events	Dec-08		3 Month Average		Year to Date Total		Year to Date Average		2007 Average	
	Quantity	% of Events	Quantity	% of Events	Quantity	% of Events	Quantity	% of Events	Quantity	% of Events
Non Violations	2	6.67%	2	35.93%	115	23.23%	10	23.23%	4	8.73%
Violations	28	93.33%	33	64.36%	380	76.77%	32	76.77%	44	91.27%
Total Events	30	100.00%	35	100.00%	495	100.00%	41	100.00%	48	100.00%
<i>Violations</i>	<i>Quantity</i>	<i>% of Viol</i>	<i>Quantity</i>	<i>% of Viol</i>	<i>Quantity</i>	<i>% of Viol</i>	<i>Quantity</i>	<i>% of Viol</i>	<i>Quantity</i>	<i>% of Viol</i>
Uncont. Non-Issued Viol	15	53.57%	9	27.00%	126	33.16%	11	33.16%	13	30.02%
Cont. Non-Issued Viol	4	14.29%	3	9.00%	34	8.95%	3	8.95%	3	7.27%
Citations	9	32.14%	21	58.84%	220	57.89%	18	57.89%	27	62.72%
Av. Violation Speed	29.54		27.73		28.00		28.00		29.58	
Av. Issued Speed	27.67		27.83		28.01		28.01		29.63	
Av. Violation Sec.	2.14		2.19		2.09		2.09		2.44	
Av. Issued Sec.	1.67		1.82		1.91		1.91		2.20	
Cal. Days/Enforc. Days	31	31	30	30	366	366	31	31	30	30
Daily Citation Yield	0.29	0.29	0.70	0.70	0.60	0.60	0.60	0.60	0.90	0.90
Cit /Viol. Iss. Rate	32%		64%		58%		58%		63%	
Prosecut. Iss. Rate	69%		88%		87%		87%		90%	
<i>Non - Violations</i>	<i>Quantity</i>	<i>% of Events</i>	<i>Quantity</i>	<i>% of Events</i>	<i>Quantity</i>	<i>% of Events</i>	<i>Quantity</i>	<i>% of Events</i>	<i>Quantity</i>	<i>% of Events</i>
Rear Axle Violation	0	0.00%	0	0.00%	1	0.20%	0	0.20%	0	0.00%
Right Turn	0	0.00%	0	0.00%	0	0.00%	0	0.00%	0	0.00%
No Violation Occurred	2	6.67%	2	5.66%	114	23.03%	10	23.03%	4	8.73%
Total Non Violations	2	6.67%	2	5.66%	115	23.23%	10	23.23%	4	8.73%
Non - Issued	<i>Quantity</i>	<i>% of Viol</i>	<i>Quantity</i>	<i>% of Viol</i>	<i>Quantity</i>	<i>% of Viol</i>	<i>Quantity</i>	<i>% of Viol</i>	<i>Quantity</i>	<i>% of Viol</i>
No Plate	6	21.43%	4	11.00%	47	12.37%	4	12.37%	5	11.85%
Out of State Plate	0	0.00%	0	0.00%	5	1.32%	0	1.32%	0	0.57%
Glare on Plate	3	10.71%	2	6.00%	10	2.63%	1	2.63%	1	1.72%
Illegible Plate	0	0.00%	0	0.00%	2	0.53%	0	0.53%	0	0.57%
Plate Obstructed	0	0.00%	0	1.00%	1	0.26%	0	0.26%	0	0.38%
Windshield Glare	1	3.57%	0	0.00%	20	5.26%	2	5.26%	0	0.38%
Driver Obstructed	0	0.00%	0	0.00%	4	1.05%	0	1.05%	0	0.00%
Car Obstructed	1	3.57%	0	1.00%	4	1.05%	0	1.05%	1	1.91%
Emergency Vehicle	2	7.14%	1	2.00%	7	1.84%	1	1.84%	1	1.53%
No DMV Match Found	2	7.14%	2	6.00%	25	6.58%	2	6.58%	5	10.71%
LASD Expired	0	0.00%	0	0.00%	1	0.26%	0	0.26%	0	0.38%
Other	0	0.00%	0	0.00%	0	0.00%	0	0.00%	0	0.00%
Total	15	53.57%	9	27.00%	80	33.16%	11	33.16%	13	30.02%
Framing of Plate	0	0.00%	0	0.00%	0	0.00%	0	0.00%	0	0.00%
Focus / Clarity of Plate	2	7.14%	1	4.00%	8	2.11%	1	2.11%	1	1.53%
Dark Interior	0	0.00%	0	0.00%	1	0.26%	0	0.26%	1	1.53%
Framing of Driver	0	0.00%	0	0.00%	0	0.00%	0	0.00%	0	0.00%
Focus / Clarity of Driver	0	0.00%	0	1.00%	2	0.53%	0	0.53%	0	0.19%
Framing of Car	0	0.00%	0	0.00%	0	0.00%	0	0.00%	0	0.00%
Data Error	0	0.00%	0	0.00%	1	0.26%	0	0.26%	0	0.57%
Exposure	0	0.00%	0	1.00%	1	0.26%	0	0.26%	0	0.19%
Equipment Malfunction	0	0.00%	0	0.00%	0	0.00%	0	0.00%	0	0.00%
LASD Return	2	7.14%	1	3.00%	21	5.53%	2	5.53%	1	1.34%
ACS Expired	0	0.00%	0	0.00%	0	0.00%	0	0.00%	1	1.91%
Total	4	14.29%	3	9.00%	34	8.95%	3	8.95%	3	7.27%



expertise in action™

Los Angeles County MTA Orange Line Approach Summary Report Location 1371: NB White Oak Ave @ Busway

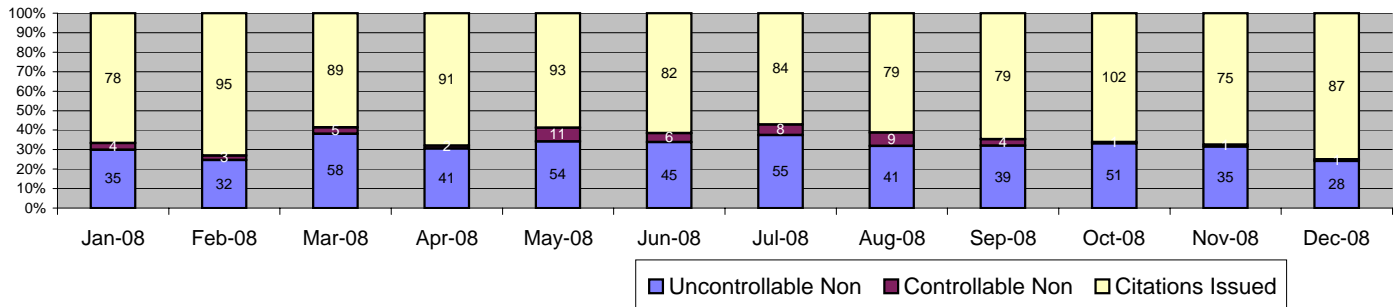


Events	Dec-08		3 Month Average		Year to Date Total		Year to Date Average		2007 Average	
	Quantity	% of Events	Quantity	% of Events	Quantity	% of Events	Quantity	% of Events	Quantity	% of Events
Non Violations	7	21.21%	2	11.29%	45	9.34%	4	9.34%	4	6.36%
Violations	26	78.79%	32	92.17%	437	90.66%	36	90.66%	55	93.64%
Total Events	33	100.00%	34	100.00%	482	100.00%	40	100.00%	59	100.00%
<i>Violations</i>	<i>Quantity</i>	<i>% of Viol</i>	<i>Quantity</i>	<i>% of Viol</i>	<i>Quantity</i>	<i>% of Viol</i>	<i>Quantity</i>	<i>% of Viol</i>	<i>Quantity</i>	<i>% of Viol</i>
Uncont. Non-Issued Viol	3	11.54%	11	33.33%	150	34.32%	13	34.32%	16	29.46%
Cont. Non-Issued Viol	2	7.69%	1	4.17%	30	6.86%	3	6.86%	3	4.98%
Citations	21	80.77%	20	47.85%	257	58.81%	21	58.81%	36	65.56%
Av. Violation Speed	16.88		19.21		19.08		19.08		19.33	
Av. Issued Speed	16.81		19.80		19.13		19.13		19.29	
Av. Violation Sec.	7.65		7.33		6.50		6.50		5.66	
Av. Issued Sec.	7.36		7.82		5.93		5.93		5.22	
Cal. Days/Enforc. Days	31	31	30	30	366	366	31	31	30	30
Daily Citation Yield	0.68	0.68	0.66	0.66	0.70	0.70	0.70	0.70	1.19	1.19
Cit /Viol. Iss. Rate	81%		63%		59%		59%		66%	
Prosecut. Iss. Rate	91%		94%		90%		90%		93%	
<i>Non - Violations</i>	<i>Quantity</i>	<i>% of Events</i>	<i>Quantity</i>	<i>% of Events</i>	<i>Quantity</i>	<i>% of Events</i>	<i>Quantity</i>	<i>% of Events</i>	<i>Quantity</i>	<i>% of Events</i>
Rear Axle Violation	1	3.03%	0	0.00%	1	0.21%	0	0.21%	0	0.57%
Right Turn	0	0.00%	0	0.00%	0	0.00%	0	0.00%	0	0.00%
No Violation Occurred	6	18.18%	2	6.80%	44	9.13%	4	9.13%	3	5.80%
Total Non Violations	7	21.21%	2	6.80%	45	9.34%	4	9.34%	4	6.36%
Non - Issued	<i>Quantity</i>	<i>% of Viol</i>	<i>Quantity</i>	<i>% of Viol</i>	<i>Quantity</i>	<i>% of Viol</i>	<i>Quantity</i>	<i>% of Viol</i>	<i>Quantity</i>	<i>% of Viol</i>
No Plate	2	7.69%	5	15.63%	57	13.04%	5	13.04%	8	13.75%
Out of State Plate	0	0.00%	0	1.04%	3	0.69%	0	0.69%	1	1.06%
Glare on Plate	0	0.00%	0	0.00%	0	0.00%	0	0.00%	0	0.00%
Illegible Plate	0	0.00%	0	0.00%	0	0.00%	0	0.00%	0	0.00%
Plate Obstructed	0	0.00%	0	0.00%	4	0.92%	0	0.92%	0	0.60%
Windshield Glare	1	3.85%	2	6.25%	50	11.44%	4	11.44%	2	2.72%
Driver Obstructed	0	0.00%	0	0.00%	3	0.69%	0	0.69%	0	0.00%
Car Obstructed	0	0.00%	0	0.00%	1	0.23%	0	0.23%	0	0.15%
Emergency Vehicle	0	0.00%	1	4.17%	5	1.14%	0	1.14%	1	1.21%
No DMV Match Found	0	0.00%	2	6.25%	26	5.95%	2	5.95%	5	9.67%
LASD Expired	0	0.00%	0	0.00%	1	0.23%	0	0.23%	0	0.30%
Other	0	0.00%	0	0.00%	0	0.00%	0	0.00%	0	0.00%
Total	3	11.54%	11	33.33%	80	34.32%	13	34.32%	16	29.46%
Framing of Plate	0	0.00%	0	0.00%	0	0.00%	0	0.00%	0	0.00%
Focus / Clarity of Plate	0	0.00%	0	0.00%	0	0.00%	0	0.00%	0	0.30%
Dark Interior	0	0.00%	0	0.00%	0	0.00%	0	0.00%	0	0.30%
Framing of Driver	0	0.00%	0	0.00%	0	0.00%	0	0.00%	0	0.00%
Focus / Clarity of Driver	0	0.00%	0	0.00%	0	0.00%	0	0.00%	0	0.00%
Framing of Car	0	0.00%	0	0.00%	0	0.00%	0	0.00%	0	0.00%
Data Error	0	0.00%	0	0.00%	0	0.00%	0	0.00%	0	0.15%
Exposure	0	0.00%	0	0.00%	0	0.00%	0	0.00%	0	0.15%
Equipment Malfunction	0	0.00%	0	0.00%	0	0.00%	0	0.00%	0	0.00%
LASD Return	2	7.69%	1	4.17%	30	6.86%	3	6.86%	2	3.32%
ACS Expired	0	0.00%	0	0.00%	0	0.00%	0	0.00%	0	0.76%
Total	2	7.69%	1	4.17%	30	6.86%	3	6.86%	3	4.98%



expertise in action™

Los Angeles County MTA Orange Line Approach Summary Report Location 1372: SB White Oak Ave @ Busway

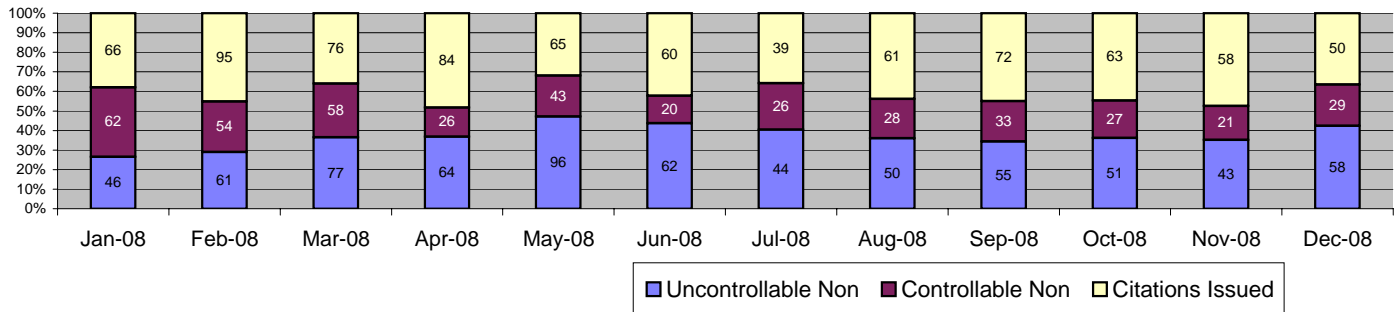


Events	Dec-08		3 Month Average		Year to Date Total		Year to Date Average		2007 Average	
	Quantity	% of Events	Quantity	% of Events	Quantity	% of Events	Quantity	% of Events	Quantity	% of Events
Non Violations	57	32.95%	54	29.60%	647	28.76%	54	28.76%	51	23.55%
Violations	116	67.05%	129	71.36%	1,603	71.24%	134	71.24%	165	76.45%
Total Events	173	100.00%	183	100.00%	2,250	100.00%	188	100.00%	216	100.00%
<i>Violations</i>	<i>Quantity</i>	<i>% of Viol</i>	<i>Quantity</i>	<i>% of Viol</i>	<i>Quantity</i>	<i>% of Viol</i>	<i>Quantity</i>	<i>% of Viol</i>	<i>Quantity</i>	<i>% of Viol</i>
Uncont. Non-Issued Viol	28	24.14%	42	32.30%	514	32.06%	43	32.06%	46	27.89%
Cont. Non-Issued Viol	1	0.86%	2	1.55%	55	3.43%	5	3.43%	17	10.09%
Citations	87	75.00%	85	61.77%	1,034	64.50%	86	64.50%	103	62.03%
Av. Violation Speed	33.26		32.59		32.58		32.58		31.98	
Av. Issued Speed	33.08		31.78		32.63		32.63		32.14	
Av. Violation Sec.	2.54		2.49		2.60		2.60		2.68	
Av. Issued Sec.	2.19		2.49		2.26		2.26		2.59	
Cal. Days/Enforc. Days	31	31	30	30	366	366	31	31	30	30
Daily Citation Yield	2.81	2.81	2.81	2.81	2.83	2.83	2.83	2.83	3.27	3.27
Cit /Viol. Iss. Rate	75%		66%		65%		65%		62%	
Prosecut. Iss. Rate	99%		98%		95%		95%		86%	
<i>Non - Violations</i>	<i>Quantity</i>	<i>% of Events</i>	<i>Quantity</i>	<i>% of Events</i>	<i>Quantity</i>	<i>% of Events</i>	<i>Quantity</i>	<i>% of Events</i>	<i>Quantity</i>	<i>% of Events</i>
Rear Axle Violation	0	0.00%	0	0.18%	21	0.93%	2	0.93%	0	0.00%
Right Turn	0	0.00%	0	0.00%	1	0.04%	0	0.04%	0	0.00%
No Violation Occurred	57	32.95%	53	29.20%	625	27.78%	52	27.78%	51	23.55%
Total Non Violations	57	32.95%	54	29.38%	647	28.76%	54	28.76%	51	23.55%
Non - Issued	<i>Quantity</i>	<i>% of Viol</i>	<i>Quantity</i>	<i>% of Viol</i>	<i>Quantity</i>	<i>% of Viol</i>	<i>Quantity</i>	<i>% of Viol</i>	<i>Quantity</i>	<i>% of Viol</i>
No Plate	17	14.66%	28	21.71%	282	17.59%	24	17.59%	26	15.68%
Out of State Plate	2	1.72%	3	2.58%	27	1.68%	2	1.68%	2	1.36%
Glare on Plate	0	0.00%	0	0.00%	1	0.06%	0	0.06%	0	0.25%
Illegible Plate	0	0.00%	1	0.52%	4	0.25%	0	0.25%	0	0.10%
Plate Obstructed	0	0.00%	0	0.00%	6	0.37%	1	0.37%	1	0.30%
Windshield Glare	1	0.86%	0	0.00%	21	1.31%	2	1.31%	0	0.10%
Driver Obstructed	0	0.00%	0	0.26%	29	1.81%	2	1.81%	0	0.05%
Car Obstructed	0	0.00%	0	0.26%	5	0.31%	0	0.31%	0	0.15%
Emergency Vehicle	5	4.31%	3	2.33%	44	2.74%	4	2.74%	3	1.77%
No DMV Match Found	3	2.59%	6	4.65%	92	5.74%	8	5.74%	13	7.61%
LASD Expired	0	0.00%	0	0.00%	3	0.19%	0	0.19%	1	0.45%
Other	0	0.00%	0	0.00%	0	0.00%	0	0.00%	0	0.05%
Total	28	24.14%	42	32.30%	80	32.06%	43	32.06%	46	27.89%
Framing of Plate	0	0.00%	0	0.00%	0	0.00%	0	0.00%	0	0.00%
Focus / Clarity of Plate	0	0.00%	0	0.00%	0	0.00%	0	0.00%	0	0.15%
Dark Interior	0	0.00%	0	0.00%	1	0.06%	0	0.06%	0	0.05%
Framing of Driver	0	0.00%	0	0.00%	0	0.00%	0	0.00%	0	0.00%
Focus / Clarity of Driver	0	0.00%	0	0.00%	2	0.12%	0	0.12%	0	0.05%
Framing of Car	0	0.00%	0	0.00%	1	0.06%	0	0.06%	0	0.05%
Data Error	0	0.00%	0	0.00%	0	0.00%	0	0.00%	0	0.05%
Exposure	0	0.00%	0	0.00%	0	0.00%	0	0.00%	0	0.25%
Equipment Malfunction	0	0.00%	1	0.52%	2	0.12%	0	0.12%	10	6.15%
LASD Return	1	0.86%	1	1.03%	48	2.99%	4	2.99%	2	1.46%
ACS Expired	0	0.00%	0	0.00%	1	0.06%	0	0.06%	3	1.87%
Total	1	0.86%	2	1.55%	55	3.43%	5	3.43%	17	10.09%



expertise in action™

Los Angeles County MTA Orange Line Approach Summary Report Location 1382: SB Lindley Ave @ Busway

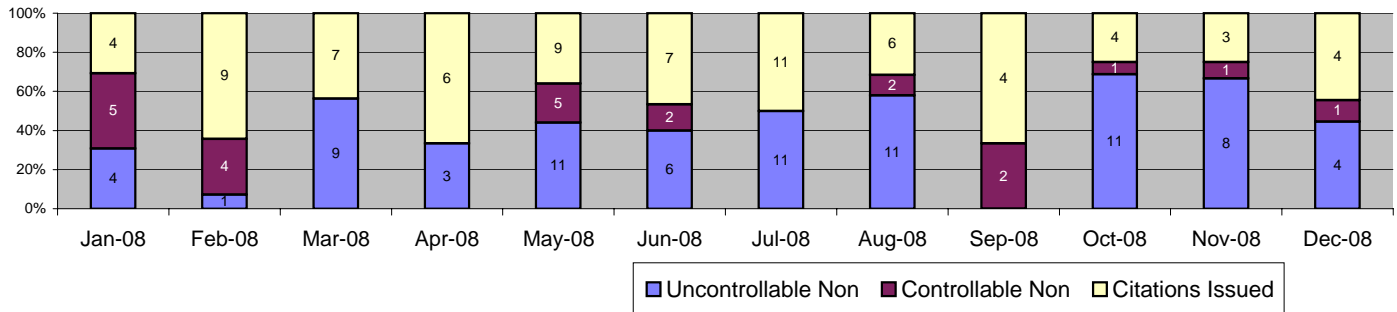


Events	Dec-08		3 Month Average		Year to Date Total		Year to Date Average		2007 Average	
	Quantity	% of Events	Quantity	% of Events	Quantity	% of Events	Quantity	% of Events	Quantity	% of Events
Non Violations	242	63.85%	241	58.22%	2,900	60.13%	242	60.13%	273	58.58%
Violations	137	36.15%	141	41.57%	1,923	39.87%	160	39.87%	193	41.42%
Total Events	379	100.00%	382	100.00%	4,823	100.00%	402	100.00%	467	100.00%
<i>Violations</i>	<i>Quantity</i>	<i>% of Viol</i>	<i>Quantity</i>	<i>% of Viol</i>	<i>Quantity</i>	<i>% of Viol</i>	<i>Quantity</i>	<i>% of Viol</i>	<i>Quantity</i>	<i>% of Viol</i>
Uncont. Non-Issued Viol	58	42.34%	50	35.22%	707	36.77%	59	36.77%	58	29.84%
Cont. Non-Issued Viol	29	21.17%	27	19.15%	427	22.20%	36	22.20%	32	16.60%
Citations	50	36.50%	64	38.72%	789	41.03%	66	41.03%	104	53.56%
Av. Violation Speed	29.61		30.20		30.75		30.75		30.79	
Av. Issued Speed	30.16		32.46		34.16		34.16		33.06	
Av. Violation Sec.	1.99		2.10		2.45		2.45		2.52	
Av. Issued Sec.	1.69		1.40		1.07		1.07		1.52	
Cal. Days/Enforc. Days	31	31	30	30	366	366	31	31	30	30
Daily Citation Yield	1.61	1.61	2.12	2.12	2.16	2.16	2.16	2.16	3.40	3.40
Cit /Viol. Iss. Rate	36%		46%		41%		41%		54%	
Prosecut. Iss. Rate	63%		70%		65%		65%		76%	
<i>Non - Violations</i>	<i>Quantity</i>	<i>% of Events</i>	<i>Quantity</i>	<i>% of Events</i>	<i>Quantity</i>	<i>% of Events</i>	<i>Quantity</i>	<i>% of Events</i>	<i>Quantity</i>	<i>% of Events</i>
Rear Axle Violation	3	0.79%	0	0.00%	4	0.08%	0	0.08%	0	0.02%
Right Turn	0	0.00%	0	0.00%	1	0.02%	0	0.02%	1	0.25%
No Violation Occurred	239	63.06%	241	63.09%	2,895	60.02%	241	60.02%	272	58.31%
Total Non Violations	242	63.85%	241	63.09%	2,900	60.13%	242	60.13%	273	58.58%
Non - Issued	<i>Quantity</i>	<i>% of Viol</i>	<i>Quantity</i>	<i>% of Viol</i>	<i>Quantity</i>	<i>% of Viol</i>	<i>Quantity</i>	<i>% of Viol</i>	<i>Quantity</i>	<i>% of Viol</i>
No Plate	14	10.22%	23	16.08%	313	16.28%	26	16.28%	32	16.47%
Out of State Plate	2	1.46%	1	0.71%	15	0.78%	1	0.78%	2	0.99%
Glare on Plate	16	11.68%	4	2.84%	36	1.87%	3	1.87%	3	1.34%
Illegible Plate	1	0.73%	0	0.24%	12	0.62%	1	0.62%	1	0.52%
Plate Obstructed	5	3.65%	1	0.71%	12	0.62%	1	0.62%	2	0.78%
Windshield Glare	8	5.84%	9	6.15%	150	7.80%	13	7.80%	1	0.56%
Driver Obstructed	3	2.19%	0	0.24%	26	1.35%	2	1.35%	0	0.13%
Car Obstructed	3	2.19%	2	1.18%	18	0.94%	2	0.94%	2	1.03%
Emergency Vehicle	1	0.73%	1	0.47%	24	1.25%	2	1.25%	1	0.65%
No DMV Match Found	5	3.65%	9	6.62%	98	5.10%	8	5.10%	12	6.21%
LASD Expired	0	0.00%	0	0.00%	3	0.16%	0	0.16%	2	1.12%
Other	0	0.00%	0	0.00%	0	0.00%	0	0.00%	0	0.04%
Total	58	42.34%	50	35.22%	80	36.77%	59	36.77%	58	29.84%
Framing of Plate	7	5.11%	12	8.75%	101	5.25%	8	5.25%	8	4.31%
Focus / Clarity of Plate	7	5.11%	1	0.95%	28	1.46%	2	1.46%	9	4.66%
Dark Interior	1	0.73%	3	1.89%	55	2.86%	5	2.86%	1	0.65%
Framing of Driver	1	0.73%	1	0.71%	27	1.40%	2	1.40%	1	0.26%
Focus / Clarity of Driver	2	1.46%	2	1.18%	27	1.40%	2	1.40%	1	0.69%
Framing of Car	4	2.92%	4	2.60%	36	1.87%	3	1.87%	2	1.21%
Data Error	0	0.00%	0	0.00%	2	0.10%	0	0.10%	2	0.82%
Exposure	0	0.00%	0	0.00%	0	0.00%	0	0.00%	0	0.09%
Equipment Malfunction	0	0.00%	0	0.00%	46	2.39%	4	2.39%	0	0.04%
LASD Return	7	5.11%	4	3.07%	101	5.25%	8	5.25%	6	2.85%
ACS Expired	0	0.00%	0	0.00%	4	0.21%	0	0.21%	2	1.03%
Total	29	21.17%	27	19.15%	427	22.20%	36	22.20%	32	16.60%



expertise in action™

Los Angeles County MTA Orange Line Approach Summary Report Location 1385: WB to NB Lindley Ave @ Busway

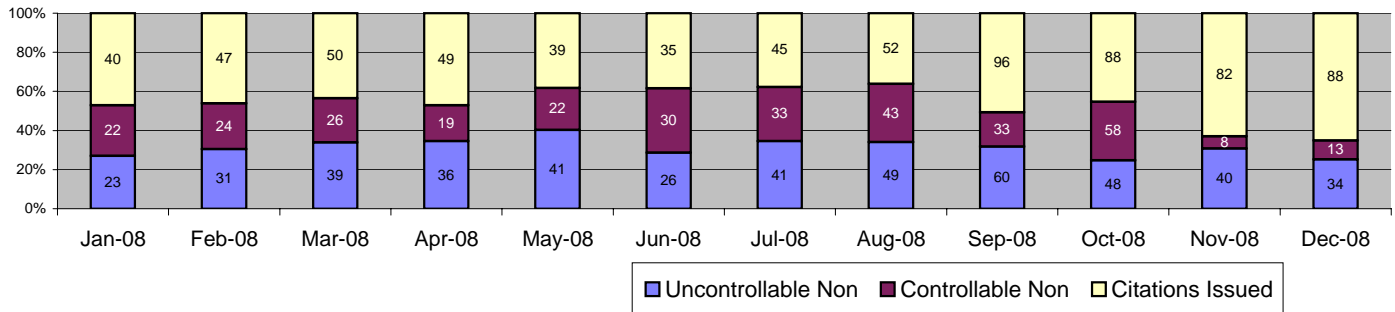


Events	Dec-08		3 Month Average		Year to Date Total		Year to Date Average		2007 Average	
	Quantity	% of Events	Quantity	% of Events	Quantity	% of Events	Quantity	% of Events	Quantity	% of Events
Non Violations	251	96.54%	291	96.74%	3,868	95.65%	322	95.65%	422	96.20%
Violations	9	3.46%	11	3.87%	176	4.35%	15	4.35%	17	3.80%
Total Events	260	100.00%	302	100.00%	4,044	100.00%	337	100.00%	439	100.00%
<i>Violations</i>	<i>Quantity</i>	<i>% of Viol</i>	<i>Quantity</i>	<i>% of Viol</i>	<i>Quantity</i>	<i>% of Viol</i>	<i>Quantity</i>	<i>% of Viol</i>	<i>Quantity</i>	<i>% of Viol</i>
Uncont. Non-Issued Viol	4	44.44%	6	55.88%	79	44.89%	7	44.89%	6	35.00%
Cont. Non-Issued Viol	1	11.11%	1	11.76%	23	13.07%	2	13.07%	2	14.00%
Citations	4	44.44%	4	48.81%	74	42.05%	6	42.05%	9	51.00%
Av. Violation Speed	19.11		18.17		18.73		18.73		18.89	
Av. Issued Speed	20.00		19.42		19.12		19.12		19.46	
Av. Violation Sec.	38.73		46.43		36.15		36.15		29.45	
Av. Issued Sec.	49.35		37.94		38.72		38.72		24.33	
Cal. Days/Enforc. Days	31	31	30	30	366	366	31	31	30	30
Daily Citation Yield	0.13	0.13	0.12	0.12	0.20	0.20	0.20	0.20	0.28	0.28
Cit /Viol. Iss. Rate	44%		32%		42%		42%		51%	
Prosecut. Iss. Rate	80%		73%		76%		76%		78%	
<i>Non - Violations</i>	<i>Quantity</i>	<i>% of Events</i>	<i>Quantity</i>	<i>% of Events</i>	<i>Quantity</i>	<i>% of Events</i>	<i>Quantity</i>	<i>% of Events</i>	<i>Quantity</i>	<i>% of Events</i>
Rear Axle Violation	0	0.00%	0	0.00%	0	0.00%	0	0.00%	0	0.00%
Right Turn	0	0.00%	1	0.33%	3	0.07%	0	0.07%	0	0.00%
No Violation Occurred	251	96.54%	290	95.92%	3,865	95.57%	322	95.57%	422	96.20%
Total Non Violations	251	96.54%	291	96.25%	3,868	95.65%	322	95.65%	422	96.20%
Non - Issued	<i>Quantity</i>	<i>% of Viol</i>	<i>Quantity</i>	<i>% of Viol</i>	<i>Quantity</i>	<i>% of Viol</i>	<i>Quantity</i>	<i>% of Viol</i>	<i>Quantity</i>	<i>% of Viol</i>
No Plate	1	11.11%	3	26.47%	27	15.34%	2	15.34%	3	17.00%
Out of State Plate	0	0.00%	1	5.88%	3	1.70%	0	1.70%	0	1.00%
Glare on Plate	0	0.00%	0	2.94%	1	0.57%	0	0.57%	0	1.00%
Illegible Plate	0	0.00%	0	0.00%	1	0.57%	0	0.57%	0	0.50%
Plate Obstructed	0	0.00%	0	0.00%	0	0.00%	0	0.00%	0	0.50%
Windshield Glare	1	11.11%	1	5.88%	15	8.52%	1	8.52%	1	4.00%
Driver Obstructed	0	0.00%	1	8.82%	23	13.07%	2	13.07%	0	0.00%
Car Obstructed	0	0.00%	0	2.94%	1	0.57%	0	0.57%	0	1.50%
Emergency Vehicle	0	0.00%	0	0.00%	0	0.00%	0	0.00%	0	0.00%
No DMV Match Found	2	22.22%	0	2.94%	8	4.55%	1	4.55%	2	9.00%
LASD Expired	0	0.00%	0	0.00%	0	0.00%	0	0.00%	0	0.00%
Other	0	0.00%	0	0.00%	0	0.00%	0	0.00%	0	0.50%
Total	4	44.44%	6	55.88%	80	44.89%	7	44.89%	6	35.00%
Framing of Plate	0	0.00%	0	2.94%	1	0.57%	0	0.57%	0	0.00%
Focus / Clarity of Plate	0	0.00%	0	0.00%	5	2.84%	0	2.84%	0	2.50%
Dark Interior	0	0.00%	0	0.00%	0	0.00%	0	0.00%	0	0.00%
Framing of Driver	0	0.00%	0	2.94%	1	0.57%	0	0.57%	0	0.00%
Focus / Clarity of Driver	0	0.00%	0	2.94%	2	1.14%	0	1.14%	0	0.50%
Framing of Car	1	11.11%	0	0.00%	2	1.14%	0	1.14%	0	1.00%
Data Error	0	0.00%	0	0.00%	0	0.00%	0	0.00%	0	0.00%
Exposure	0	0.00%	0	0.00%	1	0.57%	0	0.57%	1	3.00%
Equipment Malfunction	0	0.00%	0	0.00%	0	0.00%	0	0.00%	0	1.00%
LASD Return	0	0.00%	0	2.94%	10	5.68%	1	5.68%	1	4.50%
ACS Expired	0	0.00%	0	0.00%	1	0.57%	0	0.57%	0	1.50%
Total	1	11.11%	1	11.76%	23	13.07%	2	13.07%	2	14.00%



expertise in action™

Los Angeles County MTA Orange Line Approach Summary Report Location 1391: NB Reseda Blvd @ Busway

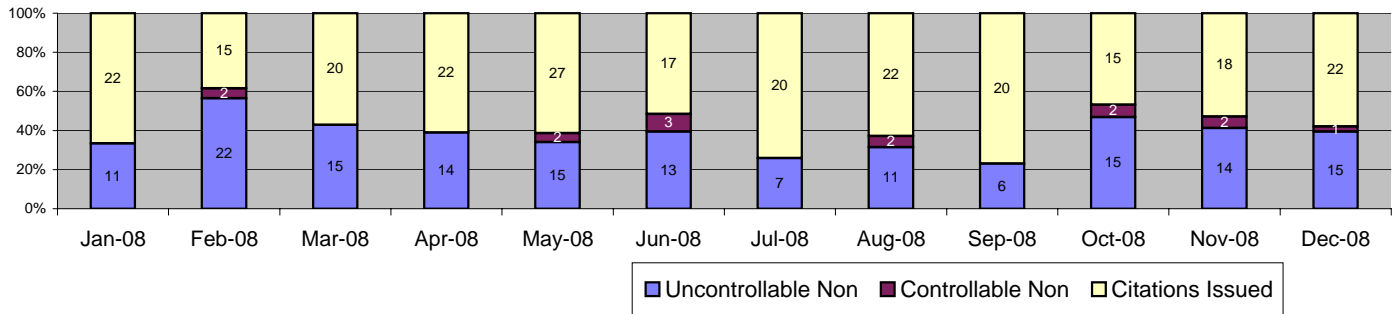


Events	Dec-08		3 Month Average		Year to Date Total		Year to Date Average		2007 Average	
	Quantity	% of Events	Quantity	% of Events	Quantity	% of Events	Quantity	% of Events	Quantity	% of Events
Non Violations	22	14.01%	30	17.48%	317	17.35%	26	17.35%	31	21.29%
Violations	135	85.99%	171	83.38%	1,510	82.65%	126	82.65%	114	78.71%
Total Events	157	100.00%	201	100.00%	1,827	100.00%	152	100.00%	145	100.00%
<i>Violations</i>	<i>Quantity</i>	<i>% of Viol</i>	<i>Quantity</i>	<i>% of Viol</i>	<i>Quantity</i>	<i>% of Viol</i>	<i>Quantity</i>	<i>% of Viol</i>	<i>Quantity</i>	<i>% of Viol</i>
Uncont. Non-Issued Viol	34	25.19%	49	28.85%	468	30.99%	39	30.99%	33	28.95%
Cont. Non-Issued Viol	13	9.63%	33	19.30%	331	21.92%	28	21.92%	27	23.32%
Citations	88	65.19%	89	42.94%	711	47.09%	59	47.09%	54	47.73%
Av. Violation Speed	20.83		20.98		20.76		20.76		20.48	
Av. Issued Speed	20.82		20.99		20.83		20.83		20.64	
Av. Violation Sec.	1.75		2.14		2.54		2.54		3.04	
Av. Issued Sec.	1.87		1.85		2.50		2.50		3.00	
Cal. Days/Enforc. Days	31	31	30	30	366	366	31	31	30	30
Daily Citation Yield	2.84	2.84	2.92	2.92	1.94	1.94	1.94	1.94	1.81	1.81
Cit /Viol. Iss. Rate	65%		52%		47%		47%		48%	
Prosecut. Iss. Rate	87%		73%		68%		68%		67%	
<i>Non - Violations</i>	<i>Quantity</i>	<i>% of Events</i>	<i>Quantity</i>	<i>% of Events</i>	<i>Quantity</i>	<i>% of Events</i>	<i>Quantity</i>	<i>% of Events</i>	<i>Quantity</i>	<i>% of Events</i>
Rear Axle Violation	0	0.00%	0	0.00%	1	0.05%	0	0.05%	0	0.17%
Right Turn	0	0.00%	0	0.00%	0	0.00%	0	0.00%	0	0.00%
No Violation Occurred	22	14.01%	30	14.78%	316	17.30%	26	17.30%	31	21.12%
Total Non Violations	22	14.01%	30	14.78%	317	17.35%	26	17.35%	31	21.29%
Non - Issued	<i>Quantity</i>	<i>% of Viol</i>	<i>Quantity</i>	<i>% of Viol</i>	<i>Quantity</i>	<i>% of Viol</i>	<i>Quantity</i>	<i>% of Viol</i>	<i>Quantity</i>	<i>% of Viol</i>
No Plate	19	14.07%	21	12.48%	183	12.12%	15	12.12%	16	14.04%
Out of State Plate	1	0.74%	3	1.56%	16	1.06%	1	1.06%	2	1.61%
Glare on Plate	1	0.74%	0	0.00%	3	0.20%	0	0.20%	0	0.37%
Illegible Plate	0	0.00%	0	0.19%	1	0.07%	0	0.07%	0	0.37%
Plate Obstructed	0	0.00%	1	0.39%	5	0.33%	0	0.33%	1	1.17%
Windshield Glare	4	2.96%	10	6.04%	106	7.02%	9	7.02%	2	1.39%
Driver Obstructed	0	0.00%	1	0.58%	28	1.85%	2	1.85%	0	0.15%
Car Obstructed	0	0.00%	3	1.75%	16	1.06%	1	1.06%	2	1.68%
Emergency Vehicle	3	2.22%	2	0.97%	32	2.12%	3	2.12%	2	1.46%
No DMV Match Found	6	4.44%	8	4.87%	75	4.97%	6	4.97%	7	6.29%
LASD Expired	0	0.00%	0	0.00%	3	0.20%	0	0.20%	0	0.37%
Other	0	0.00%	0	0.00%	0	0.00%	0	0.00%	0	0.07%
Total	34	25.19%	49	28.85%	80	30.99%	39	30.99%	33	28.95%
Framing of Plate	3	2.22%	9	5.46%	140	9.27%	12	9.27%	12	10.16%
Focus / Clarity of Plate	0	0.00%	1	0.58%	11	0.73%	1	0.73%	4	3.65%
Dark Interior	0	0.00%	0	0.00%	0	0.00%	0	0.00%	0	0.00%
Framing of Driver	1	0.74%	4	2.34%	63	4.17%	5	4.17%	1	0.80%
Focus / Clarity of Driver	0	0.00%	1	0.39%	9	0.60%	1	0.60%	1	0.44%
Framing of Car	1	0.74%	13	7.80%	51	3.38%	4	3.38%	2	1.54%
Data Error	0	0.00%	0	0.19%	2	0.13%	0	0.13%	2	1.90%
Exposure	0	0.00%	0	0.00%	0	0.00%	0	0.00%	0	0.15%
Equipment Malfunction	0	0.00%	0	0.00%	3	0.20%	0	0.20%	1	0.73%
LASD Return	8	5.93%	4	2.53%	52	3.44%	4	3.44%	3	2.63%
ACS Expired	0	0.00%	0	0.00%	0	0.00%	0	0.00%	2	1.32%
Total	13	9.63%	33	19.30%	331	21.92%	28	21.92%	27	23.32%



expertise in action™

Los Angeles County MTA Orange Line Approach Summary Report Location 1392: SB Reseda Blvd @ Busway

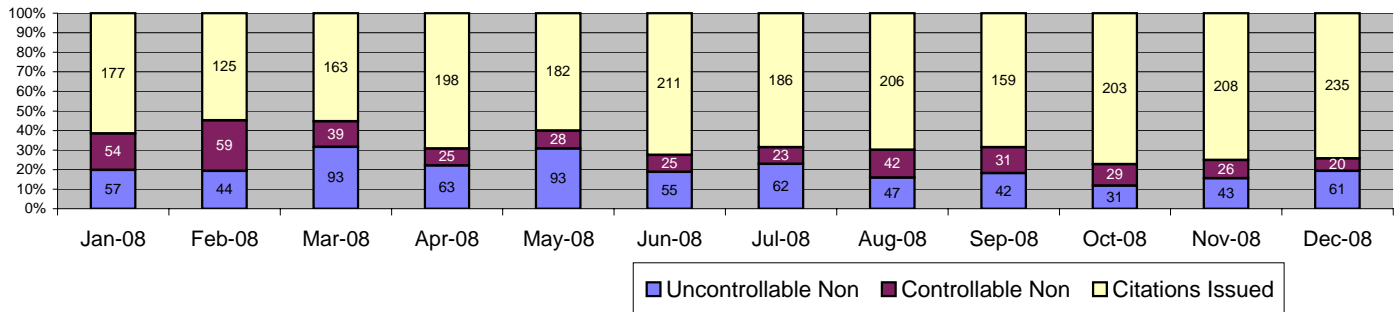


Events	Dec-08		3 Month Average		Year to Date Total		Year to Date Average		2007 Average	
	Quantity	% of Events	Quantity	% of Events	Quantity	% of Events	Quantity	% of Events	Quantity	% of Events
Non Violations	10	20.83%	17	21.41%	168	28.97%	14	28.97%	17	26.10%
Violations	38	79.17%	31	73.49%	412	71.03%	34	71.03%	49	73.90%
Total Events	48	100.00%	48	100.00%	580	100.00%	48	100.00%	66	100.00%
<i>Violations</i>	<i>Quantity</i>	<i>% of Viol</i>	<i>Quantity</i>	<i>% of Viol</i>	<i>Quantity</i>	<i>% of Viol</i>	<i>Quantity</i>	<i>% of Viol</i>	<i>Quantity</i>	<i>% of Viol</i>
Uncont. Non-Issued Viol	15	39.47%	12	38.04%	158	38.35%	13	38.35%	18	36.18%
Cont. Non-Issued Viol	1	2.63%	1	4.35%	14	3.40%	1	3.40%	3	5.29%
Citations	22	57.89%	18	59.87%	240	58.25%	20	58.25%	29	58.53%
Av. Violation Speed	19.56		19.02		19.04		19.04		18.94	
Av. Issued Speed	20.18		18.44		18.80		18.80		18.82	
Av. Violation Sec.	13.68		14.73		14.56		14.56		15.22	
Av. Issued Sec.	13.91		15.25		14.97		14.97		15.08	
Cal. Days/Enforc. Days	31	31	30	30	366	366	31	31	30	30
Daily Citation Yield	0.71	0.71	0.58	0.58	0.66	0.66	0.66	0.66	0.94	0.94
Cit /Viol. Iss. Rate	58%		58%		58%		58%		59%	
Prosecut. Iss. Rate	96%		93%		94%		94%		92%	
<i>Non - Violations</i>	<i>Quantity</i>	<i>% of Events</i>	<i>Quantity</i>	<i>% of Events</i>	<i>Quantity</i>	<i>% of Events</i>	<i>Quantity</i>	<i>% of Events</i>	<i>Quantity</i>	<i>% of Events</i>
Rear Axle Violation	0	0.00%	0	0.00%	1	0.17%	0	0.17%	0	0.00%
Right Turn	0	0.00%	0	0.00%	0	0.00%	0	0.00%	0	0.00%
No Violation Occurred	10	20.83%	17	36.11%	167	28.79%	14	28.79%	17	26.10%
Total Non Violations	10	20.83%	17	36.11%	168	28.97%	14	28.97%	17	26.10%
<i>Non - Issued</i>	<i>Quantity</i>	<i>% of Viol</i>	<i>Quantity</i>	<i>% of Viol</i>	<i>Quantity</i>	<i>% of Viol</i>	<i>Quantity</i>	<i>% of Viol</i>	<i>Quantity</i>	<i>% of Viol</i>
No Plate	8	21.05%	5	15.22%	63	15.29%	5	15.29%	9	17.58%
Out of State Plate	1	2.63%	0	1.09%	7	1.70%	1	1.70%	0	0.68%
Glare on Plate	0	0.00%	0	1.09%	1	0.24%	0	0.24%	0	0.17%
Illegible Plate	0	0.00%	0	0.00%	1	0.24%	0	0.24%	0	0.34%
Plate Obstructed	1	2.63%	0	0.00%	2	0.49%	0	0.49%	0	0.17%
Windshield Glare	0	0.00%	0	1.09%	8	1.94%	1	1.94%	0	0.17%
Driver Obstructed	1	2.63%	0	1.09%	16	3.88%	1	3.88%	0	0.17%
Car Obstructed	2	5.26%	2	7.61%	26	6.31%	2	6.31%	2	3.75%
Emergency Vehicle	1	2.63%	2	7.61%	16	3.88%	1	3.88%	1	2.73%
No DMV Match Found	1	2.63%	1	3.26%	14	3.40%	1	3.40%	5	10.07%
LASD Expired	0	0.00%	0	0.00%	4	0.97%	0	0.97%	0	0.34%
Other	0	0.00%	0	0.00%	0	0.00%	0	0.00%	0	0.00%
Total	15	39.47%	12	38.04%	80	38.35%	13	38.35%	18	36.18%
Framing of Plate	0	0.00%	0	0.00%	1	0.24%	0	0.24%	0	0.17%
Focus / Clarity of Plate	0	0.00%	0	0.00%	0	0.00%	0	0.00%	0	0.17%
Dark Interior	0	0.00%	0	0.00%	0	0.00%	0	0.00%	0	0.00%
Framing of Driver	0	0.00%	0	0.00%	0	0.00%	0	0.00%	0	0.00%
Focus / Clarity of Driver	0	0.00%	0	0.00%	0	0.00%	0	0.00%	0	0.00%
Framing of Car	0	0.00%	0	0.00%	0	0.00%	0	0.00%	0	0.34%
Data Error	0	0.00%	0	0.00%	1	0.24%	0	0.24%	1	1.37%
Exposure	0	0.00%	0	0.00%	0	0.00%	0	0.00%	0	0.17%
Equipment Malfunction	0	0.00%	0	0.00%	0	0.00%	0	0.00%	0	0.68%
LASD Return	1	2.63%	1	4.35%	12	2.91%	1	2.91%	1	1.02%
ACS Expired	0	0.00%	0	0.00%	0	0.00%	0	0.00%	1	1.37%
Total	1	2.63%	1	4.35%	14	3.40%	1	3.40%	3	5.29%



expertise in action™

Los Angeles County MTA Orange Line Approach Summary Report Location 1402: SB Mason Ave. @ Busway



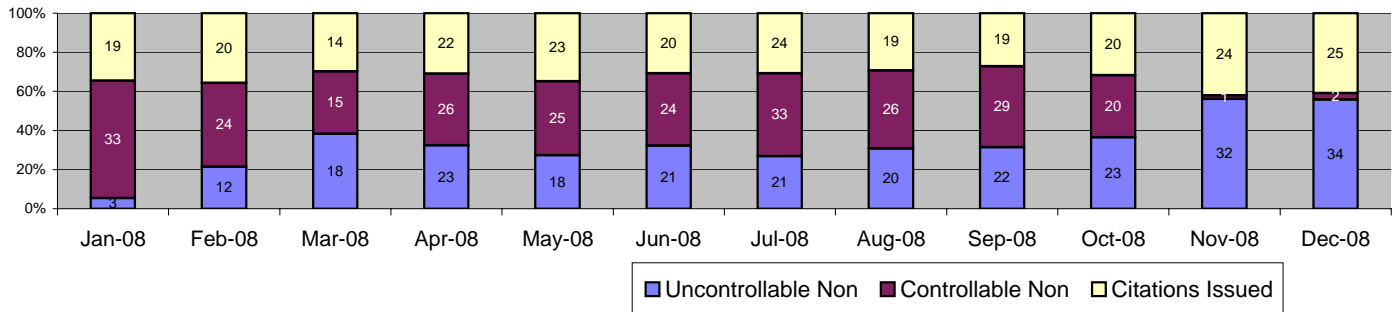
Events	Dec-08		3 Month Average		Year to Date Total		Year to Date Average		2007 Average	
	Quantity	% of Events	Quantity	% of Events	Quantity	% of Events	Quantity	% of Events	Quantity	% of Events
Non Violations	176	35.77%	167	38.62%	2,068	38.20%	172	38.20%	237	40.35%
Violations	316	64.23%	257	61.59%	3,345	61.80%	279	61.80%	350	59.65%
Total Events	492	100.00%	424	100.00%	5,413	100.00%	451	100.00%	588	100.00%
<i>Violations</i>	<i>Quantity</i>	<i>% of Viol</i>	<i>Quantity</i>	<i>% of Viol</i>	<i>Quantity</i>	<i>% of Viol</i>	<i>Quantity</i>	<i>% of Viol</i>	<i>Quantity</i>	<i>% of Viol</i>
Uncont. Non-Issued Viol	61	19.30%	39	15.03%	691	20.66%	58	20.66%	65	18.50%
Cont. Non-Issued Viol	20	6.33%	29	11.14%	401	11.99%	33	11.99%	42	12.10%
Citations	235	74.37%	190	61.52%	2,253	67.35%	188	67.35%	243	69.39%
Av. Violation Speed	21.17		21.29		21.24		21.24		21.27	
Av. Issued Speed	20.86		21.39		21.14		21.14		21.26	
Av. Violation Sec.	26.09		23.83		25.27		25.27		24.79	
Av. Issued Sec.	26.35		22.77		25.05		25.05		24.85	
Cal. Days/Enforc. Days	31	31	30	30	366	366	31	31	30	30
Daily Citation Yield	7.58	7.58	6.26	6.26	6.16	6.16	6.16	6.16	7.99	7.99
Cit /Viol. Iss. Rate	74%		74%		67%		67%		69%	
Prosecut. Iss. Rate	92%		87%		85%		85%		85%	
<i>Non - Violations</i>	<i>Quantity</i>	<i>% of Events</i>	<i>Quantity</i>	<i>% of Events</i>	<i>Quantity</i>	<i>% of Events</i>	<i>Quantity</i>	<i>% of Events</i>	<i>Quantity</i>	<i>% of Events</i>
Rear Axle Violation	0	0.00%	0	0.08%	1	0.02%	0	0.02%	0	0.00%
Right Turn	0	0.00%	0	0.00%	0	0.00%	0	0.00%	0	0.00%
No Violation Occurred	176	35.77%	167	39.28%	2,067	38.19%	172	38.19%	237	40.35%
Total Non Violations	176	35.77%	167	39.36%	2,068	38.20%	172	38.20%	237	40.35%
Non - Issued	<i>Quantity</i>	<i>% of Viol</i>	<i>Quantity</i>	<i>% of Viol</i>	<i>Quantity</i>	<i>% of Viol</i>	<i>Quantity</i>	<i>% of Viol</i>	<i>Quantity</i>	<i>% of Viol</i>
No Plate	23	7.28%	13	5.18%	171	5.11%	14	5.11%	25	7.23%
Out of State Plate	7	2.22%	6	2.20%	67	2.00%	6	2.00%	6	1.64%
Glare on Plate	0	0.00%	0	0.13%	17	0.51%	1	0.51%	2	0.48%
Illegible Plate	0	0.00%	1	0.26%	7	0.21%	1	0.21%	1	0.26%
Plate Obstructed	0	0.00%	0	0.13%	3	0.09%	0	0.09%	1	0.21%
Windshield Glare	5	1.58%	4	1.42%	117	3.50%	10	3.50%	1	0.21%
Driver Obstructed	0	0.00%	1	0.26%	84	2.51%	7	2.51%	0	0.10%
Car Obstructed	0	0.00%	0	0.00%	1	0.03%	0	0.03%	1	0.21%
Emergency Vehicle	7	2.22%	3	1.17%	46	1.38%	4	1.38%	2	0.52%
No DMV Match Found	19	6.01%	11	4.27%	173	5.17%	14	5.17%	24	6.83%
LASD Expired	0	0.00%	0	0.00%	5	0.15%	0	0.15%	3	0.76%
Other	0	0.00%	0	0.00%	0	0.00%	0	0.00%	0	0.05%
Total	61	19.30%	39	15.03%	80	20.66%	58	20.66%	65	18.50%
Framing of Plate	0	0.00%	0	0.00%	4	0.12%	0	0.12%	0	0.12%
Focus / Clarity of Plate	0	0.00%	0	0.13%	12	0.36%	1	0.36%	12	3.54%
Dark Interior	4	1.27%	9	3.63%	104	3.11%	9	3.11%	2	0.55%
Framing of Driver	1	0.32%	2	0.65%	26	0.78%	2	0.78%	2	0.57%
Focus / Clarity of Driver	3	0.95%	0	0.13%	5	0.15%	0	0.15%	1	0.14%
Framing of Car	0	0.00%	0	0.13%	2	0.06%	0	0.06%	0	0.00%
Data Error	1	0.32%	0	0.00%	2	0.06%	0	0.06%	2	0.48%
Exposure	0	0.00%	0	0.00%	2	0.06%	0	0.06%	1	0.24%
Equipment Malfunction	0	0.00%	3	1.04%	24	0.72%	2	0.72%	2	0.64%
LASD Return	11	3.48%	14	5.31%	219	6.55%	18	6.55%	7	1.97%
ACS Expired	0	0.00%	0	0.13%	1	0.03%	0	0.03%	14	3.85%
Total	20	6.33%	29	11.14%	401	11.99%	33	11.99%	42	12.10%



expertise in action™

Los Angeles County MTA Orange Line Approach Summary Report

Location 1405: WB to NB Mason Ave. @ Victory Blvd.



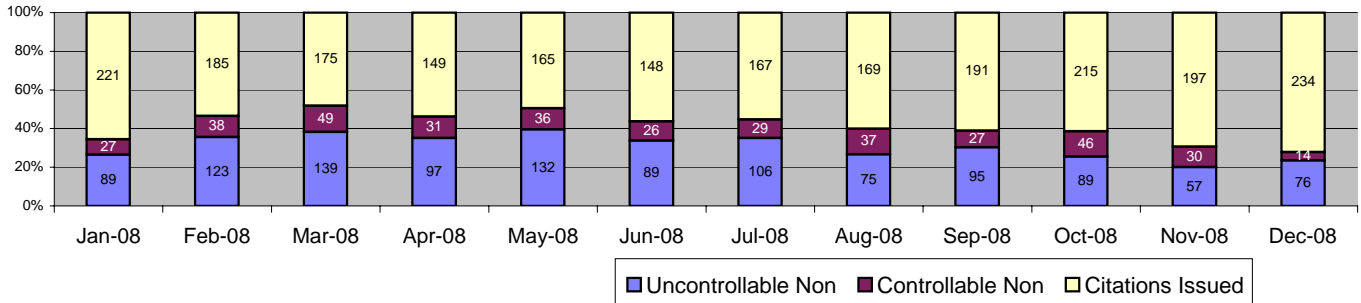
■ Uncontrollable Non ■ Controllable Non ■ Citations Issued

Events	Dec-08		3 Month Average		Year to Date Total		Year to Date Average		2007 Average	
	Quantity	% of Events	Quantity	% of Events	Quantity	% of Events	Quantity	% of Events	Quantity	% of Events
Non Violations	266	81.35%	243	83.56%	3,163	80.75%	264	80.75%	517	87.24%
Violations	61	18.65%	63	16.27%	754	19.25%	63	19.25%	76	12.76%
Total Events	327	100.00%	306	100.00%	3,917	100.00%	326	100.00%	593	100.00%
<i>Violations</i>	<i>Quantity</i>	<i>% of Viol</i>	<i>Quantity</i>	<i>% of Viol</i>	<i>Quantity</i>	<i>% of Viol</i>	<i>Quantity</i>	<i>% of Viol</i>	<i>Quantity</i>	<i>% of Viol</i>
Uncont. Non-Issued Viol	34	55.74%	26	40.53%	247	32.76%	21	32.76%	20	26.21%
Cont. Non-Issued Viol	2	3.28%	17	26.32%	258	34.22%	22	34.22%	26	34.36%
Citations	25	40.98%	21	31.87%	249	33.02%	21	33.02%	30	39.43%
Av. Violation Speed	12.50		12.53		12.28		12.28		12.39	
Av. Issued Speed	18.24		17.88		18.22		18.22		17.78	
Av. Violation Sec.	12.57		7.86		8.26		8.26		7.53	
Av. Issued Sec.	14.04		6.47		7.56		7.56		6.32	
Cal. Days/Enforc. Days	31	31	30	30	366	366	31	31	30	30
Daily Citation Yield	0.81	0.81	0.69	0.69	0.68	0.68	0.68	0.68	0.98	0.98
Cit /Viol. Iss. Rate	41%		33%		33%		33%		39%	
Prosecut. Iss. Rate	93%		56%		49%		49%		53%	
<i>Non - Violations</i>	<i>Quantity</i>	<i>% of Events</i>	<i>Quantity</i>	<i>% of Events</i>	<i>Quantity</i>	<i>% of Events</i>	<i>Quantity</i>	<i>% of Events</i>	<i>Quantity</i>	<i>% of Events</i>
Rear Axle Violation	0	0.00%	0	0.00%	1	0.03%	0	0.03%	0	0.00%
Right Turn	0	0.00%	0	0.00%	2	0.05%	0	0.05%	0	0.01%
No Violation Occurred	266	81.35%	243	79.30%	3,160	80.67%	263	80.67%	517	87.22%
Total Non Violations	266	81.35%	243	79.30%	3,163	80.75%	264	80.75%	517	87.24%
Non - Issued	<i>Quantity</i>	<i>% of Viol</i>	<i>Quantity</i>	<i>% of Viol</i>	<i>Quantity</i>	<i>% of Viol</i>	<i>Quantity</i>	<i>% of Viol</i>	<i>Quantity</i>	<i>% of Viol</i>
No Plate	6	9.84%	7	11.58%	66	8.75%	6	8.75%	11	14.21%
Out of State Plate	0	0.00%	1	1.05%	7	0.93%	1	0.93%	1	0.77%
Glare on Plate	1	1.64%	0	0.53%	2	0.27%	0	0.27%	1	0.99%
Illegible Plate	0	0.00%	0	0.53%	3	0.40%	0	0.40%	0	0.55%
Plate Obstructed	0	0.00%	1	1.58%	7	0.93%	1	0.93%	1	1.10%
Windshield Glare	1	1.64%	5	7.89%	63	8.36%	5	8.36%	0	0.55%
Driver Obstructed	1	1.64%	0	0.53%	23	3.05%	2	3.05%	0	0.33%
Car Obstructed	0	0.00%	0	0.53%	1	0.13%	0	0.13%	0	0.11%
Emergency Vehicle	0	0.00%	0	0.53%	1	0.13%	0	0.13%	0	0.11%
No DMV Match Found	5	8.20%	3	5.26%	33	4.38%	3	4.38%	5	6.72%
LASD Expired	0	0.00%	0	0.00%	1	0.13%	0	0.13%	1	0.77%
Other	20	32.79%	7	10.53%	40	5.31%	3	5.31%	0	0.00%
Total	34	55.74%	26	40.53%	80	32.76%	21	32.76%	20	26.21%
Framing of Plate	0	0.00%	0	0.53%	2	0.27%	0	0.27%	0	0.00%
Focus / Clarity of Plate	0	0.00%	0	0.53%	11	1.46%	1	1.46%	1	1.32%
Dark Interior	0	0.00%	0	0.53%	3	0.40%	0	0.40%	0	0.22%
Framing of Driver	0	0.00%	0	0.00%	2	0.27%	0	0.27%	0	0.00%
Focus / Clarity of Driver	0	0.00%	0	0.00%	4	0.53%	0	0.53%	0	0.44%
Framing of Car	0	0.00%	1	1.58%	9	1.19%	1	1.19%	0	0.00%
Data Error	0	0.00%	11	17.89%	198	26.26%	17	26.26%	19	25.44%
Exposure	0	0.00%	0	0.00%	1	0.13%	0	0.13%	1	0.99%
Equipment Malfunction	0	0.00%	0	0.00%	0	0.00%	0	0.00%	2	2.09%
LASD Return	2	3.28%	3	5.26%	28	3.71%	2	3.71%	2	2.97%
ACS Expired	0	0.00%	0	0.00%	0	0.00%	0	0.00%	1	0.88%
Total	2	3.28%	17	26.32%	258	34.22%	22	34.22%	26	34.36%



expertise in action™

Los Angeles County MTA Orange Line Approach Summary Report Location 1412: SB De Soto Ave @ Busway



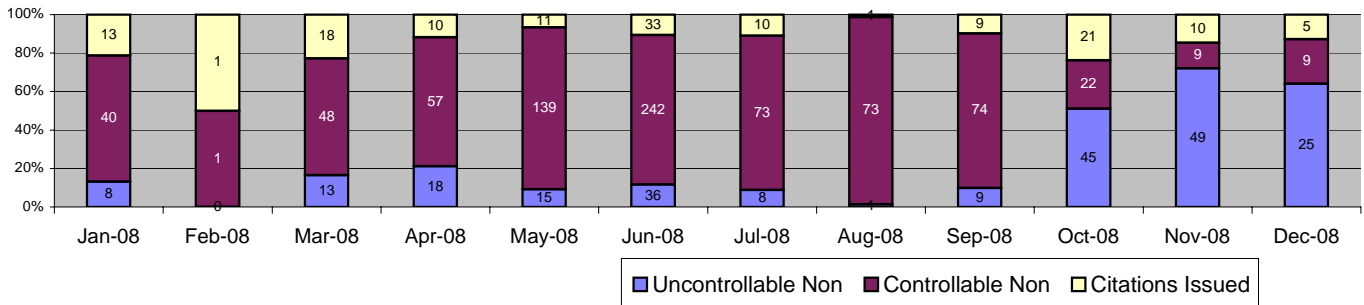
Events	Dec-08		3 Month Average		Year to Date Total		Year to Date Average		2007 Average	
	Quantity	% of Events	Quantity	% of Events	Quantity	% of Events	Quantity	% of Events	Quantity	% of Events
Non Violations	34	9.50%	33	10.33%	457	10.80%	38	10.80%	61	13.03%
Violations	324	90.50%	316	88.08%	3,773	89.20%	314	89.20%	404	86.97%
Total Events	358	100.00%	349	100.00%	4,230	100.00%	353	100.00%	465	100.00%
<i>Violations</i>	<i>Quantity</i>	<i>% of Viol</i>	<i>Quantity</i>	<i>% of Viol</i>	<i>Quantity</i>	<i>% of Viol</i>	<i>Quantity</i>	<i>% of Viol</i>	<i>Quantity</i>	<i>% of Viol</i>
Uncont. Non-Issued Viol	76	23.46%	80	25.45%	1,167	30.93%	97	30.93%	101	24.96%
Cont. Non-Issued Viol	14	4.32%	34	10.88%	390	10.34%	33	10.34%	42	10.49%
Citations	234	72.22%	201	50.52%	2,216	58.73%	185	58.73%	261	64.55%
Av. Violation Speed	24.89		24.20		24.47		24.47		24.02	
Av. Issued Speed	24.39		23.42		23.45		23.45		23.72	
Av. Violation Sec.	8.18		10.11		9.12		9.12		8.92	
Av. Issued Sec.	8.03		9.59		8.83		8.83		8.42	
Cal. Days/Enforc. Days	31	31	30	30	366	366	31	31	30	30
Daily Citation Yield	7.55	7.55	6.63	6.63	6.05	6.05	6.05	6.05	8.58	8.58
Cit/Viol. Iss. Rate	72%		64%		59%		59%		65%	
Prosecut. Iss. Rate	94%		85%		85%		85%		86%	
Non - Violations	Dec-08		3 Month Average		Year to Date Total		Year to Date Average		2007 Average	
	<i>Quantity</i>	<i>% of Events</i>	<i>Quantity</i>	<i>% of Events</i>	<i>Quantity</i>	<i>% of Events</i>	<i>Quantity</i>	<i>% of Events</i>	<i>Quantity</i>	<i>% of Events</i>
Rear Axle Violation	1	0.28%	1	0.19%	8	0.19%	1	0.19%	1	0.14%
Right Turn	0	0.00%	0	0.00%	1	0.02%	0	0.02%	0	0.00%
No Violation Occurred	33	9.22%	33	9.36%	448	10.59%	37	10.59%	60	12.89%
Total Non Violations	34	9.50%	33	9.55%	457	10.80%	38	10.80%	61	13.03%
Non - Issued	<i>Quantity</i>	<i>% of Viol</i>	<i>Quantity</i>	<i>% of Viol</i>	<i>Quantity</i>	<i>% of Viol</i>	<i>Quantity</i>	<i>% of Viol</i>	<i>Quantity</i>	<i>% of Viol</i>
No Plate	21	6.48%	18	5.70%	223	5.91%	19	5.91%	27	6.76%
Out of State Plate	7	2.16%	8	2.64%	93	2.46%	8	2.46%	8	1.98%
Glare on Plate	0	0.00%	1	0.42%	17	0.45%	1	0.45%	2	0.49%
Illegible Plate	0	0.00%	1	0.21%	14	0.37%	1	0.37%	1	0.31%
Plate Obstructed	0	0.00%	2	0.63%	14	0.37%	1	0.37%	3	0.66%
Windshield Glare	1	0.31%	5	1.48%	66	1.75%	6	1.75%	1	0.16%
Driver Obstructed	7	2.16%	7	2.11%	258	6.84%	22	6.84%	1	0.35%
Car Obstructed	1	0.31%	1	0.32%	8	0.21%	1	0.21%	1	0.31%
Emergency Vehicle	18	5.56%	19	5.91%	202	5.35%	17	5.35%	17	4.08%
No DMV Match Found	21	6.48%	19	5.91%	260	6.89%	22	6.89%	35	8.66%
LASD Expired	0	0.00%	0	0.00%	10	0.27%	1	0.27%	4	1.05%
Other	0	0.00%	0	0.11%	2	0.05%	0	0.05%	1	0.14%
Total	76	23.46%	80	25.45%	80	30.93%	97	30.93%	101	24.96%
Framing of Plate	0	0.00%	0	0.00%	10	0.27%	1	0.27%	1	0.16%
Focus / Clarity of Plate	0	0.00%	1	0.42%	17	0.45%	1	0.45%	5	1.28%
Dark Interior	0	0.00%	0	0.00%	1	0.03%	0	0.03%	0	0.04%
Framing of Driver	0	0.00%	2	0.53%	87	2.31%	7	2.31%	0	0.00%
Focus / Clarity of Driver	2	0.62%	3	0.95%	30	0.80%	3	0.80%	2	0.43%
Framing of Car	0	0.00%	0	0.00%	0	0.00%	0	0.00%	0	0.00%
Data Error	0	0.00%	0	0.11%	3	0.08%	0	0.08%	5	1.20%
Exposure	1	0.31%	1	0.21%	4	0.11%	0	0.11%	0	0.06%
Equipment Malfunction	0	0.00%	3	0.95%	38	1.01%	3	1.01%	4	1.09%
LASD Return	11	3.40%	24	7.60%	197	5.22%	16	5.22%	12	2.97%
ACS Expired	0	0.00%	0	0.11%	3	0.08%	0	0.08%	13	3.26%
Total	14	4.32%	34	10.88%	390	10.34%	33	10.34%	42	10.49%



expertise in action™

Los Angeles County MTA Orange Line Approach Summary Report

Location 1415: WB to NB De Soto Ave. @ Busway



Events	Dec-08		3 Month Average		Year to Date Total		Year to Date Average		2007 Average	
	Quantity	% of Events	Quantity	% of Events	Quantity	% of Events	Quantity	% of Events	Quantity	% of Events
Non Violations	116	74.84%	234	59.84%	1,572	57.62%	131	57.62%	281	73.15%
Violations	39	25.16%	83	47.74%	1,156	42.38%	96	42.38%	103	26.85%
Total Events	155	100.00%	317	100.00%	2,728	100.00%	227	100.00%	385	100.00%
<i>Violations</i>	<i>Quantity</i>	<i>% of Viol</i>	<i>Quantity</i>	<i>% of Viol</i>	<i>Quantity</i>	<i>% of Viol</i>	<i>Quantity</i>	<i>% of Viol</i>	<i>Quantity</i>	<i>% of Viol</i>
Uncont. Non-Issued Viol	25	64.10%	34	41.53%	227	19.64%	19	19.64%	19	18.00%
Cont. Non-Issued Viol	9	23.08%	35	42.34%	787	68.08%	66	68.08%	62	59.56%
Citations	5	12.82%	13	13.74%	142	12.28%	12	12.28%	23	22.44%
Av. Violation Speed	9.56		9.53		7.98		7.98		8.27	
Av. Issued Speed	15.80		16.45		16.30		16.30		16.29	
Av. Violation Sec.	11.96		22.30		22.75		22.75		19.38	
Av. Issued Sec.	14.82		17.10		15.78		15.78		17.59	
Cal. Days/Enforc. Days	31	31	30	30	366	366	31	31	30	30
Daily Citation Yield	0.16	0.16	0.44	0.44	0.39	0.39	0.39	0.39	0.76	0.76
Cit/Viol. Iss. Rate	13%		16%		12%		12%		22%	
Prosecut. Iss. Rate	36%		28%		15%		15%		27%	
<i>Non - Violations</i>	<i>Quantity</i>	<i>% of Events</i>	<i>Quantity</i>	<i>% of Events</i>	<i>Quantity</i>	<i>% of Events</i>	<i>Quantity</i>	<i>% of Events</i>	<i>Quantity</i>	<i>% of Events</i>
Rear Axle Violation	0	0.00%	0	0.00%	0	0.00%	0	0.00%	0	0.02%
Right Turn	0	0.00%	5	1.58%	20	0.73%	2	0.73%	0	0.04%
No Violation Occurred	116	74.84%	229	72.34%	1,552	56.89%	129	56.89%	281	73.09%
Total Non Violations	116	74.84%	234	73.92%	1,572	57.62%	131	57.62%	281	73.15%
<i>Non - Issued</i>	<i>Quantity</i>	<i>% of Viol</i>	<i>Quantity</i>	<i>% of Viol</i>	<i>Quantity</i>	<i>% of Viol</i>	<i>Quantity</i>	<i>% of Viol</i>	<i>Quantity</i>	<i>% of Viol</i>
No Plate	2	5.13%	5	5.65%	59	5.10%	5	5.10%	8	8.07%
Out of State Plate	0	0.00%	0	0.40%	3	0.26%	0	0.26%	1	0.56%
Glare on Plate	2	5.13%	2	2.42%	8	0.69%	1	0.69%	0	0.00%
Illegible Plate	0	0.00%	0	0.40%	2	0.17%	0	0.17%	0	0.00%
Plate Obstructed	0	0.00%	0	0.00%	3	0.26%	0	0.26%	0	0.32%
Windshield Glare	3	7.69%	4	4.44%	43	3.72%	4	3.72%	1	1.29%
Driver Obstructed	0	0.00%	0	0.00%	9	0.78%	1	0.78%	0	0.00%
Car Obstructed	0	0.00%	1	0.81%	3	0.26%	0	0.26%	1	1.37%
Emergency Vehicle	0	0.00%	0	0.40%	1	0.09%	0	0.09%	0	0.16%
No DMV Match Found	1	2.56%	3	3.23%	20	1.73%	2	1.73%	5	4.52%
LASD Expired	0	0.00%	0	0.00%	0	0.00%	0	0.00%	2	1.53%
Other	17	43.59%	20	23.79%	76	6.57%	6	6.57%	0	0.16%
Total	25	64.10%	34	41.53%	80	19.64%	19	19.64%	19	18.00%
Framing of Plate	1	2.56%	1	1.61%	6	0.52%	1	0.52%	0	0.16%
Focus / Clarity of Plate	1	2.56%	1	0.81%	3	0.26%	0	0.26%	1	0.65%
Dark Interior	3	7.69%	1	1.21%	9	0.78%	1	0.78%	1	0.73%
Framing of Driver	0	0.00%	0	0.00%	19	1.64%	2	1.64%	0	0.00%
Focus / Clarity of Driver	0	0.00%	0	0.40%	2	0.17%	0	0.17%	1	0.89%
Framing of Car	1	2.56%	11	13.71%	108	9.34%	9	9.34%	3	3.07%
Data Error	0	0.00%	18	21.77%	622	53.81%	52	53.81%	51	49.72%
Exposure	0	0.00%	0	0.40%	1	0.09%	0	0.09%	1	1.21%
Equipment Malfunction	0	0.00%	0	0.40%	1	0.09%	0	0.09%	0	0.16%
LASD Return	3	7.69%	2	2.02%	16	1.38%	1	1.38%	2	2.26%
ACS Expired	0	0.00%	0	0.00%	0	0.00%	0	0.00%	1	0.73%
Total	9	23.08%	35	42.34%	787	68.08%	66	68.08%	62	59.56%



Calls For Information

Reason for Call	Dec-08	3 Month Average	Year to Date Average	Year to Date Total	2007 Average
<i>Appointment</i>	49	40	38	460	57
<i>Bail</i>	97	59	76	909	86
<i>Complaint</i>	0	0	0	5	1
<i>Contest Violation</i>	61	51	53	634	61
<i>Courtesy Notice</i>	0	0	0	1	0
<i>Explain Citation</i>	4	12	14	172	16
<i>Explain Court</i>	1	0	1	10	2
<i>Explain the Project</i>	0	0	0	0	0
<i>Extension</i>	42	33	31	373	44
<i>Other</i>	1	0	0	1	0
<i>Affidavit of Non-Liability</i>	64	69	67	807	95
<i>Affidavit of Non-Liability Status</i>	3	4	6	67	7
<i>Traffic School</i>	50	44	53	640	69
Total Calls	372	313	340	4079	439
Appointments Scheduled	47	30	23	279	22
Affidavits of Non-Liability Processed	359	515	356	4277	387
Court Packets Prepared	185	227	225	2700	243



expertise in action®

Los Angeles County MTA Orange Line Dialy Citation Yield - By Location December 2008

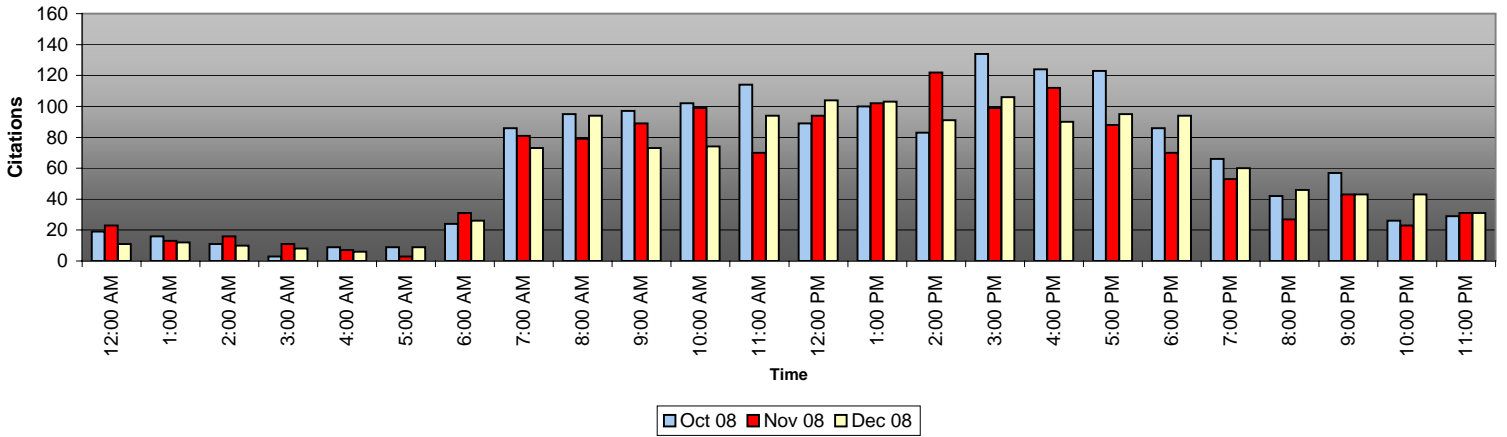
DATE	1301	1302	1313	1314	1321	1322	1331	1332	1341	1342	1351	1352	1361	1362	1371	1372	1382	1385	1391	1392	1402	1405	1412	1415	Total
12/01/2008	2			2		1	4	1	2	2		1	2		2	3	3		2	2	6	2	12		49
12/02/2008	2			1		2			5	2				2	1	1			5	1	6		13	1	43
12/03/2008		1	2	2	1	2		6	3	2	1	3	3			3	1				5	1	10		46
12/04/2008	1					2	1	2	2	2	3	1	1		2	1			2		5	3	11		39
12/05/2008	1		1		1	3	1	3	5	3	2	4	1	1	1	3	3		3		7		3		46
12/06/2008	1	3	2			1		4	3	3	4		6		1	5	2		1		12	1			49
12/07/2008		2	1		1				1	1		1	2			1			3		6				19
12/08/2008	2					1		1	4		1	2	3		1	2	2		3		3		5		30
12/09/2008	2	1		3		4		4	5	5		3	2		2	2			7		3		6		49
12/10/2008	1	1	3	1		1		6	4	2		1	6		1	4	4		1		8		9		53
12/11/2008			2			1		2	1	1		4	3			3	4		8		5		5		39
12/12/2008				1		3		3	3	3	2	2	5	1	1	3	2		3	4	11		6	1	54
12/13/2008				1		3	2	1	2	5			4			4					7		11		40
12/14/2008			1			2	1		1	3	2		2			4		2	1	2	8		3	1	33
12/15/2008	2					2	1	2	1	2			4	2		1	2		1	1	7	1	4		33
12/16/2008	2			2		3	1	4	3	1			2			4	4		3		5	3	9		46
12/17/2008		1	1		1		1	4	2	2	1		2		2	2	3		3		7	2	6		40
12/18/2008			3	2		1		3	4				2			3	1		4	1	7		10		41
12/19/2008	2	2	1	2	1	1	1	1	4	6	4	1	2			4	4		5	1	8	6	5		61
12/20/2008				2		2		1	2	1			1		1	2	1		6	3	10	1	10		43
12/21/2008		1	1	2			1	1	2		1	2	5			4	1				7		14	1	43
12/22/2008	2		2	4	1	3	1	1	2	2	3		5		2	2	1		5	1	9		6		52
12/23/2008			2		1	3	2	1	8	4			1	1		3	2		3		9		9		49
12/24/2008	2			2		2	1	4	6	1		1	4			1	2		3	1	8	1	5		44
12/25/2008								1	2			3	2			1			2		9	1	8		29
12/26/2008		1	1	1		7		2	1	1			2		1	3	2		2	1	10		12		47
12/27/2008			1			3	1	1	7	3	3	1	3		3	3	3		2	1	12		3		50
12/28/2008			2			2			1			1	3	1		5	3				13		7	1	41
12/29/2008	1		5		2	3		4		5	2		3	1		5			5	1	6	3	8		54
12/30/2008	1		1	1	1	6		1	7	5	1		3			2			3		3		14		49
12/31/2008			3			2		3	3	2	1		1			3		2	2		13		10		45
Totals	24	13	35	29	10	66	19	68	95	70	34	28	85	9	21	87	50	4	88	22	235	25	234	5	1356

1301 = NB Tujunga Ave. @ Busway
 1302 = SB Tujunga Ave. @ Busway
 1313 = EB Oxnard St. @ Buffalo Ave.
 1314 = WB Oxnard St. @ Buffalo Ave.
 1321 = NB Woodman Ave. @ Busway
 1322 = SB Woodman Ave. @ Busway
 1331 = NB Kester Ave. @ Busway
 1332 = SB Kester Ave. @ Busway

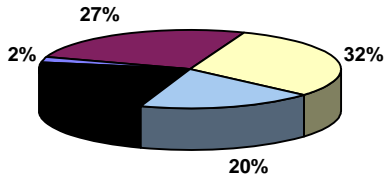
1341 = NB Sepulveda Blvd. @ Busway
 1342 = SB Sepulveda Blvd. @ Busway
 1351 = NB Woodley @ Busway
 1352 = SB Woodley @ Busway
 1361 = NB Balboa Blvd. @ Busway
 1362 = SB Balboa Blvd. @ Busway
 1371 = NB White Oak Ave. @ Busway
 1372 = SB White Oak Ave. @ Busway

1382 = SB Lindley Ave. @ Busway
 1385 = WB to NB Lindley Ave. @ Oxnard St.
 1391 = NB Reseda Blvd. @ Busway
 1392 = SB Reseda Blvd. @ Busway
 1402 = SB Mason Ave. @ Busway
 1405 = WB to NB Mason Ave. @ Victory Blvd.
 1412 = SB De Soto Ave. @ Busway
 1415 = WB to NB De Soto Ave. @ Victory Blvd.

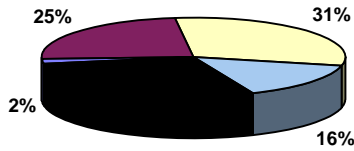
December 2008 View (3 Month Trend)



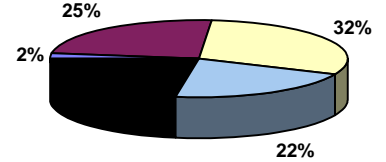
October 2008 Weekday Citations



November 2008 Weekday Citations

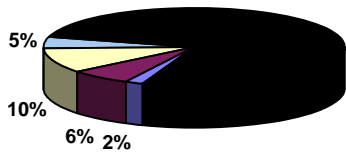


December 2008 Weekday Citations

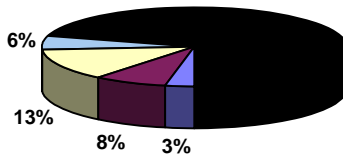


■ 12am to 6am
 ■ 6am to 12pm
 ■ 12pm to 6pm
■ 6pm to 12am
 ■ Weekends

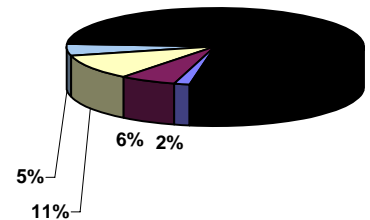
October 2008 Weekend Citations



November 2008 Weekend Citations



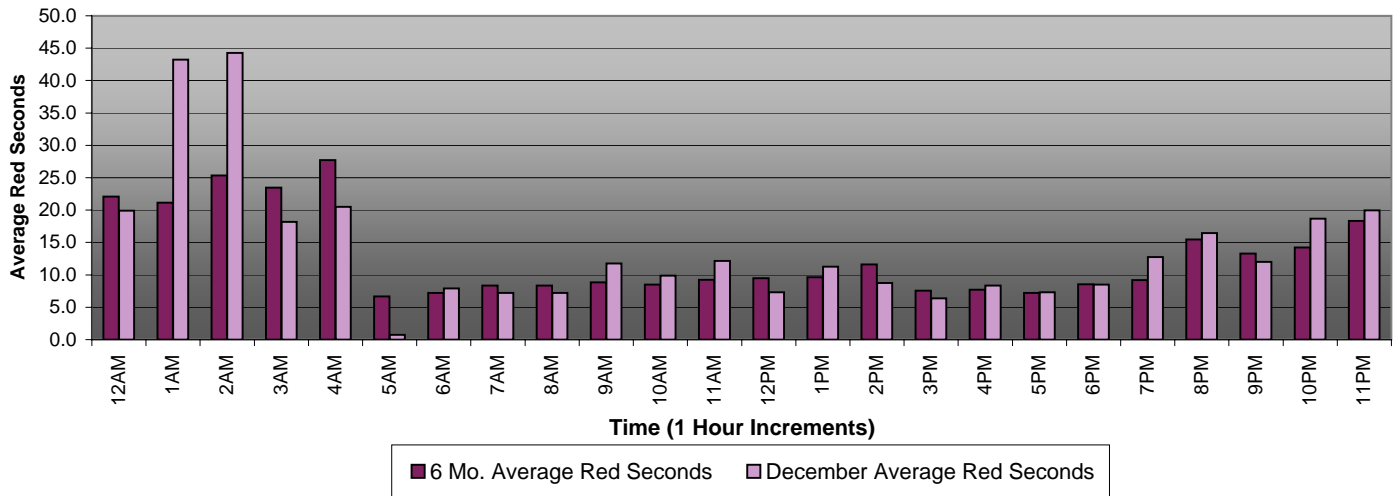
December 2008 Weekend Citations



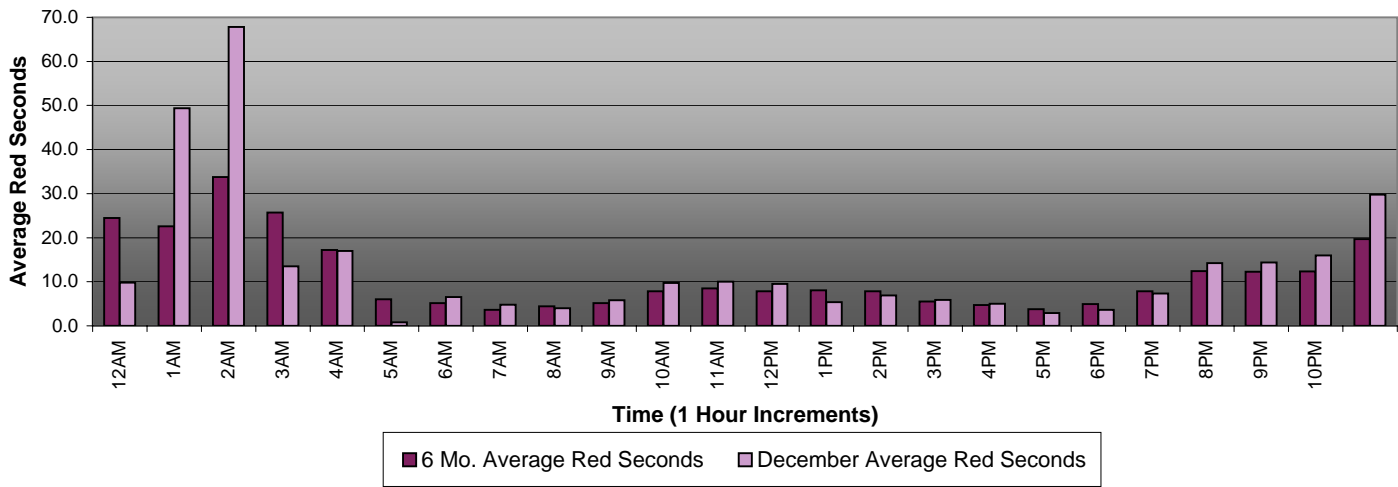
■ 12am to 6am
 ■ 6am to 12pm
 ■ 12pm to 6pm
■ 6pm to 12am
 ■ Weekdays



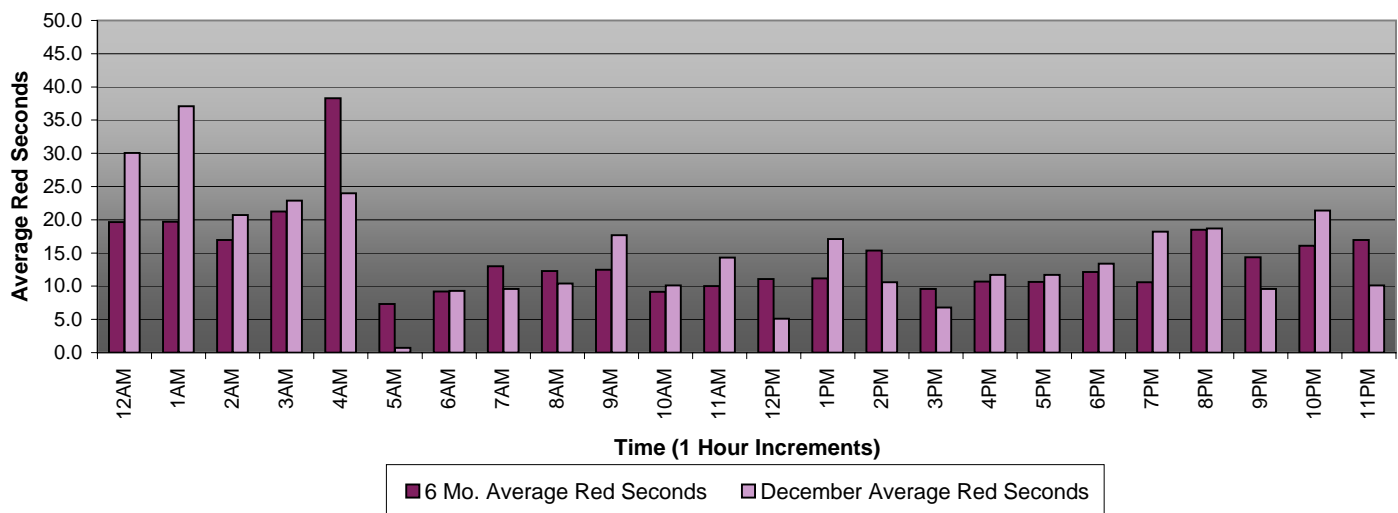
2008 Average Red Seconds (Combined 6 Month Trend, July - December)



2008 Average Red Seconds (Weekdays 6 Mo. Trend, July - December)

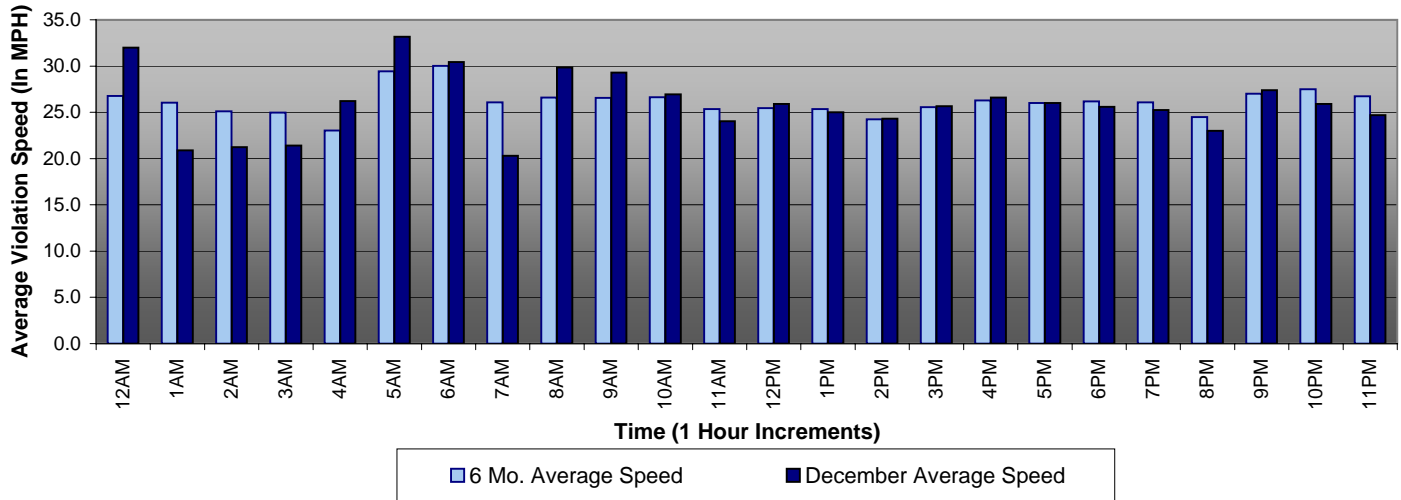


2008 Average Red Seconds (Weekends, 6 Mo. Trend, July - December)

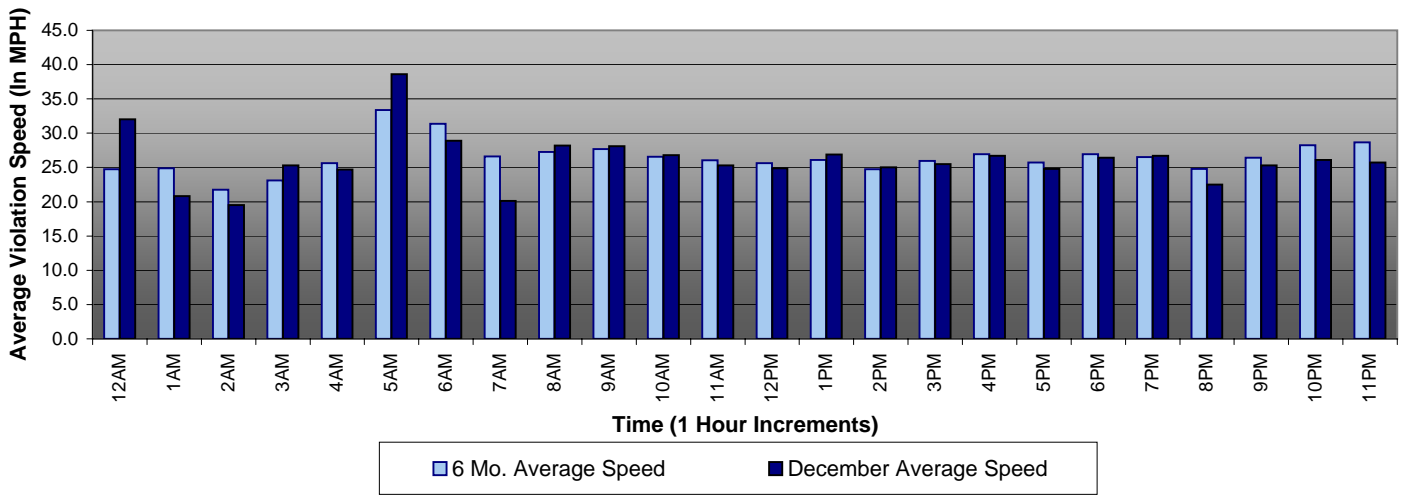




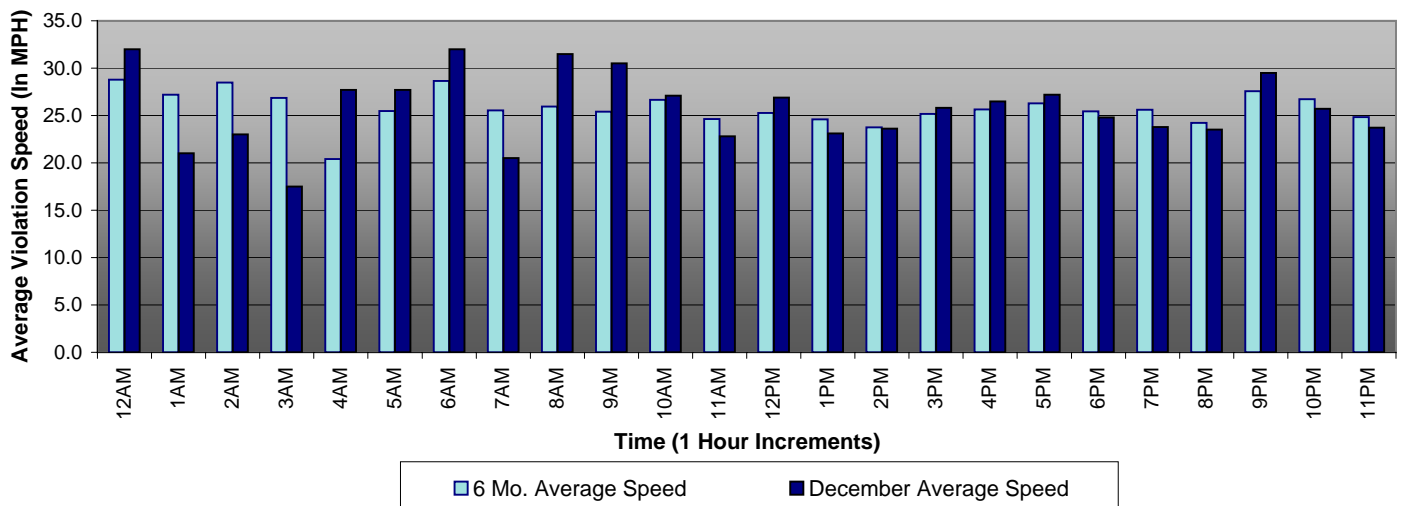
2008 Average Violation Speed (Combined 6 Month Trend, July - December)



2008 Average Violation Speed (Weekdays 6 Mo. Trend, July - December)



2008 Average Violation Speed (Weekends, 6 Mo. Trend, July - December)





expertise in action™

Los Angeles County MTA Orange Line Monthly Citation Yield - By Location *December 2008*

Direction	Location	Code	Days of Enforcement	Events	Violations	Citations	Yield*
NB	Tujunga Ave @ Busway	1301	31	115	108	24	0.77
SB	Tujunga Ave @ Busway	1302	31	28	23	13	0.42
EB	Oxnard St. @ Buffalo Ave.	1313	31	100	58	35	1.13
WB	Oxnard St. @ Buffalo Ave.	1314	31	153	49	29	0.94
NB	Woodman Ave. @ Busway	1321	31	46	38	10	0.32
SB	Woodman Ave. @ Busway	1322	31	124	98	66	2.13
NB	Kester Ave. @ Busway	1331	31	50	31	19	0.61
SB	Kester Ave. @ Busway	1332	31	90	82	68	2.19
NB	Sepulveda Blvd. @ Busway	1341	31	165	159	95	3.06
SB	Sepulveda Blvd. @ Busway	1342	31	161	146	70	2.26
NB	Woodley @ Busway	1351	31	124	76	34	1.10
SB	Woodley @ Busway	1352	31	46	38	28	0.90
NB	Balboa Blvd. @ Busway	1361	31	145	145	85	2.74
SB	Balboa Blvd. @ Busway	1362	31	30	28	9	0.29
NB	White Oak Ave. @ Busway	1371	31	33	26	21	0.68
SB	White Oak Ave. @ Busway	1372	31	173	116	87	2.81
SB	Lindley Ave. @ Busway	1382	31	379	137	50	1.61
WB to NB	Lindley Ave. @ Oxnard St.	1385	31	260	9	4	0.13
NB	Reseda Blvd. @ Busway	1391	31	157	135	88	2.84
SB	Reseda Blvd. @ Busway	1392	31	48	38	22	0.71
SB	Mason Ave. @ Busway	1402	31	492	316	235	7.58
WB to NB	Mason Ave. @ Victory Blvd.	1405	31	327	61	25	0.81
SB	De Soto Ave. @ Busway	1412	31	358	324	234	7.55
WB to NB	De Soto Ave. @ Victory Blvd.	1415	31	155	39	5	0.16
TOTALS FOR December 2008			31	3759	2280	1356	43.74

*Yield is the number of citations issued per day of enforcement.



expertise in action™

Los Angeles County MTA Orange Line Disposition Summary Report December 2008

	Dec-08		3 Month Average		YTD Total		YTD Average		2007 Average	
Disposition Type	Count /Amount Paid		Count /Amount Paid		Count /Amount Paid		Count /Amount Paid		Count /Amount Paid	
<i>Bail Forfeiture</i>	346	\$141,285.00	423	\$174,931.67	5340	\$2,225,004.99	445	\$185,417.08	570	\$227,104.05
<i>Fine Paid</i>	144	\$57,808.96	128	\$54,514.67	1527	\$641,621.46	127	\$53,468.46	65	\$26,387.25
<i>Department Void</i>	15	\$0.00	21	\$0.00	192	\$0.00	16	\$0.00	19	\$0.00
<i>Not Guilty</i>	106	\$0.00	126	\$0.00	1280	\$0.00	107	\$0.00	93	\$0.00
<i>Section D Void</i>	189	\$0.00	380	\$0.00	3954	\$0.00	330	\$0.00	424	\$0.00
<i>Traffic School</i>	408	\$164,948.00	516	\$210,505.67	6792	\$2,777,639.70	566	\$231,469.98	627	\$254,893.67
Court Gross Total	1208	\$364,041.96	1,594	\$439,952.00	19,085	\$5,644,266.15	1,590	\$470,355.51	1,798	\$508,384.97
MTA Gross Total*	898	\$137,642.10	1067	\$163,419.79	13659	\$2,091,209.31	1138	\$174,267.44	1262	\$193,253.32

*Logic built on following model:

MTA receives \$155.13 of \$381 citation where bail forfeiture and fine paid occurs

MTA receives \$151.05 of \$381 citation when traffic school option is paid for



expertise in action™

Los Angeles County MTA Orange Line Performance Report December 2008

	<u>Total</u> <u>Events</u>	<u>Non</u> <u>Violations</u>	<u>Potential</u> <u>Violations</u>	<u>Percent</u> <u>Citable</u>	<u>Non Issued</u> <u>Violations</u>	<u>No DMV</u> <u>Match</u>	<u>Police/</u> <u>Client</u> <u>Rejected</u>	<u>Citations</u> <u>Issued</u>	<u>DMV</u> <u>Match</u> <u>Rate</u>	<u>Issuance</u> <u>Rate</u>	<u>Dispo</u> <u>Paid</u>	<u>Pay</u> <u>Rate</u>	<u>Closed</u> <u>No Pay</u>	<u>Pending</u>	<u>Closure</u> <u>Rate</u>
Aug-06	3854	864	2990	77.58%	2735	45	20	255	85.94%	8.53%	201	79%	19	35	86%
Sep-06	4212	934	3278	77.83%	1562	199	23	1716	89.73%	52.35%	1,366	80%	138	212	88%
Oct-06	3855	788	3067	79.56%	1069	225	27	1998	90.00%	65.15%	1,570	79%	178	250	87%
Nov-06	12589	8872	3717	29.53%	2186	169	27	1531	90.21%	41.19%	1,186	77%	117	228	85%
Dec-06	13009	9452	3557	27.34%	1792	190	16	1765	90.36%	49.62%	1,383	78%	135	247	86%
Jan-07	9820	6557	3263	33.23%	1376	185	29	1887	91.19%	57.83%	1,435	76%	133	319	83%
Feb-07	6746	3641	3105	46.03%	1180	255	15	1925	88.38%	62.00%	1,459	76%	150	316	84%
Mar-07	5452	2081	3371	61.83%	1261	318	17	2110	86.99%	62.59%	1,667	79%	152	291	86%
Apr-07	5235	2116	3119	59.58%	1080	283	35	2039	87.99%	65.37%	1,588	78%	130	321	84%
May-07	4735	1643	3092	65.30%	1005	268	37	2087	88.80%	67.50%	1567	75%	133	387	81%
Jun-07	5004	1725	3279	65.53%	1147	288	36	2132	88.27%	65.02%	1594	75%	129	409	81%
Jul-07	5396	1906	3490	64.68%	1919	273	43	1571	85.53%	45.01%	1110	71%	102	359	77%
Aug-07	5664	2259	3405	60.12%	1507	321	131	1898	86.34%	55.74%	1303	69%	134	461	76%
Sep-07	4021	1247	2774	68.99%	1111	245	99	1663	87.79%	59.95%	1069	64%	112	482	71%
Oct-07	4952	1811	3141	63.43%	1469	215	193	1672	89.66%	53.23%	1026	61%	137	509	70%
Nov-07	4676	1810	2866	61.29%	1201	180	151	1665	90.98%	58.09%	1023	61%	150	492	70%
Dec-07	4466	1783	2683	60.08%	1269	207	191	1414	88.58%	52.70%	903	64%	130	381	73%
Jan-08	4150	1651	2499	60.22%	1142	188	166	1357	89.01%	54.30%	1026	76%	89	242	82%
Feb-08	3875	1446	2429	62.68%	1245	157	206	1184	89.85%	48.74%	880	74%	101	203	83%
Mar-08	4696	1887	2809	59.82%	1570	169	148	1239	89.14%	44.11%	887	72%	73	279	77%
Apr-08	4417	1835	2582	58.46%	1297	134	72	1285	91.01%	49.77%	911	71%	78	296	77%
May-08	4764	1847	2917	61.23%	1642	178	157	1275	88.94%	43.71%	876	69%	73	326	74%
Jun-08	4401	1484	2917	66.28%	1481	182	120	1436	89.53%	49.23%	911	63%	90	435	70%
Jul-08	4097	1558	2539	61.97%	1230	170	94	1309	89.19%	51.56%	707	54%	140	462	65%
Aug-08	4211	1623	2588	61.46%	1222	167	161	1366	90.14%	52.78%	608	45%	77	681	50%
Sep-08	4446	1868	2578	57.98%	1153	173	100	1425	89.81%	55.28%	434	30%	67	924	35%
Oct-08	4412	1715	2697	61.13%	1179	139	115	1518	92.16%	56.28%	209	14%	23	1,286	15%
Nov-08	3795	1485	2310	60.87%	948	145	125	1362	91.12%	58.96%	56	4%	45	1,261	7%
Dec-08	3759	1479	2280	60.65%	924	144	97	1356	90.98%	59.47%	9	1%	15	1,332	2%
Total	154,709	69,367	85,342	55.16%	39,902	5,812	2,651	45,440	89.22%	53.24%	28,964	75.36%	3,050	13,426	82.56%

*Pay Rate and Closure Rate percentages are based on a 4 month lag