

City of West Hollywood

Photo Enforcement Program



Monthly Report



May 2014



Prepared by: Xerox State and Local Solutions
Confidential



Table of Contents

Page Title	Page
<i>Executive Summary</i>	2
<i>Approach Summary Report, All Locations</i>	4
<i>Approach Summary Report, Location 3103: E/B Beverly @ Robertson</i>	5
<i>Approach Summary Report, Location 3104: W/B Beverly @ Robertson</i>	6
<i>Approach Summary Report, Location 3111: N/B Fairfax @ Fountain</i>	7
<i>Approach Summary Report, Location 3112: S/B Fairfax @ Fountain</i>	8
<i>Approach Summary Report, Location 3113: E/B Fountain @ Fairfax</i>	9
<i>Approach Summary Report, Location 3121: N/B Crescent Heights @ Fountain</i>	10
<i>Approach Summary Report, Location 3122: S/B Crescent Heights @ Fountain</i>	11
<i>Approach Summary Report, Location 3123: E/B Fountain @ Crescent Heights</i>	12
<i>Approach Summary Report, Location 3124: W/B Fountain @ Crescent Heights</i>	13
<i>Approach Summary Report, Location 3131: N/B La Cienega @ Melrose</i>	14
<i>Approach Summary Report, Location 3132: S/B La Cienega @ Melrose</i>	15
<i>Approach Summary Report, Location 3133: E/B Melrose @ La Cienega</i>	16
<i>Approach Summary Report, Location 3141: N/B La Brea @ Fountain</i>	17
<i>Approach Summary Report, Location 3142: S/B La Brea @ Fountain</i>	18
<i>Approach Summary Report, Location 3143: E/B Sunset @ La Cienega</i>	19
<i>Approach Summary Report, Location 3144: W/B Sunset @ La Cienega</i>	20
<i>Approach Summary Report, Location 3151: N/B Fairfax @ Santa Monica</i>	21
<i>Approach Summary Report, Location 3152: S/B Fairfax @ Santa Monica</i>	22
<i>Approach Summary Report, Location 3153: E/B Santa Monica @ Fairfax</i>	23
<i>Approach Summary Report, Location 3154: W/B Santa Monica @ Fairfax</i>	24
<i>Approach Summary Report, Location 3161: N/B La Brea @ Santa Monica</i>	25
<i>Approach Summary Report, Location 3162: S/B La Brea @ Santa Monica</i>	26
<i>Approach Summary Report, Location 3163: E/B Santa Monica @ La Brea</i>	27
<i>Approach Summary Report, Location 3164: W/B Santa Monica @ La Brea</i>	28
<i>Customer Service Report</i>	29
<i>Monthly Citation Yield Report</i>	30
<i>Camera Rotation Log</i>	31
<i>Performance Report</i>	32
<i>Disposition Summary Report</i>	33

Executive Summary

In May 2014, the photo enforcement project for the City of West Hollywood captured 3,932 events. The project recorded 1,766 violations and 2,166 non-violations. The Sheriff's Department issued 792 citations reflecting a 45% issuance rate and a controllable issuance rate of 96%.

In May there were the following controllable non-issued violations:

- 16 identified as dark interior (no pattern, usual issues of sun glare)
- 2 identified as operator/data error (at 3162 on 5/1, illegible data box, resolved and isolated)
- 3 identified as Framing of Car (at 3144 and 3151, and 3152 isolated)
- 6 identified as Exposure (4 at 3113 between 5/20 and 5/21 no flash, resolved and 1 each at 3141 and 3162, no flash, isolated)
- 4 identified as Equipment Malfunction (different locations, unrelated, film jams, isolated)

On 4/27 location 3161 was hit by a vehicle. The camera was moved to 3152 while we worked on replacing the pole. The repairs were completed at the end of May and as of June 1 the camera was back in service at 3161.

In the News - Photo Enforcement Around the Country

Riverside, California Prepares To Dump Red Light Cameras

City council in Riverside, California votes 6-1 on preliminary motion to cancel red light camera contract with Redflex. www.thenewspaper.com

Officials in Riverside, California have lost faith in red light cameras after eight years of use. On Tuesday, Councilman Chris MacArthur moved to have staff draft a proposal that cancel the city's contract with Redflex Traffic Systems of Australia and bring down all fourteen cameras -- to applause in the council chambers. The motion passed six to one.

MacArthur made his case by listing each photo enforced intersection in his ward along with the number of accidents before and after camera installation. There was no reduction in collisions. MacArthur pointed out that the devices are so unpopular that more than 50 cities in California have dropped photo enforcement, including [Corona](#), [Loma Linda](#), [Murrieta](#), [Poway](#), [San Bernardino](#) and [Yucaipa](#). MacArthur surveyed his constituents, and of the 125 who responded, 78 percent opposed cameras, with one resident calling it "a parasitic source of city income."

Councilman Mike Soubirous, a former police officer, went out and photographed one of the camera-monitored intersections to point out that the red signal is turned in such a way that it is only half-visible from the far right-hand lane. This makes the signal much less visible to traffic turning right, and drivers who do not see it are hit with a \$500 fine. Soubirous asked Caltrans to add an additional signal light. Soubirous also pointed out that the city was one of the few to have photo radar back in 1993 and the public is reacting to red light cameras in the same way.

"It wasn't very popular with the people, and off it went," Soubirous said. "Everybody I talked to as I walked on my campaign... It seems this transcends demographics. Whether you're rich or poor, old or young... The vast majority of people hate these things... We were one of the first cities around to get photo radar, and we got rid of it. The other cities around us are all dismantling the red light cameras. I think the time has come, and the public will be very, very happy when we do."

The city council [voted in 2012](#) to put the question of whether cameras should be used to voters. Eight months later, city leaders [renege on their promise](#) and withdrew the ballot measure. The new motion to terminate the camera program will be considered in three weeks.

ATS Sues Xerox Over Document Production

Xerox wants ATS to pay \$60,750 for copies of emails related to its red light camera program. ATS sues over the high fee. www.thenewspaper.com

The red light camera program in Philadelphia, Pennsylvania has spawned multiple lawsuits in state and federal courts. The former vendor is suing the city, the city is suing the former vendor and the former vendor is suing the new vendor. In the latest suit, ousted red light camera provider American Traffic Solutions (ATS) is demanding that the new provider, Xerox, hand over documents related to its communications with the city. The copier giant says it will only hand over the records if ATS pays \$60,750 up front to cover the cost of retrieving the data. On June 20, ATS petitioned the US District Court for the District of Maryland to intervene.

ATS wants emails and documents sent between Xerox and the Philadelphia Parking Authority as part of a lawsuit over the company losing the contract to run the red light camera program. The city is suing ATS to order the company to hand over the underground wiring used to hook up the cameras so that Xerox can use it. ATS refuses to do so, claiming the wiring and conduit belongs to ATS.

ATS is fighting an uphill battle. A Pennsylvania state court last month upheld the city's right to switch vendor ([view ruling](#)), but the often acrimonious dispute continues in federal court. When ATS served a subpoena for the documents in last month, Xerox Vice President Wes E. Wadle questioned the sincerity of ATS in handing the legal paperwork to Customer Service Specialist Lauren Rupkey in the Baltimore office of Corporation Service Company, Xerox's registered agent, rather than sending it to the general counsel's office at Xerox directly.

"Your statement about our sincerity in serving the subpoena is baseless and ridiculous," ATS attorney Gerald E. Burns responded in a May 13 email. "If anything, it is your 'sincerity' that is in question."

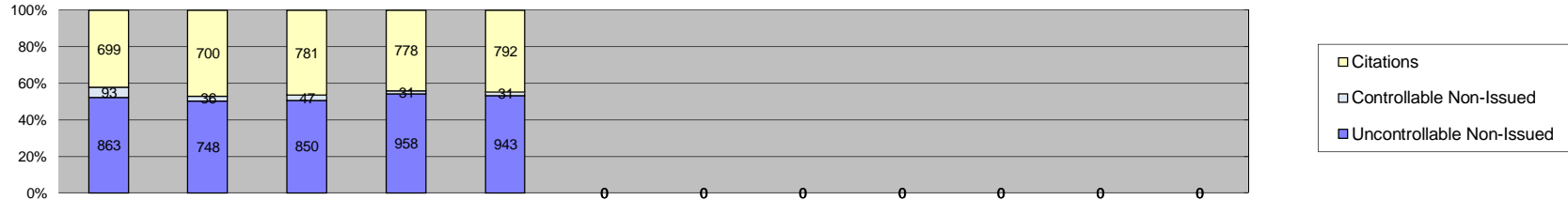
After a week, Xerox said it would provide the documents as soon as it receives a check for \$60,750 from ATS.

"As we discussed yesterday, Xerox will not begin collecting electronic data until ATS agrees to pay for the costs incurred," Xerox attorney John C. Grugan wrote in a May 21 email. "I understand that ATS is taking the position that it is not required to do so, but I believe a fair reading of the case law supports Xerox's position."

ATS insists that, at a minimum, that Xerox should turn over the paper documents in the copier company's possession, which Xerox has the capability of producing and reproducing. Xerox says the documents are proprietary or covered by attorney-client privilege and the ATS request overly broad



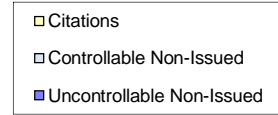
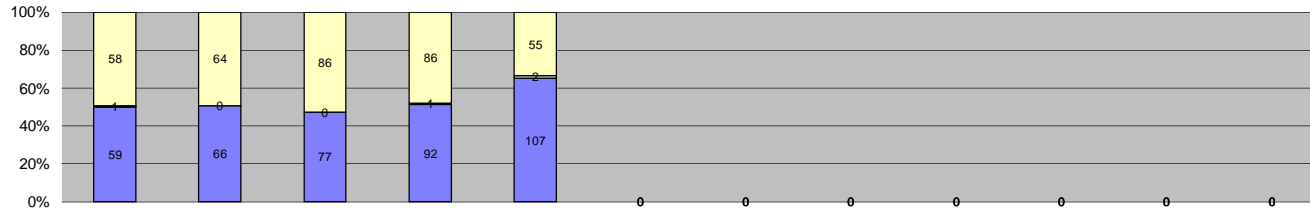
City of West Hollywood Approach Summary Report All Locations



Events	Jan-14	Feb-14	Mar-14	Apr-14	May-14	Jun-14	Jul-14	Aug-14	Sep-14	Oct-14	Nov-14	Dec-14	Year to Date Average		2013 Average		
													Quantity	%	Quantity	%	
Non-Violations	1,979	1,695	2,355	2,334	2,166									2,106	56%	2,330	55%
Violations	1,655	1,484	1,678	1,767	1,766									1,670	44%	1,942	45%
Total:	3,634	3,179	4,033	4,101	3,932									3,776	100%	4,272	100%
Violations																	
Uncontrollable Non-Issued	863	748	850	958	943									872	52%	904	47%
Controllable Non-Issued	93	36	47	31	31									48	3%	38	2%
Citations	699	700	781	778	792									750	45%	1,000	51%
Total:	1,655	1,484	1,678	1,767	1,766									1,670	100%	1,942	100%
Non-Violations																	
Rear Axle Violation	16	14	16	18	21									17	1%	14	1%
Emergency Vehicle	100	67	97	80	63									81	4%	82	4%
Right Turn	1,089	1,000	878	1,525	1,404									1,179	56%	1,129	48%
No Violation Occurred	774	614	1,364	711	678									828	39%	1,106	47%
Total:	1,979	1,695	2,355	2,334	2,166									2,106	100%	2,330	100%
Uncontrollable Non-Issued Violations																	
No Plate	323	288	348	394	365									344	35%	377	41%
Out of State Plate	67	83	97	97	70									83	8%	15	2%
Glare on Plate	4	19	22	26	39									22	2%	20	2%
Illegible Plate	47	23	33	29	39									34	3%	42	5%
Plate Obstructed	9	20	17	12	9									13	1%	19	2%
Windshield Glare	46	63	82	134	176									100	10%	150	16%
Driver Obstructed	16	29	22	23	28									24	2%	24	3%
Car Obstructed	20	24	15	20	21									20	2%	34	4%
No DMV Match Found	133	141	134	132	117									131	13%	176	19%
LASD Expired	142	0	0	0	0									142	14%	9	1%
LASD Return	50	58	80	77	72									67	7%	34	4%
Yellow Interval Not Met	0	0	0	0	0									0	0%	0	0%
Other	6	0	0	14	7									9	1%	9	1%
Total:	863	748	850	958	943									990	100%	909	100%
Controllable Non-Issued Violations																	
Framing of Plate	0	0	2	2	0									2	4%	2	3%
Focus / Clarity of Plate	0	0	0	0	0									0	0%	2	3%
Dark Interior	15	8	24	18	16									16	31%	21	35%
Framing of Driver	0	0	0	0	0									0	0%	0	0%
Focus / Clarity of Driver	1	0	0	0	0									1	2%	2	4%
Framing of Car	0	1	0	2	3									2	4%	4	6%
Operator / Data Error	3	1	1	0	2									2	3%	4	7%
Exposure	0	0	3	1	6									3	6%	2	4%
Equipment Malfunction	74	26	16	8	4									26	48%	5	9%
Xerox Expired	0	0	1	0	0									1	2%	17	28%
Total:	93	36	47	31	31									53	100%	59	100%
Summary Metrics																	
Daily Ave Vehicle Passes	240,529	203,315	270,674	243,386	244,865									240,554		264,429	
Ave Issued Speed	33	32	32	32	33									32		32	
Ave Issued Red Seconds	1.0	0.9	1.0	0.7	0.8									0.9		0.8	
Citation / Violation Iss Rate	42%	47%	47%	44%	45%									45%		52%	
Controllable Iss Rate	88%	95%	94%	96%	96%									94%		96%	



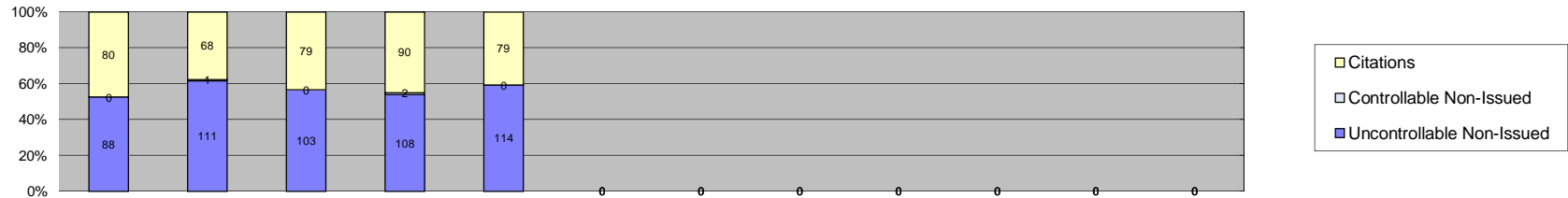
**City of West Hollywood
Approach Summary Report
Location 3103: E/B Beverly @ Robertson (GLD-4 Camera System)**



Events	Jan-14	Feb-14	Mar-14	Apr-14	May-14	Jun-14	Jul-14	Aug-14	Sep-14	Oct-14	Nov-14	Dec-14	Year to Date Average		2013 Average		
													Quantity	%	Quantity	%	
Non-Violations	35	39	39	46	60									44	23%	45	21%
Violations	118	130	163	179	164									151	77%	173	79%
Total:	153	169	202	225	224									195	100%	218	100%
Violations																	
Uncontrollable Non-Issued	59	66	77	92	107									80	53%	88	51%
Controllable Non-Issued	1	0	0	1	2									1	1%	8	4%
Citations	58	64	86	86	55									70	46%	79	45%
Total:	118	130	163	179	164									151	100%	174	100%
Non-Violations																	
Rear Axle Violation	0	0	0	0	1									1	2%	1	2%
Emergency Vehicle	4	12	14	10	7									9	21%	8	17%
Right Turn	1	1	4	2	2									2	4%	2	5%
No Violation Occurred	30	26	21	34	50									32	72%	35	76%
Total:	35	39	39	46	60									45	100%	46	100%
Uncontrollable Non-Issued Violations																	
No Plate	23	21	28	32	38									28	31%	29	31%
Out of State Plate	4	10	11	8	3									7	8%	1	1%
Glare on Plate	0	0	0	0	1									1	1%	2	2%
Illegible Plate	0	0	0	1	1									1	1%	3	4%
Plate Obstructed	1	1	1	1	1									1	1%	2	2%
Windshield Glare	0	1	6	10	27									11	12%	29	30%
Driver Obstructed	4	8	5	7	4									6	6%	6	7%
Car Obstructed	1	4	1	2	1									2	2%	2	2%
No DMV Match Found	4	10	8	11	12									9	10%	10	11%
LASD Expired	11	0	0	0	0									11	12%	1	1%
LASD Return	11	11	17	20	19									16	17%	7	8%
Yellow Interval Not Met	0	0	0	0	0									0	0%	0	0%
Other	0	0	0	0	0									0	0%	1	1%
Total:	59	66	77	92	107									93	100%	95	100%
Controllable Non-Issued Violations																	
Framing of Plate	0	0	0	0	0									0	0%	0	0%
Focus / Clarity of Plate	0	0	0	0	0									0	0%	2	8%
Dark Interior	1	0	0	0	0									1	40%	5	21%
Framing of Driver	0	0	0	0	0									0	0%	0	0%
Focus / Clarity of Driver	0	0	0	0	0									0	0%	3	11%
Framing of Car	0	0	0	0	0									0	0%	0	0%
Operator / Data Error	0	0	0	0	0									0	0%	1	4%
Exposure	0	0	0	0	0									0	0%	2	7%
Equipment Malfunction	0	0	0	1	2									2	60%	3	10%
Xerox Expired	0	0	0	0	0									0	0%	9	38%
Total:	1	0	0	1	2									3	100%	24	100%
Summary Metrics													Year to Date Average		2013 Average		
Daily Ave Vehicle Passes	10,405	10,269	11,104	9,996	10,791									10,513		11,391	
Ave Issued Speed	29	30	30	30	30									30		30	
Ave Issued Red Seconds	1.2	1.7	0.9	0.8	0.7									1		0.8	
Citation / Violation Iss Rate	49%	49%	53%	48%	34%									47%		48%	
Controllable Iss Rate	98%	100%	100%	99%	96%									99%		91%	



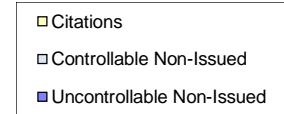
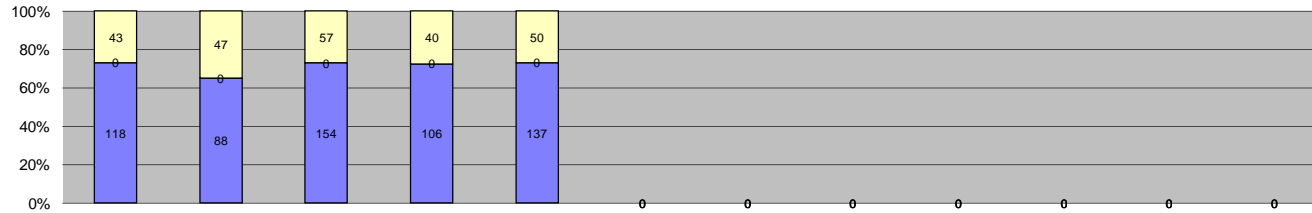
**City of West Hollywood
Approach Summary Report
Location 3104: W/B Beverly @ Robertson (GLD-4 Camera System)**



Events	Jan-14	Feb-14	Mar-14	Apr-14	May-14	Jun-14	Jul-14	Aug-14	Sep-14	Oct-14	Nov-14	Dec-14	Year to Date Average		2013 Average		
													Quantity	%	Quantity	%	
Non-Violations	10	12	9	8	8									9	5%	11	6%
Violations	168	180	182	200	193									185	95%	182	94%
Total:	178	192	191	208	201									194	100%	193	100%
Violations																	
Uncontrollable Non-Issued	88	111	103	108	114									105	56%	90	49%
Controllable Non-Issued	0	1	0	2	0									2	1%	3	2%
Citations	80	68	79	90	79									79	43%	90	49%
Total:	168	180	182	200	193									186	100%	183	100%
Non-Violations																	
Rear Axle Violation	1	3	0	0	3									2	20%	3	22%
Emergency Vehicle	1	0	1	0	0									1	9%	2	14%
Right Turn	0	0	0	1	0									1	9%	1	12%
No Violation Occurred	8	9	8	7	5									7	63%	6	52%
Total:	10	12	9	8	8									12	100%	12	100%
Uncontrollable Non-Issued Violations																	
No Plate	25	34	34	37	34									33	28%	32	34%
Out of State Plate	6	10	5	10	7									8	6%	2	2%
Glare on Plate	0	5	2	4	5									4	3%	4	4%
Illegible Plate	4	2	8	4	6									5	4%	8	8%
Plate Obstructed	1	1	0	1	2									1	1%	2	2%
Windshield Glare	4	15	16	18	24									15	13%	12	13%
Driver Obstructed	6	10	7	7	8									8	6%	8	8%
Car Obstructed	0	2	0	1	1									1	1%	2	2%
No DMV Match Found	17	20	17	14	13									16	14%	16	17%
LASD Expired	14	0	0	0	0									14	12%	2	2%
LASD Return	11	12	14	12	14									13	11%	7	8%
Yellow Interval Not Met	0	0	0	0	0									0	0%	0	0%
Other	0	0	0	0	0									0	0%	0	0%
Total:	88	111	103	108	114									118	100%	94	100%
Controllable Non-Issued Violations																	
Framing of Plate	0	0	0	1	0									1	33%	1	8%
Focus / Clarity of Plate	0	0	0	0	0									0	0%	1	8%
Dark Interior	0	0	0	1	0									1	33%	3	21%
Framing of Driver	0	0	0	0	0									0	0%	0	0%
Focus / Clarity of Driver	0	0	0	0	0									0	0%	1	8%
Framing of Car	0	1	0	0	0									1	33%	0	0%
Operator / Data Error	0	0	0	0	0									0	0%	0	0%
Exposure	0	0	0	0	0									0	0%	1	8%
Equipment Malfunction	0	0	0	0	0									0	0%	2	11%
Xerox Expired	0	0	0	0	0									0	0%	5	38%
Total:	0	1	0	2	0									3	100%	13	100%
Summary Metrics													Year to Date Average		2013 Average		
Daily Ave Vehicle Passes	9,727	9,485	10,061	9,255	9,673									9,640		11,757	
Ave Issued Speed	23	24	22	23	23									23		22	
Ave Issued Red Seconds	0.6	0.6	0.5	0.5	0.5									1		0.6	
Citation / Violation Iss Rate	48%	38%	43%	45%	41%									43%		50%	
Controllable Iss Rate	100%	99%	100%	98%	100%									99%		98%	



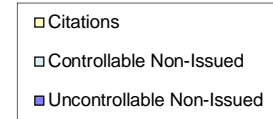
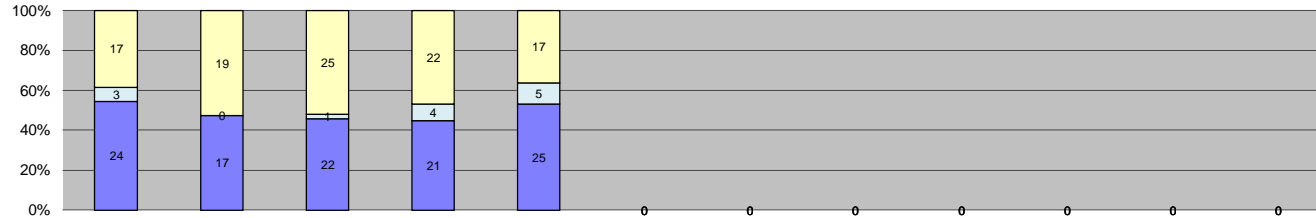
**City of West Hollywood
Approach Summary Report
Location 3111: N/B Fairfax @ Fountain (GLD-4 Camera System)**



Events	Jan-14	Feb-14	Mar-14	Apr-14	May-14	Jun-14	Jul-14	Aug-14	Sep-14	Oct-14	Nov-14	Dec-14	Year to Date Average		2013 Average		
													Quantity	%	Quantity	%	
Non-Violations	20	14	18	22	22									19	10%	22	15%
Violations	161	135	211	146	187									168	90%	127	85%
Total:	181	149	229	168	209									187	100%	149	100%
Violations																	
Uncontrollable Non-Issued	118	88	154	106	137									121	72%	76	59%
Controllable Non-Issued	0	0	0	0	0									0	0%	4	3%
Citations	43	47	57	40	50									47	28%	48	38%
Total:	161	135	211	146	187									168	100%	129	100%
Non-Violations																	
Rear Axle Violation	3	0	0	6	4									4	21%	2	7%
Emergency Vehicle	4	2	1	2	4									3	12%	3	14%
Right Turn	4	1	6	7	5									5	22%	4	17%
No Violation Occurred	9	11	11	7	9									9	45%	14	62%
Total:	20	14	18	22	22									21	100%	23	100%
Uncontrollable Non-Issued Violations																	
No Plate	37	23	43	34	34									34	26%	27	31%
Out of State Plate	11	6	17	5	8									9	7%	2	2%
Glare on Plate	4	11	18	13	26									14	11%	13	15%
Illegible Plate	27	11	15	15	20									18	13%	16	18%
Plate Obstructed	0	2	3	0	0									3	2%	2	2%
Windshield Glare	8	12	25	15	24									17	13%	8	10%
Driver Obstructed	1	1	3	1	3									2	1%	2	3%
Car Obstructed	1	0	1	1	1									1	1%	1	2%
No DMV Match Found	12	7	15	11	15									12	9%	9	10%
LASD Expired	11	0	0	0	0									11	8%	4	4%
LASD Return	5	15	14	11	5									10	8%	2	2%
Yellow Interval Not Met	0	0	0	0	0									0	0%	0	0%
Other	1	0	0	0	1									1	1%	1	1%
Total:	118	88	154	106	137									132	100%	86	100%
Controllable Non-Issued Violations																	
Framing of Plate	0	0	0	0	0									0	0%	1	7%
Focus / Clarity of Plate	0	0	0	0	0									0	0%	0	0%
Dark Interior	0	0	0	0	0									0	0%	4	26%
Framing of Driver	0	0	0	0	0									0	0%	0	0%
Focus / Clarity of Driver	0	0	0	0	0									0	0%	1	7%
Framing of Car	0	0	0	0	0									0	0%	1	7%
Operator / Data Error	0	0	0	0	0									0	0%	0	0%
Exposure	0	0	0	0	0									0	0%	1	7%
Equipment Malfunction	0	0	0	0	0									0	0%	2	14%
Xerox Expired	0	0	0	0	0									0	0%	5	34%
Total:	0	0	0	0	0									0	0%	15	100%
Summary Metrics													Year to Date Average		2013 Average		
Daily Ave Vehicle Passes	15,341	13,516	16,125	13,396	16,168									14,909		15,882	
Ave Issued Speed	33	33	32	33	33									33		33	
Ave Issued Red Seconds	1.1	0.5	1.3	0.4	1.2									1		1	
Citation / Violation Iss Rate	27%	35%	27%	27%	27%									29%		40%	
Controllable Iss Rate	100%	100%	100%	100%	100%									100%		95%	



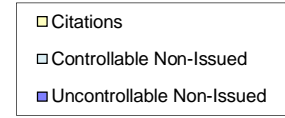
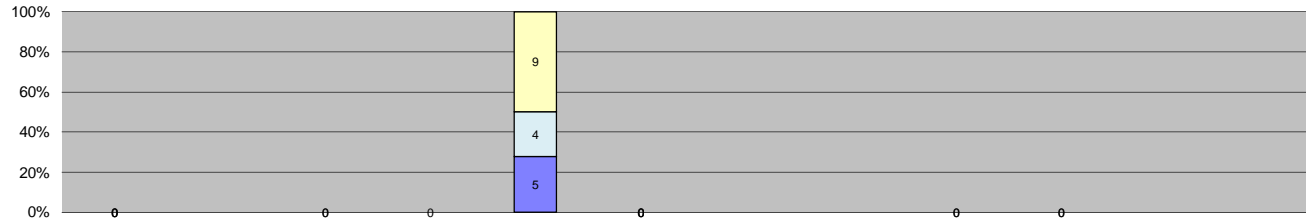
**City of West Hollywood
Approach Summary Report
Location 3112: S/B Fairfax @ Fountain (GLD-4 Camera System)**



Events	Jan-14	Feb-14	Mar-14	Apr-14	May-14	Jun-14	Jul-14	Aug-14	Sep-14	Oct-14	Nov-14	Dec-14	Year to Date Average		2013 Average		
													Quantity	%	Quantity	%	
Non-Violations	19	14	12	14	10									14	24%	10	21%
Violations	44	36	48	47	47									44	76%	39	79%
Total:	63	50	60	61	57									58	100%	49	100%
Violations																	
Uncontrollable Non-Issued	24	17	22	21	25									22	48%	18	47%
Controllable Non-Issued	3	0	1	4	5									3	7%	2	6%
Citations	17	19	25	22	17									20	44%	18	47%
Total:	44	36	48	47	47									45	100%	39	100%
Non-Violations																	
Rear Axle Violation	4	1	1	2	1									2	13%	2	14%
Emergency Vehicle	9	4	1	1	1									3	23%	3	23%
Right Turn	2	4	3	4	4									3	25%	3	27%
No Violation Occurred	4	5	7	7	4									5	39%	4	37%
Total:	19	14	12	14	10									14	100%	11	100%
Uncontrollable Non-Issued Violations																	
No Plate	9	6	7	10	15									9	35%	8	29%
Out of State Plate	4	3	3	2	2									3	10%	1	5%
Glare on Plate	0	0	0	0	0									0	0%	2	6%
Illegible Plate	0	0	1	1	1									1	4%	1	5%
Plate Obstructed	1	4	1	0	1									2	7%	2	6%
Windshield Glare	4	0	2	2	3									3	10%	4	16%
Driver Obstructed	0	0	0	0	1									1	4%	2	6%
Car Obstructed	0	2	1	0	0									2	6%	1	4%
No DMV Match Found	2	2	4	3	1									2	9%	4	15%
LASD Expired	2	0	0	0	0									2	7%	0	0%
LASD Return	2	0	3	3	1									2	8%	2	6%
Yellow Interval Not Met	0	0	0	0	0									0	0%	0	0%
Other	0	0	0	0	0									0	0%	1	4%
Total:	24	17	22	21	25									27	100%	27	100%
Controllable Non-Issued Violations																	
Framing of Plate	0	0	1	0	0									1	20%	0	0%
Focus / Clarity of Plate	0	0	0	0	0									0	0%	0	0%
Dark Interior	3	0	0	4	5									4	80%	2	53%
Framing of Driver	0	0	0	0	0									0	0%	0	0%
Focus / Clarity of Driver	0	0	0	0	0									0	0%	1	23%
Framing of Car	0	0	0	0	0									0	0%	1	23%
Operator / Data Error	0	0	0	0	0									0	0%	0	0%
Exposure	0	0	0	0	0									0	0%	0	0%
Equipment Malfunction	0	0	0	0	0									0	0%	0	0%
Xerox Expired	0	0	0	0	0									0	0%	0	0%
Total:	3	0	1	4	5									5	100%	4	100%
Summary Metrics																	
Daily Ave Vehicle Passes	14,376	13,773	15,201	14,078	16,125									14,711		15,040	
Ave Issued Speed	35	28	34	33	33									33		35	
Ave Issued Red Seconds	0.9	5.9	0.7	0.5	0.5									2		0.6	
Citation / Violation Iss Rate	39%	53%	52%	47%	36%									45%		47%	
Controllable Iss Rate	85%	100%	96%	85%	77%									89%		89%	



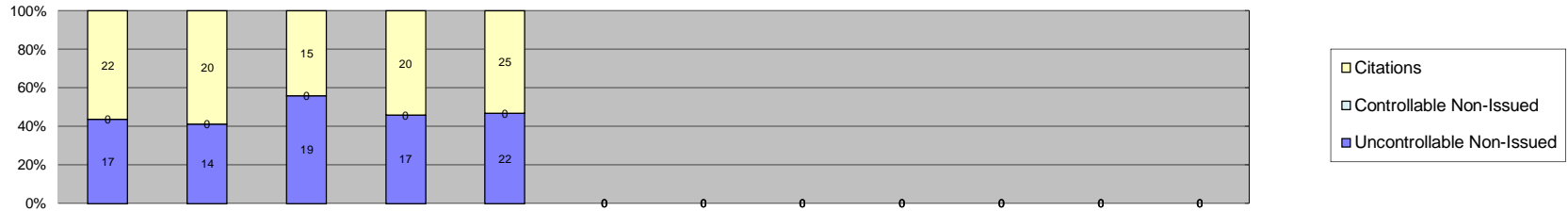
**City of West Hollywood
Approach Summary Report
Location 3113: E/B Fountain @ Fairfax (GLD-4 Camera System)**



Events	Jan-14	Feb-14	Mar-14	Apr-14	May-14	Jun-14	Jul-14	Aug-14	Sep-14	Oct-14	Nov-14	Dec-14	Year to Date Average		2013 Average		
													Quantity	%	Quantity	%	
Non-Violations	0	0	0	0	47									47	72%	30	70%
Violations	0	0	0	0	18									18	28%	13	30%
Total:	0	0	0	0	65									65	100%	43	100%
Violations																	
Uncontrollable Non-Issued	0	0	0	0	5									5	28%	8	51%
Controllable Non-Issued	0	0	0	0	4									4	22%	0	0%
Citations	0	0	0	0	9									9	50%	8	49%
Total:	0	0	0	0	18									18	100%	16	100%
Non-Violations																	
Rear Axle Violation	0	0	0	0	0									0	0%	0	0%
Emergency Vehicle	0	0	0	0	0									0	0%	2	5%
Right Turn	0	0	0	0	35									35	74%	20	66%
No Violation Occurred	0	0	0	0	12									12	26%	9	29%
Total:	0	0	0	0	47									47	100%	31	100%
Uncontrollable Non-Issued Violations																	
No Plate	0	0	0	0	4									4	80%	4	35%
Out of State Plate	0	0	0	0	0									0	0%	0	0%
Glare on Plate	0	0	0	0	0									0	0%	0	0%
Illegible Plate	0	0	0	0	0									0	0%	1	10%
Plate Obstructed	0	0	0	0	0									0	0%	0	0%
Windshield Glare	0	0	0	0	1									1	20%	2	20%
Driver Obstructed	0	0	0	0	0									0	0%	0	0%
Car Obstructed	0	0	0	0	0									0	0%	1	10%
No DMV Match Found	0	0	0	0	0									0	0%	3	25%
LASD Expired	0	0	0	0	0									0	0%	0	0%
LASD Return	0	0	0	0	0									0	0%	0	0%
Yellow Interval Not Met	0	0	0	0	0									0	0%	0	0%
Other	0	0	0	0	0									0	0%	0	0%
Total:	0	0	0	0	5									5	100%	10	100%
Controllable Non-Issued Violations																	
Framing of Plate	0	0	0	0	0									0	0%	0	0
Focus / Clarity of Plate	0	0	0	0	0									0	0%	0	0
Dark Interior	0	0	0	0	0									0	0%	0	0
Framing of Driver	0	0	0	0	0									0	0%	0	0
Focus / Clarity of Driver	0	0	0	0	0									0	0%	0	0
Framing of Car	0	0	0	0	0									0	0%	0	0
Operator / Data Error	0	0	0	0	0									0	0%	0	0
Exposure	0	0	0	0	4									4	100%	0	0
Equipment Malfunction	0	0	0	0	0									0	0%	0	0
Xerox Expired	0	0	0	0	0									0	0%	0	0
Total:	0	0	0	0	4									4	100%	0	0%
Summary Metrics													Year to Date Average		2013 Average		
Daily Ave Vehicle Passes	0	0	0	0	11,254									11,254		9,811	
Ave Issued Speed	0	0	0	0	39									39		31	
Ave Issued Red Seconds	0	0	0	0	0.4									0		0.8	
Citation / Violation Iss Rate	0%	0%	0%	0%	50%									50%		72%	
Controllable Iss Rate	0%	0%	0%	0%	69%									69%		100%	



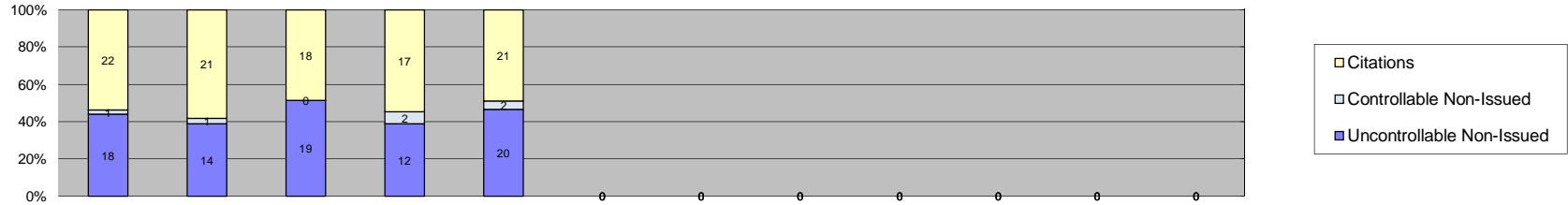
**City of West Hollywood
Approach Summary Report
Location 3121: N/B Crescent Heights @ Fountain (GLD-4 Camera System)**



Events	Jan-14	Feb-14	Mar-14	Apr-14	May-14	Jun-14	Jul-14	Aug-14	Sep-14	Oct-14	Nov-14	Dec-14	Year to Date Average		2013 Average		
													Quantity	%	Quantity	%	
Non-Violations	28	16	19	27	19									22	36%	21	35%
Violations	39	34	34	37	47									38	64%	38	65%
Total:	67	50	53	64	66									60	100%	59	100%
Violations																	
Uncontrollable Non-Issued	17	14	19	17	22									18	47%	16	40%
Controllable Non-Issued	0	0	0	0	0									0	0%	3	7%
Citations	22	20	15	20	25									20	53%	22	53%
Total:	39	34	34	37	47									38	100%	41	100%
Non-Violations																	
Rear Axle Violation	0	0	0	0	0									0	0%	0	0%
Emergency Vehicle	0	0	2	3	0									3	11%	3	15%
Right Turn	13	3	9	12	9									9	39%	7	32%
No Violation Occurred	15	13	8	12	10									12	50%	11	53%
Total:	28	16	19	27	19									23	100%	21	100%
Uncontrollable Non-Issued Violations																	
No Plate	6	5	9	10	9									8	30%	8	33%
Out of State Plate	2	3	3	1	0									2	9%	1	4%
Glare on Plate	0	1	0	2	2									2	6%	2	9%
Illegible Plate	2	0	0	0	1									2	6%	1	4%
Plate Obstructed	0	1	0	0	0									1	4%	1	4%
Windshield Glare	0	2	1	3	6									3	12%	3	11%
Driver Obstructed	0	0	0	0	0									0	0%	0	0%
Car Obstructed	0	1	0	0	0									1	4%	2	7%
No DMV Match Found	4	0	4	0	2									3	13%	5	20%
LASD Expired	3	0	0	0	0									3	12%	0	0%
LASD Return	0	1	2	1	2									2	6%	1	6%
Yellow Interval Not Met	0	0	0	0	0									0	0%	0	0%
Other	0	0	0	0	0									0	0%	0	0%
Total:	17	14	19	17	22									26	100%	23	100%
Controllable Non-Issued Violations																	
Framing of Plate	0	0	0	0	0									0	0	0	0%
Focus / Clarity of Plate	0	0	0	0	0									0	0	0	0%
Dark Interior	0	0	0	0	0									0	0	0	0%
Framing of Driver	0	0	0	0	0									0	0	0	0%
Focus / Clarity of Driver	0	0	0	0	0									0	0	0	0%
Framing of Car	0	0	0	0	0									0	0	0	0%
Operator / Data Error	0	0	0	0	0									0	0	0	0%
Exposure	0	0	0	0	0									0	0	0	0%
Equipment Malfunction	0	0	0	0	0									0	0	0	0%
Xerox Expired	0	0	0	0	0									0	0	3	100%
Total:	0	0	0	0	0									0	0%	3	100%
Summary Metrics													Year to Date Average		2013 Average		
Daily Ave Vehicle Passes	9,537	7,344	10,079	7,448	10,814									9,045		11,309	
Ave Issued Speed	39	34	38	40	36									37		37	
Ave Issued Red Seconds	2.0	1.9	5.7	0.7	0.4									2		2	
Citation / Violation Iss Rate	56%	59%	44%	54%	53%									53%		56%	
Controllable Iss Rate	100%	100%	100%	100%	100%									100%		98%	



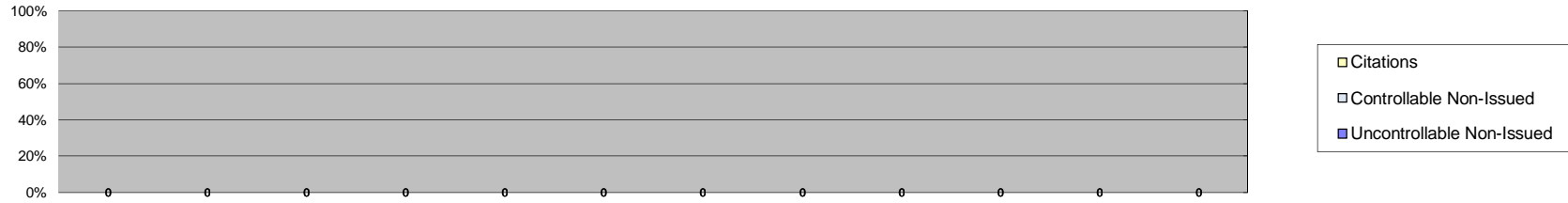
**City of West Hollywood
Approach Summary Report
Location 3122: S/B Crescent Heights @ Fountain (GLD-4 Camera System)**



Events	Jan-14	Feb-14	Mar-14	Apr-14	May-14	Jun-14	Jul-14	Aug-14	Sep-14	Oct-14	Nov-14	Dec-14	Year to Date Average		2013 Average		
													Quantity	%	Quantity	%	
Non-Violations	27	21	19	32	28									25	40%	24	39%
Violations	41	36	37	31	43									38	60%	38	61%
Total:	68	57	56	63	71									63	100%	63	100%
Violations																	
Uncontrollable Non-Issued	18	14	19	12	20									17	44%	17	43%
Controllable Non-Issued	1	1	0	2	2									2	4%	3	9%
Citations	22	21	18	17	21									20	52%	19	48%
Total:	41	36	37	31	43									38	100%	39	100%
Non-Violations																	
Rear Axle Violation	0	0	0	0	0									0	0%	1	4%
Emergency Vehicle	3	2	2	3	2									2	9%	2	7%
Right Turn	19	14	9	18	14									15	58%	12	48%
No Violation Occurred	5	5	8	11	12									8	32%	10	41%
Total:	27	21	19	32	28									25	100%	25	100%
Uncontrollable Non-Issued Violations																	
No Plate	2	7	9	10	11									8	33%	8	28%
Out of State Plate	3	2	4	0	1									3	11%	1	4%
Glare on Plate	0	0	0	0	0									0	0%	1	4%
Illegible Plate	0	1	1	0	1									1	4%	1	4%
Plate Obstructed	0	0	0	0	0									0	0%	2	5%
Windshield Glare	1	0	0	0	2									2	6%	4	14%
Driver Obstructed	1	0	1	0	0									1	4%	2	5%
Car Obstructed	0	0	0	0	0									0	0%	3	11%
No DMV Match Found	6	4	4	2	2									4	15%	4	14%
LASD Expired	4	0	0	0	0									4	17%	1	4%
LASD Return	1	0	0	0	3									2	9%	1	4%
Yellow Interval Not Met	0	0	0	0	0									0	0%	0	0%
Other	0	0	0	0	0									0	0%	1	4%
Total:	18	14	19	12	20									23	100%	27	100%
Controllable Non-Issued Violations																	
Framing of Plate	0	0	0	0	0									0	0%	0	0%
Focus / Clarity of Plate	0	0	0	0	0									0	0%	0	0%
Dark Interior	1	1	0	1	1									1	50%	2	26%
Framing of Driver	0	0	0	0	0									0	0%	0	0%
Focus / Clarity of Driver	0	0	0	0	0									0	0%	0	0%
Framing of Car	0	0	0	0	0									0	0%	0	0%
Operator / Data Error	0	0	0	0	0									0	0%	0	0%
Exposure	0	0	0	0	0									0	0%	1	12%
Equipment Malfunction	0	0	0	1	1									1	50%	2	27%
Xerox Expired	0	0	0	0	0									0	0%	3	36%
Total:	1	1	0	2	2									2	100%	8	100%
Summary Metrics													Year to Date Average		2013 Average		
Daily Ave Vehicle Passes	10,175	8,052	10,781	8,489	10,075									9,514		12,105	
Ave Issued Speed	37	36	37	36	38									37		36	
Ave Issued Red Seconds	3.0	0.5	4.0	0.4	0.4									2		0.7	
Citation / Violation Iss Rate	54%	58%	49%	55%	49%									53%		49%	
Controllable Iss Rate	96%	95%	100%	89%	91%									94%		86%	



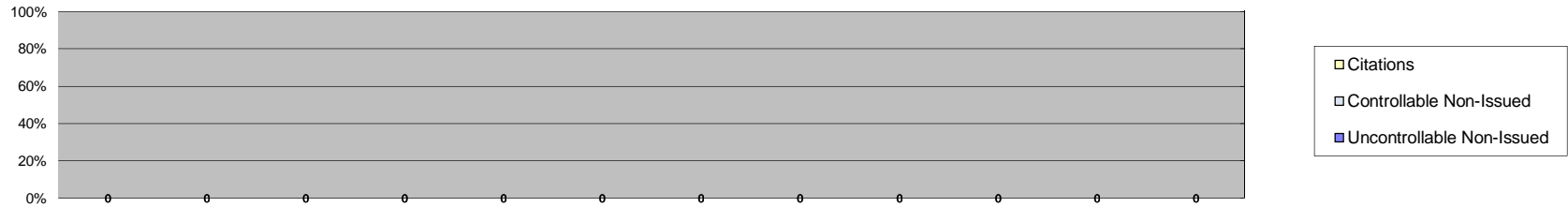
**City of West Hollywood
Approach Summary Report
Location 3123: E/B Fountain @ Crescent Heights (GLD-4 Camera System)**



Events	Jan-14	Feb-14	Mar-14	Apr-14	May-14	Jun-14	Jul-14	Aug-14	Sep-14	Oct-14	Nov-14	Dec-14	Year to Date Average		2013 Average		
													Quantity	%	Quantity	%	
Non-Violations	0	0	0	0	0									0	0	25	58%
Violations	0	0	0	0	0									0	0	18	42%
Total:	0	0	0	0	0									0	0%	43	100%
Violations																	
Uncontrollable Non-Issued	0	0	0	0	0									0	0	7	35%
Controllable Non-Issued	0	0	0	0	0									0	0	1	5%
Citations	0	0	0	0	0									0	0	11	59%
Total:	0	0	0	0	0									0	0%	19	100%
Non-Violations																	
Rear Axle Violation	0	0	0	0	0									0	0	0	0%
Emergency Vehicle	0	0	0	0	0									0	0	1	4%
Right Turn	0	0	0	0	0									0	0	16	64%
No Violation Occurred	0	0	0	0	0									0	0	8	32%
Total:	0	0	0	0	0									0	0%	25	100%
Uncontrollable Non-Issued Violations																	
No Plate	0	0	0	0	0									0	0	3	43%
Out of State Plate	0	0	0	0	0									0	0	0	0%
Glare on Plate	0	0	0	0	0									0	0	0	0%
Illegible Plate	0	0	0	0	0									0	0	0	0%
Plate Obstructed	0	0	0	0	0									0	0	0	0%
Windshield Glare	0	0	0	0	0									0	0	2	21%
Driver Obstructed	0	0	0	0	0									0	0	0	0%
Car Obstructed	0	0	0	0	0									0	0	1	14%
No DMV Match Found	0	0	0	0	0									0	0	2	21%
LASD Expired	0	0	0	0	0									0	0	0	0%
LASD Return	0	0	0	0	0									0	0	0	0%
Yellow Interval Not Met	0	0	0	0	0									0	0	0	0%
Other	0	0	0	0	0									0	0	0	0%
Total:	0	0	0	0	0									0	0%	7	100%
Controllable Non-Issued Violations																	
Framing of Plate	0	0	0	0	0									0	0	0	0%
Focus / Clarity of Plate	0	0	0	0	0									0	0	0	0%
Dark Interior	0	0	0	0	0									0	0	1	100%
Framing of Driver	0	0	0	0	0									0	0	0	0%
Focus / Clarity of Driver	0	0	0	0	0									0	0	0	0%
Framing of Car	0	0	0	0	0									0	0	0	0%
Operator / Data Error	0	0	0	0	0									0	0	0	0%
Exposure	0	0	0	0	0									0	0	0	0%
Equipment Malfunction	0	0	0	0	0									0	0	0	0%
Xerox Expired	0	0	0	0	0									0	0	0	0%
Total:	0	0	0	0	0									0	0%	1	100%
Summary Metrics																	
Daily Ave Vehicle Passes	0	0	0	0	0									0		8,956	
Ave Issued Speed	0	0	0	0	0									0		34	
Ave Issued Red Seconds	0	0	0	0	0									0		0.5	
Citation / Violation Iss Rate	0%	0%	0%	0%	0%									0%		60%	
Controllable Iss Rate	0%	0%	0%	0%	0%									0%		94%	



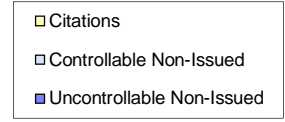
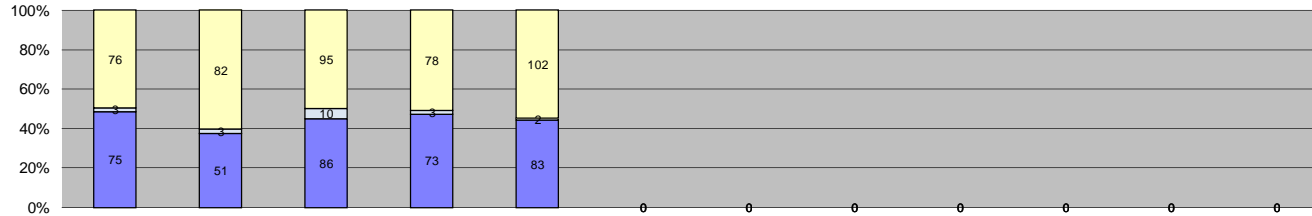
**City of West Hollywood
Approach Summary Report
Location 3124: W/B Fountain @ Crescent Heights (GLD-4 Camera System)**



Events	Jan-14	Feb-14	Mar-14	Apr-14	May-14	Jun-14	Jul-14	Aug-14	Sep-14	Oct-14	Nov-14	Dec-14	Year to Date Average		2013 Average		
													Quantity	%	Quantity	%	
Non-Violations	0	0	0	0	0									0	0	10	58%
Violations	0	0	0	0	0									0	0	7	42%
Total:	0	0	0	0	0									0	0%	17	100%
Violations																	
Uncontrollable Non-Issued	0	0	0	0	0									0	0	4	49%
Controllable Non-Issued	0	0	0	0	0									0	0	0	0%
Citations	0	0	0	0	0									0	0	5	51%
Total:	0	0	0	0	0									0	0%	9	100%
Non-Violations																	
Rear Axle Violation	0	0	0	0	0									0	0	0	0%
Emergency Vehicle	0	0	0	0	0									0	0	2	14%
Right Turn	0	0	0	0	0									0	0	6	48%
No Violation Occurred	0	0	0	0	0									0	0	4	38%
Total:	0	0	0	0	0									0	0%	12	100%
Uncontrollable Non-Issued Violations																	
No Plate	0	0	0	0	0									0	0	3	46%
Out of State Plate	0	0	0	0	0									0	0	0	0%
Glare on Plate	0	0	0	0	0									0	0	0	0%
Illegible Plate	0	0	0	0	0									0	0	0	0%
Plate Obstructed	0	0	0	0	0									0	0	0	0%
Windshield Glare	0	0	0	0	0									0	0	1	15%
Driver Obstructed	0	0	0	0	0									0	0	0	0%
Car Obstructed	0	0	0	0	0									0	0	0	0%
No DMV Match Found	0	0	0	0	0									0	0	3	38%
LASD Expired	0	0	0	0	0									0	0	0	0%
LASD Return	0	0	0	0	0									0	0	0	0%
Yellow Interval Not Met	0	0	0	0	0									0	0	0	0%
Other	0	0	0	0	0									0	0	0	0%
Total:	0	0	0	0	0									0	0%	7	100%
Controllable Non-Issued Violations																	
Framing of Plate	0	0	0	0	0									0	0	0	0
Focus / Clarity of Plate	0	0	0	0	0									0	0	0	0
Dark Interior	0	0	0	0	0									0	0	0	0
Framing of Driver	0	0	0	0	0									0	0	0	0
Focus / Clarity of Driver	0	0	0	0	0									0	0	0	0
Framing of Car	0	0	0	0	0									0	0	0	0
Operator / Data Error	0	0	0	0	0									0	0	0	0
Exposure	0	0	0	0	0									0	0	0	0
Equipment Malfunction	0	0	0	0	0									0	0	0	0
Xerox Expired	0	0	0	0	0									0	0	0	0
Total:	0	0	0	0	0									0	0%	0	0%
Summary Metrics																	
Daily Ave Vehicle Passes	0	0	0	0	0									0		8,614	
Ave Issued Speed	0	0	0	0	0									0		38	
Ave Issued Red Seconds	0	0	0	0	0									0		0.7	
Citation / Violation Iss Rate	0%	0%	0%	0%	0%									0%		44%	
Controllable Iss Rate	0%	0%	0%	0%	0%									0%		100%	



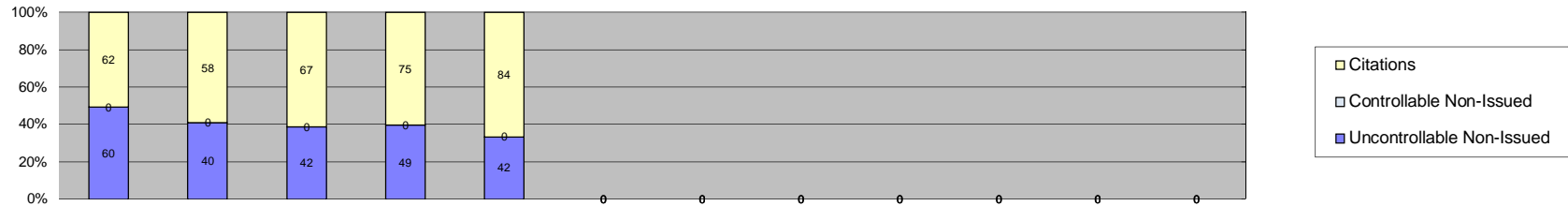
**City of West Hollywood
Approach Summary Report
Location 3131: N/B La Cienega @ Melrose (GLD-4 Camera System)**



Events	Jan-14	Feb-14	Mar-14	Apr-14	May-14	Jun-14	Jul-14	Aug-14	Sep-14	Oct-14	Nov-14	Dec-14	Year to Date Average		2013 Average		
													Quantity	%	Quantity	%	
Non-Violations	28	23	15	25	29									24	13%	28	15%
Violations	154	136	191	154	187									164	87%	157	85%
Total:	182	159	206	179	216									188	100%	185	100%
Violations																	
Uncontrollable Non-Issued	75	51	86	73	83									74	45%	62	39%
Controllable Non-Issued	3	3	10	3	2									4	3%	4	3%
Citations	76	82	95	78	102									87	53%	91	58%
Total:	154	136	191	154	187									164	100%	158	100%
Non-Violations																	
Rear Axle Violation	0	0	0	0	1									1	4%	1	3%
Emergency Vehicle	4	2	2	2	5									3	12%	4	13%
Right Turn	13	8	6	14	12									11	43%	12	42%
No Violation Occurred	11	13	7	9	11									10	41%	12	42%
Total:	28	23	15	25	29									25	100%	29	100%
Uncontrollable Non-Issued Violations																	
No Plate	29	24	44	37	42									35	39%	32	46%
Out of State Plate	7	9	12	13	8									10	11%	2	2%
Glare on Plate	0	0	0	0	1									1	1%	1	1%
Illegible Plate	0	0	0	0	1									1	1%	1	1%
Plate Obstructed	0	2	1	1	0									1	1%	1	2%
Windshield Glare	9	4	9	10	10									8	9%	8	11%
Driver Obstructed	1	0	1	1	3									2	2%	2	2%
Car Obstructed	2	0	0	0	1									2	2%	2	3%
No DMV Match Found	10	9	12	7	15									11	12%	15	20%
LASD Expired	16	0	0	0	0									16	18%	4	6%
LASD Return	1	3	7	4	2									3	4%	3	4%
Yellow Interval Not Met	0	0	0	0	0									0	0%	0	0%
Other	0	0	0	0	0									0	0%	1	2%
Total:	75	51	86	73	83									90	100%	71	100%
Controllable Non-Issued Violations																	
Framing of Plate	0	0	0	0	0									0	0%	0	0%
Focus / Clarity of Plate	0	0	0	0	0									0	0%	0	0%
Dark Interior	2	3	9	3	2									4	66%	3	22%
Framing of Driver	0	0	0	0	0									0	0%	0	0%
Focus / Clarity of Driver	1	0	0	0	0									1	17%	1	7%
Framing of Car	0	0	0	0	0									0	0%	0	0%
Operator / Data Error	0	0	0	0	0									0	0%	0	0%
Exposure	0	0	0	0	0									0	0%	2	10%
Equipment Malfunction	0	0	0	0	0									0	0%	0	0%
Xerox Expired	0	0	1	0	0									1	17%	9	61%
Total:	3	3	10	3	2									6	100%	15	100%
Summary Metrics													Year to Date Average		2013 Average		
Daily Ave Vehicle Passes	12,899	11,270	13,301	12,993	13,258									12,744		13,131	
Ave Issued Speed	38	37	38	38	38									38		38	
Ave Issued Red Seconds	0.4	0.4	0.4	0.4	0.6									0		0.9	
Citation / Violation Iss Rate	49%	60%	50%	51%	55%									53%		58%	
Controllable Iss Rate	96%	96%	90%	96%	98%									96%		96%	



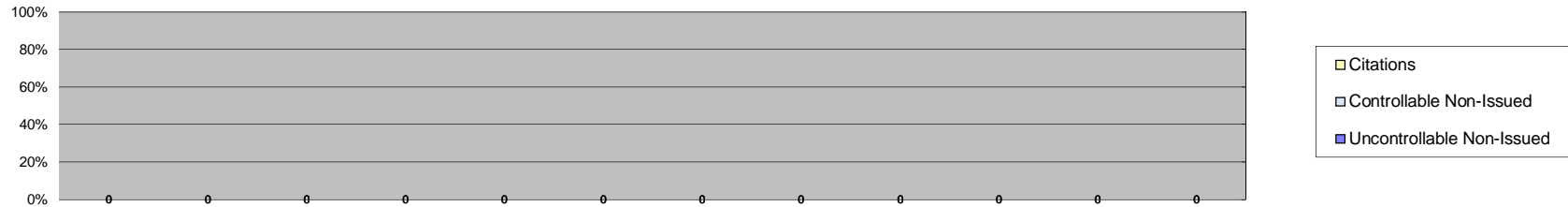
**City of West Hollywood
Approach Summary Report
Location 3132: S/B La Cienega @ Melrose (GLD-4 Camera System)**



Events	Jan-14	Feb-14	Mar-14	Apr-14	May-14	Jun-14	Jul-14	Aug-14	Sep-14	Oct-14	Nov-14	Dec-14	Year to Date Average		2013 Average		
													Quantity	%	Quantity	%	
Non-Violations	106	112	108	105	104									107	48%	98	47%
Violations	122	98	109	124	126									116	52%	110	53%
Total:	228	210	217	229	230									223	100%	208	100%
Violations																	
Uncontrollable Non-Issued	60	40	42	49	42									47	40%	42	38%
Controllable Non-Issued	0	0	0	0	0									0	0%	4	3%
Citations	62	58	67	75	84									69	60%	65	59%
Total:	122	98	109	124	126									116	100%	111	100%
Non-Violations																	
Rear Axle Violation	0	0	0	0	0									0	0%	1	1%
Emergency Vehicle	12	10	12	12	10									11	10%	9	10%
Right Turn	78	86	83	84	82									83	77%	75	76%
No Violation Occurred	16	16	13	9	12									13	12%	14	14%
Total:	106	112	108	105	104									107	100%	99	100%
Uncontrollable Non-Issued Violations																	
No Plate	35	19	21	27	20									24	42%	23	48%
Out of State Plate	4	2	5	6	7									5	8%	1	3%
Glare on Plate	0	0	0	1	0									1	2%	1	2%
Illegible Plate	4	1	1	0	1									2	3%	1	3%
Plate Obstructed	0	3	1	1	3									2	3%	1	3%
Windshield Glare	0	0	0	3	2									3	4%	4	8%
Driver Obstructed	0	1	1	1	0									1	2%	1	2%
Car Obstructed	0	0	0	0	1									1	2%	2	3%
No DMV Match Found	7	13	9	8	7									9	15%	10	20%
LASD Expired	8	0	0	0	0									8	14%	2	3%
LASD Return	2	1	4	2	0									2	4%	1	2%
Yellow Interval Not Met	0	0	0	0	0									0	0%	0	0%
Other	0	0	0	0	1									1	2%	1	2%
Total:	60	40	42	49	42									59	100%	49	100%
Controllable Non-Issued Violations																	
Framing of Plate	0	0	0	0	0									0	0%	0	0%
Focus / Clarity of Plate	0	0	0	0	0									0	0%	1	6%
Dark Interior	0	0	0	0	0									0	0%	2	11%
Framing of Driver	0	0	0	0	0									0	0%	0	0%
Focus / Clarity of Driver	0	0	0	0	0									0	0%	1	6%
Framing of Car	0	0	0	0	0									0	0%	0	0%
Operator / Data Error	0	0	0	0	0									0	0%	7	42%
Exposure	0	0	0	0	0									0	0%	1	6%
Equipment Malfunction	0	0	0	0	0									0	0%	1	6%
Xerox Expired	0	0	0	0	0									0	0%	4	24%
Total:	0	0	0	0	0									0	0%	17	100%
Summary Metrics													Year to Date Average		2013 Average		
Daily Ave Vehicle Passes	11,157	10,202	11,788	10,748	11,104									11,000		13,376	
Ave Issued Speed	40	40	39	38	38									39		39	
Ave Issued Red Seconds	0.3	0.4	0.4	0.5	0.5									0		0.5	
Citation / Violation Iss Rate	51%	59%	61%	60%	67%									60%		60%	
Controllable Iss Rate	100%	100%	100%	100%	100%									100%		96%	



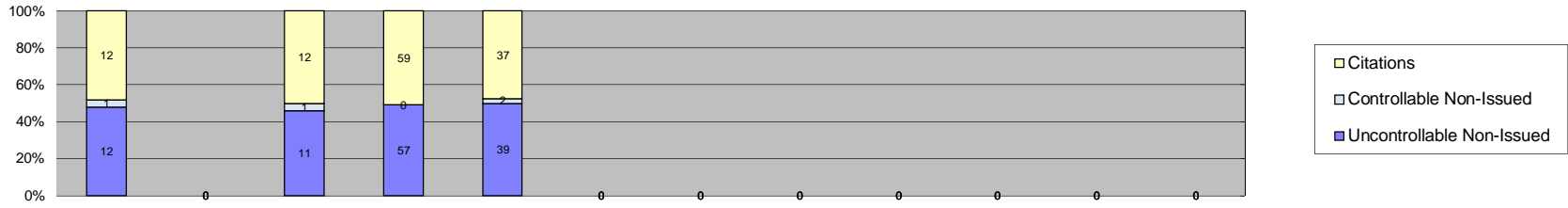
**City of West Hollywood
Approach Summary Report
Location 3133: E/B Melrose @ La Cienega (GLD-4 Camera System)**



Events	Jan-14	Feb-14	Mar-14	Apr-14	May-14	Jun-14	Jul-14	Aug-14	Sep-14	Oct-14	Nov-14	Dec-14	Year to Date Average		2013 Average		
													Quantity	%	Quantity	%	
Non-Violations	0	0	0	0	0									0	0	20	43%
Violations	0	0	0	0	0									0	0	26	57%
Total:	0	0	0	0	0									0	0%	46	100%
Violations																	
Uncontrollable Non-Issued	0	0	0	0	0									0	0	18	69%
Controllable Non-Issued	0	0	0	0	0									0	0	1	4%
Citations	0	0	0	0	0									0	0	7	27%
Total:	0	0	0	0	0									0	0%	26	100%
Non-Violations																	
Rear Axle Violation	0	0	0	0	0									0	0	0	0%
Emergency Vehicle	0	0	0	0	0									0	0	1	5%
Right Turn	0	0	0	0	0									0	0	8	40%
No Violation Occurred	0	0	0	0	0									0	0	11	55%
Total:	0	0	0	0	0									0	0%	20	100%
Uncontrollable Non-Issued Violations																	
No Plate	0	0	0	0	0									0	0	10	56%
Out of State Plate	0	0	0	0	0									0	0	0	0%
Glare on Plate	0	0	0	0	0									0	0	0	0%
Illegible Plate	0	0	0	0	0									0	0	5	28%
Plate Obstructed	0	0	0	0	0									0	0	0	0%
Windshield Glare	0	0	0	0	0									0	0	0	0%
Driver Obstructed	0	0	0	0	0									0	0	0	0%
Car Obstructed	0	0	0	0	0									0	0	1	6%
No DMV Match Found	0	0	0	0	0									0	0	1	6%
LASD Expired	0	0	0	0	0									0	0	1	6%
LASD Return	0	0	0	0	0									0	0	0	0%
Yellow Interval Not Met	0	0	0	0	0									0	0	0	0%
Other	0	0	0	0	0									0	0	0	0%
Total:	0	0	0	0	0									0	0%	18	100%
Controllable Non-Issued Violations																	
Framing of Plate	0	0	0	0	0									0	0	0	0%
Focus / Clarity of Plate	0	0	0	0	0									0	0	0	0%
Dark Interior	0	0	0	0	0									0	0	0	0%
Framing of Driver	0	0	0	0	0									0	0	0	0%
Focus / Clarity of Driver	0	0	0	0	0									0	0	0	0%
Framing of Car	0	0	0	0	0									0	0	0	0%
Operator / Data Error	0	0	0	0	0									0	0	0	0%
Exposure	0	0	0	0	0									0	0	0	0%
Equipment Malfunction	0	0	0	0	0									0	0	1	100%
Xerox Expired	0	0	0	0	0									0	0	0	0%
Total:	0	0	0	0	0									0	0%	1	100%
Summary Metrics																	
Daily Ave Vehicle Passes	0	0	0	0	0									0		9,584	
Ave Issued Speed	0	0	0	0	0									0		34	
Ave Issued Red Seconds	0	0	0	0	0									0		0.6	
Citation / Violation Iss Rate	0%	0%	0%	0%	0%									0%		27%	
Controllable Iss Rate	0%	0%	0%	0%	0%									0%		88%	



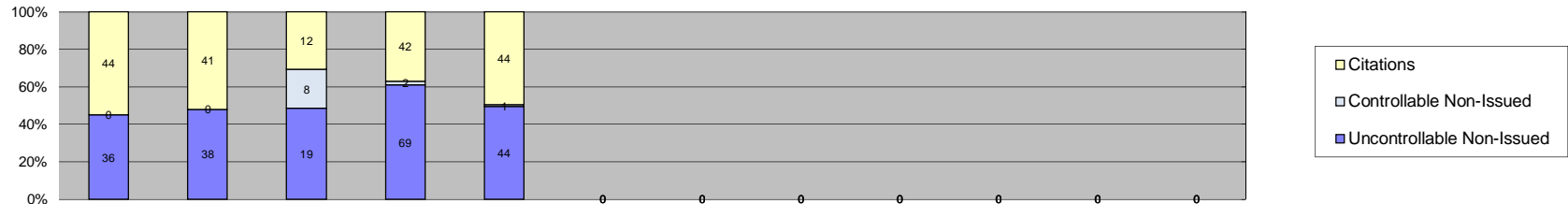
**City of West Hollywood
Approach Summary Report
Location 3141: N/B La Brea @ Fountain (GLD-4 Camera System)**



Events	Jan-14	Feb-14	Mar-14	Apr-14	May-14	Jun-14	Jul-14	Aug-14	Sep-14	Oct-14	Nov-14	Dec-14	Year to Date Average		2013 Average		
													Quantity	%	Quantity	%	
Non-Violations	75	0	73	325	274									187	75%	349	76%
Violations	25	0	24	116	78									61	25%	113	24%
Total:	100	0	97	441	352									248	100%	462	100%
Violations																	
Uncontrollable Non-Issued	12	0	11	57	39									30	49%	55	47%
Controllable Non-Issued	1	0	1	0	2									1	2%	4	4%
Citations	12	0	12	59	37									30	49%	57	49%
Total:	25	0	24	116	78									61	100%	115	100%
Non-Violations																	
Rear Axle Violation	0	0	0	1	1									1	1%	2	0%
Emergency Vehicle	1	0	0	8	2									4	2%	7	2%
Right Turn	32	0	46	215	186									120	64%	128	36%
No Violation Occurred	42	0	27	101	85									64	34%	214	61%
Total:	75	0	73	325	274									188	100%	350	100%
Uncontrollable Non-Issued Violations																	
No Plate	4	0	5	26	17									13	36%	25	38%
Out of State Plate	0	0	2	8	6									5	15%	2	3%
Glare on Plate	0	0	0	0	1									1	3%	1	2%
Illegible Plate	0	0	0	0	0									0	0%	1	2%
Plate Obstructed	0	0	0	0	0									0	0%	2	2%
Windshield Glare	3	0	2	15	7									7	19%	13	20%
Driver Obstructed	0	0	1	0	0									1	3%	2	2%
Car Obstructed	0	0	0	0	0									0	0%	2	3%
No DMV Match Found	3	0	0	4	7									5	13%	12	18%
LASD Expired	1	0	0	0	0									1	3%	4	6%
LASD Return	1	0	1	4	0									2	6%	2	2%
Yellow Interval Not Met	0	0	0	0	0									0	0%	0	0%
Other	0	0	0	0	1									1	3%	1	2%
Total:	12	0	11	57	39									36	100%	64	100%
Controllable Non-Issued Violations																	
Framing of Plate	0	0	0	0	0									0	0%	0	0%
Focus / Clarity of Plate	0	0	0	0	0									0	0%	0	0%
Dark Interior	0	0	0	0	0									0	0%	2	11%
Framing of Driver	0	0	0	0	0									0	0%	0	0%
Focus / Clarity of Driver	0	0	0	0	0									0	0%	1	7%
Framing of Car	0	0	0	0	0									0	0%	0	0%
Operator / Data Error	0	0	0	0	0									0	0%	0	0%
Exposure	0	0	1	0	1									1	50%	0	0%
Equipment Malfunction	1	0	0	0	1									1	50%	10	68%
Xerox Expired	0	0	0	0	0									0	0%	2	14%
Total:	1	0	1	0	2									2	100%	15	100%
Summary Metrics																	
Daily Ave Vehicle Passes	13,259	0	17,272	15,055	14,047									14,908		15,469	
Ave Issued Speed	32	0	25	32	32									30		31	
Ave Issued Red Seconds	0.5	0	0.6	0.5	0.5									1		0.6	
Citation / Violation Iss Rate	48%	0%	50%	51%	47%									49%		50%	
Controllable Iss Rate	92%	0%	92%	100%	95%									95%		97%	



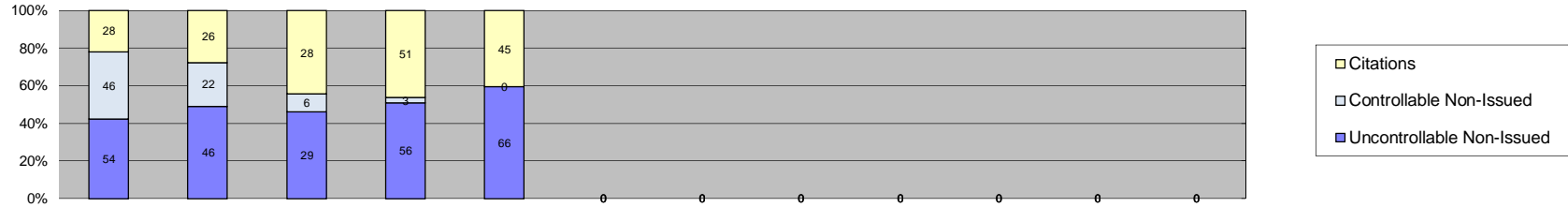
**City of West Hollywood
Approach Summary Report
Location 3142: S/B La Brea @ Fountain (GLD-4 Camera System)**



Events	Jan-14	Feb-14	Mar-14	Apr-14	May-14	Jun-14	Jul-14	Aug-14	Sep-14	Oct-14	Nov-14	Dec-14	Year to Date Average		2013 Average		
													Quantity	%	Quantity	%	
Non-Violations	537	465	280	694	573									510	86%	530	85%
Violations	80	79	39	113	89									80	14%	95	15%
Total:	617	544	319	807	662									590	100%	625	100%
Violations																	
Uncontrollable Non-Issued	36	38	19	69	44									41	51%	46	48%
Controllable Non-Issued	0	0	8	2	1									4	5%	2	3%
Citations	44	41	12	42	44									37	45%	48	50%
Total:	80	79	39	113	89									81	100%	96	100%
Non-Violations																	
Rear Axle Violation	1	0	2	0	1									1	0%	2	0%
Emergency Vehicle	14	3	7	8	9									8	2%	11	2%
Right Turn	376	351	209	543	444									385	75%	289	54%
No Violation Occurred	146	111	62	143	119									116	23%	228	43%
Total:	537	465	280	694	573									510	100%	531	100%
Uncontrollable Non-Issued Violations																	
No Plate	15	19	10	38	23									21	39%	18	22%
Out of State Plate	1	6	1	7	5									4	7%	2	2%
Glare on Plate	0	0	0	0	0									0	0%	1	1%
Illegible Plate	2	0	0	0	0									2	4%	1	2%
Plate Obstructed	0	0	0	1	1									1	2%	1	2%
Windshield Glare	0	1	2	2	6									3	5%	8	10%
Driver Obstructed	1	0	0	1	1									1	2%	2	2%
Car Obstructed	1	0	0	2	1									1	2%	2	2%
No DMV Match Found	4	8	5	12	4									7	12%	9	10%
LASD Expired	11	0	0	0	0									11	20%	3	3%
LASD Return	1	4	1	6	3									3	6%	3	3%
Yellow Interval Not Met	0	0	0	0	0									0	0%	0	0%
Other	0	0	0	0	0									0	0%	35	41%
Total:	36	38	19	69	44									54	100%	84	100%
Controllable Non-Issued Violations																	
Framing of Plate	0	0	0	0	0									0	0%	1	12%
Focus / Clarity of Plate	0	0	0	0	0									0	0%	0	0%
Dark Interior	0	0	0	0	1									1	17%	2	27%
Framing of Driver	0	0	0	0	0									0	0%	0	0%
Focus / Clarity of Driver	0	0	0	0	0									0	0%	1	12%
Framing of Car	0	0	0	0	0									0	0%	0	0%
Operator / Data Error	0	0	0	0	0									0	0%	2	24%
Exposure	0	0	0	0	0									0	0%	1	12%
Equipment Malfunction	0	0	8	2	0									5	83%	0	0%
Xerox Expired	0	0	0	0	0									0	0%	1	12%
Total:	0	0	8	2	1									6	100%	8	100%
Summary Metrics																	
Daily Ave Vehicle Passes	11,157	10,200	11,824	10,748	11,315									11,049		16,540	
Ave Issued Speed	36	34	31	32	35									34		33	
Ave Issued Red Seconds	0.7	1.0	0.6	0.6	0.8									1		0.7	
Citation / Violation Iss Rate	55%	52%	31%	37%	49%									45%		51%	
Controllable Iss Rate	100%	100%	60%	95%	98%									91%		97%	



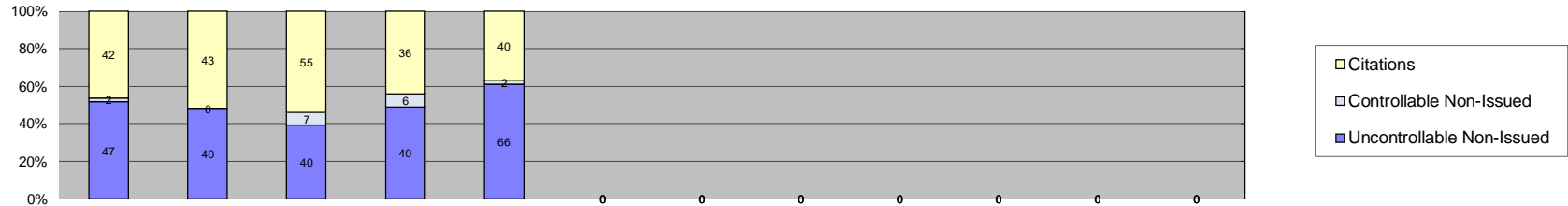
**City of West Hollywood
Approach Summary Report
Location 3143: E/B Sunset @ La Cienega (GLD-4 Camera System)**



Events	Jan-14	Feb-14	Mar-14	Apr-14	May-14	Jun-14	Jul-14	Aug-14	Sep-14	Oct-14	Nov-14	Dec-14	Year to Date Average		2013 Average		
													Quantity	%	Quantity	%	
Non-Violations	576	534	368	589	600									533	84%	696	85%
Violations	128	94	63	110	111									101	16%	119	15%
Total:	704	628	431	699	711									635	100%	815	100%
Violations																	
Uncontrollable Non-Issued	54	46	29	56	66									50	48%	65	54%
Controllable Non-Issued	46	22	6	3	0									19	18%	2	2%
Citations	28	26	28	51	45									36	34%	53	44%
Total:	128	94	63	110	111									105	100%	119	100%
Non-Violations																	
Rear Axle Violation	1	1	0	3	1									2	0%	1	0%
Emergency Vehicle	6	2	3	7	6									5	1%	6	1%
Right Turn	317	316	216	410	403									332	62%	368	53%
No Violation Occurred	252	215	149	169	190									195	37%	322	46%
Total:	576	534	368	589	600									534	100%	697	100%
Uncontrollable Non-Issued Violations																	
No Plate	18	24	11	24	23									20	34%	27	38%
Out of State Plate	1	1	1	2	4									2	3%	1	2%
Glare on Plate	0	1	0	2	3									2	3%	0	0%
Illegible Plate	1	0	0	2	1									1	2%	2	3%
Plate Obstructed	1	2	0	0	0									2	3%	2	3%
Windshield Glare	12	6	7	18	16									12	20%	18	25%
Driver Obstructed	0	1	0	0	2									2	3%	2	2%
Car Obstructed	1	0	0	0	4									3	4%	3	4%
No DMV Match Found	9	7	5	7	5									7	11%	9	13%
LASD Expired	4	0	0	0	0									4	7%	4	6%
LASD Return	7	4	5	1	8									5	9%	4	5%
Yellow Interval Not Met	0	0	0	0	0									0	0%	0	0%
Other	0	0	0	0	0									0	0%	0	0%
Total:	54	46	29	56	66									58	100%	71	100%
Controllable Non-Issued Violations																	
Framing of Plate	0	0	0	0	0									0	0%	0	0%
Focus / Clarity of Plate	0	0	0	0	0									0	0%	0	0%
Dark Interior	1	0	2	0	0									2	7%	2	24%
Framing of Driver	0	0	0	0	0									0	0%	0	0%
Focus / Clarity of Driver	0	0	0	0	0									0	0%	1	15%
Framing of Car	0	0	0	0	0									0	0%	0	0%
Operator / Data Error	3	0	1	0	0									2	9%	0	0%
Exposure	0	0	0	1	0									1	5%	2	30%
Equipment Malfunction	42	22	3	2	0									17	79%	0	0%
Xerox Expired	0	0	0	0	0									0	0%	2	30%
Total:	46	22	6	3	0									22	100%	7	100%
Summary Metrics																	
Daily Ave Vehicle Passes	16,176	15,045	16,849	16,333	16,523									16,185		18,620	
Ave Issued Speed	30	29	29	29	27									29		28	
Ave Issued Red Seconds	1.0	0.8	0.8	1.1	0.9									1		1.5	
Citation / Violation Iss Rate	22%	28%	44%	46%	41%									36%		45%	
Controllable Iss Rate	38%	54%	82%	94%	100%									74%		97%	



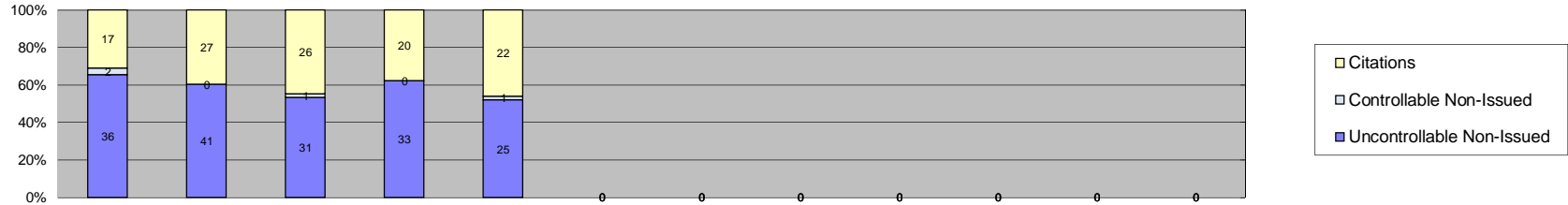
**City of West Hollywood
Approach Summary Report
Location 3144: W/B Sunset @ La Cienega (GLD-4 Camera System)**



Events	Jan-14	Feb-14	Mar-14	Apr-14	May-14	Jun-14	Jul-14	Aug-14	Sep-14	Oct-14	Nov-14	Dec-14	Year to Date Average		2013 Average		
													Quantity	%	Quantity	%	
Non-Violations	39	28	27	29	51									35	27%	34	24%
Violations	91	83	102	82	108									93	73%	109	76%
Total:	130	111	129	111	159									128	100%	142	100%
Violations																	
Uncontrollable Non-Issued	47	40	40	40	66									47	50%	51	47%
Controllable Non-Issued	2	0	7	6	2									4	5%	3	2%
Citations	42	43	55	36	40									43	46%	55	51%
Total:	91	83	102	82	108									94	100%	109	100%
Non-Violations																	
Rear Axle Violation	0	1	2	0	3									2	6%	2	5%
Emergency Vehicle	8	6	4	4	8									6	17%	6	16%
Right Turn	7	4	5	9	15									8	22%	10	28%
No Violation Occurred	24	17	16	16	25									20	55%	17	51%
Total:	39	28	27	29	51									36	100%	34	100%
Uncontrollable Non-Issued Violations																	
No Plate	22	14	18	21	21									19	35%	20	35%
Out of State Plate	1	4	3	3	3									3	5%	1	2%
Glare on Plate	0	0	0	1	0									1	2%	1	2%
Illegible Plate	2	4	1	0	2									2	4%	4	7%
Plate Obstructed	2	1	1	1	0									1	2%	2	4%
Windshield Glare	1	2	2	4	28									7	14%	10	17%
Driver Obstructed	0	3	0	1	2									2	4%	1	2%
Car Obstructed	5	4	2	1	5									3	6%	4	7%
No DMV Match Found	6	6	9	6	2									6	11%	8	14%
LASD Expired	7	0	0	0	0									7	13%	3	4%
LASD Return	1	2	4	2	3									2	4%	2	4%
Yellow Interval Not Met	0	0	0	0	0									0	0%	0	0%
Other	0	0	0	0	0									0	0%	1	2%
Total:	47	40	40	40	66									55	100%	57	100%
Controllable Non-Issued Violations																	
Framing of Plate	0	0	1	0	0									1	18%	1	10%
Focus / Clarity of Plate	0	0	0	0	0									0	0%	0	0%
Dark Interior	2	0	6	5	1									4	64%	2	17%
Framing of Driver	0	0	0	0	0									0	0%	0	0%
Focus / Clarity of Driver	0	0	0	0	0									0	0%	1	10%
Framing of Car	0	0	0	1	1									1	18%	1	10%
Operator / Data Error	0	0	0	0	0									0	0%	0	0%
Exposure	0	0	0	0	0									0	0%	0	0%
Equipment Malfunction	0	0	0	0	0									0	0%	0	0%
Xerox Expired	0	0	0	0	0									0	0%	5	52%
Total:	2	0	7	6	2									6	100%	10	100%
Summary Metrics																	
Daily Ave Vehicle Passes	16,114	14,688	16,269	15,518	16,125									15,743		17,809	
Ave Issued Speed	31	32	30	32	31									31		31	
Ave Issued Red Seconds	1.7	0.6	1.5	1.3	1.8									1		1.2	
Citation / Violation Iss Rate	46%	52%	54%	44%	37%									47%		50%	
Controllable Iss Rate	95%	100%	89%	86%	95%									93%		96%	



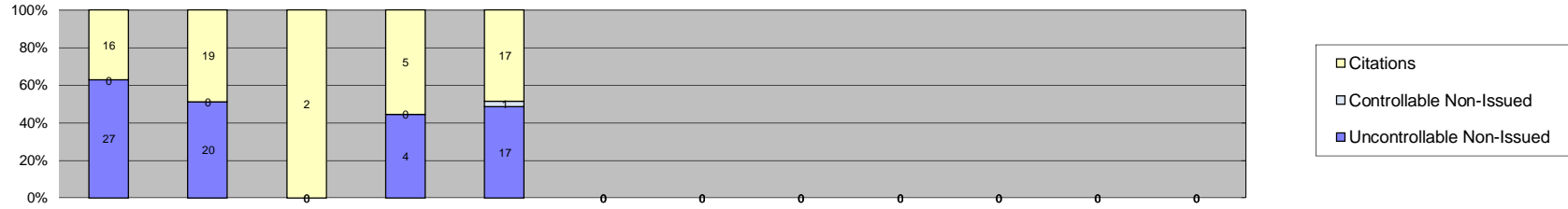
**City of West Hollywood
Approach Summary Report
Location 3151: N/B Fairfax @ Santa Monica (GLD-4 Camera System)**



Events	Jan-14	Feb-14	Mar-14	Apr-14	May-14	Jun-14	Jul-14	Aug-14	Sep-14	Oct-14	Nov-14	Dec-14	Year to Date Average		2013 Average		
													Quantity	%	Quantity	%	
Non-Violations	15	12	9	13	13									12	18%	12	16%
Violations	55	68	58	53	48									56	82%	62	84%
Total:	70	80	67	66	61									69	100%	73	100%
Violations																	
Uncontrollable Non-Issued	36	41	31	33	25									33	58%	35	57%
Controllable Non-Issued	2	0	1	0	1									1	2%	1	2%
Citations	17	27	26	20	22									22	39%	26	41%
Total:	55	68	58	53	48									57	100%	62	100%
Non-Violations																	
Rear Axle Violation	1	2	0	1	2									2	11%	2	12%
Emergency Vehicle	1	0	0	1	1									1	7%	2	14%
Right Turn	0	1	0	0	0									1	7%	1	7%
No Violation Occurred	13	9	9	11	10									10	75%	9	68%
Total:	15	12	9	13	13									14	100%	14	100%
Uncontrollable Non-Issued Violations																	
No Plate	14	12	16	13	8									13	30%	12	28%
Out of State Plate	3	6	4	7	5									5	12%	1	2%
Glare on Plate	0	0	0	0	0									0	0%	2	5%
Illegible Plate	2	2	0	0	1									2	4%	4	9%
Plate Obstructed	2	1	3	0	0									2	5%	2	5%
Windshield Glare	2	5	3	6	2									4	9%	6	13%
Driver Obstructed	0	2	0	0	1									2	4%	1	3%
Car Obstructed	1	3	1	0	3									2	5%	4	10%
No DMV Match Found	6	9	2	3	4									5	11%	6	14%
LASD Expired	6	0	0	0	0									6	14%	3	7%
LASD Return	0	1	2	3	1									2	4%	1	2%
Yellow Interval Not Met	0	0	0	0	0									0	0%	0	0%
Other	0	0	0	1	0									1	2%	1	2%
Total:	36	41	31	33	25									42	100%	42	100%
Controllable Non-Issued Violations																	
Framing of Plate	0	0	0	0	0									0	0%	0	0%
Focus / Clarity of Plate	0	0	0	0	0									0	0%	0	0%
Dark Interior	2	0	1	0	0									2	60%	1	40%
Framing of Driver	0	0	0	0	0									0	0%	0	0%
Focus / Clarity of Driver	0	0	0	0	0									0	0%	0	0%
Framing of Car	0	0	0	0	1									1	40%	0	0%
Operator / Data Error	0	0	0	0	0									0	0%	0	0%
Exposure	0	0	0	0	0									0	0%	0	0%
Equipment Malfunction	0	0	0	0	0									0	0%	1	30%
Xerox Expired	0	0	0	0	0									0	0%	1	30%
Total:	2	0	1	0	1									3	100%	3	100%
Summary Metrics													Year to Date Average		2013 Average		
Daily Ave Vehicle Passes	11,468	10,341	11,975	10,481	11,433									11,140		10,745	
Ave Issued Speed	35	29	31	32	32									32		29	
Ave Issued Red Seconds	0.2	0.4	0.5	0.4	0.4									0		0.7	
Citation / Violation Iss Rate	31%	40%	45%	38%	46%									40%		42%	
Controllable Iss Rate	89%	100%	96%	100%	96%									96%		98%	



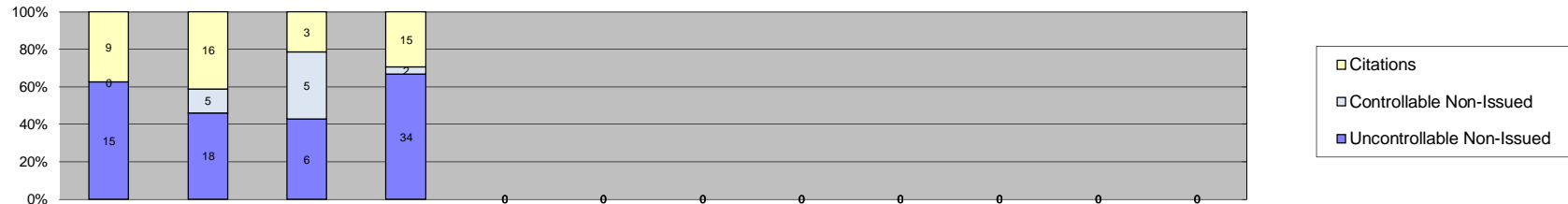
**City of West Hollywood
Approach Summary Report
Location 3152: S/B Fairfax @ Santa Monica (GLD-4 Camera System)**



Events	Jan-14	Feb-14	Mar-14	Apr-14	May-14	Jun-14	Jul-14	Aug-14	Sep-14	Oct-14	Nov-14	Dec-14	Year to Date Average		2013 Average		
													Quantity	%	Quantity	%	
Non-Violations	32	29	2	3	15									16	39%	18	37%
Violations	43	39	2	9	35									26	61%	31	63%
Total:	75	68	4	12	50									42	100%	49	100%
Violations																	
Uncontrollable Non-Issued	27	20	0	4	17									17	57%	17	50%
Controllable Non-Issued	0	0	0	0	1									1	3%	2	6%
Citations	16	19	2	5	17									12	40%	15	44%
Total:	43	39	2	9	35									30	100%	34	100%
Non-Violations																	
Rear Axle Violation	1	1	0	0	1									1	5%	2	10%
Emergency Vehicle	7	10	1	1	1									4	19%	5	24%
Right Turn	11	5	1	2	2									4	20%	4	22%
No Violation Occurred	13	13	0	0	11									12	57%	9	44%
Total:	32	29	2	3	15									22	100%	20	100%
Uncontrollable Non-Issued Violations																	
No Plate	11	12	0	1	9									8	30%	7	29%
Out of State Plate	3	2	0	0	0									3	9%	0	0%
Glare on Plate	0	1	0	0	0									1	4%	4	14%
Illegible Plate	0	0	0	0	0									0	0%	2	9%
Plate Obstructed	0	0	0	0	1									1	4%	2	7%
Windshield Glare	0	0	0	0	2									2	7%	1	5%
Driver Obstructed	0	0	0	0	0									0	0%	1	5%
Car Obstructed	0	0	0	2	1									2	6%	3	10%
No DMV Match Found	6	5	0	1	4									4	15%	4	16%
LASD Expired	6	0	0	0	0									6	22%	0	0%
LASD Return	1	0	0	0	0									1	4%	1	6%
Yellow Interval Not Met	0	0	0	0	0									0	0%	0	0%
Other	0	0	0	0	0									0	0%	0	0%
Total:	27	20	0	4	17									27	100%	25	100%
Controllable Non-Issued Violations																	
Framing of Plate	0	0	0	0	0									0	0%	0	0%
Focus / Clarity of Plate	0	0	0	0	0									0	0%	0	0%
Dark Interior	0	0	0	0	0									0	0%	1	17%
Framing of Driver	0	0	0	0	0									0	0%	0	0%
Focus / Clarity of Driver	0	0	0	0	0									0	0%	0	0%
Framing of Car	0	0	0	0	1									1	100%	0	0%
Operator / Data Error	0	0	0	0	0									0	0%	1	17%
Exposure	0	0	0	0	0									0	0%	0	0%
Equipment Malfunction	0	0	0	0	0									0	0%	2	33%
Xerox Expired	0	0	0	0	0									0	0%	2	33%
Total:	0	0	0	0	1									1	100%	6	100%
Summary Metrics													Year to Date Average		2013 Average		
Daily Ave Vehicle Passes	9,985	8,060	10,831	12,258	9,395									10,106		10,831	
Ave Issued Speed	33	31	37	32	37									34		32	
Ave Issued Red Seconds	0.5	0.3	0.4	4.0	3.1									2		1.2	
Citation / Violation Iss Rate	37%	49%	100%	56%	49%									58%		45%	
Controllable Iss Rate	100%	100%	100%	100%	94%									99%		91%	



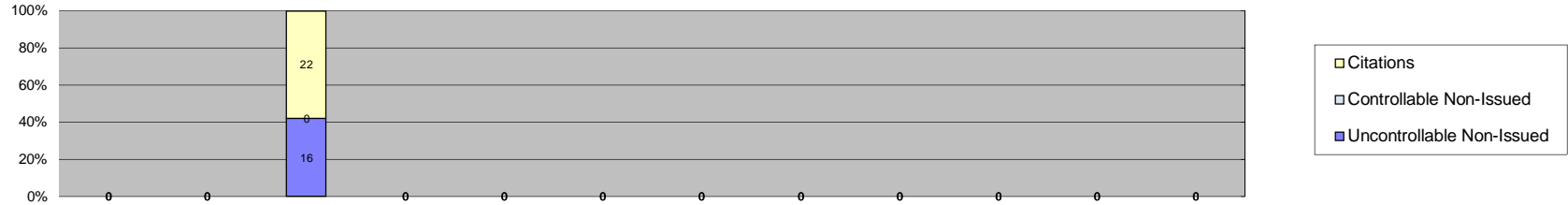
**City of West Hollywood
Approach Summary Report
Location 3153: E/B Santa Monica @ Fairfax (GLD-4 Camera System)**



Events	Jan-14	Feb-14	Mar-14	Apr-14	May-14	Jun-14	Jul-14	Aug-14	Sep-14	Oct-14	Nov-14	Dec-14	Year to Date Average		2013 Average		
													Quantity	%	Quantity	%	
Non-Violations	38	43	8	50	0									35	52%	20	38%
Violations	24	39	14	51	0									32	48%	33	62%
Total:	62	82	22	101	0									67	100%	52	100%
Violations																	
Uncontrollable Non-Issued	15	18	6	34	0									18	55%	14	42%
Controllable Non-Issued	0	5	5	2	0									4	12%	2	5%
Citations	9	16	3	15	0									11	33%	18	54%
Total:	24	39	14	51	0									33	100%	33	100%
Non-Violations																	
Rear Axle Violation	0	0	0	1	0									1	3%	1	4%
Emergency Vehicle	9	6	2	7	0									6	17%	4	13%
Right Turn	7	14	2	13	0									9	25%	7	25%
No Violation Occurred	22	23	4	29	0									20	55%	16	58%
Total:	38	43	8	50	0									36	100%	27	100%
Uncontrollable Non-Issued Violations																	
No Plate	4	12	2	12	0									8	28%	8	42%
Out of State Plate	4	1	1	4	0									3	9%	1	5%
Glare on Plate	0	0	0	2	0									2	7%	2	11%
Illegible Plate	0	0	0	1	0									1	4%	0	0%
Plate Obstructed	0	0	1	3	0									2	7%	1	5%
Windshield Glare	0	1	0	1	0									1	4%	4	21%
Driver Obstructed	1	0	0	0	0									1	4%	0	0%
Car Obstructed	1	1	0	0	0									1	4%	1	5%
No DMV Match Found	2	3	2	9	0									4	15%	2	11%
LASD Expired	2	0	0	0	0									2	7%	0	0%
LASD Return	0	0	0	2	0									2	7%	0	0%
Yellow Interval Not Met	0	0	0	0	0									0	0%	0	0%
Other	1	0	0	0	0									1	4%	0	0%
Total:	15	18	6	34	0									27	100%	19	100%
Controllable Non-Issued Violations																	
Framing of Plate	0	0	0	0	0									0	0%	0	0%
Focus / Clarity of Plate	0	0	0	0	0									0	0%	0	0%
Dark Interior	0	1	0	1	0									1	15%	1	33%
Framing of Driver	0	0	0	0	0									0	0%	0	0%
Focus / Clarity of Driver	0	0	0	0	0									0	0%	0	0%
Framing of Car	0	0	0	1	0									1	15%	0	0%
Operator / Data Error	0	0	0	0	0									0	0%	2	67%
Exposure	0	0	0	0	0									0	0%	0	0%
Equipment Malfunction	0	4	5	0	0									5	69%	0	0%
Xerox Expired	0	0	0	0	0									0	0%	0	0%
Total:	0	5	5	2	0									7	100%	3	100%
Summary Metrics													Year to Date Average		2013 Average		
Daily Ave Vehicle Passes	12,003	7,088	13,949	10,118	0									10,789		12,969	
Ave Issued Speed	33	34	30	30	0									32		31	
Ave Issued Red Seconds	0.3	0.4	0.3	0.5	0									0		0.6	
Citation / Violation Iss Rate	38%	41%	21%	29%	0%									32%		54%	
Controllable Iss Rate	100%	76%	38%	88%	0%									75%		92%	



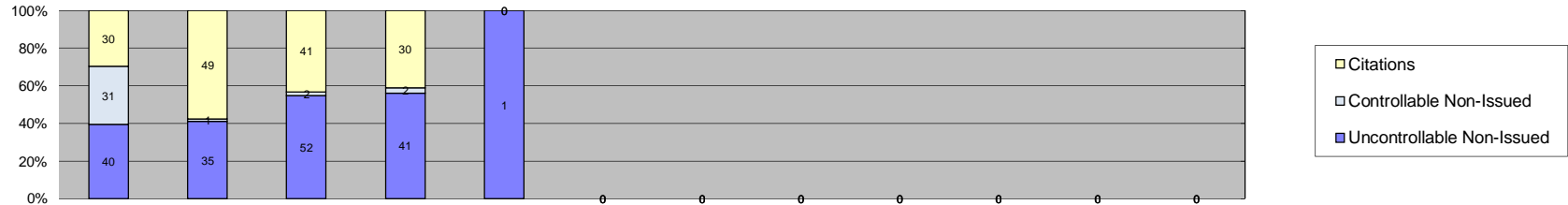
**City of West Hollywood
Approach Summary Report
Location 3154: W/B Santa Monica @ Fairfax (GLD-4 Camera System)**



Events	Jan-14	Feb-14	Mar-14	Apr-14	May-14	Jun-14	Jul-14	Aug-14	Sep-14	Oct-14	Nov-14	Dec-14	Year to Date Average		2013 Average		
													Quantity	%	Quantity	%	
Non-Violations	0	0	103	0	0									103	73%	78	77%
Violations	0	0	38	0	0									38	27%	23	23%
Total:	0	0	141	0	0									141	100%	101	100%
Violations																	
Uncontrollable Non-Issued	0	0	16	0	0									16	42%	13	57%
Controllable Non-Issued	0	0	0	0	0									0	0%	0	0%
Citations	0	0	22	0	0									22	58%	10	43%
Total:	0	0	38	0	0									38	100%	23	100%
Non-Violations																	
Rear Axle Violation	0	0	0	0	0									0	0%	0	0%
Emergency Vehicle	0	0	25	0	0									25	24%	18	23%
Right Turn	0	0	49	0	0									49	48%	32	40%
No Violation Occurred	0	0	29	0	0									29	28%	29	37%
Total:	0	0	103	0	0									103	100%	78	100%
Uncontrollable Non-Issued Violations																	
No Plate	0	0	3	0	0									3	19%	5	31%
Out of State Plate	0	0	3	0	0									3	19%	1	6%
Glare on Plate	0	0	2	0	0									2	13%	1	6%
Illegible Plate	0	0	5	0	0									5	31%	4	22%
Plate Obstructed	0	0	0	0	0									0	0%	1	6%
Windshield Glare	0	0	1	0	0									1	6%	1	6%
Driver Obstructed	0	0	0	0	0									0	0%	0	0%
Car Obstructed	0	0	0	0	0									0	0%	2	13%
No DMV Match Found	0	0	2	0	0									2	13%	2	9%
LASD Expired	0	0	0	0	0									0	0%	0	0%
LASD Return	0	0	0	0	0									0	0%	0	0%
Yellow Interval Not Met	0	0	0	0	0									0	0%	0	0%
Other	0	0	0	0	0									0	0%	0	0%
Total:	0	0	16	0	0									16	100%	16	100%
Controllable Non-Issued Violations																	
Framing of Plate	0	0	0	0	0									0	0	0	0
Focus / Clarity of Plate	0	0	0	0	0									0	0	0	0
Dark Interior	0	0	0	0	0									0	0	0	0
Framing of Driver	0	0	0	0	0									0	0	0	0
Focus / Clarity of Driver	0	0	0	0	0									0	0	0	0
Framing of Car	0	0	0	0	0									0	0	0	0
Operator / Data Error	0	0	0	0	0									0	0	0	0
Exposure	0	0	0	0	0									0	0	0	0
Equipment Malfunction	0	0	0	0	0									0	0	0	0
Xerox Expired	0	0	0	0	0									0	0	0	0
Total:	0	0	0	0	0									0	0%	0	0%
Summary Metrics													Year to Date Average		2013 Average		
Daily Ave Vehicle Passes	0	0	13,627	11,232	0									12,430		15,460	
Ave Issued Speed	0	0	30	0	0									30		27	
Ave Issued Red Seconds	0	0	0.4	0	0									0		0.2	
Citation / Violation Iss Rate	0%	0%	58%	0%	0%									58%		43%	
Controllable Iss Rate	0%	0%	100%	0%	0%									100%		100%	



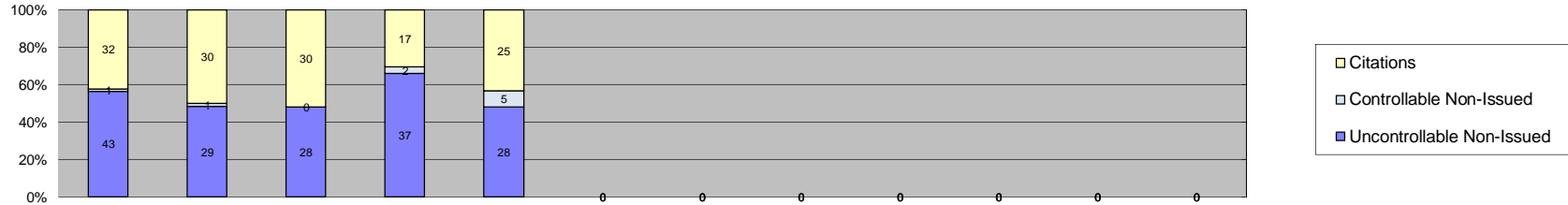
**City of West Hollywood
Approach Summary Report
Location 3161: N/B La Brea @ Santa Monica (GLD-4 Camera System)**



Events	Jan-14	Feb-14	Mar-14	Apr-14	May-14	Jun-14	Jul-14	Aug-14	Sep-14	Oct-14	Nov-14	Dec-14	Year to Date Average		2013 Average		
													Quantity	%	Quantity	%	
Non-Violations	115	90	924	37	0									292	80%	140	40%
Violations	101	85	95	73	1									71	20%	211	60%
Total:	216	175	1,019	110	1									363	100%	351	100%
Violations																	
Uncontrollable Non-Issued	40	35	52	41	1									34	42%	84	39%
Controllable Non-Issued	31	1	2	2	0									9	11%	5	2%
Citations	30	49	41	30	0									38	47%	125	59%
Total:	101	85	95	73	1									80	100%	213	100%
Non-Violations																	
Rear Axle Violation	3	1	5	2	0									3	1%	2	2%
Emergency Vehicle	4	3	3	3	0									3	1%	4	3%
Right Turn	62	56	67	19	0									51	17%	80	57%
No Violation Occurred	46	30	849	13	0									235	80%	55	39%
Total:	115	90	924	37	0									292	100%	140	100%
Uncontrollable Non-Issued Violations																	
No Plate	17	12	22	11	0									16	25%	39	42%
Out of State Plate	3	5	5	4	0									4	7%	3	4%
Glare on Plate	0	0	0	0	0									0	0%	2	2%
Illegible Plate	0	0	0	0	0									0	0%	2	2%
Plate Obstructed	0	2	3	1	0									2	3%	2	2%
Windshield Glare	0	6	2	5	1									4	6%	10	11%
Driver Obstructed	0	0	0	1	0									1	2%	1	1%
Car Obstructed	0	2	3	4	0									3	5%	5	5%
No DMV Match Found	10	8	16	3	0									9	15%	22	24%
LASD Expired	10	0	0	0	0									10	16%	2	2%
LASD Return	0	0	1	0	0									1	2%	2	2%
Yellow Interval Not Met	0	0	0	0	0									0	0%	0	0%
Other	0	0	0	12	0									12	20%	1	1%
Total:	40	35	52	41	1									62	100%	92	100%
Controllable Non-Issued Violations																	
Framing of Plate	0	0	0	0	0									0	0%	0	0%
Focus / Clarity of Plate	0	0	0	0	0									0	0%	0	0%
Dark Interior	0	0	0	0	0									0	0%	1	4%
Framing of Driver	0	0	0	0	0									0	0%	0	0%
Focus / Clarity of Driver	0	0	0	0	0									0	0%	0	0%
Framing of Car	0	0	0	0	0									0	0%	14	61%
Operator / Data Error	0	1	0	0	0									1	5%	1	4%
Exposure	0	0	2	0	0									2	10%	1	4%
Equipment Malfunction	31	0	0	2	0									17	85%	1	4%
Xerox Expired	0	0	0	0	0									0	0%	5	22%
Total:	31	1	2	2	0									20	100%	23	100%
Summary Metrics													Year to Date Average		2013 Average		
Daily Ave Vehicle Passes	16,212	15,184	16,849	14,860	17,166									16,054		16,474	
Ave Issued Speed	30	31	30	30	0									30		30	
Ave Issued Red Seconds	1.5	0.4	0.5	0.5	0									1		0.6	
Citation / Violation Iss Rate	30%	58%	43%	41%	0%									43%		59%	
Controllable Iss Rate	49%	98%	95%	94%	0%									84%		98%	



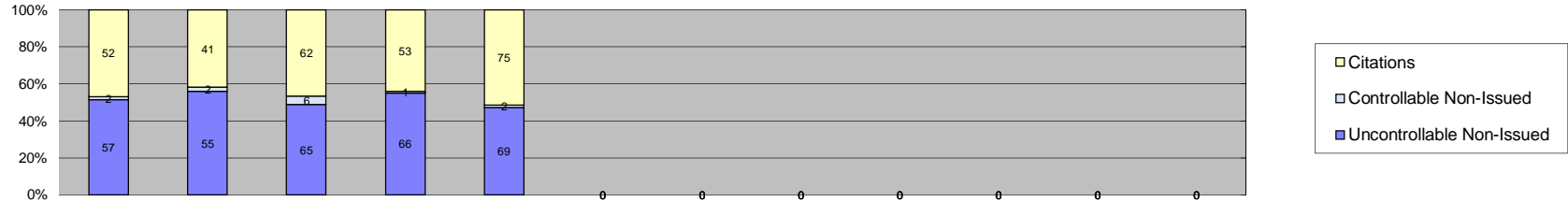
**City of West Hollywood
Approach Summary Report
Location 3162: S/B La Brea @ Santa Monica (GLD-4 Camera System)**



Events	Jan-14	Feb-14	Mar-14	Apr-14	May-14	Jun-14	Jul-14	Aug-14	Sep-14	Oct-14	Nov-14	Dec-14	Year to Date Average		2013 Average		
													Quantity	%	Quantity	%	
Non-Violations	208	169	226	237	202									208	77%	226	67%
Violations	76	60	58	56	58									62	23%	113	33%
Total:	284	229	284	293	260									270	100%	339	100%
Violations																	
Uncontrollable Non-Issued	43	29	28	37	28									33	53%	48	42%
Controllable Non-Issued	1	1	0	2	5									2	4%	2	2%
Citations	32	30	30	17	25									27	43%	63	56%
Total:	76	60	58	56	58									62	100%	114	100%
Non-Violations																	
Rear Axle Violation	0	2	0	1	2									2	1%	3	1%
Emergency Vehicle	9	1	4	7	4									5	2%	5	2%
Right Turn	100	86	111	116	121									107	51%	88	39%
No Violation Occurred	99	80	111	113	75									96	46%	132	58%
Total:	208	169	226	237	202									209	100%	228	100%
Uncontrollable Non-Issued Violations																	
No Plate	17	9	10	13	12									12	28%	22	39%
Out of State Plate	2	3	7	2	3									3	8%	2	3%
Glare on Plate	0	0	0	0	0									0	0%	2	3%
Illegible Plate	2	2	1	2	1									2	4%	2	3%
Plate Obstructed	1	0	1	1	0									1	2%	2	4%
Windshield Glare	0	5	1	7	4									4	10%	6	11%
Driver Obstructed	0	0	1	0	0									1	2%	1	2%
Car Obstructed	1	2	3	4	1									2	5%	3	5%
No DMV Match Found	7	7	4	6	3									5	12%	11	19%
LASD Expired	11	0	0	0	0									11	25%	4	6%
LASD Return	2	1	0	2	4									2	5%	1	2%
Yellow Interval Not Met	0	0	0	0	0									0	0%	0	0%
Other	0	0	0	0	0									0	0%	1	2%
Total:	43	29	28	37	28									44	100%	57	100%
Controllable Non-Issued Violations																	
Framing of Plate	0	0	0	0	0									0	0%	0	0%
Focus / Clarity of Plate	0	0	0	0	0									0	0%	0	0%
Dark Interior	1	1	0	2	2									2	33%	2	30%
Framing of Driver	0	0	0	0	0									0	0%	0	0%
Focus / Clarity of Driver	0	0	0	0	0									0	0%	0	0%
Framing of Car	0	0	0	0	0									0	0%	0	0%
Operator / Data Error	0	0	0	0	2									2	44%	0	0%
Exposure	0	0	0	0	1									1	22%	0	0%
Equipment Malfunction	0	0	0	0	0									0	0%	0	0%
Xerox Expired	0	0	0	0	0									0	0%	4	70%
Total:	1	1	0	2	5									5	100%	6	100%
Summary Metrics																	
Daily Ave Vehicle Passes	12,954	11,469	13,620	12,967	13,032									12,808		14,173	
Ave Issued Speed	30	29	29	30	31									30		31	
Ave Issued Red Seconds	1.7	0.3	0.5	0.4	0.4									1		0.4	
Citation / Violation Iss Rate	42%	50%	52%	30%	43%									43%		56%	
Controllable Iss Rate	97%	97%	100%	89%	83%									93%		98%	



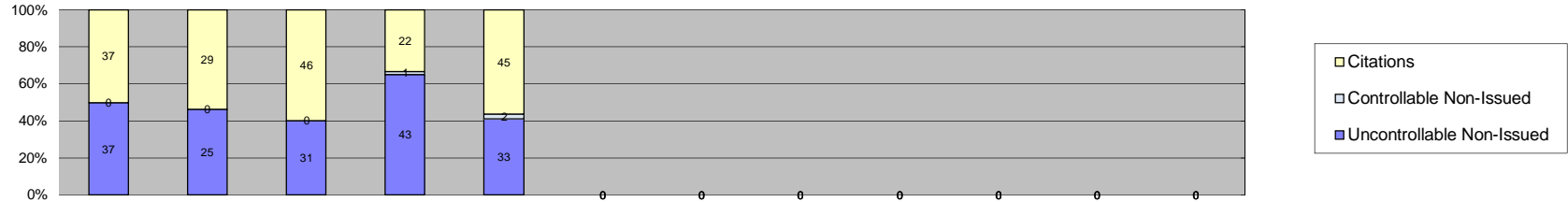
**City of West Hollywood
Approach Summary Report
Location 3163: E/B Santa Monica @ La Brea (GLD-4 Camera System)**



Events	Jan-14	Feb-14	Mar-14	Apr-14	May-14	Jun-14	Jul-14	Aug-14	Sep-14	Oct-14	Nov-14	Dec-14	Year to Date Average		2013 Average		
													Quantity	%	Quantity	%	
Non-Violations	43	37	52	46	48									45	27%	50	24%
Violations	111	98	133	120	146									122	73%	156	76%
Total:	154	135	185	166	194									167	100%	206	100%
Violations																	
Uncontrollable Non-Issued	57	55	65	66	69									62	51%	63	40%
Controllable Non-Issued	2	2	6	1	2									3	2%	3	2%
Citations	52	41	62	53	75									57	47%	91	58%
Total:	111	98	133	120	146									122	100%	157	100%
Non-Violations																	
Rear Axle Violation	1	0	1	1	0									1	2%	1	3%
Emergency Vehicle	3	1	1	0	1									2	3%	2	5%
Right Turn	29	28	32	36	33									32	69%	32	63%
No Violation Occurred	10	8	18	9	14									12	26%	15	30%
Total:	43	37	52	46	48									46	100%	51	100%
Uncontrollable Non-Issued Violations																	
No Plate	17	22	38	24	27									26	34%	29	41%
Out of State Plate	6	9	6	10	7									8	10%	3	4%
Glare on Plate	0	0	0	0	0									0	0%	1	1%
Illegible Plate	0	0	0	2	2									2	3%	2	3%
Plate Obstructed	0	0	0	1	0									1	1%	2	3%
Windshield Glare	1	2	0	4	6									3	4%	6	8%
Driver Obstructed	1	3	2	3	3									2	3%	1	2%
Car Obstructed	3	2	3	3	1									2	3%	3	4%
No DMV Match Found	11	16	12	15	14									14	18%	19	26%
LASD Expired	10	0	0	0	0									10	13%	3	4%
LASD Return	4	1	4	4	6									4	5%	2	2%
Yellow Interval Not Met	0	0	0	0	0									0	0%	0	0%
Other	4	0	0	0	3									4	5%	1	1%
Total:	57	55	65	66	69									75	100%	71	100%
Controllable Non-Issued Violations																	
Framing of Plate	0	0	0	0	0									0	0%	0	0%
Focus / Clarity of Plate	0	0	0	0	0									0	0%	0	0%
Dark Interior	2	2	6	1	2									3	100%	2	20%
Framing of Driver	0	0	0	0	0									0	0%	0	0%
Focus / Clarity of Driver	0	0	0	0	0									0	0%	0	0%
Framing of Car	0	0	0	0	0									0	0%	0	0%
Operator / Data Error	0	0	0	0	0									0	0%	0	0%
Exposure	0	0	0	0	0									0	0%	1	10%
Equipment Malfunction	0	0	0	0	0									0	0%	6	60%
Xerox Expired	0	0	0	0	0									0	0%	1	10%
Total:	2	2	6	1	2									3	100%	10	100%
Summary Metrics																	
Daily Ave Vehicle Passes	13,986	13,908	14,649	13,333	13,301									13,835		16,029	
Ave Issued Speed	31	32	30	30	30									31		30	
Ave Issued Red Seconds	0.4	0.4	0.4	0.4	0.9									1		0.4	
Citation / Violation Iss Rate	47%	42%	47%	44%	51%									46%		58%	
Controllable Iss Rate	96%	95%	91%	98%	97%									96%		98%	



**City of West Hollywood
Approach Summary Report
Location 3164: W/B Santa Monica @ La Brea (GLD-4 Camera System)**



Events	Jan-14	Feb-14	Mar-14	Apr-14	May-14	Jun-14	Jul-14	Aug-14	Sep-14	Oct-14	Nov-14	Dec-14	Year to Date Average		2013 Average		
													Quantity	%	Quantity	%	
Non-Violations	28	37	44	32	63									41	37%	29	27%
Violations	74	54	77	66	80									70	63%	80	73%
Total:	102	91	121	98	143									111	100%	109	100%
Violations																	
Uncontrollable Non-Issued	37	25	31	43	33									34	48%	35	44%
Controllable Non-Issued	0	0	0	1	2									2	2%	2	3%
Citations	37	29	46	22	45									36	50%	43	53%
Total:	74	54	77	66	80									71	100%	80	100%
Non-Violations																	
Rear Axle Violation	0	2	5	0	0									4	8%	1	4%
Emergency Vehicle	1	3	12	1	2									4	9%	3	10%
Right Turn	18	22	20	20	37									23	55%	16	54%
No Violation Occurred	9	10	7	11	24									12	28%	10	32%
Total:	28	37	44	32	63									43	100%	30	100%
Uncontrollable Non-Issued Violations																	
No Plate	18	13	18	14	18									16	38%	15	34%
Out of State Plate	2	1	4	5	1									3	6%	2	4%
Glare on Plate	0	0	0	1	0									1	2%	2	5%
Illegible Plate	1	0	0	1	0									1	2%	0	0%
Plate Obstructed	0	0	1	0	0									1	2%	1	3%
Windshield Glare	1	1	3	11	5									4	10%	9	21%
Driver Obstructed	0	0	0	0	0									0	0%	0	0%
Car Obstructed	3	1	0	0	0									2	5%	2	4%
No DMV Match Found	7	7	4	10	7									7	17%	9	20%
LASD Expired	5	0	0	0	0									5	12%	2	5%
LASD Return	0	2	1	0	1									1	3%	2	5%
Yellow Interval Not Met	0	0	0	0	0									0	0%	0	0%
Other	0	0	0	1	1									1	2%	0	0%
Total:	37	25	31	43	33									42	100%	43	100%
Controllable Non-Issued Violations																	
Framing of Plate	0	0	0	1	0									1	33%	1	24%
Focus / Clarity of Plate	0	0	0	0	0									0	0%	0	0%
Dark Interior	0	0	0	0	2									2	67%	1	32%
Framing of Driver	0	0	0	0	0									0	0%	0	0%
Focus / Clarity of Driver	0	0	0	0	0									0	0%	0	0%
Framing of Car	0	0	0	0	0									0	0%	0	0%
Operator / Data Error	0	0	0	0	0									0	0%	0	0%
Exposure	0	0	0	0	0									0	0%	0	0%
Equipment Malfunction	0	0	0	0	0									0	0%	2	44%
Xerox Expired	0	0	0	0	0									0	0%	0	0%
Total:	0	0	0	1	2									3	100%	4	100%
Summary Metrics													Year to Date Average		2013 Average		
Daily Ave Vehicle Passes	13,599	13,423	14,520	14,078	13,265									13,777		14,982	
Ave Issued Speed	35	31	31	33	30									32		33	
Ave Issued Red Seconds	1.1	0.4	0.4	0.4	0.4									1		0.4	
Citation / Violation Iss Rate	50%	54%	60%	33%	56%									51%		56%	
Controllable Iss Rate	100%	100%	100%	96%	96%									98%		97%	



Calls For Information

Reason for Call	May-14	3 Month Average	Year to Date Average	Year to Date Total	2013 Average
<i>Appointment</i>	27	23	26	129	29
<i>Bail</i>	18	15	16	79	21
<i>Complaint</i>	0	0	0	0	0
<i>Contest Violation</i>	11	15	14	71	24
<i>Courtesy Notice</i>	0	2	2	11	3
<i>Explain Citation</i>	7	6	7	33	9
<i>Explain Court</i>	0	0	0	0	0
<i>Explain the Project</i>	0	0	0	0	0
<i>Extension</i>	5	7	7	36	7
<i>Other</i>	0	0	0	0	0
<i>Affidavit of Non-Liability</i>	18	15	16	78	21
<i>Affidavit of Non-Liability Status</i>	3	0	1	6	1
<i>Traffic School</i>	2	4	4	21	7
Total Calls	91	88	93	464	122

Administrative Processing	May-13	3 Month Average	Year to Date Average	Year to Date Total	Year to Date Average
Appointments Scheduled	16	21	21	105	25
Affidavits of Non-Liability Processed	160	166	172	862	248
Court Packets Prepared	72	81	77	383	94
Trial By Declaration Packets Prepared	13	11	14	72	26



City of West Hollywood
Monthly Citation Yield - By Location
May 2014

Direction	Location	Code	Days of Enforcement	Events	Violations	Citations	Yield*
EB	Beverly & Robertson	3103	31	224	164	55	1.8
WB	Beverly & Robertson	3104	31	201	193	79	2.5
NB	Fairfax & Fountain	3111	31	209	187	50	1.6
SB	Fairfax & Fountain	3112	31	57	47	17	0.5
EB	Fountain & Fairfax	3113	30	65	18	9	0.3
NB	Crescent Heights & Fountain	3121	31	66	47	25	0.8
SB	Crescent Heights & Fountain	3122	31	71	43	21	0.7
EB	Fountain & Crescent Heights	3123	0	0	0	0	NA
WB	Fountain & Crescent Heights	3124	0	0	0	0	NA
NB	La Cienega & Melrose	3131	31	216	187	102	3.3
SB	La Cienega & Melrose	3132	31	230	126	84	2.7
EB	Melrose & La Cienega	3133	0	0	0	0	NA
NB	La Brea & Fountain	3141	31	352	78	37	1.2
SB	La Brea & Fountain	3142	31	662	89	44	1.4
EB	Sunset & La Cienega	3143	31	711	111	45	1.5
WB	Sunset & La Cienega	3144	31	159	108	40	1.3
NB	Fairfax & Santa Monica	3151	31	61	48	22	0.7
SB	Fairfax & Santa Monica	3152	30	50	35	17	0.6
EB	Santa Monica & Fairfax	3153	1	0	0	0	0.0
WB	Santa Monica & Fairfax	3154	0	0	0	0	NA
NB	La Brea & Santa Monica	3161	1	1	1	0	0.0
SB	La Brea & Santa Monica	3162	31	260	58	25	0.8
EB	Santa Monica & La Brea	3163	31	194	146	75	2.4
WB	Santa Monica & La Brea	3164	31	143	80	45	1.5
Totals			Average Days of Enf. 27.9	3,932	1,766	792	28

*Yield is the average number of citations issued per day of enforcement.

	Location not active (Part of Rotation Schedule)
	Location active (Part of Rotation Schedule or In Place of Damaged Location)



City of West Hollywood
 Camera Rotation Log
 May 2014

DATE	3103	3104	3111	3112	3113	3121	3122	3123	3124	3131	3132	3133	3141	3142	3143	3144	3151	3152	3153	3154	3161	3162	3163	3164
05/01/14			1691/22	1605/12									1506/70	1241/74			1270/2	1510/8	1921/2r					
05/02/14	1374/38	1847/32				1105/10	1133/8			1504/24	1151/28				1392/76	1887/26								
05/03/14																								
05/04/14																								
05/05/14	1374/62	1847/28	1691/56	1605/10	1921/12i	1105/12	1133/18			1504/36	1151/54		1506/130	1241/220	1392/138	1887/32	1270/18	1510/16						
05/06/14			1691/8	1605/0	1921/0								1506/26	1241/36			1270/0	1510/4						
05/07/14	1374/26	1847/26				1105/10	1133/4			1504/16	1151/34				1392/86	1887/16								
05/08/14			1691/26	1605/2	1921/12								1506/62	1241/88			1270/4	1510/12						
05/09/14	1374/28	1847/24				1105/6	1133/4			1504/22	1151/38				1392/72	1887/22								
05/10/14																								
05/11/14																								
05/12/14																								
05/13/14	1374/70	1847/42	1691/68	1605/26	1921/24	1105/12	1133/16			1504/54	1151/70		1506/110	1241/200	1392/178	1887/30	1270/14	1510/26						
05/14/14	1374/4	1847/22	1691/14	1605/8	1921/6	1105/12	1133/10			1504/24	1151/10		1506/50	1241/58	1392/40	1887/24	1270/0	1510/6						
05/15/14			1691/14	1605/0	1921/4								1506/26	1241/54			1270/8	1510/2						
05/16/14	1374/0	1847/36				1105/16	1133/18			1504/24	1151/36				1392/118	1887/22								
05/17/14																								
05/18/14																								
05/19/14	1374/36	1847/40	1691/56	1605/24	1921/14	1105/14	1133/14			1504/52	1151/38		1506/14r	1241/194	1392/172	1887/28	1270/26	1510/30						
05/20/14			1691/20	1605/4	1921/8								1200/0i	1241/46			1270/8	1510/4r						
05/21/14	1374/38	1847/20				1105/14	1133/8			1504/23	1151/24				1392/90	1887/24								
05/22/14			1691/28	1605/4	1921/18								1200/2	1241/90			1270/14	1510/0						
05/23/14	1374/28	1847/26				1105/6	1133/22			1504/24	1151/20				1392/66	1887/30								
05/24/14																								
05/25/14																								
05/26/14																								
05/27/14	1374/56	1847/44	1691/70	1605/14	1921/26	1105/18	1133/12			1504/62	1151/50		1200/164	1241/186	1392/192	1887/42	1270/12	1510/0						
05/28/14	1374/14	1847/24				1105/2	1133/2			1504/6	1151/22				1392/52	1887/6		1510/0						
05/29/14			1691/16	1605/8	1921/6								1200/70	1241/110			1270/4							
05/30/14	1374/38	1847/396	1691/10	1605/12	1921/4	1105/8	1133/10			1504/32	1151/14		1200/20	1241/38	1392/88	1887/28	1270/4	1510/0						
05/31/14																								

3103 = EB Beverly & Robertson
 3104 = WB Beverly & Robertson
 3111 = NB Fairfax & Fountain
 3112 = SB Fairfax & Fountain
 3113 = EB Fountain & Fairfax

3121 = NB Crescent Heights & Fountain
 3122 = SB Crescent Heights & Fountain
 3123 = EB Fountain & Crescent Heights
 3124 = WB Fountain & Crescent Heights
 3131 = NB La Cienega & Melrose

3132 = SB La Cienega & Melrose
 3133 = EB Melrose & La Cienega
 3141 = NB La Brea & Fountain
 3142 = SB La Brea & Fountain
 3143 = EB Sunset & La Cienega

3144 = WB Sunset & La Cienega
 3151 = NB Fairfax & Santa Monica
 3152 = SB Fairfax & Santa Monica
 3153 = EB Santa Monica & Fairfax
 3154 = WB Santa Monica & Fairfax

3161 = NB La Brea & Santa Monica
 3162 = SB La Brea & Santa Monica
 3163 = EB Santa Monica & La Brea
 3164 = WB Santa Monica & La Brea

	Weekend
	Holiday
	Location Not Active (Rotation Schedule)
	Location Active (Rotation Schedule or In Place of Damaged Location)
	Location Out of Service (Damaged)



City of West Hollywood
Disposition Summary Report
May 2014

	May-14		3 Month Average		YTD Total		YTD Average		2013 Average	
Disposition Type	Count /Amount Paid		Count /Amount Paid		Count /Amount Paid		Count /Amount Paid		Count /Amount Paid	
<i>Bail Forfeiture</i>	179	\$91,017	147	\$74,388	827	\$418,708	165	\$83,742	282	\$145,653
<i>Fine Paid</i>	58	\$28,435	122	\$59,112	467	\$229,337	93	\$45,867	48	\$24,918
<i>Department Void</i>	0	\$0	0	\$0	0	\$0	0	\$0	0	\$0
<i>Not Guilty</i>	1,154	\$0	339	\$0	2,547	\$0	509	\$0	420	\$0
<i>Section D Void</i>	160	\$0	166	\$0	862	\$0	172	\$0	248	\$0
<i>Traffic School</i>	172	\$88,936	201	\$102,338	954	\$485,864	191	\$97,173	170	\$88,652
Court Gross Total	1723	\$208,388	975	\$235,837	5,657	\$1,133,909	1,131	\$226,782	1,168	\$259,224
City Gross Total*	409	\$60,140	470	\$69,164	2,248	\$330,565	450	\$66,113	500	\$73,463

*Logic built on following model (assuming the new 2009 fine and fee structure):

City receives \$146.31 of \$446.00 citation where bail forfeiture and fine paid occurs

City receives \$148.05 of \$509.00 citation when traffic school option is paid for



City of West Hollywood
Performance Report
May 2014

	<u>Total Events</u>	<u>Non Violations</u>	<u>Percent Citable</u>	<u>Potential Violations</u>	<u>Initial Rejects</u>	<u>Actual Violations</u>	<u>N/A Returns</u>	<u>Police/ Client Rejected</u>	<u>Issuance Rate</u>	<u>Citations Issued</u>	<u>Fine Paid</u>	<u>Bail Forfeiture</u>	<u>Traffic School</u>	<u>Sum of Paid</u>	<u>Pay Rate</u>	<u>Closed No Pay</u>	<u>Cancel Nixie</u>	<u>Pending</u>	<u>Closure Rate</u>	<u>Court Packs</u>	<u>TbD Packs</u>	<u>Contest Rate</u>
Aug-99	5,074	2,969	41%	2,105	1,412	693	486	4	23%	482	21	148	201	370	77%	104	1	7	98%	-	-	-
Sep-99	5,607	3,163	44%	2,444	1,499	945	635	0	26%	635	22	176	284	482	76%	118	14	21	94%	-	-	-
Oct-99	7,141	3,425	52%	3,716	1,897	1,819	1,533	11	41%	1,522	45	451	656	1,152	76%	297	28	45	95%	-	-	-
Nov-99	6,954	3,908	44%	3,046	1,160	1,886	1,698	4	56%	1,694	45	557	692	1,294	76%	301	53	46	94%	-	-	-
Dec-99	6,909	3,728	46%	3,181	1,300	1,881	1,759	4	55%	1,755	31	581	755	1,367	78%	254	44	90	92%	-	-	-
Jan-00	6,380	3,365	47%	3,015	1,343	1,672	1,662	31	54%	1,631	54	568	645	1,267	78%	218	44	102	91%	-	-	-
Feb-00	5,654	2,699	52%	2,955	1,377	1,578	1,548	11	52%	1,537	38	517	603	1,158	75%	270	53	56	93%	-	-	-
Mar-00	6,159	2,902	53%	3,257	1,631	1,612	1,612	3	49%	1,609	32	541	636	1,209	75%	283	50	67	93%	-	-	-
Apr-00	5,345	2,897	46%	2,448	1,275	1,173	1,157	9	47%	1,148	27	407	421	855	74%	236	21	36	95%	-	-	-
May-00	6,865	3,931	43%	2,934	1,442	1,492	1,479	3	50%	1,476	46	546	544	1,136	77%	204	16	120	91%	-	-	-
Jun-00	7,428	3,998	46%	3,430	1,507	1,923	1,900	3	55%	1,897	69	678	706	1,453	77%	244	20	180	89%	-	-	-
Jul-00	6,638	3,611	46%	3,027	1,521	1,506	1,491	3	49%	1,488	63	538	548	1,149	77%	197	3	139	90%	-	-	-
Aug-00	4,791	1,580	67%	3,211	1,451	1,760	1,736	0	54%	1,736	70	595	629	1,294	75%	233	-	209	88%	-	-	-
Sep-00	4,529	1,729	62%	2,800	1,205	1,595	1,574	1	56%	1,573	61	619	532	1,212	77%	221	-	140	91%	-	-	-
Oct-00	4,284	1,583	63%	2,701	1,172	1,529	1,505	0	56%	1,505	54	528	566	1,148	76%	209	-	148	90%	-	-	-
Nov-00	4,176	1,509	64%	2,667	1,043	1,624	1,608	0	60%	1,608	58	618	565	1,241	77%	234	-	133	92%	-	-	-
Dec-00	4,068	1,519	63%	2,549	983	1,566	1,545	0	61%	1,545	72	527	558	1,157	75%	226	-	162	90%	-	-	-
Jan-01	3,639	1,423	61%	2,216	868	1,348	1,321	0	60%	1,321	60	475	487	1,022	77%	172	-	127	90%	-	-	-
Feb-01	3,795	1,204	68%	2,591	1,058	1,533	1,522	0	59%	1,522	65	559	513	1,137	75%	223	-	162	89%	-	-	-
Mar-01	4,093	1,166	72%	2,927	1,240	1,687	1,660	1	57%	1,659	53	644	557	1,254	76%	202	-	203	88%	-	-	-
Apr-01	3,497	1,422	59%	2,075	900	1,175	1,156	0	56%	1,156	43	447	393	883	76%	133	-	140	88%	-	-	-
May-01	3,406	1,264	63%	2,142	1,098	1,044	1,037	0	48%	1,037	42	362	367	771	74%	118	-	148	86%	-	-	-
Jun-01	4,041	1,411	65%	2,630	1,115	1,515	1,495	0	57%	1,495	68	566	488	1,122	75%	132	-	241	84%	-	-	-
Jul-01	5,308	2,289	57%	3,019	1,280	1,739	1,718	2	57%	1,716	67	574	528	1,169	68%	261	-	286	83%	-	-	-
Aug-01	5,503	1,942	65%	3,561	1,301	2,260	2,222	0	62%	2,222	129	826	663	1,618	73%	210	-	394	82%	-	-	-
Sep-01	4,784	1,625	66%	3,159	1,118	2,041	2,001	0	63%	2,001	94	750	637	1,481	74%	167	-	353	82%	-	-	-
Oct-01	4,819	1,894	61%	2,925	1,028	1,897	1,862	0	64%	1,862	83	693	611	1,387	74%	193	-	282	85%	-	-	-
Nov-01	3,873	1,357	65%	2,516	934	1,582	1,540	17	61%	1,523	55	564	543	1,162	76%	119	-	242	84%	-	-	-
Dec-01	3,993	1,703	57%	2,290	954	1,336	1,275	7	55%	1,268	49	460	455	964	76%	115	-	189	85%	-	-	-
Jan-02	3,850	1,518	61%	2,332	956	1,376	1,336	2	57%	1,334	76	487	440	1,003	75%	107	-	224	83%	-	-	-
Feb-02	3,784	1,413	63%	2,371	829	1,542	1,520	2	64%	1,518	64	540	537	1,141	75%	126	-	251	83%	-	-	-
Mar-02	5,093	2,238	56%	2,855	1,083	1,772	1,741	9	61%	1,732	57	668	576	1,301	75%	133	-	298	83%	-	-	-
Apr-02	4,475	1,779	60%	2,696	953	1,743	1,713	11	63%	1,702	53	663	560	1,276	75%	152	-	274	84%	-	-	-
May-02	4,421	1,484	66%	2,937	1,063	1,874	1,853	0	63%	1,853	62	726	613	1,401	76%	152	-	300	84%	-	-	-
Jun-02	4,551	1,347	70%	3,204	1,287	1,917	1,876	0	59%	1,876	49	756	594	1,399	75%	161	-	316	83%	-	-	-
Jul-02	4,597	1,414	69%	3,183	1,162	2,021	1,995	4	63%	1,991	72	781	656	1,509	76%	153	-	329	83%	-	-	-
Aug-02	4,251	1,273	70%	2,978	1,076	1,902	1,834	7	61%	1,827	67	723	569	1,359	74%	150	-	318	83%	-	-	-
Sep-02	4,033	1,414	65%	2,619	958	1,661	1,630	19	62%	1,611	62	613	516	1,191	74%	138	-	282	82%	-	-	-
Oct-02	4,024	1,220	70%	2,804	1,085	1,719	1,650	0	59%	1,650	57	589	573	1,219	74%	134	-	297	82%	-	-	-
Nov-02	3,643	1,290	65%	2,353	914	1,439	1,386	2	59%	1,384	41	556	417	1,014	73%	127	-	243	82%	-	-	-
Dec-02	3,802	1,499	61%	2,303	821	1,482	1,377	0	60%	1,377	40	518	450	1,008	73%	132	-	237	83%	-	-	-



City of West Hollywood
Performance Report
May 2014

	<u>Total</u> <u>Events</u>	<u>Non</u> <u>Violations</u>	<u>Percent</u> <u>Citable</u>	<u>Potential</u> <u>Violations</u>	<u>Initial</u> <u>Rejects</u>	<u>Actual</u> <u>Violations</u>	<u>N/A</u> <u>Returns</u>	<u>Police/</u> <u>Client</u> <u>Rejected</u>	<u>Issuance</u> <u>Rate</u>	<u>Citations</u> <u>Issued</u>	<u>Fine</u> <u>Paid</u>	<u>Bail</u> <u>Forfeiture</u>	<u>Traffic</u> <u>School</u>	<u>Sum of</u> <u>Paid</u>	<u>Pay</u> <u>Rate</u>	<u>Closed</u> <u>No Pay</u>	<u>Cancel</u> <u>Nixie</u>	<u>Pending</u>	<u>Closure</u> <u>Rate</u>	<u>Court</u> <u>Packs</u>	<u>TbD</u> <u>Packs</u>	<u>Contest</u> <u>Rate</u>
Jan-03	3,897	1,411	64%	2,486	864	1,622	1,461	1	59%	1,460	42	547	482	1,071	73%	125	-	264	82%	-	-	-
Feb-03	3,493	1,192	66%	2,301	872	1,429	1,339	3	58%	1,336	44	502	417	963	72%	140	-	233	83%	-	-	-
Mar-03	3,934	1,327	66%	2,607	941	1,666	1,568	92	57%	1,476	60	537	456	1,053	71%	179	-	244	83%	-	-	-
Apr-03	3,635	1,297	64%	2,338	830	1,508	1,426	155	54%	1,271	39	498	367	904	71%	129	-	238	81%	-	-	-
May-03	3,722	1,341	64%	2,381	903	1,478	1,412	69	56%	1,343	36	493	420	949	71%	133	-	261	81%	-	-	-
Jun-03	3,798	1,489	61%	2,309	854	1,455	1,427	87	58%	1,340	47	502	406	955	71%	136	-	249	81%	-	-	-
Jul-03	3,601	1,249	65%	2,352	874	1,478	1,443	74	58%	1,369	50	506	439	995	73%	145	-	229	83%	-	-	-
Aug-03	3,532	1,215	66%	2,317	871	1,446	1,423	15	61%	1,408	46	549	400	995	71%	139	-	274	81%	-	-	-
Sep-03	3,372	1,221	64%	2,151	722	1,429	1,405	63	62%	1,342	58	532	423	1,013	75%	115	-	214	84%	-	-	-
Oct-03	3,572	1,309	63%	2,263	777	1,486	1,453	59	62%	1,394	36	560	431	1,027	74%	113	-	254	82%	-	-	-
Nov-03	3,236	1,123	65%	2,113	773	1,340	1,311	31	61%	1,280	37	517	359	913	71%	136	-	231	82%	-	-	-
Dec-03	2,957	1,079	64%	1,878	672	1,206	1,177	48	60%	1,129	41	414	344	799	71%	128	-	202	82%	-	-	-
Jan-04	3,098	1,135	63%	1,963	681	1,282	1,259	46	62%	1,213	40	462	405	907	75%	98	-	208	83%	-	-	-
Feb-04	3,539	1,173	67%	2,366	752	1,614	1,587	113	62%	1,474	62	580	408	1,050	71%	132	-	292	80%	-	-	-
Mar-04	3,683	1,199	67%	2,484	878	1,606	1,573	223	54%	1,350	55	516	398	969	72%	138	-	243	82%	-	-	-
Apr-04	2,985	1,121	62%	1,864	664	1,200	1,176	86	58%	1,090	43	433	346	822	75%	73	-	195	82%	-	-	-
May-04	3,402	1,191	65%	2,211	759	1,452	1,422	91	60%	1,331	57	500	421	978	73%	103	-	250	81%	-	-	-
Jun-04	3,258	1,079	67%	2,179	879	1,300	1,270	11	58%	1,259	43	511	386	940	75%	94	-	225	82%	-	-	-
Jul-04	3,450	1,123	67%	2,327	849	1,478	1,441	90	58%	1,351	50	531	436	1,017	75%	92	-	242	82%	-	-	-
Aug-04	3,915	1,273	67%	2,642	913	1,729	1,686	87	61%	1,599	74	632	482	1,188	74%	110	-	301	81%	-	-	-
Sep-04	3,400	1,161	66%	2,239	808	1,431	1,404	66	60%	1,338	58	539	426	1,023	76%	109	-	206	85%	-	-	-
Oct-04	3,547	1,239	65%	2,308	846	1,462	1,421	69	59%	1,352	60	563	409	1,032	76%	91	-	229	83%	-	-	-
Nov-04	3,313	1,217	63%	2,096	773	1,323	1,298	37	60%	1,261	48	539	357	944	75%	104	-	213	83%	-	-	-
Dec-04	3,294	1,208	63%	2,086	774	1,312	1,285	88	57%	1,197	51	481	374	906	76%	88	-	203	83%	-	-	-
Jan-05	2,926	1,073	63%	1,853	698	1,155	1,130	115	55%	1,015	46	417	299	762	75%	74	-	179	82%	-	-	-
Feb-05	3,198	1,133	65%	2,065	753	1,312	1,292	118	57%	1,174	52	469	341	862	73%	85	-	227	81%	-	-	-
Mar-05	3,446	1,179	66%	2,267	790	1,477	1,404	103	57%	1,301	63	537	386	986	76%	81	-	234	82%	-	-	-
Apr-05	3,267	1,237	62%	2,030	744	1,286	1,264	164	54%	1,100	53	457	303	813	74%	91	-	196	82%	-	-	-
May-05	2,979	1,083	64%	1,896	638	1,258	1,243	108	60%	1,135	39	457	353	849	75%	79	-	207	82%	-	-	-
Jun-05	3,048	1,051	66%	1,997	727	1,270	1,254	89	58%	1,165	50	470	332	852	73%	88	-	225	81%	-	-	-
Jul-05	3,531	1,183	66%	2,348	939	1,409	1,388	94	55%	1,294	58	505	390	953	74%	79	-	262	80%	-	-	-
Aug-05	3,688	1,198	68%	2,490	1,099	1,391	1,373	54	53%	1,319	64	504	397	965	73%	101	-	253	81%	-	-	-
Sep-05	3,645	1,243	66%	2,402	719	1,683	1,665	121	64%	1,544	74	581	519	1,174	76%	99	-	271	82%	-	-	-
Oct-05	3,284	1,133	65%	2,151	794	1,357	1,338	53	60%	1,285	61	505	387	953	74%	102	-	230	82%	-	-	-
Nov-05	3,693	1,383	63%	2,310	712	1,598	1,570	60	65%	1,510	70	566	486	1,122	74%	131	-	257	83%	-	-	-
Dec-05	3,376	1,409	58%	1,967	602	1,365	1,344	70	65%	1,274	53	437	402	892	70%	163	-	219	83%	-	-	-
Jan-06	3,501	1,385	60%	2,116	708	1,408	1,386	55	63%	1,331	74	506	388	968	73%	130	-	233	82%	133	-	10%
Feb-06	3,398	1,306	62%	2,092	767	1,325	1,298	76	58%	1,222	62	462	368	892	73%	137	-	193	84%	111	-	8%
Mar-06	3,837	1,537	60%	2,300	738	1,562	1,536	110	62%	1,426	74	528	418	1,020	72%	164	-	242	83%	135	-	9%
Apr-06	3,893	1,799	54%	2,094	767	1,327	1,307	106	57%	1,201	63	425	375	863	72%	165	-	173	86%	113	-	9%
May-06	3,791	1,476	61%	2,315	711	1,604	1,575	122	63%	1,453	55	567	408	1,030	71%	167	-	256	82%	133	-	9%
Jun-06	4,069	1,519	63%	2,550	848	1,702	1,581	137	57%	1,444	61	546	402	1,009	70%	182	-	253	82%	76	-	6%
Jul-06	3,776	1,385	63%	2,391	755	1,636	1,613	130	62%	1,483	61	559	386	1,006	68%	203	-	274	82%	124	-	9%
Aug-06	3,064	917	70%	2,147	688	1,459	1,419	132	60%	1,287	53	484	334	871	68%	129	-	287	78%	114	-	9%
Sep-06	2,785	883	68%	1,902	604	1,298	1,275	98	62%	1,177	50	426	345	821	70%	140	-	216	82%	103	-	7%
Oct-06	3,091	1,092	65%	1,999	817	1,182	1,162	130	52%	1,032	49	376	324	749	73%	135	-	148	86%	131	-	11%
Nov-06	3,470	1,340	61%	2,130	920	1,210	1,186	141	49%	1,045	42	360	346	748	72%	137	-	160	85%	54	-	4%
Dec-06	3,122	1,002	68%	2,120	888	1,232	1,124	115	48%	1,009	40	360	315	715	71%	117	-	177	82%	97	-	7%



City of West Hollywood
Performance Report
May 2014

	<u>Total</u> <u>Events</u>	<u>Non</u> <u>Violations</u>	<u>Percent</u> <u>Citable</u>	<u>Potential</u> <u>Violations</u>	<u>Initial</u> <u>Rejects</u>	<u>Actual</u> <u>Violations</u>	<u>N/A</u> <u>Returns</u>	<u>Police/</u> <u>Client</u> <u>Rejected</u>	<u>Issuance</u> <u>Rate</u>	<u>Citations</u> <u>Issued</u>	<u>Fine</u> <u>Paid</u>	<u>Bail</u> <u>Forfeiture</u>	<u>Traffic</u> <u>School</u>	<u>Sum of</u> <u>Paid</u>	<u>Pay</u> <u>Rate</u>	<u>Closed</u> <u>No Pay</u>	<u>Cancel</u> <u>Nixie</u>	<u>Pending</u>	<u>Closure</u> <u>Rate</u>	<u>Court</u> <u>Packs</u>	<u>TbD</u> <u>Packs</u>	<u>Contest</u> <u>Rate</u>
Jan-07	3,119	937	70%	2,182	894	1,288	1,166	90	49%	1,076	26	335	321	682	63%	241	-	153	86%	89	-	6%
Feb-07	2,874	913	68%	1,961	801	1,160	1,034	77	49%	957	40	343	283	666	70%	128	-	163	83%	86	-	7%
Mar-07	3,309	1,144	65%	2,165	817	1,348	1,178	99	50%	1,079	43	390	314	747	69%	166	-	166	85%	84	-	7%
Apr-07	3,145	1,093	65%	2,052	862	1,190	1,064	88	48%	976	44	371	266	681	70%	103	-	192	80%	89	-	9%
May-07	3,368	1,267	62%	2,101	918	1,183	1,052	64	47%	988	44	366	294	704	71%	115	-	169	83%	75	-	7%
Jun-07	3,364	1,094	67%	2,270	916	1,354	1,170	75	48%	1,095	58	427	283	768	70%	101	-	226	79%	79	-	8%
Jul-07	3,088	1,121	64%	1,967	789	1,178	1,019	46	49%	973	57	345	226	628	65%	127	-	218	78%	57	-	5%
Aug-07	2,790	954	66%	1,836	748	1,088	936	28	49%	908	45	303	225	573	63%	135	-	200	78%	73	-	8%
Sep-07	3,004	1,110	63%	1,894	870	1,024	887	30	45%	857	33	272	214	519	61%	65	-	273	68%	68	-	6%
Oct-07	2,879	1,079	63%	1,800	784	1,016	898	29	48%	869	41	297	221	559	64%	64	-	246	72%	37	-	4%
Nov-07	2,795	972	65%	1,823	688	1,135	1,004	41	53%	963	40	285	249	574	60%	94	-	295	69%	63	-	6%
Dec-07	2,748	977	64%	1,771	696	1,075	959	55	51%	904	40	296	266	602	67%	80	-	222	75%	63	-	6%
Jan-08	2,635	959	64%	1,676	676	1,000	886	36	51%	850	43	328	269	640	75%	83	-	127	85%	85	-	9%
Feb-08	2,490	908	64%	1,582	749	833	718	5	45%	713	38	266	230	534	75%	64	-	115	84%	103	-	11%
Mar-08	2,850	929	67%	1,921	930	991	894	7	46%	887	29	325	301	655	74%	104	-	128	86%	45	-	5%
Apr-08	2,896	1,016	65%	1,880	971	909	803	5	42%	798	34	299	215	548	69%	82	-	168	79%	98	-	11%
May-08	2,995	1,095	63%	1,900	913	987	852	5	45%	847	29	299	246	574	68%	96	-	177	79%	81	-	8%
Jun-08	2,834	965	66%	1,869	852	1,017	914	8	48%	906	31	324	254	609	67%	125	-	172	81%	67	-	7%
Jul-08	2,729	901	67%	1,828	807	1,021	933	7	51%	926	41	296	256	593	64%	127	-	206	78%	68	-	8%
Aug-08	2,264	618	73%	1,646	545	1,101	1,009	10	61%	999	39	381	263	683	68%	126	-	190	81%	64	-	9%
Sep-08	2,495	765	69%	1,730	667	1,063	947	6	54%	941	35	342	261	638	68%	97	-	206	78%	63	-	7%
Oct-08	2,847	1,023	64%	1,824	701	1,123	1,008	13	55%	995	43	349	286	678	68%	118	-	199	80%	84	-	11%
Nov-08	2,694	950	65%	1,744	616	1,128	1,000	8	57%	992	44	358	306	708	71%	89	-	195	80%	58	-	7%
Dec-08	2,754	921	67%	1,833	787	1,046	936	17	50%	919	40	324	277	641	70%	78	-	200	78%	64	-	7%
Jan-09	2,521	894	65%	1,627	597	1,030	915	11	56%	904	34	316	264	614	68%	97	-	193	79%	88	-	10%
Feb-09	2,292	807	65%	1,485	583	902	811	5	54%	806	42	275	225	542	67%	115	-	149	82%	73	-	7%
Mar-09	2,547	895	65%	1,652	661	991	896	6	54%	890	51	300	245	596	67%	120	-	174	80%	96	-	10%
Apr-09	2,457	835	66%	1,622	697	925	812	8	50%	804	40	270	224	534	66%	128	-	142	82%	110	-	11%
May-09	2,655	903	66%	1,752	693	1,059	955	34	53%	921	54	321	267	642	70%	126	-	153	83%	90	-	9%
Jun-09	2,815	1,043	63%	1,772	683	1,089	980	18	54%	962	44	315	275	634	66%	135	-	193	80%	65	-	7%
Jul-09	5,699	3,778	34%	1,921	768	1,153	1,048	19	54%	1,029	51	362	279	692	67%	117	-	220	79%	57	-	6%
Aug-09	5,250	3,442	34%	1,808	716	1,092	992	10	54%	982	43	307	266	616	63%	180	-	186	81%	67	-	8%
Sep-09	4,663	3,263	30%	1,400	418	982	879	4	63%	875	42	324	245	611	70%	107	-	157	82%	62	-	7%
Oct-09	5,176	3,375	35%	1,801	701	1,100	982	12	54%	970	47	300	251	598	62%	194	-	178	82%	71	-	9%
Nov-09	4,685	3,033	35%	1,652	671	981	885	31	52%	854	35	299	241	575	67%	119	-	160	81%	44	-	5%
Dec-09	5,024	3,633	28%	1,391	570	821	739	15	52%	724	32	248	206	486	67%	114	-	124	83%	110	-	11%
Jan-10	5,401	4,068	25%	1,333	492	841	744	20	54%	724	32	231	217	480	66%	100	-	137	80%	26	-	3%
Feb-10	5,714	4,366	24%	1,348	528	820	683	14	50%	669	28	234	180	442	66%	80	-	141	78%	70	-	7%
Mar-10	5,919	4,388	26%	1,531	670	861	764	22	48%	742	30	261	214	505	68%	93	-	133	81%	83	-	9%
Apr-10	7,093	5,453	23%	1,640	746	894	775	14	46%	761	24	260	187	471	62%	111	-	161	76%	73	-	8%
May-10	5,863	4,149	29%	1,714	678	1,036	942	23	54%	919	34	297	262	593	65%	91	-	193	74%	64	-	7%
Jun-10	5,251	3,457	34%	1,794	774	1,020	929	19	51%	910	29	311	235	575	63%	112	-	172	75%	48	-	7%
Jul-10	4,809	3,053	37%	1,756	769	987	891	11	50%	880	46	278	218	542	62%	81	-	192	71%	108	-	15%
Aug-10	4,662	2,930	37%	1,732	692	1,040	952	17	54%	935	37	310	198	545	58%	95	-	219	68%	41	-	6%
Sep-10	4,451	2,945	34%	1,506	622	884	777	7	51%	770	31	249	191	471	61%	47	-	184	67%	82	-	11%
Oct-10	4,319	2,874	33%	1,445	577	868	780	40	51%	740	29	223	189	441	60%	43	-	189	65%	57	-	7%
Nov-10	4,287	2,766	35%	1,521	565	869	791	71	52%	798	35	249	186	470	59%	7	-	223	60%	53	-	6%
Dec-10	3,873	2,396	38%	1,477	826	651	586	36	37%	550	27	166	125	318	58%	6	-	136	59%	90	-	10%
Jan-11	3,669	2,521	31%	1,148	610	538	491	8	42%	483	17	149	118	284	59%	76	-	123	75%	77	-	9%



City of West Hollywood
Performance Report
May 2014

	<u>Total</u> <u>Events</u>	<u>Non</u> <u>Violations</u>	<u>Percent</u> <u>Citable</u>	<u>Potential</u> <u>Violations</u>	<u>Initial</u> <u>Rejects</u>	<u>Actual</u> <u>Violations</u>	<u>N/A</u> <u>Returns</u>	<u>Police/</u> <u>Client</u> <u>Rejected</u>	<u>Issuance</u> <u>Rate</u>	<u>Citations</u> <u>Issued</u>	<u>Fine</u> <u>Paid</u>	<u>Bail</u> <u>Forfeiture</u>	<u>Traffic</u> <u>School</u>	<u>Sum of</u> <u>Paid</u>	<u>Pay</u> <u>Rate</u>	<u>Closed</u> <u>No Pay</u>	<u>Cancel</u> <u>Nixie</u>	<u>Pending</u>	<u>Closure</u> <u>Rate</u>	<u>Court</u> <u>Packs</u>	<u>TbD</u> <u>Packs</u>	<u>Contest</u> <u>Rate</u>
Feb-11	3,783	2,473	35%	1,310	697	613	557	11	42%	546	19	167	120	306	56%	92	-	148	73%	65	-	7%
Mar-11	4,531	2,930	35%	1,601	679	922	814	56	47%	758	43	245	162	450	59%	109	-	199	74%	62	-	8%
Apr-11	4,141	2,832	32%	1,309	450	859	756	4	57%	752	28	221	142	391	52%	133	-	228	70%	80	-	11%
May-11	4,972	3,122	37%	1,850	1,034	816	733	6	39%	727	31	202	134	367	50%	129	-	231	68%	73	-	9%
Jun-11	4,237	2,674	37%	1,563	715	848	772	3	49%	769	29	225	93	347	45%	138	-	284	63%	69	-	13%
Jul-11	4,491	2,758	39%	1,733	690	1,043	900	10	51%	890	30	256	103	389	44%	143	-	358	60%	103	-	21%
Aug-11	5,035	3,178	37%	1,857	735	1,122	1,003	7	54%	996	35	258	113	406	41%	201	-	389	61%	73	-	13%
Sep-11	4,383	2,596	41%	1,787	716	1,071	947	6	53%	941	34	260	113	407	43%	163	-	371	61%	111	-	15%
Oct-11	4,447	2,447	45%	2,000	640	1,360	1,182	30	58%	1,152	62	322	150	534	46%	182	-	436	62%	52	-	7%
Nov-11	4,450	2,563	42%	1,887	616	1,271	1,148	26	59%	1,122	41	318	161	520	46%	198	-	404	64%	77	-	11%
Dec-11	4,277	2,419	43%	1,858	516	1,342	1,156	29	61%	1,127	44	312	158	514	46%	151	-	462	59%	84	-	11%
Jan-12	4,352	2,421	44%	1,931	516	1,415	1,198	44	60%	1,154	38	321	151	510	44%	155	-	489	58%	103	-	12%
Feb-12	4,258	2,352	45%	1,906	588	1,318	1,120	48	56%	1,072	45	281	126	452	42%	169	-	451	58%	57	-	6%
Mar-12	4,807	2,581	46%	2,226	777	1,449	1,280	33	56%	1,247	59	326	161	546	44%	168	-	533	57%	60	-	6%
Apr-12	4,920	2,703	45%	2,217	822	1,395	1,246	35	55%	1,211	40	293	163	496	41%	154	-	561	54%	89	-	8%
May-12	5,216	2,789	47%	2,427	850	1,577	1,417	65	56%	1,352	48	282	201	531	39%	190	-	631	53%	84	-	7%
Jun-12	3,227	1,228	62%	1,999	386	1,613	1,452	73	69%	1,379	50	310	166	526	38%	185	-	668	52%	95	-	8%
Jul-12	4,806	2,412	50%	2,394	862	1,532	1,381	79	54%	1,302	52	296	168	516	40%	186	-	600	54%	59	-	5%
Aug-12	5,237	2,698	48%	2,539	837	1,702	1,489	67	56%	1,422	43	271	184	498	35%	215	-	709	50%	54	-	5%
Sep-12	5,087	2,704	47%	2,383	726	1,657	1,463	71	58%	1,392	43	254	180	477	34%	232	-	683	51%	134	-	11%
Oct-12	4,567	2,410	47%	2,157	649	1,508	1,320	51	59%	1,269	24	302	154	480	38%	215	-	574	55%	114	-	9%
Nov-12	3,983	2,247	44%	1,736	474	1,262	1,056	36	59%	1,020	19	245	109	373	37%	153	-	494	52%	71	-	5%
Dec-12	3,854	2,283	41%	1,571	483	1,088	899	31	55%	868	18	201	92	311	36%	141	-	416	52%	98	-	7%
Jan-13	4,038	2,466	39%	1,572	475	1,097	962	28	59%	934	27	169	119	315	34%	130	-	489	48%	67	32	8%
Feb-13	3,881	2,191	44%	1,690	540	1,150	1,001	26	58%	975	32	197	146	375	38%	142	-	458	53%	65	35	7%
Mar-13	4,253	2,244	47%	2,009	758	1,251	1,111	30	54%	1,081	41	251	125	417	39%	184	-	480	56%	85	34	9%
Apr-13	3,818	2,112	45%	1,706	569	1,137	969	27	55%	942	35	205	133	373	40%	121	-	448	52%	101	18	9%
May-13	4,388	2,323	47%	2,065	791	1,274	1,092	50	50%	1,042	36	210	152	398	38%	151	-	493	53%	86	18	10%
Jun-13	4,390	2,257	49%	2,133	960	1,173	1,013	36	46%	977	20	191	126	337	34%	146	-	494	49%	93	24	13%
Jul-13	4,657	2,440	48%	2,217	852	1,365	1,151	39	50%	1,112	25	213	126	364	33%	279	-	469	58%	131	37	18%
Aug-13	4,657	2,440	48%	2,217	853	1,364	1,150	39	50%	1,111	13	225	135	373	34%	152	-	586	47%	111	26	14%
Sep-13	4,371	2,304	47%	2,067	823	1,244	1,026	39	48%	987	8	170	127	305	31%	121	-	561	43%	108	30	13%
Oct-13	4,403	2,360	46%	2,043	727	1,316	1,049	38	49%	1,011	5	181	106	292	29%	119	-	600	41%	142	40	19%
Nov-13	4,424	2,444	45%	1,980	721	1,259	1,086	39	53%	1,047	3	149	84	236	23%	72	-	739	29%	52	15	7%
Dec-13	4,014	2,259	44%	1,755	587	1,168	934	24	52%	910	-	105	58	163	18%	34	-	713	22%	92	7	11%
Jan-14	3,634	1,979	46%	1,655	631	1,024	749	50	42%	699	-	88	34	122	17%	3	-	574	18%	68	26	10%
Feb-14	3,179	1,695	47%	1,484	585	899	758	58	47%	700	-	33	11	44	6%	-	-	656	6%	78	19	10%
Mar-14	4,033	2,355	42%	1,678	682	996	861	80	47%	781	-	10	-	10	1%	1	-	770	1%	55	13	7%
Apr-14	4,101	2,334	43%	1,767	780	987	855	77	44%	778	-	-	-	-	0%	-	-	778	0%	110	1	12%
May-14	3,932	2,166	45%	1,766	785	981	864	72	45%	792	-	-	-	-	0%	-	-	792	0%	74	13	8%
Total	718,083	336,590	53%	381,493	149,130	232,363	216,306	7,272	55%	209,034	7,851	70,424	57,700	135,975	66%	23,947	347	48,166	78%	8,257	388	9%

* Total Pay and Closure Rates omit the last 4 months to allow for court processing

** The Contest Rate assumes a 6 month lag from the violation date and is only available from January 2006 to present