

City of West Hollywood

Photo Enforcement Program



Monthly Report



December 2013



Prepared by: Xerox State and Local Solutions
Confidential



Table of Contents

Page Title	Page
<i>Executive Summary</i>	2
<i>Approach Summary Report, All Locations</i>	3
<i>Approach Summary Report, Location 3103: E/B Beverly @ Robertson</i>	4
<i>Approach Summary Report, Location 3104: W/B Beverly @ Robertson</i>	5
<i>Approach Summary Report, Location 3111: N/B Fairfax @ Fountain</i>	6
<i>Approach Summary Report, Location 3112: S/B Fairfax @ Fountain</i>	7
<i>Approach Summary Report, Location 3113: E/B Fountain @ Fairfax</i>	8
<i>Approach Summary Report, Location 3121: N/B Crescent Heights @ Fountain</i>	9
<i>Approach Summary Report, Location 3122: S/B Crescent Heights @ Fountain</i>	10
<i>Approach Summary Report, Location 3123: E/B Fountain @ Crescent Heights</i>	11
<i>Approach Summary Report, Location 3124: W/B Fountain @ Crescent Heights</i>	12
<i>Approach Summary Report, Location 3131: N/B La Cienega @ Melrose</i>	13
<i>Approach Summary Report, Location 3132: S/B La Cienega @ Melrose</i>	14
<i>Approach Summary Report, Location 3133: E/B Melrose @ La Cienega</i>	15
<i>Approach Summary Report, Location 3141: N/B La Brea @ Fountain</i>	16
<i>Approach Summary Report, Location 3142: S/B La Brea @ Fountain</i>	17
<i>Approach Summary Report, Location 3143: E/B Sunset @ La Cienega</i>	18
<i>Approach Summary Report, Location 3144: W/B Sunset @ La Cienega</i>	19
<i>Approach Summary Report, Location 3151: N/B Fairfax @ Santa Monica</i>	20
<i>Approach Summary Report, Location 3152: S/B Fairfax @ Santa Monica</i>	21
<i>Approach Summary Report, Location 3153: E/B Santa Monica @ Fairfax</i>	22
<i>Approach Summary Report, Location 3154: W/B Santa Monica @ Fairfax</i>	23
<i>Approach Summary Report, Location 3161: N/B La Brea @ Santa Monica</i>	24
<i>Approach Summary Report, Location 3162: S/B La Brea @ Santa Monica</i>	25
<i>Approach Summary Report, Location 3163: E/B Santa Monica @ La Brea</i>	26
<i>Approach Summary Report, Location 3164: W/B Santa Monica @ La Brea</i>	27
<i>Customer Service Report</i>	28
<i>Monthly Citation Yield Report</i>	29
<i>Camera Rotation Log</i>	30
<i>Performance Report</i>	31
<i>Disposition Summary Report</i>	32

Executive Summary

In December 2013, the photo enforcement project for the City of West Hollywood captured 4,014 events. The project recorded 1,755 violations and 2,259 non-violations. The Sheriff's Department issued 910 citations reflecting a 52% issuance rate and a controllable issuance rate of 97%.

In December there were the following controllable non-issued violations:

- 18 identified as dark interior (no pattern, usual issues of sun glare)
- 4 identified as Framing of Plate (no pattern, at 3 separate approaches)
- 1 identified as Framing of Car (3144 on 12/8, isolated)
- 6 identified as Equipment Malfunction (at 3122 between 12/12 and 12/15: blank data box)
- 2 identified as Exposure (at 3103 and 3104. No flash. Isolated)
- 1 identified as Expired (3143 on 12/21. Data error not corrected in time)

In order to assist Deputy Porche with the issue he is experiencing at the Santa Monica court (cases being dismissed at the time of arraignment by the presiding Judge there) we have been providing him with the raw court disposition files. In addition, we have been attempting to reach out to the court administrators to alert them of the situation. The normally scheduled red light meeting with Metro court in December was canceled and has not been re-scheduled. In addition, the court has not yet scheduled the normal meeting for Feb. We are continuing to follow up with them on these items.

In the News - Photo Enforcement Around the Country

Red Light Districts: What You Should Know About WeHo's Traffic Light Cameras

Mon, Jan 27, 2014

By Stevie St. John

www.weherville.com

No one likes a traffic ticket, but drivers especially see red when it comes to citations issued on the basis of red-light cameras. Maybe it's the feeling that Big Brother is keeping tabs on drivers using technology instead of old-fashioned police patrols. The jaw-dropping amount of the tickets—nearly \$500—surely doesn't help matters. (Why so much? In addition to the base fine, the tickets are rife with added-on fees.)

Although the City of Los Angeles stopped using red light cameras in 2011, the cameras are still used in other area cities, including West Hollywood, Culver City and Beverly Hills.

Opponents of the cameras view the system as abusive and suggest that many ticketed drivers did not run a red light deliberately and merely made an error in judgment. Zenon Porche, the Sheriff's Department deputy who oversees the system in West Hollywood, says that it is fair and that it has significantly reducing the number of fatal crashes in the city.

Some of WEHerville.com's readers have reached out with questions about the program. Here is what we learned that you need to know about red light cameras in West Hollywood:

Where are the cameras?

In West Hollywood, there are red light cameras at eight intersections:

- Fountain Avenue at Crescent Heights Boulevard, at Fairfax Avenue and at La Brea Avenue
- La Cienega Boulevard at Sunset Boulevard and at Melrose Avenue
- Santa Monica Boulevard at Fairfax Avenue and at La Brea Avenue
- Beverly Boulevard at Robertson Boulevard

Why so many cameras in such a city of only 1.89 square miles?

According to Porche, accident rates determine how many cameras are needed and where they are placed. "West Hollywood is small, but it's very congested," he said.

What can I be ticketed for?

If you're caught on a red light camera in West Hollywood, you can get a ticket only for going straight through a red light. Other cities cite drivers for making turns through red lights, but Porche said that, statistically speaking, tickets for turning violations aren't justified in WeHo.

How many tickets are being issued, and who is being cited?

In 2013, the total number of citations countywide was 11,399, according to information provided by the Sheriff's Department. Only 465 of those citations were issued to West Hollywood residents. Porche noted that West Hollywood residents are more likely to know where the cameras are and thus avoid being snapped running a red light.

Do I really have to acknowledge and pay this ticket?

Well, err, it's hard to be definite, and it depends on what you mean by "have to." But from a strictly legal standpoint, the answer is "yes."

“You have an obligation to respond – end of story,” said Porche, who noted that an arrest warrant can be issued if you don’t respond. “We can come after you ... Make no mistake about it, it’s a valid ticket, and people are legally obligated to respond.”

(Note: Responding can mean acknowledging and paying the ticket OR explaining and verifying that you are not the person who was driving the car when the violation occurred.)

From a purely practical standpoint, many reports (some going so far as to call payments “voluntary”) suggest that ducking tickets hasn’t resulted in much in the way of consequences. The LA Weekly, for example, reported that a Los Angeles City Council member conceded that there were no consequences to not paying before LA ended the red light ticket program. Ignoring a ticket can lead to a call from a collection agency, but that’s not likely to affect your credit score, your driver’s license or car insurance rate. However, it could come up if you end up in court on another matter.

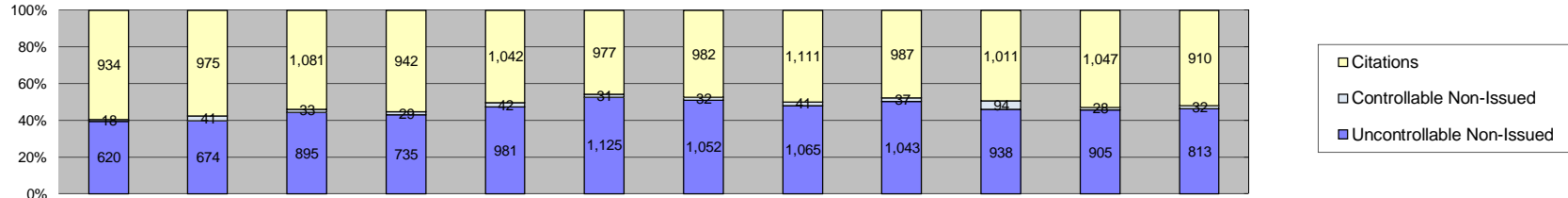
For his part, Porche said he has talked to the courts about stepping up enforcement of red light tickets. Ignoring the ticket may be the equivalent of going through an intersection on a borderline yellow. Perhaps you’ll make it through unscathed, or perhaps you’ll be in for an unpleasant surprise later.

Red Light Resources

- The Sheriff’s Department provides information, including videos with Deputy Zenon Porche, online.
- Jay Beeber, the libertarian activist who led the campaign to get Los Angeles to drop the red light camera program, makes his case against the lights on his website, SaferStreets L.A.
- Highway Robbery is another website that offers both arguments against the program and advice on what to do if you get ticketed.



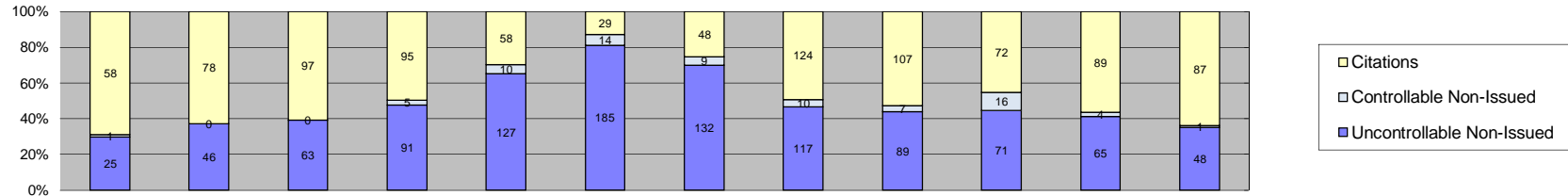
City of West Hollywood Approach Summary Report All Locations



Events	Jan-13	Feb-13	Mar-13	Apr-13	May-13	Jun-13	Jul-13	Aug-13	Sep-13	Oct-13	Nov-13	Dec-13	Year to Date Average		2012 Average	
													Quantity	%	Quantity	%
Non-Violations	2,466	2,191	2,244	2,112	2,323	2,257	2,557	2,440	2,304	2,360	2,444	2,259	2,330	55%	2,596	53%
Violations	1,572	1,690	2,009	1,706	2,065	2,133	2,066	2,217	2,067	2,043	1,980	1,755	1,942	45%	2,275	47%
Total:	4,038	3,881	4,253	3,818	4,388	4,390	4,623	4,657	4,371	4,403	4,424	4,014	4,272	100%	4,871	100%
Violations																
Uncontrollable Non-Issued	620	674	895	735	981	1,125	1,052	1,065	1,043	938	905	813	904	47%	955	41%
Controllable Non-Issued	18	41	33	29	42	31	32	41	37	94	28	32	38	2%	78	3%
Citations	934	975	1,081	942	1,042	977	982	1,111	987	1,011	1,047	910	1,000	51%	1,285	55%
Total:	1,572	1,690	2,009	1,706	2,065	2,133	2,066	2,217	2,067	2,043	1,980	1,755	1,942	100%	2,318	100%
Non-Violations																
Rear Axle Violation	12	28	11	12	12	8	14	9	23	16	6	11	14	1%	36	1%
Emergency Vehicle	87	68	74	57	88	73	83	69	85	107	106	84	82	4%	127	5%
Right Turn	948	871	1,006	911	1,194	1,104	1,072	1,238	1,297	1,362	1,248	1,296	1,129	48%	1,096	42%
No Violation Occurred	1,419	1,224	1,153	1,132	1,029	1,072	1,388	1,124	899	875	1,084	868	1,106	47%	1,371	52%
Total:	2,466	2,191	2,244	2,112	2,323	2,257	2,557	2,440	2,304	2,360	2,444	2,259	2,330	100%	2,629	100%
Uncontrollable Non-Issued Violations																
No Plate	309	317	392	297	395	389	403	422	409	400	437	354	377	41%	408	37%
Out of State Plate	4	34	24	5	9	5	10	28	5	14	30	11	15	2%	72	6%
Glare on Plate	4	7	5	8	6	59	42	44	25	28	6	4	20	2%	32	3%
Illegible Plate	30	22	23	14	16	55	48	39	61	51	72	75	42	5%	45	4%
Plate Obstructed	18	17	25	10	15	30	17	29	15	19	21	16	19	2%	40	4%
Windshield Glare	49	57	176	147	251	321	248	193	132	115	60	49	150	16%	109	10%
Driver Obstructed	12	8	23	17	13	23	15	27	50	39	35	21	24	3%	34	3%
Car Obstructed	29	35	57	36	44	46	35	26	20	27	28	23	34	4%	43	4%
No DMV Match Found	135	149	139	167	181	160	198	212	217	203	167	178	176	19%	183	16%
LASD Expired	0	0	1	1	0	0	0	2	1	1	5	55	9	1%	47	4%
LASD Return	28	26	30	27	50	36	34	39	39	38	39	24	34	4%	64	6%
Yellow Interval Not Met	0	0	0	0	0	0	0	0	0	0	0	0	0	0%	12	1%
Other	2	2	0	6	1	1	2	4	69	3	5	3	9	1%	26	2%
Total:	620	674	895	735	981	1,125	1,052	1,065	1,043	938	905	813	909	100%	1,115	100%
Controllable Non-Issued Violations																
Framing of Plate	0	1	1	0	1	0	0	0	0	1	3	4	2	3%	8	4%
Focus / Clarity of Plate	0	1	0	0	2	0	0	2	0	0	0	0	2	3%	13	6%
Dark Interior	15	14	27	20	28	24	18	29	21	17	17	18	21	35%	28	13%
Framing of Driver	0	0	0	0	0	0	0	0	0	0	0	0	0	0%	3	2%
Focus / Clarity of Driver	1	0	2	1	4	3	0	2	0	4	0	0	2	4%	6	3%
Framing of Car	0	14	1	0	0	0	0	0	1	0	1	1	4	6%	11	5%
Operator / Data Error	0	3	0	8	0	0	0	0	7	1	3	0	4	7%	68	31%
Exposure	0	0	0	0	1	3	2	2	4	2	3	2	2	4%	8	4%
Equipment Malfunction	2	8	2	0	5	1	12	6	4	6	0	6	5	9%	32	15%
Xerox Expired	0	0	0	0	1	0	0	0	0	63	1	1	17	28%	41	19%
Total:	18	41	33	29	42	31	32	41	37	94	28	32	59	100%	217	100%
Summary Metrics													Year to Date Average		2012 Average	
Daily Ave Vehicle Passes	256,668	250,934	232,519	282,536	271,894	263,405	293,474	270,420	280,805	264,999	254,653	250,837	264,429		320,929	
Ave Issued Speed	33	32	32	32	33	32	31	31	33	32	32	33	32		32	
Ave Issued Red Seconds	1.0	1.0	0.9	0.7	0.9	0.6	0.7	0.8	0.8	0.7	0.9	0.7	0.8		0.9	
Citation / Violation Iss Rate	59%	58%	54%	55%	50%	46%	48%	50%	48%	49%	53%	52%	52%		52%	
Controllable Iss Rate	98%	96%	97%	97%	96%	97%	97%	96%	96%	91%	97%	97%	96%		96%	



City of West Hollywood Approach Summary Report Location 3103: E/B Beverly @ Robertson (GLD-4 Camera System)

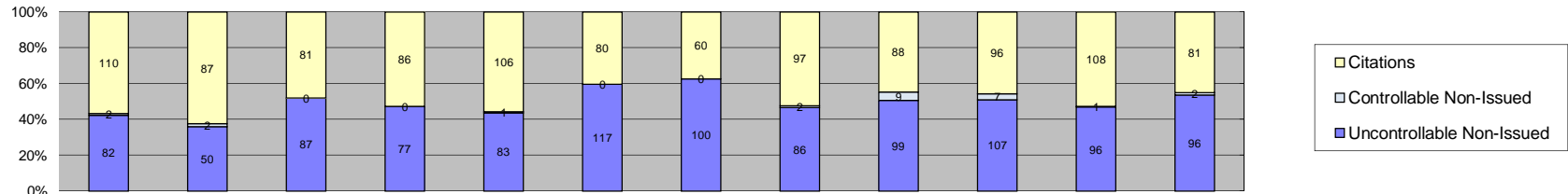


Events	Jan-13	Feb-13	Mar-13	Apr-13	May-13	Jun-13	Jul-13	Aug-13	Sep-13	Oct-13	Nov-13	Dec-13	Year to Date Average		2012 Average	
													Quantity	%	Quantity	%
Non-Violations	35	32	40	32	58	52	58	60	47	42	45	37	45	21%	37	21%
Violations	84	124	160	191	195	228	189	251	203	159	158	136	173	79%	139	79%
Total:	119	156	200	223	253	280	247	311	250	201	203	173	218	100%	176	100%
Violations																
Uncontrollable Non-Issued	25	46	63	91	127	185	132	117	89	71	65	48	88	51%	53	38%
Controllable Non-Issued	1	0	0	5	10	14	9	10	7	16	4	1	8	4%	3	2%
Citations	58	78	97	95	58	29	48	124	107	72	89	87	79	45%	84	60%
Total:	84	124	160	191	195	228	189	251	203	159	158	136	174	100%	140	100%
Non-Violations																
Rear Axle Violation	1	1	0	1	0	0	0	0	1	1	0	1	1	2%	1	3%
Emergency Vehicle	4	3	7	1	7	7	7	10	9	13	16	11	8	17%	8	20%
Right Turn	2	5	0	0	2	2	3	1	2	1	3	1	2	5%	1	4%
No Violation Occurred	28	23	33	30	49	43	48	49	35	27	26	24	35	76%	29	73%
Total:	35	32	40	32	58	52	58	60	47	42	45	37	46	100%	39	100%
Uncontrollable Non-Issued Violations																
No Plate	13	21	31	39	31	33	27	45	33	35	24	21	29	31%	22	37%
Out of State Plate	0	2	0	1	1	1	0	2	1	2	1	0	1	1%	3	5%
Glare on Plate	0	0	0	0	0	0	3	1	1	0	0	0	2	2%	1	2%
Illegible Plate	0	0	0	0	2	10	5	1	1	0	0	1	3	4%	1	2%
Plate Obstructed	0	2	1	1	3	0	0	5	0	0	2	0	2	2%	2	3%
Windshield Glare	2	3	6	19	68	126	77	26	9	7	2	1	29	30%	6	10%
Driver Obstructed	1	2	8	7	3	2	4	8	13	13	10	4	6	7%	5	8%
Car Obstructed	2	1	1	3	5	2	1	2	1	1	3	2	2	2%	2	3%
No DMV Match Found	4	12	10	13	4	1	7	18	21	4	15	12	10	11%	9	14%
LASD Expired	0	0	0	0	0	0	0	0	0	0	0	1	1	1%	1	2%
LASD Return	3	3	6	7	10	10	8	9	9	9	8	6	7	8%	8	12%
Yellow Interval Not Met	0	0	0	0	0	0	0	0	0	0	0	0	0	0%	0	0%
Other	0	0	0	1	0	0	0	0	0	0	0	0	1	1%	1	2%
Total:	25	46	63	91	127	185	132	117	89	71	65	48	95	100%	60	100%
Controllable Non-Issued Violations																
Framing of Plate	0	0	0	0	0	0	0	0	0	0	0	0	0	0%	0	0%
Focus / Clarity of Plate	0	0	0	0	2	0	0	0	0	0	0	0	2	8%	0	0%
Dark Interior	1	0	0	4	4	11	9	7	4	3	3	0	5	21%	1	6%
Framing of Driver	0	0	0	0	0	0	0	0	0	0	0	0	0	0%	0	0%
Focus / Clarity of Driver	0	0	0	0	4	3	0	0	0	1	0	0	3	11%	1	6%
Framing of Car	0	0	0	0	0	0	0	0	0	0	0	0	0	0%	0	0%
Operator / Data Error	0	0	0	1	0	0	0	0	0	0	1	0	1	4%	6	38%
Exposure	0	0	0	0	0	0	0	1	3	0	0	1	2	7%	0	0%
Equipment Malfunction	0	0	0	0	0	0	0	2	0	3	0	0	3	10%	0	0%
Xerox Expired	0	0	0	0	0	0	0	0	0	9	0	0	9	38%	8	50%
Total:	1	0	0	5	10	14	9	10	7	16	4	1	24	100%	16	100%
Summary Metrics													Year to Date Average		2012 Average	
Daily Ave Vehicle Passes	10,727	10,693	10,210	11,833	11,888	11,417	12,440	12,211	11,652	11,780	10,342	11,497	11,391		10,782	
Ave Issued Speed	31	29	29	30	29	29	29	29	29	30	30	30	30		30	
Ave Issued Red Seconds	1.0	0.9	0.8	0.9	0.8	0.9	0.7	0.8	1.1	0.6	0.5	0.8	1		0.9	
Citation / Violation Iss Rate	69%	63%	61%	50%	30%	13%	25%	49%	53%	45%	56%	64%	48%		60%	
Controllable Iss Rate	98%	100%	100%	95%	85%	67%	84%	93%	94%	82%	96%	99%	91%		97%	



City of West Hollywood Approach Summary Report

Location 3104: W/B Beverly @ Robertson (GLD-4 Camera System)

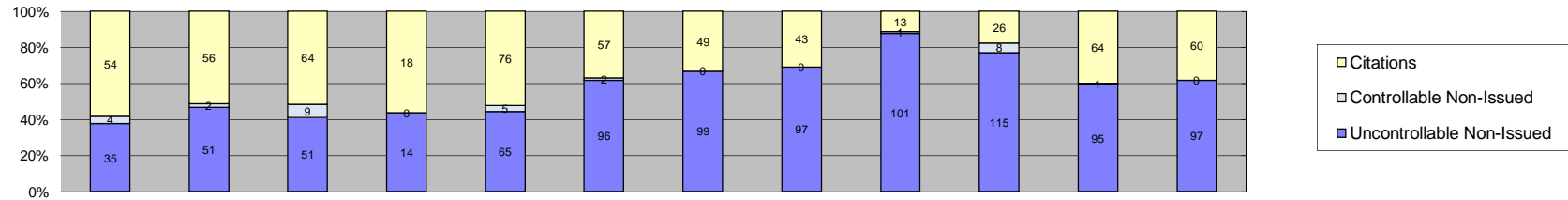


Events	Jan-13	Feb-13	Mar-13	Apr-13	May-13	Jun-13	Jul-13	Aug-13	Sep-13	Oct-13	Nov-13	Dec-13	Year to Date Average		2012 Average	
													Quantity	%	Quantity	%
Non-Violations	7	16	19	12	6	6	7	14	8	16	13	10	11	6%	13	8%
Violations	194	139	168	163	190	197	160	185	196	210	205	179	182	94%	152	92%
Total:	201	155	187	175	196	203	167	199	204	226	218	189	193	100%	165	100%
Violations																
Uncontrollable Non-Issued	82	50	87	77	83	117	100	86	99	107	96	96	90	49%	68	45%
Controllable Non-Issued	2	2	0	0	1	0	0	2	9	7	1	2	3	2%	3	2%
Citations	110	87	81	86	106	80	60	97	88	96	108	81	90	49%	82	54%
Total:	194	139	168	163	190	197	160	185	196	210	205	179	183	100%	152	100%
Non-Violations																
Rear Axle Violation	3	9	3	1	1	1	3	1	3	4	1	3	3	22%	3	19%
Emergency Vehicle	1	2	2	0	1	2	0	1	0	4	0	1	2	14%	2	17%
Right Turn	2	2	1	0	1	0	0	1	0	0	2	1	1	12%	1	9%
No Violation Occurred	1	3	13	11	3	3	4	11	5	8	10	5	6	52%	8	55%
Total:	7	16	19	12	6	6	7	14	8	16	13	10	12	100%	14	100%
Uncontrollable Non-Issued Violations																
No Plate	43	13	28	30	32	36	32	26	33	33	39	37	32	34%	22	29%
Out of State Plate	1	3	2	0	2	1	3	1	1	3	3	1	2	2%	3	5%
Glare on Plate	0	0	1	3	2	15	8	3	1	1	0	2	4	4%	3	5%
Illegible Plate	6	3	2	4	3	17	16	10	6	3	9	11	8	8%	4	6%
Plate Obstructed	2	1	0	0	1	4	1	1	1	0	3	1	2	2%	2	2%
Windshield Glare	5	8	18	10	15	18	11	16	20	11	6	7	12	13%	8	11%
Driver Obstructed	6	3	9	5	5	8	5	8	14	14	13	4	8	8%	6	8%
Car Obstructed	2	1	3	2	1	2	0	0	1	4	1	0	2	2%	2	2%
No DMV Match Found	10	14	18	15	16	13	15	15	14	25	11	22	16	17%	12	17%
LASD Expired	0	0	0	1	0	0	0	1	0	0	0	5	2	2%	3	3%
LASD Return	7	4	6	7	6	3	9	5	8	13	11	6	7	8%	9	12%
Yellow Interval Not Met	0	0	0	0	0	0	0	0	0	0	0	0	0	0%	0	0%
Other	0	0	0	0	0	0	0	0	0	0	0	0	0	0%	1	1%
Total:	82	50	87	77	83	117	100	86	99	107	96	96	94	100%	75	100%
Controllable Non-Issued Violations																
Framing of Plate	0	0	0	0	0	0	0	0	0	1	1	1	1	8%	1	9%
Focus / Clarity of Plate	0	1	0	0	0	0	0	1	0	0	0	0	1	8%	2	13%
Dark Interior	2	1	0	0	0	0	0	0	7	1	0	0	3	21%	1	9%
Framing of Driver	0	0	0	0	0	0	0	0	0	0	0	0	0	0%	0	0%
Focus / Clarity of Driver	0	0	0	0	0	0	0	1	0	0	0	0	1	8%	1	9%
Framing of Car	0	0	0	0	0	0	0	0	0	0	0	0	0	0%	1	9%
Operator / Data Error	0	0	0	0	0	0	0	0	0	0	0	0	0	0%	0	0%
Exposure	0	0	0	0	0	0	0	0	0	0	0	1	1	8%	0	0%
Equipment Malfunction	0	0	0	0	1	0	0	0	2	0	0	0	2	11%	1	12%
Xerox Expired	0	0	0	0	0	0	0	0	0	5	0	0	5	38%	4	39%
Total:	2	2	0	0	1	0	0	2	9	7	1	2	13	100%	11	100%
Summary Metrics													Year to Date Average		2012 Average	
Daily Ave Vehicle Passes	11,944	11,233	11,801	11,930	11,653	11,375	12,104	11,921	11,738	11,985	12,051	11,343	11,757		11,685	
Ave Issued Speed	24	22	23	23	23	23	23	23	16	23	23	23	22		22	
Ave Issued Red Seconds	1.1	0.7	1.1	0.5	0.6	0.5	0.5	0.5	0.3	0.5	0.5	0.6	1		0.6	
Citation / Violation Iss Rate	57%	63%	48%	53%	56%	41%	38%	52%	45%	46%	53%	45%	50%		54%	
Controllable Iss Rate	98%	98%	100%	100%	99%	100%	100%	98%	91%	93%	99%	98%	98%		97%	



City of West Hollywood Approach Summary Report

Location 3111: N/B Fairfax @ Fountain (GLD-4 Camera System)

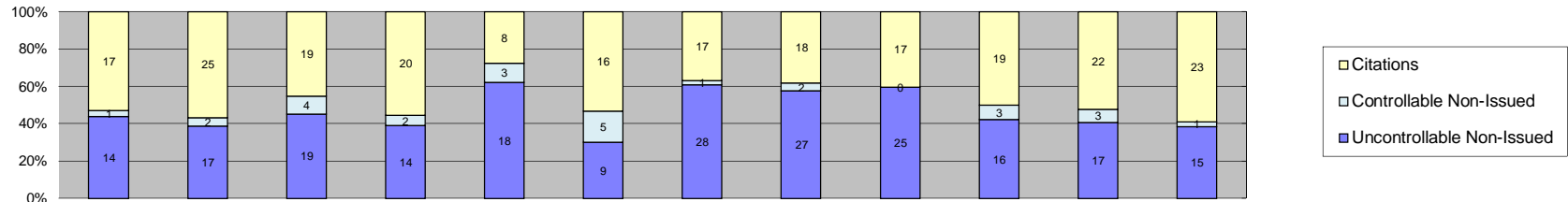


Events	Jan-13	Feb-13	Mar-13	Apr-13	May-13	Jun-13	Jul-13	Aug-13	Sep-13	Oct-13	Nov-13	Dec-13	Year to Date Average		2012 Average	
													Quantity	%	Quantity	%
Non-Violations	13	9	18	71	23	17	19	21	17	20	10	26	22	15%	13	7%
Violations	93	109	124	32	146	155	148	140	115	149	160	157	127	85%	182	93%
Total:	106	118	142	103	169	172	167	161	132	169	170	183	149	100%	195	100%
Violations																
Uncontrollable Non-Issued	35	51	51	14	65	96	99	97	101	115	95	97	76	59%	71	39%
Controllable Non-Issued	4	2	9	0	5	2	0	0	1	8	1	0	4	3%	4	2%
Citations	54	56	64	18	76	57	49	43	13	26	64	60	48	38%	109	59%
Total:	93	109	124	32	146	155	148	140	115	149	160	157	129	100%	183	100%
Non-Violations																
Rear Axle Violation	3	1	1	1	0	1	2	2	1	2	0	2	2	7%	3	17%
Emergency Vehicle	2	1	0	1	10	4	3	2	3	1	1	6	3	14%	3	23%
Right Turn	2	2	6	3	3	2	3	5	5	4	4	7	4	17%	3	18%
No Violation Occurred	6	5	11	66	10	10	11	12	8	13	5	11	14	62%	6	42%
Total:	13	9	18	71	23	17	19	21	17	20	10	26	23	100%	14	100%
Uncontrollable Non-Issued Violations																
No Plate	13	24	16	6	29	26	34	27	36	40	42	29	27	31%	31	41%
Out of State Plate	0	4	0	0	1	0	3	1	1	0	3	2	2	2%	5	6%
Glare on Plate	0	1	2	0	1	28	23	31	18	21	3	2	13	15%	2	2%
Illegible Plate	3	3	4	0	1	14	12	12	31	21	33	37	16	18%	2	2%
Plate Obstructed	1	1	5	1	2	3	0	2	2	1	1	1	2	2%	2	3%
Windshield Glare	4	4	11	5	13	9	10	14	5	16	3	5	8	10%	7	9%
Driver Obstructed	1	1	0	0	0	4	2	1	4	3	0	2	2	3%	3	3%
Car Obstructed	2	1	2	0	1	0	1	0	0	1	0	0	1	2%	2	3%
No DMV Match Found	9	11	6	1	16	12	11	8	3	9	9	10	9	10%	15	19%
LASD Expired	0	0	1	0	0	0	0	0	0	0	0	6	4	4%	2	3%
LASD Return	2	1	4	1	1	0	3	1	1	2	1	3	2	2%	6	8%
Yellow Interval Not Met	0	0	0	0	0	0	0	0	0	0	0	0	0	0%	0	0%
Other	0	0	0	0	0	0	0	0	0	1	0	0	1	1%	1	1%
Total:	35	51	51	14	65	96	99	97	101	115	95	97	86	100%	77	100%
Controllable Non-Issued Violations																
Framing of Plate	0	0	1	0	1	0	0	0	0	0	1	0	1	7%	1	9%
Focus / Clarity of Plate	0	0	0	0	0	0	0	0	0	0	0	0	0	0%	1	9%
Dark Interior	4	2	8	0	4	1	0	0	0	0	0	0	4	26%	1	9%
Framing of Driver	0	0	0	0	0	0	0	0	0	0	0	0	0	0%	0	0%
Focus / Clarity of Driver	0	0	0	0	0	0	0	0	0	1	0	0	1	7%	0	0%
Framing of Car	0	0	0	0	0	0	0	0	1	0	0	0	1	7%	0	0%
Operator / Data Error	0	0	0	0	0	0	0	0	0	0	0	0	0	0%	0	0%
Exposure	0	0	0	0	0	1	0	0	0	0	0	0	1	7%	0	0%
Equipment Malfunction	0	0	0	0	0	0	0	0	0	2	0	0	2	14%	2	14%
Xerox Expired	0	0	0	0	0	0	0	0	0	5	0	0	5	34%	6	58%
Total:	4	2	9	0	5	2	0	0	1	8	1	0	15	100%	11	100%
Summary Metrics													Year to Date Average		2012 Average	
Daily Ave Vehicle Passes	12,614	11,986	12,341	19,060	17,234	16,319	17,567	16,949	16,708	16,723	16,618	16,460	15,882		12,261	
Ave Issued Speed	32	35	34	35	35	33	31	29	32	33	33	33	33		35	
Ave Issued Red Seconds	0.4	0.9	0.4	0.4	0.4	1.0	0.4	0.4	1.6	0.5	0.4	0.8	1		0	
Citation / Violation Iss Rate	58%	51%	52%	56%	52%	37%	33%	31%	11%	17%	40%	38%	40%		60%	
Controllable Iss Rate	93%	97%	88%	100%	94%	97%	100%	100%	93%	76%	98%	100%	95%		98%	



City of West Hollywood Approach Summary Report

Location 3112: S/B Fairfax @ Fountain (GLD-4 Camera System)

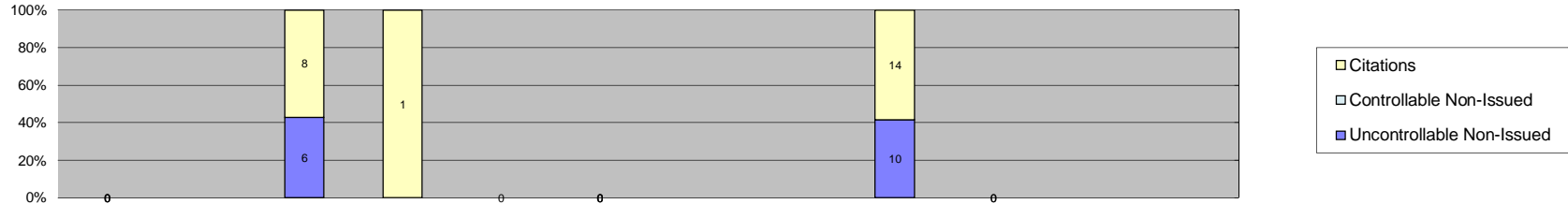


Events	Jan-13	Feb-13	Mar-13	Apr-13	May-13	Jun-13	Jul-13	Aug-13	Sep-13	Oct-13	Nov-13	Dec-13	Year to Date Average		2012 Average	
													Quantity	%	Quantity	%
Non-Violations	8	9	7	9	9	11	13	12	11	18	8	7	10	21%	10	13%
Violations	32	44	42	36	29	30	46	47	42	38	42	39	39	79%	65	87%
Total:	40	53	49	45	38	41	59	59	53	56	50	46	49	100%	75	100%
Violations																
Uncontrollable Non-Issued	14	17	19	14	18	9	28	27	25	16	17	15	18	47%	25	39%
Controllable Non-Issued	1	2	4	2	3	5	1	2	0	3	3	1	2	6%	5	7%
Citations	17	25	19	20	8	16	17	18	17	19	22	23	18	47%	35	53%
Total:	32	44	42	36	29	30	46	47	42	38	42	39	39	100%	65	100%
Non-Violations																
Rear Axle Violation	1	0	1	0	2	1	2	0	2	0	0	0	2	14%	2	17%
Emergency Vehicle	1	5	1	4	1	1	4	2	1	4	3	3	3	23%	3	23%
Right Turn	4	1	2	2	2	4	1	4	4	8	2	1	3	27%	3	30%
No Violation Occurred	2	3	3	3	4	5	6	6	4	6	3	3	4	37%	3	30%
Total:	8	9	7	9	9	11	13	12	11	18	8	7	11	100%	11	100%
Uncontrollable Non-Issued Violations																
No Plate	8	6	10	6	6	2	7	13	12	7	9	6	8	29%	12	36%
Out of State Plate	0	0	1	1	0	0	0	0	0	0	2	0	1	5%	2	8%
Glare on Plate	0	0	0	0	0	1	0	0	2	0	0	0	2	6%	2	6%
Illegible Plate	0	0	0	0	0	0	0	1	0	1	1	2	1	5%	2	7%
Plate Obstructed	0	0	1	0	0	2	0	1	0	2	0	2	2	6%	2	6%
Windshield Glare	1	0	5	0	5	2	11	4	4	2	0	0	4	16%	3	8%
Driver Obstructed	1	0	0	0	0	0	0	0	1	0	2	2	2	6%	1	4%
Car Obstructed	0	0	0	0	1	1	1	0	1	0	0	0	1	4%	1	3%
No DMV Match Found	3	11	1	3	3	1	8	7	4	2	2	3	4	15%	4	13%
LASD Expired	0	0	0	0	0	0	0	0	0	0	0	0	0	0%	1	3%
LASD Return	1	0	1	3	3	0	1	0	1	2	1	0	2	6%	2	6%
Yellow Interval Not Met	0	0	0	0	0	0	0	0	0	0	0	0	0	0%	0	0%
Other	0	0	0	1	0	0	0	1	0	0	0	0	1	4%	0	0%
Total:	14	17	19	14	18	9	28	27	25	16	17	15	27	100%	32	100%
Controllable Non-Issued Violations																
Framing of Plate	0	0	0	0	0	0	0	0	0	0	0	0	0	0%	1	6%
Focus / Clarity of Plate	0	0	0	0	0	0	0	0	0	0	0	0	0	0%	0	0%
Dark Interior	1	2	3	2	3	5	1	2	0	3	2	1	2	53%	3	21%
Framing of Driver	0	0	0	0	0	0	0	0	0	0	0	0	0	0%	1	6%
Focus / Clarity of Driver	0	0	1	0	0	0	0	0	0	0	0	0	1	23%	1	6%
Framing of Car	0	0	0	0	0	0	0	0	0	0	1	0	1	23%	0	0%
Operator / Data Error	0	0	0	0	0	0	0	0	0	0	0	0	0	0%	6	37%
Exposure	0	0	0	0	0	0	0	0	0	0	0	0	0	0%	1	6%
Equipment Malfunction	0	0	0	0	0	0	0	0	0	0	0	0	0	0%	1	6%
Xerox Expired	0	0	0	0	0	0	0	0	0	0	0	0	0	0%	2	12%
Total:	1	2	4	2	3	5	1	2	0	3	3	1	4	100%	16	100%
Summary Metrics													Year to Date Average		2012 Average	
Daily Ave Vehicle Passes	11,137	10,699	10,728	17,593	16,530	15,952	17,307	16,644	16,051	16,198	15,517	16,129	15,040		11,245	
Ave Issued Speed	38	33	36	34	34	34	39	37	39	34	35	33	35		36	
Ave Issued Red Seconds	0.5	0.6	0.5	1.2	0.3	0.6	0.5	0.7	0.5	0.6	0.6	0.5	1		0.8	
Citation / Violation Iss Rate	53%	57%	45%	56%	28%	53%	37%	38%	40%	50%	52%	59%	47%		54%	
Controllable Iss Rate	94%	93%	83%	91%	73%	76%	94%	90%	100%	86%	88%	96%	89%		88%	



City of West Hollywood Approach Summary Report

Location 3113: E/B Fountain @ Fairfax (GLD-4 Camera System)

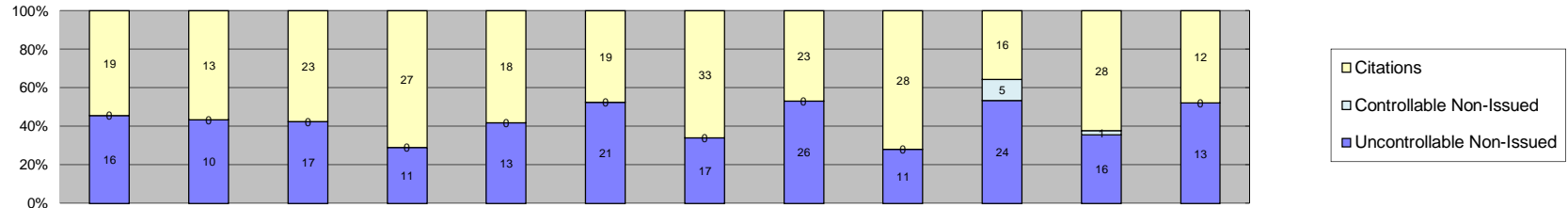


Events	Jan-13	Feb-13	Mar-13	Apr-13	May-13	Jun-13	Jul-13	Aug-13	Sep-13	Oct-13	Nov-13	Dec-13	Year to Date Average		2012 Average	
													Quantity	%	Quantity	%
Non-Violations	0	0	45	4	0	0	0	0	42	0	0	0	30	70%	37	71%
Violations	0	0	14	1	0	0	0	0	24	0	0	0	13	30%	15	29%
Total:	0	0	59	5	0	0	0	0	66	0	0	0	43	100%	52	100%
Violations																
Uncontrollable Non-Issued	0	0	6	0	0	0	0	0	10	0	0	0	8	51%	6	38%
Controllable Non-Issued	0	0	0	0	0	0	0	0	0	0	0	0	0	0%	0	0%
Citations	0	0	8	1	0	0	0	0	14	0	0	0	8	49%	9	62%
Total:	0	0	14	1	0	0	0	0	24	0	0	0	16	100%	15	100%
Non-Violations																
Rear Axle Violation	0	0	0	0	0	0	0	0	0	0	0	0	0	0%	0	0%
Emergency Vehicle	0	0	2	0	0	0	0	0	1	0	0	0	2	5%	4	9%
Right Turn	0	0	28	2	0	0	0	0	31	0	0	0	20	66%	23	53%
No Violation Occurred	0	0	15	2	0	0	0	0	10	0	0	0	9	29%	17	38%
Total:	0	0	45	4	0	0	0	0	42	0	0	0	31	100%	44	100%
Uncontrollable Non-Issued Violations																
No Plate	0	0	4	0	0	0	0	0	3	0	0	0	4	35%	3	38%
Out of State Plate	0	0	0	0	0	0	0	0	0	0	0	0	0	0%	1	11%
Glare on Plate	0	0	0	0	0	0	0	0	0	0	0	0	0	0%	0	0%
Illegible Plate	0	0	0	0	0	0	0	0	1	0	0	0	1	10%	0	0%
Plate Obstructed	0	0	0	0	0	0	0	0	0	0	0	0	0	0%	0	0%
Windshield Glare	0	0	0	0	0	0	0	0	2	0	0	0	2	20%	0	0%
Driver Obstructed	0	0	0	0	0	0	0	0	0	0	0	0	0	0%	0	0%
Car Obstructed	0	0	0	0	0	0	0	0	1	0	0	0	1	10%	1	11%
No DMV Match Found	0	0	2	0	0	0	0	0	3	0	0	0	3	25%	2	17%
LASD Expired	0	0	0	0	0	0	0	0	0	0	0	0	0	0%	0	0%
LASD Return	0	0	0	0	0	0	0	0	0	0	0	0	0	0%	0	0%
Yellow Interval Not Met	0	0	0	0	0	0	0	0	0	0	0	0	0	0%	0	0%
Other	0	0	0	0	0	0	0	0	0	0	0	0	0	0%	2	23%
Total:	0	0	6	0	0	0	0	0	10	0	0	0	10	100%	9	100%
Controllable Non-Issued Violations																
Framing of Plate	0	0	0	0	0	0	0	0	0	0	0	0	0	0	0	0%
Focus / Clarity of Plate	0	0	0	0	0	0	0	0	0	0	0	0	0	0	0	0%
Dark Interior	0	0	0	0	0	0	0	0	0	0	0	0	0	0	0	0%
Framing of Driver	0	0	0	0	0	0	0	0	0	0	0	0	0	0	0	0%
Focus / Clarity of Driver	0	0	0	0	0	0	0	0	0	0	0	0	0	0	0	0%
Framing of Car	0	0	0	0	0	0	0	0	0	0	0	0	0	0	0	0%
Operator / Data Error	0	0	0	0	0	0	0	0	0	0	0	0	0	0	0	0%
Exposure	0	0	0	0	0	0	0	0	0	0	0	0	0	0	0	0%
Equipment Malfunction	0	0	0	0	0	0	0	0	0	0	0	0	0	0	0	0%
Xerox Expired	0	0	0	0	0	0	0	0	0	0	0	0	0	0	0	0%
Total:	0	0	0	0	0	0	0	0	0	0	0	0	0	0%	0	0%
Summary Metrics													Year to Date Average		2012 Average	
Daily Ave Vehicle Passes	0	0	9,663	9,923	0	0	0	0	9,847	0	0	0	9,811		9,744	
Ave Issued Speed	0	0	31	28	0	0	0	0	35	0	0	0	31		40	
Ave Issued Red Seconds	0	0	0.4	1.3	0	0	0	0	0.6	0	0	0	1		4.9	
Citation / Violation Iss Rate	0%	0%	57%	100%	0%	0%	0%	0%	58%	0%	0%	0%	72%		62%	
Controllable Iss Rate	0%	0%	100%	100%	0%	0%	0%	0%	100%	0%	0%	0%	100%		100%	



City of West Hollywood
Approach Summary Report

Location 3121: N/B Crescent Heights @ Fountain (GLD-4 Camera System)

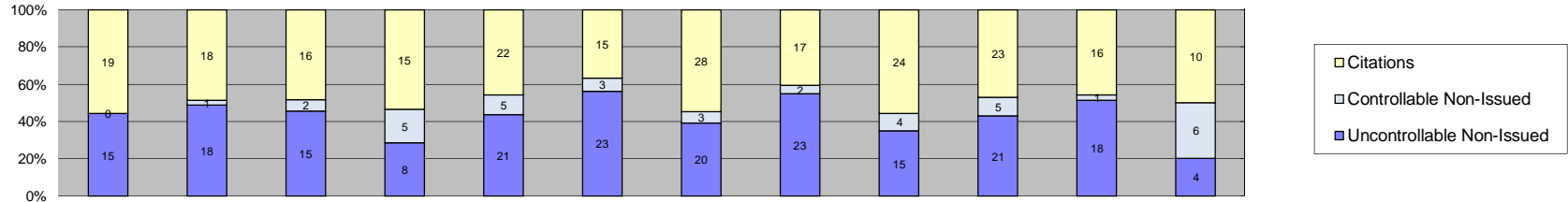


Events	Jan-13	Feb-13	Mar-13	Apr-13	May-13	Jun-13	Jul-13	Aug-13	Sep-13	Oct-13	Nov-13	Dec-13	Year to Date Average		2012 Average	
													Quantity	%	Quantity	%
Non-Violations	18	28	20	15	17	19	24	18	19	18	25	25	21	35%	21	21%
Violations	35	23	40	38	31	40	50	49	39	45	45	25	38	65%	76	79%
Total:	53	51	60	53	48	59	74	67	58	63	70	50	59	100%	96	100%
Violations																
Uncontrollable Non-Issued	16	10	17	11	13	21	17	26	11	24	16	13	16	40%	32	42%
Controllable Non-Issued	0	0	0	0	0	0	0	0	0	5	1	0	3	7%	2	2%
Citations	19	13	23	27	18	19	33	23	28	16	28	12	22	53%	43	56%
Total:	35	23	40	38	31	40	50	49	39	45	45	25	41	100%	77	100%
Non-Violations																
Rear Axle Violation	0	0	0	0	0	0	0	0	0	0	0	0	0	0%	1	5%
Emergency Vehicle	0	8	3	1	2	3	3	1	0	0	5	3	3	15%	3	12%
Right Turn	7	5	5	4	7	4	8	7	8	8	9	9	7	32%	7	32%
No Violation Occurred	11	15	12	10	8	12	13	10	11	10	11	13	11	53%	11	52%
Total:	18	28	20	15	17	19	24	18	19	18	25	25	21	100%	22	100%
Uncontrollable Non-Issued Violations																
No Plate	10	3	12	4	3	6	9	7	5	14	12	6	8	33%	16	38%
Out of State Plate	0	1	1	0	0	0	0	1	0	0	0	0	1	4%	3	6%
Glare on Plate	0	0	0	0	0	2	0	3	1	0	0	0	2	9%	2	6%
Illegible Plate	0	1	0	0	0	0	1	1	0	0	0	1	1	4%	2	6%
Plate Obstructed	0	0	0	1	0	0	0	1	0	0	0	0	1	4%	2	4%
Windshield Glare	1	1	2	1	2	7	2	4	1	4	0	0	3	11%	5	12%
Driver Obstructed	0	0	0	0	0	0	0	0	0	0	0	0	0	0%	1	2%
Car Obstructed	0	2	0	1	2	0	0	0	0	0	0	0	2	7%	1	2%
No DMV Match Found	5	2	2	4	4	6	5	8	3	6	4	6	5	20%	6	14%
LASD Expired	0	0	0	0	0	0	0	0	0	0	0	0	0	0%	1	2%
LASD Return	0	0	0	0	2	0	0	1	1	0	0	0	1	6%	2	4%
Yellow Interval Not Met	0	0	0	0	0	0	0	0	0	0	0	0	0	0%	0	0%
Other	0	0	0	0	0	0	0	0	0	0	0	0	0	0%	1	2%
Total:	16	10	17	11	13	21	17	26	11	24	16	13	23	100%	42	100%
Controllable Non-Issued Violations																
Framing of Plate	0	0	0	0	0	0	0	0	0	0	0	0	0	0%	0	0%
Focus / Clarity of Plate	0	0	0	0	0	0	0	0	0	0	0	0	0	0%	1	20%
Dark Interior	0	0	0	0	0	0	0	0	0	0	0	0	0	0%	0	0%
Framing of Driver	0	0	0	0	0	0	0	0	0	0	0	0	0	0%	0	0%
Focus / Clarity of Driver	0	0	0	0	0	0	0	0	0	0	0	0	0	0%	0	0%
Framing of Car	0	0	0	0	0	0	0	0	0	0	0	0	0	0%	0	0%
Operator / Data Error	0	0	0	0	0	0	0	0	0	0	0	0	0	0%	0	0%
Exposure	0	0	0	0	0	0	0	0	0	0	0	0	0	0%	0	0%
Equipment Malfunction	0	0	0	0	0	0	0	0	0	0	0	0	0	0%	1	20%
Xerox Expired	0	0	0	0	0	0	0	0	0	5	1	0	3	100%	3	60%
Total:	0	0	0	0	0	0	0	0	0	5	1	0	3	100%	5	100%
Summary Metrics													Year to Date Average		2012 Average	
Daily Ave Vehicle Passes	11,359	10,902	11,017	12,363	11,931	11,881	12,212	11,662	10,719	11,459	10,042	10,168	11,309		11,824	
Ave Issued Speed	34	36	37	38	38	37	33	37	39	39	36	38	37		37	
Ave Issued Red Seconds	3.9	5.5	5.3	1.6	0.4	0.3	0.5	0.5	0.5	0.4	5.8	0.5	2		1	
Citation / Violation Iss Rate	54%	57%	58%	71%	58%	48%	66%	47%	72%	36%	62%	48%	56%		57%	
Controllable Iss Rate	100%	100%	100%	100%	100%	100%	100%	100%	100%	76%	97%	100%	98%		99%	



City of West Hollywood
Approach Summary Report

Location 3122: S/B Crescent Heights @ Fountain (GLD-4 Camera System)

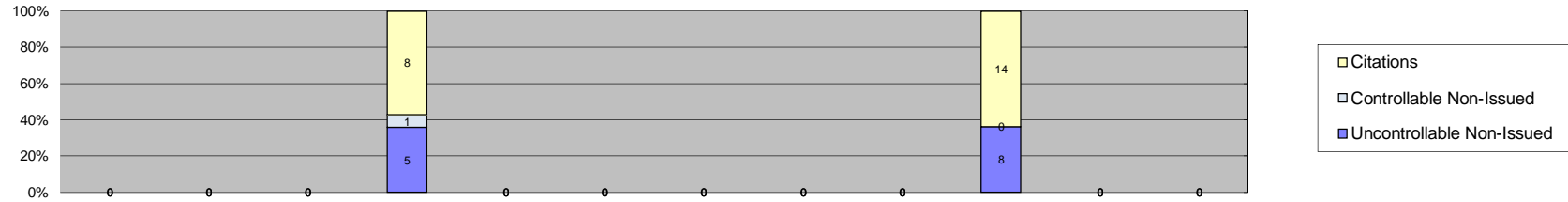


Events	Jan-13	Feb-13	Mar-13	Apr-13	May-13	Jun-13	Jul-13	Aug-13	Sep-13	Oct-13	Nov-13	Dec-13	Year to Date Average		2012 Average	
													Quantity	%	Quantity	%
Non-Violations	18	19	25	24	28	18	30	30	28	23	27	19	24	39%	32	29%
Violations	34	37	33	28	48	41	51	42	43	49	35	20	38	61%	80	71%
Total:	52	56	58	52	76	59	81	72	71	72	62	39	63	100%	113	100%
Violations																
Uncontrollable Non-Issued	15	18	15	8	21	23	20	23	15	21	18	4	17	43%	28	35%
Controllable Non-Issued	0	1	2	5	5	3	3	2	4	5	1	6	3	9%	6	8%
Citations	19	18	16	15	22	15	28	17	24	23	16	10	19	48%	46	57%
Total:	34	37	33	28	48	41	51	42	43	49	35	20	39	100%	80	100%
Non-Violations																
Rear Axle Violation	0	0	0	0	1	0	0	0	0	0	0	1	1	4%	1	3%
Emergency Vehicle	2	2	3	1	1	2	1	2	2	2	0	0	2	7%	3	8%
Right Turn	8	5	15	16	15	10	12	12	15	10	18	8	12	48%	16	48%
No Violation Occurred	8	12	7	7	11	6	17	16	11	11	9	10	10	41%	14	41%
Total:	18	19	25	24	28	18	30	30	28	23	27	19	25	100%	34	100%
Uncontrollable Non-Issued Violations																
No Plate	8	8	5	3	13	10	8	13	4	8	11	2	8	28%	16	43%
Out of State Plate	0	1	1	0	0	0	1	0	0	0	1	0	1	4%	2	6%
Glare on Plate	0	1	0	0	0	0	0	0	0	1	0	0	1	4%	1	3%
Illegible Plate	0	0	1	0	0	1	0	0	0	1	1	1	1	4%	1	3%
Plate Obstructed	0	0	0	0	0	0	0	0	1	0	2	0	2	5%	1	3%
Windshield Glare	2	1	3	2	6	6	9	3	4	3	2	0	4	14%	3	8%
Driver Obstructed	0	0	0	0	0	1	0	0	2	0	0	0	2	5%	1	3%
Car Obstructed	0	0	0	0	0	3	0	0	0	0	0	0	3	11%	1	3%
No DMV Match Found	4	7	4	3	2	2	1	6	3	6	0	0	4	14%	6	16%
LASD Expired	0	0	0	0	0	0	0	0	0	1	0	1	1	4%	1	4%
LASD Return	1	0	1	0	0	0	1	1	1	0	1	0	1	4%	2	6%
Yellow Interval Not Met	0	0	0	0	0	0	0	0	0	0	0	0	0	0%	0	0%
Other	0	0	0	0	0	0	0	0	0	1	0	0	1	4%	1	3%
Total:	15	18	15	8	21	23	20	23	15	21	18	4	27	100%	36	100%
Controllable Non-Issued Violations																
Framing of Plate	0	0	0	0	0	0	0	0	0	0	0	0	0	0%	0	0%
Focus / Clarity of Plate	0	0	0	0	0	0	0	0	0	0	0	0	0	0%	0	0%
Dark Interior	0	1	2	5	3	3	3	2	2	1	1	1	2	26%	3	10%
Framing of Driver	0	0	0	0	0	0	0	0	0	0	0	0	0	0%	0	0%
Focus / Clarity of Driver	0	0	0	0	0	0	0	0	0	0	0	0	0	0%	0	0%
Framing of Car	0	0	0	0	0	0	0	0	0	0	0	0	0	0%	0	0%
Operator / Data Error	0	0	0	0	0	0	0	0	0	0	0	0	0	0%	20	61%
Exposure	0	0	0	0	1	0	0	0	0	0	0	0	1	12%	0	0%
Equipment Malfunction	0	0	0	0	1	0	0	0	2	1	0	5	2	27%	4	11%
Xerox Expired	0	0	0	0	0	0	0	0	0	3	0	0	3	36%	6	18%
Total:	0	1	2	5	5	3	3	2	4	5	1	6	8	100%	33	100%
Summary Metrics													Year to Date Average		2012 Average	
Daily Ave Vehicle Passes	11,782	11,484	11,331	13,399	12,567	11,151	12,986	12,860	12,632	12,469	10,817	11,778	12,105		12,445	
Ave Issued Speed	38	36	36	33	35	36	36	33	42	35	37	34	36		38	
Ave Issued Red Seconds	3.2	0.4	0.4	0.5	0.6	0.5	0.6	0.5	0.7	0.6	0.5	0.5	1		0.9	
Citation / Violation Iss Rate	56%	49%	48%	54%	46%	37%	55%	40%	56%	47%	46%	50%	49%		56%	
Controllable Iss Rate	100%	95%	89%	75%	81%	83%	90%	89%	86%	82%	94%	63%	86%		88%	



City of West Hollywood Approach Summary Report

Location 3123: E/B Fountain @ Crescent Heights (GLD-4 Camera System)

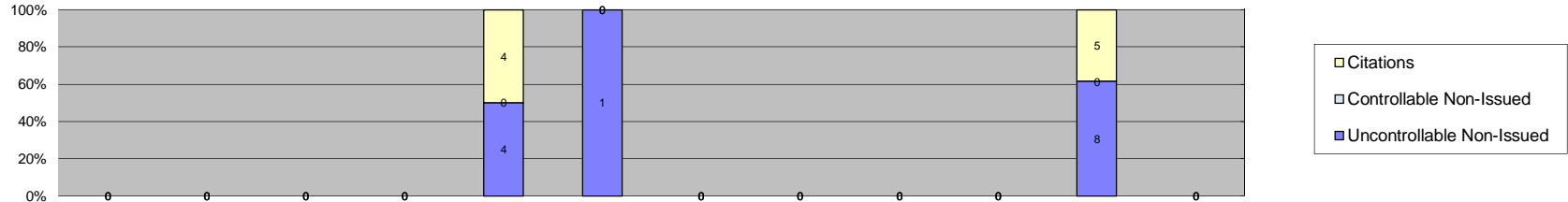


Events	Jan-13	Feb-13	Mar-13	Apr-13	May-13	Jun-13	Jul-13	Aug-13	Sep-13	Oct-13	Nov-13	Dec-13	Year to Date Average		2012 Average	
													Quantity	%	Quantity	%
Non-Violations	0	0	0	23	0	0	0	0	0	26	0	0	25	58%	15	47%
Violations	0	0	0	14	0	0	0	0	0	22	0	0	18	42%	18	53%
Total:	0	0	0	37	0	0	0	0	0	48	0	0	43	100%	33	100%
Violations																
Uncontrollable Non-Issued	0	0	0	5	0	0	0	0	0	8	0	0	7	35%	8	41%
Controllable Non-Issued	0	0	0	1	0	0	0	0	0	0	0	0	1	5%	2	11%
Citations	0	0	0	8	0	0	0	0	0	14	0	0	11	59%	9	49%
Total:	0	0	0	14	0	0	0	0	0	22	0	0	19	100%	19	100%
Non-Violations																
Rear Axle Violation	0	0	0	0	0	0	0	0	0	0	0	0	0	0%	0	0%
Emergency Vehicle	0	0	0	0	0	0	0	0	0	1	0	0	1	4%	2	9%
Right Turn	0	0	0	14	0	0	0	0	0	18	0	0	16	64%	7	44%
No Violation Occurred	0	0	0	9	0	0	0	0	0	7	0	0	8	32%	7	46%
Total:	0	0	0	23	0	0	0	0	0	26	0	0	25	100%	16	100%
Uncontrollable Non-Issued Violations																
No Plate	0	0	0	1	0	0	0	0	0	5	0	0	3	43%	5	59%
Out of State Plate	0	0	0	0	0	0	0	0	0	0	0	0	0	0%	1	12%
Glare on Plate	0	0	0	0	0	0	0	0	0	0	0	0	0	0%	0	0%
Illegible Plate	0	0	0	0	0	0	0	0	0	0	0	0	0	0%	0	0%
Plate Obstructed	0	0	0	0	0	0	0	0	0	0	0	0	0	0%	0	0%
Windshield Glare	0	0	0	2	0	0	0	0	0	1	0	0	2	21%	0	0%
Driver Obstructed	0	0	0	0	0	0	0	0	0	0	0	0	0	0%	0	0%
Car Obstructed	0	0	0	1	0	0	0	0	0	0	0	0	1	14%	0	0%
No DMV Match Found	0	0	0	1	0	0	0	0	0	2	0	0	2	21%	2	18%
LASD Expired	0	0	0	0	0	0	0	0	0	0	0	0	0	0%	0	0%
LASD Return	0	0	0	0	0	0	0	0	0	0	0	0	0	0%	1	12%
Yellow Interval Not Met	0	0	0	0	0	0	0	0	0	0	0	0	0	0%	0	0%
Other	0	0	0	0	0	0	0	0	0	0	0	0	0	0%	0	0%
Total:	0	0	0	5	0	0	0	0	0	8	0	0	7	100%	9	100%
Controllable Non-Issued Violations																
Framing of Plate	0	0	0	0	0	0	0	0	0	0	0	0	0	0%	0	0%
Focus / Clarity of Plate	0	0	0	0	0	0	0	0	0	0	0	0	0	0%	1	50%
Dark Interior	0	0	0	1	0	0	0	0	0	0	0	0	1	100%	0	0%
Framing of Driver	0	0	0	0	0	0	0	0	0	0	0	0	0	0%	0	0%
Focus / Clarity of Driver	0	0	0	0	0	0	0	0	0	0	0	0	0	0%	0	0%
Framing of Car	0	0	0	0	0	0	0	0	0	0	0	0	0	0%	1	50%
Operator / Data Error	0	0	0	0	0	0	0	0	0	0	0	0	0	0%	0	0%
Exposure	0	0	0	0	0	0	0	0	0	0	0	0	0	0%	0	0%
Equipment Malfunction	0	0	0	0	0	0	0	0	0	0	0	0	0	0%	0	0%
Xerox Expired	0	0	0	0	0	0	0	0	0	0	0	0	0	0%	0	0%
Total:	0	0	0	1	0	0	0	0	0	0	0	0	1	100%	2	100%
Summary Metrics													Year to Date Average		2012 Average	
Daily Ave Vehicle Passes	0	0	0	12,327	0	0	0	0	0	13,191	1,351	0	8,956		11,807	
Ave Issued Speed	0	0	0	32	0	0	0	0	0	35	0	0	34		37	
Ave Issued Red Seconds	0	0	0	0.6	0	0	0	0	0	0.4	0	0	1		0.9	
Citation / Violation Iss Rate	0%	0%	0%	57%	0%	0%	0%	0%	0%	64%	0%	0%	60%		51%	
Controllable Iss Rate	0%	0%	0%	89%	0%	0%	0%	0%	0%	100%	0%	0%	94%		90%	



City of West Hollywood Approach Summary Report

Location 3124: W/B Fountain @ Crescent Heights (GLD-4 Camera System)

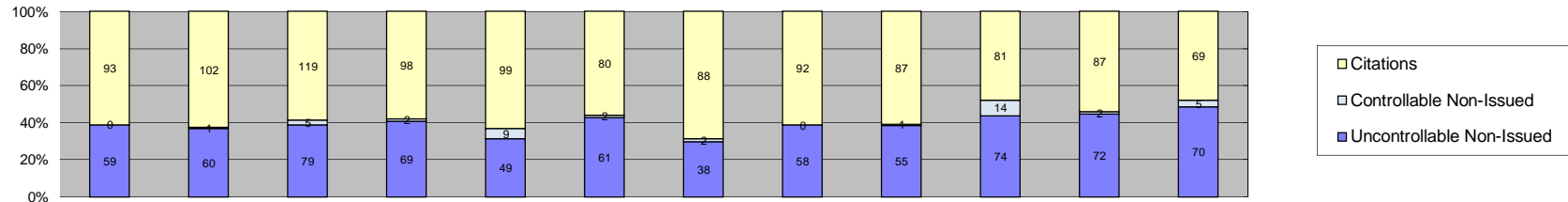


Events	Jan-13	Feb-13	Mar-13	Apr-13	May-13	Jun-13	Jul-13	Aug-13	Sep-13	Oct-13	Nov-13	Dec-13	Year to Date Average		2012 Average	
													Quantity	%	Quantity	%
Non-Violations	0	0	0	0	21	2	0	0	0	0	13	4	10	58%	21	75%
Violations	0	0	0	0	8	1	0	0	0	0	13	0	7	42%	7	25%
Total:	0	0	0	0	29	3	0	0	0	0	26	4	17	100%	28	100%
Violations																
Uncontrollable Non-Issued	0	0	0	0	4	1	0	0	0	0	8	0	4	49%	4	40%
Controllable Non-Issued	0	0	0	0	0	0	0	0	0	0	0	0	0	0%	0	0%
Citations	0	0	0	0	4	0	0	0	0	0	5	0	5	51%	6	60%
Total:	0	0	0	0	8	1	0	0	0	0	13	0	9	100%	10	100%
Non-Violations																
Rear Axle Violation	0	0	0	0	0	0	0	0	0	0	0	0	0	0%	1	5%
Emergency Vehicle	0	0	0	0	3	0	0	0	0	0	1	1	2	14%	2	10%
Right Turn	0	0	0	0	13	1	0	0	0	0	5	3	6	48%	14	67%
No Violation Occurred	0	0	0	0	5	1	0	0	0	0	7	0	4	38%	4	19%
Total:	0	0	0	0	21	2	0	0	0	0	13	4	12	100%	21	100%
Uncontrollable Non-Issued Violations																
No Plate	0	0	0	0	2	0	0	0	0	0	4	0	3	46%	1	11%
Out of State Plate	0	0	0	0	0	0	0	0	0	0	0	0	0	0%	2	17%
Glare on Plate	0	0	0	0	0	0	0	0	0	0	0	0	0	0%	2	13%
Illegible Plate	0	0	0	0	0	0	0	0	0	0	0	0	0	0%	2	17%
Plate Obstructed	0	0	0	0	0	0	0	0	0	0	0	0	0	0%	0	0%
Windshield Glare	0	0	0	0	0	1	0	0	0	0	1	0	1	15%	0	0%
Driver Obstructed	0	0	0	0	0	0	0	0	0	0	0	0	0	0%	0	0%
Car Obstructed	0	0	0	0	0	0	0	0	0	0	0	0	0	0%	0	0%
No DMV Match Found	0	0	0	0	2	0	0	0	0	0	3	0	3	38%	2	17%
LASD Expired	0	0	0	0	0	0	0	0	0	0	0	0	0	0%	1	8%
LASD Return	0	0	0	0	0	0	0	0	0	0	0	0	0	0%	0	0%
Yellow Interval Not Met	0	0	0	0	0	0	0	0	0	0	0	0	0	0%	0	0%
Other	0	0	0	0	0	0	0	0	0	0	0	0	0	0%	2	17%
Total:	0	0	0	0	4	1	0	0	0	0	8	0	7	100%	12	100%
Controllable Non-Issued Violations																
Framing of Plate	0	0	0	0	0	0	0	0	0	0	0	0	0	0%	0	0%
Focus / Clarity of Plate	0	0	0	0	0	0	0	0	0	0	0	0	0	0%	0	0%
Dark Interior	0	0	0	0	0	0	0	0	0	0	0	0	0	0%	0	0%
Framing of Driver	0	0	0	0	0	0	0	0	0	0	0	0	0	0%	0	0%
Focus / Clarity of Driver	0	0	0	0	0	0	0	0	0	0	0	0	0	0%	0	0%
Framing of Car	0	0	0	0	0	0	0	0	0	0	0	0	0	0%	0	0%
Operator / Data Error	0	0	0	0	0	0	0	0	0	0	0	0	0	0%	0	0%
Exposure	0	0	0	0	0	0	0	0	0	0	0	0	0	0%	0	0%
Equipment Malfunction	0	0	0	0	0	0	0	0	0	0	0	0	0	0%	0	0%
Xerox Expired	0	0	0	0	0	0	0	0	0	0	0	0	0	0%	0	0%
Total:	0	0	0	0	0	0	0	0	0	0	0	0	0	0%	0	0%
Summary Metrics													Year to Date Average		2012 Average	
Daily Ave Vehicle Passes	0	0	0	0	8,574	9,891	0	0	0	0	8,776	7,214	8,614		9,034	
Ave Issued Speed	0	0	0	0	38	0	0	0	0	0	37	0	38		30	
Ave Issued Red Seconds	0	0	0	0	0.9	0	0	0	0	0	0.4	0	1		1.8	
Citation / Violation Iss Rate	0%	0%	0%	0%	50%	0%	0%	0%	0%	0%	38%	0%	44%		41%	
Controllable Iss Rate	0%	0%	0%	0%	100%	0%	0%	0%	0%	0%	100%	0%	100%		100%	



City of West Hollywood
Approach Summary Report

Location 3131: N/B La Cienega @ Melrose (GLD-4 Camera System)

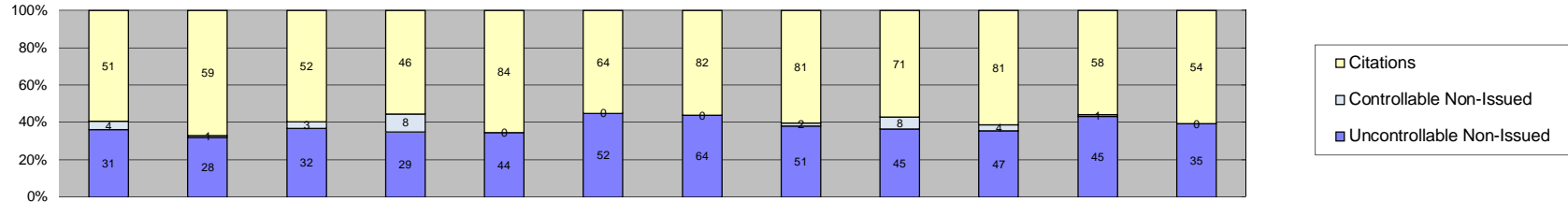


Events	Jan-13	Feb-13	Mar-13	Apr-13	May-13	Jun-13	Jul-13	Aug-13	Sep-13	Oct-13	Nov-13	Dec-13	Year to Date Average		2012 Average	
													Quantity	%	Quantity	%
Non-Violations	25	21	24	23	21	31	48	41	25	28	27	25	28	15%	27	17%
Violations	152	163	203	169	157	143	128	150	143	169	161	144	157	85%	132	83%
Total:	177	184	227	192	178	174	176	191	168	197	188	169	185	100%	159	100%
Violations																
Uncontrollable Non-Issued	59	60	79	69	49	61	38	58	55	74	72	70	62	39%	45	34%
Controllable Non-Issued	0	1	5	2	9	2	2	0	1	14	2	5	4	3%	2	2%
Citations	93	102	119	98	99	80	88	92	87	81	87	69	91	58%	86	65%
Total:	152	163	203	169	157	143	128	150	143	169	161	144	158	100%	133	100%
Non-Violations																
Rear Axle Violation	0	1	0	0	0	0	0	0	0	0	1	0	1	3%	1	4%
Emergency Vehicle	2	1	7	1	1	5	2	3	4	6	6	7	4	13%	4	13%
Right Turn	14	9	7	14	13	9	24	12	14	9	11	9	12	42%	11	39%
No Violation Occurred	9	10	10	8	7	17	22	26	7	13	9	9	12	42%	12	44%
Total:	25	21	24	23	21	31	48	41	25	28	27	25	29	100%	28	100%
Uncontrollable Non-Issued Violations																
No Plate	33	35	38	33	24	37	23	37	24	35	40	30	32	46%	23	45%
Out of State Plate	0	2	2	1	1	0	0	0	0	1	2	0	2	2%	3	5%
Glare on Plate	0	0	0	0	0	0	0	0	1	0	0	0	1	1%	0	0%
Illegible Plate	1	0	0	0	0	0	0	0	0	0	0	0	1	1%	1	2%
Plate Obstructed	2	2	0	0	1	0	1	2	0	1	0	1	1	2%	2	3%
Windshield Glare	3	6	16	11	9	9	3	8	7	8	9	4	8	11%	3	7%
Driver Obstructed	1	0	1	1	1	1	0	1	3	2	3	3	2	2%	1	2%
Car Obstructed	1	0	6	0	1	0	0	0	0	1	1	0	2	3%	1	3%
No DMV Match Found	14	11	14	17	11	13	8	9	14	25	14	25	15	20%	10	20%
LASD Expired	0	0	0	0	0	0	0	0	0	0	0	4	4	6%	3	5%
LASD Return	3	4	2	4	1	1	2	0	6	1	3	2	3	4%	3	6%
Yellow Interval Not Met	0	0	0	0	0	0	0	0	0	0	0	0	0	0%	0	0%
Other	1	0	0	2	0	0	1	1	0	0	0	1	1	2%	1	2%
Total:	59	60	79	69	49	61	38	58	55	74	72	70	71	100%	51	100%
Controllable Non-Issued Violations																
Framing of Plate	0	0	0	0	0	0	0	0	0	0	0	0	0	0%	0	0%
Focus / Clarity of Plate	0	0	0	0	0	0	0	0	0	0	0	0	0	0%	0	0%
Dark Interior	0	1	4	2	9	2	2	0	0	3	2	5	3	22%	2	27%
Framing of Driver	0	0	0	0	0	0	0	0	0	0	0	0	0	0%	0	0%
Focus / Clarity of Driver	0	0	1	0	0	0	0	0	0	0	0	0	1	7%	0	0%
Framing of Car	0	0	0	0	0	0	0	0	0	0	0	0	0	0%	0	0%
Operator / Data Error	0	0	0	0	0	0	0	0	0	0	0	0	0	0%	2	36%
Exposure	0	0	0	0	0	0	0	0	1	2	0	0	2	10%	0	0%
Equipment Malfunction	0	0	0	0	0	0	0	0	0	0	0	0	0	0%	1	18%
Xerox Expired	0	0	0	0	0	0	0	0	0	9	0	0	9	61%	1	18%
Total:	0	1	5	2	9	2	2	0	1	14	2	5	15	100%	6	100%
Summary Metrics													Year to Date Average		2012 Average	
Daily Ave Vehicle Passes	11,427	11,163	11,114	14,091	13,309	12,522	13,630	13,307	14,507	14,698	13,750	14,053	13,131		12,501	
Ave Issued Speed	39	38	39	39	39	37	36	37	37	38	38	37	38		38	
Ave Issued Red Seconds	0.8	0.7	0.5	0.4	1.2	0.9	1.9	0.9	1.9	0.4	0.4	0.8	1		0.7	
Citation / Violation Iss Rate	61%	63%	59%	58%	63%	56%	69%	61%	61%	48%	54%	48%	58%		66%	
Controllable Iss Rate	100%	99%	96%	98%	92%	98%	98%	100%	99%	85%	98%	93%	96%		99%	



City of West Hollywood Approach Summary Report

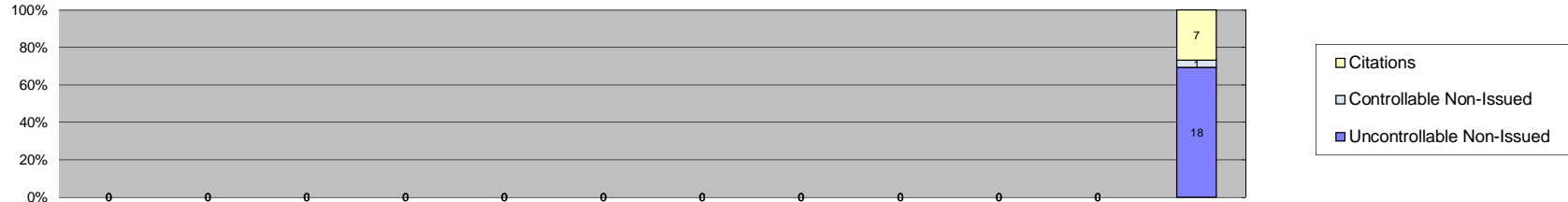
Location 3132: S/B La Cienega @ Melrose (GLD-4 Camera System)



Events	Jan-13	Feb-13	Mar-13	Apr-13	May-13	Jun-13	Jul-13	Aug-13	Sep-13	Oct-13	Nov-13	Dec-13	Year to Date Average		2012 Average	
													Quantity	%	Quantity	%
Non-Violations	105	88	115	70	97	106	114	76	92	117	107	91	98	47%	104	56%
Violations	86	88	87	83	128	116	146	134	124	132	104	89	110	53%	83	44%
Total:	191	176	202	153	225	222	260	210	216	249	211	180	208	100%	186	100%
Violations																
Uncontrollable Non-Issued	31	28	32	29	44	52	64	51	45	47	45	35	42	38%	31	37%
Controllable Non-Issued	4	1	3	8	0	0	0	2	8	4	1	0	4	3%	3	4%
Citations	51	59	52	46	84	64	82	81	71	81	58	54	65	59%	50	60%
Total:	86	88	87	83	128	116	146	134	124	132	104	89	111	100%	84	100%
Non-Violations																
Rear Axle Violation	0	0	0	1	0	0	0	0	1	0	0	0	1	1%	1	1%
Emergency Vehicle	9	11	5	7	10	11	9	5	11	17	12	6	9	10%	13	12%
Right Turn	80	64	93	50	70	83	82	59	67	92	90	71	75	76%	70	66%
No Violation Occurred	16	13	17	12	17	12	23	12	13	8	5	14	14	14%	22	21%
Total:	105	88	115	70	97	106	114	76	92	117	107	91	99	100%	105	100%
Uncontrollable Non-Issued Violations																
No Plate	12	15	21	13	28	22	40	30	22	27	25	24	23	48%	15	33%
Out of State Plate	0	0	1	0	0	0	1	2	1	1	3	1	1	3%	3	6%
Glare on Plate	0	0	0	1	0	1	0	1	0	1	0	0	1	2%	2	5%
Illegible Plate	2	1	0	1	0	1	0	2	0	2	1	0	1	3%	2	3%
Plate Obstructed	2	0	1	0	1	1	2	1	2	0	1	1	1	3%	2	4%
Windshield Glare	0	0	4	3	7	11	4	1	1	0	1	0	4	8%	3	6%
Driver Obstructed	0	0	1	0	1	1	0	1	2	0	0	1	1	2%	2	3%
Car Obstructed	2	0	1	3	1	1	2	1	0	2	0	2	2	3%	2	3%
No DMV Match Found	12	11	3	8	5	11	14	10	16	13	12	4	10	20%	7	16%
LASD Expired	0	0	0	0	0	0	0	1	0	0	0	2	2	3%	5	11%
LASD Return	1	1	0	0	1	3	1	1	1	1	1	0	1	2%	2	4%
Yellow Interval Not Met	0	0	0	0	0	0	0	0	0	0	0	0	0	0%	0	0%
Other	0	0	0	0	0	0	0	0	0	0	1	0	1	2%	3	6%
Total:	31	28	32	29	44	52	64	51	45	47	45	35	49	100%	44	100%
Controllable Non-Issued Violations																
Framing of Plate	0	0	0	0	0	0	0	0	0	0	0	0	0	0%	0	0%
Focus / Clarity of Plate	0	0	0	0	0	0	0	1	0	0	0	0	1	6%	0	0%
Dark Interior	3	1	3	1	0	0	0	0	1	0	0	0	2	11%	1	7%
Framing of Driver	0	0	0	0	0	0	0	0	0	0	0	0	0	0%	0	0%
Focus / Clarity of Driver	1	0	0	0	0	0	0	0	0	0	0	0	1	6%	0	0%
Framing of Car	0	0	0	0	0	0	0	0	0	0	0	0	0	0%	0	0%
Operator / Data Error	0	0	0	7	0	0	0	0	7	0	0	0	7	42%	11	76%
Exposure	0	0	0	0	0	0	0	0	0	0	1	0	1	6%	0	0%
Equipment Malfunction	0	0	0	0	0	0	0	1	0	0	0	0	1	6%	1	7%
Xerox Expired	0	0	0	0	0	0	0	0	0	4	0	0	4	24%	2	10%
Total:	4	1	3	8	0	0	0	2	8	4	1	0	17	100%	15	100%
Summary Metrics													Year to Date Average		2012 Average	
Daily Ave Vehicle Passes	13,073	13,059	12,952	14,726	13,868	13,285	13,986	13,589	13,328	13,409	12,985	12,253	13,376		14,097	
Ave Issued Speed	39	40	37	40	38	38	38	38	44	38	39	40	39		40	
Ave Issued Red Seconds	0.4	0.4	0.4	0.4	1.1	0.4	0.5	0.9	0.5	0.6	0.5	0.4	1		0.8	
Citation / Violation Iss Rate	59%	67%	60%	55%	66%	55%	56%	60%	57%	61%	56%	61%	60%		61%	
Controllable Iss Rate	93%	98%	95%	85%	100%	100%	100%	98%	90%	95%	98%	100%	96%		97%	



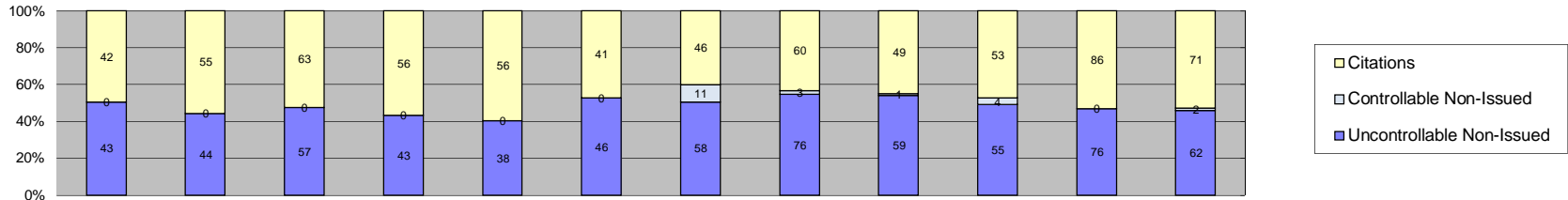
**City of West Hollywood
Approach Summary Report
Location 3133: E/B Melrose @ La Cienega (GLD-4 Camera System)**



Events	Jan-13	Feb-13	Mar-13	Apr-13	May-13	Jun-13	Jul-13	Aug-13	Sep-13	Oct-13	Nov-13	Dec-13	Year to Date Average		2012 Average	
													Quantity	%	Quantity	%
Non-Violations	0	0	0	0	0	0	0	0	0	0	0	20	20	43%	29	41%
Violations	0	0	0	0	0	0	0	0	0	0	0	26	26	57%	42	59%
Total:	0	0	0	0	0	0	0	0	0	0	0	46	46	100%	71	100%
Violations																
Uncontrollable Non-Issued	0	0	0	0	0	0	0	0	0	0	0	18	18	69%	34	81%
Controllable Non-Issued	0	0	0	0	0	0	0	0	0	0	0	1	1	4%	1	2%
Citations	0	0	0	0	0	0	0	0	0	0	0	7	7	27%	7	17%
Total:	0	0	0	0	0	0	0	0	0	0	0	26	26	100%	42	100%
Non-Violations																
Rear Axle Violation	0	0	0	0	0	0	0	0	0	0	0	0	0	0%	1	3%
Emergency Vehicle	0	0	0	0	0	0	0	0	0	0	0	1	1	5%	1	3%
Right Turn	0	0	0	0	0	0	0	0	0	0	0	8	8	40%	13	45%
No Violation Occurred	0	0	0	0	0	0	0	0	0	0	0	11	11	55%	14	48%
Total:	0	0	0	0	0	0	0	0	0	0	0	20	20	100%	29	100%
Uncontrollable Non-Issued Violations																
No Plate	0	0	0	0	0	0	0	0	0	0	0	10	10	56%	7	21%
Out of State Plate	0	0	0	0	0	0	0	0	0	0	0	0	0	0%	2	6%
Glare on Plate	0	0	0	0	0	0	0	0	0	0	0	0	0	0%	1	3%
Illegible Plate	0	0	0	0	0	0	0	0	0	0	0	5	5	28%	14	41%
Plate Obstructed	0	0	0	0	0	0	0	0	0	0	0	0	0	0%	2	6%
Windshield Glare	0	0	0	0	0	0	0	0	0	0	0	0	0	0%	6	18%
Driver Obstructed	0	0	0	0	0	0	0	0	0	0	0	0	0	0%	1	3%
Car Obstructed	0	0	0	0	0	0	0	0	0	0	0	1	1	6%	0	0%
No DMV Match Found	0	0	0	0	0	0	0	0	0	0	0	1	1	6%	1	3%
LASD Expired	0	0	0	0	0	0	0	0	0	0	0	1	1	6%	0	0%
LASD Return	0	0	0	0	0	0	0	0	0	0	0	0	0	0%	0	0%
Yellow Interval Not Met	0	0	0	0	0	0	0	0	0	0	0	0	0	0%	0	0%
Other	0	0	0	0	0	0	0	0	0	0	0	0	0	0%	0	0%
Total:	0	0	0	0	0	0	0	0	0	0	0	18	18	100%	34	100%
Controllable Non-Issued Violations																
Framing of Plate	0	0	0	0	0	0	0	0	0	0	0	0	0	0%	1	100%
Focus / Clarity of Plate	0	0	0	0	0	0	0	0	0	0	0	0	0	0%	0	0%
Dark Interior	0	0	0	0	0	0	0	0	0	0	0	0	0	0%	0	0%
Framing of Driver	0	0	0	0	0	0	0	0	0	0	0	0	0	0%	0	0%
Focus / Clarity of Driver	0	0	0	0	0	0	0	0	0	0	0	0	0	0%	0	0%
Framing of Car	0	0	0	0	0	0	0	0	0	0	0	0	0	0%	0	0%
Operator / Data Error	0	0	0	0	0	0	0	0	0	0	0	0	0	0%	0	0%
Exposure	0	0	0	0	0	0	0	0	0	0	0	0	0	0%	0	0%
Equipment Malfunction	0	0	0	0	0	0	0	0	0	0	0	1	1	100%	0	0%
Xerox Expired	0	0	0	0	0	0	0	0	0	0	0	0	0	0%	0	0%
Total:	0	0	0	0	0	0	0	0	0	0	0	1	1	100%	1	100%
Summary Metrics													Year to Date Average		2012 Average	
Daily Ave Vehicle Passes	0	0	0	0	0	0	0	0	0	0	0	9,584	9,584		7,980	
Ave Issued Speed	0	0	0	0	0	0	0	0	0	0	0	34	34		29	
Ave Issued Red Seconds	0	0	0	0	0	0	0	0	0	0	0	0.6	1		0.4	
Citation / Violation Iss Rate	0%	0%	0%	0%	0%	0%	0%	0%	0%	0%	0%	27%	27%		17%	
Controllable Iss Rate	0%	0%	0%	0%	0%	0%	0%	0%	0%	0%	0%	88%	88%		88%	



**City of West Hollywood
Approach Summary Report
Location 3141: N/B La Brea @ Fountain (GLD-4 Camera System)**

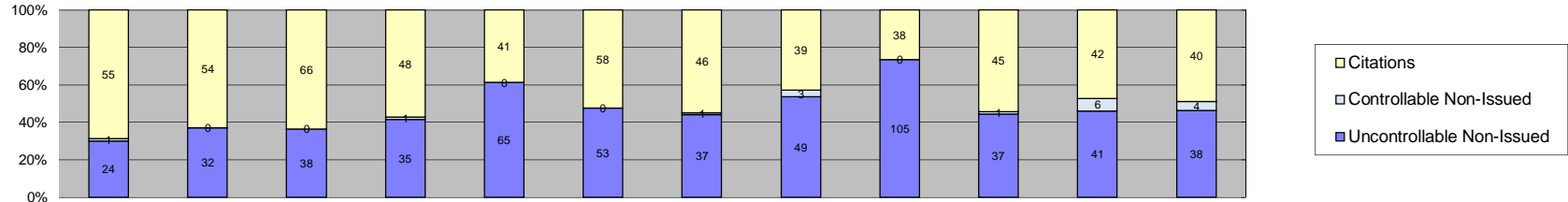


Events	Jan-13	Feb-13	Mar-13	Apr-13	May-13	Jun-13	Jul-13	Aug-13	Sep-13	Oct-13	Nov-13	Dec-13	Year to Date Average		2012 Average	
													Quantity	%	Quantity	%
Non-Violations	355	356	391	316	266	304	394	389	398	345	293	384	349	76%	442	62%
Violations	85	99	120	99	94	87	115	139	109	112	162	135	113	24%	266	38%
Total:	440	455	511	415	360	391	509	528	507	457	455	519	462	100%	709	100%
Violations																
Uncontrollable Non-Issued	43	44	57	43	38	46	58	76	59	55	76	62	55	47%	104	38%
Controllable Non-Issued	0	0	0	0	0	0	11	3	1	4	0	2	4	4%	10	4%
Citations	42	55	63	56	56	41	46	60	49	53	86	71	57	49%	156	58%
Total:	85	99	120	99	94	87	115	139	109	112	162	135	115	100%	271	100%
Non-Violations																
Rear Axle Violation	0	1	0	2	2	1	1	0	3	2	0	0	2	0%	3	1%
Emergency Vehicle	12	1	3	5	7	5	9	8	7	10	8	4	7	2%	7	1%
Right Turn	76	86	96	76	99	94	61	169	210	204	149	211	128	36%	120	27%
No Violation Occurred	267	268	292	233	158	204	323	212	178	129	136	169	214	61%	314	71%
Total:	355	356	391	316	266	304	394	389	398	345	293	384	350	100%	444	100%
Uncontrollable Non-Issued Violations																
No Plate	19	21	26	19	23	20	19	29	25	23	41	29	25	38%	44	40%
Out of State Plate	1	4	1	0	0	0	0	2	0	1	2	0	2	3%	7	7%
Glare on Plate	0	0	0	1	1	0	0	0	1	0	0	0	1	2%	1	1%
Illegible Plate	2	0	1	0	0	1	0	2	1	0	1	0	1	2%	1	1%
Plate Obstructed	0	1	3	0	0	0	0	1	0	1	0	0	2	2%	3	3%
Windshield Glare	12	4	16	10	8	9	25	23	10	12	8	15	13	20%	17	16%
Driver Obstructed	1	0	2	0	0	0	0	2	2	0	1	0	2	2%	2	1%
Car Obstructed	2	1	1	1	0	2	3	2	2	0	3	1	2	3%	4	3%
No DMV Match Found	5	12	6	11	6	13	11	12	17	17	16	12	12	18%	22	20%
LASD Expired	0	0	0	0	0	0	0	0	0	0	0	4	4	6%	2	2%
LASD Return	1	0	1	0	0	1	0	2	1	0	3	0	2	2%	5	4%
Yellow Interval Not Met	0	0	0	0	0	0	0	0	0	0	0	0	0	0%	0	0%
Other	0	1	0	1	0	0	0	1	0	1	1	1	1	2%	2	2%
Total:	43	44	57	43	38	46	58	76	59	55	76	62	64	100%	110	100%
Controllable Non-Issued Violations																
Framing of Plate	0	0	0	0	0	0	0	0	0	0	0	0	0	0%	0	0%
Focus / Clarity of Plate	0	0	0	0	0	0	0	0	0	0	0	0	0	0%	0	0%
Dark Interior	0	0	0	0	0	0	1	3	1	1	0	2	2	11%	3	17%
Framing of Driver	0	0	0	0	0	0	0	0	0	0	0	0	0	0%	0	0%
Focus / Clarity of Driver	0	0	0	0	0	0	0	0	0	1	0	0	1	7%	2	9%
Framing of Car	0	0	0	0	0	0	0	0	0	0	0	0	0	0%	0	0%
Operator / Data Error	0	0	0	0	0	0	0	0	0	0	0	0	0	0%	0	0%
Exposure	0	0	0	0	0	0	0	0	0	0	0	0	0	0%	0	0%
Equipment Malfunction	0	0	0	0	0	0	10	0	0	0	0	0	10	68%	11	68%
Xerox Expired	0	0	0	0	0	0	0	0	0	2	0	0	2	14%	1	6%
Total:	0	0	0	0	0	0	11	3	1	4	0	2	15	100%	16	100%
Summary Metrics													Year to Date Average		2012 Average	
Daily Ave Vehicle Passes	15,008	15,048	14,700	16,414	15,760	14,840	16,215	16,083	15,951	16,169	14,417	15,027	15,469		15,554	
Ave Issued Speed	28	32	32	32	31	32	32	31	30	32	30	30	31		29	
Ave Issued Red Seconds	0.5	0.7	0.6	0.5	0.5	0.7	0.5	0.6	0.5	0.5	1.1	0.6	1		0.6	
Citation / Violation Iss Rate	49%	56%	53%	57%	60%	47%	40%	43%	45%	47%	53%	53%	50%		58%	
Controllable Iss Rate	100%	100%	100%	100%	100%	100%	81%	95%	98%	93%	100%	97%	97%		97%	



City of West Hollywood Approach Summary Report

Location 3142: S/B La Brea @ Fountain (GLD-4 Camera System)

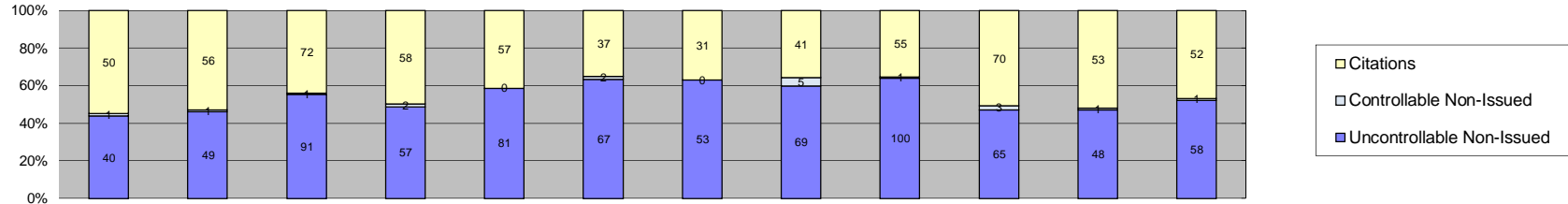


Events	Jan-13	Feb-13	Mar-13	Apr-13	May-13	Jun-13	Jul-13	Aug-13	Sep-13	Oct-13	Nov-13	Dec-13	Year to Date Average		2012 Average	
													Quantity	%	Quantity	%
Non-Violations	426	436	506	523	548	526	609	555	488	523	753	462	530	85%	572	73%
Violations	80	86	104	84	106	111	84	91	143	83	89	82	95	15%	209	27%
Total:	506	522	610	607	654	637	693	646	631	606	842	544	625	100%	782	100%
Violations																
Uncontrollable Non-Issued	24	32	38	35	65	53	37	49	105	37	41	38	46	48%	82	39%
Controllable Non-Issued	1	0	0	1	0	0	1	3	0	1	6	4	2	3%	4	2%
Citations	55	54	66	48	41	58	46	39	38	45	42	40	48	50%	124	59%
Total:	80	86	104	84	106	111	84	91	143	83	89	82	96	100%	210	100%
Non-Violations																
Rear Axle Violation	0	2	0	1	0	0	0	0	2	1	2	0	2	0%	4	1%
Emergency Vehicle	8	10	18	11	12	5	10	3	10	17	17	16	11	2%	10	2%
Right Turn	213	208	254	254	311	293	291	354	324	328	318	321	289	54%	292	51%
No Violation Occurred	205	216	234	257	225	228	308	198	152	177	416	125	228	43%	269	47%
Total:	426	436	506	523	548	526	609	555	488	523	753	462	531	100%	574	100%
Uncontrollable Non-Issued Violations																
No Plate	13	13	20	16	28	18	15	19	19	15	26	17	18	22%	39	44%
Out of State Plate	0	2	2	0	0	0	0	2	0	1	0	1	2	2%	7	7%
Glare on Plate	0	0	0	0	0	1	0	0	0	0	0	0	1	1%	1	2%
Illegible Plate	0	0	0	0	0	0	0	1	0	2	1	0	1	2%	2	2%
Plate Obstructed	0	1	1	0	1	2	0	1	0	2	0	1	1	2%	2	2%
Windshield Glare	3	4	8	8	21	19	11	9	4	5	2	2	8	10%	9	10%
Driver Obstructed	0	0	1	0	0	0	0	0	4	1	0	0	2	2%	3	3%
Car Obstructed	2	4	0	1	1	0	0	1	0	1	0	2	2	2%	4	4%
No DMV Match Found	6	6	6	10	10	7	11	12	10	9	8	10	9	10%	16	19%
LASD Expired	0	0	0	0	0	0	0	0	0	0	1	4	3	3%	2	2%
LASD Return	0	2	0	0	4	6	0	4	0	1	2	1	3	3%	4	4%
Yellow Interval Not Met	0	0	0	0	0	0	0	0	0	0	0	0	0	0%	0	0%
Other	0	0	0	0	0	0	0	0	68	0	1	0	35	41%	1	1%
Total:	24	32	38	35	65	53	37	49	105	37	41	38	84	100%	88	100%
Controllable Non-Issued Violations																
Framing of Plate	0	0	0	0	0	0	0	0	0	0	1	1	1	12%	1	9%
Focus / Clarity of Plate	0	0	0	0	0	0	0	0	0	0	0	0	0	0%	1	9%
Dark Interior	1	0	0	0	0	0	0	3	0	0	2	3	2	27%	3	22%
Framing of Driver	0	0	0	0	0	0	0	0	0	0	0	0	0	0%	0	0%
Focus / Clarity of Driver	0	0	0	1	0	0	0	0	0	0	0	0	1	12%	1	9%
Framing of Car	0	0	0	0	0	0	0	0	0	0	0	0	0	0%	1	9%
Operator / Data Error	0	0	0	0	0	0	0	0	0	0	2	0	2	24%	0	0%
Exposure	0	0	0	0	0	0	1	0	0	0	1	0	1	12%	2	13%
Equipment Malfunction	0	0	0	0	0	0	0	0	0	0	0	0	0	0%	2	17%
Xerox Expired	0	0	0	0	0	0	0	0	0	1	0	0	1	12%	2	13%
Total:	1	0	0	1	0	0	1	3	0	1	6	4	8	100%	12	100%
Summary Metrics													Year to Date Average		2012 Average	
Daily Ave Vehicle Passes	16,299	15,916	16,124	18,540	17,233	17,371	17,950	16,595	16,319	18,856	14,384	12,892	16,540		17,235	
Ave Issued Speed	34	35	31	32	34	30	32	31	39	35	33	33	33		32	
Ave Issued Red Seconds	0.6	0.5	0.7	0.6	0.5	0.8	0.8	0.6	1.0	0.7	0.5	0.7	1		0.6	
Citation / Violation Iss Rate	69%	63%	63%	57%	39%	52%	55%	43%	27%	54%	47%	49%	51%		58%	
Controllable Iss Rate	98%	100%	100%	98%	100%	100%	98%	93%	100%	98%	88%	91%	97%		97%	



City of West Hollywood Approach Summary Report

Location 3143: E/B Sunset @ La Cienega (GLD-4 Camera System)

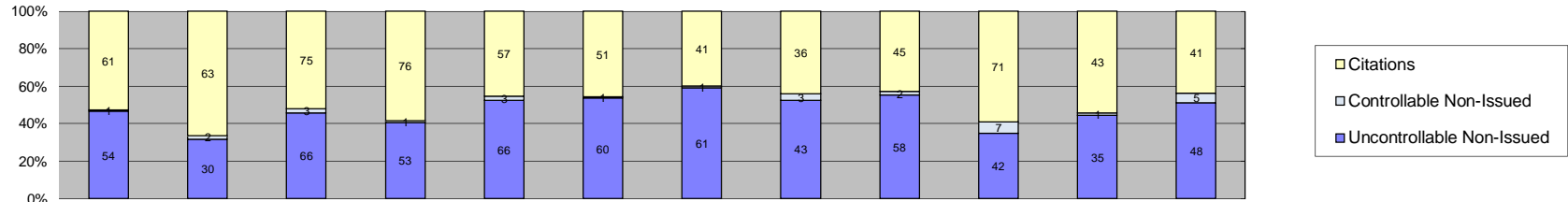


Events	Jan-13	Feb-13	Mar-13	Apr-13	May-13	Jun-13	Jul-13	Aug-13	Sep-13	Oct-13	Nov-13	Dec-13	Year to Date Average		2012 Average	
													Quantity	%	Quantity	%
Non-Violations	794	706	752	722	815	643	665	655	635	649	646	668	696	85%	619	87%
Violations	91	106	164	117	138	106	84	115	156	138	102	111	119	15%	92	13%
Total:	885	812	916	839	953	749	749	770	791	787	748	779	815	100%	711	100%
Violations																
Uncontrollable Non-Issued	40	49	91	57	81	67	53	69	100	65	48	58	65	54%	44	46%
Controllable Non-Issued	1	1	1	2	0	2	0	5	1	3	1	1	2	2%	2	2%
Citations	50	56	72	58	57	37	31	41	55	70	53	52	53	44%	48	52%
Total:	91	106	164	117	138	106	84	115	156	138	102	111	119	100%	94	100%
Non-Violations																
Rear Axle Violation	0	0	0	0	0	1	0	0	0	1	0	1	1	0%	1	0%
Emergency Vehicle	4	1	8	5	6	3	7	7	7	4	12	6	6	1%	7	1%
Right Turn	342	323	352	363	465	369	365	339	367	377	368	380	368	53%	300	48%
No Violation Occurred	448	382	392	354	344	270	293	309	261	267	266	281	322	46%	312	50%
Total:	794	706	752	722	815	643	665	655	635	649	646	668	697	100%	620	100%
Uncontrollable Non-Issued Violations																
No Plate	17	28	40	19	36	22	26	24	39	26	22	25	27	38%	17	33%
Out of State Plate	0	0	0	0	0	0	1	2	0	0	1	1	1	2%	2	4%
Glare on Plate	0	0	0	0	0	0	0	0	0	0	0	0	0	0%	1	2%
Illegible Plate	3	1	1	0	1	1	1	1	2	2	1	6	2	3%	2	3%
Plate Obstructed	0	0	2	2	1	0	0	2	0	3	0	2	2	3%	2	3%
Windshield Glare	8	8	27	23	26	28	15	16	33	18	8	8	18	25%	6	12%
Driver Obstructed	0	0	0	1	0	1	0	1	1	0	4	1	2	2%	1	2%
Car Obstructed	3	2	5	3	3	2	5	4	3	0	1	1	3	4%	3	6%
No DMV Match Found	5	6	11	8	8	8	4	10	17	14	9	8	9	13%	6	12%
LASD Expired	0	0	0	0	0	0	0	0	0	0	0	4	4	6%	3	5%
LASD Return	4	4	5	1	6	5	1	9	5	2	2	2	4	5%	4	8%
Yellow Interval Not Met	0	0	0	0	0	0	0	0	0	0	0	0	0	0%	4	7%
Other	0	0	0	0	0	0	0	0	0	0	0	0	0	0%	1	2%
Total:	40	49	91	57	81	67	53	69	100	65	48	58	71	100%	52	100%
Controllable Non-Issued Violations																
Framing of Plate	0	0	0	0	0	0	0	0	0	0	0	0	0	0%	0	0%
Focus / Clarity of Plate	0	0	0	0	0	0	0	0	0	0	0	0	0	0%	1	20%
Dark Interior	1	1	1	2	0	0	0	4	1	0	1	0	2	24%	2	40%
Framing of Driver	0	0	0	0	0	0	0	0	0	0	0	0	0	0%	0	0%
Focus / Clarity of Driver	0	0	0	0	0	0	0	1	0	0	0	0	1	15%	0	0%
Framing of Car	0	0	0	0	0	0	0	0	0	0	0	0	0	0%	0	0%
Operator / Data Error	0	0	0	0	0	0	0	0	0	0	0	0	0	0%	0	0%
Exposure	0	0	0	0	0	2	0	0	0	0	0	0	2	30%	0	0%
Equipment Malfunction	0	0	0	0	0	0	0	0	0	0	0	0	0	0%	1	20%
Xerox Expired	0	0	0	0	0	0	0	0	0	3	0	1	2	30%	1	20%
Total:	1	1	1	2	0	2	0	5	1	3	1	1	7	100%	5	100%
Summary Metrics													Year to Date Average		2012 Average	
Daily Ave Vehicle Passes	17,807	17,681	17,737	19,960	18,963	19,215	19,394	19,031	19,282	19,437	17,385	17,553	18,620		18,561	
Ave Issued Speed	29	30	29	29	29	29	30	24	17	28	29	30	28		29	
Ave Issued Red Seconds	1.5	1.5	1.9	1.1	1.7	2.3	1.2	1.9	0.7	0.7	1.9	0.8	1		0.8	
Citation / Violation Iss Rate	55%	53%	44%	50%	41%	35%	37%	36%	35%	51%	52%	47%	45%		52%	
Controllable Iss Rate	98%	98%	99%	97%	100%	95%	100%	89%	98%	96%	98%	98%	97%		99%	



City of West Hollywood
Approach Summary Report

Location 3144: W/B Sunset @ La Cienega (GLD-4 Camera System)

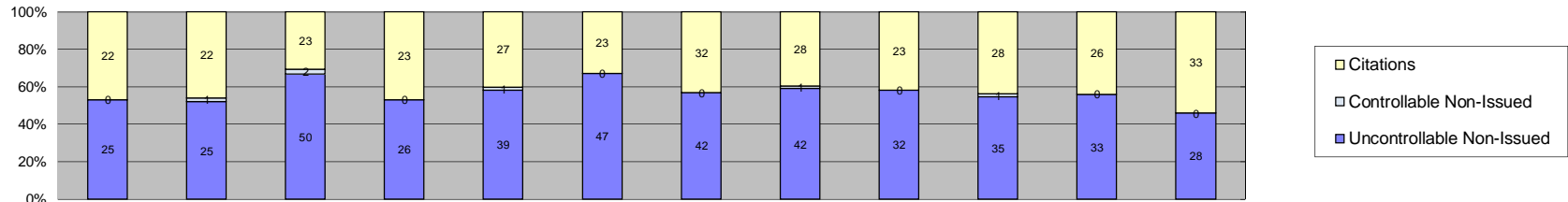


Events	Jan-13	Feb-13	Mar-13	Apr-13	May-13	Jun-13	Jul-13	Aug-13	Sep-13	Oct-13	Nov-13	Dec-13	Year to Date Average		2012 Average	
													Quantity	%	Quantity	%
Non-Violations	35	34	35	33	38	33	35	29	37	40	34	19	34	24%	38	23%
Violations	116	95	144	130	126	112	103	82	105	120	79	94	109	76%	126	77%
Total:	151	129	179	163	164	145	138	111	142	160	113	113	142	100%	165	100%
Violations																
Uncontrollable Non-Issued	54	30	66	53	66	60	61	43	58	42	35	48	51	47%	58	46%
Controllable Non-Issued	1	2	3	1	3	1	1	3	2	7	1	5	3	2%	3	2%
Citations	61	63	75	76	57	51	41	36	45	71	43	41	55	51%	66	52%
Total:	116	95	144	130	126	112	103	82	105	120	79	94	109	100%	127	100%
Non-Violations																
Rear Axle Violation	1	2	3	1	3	0	1	1	2	1	1	0	2	5%	2	4%
Emergency Vehicle	4	3	4	5	5	8	3	8	4	7	11	4	6	16%	8	21%
Right Turn	4	12	12	8	10	13	16	7	7	13	9	4	10	28%	8	20%
No Violation Occurred	26	17	16	19	20	12	15	13	24	19	13	11	17	51%	21	54%
Total:	35	34	35	33	38	33	35	29	37	40	34	19	34	100%	38	100%
Uncontrollable Non-Issued Violations																
No Plate	25	12	31	17	23	23	24	15	22	16	16	15	20	35%	21	29%
Out of State Plate	0	2	1	0	0	1	0	1	0	0	0	2	1	2%	2	3%
Glare on Plate	1	0	0	0	0	0	0	1	0	2	0	0	1	2%	2	3%
Illegible Plate	5	2	6	4	2	1	3	1	6	3	6	8	4	7%	2	3%
Plate Obstructed	3	0	4	1	1	3	2	0	4	1	1	0	2	4%	2	3%
Windshield Glare	2	1	10	14	19	22	18	9	8	7	3	1	10	17%	9	13%
Driver Obstructed	1	1	0	2	0	1	0	1	0	2	1	1	1	2%	1	2%
Car Obstructed	1	6	8	6	6	6	3	1	3	2	2	7	4	7%	4	6%
No DMV Match Found	12	5	4	8	8	3	7	12	14	7	4	9	8	14%	8	12%
LASD Expired	0	0	0	0	0	0	0	0	0	0	1	4	3	4%	4	6%
LASD Return	3	1	2	1	7	0	4	1	1	2	1	1	2	4%	4	6%
Yellow Interval Not Met	0	0	0	0	0	0	0	0	0	0	0	0	0	0%	9	12%
Other	1	0	0	0	0	0	0	1	0	0	0	0	1	2%	1	1%
Total:	54	30	66	53	66	60	61	43	58	42	35	48	57	100%	70	100%
Controllable Non-Issued Violations																
Framing of Plate	0	1	0	0	0	0	0	0	0	0	0	1	1	10%	1	12%
Focus / Clarity of Plate	0	0	0	0	0	0	0	0	0	0	0	0	0	0%	1	12%
Dark Interior	1	1	2	1	3	1	1	3	2	1	1	3	2	17%	1	13%
Framing of Driver	0	0	0	0	0	0	0	0	0	0	0	0	0	0%	1	16%
Focus / Clarity of Driver	0	0	0	0	0	0	0	0	0	1	0	0	1	10%	0	0%
Framing of Car	0	0	1	0	0	0	0	0	0	0	0	1	1	10%	2	24%
Operator / Data Error	0	0	0	0	0	0	0	0	0	0	0	0	0	0%	1	12%
Exposure	0	0	0	0	0	0	0	0	0	0	0	0	0	0%	0	0%
Equipment Malfunction	0	0	0	0	0	0	0	0	0	0	0	0	0	0%	0	0%
Xerox Expired	0	0	0	0	0	0	0	0	0	5	0	0	5	52%	1	12%
Total:	1	2	3	1	3	1	1	3	2	7	1	5	10	100%	8	100%
Summary Metrics													Year to Date Average		2012 Average	
Daily Ave Vehicle Passes	16,956	16,709	16,485	18,741	17,923	17,709	18,921	18,437	18,547	19,391	17,080	16,814	17,809		17,960	
Ave Issued Speed	32	33	31	31	32	31	31	32	28	32	29	31	31		31	
Ave Issued Red Seconds	1.8	0.5	1.0	0.9	0.5	0.5	2.8	0.6	2.6	0.9	0.6	1.9	1		0.9	
Citation / Violation Iss Rate	53%	66%	52%	58%	45%	46%	40%	44%	43%	59%	54%	44%	50%		53%	
Controllable Iss Rate	98%	97%	96%	99%	95%	98%	98%	92%	96%	91%	98%	89%	96%		96%	



City of West Hollywood Approach Summary Report

Location 3151: N/B Fairfax @ Santa Monica (GLD-4 Camera System)

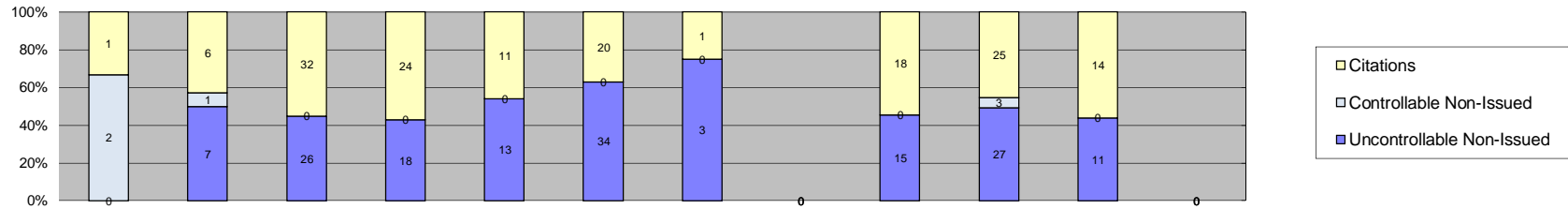


Events	Jan-13	Feb-13	Mar-13	Apr-13	May-13	Jun-13	Jul-13	Aug-13	Sep-13	Oct-13	Nov-13	Dec-13	Year to Date Average		2012 Average	
													Quantity	%	Quantity	%
Non-Violations	8	16	8	7	7	11	13	10	10	10	17	22	12	16%	11	16%
Violations	47	48	75	49	67	70	74	71	55	64	59	61	62	84%	60	84%
Total:	55	64	83	56	74	81	87	81	65	74	76	83	73	100%	71	100%
Violations																
Uncontrollable Non-Issued	25	25	50	26	39	47	42	42	32	35	33	28	35	57%	29	48%
Controllable Non-Issued	0	1	2	0	1	0	0	1	0	1	0	0	1	2%	1	2%
Citations	22	22	23	23	27	23	32	28	23	28	26	33	26	41%	30	50%
Total:	47	48	75	49	67	70	74	71	55	64	59	61	62	100%	60	100%
Non-Violations																
Rear Axle Violation	1	3	0	1	0	0	2	0	0	0	0	1	2	12%	3	19%
Emergency Vehicle	0	1	1	0	2	0	1	2	2	1	1	6	2	14%	2	17%
Right Turn	0	0	0	0	0	0	0	0	0	0	1	0	1	7%	1	7%
No Violation Occurred	7	12	7	6	5	11	10	8	8	9	15	15	9	68%	8	58%
Total:	8	16	8	7	7	11	13	10	10	10	17	22	14	100%	14	100%
Uncontrollable Non-Issued Violations																
No Plate	10	10	17	5	11	16	9	9	15	12	12	12	12	28%	12	33%
Out of State Plate	0	0	0	0	1	1	1	0	0	0	0	0	1	2%	3	9%
Glare on Plate	2	1	2	2	1	1	5	2	0	0	1	0	2	5%	2	5%
Illegible Plate	1	1	4	3	3	6	6	4	6	4	5	2	4	9%	1	3%
Plate Obstructed	2	2	2	1	1	3	2	4	0	1	1	0	2	5%	2	6%
Windshield Glare	3	2	12	7	12	5	2	7	7	4	4	1	6	13%	3	9%
Driver Obstructed	0	0	0	0	0	1	1	2	0	1	1	1	1	3%	1	3%
Car Obstructed	3	4	8	2	6	6	8	2	1	5	3	1	4	10%	3	9%
No DMV Match Found	4	4	4	6	4	7	7	11	3	8	5	7	6	14%	4	11%
LASD Expired	0	0	0	0	0	0	0	0	0	0	0	3	3	7%	1	4%
LASD Return	0	1	1	0	0	1	0	1	0	0	1	1	1	2%	2	4%
Yellow Interval Not Met	0	0	0	0	0	0	0	0	0	0	0	0	0	0%	0	0%
Other	0	0	0	0	0	0	1	0	0	0	0	0	1	2%	1	3%
Total:	25	25	50	26	39	47	42	42	32	35	33	28	42	100%	35	100%
Controllable Non-Issued Violations																
Framing of Plate	0	0	0	0	0	0	0	0	0	0	0	0	0	0%	1	20%
Focus / Clarity of Plate	0	0	0	0	0	0	0	0	0	0	0	0	0	0%	1	20%
Dark Interior	0	0	2	0	0	0	0	1	0	1	0	0	1	40%	1	20%
Framing of Driver	0	0	0	0	0	0	0	0	0	0	0	0	0	0%	0	0%
Focus / Clarity of Driver	0	0	0	0	0	0	0	0	0	0	0	0	0	0%	0	0%
Framing of Car	0	0	0	0	0	0	0	0	0	0	0	0	0	0%	1	20%
Operator / Data Error	0	0	0	0	0	0	0	0	0	0	0	0	0	0%	0	0%
Exposure	0	0	0	0	0	0	0	0	0	0	0	0	0	0%	1	20%
Equipment Malfunction	0	1	0	0	0	0	0	0	0	0	0	0	1	30%	0	0%
Xerox Expired	0	0	0	0	1	0	0	0	0	0	0	0	1	30%	0	0%
Total:	0	1	2	0	1	0	0	1	0	1	0	0	3	100%	5	100%
Summary Metrics													Year to Date Average		2012 Average	
Daily Ave Vehicle Passes	9,847	9,465	9,663	11,626	10,750	10,042	11,492	11,133	10,718	11,787	11,084	11,327	10,745		10,961	
Ave Issued Speed	29	30	29	29	30	29	28	26	39	27	29	30	29		32	
Ave Issued Red Seconds	0.4	2.2	0.4	0.5	0.4	0.4	0.3	1.9	0.4	0.4	0.5	1.1	1		0.5	
Citation / Violation Iss Rate	47%	46%	31%	47%	40%	33%	43%	39%	42%	44%	44%	54%	42%		49%	
Controllable Iss Rate	100%	96%	92%	100%	96%	100%	100%	97%	100%	97%	100%	100%	98%		98%	



City of West Hollywood Approach Summary Report

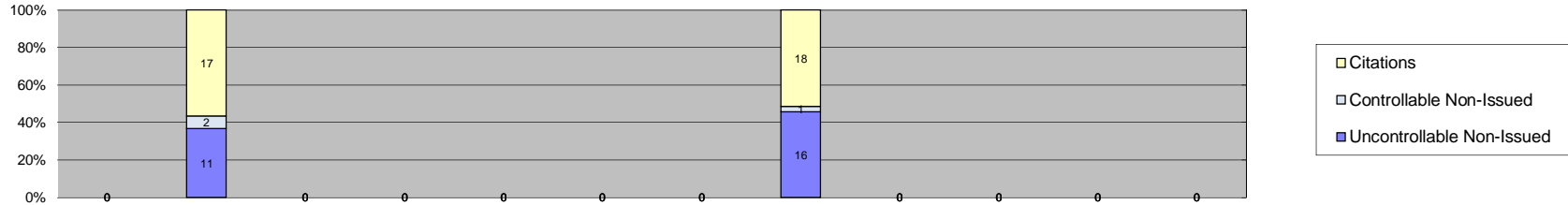
Location 3152: S/B Fairfax @ Santa Monica (GLD-4 Camera System)



Events	Jan-13	Feb-13	Mar-13	Apr-13	May-13	Jun-13	Jul-13	Aug-13	Sep-13	Oct-13	Nov-13	Dec-13	Year to Date Average		2012 Average	
													Quantity	%	Quantity	%
Non-Violations	0	8	21	23	14	22	0	0	18	30	8	0	18	37%	22	33%
Violations	3	14	58	42	24	54	4	0	33	55	25	0	31	63%	44	67%
Total:	3	22	79	65	38	76	4	0	51	85	33	0	49	100%	67	100%
Violations																
Uncontrollable Non-Issued	0	7	26	18	13	34	3	0	15	27	11	0	17	50%	21	45%
Controllable Non-Issued	2	1	0	0	0	0	0	0	0	3	0	0	2	6%	3	7%
Citations	1	6	32	24	11	20	1	0	18	25	14	0	15	44%	21	47%
Total:	3	14	58	42	24	54	4	0	33	55	25	0	34	100%	45	100%
Non-Violations																
Rear Axle Violation	0	0	2	0	0	0	0	0	0	0	0	0	2	10%	1	6%
Emergency Vehicle	0	4	4	6	5	6	0	0	4	6	3	0	5	24%	7	30%
Right Turn	0	3	8	4	2	6	0	0	4	5	2	0	4	22%	4	18%
No Violation Occurred	0	1	7	13	7	10	0	0	10	19	3	0	9	44%	11	46%
Total:	0	8	21	23	14	22	0	0	18	30	8	0	20	100%	24	100%
Uncontrollable Non-Issued Violations																
No Plate	0	0	12	7	5	13	2	0	8	8	3	0	7	29%	9	31%
Out of State Plate	0	0	0	0	0	0	0	0	0	0	0	0	0	0%	2	7%
Glare on Plate	0	0	0	1	0	6	0	0	0	0	0	0	4	14%	1	5%
Illegible Plate	0	1	2	2	0	2	0	0	1	3	4	0	2	9%	1	5%
Plate Obstructed	0	0	2	0	0	1	0	0	0	3	1	0	2	7%	2	6%
Windshield Glare	0	0	1	0	0	2	1	0	0	1	0	0	1	5%	2	7%
Driver Obstructed	0	1	1	0	0	0	0	0	1	2	0	0	1	5%	1	5%
Car Obstructed	0	0	3	5	3	3	0	0	1	2	1	0	3	10%	2	8%
No DMV Match Found	0	4	4	3	5	5	0	0	3	6	2	0	4	16%	3	10%
LASD Expired	0	0	0	0	0	0	0	0	0	0	0	0	0	0%	2	7%
LASD Return	0	1	1	0	0	2	0	0	1	2	0	0	1	6%	2	6%
Yellow Interval Not Met	0	0	0	0	0	0	0	0	0	0	0	0	0	0%	0	0%
Other	0	0	0	0	0	0	0	0	0	0	0	0	0	0%	1	4%
Total:	0	7	26	18	13	34	3	0	15	27	11	0	25	100%	28	100%
Controllable Non-Issued Violations																
Framing of Plate	0	0	0	0	0	0	0	0	0	0	0	0	0	0%	0	0%
Focus / Clarity of Plate	0	0	0	0	0	0	0	0	0	0	0	0	0	0%	1	7%
Dark Interior	0	1	0	0	0	0	0	0	0	0	0	0	1	17%	3	17%
Framing of Driver	0	0	0	0	0	0	0	0	0	0	0	0	0	0%	0	0%
Focus / Clarity of Driver	0	0	0	0	0	0	0	0	0	0	0	0	0	0%	0	0%
Framing of Car	0	0	0	0	0	0	0	0	0	0	0	0	0	0%	2	10%
Operator / Data Error	0	0	0	0	0	0	0	0	0	1	0	0	1	17%	4	26%
Exposure	0	0	0	0	0	0	0	0	0	0	0	0	0	0%	0	0%
Equipment Malfunction	2	0	0	0	0	0	0	0	0	0	0	0	2	33%	5	33%
Xerox Expired	0	0	0	0	0	0	0	0	0	2	0	0	2	33%	1	7%
Total:	2	1	0	0	0	0	0	0	0	3	0	0	6	100%	15	100%
Summary Metrics													Year to Date Average		2012 Average	
Daily Ave Vehicle Passes	9,626	9,273	9,825	10,742	10,170	10,084	13,271	0	14,993	10,468	9,859	0	10,831		10,464	
Ave Issued Speed	41	31	32	32	32	35	25	0	30	31	32	0	32		34	
Ave Issued Red Seconds	1.2	0.7	0.4	0.3	4.9	0.5	0.3	0	1.2	2.3	0.4	0	1		1.0	
Citation / Violation Iss Rate	33%	43%	55%	57%	46%	37%	25%	0%	55%	45%	56%	0%	45%		49%	
Controllable Iss Rate	33%	86%	100%	100%	100%	100%	100%	0%	100%	89%	100%	0%	91%		89%	



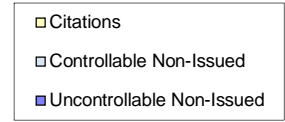
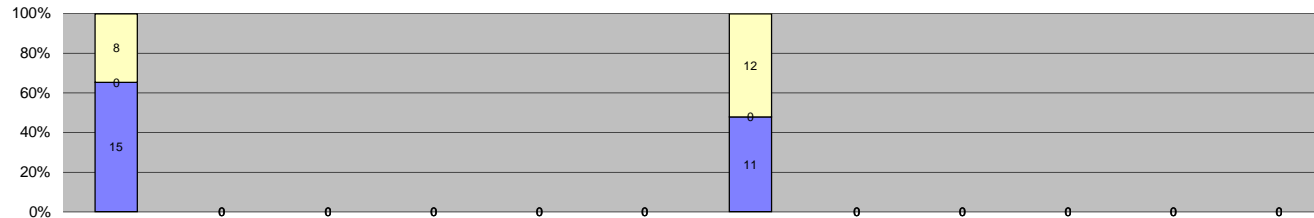
**City of West Hollywood
Approach Summary Report
Location 3153: E/B Santa Monica @ Fairfax (GLD-4 Camera System)**



Events	Jan-13	Feb-13	Mar-13	Apr-13	May-13	Jun-13	Jul-13	Aug-13	Sep-13	Oct-13	Nov-13	Dec-13	Year to Date Average		2012 Average	
													Quantity	%	Quantity	%
Non-Violations	0	25	1	0	0	0	0	33	0	0	0	0	20	38%	24	41%
Violations	0	30	0	0	0	0	0	35	0	0	0	0	33	62%	35	59%
Total:	0	55	1	0	0	0	0	68	0	0	0	0	52	100%	59	100%
Violations																
Uncontrollable Non-Issued	0	11	0	0	0	0	0	16	0	0	0	0	14	42%	27	47%
Controllable Non-Issued	0	2	0	0	0	0	0	1	0	0	0	0	2	5%	17	30%
Citations	0	17	0	0	0	0	0	18	0	0	0	0	18	54%	13	23%
Total:	0	30	0	0	0	0	0	35	0	0	0	0	33	100%	57	100%
Non-Violations																
Rear Axle Violation	0	1	0	0	0	0	0	0	0	0	0	0	1	4%	1	4%
Emergency Vehicle	0	3	0	0	0	0	0	4	0	0	0	0	4	13%	5	18%
Right Turn	0	11	1	0	0	0	0	8	0	0	0	0	7	25%	11	37%
No Violation Occurred	0	10	0	0	0	0	0	21	0	0	0	0	16	58%	12	41%
Total:	0	25	1	0	0	0	0	33	0	0	0	0	27	100%	28	100%
Uncontrollable Non-Issued Violations																
No Plate	0	8	0	0	0	0	0	8	0	0	0	0	8	42%	13	48%
Out of State Plate	0	1	0	0	0	0	0	0	0	0	0	0	1	5%	1	4%
Glare on Plate	0	0	0	0	0	0	0	2	0	0	0	0	2	11%	2	7%
Illegible Plate	0	0	0	0	0	0	0	0	0	0	0	0	0	0%	0	0%
Plate Obstructed	0	0	0	0	0	0	0	1	0	0	0	0	1	5%	3	11%
Windshield Glare	0	0	0	0	0	0	0	4	0	0	0	0	4	21%	1	4%
Driver Obstructed	0	0	0	0	0	0	0	0	0	0	0	0	0	0%	0	0%
Car Obstructed	0	0	0	0	0	0	0	1	0	0	0	0	1	5%	1	4%
No DMV Match Found	0	2	0	0	0	0	0	0	0	0	0	0	2	11%	5	19%
LASD Expired	0	0	0	0	0	0	0	0	0	0	0	0	0	0%	0	0%
LASD Return	0	0	0	0	0	0	0	0	0	0	0	0	0	0%	0	0%
Yellow Interval Not Met	0	0	0	0	0	0	0	0	0	0	0	0	0	0%	0	0%
Other	0	0	0	0	0	0	0	0	0	0	0	0	0	0%	1	4%
Total:	0	11	0	0	0	0	0	16	0	0	0	0	19	100%	27	100%
Controllable Non-Issued Violations																
Framing of Plate	0	0	0	0	0	0	0	0	0	0	0	0	0	0%	0	0%
Focus / Clarity of Plate	0	0	0	0	0	0	0	0	0	0	0	0	0	0%	0	0%
Dark Interior	0	0	0	0	0	0	0	1	0	0	0	0	1	33%	0	0%
Framing of Driver	0	0	0	0	0	0	0	0	0	0	0	0	0	0%	0	0%
Focus / Clarity of Driver	0	0	0	0	0	0	0	0	0	0	0	0	0	0%	0	0%
Framing of Car	0	0	0	0	0	0	0	0	0	0	0	0	0	0%	0	0%
Operator / Data Error	0	2	0	0	0	0	0	0	0	0	0	0	2	67%	17	100%
Exposure	0	0	0	0	0	0	0	0	0	0	0	0	0	0%	0	0%
Equipment Malfunction	0	0	0	0	0	0	0	0	0	0	0	0	0	0%	0	0%
Xerox Expired	0	0	0	0	0	0	0	0	0	0	0	0	0	0%	0	0%
Total:	0	2	0	0	0	0	0	1	0	0	0	0	3	100%	17	100%
Summary Metrics													Year to Date Average		2012 Average	
Daily Ave Vehicle Passes	0	14,280	0	0	0	0	0	15,447	9,180	0	0	0	12,969		15,279	
Ave Issued Speed	0	34	0	0	0	0	0	28	0	0	0	0	31		26	
Ave Issued Red Seconds	0	0.4	0	0	0	0	0	0.7	0	0	0	0	1		0.5	
Citation / Violation Iss Rate	0%	57%	0%	0%	0%	0%	0%	51%	0%	0%	0%	0%	54%		68%	
Controllable Iss Rate	0%	89%	0%	0%	0%	0%	0%	95%	0%	0%	0%	0%	92%		79%	



**City of West Hollywood
Approach Summary Report
Location 3154: W/B Santa Monica @ Fairfax (GLD-4 Camera System)**

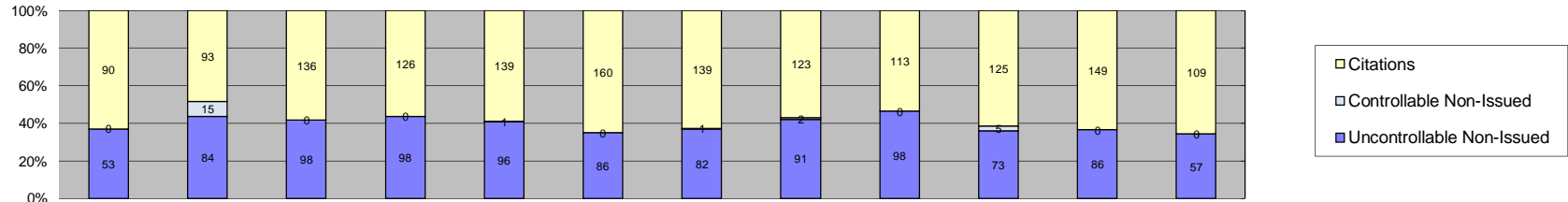


Events	Jan-13	Feb-13	Mar-13	Apr-13	May-13	Jun-13	Jul-13	Aug-13	Sep-13	Oct-13	Nov-13	Dec-13	Year to Date Average		2012 Average			
													Quantity	%	Quantity	%		
Non-Violations	100	0	0	0	0	0	56	0	0	0	0	0	0	78	77%	84	82%	
Violations	23	0	0	0	0	0	23	0	0	0	0	0	0	23	23%	18	18%	
Total:	123	0	0	0	0	0	79	0	0	0	0	0	0	101	100%	102	100%	
Violations																		
Uncontrollable Non-Issued	15	0	0	0	0	0	11	0	0	0	0	0	0	13	57%	13	72%	
Controllable Non-Issued	0	0	0	0	0	0	0	0	0	0	0	0	0	0	0%	1	6%	
Citations	8	0	0	0	0	0	12	0	0	0	0	0	0	10	43%	4	22%	
Total:	23	0	0	0	0	0	23	0	0	0	0	0	0	23	100%	18	100%	
Non-Violations																		
Rear Axle Violation	0	0	0	0	0	0	0	0	0	0	0	0	0	0	0%	0	0%	
Emergency Vehicle	20	0	0	0	0	0	16	0	0	0	0	0	0	18	23%	18	21%	
Right Turn	41	0	0	0	0	0	22	0	0	0	0	0	0	32	40%	41	49%	
No Violation Occurred	39	0	0	0	0	0	18	0	0	0	0	0	0	29	37%	25	30%	
Total:	100	0	0	0	0	0	56	0	0	0	0	0	0	78	100%	84	100%	
Uncontrollable Non-Issued Violations																		
No Plate	4	0	0	0	0	0	6	0	0	0	0	0	0	5	31%	4	31%	
Out of State Plate	1	0	0	0	0	0	0	0	0	0	0	0	0	1	6%	3	23%	
Glare on Plate	1	0	0	0	0	0	0	0	0	0	0	0	0	1	6%	1	8%	
Illegible Plate	6	0	0	0	0	0	1	0	0	0	0	0	0	4	22%	0	0%	
Plate Obstructed	1	0	0	0	0	0	0	0	0	0	0	0	0	1	6%	1	8%	
Windshield Glare	0	0	0	0	0	0	1	0	0	0	0	0	0	1	6%	1	8%	
Driver Obstructed	0	0	0	0	0	0	0	0	0	0	0	0	0	0	0%	0	0%	
Car Obstructed	0	0	0	0	0	0	2	0	0	0	0	0	0	2	13%	0	0%	
No DMV Match Found	2	0	0	0	0	0	1	0	0	0	0	0	0	2	9%	1	8%	
LASD Expired	0	0	0	0	0	0	0	0	0	0	0	0	0	0	0%	0	0%	
LASD Return	0	0	0	0	0	0	0	0	0	0	0	0	0	0	0%	2	15%	
Yellow Interval Not Met	0	0	0	0	0	0	0	0	0	0	0	0	0	0	0%	0	0%	
Other	0	0	0	0	0	0	0	0	0	0	0	0	0	0	0%	0	0%	
Total:	15	0	0	0	0	0	11	0	0	0	0	0	0	16	100%	13	100%	
Controllable Non-Issued Violations																		
Framing of Plate	0	0	0	0	0	0	0	0	0	0	0	0	0	0	0	0	0	0%
Focus / Clarity of Plate	0	0	0	0	0	0	0	0	0	0	0	0	0	0	0	0	1	100%
Dark Interior	0	0	0	0	0	0	0	0	0	0	0	0	0	0	0	0	0	0%
Framing of Driver	0	0	0	0	0	0	0	0	0	0	0	0	0	0	0	0	0	0%
Focus / Clarity of Driver	0	0	0	0	0	0	0	0	0	0	0	0	0	0	0	0	0	0%
Framing of Car	0	0	0	0	0	0	0	0	0	0	0	0	0	0	0	0	0	0%
Operator / Data Error	0	0	0	0	0	0	0	0	0	0	0	0	0	0	0	0	0	0%
Exposure	0	0	0	0	0	0	0	0	0	0	0	0	0	0	0	0	0	0%
Equipment Malfunction	0	0	0	0	0	0	0	0	0	0	0	0	0	0	0	0	0	0%
Xerox Expired	0	0	0	0	0	0	0	0	0	0	0	0	0	0	0	0	0	0%
Total:	0	0	0	0	0	0	0	0	0	0	0	0	0	0	0%	1	100%	
Summary Metrics													Year to Date Average		2012 Average			
Daily Ave Vehicle Passes	14,039	0	0	0	0	0	16,882	0	0	0	0	0	0	15,460		14,550		
Ave Issued Speed	30	0	0	0	0	0	25	0	0	0	0	0	0	27		26		
Ave Issued Red Seconds	0.3	0	0	0	0	0	0.2	0	0	0	0	0	0	0		0.3		
Citation / Violation Iss Rate	35%	0%	0%	0%	0%	0%	52%	0%	0%	0%	0%	0%	0%	43%		22%		
Controllable Iss Rate	100%	0%	0%	0%	0%	0%	100%	0%	0%	0%	0%	0%	0%	100%		80%		



City of West Hollywood
Approach Summary Report

Location 3161: N/B La Brea @ Santa Monica (GLD-4 Camera System)

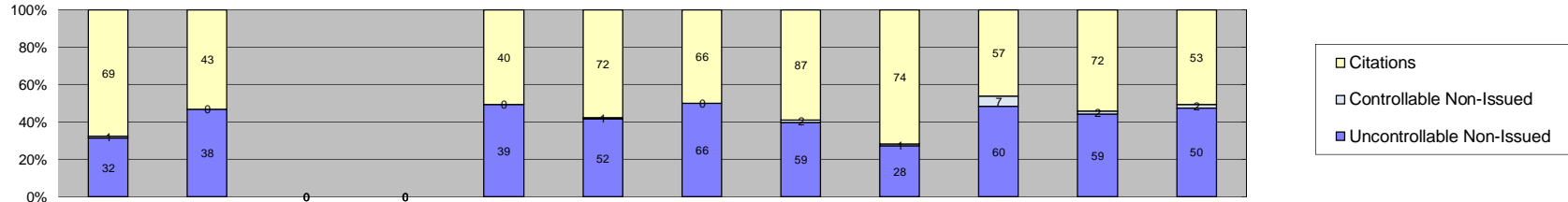


Events	Jan-13	Feb-13	Mar-13	Apr-13	May-13	Jun-13	Jul-13	Aug-13	Sep-13	Oct-13	Nov-13	Dec-13	Year to Date Average		2012 Average	
													Quantity	%	Quantity	%
Non-Violations	130	126	146	130	145	154	152	149	141	147	118	140	140	40%	106	44%
Violations	143	192	234	224	236	246	222	216	211	203	235	166	211	60%	134	56%
Total:	273	318	380	354	381	400	374	365	352	350	353	306	351	100%	240	100%
Violations																
Uncontrollable Non-Issued	53	84	98	98	96	86	82	91	98	73	86	57	84	39%	52	39%
Controllable Non-Issued	0	15	0	0	1	0	1	2	0	5	0	0	5	2%	1	1%
Citations	90	93	136	126	139	160	139	123	113	125	149	109	125	59%	81	60%
Total:	143	192	234	224	236	246	222	216	211	203	235	166	213	100%	134	100%
Non-Violations																
Rear Axle Violation	2	4	1	3	2	2	2	2	2	2	0	2	2	2%	3	3%
Emergency Vehicle	6	7	0	1	6	3	4	3	4	3	3	2	4	3%	4	4%
Right Turn	65	53	80	61	83	84	67	93	93	100	87	88	80	57%	51	48%
No Violation Occurred	57	62	65	65	54	65	79	51	42	42	28	48	55	39%	48	45%
Total:	130	126	146	130	145	154	152	149	141	147	118	140	140	100%	106	100%
Uncontrollable Non-Issued Violations																
No Plate	31	36	42	38	39	38	42	42	53	36	45	25	39	42%	24	38%
Out of State Plate	1	6	5	2	1	0	0	6	0	3	5	1	3	4%	5	7%
Glare on Plate	0	4	0	0	0	1	0	0	0	0	1	0	2	2%	2	3%
Illegible Plate	0	8	1	0	1	0	0	1	3	1	1	1	2	2%	1	2%
Plate Obstructed	2	2	2	2	0	3	1	2	4	2	3	2	2	2%	2	3%
Windshield Glare	0	8	18	16	14	10	8	15	9	8	1	2	10	11%	4	7%
Driver Obstructed	0	0	0	1	1	2	2	1	1	0	0	0	1	1%	1	2%
Car Obstructed	3	5	11	6	7	6	1	6	1	4	5	0	5	5%	2	3%
No DMV Match Found	16	15	19	31	28	25	28	17	24	18	21	20	22	24%	13	21%
LASD Expired	0	0	0	0	0	0	0	0	1	0	1	4	2	2%	7	10%
LASD Return	0	0	0	2	5	0	0	1	2	1	3	2	2	2%	2	3%
Yellow Interval Not Met	0	0	0	0	0	0	0	0	0	0	0	0	0	0%	0	0%
Other	0	0	0	0	0	1	0	0	0	0	0	0	1	1%	1	2%
Total:	53	84	98	98	96	86	82	91	98	73	86	57	92	100%	64	100%
Controllable Non-Issued Violations																
Framing of Plate	0	0	0	0	0	0	0	0	0	0	0	0	0	0%	0	0%
Focus / Clarity of Plate	0	0	0	0	0	0	0	0	0	0	0	0	0	0%	0	0%
Dark Interior	0	0	0	0	0	0	0	1	0	0	0	0	1	4%	1	20%
Framing of Driver	0	0	0	0	0	0	0	0	0	0	0	0	0	0%	0	0%
Focus / Clarity of Driver	0	0	0	0	0	0	0	0	0	0	0	0	0	0%	0	0%
Framing of Car	0	14	0	0	0	0	0	0	0	0	0	0	14	61%	2	40%
Operator / Data Error	0	1	0	0	0	0	0	0	0	0	0	0	1	4%	0	0%
Exposure	0	0	0	0	0	0	1	1	0	0	0	0	1	4%	1	20%
Equipment Malfunction	0	0	0	0	1	0	0	0	0	0	0	0	1	4%	0	0%
Xerox Expired	0	0	0	0	0	0	0	0	0	5	0	0	5	22%	1	20%
Total:	0	15	0	0	1	0	1	2	0	5	0	0	23	100%	5	100%
Summary Metrics													Year to Date Average		2012 Average	
Daily Ave Vehicle Passes	16,297	16,209	16,124	17,030	16,169	16,785	17,602	16,811	15,204	17,210	15,718	16,523	16,474		16,943	
Ave Issued Speed	31	29	28	30	28	29	28	28	35	29	28	32	30		32	
Ave Issued Red Seconds	0.4	0.5	0.4	0.4	0.4	0.4	0.7	0.7	0.8	0.8	1.0	0.8	1		0.4	
Citation / Violation Iss Rate	63%	48%	58%	56%	59%	65%	63%	57%	54%	62%	63%	66%	59%		61%	
Controllable Iss Rate	100%	86%	100%	100%	99%	100%	99%	98%	100%	96%	100%	100%	98%		99%	

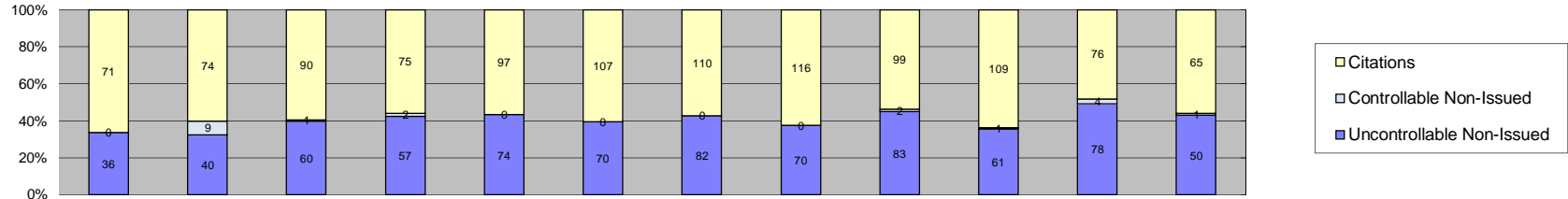


City of West Hollywood
Approach Summary Report

Location 3162: S/B La Brea @ Santa Monica (GLD-4 Camera System)



Events	Jan-13	Feb-13	Mar-13	Apr-13	May-13	Jun-13	Jul-13	Aug-13	Sep-13	Oct-13	Nov-13	Dec-13	Year to Date Average		2012 Average	
													Quantity	%	Quantity	%
Non-Violations	304	190	0	0	133	214	221	257	222	259	246	212	226	67%	253	72%
Violations	102	81	0	0	79	125	132	148	103	124	133	105	113	33%	100	28%
Total:	406	271	0	0	212	339	353	405	325	383	379	317	339	100%	352	100%
Violations																
Uncontrollable Non-Issued	32	38	0	0	39	52	66	59	28	60	59	50	48	42%	41	41%
Controllable Non-Issued	1	0	0	0	0	1	0	2	1	7	2	2	2	2%	1	1%
Citations	69	43	0	0	40	72	66	87	74	57	72	53	63	56%	57	57%
Total:	102	81	0	0	79	125	132	148	103	124	133	105	114	100%	100	100%
Non-Violations																
Rear Axle Violation	0	0	0	0	0	0	0	1	6	2	1	0	3	1%	1	1%
Emergency Vehicle	5	0	0	0	3	3	1	7	10	6	4	3	5	2%	7	3%
Right Turn	42	46	0	0	47	79	59	112	101	149	137	112	88	39%	62	25%
No Violation Occurred	257	144	0	0	83	132	161	137	105	102	104	97	132	58%	182	72%
Total:	304	190	0	0	133	214	221	257	222	259	246	212	228	100%	253	100%
Uncontrollable Non-Issued Violations																
No Plate	21	18	0	0	15	20	24	27	13	30	26	30	22	39%	19	37%
Out of State Plate	0	3	0	0	0	0	0	2	0	0	1	1	2	3%	3	6%
Glare on Plate	0	0	0	0	0	1	3	0	0	1	0	0	2	3%	1	2%
Illegible Plate	0	0	0	0	2	0	1	0	1	3	0	0	2	3%	1	2%
Plate Obstructed	0	3	0	0	1	1	4	2	1	2	5	1	2	4%	2	4%
Windshield Glare	0	2	0	0	6	15	11	6	2	6	6	1	6	11%	3	5%
Driver Obstructed	0	0	0	0	1	0	1	0	1	1	0	0	1	2%	1	2%
Car Obstructed	3	1	0	0	2	5	4	3	1	1	6	3	3	5%	2	5%
No DMV Match Found	7	8	0	0	11	9	17	17	8	15	11	7	11	19%	9	18%
LASD Expired	0	0	0	0	0	0	0	0	0	0	1	6	4	6%	5	9%
LASD Return	1	2	0	0	0	1	1	2	1	1	1	0	1	2%	3	5%
Yellow Interval Not Met	0	0	0	0	0	0	0	0	0	0	0	0	0	0%	0	0%
Other	0	1	0	0	1	0	0	0	0	0	2	1	1	2%	3	5%
Total:	32	38	0	0	39	52	66	59	28	60	59	50	57	100%	51	100%
Controllable Non-Issued Violations																
Framing of Plate	0	0	0	0	0	0	0	0	0	0	0	0	0	0%	0	0%
Focus / Clarity of Plate	0	0	0	0	0	0	0	0	0	0	0	0	0	0%	1	14%
Dark Interior	1	0	0	0	0	1	0	2	1	3	2	2	2	30%	1	16%
Framing of Driver	0	0	0	0	0	0	0	0	0	0	0	0	0	0%	1	14%
Focus / Clarity of Driver	0	0	0	0	0	0	0	0	0	0	0	0	0	0%	0	0%
Framing of Car	0	0	0	0	0	0	0	0	0	0	0	0	0	0%	0	0%
Operator / Data Error	0	0	0	0	0	0	0	0	0	0	0	0	0	0%	1	14%
Exposure	0	0	0	0	0	0	0	0	0	0	0	0	0	0%	2	28%
Equipment Malfunction	0	0	0	0	0	0	0	0	0	0	0	0	0	0%	0	0%
Xerox Expired	0	0	0	0	0	0	0	0	0	4	0	0	4	70%	1	14%
Total:	1	0	0	0	0	1	0	2	1	7	2	2	6	100%	7	100%
Summary Metrics													Year to Date Average		2012 Average	
Daily Ave Vehicle Passes	15,471	14,627	0	0	15,820	13,188	15,694	15,007	13,752	12,566	13,384	12,222	14,173		16,084	
Ave Issued Speed	30	30	0	0	33	32	33	30	30	30	31	33	31		31	
Ave Issued Red Seconds	0.4	0.5	0	0	0.4	0.4	0.4	0.4	0.4	0.4	0.4	0.4	0		0.5	
Citation / Violation Iss Rate	68%	53%	0%	0%	51%	58%	50%	59%	72%	46%	54%	50%	56%		58%	
Controllable Iss Rate	99%	100%	0%	0%	100%	99%	100%	98%	99%	89%	97%	96%	98%		98%	

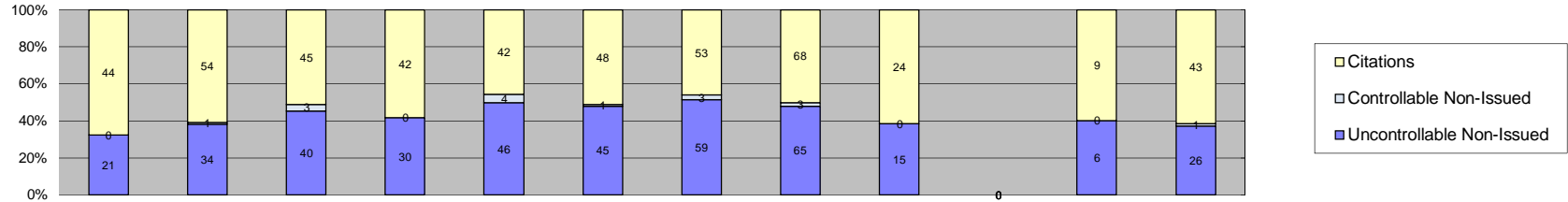


Events	Jan-13	Feb-13	Mar-13	Apr-13	May-13	Jun-13	Jul-13	Aug-13	Sep-13	Oct-13	Nov-13	Dec-13	Year to Date Average		2012 Average	
													Quantity	%	Quantity	%
Non-Violations	52	48	42	45	48	58	62	48	53	49	39	52	50	24%	43	25%
Violations	107	123	151	134	171	177	192	186	184	171	158	116	156	76%	131	75%
Total:	159	171	193	179	219	235	254	234	237	220	197	168	206	100%	174	100%
Violations																
Uncontrollable Non-Issued	36	40	60	57	74	70	82	70	83	61	78	50	63	40%	51	39%
Controllable Non-Issued	0	9	1	2	0	0	0	0	2	1	4	1	3	2%	2	2%
Citations	71	74	90	75	97	107	110	116	99	109	76	65	91	58%	79	60%
Total:	107	123	151	134	171	177	192	186	184	171	158	116	157	100%	132	100%
Non-Violations																
Rear Axle Violation	0	2	0	0	1	0	1	0	0	0	0	0	1	3%	2	4%
Emergency Vehicle	3	1	3	1	2	3	1	0	5	5	1	1	2	5%	2	5%
Right Turn	33	27	27	27	30	36	35	33	36	36	24	38	32	63%	25	57%
No Violation Occurred	16	18	12	17	15	19	25	15	12	8	14	13	15	30%	15	34%
Total:	52	48	42	45	48	58	62	48	53	49	39	52	51	100%	44	100%
Uncontrollable Non-Issued Violations																
No Plate	17	28	20	28	28	28	37	30	35	30	39	25	29	41%	21	36%
Out of State Plate	0	1	5	0	2	0	0	4	1	2	6	1	3	4%	5	9%
Glare on Plate	0	0	0	0	1	0	0	0	0	1	1	0	1	1%	2	3%
Illegible Plate	1	1	1	0	1	1	2	2	2	5	8	0	2	3%	2	4%
Plate Obstructed	2	1	1	0	2	6	3	1	0	0	1	2	2	3%	1	2%
Windshield Glare	1	3	6	11	8	8	9	8	6	2	3	0	6	8%	7	11%
Driver Obstructed	0	0	0	0	1	1	0	1	1	0	0	2	1	2%	1	2%
Car Obstructed	2	2	7	2	3	5	4	1	3	3	2	1	3	4%	3	4%
No DMV Match Found	12	4	20	14	26	18	24	22	34	17	17	15	19	26%	11	19%
LASD Expired	0	0	0	0	0	0	0	0	0	0	1	4	3	4%	3	5%
LASD Return	1	0	0	1	2	3	3	1	0	1	0	0	2	2%	2	3%
Yellow Interval Not Met	0	0	0	0	0	0	0	0	0	0	0	0	0	0%	0	0%
Other	0	0	0	1	0	0	0	0	1	0	0	0	1	1%	1	2%
Total:	36	40	60	57	74	70	82	70	83	61	78	50	71	100%	59	100%
Controllable Non-Issued Violations																
Framing of Plate	0	0	0	0	0	0	0	0	0	0	0	0	0	0%	1	15%
Focus / Clarity of Plate	0	0	0	0	0	0	0	0	0	0	0	0	0	0%	1	15%
Dark Interior	0	3	1	2	0	0	0	0	2	0	3	1	2	20%	2	27%
Framing of Driver	0	0	0	0	0	0	0	0	0	0	0	0	0	0%	0	0%
Focus / Clarity of Driver	0	0	0	0	0	0	0	0	0	0	0	0	0	0%	0	0%
Framing of Car	0	0	0	0	0	0	0	0	0	0	0	0	0	0%	1	20%
Operator / Data Error	0	0	0	0	0	0	0	0	0	0	0	0	0	0%	0	0%
Exposure	0	0	0	0	0	0	0	0	0	0	1	0	1	10%	0	0%
Equipment Malfunction	0	6	0	0	0	0	0	0	0	0	0	0	6	60%	0	0%
Xerox Expired	0	0	0	0	0	0	0	0	0	1	0	0	1	10%	2	23%
Total:	0	9	1	2	0	0	0	0	2	1	4	1	10	100%	7	100%
Summary Metrics													Year to Date Average		2012 Average	
Daily Ave Vehicle Passes	16,083	15,661	15,825	16,486	15,533	15,708	16,980	16,524	16,251	17,202	15,071	15,028	16,029		16,343	
Ave Issued Speed	31	30	30	30	30	30	28	28	31	29	30	30	30		29	
Ave Issued Red Seconds	0.4	0.4	0.3	0.4	0.4	0.3	0.4	0.4	0.4	0.4	0.4	0.4	0		0.5	
Citation / Violation Iss Rate	66%	60%	60%	56%	57%	60%	57%	62%	54%	64%	48%	56%	58%		61%	
Controllable Iss Rate	100%	89%	99%	97%	100%	100%	100%	100%	98%	99%	95%	98%	98%		98%	



City of West Hollywood
Approach Summary Report

Location 3164: W/B Santa Monica @ La Brea (GLD-4 Camera System)



Events	Jan-13	Feb-13	Mar-13	Apr-13	May-13	Jun-13	Jul-13	Aug-13	Sep-13	Oct-13	Nov-13	Dec-13	Year to Date Average		2012 Average	
													Quantity	%	Quantity	%
Non-Violations	33	24	29	30	29	30	37	43	13	0	15	36	29	27%	23	25%
Violations	65	89	88	72	92	94	115	136	39	0	15	70	80	73%	70	75%
Total:	98	113	117	102	121	124	152	179	52	0	30	106	109	100%	93	100%
Violations																
Uncontrollable Non-Issued	21	34	40	30	46	45	59	65	15	0	6	26	35	44%	29	40%
Controllable Non-Issued	0	1	3	0	4	1	3	3	0	0	0	1	2	3%	2	3%
Citations	44	54	45	42	42	48	53	68	24	0	9	43	43	53%	40	56%
Total:	65	89	88	72	92	94	115	136	39	0	15	70	80	100%	71	100%
Non-Violations																
Rear Axle Violation	0	1	0	0	0	1	0	2	0	0	0	0	1	4%	1	4%
Emergency Vehicle	4	4	3	7	4	2	2	1	1	0	2	3	3	10%	4	15%
Right Turn	13	9	19	13	21	15	23	22	9	0	9	24	16	54%	12	51%
No Violation Occurred	16	10	7	10	4	12	12	18	3	0	4	9	10	32%	7	30%
Total:	33	24	29	30	29	30	37	43	13	0	15	36	30	100%	24	100%
Uncontrollable Non-Issued Violations																
No Plate	12	18	19	13	19	19	19	21	8	0	1	11	15	34%	13	35%
Out of State Plate	0	2	2	0	0	1	0	2	0	0	0	0	2	4%	2	6%
Glare on Plate	0	0	0	0	0	2	0	0	0	0	0	0	2	5%	0	0%
Illegible Plate	0	0	0	0	0	0	0	0	0	0	0	0	0	0%	0	0%
Plate Obstructed	1	1	0	1	0	1	1	2	0	0	0	2	1	3%	2	5%
Windshield Glare	2	2	13	5	12	14	20	20	0	0	1	2	9	21%	3	9%
Driver Obstructed	0	0	0	0	0	0	0	0	0	0	0	0	0	0%	2	4%
Car Obstructed	1	5	1	0	1	2	0	2	1	0	0	2	2	4%	2	6%
No DMV Match Found	5	4	5	11	12	6	19	18	6	0	4	7	9	20%	9	25%
LASD Expired	0	0	0	0	0	0	0	0	0	0	0	2	2	5%	3	7%
LASD Return	0	2	0	0	2	0	0	0	0	0	0	0	2	5%	1	3%
Yellow Interval Not Met	0	0	0	0	0	0	0	0	0	0	0	0	0	0%	0	0%
Other	0	0	0	0	0	0	0	0	0	0	0	0	0	0%	0	0%
Total:	21	34	40	30	46	45	59	65	15	0	6	26	43	100%	37	100%
Controllable Non-Issued Violations																
Framing of Plate	0	0	0	0	0	0	0	0	0	0	0	1	1	24%	0	0%
Focus / Clarity of Plate	0	0	0	0	0	0	0	0	0	0	0	0	0	0%	0	0%
Dark Interior	0	0	1	0	2	0	1	0	0	0	0	0	1	32%	0	0%
Framing of Driver	0	0	0	0	0	0	0	0	0	0	0	0	0	0%	0	0%
Focus / Clarity of Driver	0	0	0	0	0	0	0	0	0	0	0	0	0	0%	0	0%
Framing of Car	0	0	0	0	0	0	0	0	0	0	0	0	0	0%	0	0%
Operator / Data Error	0	0	0	0	0	0	0	0	0	0	0	0	0	0%	0	0%
Exposure	0	0	0	0	0	0	0	0	0	0	0	0	0	0%	2	43%
Equipment Malfunction	0	1	2	0	2	1	2	3	0	0	0	0	2	44%	2	57%
Xerox Expired	0	0	0	0	0	0	0	0	0	0	0	0	0	0%	0	0%
Total:	0	1	3	0	4	1	3	3	0	0	0	1	4	100%	4	100%
Summary Metrics													Year to Date Average		2012 Average	
Daily Ave Vehicle Passes	15,172	14,845	14,879	15,752	16,019	14,669	16,844	16,210	13,425	0	14,021	12,971	14,982		15,591	
Ave Issued Speed	33	32	34	35	35	35	31	31	33	0	31	34	33		31	
Ave Issued Red Seconds	0.3	0.4	0.4	0.4	0.4	0.3	0.4	0.8	0.4	0	0.4	0.4	0		0.4	
Citation / Violation Iss Rate	68%	61%	51%	58%	46%	51%	46%	50%	62%	0%	60%	61%	56%		53%	
Controllable Iss Rate	100%	98%	94%	100%	91%	98%	95%	96%	100%	0%	100%	98%	97%		98%	



Calls For Information

Reason for Call	Dec-13	3 Month Average	Year to Date Average	Year to Date Total	2012 Average
<i>Appointment</i>	25	23	29	352	28
<i>Bail</i>	9	17	21	246	26
<i>Complaint</i>	0	0	0	1	0
<i>Contest Violation</i>	28	26	24	292	33
<i>Courtesy Notice</i>	0	2	3	31	12
<i>Explain Citation</i>	12	7	9	109	6
<i>Explain Court</i>	0	0	0	2	0
<i>Explain the Project</i>	0	0	0	0	0
<i>Extension</i>	15	4	7	81	10
<i>Other</i>	0	0	0	0	0
<i>Affidavit of Non-Liability</i>	28	20	21	254	26
<i>Affidavit of Non-Liability Status</i>	0	0	1	14	2
<i>Traffic School</i>	4	9	7	80	7
Total Calls	121	109	122	1,462	150

Administrative Processing	Dec-13	3 Month Average	Year to Date Average	Year to Date Total	2012 Average
Appointments Scheduled	17	21	25	299	23
Affidavits of Non-Liability Processed	394	214	248	2,972	263
Court Packets Prepared	92	101	94	1133	85
Trial By Declaration Packets Prepared	7	28	26	316	N/A



City of West Hollywood
Monthly Citation Yield - By Location
December 2013

Direction	Location	Code	Days of Enforcement	Events	Violations	Citations	Yield*
EB	Beverly & Robertson	3103	31	173	136	87	2.8
WB	Beverly & Robertson	3104	31	189	179	81	2.6
NB	Fairfax & Fountain	3111	31	183	157	60	1.9
SB	Fairfax & Fountain	3112	31	46	39	23	0.7
EB	Fountain & Fairfax	3113	0	0	0	0	NA
NB	Crescent Heights & Fountain	3121	31	50	25	12	0.4
SB	Crescent Heights & Fountain	3122	31	39	20	10	0.3
EB	Fountain & Crescent Heights	3123	0	0	0	0	NA
WB	Fountain & Crescent Heights	3124	3	4	0	0	0.0
NB	La Cienega & Melrose	3131	31	169	144	69	2.2
SB	La Cienega & Melrose	3132	31	180	89	54	1.7
EB	Melrose & La Cienega	3133	28	46	26	7	0.3
NB	La Brea & Fountain	3141	31	519	135	71	2.3
SB	La Brea & Fountain	3142	31	544	82	40	1.3
EB	Sunset & La Cienega	3143	31	779	111	52	1.7
WB	Sunset & La Cienega	3144	31	113	94	41	1.3
NB	Fairfax & Santa Monica	3151	31	83	61	33	1.1
SB	Fairfax & Santa Monica	3152	0	0	0	0	NA
EB	Santa Monica & Fairfax	3153	0	0	0	0	NA
WB	Santa Monica & Fairfax	3154	0	0	0	0	NA
NB	La Brea & Santa Monica	3161	31	306	166	109	3.5
SB	La Brea & Santa Monica	3162	31	317	105	53	1.7
EB	Santa Monica & La Brea	3163	31	168	116	65	2.1
WB	Santa Monica & La Brea	3164	31	106	70	43	1.4
Totals			Average Days of Enf. 29.4	4,014	1,755	910	31

*Yield is the average number of citations issued per day of enforcement.

- Location not active (Part of Rotation Schedule)
- Location active (Part of Rotation Schedule or In Place of Damaged Location)



City of West Hollywood
Camera Rotation Log
December 2013

DATE	3103	3104	3111	3112	3113	3121	3122	3123	3124	3131	3132	3133	3141	3142	3143	3144	3151	3152	3153	3154	3161	3162	3163	3164	
12/01/13																									
12/02/13	1374/60	1847/74	1510/72	1605/26		1105/22	1133/2		1921/12r	1504/54	1151/70		1234/150	1241/184	1054/266	1887/24	1270/20				1162/116	1149/106	1478/74	1140/8	
12/03/13			1510/6	1605/0									1234/24	1241/32			1270/2				1162/12	1149/22	1478/4	1140/4	
12/04/13	1374/12	1847/20				1105/10	1133/4			1504/18	1151/22	1921/0i			1054/102	1887/10									
12/05/13			1510/24	1605/6									1234/70	1241/78			1270/12				1162/42	1144/28	1478/30	1140/10	
12/06/13	1374/28	1847/32				1105/4	1133/6			1504/26	1151/24	1921/6			1054/98	1887/28									
12/07/13																									
12/08/13			1510/40	1605/4									1234/90	1241/92			1270/14				1162/98	1149/2	1478/40	1140/32	
12/09/13	1374/26	1847/38				1105/10	1133/4			1504/30	1151/36	1921/8			1054/186	1887/26									
12/10/13			1510/22	1605/4									1234/68	1241/72			1270/18				1162/34	1149/44	1478/22	1140/14	
12/11/13	1374/36	1847/12				1105/0	1133/6			1504/30	1151/24	1921/6			1054/80	1887/18									
12/12/13	1374/18	1847/12	1510/16	1605/2		1105/0	1133/2			1504/10	1151/16	1921/4	1234/86	1241/70	1054/30	1887/4	1270/10				1162/22	1149/38	1478/20	1140/10	
12/13/13																									
12/14/13																									
12/15/13																									
12/16/13	1374/74	1847/56	1510/46	1605/28		1105/20	1133/14			1504/56	1151/50	1921/24	1234/88	1241/124	1054/182	1887/34	1270/24				1162/78	1149/116	1478/52	1140/32	
12/17/13			1510/16	1605/2									1234/44	1241/30			1270/4				1162/18	1149/18	1478/10	1140/4	
12/18/13			1510/10	1605/2									1234/60	1241/52			1270/6				1162/26	1149/24	1478/14	1140/16	
12/19/13	1374/36	1847/30				1105/10	1133/8			1504/32	1151/40	1921/8			1054/146	1887/12									
12/20/13	1374/10	1847/12				1105/8	1133/4			1504/10	1151/18	1921/4			1054/60	1887/4									
12/21/13																									
12/22/13																									
12/23/13	1374/18	1847/44	1510/70	1605/8		1105/2	1133/22			1504/36	1151/26	1921/12	1234/206	1241/186	1054/178	1887/18	1270/24				1162/114	1149/132	1478/56	1140/28	
12/24/13	1374/6	1847/12	1510/10	1605/8		1105/0	1133/0			1504/4	1151/14	1921/4	1234/40	1241/28	1054/68	1887/10	1270/6				1162/12	1149/28	1478/12	1140/6	
12/25/13																									
12/26/13			1510/22	1605/2									1234/78	1241/72			1270/10				1162/24	1149/50	1478/10	1140/4	
12/27/13	1374/26	1847/32				1105/8	1133/4			1504/14	1151/32	1921/16			1054/164	1887/20									
12/28/13																									
12/29/13																									
12/30/13	1374/26	1847/50	1510/42	1605/20		1105/22	1133/4			1504/30	1151/8	1921/4	1234/126	1241/144	1054/134	1887/30	1270/26				1162/76	1149/88	1478/28	1140/36	
12/31/13	1374/12	1847/6	1510/18	1605/4		1105/2	1133/2			1504/14	1151/16	1921/0	1234/32	1241/42	1054/42	1887/10	1270/12				1162/26	1149/18	1478/14	1140/10	

3103 = EB Beverly & Robertson
3104 = WB Beverly & Robertson
3111 = NB Fairfax & Fountain
3112 = SB Fairfax & Fountain
3113 = EB Fountain & Fairfax

3121 = NB Crescent Heights & Fountain
3122 = SB Crescent Heights & Fountain
3123 = EB Fountain & Crescent Heights
3124 = WB Fountain & Crescent Heights
3131 = NB La Cienega & Melrose

3132 = SB La Cienega & Melrose
3133 = EB Melrose & La Cienega
3141 = NB La Brea & Fountain
3142 = SB La Brea & Fountain
3143 = EB Sunset & La Cienega

3144 = WB Sunset & La Cienega
3151 = NB Fairfax & Santa Monica
3152 = SB Fairfax & Santa Monica
3153 = EB Santa Monica & Fairfax
3154 = WB Santa Monica & Fairfax

3161 = NB La Brea & Santa Monica
3162 = SB La Brea & Santa Monica
3163 = EB Santa Monica & La Brea
3164 = WB Santa Monica & La Brea

	Weekend
	Holiday
	Location Not Active (Rotation Schedule)
	Location Active (Rotation Schedule or In Place of Damaged Location)
	Location Out of Service (Damaged)



City of West Hollywood
Disposition Summary Report
December 2013

	Dec-13		3 Month Average		YTD Total		YTD Average		2012 Average	
Disposition Type	Count /Amount Paid		Count /Amount Paid		Count /Amount Paid		Count /Amount Paid		Count /Amount Paid	
<i>Bail Forfeiture</i>	176	\$88,830	227	\$116,611	3,385	\$1,747,836	282	\$145,653	305	\$153,544
<i>Fine Paid</i>	30	\$15,045	61	\$30,805	576	\$299,019	48	\$24,918	42	\$22,430
<i>Department Void</i>	0	\$0	0	\$0	0	\$0	0	\$0	0	\$0
<i>Not Guilty</i>	421	\$0	330	\$0	5,040	\$0	420	\$0	334	\$0
<i>Section D Void</i>	394	\$0	214	\$0	2,972	\$0	248	\$0	280	\$0
<i>Traffic School</i>	185	\$98,956	177	\$92,536	2,040	\$1,063,827	170	\$88,652	164	\$87,223
Court Gross Total	1206	\$202,831	1,007	\$239,952	14,013	\$3,110,682	1,168	\$259,224	1,125	\$263,196
City Gross Total*	391	\$57,529	464	\$68,195	6,001	\$881,556	500	\$73,463	511	\$75,062

*Logic built on following model (assuming the new 2009 fine and fee structure):

City receives \$146.31 of \$446.00 citation where bail forfeiture and fine paid occurs

City receives \$148.05 of \$509.00 citation when traffic school option is paid for



City of West Hollywood
Performance Report
December 2013

	<u>Total</u> <u>Events</u>	<u>Non</u> <u>Violations</u>	<u>Percent</u> <u>Citable</u>	<u>Potential</u> <u>Violations</u>	<u>Initial</u> <u>Rejects</u>	<u>Actual</u> <u>Violations</u>	<u>N/A</u> <u>Returns</u>	<u>Police/</u> <u>Client</u> <u>Rejected</u>	<u>Issuance</u> <u>Rate</u>	<u>Citations</u> <u>Issued</u>	<u>Fine</u> <u>Paid</u>	<u>Bail</u> <u>Forfeiture</u>	<u>Traffic</u> <u>School</u>	<u>Sum of</u> <u>Paid</u>	<u>Pay</u> <u>Rate</u>	<u>Closed</u> <u>No Pay</u>	<u>Pending</u>	<u>Closure</u> <u>Rate</u>	<u>Court</u> <u>Packs</u>	<u>TbD</u> <u>Packs</u>	<u>Contest</u> <u>Rate</u>
Aug-99	5,074	2,969	41%	2,105	1,412	693	486	4	23%	482	21	148	201	370	77%	104	7	98%	-	-	-
Sep-99	5,607	3,163	44%	2,444	1,499	945	635	0	26%	635	22	176	284	482	76%	118	21	94%	-	-	-
Oct-99	7,141	3,425	52%	2,444	1,897	1,819	1,533	11	41%	1,522	45	451	656	1,152	76%	297	45	95%	-	-	-
Nov-99	6,954	3,908	44%	3,046	1,160	1,886	1,698	4	56%	1,694	45	557	692	1,294	76%	301	46	94%	-	-	-
Dec-99	6,909	3,728	46%	3,181	1,300	1,881	1,759	4	55%	1,755	31	581	755	1,367	78%	254	90	92%	-	-	-
Jan-00	6,380	3,365	47%	3,015	1,343	1,672	1,662	31	54%	1,631	54	568	645	1,267	78%	218	102	91%	-	-	-
Feb-00	5,654	2,699	52%	2,955	1,377	1,578	1,548	11	52%	1,537	38	517	603	1,158	75%	270	56	93%	-	-	-
Mar-00	6,159	2,902	53%	3,257	1,626	1,631	1,612	3	49%	1,609	32	541	636	1,209	75%	283	67	93%	-	-	-
Apr-00	5,345	2,897	46%	2,448	1,275	1,173	1,157	9	47%	1,148	27	407	421	855	74%	236	36	95%	-	-	-
May-00	6,865	3,931	43%	2,934	1,442	1,492	1,479	3	50%	1,476	46	546	544	1,136	77%	204	120	91%	-	-	-
Jun-00	7,428	3,998	46%	3,430	1,507	1,923	1,900	3	55%	1,897	69	678	706	1,453	77%	244	180	89%	-	-	-
Jul-00	6,638	3,611	46%	3,027	1,521	1,506	1,491	3	49%	1,488	63	538	548	1,149	77%	196	140	90%	-	-	-
Aug-00	4,791	1,580	67%	3,211	1,451	1,760	1,736	0	54%	1,736	70	595	629	1,294	75%	232	210	88%	-	-	-
Sep-00	4,529	1,729	62%	2,800	1,205	1,595	1,574	1	56%	1,573	61	619	532	1,212	77%	221	140	91%	-	-	-
Oct-00	4,284	1,583	63%	2,701	1,172	1,529	1,505	0	56%	1,505	54	528	566	1,148	76%	209	148	90%	-	-	-
Nov-00	4,176	1,509	64%	2,667	1,043	1,624	1,608	0	60%	1,608	58	618	565	1,241	77%	234	133	92%	-	-	-
Dec-00	4,068	1,519	63%	2,549	983	1,566	1,545	0	61%	1,545	72	527	558	1,157	75%	226	162	90%	-	-	-
Jan-01	3,639	1,423	61%	2,216	868	1,348	1,321	0	60%	1,321	60	475	487	1,022	77%	171	128	90%	-	-	-
Feb-01	3,795	1,204	68%	2,591	1,058	1,533	1,522	0	59%	1,522	65	559	513	1,137	75%	223	162	89%	-	-	-
Mar-01	4,093	1,166	72%	2,927	1,240	1,687	1,660	1	57%	1,659	53	644	557	1,254	76%	202	203	88%	-	-	-
Apr-01	3,497	1,422	59%	2,075	900	1,175	1,156	0	56%	1,156	43	447	393	883	76%	133	140	88%	-	-	-
May-01	3,406	1,264	63%	2,142	1,098	1,044	1,037	0	48%	1,037	42	362	367	771	74%	118	148	86%	-	-	-
Jun-01	4,041	1,411	65%	2,630	1,115	1,515	1,495	0	57%	1,495	68	566	488	1,122	75%	131	242	84%	-	-	-
Jul-01	5,308	2,289	57%	3,019	1,280	1,739	1,718	2	57%	1,716	67	574	528	1,169	68%	261	286	83%	-	-	-
Aug-01	5,503	1,942	65%	3,561	1,301	2,260	2,222	0	62%	2,222	129	826	663	1,618	73%	210	394	82%	-	-	-
Sep-01	4,784	1,625	66%	3,159	1,118	2,041	2,001	0	63%	2,001	94	750	637	1,481	74%	167	353	82%	-	-	-
Oct-01	4,819	1,894	61%	2,925	1,028	1,897	1,862	0	64%	1,862	83	693	611	1,387	74%	193	282	85%	-	-	-
Nov-01	3,873	1,357	65%	2,516	934	1,582	1,540	17	61%	1,523	55	564	543	1,162	76%	119	242	84%	-	-	-
Dec-01	3,993	1,703	57%	2,290	954	1,336	1,275	7	55%	1,268	49	460	455	964	76%	115	189	85%	-	-	-
Jan-02	3,850	1,518	61%	2,332	956	1,376	1,336	2	57%	1,334	76	487	440	1,003	75%	107	224	83%	-	-	-
Feb-02	3,784	1,413	63%	2,371	829	1,542	1,520	2	64%	1,518	64	540	537	1,141	75%	126	251	83%	-	-	-
Mar-02	5,093	2,238	56%	2,855	1,083	1,772	1,741	9	61%	1,732	57	668	576	1,301	75%	133	298	83%	-	-	-
Apr-02	4,475	1,779	60%	2,696	953	1,743	1,713	11	63%	1,702	53	663	560	1,276	75%	152	274	84%	-	-	-
May-02	4,421	1,484	66%	2,937	1,063	1,874	1,853	0	63%	1,853	62	726	613	1,401	76%	152	300	84%	-	-	-
Jun-02	4,551	1,347	70%	3,204	1,287	1,917	1,876	0	59%	1,876	49	756	594	1,399	75%	161	316	83%	-	-	-
Jul-02	4,597	1,414	69%	3,183	1,162	2,021	1,995	4	63%	1,991	72	781	656	1,509	76%	153	329	83%	-	-	-
Aug-02	4,251	1,273	70%	2,978	1,076	1,902	1,834	7	61%	1,827	67	722	569	1,358	74%	150	319	83%	-	-	-
Sep-02	4,033	1,414	65%	2,619	958	1,661	1,630	19	62%	1,611	62	613	516	1,191	74%	138	282	82%	-	-	-
Oct-02	4,024	1,220	70%	2,804	1,085	1,719	1,650	0	59%	1,650	57	589	573	1,219	74%	134	297	82%	-	-	-
Nov-02	3,643	1,290	65%	2,353	914	1,439	1,386	2	59%	1,384	41	556	417	1,014	73%	127	243	82%	-	-	-
Dec-02	3,802	1,499	61%	2,303	821	1,482	1,377	0	60%	1,377	40	518	450	1,008	73%	132	237	83%	-	-	-



City of West Hollywood
Performance Report
December 2013

	<u>Total</u>	<u>Non</u>	<u>Percent</u>	<u>Potential</u>	<u>Initial</u>	<u>Actual</u>	<u>N/A</u>	<u>Police/</u>	<u>Issuance</u>	<u>Citations</u>	<u>Fine</u>	<u>Bail</u>	<u>Traffic</u>	<u>Sum of</u>	<u>Pay</u>	<u>Closed</u>	<u>Closure</u>	<u>Court</u>	<u>TbD</u>	<u>Contest</u>	
	<u>Events</u>	<u>Violations</u>	<u>Citable</u>	<u>Violations</u>	<u>Rejects</u>	<u>Violations</u>	<u>Returns</u>	<u>Client</u>	<u>Rate</u>	<u>Issued</u>	<u>Paid</u>	<u>Forfeiture</u>	<u>School</u>	<u>Paid</u>	<u>Rate</u>	<u>No Pay</u>	<u>Pending</u>	<u>Rate</u>	<u>Packs</u>	<u>Packs</u>	<u>Rate</u>
Jan-03	3,897	1,411	64%	2,486	864	1,622	1,461	1	59%	1,460	42	547	482	1,071	73%	125	264	82%	-	-	-
Feb-03	3,493	1,192	66%	2,301	872	1,429	1,339	3	58%	1,336	44	502	417	963	72%	140	233	83%	-	-	-
Mar-03	3,934	1,327	66%	2,607	941	1,666	1,568	92	57%	1,476	60	537	456	1,053	71%	179	244	83%	-	-	-
Apr-03	3,635	1,297	64%	2,338	830	1,508	1,426	155	54%	1,271	39	498	367	904	71%	129	238	81%	-	-	-
May-03	3,722	1,341	64%	2,381	903	1,478	1,412	69	56%	1,343	36	493	420	949	71%	133	261	81%	-	-	-
Jun-03	3,798	1,489	61%	2,309	854	1,455	1,427	87	58%	1,340	47	502	406	955	71%	136	249	81%	-	-	-
Jul-03	3,601	1,249	65%	2,352	874	1,478	1,443	74	58%	1,369	50	506	439	995	73%	145	229	83%	-	-	-
Aug-03	3,532	1,215	66%	2,317	871	1,446	1,423	15	61%	1,408	46	549	400	995	71%	139	274	81%	-	-	-
Sep-03	3,372	1,221	64%	2,151	722	1,429	1,405	63	62%	1,342	58	532	423	1,013	75%	115	214	84%	-	-	-
Oct-03	3,572	1,309	63%	2,263	777	1,486	1,453	59	62%	1,394	36	560	431	1,027	74%	113	254	82%	-	-	-
Nov-03	3,236	1,123	65%	2,113	773	1,340	1,311	31	61%	1,280	37	517	359	913	71%	136	231	82%	-	-	-
Dec-03	2,957	1,079	64%	1,878	672	1,206	1,177	48	60%	1,129	41	414	344	799	71%	128	202	82%	-	-	-
Jan-04	3,098	1,135	63%	1,963	681	1,282	1,259	46	62%	1,213	40	462	405	907	75%	97	209	83%	-	-	-
Feb-04	3,539	1,173	67%	2,366	752	1,614	1,587	113	62%	1,474	62	580	408	1,050	71%	132	292	80%	-	-	-
Mar-04	3,683	1,199	67%	2,484	878	1,606	1,573	223	54%	1,350	55	516	398	969	72%	138	243	82%	-	-	-
Apr-04	2,985	1,121	62%	1,864	664	1,200	1,176	86	58%	1,090	43	433	346	822	75%	73	195	82%	-	-	-
May-04	3,402	1,191	65%	2,211	759	1,452	1,422	91	60%	1,331	57	500	421	978	73%	103	250	81%	-	-	-
Jun-04	3,258	1,079	67%	2,179	879	1,300	1,270	11	58%	1,259	43	511	386	940	75%	94	225	82%	-	-	-
Jul-04	3,450	1,123	67%	2,327	849	1,478	1,441	90	58%	1,351	50	531	436	1,017	75%	92	242	82%	-	-	-
Aug-04	3,915	1,273	67%	2,642	913	1,729	1,686	87	61%	1,599	74	632	482	1,188	74%	110	301	81%	-	-	-
Sep-04	3,400	1,161	66%	2,239	808	1,431	1,404	66	60%	1,338	58	539	426	1,023	76%	109	206	85%	-	-	-
Oct-04	3,547	1,239	65%	2,308	846	1,462	1,421	69	59%	1,352	60	563	409	1,032	76%	91	229	83%	-	-	-
Nov-04	3,313	1,217	63%	2,096	773	1,323	1,298	37	60%	1,261	46	539	357	942	75%	104	215	83%	-	-	-
Dec-04	3,294	1,208	63%	2,086	774	1,312	1,285	88	57%	1,197	51	481	374	906	76%	88	203	83%	-	-	-
Jan-05	2,926	1,073	63%	1,853	698	1,155	1,130	115	55%	1,015	46	417	299	762	75%	74	179	82%	-	-	-
Feb-05	3,198	1,133	65%	2,065	753	1,312	1,292	118	57%	1,174	52	469	341	862	73%	85	227	81%	-	-	-
Mar-05	3,446	1,179	66%	2,267	790	1,477	1,404	103	57%	1,301	63	537	386	986	76%	80	235	82%	-	-	-
Apr-05	3,267	1,237	62%	2,030	744	1,286	1,264	164	54%	1,100	53	457	303	813	74%	91	196	82%	-	-	-
May-05	2,979	1,083	64%	1,896	638	1,258	1,243	108	60%	1,135	39	457	353	849	75%	79	207	82%	-	-	-
Jun-05	3,048	1,051	66%	1,997	727	1,270	1,254	89	58%	1,165	50	470	332	852	73%	88	225	81%	-	-	-
Jul-05	3,531	1,183	66%	2,348	939	1,409	1,388	94	55%	1,294	58	505	390	953	74%	79	262	80%	-	-	-
Aug-05	3,688	1,198	68%	2,490	1,099	1,391	1,373	54	53%	1,319	64	504	397	965	73%	101	253	81%	-	-	-
Sep-05	3,645	1,243	66%	2,402	719	1,683	1,665	121	64%	1,544	74	581	519	1,174	76%	99	271	82%	-	-	-
Oct-05	3,284	1,133	65%	2,151	794	1,357	1,338	53	60%	1,285	61	505	387	953	74%	102	230	82%	-	-	-
Nov-05	3,693	1,383	63%	2,310	712	1,598	1,570	60	65%	1,510	70	566	486	1,122	74%	131	257	83%	-	-	-
Dec-05	3,376	1,409	58%	1,967	602	1,365	1,344	70	65%	1,274	53	437	402	892	70%	163	219	83%	-	-	-
Jan-06	3,501	1,385	60%	2,116	708	1,408	1,386	55	63%	1,331	74	505	388	967	73%	130	234	82%	133	-	10%
Feb-06	3,398	1,306	62%	2,092	767	1,325	1,298	76	58%	1,222	62	462	368	892	73%	137	193	84%	111	-	8%
Mar-06	3,837	1,537	60%	2,300	738	1,562	1,536	110	62%	1,426	74	528	418	1,020	72%	164	242	83%	135	-	9%
Apr-06	3,893	1,799	54%	2,094	767	1,327	1,307	106	57%	1,201	63	425	375	863	72%	165	173	86%	113	-	9%
May-06	3,791	1,476	61%	2,315	711	1,604	1,575	122	63%	1,453	55	567	408	1,030	71%	167	256	82%	133	-	9%
Jun-06	4,069	1,519	63%	2,550	848	1,702	1,581	137	57%	1,444	61	546	402	1,009	70%	182	253	82%	76	-	6%
Jul-06	3,776	1,385	63%	2,391	755	1,636	1,613	130	62%	1,483	61	559	386	1,006	68%	203	274	82%	124	-	9%
Aug-06	3,064	917	70%	2,147	688	1,459	1,419	132	60%	1,287	53	484	334	871	68%	129	287	78%	114	-	9%
Sep-06	2,785	883	68%	1,902	604	1,298	1,275	98	62%	1,177	50	426	345	821	70%	140	216	82%	103	-	7%
Oct-06	3,091	1,092	65%	1,999	817	1,182	1,162	130	52%	1,032	49	376	324	749	73%	134	149	86%	131	-	11%
Nov-06	3,470	1,340	61%	2,130	920	1,210	1,186	141	49%	1,045	42	360	346	748	72%	137	160	85%	54	-	4%
Dec-06	3,122	1,002	68%	2,120	888	1,232	1,124	115	48%	1,009	40	360	315	715	71%	116	178	82%	97	-	7%



City of West Hollywood
Performance Report
December 2013

	<u>Total</u>	<u>Non</u>	<u>Percent</u>	<u>Potential</u>	<u>Initial</u>	<u>Actual</u>	<u>N/A</u>	<u>Police/</u>	<u>Issuance</u>	<u>Citations</u>	<u>Fine</u>	<u>Bail</u>	<u>Traffic</u>	<u>Sum of</u>	<u>Pay</u>	<u>Closed</u>	<u>Closure</u>	<u>Court</u>	<u>TbD</u>	<u>Contest</u>	
	<u>Events</u>	<u>Violations</u>	<u>Citable</u>	<u>Violations</u>	<u>Rejects</u>	<u>Violations</u>	<u>Returns</u>	<u>Client</u>	<u>Rate</u>	<u>Issued</u>	<u>Paid</u>	<u>Forfeiture</u>	<u>School</u>	<u>Paid</u>	<u>Rate</u>	<u>No Pay</u>	<u>Pending</u>	<u>Rate</u>	<u>Packs</u>	<u>Packs</u>	<u>Rate</u>
Jan-07	3,119	937	70%	2,182	894	1,288	1,166	90	49%	1,076	25	335	321	681	63%	241	154	86%	89	-	6%
Feb-07	2,874	913	68%	1,961	801	1,160	1,034	77	49%	957	40	343	283	666	70%	128	163	83%	86	-	7%
Mar-07	3,309	1,144	65%	2,165	817	1,348	1,178	99	50%	1,079	43	390	314	747	69%	166	166	85%	84	-	7%
Apr-07	3,145	1,093	65%	2,052	862	1,190	1,064	88	48%	976	44	371	266	681	70%	103	192	80%	89	-	9%
May-07	3,368	1,267	62%	2,101	918	1,183	1,052	64	47%	988	44	366	294	704	71%	115	169	83%	75	-	7%
Jun-07	3,364	1,094	67%	2,270	916	1,354	1,170	75	48%	1,095	58	427	283	768	70%	100	227	79%	79	-	8%
Jul-07	3,088	1,121	64%	1,967	789	1,178	1,019	46	49%	973	57	345	226	628	65%	127	218	78%	57	-	5%
Aug-07	2,790	954	66%	1,836	748	1,088	936	28	49%	908	45	303	225	573	63%	134	201	78%	73	-	8%
Sep-07	3,004	1,110	63%	1,894	870	1,024	887	30	45%	857	33	272	214	519	61%	65	273	68%	68	-	6%
Oct-07	2,879	1,079	63%	1,800	784	1,016	898	29	48%	869	41	297	221	559	64%	64	246	72%	37	-	4%
Nov-07	2,795	972	65%	1,823	688	1,135	1,004	41	53%	963	40	285	249	574	60%	94	295	69%	63	-	6%
Dec-07	2,748	977	64%	1,771	696	1,075	959	55	51%	904	40	296	266	602	67%	80	222	75%	63	-	6%
Jan-08	2,635	959	64%	1,676	676	1,000	886	36	51%	850	42	328	269	639	75%	83	128	85%	85	-	9%
Feb-08	2,490	908	64%	1,582	749	833	718	5	45%	713	38	266	230	534	75%	64	115	84%	103	-	11%
Mar-08	2,850	929	67%	1,921	930	991	894	7	46%	887	29	325	301	655	74%	103	129	85%	45	-	5%
Apr-08	2,896	1,016	65%	1,880	971	909	803	5	42%	798	34	299	215	548	69%	82	168	79%	98	-	11%
May-08	2,995	1,095	63%	1,900	913	987	852	5	45%	847	29	299	246	574	68%	96	177	79%	81	-	8%
Jun-08	2,834	965	66%	1,869	852	1,017	914	8	48%	906	31	324	254	609	67%	125	172	81%	67	-	7%
Jul-08	2,729	901	67%	1,828	807	1,021	933	7	51%	926	41	296	256	593	64%	127	206	78%	68	-	8%
Aug-08	2,264	618	73%	1,646	545	1,101	1,009	10	61%	999	39	381	263	683	68%	126	190	81%	64	-	9%
Sep-08	2,495	765	69%	1,730	667	1,063	947	6	54%	941	35	342	261	638	68%	97	206	78%	63	-	7%
Oct-08	2,847	1,023	64%	1,824	701	1,123	1,008	13	55%	995	43	349	286	678	68%	118	199	80%	84	-	11%
Nov-08	2,694	950	65%	1,744	616	1,128	1,000	8	57%	992	44	358	306	708	71%	88	196	80%	58	-	7%
Dec-08	2,754	921	67%	1,833	787	1,046	936	17	50%	919	39	324	277	640	70%	78	201	78%	64	-	7%
Jan-09	2,521	894	65%	1,627	597	1,030	915	11	56%	904	34	316	264	614	68%	97	193	79%	88	-	10%
Feb-09	2,292	807	65%	1,485	583	902	811	5	54%	806	42	275	225	542	67%	115	149	82%	73	-	7%
Mar-09	2,547	895	65%	1,652	661	991	896	6	54%	890	51	300	245	596	67%	120	174	80%	96	-	10%
Apr-09	2,457	835	66%	1,622	697	925	812	8	50%	804	40	269	223	532	66%	127	145	82%	110	-	11%
May-09	2,655	903	66%	1,752	693	1,059	955	34	53%	921	54	321	267	642	70%	126	153	83%	90	-	9%
Jun-09	2,815	1,043	63%	1,772	683	1,089	980	18	54%	962	44	315	275	634	66%	134	194	80%	65	-	7%
Jul-09	5,699	3,778	34%	1,921	768	1,153	1,048	19	54%	1,029	51	362	279	692	67%	117	220	79%	57	-	6%
Aug-09	5,250	3,442	34%	1,808	716	1,092	992	10	54%	982	43	307	266	616	63%	179	187	81%	67	-	8%
Sep-09	4,663	3,263	30%	1,400	418	982	879	4	63%	875	42	323	245	610	70%	107	158	82%	62	-	7%
Oct-09	5,176	3,375	35%	1,801	701	1,100	982	12	54%	970	47	300	251	598	62%	193	179	82%	71	-	9%
Nov-09	4,685	3,033	35%	1,652	671	981	885	31	52%	854	35	299	241	575	67%	119	160	81%	44	-	5%
Dec-09	5,024	3,633	28%	1,391	570	821	739	15	52%	724	31	248	206	485	67%	114	125	83%	110	-	11%
Jan-10	5,401	4,068	25%	1,333	492	841	744	20	54%	724	32	230	217	479	66%	100	138	80%	26	-	3%
Feb-10	5,714	4,366	24%	1,348	528	820	683	14	50%	669	28	234	180	442	66%	80	141	78%	70	-	7%
Mar-10	5,919	4,388	26%	1,531	670	861	764	22	48%	742	30	260	214	504	68%	93	134	80%	83	-	9%
Apr-10	7,093	5,453	23%	1,640	746	894	775	14	46%	761	24	259	187	470	62%	111	163	76%	73	-	8%
May-10	5,863	4,149	29%	1,714	678	1,036	942	23	54%	919	34	297	262	593	65%	91	194	74%	64	-	7%
Jun-10	5,251	3,457	34%	1,794	774	1,020	929	19	51%	910	29	311	235	575	63%	112	172	75%	48	-	7%
Jul-10	4,809	3,053	37%	1,756	769	987	891	11	50%	880	45	278	218	541	61%	81	193	71%	108	-	15%
Aug-10	4,662	2,930	37%	1,732	692	1,040	952	17	54%	935	36	310	198	544	58%	95	221	68%	41	-	6%
Sep-10	4,451	2,945	34%	1,506	622	884	777	7	51%	770	31	249	191	471	61%	47	185	67%	82	-	11%
Oct-10	4,319	2,874	33%	1,445	577	868	780	40	51%	740	29	223	189	441	60%	43	190	65%	57	-	7%
Nov-10	4,287	2,766	35%	1,521	565	956	869	71	52%	798	35	249	185	469	59%	7	225	60%	53	-	6%
Dec-10	3,873	2,396	38%	1,477	826	651	586	36	37%	550	27	166	125	318	58%	6	137	59%	90	-	10%
Jan-11	3,669	2,521	31%	1,148	610	538	491	8	42%	483	17	149	118	284	59%	74	125	74%	77	-	9%



City of West Hollywood
Performance Report
December 2013

	<u>Total</u>	<u>Non</u>	<u>Percent</u>	<u>Potential</u>	<u>Initial</u>	<u>Actual</u>	<u>N/A</u>	<u>Police/</u>	<u>Issuance</u>	<u>Citations</u>	<u>Fine</u>	<u>Bail</u>	<u>Traffic</u>	<u>Sum of</u>	<u>Pay</u>	<u>Closed</u>	<u>Closure</u>	<u>Court</u>	<u>TbD</u>	<u>Contest</u>	
	<u>Events</u>	<u>Violations</u>	<u>Citable</u>	<u>Violations</u>	<u>Rejects</u>	<u>Violations</u>	<u>Returns</u>	<u>Rejected</u>	<u>Rate</u>	<u>Issued</u>	<u>Paid</u>	<u>Forfeiture</u>	<u>School</u>	<u>Paid</u>	<u>Rate</u>	<u>No Pay</u>	<u>Pending</u>	<u>Rate</u>	<u>Packs</u>	<u>Packs</u>	<u>Rate</u>
Feb-11	3,783	2,473	35%	1,310	697	613	557	11	42%	546	19	167	120	306	56%	90	150	73%	65	-	7%
Mar-11	4,531	2,930	35%	1,601	679	922	814	56	47%	758	42	244	162	448	59%	107	203	73%	62	-	8%
Apr-11	4,141	2,832	32%	1,309	450	859	756	4	57%	752	27	221	142	390	52%	131	231	69%	80	-	11%
May-11	4,972	3,122	37%	1,850	1,034	816	733	6	39%	727	31	202	134	367	50%	125	235	68%	73	-	9%
Jun-11	4,237	2,674	37%	1,563	715	848	772	3	49%	769	28	225	93	346	45%	135	288	63%	69	-	13%
Jul-11	4,491	2,758	39%	1,733	690	1,043	900	10	51%	890	29	255	102	386	43%	141	363	59%	103	-	21%
Aug-11	5,035	3,178	37%	1,857	735	1,122	1,003	7	54%	996	35	258	113	406	41%	197	393	61%	73	-	13%
Sep-11	4,383	2,596	41%	1,787	716	1,071	947	6	53%	941	33	260	113	406	43%	161	374	60%	111	-	15%
Oct-11	4,447	2,447	45%	2,000	640	1,360	1,182	30	58%	1,152	59	322	148	529	46%	179	444	61%	52	-	7%
Nov-11	4,450	2,563	42%	1,887	616	1,271	1,148	26	59%	1,122	39	317	159	515	46%	193	414	63%	77	-	11%
Dec-11	4,277	2,419	43%	1,858	516	1,342	1,156	29	61%	1,127	43	311	156	510	45%	149	468	58%	84	-	11%
Jan-12	4,352	2,421	44%	1,931	516	1,415	1,198	44	60%	1,154	35	318	149	502	44%	153	499	57%	103	-	12%
Feb-12	4,258	2,352	45%	1,906	588	1,318	1,120	48	56%	1,072	40	278	123	441	41%	162	469	56%	57	-	6%
Mar-12	4,807	2,581	46%	2,226	777	1,449	1,280	33	56%	1,247	53	323	159	535	43%	158	554	56%	60	-	6%
Apr-12	4,920	2,703	45%	2,217	822	1,395	1,246	35	55%	1,211	36	291	155	482	40%	144	585	52%	89	-	8%
May-12	5,216	2,789	47%	2,427	850	1,417	1,417	65	56%	1,352	44	275	192	511	38%	182	659	51%	84	-	7%
Jun-12	3,227	1,228	62%	1,999	386	1,613	1,452	73	69%	1,379	46	304	150	500	36%	173	706	49%	95	-	8%
Jul-12	4,806	2,412	50%	2,394	862	1,532	1,381	79	54%	1,302	40	291	158	489	38%	169	644	51%	99	-	5%
Aug-12	5,237	2,698	48%	2,539	837	1,702	1,489	67	56%	1,422	37	262	169	468	33%	196	758	47%	54	-	5%
Sep-12	5,087	2,704	47%	2,383	726	1,657	1,463	71	58%	1,392	32	247	154	433	31%	193	766	45%	134	-	11%
Oct-12	4,567	2,410	47%	2,157	649	1,508	1,320	51	59%	1,269	18	292	136	446	35%	183	640	50%	114	-	9%
Nov-12	3,983	2,247	44%	1,736	474	1,262	1,056	36	59%	1,020	11	233	90	334	33%	114	572	44%	71	-	5%
Dec-12	3,854	2,283	41%	1,571	483	1,088	899	31	55%	868	12	195	78	285	33%	95	488	44%	98	-	7%
Jan-13	4,038	2,466	39%	1,572	475	1,097	962	28	59%	934	19	158	107	284	30%	84	566	39%	67	32	8%
Feb-13	3,881	2,191	44%	1,690	540	1,150	1,001	26	58%	975	25	190	132	347	36%	94	534	45%	65	35	7%
Mar-13	4,253	2,244	47%	2,009	758	1,251	1,111	30	54%	1,081	21	240	114	375	35%	107	599	45%	85	34	9%
Apr-13	3,818	2,112	45%	1,706	569	1,137	969	27	55%	942	19	197	120	336	36%	94	512	46%	101	18	9%
May-13	4,388	2,323	47%	2,065	791	1,274	1,092	50	50%	1,042	11	188	126	325	31%	108	609	42%	86	18	10%
Jun-13	4,390	2,257	49%	2,133	960	1,173	1,013	36	46%	977	6	168	84	258	26%	81	638	35%	93	24	13%
Jul-13	4,657	2,440	48%	2,217	852	1,365	1,151	39	50%	1,112	3	186	73	262	24%	213	637	43%	131	37	18%
Aug-13	4,657	2,440	48%	2,217	853	1,364	1,150	39	50%	1,111	1	153	53	207	19%	57	847	24%	111	26	14%
Sep-13	4,371	2,304	47%	2,067	823	1,244	1,026	39	48%	987	-	97	23	120	12%	16	851	14%	108	30	13%
Oct-13	4,403	2,360	46%	2,043	727	1,316	1,049	38	49%	1,011	-	49	4	53	5%	7	951	6%	142	40	19%
Nov-13	4,424	2,444	45%	1,980	721	1,259	1,086	39	53%	1,047	-	-	-	-	0%	-	1,047	0%	52	15	7%
Dec-13	4,014	2,259	44%	1,755	587	1,168	934	24	52%	910	-	-	-	-	0%	-	910	0%	92	7	10%
Total	699,204	326,061	53%	373,143	145,667	227,476	212,219	6,935	55%	205,284	7,617	69,569	56,903	134,089	67%	22,863	47,393	78%	7,872	316	9%

* Total Pay and Closure Rates omit the last 4 months to allow for court processing

** The Contest Rate assumes a 6 month lag from the violation date and is only available from January 2006 to present